

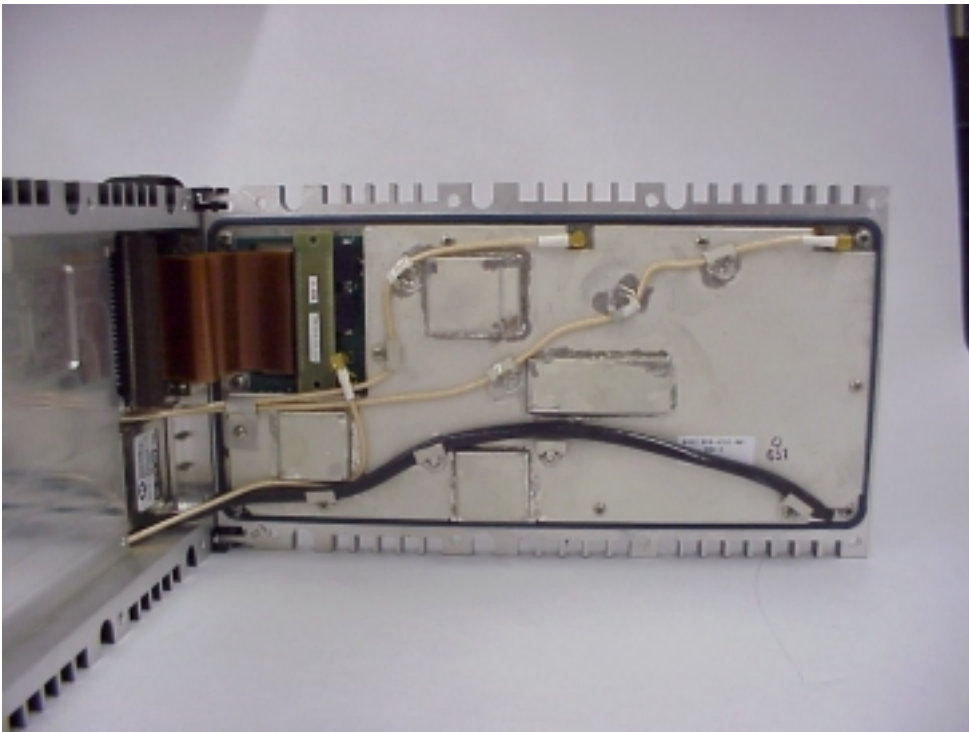
Exhibit I. Internal Photos



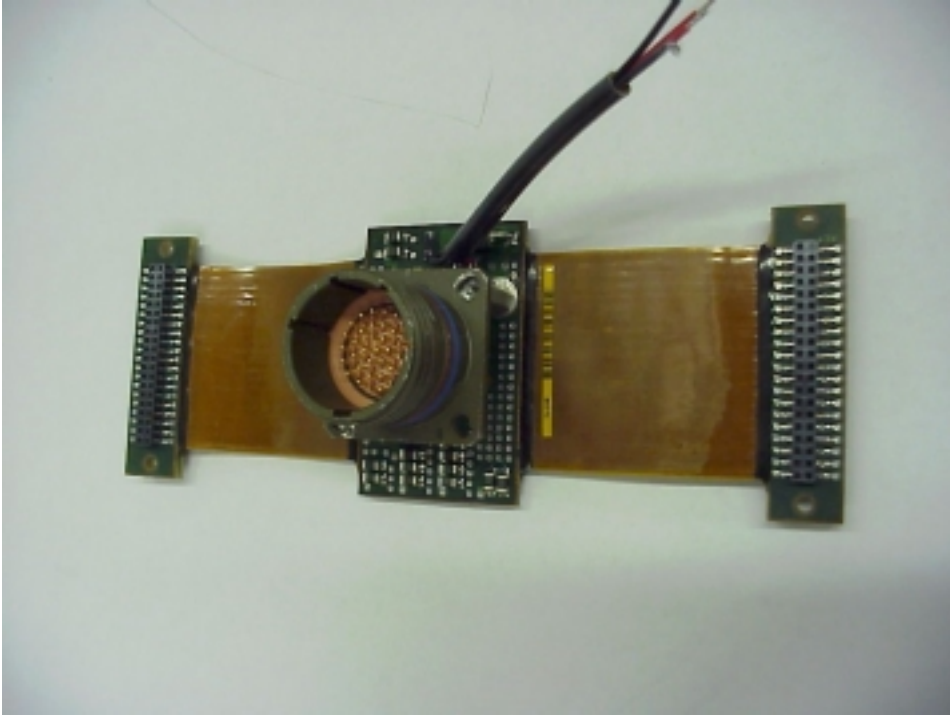
Power supply card A4 with shield in place. Connectorized part, lower right, is the lowpass filter in the transmit and receive signal paths. See Operational Description, exhibit L. This photograph also includes the interconnect assembly, A3, at extreme top right. A3 connects to all three circuit cards through flex circuitry and connectors mounted on circuit boards, as seen here, top right.



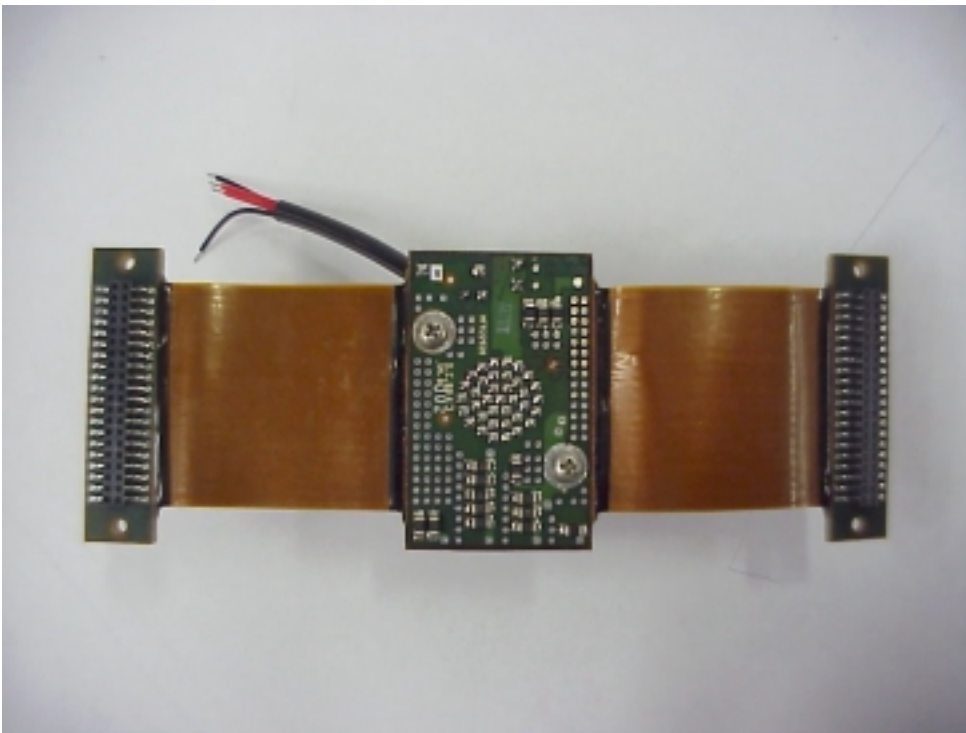
VDL DSP card A2.



VDL RF assembly A1, with shields in place and all cables connected.



VDL Interconnect Assembly, A3, seen from the surface that mounts facing the rear of the radio.



VDL Interconnect Assembly, A3, seen from the side that mounts facing into the radio.



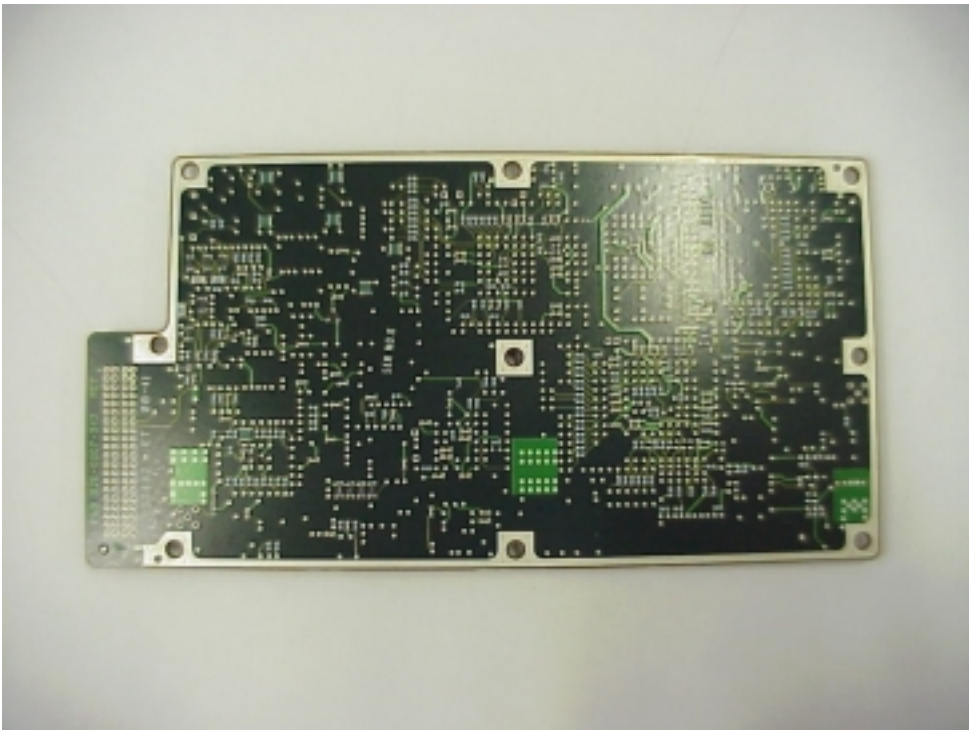
VDL Power Supply, A4, seen from the top side, shields off.



VDL Power Supply, A4, seen from the bottom side.



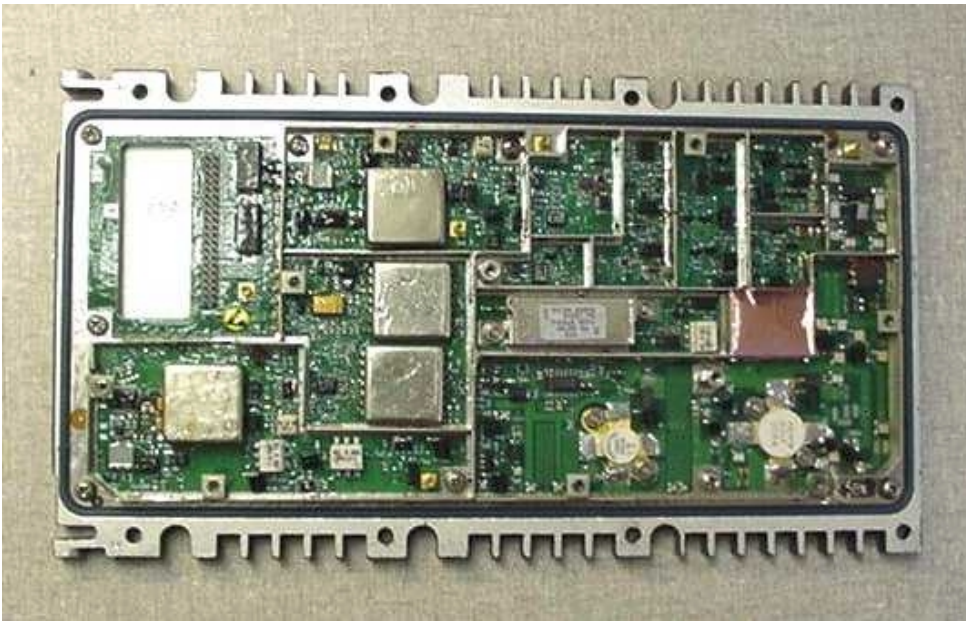
DSP Assembly, A2, seen from the top side.



DSP Assembly, A2, seen from the bottom side.



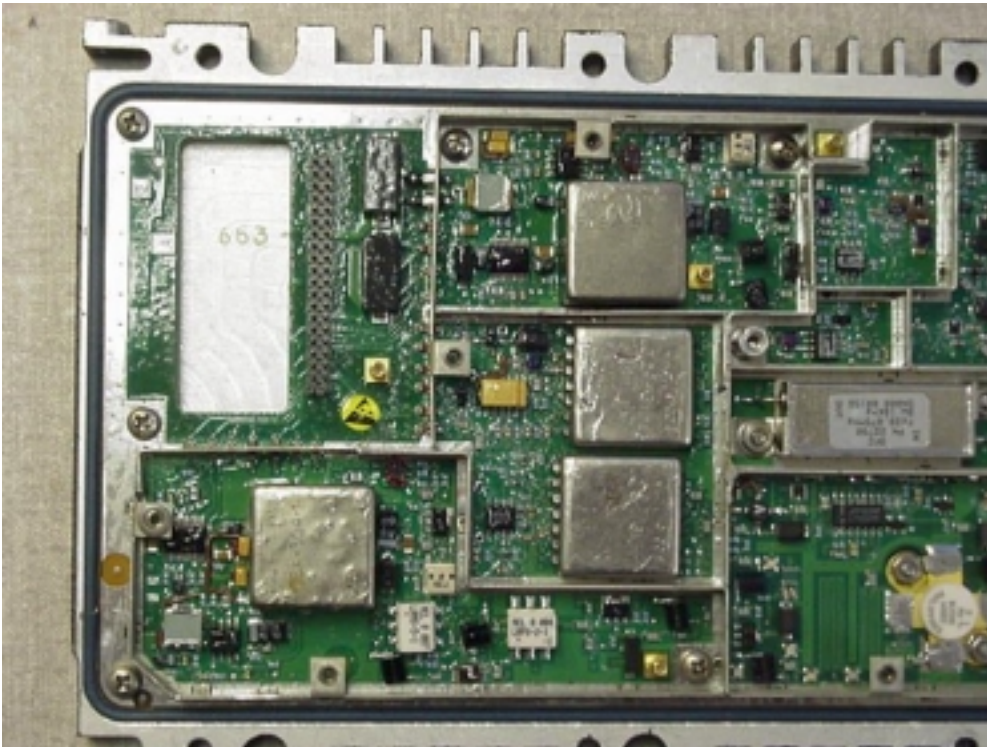
RF CCA, A1, bottom view.



RF CCA, A1, Top Side, finished assembly



RF CCA, A1, Area around Power Amplifier



RF CCA, A1, Area around LO generation circuitry