

- NOTES:
1. PARENTHETICAL ITEM IDENTIFICATION DENOTES (ITEM FIND NO.-QTY).
 2. REFERENCE DESIGNATORS ARE USED IN LIEU OF ITEM FIND NUMBERS.
 3. 580-6520-001 MAY BE UTILIZED ON THIS ASSEMBLY.
 4. TO BE TESTED AT A HIGHER LEVEL.
 5. SOLDER PER COMMERCIAL REQUIREMENTS (580-5178-000).
 6. MAXIMUM Z TOP DIMENSION SHALL NOT EXCEED .470. MAXIMUM Z BOTTOM DIMENSION SHALL NOT EXCEED .200.
 7. MARK REV LETTER FOLLOWING THE APPROPRIATE LETTERS REV PER 839-0497-001. ASSEMBLY IDENTIFIED BY APPLICATION OF MARKING REQUIREMENTS ON FAB PART.
 8. MAXIMUM LEAD PROTRUSION TO BE .100.
 9. "T" DESIGNATES BOARD TOP SURFACE.
 10. PER MANUFACTURING, PROJECT OR CONTRACT REQUIREMENTS, MARK THE MANUFACTURING CONTROL NUMBER FOLLOWING THE LETTERS MCN PER 839-0497-001.
 11. DESIGNATORS E1-12, TP1, 3, 20-31, 33-57, 60, 61 AND P1 ARE FOR REFERENCE ONLY.
 12. POSTCOAT TOP AND BOTTOM SIDES PER 580-5458-001. CROSSHATCHED AREAS TO BE FREE OF POSTCOAT, TOP AND BOTTOM.
 13. ALL JUMPER WIRE, IF APPLICABLE, IS 36 GAUGE OR LARGER ETCHED TEFLON INSULATED WIRE, U.O.S. BOND WIRE(S) TO BOARD PER 580-5573-001. ROUTING OF JUMPERS OPTIONAL U.O.S.
 14. FINELINE/FINEPITCH TECHNOLOGY UTILIZED WITH .005 CIRCUIT LINES AND .008 MINIMUM CONDUCTOR SPACINGS.
 15. NO EXCESS SOLDER SHALL BE USED ON CROSSHATCHED AREAS ON BOTTOM SIDE.
 16. TOP SURFACE AND INDICATED AREAS ON SIDES OF ITEMS 56-64 TO BE FREE OF POSTCOAT. SEE DETAIL B FOR REFERENCE.
 17. ROUTE W1 AS SHOWN AND BOND TO ITEM 1 USING ITEM 2 PER 580-5205-010.
 18. REWORK WILL CONFORM TO PROCESS REQUIREMENTS.
 19. LAP SOLDER WHERE INDICATED BY ◀.
 20. APPLY ITEM 248 TO BOARD, TRIM AS REQUIRED BOND ITEMS 135, C140 AND C998 TO ITEM 248 USING ITEM 249 PER 839-0507-001.
 21. SOLDER ITEMS 56-64 TO EACH OTHER AT SHIELD INTERSECTIONS AND TO ITEM 1 AT TABS ONLY.
 22. APPLY ITEM 251 TO BOARD, TRIM AS REQUIRED. BOND ITEM 153 TO ITEM 251 USING ITEM 249 PER 839-0507-001.
 23. APPLY ITEM 252 TO BOARD, TRIM AS REQUIRED. BOND ITEM 250 TO ITEM 252 USING ITEM 249 PER 839-0507-001.
 24. APPLY ITEM 252 TO BOARD, TRIM AS REQUIRED. BOND C116 AND C999 TO ITEM 252 USING ITEM 249 PER 839-0507-001.
 25. BOND C1000 TO TOP OF C80, C1001 ON TOP OF R116, C1003 ON TOP OF C972, R1000 ON TOP OF U6, C1004 ON TOP OF R29, C1005 ON TOP OF R33, C1006 ON TOP OF R52, C1007 ON TOP OF R188, USING ITEM 249 PER 839-0507-001.
 26. BOND ITEMS 18 AND 19 TO ITEM 1 USING ITEM 2 PER 580-5205-010.
 27. REMOVE SOLDERMASK FROM AREAS INDICATED.
 28. INSTALL C232 OR C233 ACROSS INDICATED LEADS OF U11 OR U17. SOLDER BRIDGE IS ACCEPTABLE.
 29. SEE NOTES 20, 22, 23, 24, AND 25.
 30. BY DESIGN, ITEM 17, MIDDLE TERMINATION POINT WILL NOT MEET OVERHANG REQUIREMENTS FOR END TERMINATION.
 31. ONE END OF C1002 WILL EXCEED 33% OVERHANG OF PAD.

| SCHEMATIC AND FAB BOARD APPLICABILITY REF. TABLE | | | | | |
|--|---------|--------------|---------|---------------|---------|
| SCHEMATIC | ALT LTR | FAB BOARD | ALT LTR | CKT CARD ASSY | ALT LTR |
| 828-8586-002 | - | 826-0007-456 | - | 828-3186-002 | - |
| 828-8586-002 | A | 826-0007-456 | A | 828-3186-002 | A |
| 828-8586-002 | B | 826-0007-456 | A | 828-3186-002 | B |
| 828-8586-002 | B | 826-0007-456 | B | 828-3186-002 | C |

| REVISIONS | | | |
|-----------|-------------|------------|------|
| LTR | DESCRIPTION | DATE | APVD |
| A | RL0484 | 12/11/2000 | CFD |
| B | RL4407 | 02/06/2001 | KH |
| C | RM1402 | 07/02/2001 | KH |

| QTY | ITEM NO. | PART OR IDENT NO. | NOMENCLATURE OR DESCRIPTION | NOTES | REF DESIGNATORS |
|-----|----------|-------------------|-----------------------------|-------|--|
| 4 | 87 | 705-2438-400 | RESISTOR, 7.5 k | | R716,717,733,734 |
| 5 | 86 | 705-2438-350 | RESISTOR, 5.11 k | | R121,127,128,206,912 |
| 8 | 85 | 705-2438-330 | RESISTOR, 4.75 k | | R2,22,166,230-232, 403,404 |
| 5 | 84 | 705-2438-260 | RESISTOR, 3.32 k | | R96,134,144,154,214 |
| 2 | 83 | 705-2438-210 | RESISTOR, 2.43 k | | R105,106 |
| 3 | 82 | 705-2438-180 | RESISTOR, 2.21 k | | R3,145,212 |
| 7 | 81 | 705-2438-120 | RESISTOR, 1.62 k | | R81,108,131,156,229, 236,238 |
| 24 | 80 | 705-2438-050 | RESISTOR, 1 k | | R20,25,66,69,117,122, 158,165,178,179,206, 207,233,407,408, 719-722,731,732, 736-738 |
| 4 | 79 | 705-2437-920 | RESISTOR, 619 | | R218,772,775,778 |
| 4 | 78 | 705-2437-890 | RESISTOR, 511 | | R120,146,718,735 |
| 1 | 77 | 705-2437-860 | RESISTOR, 475 | | R751 |
| 4 | 76 | 705-2437-760 | RESISTOR, 274 | | R723,728,807,808 |
| 2 | 75 | 705-2437-690 | RESISTOR, 221 | | R845,846 |
| 5 | 74 | 705-2437-660 | RESISTOR, 200 | | R79,109,194,815,913 |
| 1 | 73 | 705-2437-630 | RESISTOR, 182 | | R201 |
| 10 | 72 | 705-2437-480 | RESISTOR, 100 | | R5,10,57,65,170-173, 196,210 |
| 4 | 71 | 705-2437-370 | RESISTOR, 68.1 | | R39,41,184,200 |
| 10 | 70 | 705-2437-300 | RESISTOR, 51.1 | | R42,67,113,114,135, 136,182,192,841,842 |
| 1 | 69 | 705-2437-210 | RESISTOR, 30.1 | | R97 |
| 2 | 68 | 705-2437-150 | RESISTOR, 18.2 | | R72,191 |
| 3 | 67 | 705-2437-070 | RESISTOR, 12.1 | | R75,149,150 |
| 11 | 66 | 705-2437-050 | RESISTOR, 10 | | R54,55,62,63,147,148, 174,175,209,216,217 |
| 12 | 65 | 705-2437-010 | RESISTOR, 0 | | R77,180,181,222,226, 724,725,729,730,810, 811,1001 |
| 1 | 64 | 653-4064-010 | SHIELD, RF | 16,21 | |
| 1 | 63 | 653-4064-009 | SHIELD, RF | 16,21 | |
| 3 | 62 | 653-4064-008 | SHIELD, RF | 16,21 | |
| 1 | 61 | 653-4064-006 | SHIELD, RF | 16,21 | |
| 1 | 60 | 653-4064-005 | SHIELD, RF | 16,21 | |
| 1 | 59 | 653-4064-004 | SHIELD, RF | 16,21 | |
| 1 | 58 | 653-4064-003 | SHIELD, RF | 16,21 | |
| 1 | 57 | 653-4064-002 | SHIELD, RF | 16,21 | |
| 1 | 56 | 653-4064-001 | SHIELD, RF | 16,21 | |
| 1 | 55 | 653-4029-280 | CABLE ASSY | | |
| 1 | 54 | 653-4029-176 | CABLE ASSY, POWER | | |
| 1 | 53 | 439-4473-000 | WIRE, A18TA00X2XXX(FT) | 17 | W1 |
| 0.4 | 52 | 421-0074-000 | WIRE, B26BA00XXXX(FT) | | |
| 2 | 51 | 357-7553-030 | CONN,ELEC | | J3,4 |
| 1 | 50 | 357-7517-010 | CONN,ELEC | | J2 |
| 3 | 14 | 240-2939-160 | COIL, 56 nH | | |
| 1 | 13 | 240-2939-150 | COIL, 47 nH | | |
| 3 | 12 | 240-2939-130 | COIL, 33 nH | | |
| 3 | 11 | 240-2939-110 | COIL, 22 nH | | |
| 1 | 10 | 240-2939-080 | COIL, 82 nH | | |
| 8 | 9 | 240-2939-040 | COIL, 39 nH | | |
| 2 | 8 | 240-2933-250 | COIL, 100 | | |
| 1 | 7 | 240-2933-210 | COIL, 47 | | |
| 6 | 6 | 240-2933-130 | COIL, 10 | | |
| 4 | 5 | 240-2052-040 | COIL, 12.5 nH | | |
| 1 | 4 | 240-2052-020 | COIL, 5 nH | | |
| 2 | 3 | 207-0082-140 | COIL, 1.2 | | |
| AR | 2 | 005-3167-010 | ADHESIVE,RTV-3145 | 17 | |
| 1 | 1 | 826-0007-456 | PHB | | |
| 26 | | | XFMR, RF | | T501 |
| 26 | | | XFMR, RF | | U2,104,108 |
| 30 | | | FILTER, 3300 pF | | FL25-27 |
| | | | FILTER, 220 pF | | FL8-13,21,22 |
| | | | FILTER, 22000 pF | | FL1-7,14,15,17-20,23 |
| | | | | | 24,31-33 |
| | | | | | L27,602,913 |
| | | | | | L601 |
| | | | | | L1,4,909 |
| | | | | | L2,3,906 |
| | | | | | L707 |
| | | | | | L7,8,12,13,103,104, |
| | | | | | 106,107 |
| | | | | | L101,105 |
| | | | | | L29 |
| | | | | | L26,201-205 |
| | | | | | L902,903,915,921 |
| | | | | | L916 |
| | | | | | L703,706 |

PARTS LIST CONTINUED ON PAGE 2

| QTY | ITEM NO. | PART OR IDENT NO. | NOMENCLATURE OR DESCRIPTION | NOTES | REF DESIGNATORS |
|-----|----------|-------------------|-----------------------------|--|-----------------|
| 1 | 90 | 705-2438-500 | RESISTOR, 12.4 k | R26 | |
| 54 | 89 | 705-2438-440 | RESISTOR, 10 k | R11-14,17,18,23,24, 30,85,90,94,95,102, 107,115,124,130,142, 143,161,176,177,186, 187,190,202,223-225, 235,237,401,402,405, 406,726,727,739,740, 747,752-755,774,816, 817,915,916,937,939, 941,967 | |
| 6 | 88 | 705-2438-420 | RESISTOR, 8.25 k | R104,110,111,116,129 | |
| | | | | 234 | |

| QTY | ITEM NO. | PART OR IDENT NO. | NOMENCLATURE OR DESCRIPTION | NOTES | REF DESIGNATORS |
|-----|----------|-------------------|-----------------------------|-------|-----------------|
| | | | | | |

| QTY | ITEM NO. | PART OR IDENT NO. | NOMENCLATURE OR DESCRIPTION | NOTES | REF DESIGNATORS |
|-----|----------|-------------------|-----------------------------|-------|-----------------|
| | | | | | |

REDAC

ROCKWELL PROPRIETARY INFORMATION.

| | | | |
|---|-----------------|----------------------------------|-----------|
| ROCKWELL COLLINS, INC | | | |
| 400 COLLINS ROAD NE, CEDAR RAPIDS, IOWA 52498 | | | |
| PREP K. BARKER Jul 02 2001 | | CIRCUIT CARD ASSEMBLY, VHF RF | |
| CHK D. FOY | | | |
| ENG B. LOMBARDI | | | |
| SIZE D | CAGE CODE 4V792 | DWG NO. 828-3186-002 | REV LTR C |
| SCALE NONE | | SHEET 1 OF 13 | |

PARTS LIST CONTINUED ON PAGE 3

| QTY | ITEM NO. | PART OR IDENT NO. | NOMENCLATURE OR DESCRIPTION | NOTES | REF DESIGNATORS |
|-----|----------|-------------------|-----------------------------|-------|--|
| 4 | 217 | 913-0865-350 | CAPACITOR, 560 pF | | C725,726,730,731 |
| 1 | 216 | 913-0865-340 | CAPACITOR, 470 pF | | C92 |
| 11 | 215 | 913-0865-300 | CAPACITOR, 220 pF | | C4-9,25,46,48,155,156 |
| 2 | 214 | 913-0865-280 | CAPACITOR, 150 pF | | C374,912 |
| 4 | 213 | 913-0865-260 | CAPACITOR, 100 pF | | C44,99,103,134 |
| 1 | 212 | 913-0865-230 | CAPACITOR, 56 pF | | C73 |
| 3 | 211 | 913-0865-220 | CAPACITOR, 47 pF | | C61,68,76 |
| 4 | 210 | 913-0865-200 | CAPACITOR, 33 pF | | C39,129,149,150 |
| 1 | 209 | 913-0865-180 | CAPACITOR, 22 pF | | C152 |
| 6 | 208 | 913-0865-170 | CAPACITOR, 18 pF | | C124,127,160,162,163,229 |
| 2 | 207 | 913-0865-150 | CAPACITOR, 12 pF | | C32,34 |
| 6 | 206 | 913-0865-140 | CAPACITOR, 10 pF | | C28,47,77,100,174,230 |
| 1 | 205 | 913-0865-020 | CAPACITOR, 1 pF | | C36 |
| 18 | 204 | 913-0863-050 | CAPACITOR, 0.1 | 25 | C41,54,55,58,59,63,64,79,85,86,129,168,169,822,823,856,857,1001 |
| 1 | 203 | 859-4830-080 | CONN,ELEC | | J101 |
| 2 | 202 | 852-3002-010 | FERRITE BEAD | | ZP1,2 |
| 1 | 201 | 850-2002-010 | IC, 50-400 MHz | | U110 |
| 1 | 200 | 850-1057-050 | IC, 236-304 MHz | | U107 |
| 1 | 199 | 850-1057-040 | IC, 146-181 MHz | | U103 |
| 2 | 198 | 850-0037-030 | IC, JCIQ-176MH-1 | | U800,803 |
| 1 | 197 | 850-0027-020 | IC, MIXER,RF | | U9 |
| 1 | 196 | 850-0006-020 | IC, LRMS-5 | | U109 |
| 2 | 195 | 849-2502-020 | XFMR, 50-400 MHZ | | T1,2 |
| 1 | 194 | 849-0031-210 | COIL, 47.0 | | L28 |
| 1 | 193 | 849-0028-300 | COIL, 27 | | L10 |
| 3 | 192 | 849-0028-170 | COIL, 2.2 | | L16,30,115 |
| 7 | 191 | 849-0028-130 | COIL, 1 | | L5,6,11,14,15,17,25 |
| 1 | 190 | 849-0028-060 | COIL, 0.27 | | L23 |
| 2 | 189 | 849-0028-050 | COIL, 0.22 | | L21,22 |
| 2 | 188 | 849-0025-170 | COIL, 2.2 | | L801,905 |
| 5 | 187 | 849-0025-120 | COIL, 0.82 | | L19,24,31,110,113 |
| 1 | 186 | 849-0025-090 | COIL, 0.47 | | L901 |
| 1 | 185 | 849-0003-720 | COIL, 2.2 | | L20 |
| 1 | 184 | 849-0003-680 | COIL, 1 | | L18 |
| 1 | 183 | 849-0003-580 | COIL, 0.27 | | L9 |
| 2 | 182 | 849-0003-490 | COIL, 0.056 | | L32,111 |
| 3 | 181 | 844-3820-020 | DIODE, HSMP-3800 | | CR1-3 |
| 8 | 180 | 844-0112-020 | DIODE, MMBV699LT1 | | VR3,4,7,8,11,12,15,16 |
| 2 | 179 | 844-0078-020 | DIODE, MA4PH237 | | CR711,712 |
| 2 | 178 | 844-0032-040 | DIODE, 2823 | | CR12,16 |
| 4 | 177 | 844-0032-030 | DIODE, 2822 | | CR8-11 |
| 5 | 176 | 844-0032-010 | DIODE, 2820 | | CR4,5,14,15,17 |
| 2 | 175 | 844-0022-010 | DIODE, HSMS-2800 | | CR501,502 |
| 1 | 174 | 843-9117-010 | TRANSISTOR, 4416 | | Q1 |
| 3 | 173 | 843-0036-010 | TRANSISTOR, NE46134 | | Q10,104,900 |
| 1 | 172 | 835-0751-090 | IC, 78L05A | | U16 |
| 1 | 171 | 835-0751-080 | IC, 79L05A | | U14 |
| 1 | 170 | 835-0751-040 | IC, 78L12A | | U201 |
| 1 | 169 | 835-0685-030 | IC, 201HS | | U708 |
| 1 | 168 | 835-0600-030 | IC, DG441 | | U7 |
| 1 | 167 | 835-0364-010 | IC, 826 | | U706 |
| 1 | 166 | 835-0362-100 | IC, ERA-5SM | | U805 |
| 2 | 165 | 835-0311-010 | IC, AD603 | | U12,13 |
| 1 | 164 | 835-0198-030 | IC, MC33076D | | U707 |
| 1 | 163 | 835-0191-020 | IC, MAV-11 SMD | | U905 |
| 2 | 162 | 835-0057-070 | IC, MSA-1105 | | U8,10 |
| 1 | 161 | 835-0046-060 | IC, 1678GV | | U111 |
| 3 | 160 | 835-0041-010 | IC, 833 | | U4,102,106 |
| 3 | 159 | 834-6014-380 | CAPACITOR, 22 pF | | C1-3 |
| 1 | 158 | 834-6014-290 | CAPACITOR, 10 pF | | C31 |
| 1 | 157 | 834-6014-270 | CAPACITOR, 8.2 pF | | C67 |
| 6 | 156 | 834-6014-250 | CAPACITOR, 6.8 pF | | C11,12,14,15,20,29 |
| 2 | 155 | 834-6014-130 | CAPACITOR, 2.2 pF | | C94,95 |
| 2 | 154 | 834-6014-010 | CAPACITOR, 1 pF | | C109,197 |
| 2 | 153 | 913-3667-310 | CAPACITOR, 0.01 | 22 | C138,173 |
| 1 | 152 | 834-5087-050 | CAPACITOR, 0.0012 | | C93 |
| 1 | 151 | 834-5008-080 | CAPACITOR, 3.9 pF | | C855 |
| 3 | 150 | 834-5005-990 | CAPACITOR, 1 | | C24,944,953 |
| 6 | 149 | 834-5005-790 | CAPACITOR, 0.33 | | C19,56,71,90,126,191 |
| 3 | 148 | 834-5005-770 | CAPACITOR, 0.22 | 25 | C80,122,1000 |
| 27 | 147 | 834-5005-370 | CAPACITOR, 0.1 | | C22,23,27,35,83,84,87,88,96,97,101,106,120,132,135,201-203,205,207,208,213,727,728,732,734,735 |
| 1 | 146 | 834-5005-350 | CAPACITOR, 0.068 | | C21 |
| 3 | 145 | 834-5005-330 | CAPACITOR, 0.047 | | C81,121,123 |
| 7 | 144 | 834-5005-250 | CAPACITOR, 0.01 | | C199,214,740,902,927,954,991 |
| 1 | 143 | 834-5005-210 | CAPACITOR, 0.0047 | | C82 |
| 1 | 142 | 834-5005-050 | CAPACITOR, 0.01 | | C943 |
| 3 | 141 | 834-2008-240 | CAPACITOR, 33 | | C195,196,824 |
| 4 | 140 | 834-2008-230 | CAPACITOR, 22 | | C180,181,183,184 |
| 11 | 139 | 834-2008-190 | CAPACITOR, 10 | | C176,177,185-188,200 |
| 1 | 138 | 834-2008-170 | CAPACITOR, 6.8 | | 204,206,211,215 |
| 2 | 137 | 834-2008-140 | CAPACITOR, 4.7 | | C212 |
| 14 | 136 | 834-2008-070 | CAPACITOR, 1 | | C209,210 |
| | | | | | C102,107,112,130,131,133,136,142,170,171,222,223,500,733 |

| QTY | ITEM NO. | PART OR IDENT NO. | NOMENCLATURE OR DESCRIPTION | NOTES | REF DESIGNATORS |
|---|----------|-------------------|-----------------------------|-------|-----------------|
| PARTS LIST (US CUSTOMARY MEASUREMENTS ONLY) | | | | | |

| QTY | ITEM NO. | PART OR IDENT NO. | NOMENCLATURE OR DESCRIPTION | NOTES | REF DESIGNATORS |
|---|----------|-------------------|-----------------------------|-------|-----------------|
| PARTS LIST (US CUSTOMARY MEASUREMENTS ONLY) | | | | | |

| QTY | ITEM NO. | PART OR IDENT NO. | NOMENCLATURE OR DESCRIPTION | NOTES | REF DESIGNATORS |
|---|----------|-------------------|-----------------------------|-------|-----------------|
| PARTS LIST (US CUSTOMARY MEASUREMENTS ONLY) | | | | | |

ROCKWELL COLLINS, INC
400 COLLINS ROAD NE, CEDAR RAPIDS IOWA, 52498

| | | | | |
|-----------------|---------|----------------|----------------------|-----------|
| PREP. K. BARKER | SIZE D | CRG CODE 4V792 | DWG NO. 828-3186-002 | REV LTR C |
| SCALE NONE | SHEET 2 | | | |

ROCKWELL PROPRIETARY INFORMATION.

DIGITAL DATA ONLY, NO MASTER TRACING.

| | | | | |
|----|------------------|--------------------|-------|---|
| 2 | 250 913-3667-510 | CAPACITOR, 0.0027 | 23 | C113,146 |
| AR | 249 838-0002-010 | ADHESIVE, UNISSET | 29 | |
| 2 | 248 628-7676-016 | INSULATOR | 20 | |
| 1 | 247 914-3503-730 | CAPACITOR, 560 pF | | C995 |
| 4 | 246 914-3503-710 | CAPACITOR, 470 pF | | C501,741,750,941 |
| 2 | 245 914-3503-590 | CAPACITOR, 120 pF | | C957,972 |
| 1 | 244 914-3503-410 | CAPACITOR, 39 pF | | C994 |
| 1 | 243 914-3503-400 | CAPACITOR, 36 pF | | C604 |
| 1 | 242 914-3503-360 | CAPACITOR, 24 pF | | C603 |
| 3 | 241 914-3503-330 | CAPACITOR, 18 pF | | C605,708,749 |
| 1 | 240 914-3503-210 | CAPACITOR, 5.6 pF | | C601 |
| 2 | 239 914-3503-160 | CAPACITOR, 3.6 pF | | C602,993 |
| 2 | 238 914-3500-370 | CAPACITOR, 100 pF | | C904,911 |
| 2 | 237 914-3500-350 | CAPACITOR, 82 pF | | C907,910 |
| 1 | 236 914-3500-310 | CAPACITOR, 56 pF | | C192 |
| 1 | 235 914-3500-270 | CAPACITOR, 39 pF | | C193 |
| 2 | 234 914-3500-240 | CAPACITOR, 30 pF | | C909,940 |
| 1 | 233 914-3500-230 | CAPACITOR, 27 pF | | C937 |
| 1 | 232 914-3500-200 | CAPACITOR, 20 pF | | C900 |
| 2 | 231 913-3670-090 | CAPACITOR, 560 pF | | C903,928 |
| 1 | 230 913-3667-470 | CAPACITOR, 220 pF | | C908 |
| 1 | 229 913-3667-170 | CAPACITOR, 150 pF | | C905 |
| 2 | 228 913-3667-150 | CAPACITOR, 100 pF | | C119,198 |
| 1 | 227 913-3667-080 | CAPACITOR, 27 pF | | C66 |
| 4 | 226 913-3667-030 | CAPACITOR, 10 pF | 28,31 | C232,233,996,1002 |
| 31 | 225 913-0865-680 | CAPACITOR, 1000 pF | | C10,13,53,60,62,69, 78,137,139,147,148, 151,154,158,159,165, 166,175,178,179,182, 189,216,218-221,403, 404,854,858 C117,118,125,157,161 194,227,228,231,291, 503,504,817,819,821, 920,921,923,938,955 C945-948 C26 C38,40,42,57,65,72, 74,75,91,104,105,108 111,114,115,141, 143-145,153,167,172, 225,226,400,401, 721-724 C89 C234 C16-18,30,33,37,43, 45,49-52,70,98,104, 217,235,729, 1004-1007 |
| 20 | 224 913-0865-640 | CAPACITOR, 470 pF | | |
| 4 | 223 913-0865-620 | CAPACITOR, 0.1 | | |
| 1 | 222 913-0865-560 | CAPACITOR, 0.033 | | |
| 30 | 221 913-0865-500 | CAPACITOR, 0.01 | | |
| 1 | 220 913-0865-440 | CAPACITOR, 3300 pF | | |
| 1 | 219 913-0865-430 | CAPACITOR, 2700 pF | | |
| 22 | 218 913-0865-380 | CAPACITOR, 1000 pF | 25 | |

| | | | | |
|---|------------------|------------------|-------|-------|
| 1 | 253 914-3503-340 | CAPACITOR, 20 pF | 25 | C1003 |
| 3 | 252 628-7676-013 | INSULATOR | 23,24 | |
| 2 | 251 628-7676-014 | INSULATOR | 22 | |

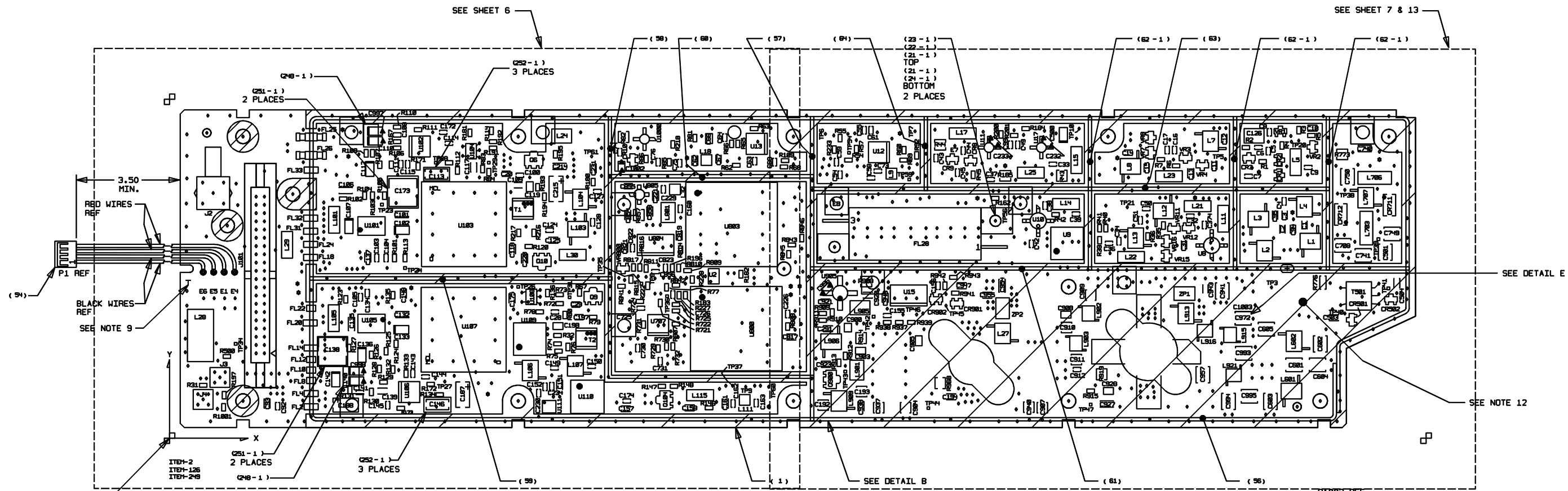
| QTY | ITEM NO. | PART OR IDENT NO. | NOMENCLATURE OR DESCRIPTION | NOTES | REF DESIGNATORS |
|---|----------|-------------------|-----------------------------|-------|-----------------|
| PARTS LIST (US CUSTOMARY MEASUREMENTS ONLY) | | | | | |

| QTY | ITEM NO. | PART OR IDENT NO. | NOMENCLATURE OR DESCRIPTION | NOTES | REF DESIGNATORS |
|---|----------|-------------------|-----------------------------|-------|-----------------|
| PARTS LIST (US CUSTOMARY MEASUREMENTS ONLY) | | | | | |

ROCKWELL COLLINS, INC
400 COLLINS ROAD NE, CEDAR RAPIDS IOWA, 52498

| | | | | |
|-----------------------------------|------------|-----------------|----------------------|-----------|
| PREP. K. BARKER | SIZE D | CAGE CODE 4V792 | DWG NO. 828-3186-002 | REV LTR C |
| ROCKWELL PROPRIETARY INFORMATION. | CHK D. FOY | SCALE NONE | SHEET 3 | |

DIGITAL DATA ONLY, NO MASTER TRACING.

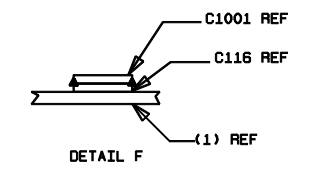
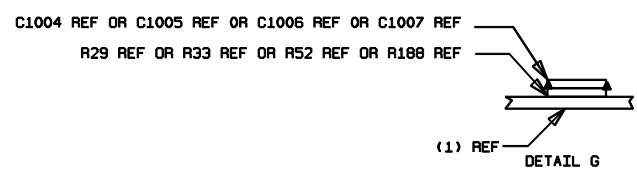
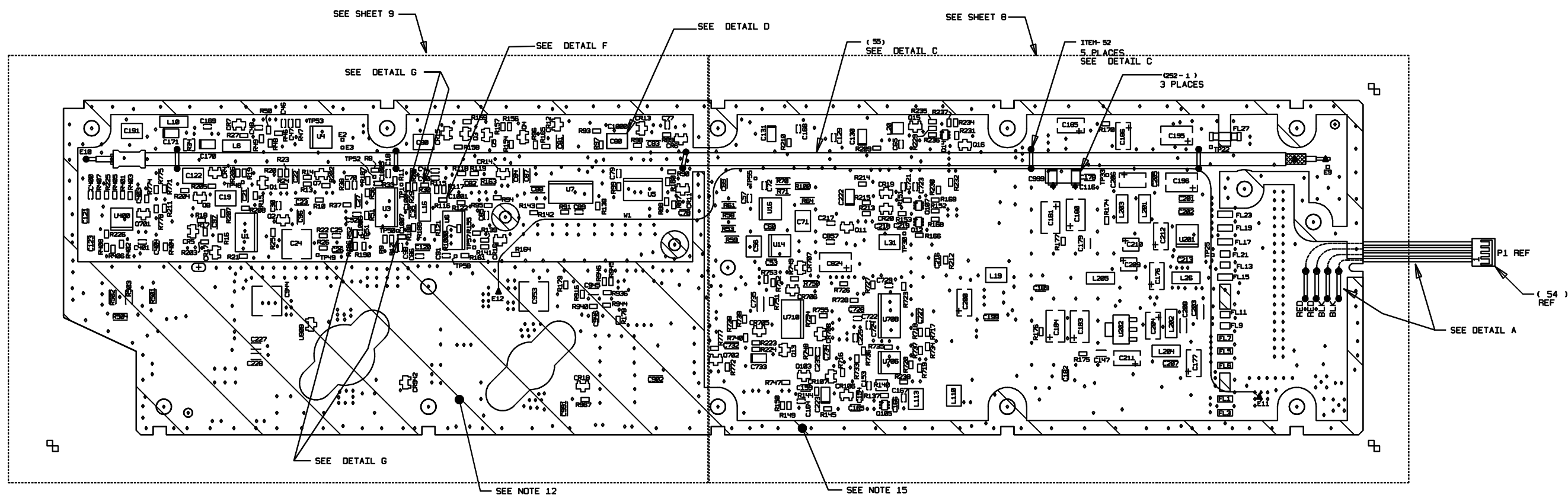
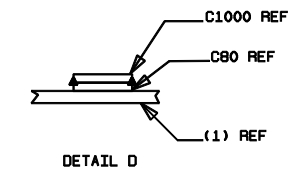
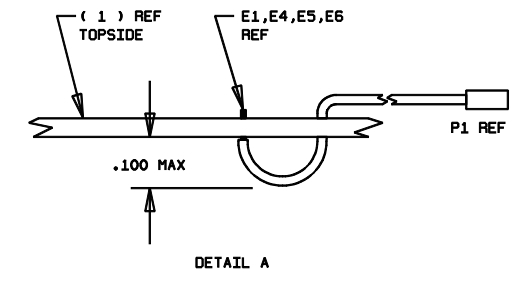
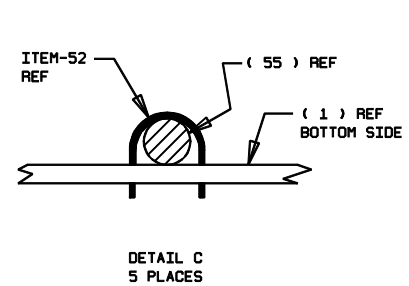


| | | | |
|--|---------------------------|-------------------------|-----------|
| ROCKWELL COLLINS, INC 400 COLLINS ROAD NE, CEDAR RAPIDS IOWA, 52498 | | | |
| PREP K. BARKER 02-JUL-2001 | SIZE D CAGE CODE 4V792 | DWG NO. 828-3186-002 | REV LTR C |
| SCALE NONE | SHEET 4 | | |

ROCKWELL PROPRIETARY INFORMATION.

CHK D. FOY

DIGITAL DATA ONLY, NO MASTER TRACING.



COMPONENTS BOTTOM

ROCKWELL PROPRIETARY INFORMATION.

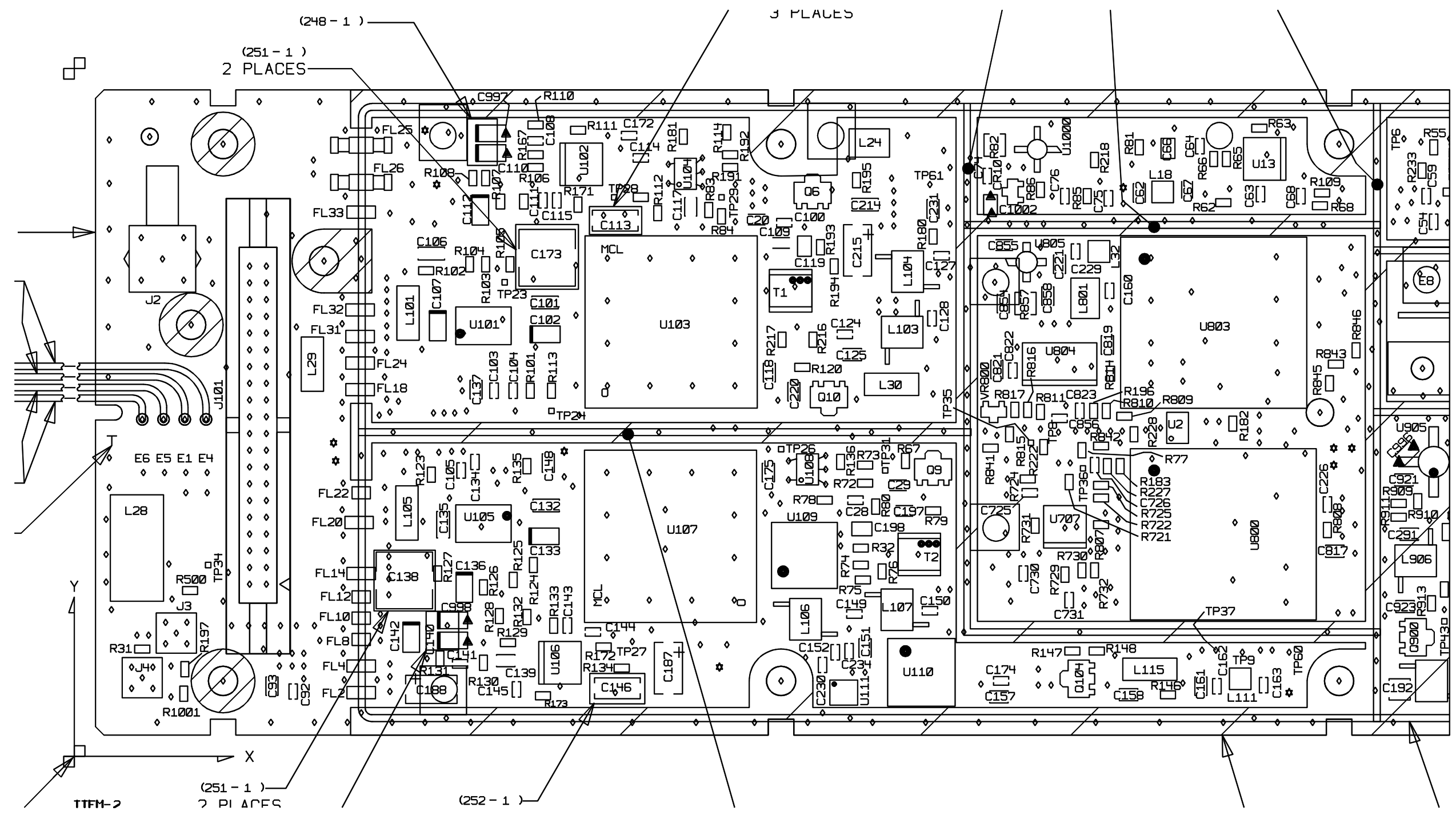
PREP K. BARKER
02-JUL-2001
CHK D. FOY

SIZE D
CAGE CODE 4V792
SCALE NONE

DWG NO. 828-3186-002
REV LTR C
SHEET 5

ROCKWELL COLLINS, INC
400 COLLINS ROAD NE, CEDAR RAPIDS IOWA, 52498

DIGITAL DATA ONLY, NO MASTER TRACING.

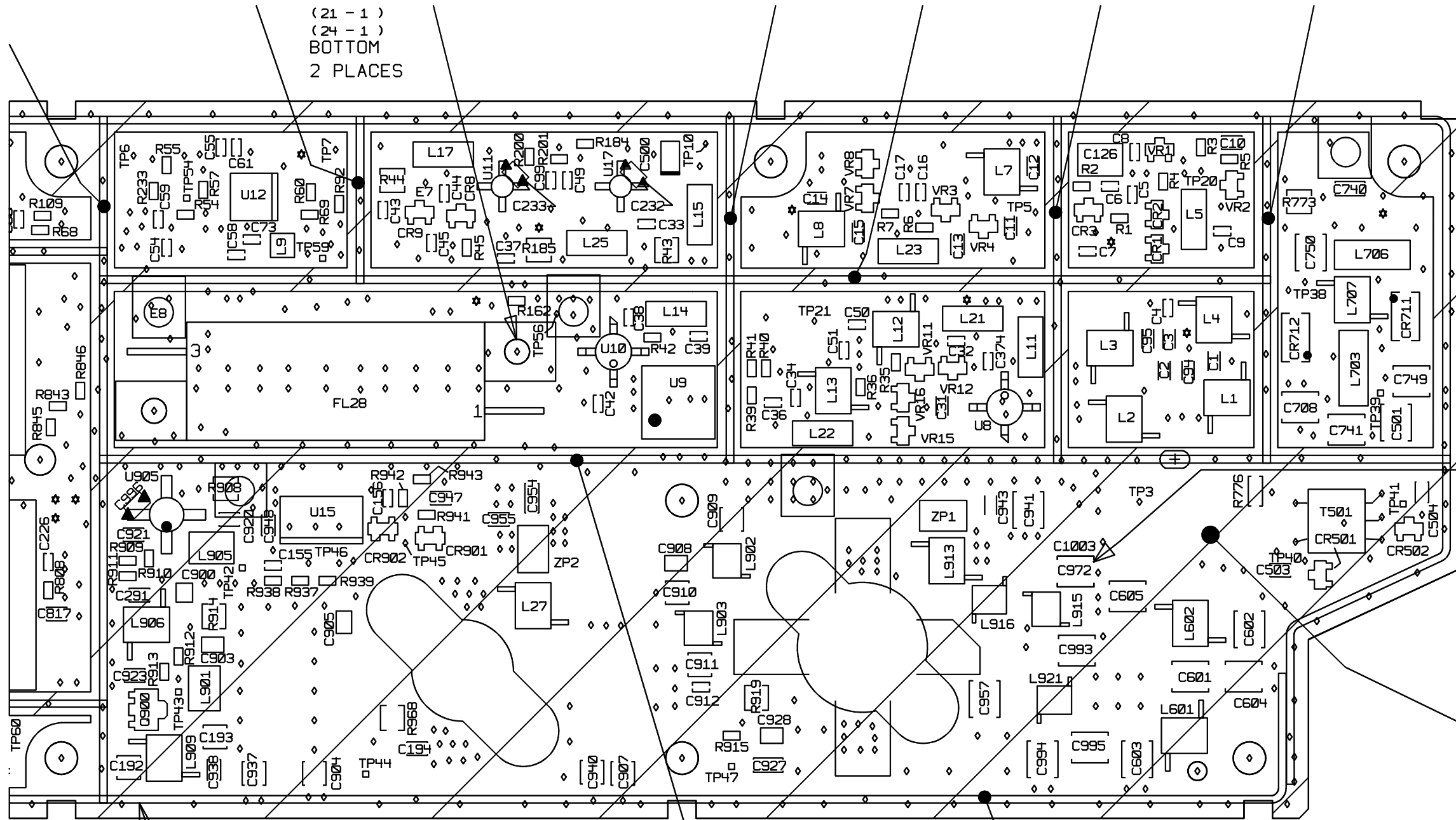


ASSEMBLY DETAIL G

| | | | |
|---|------------|-----------------|----------------------|
| ROCKWELL COLLINS, INC | | | |
| 400 COLLINS ROAD NE, CEDAR RAPIDS IOWA, 52498 | | | |
| PREP K. BARKER | SIZE D | CAGE CODE 4V792 | DWG NO. 828-3186-002 |
| CHK D. FOY | SCALE NONE | REV LTR C | SHEET 6 |

ROCKWELL PROPRIETARY INFORMATION.

DIGITAL DATA ONLY, NO MASTER TRACING.



(21 - 1)
(24 - 1)
BOTTOM
2 PLACES

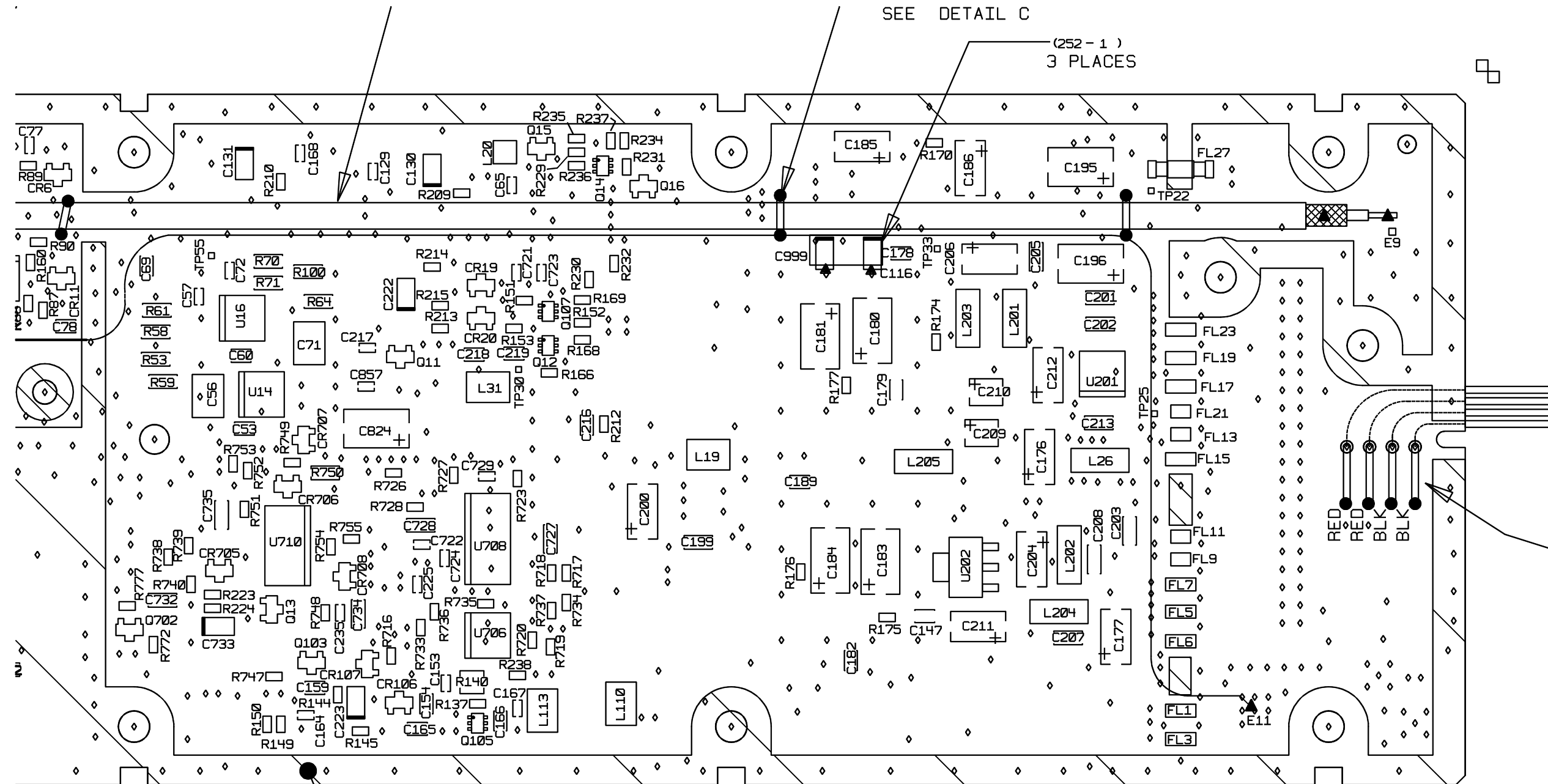
ASSEMBLY DETAIL H

ROCKWELL COLLINS, INC
400 COLLINS ROAD NE, CEDAR RAPIDS IOWA, 52498

| | | | | |
|-------------------------------|------------|-----------------|----------------------|-----------|
| PREP K. BARKER 02-Jul-2001 | SIZE D | CAGE CODE 4V792 | DWG NO. 828-3186-002 | REV LTR C |
| CHK D. FOY | SCALE NONE | | SHEET 7 | |

ROCKWELL PROPRIETARY INFORMATION.

DIGITAL DATA ONLY, NO MASTER TRACING.



ASSEMBLY DETAIL I
COMPONENTS BOTTOM

ROCKWELL PROPRIETARY INFORMATION.

PREP K. BARKER
02-Jul-2001
CHK D. FOY

SIZE D
SCALE NONE

CAGE CODE 4V792
DWG NO. 828-3186-002
REV LTR C
SHEET 8

ROCKWELL COLLINS, INC
400 COLLINS ROAD NE, CEDAR RAPIDS IOWA, 52498

DIGITAL DATA ONLY, NO MASTER TRACING.