

- NOTES:
1. PARENTHETICAL ITEM IDENTIFICATION DENOTES (ITEM FIND NO.-QTY).
  2. REFERENCE DESIGNATORS ARE USED IN LIEU OF ITEM FIND NUMBERS.
  3. 580-6520-001 MAY BE UTILIZED ON THIS ASSEMBLY.
  4. TO BE TESTED AT A HIGHER LEVEL.
  5. SOLDER PER COMMERCIAL REQUIREMENTS (580-5178-000).
  6. MAXIMUM Z TOP DIMENSION SHALL NOT EXCEED 0.668.  
MAXIMUM Z BOTTOM DIMENSION SHALL NOT EXCEED 0.661.
  7. MARK REV LETTER FOLLOWING THE APPROPRIATE LETTERS REV PER 839-0497-001.  
ASSEMBLY IDENTIFIED BY APPLICATION OF MARKING REQUIREMENTS ON FAB PART.
  8. MAXIMUM LEAD PROTRUSION TO BE .100, BOTTOM AND TOP SIDES.
  9. "T" DESIGNATES BOARD TOP SURFACE.
  10. PER MANUFACTURING, PROJECT OR CONTRACT REQUIREMENTS,  
MARK THE MANUFACTURING CONTROL NUMBER FOLLOWING THE  
LETTERS MCN PER 839-0497-001.
  11. POSTCOAT TOP AND BOTTOM SIDES PER 580-5458-001.  
CROSSHATCHED AREAS TO BE FREE OF POSTCOAT, TOP AND BOTTOM.
  12. ALL JUMPER WIRE, IF APPLICABLE, IS 36 GAUGE OR LARGER ETCHED TEFLON  
INSULATED WIRE, U.O.S. BOND WIRE(S) TO BOARD PER 839-0513-001. ROUTING  
OF JUMPERS OPTIONAL U.O.S.
  13. INSTALLED HEIGHT OF ITEM 2 TO BE .598 +/- .005 FROM BOARD BOTTOM SURFACE.
  14. ASSEMBLE ITEM 2 PER 580-5481-001.
  15. DESIGNATORS E3-12 AND P1 ARE FOR REFERENCE ONLY.
  16. FINELINE/FINEPITCH TECHNOLOGY UTILIZED WITH .008 CIRCUIT LINES  
AND .008 MINIMUM CONDUCTOR SPACINGS.
  17. LAP SOLDER WHERE INDICATED BY ◀
  18. REWORK SHALL CONFORM TO PROCESS REQUIREMENTS.

SCHEMATIC AND FAB BOARD APPLICABILITY REF. TABLE					
SCHEMATIC	ALT LTR	FAB BOARD	ALT LTR	CKT CARD ASSY	ALT LTR
828-8585-002	-	826-0007-508	-	828-3185-002	-
828-8585-002	A	826-0007-508	-	828-3185-002	A

REVISIONS			
LTR	DESCRIPTION	DATE	RPVD
A	RL3049	11/30/2000	K.H.

1	9	834-5031-010	CAPACITOR, 100 pF	n	C1
1	8	013-1971-010	CIRCUIT BREAKER, 2037-	17	CB1
1	7	653-4029-177	CABLE ASSY, POWER		
1	6	653-4029-076	RIBBON CABLE ASSY		
1	5	653-4029-077	RIBBON CABLE ASSY		
REF	4	828-8585-002	SCHEMATIC		
56	3	714-1684-020	VARISTOR, 68V		RV1,2,3,4,5,6,7,8,9, 10,11,12,13,14,15,16 17,18,19,20,21,22,23 24,25,26,27,28,29,30 31,32,33,34,35,36,37 38,39,40,41,42,43,44 45,46,47,48,49,50,51 52,53,54,55,56
66	2	372-2604-013	CONTACT,ELECTRICAL	13,14	X
1	1	826-0007-508	PIB		

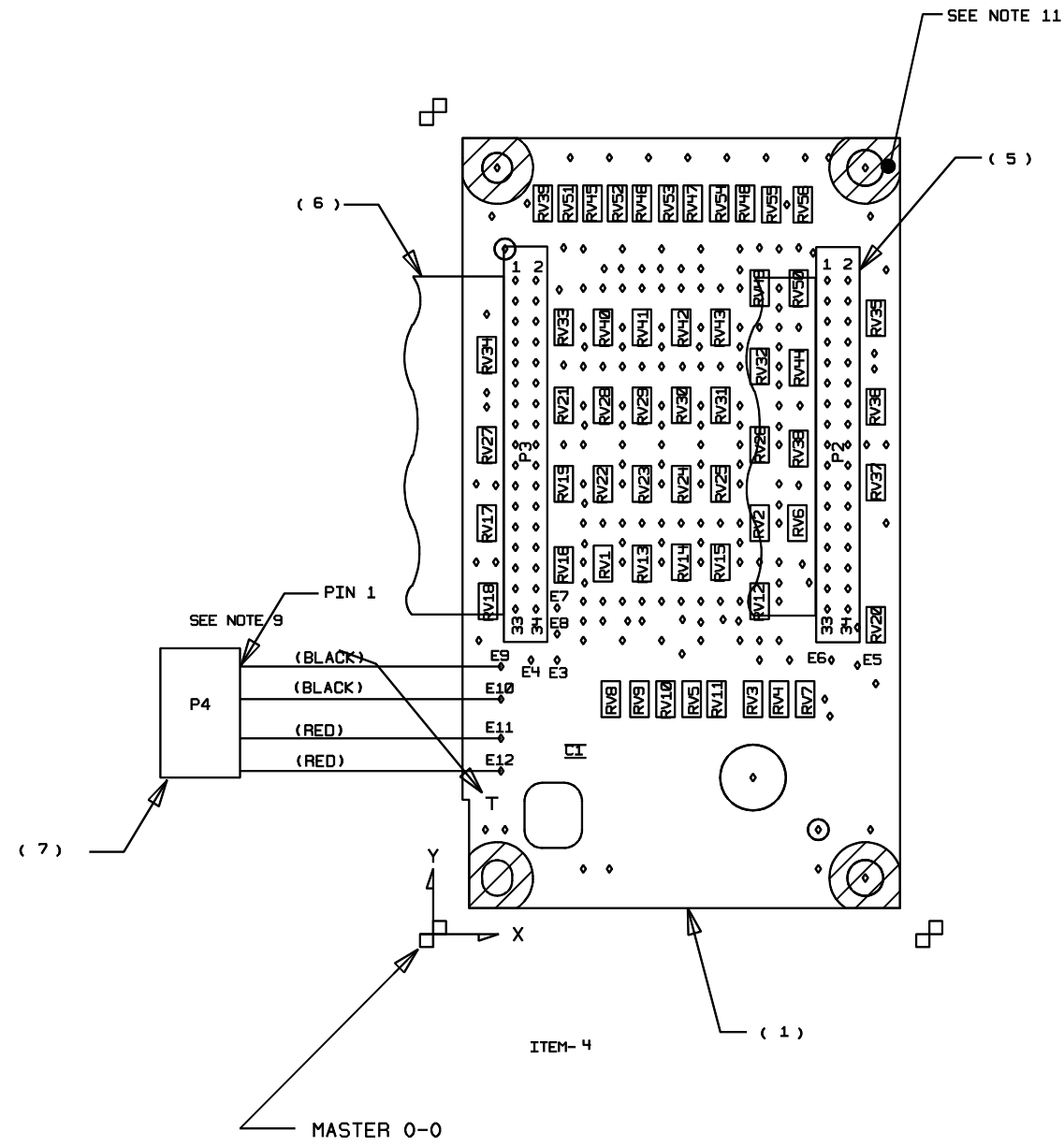
QTY/ITEM NO.	PART OR IDENT NO.	NOMENCLATURE OR DESCRIPTION	NOTES	REF DESIGNATORS
PARTS LIST (US CUSTOMARY MEASUREMENTS ONLY)				

ROCKWELL COLLINS, INC			
400 COLLINS ROAD NE, CEDAR RAPIDS, IOWA 52498			
PREP K.G. BARKER Feb 02 2001		CIRCUIT CARD ASSEMBLY, VHF-4000 REAR INTERCONNECT A1	
CHK J. LUTZ	SIZE D	CAGE CODE 4V792	REV LTR A
ENG APVD K. HANBY	DWG NO. 828-3185-002	SHEET 1 OF 4	
SCALE NONE		SHEET 1 OF 4	

ROCKWELL PROPRIETARY INFORMATION.

DIGITAL DATA ONLY, NO MASTER TRACING.

NFP  REL  CR 2 NO 1

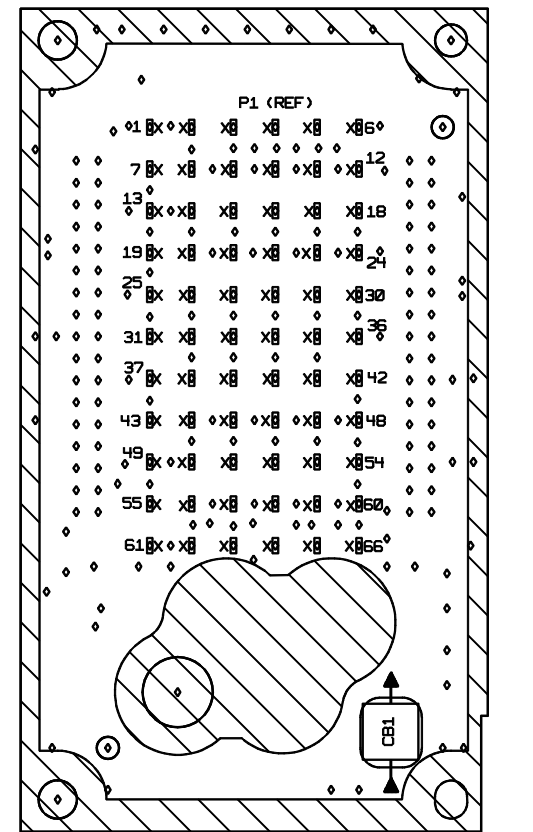


ROCKWELL COLLINS, INC  
400 COLLINS ROAD NE, CEDAR RAPIDS IOWA, 52498

PREP K.G. BARKER 02-Feb-2001	SIZE D	CAGE CODE 4V792	DWG NO. 828-3185-002	REV LTR A
CHK J. LUTZ	SCALE NONE	SHEET 2		

ROCKWELL PROPRIETARY INFORMATION.

DIGITAL DATA ONLY, NO MASTER TRACING.



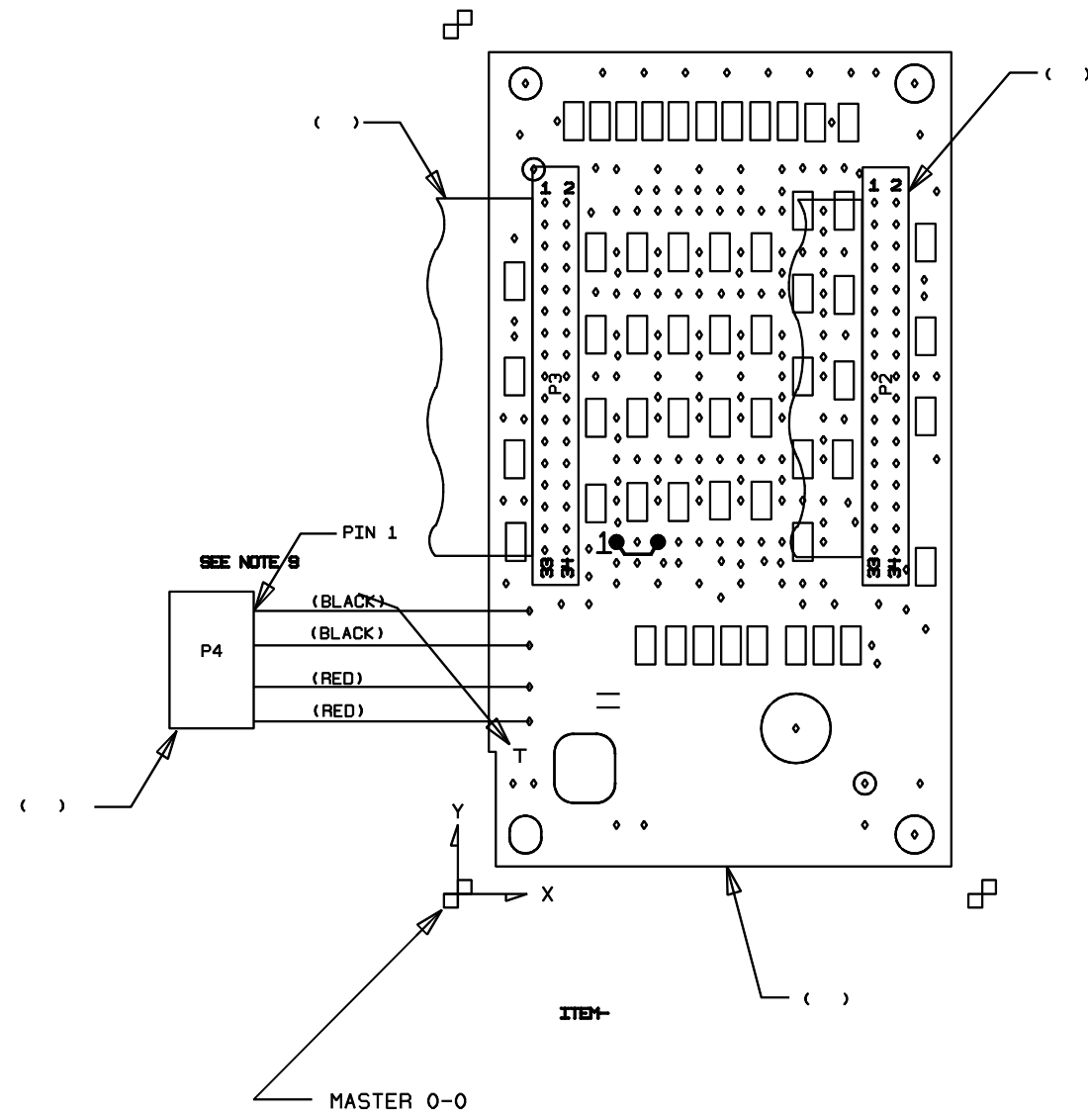
BOTTOM COMPONENTS

ROCKWELL COLLINS, INC  
400 COLLINS ROAD NE, CEDAR RAPIDS IOWA, 52498

PREP K.G. BARKER 02-Feb-2001	SIZE D	CAGE CODE 4V792	DWG NO. 828-3185-002	REV LTR A
CHK J. LUTZ	SCALE NONE	SHEET 3		

ROCKWELL PROPRIETARY INFORMATION.

DIGITAL DATA ONLY, NO MASTER TRACING.



JUMPERS TOP

ROCKWELL PROPRIETARY INFORMATION.

PREP	K.G. BARKER 07-Feb-2001
CHK	J. LUTZ

ROCKWELL COLLINS, INC 400 COLLINS ROAD NE, CEDAR RAPIDS IOWA, 52498			
SIZE	CAGE CODE	DWG NO.	REV
D	4V792	828-3185-002	A
SCALE	NONE	SHEET	4

DIGITAL DATA ONLY, NO MASTER TRACING.