

- NOTES:
1. PARENTHETICAL ITEM IDENTIFICATION DENOTES ITEM FIND NO. (01).
  2. REFERENCE DESIGNATORS ARE USED IN LIEU OF ITEM FIND NUMBERS.
  3. 580-6520-001 MAY BE UTILIZED ON THIS ASSEMBLY.
  4. TO BE TESTED AT A HIGHER LEVEL.
  5. SOLDER PER COMMERCIAL REQUIREMENTS (580-5178-000).
  6. MAXIMUM Z TOP DIMENSION SHALL NOT EXCEED 0.250.  
MAXIMUM Z BOTTOM DIMENSION SHALL NOT EXCEED 0.100.
  7. MARK REV LETTER FOLLOWING THE APPROPRIATE LETTERS REV PER 839-0497-001.  
ASSEMBLY IDENTIFIED BY APPLICATION OF MARKING REQUIREMENTS ON FAB PART.
  8. MAXIMUM LEAD PROTRUSION TO BE .000.
  9. "\*" DESIGNATES BOARD TOP SURFACE.
  10. PER MANUFACTURING, PROJECT OR CONTRACT REQUIREMENTS,  
MARK THE MANUFACTURING CONTROL NUMBER FOLLOWING THE  
LETTERS NON PER 839-0497-001.
  11. CAUTION: THIS ASSEMBLY CONTAINS ELECTROSTATIC SENSITIVE  
DEVICES. HANDLE PER 489-0004-001. IDENTIFY PER 580-6535-001.  
LOCATE ITEM 7 APPROXIMATELY AS SHOWN.
  12. ALL JUMPER WIRE, IF APPLICABLE, IS 36 GAUGE OR LARGER ETCHED TEFLON  
INSULATED WIRE, U.O.S. BOND WIRE(S) TO BOARD PER 580-5573-001. ROUTING  
OF JUMPERS OPTIONAL U.O.S.
  13. FINELINE/FINEPITCH TECHNOLOGY UTILIZED WITH .007 CIRCUIT LINES  
AND .007 MINIMUM CONDUCTOR SPACINGS.
  14. DESIGNATORS E1-21, ARE FOR REFERENCE ONLY.
  15. U101 ITEM 8 SHALL BE ORIENTED WITH MARKING "85X" AS SHOWN.
  16. LAP SOLDER WHERE INDICATED BY ◀ .
  17. APPLY ITEM 78 TO CROSSHATCHED AREAS INDICATED. TRIM AS REQUIRED.  
TRIM AROUND THE OPENING ON THE BOTTOM SIDE. SOLDER JOINT BETWEEN  
EXISTING CLAD AND ITEM 78. EXCESSIVE SOLDER BUILD UP NOT PERMITTED.
  18. REWORK SHALL CONFORM TO PROCESS REQUIREMENTS.
  19. USE ITEM 79 FOR JUMPER NUMBER 1.
  20. SOLDER FILLET NOT REQUIRED UNDER HEEL OF LEAD INDICATED FOR ITEM 9  
AND ALL LEADS OF ITEM 20 AND ITEM 49.
  21. LEADS OF ITEM 48 AND ITEM 75 MAY NOT MEET MINIMUM 25% SOLDER  
FILLET REQUIREMENTS.
  22. ITEM 27 AND LEAD INDICATED OF ITEM 20 MAY EXCEED 33% MAXIMUM OVERHANG.

SCHEMATIC	ALT LTR	FAB BOARD	ALT LTR	CKT CARD ASSY	ALT LTR
828-8774-002	-	826-0008-008	-	828-3374-002	-
828-8774-002	A	826-0008-008	-	828-3374-002	A
828-8774-002	B	826-0008-008	-	828-3374-002	B

LTR	DESCRIPTION	DATE	BY
A	RL5085	05/09/2001	HS
B	RW9303	07/11/2001	N.S.

QTY	ITEM NO.	DESCRIPTION	REF	QTY	ITEM NO.	DESCRIPTION	REF
1	57 914-0664-070	CAPACITOR, 0.7 pF	C121	1	57 914-0664-070	CAPACITOR, 0.7 pF	C121
1	58 913-3676-010	CAPACITOR, 0.001	C130,204,211,212	1	58 913-3676-010	CAPACITOR, 0.001	C130,204,211,212
2	55 913-3667-150	CAPACITOR, 100 pF	C122,123	2	55 913-3667-150	CAPACITOR, 100 pF	C122,123
3	54 913-3667-090	CAPACITOR, 33 pF	C109,114,115	3	54 913-3667-090	CAPACITOR, 33 pF	C109,114,115
4	53 913-3667-070	CAPACITOR, 22 pF	C203,205,208,209	4	53 913-3667-070	CAPACITOR, 22 pF	C203,205,208,209
1	52 913-0866-430	CAPACITOR, .0033	C133	1	52 913-0866-430	CAPACITOR, .0033	C133
1	51 913-0863-050	CAPACITOR, 0.1	C214	1	51 913-0863-050	CAPACITOR, 0.1	C214
1	50 252-1011-230	FERRITE,CHIP	L301-303,305	1	50 252-1011-230	FERRITE,CHIP	L301-303,305
1	19 813-0030-030	TRANSISTOR, 68139	20	Q202	1	19 813-0030-030	TRANSISTOR, 68139
3	18 834-6156-050	DIODE, P1N	21	CR103,104,106	3	18 834-6156-050	DIODE, P1N
REF	47 828-8774-002	SCHEMATIC			REF	47 828-8774-002	SCHEMATIC
1	16 714-1690-010	VARIABLE, 14V	E100	1	16 714-1690-010	VARIABLE, 14V	E100
1	14 705-3540-230	RESISTOR, 150	R205	1	14 705-3540-230	RESISTOR, 150	R205
2	13 705-3540-210	RESISTOR, 130	R213,215	2	13 705-3540-210	RESISTOR, 130	R213,215
1	12 705-3540-100	RESISTOR, 100	R114	1	12 705-3540-100	RESISTOR, 100	R114
3	11 705-3539-820	RESISTOR, 51.1	R101,102,104	3	11 705-3539-820	RESISTOR, 51.1	R101,102,104
1	10 705-3539-750	RESISTOR, 43.2	R214	1	10 705-3539-750	RESISTOR, 43.2	R214
1	9 705-3539-470	RESISTOR, 22.1	R115	1	9 705-3539-470	RESISTOR, 22.1	R115
1	8 705-3539-430	RESISTOR, 20	R212	1	8 705-3539-430	RESISTOR, 20	R212
1	7 705-3539-200	RESISTOR, 11.5	R207	1	7 705-3539-200	RESISTOR, 11.5	R207
1	6 705-3539-140	RESISTOR, 10	R110	1	6 705-3539-140	RESISTOR, 10	R110
1	5 705-3537-660	RESISTOR, 5.62 k	R106	1	5 705-3537-660	RESISTOR, 5.62 k	R106
1	4 705-3537-600	RESISTOR, 4.75 k	R211	1	4 705-3537-600	RESISTOR, 4.75 k	R211
1	3 705-3537-290	RESISTOR, 2 k	R202	1	3 705-3537-290	RESISTOR, 2 k	R202
2	32 705-3535-690	RESISTOR, 432	R206,208	2	32 705-3535-690	RESISTOR, 432	R206,208
1	29 705-3535-400	RESISTOR, 1.5 k	R210	1	29 705-3535-400	RESISTOR, 1.5 k	R210
1	28 705-3535-280	RESISTOR, 4.02 k	R203	1	28 705-3535-280	RESISTOR, 4.02 k	R203
2	27 833-6626-430	RESISTOR, 274	R105,107	2	27 833-6626-430	RESISTOR, 274	R105,107
1	26 705-3535-200	RESISTOR, 1 k	R209	1	26 705-3535-200	RESISTOR, 1 k	R209
1	25 705-3535-190	RESISTOR, 3.01 k	R204	1	25 705-3535-190	RESISTOR, 3.01 k	R204
1	24 705-3535-020	RESISTOR, 10 k	R201	1	24 705-3535-020	RESISTOR, 10 k	R201
5	23 705-2439-050	RESISTOR, 1 k	R100,109,111-113	5	23 705-2439-050	RESISTOR, 1 k	R100,109,111-113
1	22 351-4124-010	IC, ASD06H2-93	U201	1	22 351-4124-010	IC, ASD06H2-93	U201
1	21 353-8166-010	DIODE, G60003-150A	CR107	1	21 353-8166-010	DIODE, G60003-150A	CR107
1	20 244-0022-010	DIODE, HNS-2800	20,22	CR102	1	20 244-0022-010	DIODE, HNS-2800
1	19 353-8164-010	DIODE, HNS3904	CR113	1	19 353-8164-010	DIODE, HNS3904	CR113
5	18 353-8163-010	DIODE, M48617-1056	CR108-112	5	18 353-8163-010	DIODE, M48617-1056	CR108-112
1	17 353-6823-010	DIODE, M4800MS-137	21	CR105	1	17 353-6823-010	DIODE, M4800MS-137
2	16 352-9114-020	TRANSISTOR, 2907A	Q201,203	2	16 352-9114-020	TRANSISTOR, 2907A	Q201,203
1	11 352-1302-330	TRANSISTOR, M2950M02	Q204	1	11 352-1302-330	TRANSISTOR, M2950M02	Q204
1	9 351-9604-600	IC, M4C20758	20	U102	1	9 351-9604-600	IC, M4C20758
1	8 351-4122-010	IC, M4A-85563	15	U101	1	8 351-4122-010	IC, M4A-85563
1	7 280-2745-040	LABEL,ESD	11		1	7 280-2745-040	LABEL,ESD
2	6 249-0006-020	CAPACITOR, 1.5 pF	C309,313	2	6 249-0006-020	CAPACITOR, 1.5 pF	C309,313
1	5 249-0006-010	CAPACITOR, 0.6-2.5 pF	C310,322-324	1	5 249-0006-010	CAPACITOR, 0.6-2.5 pF	C310,322-324
1	4 240-2915-230	COIL, 47 nH	L110	1	4 240-2915-230	COIL, 47 nH	L110
2	3 240-2915-130	COIL, 12 nH	L109,201	2	3 240-2915-130	COIL, 12 nH	L109,201
1	2 240-2052-080	COIL, 28 nH	L135	1	2 240-2052-080	COIL, 28 nH	L135
1	826-0008-008	PHI		1	826-0008-008	PHI	

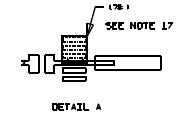
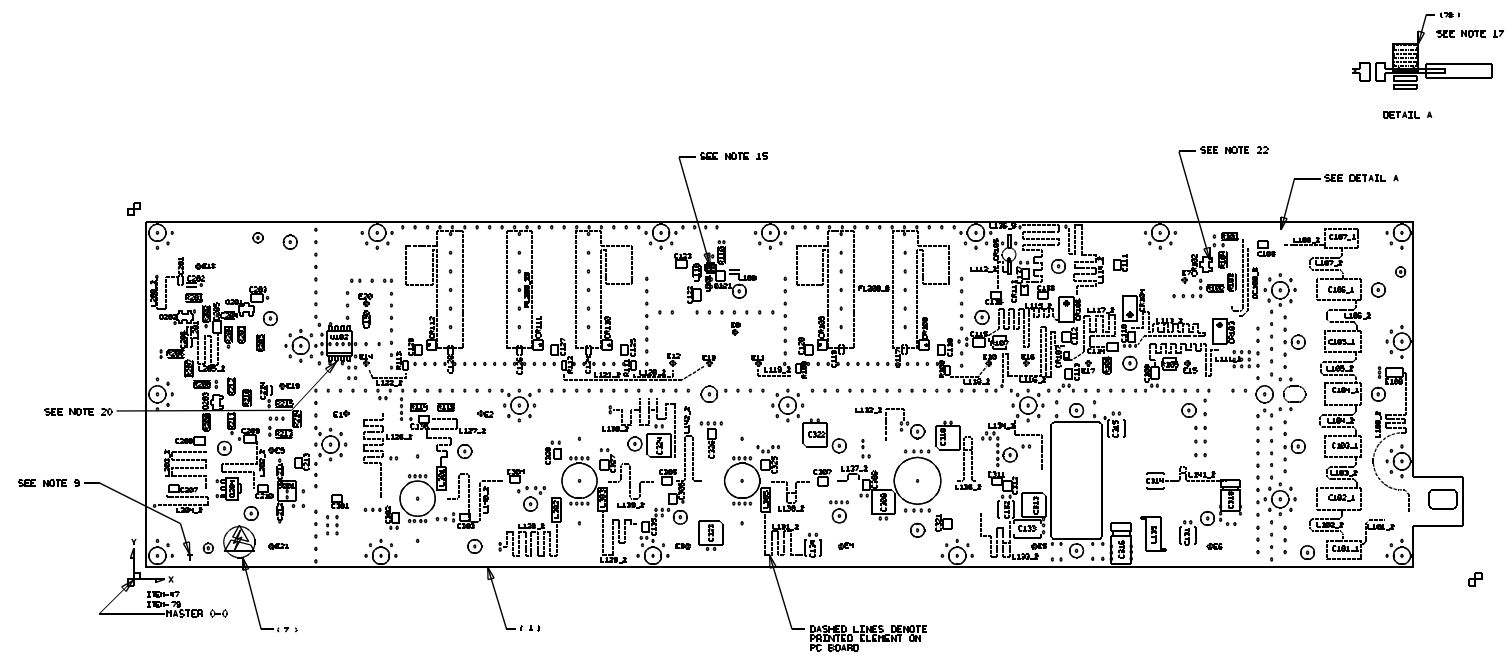
QTY	ITEM NO.	DESCRIPTION	REF
1	81 914-3500-060	CAPACITOR, 3.9 pF	C321
1	80 705-3535-230	RESISTOR, 243	R103
0.01	79 421-0023-000	WIRE, 6306800XXXX(FT) 19	
0.02	78 014-1376-060	TAPE 17	
1	77 322-0596-180	CAPACITOR, 0.6-4.5 pF	C316
1	76 322-0596-130	CAPACITOR, 0.4-2.5 pF	C318
4	75 914-3503-410	CAPACITOR, 39 pF	21
1	74 914-3503-140	CAPACITOR, 3 pF	C315
1	73 914-3500-160	CAPACITOR, 4.7 pF	C112
1	72 914-3500-440	CAPACITOR, 2.7 pF	C306
3	71 914-3500-430	CAPACITOR, 2.2 pF	C325-327
2	70 914-3500-370	CAPACITOR, 100 pF	C305,307
5	69 914-3500-290	CAPACITOR, 47 pF	C118,120,125,127,129
11	68 914-3500-250	CAPACITOR, 33 pF	C108,111,113,116,135 136,138,213,301,304, 311
1	67 914-3500-180	CAPACITOR, 16 pF	C210
2	66 914-3500-130	CAPACITOR, 10 pF	C110,137
1	65 914-3500-100	CAPACITOR, 6.8 pF	C303
1	64 914-3500-120	CAPACITOR, 8.2 pF	C312
3	63 914-3500-050	CAPACITOR, 3 pF	C302,308,328
1	62 914-3500-040	CAPACITOR, 2.4 pF	C207
1	61 914-0663-300	CAPACITOR, 4.7 pF	C201
1	60 914-0663-260	CAPACITOR, 3.3 pF	C202
1	59 914-0663-240	CAPACITOR, 2.7 pF	C206
5	58 914-0663-050	CAPACITOR, 0.5 pF	C117,119,124,126,128

QTY	ITEM NO.	DESCRIPTION	REF
1	81 914-3500-060	CAPACITOR, 3.9 pF	C321
1	80 705-3535-230	RESISTOR, 243	R103
0.01	79 421-0023-000	WIRE, 6306800XXXX(FT) 19	
0.02	78 014-1376-060	TAPE 17	
1	77 322-0596-180	CAPACITOR, 0.6-4.5 pF	C316
1	76 322-0596-130	CAPACITOR, 0.4-2.5 pF	C318
4	75 914-3503-410	CAPACITOR, 39 pF	21
1	74 914-3503-140	CAPACITOR, 3 pF	C315
1	73 914-3500-160	CAPACITOR, 4.7 pF	C112
1	72 914-3500-440	CAPACITOR, 2.7 pF	C306
3	71 914-3500-430	CAPACITOR, 2.2 pF	C325-327
2	70 914-3500-370	CAPACITOR, 100 pF	C305,307
5	69 914-3500-290	CAPACITOR, 47 pF	C118,120,125,127,129
11	68 914-3500-250	CAPACITOR, 33 pF	C108,111,113,116,135 136,138,213,301,304, 311
1	67 914-3500-180	CAPACITOR, 16 pF	C210
2	66 914-3500-130	CAPACITOR, 10 pF	C110,137
1	65 914-3500-100	CAPACITOR, 6.8 pF	C303
1	64 914-3500-120	CAPACITOR, 8.2 pF	C312
3	63 914-3500-050	CAPACITOR, 3 pF	C302,308,328
1	62 914-3500-040	CAPACITOR, 2.4 pF	C207
1	61 914-0663-300	CAPACITOR, 4.7 pF	C201
1	60 914-0663-260	CAPACITOR, 3.3 pF	C202
1	59 914-0663-240	CAPACITOR, 2.7 pF	C206
5	58 914-0663-050	CAPACITOR, 0.5 pF	C117,119,124,126,128

PARTS LIST (US CUSTOMARY MEASUREMENTS ONLY)

PARTS LIST (US CUSTOMARY MEASUREMENTS ONLY)

ROCKWELL COLLINS, INC 400 COLLINS ROAD NE, CEDAR RAPIDS, IOWA 52408			
PREP BY: LUYE JUL 11 2001			
CIRCUIT CARD ASSEMBLY, RECEIVER/TRANSMITTER			
DWG NO: 828-3374-002	REV LTR: B	TITLE: 4V792	SCALE: NONE
SHEET 1 OF 4		DIGITAL DATA ONLY, NO MASTER TRACING.	



ROCKWELL COLLINS, INC

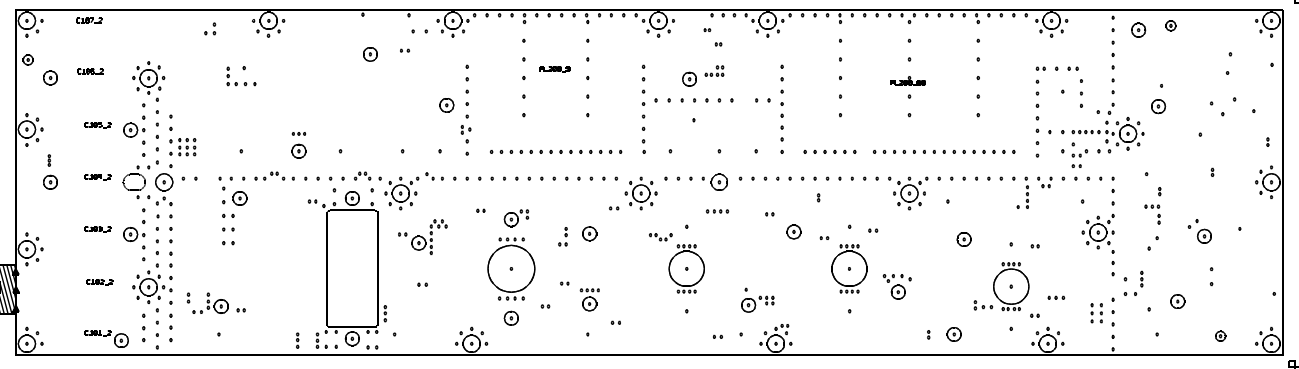
1400 COLLINS ROAD NE, CEDAR RAPIDS IOWA, 52498

PREP P. LOVE	DRG NO. 828-3374-002	REV B
DATE 11-11-2001	SIZE D	SCALE 4V792

ROCKWELL PROPRIETARY INFORMATION.	CHK P. SCHLISE	SCALE NONE	SHEET 2
-----------------------------------	----------------	------------	---------

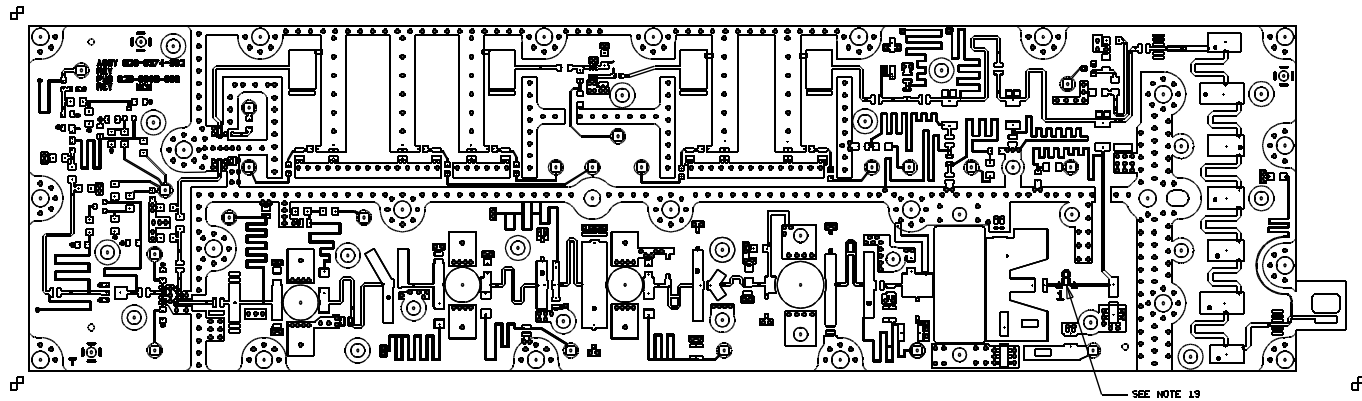
DIGITAL DATA ONLY, NO PAPER TRACING.

SEE NOTE 17

COMPONENT BOTTOM

ROCKWELL PROPRIETARY INFORMATION.		ROCKWELL COLLINS, INC 1400 COLLINS ROAD NE, CEDAR RAPIDS IOWA, 52498	
PREP P. LOVE 11-30-2001	SIZE D 4V792	DRG NO. 828-3374-002	REV LTH B
CHK P. SEARISE	SCALE NONE	SHEET 3	
DIGITAL DATA ONLY, NO PAPER TRACING.			



JUMPER TOP

ROCKWELL COLLINS, INC			
1400 COLLINS ROAD NE, CEDAR RAPIDS IOWA, 52498			
PREP P. LOVE	SIZE D	DWG NO. 828-3374-002	REV B
11-11-2001	4V792		LTB
CHK P. SCHLISE	SCALE NONE	SHEET 4	

ROCKWELL PROPRIETARY INFORMATION. DIGITAL DATA ONLY. NO PAPER TRACING.