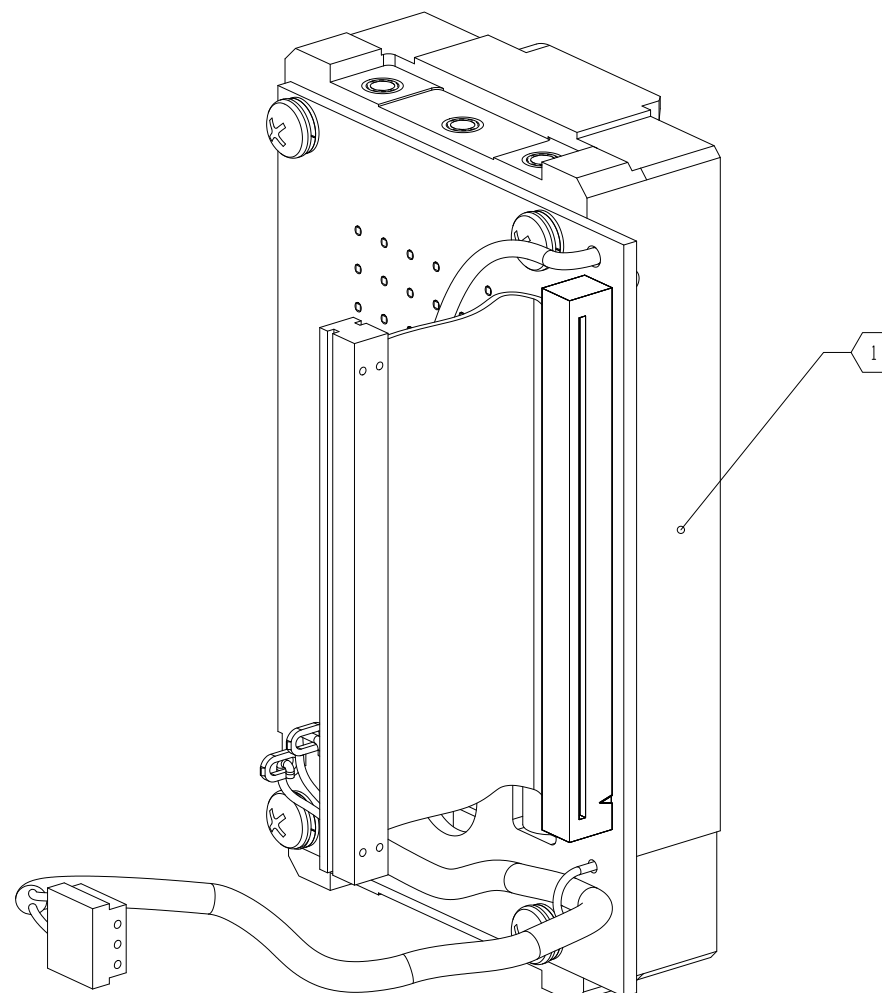


NOTES:

1. MARK ASSY 653-4130-001, REV AND REV LETTER, LOCATED APPROX AS SHOWN, PER 839-0497-001.
2. ITEM 11 TO BE POSITIONED AS SHOWN.
3. PRESS ITEM 9 FLUSH TO SURFACE OF ITEM 10. CENTER ITEM 9 ON PINS OF ITEM 10.
4. DARKENED SEGMENT OF ITEM 6 INDICATES EXTENDED PORTION OF PIN.
5. PRESS ITEM 6 INTO ITEM 8. AFTER ASSEMBLY, APPLY A DROP OF ITEM 1 TO BASE OF ITEM 6 WHERE INDICATED.

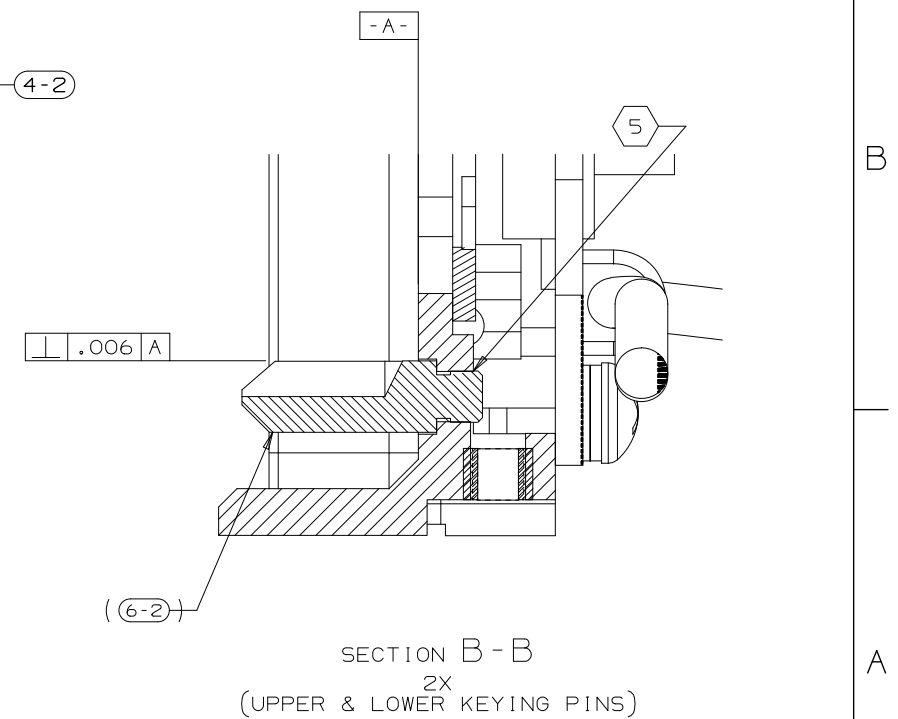
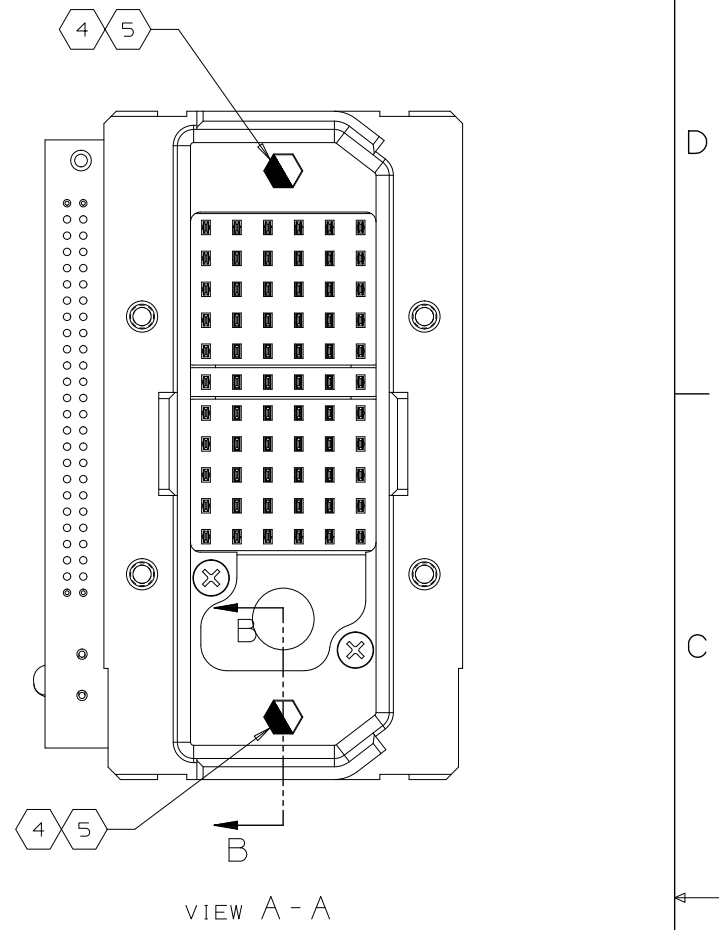
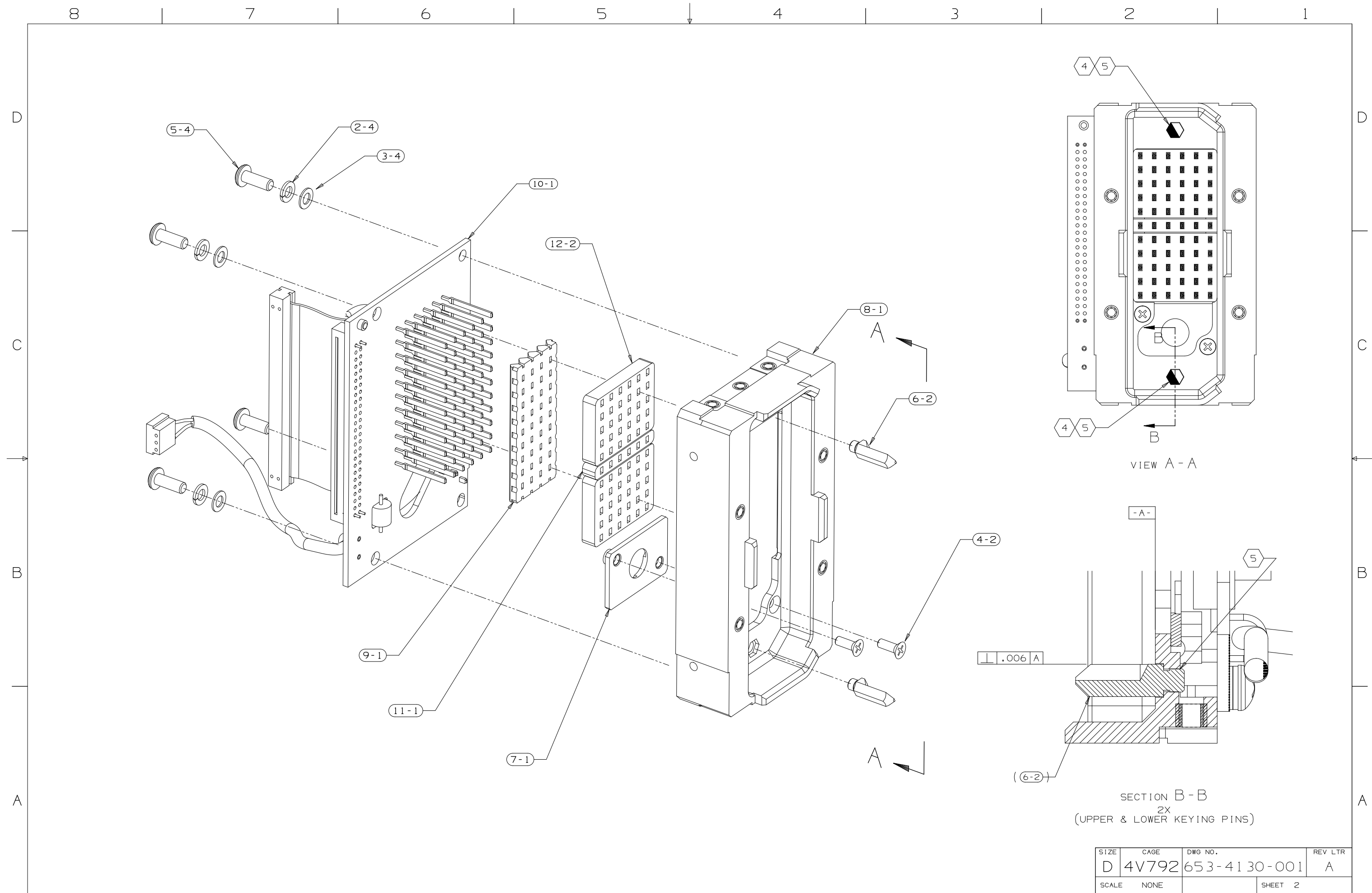
REVISIONS			
LTR	REVISION NO.	DATE	APVD
A	RL807B	01-05-14	CDF



QTY	ITEM NO.	PART OR IDENTIFYING NUMBER	NOMENCLATURE OR DESCRIPTION	DOCUMENT NO	CAGEC	NOTES	REF DESIGNATOR
2	12	852-1003-050	SHIELDING BLOCK, FERRITE				
1	11	852-1003-040	SHIELDING BLOCK, FERRITE			2	
1	10	828-3371-002	CKT CD ASSY, DME-4000 REAR INTERCONNECT			3	
1	9	653-4177-002	HOUSING, SPACER-FERRITE 44 POS			3	
1	8	653-4124-001	HIRF, REAR PANEL 2.0			5	
1	7	653-4119-001	PLATE, CONNECTOR				
2	6	634-1115-001	PIN, KEYING - CONNECTOR			4,5	
4	5	343-0134-000	SCREW, .112-40 X .31 PNH				
2	4	342-0133-000	SCREW, .086-56 X .25 FLH				
4	3	310-0740-200	WASHER, FLAT - .209 OD X .115 ID				
4	2	310-0279-000	WASHER, LOCK - .115 ID				
AR	1	005-1230-020	LIQUID LOCKING			5	

NOTES LISTED BELOW MARKED <input checked="" type="checkbox"/> ARE APPLICABLE TO THIS DRAWING <input type="checkbox"/> SPACE/USAGE PRECLUDES IDENTIFICATION MARKING. <input type="checkbox"/> 580-6520-001 MAY BE UTILIZED ON THIS ASSY. <input type="checkbox"/> SOLDER PER 580-5178-000. <input type="checkbox"/> SPOT WELD PER 580-5125-000 LOCATED APPROX AS SHOWN. <input type="checkbox"/> FUSION WELD PER 839-2219-001, CLASS C. <input type="checkbox"/> FABRICATION ASSY PRACTICES PER 839-5402-001.	UNLESS OTHERWISE SPECIFIED DIMENSIONS ARE IN INCHES  DIMENSIONING AND TOLERANCING INTERPRETED PER ANSI Y14.5M-1982  PART SHALL BE INTERPRETED IN ACCORDANCE WITH 839-5400-001	<b>ROCKWELL INTERNATIONAL CORPORATION</b> COLLINS COMMERCIAL AVIONICS CEDAR RAPIDS, IOWA 52498			
		PREP 00-09-28 P. R. MONDOR  CHK 00-09-28 G.A. RIVERS		<b>REAR, MODULE</b>	
PARENTHEICAL INFORMATION IS FOR REFERENCE ONLY. SYMBOL IDENTIFICATION INTERPRETATION: (ITEM NO) OR (ITEM NO-QTY)  ALL SHEETS ARE THE SAME REVISION STATUS	ROCKWELL INTERNATIONAL PROPRIETARY INFORMATION. DISSEMINATION OUTSIDE ROCKWELL INTERNATIONAL TO BE CLEARED THROUGH THE PATENT COUNSEL.	ENG APVD 00-09-28 C.D. FOY  MFG APVD	SIZE D CAGE 4V792 DWG NO. 653-4130-001 SCALE NONE	REV LTR A SHEET 1 OF 2	

**CAUTION**  
 THIS DRAWING CREATED BY COMPUTER INPUT DO NOT REVISE MANUALLY DATA EXISTS IN C.A.MECH DFTG DATA FILE: 653-4130-001.prt UNIGRAPHICS II V15.0



SIZE	CAGE	DWG NO.	REV LTR
D	4V792	653-4130-001	A
SCALE	NONE	SHEET 2	