

- NOTES:
1. PARENTHETICAL ITEM IDENTIFICATION DENOTES (ITEM FIND NO.-011).
 2. REFERENCE DESIGNATORS ARE USED IN LIEU OF ITEM FIND NUMBERS.
 3. 580-6520-001 MAY BE UTILIZED ON THIS ASSEMBLY.
 4. TO BE TESTED AT A HIGHER LEVEL.
 5. SOLDER PER COMMERCIAL REQUIREMENTS (580-5178-000).
 6. MAXIMUM Z TOP DIMENSION SHALL NOT EXCEED 0.670.
MAXIMUM Z BOTTOM DIMENSION SHALL NOT EXCEED 0.180.
 7. MARK REV LETTER FOLLOWING THE APPROPRIATE LETTERS REV PER 839-0497-001.
ASSEMBLY IDENTIFIED BY APPLICATION OF MARKING REQUIREMENTS ON FAB PART.
 8. MAXIMUM LEAD PROTRUSION TO BE .060.
 9. "*" DESIGNATES BOARD TOP SURFACE.
 10. PER MANUFACTURING, PROJECT OR CONTRACT REQUIREMENTS,
MARK THE MANUFACTURING CONTROL NUMBER FOLLOWING THE
LETTERS NON PER 839-0497-001.
 11. CAUTION THIS ASSEMBLY CONTAINS ELECTROSTATIC SENSITIVE
DEVICES. HANDLE PER 489-0004-001. IDENTIFY PER 580-6535-001.
LOCATE ITEM J1 APPROXIMATELY AS SHOWN.
 12. POSTCOAT TOP AND BOTTOM SIDES PER 580-5158-001.
CROSSHATCHED AREAS TO BE FREE OF POSTCOAT, TOP AND BOTTOM.
 13. ALL JUMPER WIRE, IF APPLICABLE, IS 30 GAUGE ETCHED TEFLON INSULATED WIRE,
U.O.S. BOND WIRE(S) TO BOARD PER 580-5573-001. ROUTING OF JUMPERS
OPTIONAL U.O.S.
 14. DESIGNATORS E1 - E23 ARE FOR REFERENCE ONLY.
 15. INSTALL ITEM 157 FROM SIDE SHOWN. SOLDER TO ITEM J ON OPPOSITE
SIDE.
 16. BOND C122 ON TOP C121; C124 ON TOP C125; R137 ON TOP R129; R138 ON TOP R124
USING ITEM 158 PER 839-0507-001.
 17. IF ITEM 12 REQUIRES REMOVAL, USE 200 DEGREES C MAX. HOT AIR
OR 200 DEGREES C MAX. IRON.
 18. REMOVE SOLDER MASK AND COPPER IN CROSSHATCHED AREAS INDICATED ON SHEET 5.
 19. TRIM LEADS OF ITEM 33 FLUSH TO .015 FROM BOARD.
 20. LAP SOLDER WHERE INDICATED BY #.
 21. LEADWORK SHALL CONFORM TO PROCESS REQUIREMENTS.
 22. USE ITEM 158 FOR JUMPER NUMBER 1. TRIM AS REQUIRED.
 23. BOND ITEM 169 TO ITEM 166 USING ITEM 158 PER 839-0507-001.
 24. LEADS OF ITEMS 12 AND 156 MAY NOT MEET MINIMUM 25% SOLDER FILLET
REQUIREMENT.
 25. SOLDER FILLET NOT REQUIRED UNDER HEEL OF LEAD INDICATED FOR ITEM 2.

SCHMATIC AND FAB BOARD APPLICABILITY REF. TABLE

SCHMATIC	ALT LTR	FAB BOARD	ALT LTR	CKT CARD ASSY	ALT LTR
828-8773-002		A 826-0007-904		- 828-3373-002	-
828-8773-002	A	826-0007-904		- 828-3373-002	A
828-8773-002	B	826-0007-904		- 828-3373-002	B
828-8773-002	B	826-0007-904		- 828-3373-002	C

LTN	DESCRIPTION	DATE	BY
A	RL4739	05/08/2001	HS
B	RW9303	07/10/2001	N.S.
C	RW535	08/29/2001	C.F.

QTY	ITEM NO.	DESCRIPTION	DATE	BY		
2	94 833-6526-340	RESISTOR, 22.1	11	16 705-2438-050	RESISTOR, 1 k	R101,245-250,310,311
2	93 833-6083-120	RESISTOR, 0.05		R135,136		R37,427
1	92 833-4004-990	RESISTOR, 100	2	45 705-2437-980	RESISTOR, 825	R116,318
1	91 833-4004-980	RESISTOR, 121	7	44 705-2437-940	RESISTOR, 68J	R111,403,405,407,409
1	90 833-4004-940	RESISTOR, 9.09		R131		413,424
1	89 833-4004-690	RESISTOR, 2.74		R132		R213
1	88 833-4004-230	RESISTOR, 0.287	2	42 705-2437-660	RESISTOR, 200	R312,423
1	87 833-4004-010	RESISTOR, 0.1	12	41 705-2437-480	RESISTOR, 100	R115,120,125,126,216
1	86 833-1004-080	RESISTOR, 20 k		RF101		234-236,418,420
REF	85 828-8773-002	SCHEMATIC	1	40 705-2437-300	RESISTOR, 51.1	R323
1	84 714-1687-090	THERMISTOR, 10 k	3	39 705-2437-280	RESISTOR, 47.5	R119,129,322
1	82 705-3517-570	RESISTOR, 2.2 k	1	38 705-2437-250	RESISTOR, 39.2	R321
1	80 705-3205-160	RESISTOR, 36.5 k	2	37 705-2437-230	RESISTOR, 33.2	R325,327
1	79 705-3205-110	RESISTOR, 27.4 k	1	36 705-2437-110	RESISTOR, 16.2	R320
2	78 705-3205-020	RESISTOR, 18.2 k	4	35 705-2437-050	RESISTOR, 10	R130,315,330,331
2	77 705-3204-650	RESISTOR, 3.82 k	1	34 705-2437-010	RESISTOR, 0	RF35
1	76 705-3204-560	RESISTOR, 2.74 k		RF30		J2
4	75 705-3204-480	RESISTOR, 1.82 k	1	32 353-8135-040	DIODE, 1N4001	CR203
2	74 705-3204-140	RESISTOR, 392	1	31 353-8135-030	DIODE, 1N4001	CR102
2	73 705-2439-980	RESISTOR, 150	1	30 353-8135-250	DIODE, 5M1270-079	CR301
1	72 705-2439-740	RESISTOR, 37.4	3	29 352-9114-010	TRANSISTOR, 2N907	C109,205,206
1	71 705-2439-660	RESISTOR, 27.4	7	28 352-9113-010	TRANSISTOR, 2222A	O102,201-203,206,209
1	70 705-2439-590	RESISTOR, 22.1		R326		408
1	69 705-2439-380	RESISTOR, 1 M	1	27 352-1302-380	TRANSISTOR, UF4033T	U307
1	68 705-2439-190	RESISTOR, 332 k	1	26 352-1302-370	TRANSISTOR, NZT9588	O101
1	67 705-2439-110	RESISTOR, 200 k	1	24 352-1302-070	TRANSISTOR, MFT3906141	U404
5	66 705-2439-050	RESISTOR, 150 k	1	23 351-9605-350	IC, LM6511LM	U102
10	65 705-2438-950	RESISTOR, 100 k	1	22 351-9605-090	IC, LM2937IMP-3.3	U206
				225,226,233,417,426		U103
				R121		U101
				RF12,415		U203,204
				R301,333,424		U202
				R332		U201
				RF31		U301
				R114		U205,401
				RF09,109,205,229,230		TF101-106,401
				232		FL401
				13 293-1517-020	FILTER, BANDPASS,50H	
				12 289-4451-010	L700 Mhz	17,24,25
				11 280-2745-040	LABEL,ESD	X301
				10 240-2955-030	COIL, 470	L104
				9 240-2947-010	FERRITE, CHIP	ZP101-104
				8 240-2915-190	COIL, 22 nH	L303,304
				7 240-2915-120	COIL, 10 nH	L302
				6 240-0123-130	COIL, 82 nH	L401
				5 184-0401-170	CAPACITOR, 100	C107
				4 183-1543-020	CAPACITOR, 47	C113,118
				3 183-1543-010	CAPACITOR, 68	C117
				2 183-1504-430	CAPACITOR, 120	C120
				1 826-0007-984	PHB	

PARTS LIST CONTINUED ON PAGE 2

QTY	ITEM NO.	DESCRIPTION	DATE	BY
1	115 844-0068-010	IC, HSMS-2805		U405
3	114 844-0022-010	DIODE, HSMS-2800		CR204,401,402
2	113 843-9128-010	TRANSISTOR, MMT5550		O105,106
2	112 843-7043-040	TRANSISTOR, TRF5045		O107,108
6	111 843-1002-020	TRANSISTOR, BF992		O401-406
1	110 835-0358-040	IC, LTI1751S8-5		U402
1	109 835-0355-050	IC, L129		U306
2	108 835-0355-030	IC, LTI1291S8		U305,403
1	107 835-0233-100	IC, UPC2711T8		U303
1	106 835-0233-080	IC, UPC2708T8		U304
1	105 835-0041-010	IC, 833		U302
1	104 834-5086-410	CAPACITOR, 0.0022		C309
1	103 834-5005-990	CAPACITOR, 1		C109
1	102 834-2069-200	CAPACITOR, 22		C126
4	101 834-2008-200	CAPACITOR, 10		C431,433,447,449
5	100 834-2008-190	CAPACITOR, 10		C223,335,336,356,358
2	99 834-2008-140	CAPACITOR, 4.7		C116,211
1	98 834-2008-100	CAPACITOR, 2.2		C468
4	97 834-2008-070	CAPACITOR, 1		C214,302,305,363
2	96 833-6526-660	RESISTOR, 47.5		R127,128
2	95 833-6526-680	RESISTOR, 45.3	16	R123,137

QTY	ITEM NO.	DESCRIPTION	DATE	BY

QTY	ITEM NO.	DESCRIPTION	DATE	BY

QTY	ITEM NO.	DESCRIPTION	DATE	BY

REDC

ROCKWELL COLLINS, INC 400 COLLINS ROAD NE, CEDAR RAPIDS, IOWA 52408			
PREP BY: LUYE REV: 15-2001	CIRCUIT CARD ASSEMBLY, MODULATOR/IF/SYNTH		
CHK: J. LUTZ			
DATE: C. FOY			
TITLE: D 4V792	QWK NO: 828-3373-002	REV: C	SHEET: 1 OF 3

ROCKWELL PROPRIETARY INFORMATION.

DIGITAL DATA ONLY, NO MASTER TRACING.

APP: [] REL: [] CR: [] H/L

1	160	853-4137-002	MOD/IF/SYNTH SHIELD		
2	159	860-0507-050	CONTRACT,ELEC		Y
AR	158	838-0002-010	ADHESIVE,UNISST	16,23	
21	157	859-5543-010	CONTRACT,ELEC	15	X
4	156	933-0313-010	CAPACITOR, 3.3	16,24	C121,122,124,125
1	155	249-0006-050	CAPACITOR, 6.5-25 pF		C401
1	154	914-0669-330	CAPACITOR, 5.6 pF		C349
1	153	914-0669-250	CAPACITOR, 3 pF		C341
1	152	914-0669-220	CAPACITOR, 2.2 pF		C343
2	151	914-0669-180	CAPACITOR, 1.8 pF		C344,345
1	150	914-0669-060	CAPACITOR, 0.6 pF		C342
1	149	913-3669-310	CAPACITOR, 0.0033		C119
1	147	913-0866-430	CAPACITOR, .0033		C123
1	146	913-0865-720	CAPACITOR, 30 pF		C409
3	145	913-0865-680	CAPACITOR, 1000 pF		C306,307,333
8	144	913-0865-620	CAPACITOR, 0.1		C210,213,216,218,219 222,448,465
30	143	913-0865-500	CAPACITOR, 0.01		C224,308,311-313,402 404,405,407,410,412, 413,415-417,419-421, 423,424,432-435,438, 441,442,444,445,453
1	142	913-0865-480	CAPACITOR, 6800 pF		C115
1	141	913-0865-420	CAPACITOR, 2200 pF		C114
1	140	913-0865-400	CAPACITOR, 1500 pF		C112
15	139	913-0865-330	CAPACITOR, 1000 pF		C430,436,450,454-464 468
7	138	913-0865-340	CAPACITOR, 470 pF		C403,411,414,418,425 451,452
1	137	913-0865-270	CAPACITOR, 120 pF		C427
6	136	913-0865-260	CAPACITOR, 100 pF		C346-348,352,353,428
1	135	913-0865-230	CAPACITOR, 56 pF		C426
20	134	913-0865-190	CAPACITOR, 27 pF		C101-105,201-209,212 220,221,359,360,362
5	133	913-0865-180	CAPACITOR, 22 pF		C303,340,350,351,354
2	132	913-0865-140	CAPACITOR, 10 pF		C400,422
1	131	913-0865-100	CAPACITOR, 4.7 pF		C408
1	130	913-0863-340	CAPACITOR, 22000 pF		C110
7	129	913-0863-050	CAPACITOR, 0.1		C106,108,111,301,304 355,357
1	128	859-4830-080	CONN,ELEC		J1
12	127	852-1011-330	FERRITE, CHIP		ZF401-412
2	126	849-0028-010	COIL, 0.1		L301,305
7	125	849-0025-180	COIL, 2.7		L416,417,419-423
9	120	849-0025-130	COIL, 1		L469,404,406,409-414
2	119	849-0025-100	COIL, 0.56		L408,415
1	117	849-0025-070	COIL, 0.33		L405
8	116	849-0025-010	COIL, 0.1		L101-103,201,204-206 402
4	169	795-2437-860	RESISTOR, 475	R406,408,410,429	
1	168	849-0025-030	COIL, 0.15	L407	
1	167	913-0865-860	CAPACITOR, 43 pF	C406	
1	166	628-7676-013	INSULATOR	23	
0.01	165	430-1002-000	WIRE, FLAT(FT)	22	
1	164	833-6726-010	RESISTOR, 1 k	23	R224
3	163	310-0275-000	WASHER, LOCK		
3	162	310-0740-080	WASHER, FLAT		
3	161	343-0124-000	SCREW, .086-56x.25		

QTY	ITEM	PART OR IDENT NO.	NOMENCLATURE OR DESCRIPTION	NOTES	REF DESIGNATORS
PARTS LIST (US CUSTOMARY MEASUREMENTS ONLY)					

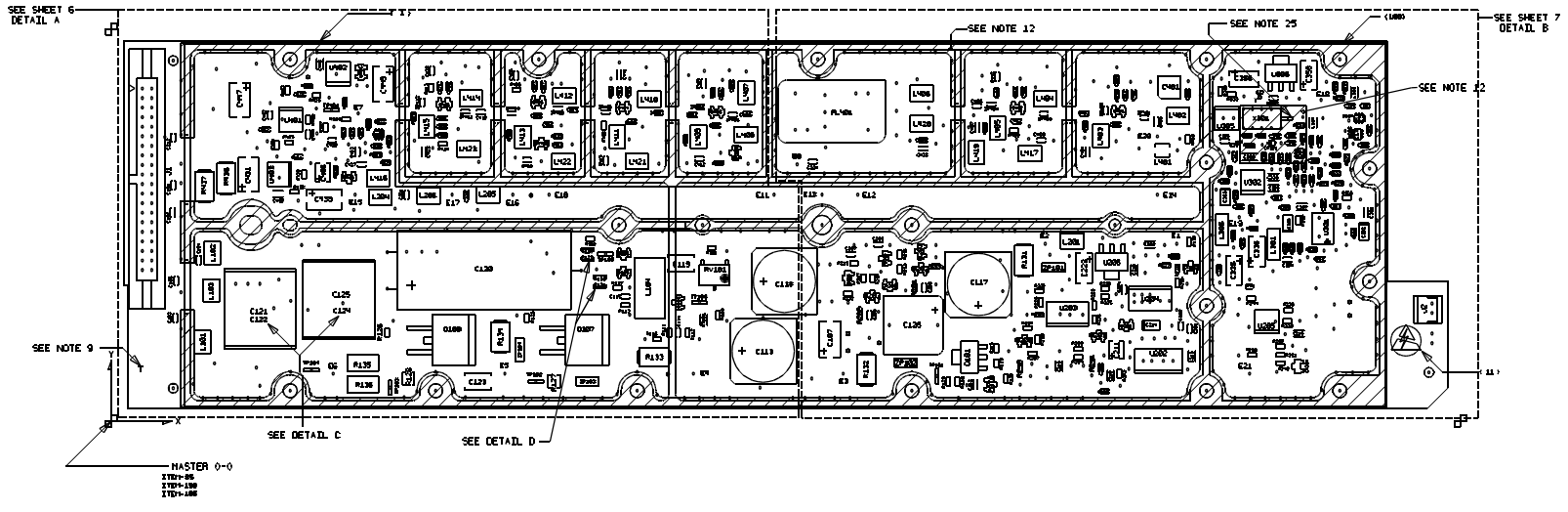
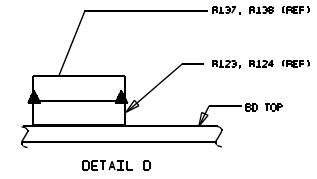
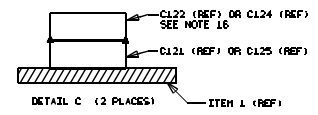
QTY	ITEM	PART OR IDENT NO.	NOMENCLATURE OR DESCRIPTION	NOTES	REF DESIGNATORS
PARTS LIST (US CUSTOMARY MEASUREMENTS ONLY)					

ROCKWELL COLLINS, INC
400 COLLINS ROAD NE, CEDAR RAPIDS IOWA, 52408

PREP. LOVE	D 4V792	DWG NO. 828-3373-002	REV. C
CHK. J. LUTZ	SCALE NONE	SHEET 2	

ROCKWELL PROPRIETARY INFORMATION.

DIGITAL DATA ONLY, NO PASTER TRACKING.



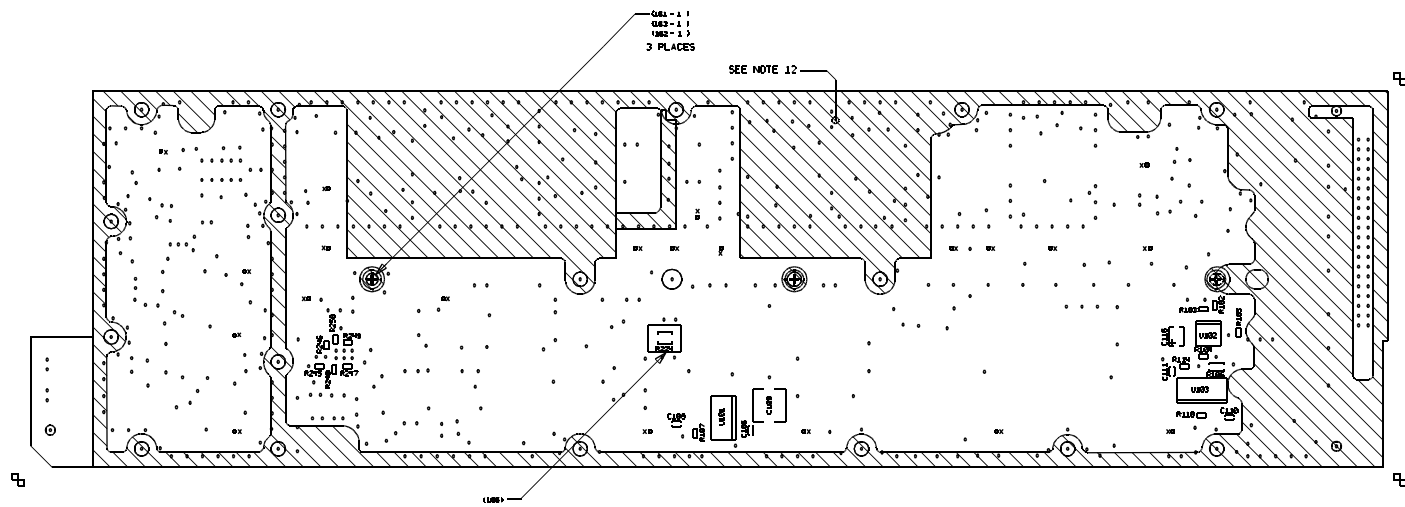
ROCKWELL COLLINS, INC

1400 COLLINS ROAD NE, CEDAR RAPIDS IOWA, 52498

PREP P. LOVE 12-SEP-2001	DWG NO. 828-3373-002	REV LTH C
CHK J. LUTZ	SCALE NONE	SHEET 3

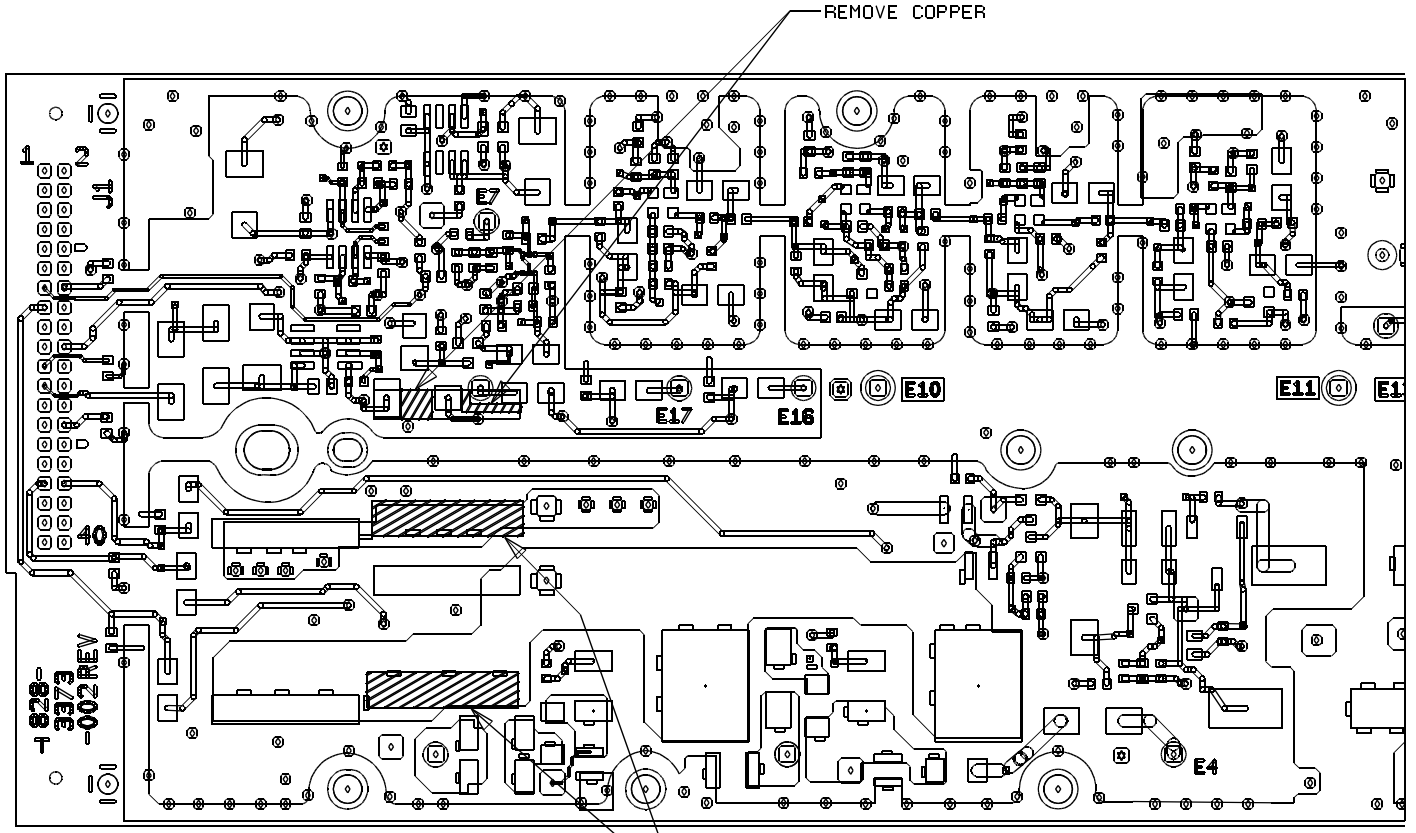
ROCKWELL PROPRIETARY INFORMATION.

DIGITAL DATA ONLY. NO PAPER TRACING.



COMPONENTS BOTTOM

ROCKWELL PROPRIETARY INFORMATION.		ROCKWELL COLLINS, INC 4400 COLLINS ROAD NE, CEDAR RAPIDS IOWA, 52498	
PREP P. LOVE 12-Sep-2001	DRG NO. D 4V792	828-3373-002	REV LTH C
CHK J. LUTZ	SCALE NONE	SHEET 4	
DIGITAL DATA ONLY, NO PAPER TRACING.			



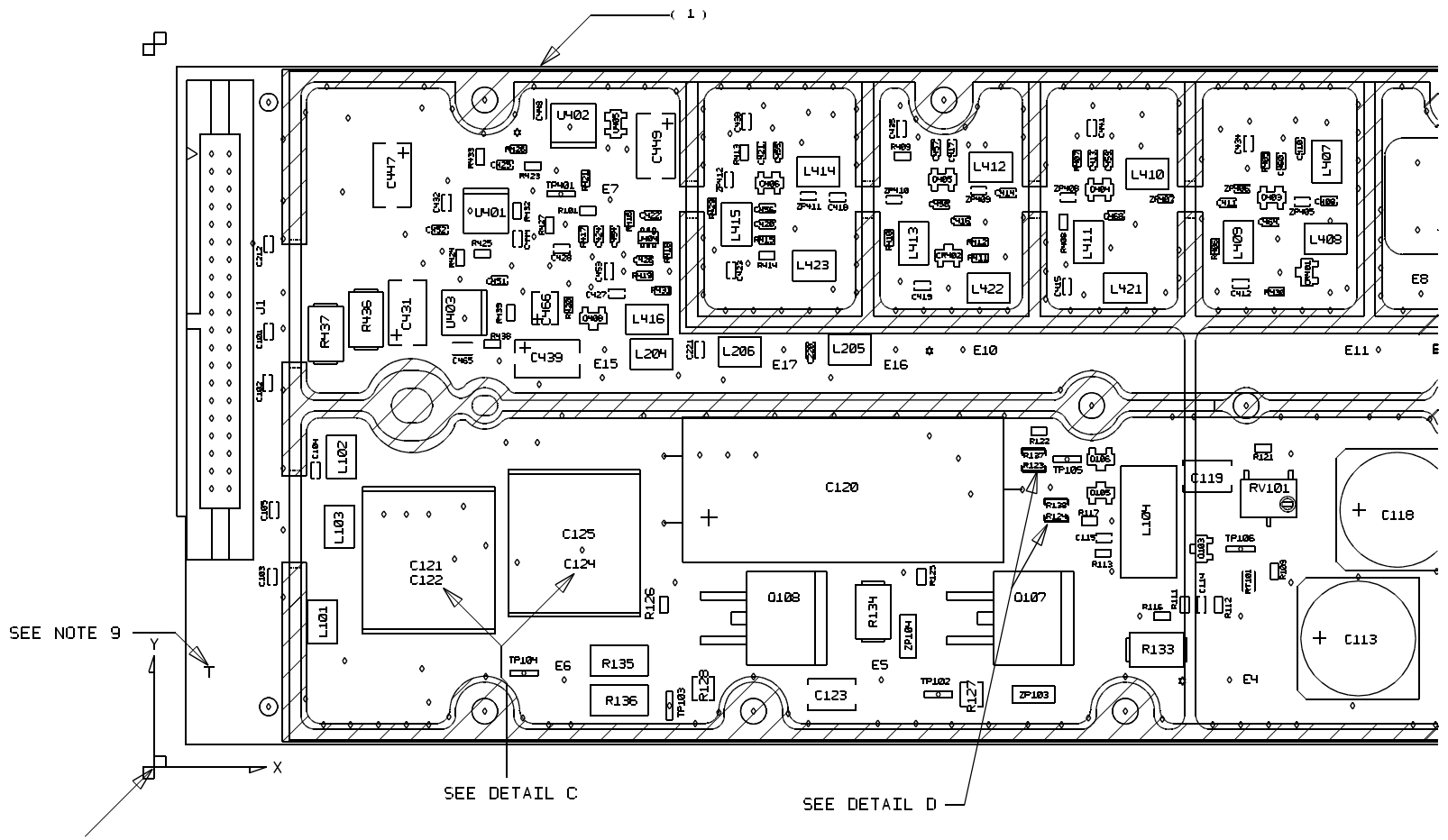
828-3373-002 REV 4

REMOVE COPPER

REMOVE SOLDER MASK

SOLDERMASK AND COPPER REMOVAL TOP

ROCKWELL COLLINS, INC			
1400 COLLINS ROAD NE, CEDAR RAPIDS IOWA, 52498			
PREP	P. LOVE 12-Sep-2001	DWG NO.	REV
CHK	J. LUTZ	D 4V792	828-3373-002 LTR C
ROCKWELL PROPRIETARY INFORMATION.		SCALE	SHEET
		NONE	5
DIGITAL DATA ONLY, NO PAPER TRACING.			



DETAIL A

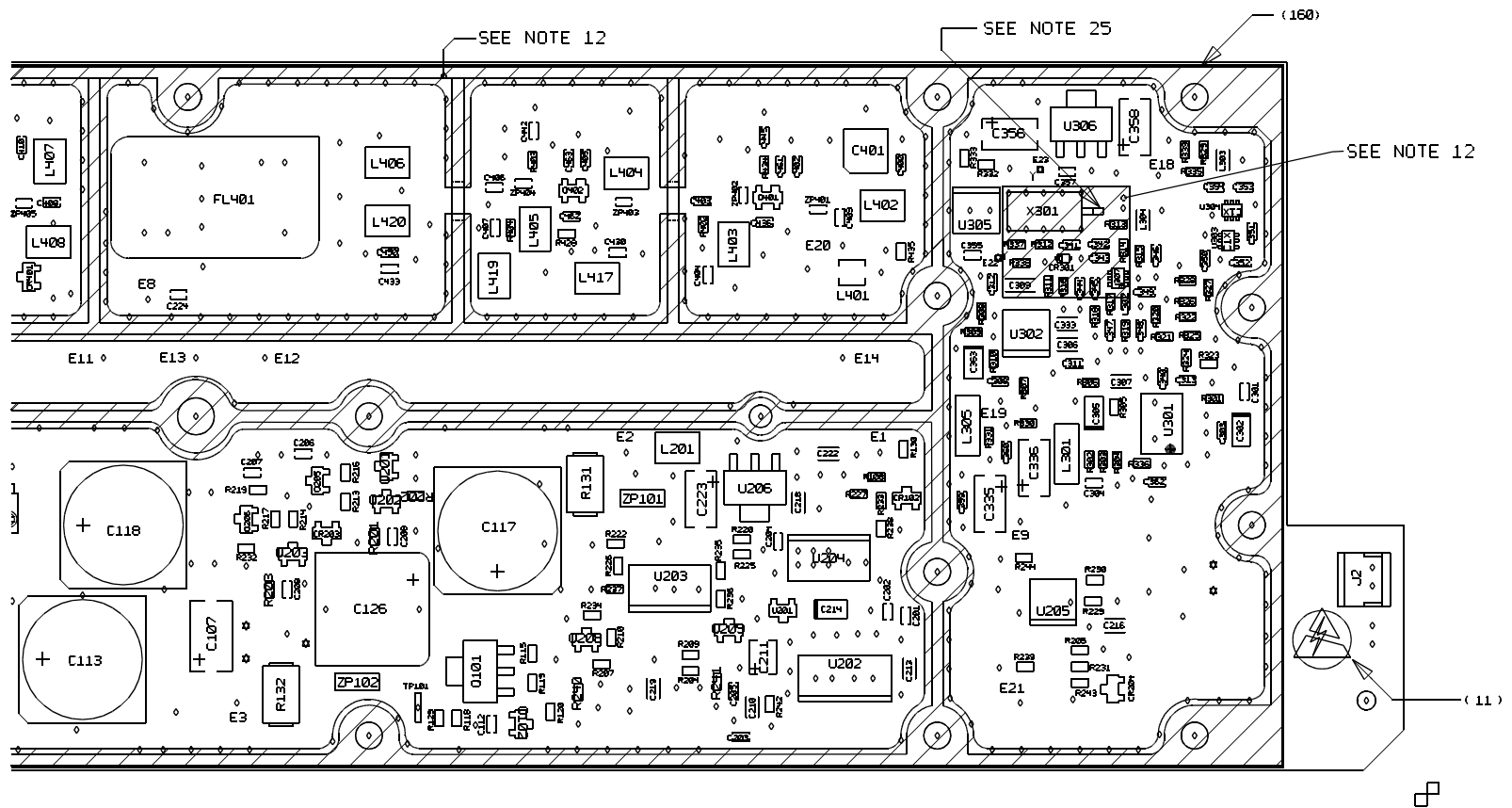
ROCKWELL COLLINS, INC

1400 COLLINS ROAD NE, CEDAR RAPIDS IOWA, 52498

PREP P. LOVE	DRG NO.	REV
12-SEP-2001	D 4V792	828-3373-002
		LTR C

ROCKWELL PROPRIETARY INFORMATION.	CHK J. LUTZ	SCALE NONE	SHEET 6
-----------------------------------	-------------	------------	---------

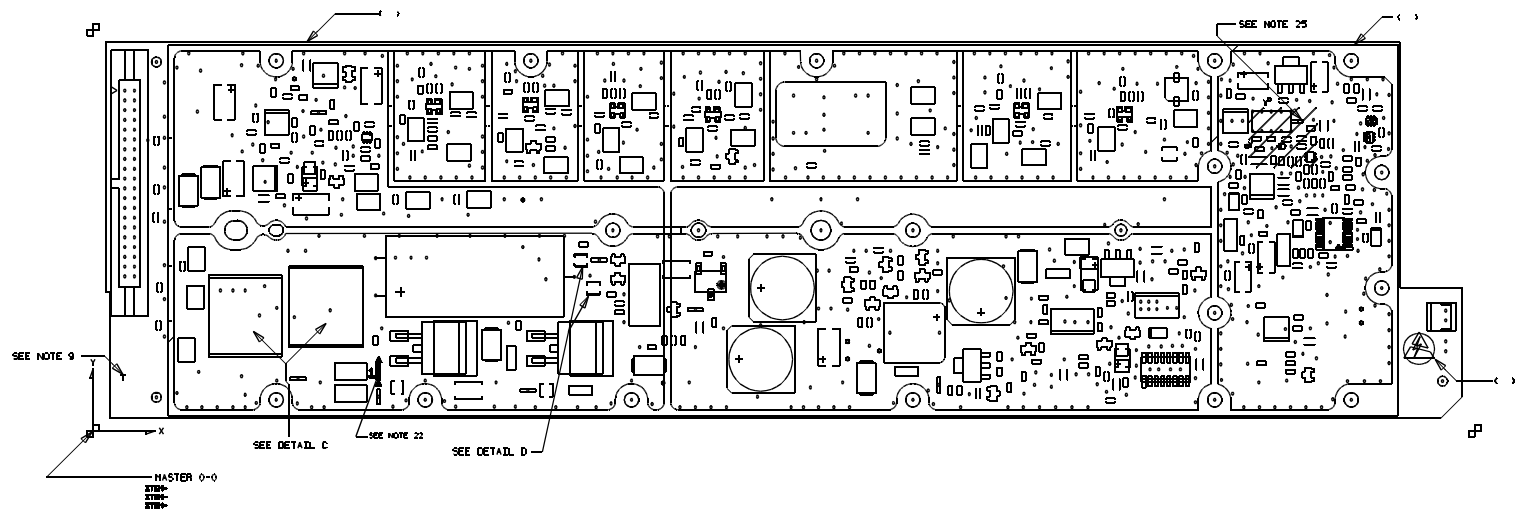
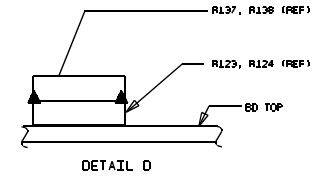
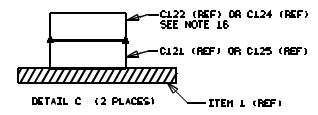
DIGITAL DATA ONLY, NO PAPER TRACING.



DETAIL B

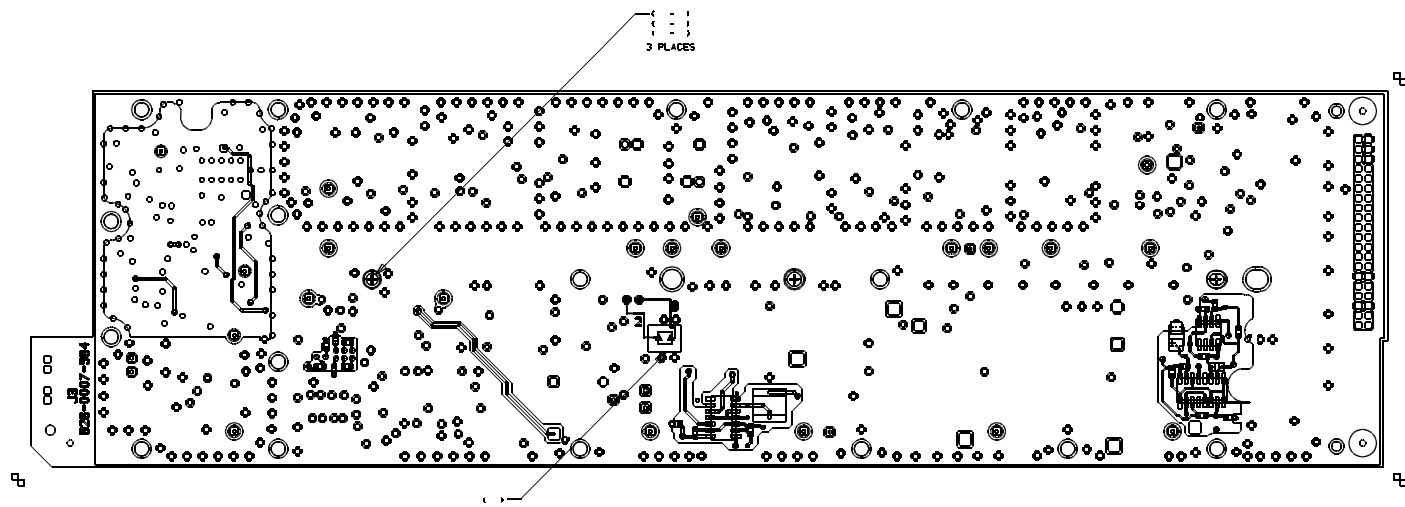
ROCKWELL COLLINS, INC 1400 COLLINS ROAD NE, CEDAR RAPIDS IOWA, 52498			
PREP P. LOVE 12-SEP-2001	DWG NO. D 4V792	REV LTH C	SHEET 7
ROCKWELL PROPRIETARY INFORMATION. CHK J. LUTZ	SCALE NONE	SHEET 7	

DIGITAL DATA ONLY, NO PAPER TRACKING.



JUMPER TOP

ROCKWELL COLLINS, INC 1400 COLLINS ROAD NE, CEDAR RAPIDS IOWA, 52498			
PREP P. LOVE 12-SEP-2001	D 4V792	DRG NO. 828-3373-002	REV LTH C
ROCKWELL PROPRIETARY INFORMATION. CH: J. LUTZ	SCALE NONE	SHEET 3	
DIGITAL DATA ONLY, NO PAPER TRACING.			



JUMPER BOTTOM

ROCKWELL COLLINS, INC			
1400 COLLINS ROAD NE, CEDAR RAPIDS IOWA, 52498			
PREP P. LOVE	SIZE D	DRG NO. 828-3373-002	REV LTR C
CHK J. LUTZ	SCALE NONE	SHEET 3	
DIGITAL DATA ONLY, NO PAPER TRACING.			