

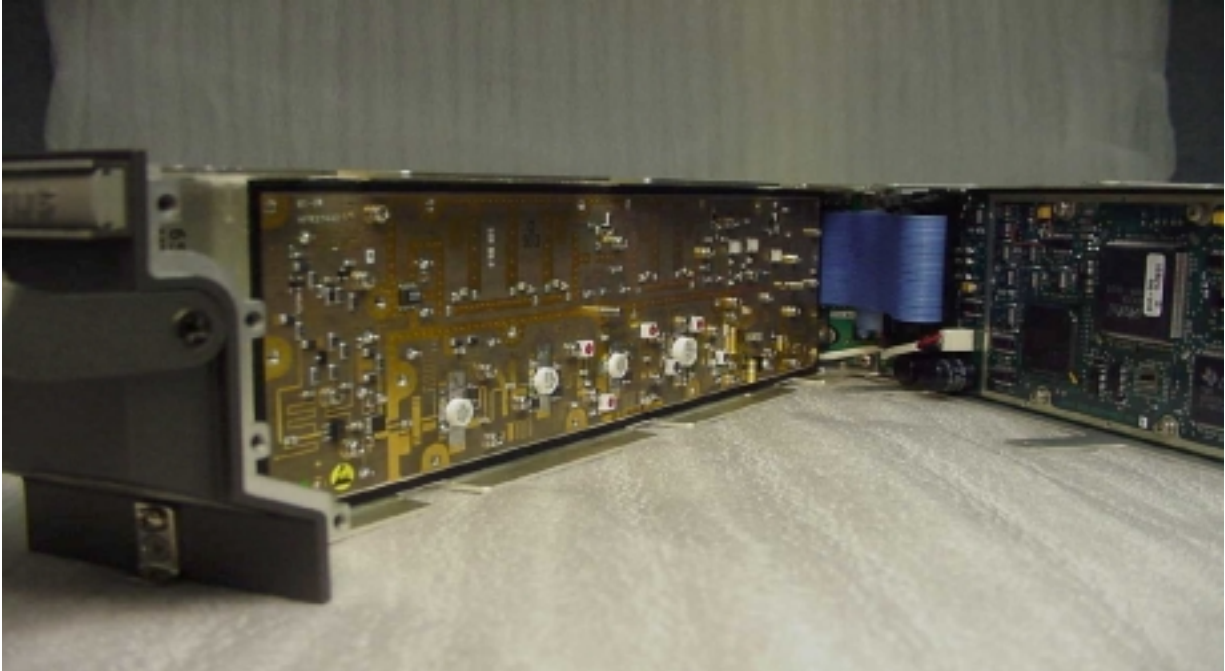
Exhibit I-Internal Pictures



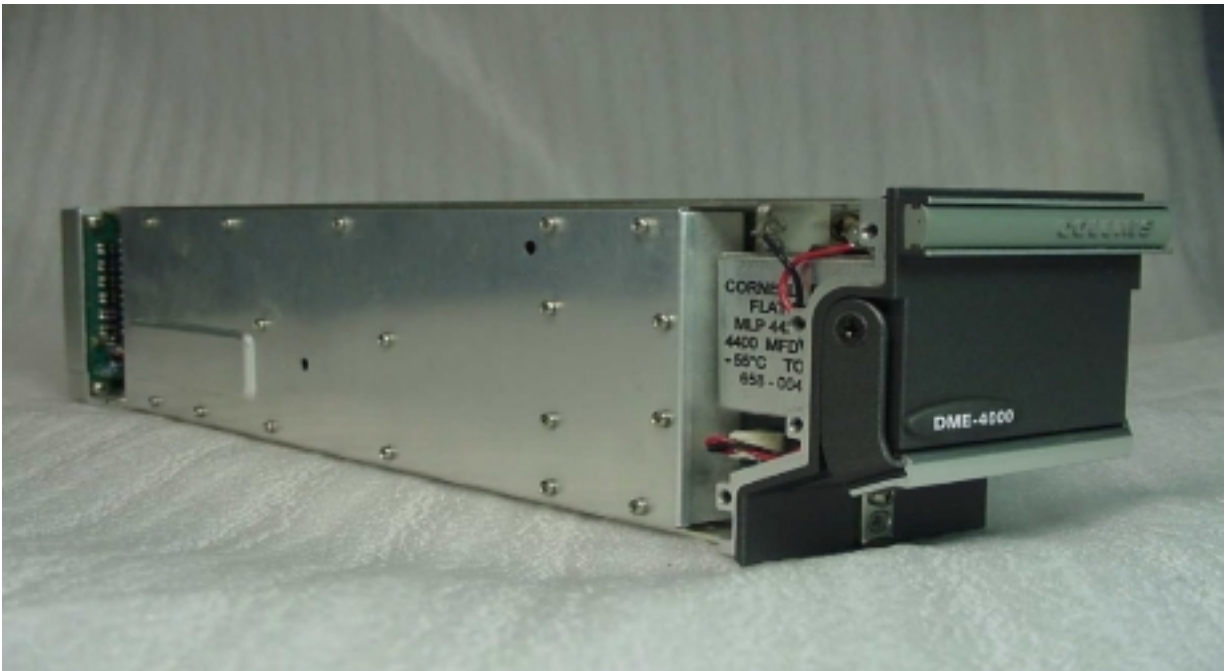
The DSP/Power Supply side of the DME-4000 with the unit cover removed.



The DSP/Power Supply side is opened and the Radio Frequency Transmitter and Receiver shield is exposed.



The Transmitter/Receiver shield is removed and the Transmitter/Receiver board is exposed.



The DME-4000 Modulator/IF/Synthesizer side of the unit with the unit cover removed and the Modulator/IF/Synthesizer cover exposed. Partial view of the storage capacitor behind the front panel.



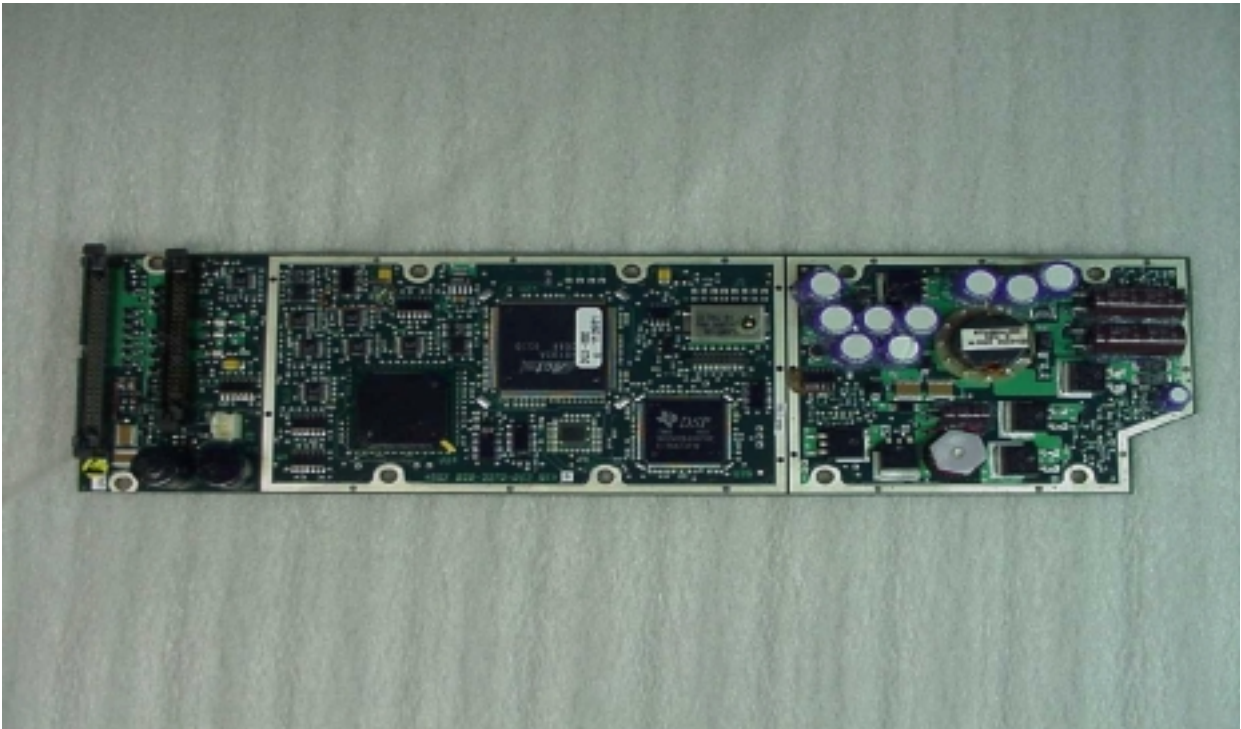
The DME4000 Modulator/IF/Synthesizer cover removed. The shield and the Modulator section of Modulator/IF/Synthesizer board are exposed. The IF and the Synthesizer section of the board are covered by the shield.



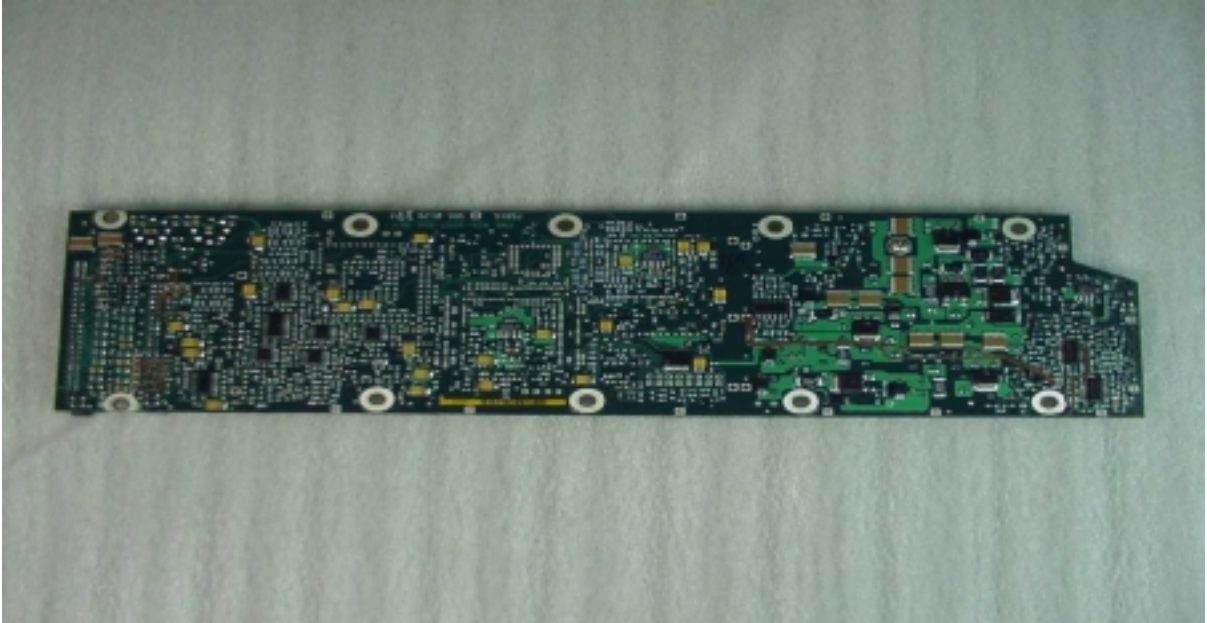
The DME4000 Modulator/IF/Synthesizer board with the shield removed.



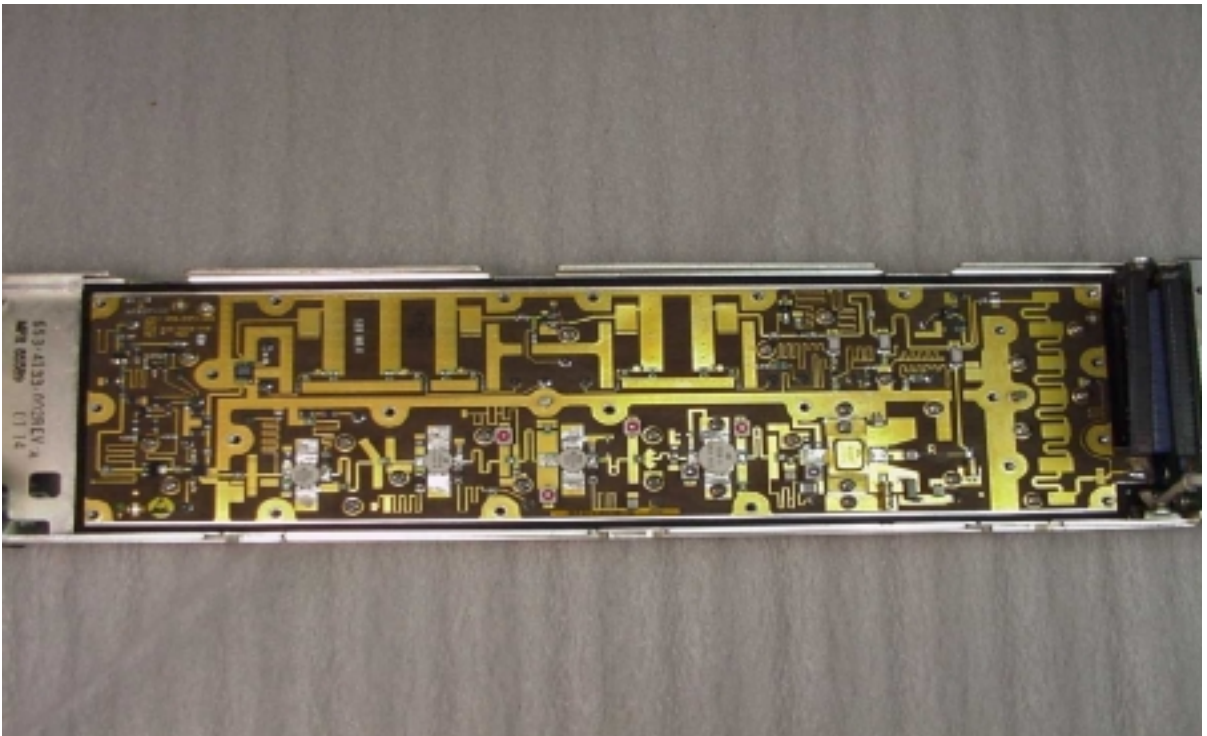
The chassis side of the Modulator/IF/Synthesizer, both the shield and the cover are removed.



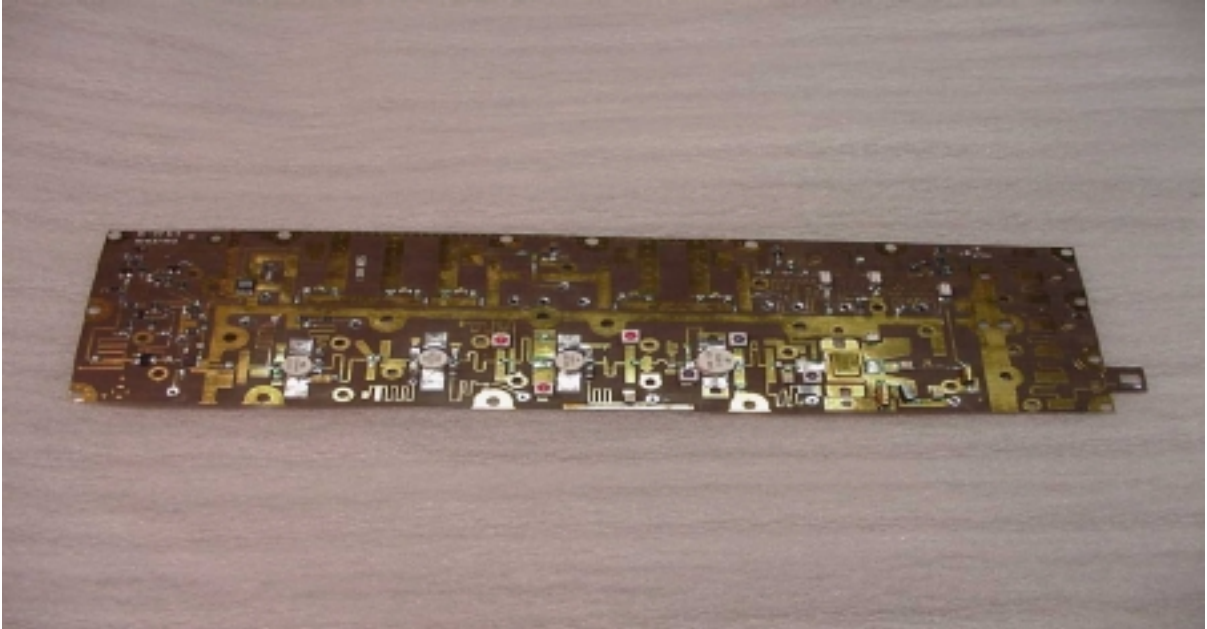
Top side view of the DSP/Power Supply board.



Bottom side view of the DSP/Power Supply board.



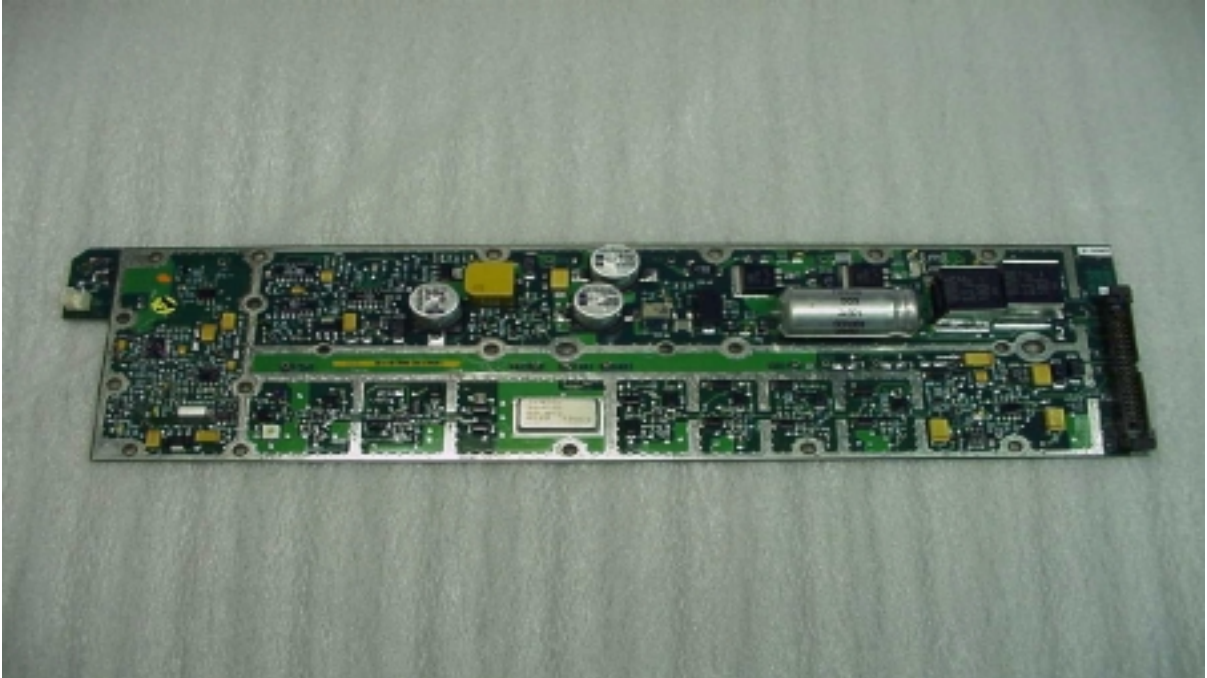
The top side view of the RF Transmitter/Receiver in the chassis.



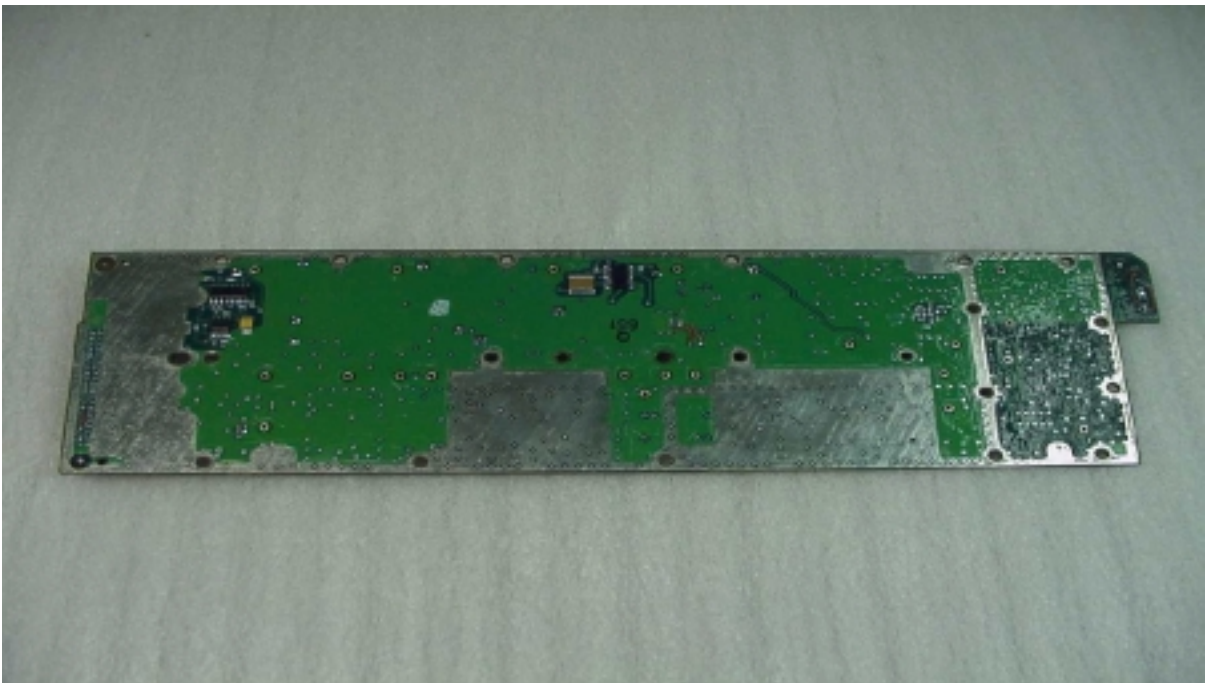
The top side view of the Transmitter/Receiver board



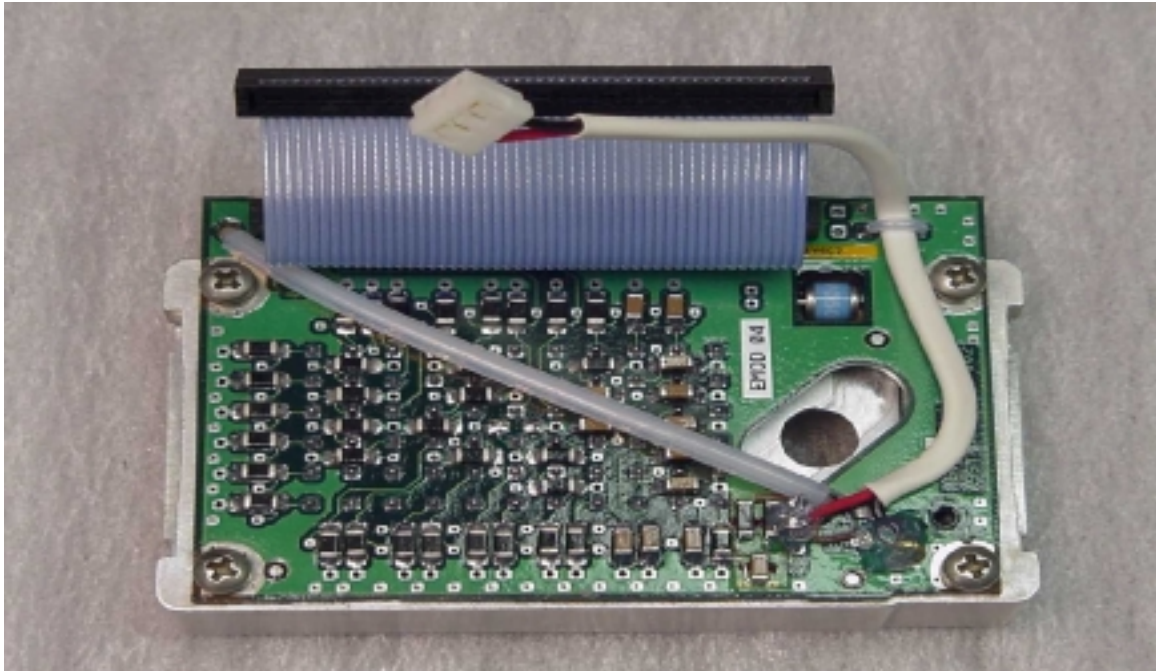
The bottom side of the RF Transmitter/Receiver board



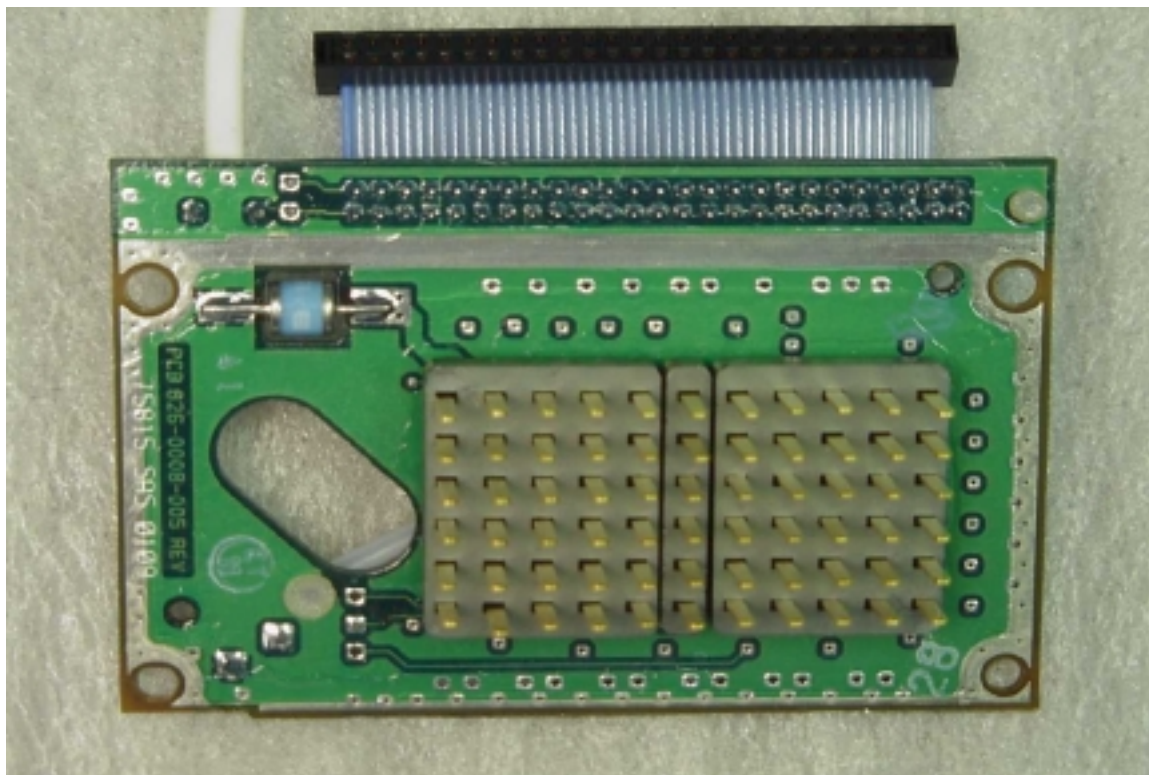
The top side of the Modulator/IF/Synthesizer board



The bottom side of the Modulator/IF/Synthesizer board



Top view of the rear interconnect



Bottom side view of the rear interconnect