

2011-06-16 22:18:26 CR5000 828-2046-003 H takleyma

NOTES:

- "T" DESIGNATES CIRCUIT CARD ASSEMBLY TOP SURFACE.
- REFERENCE DESIGNATORS USED IN LIEU OF ITEM NUMBERS.
- PARENTHETICAL INFORMATION IS FOR REFERENCE ONLY.
- BALLOON IDENTIFICATION DENOTES: ITEM NUMBER - QUANTITY.
- UNLESS OTHERWISE SPECIFIED, ASSEMBLY SHALL BE IN ACCORDANCE WITH ITEM 5. ADDITIONAL MODIFICATIONS SHALL BE IN ACCORDANCE WITH ITEM 26.
- Z MAX DIMENSIONS, EXCLUDING CONNECTORS, PIN FIELDS, AND MECHANICAL HARDWARE:
 Z TOP SHALL BE .605
 Z BOTTOM SHALL BE .186
 MAXIMUM LEAD PROTRUSION SHALL BE .090
- APPLY IDENTIFICATION MARKING IN APPROXIMATE LOCATION SHOWN, IN ACCORDANCE WITH ITEM 6, TYPE 2, CLASS II.
- CAUTION: THIS ASSEMBLY CONTAINS ELECTROSTATIC DISCHARGE SENSITIVE DEVICES, AND/OR ASSEMBLIES IDENTIFIED AS CLASS 1 IN ACCORDANCE WITH MIL-STD-1686. HANDLE IN ACCORDANCE WITH ITEM 4. ESD SYMBOL APPLIED BY PRINTED WIRING BOARD FABRICATION PROCESS.
- ITEM 7 MAY BE UTILIZED ON THIS ASSEMBLY.
- DIMENSIONING AND TOLERANCING SHALL BE INTERPRETED IN ACCORDANCE WITH ASME Y14.5M-1994. DIMENSIONS AND TOLERANCES ARE IN INCHES.
- TRIM LEADS OF ITEM 23 AS REQUIRED AND INSTALL AS SHOWN IN SECTION A-A.
- INSTALL ITEM 20 (W1) INTO E1 AND E3. INSTALL ITEM 20 (W2) INTO E4 AND E5. ENSURE COMPLETE CONTACT AND SOLDER FILLET BETWEEN W1, W2 AND THE LEADS OF T1 ITEM 23 SEE VIEW B-B.
- APPLY A THIN FILM OF ITEM 8 TO BOTTOM OF ITEM 31 (ATTENUATORS AT1 AND AT2) AND BETWEEN ITEM 45 (HEATSINK PLATE) IN ACCORDANCE WITH ITEM 22.
- THIS CIRCUIT CARD ASSEMBLY WILL BE TESTED AT A HIGHER LEVEL.
- CUT TWO PIECES OF ITEM 10 TO 6.18 +/- .02 AND TWO PIECES TO 1.81 +/- .02. APPLY TO CLAD AREAS AS SHOWN ON SHEET COMPONENTS BOTTOM.
- CONFORMAL COAT ASSEMBLY USING ITEM 30 IN ACCORDANCE WITH ITEM 21. HATCHED AREAS INDICATED SHALL BE FREE OF CONFORMAL COATING, AND SHALL APPROXIMATE SOLDER MASK CLEARANCE ON FAB BOARD. THE FOLLOWING COMPONENTS SHALL ALSO BE FREE OF CONFORMAL COATING: ITEM 31, ITEM 18, ITEM 19, ITEM 42, ITEM 24, AND ITEM 23.
- LEADS OF ITEM 31 AND ITEM 24 SHALL BE COMPLETELY TINNED, TOP AND BOTTOM. THEIR ASSOCIATED PADS, ON THE PRINTED WIRING BOARD, SHALL BE TINNED PRIOR TO COMPONENT PLACEMENT.
- APPLY A THIN FILM OF ITEM 8 TO BOTTOM OF ITEM 24 (R11) AND BETWEEN ITEM 46 (HEATSINK PLATE) IN ACCORDANCE WITH ITEM 22.
- STRAIN RELIEVE INDICATED LEADS OF ITEM 23 USING ITEM 48 IN ACCORDANCE WITH ITEM 44.
- INSTALL ITEM 42 .020 +/- .010 OFF ITEM 1.
- INSTALL ITEM 11 TO DIMENSION SHOWN IN VIEW C-C. 192-1042-010 MAY BE USE TO ACHIEVE PROPER DIMENSION. LEAD PROTRUSION IS NOT REQUIRED FOR ITEM 11
- ABBREVIATIONS AND ACRONYMS NOT IN ACCORDANCE WITH ASME Y14.38:
 HIGH FREQUENCY SYSTEM (HFS)

REVISION HISTORY			
REV	DESCRIPTION	DATE	APPROVED
B	ECO-0327477	2011-06-16	K.H.

CAD MAINTAINED. CHANGES SHALL BE INCORPORATED BY THE DESIGN ACTIVITY

PARTS LIST CONTINUED ON THE FOLLOWING SHEET

QTY	ITEM NO	PART OR IDENTIFYING NO	NOMENCLATURE OR DESCRIPTION	DOCUMENT NO	CAGEC	NOTES	REF DESIGNATOR
2	33	844-0022-010	DIODE, MICROWAVE MIXER				CR1,2
6	32	834-5005-370	CAPACITOR, 0.1uF				C13-18
2	31	833-9017-030	RF/MICROWAVE ATTENUATOR			13, 16, 17	AT1,2
AR	30	821-0650-020	INSULATING COMPOUND, ACRYLIC			16	
3	29	705-3543-020	RESISTOR, 0.0 OHM				R1, 7, 12
2	28	705-3539-550	RESISTOR, 26.7 OHMS				R5, 6
1	27	705-3535-060	RESISTOR, 100K OHMS				R13
REF	26	523-0780737	RC MODIFICATION STD MANUAL			5	
2	25	705-2437-010	RESISTOR, 0 OHM				R2, 9
1	24	713-0122-020	RESISTOR, FIXED			16, 17, 18	R11
1	23	635-6153-001	TRANSFORMER, DIRECTIONAL COUPLER			11, 12, 16, 19	T1
REF	22	580-5643-002	PROCESS, HEATSINK COMPOUND			13, 18	
REF	21	580-5458-001	CONFORMAL COATING, ACRYLIC-BASED, APPLIC			16	
2	20	421-2020-000	WIRE, ELECTRICAL			12	W1, 2
1	19	357-8861-020	CONNECTOR, RF, PLUG			16	J3
1	18	357-0286-010	CONNECTOR, RADIO FREQUENCY			16	J2
2	17	333-0604-000	NUT, HEX - LOCKING, .086-56				
2	16	330-0810-060	SCREW, CAP, BUTTON HEAD - .086-56X.38L				
3	15	330-0803-080	SCREW, CAPTIVE ASSEMBLY				
4	14	313-0132-000	NUT, HEX, .112-40				
2	13	310-0740-080	WASHER, FLAT				
2	12	330-0803-070	SCREW, PAN, 0.086-56, .188				
1	11	261-0087-030	CONNECTOR, RF, SMB, JACK			21	J4
4	10	018-0347-030	SHIELDING GASKET, ELECTRONIC			15	
1	9	013-1455-050	SURGE PROTECTOR				GD10
AR	8	005-1234-060	LUBRICANTS			13, 18	
REF	7	580-6520-001	STANDARD ASSY PRACTICES			9	
REF	6	580-1497-001	PROCESS, MARKING IDENT			7	
REF	5	523-0778764	RC WORKMANSHIP STD MANUAL			5	
REF	4	489-0004-001	PROCEDURE, ESD			8	
AR	3	152-2533-000	SLEEVES, NON-HEAT SHRINK, TUBING				
REF	2	828-7046-003	SCHEMATIC DIAGRAM				
1	1	826-0004-860	PRINTED WIRING BOARD				

THE TECHNICAL DATA IN THIS DOCUMENT (OR FILE) IS CONTROLLED FOR EXPORT UNDER THE EXPORT ADMINISTRATION REGULATIONS (EAR), 15 CFR PARTS 730-774. VIOLATIONS OF THESE EXPORT LAWS MAY BE SUBJECT TO FINES AND PENALTIES UNDER THE EXPORT ADMINISTRATION ACT.

NOTICE: THE CONTENTS OF THIS DOCUMENT ARE PROPRIETARY TO ROCKWELL COLLINS, INC. AND SHALL NOT BE DISCLOSED, DISSEMINATED, COPIED, OR USED EXCEPT FOR PURPOSES EXPRESSLY AUTHORIZED IN WRITING BY ROCKWELL COLLINS, INC.

COPYRIGHT 2011 ROCKWELL COLLINS, INC. ALL RIGHTS RESERVED



CAUTION
 CONTAINS PARTS AND ASSEMBLIES SUSCEPTIBLE TO DAMAGE BY ELECTROSTATIC DISCHARGE (ESD)

PARTS LIST		CONTRACT NO

		PREP N.NGO 2011-06-16
		CHK T.KLEYMANN 2011-06-16
983-9399-030	HFS-2200	APVD K.HAMBY 2011-06-16
NEXT ASSY	USED ON	ALL SHEETS ARE THE SAME REVISION STATUS
APPLICATION		THIRD ANGLE PROJECTION

ROCKWELL COLLINS			
CIRCUIT CARD ASSEMBLY			
WATT METER			
SIZE	CAGEC	DWG NO	REV
D	OEFDO	828-2046-003	A
SCALE	NONE		SHEET 1 OF 4

2011-06-16 22:18:26 CR5000 828-2046-003 R tak|ejma

8 7 6 5 4 3 2 1

D

D

C

C

B

B

A

A

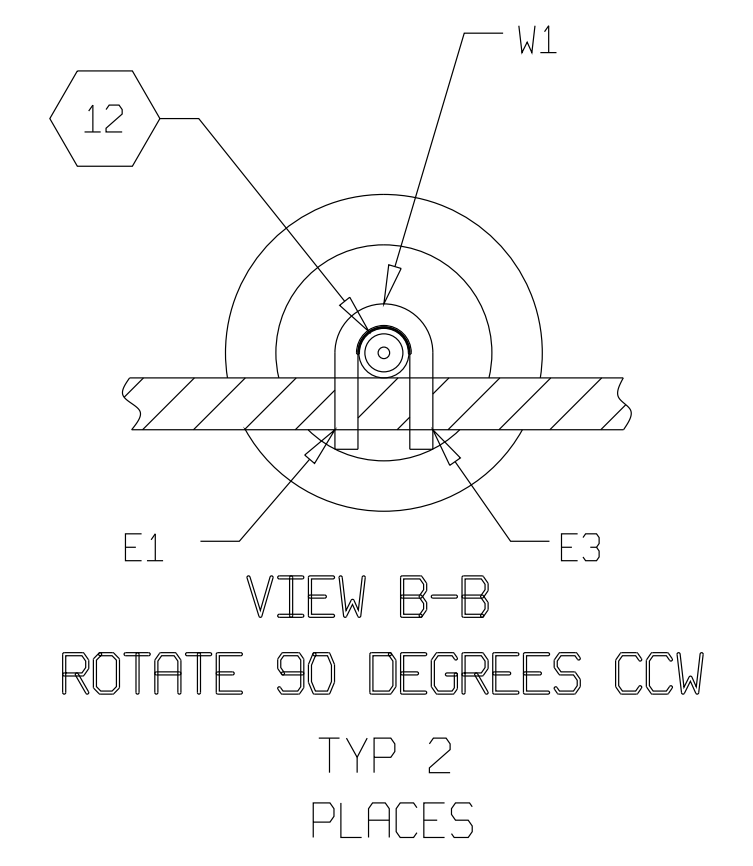
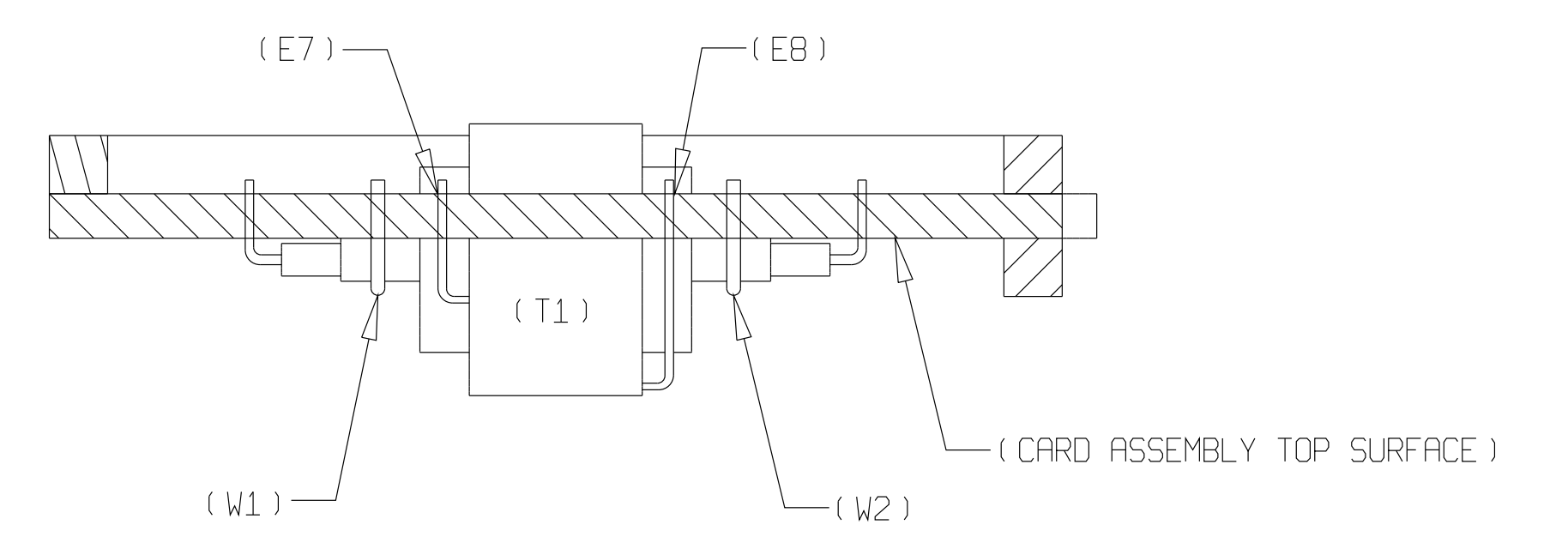
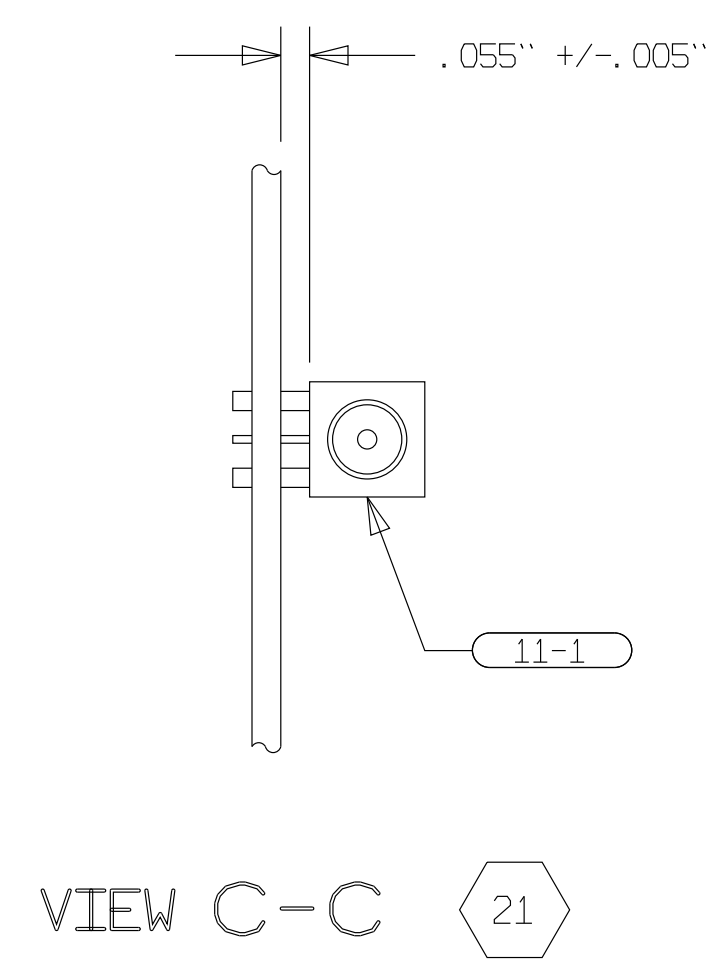
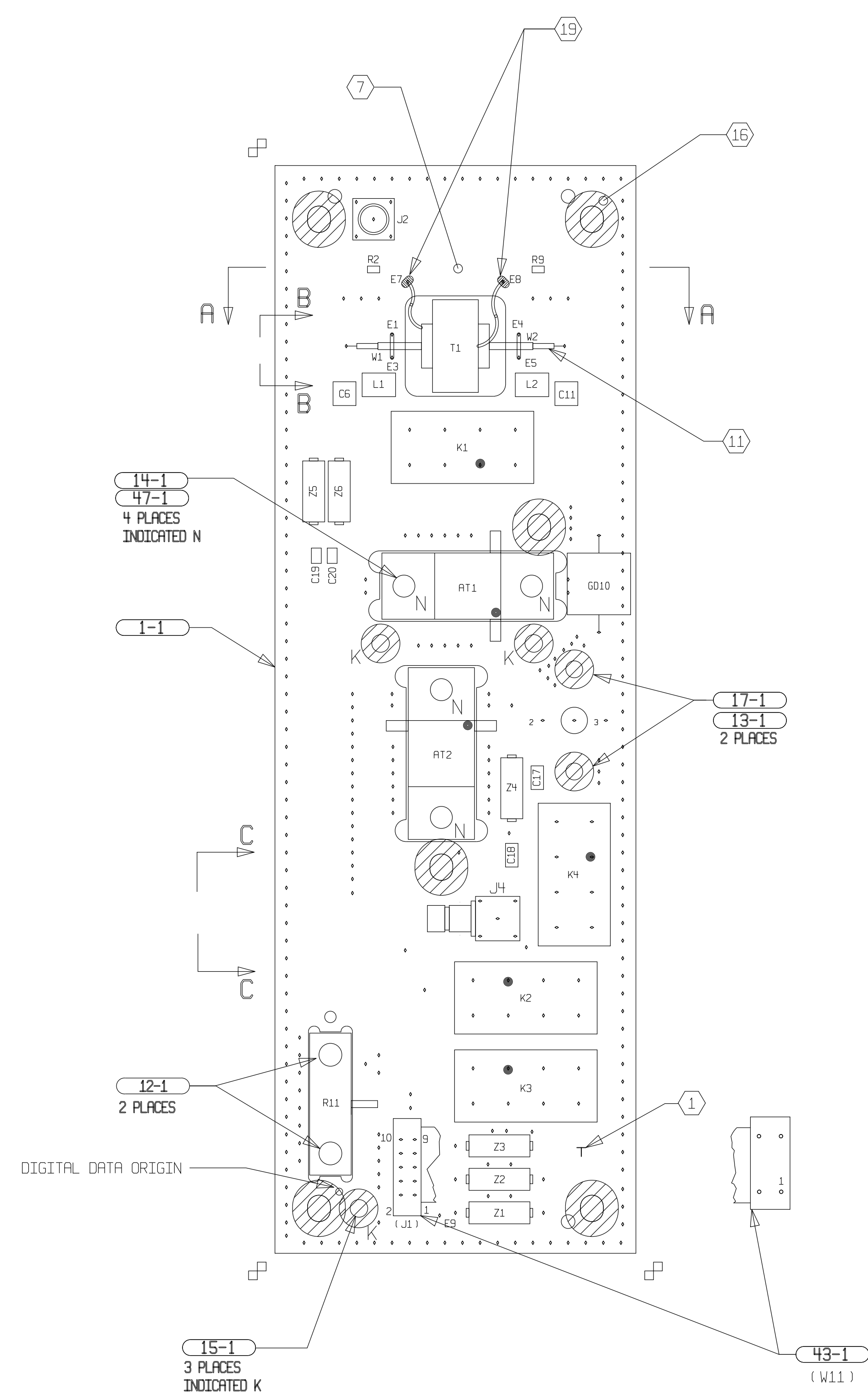
AR	48	005-3201-010	ADHESIVES, NON-MICROELECTRONIC			19	
	4	47 MS35338-135	WASHER, LOCK				
	1	46 983-9399-021				18	
	1	45 983-9399-015	HEATSINK PLATE			13	
REF	44	580-5205-010	ADHESIVE/SEALANT PROCEDURE			19	
	1	43 983-9395-011	RIBBON CABLE ASSEMBLY				
	4	42 974-1502-040	ELECTROMECHANICAL RELAY			16, 20	K1-4
	2	41 914-3503-670	CAPACITOR, 330pF				C6, 11
	2	40 914-0678-320	CAPACITOR, 6.2pF				C3, 9
	2	39 913-3667-150	CAPACITOR, 100pF				C19, 20
	2	38 913-3072-040	CAPACITOR, 0.1uF				C1, 2
	4	37 913-0865-220	CAPACITOR, 47pF				C5, 7, 8, 12
	6	36 852-3002-020	SURFACE MOUNT FERRITE BEAD				Z1-6
	2	35 849-0025-490	INDUCTOR, 1mH				L1, 2
	2	34 844-0121-010	DIODE, SIGNAL				CR3, 4
QTY	ITEM NO	PART OR IDENTIFYING NO	NOMENCLATURE OR DESCRIPTION	DOCUMENT NO	CAGEC	NOTES	REF DESIGNATOR
PARTS LIST							

ROCKWELL COLLINS, INC.--PROPRIETARY INFORMATION
 COPYRIGHT 2011 ROCKWELL COLLINS, INC. ALL RIGHTS RESERVED

SIZE D	CAGEC OEFDO	DWG NO 828-2046-003	REV A
SCALE NONE	SHEET 2		

8 7 6 5 4 3 2 1

2011-06-16 22:18:47 CR5000 828-2046-003 R tak legma



COMPONENTS TOP

ROCKWELL COLLINS, INC.--PROPRIETARY INFORMATION
COPYRIGHT 2011 ROCKWELL COLLINS, INC. ALL RIGHTS RESERVED

SIZE D	CAGEC OEFD0	DWG NO 828-2046-003	REV A
SCALE NONE	SHEET 3		

2011-06-16 22:18:47 CR5000 828-2046-003 R taklegma

8 7 6 5 4 3 2 1

C

B

A

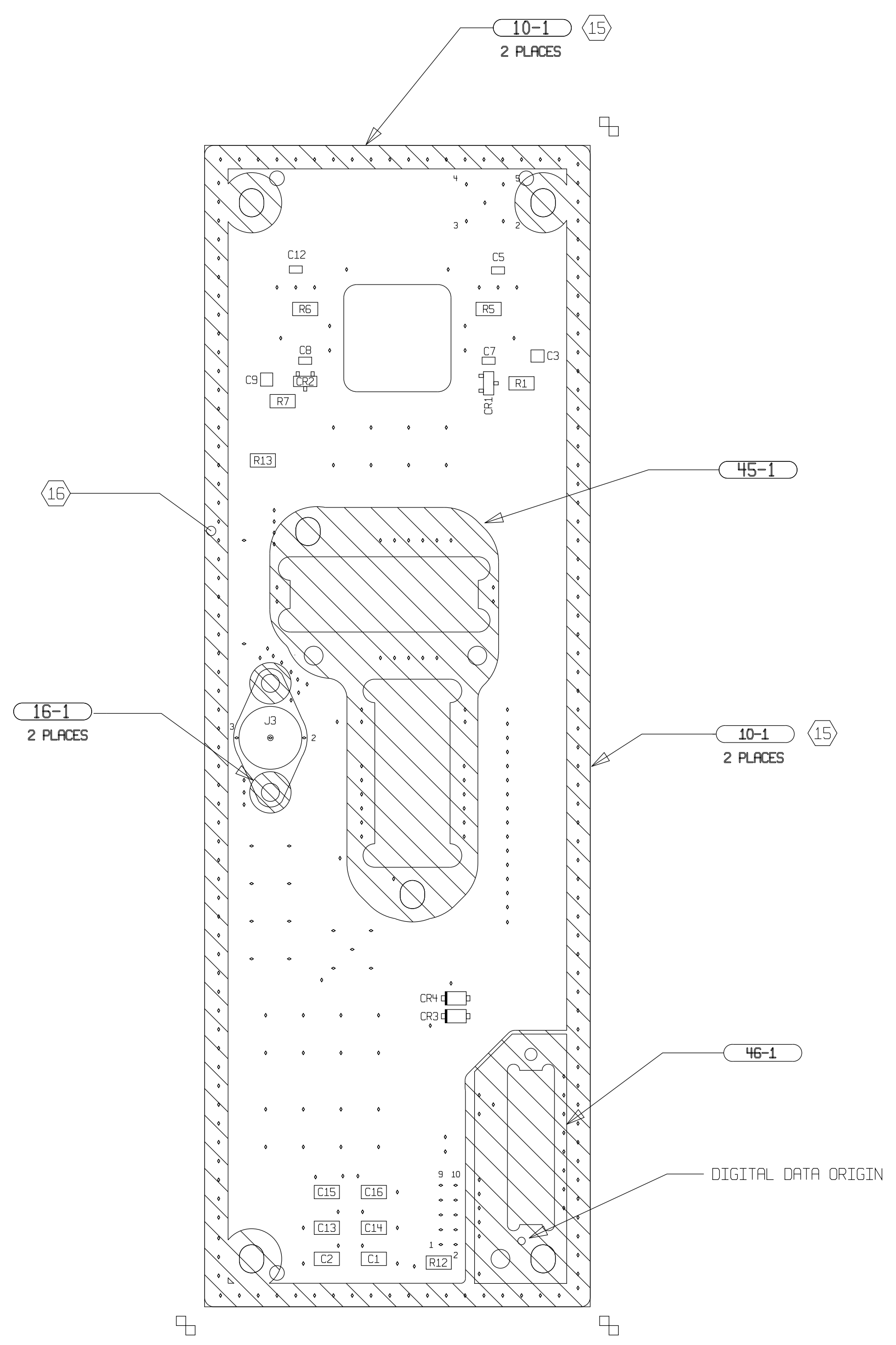
A

D

C

B

A



ROCKWELL COLLINS, INC.--PROPRIETARY INFORMATION
 COPYRIGHT 2011 ROCKWELL COLLINS, INC. ALL RIGHTS RESERVED

COMPONENTS BOTTOM

SIZE D	CAGEC OEFDO	DWG NO 828-2046-003	REV A
SCALE NONE	SHEET 4		

8 7 6 5 4 3 2 1