

2011-06-08 06:41:16 CR5000 828-2036-003 R D Jmanson

- NOTES:
- "T" DESIGNATES CIRCUIT CARD ASSEMBLY TOP SURFACE.
 - REFERENCE DESIGNATORS USED IN LIEU OF ITEM NUMBERS.
 - PARENTHETICAL INFORMATION IS FOR REFERENCE ONLY.
 - ITEM IDENTIFICATION BALLOONS DENOTE ITEM NUMBER OR ITEM NUMBER - QUANTITY.
 - UNLESS OTHERWISE SPECIFIED, ASSEMBLY SHALL BE IN ACCORDANCE WITH ITEM 4.
 - Z MAX DIMENSIONS, EXCLUDING CONNECTORS, PIN FIELDS, AND MECHANICAL HARDWARE:
 - Z TOP SHALL BE 1.100
 - Z BOTTOM SHALL BE .300
 - MAXIMUM LEAD PROTRUSION SHALL BE .090
 - APPLY IDENTIFICATION MARKING IN APPROXIMATE LOCATION SHOWN, IN ACCORDANCE WITH ITEM 5, TYPE 2, CLASS II.
 - CAUTION: THIS ASSEMBLY CONTAINS ELECTROSTATIC DISCHARGE SENSITIVE DEVICES, AND/OR ASSEMBLIES IDENTIFIED AS CLASS 1 IN ACCORDANCE WITH MIL-STD-1686. HANDLE IN ACCORDANCE WITH ITEM 3. ESD SYMBOL APPLIED BY PRINTED WIRING BOARD FABRICATION PROCESS.
 - CONFORMAL COAT ASSEMBLY USING ITEM 8 IN ACCORDANCE WITH ITEM 6.
 - A. HATCHED AREAS INDICATED SHALL BE FREE OF CONFORMAL COATING. HATCHED AREAS ARE APPROXIMATE AND ARE DEFINED BY SOLDER MASK OR REFERENCE DIMENSIONS.
 - B. HATCHED AREAS INDICATED WITHIN ITEM 150 SHALL BE FREE OF CONFORMAL COATING.
 - C. COMPONENTS AND THEIR ASSOCIATED PADS (WITHIN HATCHED AREAS) SHALL BE FREE OF CONFORMAL COATING.
 - ITEM 7 MAY BE UTILIZED ON THIS ASSEMBLY.
 - UNLESS OTHERWISE SPECIFIED, DIMENSIONS AND TOLERANCES ARE EXPRESSED IN INCHES AND SHALL BE INTERPRETED IN ACCORDANCE WITH ASME Y14.5M-1994.
 - THIS CIRCUIT CARD ASSEMBLY WILL BE TESTED AT A HIGHER LEVEL.
 - ABBREVIATIONS AND ACRONYMS NOT IN ACCORDANCE WITH ASME Y14.38:
 - HIGH FREQUENCY SYSTEM (HFS)
 - AFTER CARD TEST, BOND ITEM 151 AND ITEM 152 TO ITEM 1 USING ITEM 9 IN ACCORDANCE WITH ITEM 34, AND AS SHOWN ON ADHESIVE SHEET.
 - TRIM LEAD 1 OF ITEM 151 (T2) TO 1.30 +/- .05 AND INSULATION TO 1.00 +/- .05.
 - TRIM LEAD 2 OF ITEM 151 TO 1.03 +/- .05 AND INSULATION TO 0.73 +/- .05.
 - TRIM LEADS 3 AND 4 OF ITEM 151 TO 1.62 +/- .05 AND INSULATION TO 1.32 +/- .05.
 - TRIM LEADS OF ITEM 152 (T1) TO .900 +/- .050 AND 1.100 +/- .050, THEN TRIM INSULATION TO .600 AND .800 +/- .050 RESPECTIVELY. BEFORE INSTALLATION BOTH LEADS OF ITEMS 11, 12, 13, 89, 90, 91, 92, 93, 94, 95, 96, 97, 98, 99, 100, 101, 102, 103, 104, 105, 106 AND 107 SHALL BE PREPARED IN ACCORDANCE WITH DETAIL A. LEADS OF L17-23, 25, 26 AND 28 SHALL HAVE SLEEVING ITEM 10 COVERING AS MUCH OF THE LEADS AS POSSIBLE. SOLDER TERMINALS OF ITEM 151 AND ITEM 152 TO ITEM 1 IN ACCORDANCE WITH ITEM 4.
 - INDICATED POST OF ITEM 150 SHALL BE TRIMMED FLUSH WITH BOTTOM OF BOARD PRIOR TO INSTALLATION OF ITEM 109.
 - CUT ITEM 109 (W1 AND W2) TO APPROPRIATE LENGTHS AS SHOWN. TRIM BOTH ENDS OF ITEM 109 (W1 AND W2) .12 - .18 AS SHOWN. INSTALL CENTER CONDUCTOR OF EACH END OF W1 AND W2 INTO HOLES AS SHOWN. ENSURE COMPLETE CONTACT AND SOLDER FILLET. LAP SOLDER SHIELD OF W1 AND W2 WHERE INDICATED BY SHADED AREAS (11 PLACES).
 - (NOT USED)
 - AFTER CARD TEST BOND ITEM 16 TO ITEM 1 USING ITEM 9 IN ACCORDANCE WITH ITEM 34 AND AS SHOWN ON ADHESIVE SHEET.
 - THE BODY OF ITEMS 24 SHALL BE SOLDERED TO ITEM 1.
 - AFTER CARD TEST AND IN ACCORDANCE WITH ADHESIVE SHEET, BOND ITEMS 11, 12, 13, 89, 90, 91, 92, 93, 94, 95, 96, 97, 98, 99, 100, 101, 102, 103, 104, 105, 106 AND 107 TO ITEM 1 APPROXIMATELY WHERE INDICATED BY CROSS HATCH USING ITEM 9 IN ACCORDANCE WITH ITEM 34. USE ENOUGH OF ITEM 9 TO ENSURE LEADS OF ITEMS 11, 12, 13, 89, 90, 91, 92, 93, 94, 95, 96, 97, 98, 99, 100, 101, 102, 103, 104, 105, 106 AND 107 ARE COMPLETELY COVERED. ITEM 9 SHALL COMPLETELY FILL THE CENTERS OF ITEMS 11, 12, 13, 89, 90, 91, 92, 93, 94, 95, 96, 97, 98, 99, 100, 101, 102, 103, 104, 105, 106 AND 107, AND BE VISIBLE FOR THE ENTIRE CIRCUMFERENCE OF ITEMS 11, 12, 13, 89, 90, 91, 92, 93, 94, 95, 96, 97, 98, 99, 100, 101, 102, 103, 104, 105, 106 AND 107.
 - LEAD PROTRUSION FOR ITEMS 110, 148 AND 149 DOES NOT HAVE TO BE DISCERNABLE AFTER SOLDERING.
 - THE ALTERNATE PARTS LIST CHART DEFINES PART NUMBERS THAT CAN BE USED AS ALTERNATES.
 - HEAT STAKE ITEM 69 TOP SIDE, 2 PLACES.
 - ALL E, J1 AND J4 DESIGNATORS ARE SHOWN FOR REFERENCE ONLY.
 - ITEM 149 SHALL BE RESTRAINED BY ITEM 33 APPROXIMATELY AS SHOWN. ENSURE ITEM 69 IS ABOVE THE CABLE.
 - THE QUANTITY INDICATED FOR ITEMS 10 AND 109 ARE MEASURED IN FEET.

REVISION HISTORY			
REV	DESCRIPTION	DATE	APPROVED
A	ECO-0327490	2011-06-07	K.H.

CAD MAINTAINED. CHANGES SHALL BE INCORPORATED BY THE DESIGN ACTIVITY

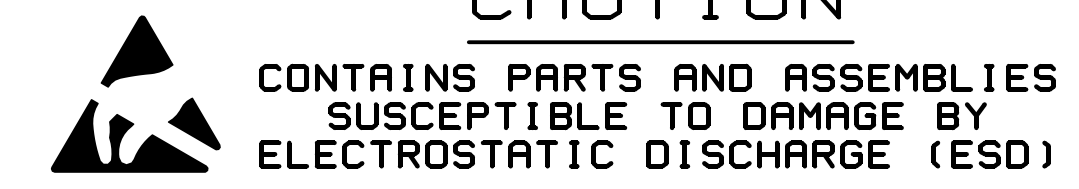
PARTS LIST CONTINUED ON THE FOLLOWING SHEET

QTY	ITEM NO	PART OR IDENTIFYING NO	NOMENCLATURE OR DESCRIPTION	DOCUMENT NO	CAGEC	NOTES	REF DESIGNATOR
	5	35	705-2437-010	RESISTOR, 0 OHM			R80, 108, 163-165
	REF	34	580-5696-001	PROCESS, THRM CONDUCTIVE ELASTOMER		14, 18, 20	
	1	33	435-1169-100	STRAP, TIEDOWN		25	
	1	32	372-9044-040	CONN, PCB, BOARD STACKING, 40 CONT			P5
	1	31	372-0593-050	CONN, PCB, HEADER, 4 CONT			P6
	1	30	357-0286-010	CONNECTOR, RADIO FREQUENCY		22	J8
	1	29	352-9139-220	TRANSISTOR, FET RF POWER			Q3
	2	28	352-9113-010	TRANSISTOR, BIP GENL PURPOSE SMALL SIG			Q1, 2
	1	27	352-1972-010	SEMICOND DVC, TRANSISTOR			U7
	1	26	351-9475-010	MICROPROCESSOR IC, PARALLEL IO PORT			U16
	2	25	351-9327-020	ANALOG IC, OTHER			U17, 18
	2	24	351-9187-030	INTERFACE IC, OTHER		19	U1, 2
	2	23	351-5422-030	ANALOG IC, OPERATIONAL AMPLIFIER			U19, 20
	2	22	351-3471-020	IC, LINEAR			U14, 15
	1	21	351-3152-590	LOGIC IC, GATE			U6
	1	20	351-3152-200	LOGIC IC, GATE			U5
	3	19	351-2953-010	ANALOG IC, OPERATIONAL AMPLIFIER			U9, 10, 13
	1	17	240-3030-080	INDUCTOR, GENERAL PURPOSE, .307UH			L37
	2	16	240-3007-040	INDUCTOR, SURFACE MOUNT POWER, 3.3UH		18	L32, 33
	2	15	240-2962-120	INDUCTOR, POWER CHIP, 22UH			L35, 36
	1	14	240-2933-210	INDUCTOR, 47UH			L34
	1	13	240-2774-460	INDUCTOR, TOROID, 6 TURNS, .3UH		14, 20	L23
	1	12	240-2774-450	INDUCTOR, TOROID, 5 TURNS, .25UH		14, 20	L28
	1	11	240-2774-130	INDUCTOR, TOROID, 6 TURNS, .59UH		14, 20	L19
	2.0	10	152-2543-000	SLEEVES, NON-HEAT SHRINK, TUBING		14, 26	
	AR	9	005-2919-010	ADHESIVE, THERMALLY CONDUCTIVE		14, 18, 20	
	AR	8	821-0650-020	INSULATING COMPOUND, ACRYLIC		9	
	REF	7	580-6520-001	STANDARD ASSY PRACTICES		10	
	REF	6	580-5458-001	CONFORMAL COATING, ACRYLIC-BASED, APPLIC		9	
	REF	5	580-1497-001	PROCESS, MARKING IDENT		7	
	REF	4	523-0778764	RC WORKMANSHIP STD MANUAL		5, 14	
	REF	3	489-0004-001	PROCEDURE, ESD		8	
	REF	2	828-7036-003	SCHEMATIC DIAGRAM			
	1	1	826-0004-861	PRINTED WIRING BOARD			

THE TECHNICAL DATA IN THIS DOCUMENT (OR FILE) IS CONTROLLED FOR EXPORT UNDER THE EXPORT ADMINISTRATION REGULATIONS (EAR), 15 CFR PARTS 730-774. VIOLATIONS OF THESE EXPORT LAWS MAY BE SUBJECT TO FINES AND PENALTIES UNDER THE EXPORT ADMINISTRATION ACT.

NOTICE: THE CONTENTS OF THIS DOCUMENT ARE PROPRIETARY TO ROCKWELL COLLINS, INC. AND SHALL NOT BE DISCLOSED, DISSEMINATED, COPIED, OR USED EXCEPT FOR PURPOSES EXPRESSLY AUTHORIZED IN WRITING BY ROCKWELL COLLINS, INC.

COPYRIGHT 2011 ROCKWELL COLLINS, INC. ALL RIGHTS RESERVED



PARTS LIST		CONTRACT NO	
		PREP	R. NUTTING 2011-06-07
		CHK	D. MUNSON 2011-06-07
		APVD	K. HAMBY 2011-06-07
983-9634-050	HFS-2200		
NEXT ASSY	USED ON	ALL SHEETS ARE THE SAME REVISION STATUS	
APPLICATION		THIRD ANGLE PROJECTION	

ROCKWELL COLLINS

CIRCUIT CARD ASSEMBLY
POWER AMPLIFIER

SIZE	CAGEC	DWG NO	REV
D	OEFDO	828-2036-003	A
SCALE	NONE	SHEET 1 OF 9	

STATE 3 - ENGINEERING RELEASE 2011-06-08

2011-06-08 06:41:16 CR5000 828-2036-003 R djmanson

PARTS LIST CONTINUED ON THE FOLLOWING SHEET

QTY	ITEM NO	PART OR IDENTIFYING NO	NOMENCLATURE OR DESCRIPTION	DOCUMENT NO	CAGEC	NOTES	REF DESIGNATOR
1	78	834-6017-710	CAPACITOR, FIXED, 22PF, 2500V				C29
1	77	834-6017-150	CAPACITOR, FIXED, 15PF, 2500V				C20
2	76	834-6017-130	CAPACITOR, FIXED, 10PF, 2500V				C33, 34
1	75	834-6017-090	CAPACITOR, FIXED, 4.7PF, 2500V				C31
1	74	834-6017-070	CAPACITOR, FIXED, 3.3PF, 2500V				C12
2	73	833-6626-850	RESISTOR, 750 OHMS				R140, 141
4	72	833-6526-560	RESISTOR, 37.4 OHMS				R31-34
1	71	833-6524-430	RESISTOR, FIXED, 1.4K OHM, .6W, 1%				R103
4	70	833-6426-210	RESISTOR, 6.8 OHMS				R135-138
1	69	757-9241-005	HANDLE			23, 25	
2	68	705-3592-020	RESISTOR, NETWORK				R61, 62
2	67	705-3546-010	RESISTOR, 1 OHMS				R87, 88
8	66	705-3543-020	RESISTOR, 0.0 OHM				R71, 72, 96, 104, 105, 118-120
1	65	705-3540-880	RESISTOR, 768K OHMS				R47
2	64	705-3540-800	RESISTOR, 619K OHMS				R44, 48
34	63	705-3540-100	RESISTOR, 100 OHMS				R1-28, 85, 86, 89, 127, 128, 132
4	62	705-3539-140	RESISTOR, 10 OHMS				R83, 84, 99, 100
1	61	705-3539-020	RESISTOR, 221K OHMS				R43
1	60	705-3538-530	RESISTOR, 59K OHMS				R126
2	59	705-3537-870	RESISTOR, 10.7K OHMS				R56, 57
2	58	705-3537-710	RESISTOR, 6490 OHMS				R81, 82
4	57	705-3537-600	RESISTOR, 4750 OHMS				R45, 46, 53, 55
1	56	705-3537-530	RESISTOR, 3920 OHMS				R40
2	55	705-3537-510	RESISTOR, 3740 OHMS				R29, 30
2	54	705-3537-290	RESISTOR, 2000 OHMS				R50, 51
1	53	705-3535-730	RESISTOR, 475 OHMS				R49
2	52	705-3535-660	RESISTOR, 392 OHMS				R97, 98
6	51	705-3535-370	RESISTOR, 4990 OHMS				R90-94, 166
1	50	705-3535-230	RESISTOR, 243 OHMS				R156
20	49	705-3535-020	RESISTOR, 10K OHMS				R39, 59, 60, 63-69, 73-75, 78, 79, 101, 102, 116, 117, 139
2	48	705-3533-760	RESISTOR, 15K OHMS				R52, 54
4	47	705-3219-480	RESISTOR, 1000 OHMS				R35-38
1	46	705-3204-990	RESISTOR, 16.9K OHMS				R133
1	45	705-3204-590	RESISTOR, 3010 OHMS				R134
8	44	705-3204-560	RESISTOR, 2740 OHMS				R110, 111, 142-146, 158
2	43	705-2439-320	RESISTOR, 750K OHMS				R112, 113
1	42	705-2439-310	RESISTOR, 681K OHMS				R154
1	41	705-2438-950	RESISTOR, 100K OHMS				R155
10	40	705-2438-440	RESISTOR, 10K OHMS				R106, 107, 147-153, 157
1	39	705-2438-300	RESISTOR, 4220 OHMS				R161
1	38	705-2438-250	RESISTOR, FIXED, 3.16K OHM, .1W, 1%				R109
2	37	705-2438-110	RESISTOR, 1500 OHMS				R159, 160
2	36	705-2438-050	RESISTOR, 1K OHMS				R114, 115

ALTERNATE PARTS LIST CHART			
ITEM NO	PART OR IDENTIFYING NO	DOCUMENT NO	CAGE CODE
30	357-0286-050		

ROCKWELL COLLINS, INC.--PROPRIETARY INFORMATION
 COPYRIGHT 2011 ROCKWELL COLLINS, INC. ALL RIGHTS RESERVED

SIZE D	CAGEC OEFDO	DWG NO 828-2036-003	REV A
SCALE NONE	SHEET 2		

2011-06-08 06:41:18 CR5000 828-2036-003 R djmanson

PARTS LIST CONTINUED ON THE FOLLOWING SHEET

QTY	ITEM NO	PART OR IDENTIFYING NO	NOMENCLATURE OR DESCRIPTION	DOCUMENT NO	CAGEC	NOTES	REF DESIGNATOR
	3	120	913-3072-050	CAPACITOR, FIXED, 1UF, 100V			C160, 162, 169
	63	119	913-3072-040	CAPACITOR, 0.1uF			C133, 157-159, 161, 163-168, 170-177, 181, 182, 187, 200-212, 217, 220-223, 237-248, 251-254, 259, 260, 262-266
	2	118	913-3067-150	CAPACITOR, 0.1uF			C135, 136
	4	117	913-3064-060	CAPACITOR, 1000pF			C152, 154-156
	4	116	913-3056-050	CAPACITOR, 1uF			C153, 188, 189, 219
	2	115	913-3056-020	CAPACITOR, 4.7uF			C1, 2
	2	114	913-2620-180	CAPACITOR, 0.01uF			C56, 57
	2	113	913-0865-500	CAPACITOR, 0.01uF			C67, 186
	2	112	913-0865-300	CAPACITOR, 220pF			C249, 250
	17	111	913-0863-050	CAPACITOR, 0.1uF			C129-132, 134, 137-140, 143-147, 198, 199, 224
	1	110	859-4830-010	CONN, PCB, HEADER, 10 CONT		21	P7
	1.3	109	858-5800-020	CABLE, COAX		15, 16, 26	W1, 2
	2	108	857-0001-030	CONNECTOR, ELECTRICAL			J2, 3
	1	107	849-0040-510	INDUCTOR, TOROID, 11 TURNS, 2.53UH		14, 20	L3
	1	106	849-0040-480	INDUCTOR, TOROID, 8 TURNS, 1.47UH		14, 20	L10
	1	105	849-0040-470	INDUCTOR, TOROID, 7 TURNS, 1.16UH		14, 20	L11
	2	104	849-0040-460	INDUCTOR, TOROID, 6 TURNS, .91UH		14, 20	L15, 16
	1	103	849-0039-470	INDUCTOR, TOROID, 7 TURNS, .42UH		14, 20	L25
	4	102	849-0039-460	INDUCTOR, TOROID, 6 TURNS, .3UH		14, 20	L24, 27, 29, 30
	1	101	849-0039-450	INDUCTOR, TOROID, 5 TURNS, .25UH		14, 20	L26
	1	100	849-0039-200	INDUCTOR, TOROID, 13 TURNS, 2.43UH		14, 20	L5
	1	99	849-0039-180	INDUCTOR, TOROID, 11 TURNS, 1.83UH		14, 20	L8
	1	98	849-0039-170	INDUCTOR, TOROID, 10 TURNS, 1.57UH		14, 20	L9
	1	97	849-0039-160	INDUCTOR, TOROID, 9 TURNS, 1.3UH		14, 20	L12
	1	96	849-0039-150	INDUCTOR, TOROID, 8 TURNS, 1.05UH		14, 20	L13
	3	95	849-0039-130	INDUCTOR, TOROID, 6 TURNS		14, 20	L17, 18, 20
	2	94	849-0039-110	INDUCTOR, TOROID, 4 TURNS		14, 20	L21, 22
	1	93	849-0039-070	INDUCTOR, TOROID, 11 TURNS, 2.78UH		14, 20	L4
	2	92	849-0039-060	INDUCTOR, TOROID, 10 TURNS, 2.38UH		14, 20	L1, 2
	1	91	849-0039-050	INDUCTOR, TOROID, 9 TURNS, 2UH		14, 20	L6
	1	90	849-0039-040	INDUCTOR, TOROID, 8 TURNS, 1.64UH		14, 20	L7
	1	89	849-0039-020	INDUCTOR, TOROID, 6 TURNS, 1UH		14, 20	L14
	1	88	849-0028-070	INDUCTOR, 0.33UH			L31
	1	87	834-6017-910	CAPACITOR, FIXED, .001UF, 1000V			C3
	3	86	834-6017-900	CAPACITOR, FIXED, 820PF, 1000V			C183-185
	3	85	834-6017-890	CAPACITOR, FIXED, 680PF, 1000V			C4, 13, 59
	6	84	834-6017-880	CAPACITOR, FIXED, 560PF, 1000V			C68, 88, 95-98
	4	83	834-6017-870	CAPACITOR, FIXED, 470PF, 1500V			C21, 86, 87, 109
	5	82	834-6017-860	CAPACITOR, FIXED, 390PF, 1500V			C15, 69-72
	1	81	834-6017-850	CAPACITOR, FIXED, 330PF, 1500V			C63
	1	80	834-6017-840	CAPACITOR, FIXED, 270PF, 2500V			C58
	1	79	834-6017-760	CAPACITOR, FIXED, 56PF, 2500V			C10

ROCKWELL COLLINS, INC.--PROPRIETARY INFORMATION
 COPYRIGHT 2011 ROCKWELL COLLINS, INC. ALL RIGHTS RESERVED

SIZE D	CAGEC OEFDO	DWG NO 828-2036-003	REV A
SCALE NONE	SHEET 3		

2011-06-08 06:41:18 CR5000 828-2036-003 R djmanson

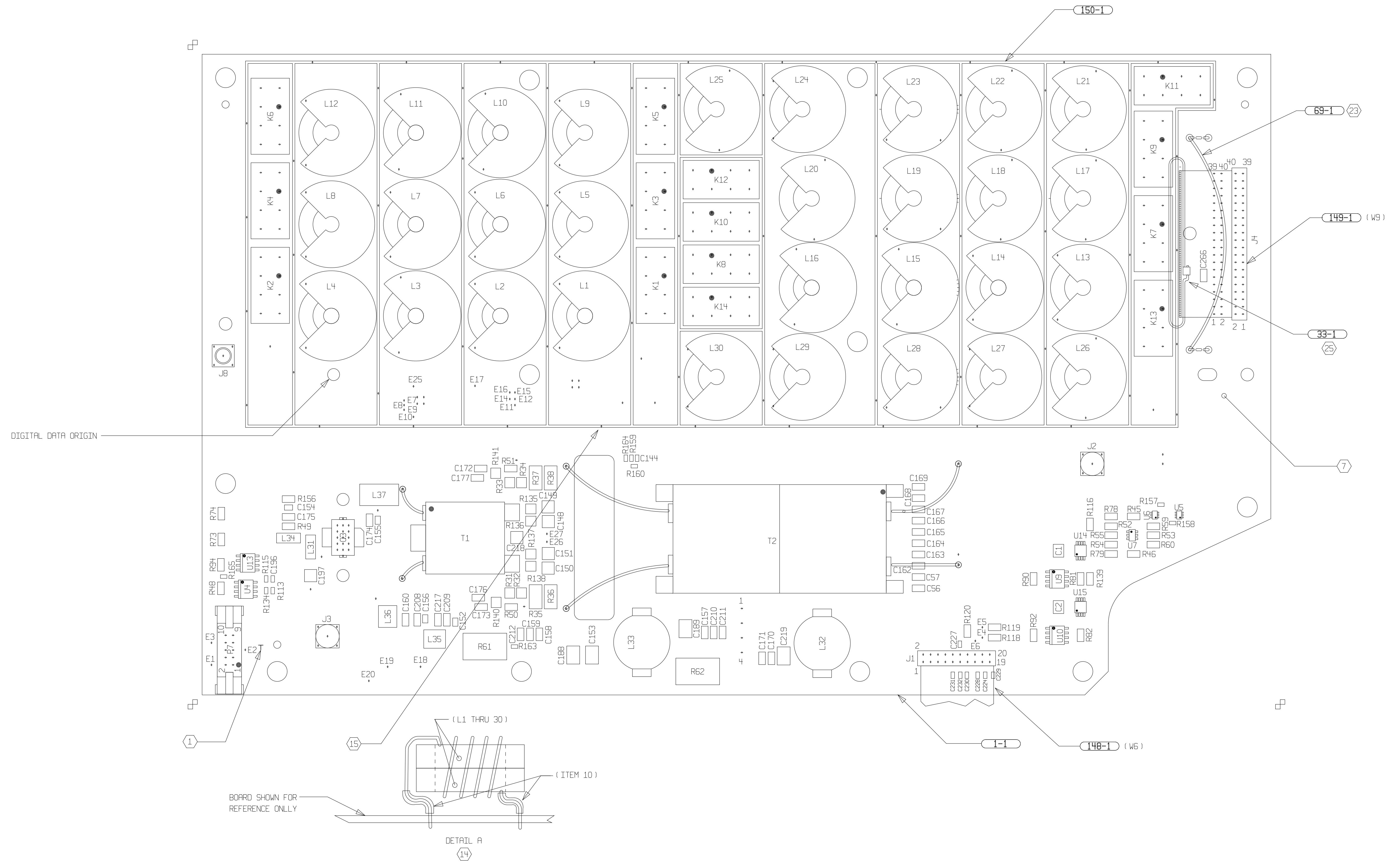
QTY	ITEM NO	PART OR IDENTIFYING NO	NOMENCLATURE OR DESCRIPTION	DOCUMENT NO	CAGEC	NOTES	REF DESIGNATOR
2	153	351-0482-020	IC, LINEAR				U3,4
1	152	983-9588-002	TRANSFORMER, RF			14	T1
1	151	983-9588-001	TRANSFORMER, FINAL AMPLIFIER			14	T2
1	150	983-9396-003	FENCE, LPF SHIELD			9, 15	
1	149	983-9395-019	RIBBON CABLE ASSEMBLY			21, 25	
1	148	983-9395-007	RIBBON CABLE ASSEMBLY			21	
14	147	974-1502-040	ELECTROMECHANICAL RELAY				K1-14
2	146	914-3510-300	CAPACITOR, FIXED, 160PF, 300V				C42,43
6	145	914-3510-290	CAPACITOR, FIXED, 150PF, 300V				C36, 123-127
1	144	914-3510-280	CAPACITOR, FIXED, 130PF, 300V				C118
7	143	914-3510-270	CAPACITOR, FIXED, 120PF, 300V				C105, 110-114, 119
11	142	914-3510-260	CAPACITOR, FIXED, 110PF, 300V				C62, 64, 66, 91, 100-104, 115, 117
4	141	914-3510-250	CAPACITOR, FIXED, 100PF, 500V				C84, 89, 90, 128
10	140	914-3510-240	CAPACITOR, FIXED, 91PF, 500V				C74-81, 85, 122
4	139	914-3510-230	CAPACITOR, FIXED, 82PF, 500V				C40, 50, 106, 116
3	138	914-3510-220	CAPACITOR, FIXED, 75PF, 500V				C61, 65, 83
3	137	914-3510-210	CAPACITOR, FIXED, 68PF, 500V				C41, 47, 107
4	136	914-3510-200	CAPACITOR, FIXED, 62PF, 500V				C37-39, 120
1	135	914-3510-190	CAPACITOR, FIXED, 56PF, 500V				C82
1	134	914-3510-170	CAPACITOR, FIXED, 47PF, 500V				C108
2	133	914-3510-160	CAPACITOR, FIXED, 43PF, 500V				C92, 93
2	132	914-3510-150	CAPACITOR, FIXED, 39PF, 500V				C46, 94
2	131	914-3510-110	CAPACITOR, FIXED, 27PF, 500V				C44, 45
1	130	914-3510-100	CAPACITOR, FIXED, 24PF, 500V				C73
1	129	914-3510-090	CAPACITOR, FIXED, 22PF, 500V				C121
2	128	914-3510-070	CAPACITOR, FIXED, 18PF, 500V				C51, 99
2	127	914-3510-050	CAPACITOR, FIXED, 15PF, 500V				C35, 49
2	126	914-3510-020	CAPACITOR, FIXED, 11PF, 500V				C48, 52
2	125	914-3503-470	CAPACITOR, 82pF				C267, 268
4	124	914-0657-860	CAPACITOR, FIXED, .0047UF, 50V				C148-151
1	123	914-0657-810	CAPACITOR, FIXED, .003UF, 50V				C197
1	122	914-0657-490	CAPACITOR, FIXED, 130PF, 300V				C218
13	121	913-3348-010	CAPACITOR, FIXED, .01UF, 100V				C142, 190-194, 196, 227-232

PARTS LIST

ROCKWELL COLLINS, INC.--PROPRIETARY INFORMATION
 COPYRIGHT 2011 ROCKWELL COLLINS, INC. ALL RIGHTS RESERVED

SIZE D	CAGEC OEFDO	DWG NO 828-2036-003	REV A
SCALE NONE	SHEET 4		

2011-06-08 06:41:41 CR5000 828-2036-003 R djmanson



DIGITAL DATA ORIGIN

BOARD SHOWN FOR REFERENCE ONLY

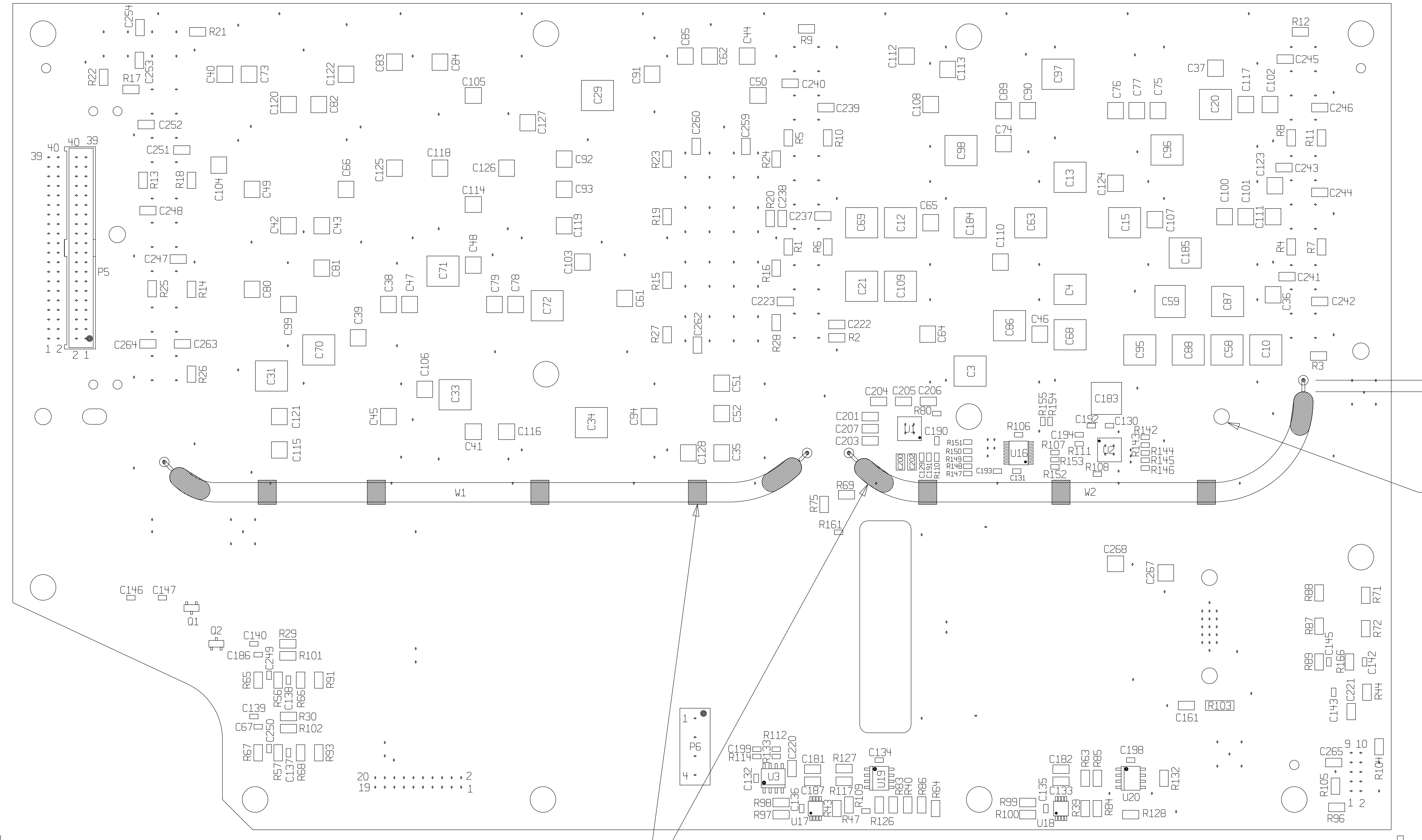
DETAIL A

COMPONENTS TOP

ROCKWELL COLLINS, INC.--PROPRIETARY INFORMATION
 COPYRIGHT 2011 ROCKWELL COLLINS, INC. ALL RIGHTS RESERVED

SIZE D	CAGEC OEFD0	DWG NO 828-2036-003	REV A
SCALE NONE	SHEET 5		

2011-06-08 06:41:41 CR5000 828-2036-003 R djmanson

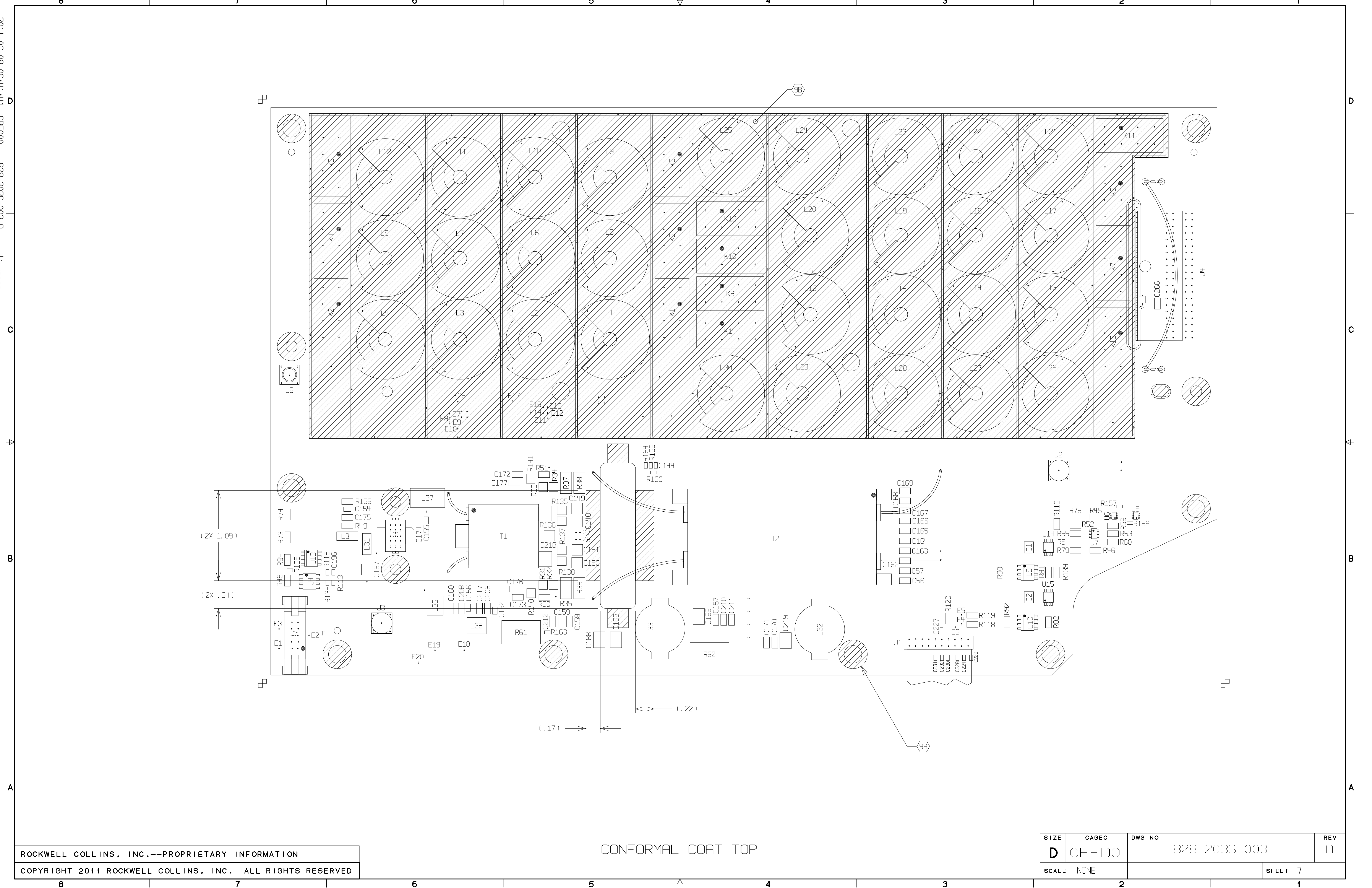


ROCKWELL COLLINS, INC.--PROPRIETARY INFORMATION
COPYRIGHT 2011 ROCKWELL COLLINS, INC. ALL RIGHTS RESERVED

COMPONENTS BOTTOM

SIZE D	CAGEC OEFDO	DWG NO 828-2036-003	REV A
SCALE NONE	SHEET 6		

2011-06-08 06:41:41 CR5000 828-2036-003 R dJimerson

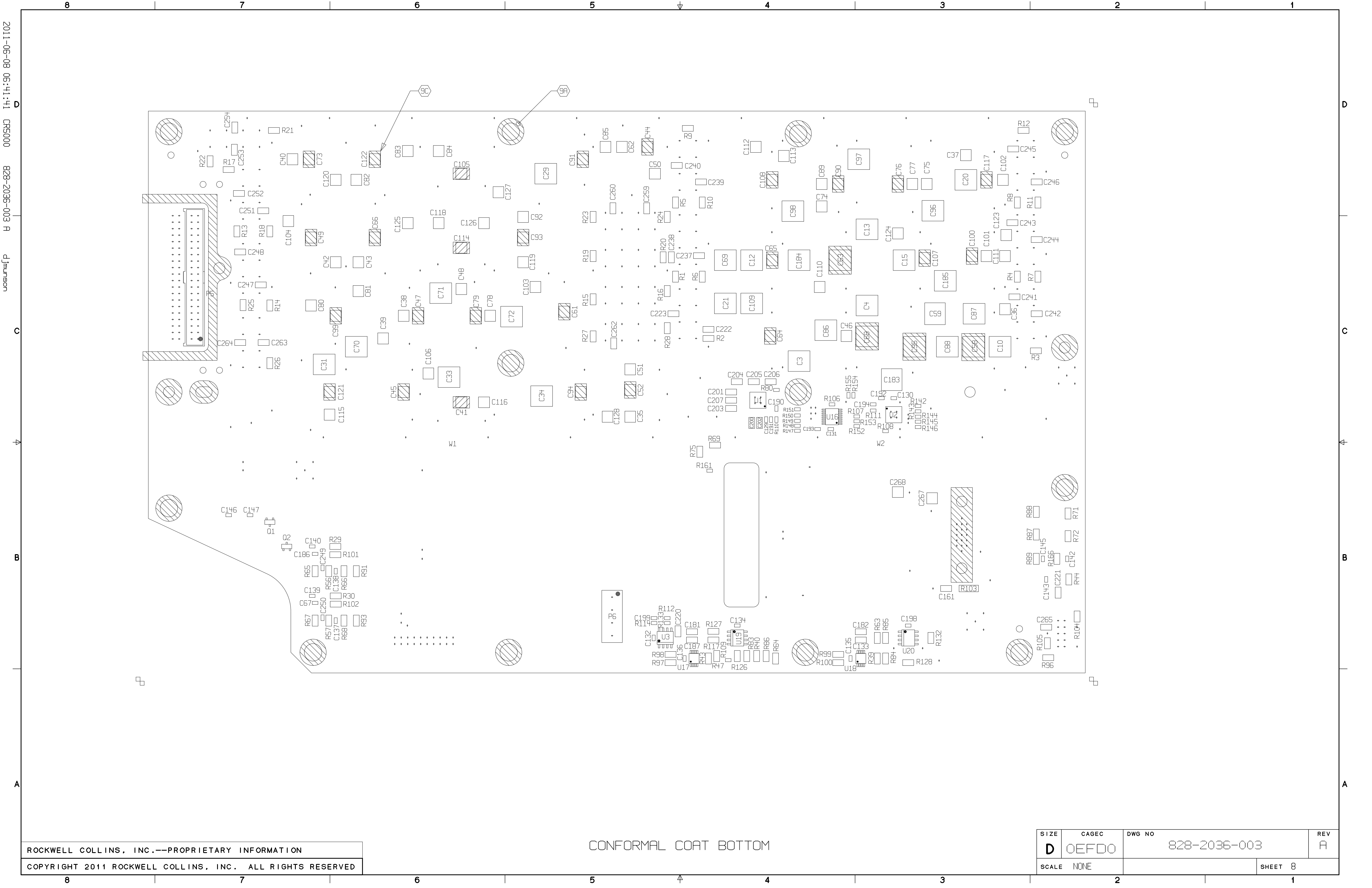


ROCKWELL COLLINS, INC.--PROPRIETARY INFORMATION
 COPYRIGHT 2011 ROCKWELL COLLINS, INC. ALL RIGHTS RESERVED

CONFORMAL COAT TOP

SIZE D	CAGEC OEFDO	DWG NO 828-2036-003	REV A
SCALE NONE	SHEET 7		

2011-06-08 06:41:41 CR5000 828-2036-003 R djmanson

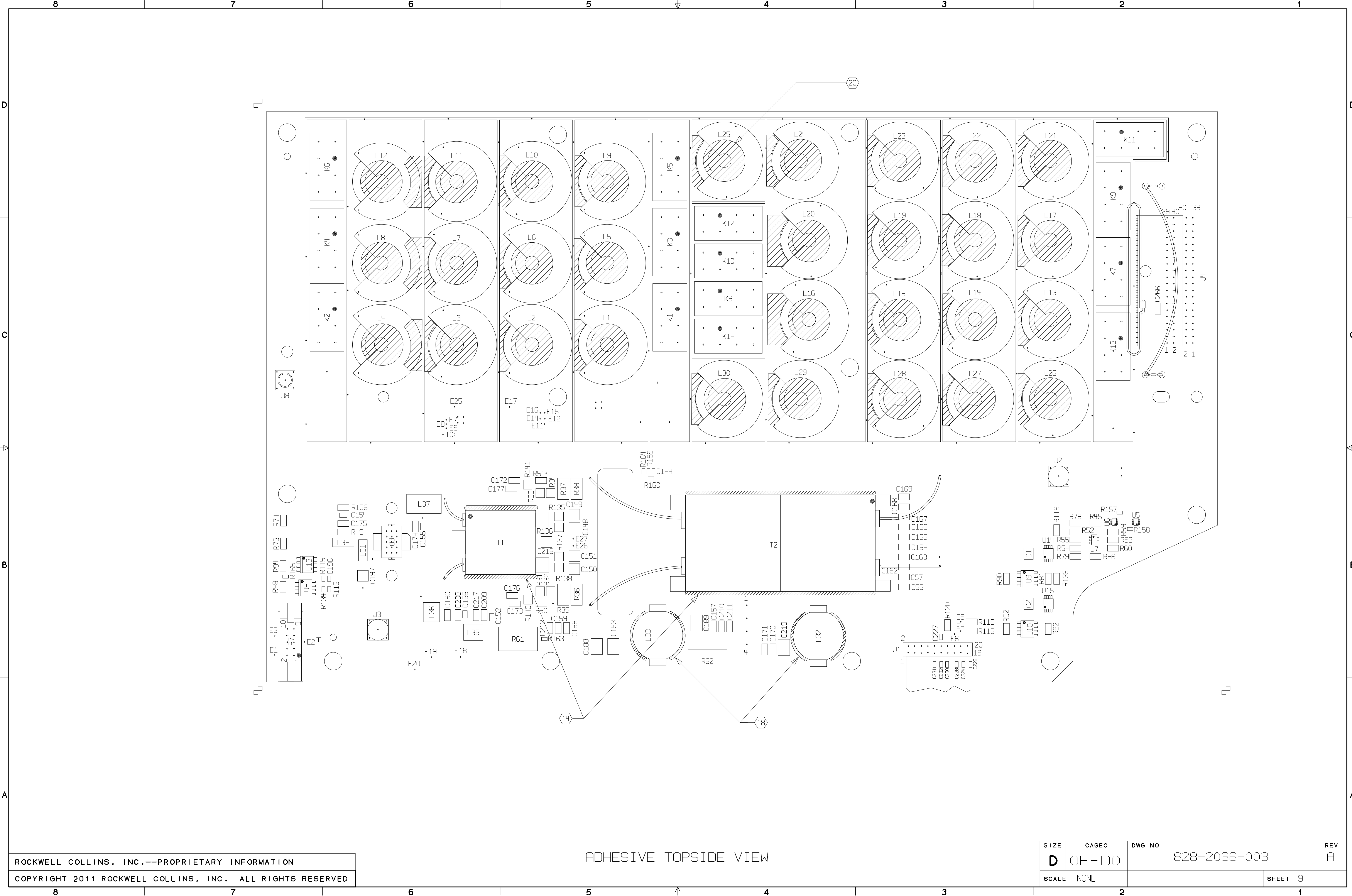


ROCKWELL COLLINS, INC.--PROPRIETARY INFORMATION
COPYRIGHT 2011 ROCKWELL COLLINS, INC. ALL RIGHTS RESERVED

CONFORMAL COAT BOTTOM

SIZE D	CAGEC OEFD0	DWG NO 828-2036-003	REV A
SCALE NONE	SHEET 8		

2011-06-08 06:41:41 CR5000 828-2036-003 R dJimerson



ADHESIVE TOPSIDE VIEW

ROCKWELL COLLINS, INC.--PROPRIETARY INFORMATION
 COPYRIGHT 2011 ROCKWELL COLLINS, INC. ALL RIGHTS RESERVED

SIZE D	CAGEC OEFDO	DWG NO 828-2036-003	REV A
SCALE NONE		SHEET 9	