

2011-02-20 12:28:39 CR5000 828-2035-002 C hwcarter

NOTES:

1. "T" DESIGNATES CIRCUIT CARD ASSEMBLY TOP SURFACE.
2. REFERENCE DESIGNATORS USED IN LIEU OF ITEM NUMBERS.
3. PARENTHETICAL INFORMATION IS FOR REFERENCE ONLY.
4. ITEM IDENTIFICATION BALLOONS DENOTE ITEM NUMBER OR ITEM NUMBER - QUANTITY.
5. UNLESS OTHERWISE SPECIFIED, ASSEMBLY SHALL BE IN ACCORDANCE WITH ITEM 5. ADDITIONAL MODIFICATIONS SHALL BE IN ACCORDANCE WITH ITEM 237.
6. Z MAX DIMENSIONS, EXCLUDING CONNECTORS, PIN FIELDS, AND MECHANICAL HARDWARE:  
 Z TOP SHALL BE 1.100  
 Z BOTTOM SHALL BE .240  
 MAXIMUM LEAD PROTRUSION SHALL BE .090
7. APPLY IDENTIFICATION MARKING IN APPROXIMATE LOCATION SHOWN, IN ACCORDANCE WITH ITEM 6 TYPE 2, CLASS II.
8. CAUTION: THIS ASSEMBLY CONTAINS ELECTROSTATIC DISCHARGE SENSITIVE DEVICES, AND/OR ASSEMBLIES IDENTIFIED AS CLASS 1 IN ACCORDANCE WITH MIL-STD-1686. HANDLE IN ACCORDANCE WITH ITEM 4. ESD SYMBOL APPLIED BY PRINTED WIRING BOARD FABRICATION PROCESS.
9. THIS CIRCUIT CARD ASSEMBLY WILL BE TESTED AT A HIGHER LEVEL.
10. ITEM 8 MAY BE UTILIZED ON THIS ASSEMBLY.
11. DIMENSIONING AND TOLERANCING SHALL BE INTERPRETED IN ACCORDANCE WITH ASME Y14.5M-1994. DIMENSIONS AND TOLERANCES ARE IN INCHES.
12. ABBREVIATIONS AND ACRONYMS NOT IN ACCORDANCE WITH ASME Y14.38:  
 HIGH FREQUENCY SYSTEM (HFS)
13. USING ITEM 3, IN ACCORDANCE WITH ITEM 7, BOND ITEMS 17, 19, 77, 153, 228 AND 229 TO BOARD TOPSIDE AND ADJACENT COMPONENTS APPROXIMATELY WHERE INDICATED BY DOUBLE CROSS HATCH AREAS.
14. THE BODY OF ITEMS 34 AND 35 SHALL BE SOLDERED TO ITEM 1.
15. ALL E DESIGNATORS AND J3 ARE SHOWN FOR REFERENCE ONLY.
16. APPLY ITEM 11 TO THE FLAT LEADS OF ITEM 81 (T9). TUBING SHOULD BE WITHIN .200 OF T9 AND WITHIN .250 OF ITEM 1. FORM, SOLDER AND TRIM LEADS OF T9 AS SHOWN.
17. WRAP WIRES ITEM 74 AND 75 AROUND TERMINALS OF ITEM 81 APPROXIMATELY AS SHOWN IN SECTION M-M.
18. INSTALL ITEM 76 FLUSH WITH EDGE OF ITEM 1.
19. CONFORMAL COAT ASSEMBLY USING ITEM 9 IN ACCORDANCE WITH ITEM 10. HATCHED AREAS INDICATED SHALL BE FREE OF CONFORMAL COATING, AND SHALL APPROXIMATE SOLDER MASK CLEARANCE ON FAB BOARD.
20. ITEMS 74 AND 75 (W1 THRU W4) ARE CRITICAL ROUTING. SOLDERMASK HAS VISUAL AIDS TO ENSURE ACCURACY OF PLACEMENT. BOND WIRES W1 THRU W4 TO BOTTOM SIDE OF BOARD APPROXIMATELY WHERE SHOWN USING ITEM 3 IN ACCORDANCE WITH ITEM 7. ITEM 3 SHALL NOT PROTRUDE ABOVE WIRES. ITEM 3 SHALL NOT EXTEND PAST EDGE OF BOARD.
21. ALIGN ITEM 15 (LED'S) WITH BOARD EDGE USING TOOL CPN (653-5076-042) BEFORE SOLDERING.
22. DO NOT INSTALL LEAD 1 OF ITEM 190. TO BE INSTALLED AT NEXT HIGHER LEVEL.
23. BEFORE INSTALLATION CUT LEADS 3 AND 4 OF ITEM 189 AS CLOSE TO THE BODY OF THE PART AS POSSIBLE.
24. INSTALL ITEMS 49-51, 232 AND 233 AFTER CARD TEST.
25. THE QUANTITY INDICATED FOR THIS ITEM IS MEASURED IN FEET.
26. Q8 AND 13 SHALL BE REWORKED PER WORKMANSHIP STANDARD TO ENSURE HOLES UNDER THE BODY OF THE PART ARE COMPLETELY FILLED WITH SOLDER TO AT LEAST BOTTOM OF THE BOARD AND MAX .03 HIGHER THAN BOTTOM OF THE BOARD.
27. DISREGARD SILKSCREEN ON PWB FOR ITEM 77 (T5) AND INSTALL TO ALLOW FOR STRESS RELIEF.

REVISION HISTORY			
REV	DESCRIPTION	DATE	APPROVED
C	ECO-0315638	2011-02-16	G.Z.

CAD MAINTAINED. CHANGES SHALL BE INCORPORATED BY THE DESIGN ACTIVITY

PARTS LIST CONTINUED ON THE FOLLOWING SHEET

QTY	ITEM NO	PART OR IDENTIFYING NO	NOMENCLATURE OR DESCRIPTION	DOCUMENT NO	CAGEC	NOTES	REF DESIGNATOR
2	35	351-6941-250	INTERFACE IC, MOSFET DRIVER			14	U8, 11
1	34	351-6727-010	ANALOG IC, SWITCHING REGULATOR			14	U4
1	33	351-5422-030	ANALOG IC, OPERATIONAL AMPLIFIER				U9
5	32	351-5411-010	ANALOG IC, COMPARATOR				U15, 21, 600-602
1	31	351-3706-070	LOGIC IC, FF/LATCH				U27
1	30	351-2597-010	IC, LINEAR				U1
2	29	351-0073-050	OPTOCOUPLER - TRANSISTOR OUTPUT				U7, 26
4	28	343-0135-000	SCREW, .112-40X.375				
4	27	342-0046-000	SCREW, .112-40X.375				
10	26	333-0605-000	NUT, HEX, 0.112-40				
2	25	330-0803-680	SCREW, PAN, 0.112-40, .438				
1	24	343-0176-000	SCREW, PAN, .138-32, .875				
1	23	343-0175-000	SCREW, PAN, .138-32, .875				
10	22	310-0779-030	WASHER, FLAT - .247 OD				
6	20	306-2721-010	TERMINAL, TEST POINT				TP5-8, 12, 13
1	19	288-0942-070	BEAD, SHIELDING			13	
1	18	288-0151-020	BEAD, FERRITE				Z2
1	17	278-0884-010	TRANSFORMER, POWER/MAINS			13	T6
1	16	276-0729-460	INDUCTOR, SURFACE MOUNT POWER				L1
3	15	262-3174-040	VISIBLE LED			21	DS1-3
1	14	240-3107-010	INDUCTOR				L4
1	13	240-3011-480	INDUCTOR, GENERAL PURPOSE, 3.6UH				L7
2	12	183-1663-350	CAPACITOR, 330uF				C56, 160
AR	11	152-3971-000	SLEEVES, HEAT SHRINK, TUBING			16	
REF	10	580-5458-001	CONFORMAL COATING, ACRYLIC-BASED, APPLIC			19	
AR	9	821-0650-020	INSULATING COMPOUND, ACRYLIC			19	
REF	8	580-6520-001	STANDARD ASSY PRACTICES			10	
REF	7	580-5205-010	ADHESIVE/SEALANT PROCEDURE			13, 20	
REF	6	580-1497-001	PROCESS, MARKING IDENT			7	
REF	5	523-0778764	RC WORKMANSHIP STD MANUAL			5	
REF	4	489-0004-001	PROCEDURE, ESD			8	
AR	3	005-2984-010	ADHESIVE, SILICONE			13, 20	
REF	2	828-7035-002	SCHEMATIC DIAGRAM				
1	1	826-0004-705	PRINTED WIRING BOARD				

THE TECHNICAL DATA IN THIS DOCUMENT (OR FILE) IS CONTROLLED FOR EXPORT UNDER THE EXPORT ADMINISTRATION REGULATIONS (EAR), 15 CFR PARTS 730-774. VIOLATIONS OF THESE EXPORT LAWS MAY BE SUBJECT TO FINES AND PENALTIES UNDER THE EXPORT ADMINISTRATION ACT.

NOTICE: THE CONTENTS OF THIS DOCUMENT ARE PROPRIETARY TO ROCKWELL COLLINS, INC. AND SHALL NOT BE DISCLOSED, DISSEMINATED, COPIED, OR USED EXCEPT FOR PURPOSES EXPRESSLY AUTHORIZED IN WRITING BY ROCKWELL COLLINS, INC.

COPYRIGHT 2011 ROCKWELL COLLINS, INC. ALL RIGHTS RESERVED



CONTRACT NO		-----	
PREP	S. RUTHERFORD	2010-05-05	
CHK	T. KLEYMANN	2010-05-05	
APVD	K. HAMBY	2010-05-05	
NEXT ASSY	983-9400-002	USED ON	HFS-2200
APPLICATION		THIRD ANGLE PROJECTION	

**ROCKWELL COLLINS**

CIRCUIT CARD ASSEMBLY  
A3 POWER SUPPLY

SIZE	CAGEC	DWG NO	REV
D	OEFDO	828-2035-002	C
SCALE	NONE		SHEET 1 OF 20

2011-02-20 12:28:39 CR5000 828-2035-002 C hmcarter

PARTS LIST CONTINUED ON THE FOLLOWING SHEET

QTY	ITEM NO	PART OR IDENTIFYING NO	NOMENCLATURE OR DESCRIPTION	DOCUMENT NO	CAGEC	NOTES	REF DESIGNATOR
2	80	664-8071-010	TRANSFORMER, PULSE/DATACOM				T12, 13
5	79	664-0235-030	TRANSFORMER				T1, 3, 11, 100, 101
1	78	662-1061-020	SURFACE MOUNT TRANSFORMER				T2
2	77	662-1043-010	TRANSFORMER, POWER/MAINS			13, 27	T4, 5
2	76	653-4789-001	FOAM BLOCK			18	
2	75	439-4473-000	WIRE, ELECTRICAL			17, 20, 25	W2, 4
2	74	439-4471-000	WIRE, ELECTRICAL			17, 20, 25	W1, 3
1	73	372-7577-040	CONNECTOR, PCB, HEADER				P1
1	72	372-0595-010	CONN, PCB, POWER SOCKET, 4 CONT				J6
1	71	372-0570-080	CONN, PCB, ELEVATED SOCKET, 40 CONT				J5
1	70	372-0441-060	CONNECTOR, RECT, POWER CONNECTOR, 3 CONT				P2
2	69	353-8137-090	SEMICON DVC, DIODE				CR1003, 1004
5	68	353-8136-030	SEMICONDUCTOR DEVICE, DIODE				CR12, 20, 111, 112, 604
8	67	353-8133-200	DIODE, VOLTAGE REFERENCE				VR3, 8-14
1	66	353-8133-140	DIODE, VOLTAGE REFERENCE				VR104
1	65	353-8133-120	DIODE, VOLTAGE REFERENCE				VR600
2	64	353-8133-070	DIODE, VOLTAGE REFERENCE				VR7, 1002
2	63	353-8127-090	DIODE, VOLTAGE REFERENCE				VR2, 102
2	62	353-8127-080	DIODE, VOLTAGE REFERENCE				VR6, 103
1	61	353-8127-060	DIODE, VOLTAGE REFERENCE				VR100
2	60	353-8127-030	DIODE, VOLTAGE REFERENCE				VR5, 101
6	58	353-6847-010	DIODE, RECTIFIER				CR13-15, 17, 26, 27
1	57	353-6821-010	SEMICON DVC, DIODE				CR113
2	56	353-6672-030	DIODE, RECTIFIER				CR103, 104
1	55	353-6650-010	SEMICON DVC, DIODE, SCHOTTKY				CR8
5	54	353-4045-020	DIODE, RECTIFIER				CR105-109
1	53	353-4043-020	DIODE, RECTIFIER				CR7
8	52	353-1552-010	DIODE, SCHOTTKY				CR1, 11, 21, 23-25, 98, 99
4	51	352-9132-660	INSUL/SPCR PAD, POLYMER			24	
9	50	352-9132-650	INSUL/SPCR PAD, POLYMER			24	
8	49	352-9132-640	INSUL/SPCR PAD, POLYMER			24	
5	48	352-9114-020	SEMICONDUCTOR DEVICE, TRANSISTOR				Q4, 19, 21, 22, 1002
8	47	352-9113-010	SEMICONDUCTOR DEVICE, TRANSISTOR				Q5, 24, 25, 101, 102, 107, 603, 1003
4	46	352-3002-360	TRANSISTOR, FET GENERAL PURPOSE PWR				Q10-12, 23
1	45	352-3002-210	TRANSISTOR, FET GENERAL PURPOSE PWR				Q3
1	44	352-1976-030	TRANSISTOR, FET GENERAL PURPOSE PWR				Q18
3	43	352-1970-270	TRANSISTOR, FET GENERAL PURPOSE PWR				Q20, 100, 104
1	42	352-1967-650	TRANSISTOR, FET GENERAL PURPOSE PWR				Q1
8	41	352-1967-720	TRANSISTOR, FET GENERAL PURPOSE, PWR			26	Q2, 7, 8, 13-17
1	40	352-1967-250	TRANSISTOR, FET GENERAL PURPOSE PWR				Q103
2	39	352-1967-150	TRANSISTOR, FET GENERAL PURPOSE PWR				Q105, 106
1	38	352-1966-060	SEMICON DVC, TRANSISTOR				U24
1	37	352-1283-010	TRANSISTOR, BIP GENL PURPOSE SMALL SIG				U1002
1	36	351-9503-020	ANALOG IC, SWITCHING REGULATOR				U10

ROCKWELL COLLINS, INC.--PROPRIETARY INFORMATION  
 COPYRIGHT 2011 ROCKWELL COLLINS, INC. ALL RIGHTS RESERVED

SIZE <b>D</b>	CAGEC OEFDO	DWG NO 828-2035-002	REV C
SCALE NONE	SHEET 2		

2011-02-20 12:28:39 CR5000 828-2035-002 C hmcarter

PARTS LIST CONTINUED ON THE FOLLOWING SHEET

QTY	ITEM NO	PART OR IDENTIFYING NO	NOMENCLATURE OR DESCRIPTION	DOCUMENT NO	CAGEC	NOTES	REF DESIGNATOR
2	118	705-2439-080	RESISTOR, 182K OHMS				R32, 223
1	117	705-2439-060	RESISTOR, 162K OHMS				R38
1	116	705-2439-050	RESISTOR, 150K OHMS				R49
1	115	705-2438-990	RESISTOR, 121K OHMS				R644
13	114	705-2438-950	RESISTOR, 100K OHMS				R41, 42, 124, 125, 136, 193-195, 221, 228, 229, 1009, 1047
3	113	705-2438-800	RESISTOR, 51.1K OHMS				R18, 185, 227
2	112	705-2438-680	RESISTOR, 30.1K OHMS				R51, 219
4	111	705-2438-650	RESISTOR, 26.7K OHMS				R603, 645, 646, 1046
3	110	705-2438-630	RESISTOR, 23.7K OHMS				R187, 1018, 1048
2	109	705-2438-590	RESISTOR, 20K OHMS				R82, 198
1	108	705-2438-540	RESISTOR, 15K OHMS				R614
2	107	705-2438-520	RESISTOR, 13.3K OHMS				R3, 1036
1	106	705-2438-510	RESISTOR, 13K OHMS				R610
2	105	705-2438-490	RESISTOR, 12.1K OHMS				R1019, 1025
3	104	705-2438-460	RESISTOR, 11K OHMS				R57, 642, 1026
47	103	705-2438-440	RESISTOR, 10K OHMS				R7, 17, 19-22, 24, 28, 39, 43, 65, 81, 86, 97, 109, 120, 126, 127, 137, 138, 145, 150-152, 177, 182, 186, 188, 189, 191, 192, 205, 206, 211-213, 220, 222, 604, 608, 611, 612, 618, 619, 641, 643, 1021
1	102	705-2438-420	RESISTOR, 8250 OHMS				R613
4	101	705-2438-350	RESISTOR, 5.11K OHMS				R29, 98, 156, 157
7	100	705-2438-340	RESISTOR, 4.99K OHMS				R8, 89, 144, 216-218, 1042
3	99	705-2438-330	RESISTOR, 4750 OHMS				R25, 26, 45
2	98	705-2438-260	RESISTOR, 3320 OHMS				R158, 159
4	97	705-2438-250	RESISTOR, 3160 OHMS				R9, 1001, 1003, 1043
2	96	705-2438-230	RESISTOR, 2610 OHMS				R13, 167
2	95	705-2438-220	RESISTOR, 2490 OHMS				R1016, 1028
1	94	705-2438-170	RESISTOR, 2150 OHMS				R1032
3	93	705-2438-160	RESISTOR, 2000 OHMS				R48, 149, 616
23	92	705-2438-050	RESISTOR, 1K OHMS				R4, 27, 37, 50, 52, 56, 59, 60, 76, 84, 96, 132, 133, 135, 146, 196, 197, 210, 609, 1002, 1017, 1020, 1053
1	91	705-2438-020	RESISTOR, 909 OHMS				R5
6	90	705-2437-880	RESISTOR, 499 OHMS				R46, 47, 147, 148, 160, 204
3	89	705-2437-690	RESISTOR, 221 OHMS				R129, 165, 166
3	88	705-2437-650	RESISTOR, 196 OHMS				R606, 1004, 1041
2	87	705-2437-590	RESISTOR, 154 OHMS				R33, 34
5	86	705-2437-480	RESISTOR, 100 OHMS				R2, 12, 15, 620, 621
1	85	705-2437-050	RESISTOR, 10 OHMS				R44
3	84	705-2437-010	RESISTOR, 0 OHM				R30, 93, 99
1	83	679-1831-000	RETAINER, TOROID				
2	82	679-1819-000	RETAINER, TOROID				
1	81	672-0681-020	TRANSFORMER, POWER/MAINS			16, 17	T9

ROCKWELL COLLINS, INC.--PROPRIETARY INFORMATION  
 COPYRIGHT 2011 ROCKWELL COLLINS, INC. ALL RIGHTS RESERVED

SIZE <b>D</b>	CAGEC OEFDO	DWG NO 828-2035-002	REV C
SCALE NONE	SHEET 3		

2011-02-20 12:28:39 CR5000 828-2035-002 C hmcarter

PARTS LIST CONTINUED ON THE FOLLOWING SHEET

QTY	ITEM NO	PART OR IDENTIFYING NO	NOMENCLATURE OR DESCRIPTION	DOCUMENT NO	CAGEC	NOTES	REF DESIGNATOR
4	162	833-6526-690	RESISTOR, 51.1 OHMS				R31, 110, 122, 123
1	161	833-6526-510	RESISTOR, 33.2 OHMS				R139
1	160	833-6526-300	RESISTOR, 20 OHMS				R66
1	159	833-6426-150	RESISTOR, 3.9 OHMS				R134
2	158	833-6426-080	RESISTOR, 2 OHMS				R61, 92
8	157	833-6083-330	RESISTOR, 0.5 OHM				R53, 83, 87, 88, 161-164
2	156	833-6083-270	RESISTOR, 1 OHM				R10, 55
2	155	747-5349-000	RESISTOR, FIXED, 270 OHM, 3W, 5%				R131, 171
2	154	747-1988-330	RESISTOR, 10K OHMS				R70, 71
3	153	714-3258-330	RESISTOR, VOLTAGE DEPENDENT			13	RV1-3
1	152	705-3621-190	RESISTOR, FIXED				R103
4	151	705-3621-170	RESONATOR, CERAMIC				R90, 153-155
1	150	705-3613-370	RESISTOR, FIXED, 100 OHM, .1W, 1%				R85
1	149	705-3611-030	RESISTOR, FIXED, 0 OHM				R6
2	148	705-3540-490	RESISTOR, 287 OHMS				R113, 140
2	147	705-3540-100	RESISTOR, 100 OHMS				R72, 73
4	146	705-3539-220	RESISTOR, 12.1 OHMS				R62, 77, 78, 128
1	145	705-3539-140	RESISTOR, 10 OHMS				R647
5	144	705-3539-070	RESISTOR, 249K OHMS				R117, 118, 121, 130, 214
1	143	705-3538-770	RESISTOR, 113K OHMS				R601
11	142	705-3538-470	RESISTOR, 51.1K OHMS				R63, 101, 102, 104-108, 111, 116, 141
1	141	705-3537-380	RESISTOR, 2490 OHMS				R112
1	140	705-3535-760	RESISTOR, 511 OHMS				R79
2	139	705-3535-370	RESISTOR, 4990 OHMS				R74, 75
17	138	705-3535-200	RESISTOR, 1000 OHMS				R168-170, 172-176, 178-180, 184, 200-203, 615
1	137	705-3535-100	RESISTOR, 200K OHMS				R1060
2	136	705-3535-090	RESISTOR, 150K OHMS				R225, 600
6	135	705-3535-060	RESISTOR, 100K OHMS				R11, 68, 69, 115, 142, 143
1	134	705-3535-020	RESISTOR, 10K OHMS				R58
1	133	705-3525-430	RESISTOR, 649 OHMS				R94
1	132	705-3519-800	RESISTOR, 10.7K OHMS				R1000
1	131	705-3519-510	RESISTOR, 2740 OHMS				R183
8	130	705-3514-010	RESISTOR, FIXED, 10 OHM, .15W, 10%				R1, 14, 16, 23, 35, 36, 80, 95
1	129	705-3208-300	RESISTOR, FIXED, 1K OHM, 25W, 1%				R114
2	128	705-3208-050	RESISTOR, 33 OHMS				R231, 233
1	127	705-3205-070	RESISTOR, 23.2K OHMS				R119
1	126	705-3204-730	RESISTOR, 5760 OHMS				R605
1	125	705-3204-710	RESISTOR, 5230 OHMS				R607
1	124	705-3204-350	RESISTOR, 1130 OHMS				R190
1	123	705-2439-380	RESISTOR, 1M OHMS				R226
4	122	705-2439-260	RESISTOR, 511K OHMS				R199, 230, 640, 1031
1	121	705-2439-240	RESISTOR, 475K OHMS				R602
1	120	705-2439-170	RESISTOR, 287K OHMS				R54
1	119	705-2439-110	RESISTOR, 200K OHMS				R617

ROCKWELL COLLINS, INC.--PROPRIETARY INFORMATION  
 COPYRIGHT 2011 ROCKWELL COLLINS, INC. ALL RIGHTS RESERVED

SIZE <b>D</b>	CAGEC OEFDO	DWG NO 828-2035-002	REV C
SCALE NONE	SHEET 4		

2011-02-20 12:28:40 CR5000 828-2035-002 C hmcarter

PARTS LIST CONTINUED ON THE FOLLOWING SHEET

QTY	ITEM NO	PART OR IDENTIFYING NO	NOMENCLATURE OR DESCRIPTION	DOCUMENT NO	CAGEC	NOTES	REF DESIGNATOR
1	206	913-0866-480	CAPACITOR, 1uF				C62
1	205	913-0866-160	CAPACITOR, 220pF				C13
3	204	913-0866-120	CAPACITOR, 100pF				C10, 167, 173
4	203	913-0865-970	CAPACITOR, 150pF				C46-48, 51
13	202	913-0865-760	CAPACITOR, 470pF				C36, 42, 49, 61, 88, 89, 95, 98, 99, 125, 129-131
1	201	913-0865-640	CAPACITOR, 470pF				C5000
24	200	913-0865-620	CAPACITOR, 0.1uF				C5-8, 12, 23, 25, 64, 105, 108, 109, 132, 137, 166, 181, 601-603, 613, 1030, 1032, 1040-1042
1	199	913-0865-540	CAPACITOR, 0.022uF				C14
9	198	913-0865-500	CAPACITOR, 0.01uF				C1, 2, 9, 11, 60, 1002, 1020, 1052, 1053
1	197	913-0865-450	CAPACITOR, 3900pF				C1031
1	196	913-0865-340	CAPACITOR, 470pF				C1001
3	195	913-0865-330	CAPACITOR, 390pF				C172, 174, 1037
1	194	913-0865-250	CAPACITOR, 82pF				C15
1	193	913-0863-050	CAPACITOR, 0.1uF				C81
1	192	860-2518-050	CONNECTOR, RECT, AUDIO, JACK				J8
1	190	853-6113-070	INDUCTOR, FIXED, 420uH, 10%		22		L101
2	189	853-6082-010	INDUCTOR, TOROID, 592uH		23		L2, 3
2	188	849-0007-210	INDUCTOR, 5.6uH				L1001, 1002
5	187	844-2005-020	SEMICONDUCTOR DEVICE, DIODE				CR3, 4, 38, 40, 110
2	186	844-1200-030	SEMICONDUCTOR, RECTIFIER				CR5, 6
2	185	844-0134-010	DIODE, RECTIFIER				CR10, 19
1	184	844-0103-060	SEMICON DVC, DIODE				VR105
1	183	844-0103-030	SEMICON DVC, DIODE				VR4
1	182	844-0087-020	SEMICON DVC, DIODE				CR18
2	181	844-0068-010	SEMICON DVC, DIODE				U1001, 1015
2	180	844-0023-010	DIODE, RECTIFIER				CR100, 101
1	179	843-0007-020	XSTR, FIELD EFFECT				Q602
2	178	835-2051-040	IC, OPTOCOUPLER				U18, 103
1	177	835-1400-010	ANALOG IC, COMPUTATIONAL				U1011
1	176	835-0732-060	ANALOG IC, SWITCHING REGULATOR				U6
3	175	835-0370-020	IC, LINEAR				U22, 101, 102
3	174	835-0365-010	ANALOG IC, OPERATIONAL AMPLIFIER				U1003, 1007, 1012
1	173	835-0253-040	IC, CURRENT-MODE PWM				U1010
1	172	835-0196-010	OPTOCOUPLER - TRANSISTOR OUTPUT				U3
7	171	835-0006-020	IC, REGULATOR				U2, 5, 12-14, 100, 607
2	170	834-5034-020	CAPACITOR, 100pF				C66, 67
1	169	834-5019-010	CAPACITOR, 0.01uF				C114
1	168	834-5008-620	CAPACITOR, 1000pF				C1044
3	167	834-5008-610	CAPACITOR, 470pF				C110, 136, 138
1	166	834-5008-530	CAPACITOR, 680pF				C1006
4	165	834-5008-370	CAPACITOR, 1000pF				C113, 142, 176, 609
1	164	834-5008-250	CAPACITOR, 100pF				C1026
2	163	834-0524-190	CAPACITOR, FIXED, 560UF, 300V				C27, 144

ROCKWELL COLLINS, INC.--PROPRIETARY INFORMATION  
 COPYRIGHT 2011 ROCKWELL COLLINS, INC. ALL RIGHTS RESERVED

SIZE <b>D</b>	CAGEC OEFDO	DWG NO 828-2035-002	REV C
SCALE NONE	SHEET 5		

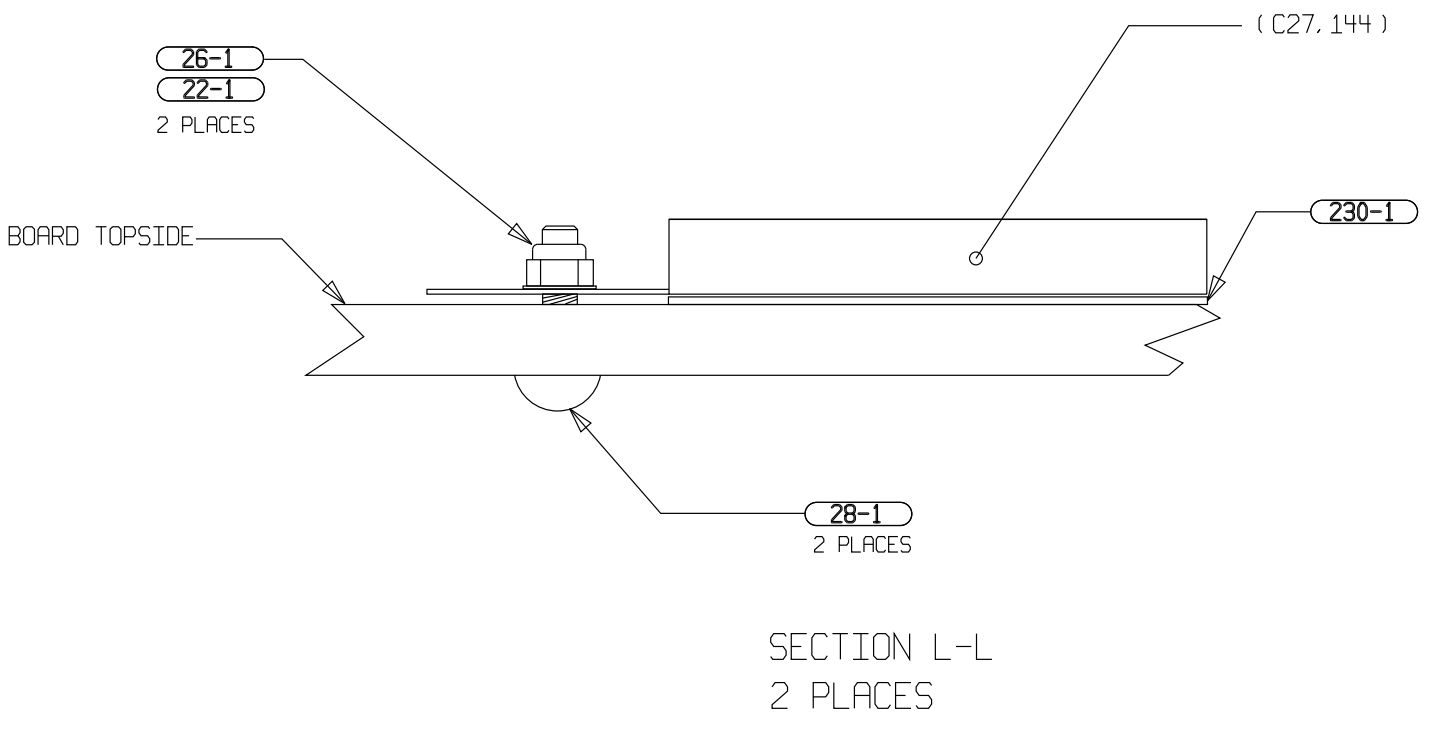
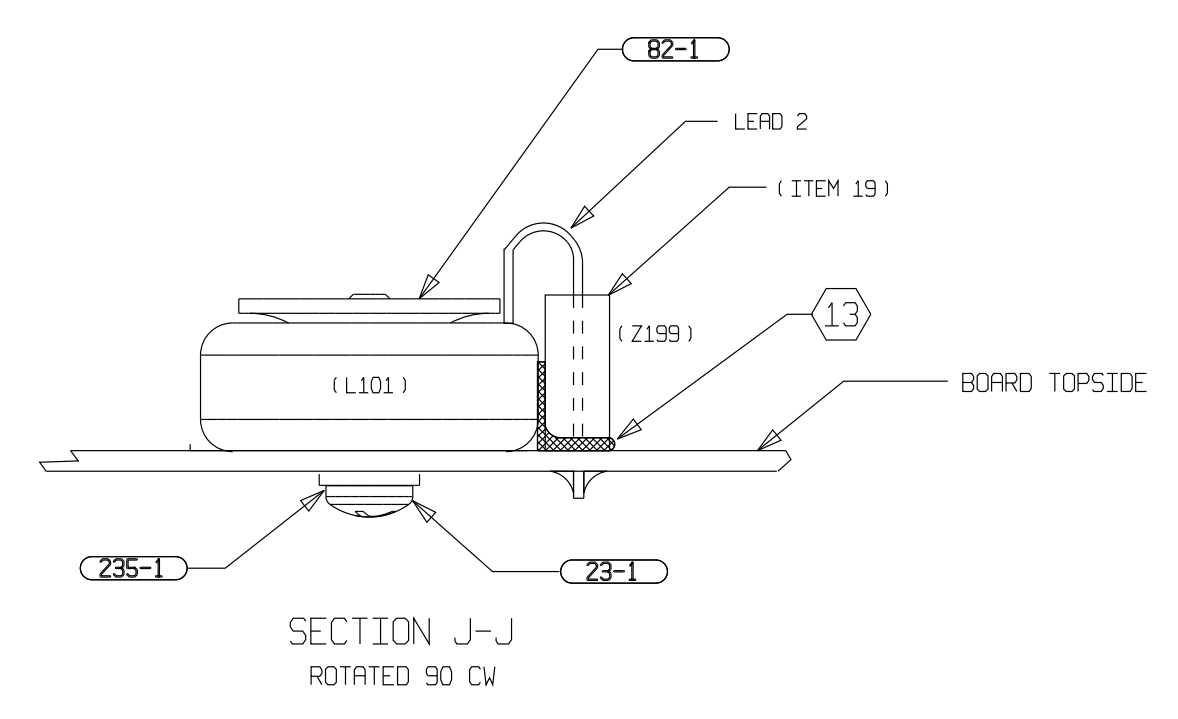
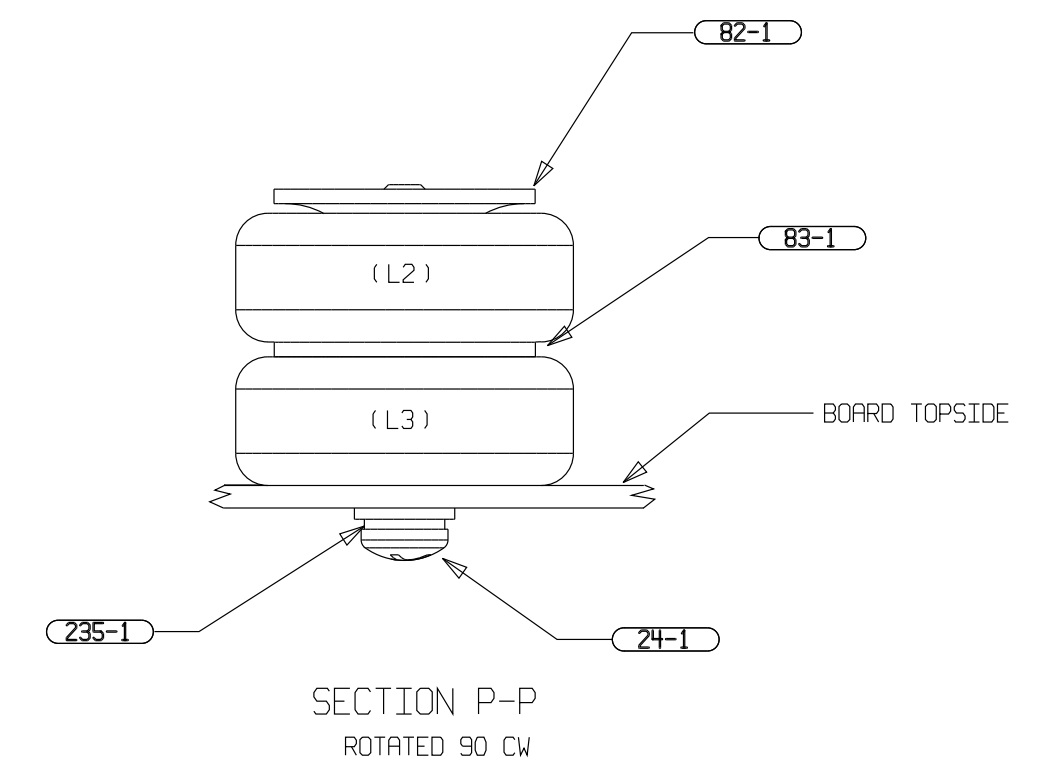
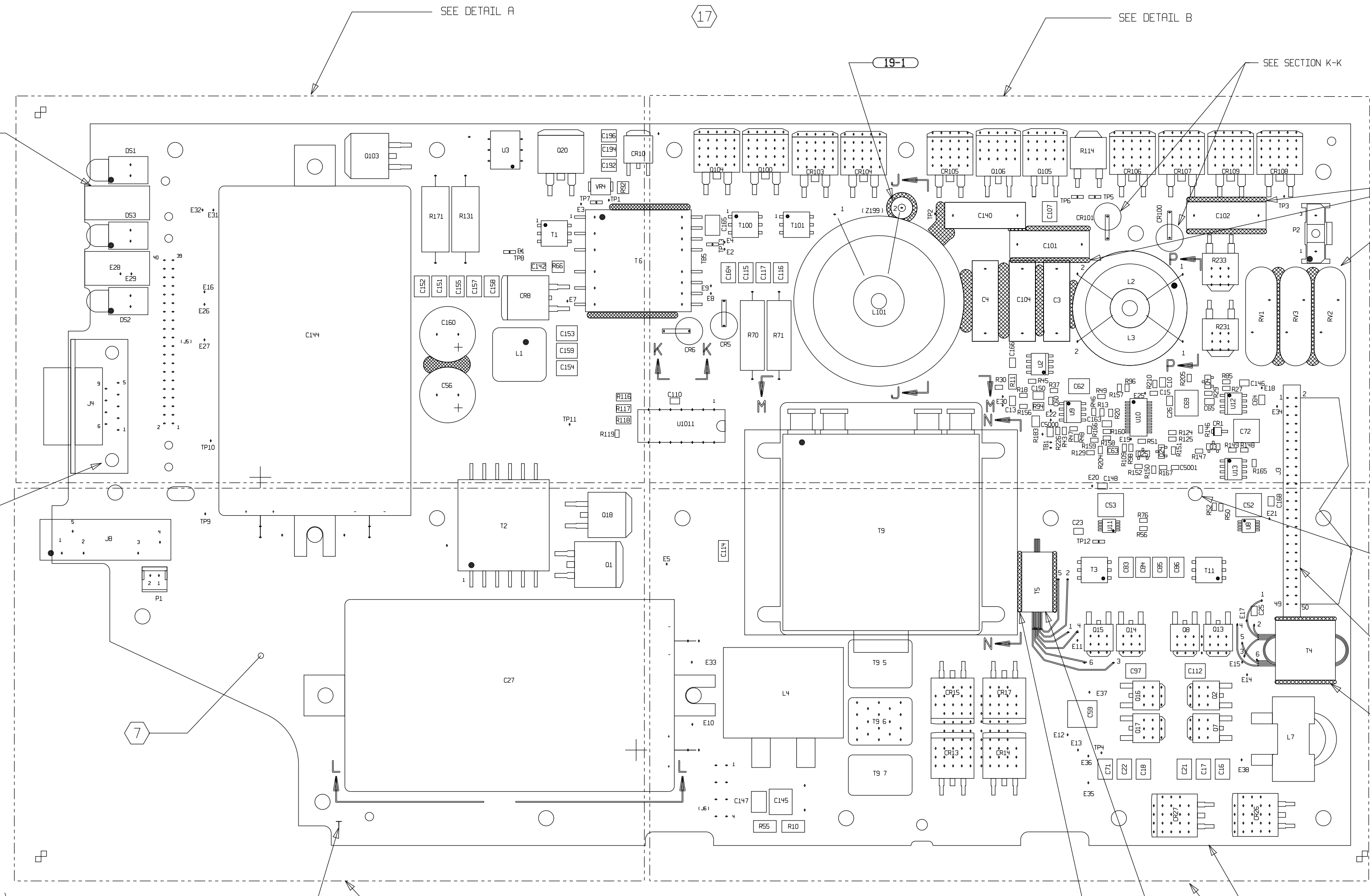
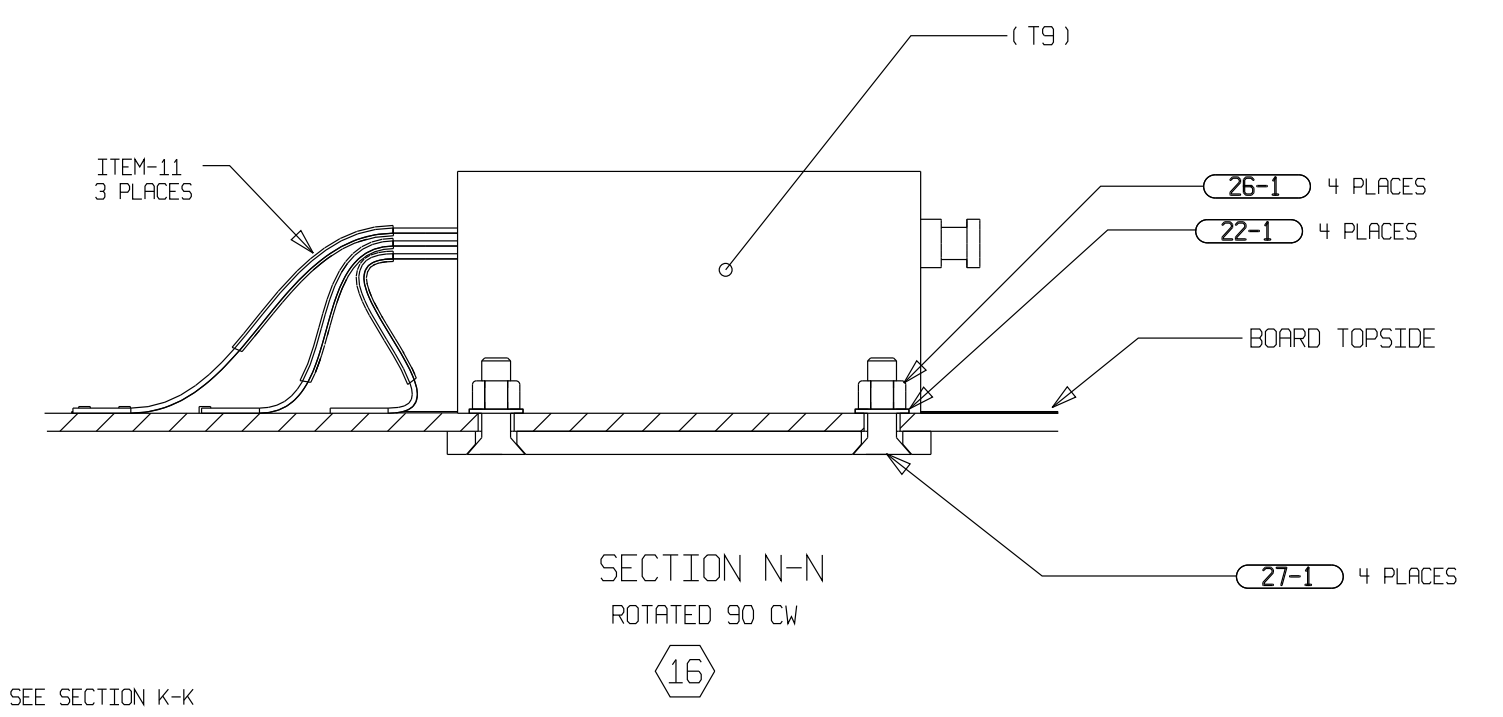
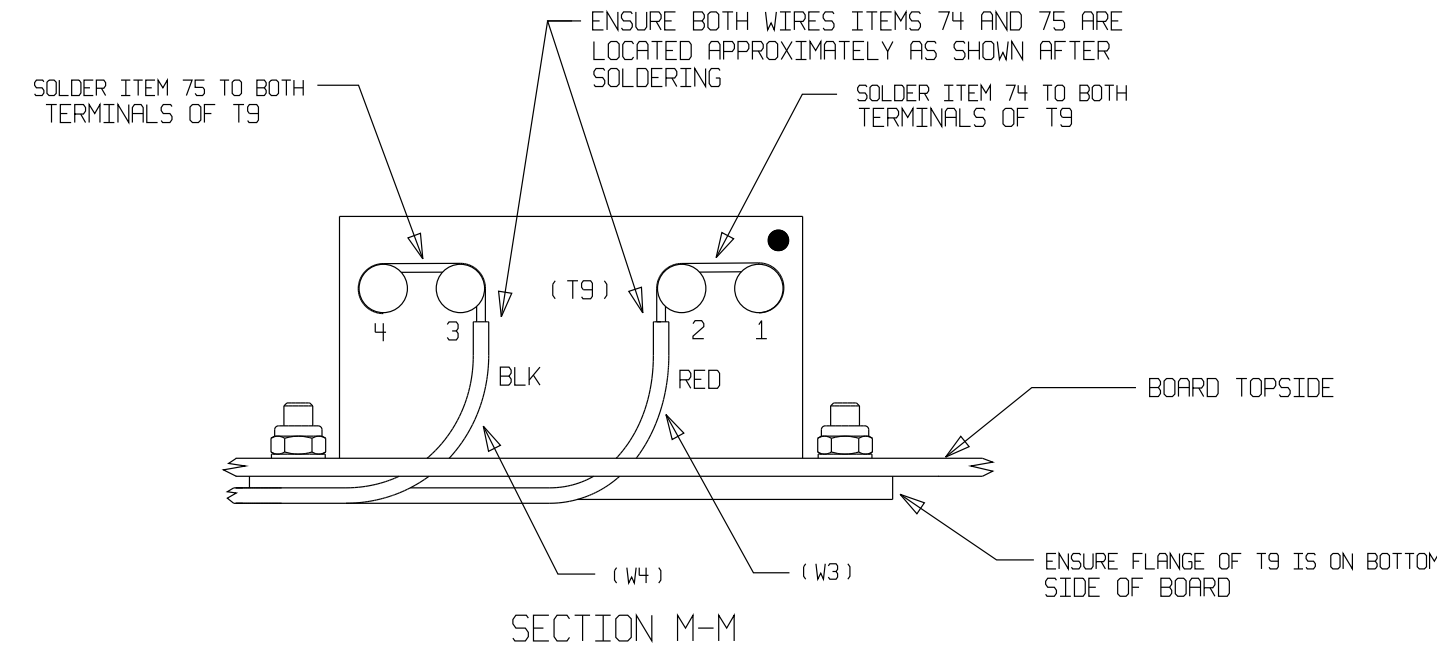
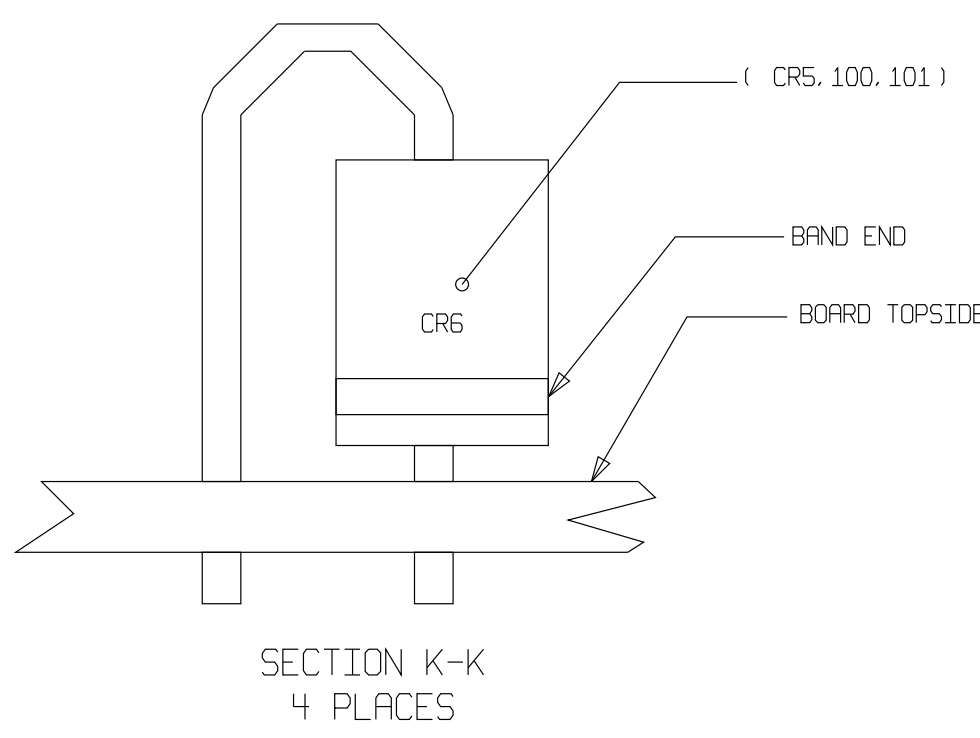
2011-02-20 12:28:40 CR5000 828-2035-002 C hmcarter

QTY	ITEM NO	PART OR IDENTIFYING NO	NOMENCLATURE OR DESCRIPTION	DOCUMENT NO	CAGEC	NOTES	REF DESIGNATOR
			PARTS LIST				
	REF	237	523-0780737	RC MODIFICATION STD MANUAL		5	
1	236	913-3670-140	CAPACITOR, 1500pF				C135
2	235	310-0282-000	WASHER, LOCK				
1	234	M24308/23-25	CONNECTOR, ELECTRICAL				J4
1	233	983-9703-004	PAD, THERMALLY CONDUCTIVE			24	
4	232	983-9703-005	PAD, THERMALLY CONDUCTIVE			24	
1	231	983-9395-010	RIBBON CABLE ASSEMBLY				
2	230	983-4309-029	INSULATOR, CAPACITOR				
2	229	933-0308-060	CAPACITOR, FIXED, .1uF, 630V			13	C101, 102
4	228	933-0308-010	CAPACITOR, 0.22uF			13	C3, 4, 104, 140
3	227	913-3667-590	CAPACITOR, 680pF				C63, 150, 177
1	226	913-3218-010	CAPACITOR, FIXED, .47uF, 200V				C59
29	225	913-3213-010	CAPACITOR, FIXED, .1UF, 600V				C16-18, 21, 22, 71, 83-87, 93, 97, 107, 112, 115-117, 119-124, 161, 162, 164, 165, 600
13	224	913-3086-040	CAPACITOR, FIXED, 10UF, 25V				C74-80, 192-197
2	223	913-3084-660	CAPACITOR, FIXED, 6.8UF, 50V				C19, 20
1	222	913-3084-290	CAPACITOR, FIXED, 4.7uF, 100V				C145
6	221	913-3084-120	CAPACITOR, FIXED, 0.1UF, 50V				C26, 65, 146, 148, 163, 168
2	220	913-3072-040	CAPACITOR, 0.1uF				C82, 156
2	219	913-3070-180	CAPACITOR, 0.01uF				C24, 100
2	218	913-3070-140	CAPACITOR, 4700pF				C29, 30
3	217	913-3070-060	CAPACITOR, 1000pF				C38, 180, 1007
1	216	913-3067-090	CAPACITOR, 0.033uF				C149
7	215	913-3067-030	CAPACITOR, 0.01uF				C33, 41, 68, 90, 96, 118, 5001
4	214	913-3059-250	CAPACITOR, 100pF				C54, 55, 139, 605
10	213	913-3056-180	CAPACITOR, 6.8uF				C40, 50, 151-155, 157-159
2	212	913-3056-120	CAPACITOR, 10uF				C1012, 1013
1	211	913-3056-050	CAPACITOR, 1uF				C147
1	210	913-3056-040	CAPACITOR, 15uF				C111
2	209	913-3056-010	CAPACITOR, 2.2uF				C1014, 1021
4	208	913-0866-780	CAPACITOR, FIXED, 10UF, 50V				C52, 53, 69, 72
4	207	913-0866-710	CAPACITOR, 1uF				C32, 106, 175, 608

ROCKWELL COLLINS, INC.--PROPRIETARY INFORMATION  
 COPYRIGHT 2011 ROCKWELL COLLINS, INC. ALL RIGHTS RESERVED

SIZE <b>D</b>	CAGEC OEFDO	DWG NO 828-2035-002	REV C
SCALE NONE	SHEET 6		

2011-02-20 12:20:05 CR5000 828-2035-002 C hmcarter

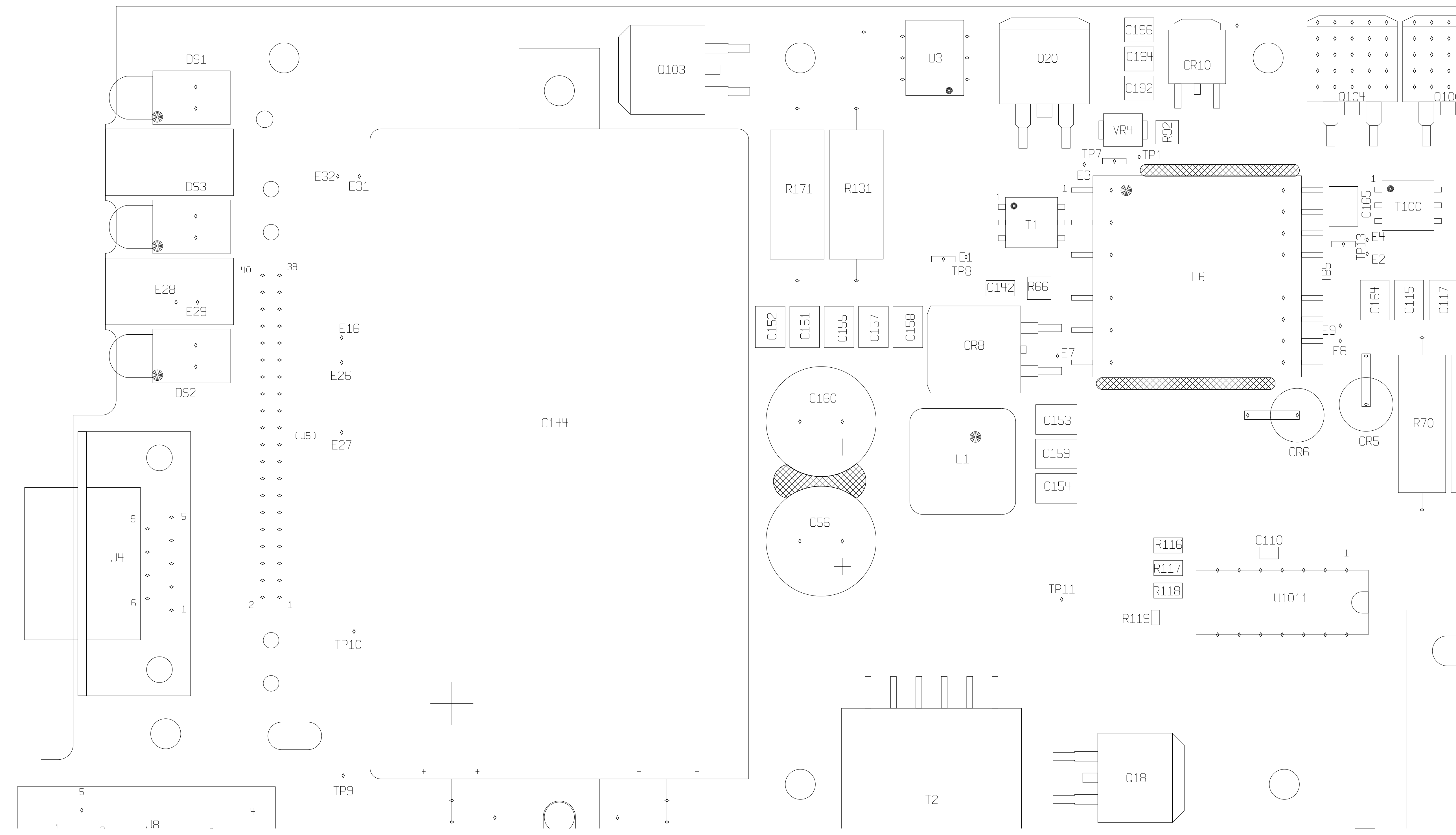


ROCKWELL COLLINS, INC.--PROPRIETARY INFORMATION  
COPYRIGHT 2011 ROCKWELL COLLINS, INC. ALL RIGHTS RESERVED

COMPONENTS TOP

SIZE	CAGEC	DWG NO	REV
D	0EFD0	828-2035-002	C
SCALE	NONE	SHEET	7

2011-02-20 12:20:05 CR5000 828-2035-002 C hmcarter



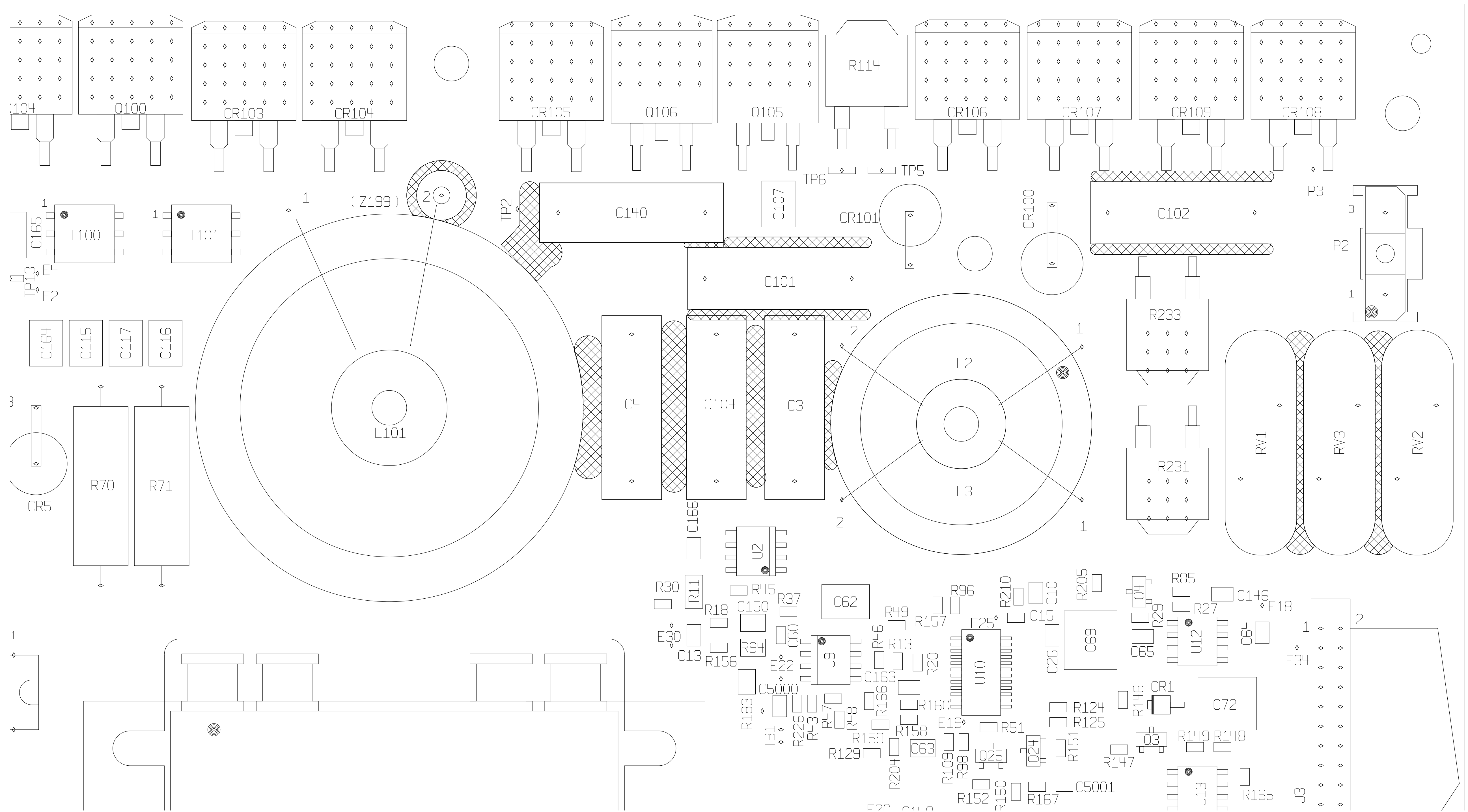
DETAIL A

ROCKWELL COLLINS, INC.--PROPRIETARY INFORMATION  
 COPYRIGHT 2011 ROCKWELL COLLINS, INC. ALL RIGHTS RESERVED

SIZE <b>D</b>	CAGEC OEFD0	DWG NO 828-2035-002	REV C
SCALE NONE			SHEET 8



2011-02-20 12:20:05 CR5000 828-2035-002 C hmcarter

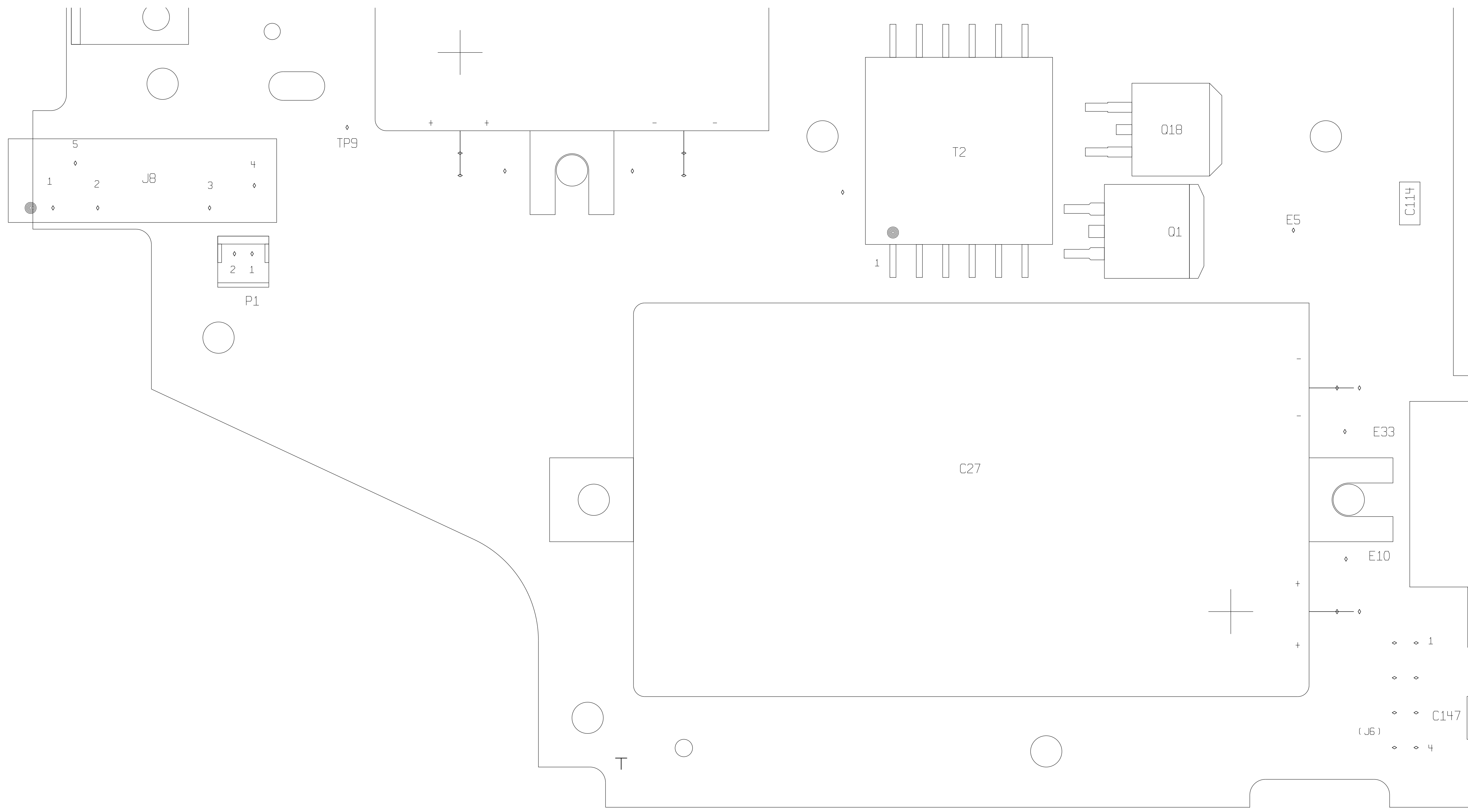


DETAIL B

ROCKWELL COLLINS, INC.--PROPRIETARY INFORMATION  
 COPYRIGHT 2011 ROCKWELL COLLINS, INC. ALL RIGHTS RESERVED

SIZE <b>D</b>	CAGEC OEFD0	DWG NO 828-2035-002	REV C
SCALE NONE	SHEET 9		

2011-02-20 12:20:05 CR5000 828-2035-002 C hmcarter

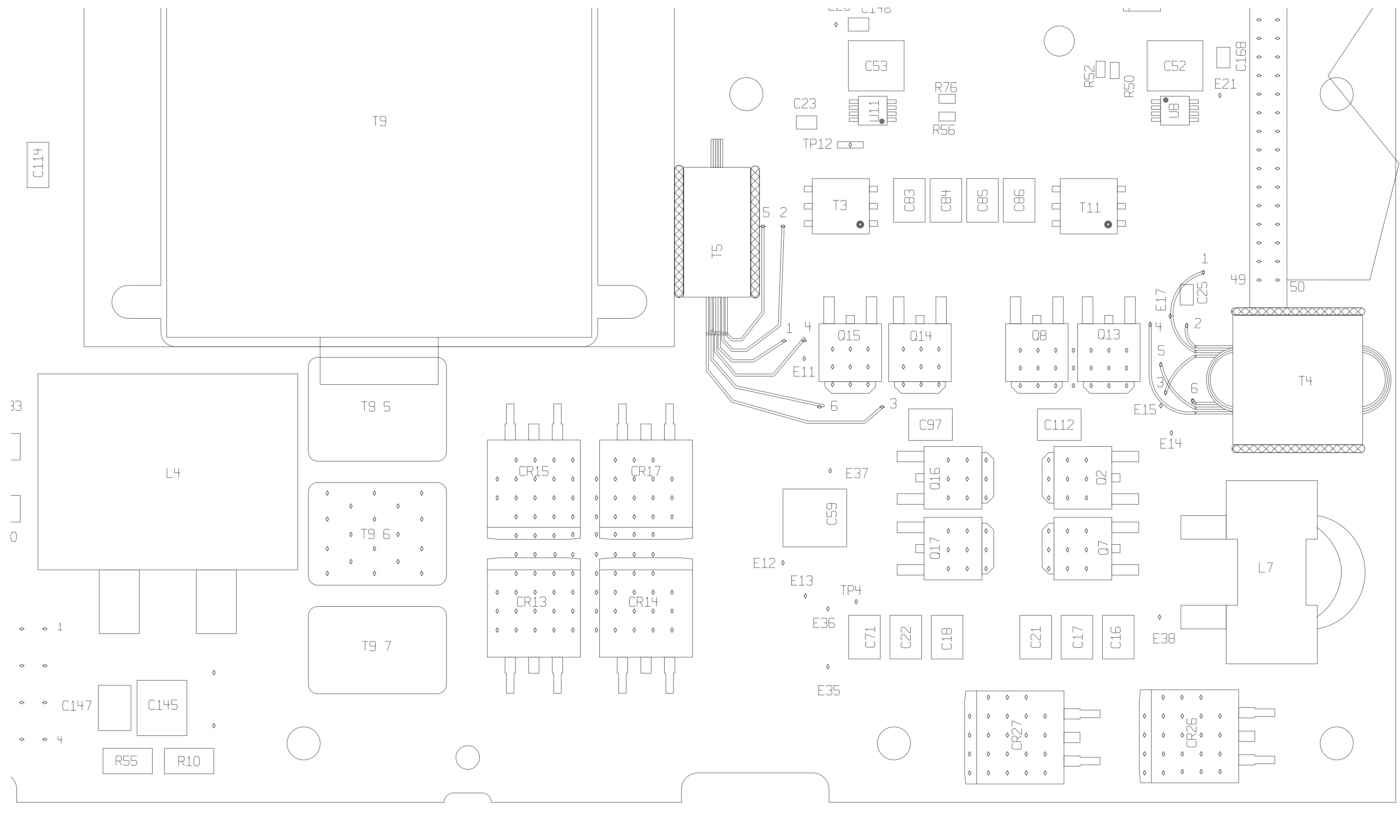


DETAIL C

ROCKWELL COLLINS, INC.--PROPRIETARY INFORMATION  
 COPYRIGHT 2011 ROCKWELL COLLINS, INC. ALL RIGHTS RESERVED

SIZE <b>D</b>	CAGEC 0EFDO	DWG NO 828-2035-002	REV C
SCALE NONE	SHEET 10		

2011-02-20 12:20:05 CR5000 828-2035-002 C hmcarter

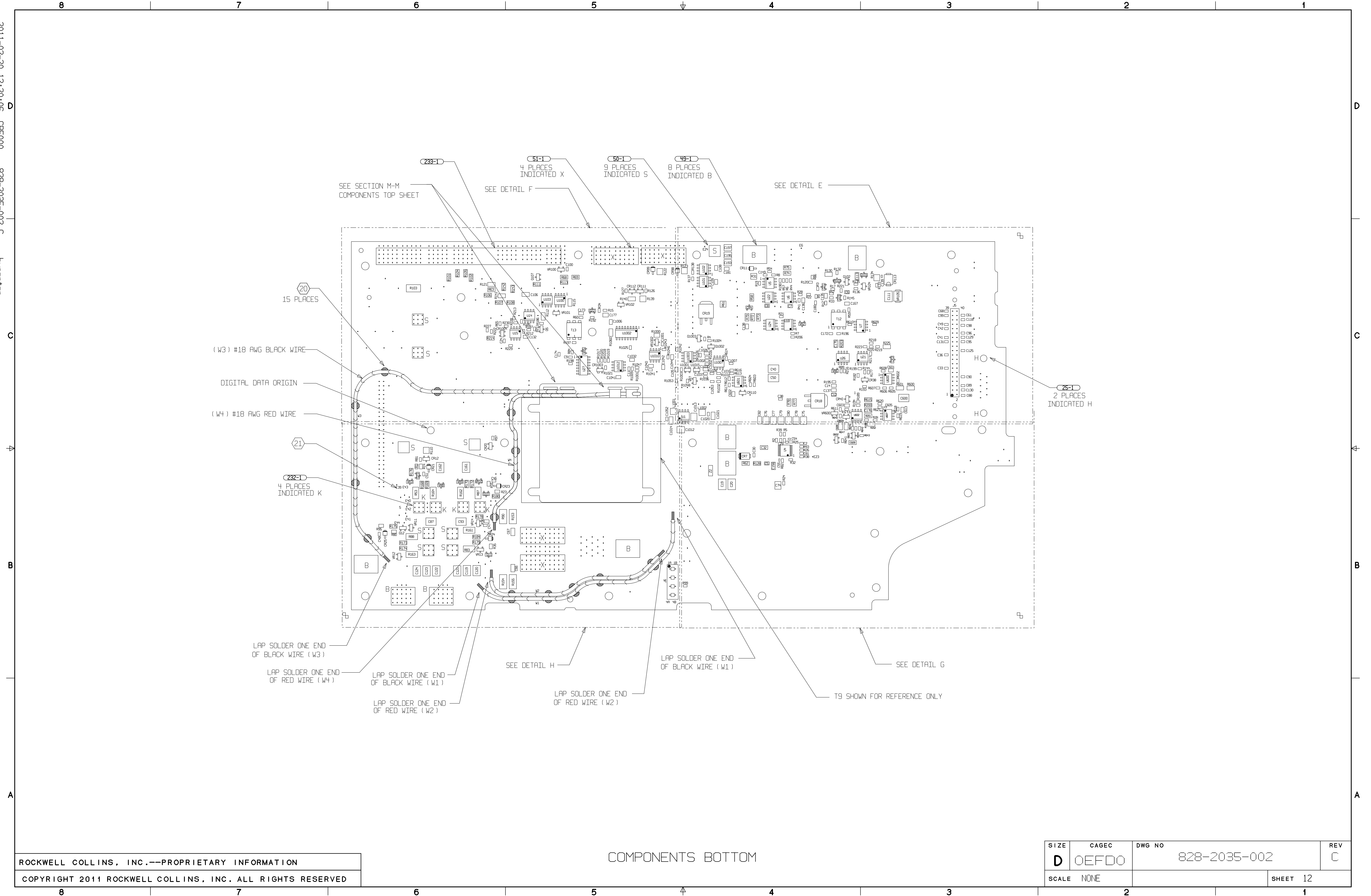


DETAIL D

ROCKWELL COLLINS, INC.--PROPRIETARY INFORMATION  
 COPYRIGHT 2011 ROCKWELL COLLINS, INC. ALL RIGHTS RESERVED

SIZE <b>D</b>	CAGEC OEFD0	DWG NO 828-2035-002	REV C
SCALE NONE		SHEET 11	

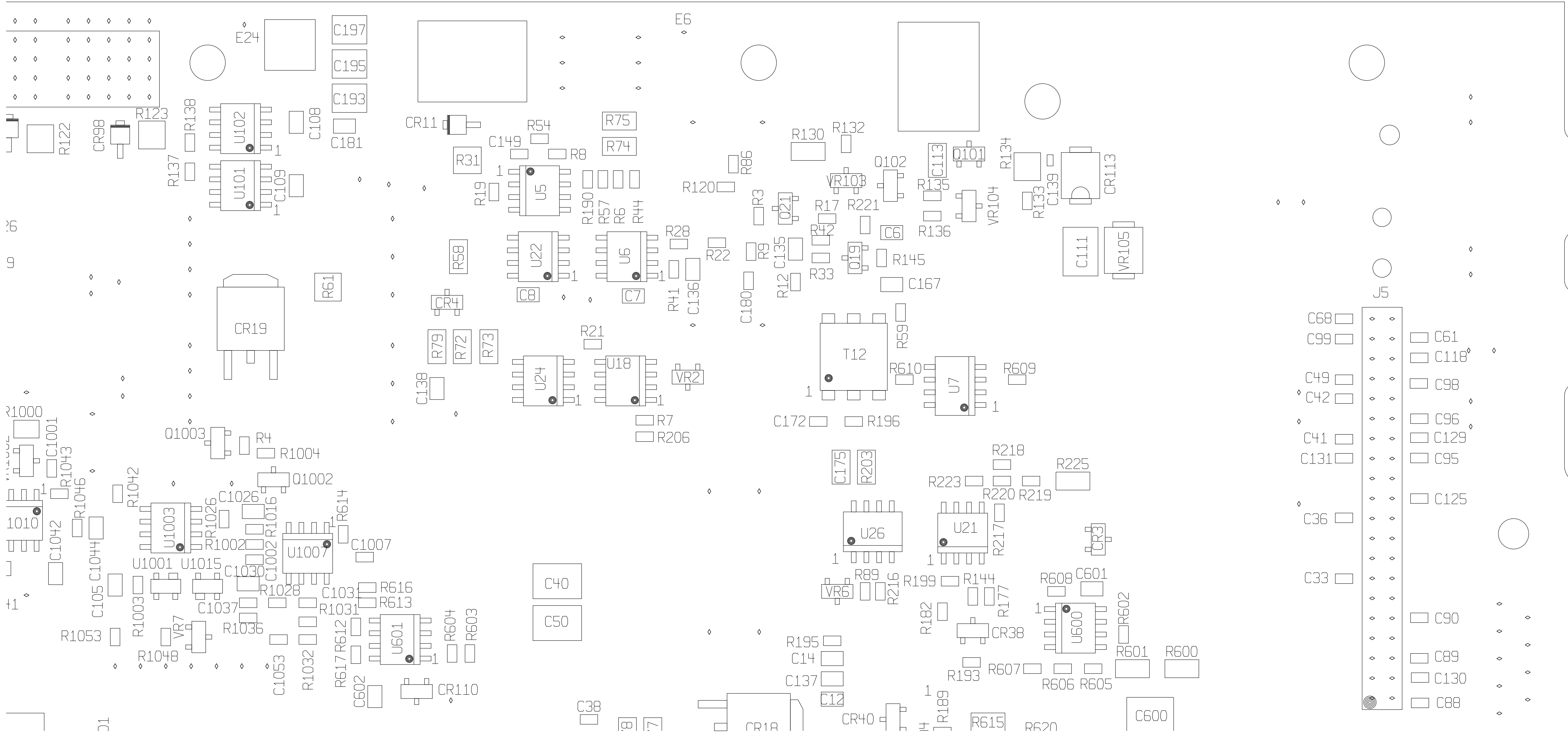
2011-02-20 12:20:05 CR5000 828-2035-002 C hmcarter



ROCKWELL COLLINS, INC.--PROPRIETARY INFORMATION  
 COPYRIGHT 2011 ROCKWELL COLLINS, INC. ALL RIGHTS RESERVED

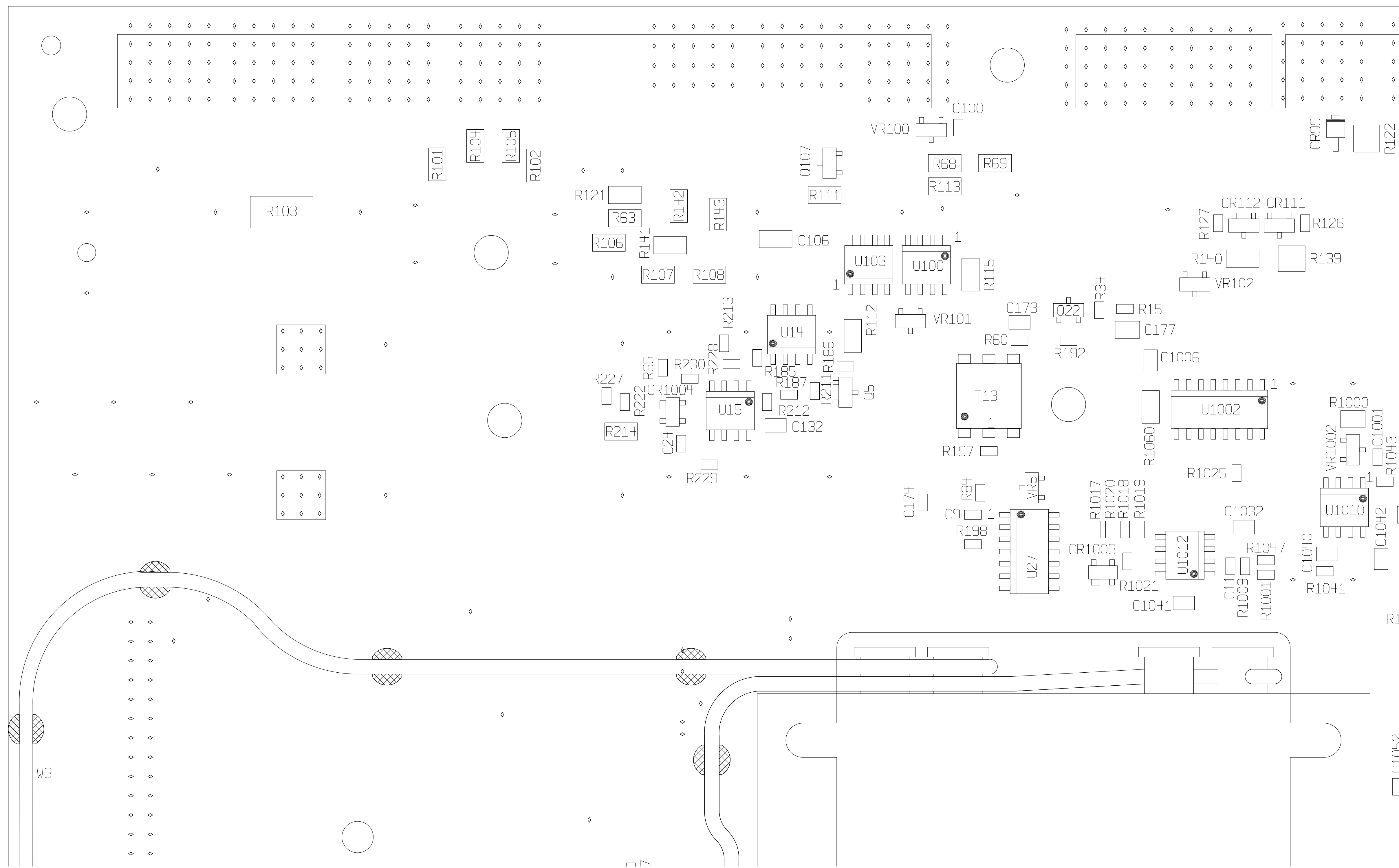
COMPONENTS BOTTOM

SIZE <b>D</b>	CAGEC OEFD0	DWG NO 828-2035-002	REV C
SCALE NONE	SHEET 12		



C68	◊ ◊	C61
C99	◊ ◊	C118
C49	◊ ◊	C98
C42	◊ ◊	C96
C41	◊ ◊	C129
C131	◊ ◊	C95
	◊ ◊	C125
C36	◊ ◊	
C33	◊ ◊	C90
	◊ ◊	C89
	◊ ◊	C130
	◊ ◊	C88

2011-02-20 12:20:05 CR5000 828-2035-002 C hmcarter

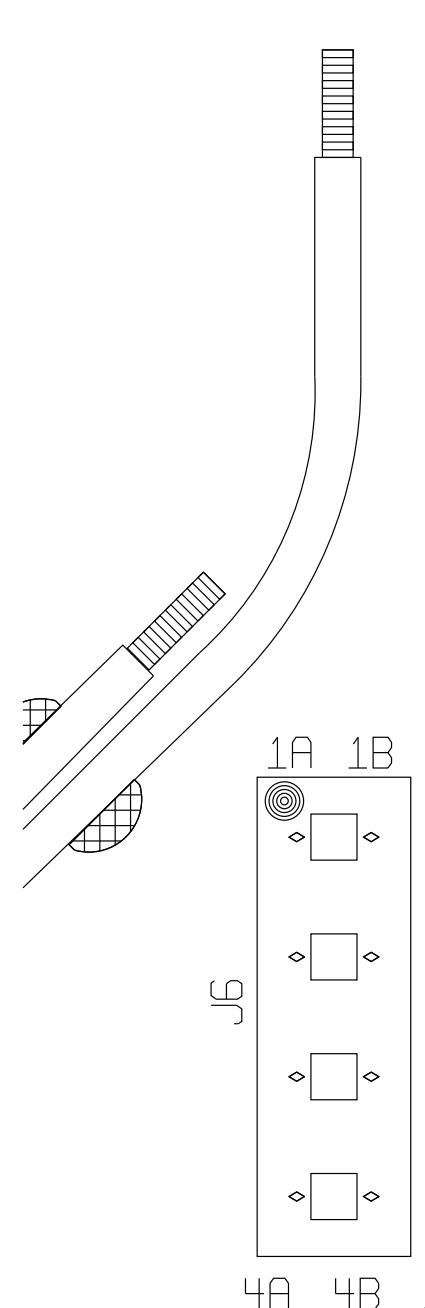
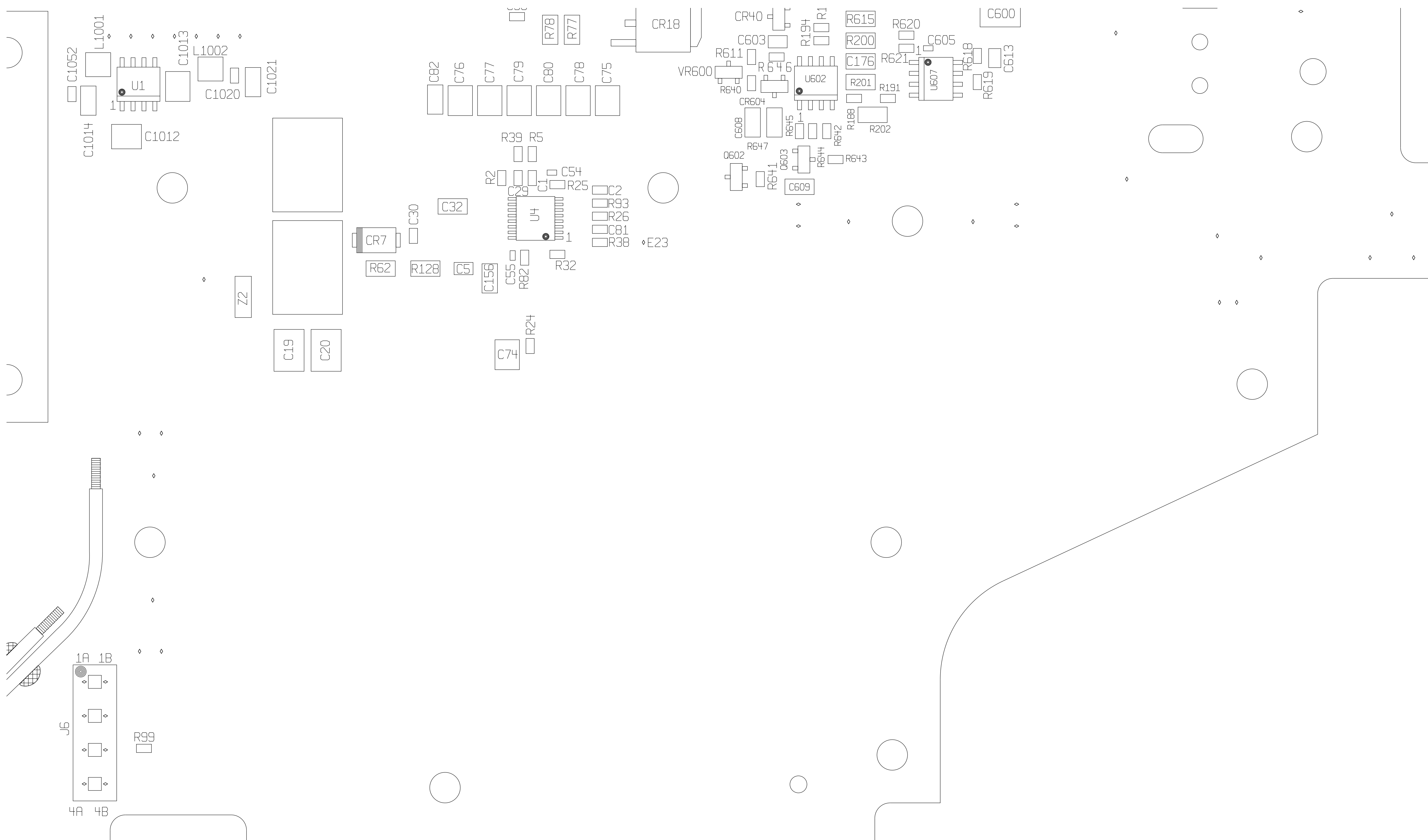


DETAIL F

ROCKWELL COLLINS, INC.--PROPRIETARY INFORMATION  
 COPYRIGHT 2011 ROCKWELL COLLINS, INC. ALL RIGHTS RESERVED

SIZE <b>D</b>	CAGEC 0EFD0	DWG NO 828-2035-002	REV C
SCALE NONE		SHEET 14	

2011-02-20 12:20:05 CR5000 828-2035-002 C hpcar-ter

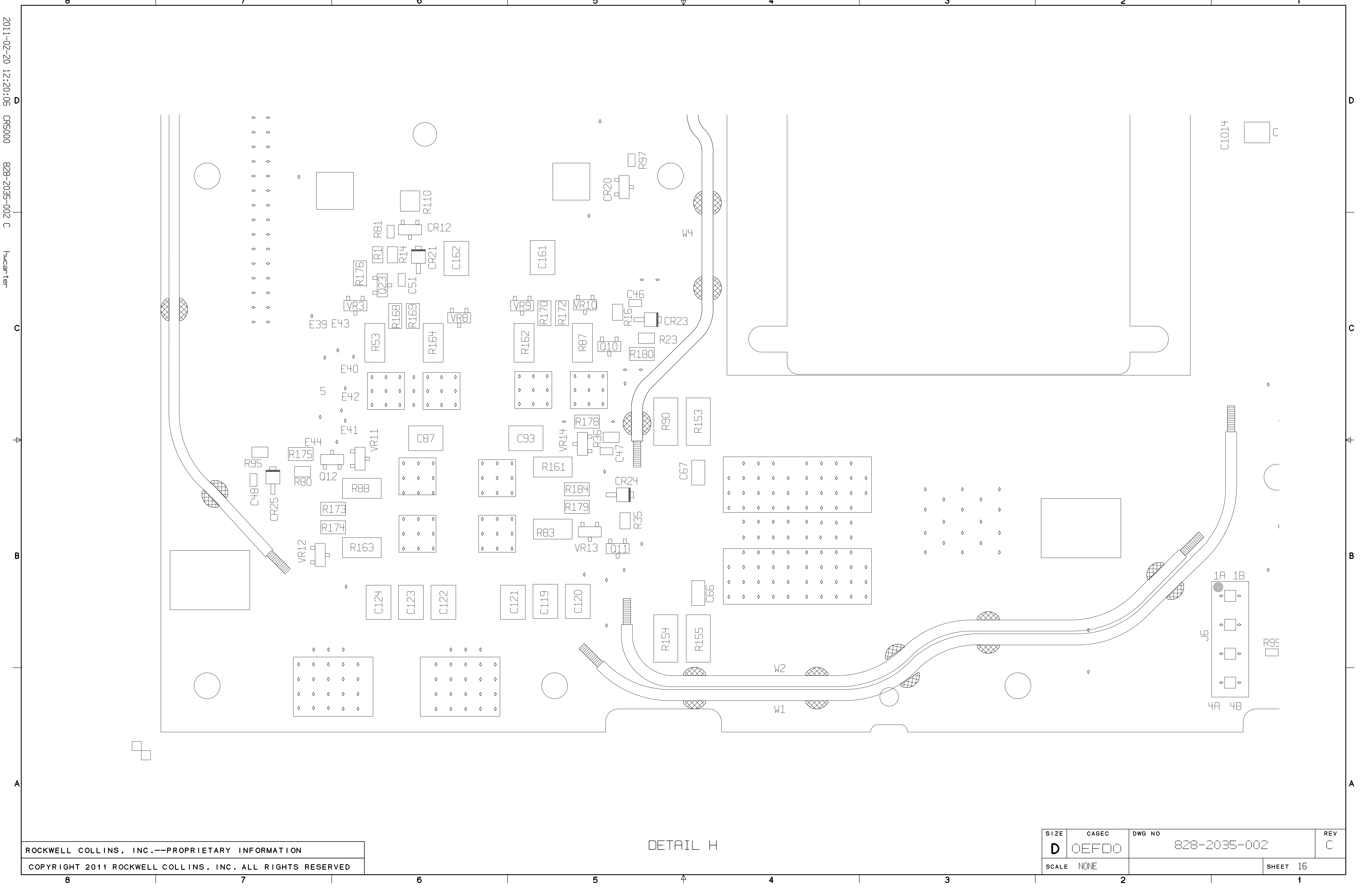


DETAIL G

ROCKWELL COLLINS, INC.--PROPRIETARY INFORMATION  
 COPYRIGHT 2011 ROCKWELL COLLINS, INC. ALL RIGHTS RESERVED

SIZE <b>D</b>	CAGEC 0EFD0	DWG NO 828-2035-002	REV C
SCALE NONE		SHEET 15	

2011-02-20 12:20:05 CR5000 828-2035-002 C hmcarter



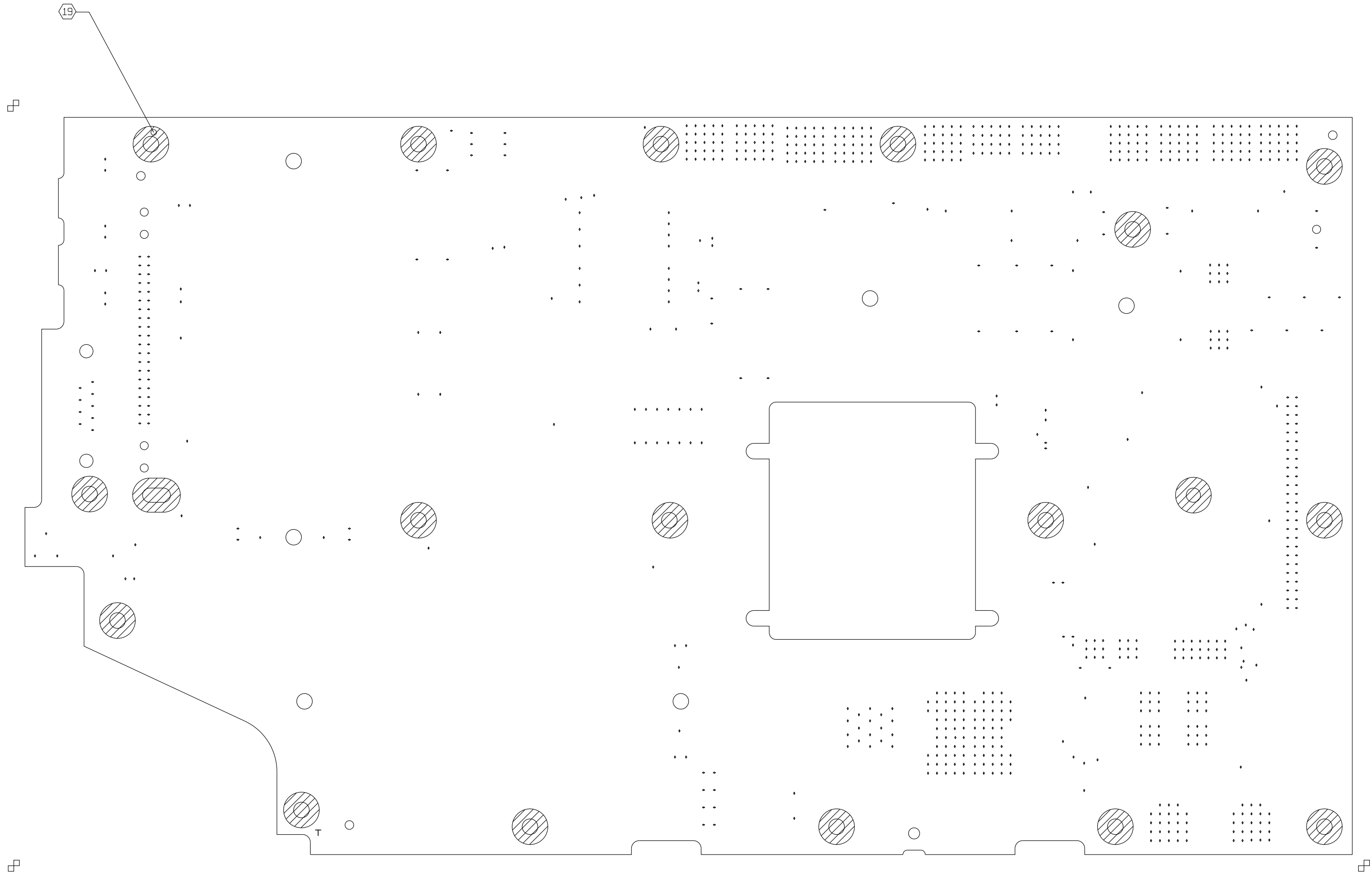
DETAIL H

ROCKWELL COLLINS, INC.--PROPRIETARY INFORMATION  
 COPYRIGHT 2011 ROCKWELL COLLINS, INC. ALL RIGHTS RESERVED

SIZE <b>D</b>	CAGEC OEFD0	DWG NO 828-2035-002	REV C
SCALE NONE	SHEET 16		



2011-02-20 12:20:05 CR5000 828-2035-002 C hmc@ar.ter

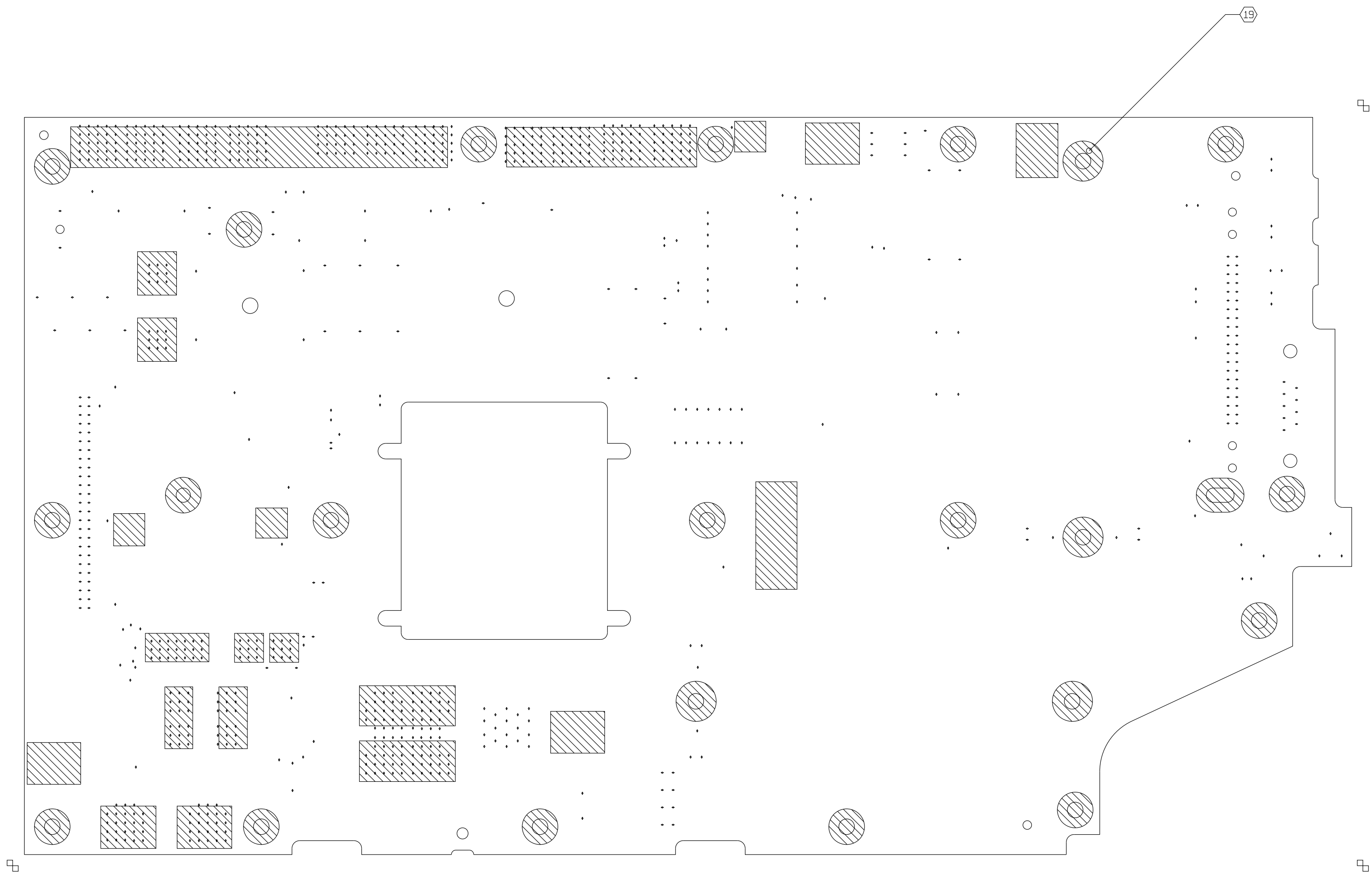


ROCKWELL COLLINS, INC.--PROPRIETARY INFORMATION  
 COPYRIGHT 2011 ROCKWELL COLLINS, INC. ALL RIGHTS RESERVED

CONFORMAL COAT TOP

SIZE	CAGEC	DWG NO	REV
D	0EFDO	828-2035-002	C
SCALE	NONE	SHEET 17	

2011-02-20 12:20:05 CR5000 828-2035-002 C hmc@ar.ter



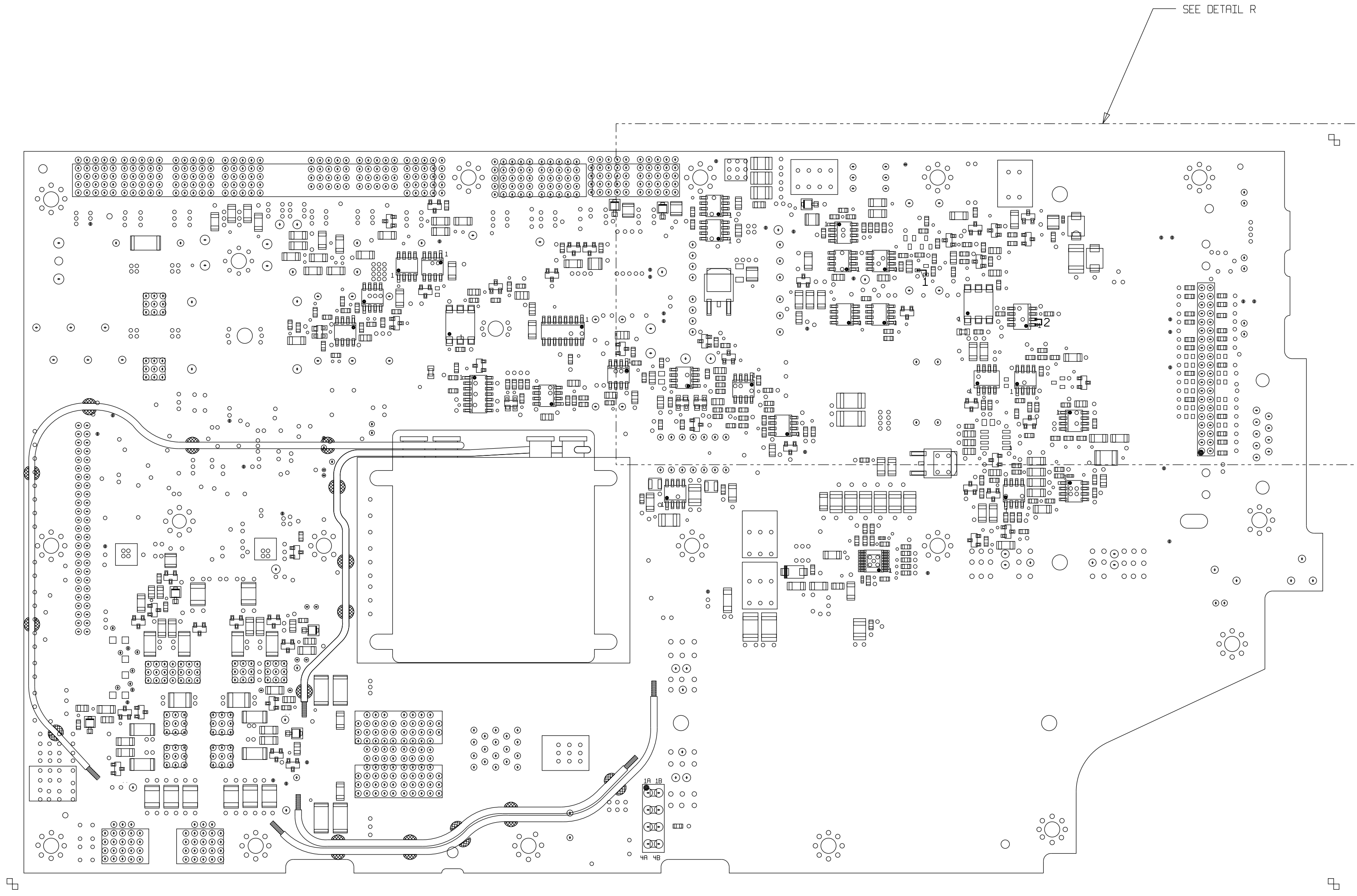
CONFORMAL COAT BOTTOM

ROCKWELL COLLINS, INC.--PROPRIETARY INFORMATION  
 COPYRIGHT 2011 ROCKWELL COLLINS, INC. ALL RIGHTS RESERVED

SIZE	CAGEC	DWG NO	REV
D	0EFDO	828-2035-002	C
SCALE	NONE	SHEET 18	

ROUTE WIRES APPROXIMATELY AS SHOWN UNLESS SPECIFIED BY NOTE.  
 USE 30 GAUGE WIRE UNLESS SPECIFIED BY CHART.

MODIFICATION WIRE USAGE CHART				
NO.	CONNECTS	TOP/BOT	GAUGE	NOTES
1	PRD TO PRD	BOT		
2	U7-1 TO U7-2	BOT		



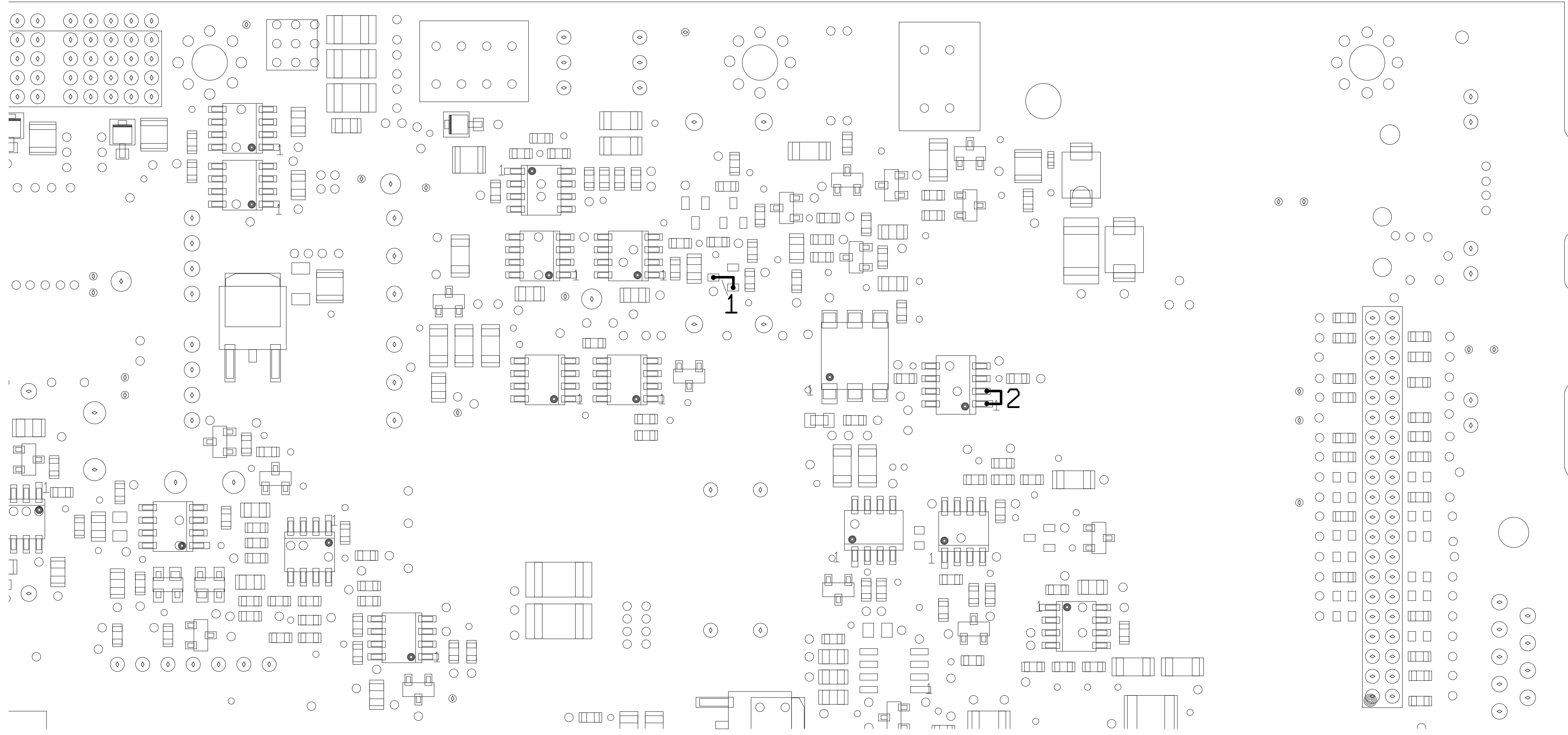
ROCKWELL COLLINS, INC.--PROPRIETARY INFORMATION  
 COPYRIGHT 2011 ROCKWELL COLLINS, INC. ALL RIGHTS RESERVED

MODIFICATION WIRES BOTTOM VIEW

SIZE <b>D</b>	CAGEC OEFD0	DWG NO 828-2035-002	REV C
SCALE NONE	SHEET 19		

2011-02-20 12:20:05 CR5000  
 828-2035-002 C  
 hmcpar-ter

2011-02-20 12:20:05 CR5000 828-2035-002 C hycar-ter



DETAIL R

ROCKWELL COLLINS, INC.--PROPRIETARY INFORMATION  
COPYRIGHT 2011 ROCKWELL COLLINS, INC. ALL RIGHTS RESERVED

SIZE <b>D</b>	CAGEC OEFDO	DWG NO 828-2035-002	REV C
SCALE NONE	SHEET 20		

8 7 6 5 4 3 2 1

D C B A

D C B A