

2011-06-03 13:10:34 CR5000 828-2034-002 R skurthen

REVISION HISTORY			
REV	DESCRIPTION	DATE	APPROVED
A	ECO-0319511	2011-06-03	K.H.

- NOTES:
- "T" DESIGNATES CIRCUIT CARD ASSEMBLY TOP SURFACE.
 - REFERENCE DESIGNATORS USED IN LIEU OF ITEM NUMBERS.
 - PARENTHETICAL INFORMATION IS FOR REFERENCE ONLY.
 - ITEM IDENTIFICATION BALLOONS DENOTE ITEM NUMBER OR ITEM NUMBER - QUANTITY.
 - UNLESS OTHERWISE SPECIFIED, ASSEMBLY SHALL BE IN ACCORDANCE WITH ITEM 4.
 - Z MAX DIMENSIONS, EXCLUDING CONNECTORS, PIN FIELDS, AND MECHANICAL HARDWARE:
 Z TOP SHALL BE .337
 Z BOTTOM SHALL BE .215
 MAXIMUM LEAD PROTRUSION SHALL BE .090
 - APPLY IDENTIFICATION MARKING IN APPROXIMATE LOCATION SHOWN, IN ACCORDANCE WITH ITEM 5, TYPE 2, CLASS II.
 - CAUTION: THIS ASSEMBLY CONTAINS ELECTROSTATIC DISCHARGE SENSITIVE DEVICES, AND/OR ASSEMBLIES IDENTIFIED AS CLASS 1 IN ACCORDANCE WITH MIL-STD-1686. HANDLE IN ACCORDANCE WITH ITEM 3.
 ESD SYMBOL APPLIED BY PRINTED WIRING BOARD FABRICATION PROCESS.
 - THIS CIRCUIT CARD ASSEMBLY WILL BE TESTED AT A HIGHER LEVEL.
 - ITEM 6 MAY BE UTILIZED ON THIS ASSEMBLY.
 - DIMENSIONING AND TOLERANCING SHALL BE INTERPRETED IN ACCORDANCE WITH ASME Y14.5M-1994. DIMENSIONS AND TOLERANCES ARE IN INCHES.
 - ABBREVIATIONS AND ACRONYMS NOT IN ACCORDANCE WITH ASME Y14.38:
 HIGH FREQUENCY SYSTEM (HFS)
 - THE BODY OF ITEM 45 SHALL BE SOLDERED TO ITEM 1.
 - ALL E, TP1-TP15, P7 AND P8 DESIGNATORS ARE SHOWN FOR REFERENCE ONLY.
 - CONFORMAL COAT ASSEMBLY USING ITEM 7 IN ACCORDANCE WITH ITEM 8.
 HATCHED AREAS INDICATED SHALL BE FREE OF CONFORMAL COATING, AND SHALL APPROXIMATE SOLDER MASK CLEARANCE ON FAB BOARD.

CAD MAINTAINED. CHANGES SHALL BE INCORPORATED BY THE DESIGN ACTIVITY

PARTS LIST CONTINUED ON THE FOLLOWING SHEET

QTY	ITEM NO	PART OR IDENTIFYING NO	NOMENCLATURE OR DESCRIPTION	DOCUMENT NO	CAGEC	NOTES	REF DESIGNATOR
2	34	351-3152-400	LOGIC IC, GATE				U34,60
1	33	351-3152-390	LOGIC IC, GATE				U7
4	32	351-3152-380	LOGIC IC, GATE				U4,56,58,79
1	31	351-3152-280	LOGIC IC, GATE				U43
4	30	351-3137-210	LOGIC IC, GATE				U27,47,48,86
1	29	351-3114-150	MICROPROCESSOR IC, CLOCK GENERATOR				U22
1	28	351-3114-130	LOGIC IC, CLOCK DRIVER				U96
1	27	351-3111-140	MICROPROCESSOR IC, DSP				U12
1	26	351-2987-010	ANALOG IC, POWER MANAGEMENT				U26
1	25	351-2973-010	IC, LINEAR, VOLTAGE REGULATOR				U13
1	24	351-2930-200	MICROPROCESSOR IC, MICROCONTROLLER				U1
3	23	351-2807-100	MEMORY IC, DYNAMIC RAM				U23-25
1	22	351-2804-020	IC, VOLTAGE REGULATOR				U5
1	21	351-2797-020	MEMORY IC, PRGM ROM, FLASH 3V PROM				U10
6	20	351-1278-030	ANALOG IC, COMPARATOR				U14-16, 18, 20, 21
1	19	351-0656-010	ANALOG IC, COMPARATOR				U55
1	18	351-0355-010	IC, LINEAR				U9
3	17	288-0151-050	BEAD, FERRITE				Z4-6
1	16	277-0832-020	OSCILLATOR, CRYSTAL CLOCK				G2
1	15	277-0814-070	OSCILLATOR, CRYSTAL CLOCK				G1
1	14	240-3052-220	INDUCTOR, 1MH				L4
3	13	240-2972-080	INDUCTOR, SURFACE MOUNT, 15UH				L1-3
1	12	220-0071-110	CONNECTOR, HEADER				P60
1	11	220-0071-100	CONNECTOR, HEADER				P19
5	10	184-6344-220	CAPACITOR, 150uF				C1-3, 32, 37
3	9	184-0509-090	CAPACITOR, FIXED, 150UF, 16V				C160-162
REF	8	580-5458-001	CONFORMAL COATING, ACRYLIC-BASED, APPLIC			15	
AR	7	821-0650-020	INSULATING COMPOUND, ACRYLIC			15	
REF	6	580-6520-001	STANDARD ASSY PRACTICES			10	
REF	5	580-1497-001	PROCESS, MARKING IDENT			7	
REF	4	523-0778764	RC WORKMANSHIP STD MANUAL			5	
REF	3	489-0004-001	PROCEDURE, ESD			8	
REF	2	828-7034-002	SCHEMATIC DIAGRAM				
1	1	826-0004-742	PRINTED WIRING BOARD				

THE TECHNICAL DATA IN THIS DOCUMENT (OR FILE) IS CONTROLLED FOR EXPORT UNDER THE EXPORT ADMINISTRATION REGULATIONS (EAR), 15 CFR PARTS 730-774. VIOLATIONS OF THESE EXPORT LAWS MAY BE SUBJECT TO FINES AND PENALTIES UNDER THE EXPORT ADMINISTRATION ACT.

NOTICE: THE CONTENTS OF THIS DOCUMENT ARE PROPRIETARY TO ROCKWELL COLLINS, INC. AND SHALL NOT BE DISCLOSED, DISSEMINATED, COPIED, OR USED EXCEPT FOR PURPOSES EXPRESSLY AUTHORIZED IN WRITING BY ROCKWELL COLLINS, INC.

COPYRIGHT 2011 ROCKWELL COLLINS, INC. ALL RIGHTS RESERVED



CAUTION
 CONTAINS PARTS AND ASSEMBLIES SUSCEPTIBLE TO DAMAGE BY ELECTROSTATIC DISCHARGE (ESD)

CONTRACT NO		-----	
PREP	N. NGO	2011-06-03	
CHK	A.CHECKER	2011-06-03	
APVD	R.CAMPBELL	2011-06-03	
NEXT ASSY	983-9400-001	USED ON	HFS-2200
APPLICATION		THIRD ANGLE PROJECTION	

ROCKWELL COLLINS

CIRCUIT CARD ASSEMBLY
 A2 SYSTEM PROCESSOR, I/O

SIZE	CAGEC	DWG NO	REV
D	OEFD0	828-2034-002	A
SCALE	NONE		SHEET 1 OF 17

2011-06-03 13:10:34 CR5000 828-2034-002 R skurthar

PARTS LIST CONTINUED ON THE FOLLOWING SHEET

QTY	ITEM NO	PART OR IDENTIFYING NO	NOMENCLATURE OR DESCRIPTION	DOCUMENT NO	CAGEC	NOTES	REF DESIGNATOR
	10	69	705-2438-260	RESISTOR, 3320 OHMS			R508, 527-529, 538, 569, 609, 610, 624, 644
	2	68	705-2438-140	RESISTOR, 1780 OHMS			R96, 99
	1	67	705-2438-110	RESISTOR, 1500 OHMS			R7
	2	66	705-2438-070	RESISTOR, 1100 OHMS			R44, 622
	77	65	705-2438-050	RESISTOR, 1K OHMS			R36, 37, 40, 42, 43, 47, 52, 55-57, 59-61, 63, 70, 72-74, 76, 77, 79, 82, 116, 118, 157, 160, 171-173, 177-184, 226, 227, 239, 265, 319, 320, 322-325, 349, 451, 477-482, 623, 630, 631, 635, 640, 725, 745, 746, 799, 800, 807, 829, 852, 1189-1195, 4521, 4551
	3	64	705-2437-860	RESISTOR, 475 OHMS			R144-146
	9	63	705-2437-480	RESISTOR, 100 OHMS			R18-21, 68, 330, 452, 913, 914
	11	62	705-2437-230	RESISTOR, 33.2 OHMS			R636, 730, 842-844, 847-850, 921, 924
	2	61	705-2437-050	RESISTOR, 10 OHMS			R813, 915
	86	60	705-2437-010	RESISTOR, 0 OHM			R66, 156, 168, 169, 175, 188, 285, 307, 326, 331-343, 352, 365, 543, 633, 634, 647, 716, 720, 721, 733, 736-741, 747-750, 752-755, 759, 760, 767, 778, 779, 808, 810-812, 815, 857, 861, 871, 879-885, 888, 890, 891, 893-904, 908-912
	1	59	372-7582-020	CONNECTOR, PCB, RECEPTACLE			P16
	2	58	353-8136-060	SEMICONDUCTOR DEVICE, DIODE			CR9, 10
	1	57	353-8135-040	DIODE, SIGNAL			CR6
	1	56	353-8133-110	DIODE, VOLTAGE REFERENCE			VR11
	3	55	353-8133-060	DIODE, VOLTAGE REGULATOR			VR13-15
	1	54	353-8133-010	DIODE, VOLTAGE REFERENCE			VR9
	4	53	353-6824-010	DIODE, RECTIFIER			CR1-3, 7
	10	52	352-9114-020	TRANSISTOR, BIP GENL PURPOSE SMALL SIG			Q20-28, 30
	11	51	352-9113-020	SEMICOND DEVICE, XSTR			Q7-15, 29, 33
	3	50	352-1870-250	TRANSISTOR, FET GENERAL PURPOSE PWR			Q16-18
	1	49	352-1870-120	TRANSISTOR, FET GENERAL PURPOSE PWR			Q34
	1	48	351-9603-470	ANALOG IC, OTHER			U57
	1	47	351-9603-050	INTERFACE IC, LINE DRIVER OR REC			U17
	1	46	351-9209-010	ANALOG IC, COMPARATOR			U31
	3	45	351-6920-020	ANALOG IC, SWITCHING REGULATOR		13	U39-41
	1	44	351-6731-010	IC, LINEAR A/D CONVERTER			U46
	2	43	351-6356-100	MICROPROCESSOR IC, CLOCK GENERATOR			U50, 95
	1	42	351-5546-010	ANALOG IC, POWER MANAGEMENT			U49
	2	41	351-5461-070	MEMORY IC, STATIC RAM			U6, 28
	1	40	351-4133-010	ASIC, DIGITAL			U11
	2	39	351-3462-030	PROGRAMMABLE ROM: OTHER			U35, 42
	2	38	351-3457-010	IC, LINEAR			U33, 36
	1	37	351-3268-070	IC, INTERFACE, LVDS RECEIVER			U69
	2	36	351-3177-060	REGULATOR, LOW NOISE, LOW DROPOUT (LINEAR)			U30, 44
	1	35	351-3152-480	LOGIC IC, GATE			U2
PARTS LIST							

ROCKWELL COLLINS, INC.--PROPRIETARY INFORMATION
 COPYRIGHT 2011 ROCKWELL COLLINS, INC. ALL RIGHTS RESERVED

SIZE D	CAGEC OEFDO	DWG NO 828-2034-002	REV A
SCALE NONE	SHEET 2		

2011-06-03 13:10:34 CR5000 828-2034-002 R skurthar

PARTS LIST CONTINUED ON THE FOLLOWING SHEET

QTY	ITEM NO	PART OR IDENTIFYING NO	NOMENCLATURE OR DESCRIPTION	DOCUMENT NO	CAGEC	NOTES	REF DESIGNATOR
1	96	705-3537-870	RESISTOR, 10.7K OHMS				R161
1	95	705-3537-290	RESISTOR, 2000 OHMS				R243
2	94	705-3535-030	RESISTOR, 20K OHMS				R279, 280
1	93	705-3535-020	RESISTOR, 10K OHMS				R277
1	92	705-3534-370	RESISTOR, 7.5 OHMS				R189
1	91	705-3533-930	RESISTOR, 75K OHMS				R346
6	90	705-3533-160	RESISTOR, 43 OHMS				R51, 71, 80, 129, 130, 137
3	89	705-3234-680	RESISTOR, 130K OHMS				R4-6
1	88	705-3205-600	RESISTOR, 301K OHMS				R728
1	87	705-3205-230	RESISTOR, 52.3K OHMS				R303
8	86	705-3205-110	RESISTOR, 27.4K OHMS				R289-293, 296-298
1	85	705-3204-730	RESISTOR, 5760 OHMS				R282
3	84	705-3204-710	RESISTOR, 5230 OHMS				R267-269
22	83	705-3204-660	RESISTOR, 4020 OHMS				R638, 686-690, 694, 696, 698-705, 708, 709, 834, 836, 837, 876
1	82	705-3204-640	RESISTOR, 3740 OHMS				R125
1	81	705-3204-090	RESISTOR, 324 OHMS				R276
3	80	705-2439-610	RESISTOR, 23.2 OHMS				R1-3
36	79	705-2439-380	RESISTOR, 1M OHMS				R152, 259-262, 294, 295, 353, 354, 388, 412, 413, 415, 444, 445, 459, 504, 505, 706, 717, 719, 722, 743, 744, 831, 835, 856, 875, 878, 923, 925, 1031, 1220, 1221, 1223, 1226
1	78	705-2439-240	RESISTOR, 475K OHMS				R67
2	77	705-2439-110	RESISTOR, 200K OHMS				R48, 164
43	76	705-2438-950	RESISTOR, 100K OHMS				R65, 210-222, 240-242, 327, 345, 471-476, 509, 524-526, 648, 649, 656-667
3	75	705-2438-590	RESISTOR, 20K OHMS				R244, 523, 729
1	74	705-2438-530	RESISTOR, 14.7K OHMS				R193
44	73	705-2438-440	RESISTOR, 10K OHMS				R62, 64, 83-95, 97, 98, 100-102, 131, 150, 158, 195, 202, 204, 270, 271, 274, 287, 288, 344, 395, 461, 530, 568, 621, 780, 781, 872, 905-907, 964
23	72	705-2438-360	RESISTOR, 5490 OHMS				R8, 299-302, 358-363, 409-411, 448, 449, 453, 454, 460, 462, 468-470
143	71	705-2438-330	RESISTOR, 4750 OHMS				R12-17, 22, 23, 25, 26, 38, 41, 45, 46, 49, 50, 53, 54, 58, 75, 81, 121, 132-136, 138, 149, 151, 155, 174, 194, 196, 199-201, 205, 223-225, 228-238, 245-250, 252-257, 263, 264, 272, 273, 284, 304, 308-311, 313, 318, 321, 347, 348, 356, 427, 465, 466, 614, 616, 617, 619, 620, 627, 628, 691-693, 695, 707, 711, 712, 714, 715, 718, 726, 742, 766, 768, 770, 771, 774-777, 783, 784, 786-797, 805, 806, 814, 822-828, 838, 839, 862, 863, 917, 919, 922, 1196, 1197
3	70	705-2438-290	RESISTOR, 3830 OHMS				R141-143

PARTS LIST

ROCKWELL COLLINS, INC.--PROPRIETARY INFORMATION
 COPYRIGHT 2011 ROCKWELL COLLINS, INC. ALL RIGHTS RESERVED

SIZE D	CAGEC OEFDO	DWG NO 828-2034-002	REV A
SCALE NONE	SHEET 3		

2011-06-03 13:10:35 CR5000 828-2034-002 R skurthar

PARTS LIST CONTINUED ON THE FOLLOWING SHEET

QTY	ITEM NO	PART OR IDENTIFYING NO	NOMENCLATURE OR DESCRIPTION	DOCUMENT NO	CAGEC	NOTES	REF DESIGNATOR
3	131	913-0865-460	CAPACITOR, FIXED, .0047UF, 50V				C40-42
3	130	913-0865-350	CAPACITOR, 560pF				C17-19
5	129	913-0863-050	CAPACITOR, 0.1uF				C111-114, 316
1	128	859-4830-100	CONN, ELEC, 50 CONT				P3
2	127	859-4830-060	CONN, PCB, HEADER, 30 CONT				P1, 2
2	126	844-2005-040	SEMICON DVC, DIODE				CR4, 5
2	125	844-0103-010	SEMICON DVC, DIODE				VR1, 2
3	124	844-0077-010	DIODE, RECTIFIER				CR8, 11, 12
1	123	843-0041-010	TRANSISTOR, FET GEN PURPOSE SMALL SIG				Q89
2	122	843-0015-020	TRANSISTOR				Q5, 6
3	121	843-0007-010	XSTR, FIELD EFFECT				Q1, 4, 32
1	120	837-7017-010	RELAY, DPDT				K1
1	119	835-4509-030	IC, DIGITAL LOGIC				U37
1	118	835-4508-050	LOGIC IC, BUS DRIVER/TRANSCIEVER				U29
1	117	835-1718-010	INTERFACE IC, LINE DRIVER OR REC				U45
1	116	835-0094-010	IC, LINEAR				U3
6	115	835-0032-020	IC, LINEAR				U51-54, 61, 62
1	114	833-6626-660	RESISTOR, 475 OHMS				R185
2	113	833-6626-590	RESISTOR, 402 OHMS				R286, 306
8	112	833-6526-960	RESISTOR, 97.6 OHMS				R28-35
4	111	833-6501-770	RESISTOR, 665 OHMS				R206-209
11	110	833-6083-360	RESISTOR, 0.012 OHM				R103, 104, 167, 190, 540-542, 639, 713, 804, 877
2	109	705-3613-430	RESISTOR, FIXED, 2.21K OHM, .1W, 1%				R350, 846
22	108	705-3613-250	RESISTOR, FIXED, 14K OHM, .1W, 1%				R539, 544, 546, 547, 668-685
17	107	705-3567-510	RESISTOR, FIXED, 30.9K OHM, .063W, .1%				R105-115, 117, 120, 122-124, 446
1	106	705-3555-140	RESISTOR, 13.7K OHMS				R78
1	105	705-3554-670	RESISTOR, 4870 OHMS				R166
11	104	705-3554-660	RESISTOR, 4750 OHMS				R874, 1238-1247
3	103	705-3553-180	RESISTOR, 150 OHMS				R9-11
41	102	705-3553-010	RESISTOR, 100 OHMS				R119, 147, 570-608
263	101	705-3552-510	RESISTOR, 33.2 OHMS				R24, 39, 126, 127, 159, 162, 163, 165, 191, 275, 283, 305, 312, 355, 364, 366-387, 389-394, 396-408, 414, 416, 418-426, 428-443, 447, 450, 457, 458, 463, 464, 483-503, 545, 548-566, 613, 625, 626, 629, 632, 637, 641-643, 645, 646, 650-655, 731, 732, 734, 735, 751, 756-758, 761-765, 769, 772, 782, 785, 798, 801-803, 809, 816, 821, 830, 832, 833, 864, 916, 955, 986-1018, 1025, 1027, 1032, 1090-1098, 1107-1143, 1203, 1204, 1230, 1231
7	100	705-3552-380	RESISTOR, 24.3 OHMS				R314-317, 328, 329, 567
25	99	705-3552-010	RESISTOR, 10 OHMS				R357, 510-522, 531-537, 611, 612, 615, 618
6	98	705-3551-970	RESISTOR, 0 OHMS				R865-870
1	97	705-3538-080	RESISTOR, 18.2K OHMS				R278

ROCKWELL COLLINS, INC.--PROPRIETARY INFORMATION
 COPYRIGHT 2011 ROCKWELL COLLINS, INC. ALL RIGHTS RESERVED

SIZE D	CAGEC OEFDO	DWG NO 828-2034-002	REV A
SCALE NONE	SHEET 4		

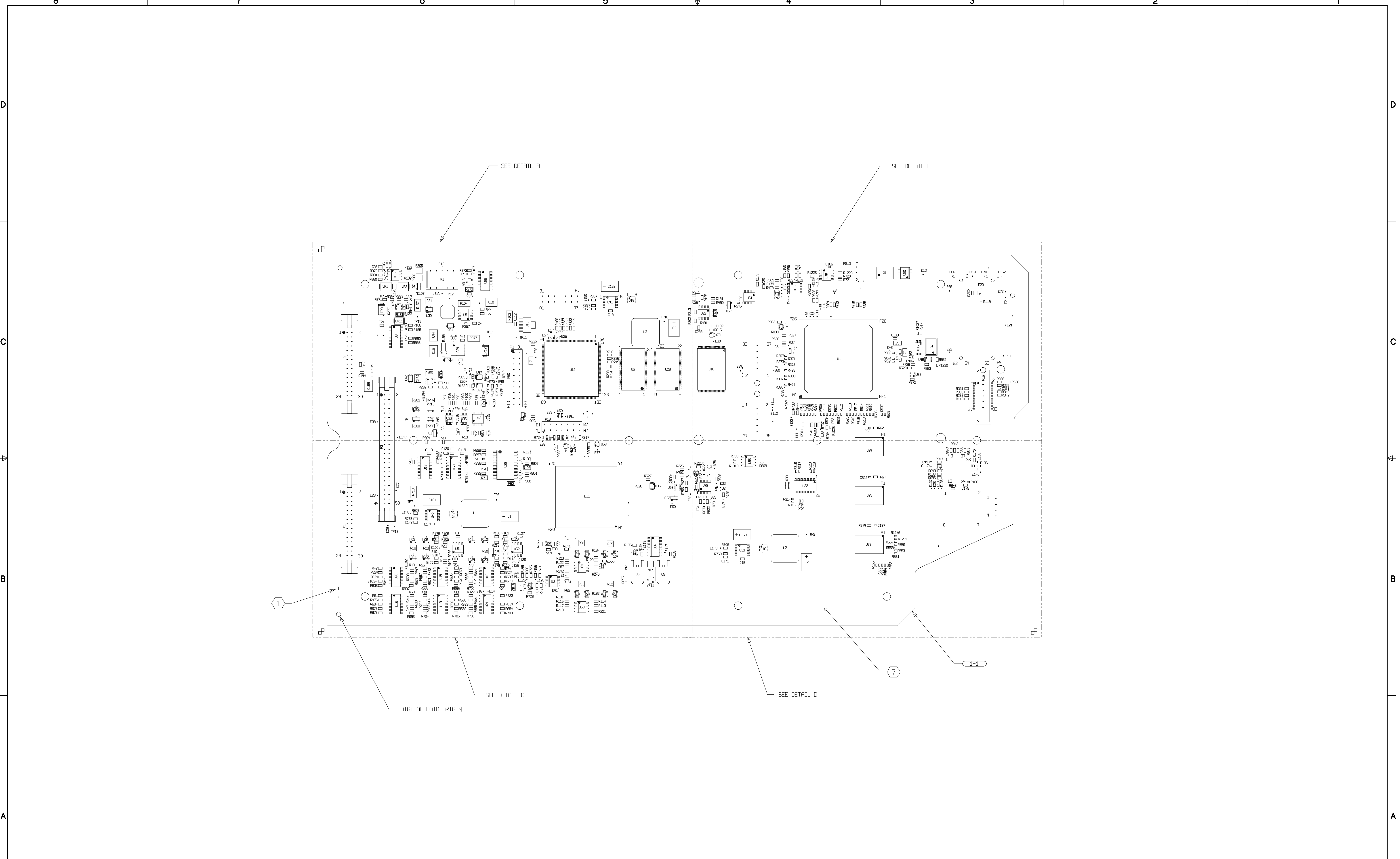
2011-06-03 13:10:35 CR5000 828-2034-002 R skurthar

QTY	ITEM NO	PART OR IDENTIFYING NO	NOMENCLATURE OR DESCRIPTION	DOCUMENT NO	CAGEC	NOTES	REF DESIGNATOR
3	153	913-3348-080	CAPACITOR, FIXED, 1UF, 16V				C147, 150, 151
7	152	913-3241-010	CAPACITOR, FIXED, 2.2UF, 100V				C10, 12-15, 44, 168
18	151	913-3097-010	CAPACITOR, FIXED, 4.7UF, 25V				C47, 48, 50-56, 58, 64, 67, 68, 72, 78, 79, 174, 518
1	150	913-3096-010	CAPACITOR, 10uF				C165
83	149	913-3087-350	CAPACITOR, FIXED 0.1uF, 16V				C5, 137, 166, 167, 169, 176, 184, 197-199, 201, 215, 219-221, 255-266, 274, 440-491, 520-522
10	148	913-3086-040	CAPACITOR, FIXED, 10UF, 25V				C6, 7, 31, 33, 152-157
10	147	913-3070-060	CAPACITOR, 1000pF				C16, 26, 122, 177-183
1	146	913-3068-030	CAPACITOR, 0.068uF				C301
145	145	913-3067-150	CAPACITOR, 0.1uF				C8, 9, 11, 20, 21, 24, 25, 27-30, 34, 35, 38, 39, 45, 46, 61-63, 65, 66, 69-71, 74-77, 80, 82, 91, 94-96, 102, 105-110, 115, 116, 118, 120, 123, 124, 133, 135, 136, 138-141, 170, 175, 187-192, 196, 202, 236, 287, 288, 327, 328, 331, 332, 334-337, 340-380, 384-407, 422, 423, 436, 517
3	144	913-3067-090	CAPACITOR, 0.033uF				C171-173
3	143	913-3067-060	CAPACITOR, 0.018uF				C143, 145, 146
6	142	913-3066-040	CAPACITOR, 470pF				C267-272
3	141	913-3059-260	CAPACITOR, 120pF				C514-516
1	140	913-3059-170	CAPACITOR, 22pF				C200
6	139	913-3059-140	CAPACITOR, 12pF				C49, 59, 60, 92, 117, 311
2	138	913-3059-130	CAPACITOR, 10pF				C103, 104
8	137	913-3059-090	CAPACITOR, 4.7pF				C126-132, 134
1	136	913-3056-010	CAPACITOR, 2.2uF				C185
5	135	913-0866-620	CAPACITOR, 1uF				C99-101, 285, 286
1	134	913-0865-980	CAPACITOR, 100pF				C273
8	133	913-0865-860	CAPACITOR, 43pF				C81, 83-89
22	132	913-0865-500	CAPACITOR, 0.01uF				C4, 22, 23, 36, 93, 119, 121, 125, 142, 144, 148, 149, 158, 159, 163, 204-206, 214, 218, 254, 502
PARTS LIST							

ROCKWELL COLLINS, INC.--PROPRIETARY INFORMATION
 COPYRIGHT 2011 ROCKWELL COLLINS, INC. ALL RIGHTS RESERVED

SIZE D	CAGEC OEFDO	DWG NO 828-2034-002	REV A
SCALE NONE	SHEET 5		

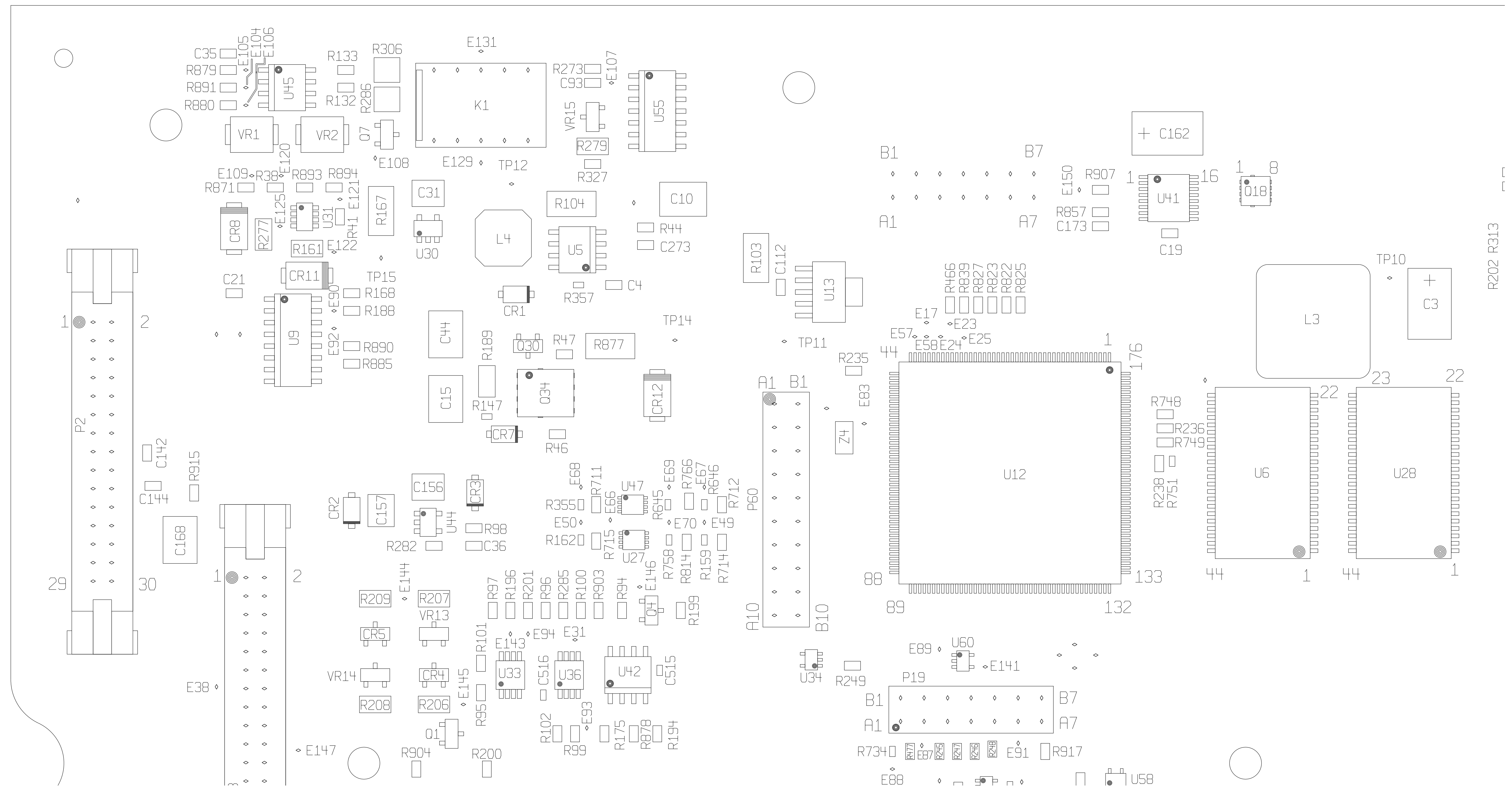
2011-06-03 13:11:15 CR5000 828-2034-002 R sk-ruther



COMPONENTS TOP

SIZE D	CAGEC 0EFD0	DWG NO 828-2034-002	REV A
SCALE NONE	SHEET 6		

2011-06-03 13:11:15 CR5000 828-2034-002 R sknuthr



DETAIL A

ROCKWELL COLLINS, INC.--PROPRIETARY INFORMATION
 COPYRIGHT 2011 ROCKWELL COLLINS, INC. ALL RIGHTS RESERVED

SIZE D	CAGEC OEFD0	DWG NO 828-2034-002	REV A
SCALE NONE			SHEET 7

2011-06-03 13:11:15 CR5000 828-2034-002 R sknuthr

8 7 6 5 4 3 2 1

C

B

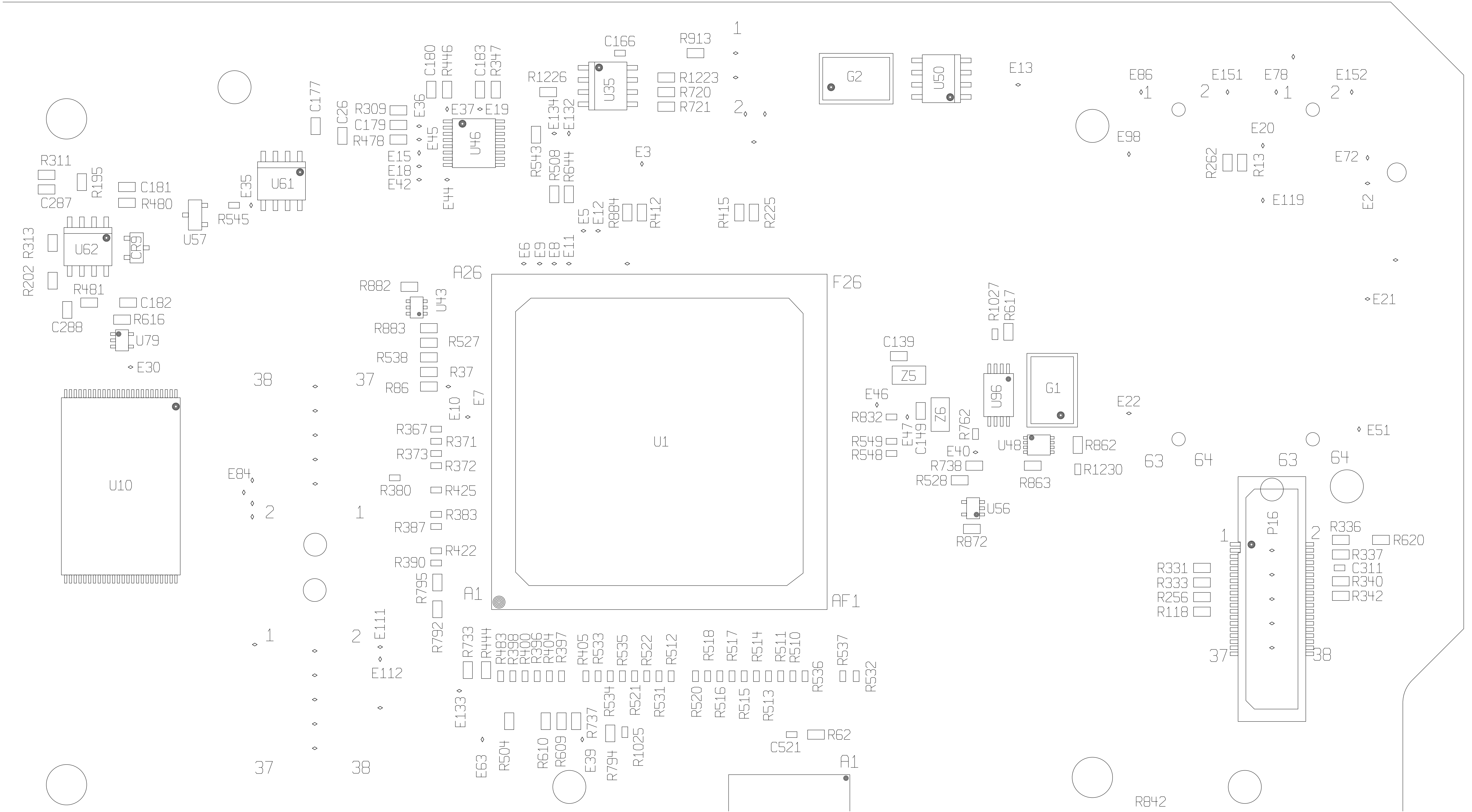
A

D

C

B

A



ROCKWELL COLLINS, INC.--PROPRIETARY INFORMATION
 COPYRIGHT 2011 ROCKWELL COLLINS, INC. ALL RIGHTS RESERVED

DETAIL B

SIZE D	CAGEC 0EFD0	DWG NO 828-2034-002	REV A
SCALE NONE	SHEET 8		

8 7 6 5 4 3 2 1

2011-06-03 13:11:15 CR5000 828-2034-002 R sknuthr

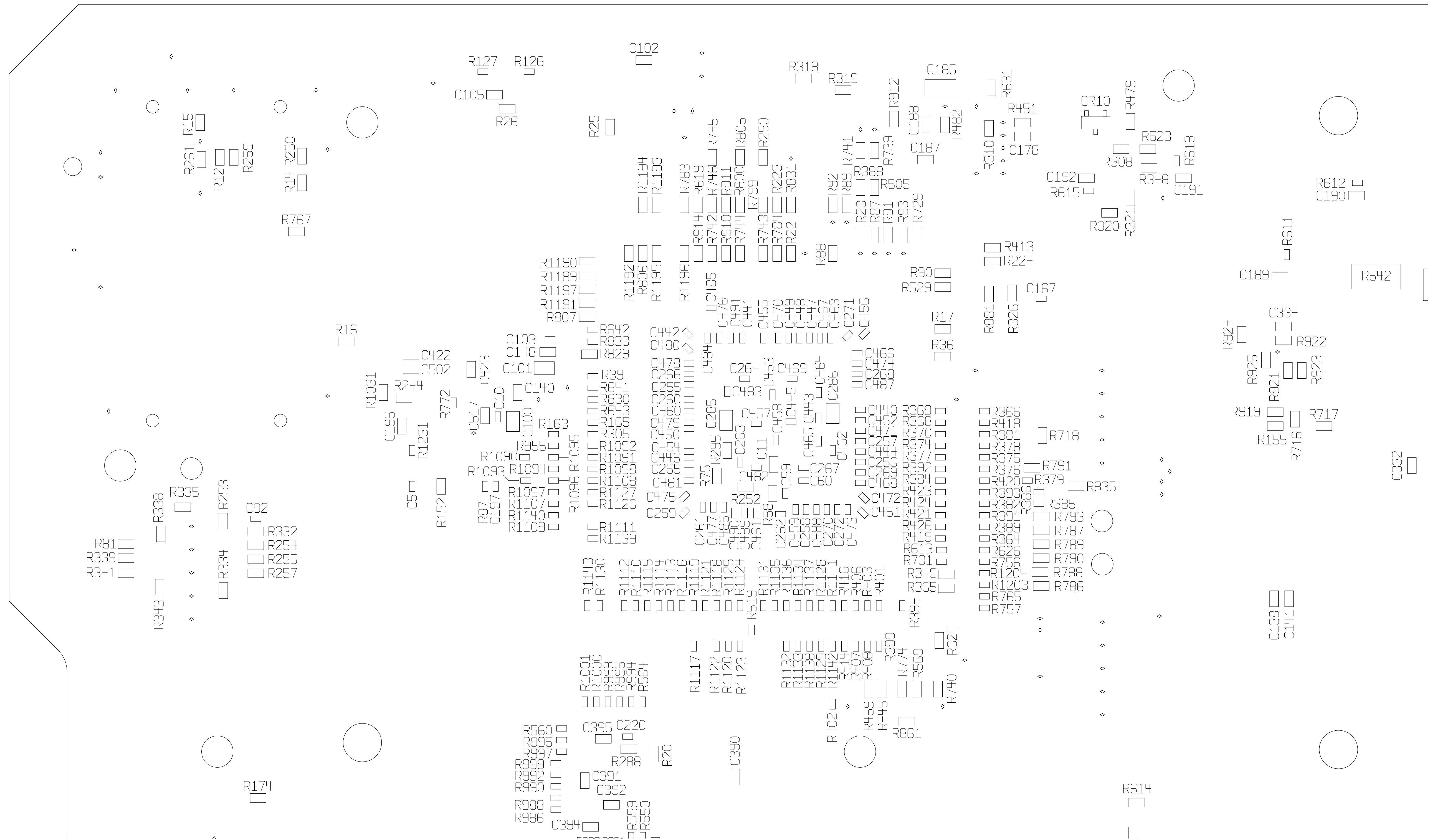


ROCKWELL COLLINS, INC.--PROPRIETARY INFORMATION
 COPYRIGHT 2011 ROCKWELL COLLINS, INC. ALL RIGHTS RESERVED

COMPONENTS BOTTOM

SIZE D	CAGEC 0EFD0	DWG NO 828-2034-002	REV A
SCALE NONE	SHEET 11		

2011-06-03 13:11:15 CR5000 828-2034-002 R skrutner

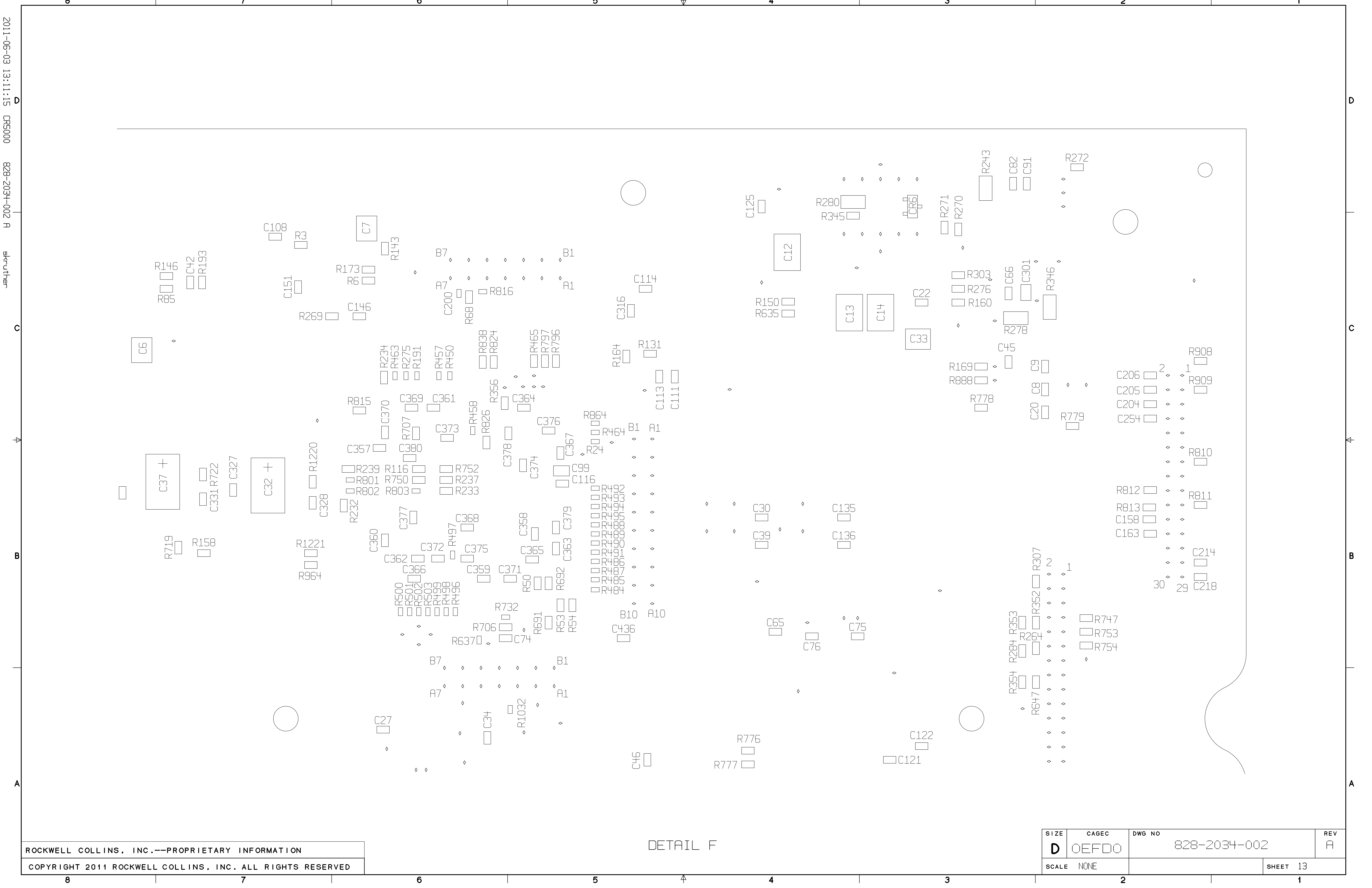


DETAIL E

ROCKWELL COLLINS, INC.--PROPRIETARY INFORMATION
COPYRIGHT 2011 ROCKWELL COLLINS, INC. ALL RIGHTS RESERVED

SIZE	CAGEC	DWG NO	REV
D	OEFDO	828-2034-002	A
SCALE	NONE	SHEET 12	

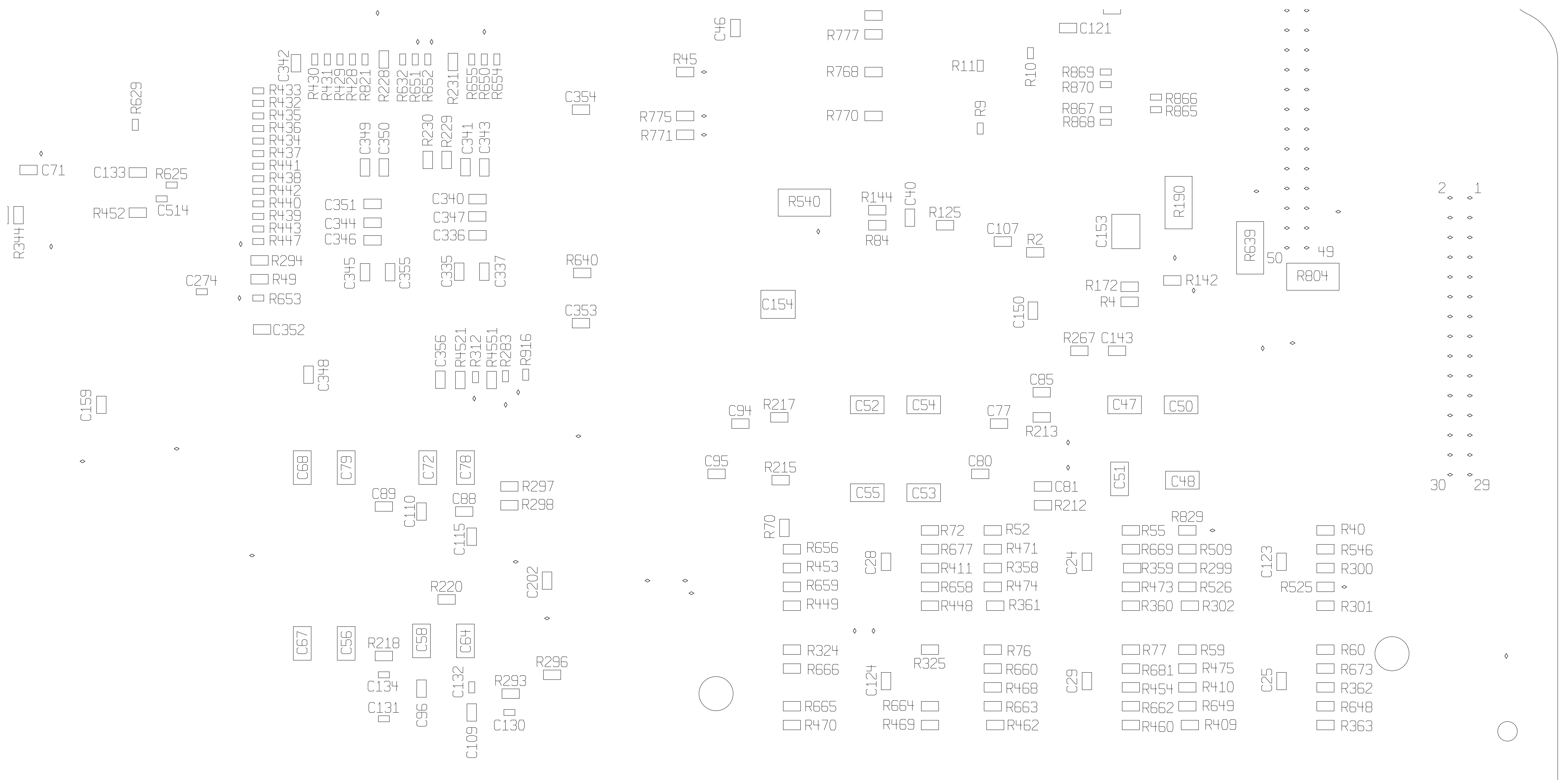
8 7 6 5 4 3 2 1



ROCKWELL COLLINS, INC.--PROPRIETARY INFORMATION
 COPYRIGHT 2011 ROCKWELL COLLINS, INC. ALL RIGHTS RESERVED

DETAIL F

SIZE D	CAGEC OEFD0	DWG NO 828-2034-002	REV A
SCALE NONE		SHEET 13	

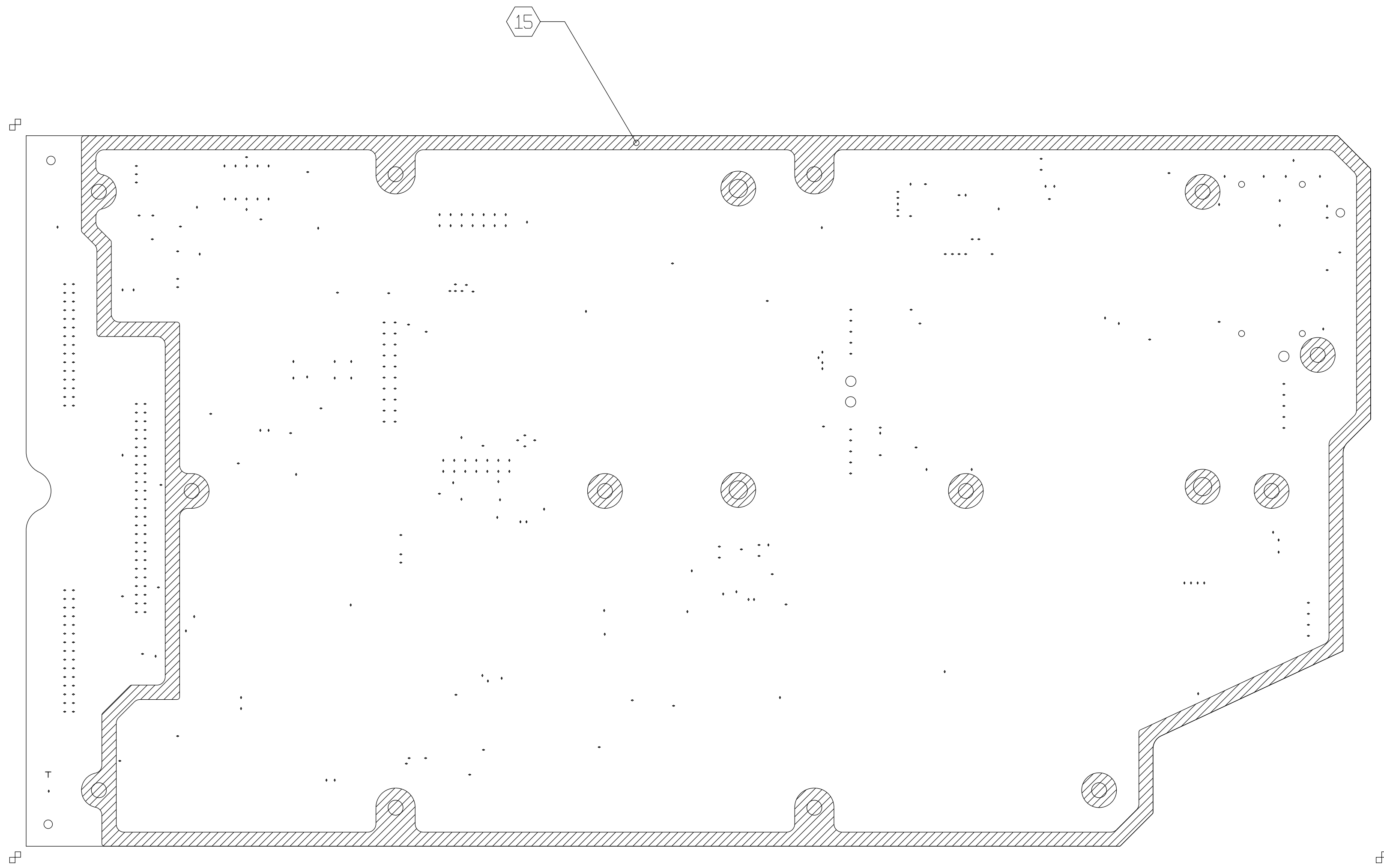


ROCKWELL COLLINS, INC.--PROPRIETARY INFORMATION
 COPYRIGHT 2011 ROCKWELL COLLINS, INC. ALL RIGHTS RESERVED

DETAIL H

SIZE D	CAGEC OEFDO	DWG NO 828-2034-002	REV A
SCALE NONE	SHEET 15		

2011-06-03 13:11:15 CR5000 828-2034-002 R skruthar

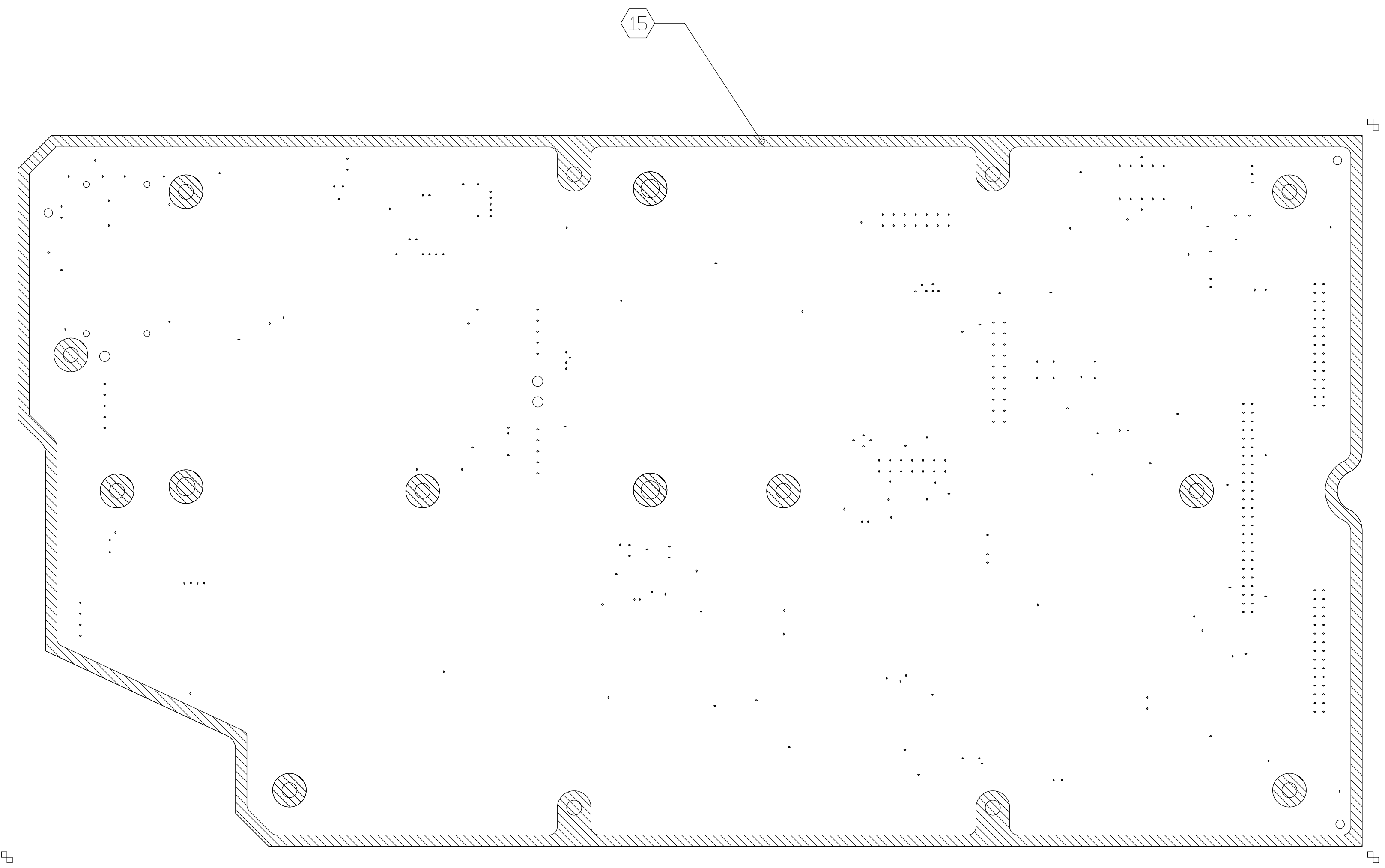


CONFORMAL COAT TOP

ROCKWELL COLLINS, INC.--PROPRIETARY INFORMATION
 COPYRIGHT 2011 ROCKWELL COLLINS, INC. ALL RIGHTS RESERVED

SIZE D	CAGEC 0EFDO	DWG NO 828-2034-002	REV A
SCALE NONE	SHEET 16		

2011-06-03 13:11:15 CR5000 828-2034-002 R sk-ruther



ROCKWELL COLLINS, INC.--PROPRIETARY INFORMATION
 COPYRIGHT 2011 ROCKWELL COLLINS, INC. ALL RIGHTS RESERVED

CONFORMAL COAT BOTTOM

SIZE	CAGEC	DWG NO	REV
D	0EFDO	828-2034-002	A
SCALE	NONE	SHEET 17	