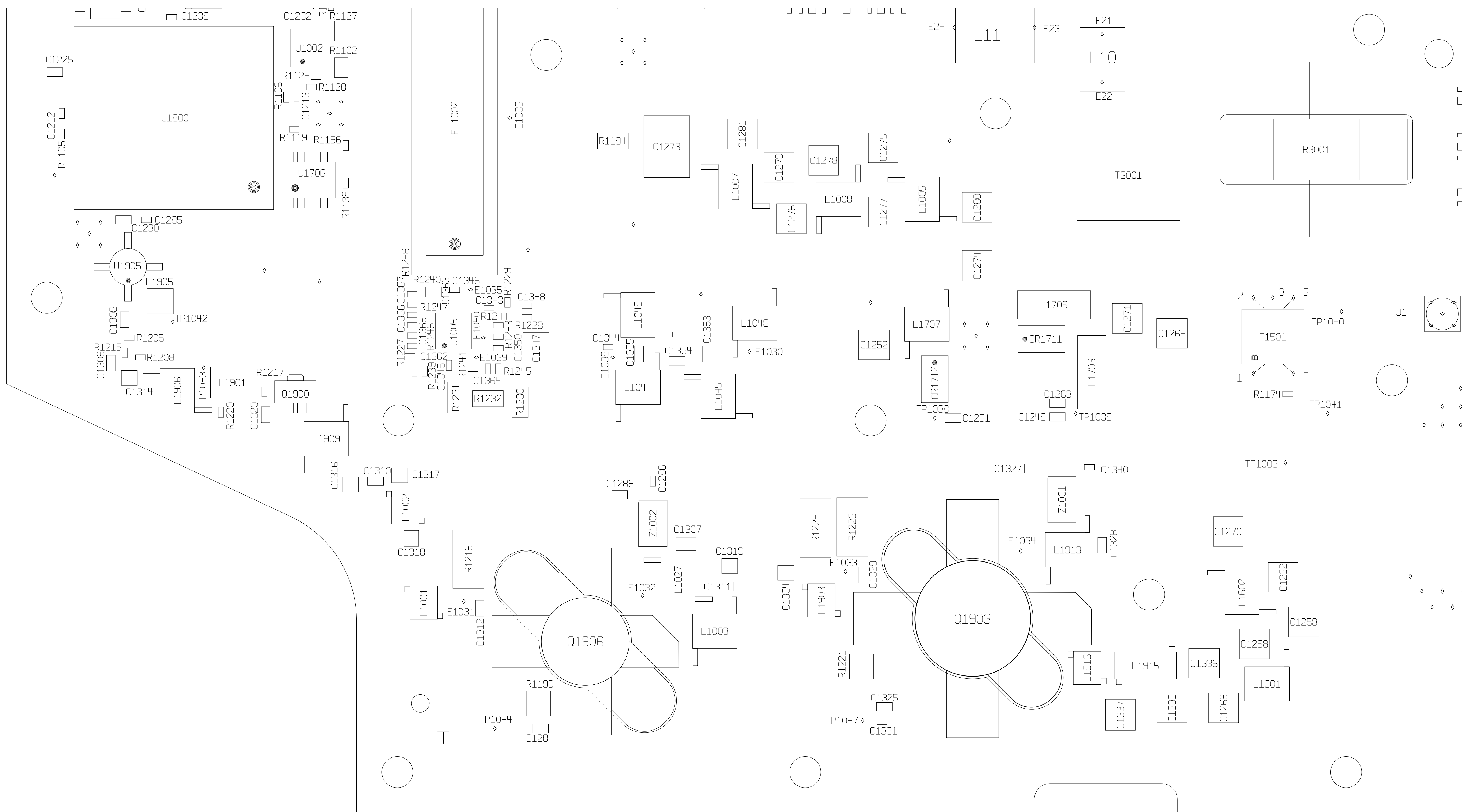


2011-02-13 09:17:03 CR5000 828-3777-001 C hmcarter

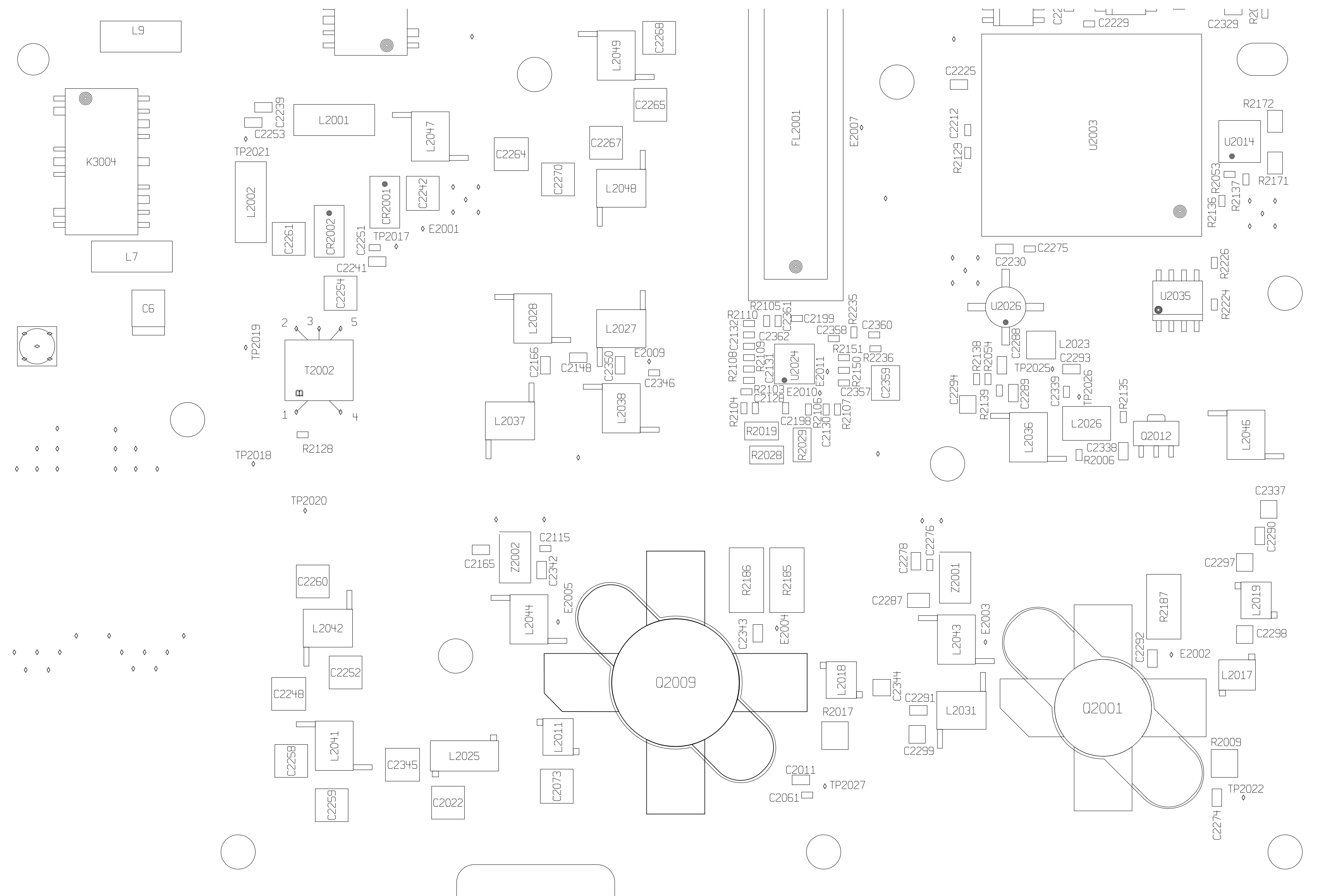


DETAIL C

ROCKWELL COLLINS, INC.--PROPRIETARY INFORMATION  
COPYRIGHT 2011 ROCKWELL COLLINS, INC. ALL RIGHTS RESERVED

SIZE <b>D</b>	CAGEC 4V792	DWG NO 828-3777-001	REV <b>C</b>
SCALE NONE	SHEET 11		

2011-02-11 14:59:29 CR5000 828-3777-001 C hmcarter

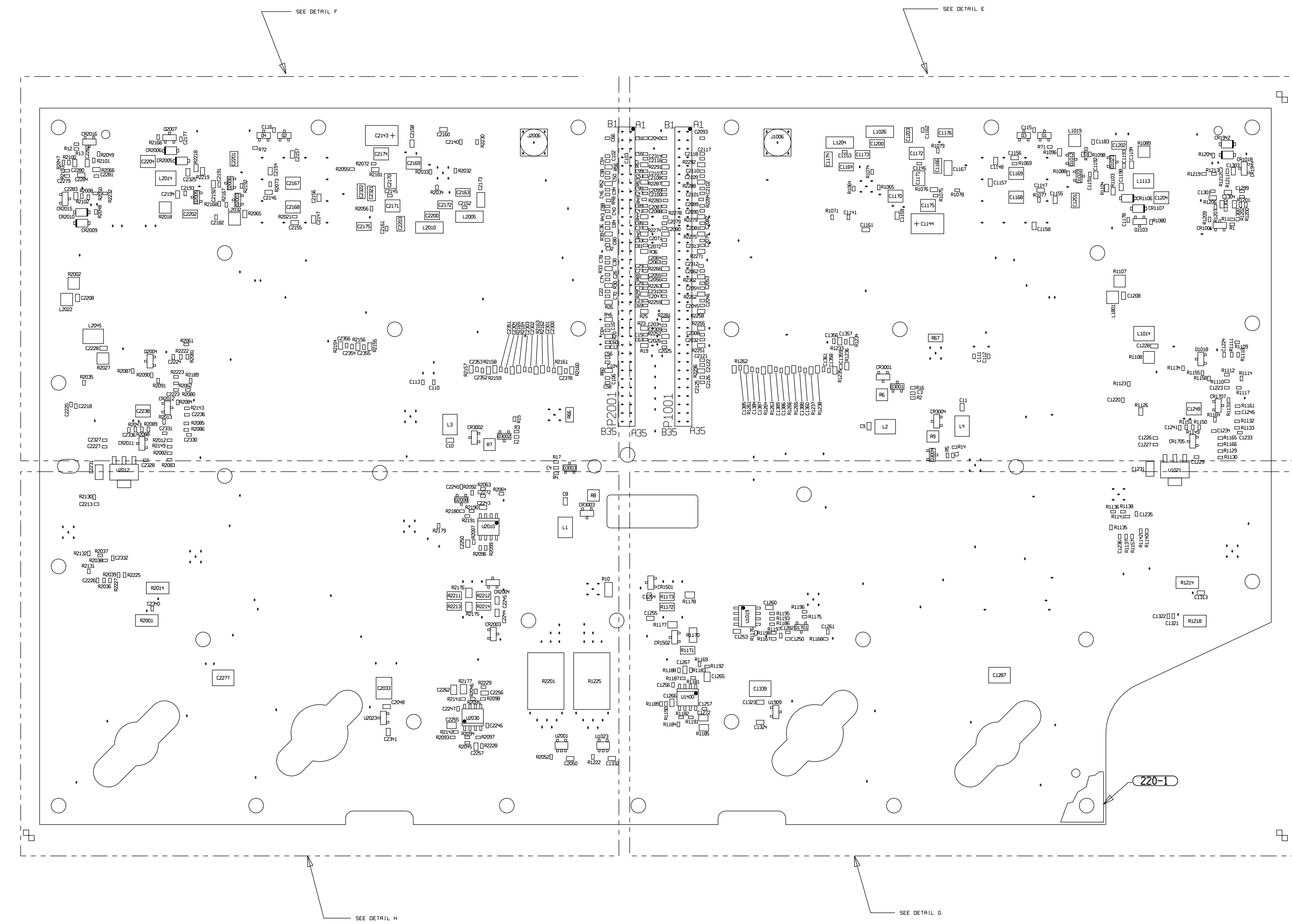


DETAIL D

ROCKWELL COLLINS, INC.--PROPRIETARY INFORMATION  
 COPYRIGHT 2011 ROCKWELL COLLINS, INC. ALL RIGHTS RESERVED

SIZE <b>D</b>	CAGEC 4V792	DWG NO 828-3777-001	REV C
SCALE NONE	SHEET 12		

2011-02-11 14:59:29 CR5000 828-3777-001 C hvcap:ter



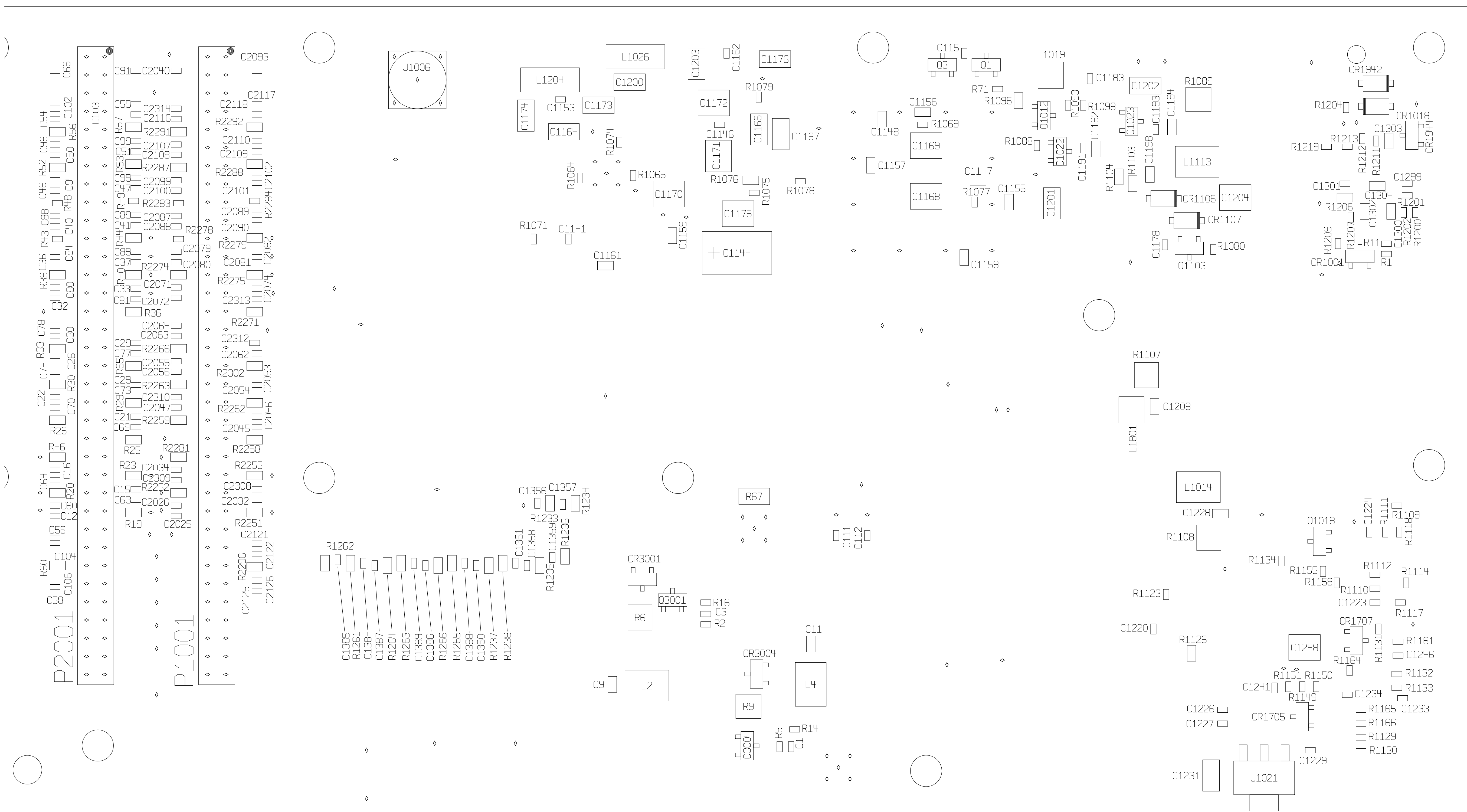
COMPONENTS BOTTOM

ROCKWELL COLLINS, INC.--PROPRIETARY INFORMATION  
 COPYRIGHT 2011 ROCKWELL COLLINS, INC. ALL RIGHTS RESERVED

SIZE <b>D</b>	CAGEC 4V792	DWG NO 828-3777-001	REV C
SCALE NONE		SHEET 13	

8 7 6 5 4 3 2 1

2011-02-11 14:59:29 CR5000 828-3777-001 C hmcarter

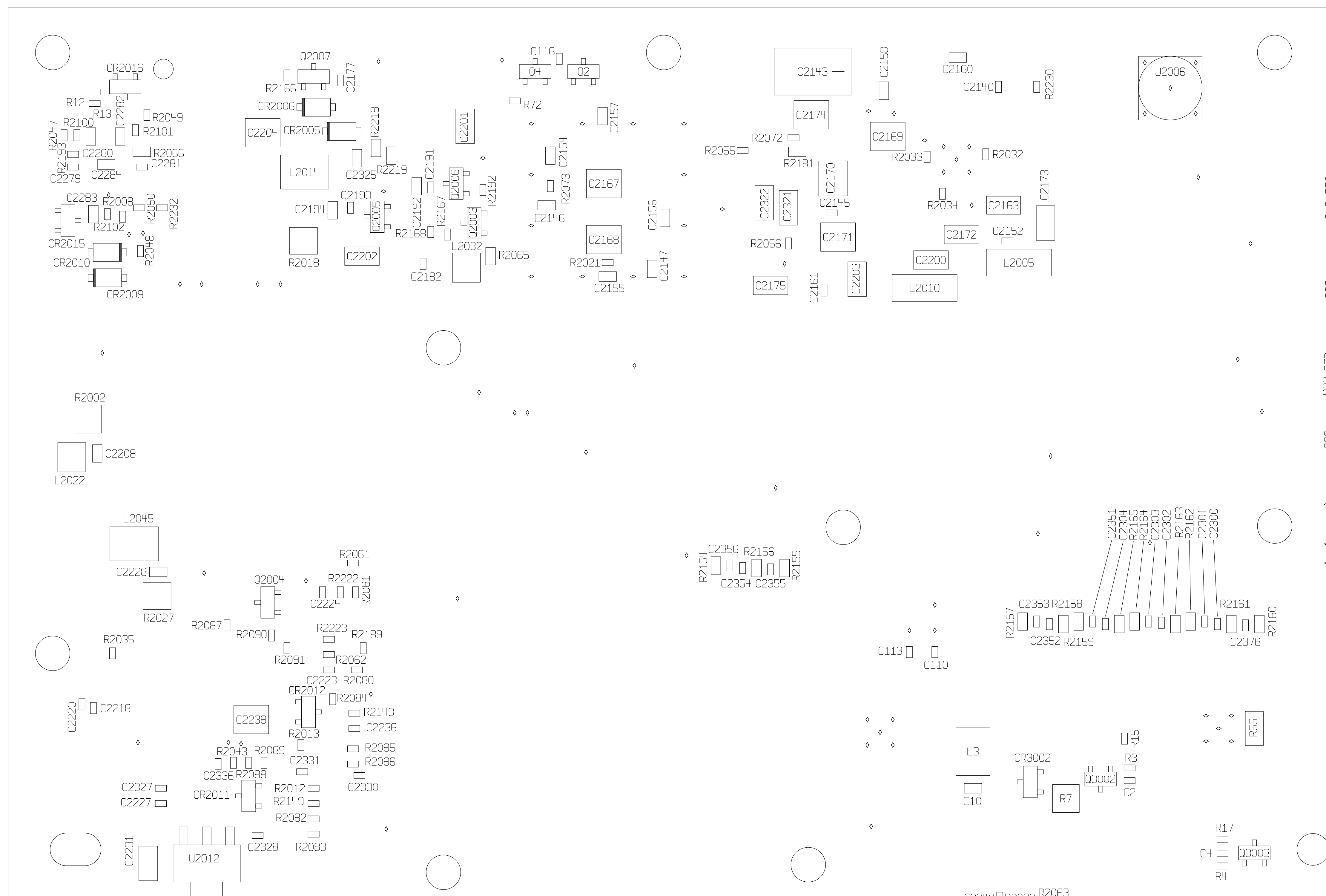


ROCKWELL COLLINS, INC.--PROPRIETARY INFORMATION  
 COPYRIGHT 2011 ROCKWELL COLLINS, INC. ALL RIGHTS RESERVED

DETAIL E

SIZE D	CAGEC 4V792	DWG NO 828-3777-001	REV C
SCALE NONE	SHEET 14		

2011-02-11 14:59:29 CR5000 828-3777-001 C h:\car\ter



ROCKWELL COLLINS, INC.--PROPRIETARY INFORMATION  
COPYRIGHT 2011 ROCKWELL COLLINS, INC. ALL RIGHTS RESERVED

DETAIL F

8

7

6

5

4

3

2

1

D

D

C

C

B

B

A

A



220-1

DETAIL G

SIZE	CAGEC	DWG NO	REV
D	4V792	828-3777-001	C
SCALE	NONE	SHEET	16

8

7

6

5

4

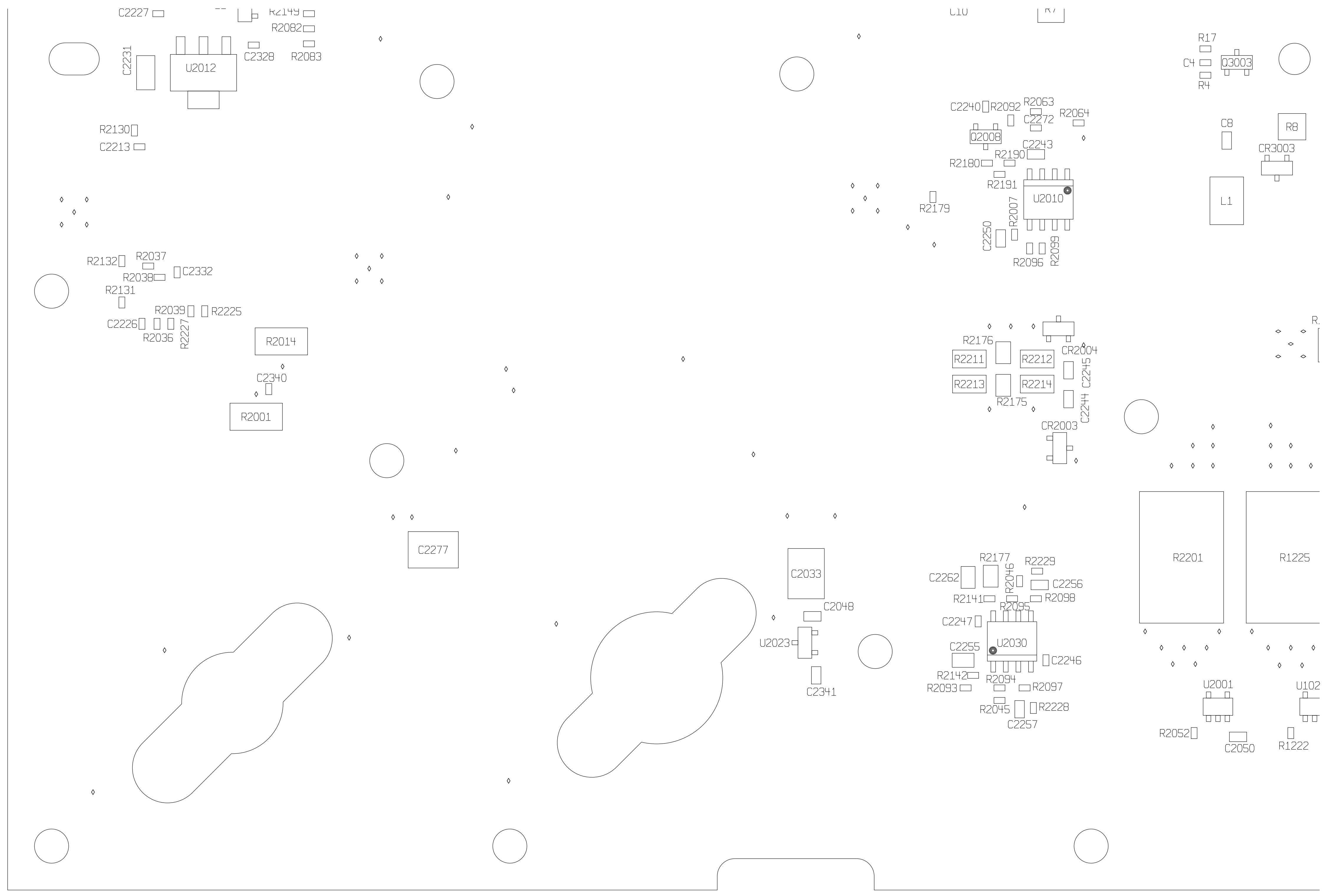
3

2

1

8 7 6 5 4 3 2 1

2011-02-11 14:59:29 CR5000 828-3777-001 C hmcarter



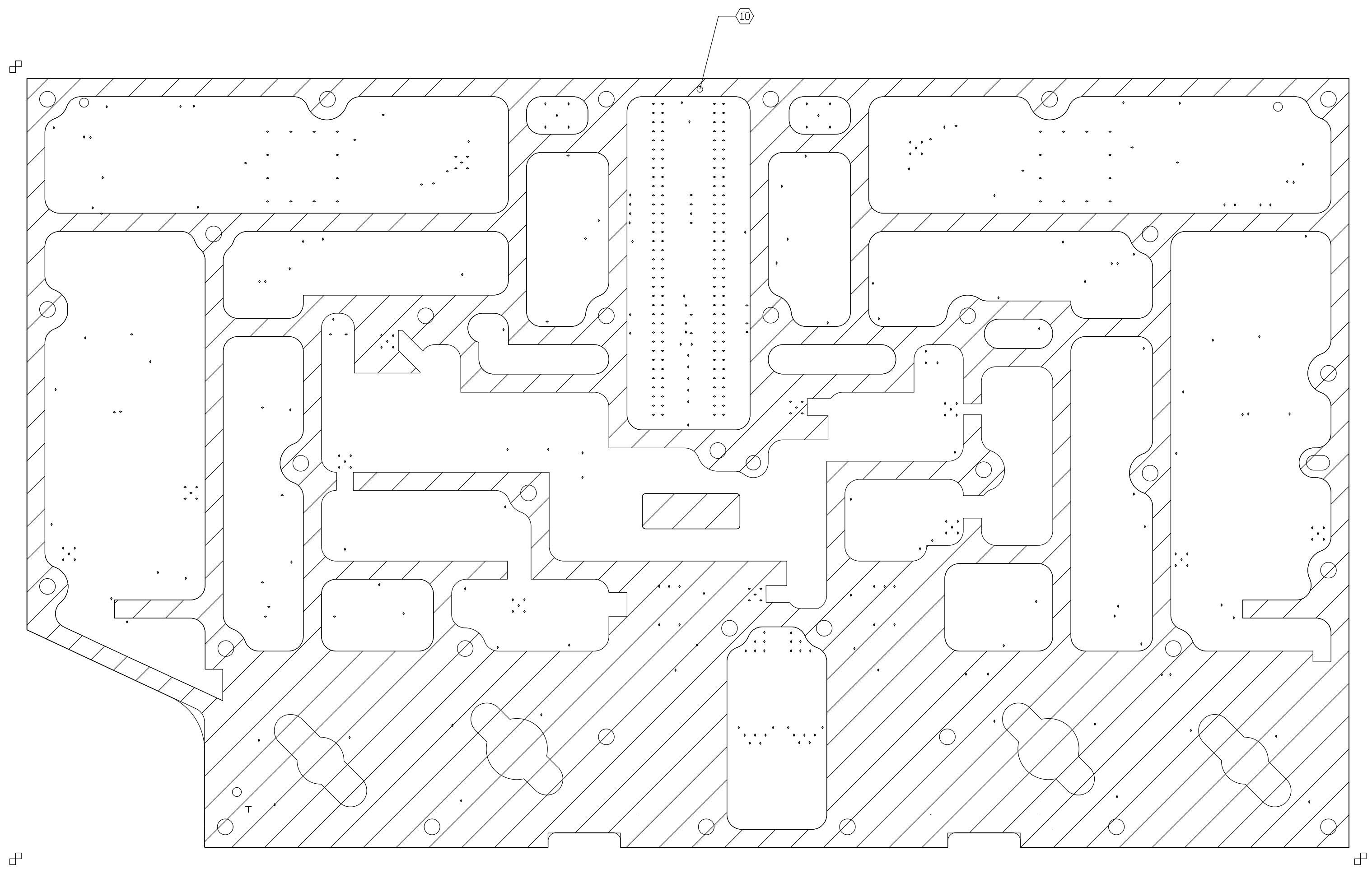
DETAIL H

ROCKWELL COLLINS, INC.--PROPRIETARY INFORMATION  
 COPYRIGHT 2011 ROCKWELL COLLINS, INC. ALL RIGHTS RESERVED

SIZE	CAGEC	DWG NO	REV
D	4V792	828-3777-001	C
SCALE	NONE	SHEET	17

8 7 6 5 4 3 2 1

2011-02-11 14:59:29 CR5000 828-3777-001 C hvcap:ter



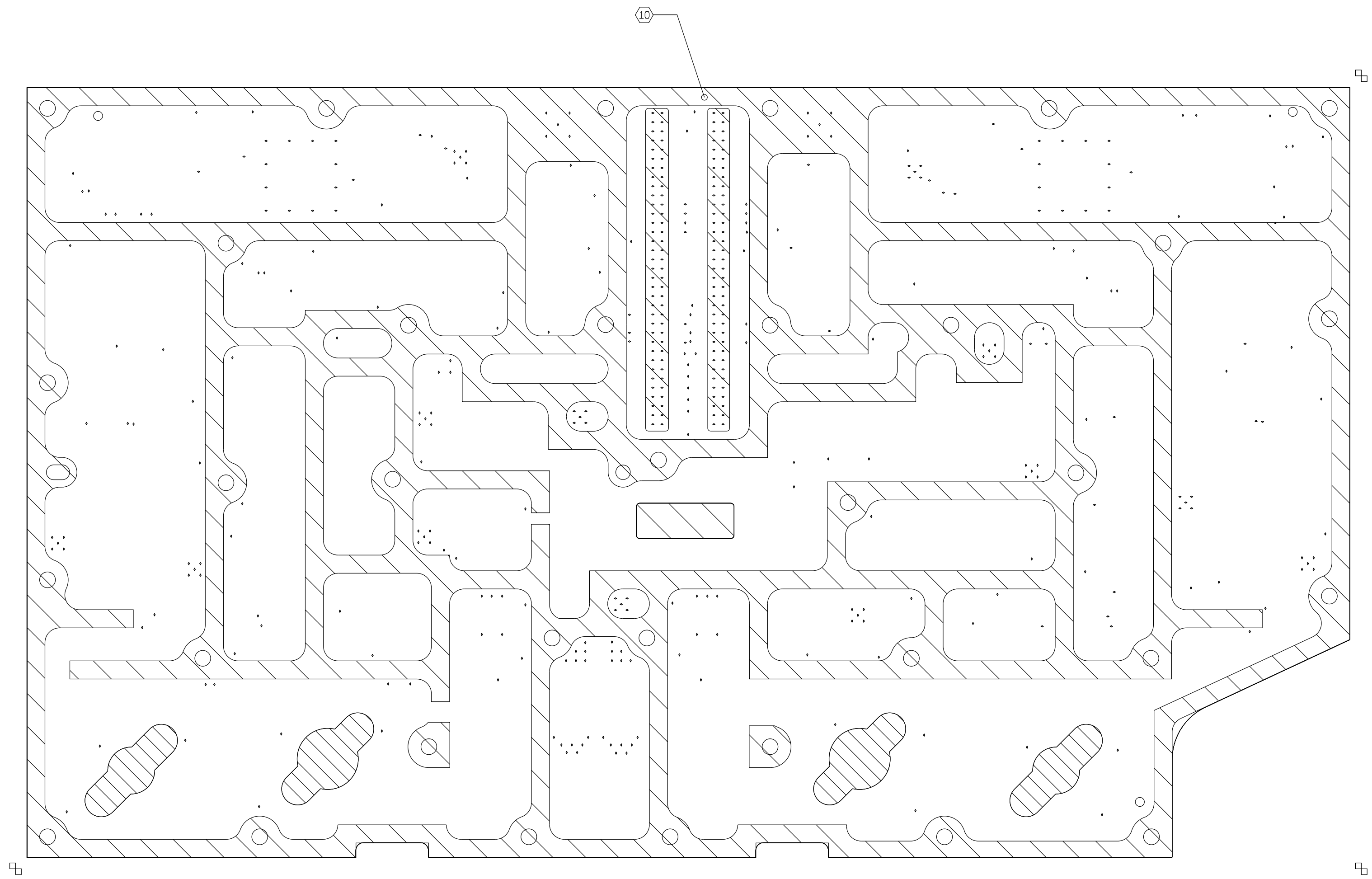
CONFORMAL COAT TOP

ROCKWELL COLLINS, INC.--PROPRIETARY INFORMATION  
 COPYRIGHT 2011 ROCKWELL COLLINS, INC. ALL RIGHTS RESERVED

SIZE	CAGEC	DWG NO	REV
D	4V792	828-3777-001	C
SCALE	NONE	SHEET 18	



2011-02-11 14:59:29 CR5000 828-3777-001 C hmcarter



CONFORMAL COAT BOTTOM

ROCKWELL COLLINS, INC.--PROPRIETARY INFORMATION  
 COPYRIGHT 2011 ROCKWELL COLLINS, INC. ALL RIGHTS RESERVED

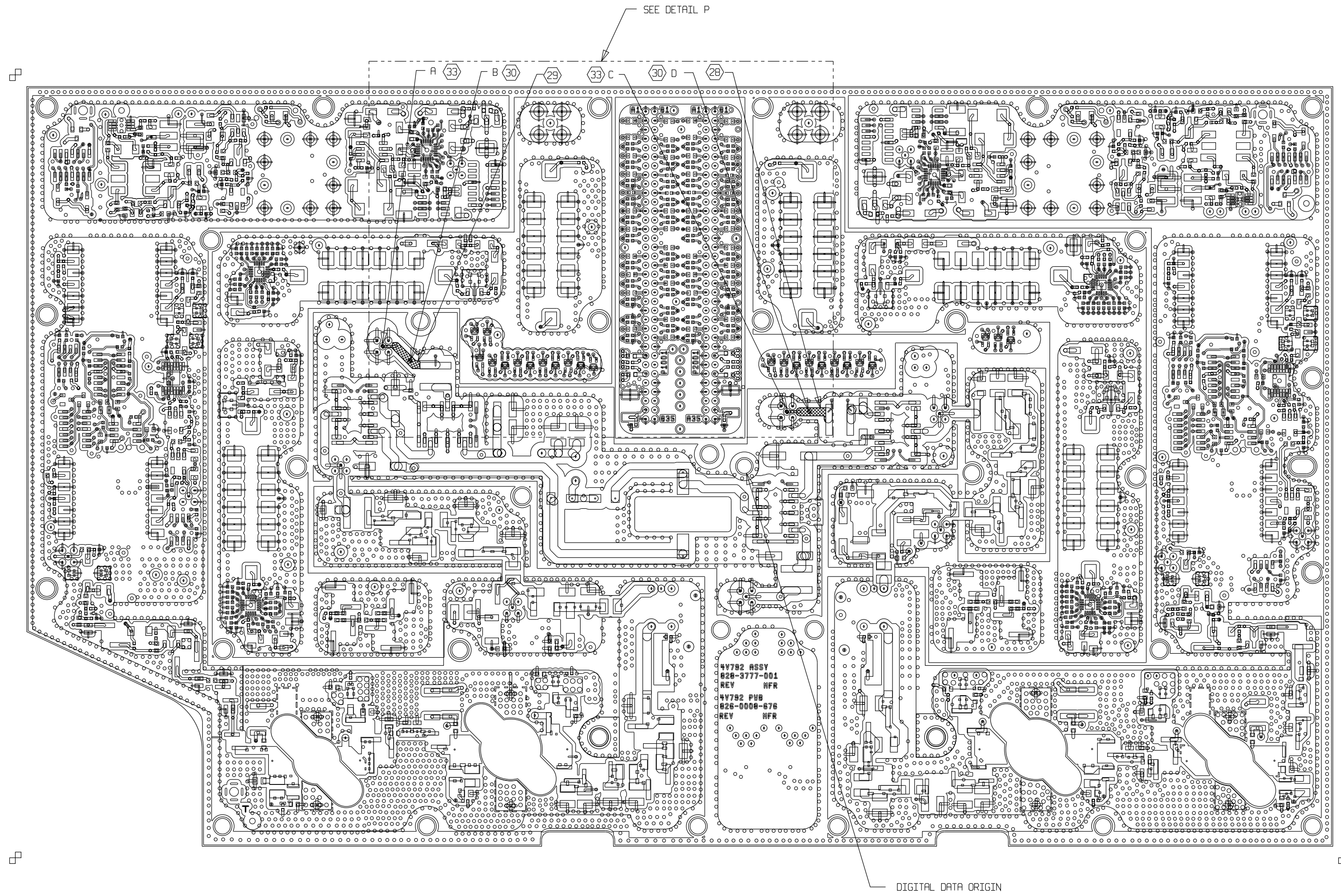
SIZE <b>D</b>	CAGEC 4V792	DWG NO 828-3777-001	REV C
SCALE NONE	SHEET 19		

2011-02-11 14:59:29 CR5000 828-3777-001 C hmcpar-ter

8 7 6 5 4 3 2 1

ALL MEASUREMENTS ARE FROM THE DIGITAL DATA ORIGIN  
 TOTAL NUMBER OF CIRCUIT LAYERS: 10  
 CUT CIRCUIT LAYER AT APPROXIMATE LOCATION INDICATED BY ●

CIRCUIT LAYER CUT CHART					
CUT LTR.	CUT CKT LTR.	DISCONNECTS	X DIM	Y DIM	CUT FROM TOP/BOT
A	ALL	SEE NOTE 33	-3.150	1.045	TOP
B	ALL	SEE NOTE 30	-2.911	0.919	TOP
C	ALL	SEE NOTE 33	0.370	0.475	TOP
D	ALL	SEE NOTE 30	0.565	0.477	TOP
E	10	J2-1 FROM R66-T	0.316	0.575	BOT
F	10	J2-1 FROM R66-T	0.305	0.475	BOT
G	10	J3-1 FROM R67-R	-3.157	1.133	BOT
H	10	J3-1 FROM R67-R	-3.255	1.107	BOT



D  
C  
B  
A

D  
C  
B  
A

ROCKWELL COLLINS, INC.--PROPRIETARY INFORMATION  
 COPYRIGHT 2011 ROCKWELL COLLINS, INC. ALL RIGHTS RESERVED

CIRCUIT LAYER 1 CUTS AND COPPER REMOVAL TOP VIEW

SIZE	CAGEC	DWG NO	REV
D	4V792	828-3777-001	C
SCALE	NONE	SHEET	20

8 7 6 5 4 3 2 1