



Excellence in Compliance Testing

---

## **Certification Exhibit**

**FCC ID: AJKPN822-2365**

**FCC Rule Part: Part 87**

**ACS Report Number: 10-0105.W03.11.A**

Manufacturer: Rockwell Collins, Inc.  
Model: LRA-2100

## **Label Information**

## Exhibit A – LRA-2100 FCC Certification

The identification plate is located on the front of the unit, as shown in the figure below. The Identification plate drawing is CPN 685-7317-000.

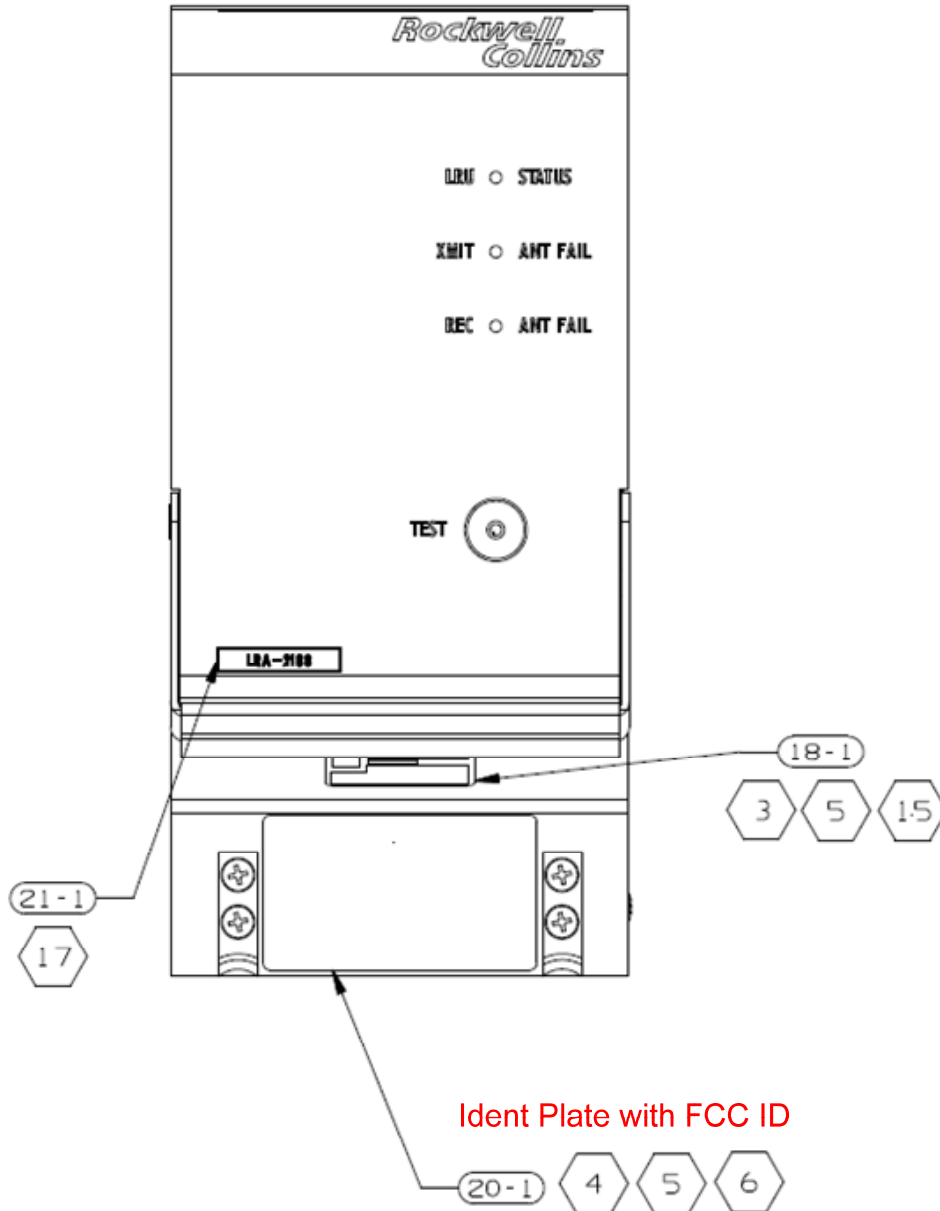
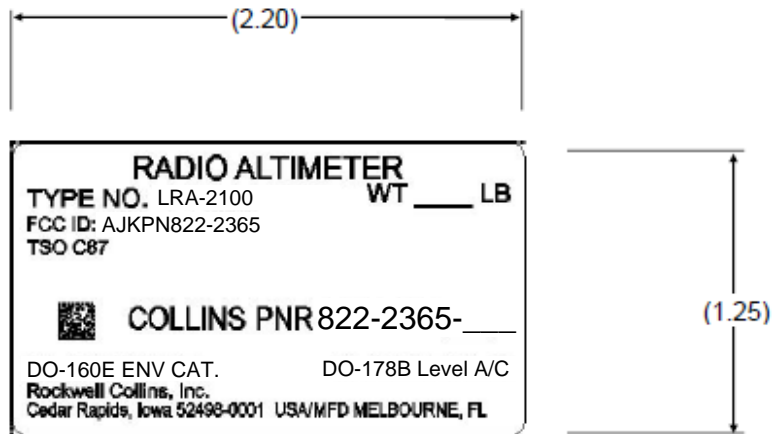


Figure 1 - Location of Identification Plate



**Figure 2 - Identification Plate**



Figure 3: Part 15 Label and Location