

Company: Rockwell Collins

Product Name: SSR-7610

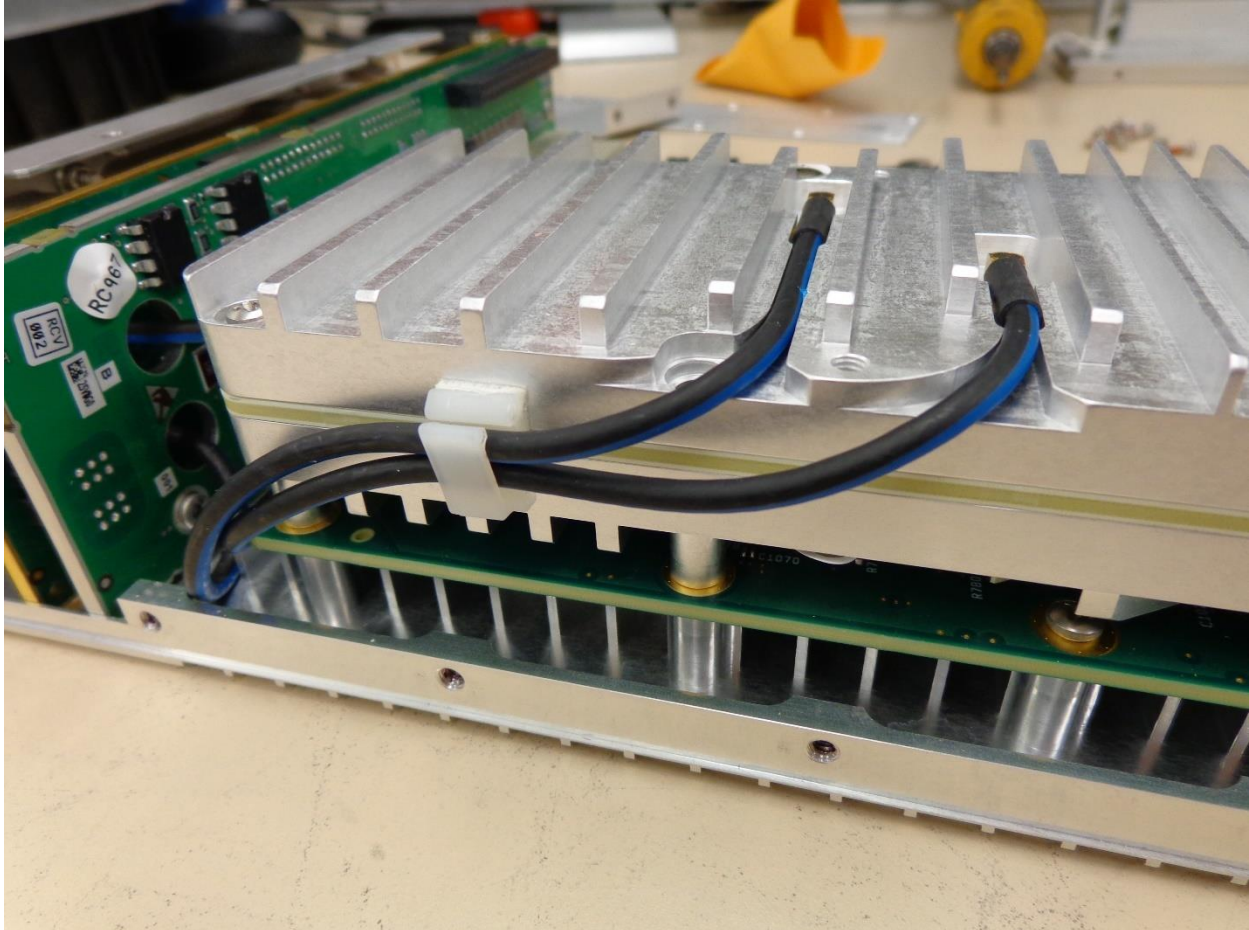
Report No.: ROCK25 – Internal Photos

PHOTOS - INTERNAL

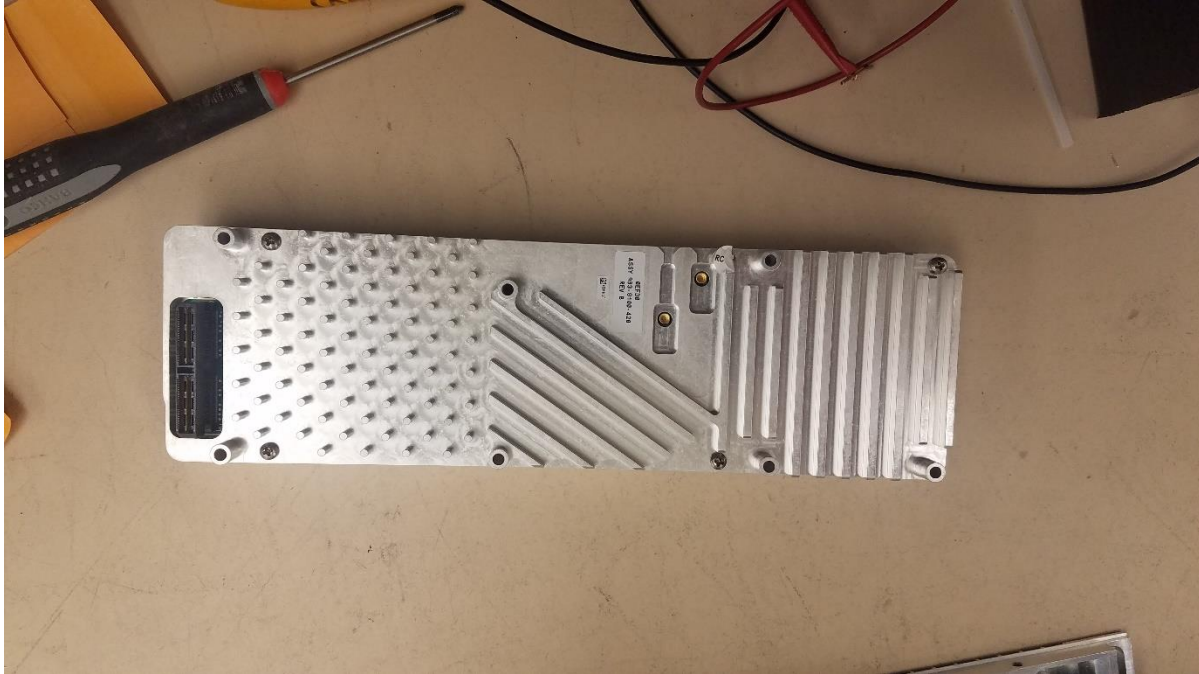


1. Internal Photographs

1.1.1. Product - Internal



Covered RF Card 1

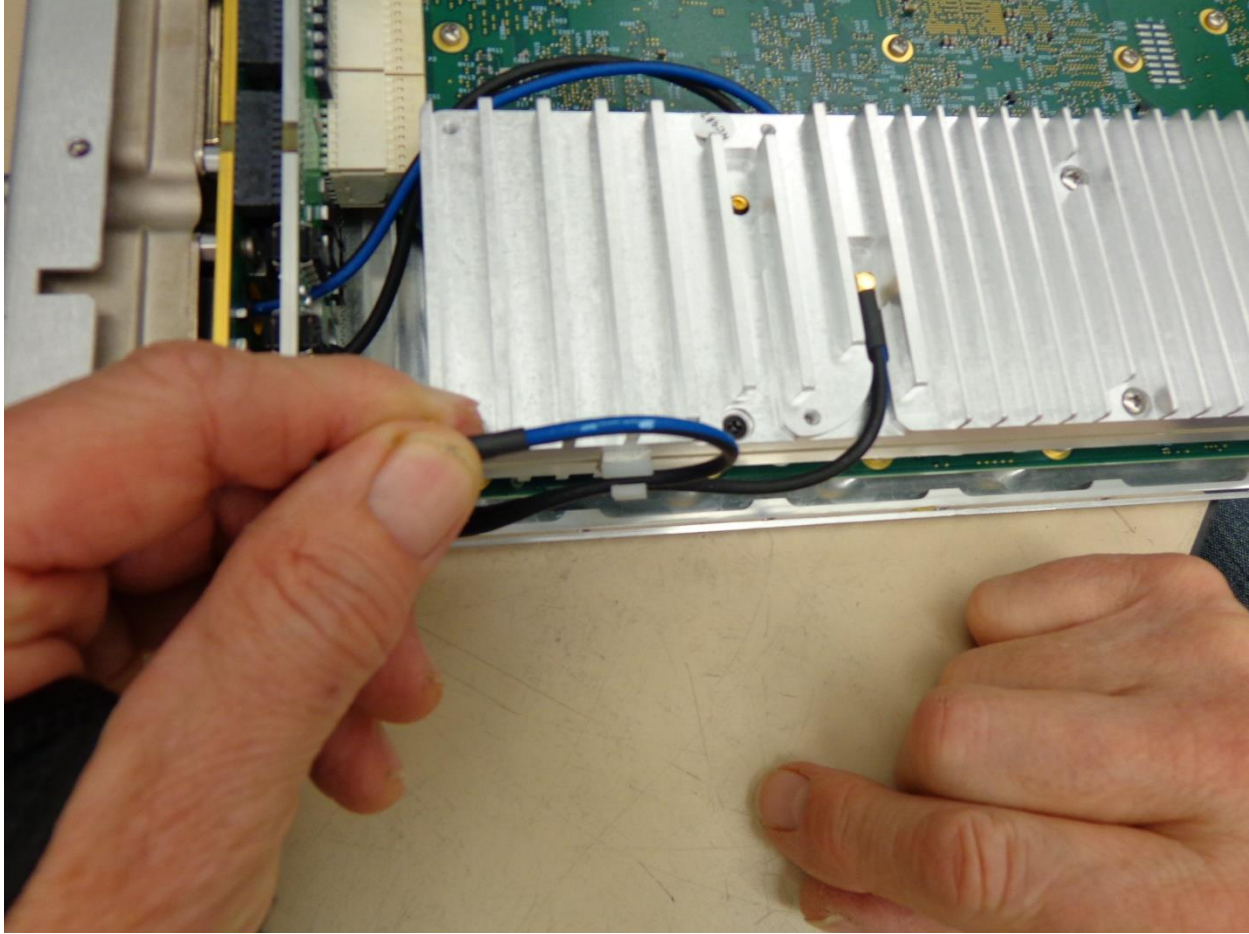


Covered RF Card Back

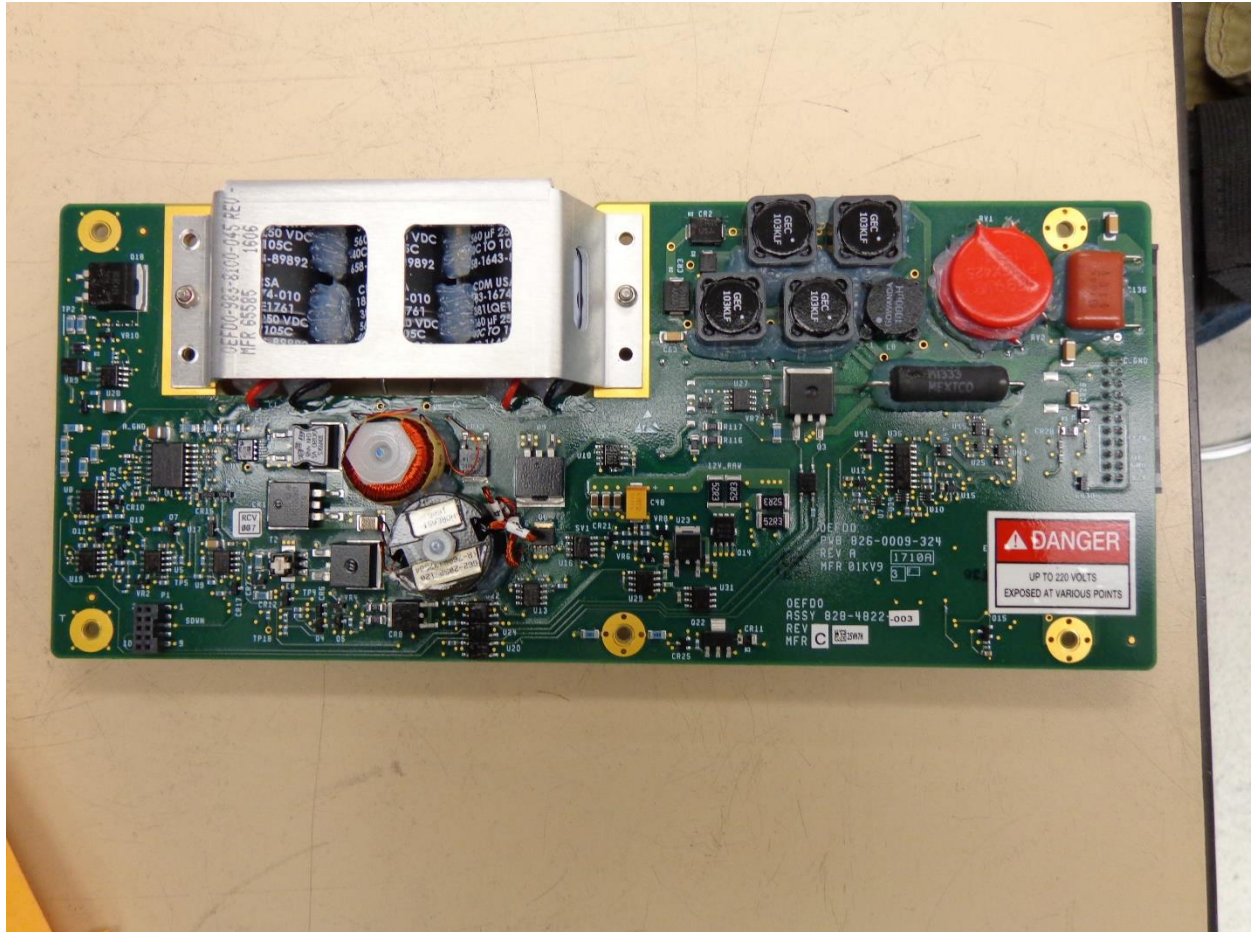


Covered RF Card Internal

This test report may be reproduced in full only. The document may only be updated by MiCOM Labs personnel. All changes will be noted in the Document History section of the report.

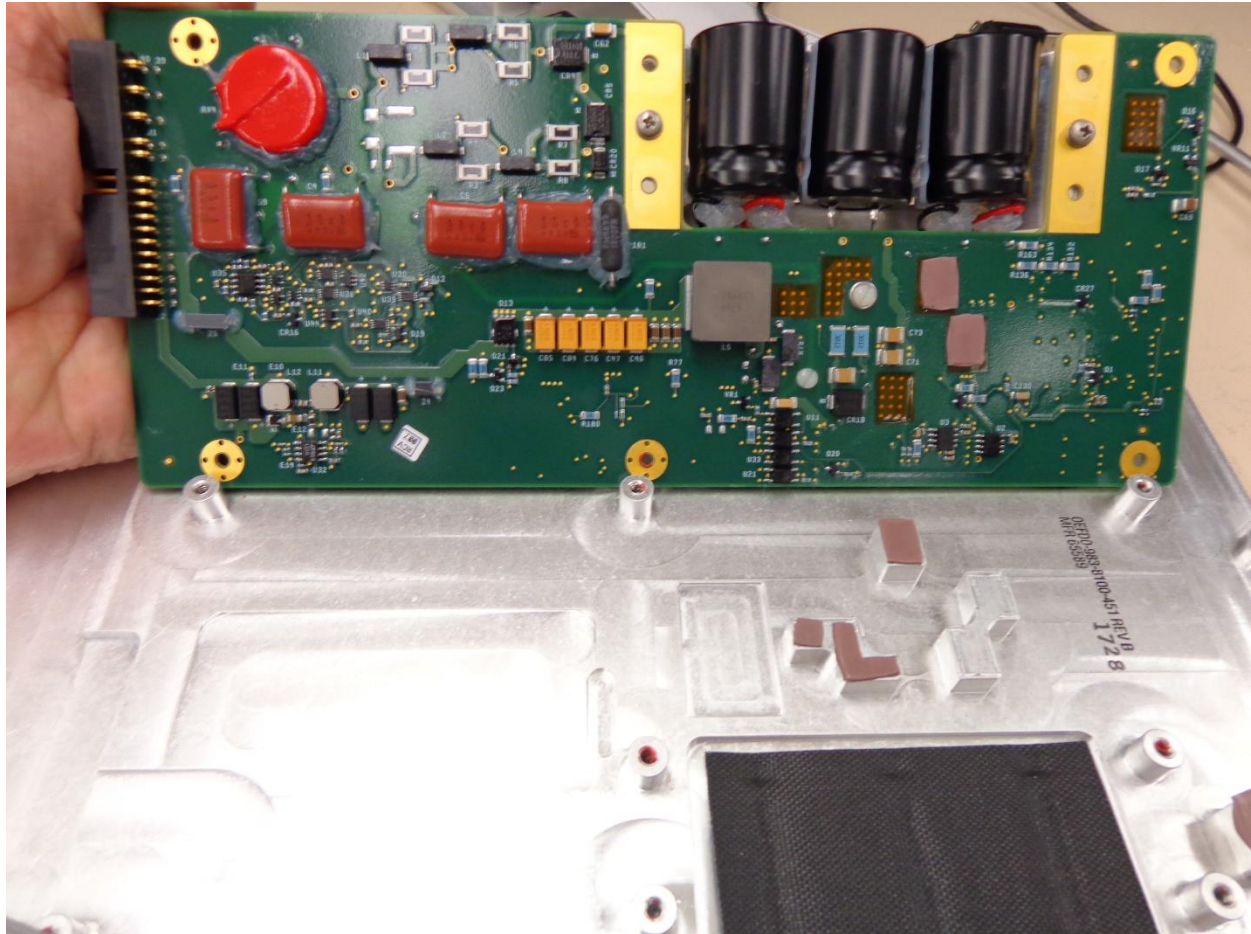


Covered RF Card Top



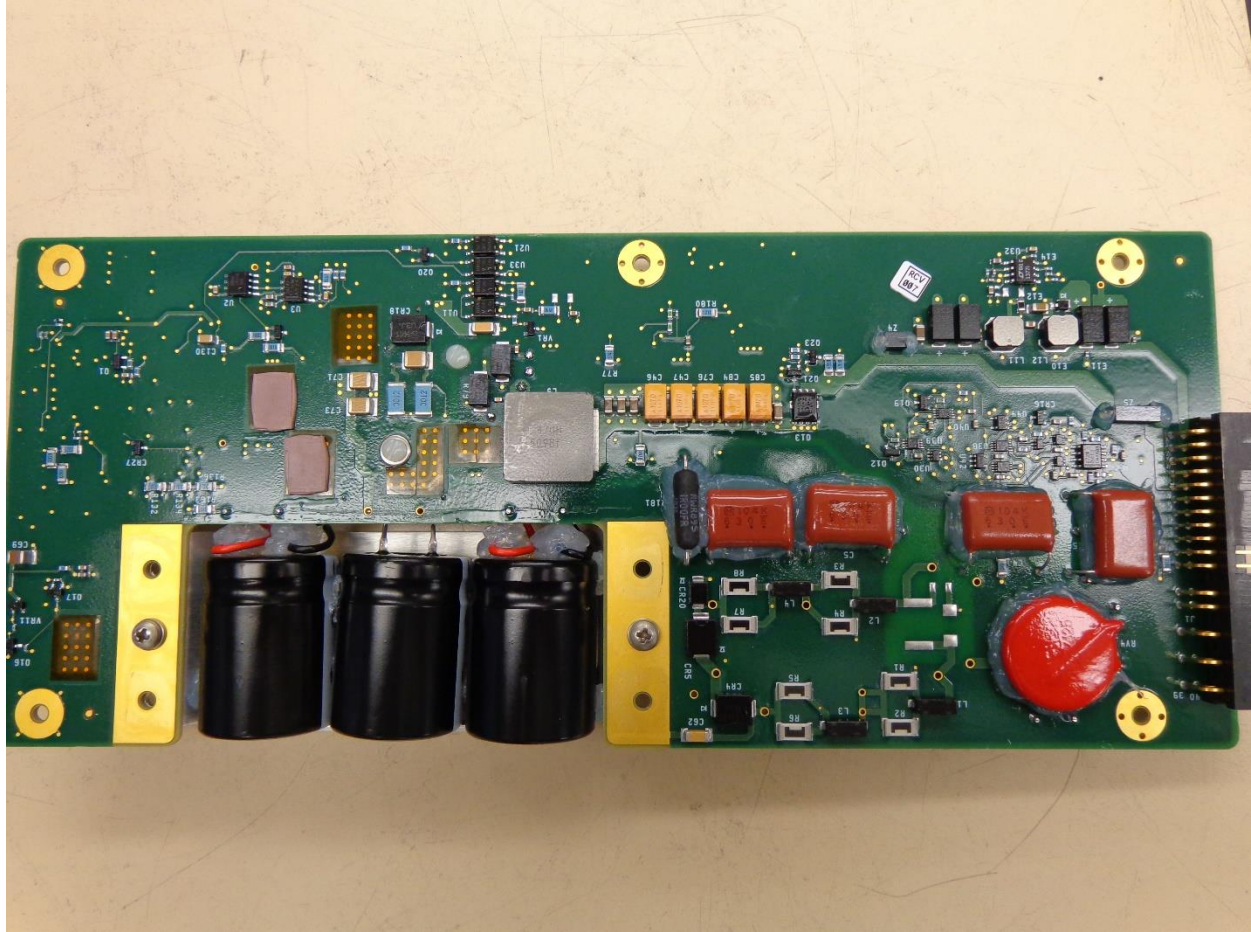
Power Supply Back

This test report may be reproduced in full only. The document may only be updated by MiCOM Labs personnel. All changes will be noted in the Document History section of the report.



Power Supply Back (2)

This test report may be reproduced in full only. The document may only be updated by MiCOM Labs personnel. All changes will be noted in the Document History section of the report.

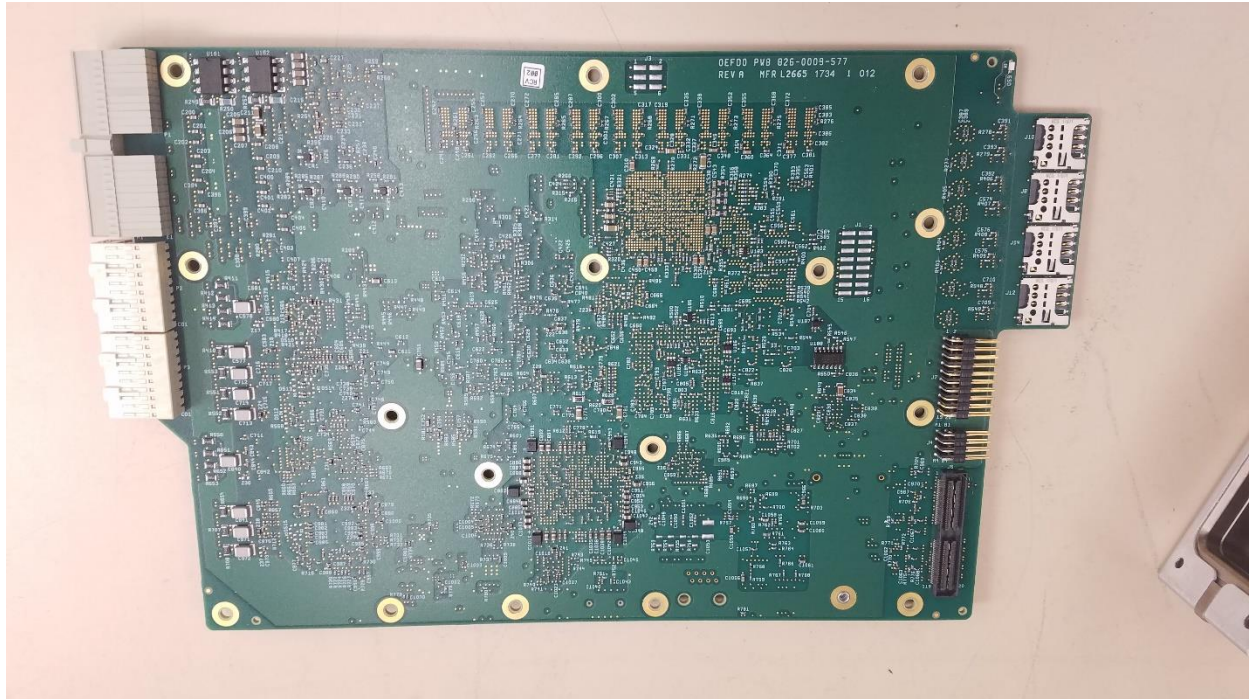


Power Supply Front

This test report may be reproduced in full only. The document may only be updated by MiCOM Labs personnel. All changes will be noted in the Document History section of the report.

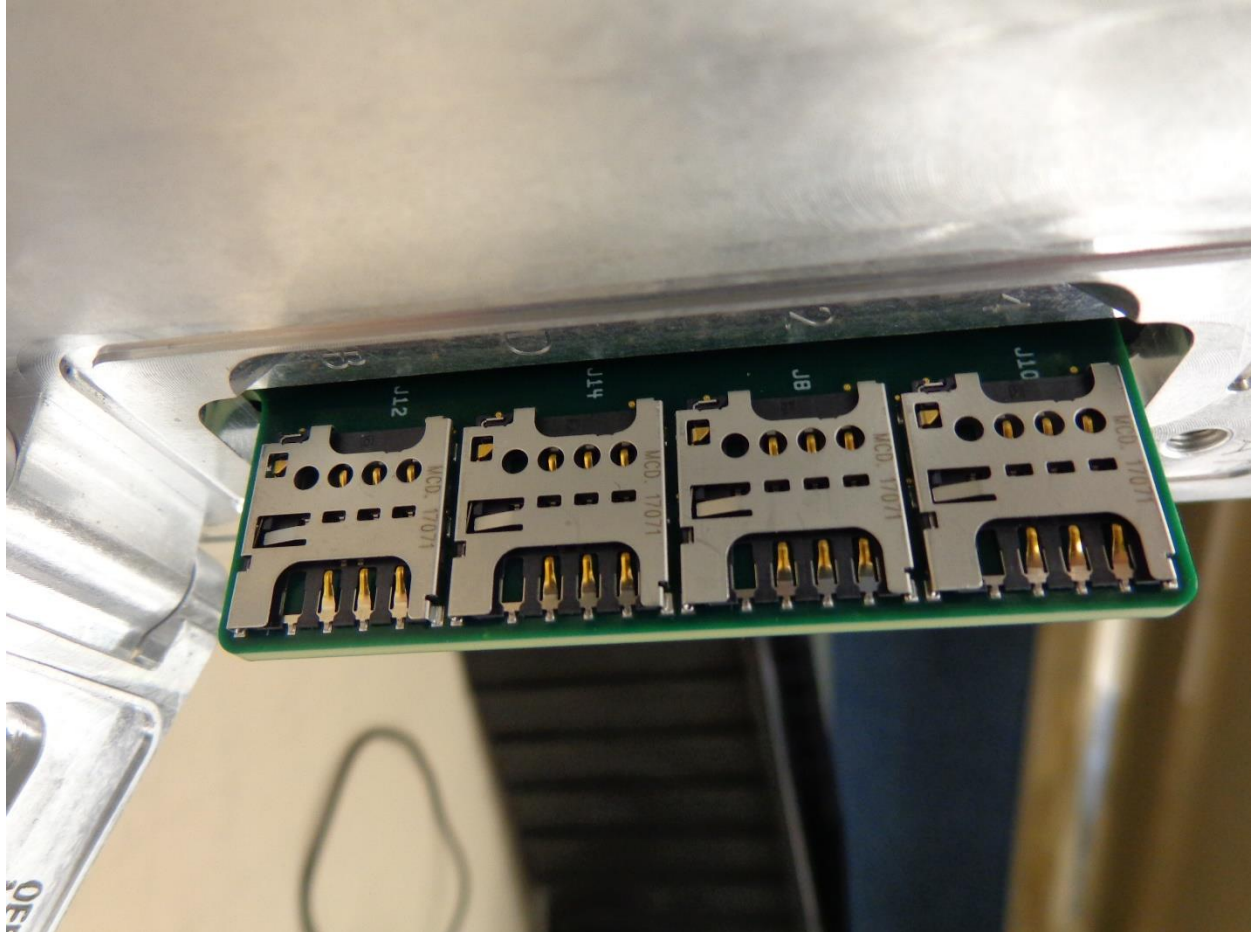


Title: ROCK25 - SSR-7610 Internal Photos
To:
Serial #:
Issue Date: 19 March 2018
Page: 8 of 14



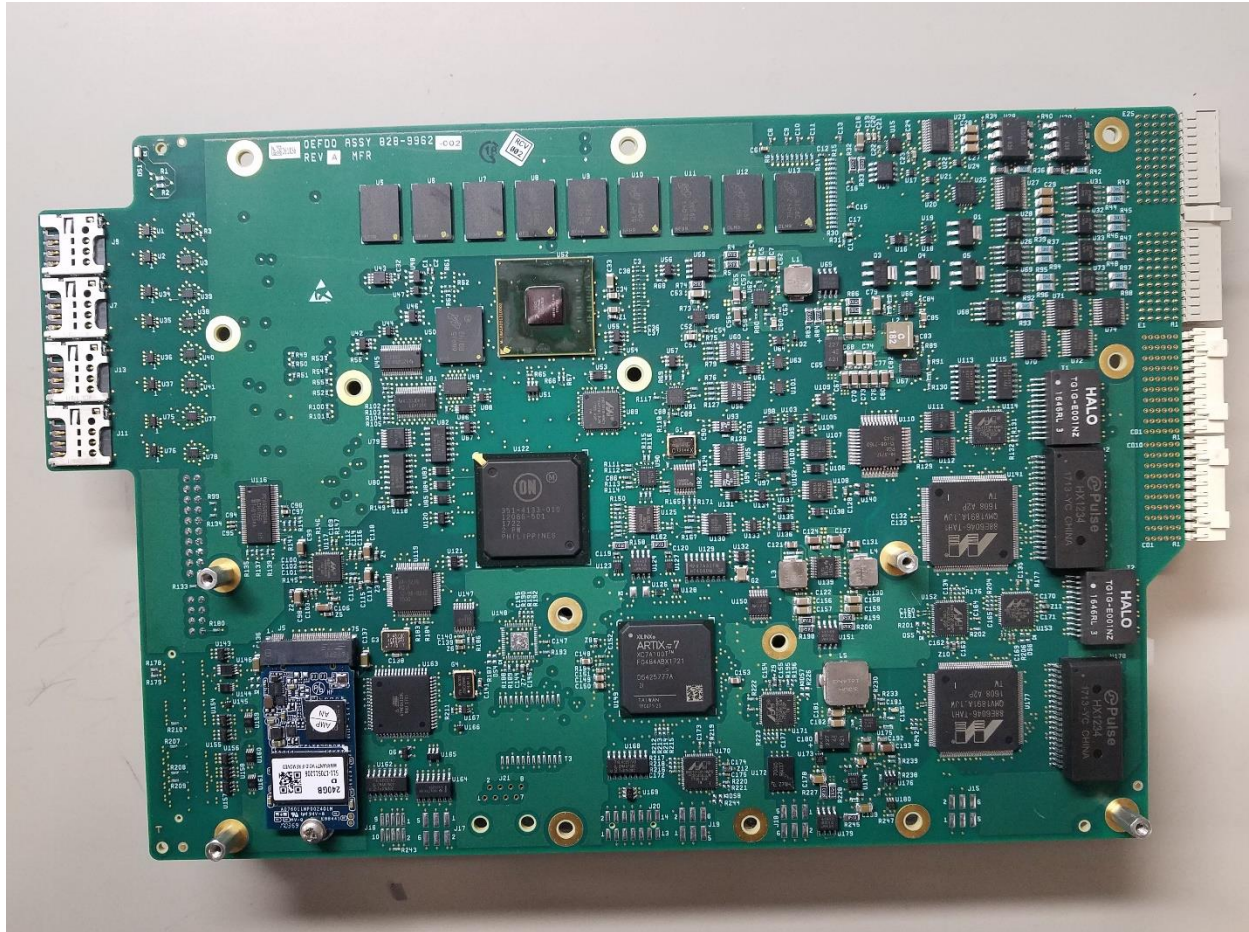
Processor Back

This test report may be reproduced in full only. The document may only be updated by MiCOM Labs personnel. All changes will be noted in the Document History section of the report.



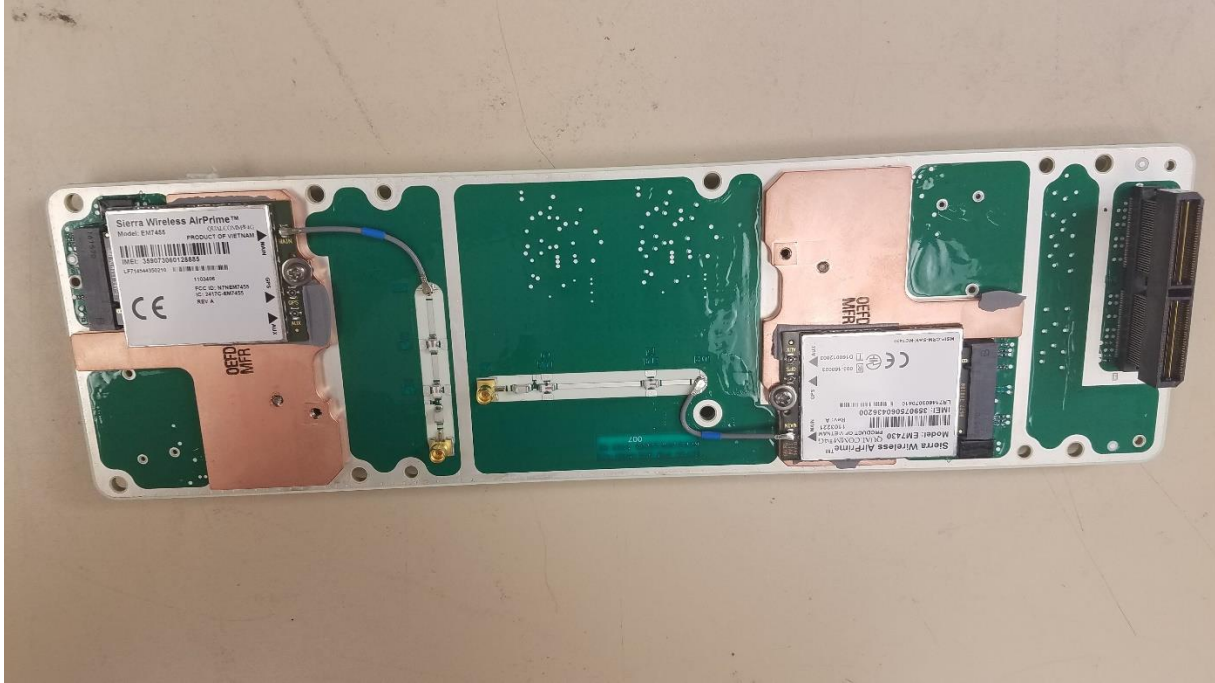
Processor Card SIMs

This test report may be reproduced in full only. The document may only be updated by MiCOM Labs personnel. All changes will be noted in the Document History section of the report.

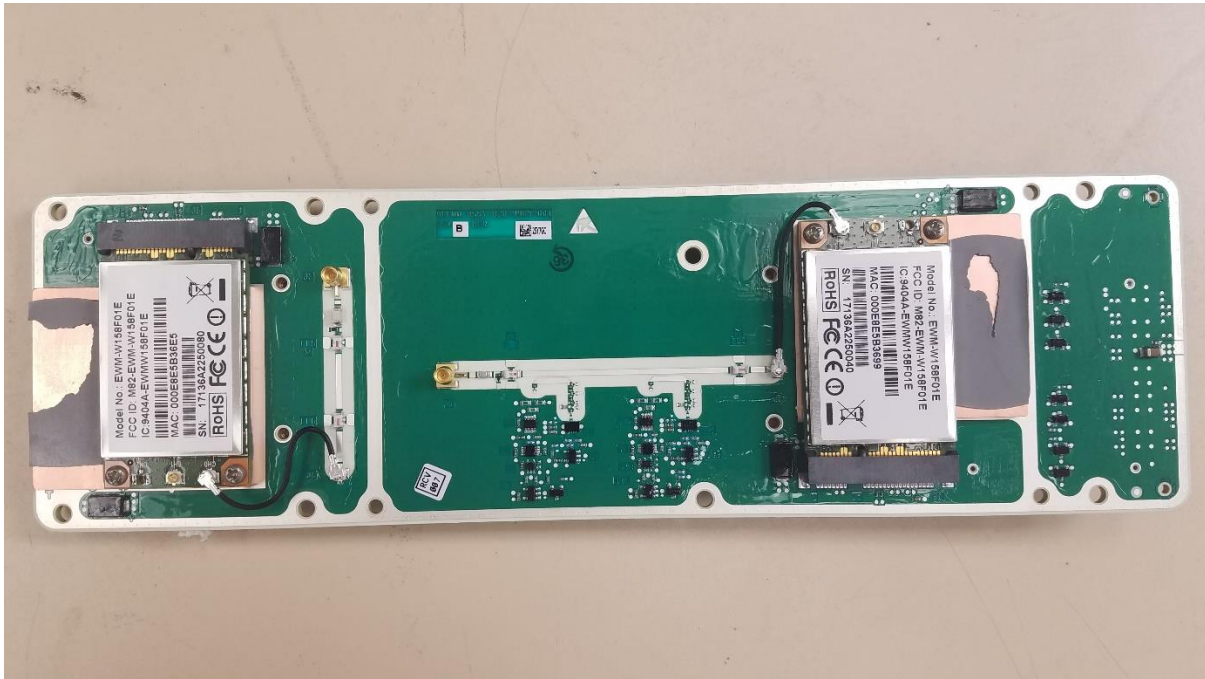


Processor Front

This test report may be reproduced in full only. The document may only be updated by MiCOM Labs personnel. All changes will be noted in the Document History section of the report.

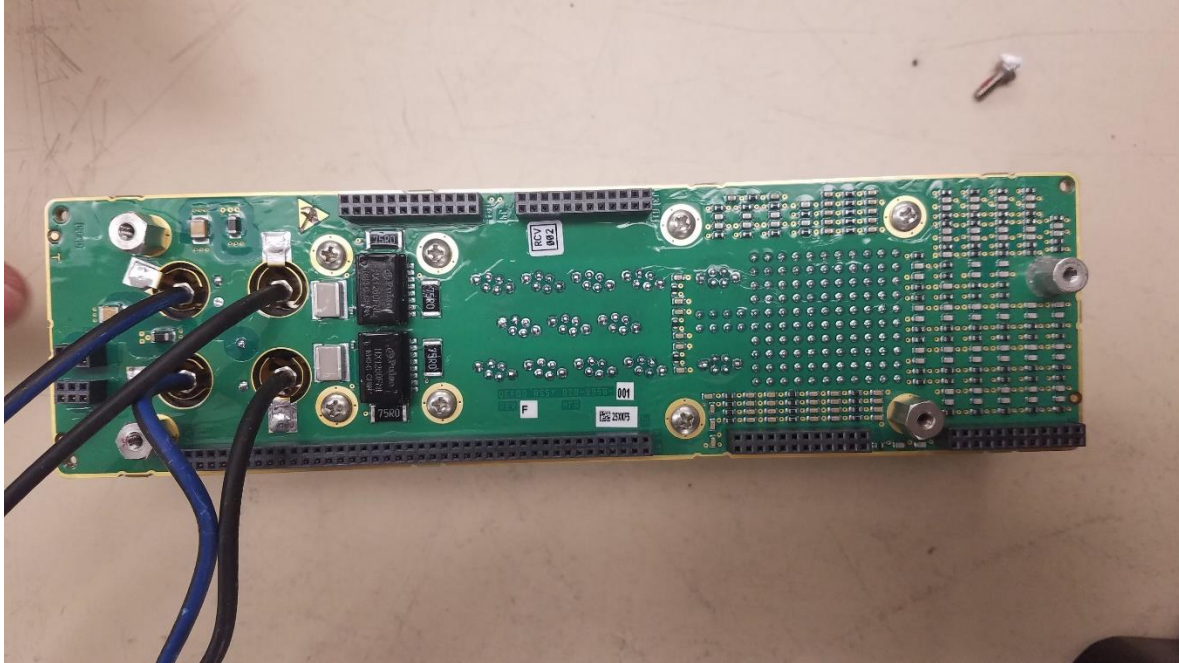


RF Card Bottom



RF Card Top

This test report may be reproduced in full only. The document may only be updated by MiCOM Labs personnel. All changes will be noted in the Document History section of the report.

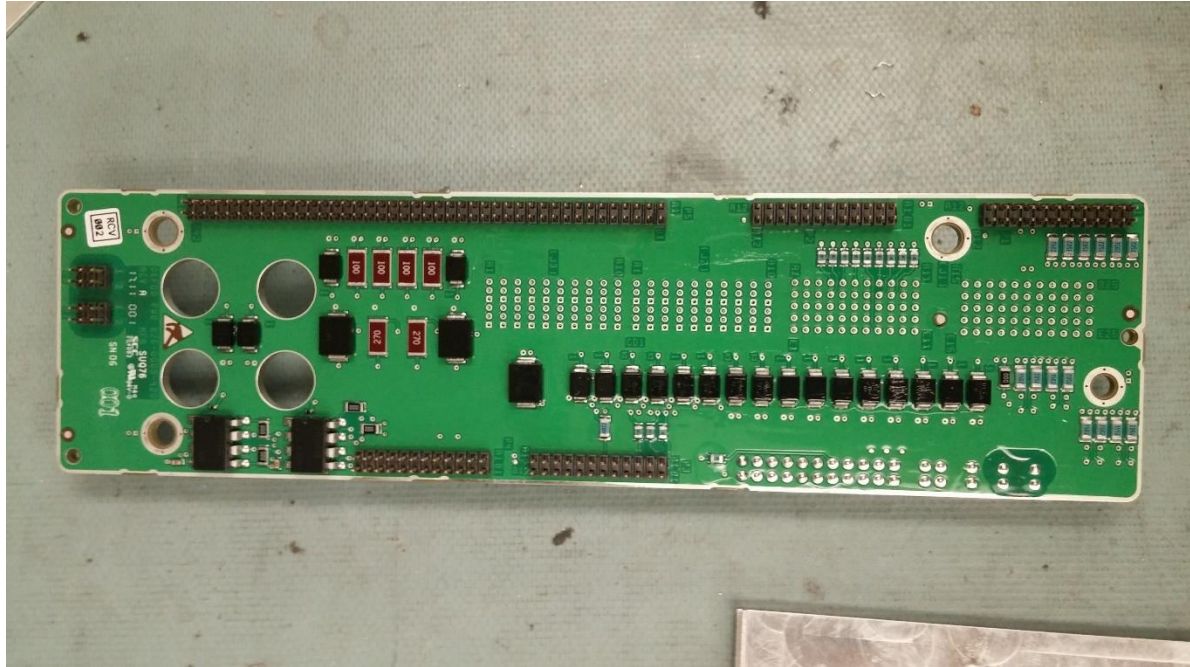


RIC Back

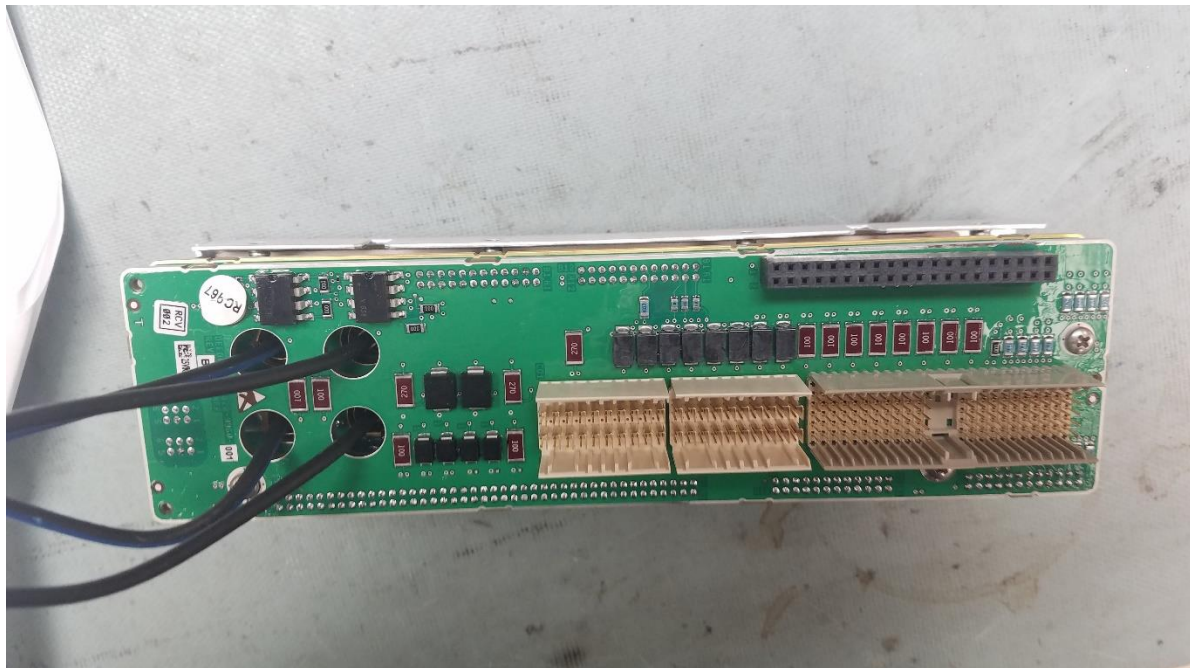


RIC Front 4 Silver Contacts are RF Signals BMA connectors

This test report may be reproduced in full only. The document may only be updated by MiCOM Labs personnel. All changes will be noted in the Document History section of the report.



SRIC Back



SRIC Front

This test report may be reproduced in full only. The document may only be updated by MiCOM Labs personnel. All changes will be noted in the Document History section of the report.



575 Boulder Court
Pleasanton, California 94566, USA
Tel: +1 (925) 462 0304
Fax: +1 (925) 462 0306
www.micomlabs.com