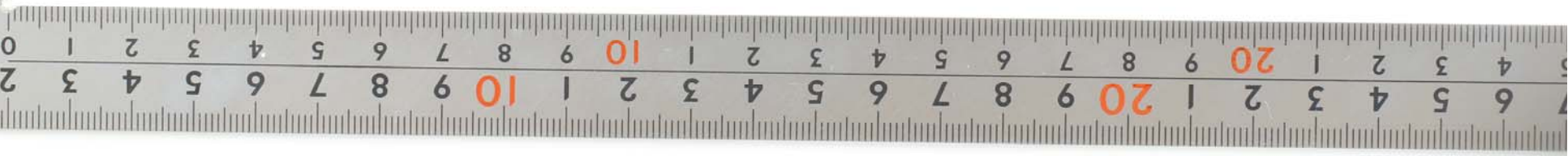


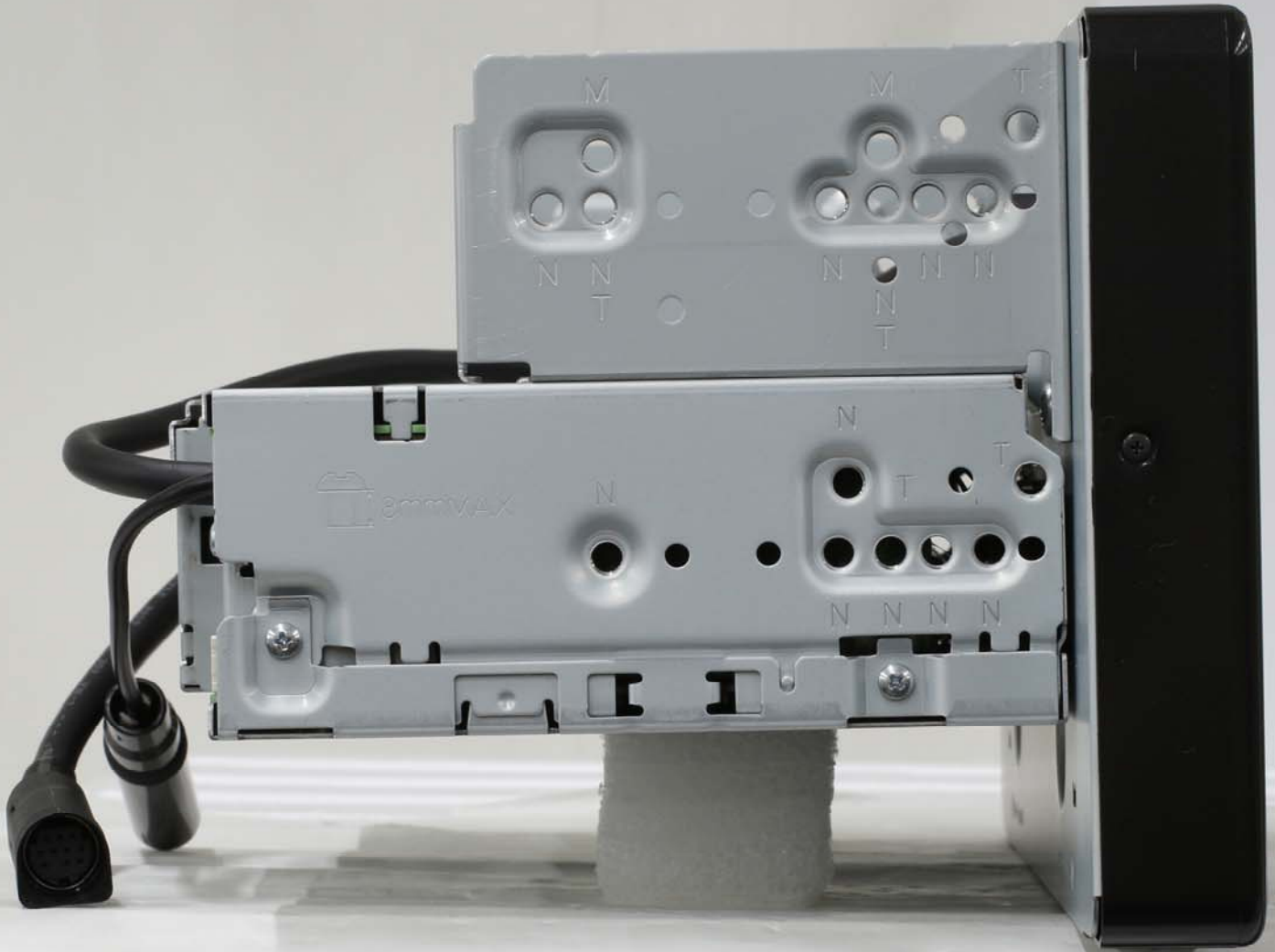
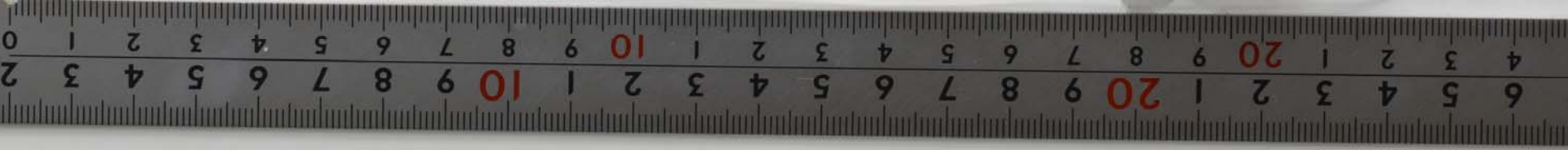


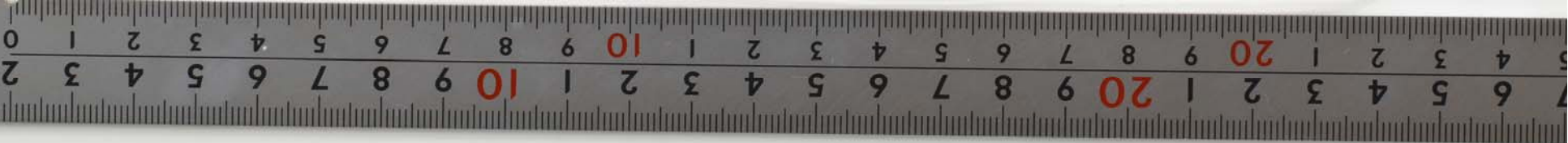
VOLUME
- + MODE SRC
MUTE MENU TOP MENU
ENTER
AUDIO SUB TITLE ANGLE RETURN
ESC BAND FOLDER/P.CH

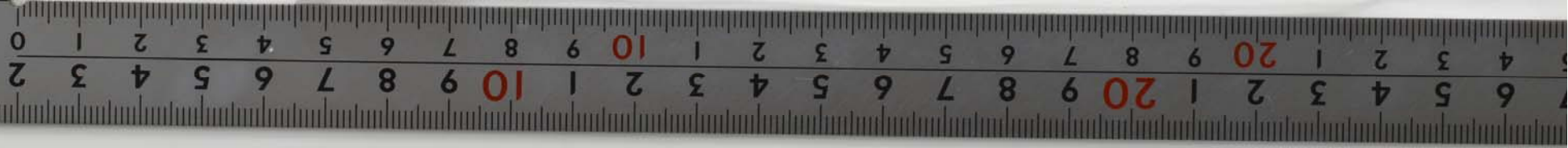
Pioneer
REMOTE CONTROLLER
CXE5116

Pioneer











Pioneer DMH-WC6600NEX **XNUC** DC: 14.4 V GROUND C.C. 14.4 V MASSE

This device complies with part 15 of the FCC Rules. Operation is subject to the following two conditions: (1) This device may not cause harmful interference, and (2) This device must accept any interference received, including interference that may cause undesired operation.

Manufactured under license from Dolby Laboratories. Dolby, Dolby Audio and the double-D symbol are trademarks of Dolby Laboratories.

DivX, DivX Certified and associated logos are trademarks of DivX, LLC and are used under license. Covered by one or more of the following U.S. patents: 6,731,369, 6,369,687, and RE45,052.

8 84938 44441 5

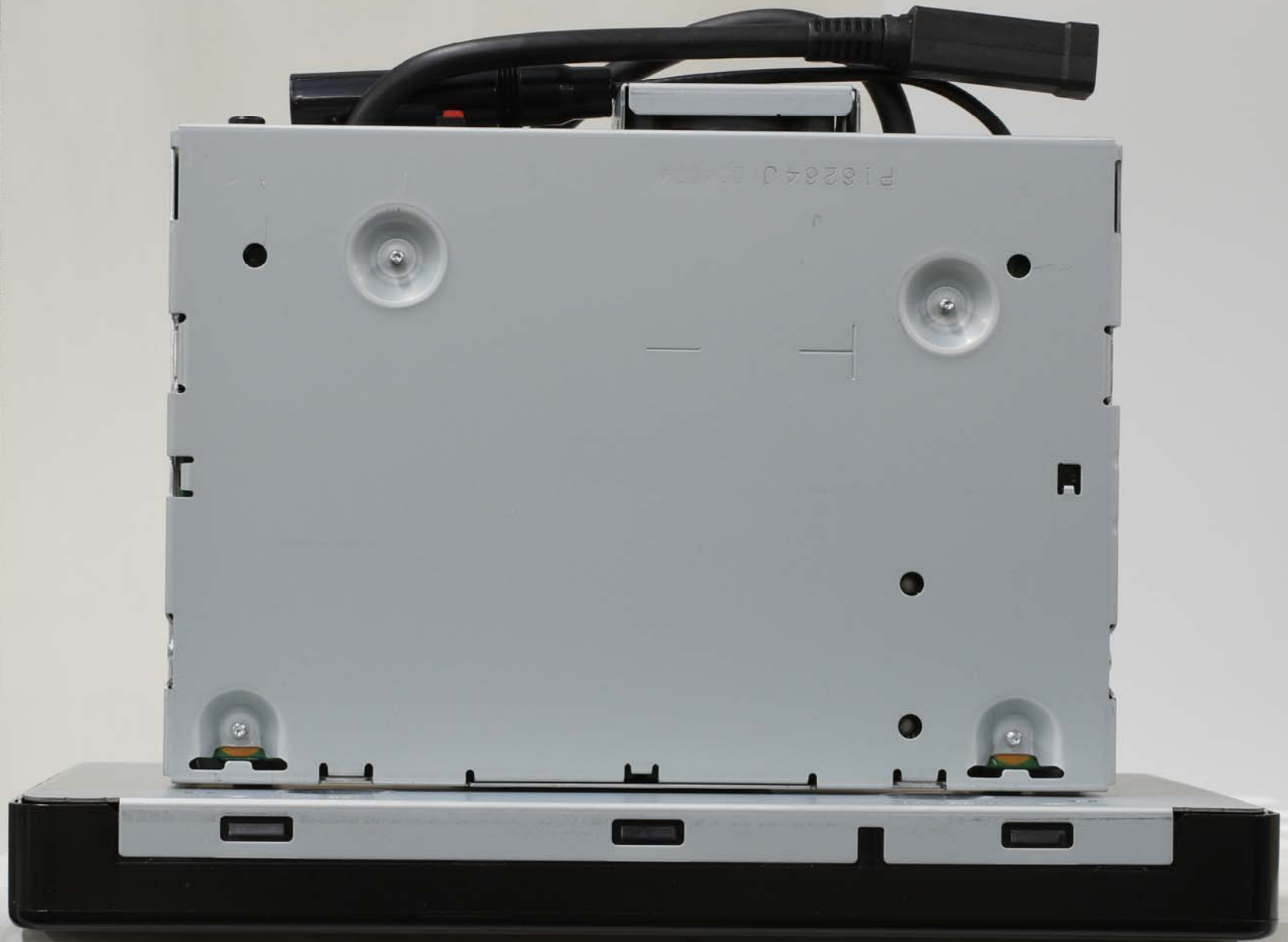
FCC ID: AJD****
IC: 775E****

MADE IN THAILAND/FABRIQUÉ EN THAÏLANDE **PIONEER CORPORATION** <CAV1315-A>

MFD. JULY 2019 DMH-WC6600NEX /XNUC
SER. NO. SGTM000033UC



20
19
18
17
16
15
14
13
12
11
10
9
8
7
6
5
4
3
2
1
0
1
2
3
4
5
6
7
8
9
10
11
12
13
14
15
16
17
18
19
20



P16264J 134074

7
6
5
4
3
2
1
20
19
18
17
16
15
14
13
12
11
10
9
8
7
6
5
4
3
2
1
0
1
2
3
4
5
6
7
8
9
10
11
12
13
14
15
16
17
18
19
20