

Label Drawing



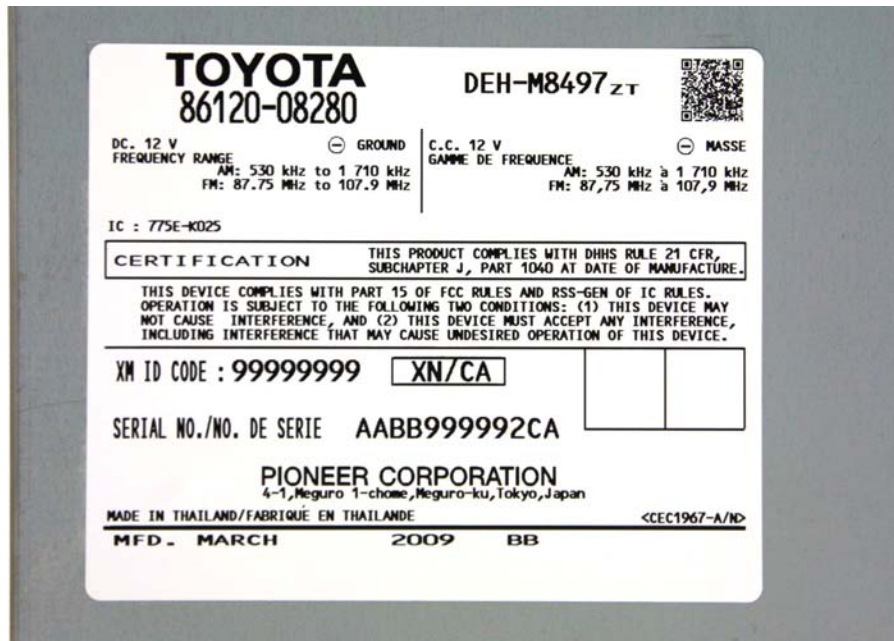
DEX-MG8697 for FCC



DEX-MG8697 for IC




DEH-M8497 for FCC



DEH-M8497 for IC

**TOYOTA**  
86120-35450

DEX-MG8097 ZT 

DC /C.C./c.c. 12V ⊖ GROUND/⊖ TIERRA C.C. 12V ⊖ MASSE  
 FREQUENCY RANGE AM: 530 kHz to 1 710 kHz GAMME DE FREQUENCE AM: 530 kHz à 1 710 kHz  
 FM: 87.75 MHz to 107.9 MHz FM: 87,75 MHz à 107,9 MHz  
 FCC ID : AJDK025

**CERTIFICATION**  
 THIS PRODUCT COMPLIES WITH DHHS RULE 21 CFR,  
 SUBCHAPTER J, PART 1040 AT DATE OF MANUFACTURE

This device complies with Part 15 of FCC Rules.  
 Operation is subject to the following two conditions: (1) this device may not cause interference, and (2) this device must accept any interference, including interference that may cause undesired operation of this device.

XM ID CODE: 12345678


SERIAL NO./NO. DE SERIE ABB999999US

**PIONEER CORPORATION**  
 4-1, Meguro 1-chome, Meguro-ku, Tokyo, Japan  
 MADE IN JAPAN/FABRIQUÉ AU JAPON <CEC1622-A>

MFD. FEBRUARY 2009 PK

DEX-MG8097 for FCC

**TOYOTA**  
86120-35470

DEX-MG8097 ZT 

DC 12V ⊖ GROUND C.C. 12V ⊖ MASSE  
 FREQUENCY RANGE AM: 530 kHz to 1 710 kHz GAMME DE FREQUENCE AM: 530 kHz à 1 710 kHz  
 FM: 87.75 MHz to 107.9 MHz FM: 87,75 MHz à 107,9 MHz  
 IC : 775E-K025

**CERTIFICATION**  
 THIS PRODUCT COMPLIES WITH DHHS RULE 21 CFR,  
 SUBCHAPTER J, PART 1040 AT DATE OF MANUFACTURE

This device complies with Part 15 of FCC Rules and RSS-Gen of IC Rules.  
 Operation is subject to the following two conditions: (1) this device may not cause interference, and (2) this device must accept any interference, including interference that may cause undesired operation of this device.


XM ID CODE: 12345678

SERIAL NO./NO. DE SERIE ABB999999CA

**PIONEER CORPORATION**  
 4-1, Meguro 1-chome, Meguro-ku, Tokyo, Japan  
 MADE IN JAPAN/FABRIQUÉ AU JAPON <CEC1623-A>

MFD. FEBRUARY 2009 PK

DEX-MG8097 for IC

**TOYOTA** DEX-MG9097 ZT 

86120-35460

DC./C.C./c.c.12V ⊖ GROUND/⊖ TIERRA C.C.12V ⊖ MASSE  
 FREQUENCY RANGE AM: 530 kHz to 1 710 kHz GAMME DE FREQUENCE AM: 530 kHz à 1 710 kHz  
 FM: 87.75 MHz to 107.9 MHz FM: 87,75 MHz à 107,9 MHz  
 FCC ID : AJDK025

**CERTIFICATION**  
 THIS PRODUCT COMPLIES WITH DHS RULE 21 CFR,  
 SUBCHAPTER J, PART 1040 AT DATE OF MANUFACTURE

This device complies with Part 15 of FCC Rules  
 Operation is subject to the following two conditions: (1) this device may  
 not cause interference, and (2) this device must accept any interference,  
 including interference that may cause undesired operation of this device.


XM ID CODE: 12345678

SERIAL NO./NO. DE SERIE AABB999999US

**PIONEER CORPORATION**  
 4-1, Meguro 1-chome, Meguro-ku, Tokyo, Japan  
 MADE IN JAPAN/FABRIQUÉ AU JAPON <CEC1626-A>

MFD. FEBRUARY 2009 PK

DEX-MG9097 for FCC

**TOYOTA** DEX-MG9097 ZT 

86120-35480

DC.12V ⊖ GROUND C.C.12V ⊖ MASSE  
 FREQUENCY RANGE AM: 530 kHz to 1 710 kHz GAMME DE FREQUENCE AM: 530 kHz à 1 710 kHz  
 FM: 87.75 MHz to 107.9 MHz FM: 87,75 MHz à 107,9 MHz  
 IC : 775E-K025

**CERTIFICATION**  
 THIS PRODUCT COMPLIES WITH DHS RULE 21 CFR,  
 SUBCHAPTER J, PART 1040 AT DATE OF MANUFACTURE

This device complies with Part 15 of FCC Rules and RSS-Gen of IC Rules  
 Operation is subject to the following two conditions: (1) this device may  
 not cause interference, and (2) this device must accept any interference,  
 including interference that may cause undesired operation of this device.

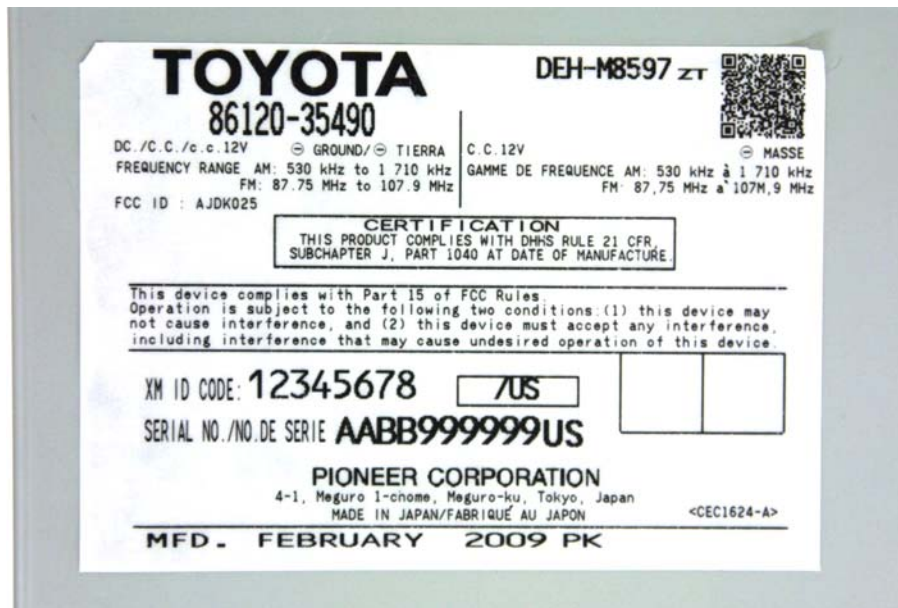
XM ID CODE: 12345678

SERIAL NO./NO. DE SERIE AABB999999CA

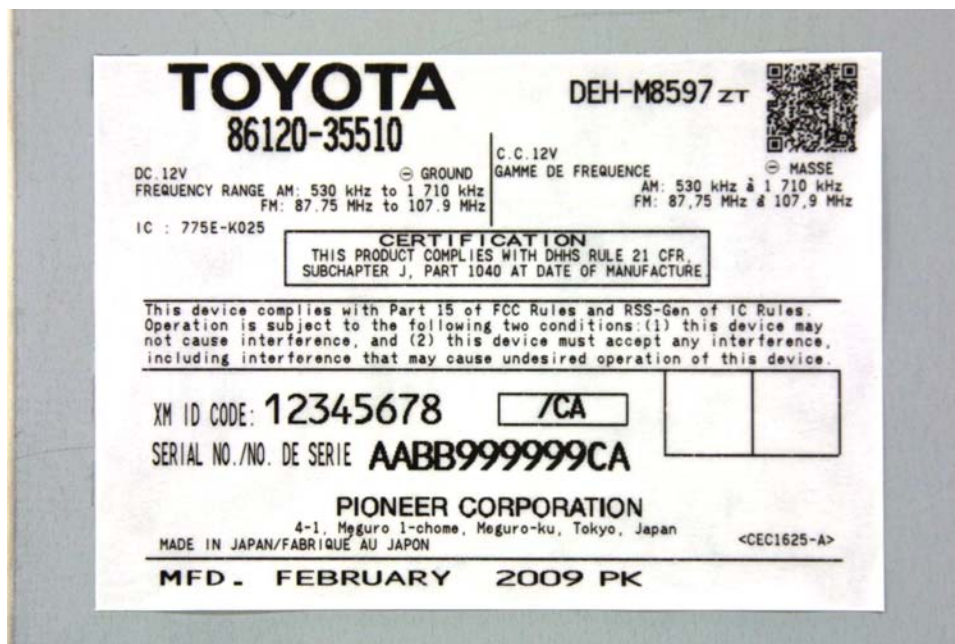
**PIONEER CORPORATION**  
 4-1, Meguro 1-chome, Meguro-ku, Tokyo, Japan  
 MADE IN JAPAN/FABRIQUÉ AU JAPON <CEC1627-A>

MFD. FEBRUARY 2009 PK


DEX-MG9097 for IC



DEH-M8597 for FCC



DEH-M8597 for IC

**TOYOTA** DEH-M9597 ZT 

86120-35500

DC./C.C./c.c. 12V ⊖ GROUND/⊖ TIERRA C.C. 12V ⊖ MASSE  
 FREQUENCY RANGE AM: 530 kHz to 1 710 kHz GAMME DE FREQUENCE AM: 530 kHz à 1 710 kHz  
 FM: 87.75 MHz to 107.9 MHz FM: 87.75 MHz à 107.9 MHz  
 FCC ID : AJDK025

**CERTIFICATION**  
 THIS PRODUCT COMPLIES WITH DHHS RULE 21 CFR,  
 SUBCHAPTER J, PART 1040 AT DATE OF MANUFACTURE.

This device complies with Part 15 of FCC Rules  
 Operation is subject to the following two conditions: (1) this device may  
 not cause interference, and (2) this device must accept any interference,  
 including interference that may cause undesired operation of this device.


XM ID CODE: 12345678

SERIAL NO./NO. DE SERIE AABB999999US

**PIONEER CORPORATION**  
 4-1, Meguro 1-chome, Meguro-ku, Tokyo, Japan  
 MADE IN JAPAN/FABRIQUÉ AU JAPON <CEC1628-A>

MFD. FEBRUARY 2009 PK

DEH-M9597 for FCC

**TOYOTA** DEH-M9597 ZT 

86120-35520

DC. 12V ⊖ GROUND C.C. 12V ⊖ MASSE  
 FREQUENCY RANGE AM: 530 kHz to 1 710 kHz GAMME DE FREQUENCE AM: 530 kHz à 1 710 kHz  
 FM: 87.75 MHz to 107.9 MHz FM: 87.75 MHz à 107.9 MHz  
 IC : 775E-K025

**CERTIFICATION**  
 THIS PRODUCT COMPLIES WITH DHHS RULE 21 CFR,  
 SUBCHAPTER J, PART 1040 AT DATE OF MANUFACTURE.

This device complies with Part 15 of FCC Rules and RSS-Gen of IC Rules.  
 Operation is subject to the following two conditions: (1) this device may  
 not cause interference, and (2) this device must accept any interference,  
 including interference that may cause undesired operation of this device.

XM ID CODE: 12345678

SERIAL NO./NO. DE SERIE AABB999999CA

**PIONEER CORPORATION**  
 4-1, Meguro 1-chome, Meguro-ku, Tokyo, Japan  
 MADE IN JAPAN/FABRIQUÉ AU JAPON <CEC1629-A>

MFD. FEBRUARY 2009 PK

DEH-M9597 for IC