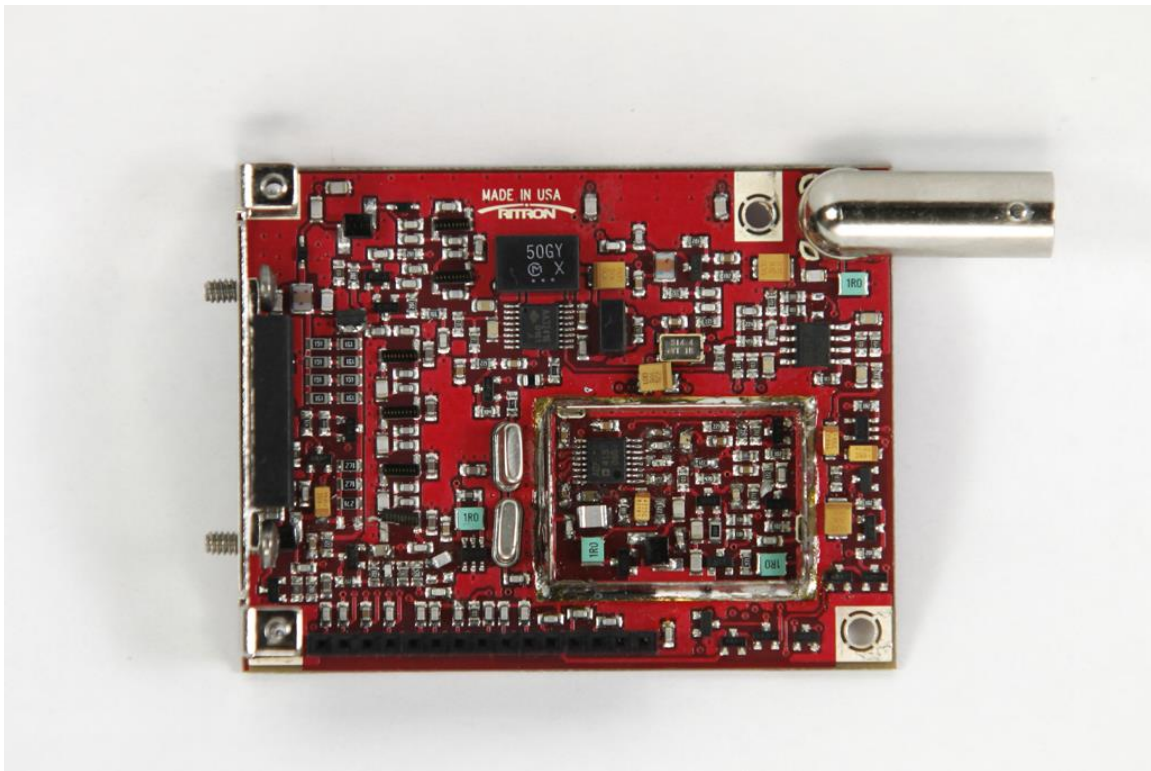
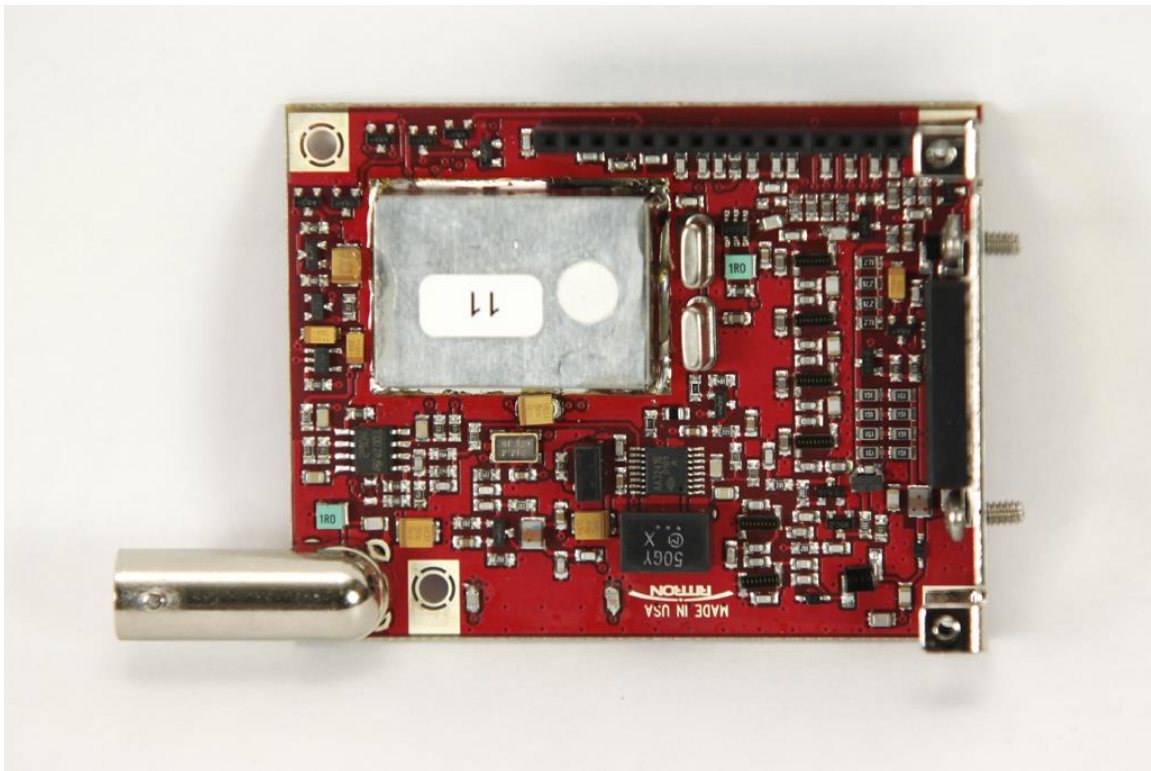


<b>TYPE OF EXHIBIT:</b>	PHOTOGRAPHS-INTERNAL
<b>FCC PART:</b>	2.1033(c)(12)
<b>MANUFACTURER:</b>	RITRON, Inc.
<b>MODEL:</b>	DTXM-460
<b>TYPE OF UNIT:</b>	UHF Modem Module
<b>FCC ID:</b>	AIERIT39-46006
<b>DATE:</b>	July 24, 2014

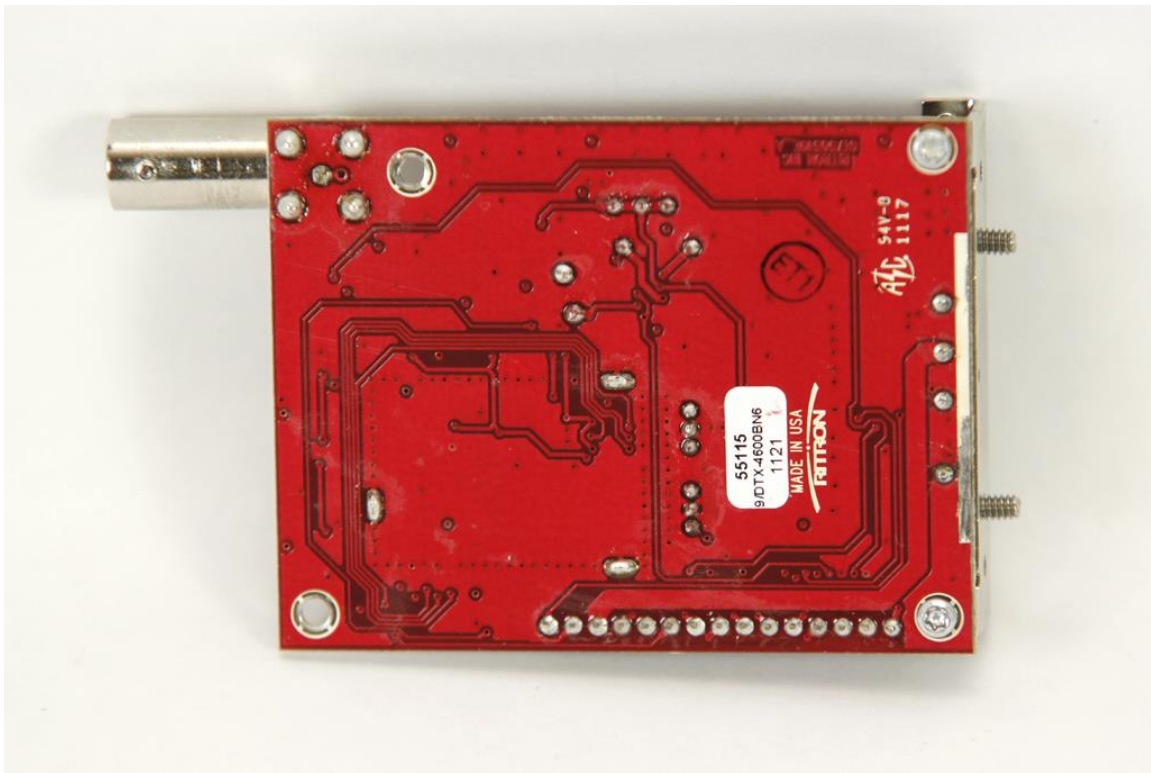
Internal views of the unit follow:



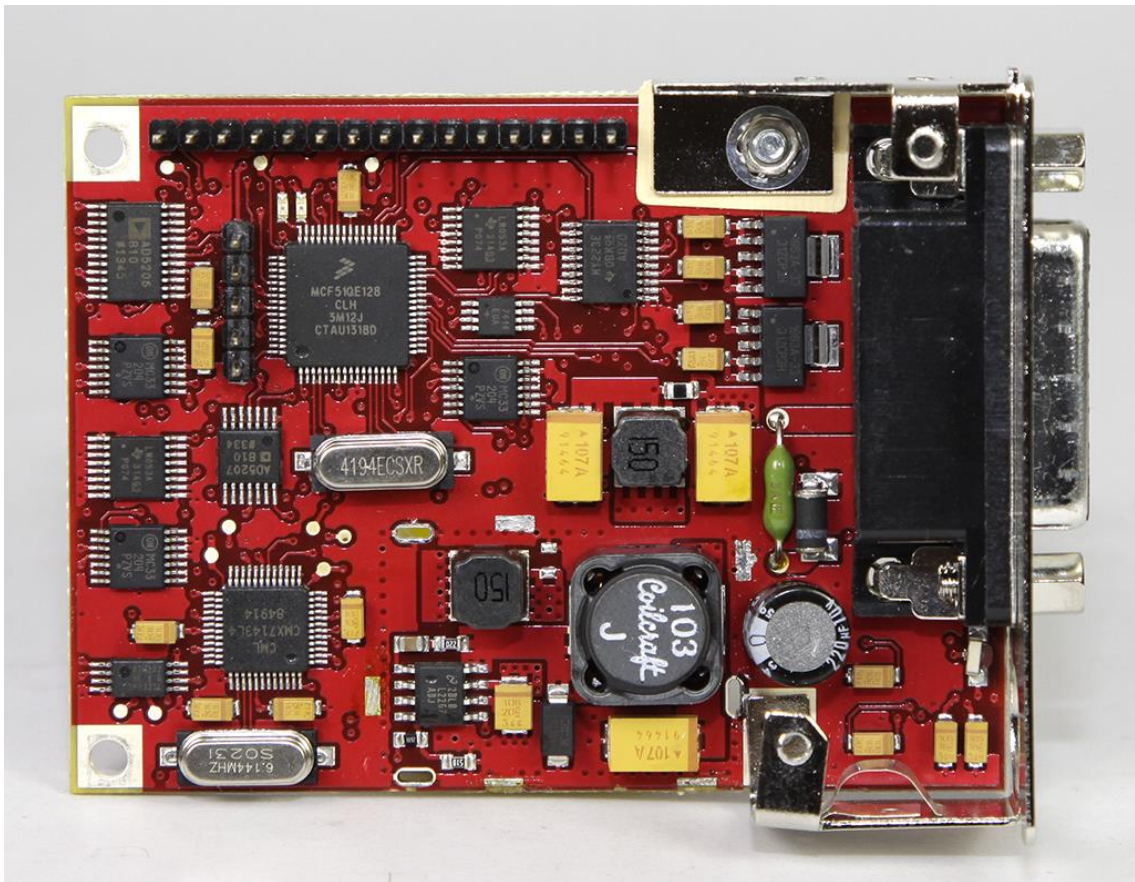
RF Board-Component Side, shields removed



RF Board-Component side with shields

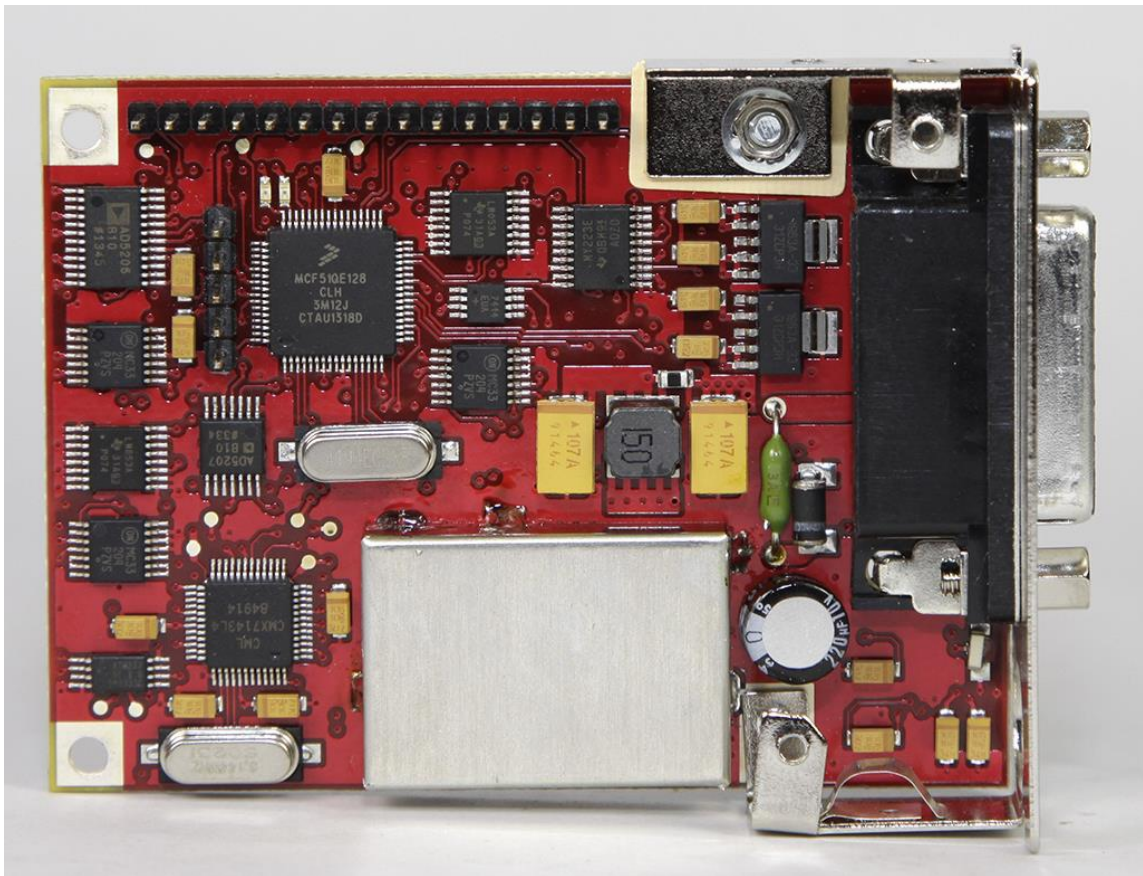


RF Board-Solder Side

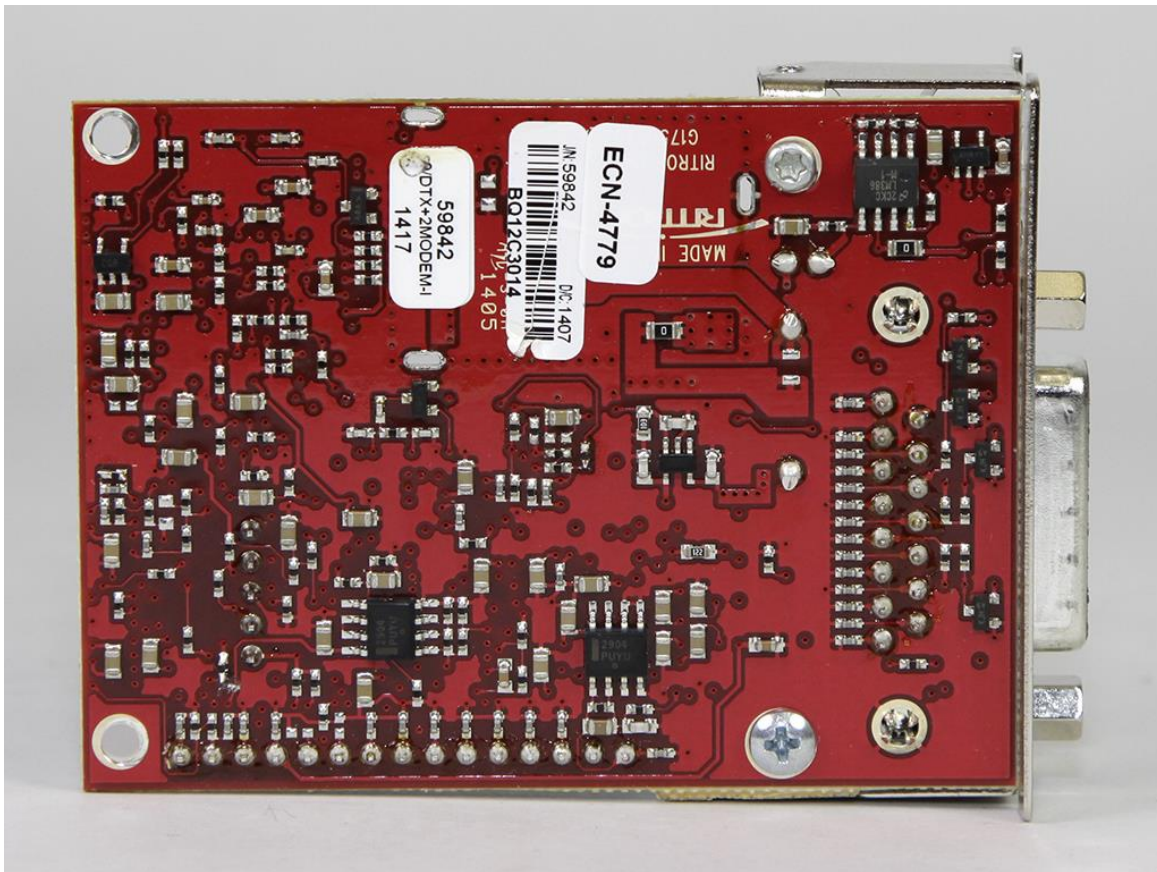


Modem Board-Component Side, shields removed

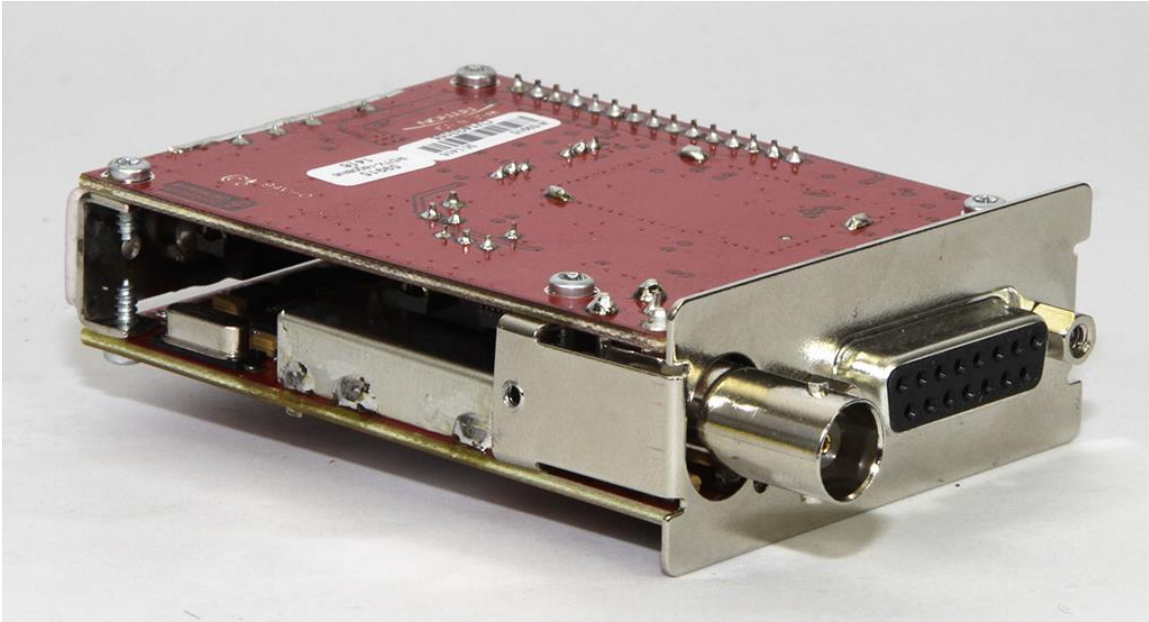




Modem Board-Component Side with shields



Modem Board-Solder Side



Modem and RF Boards mated