

TYPE OF EXHIBIT:	INTERNAL PHOTOGRAPHS
FCC PART:	2.1033(c)(12)
MANUFACTURER:	RITRON, INC.
MODELS:	RQX-156M, RQX-156M-XT
TYPE OF UNIT:	MURS VHF-FM Callbox 2-Way Radio
FCC ID:	AIERIT38-156M
DATE:	August 21, 2014

Included in this exhibit are photographs of the RITRON Model RQX-156M printed circuit board assembly and installation.

Additional photographs of the radio construction and layout, labels, and chassis assembly are included with this certification request as separate exhibits.

SIGNED: 
Michael A. Pickard - Project Engineer

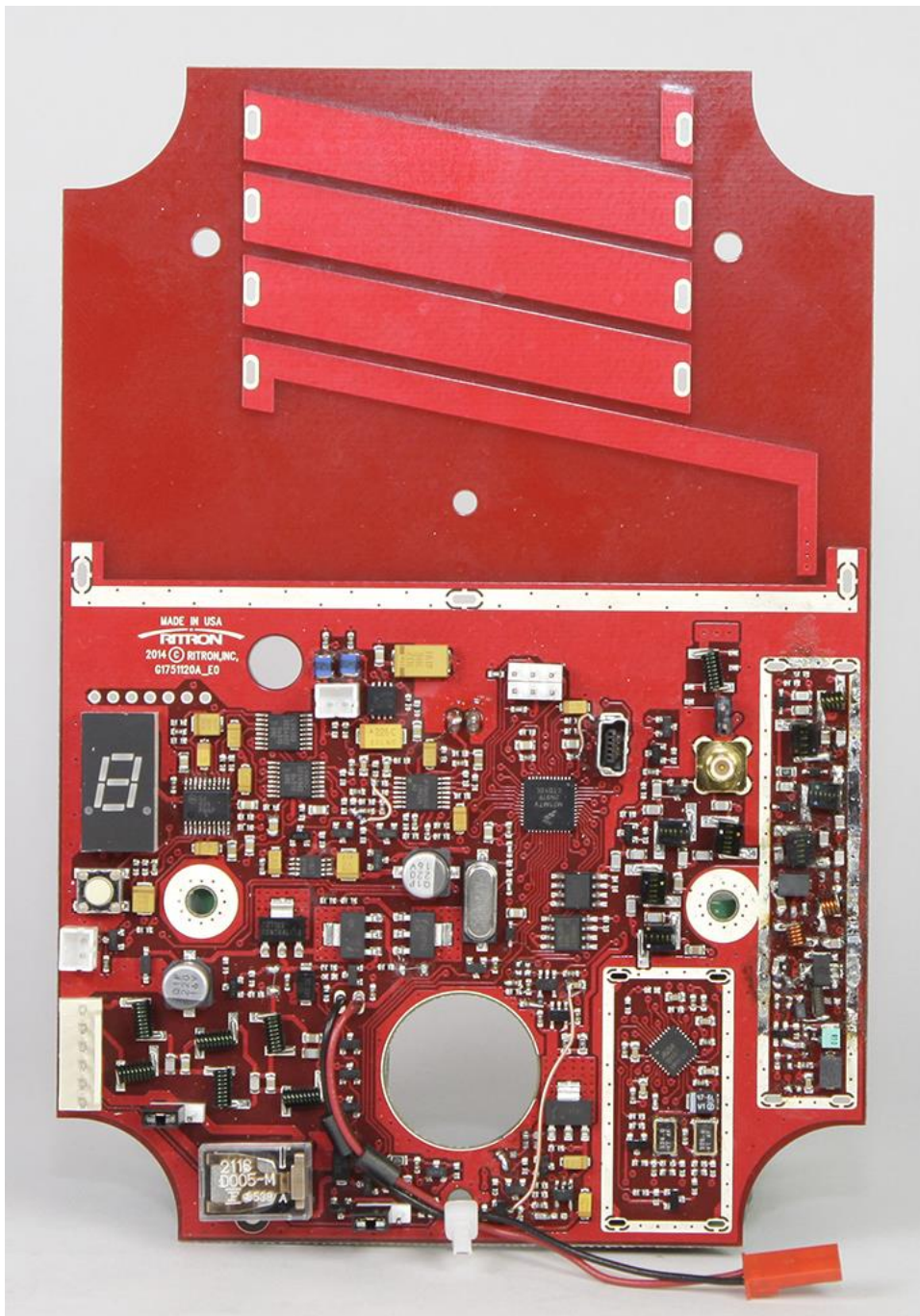


EXHIBIT: RQX-156M complete top side PCB assembly with shields and internal antenna removed
FCC ID: AIERIT38-156M

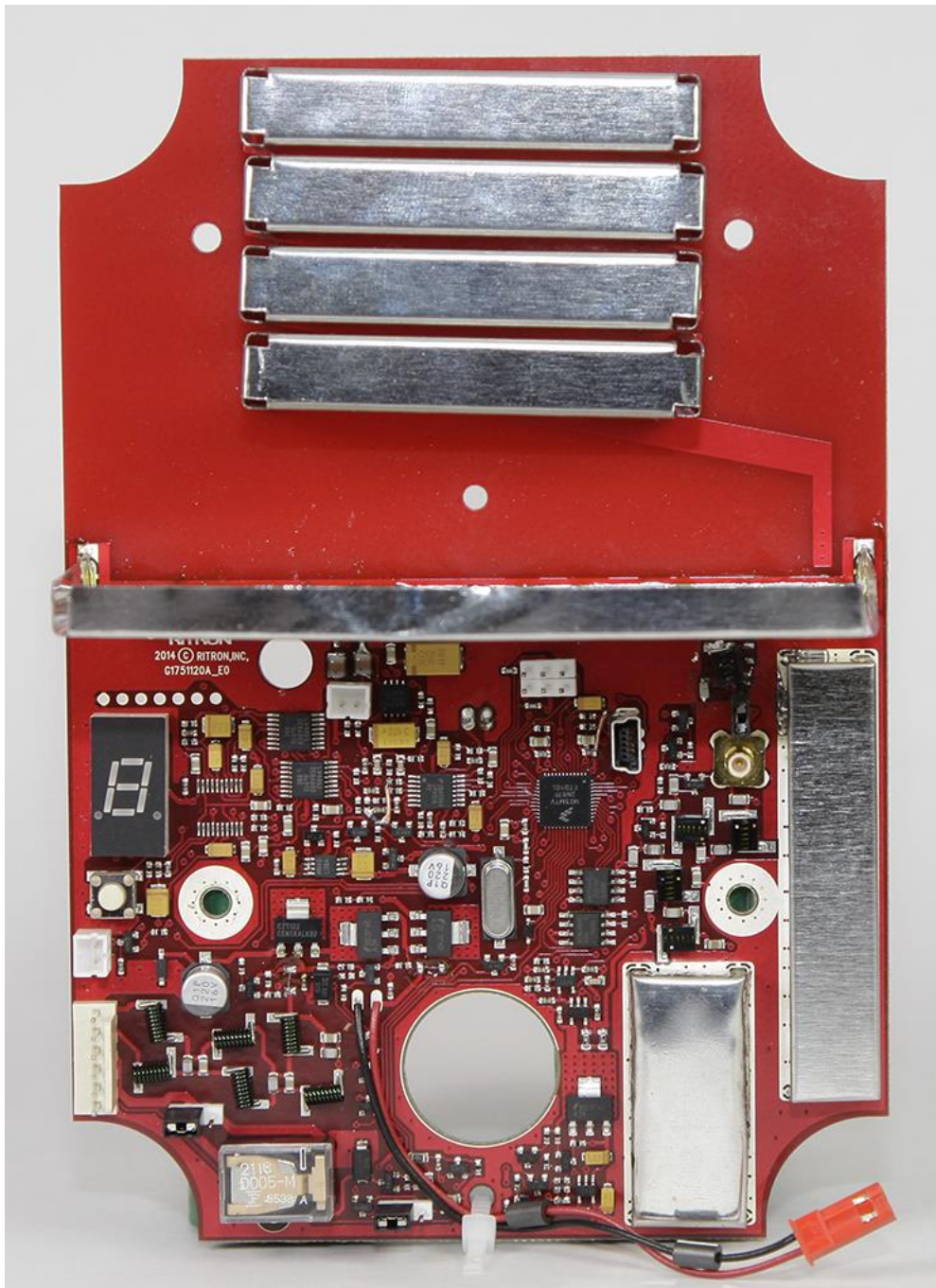


EXHIBIT: RQX-156M complete top side PCB assembly with shields and internal antenna installed
FCC ID: AIERIT38-156M



EXHIBIT: RQX-156M complete bottom side PCB assembly

FCC ID: AIERIT38-156M

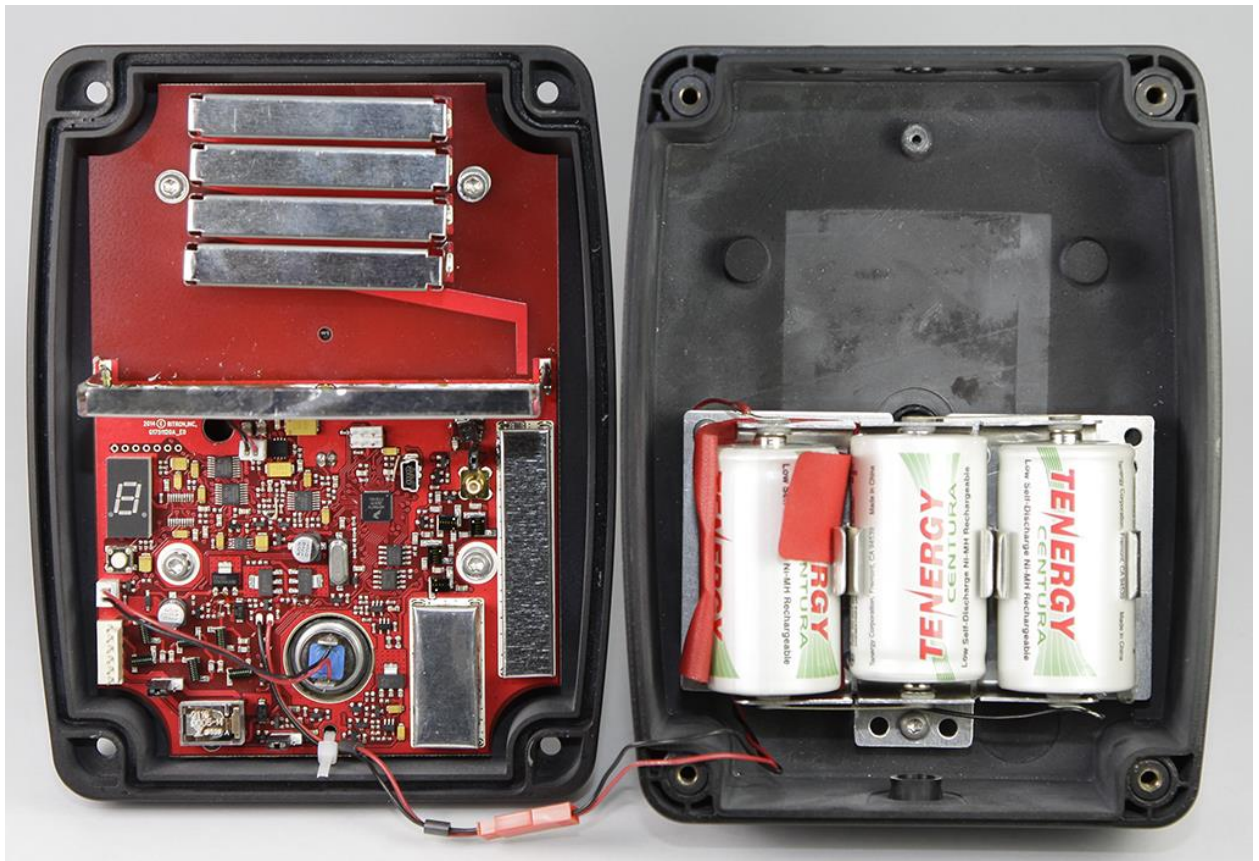


EXHIBIT: RQX-156M with 3 D-cell batteries. Case open to show printed circuit board installation
FCC ID: AIERIT38-156M

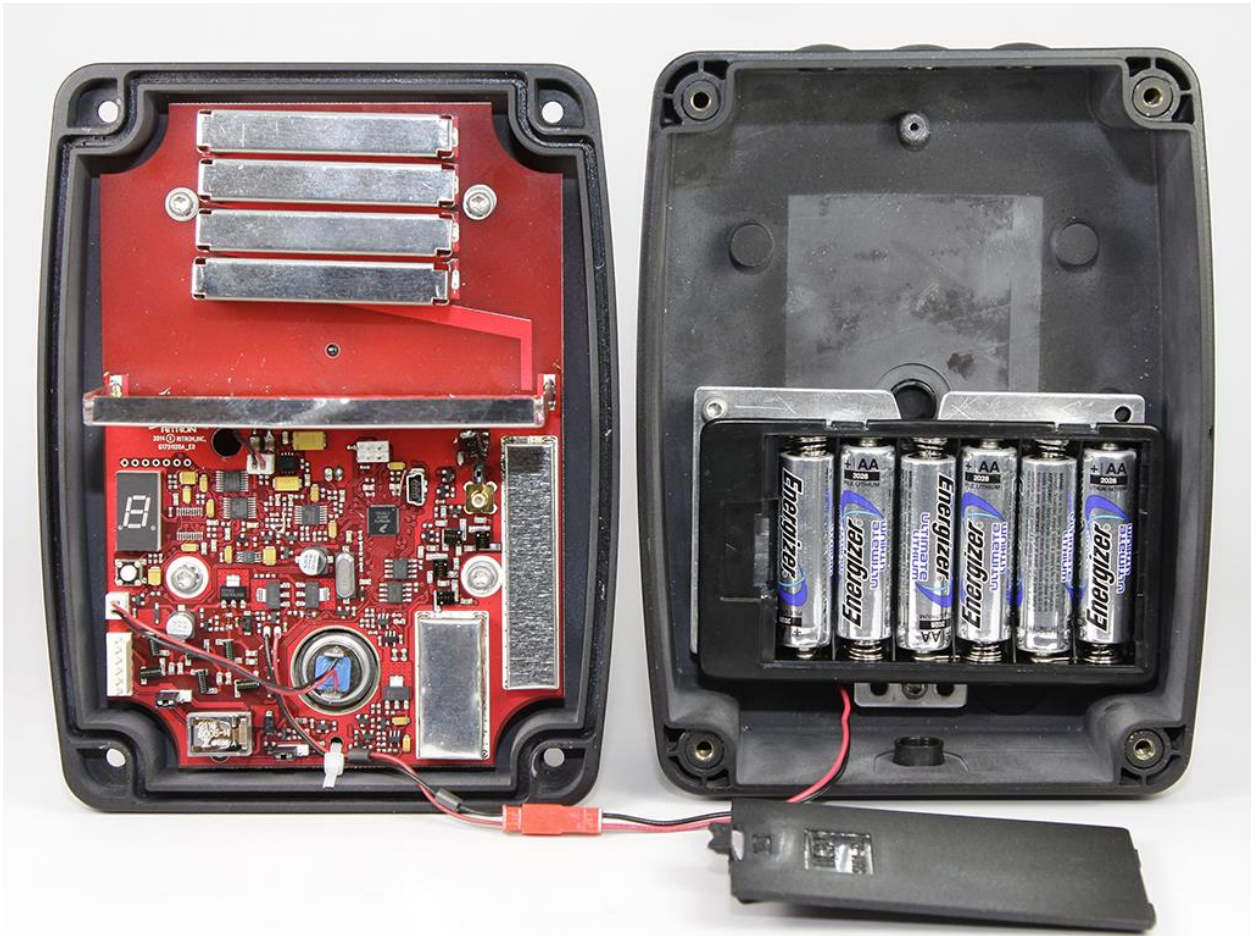


EXHIBIT: RQX-156M with 6 AA-cell batteries. Case open to show printed circuit board installation
FCC ID: AIERIT38-156M

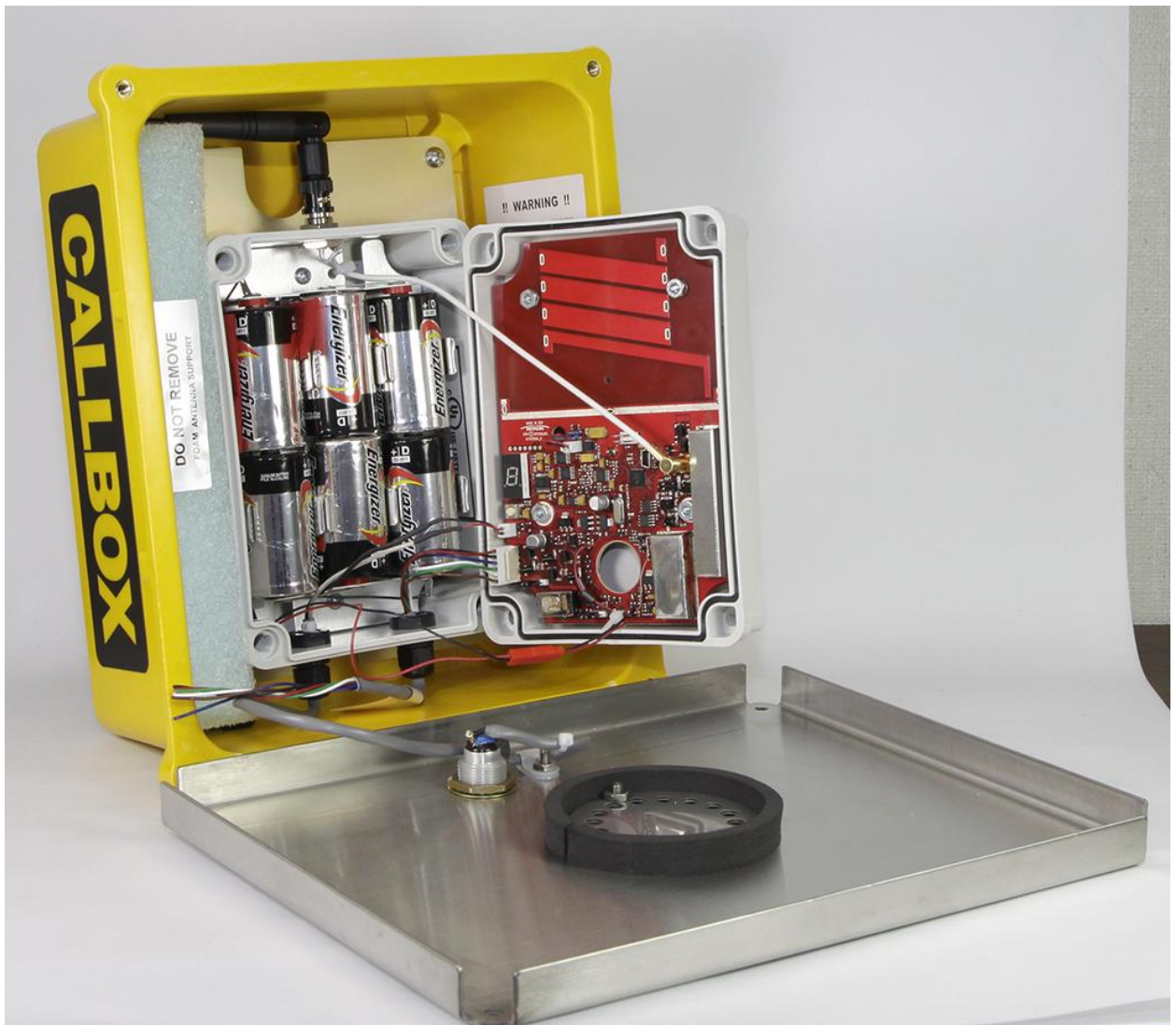


EXHIBIT: RQX-156M-XT with 6 D-cell batteries. Case open to show printed circuit board installation
FCC ID: AIERIT38-156M