

**TYPE OF EXHIBIT:** PHOTOGRAPHS-INTERNAL

**FCC PART:** 2.1033(c)(12)

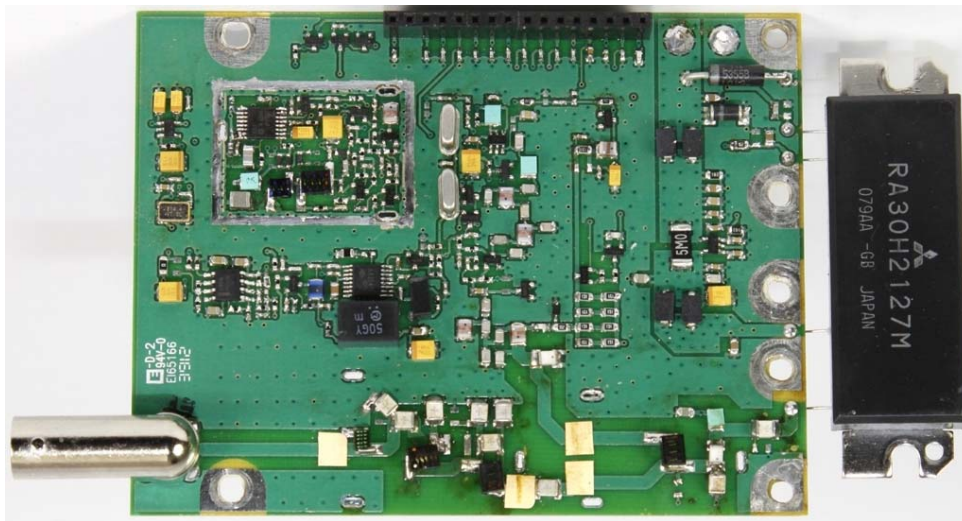
**MANUFACTURER:** RITRON, Inc.

**MODEL:** DTX-265

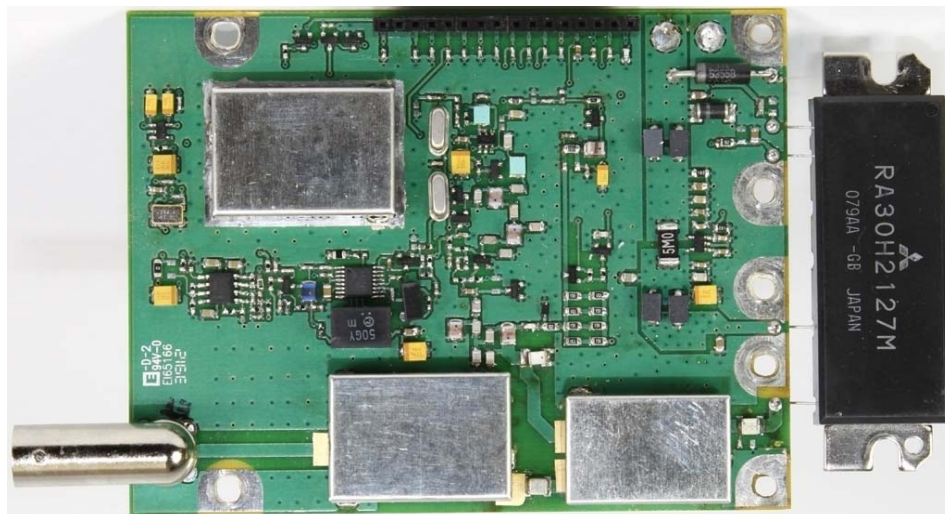
**TYPE OF UNIT:** VHF Transceiver Module

**FCC ID:** AIERIT34-2650

**DATE:** October 22, 2013



DTX-265 RF Board Top View w/o Shields



DTX-265 RF Board Top View w/ Shields

**TYPE OF EXHIBIT:** PHOTOGRAPHS-INTERNAL

**FCC PART:** 2.1033(c)(12)

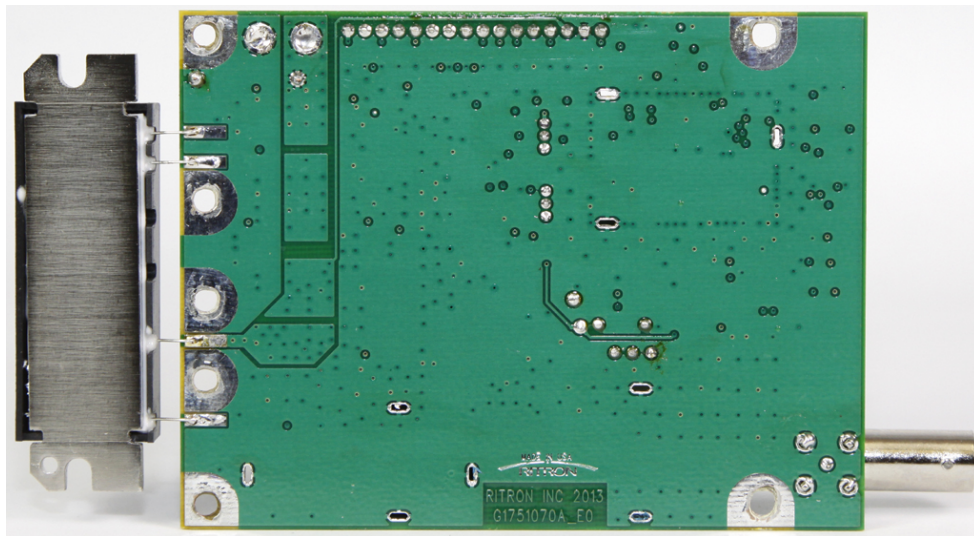
**MANUFACTURER:** RITRON, Inc.

**MODEL:** DTX-265

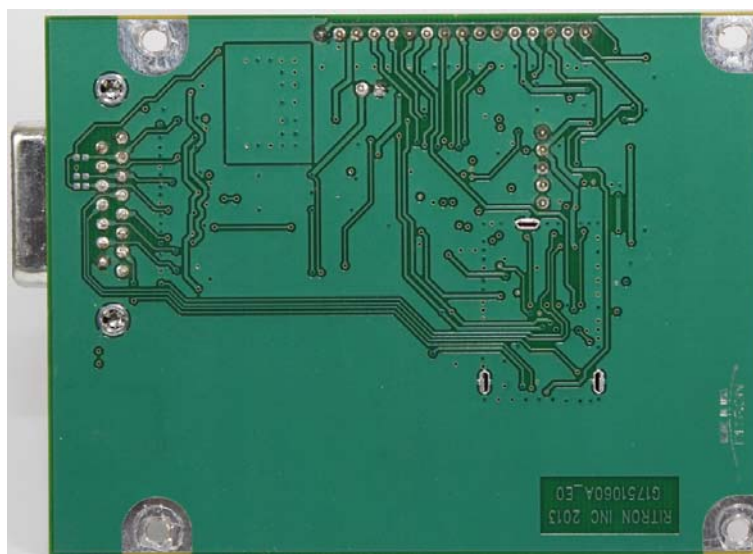
**TYPE OF UNIT:** VHF Transceiver Module

**FCC ID:** AIERIT34-2650

**DATE:** October 22, 2013



DTX-265 RF Board Bottom View



DTX-265 Control/Loader Board Bottom View

**TYPE OF EXHIBIT:** PHOTOGRAPHS-INTERNAL

**FCC PART:** 2.1033(c)(12)

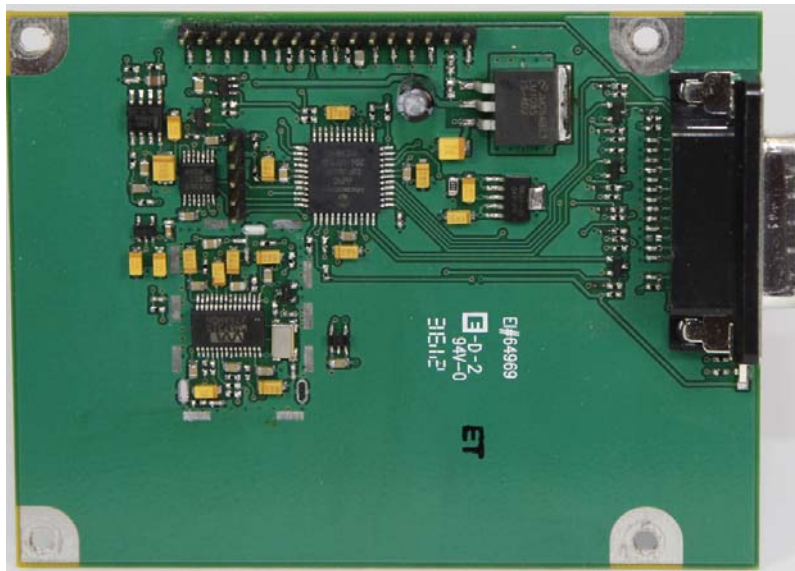
**MANUFACTURER:** RITRON, Inc.

**MODEL:** DTX-265

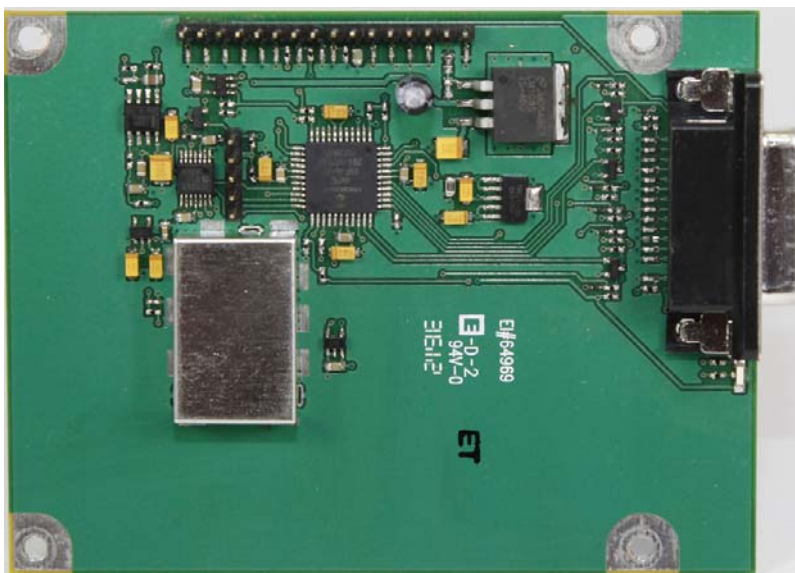
**TYPE OF UNIT:** VHF Transceiver Module

**FCC ID:** AIERIT34-2650

**DATE:** October 22, 2013



DTX-265 Control/Loader Board Top View w/o Shield



DTX-265 Control/Loader Board Top View w/ Shield



**TYPE OF EXHIBIT:** PHOTOGRAPHS-INTERNAL

**FCC PART:** 2.1033(c)(12)

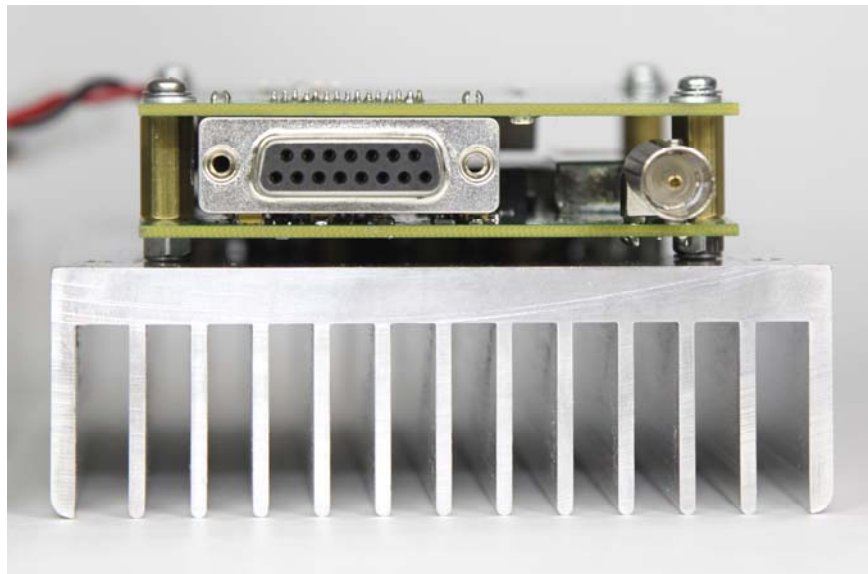
**MANUFACTURER:** RITRON, Inc.

**MODEL:** DTX-265

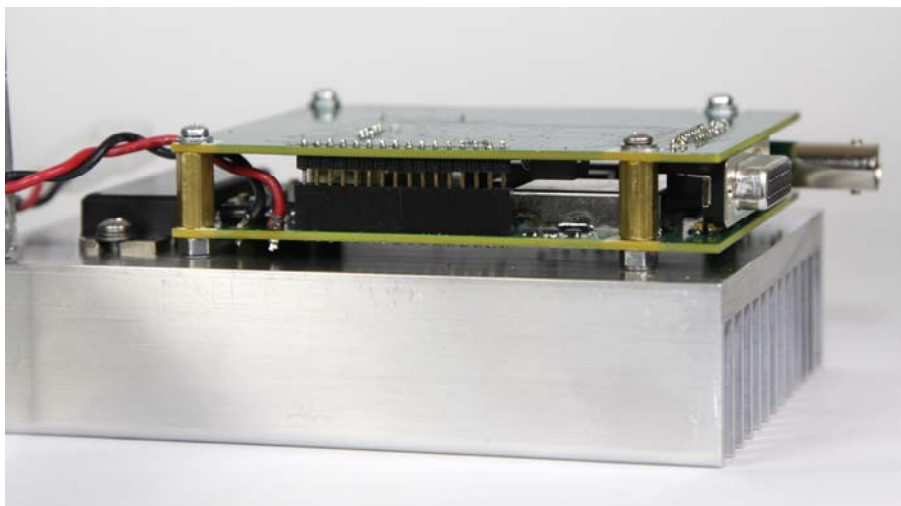
**TYPE OF UNIT:** VHF Transceiver Module

**FCC ID:** AIERIT34-2650

**DATE:** October 22, 2013



DTX-265 PCB Assembly Front View



DTX-265 PCB Assembly Side View

**TYPE OF EXHIBIT:** PHOTOGRAPHS-INTERNAL

**FCC PART:** 2.1033(c)(12)

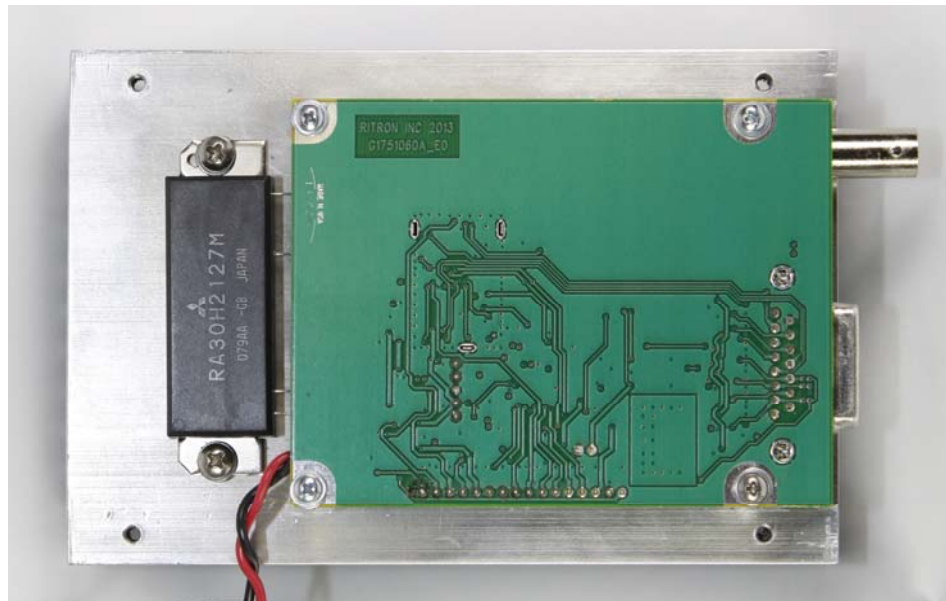
**MANUFACTURER:** RITRON, Inc.

**MODEL:** DTX-265

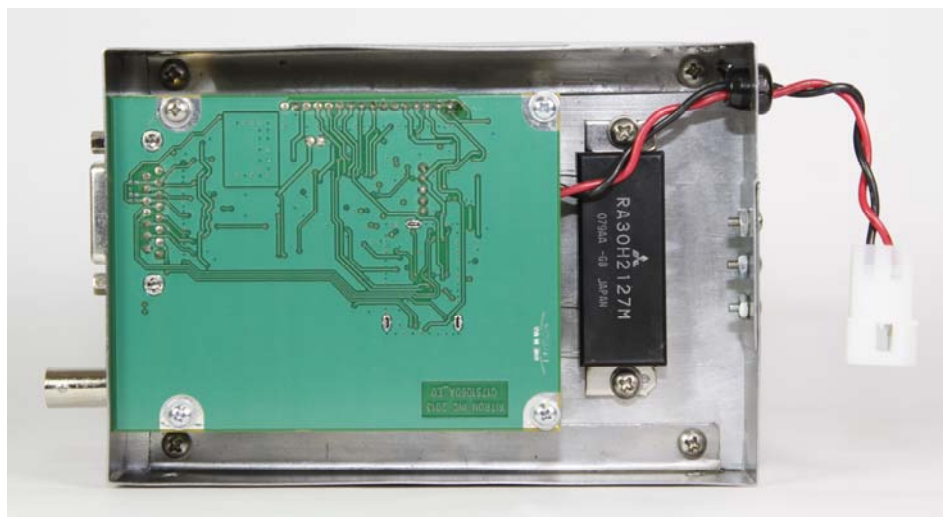
**TYPE OF UNIT:** VHF Transceiver Module

**FCC ID:** AIERIT34-2650

**DATE:** October 22, 2013



DTX-265 PCB Assembly Installed on Heatsink



DTX-265 PCB/Heatsink Assembly w/ Enclosure Shield