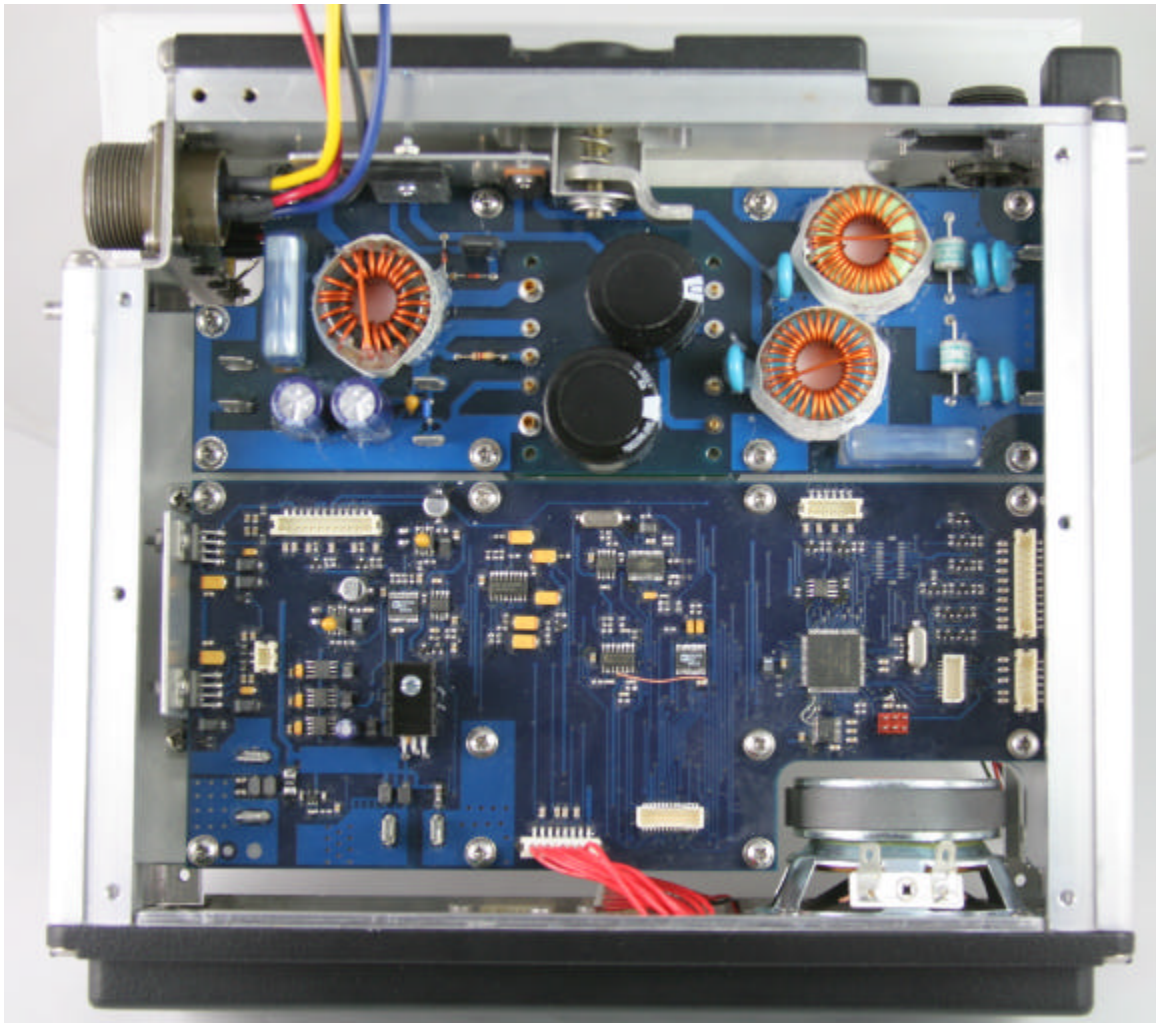
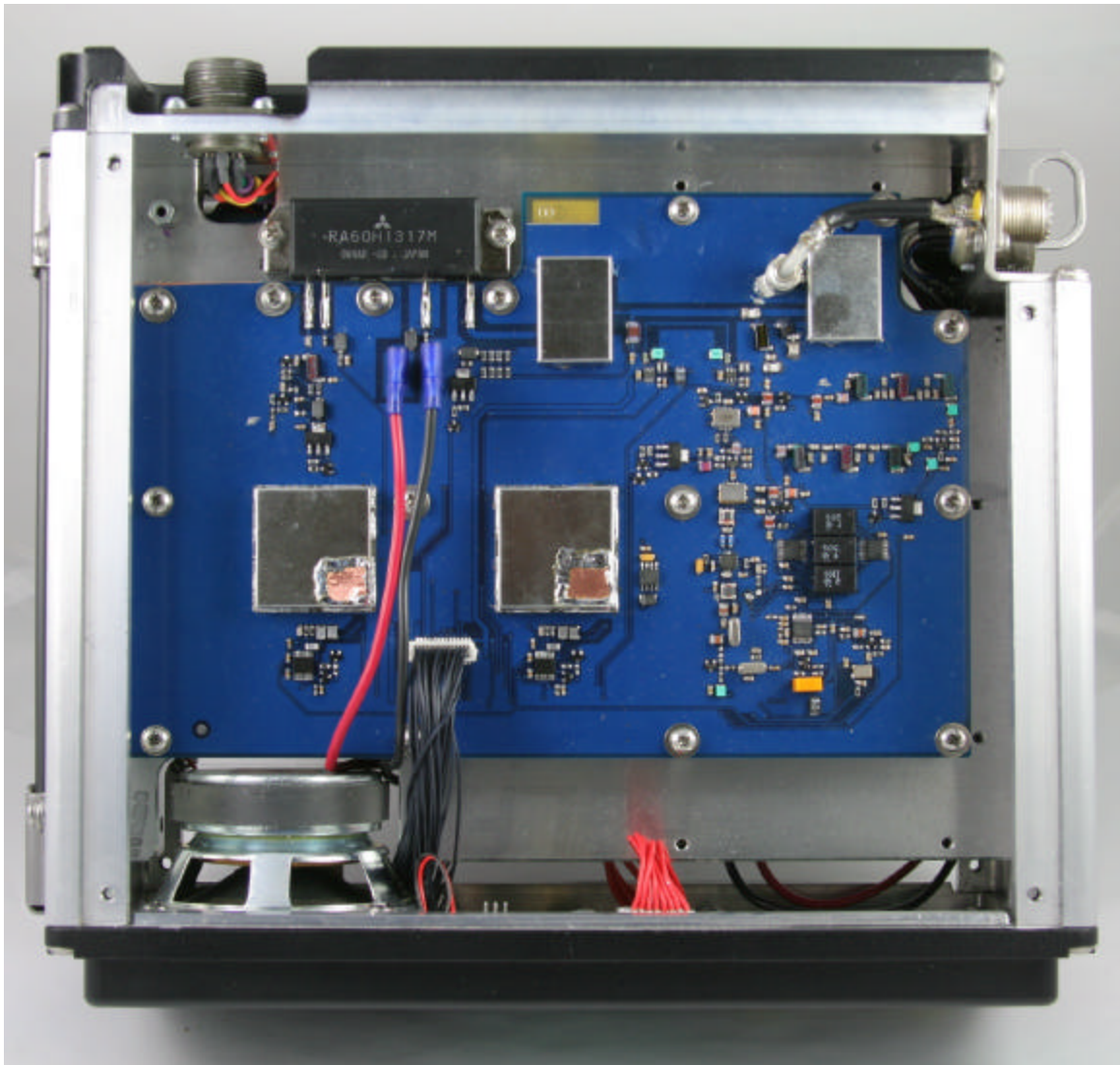


<b>TYPE OF EXHIBIT:</b>	PHOTOGRAPHS-INTERNAL
<b>FCC PART:</b>	2.1033(c)(12)
<b>MANUFACTURER:</b>	RITRON, Inc.
<b>MODEL:</b>	RCCR-151/152
<b>TYPE OF UNIT:</b>	VHF Locomotive Transceiver
<b>FCC ID:</b>	AIERIT28-150
<b>DATE:</b>	April 30, 2008

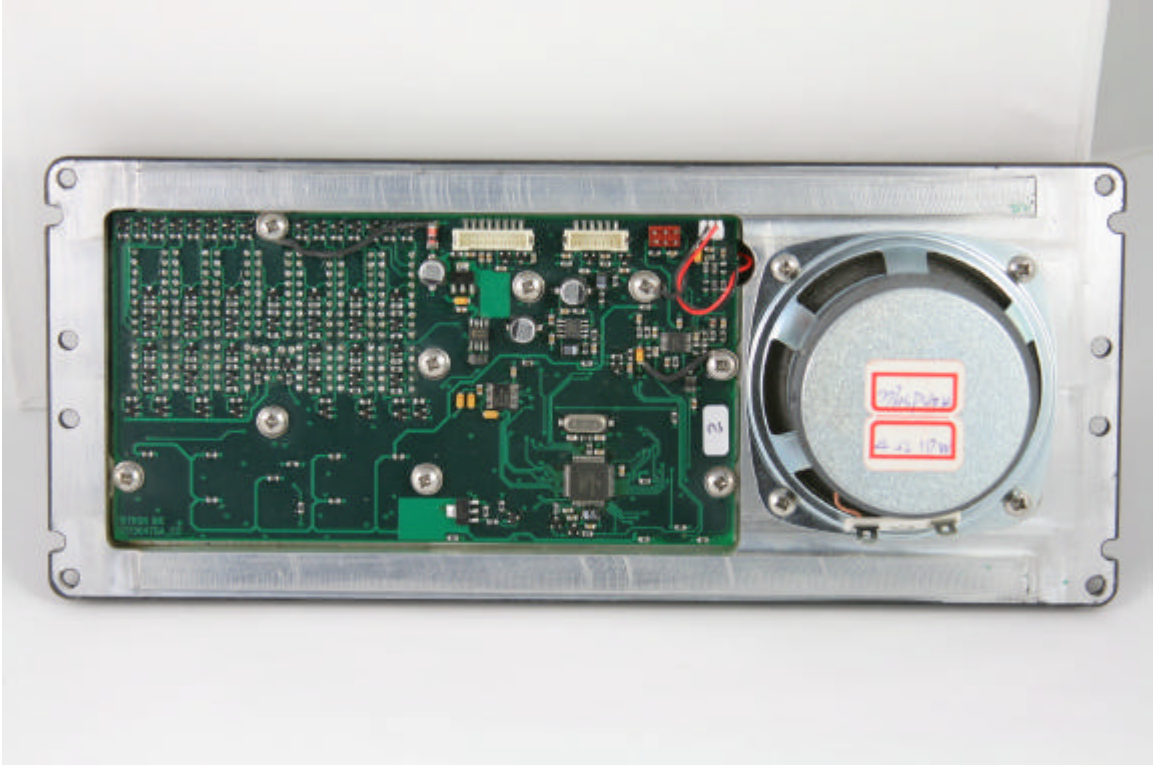
Internal views of the unit follow:



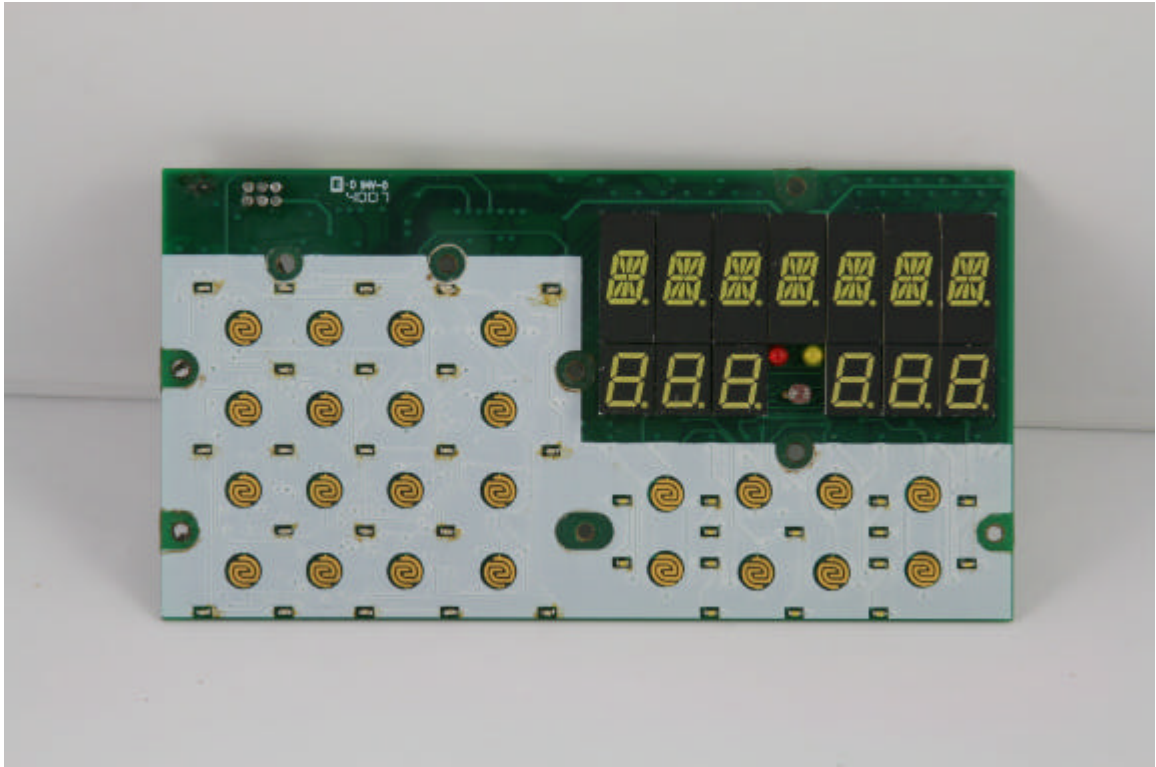
Bottom of unit showing the main board and the power supply board.



Top of unit showing the RF board.

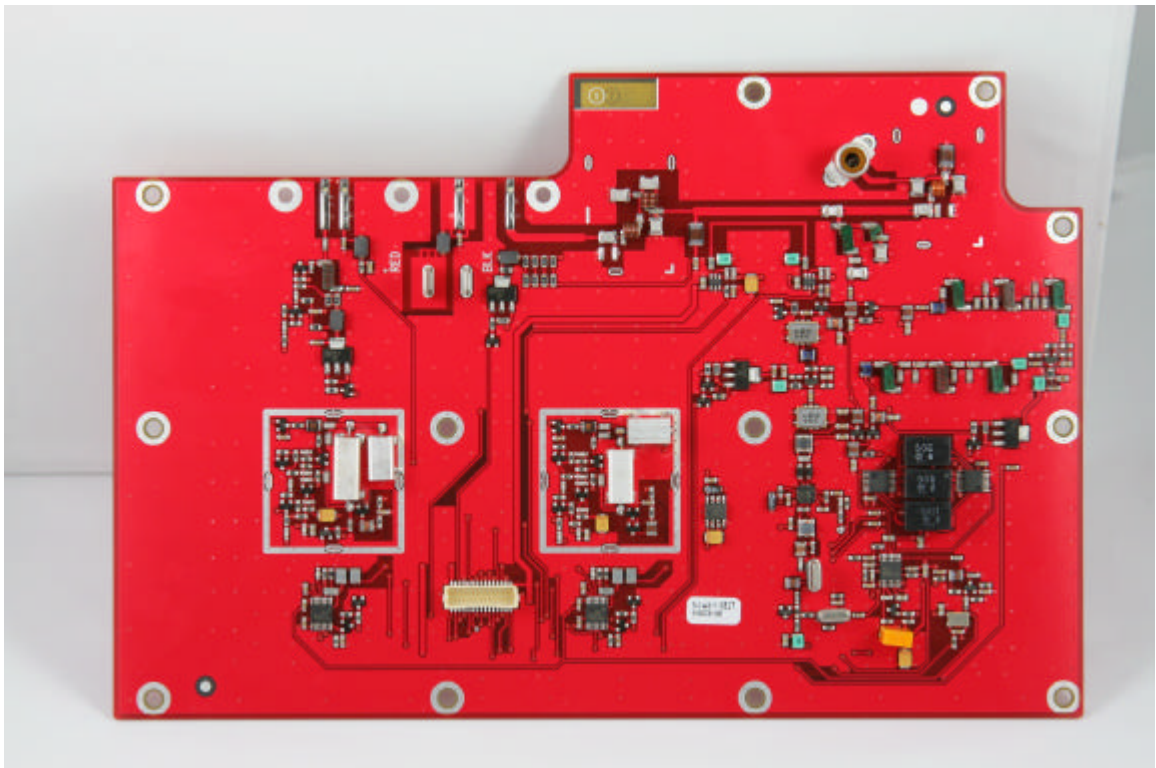


Rear of front panel showing the back of the display board and the speaker.



Front of display board.





RF board without shields or PA module.