

EXHIBIT: SPX-400 RF PCB installed in aluminum chassis

FCC ID: AIERIT19-450

IC: 1084A-RIT19450



EXHIBIT: SPX-400 Control PCB connected to front case

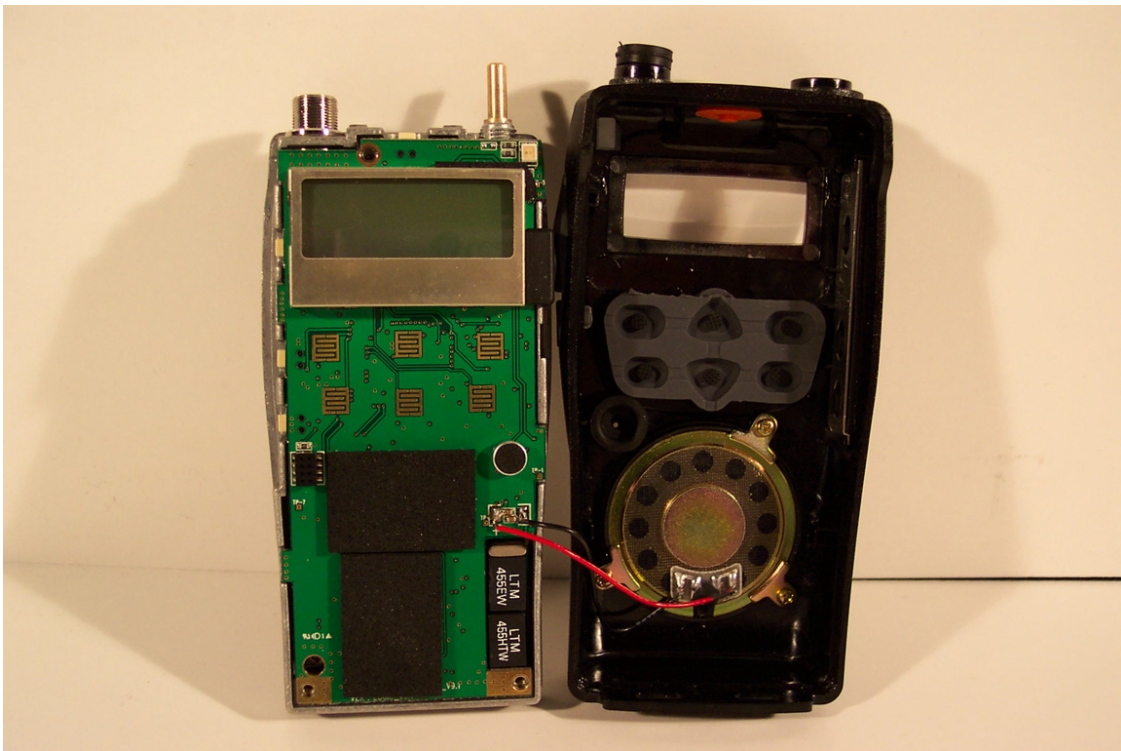


EXHIBIT: SPX-400 RF and Control PCB connected together

FCC ID: AIERIT19-450

IC: 1084A-RIT19450



EXHIBIT: SPX-400 RF and Control PCB assembly installed in front case, battery removed
FCC ID: AIERIT19-450
IC: 1084A-RIT19450