

EXHIBIT: SPX-200 RF PCB installed in aluminum chassis

FCC ID: AIERIT19-150

IC: 1084A-RIT19150



EXHIBIT: SPX-200 Control PCB connected to front case

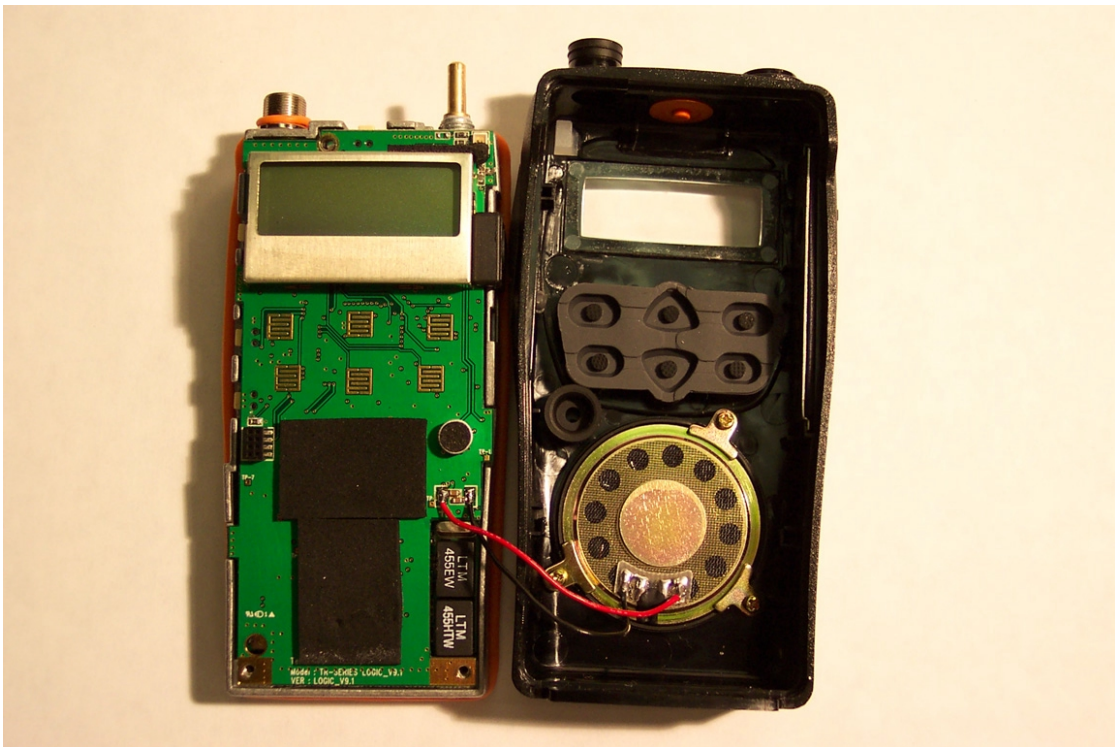


EXHIBIT: SPX-200 RF and Control PCB connected together

FCC ID: AIERIT19-150

IC: 1084A-RIT19150



EXHIBIT: SPX-200 RF and Control PCB assembly installed in front case, battery removed

FCC ID: AIERIT19-150

IC: 1084A-RIT19150