

**TYPE OF EXHIBIT:** INTERNAL PHOTOGRAPHS  
**FCC PART:** 2.1033 (c)(12)  
**MANUFACTURER:** RITRON, INC.  
505 West Carmel Drive  
Carmel, IN 46032  
**MODELS:** SPX-200  
**FCC ID:** AIERIT19-150  
**DATE:** December 20, 2004

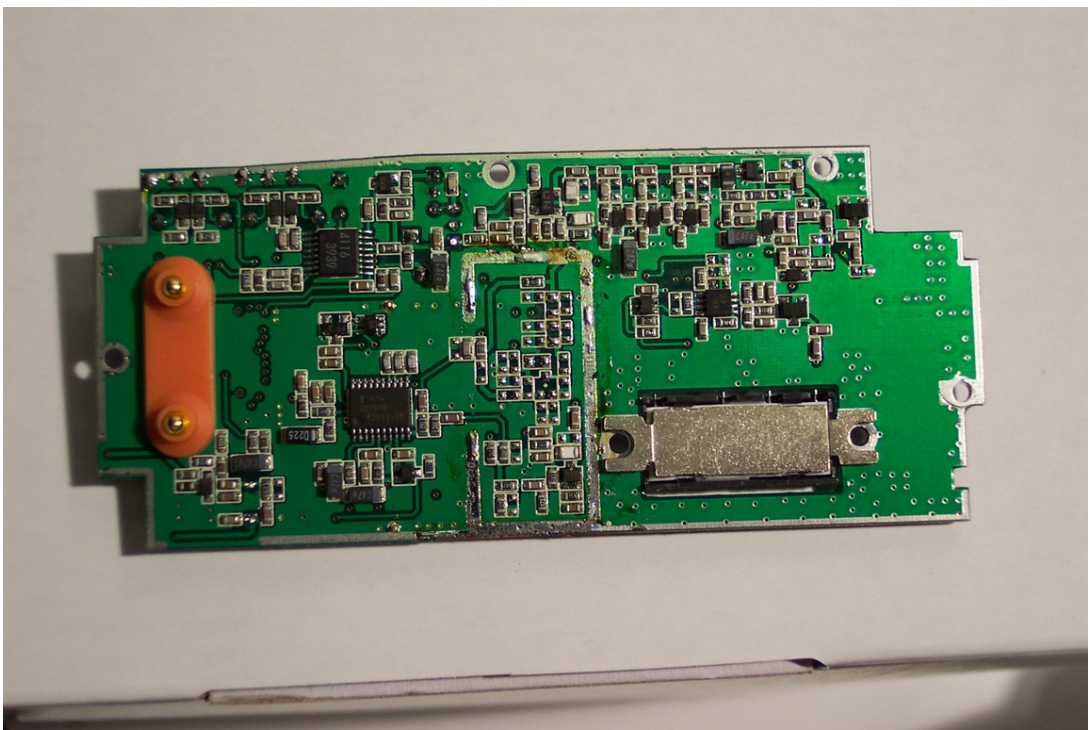
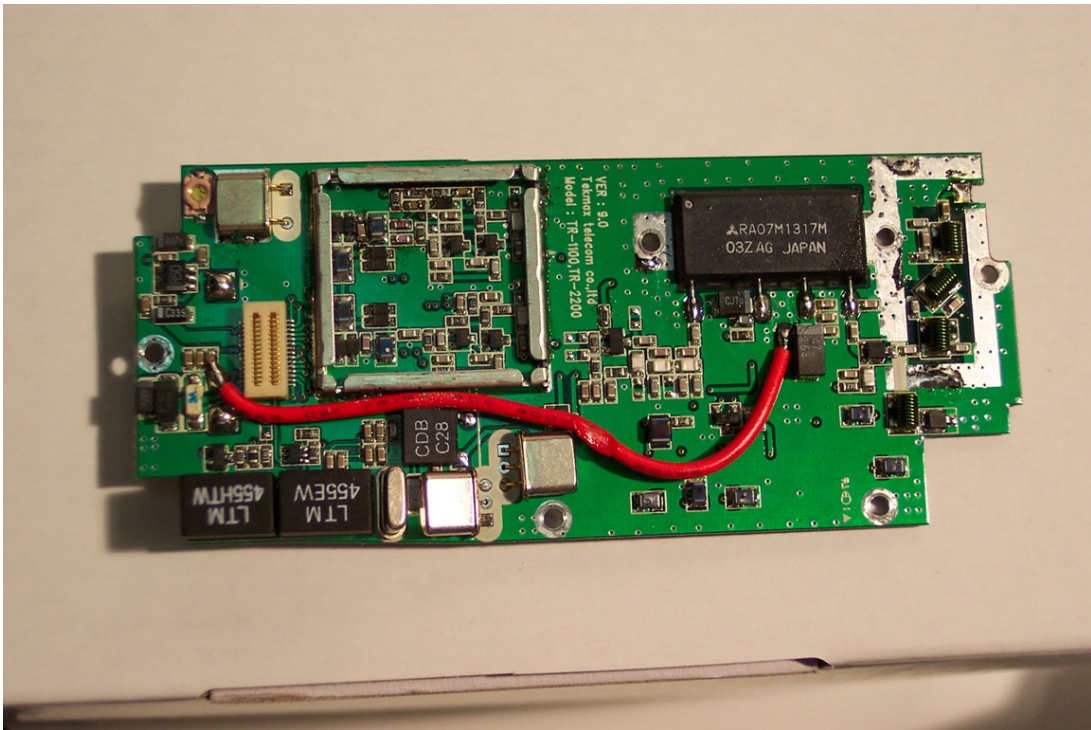
<b>IC STANDARDS:</b>	RSP-100, Issue 8, Section 5.1(e) RSP-100, Issue 8, Section 7.2(d)
<b>INDUSTRY CANADA:</b>	1084A-RIT19150
<b>MODELS:</b>	SPX-200-BC, SPX-200-CANADA

Included in this exhibit are photographs of the RITRON Model SPX-200 VHF-FM Portable Transceiver printed circuit board assembly and installation.

Additional photographs of the equipment of sufficient clarity to reveal equipment construction and layout, labels for controls and meters, and chassis assembly are included with this Certification request as separate exhibits.

Signed:

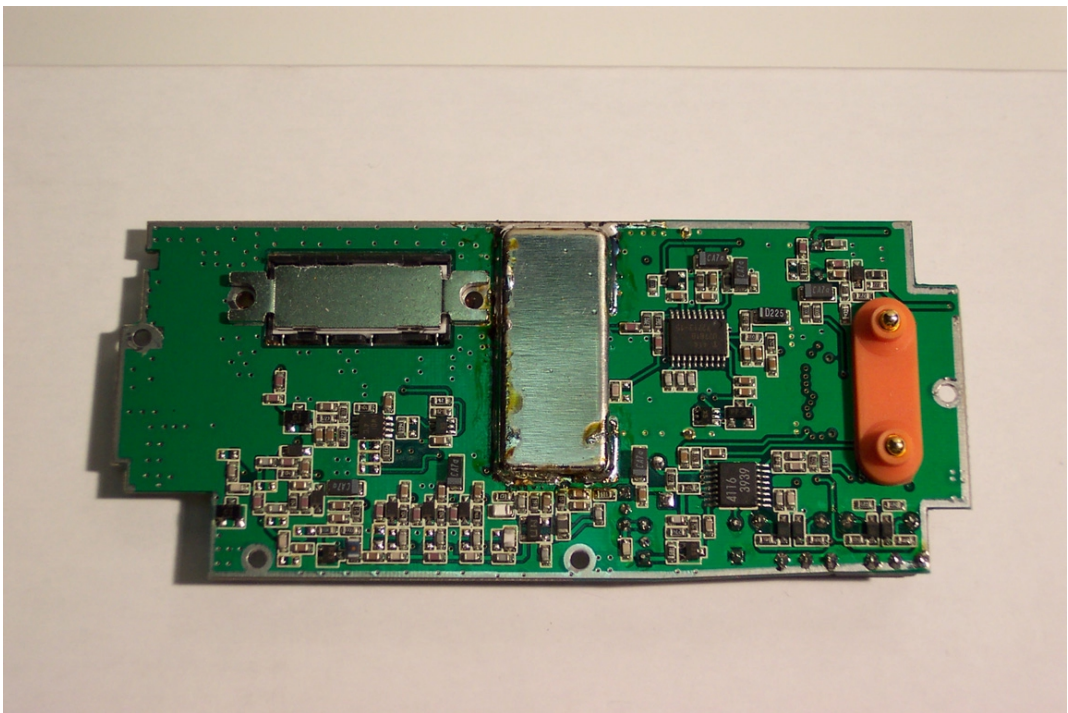
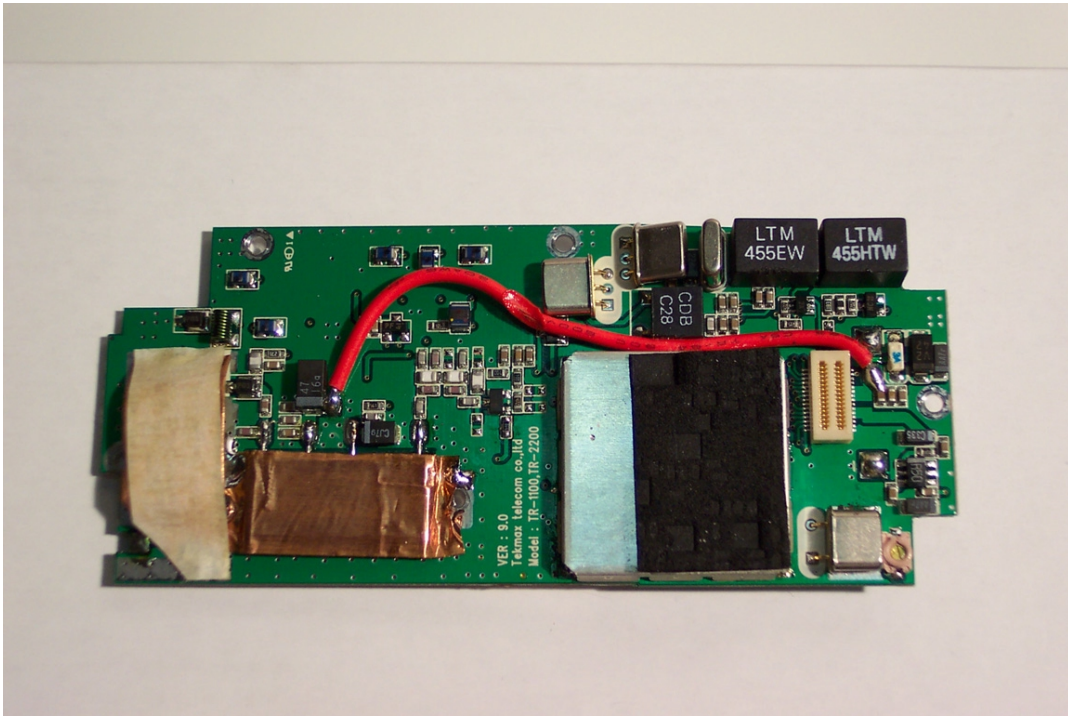
  
Kevin G. Matson - Project Engineer



**EXHIBIT:** SPX-200 complete topside/bottomside RF PCB with shields removed

**FCC ID:** AIERIT19-150

**IC:** 1084A-RIT19150

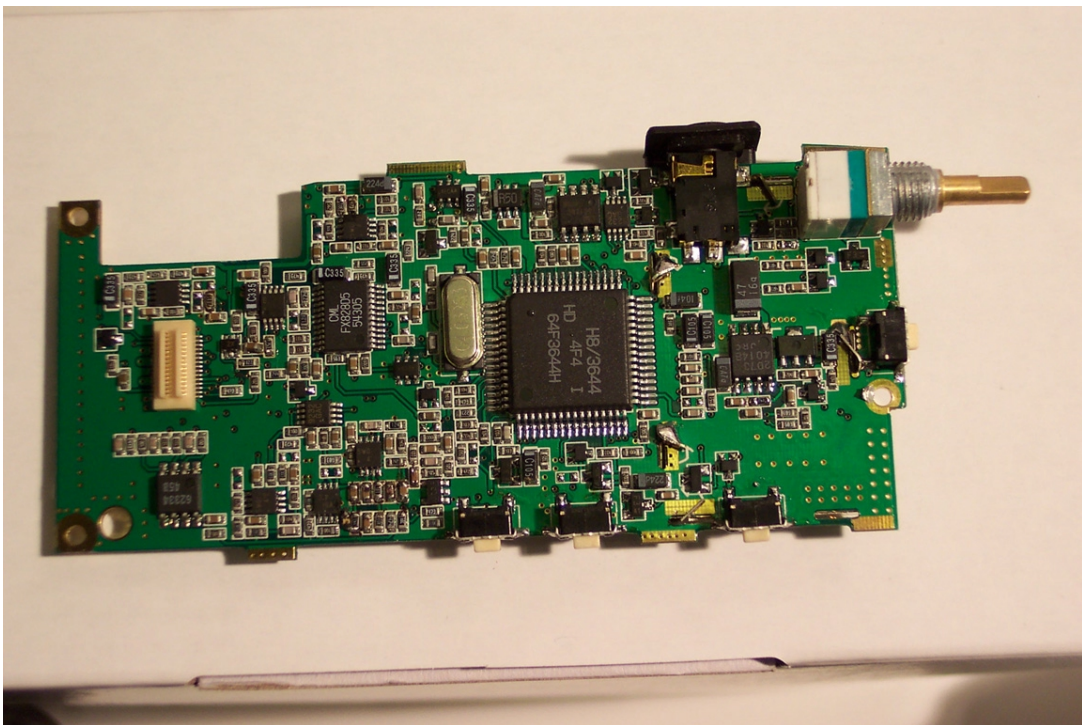
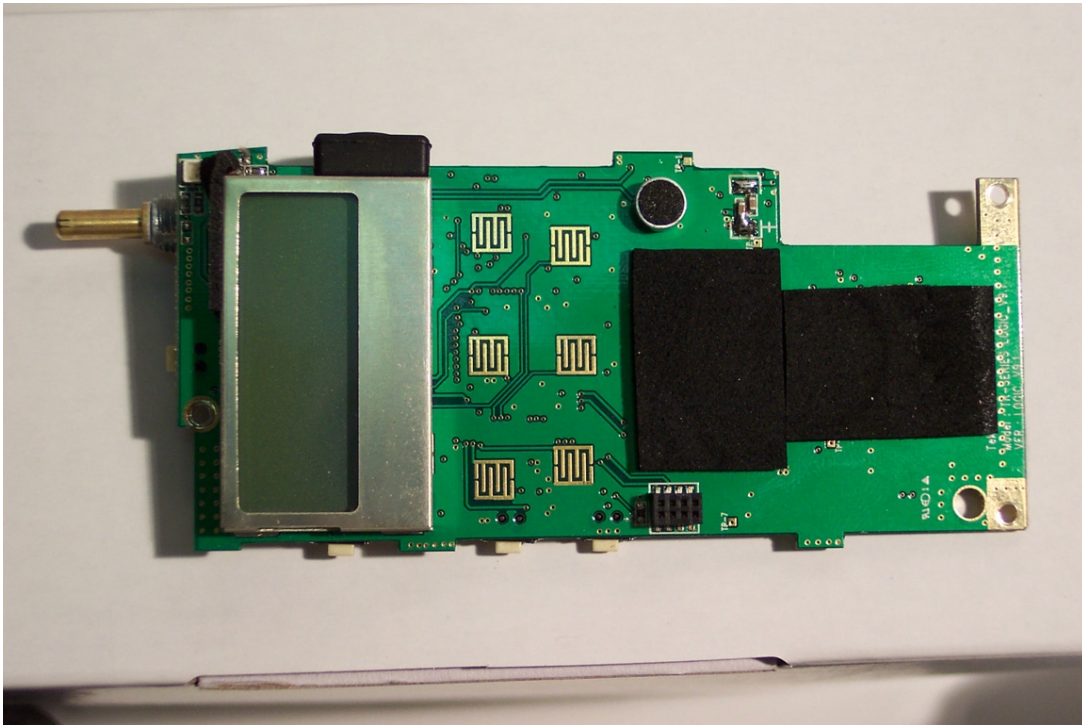


**EXHIBIT:** SPX-200 complete topside/bottomside RF PCB with shields installed

**FCC ID:** AIERIT19-150

**IC:** 1084A-RIT19150





**EXHIBIT:** SPX-200 complete bottomside/topside Control PCB

**FCC ID:** AIERIT19-150

**IC:** 1084A-RIT19150