

**TYPE OF EXHIBIT:** SCHEMATIC AND COMPONENT PLACEMENT DRAWINGS

**FCC PART:** 2.1033 (c)(10,12)

**MANUFACTURER:** RITRON, INC.  
505 West Carmel Drive  
Carmel, IN 46032

**MODELS:** RQX-156, RQX-156-XT

**FCC ID:** AIERIT18-156

**DATE:** February 4, 2003

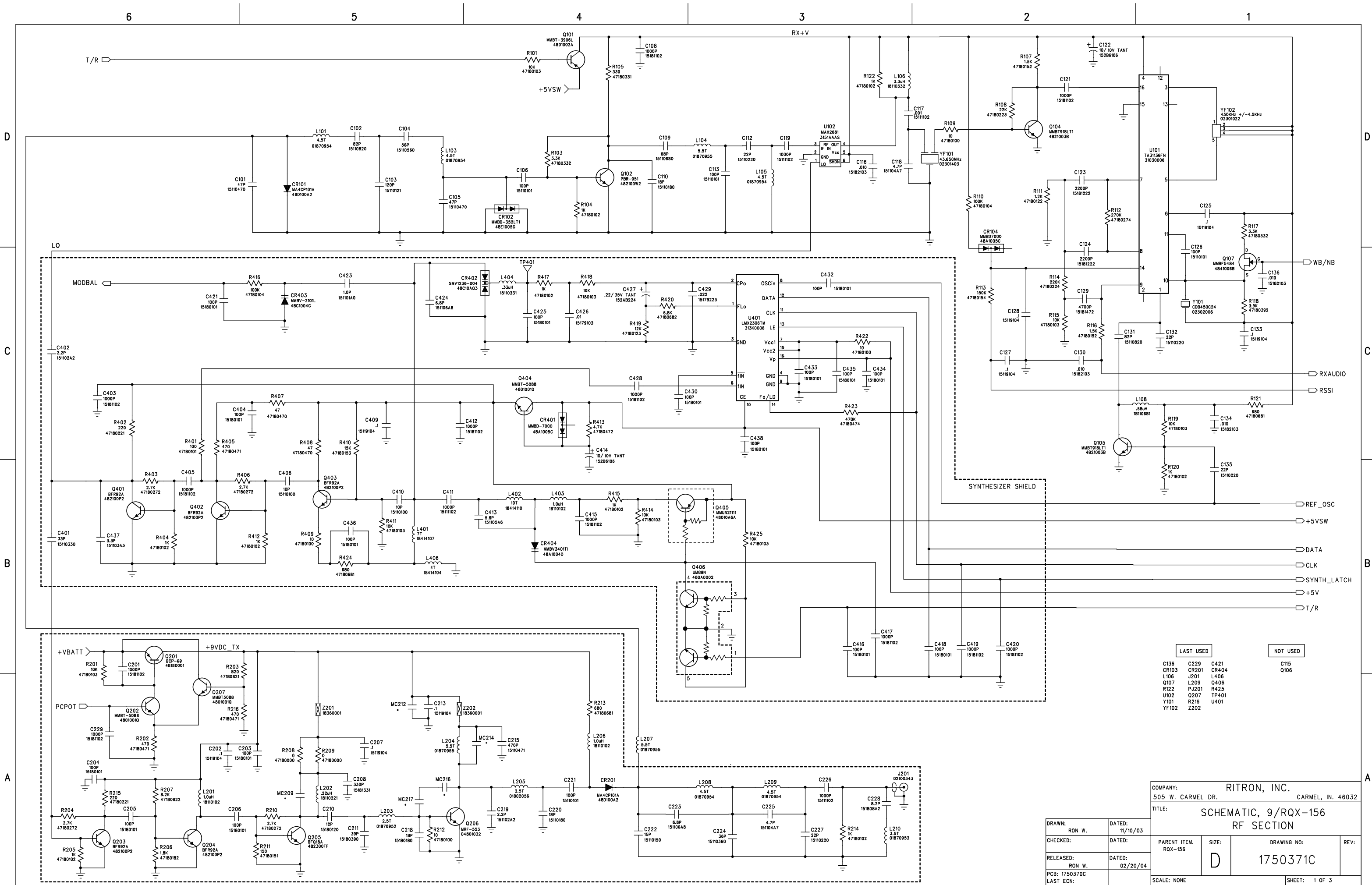
<b>IC STANDARDS:</b>	RSP-100, Issue 8, Section 5.1(f) RSP-100, Issue 8, Section 7.2(b)
<b>INDUSTRY CANADA:</b>	1084A-RIT18156
<b>MODELS:</b>	RQX-156-CANADA, RQX-156-XT-CANADA, RQX-156-BC, RQX-156-BC-XT

Included in this exhibit are schematic and component placement drawings for the RITRON Model RQX-156 VHF-FM Callbox Transceiver per FCC Parts 2.1033(c)(10) and 2.1033(c)(12).

Descriptions of all circuitry and devices provided for determining and stabilizing frequency, for suppression of spurious radiation, for limiting modulation, and for limiting power are provided in the Maintenance Manual, which is included with this Certification request as a separate exhibit.

Additional photographs of the equipment of sufficient clarity to reveal equipment construction and layout, labels for controls and meters, and sufficient views of the internal construction to define component placement and chassis assembly are included with this Certification request as a separate exhibit.

Signed:   
Kevin G. Matson - Project Engineer



6

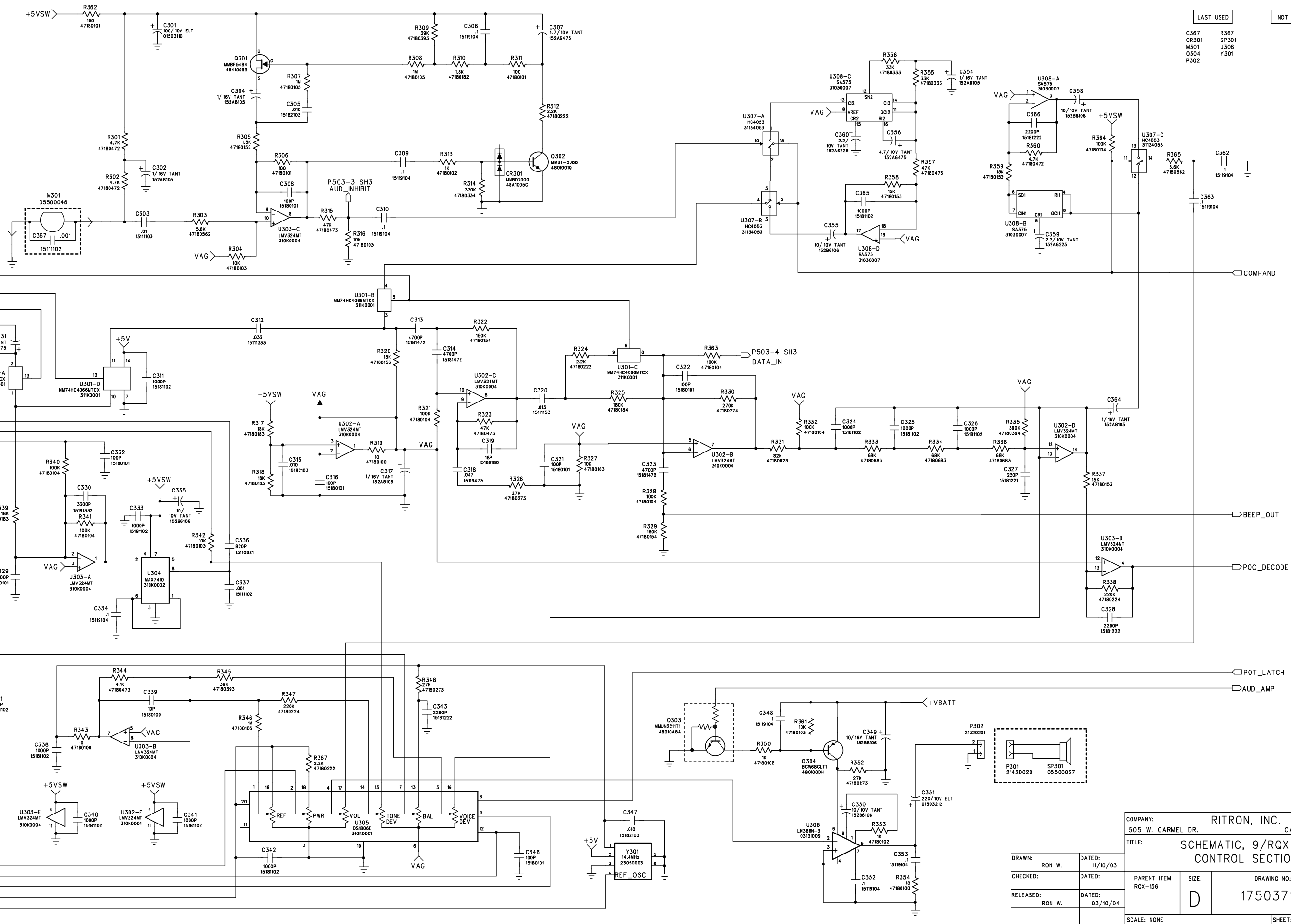
5

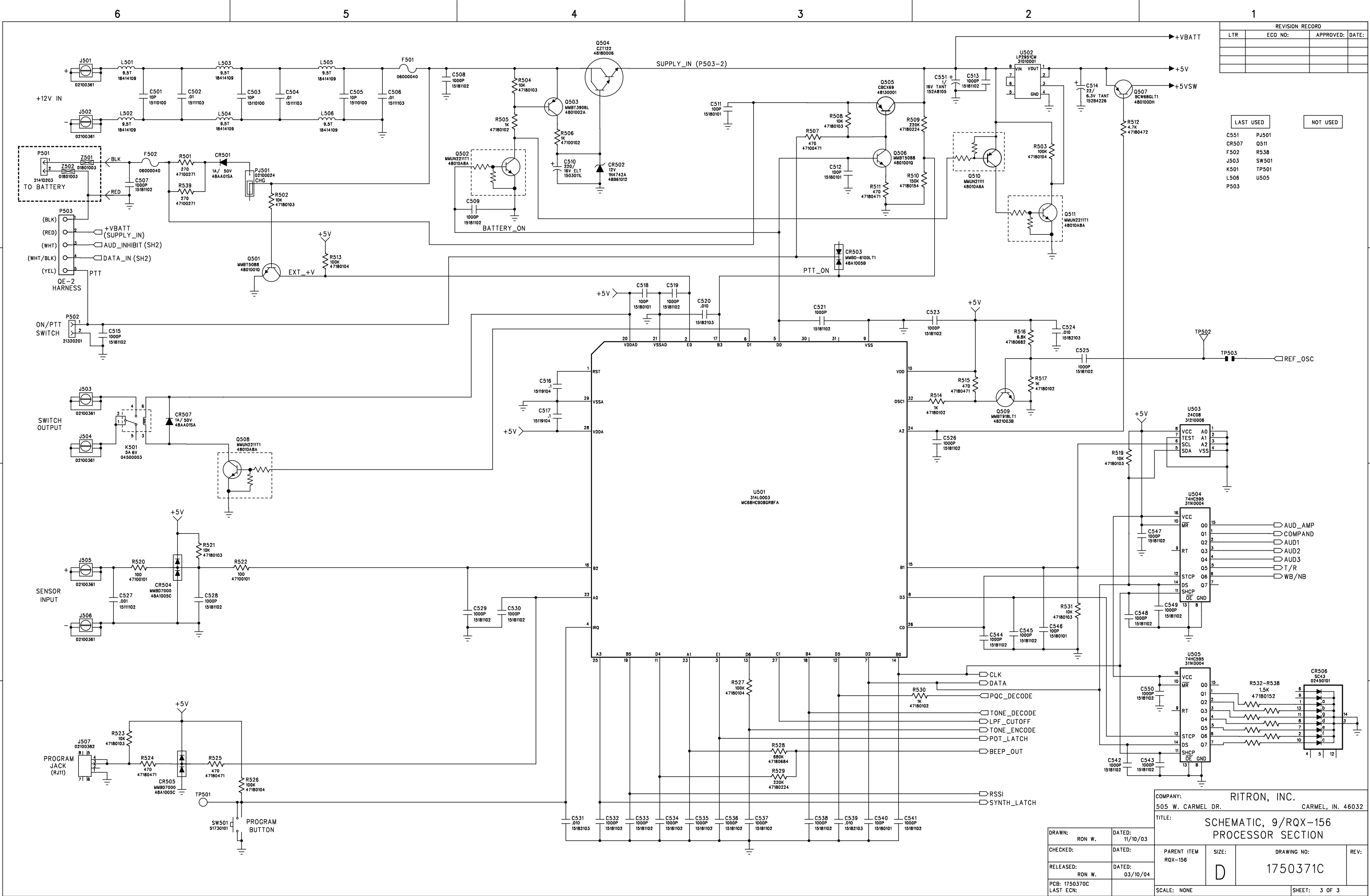
4

3

2

1





REVISION RECORD			
LTR	ECO NO:	APPROVED:	DATE:

LAST USED		NOT USED	
C551	PJ501	Q511	
CR507	Q511	R538	
F502	R538	SW501	
J503	SW501	TP501	
K501	TP501	U505	
L506	U505		
P503			

COMPANY: RITRON, INC.  
505 W. CARMEL DR. CARMEL, IN. 46032

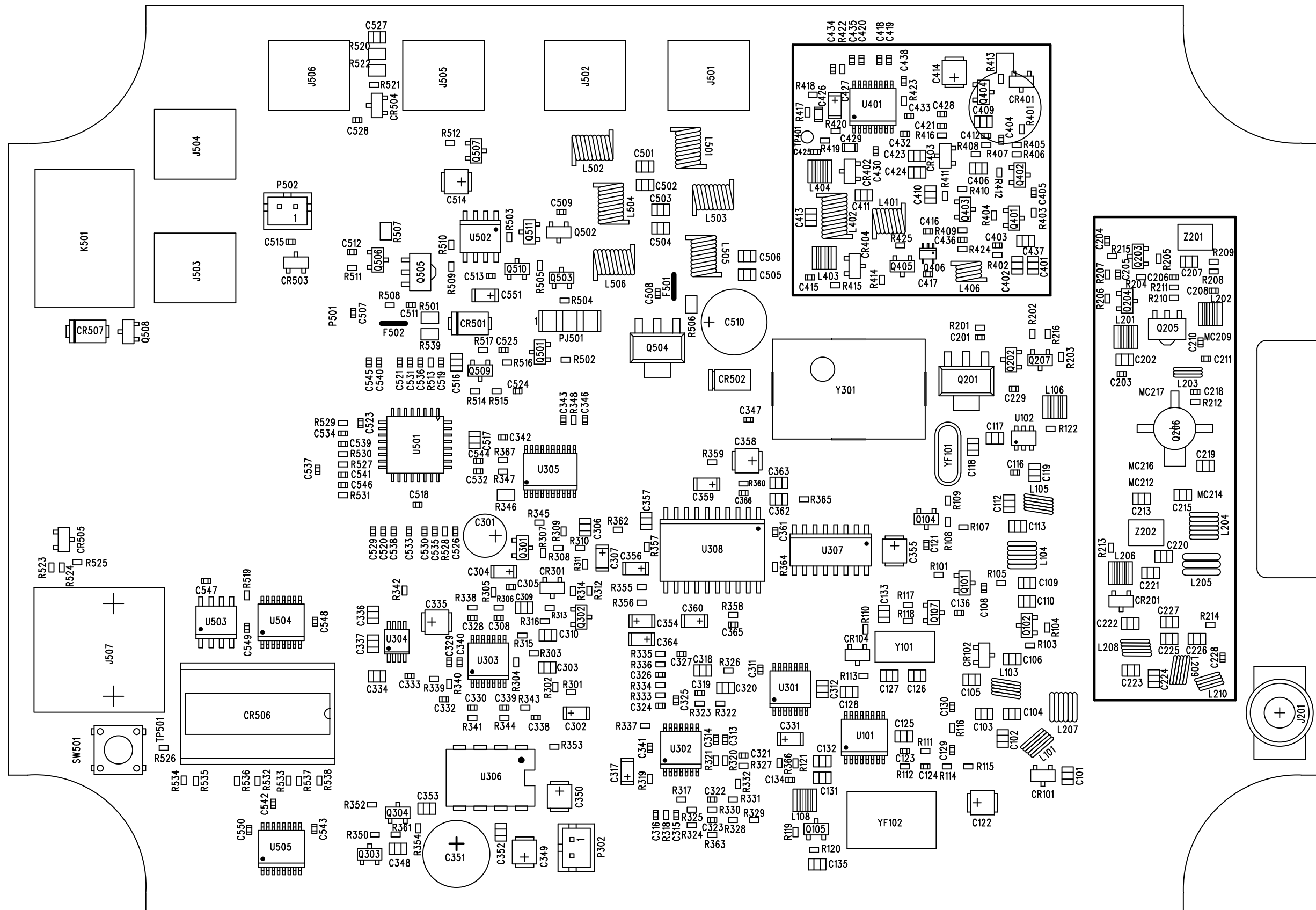
TITLE: SCHEMATIC, 9/RQX-156  
PROCESSOR SECTION

DRAWN: RON W.	DATED: 11/10/03
CHECKED:	DATED:
RELEASED: RON W.	DATED: 03/10/04
PCB: 1750370C LAST ECN:	

PARENT ITEM	SIZE:	DRAWING NO:	REV:
RQX-156	D	1750371C	
SCALE: NONE		SHEET: 3 OF 3	

**12/30/03 LAST ECN:**

**12/30/03 LAST ECN:**



PARENT ITEM: RQX-156  
1750370C