

**TYPE OF EXHIBIT:** SCHEMATIC AND COMPONENT PLACEMENT DRAWINGS

**FCC PART:** 2.1033 (c)(10,12)

**MANUFACTURER:** RITRON, INC.  
505 West Carmel Drive  
Carmel, IN 46032

**MODEL:** PBS-446D

**TYPE OF UNIT:** UHF-FM Base Transceiver

**FCC ID:** AIERIT16-446

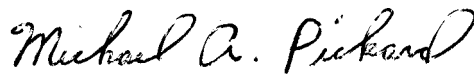
**DATE:** December 4, 2002

Included in this exhibit are schematic and component placement drawings for the RITRON Model PBS-446D UHF-FM Base Transceiver per FCC Parts 2.1033(c)(10) and 2.1033(c)(12).

Descriptions of all circuitry and devices provided for determining and stabilizing frequency, for suppression of spurious radiation, for limiting modulation, and for limiting power are provided in the Maintenance Manual, which is included with this Certification request as a separate exhibit.

Additional photographs of the equipment of sufficient clarity to reveal equipment construction and layout, labels for controls and meters, and sufficient views of the internal construction to define component placement and chassis assembly are included with this Certification request as a separate exhibit.

Signed:



Michael A. Pickard - Project Engineer

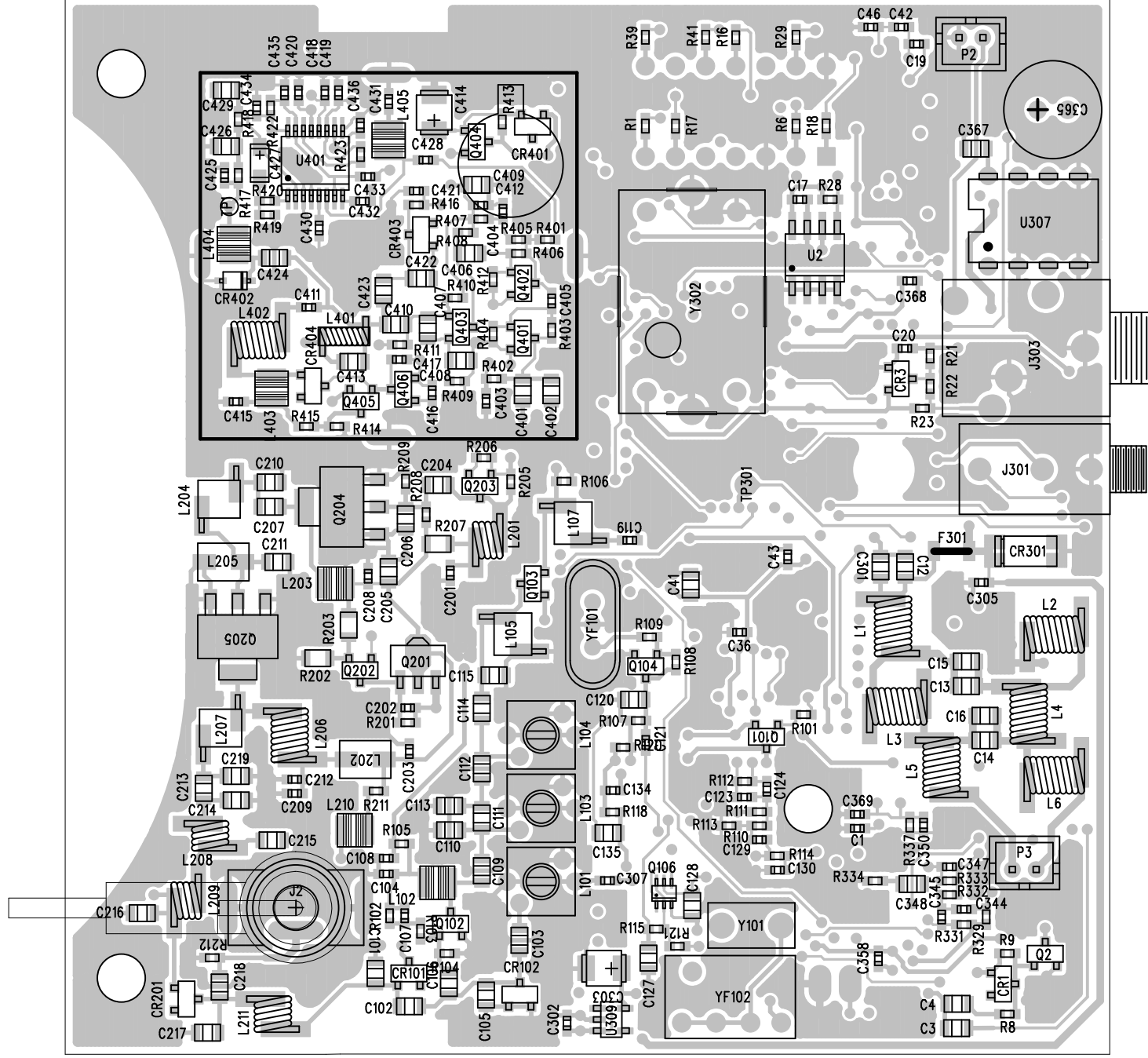






# BOTTOM (SECONDARY) SIDE CIRCUIT-LAYER 4

1750330A



# TOP (PRIMARY) SIDE CIRCUIT-LAYER 1

1750330A

