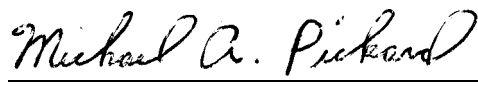


**TYPE OF EXHIBIT:** INTERNAL PHOTOGRAPHS  
**FCC PART:** 2.1033 (c)(12)  
**MANUFACTURER:** RITRON, INC.  
505 West Carmel Drive  
Carmel, IN 46032  
**MODEL:** PBS-446D  
**TYPE OF UNIT:** UHF-FM Base Transceiver  
**FCC ID:** AIERIT16-446  
**DATE:** December 4, 2002

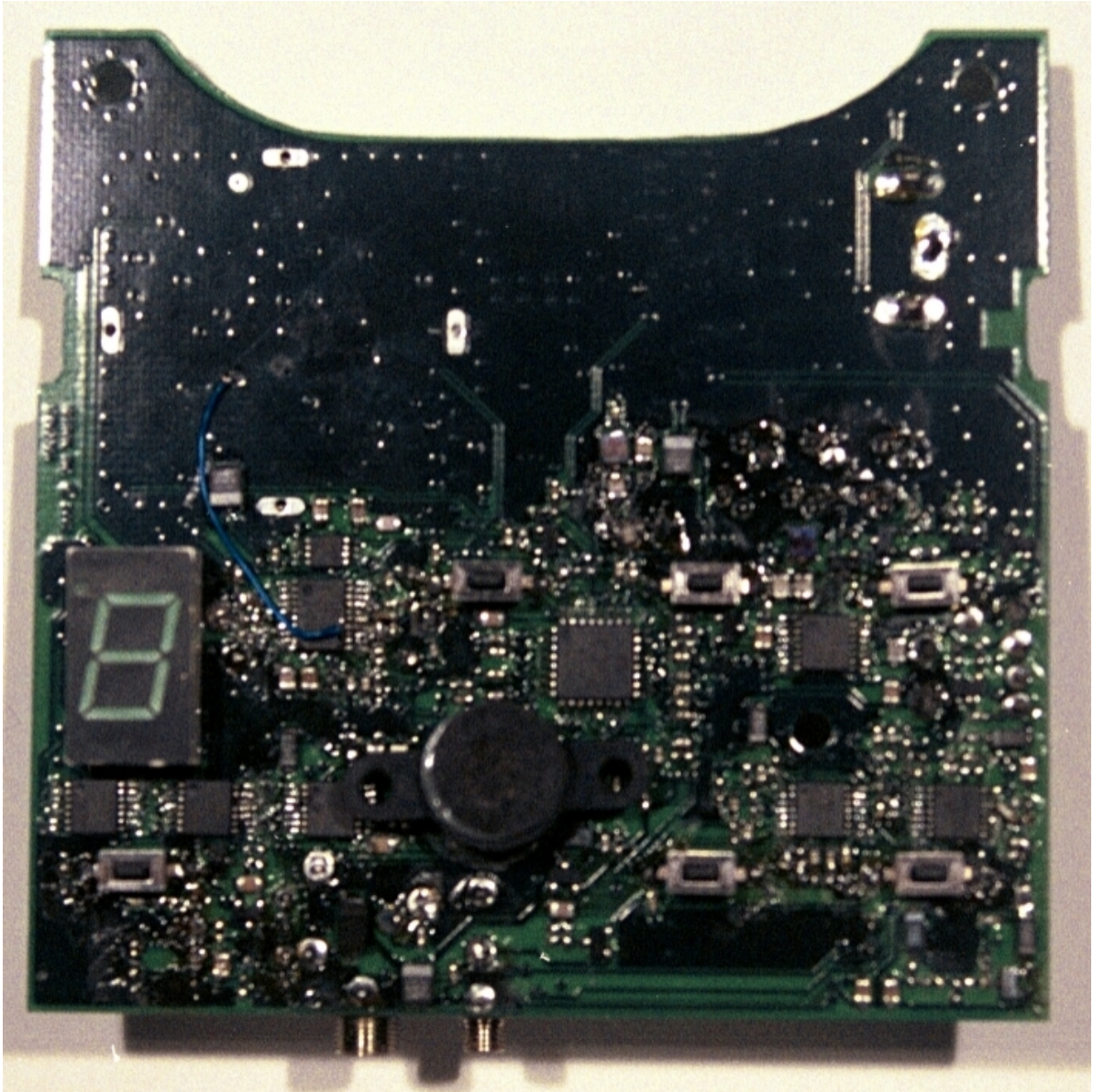
Included in this exhibit are photographs of the RITRON Model PBS-446D UHF-FM Base Transceiver printed circuit board assembly and installation.

Additional photographs of the equipment of sufficient clarity to reveal equipment construction and layout, labels for controls and meters, and chassis assembly are included with this Certification request as separate exhibits.

Signed:



Michael A. Pickard - Project Engineer



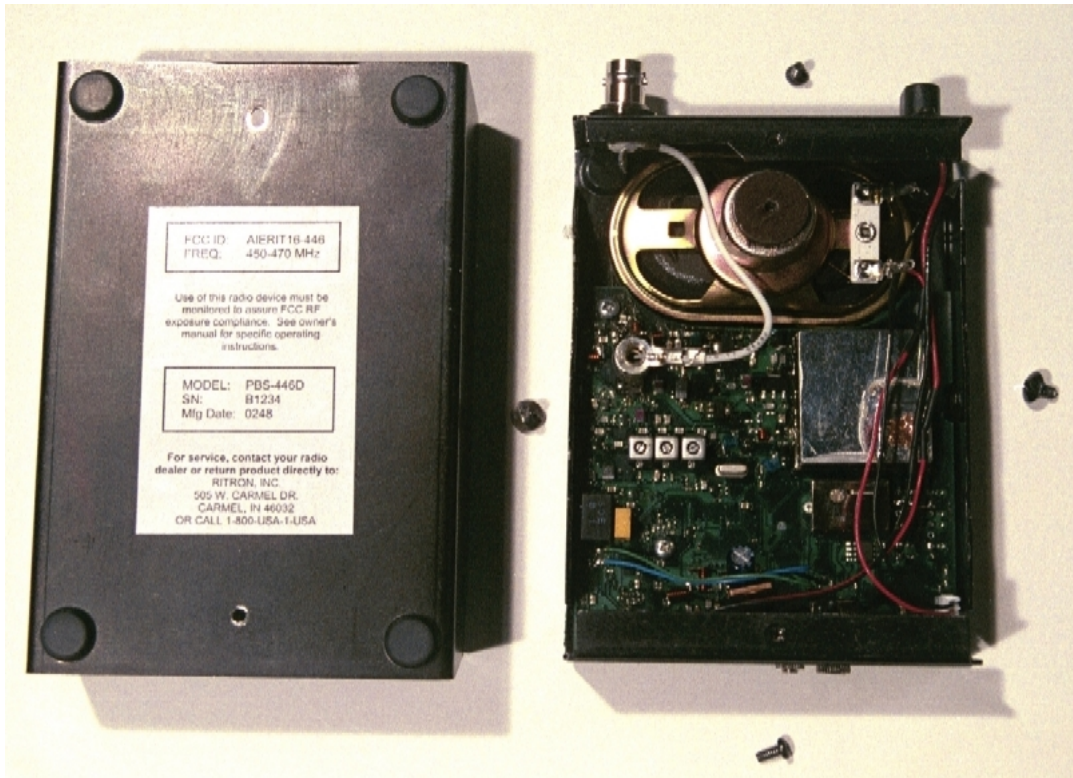
**EXHIBIT:** PBS-446D complete topside PCB assembly  
**FCC ID:** AIERIT16-446



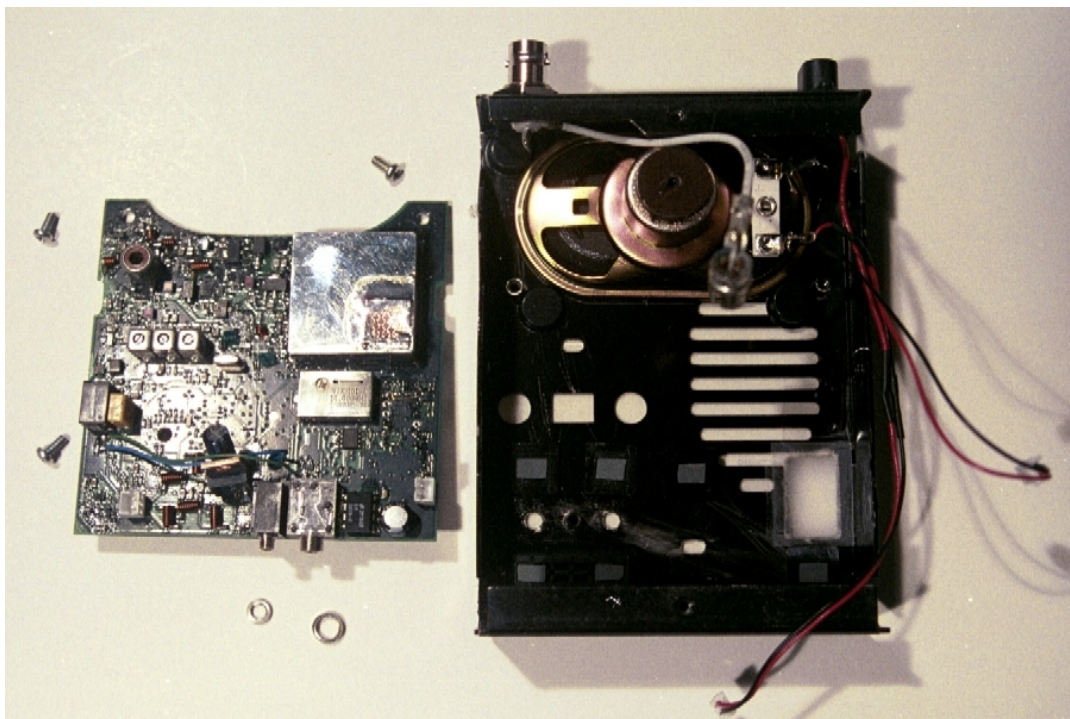


**EXHIBIT:** PBS-446D complete bottom side PCB assembly  
**FCC ID:** AIERIT16-446





**EXHIBIT:** PBS-446D with case bottom off to show printed circuit board installation  
**FCC ID:** AIERIT16-446



**EXHIBIT:** PBS-446D with printed circuit board removed from case top  
**FCC ID:** AIERIT16-446