

TYPE OF EXHIBIT: SCHEMATIC AND COMPONENT PLACEMENT DRAWINGS

FCC PART: 2.1033 (c)(10,12)

MANUFACTURER: RITRON, INC.
505 West Carmel Drive
Carmel, IN 46032

MODEL: PBS-146D

TYPE OF UNIT: VHF-FM Base Transceiver

FCC ID: AIERIT16-146

DATE: February 4, 2003

Included in this exhibit are schematic and component placement drawings for the RITRON Model PBS-146D VHF-FM Base Transceiver per FCC Parts 2.1033(c)(10) and 2.1033(c)(12).

Descriptions of all circuitry and devices provided for determining and stabilizing frequency, for suppression of spurious radiation, for limiting modulation, and for limiting power are provided in the Maintenance Manual, which is included with this Certification request as a separate exhibit.

Additional photographs of the equipment of sufficient clarity to reveal equipment construction and layout, labels for controls and meters, and sufficient views of the internal construction to define component placement and chassis assembly are included with this Certification request as a separate exhibit.

Signed:


Kevin G. Matson - Project Engineer

6

5

4

3

2

1

D

D

C

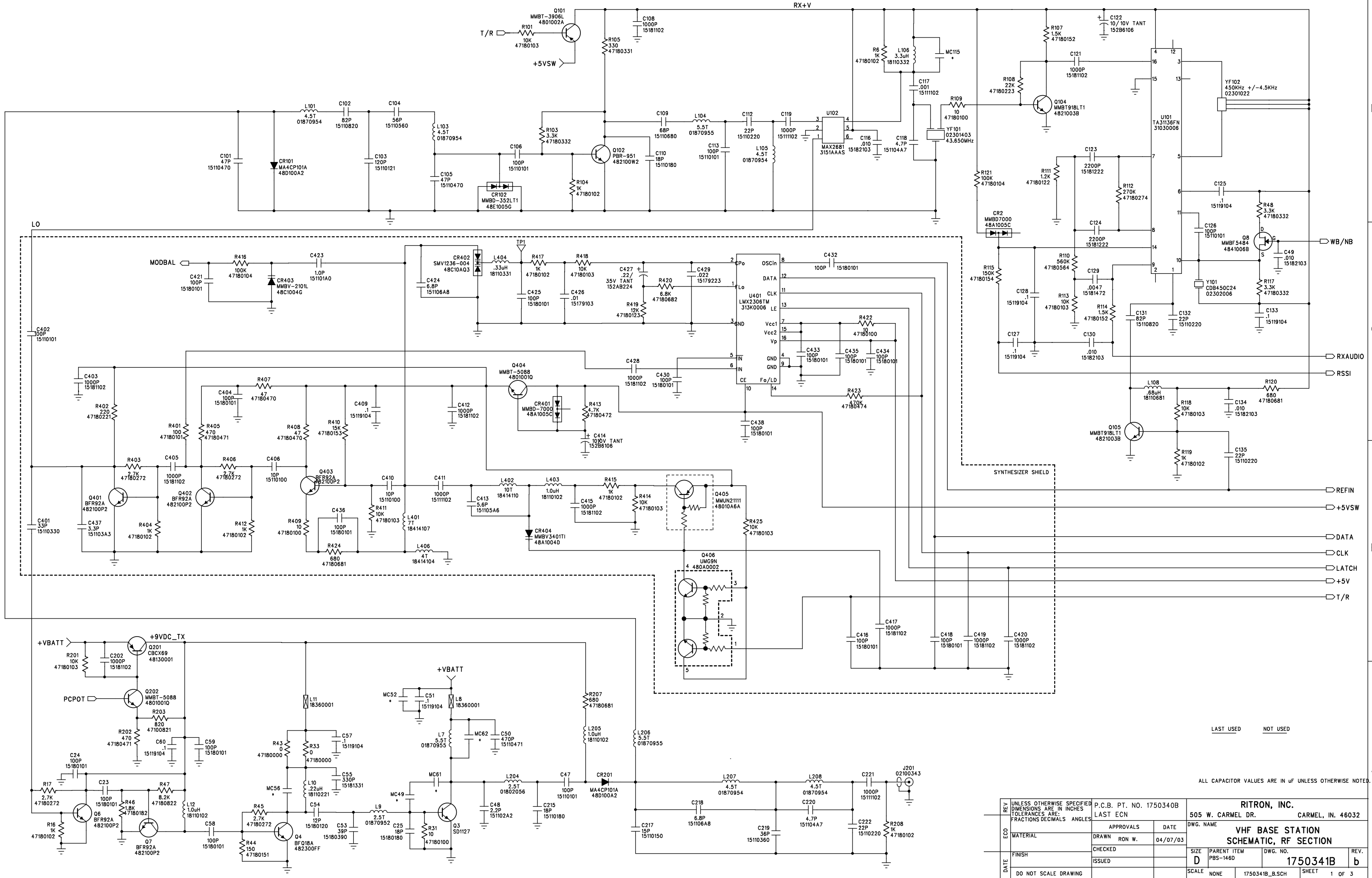
C

B

B

A

A



6

5

4

3

2

1

REVISION RECORD			
LTR	ECO NO:	APPROVED:	DATE:

D

D

C

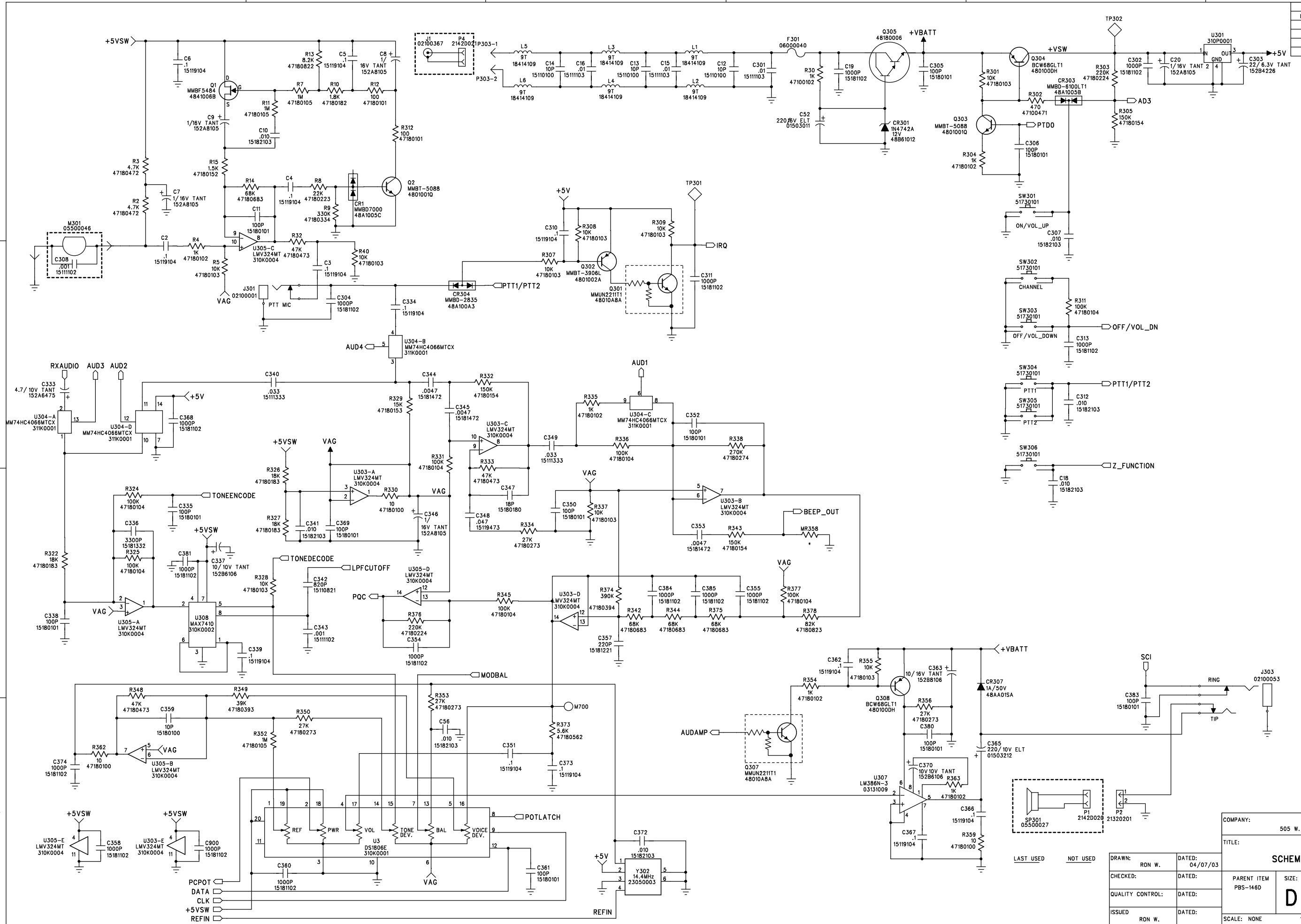
C

B

B

A

A



COMPANY: RITRON, INC 505 W. CARMEL DR., CARMEL, IN. 46032			
TITLE: VHF BASE STATION SCHEMATIC, CONTROL SECTION			
PARENT ITEM PBS-146D	SIZE: D 1750341B	DRAWING NO:	REV: B
SCALE: NONE	1750331B_B.SCH	SHEET: 2	003

6

5

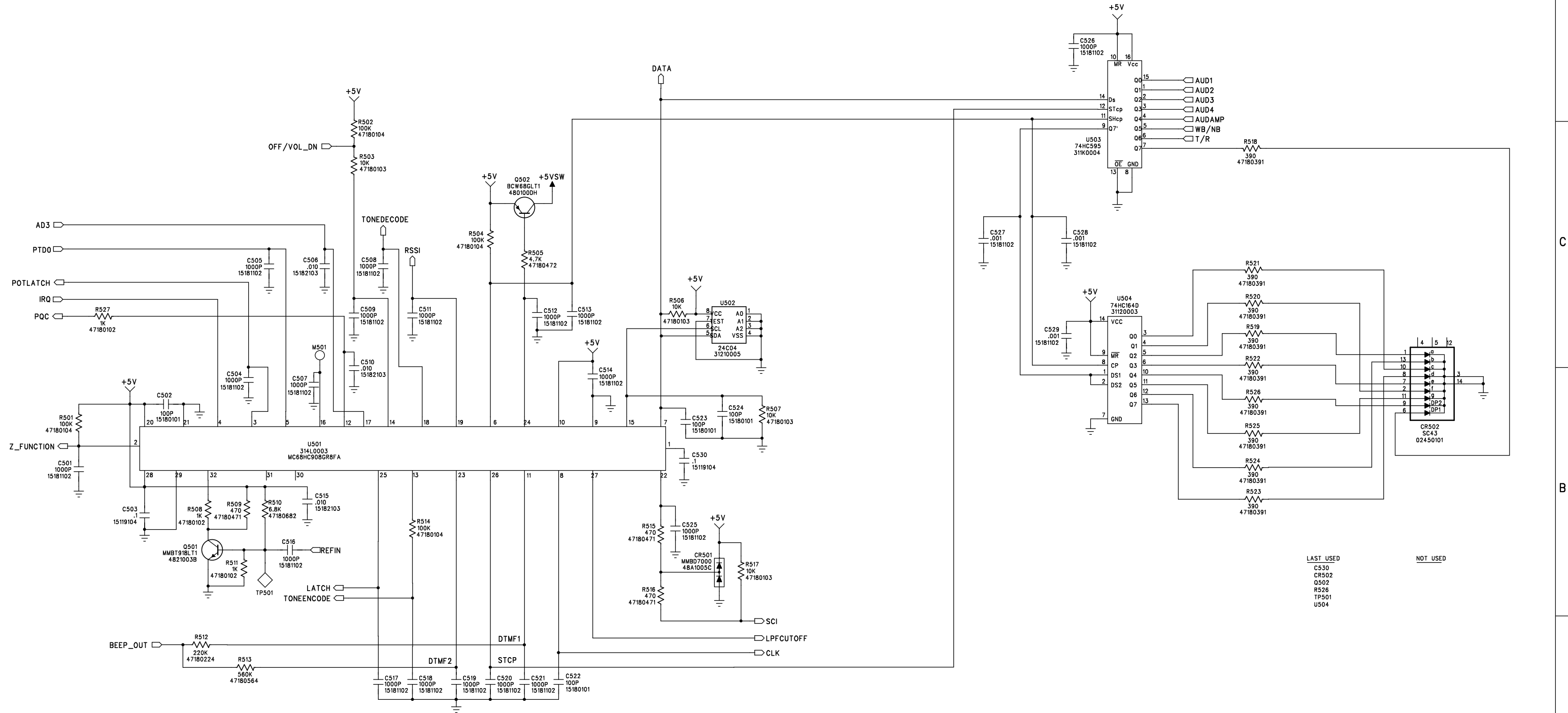
4

3

2

1

REVISION RECORD			
LTR	ECO NO:	APPROVED:	DATE:



LAST USED
C530
CR502
Q502
R526
TP501
U504

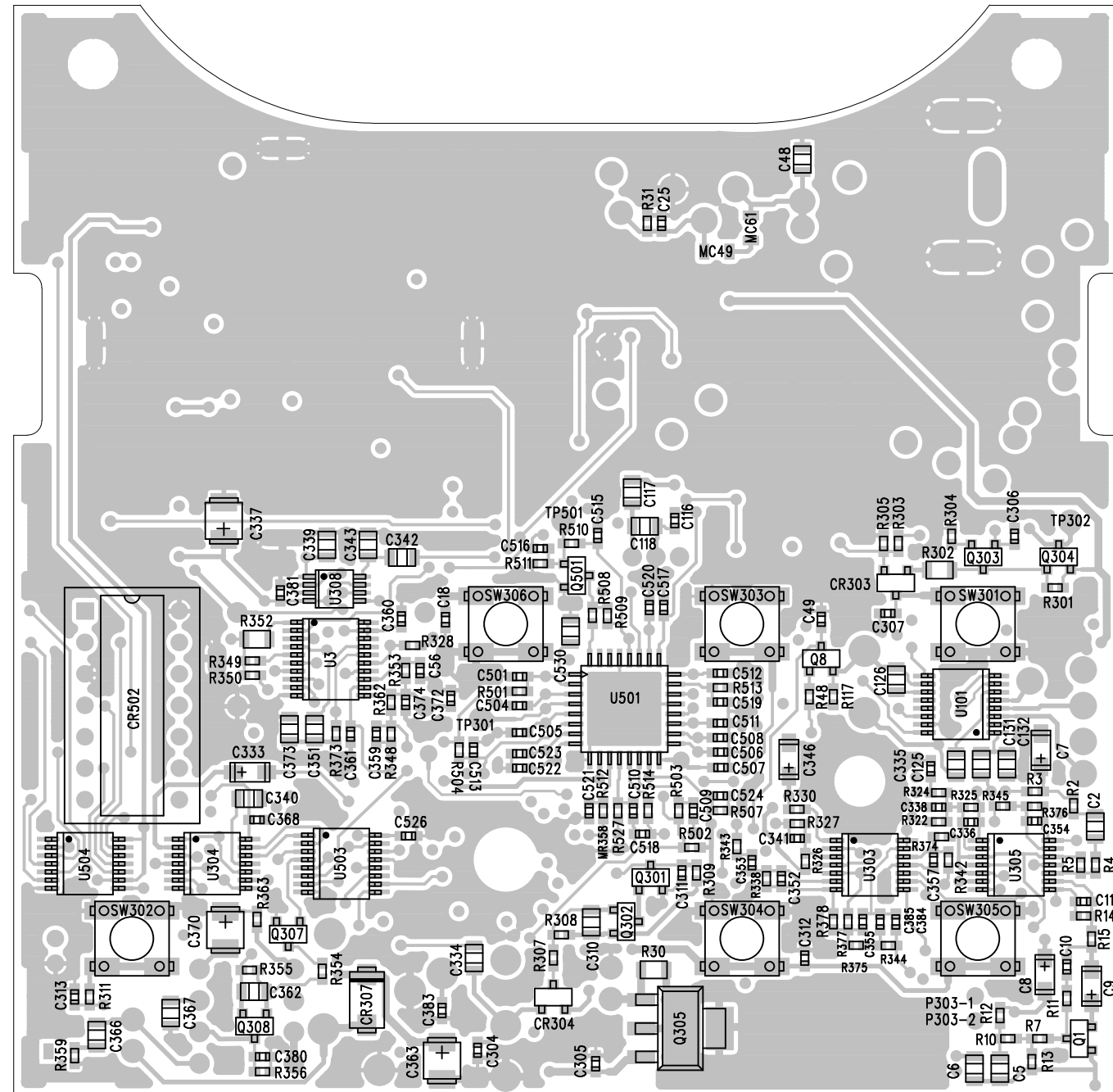
NOT USED

COMPANY:		RITRON, INC.			
		505 W. CARMEL DR.,		CARMEL, IN. 46032	
TITLE:		VHF BASE STATION SCHEMATIC, PROCESSOR SECTION			
PARENT ITEM PBS-146D		SIZE: D	DRAWING NO: 1750341B		REV: B
SCALE:		1730331B_B.SCH		SHEET: 3 OF 3	

D 1750341B B

TOP (PRIMARY) SIDE COMPONENT REF. DES.

1750340B



BOTTOM (SECONDARY) SIDE COMPONENT REF. DES. 1750340B

