

TYPE OF EXHIBIT: INTERNAL PHOTOGRAPHS
FCC PART: 2.1033 (c)(12)
MANUFACTURER: RITRON, INC.
505 West Carmel Drive
Carmel, IN 46032
MODEL: PBS-146D
TYPE OF UNIT: VHF-FM Base Transceiver
FCC ID: AIERIT16-146
DATE: February 4, 2003

Included in this exhibit are photographs of the RITRON Model PBS-146D VHF-FM Base Transceiver printed circuit board assembly and installation.

Signed:


Kevin G. Matson - Project Engineer

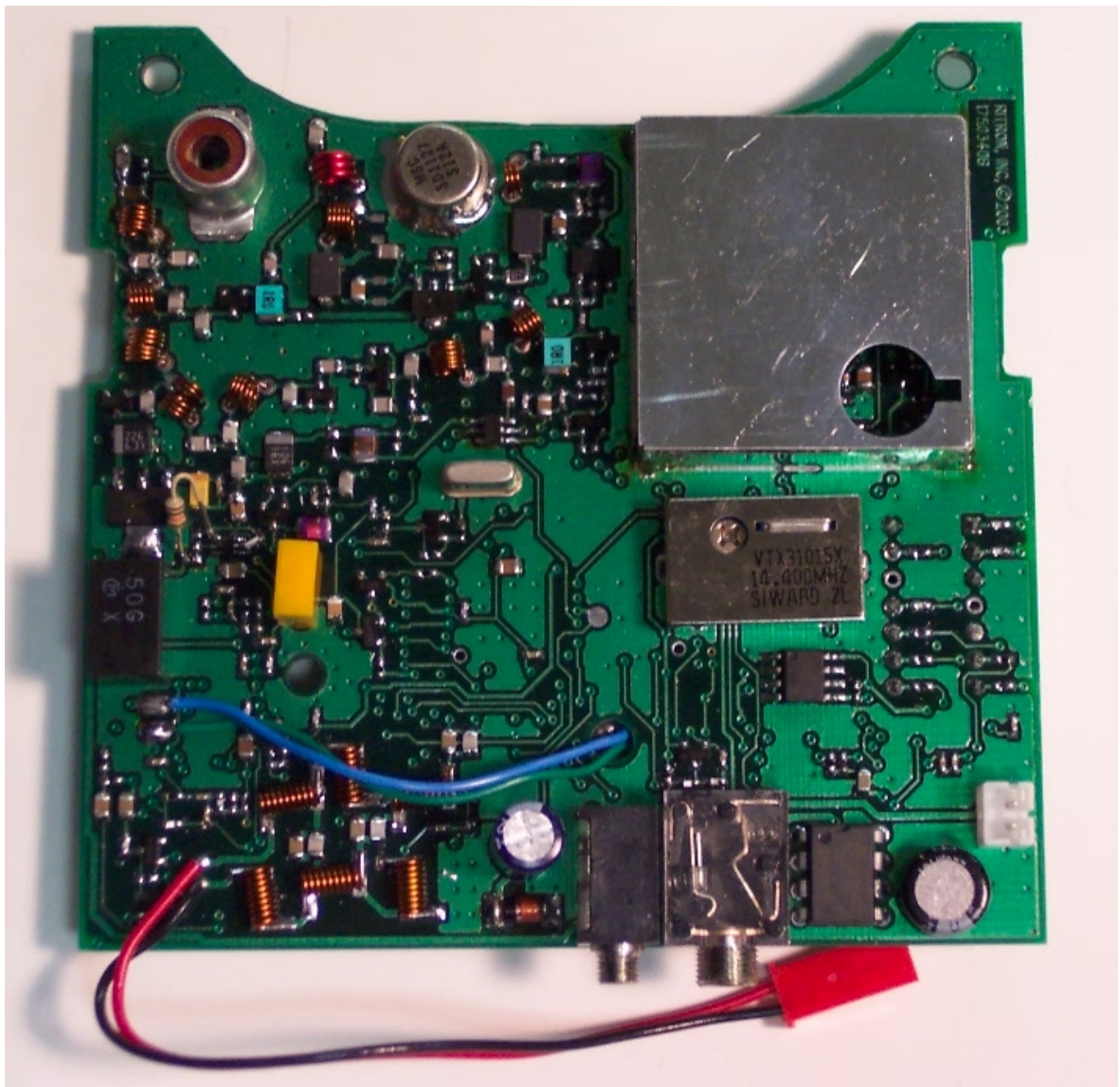


EXHIBIT: PBS-146D complete topside PCB assembly
FCC ID: AIERIT16-146

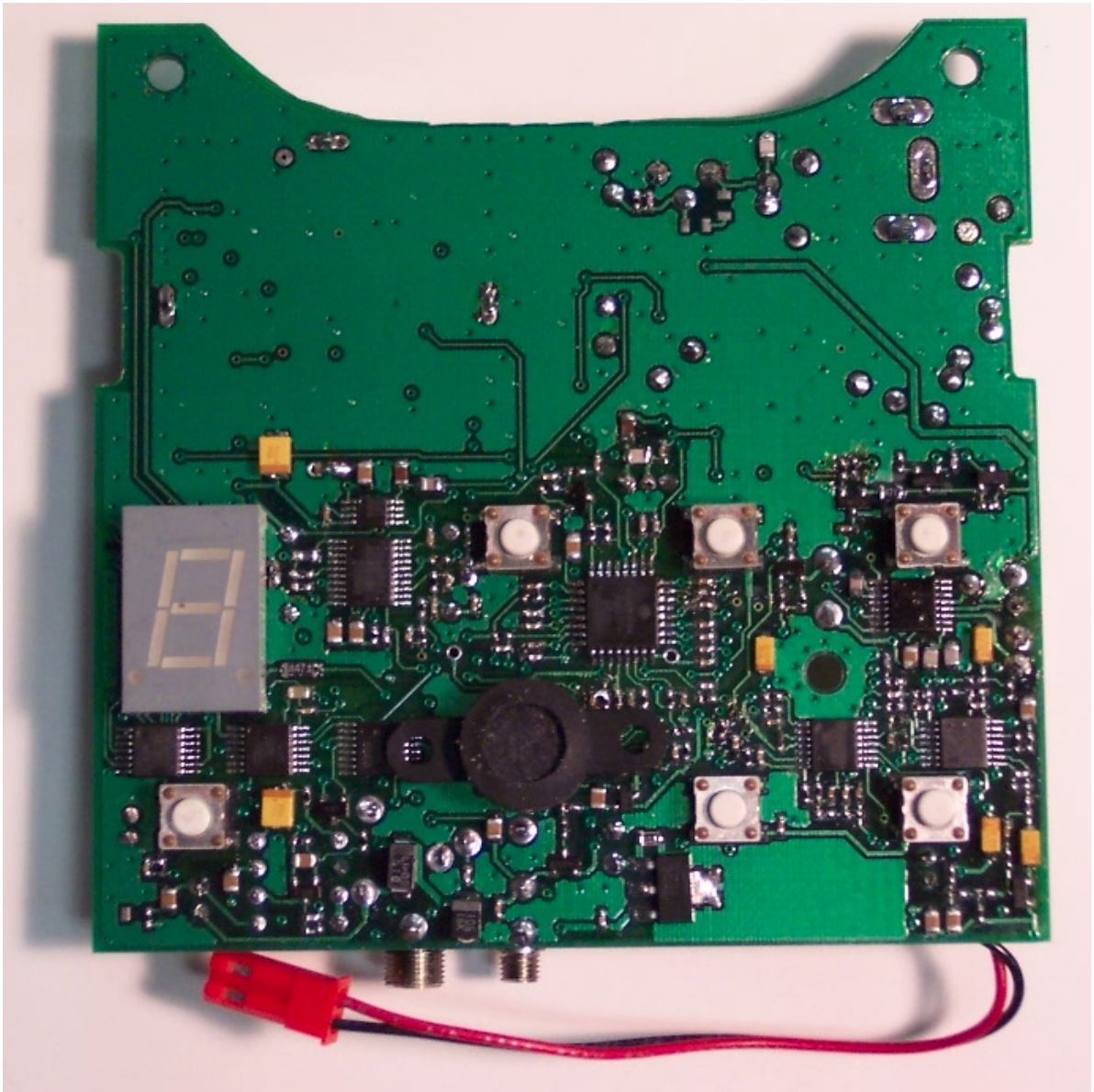


EXHIBIT: PBS-146D complete bottom side PCB assembly
FCC ID: AIERIT16-146

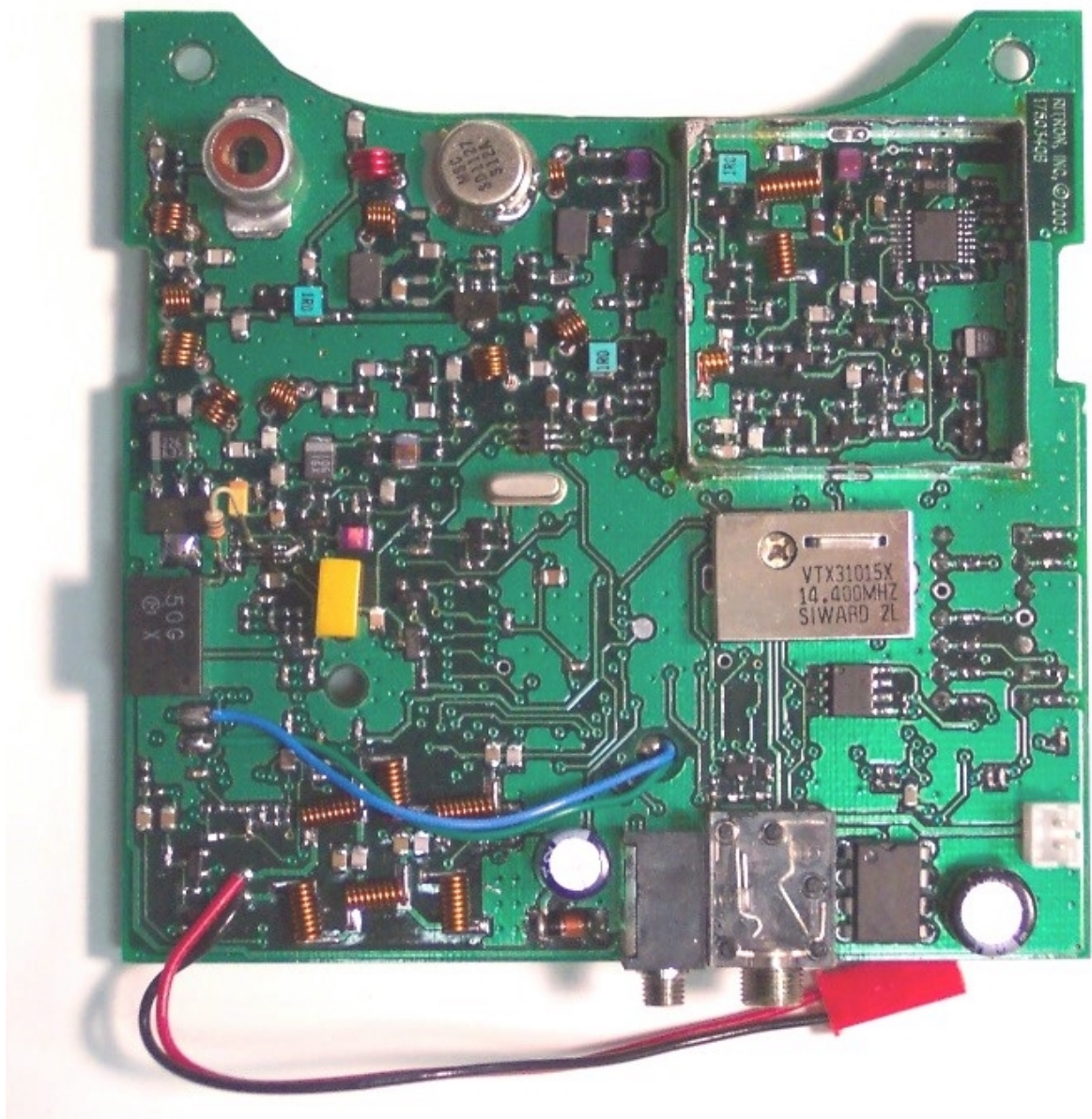


EXHIBIT: PBS-146D complete bottom side PCB assembly with VCO Shield removed
FCC ID: AIERIT16-146

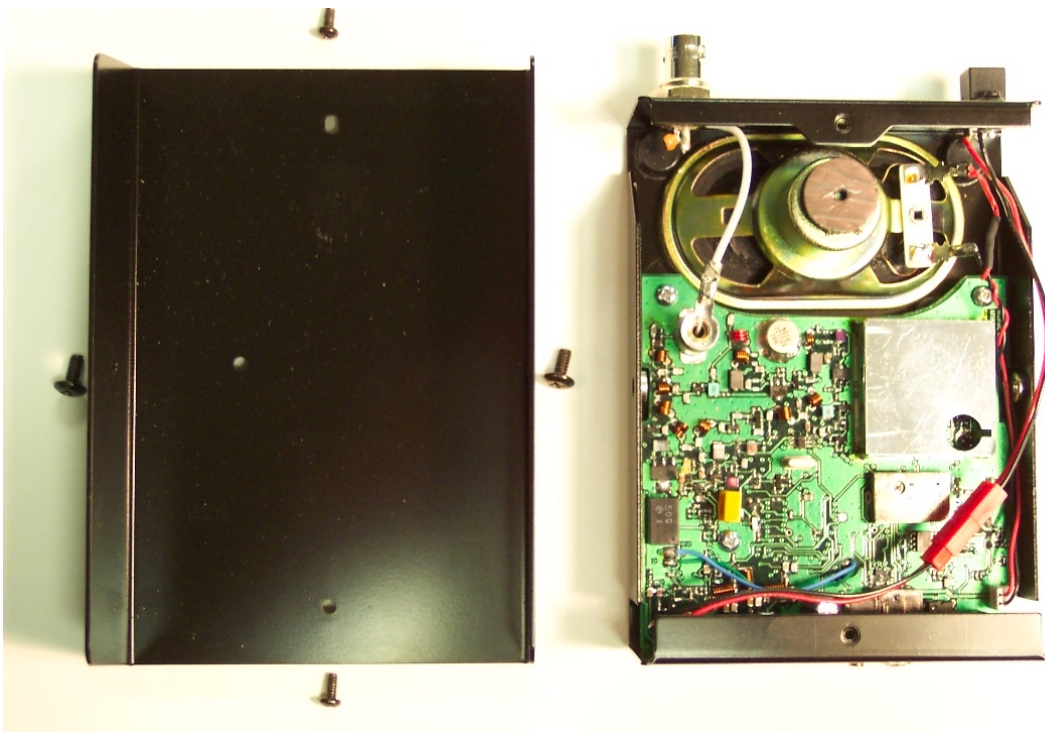


EXHIBIT: PBS-146D with case bottom off to show printed circuit board installation
FCC ID: AIERIT16-146

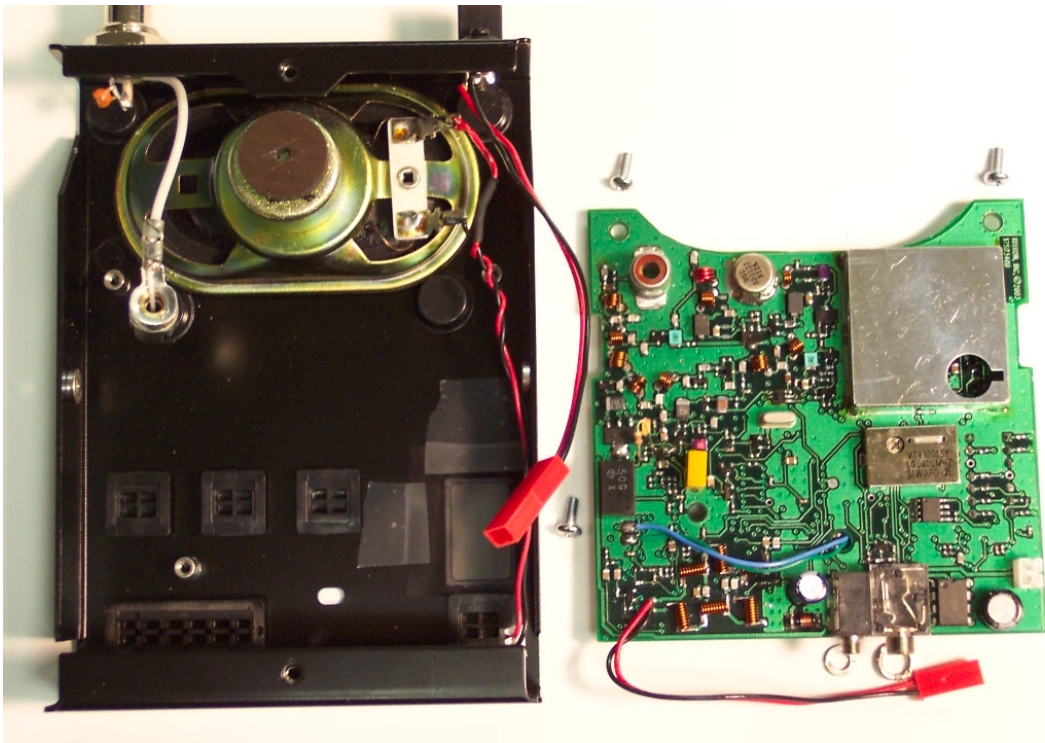


EXHIBIT: PBS-146D with printed circuit board removed from case top
FCC ID: AIERIT16-146