

TYPE OF EXHIBIT: SCHEMATIC AND COMPONENT PLACEMENT DRAWINGS

FCC PART: 2.1033 (c)(10,12)

MANUFACTURER: RITRON, INC.
505 West Carmel Drive
Carmel, IN 46032

MODEL: SST-144

TYPE OF UNIT: VHF-FM Handheld Transceiver

FCC ID: AIERIT13-144

DATE: May 17, 2001

Included in this exhibit are schematic and component placement drawings for the RITRON Model SST-144 VHF-FM Handheld Transceiver per FCC Parts 2.1033(c)(10) and 2.1033(c)(12).

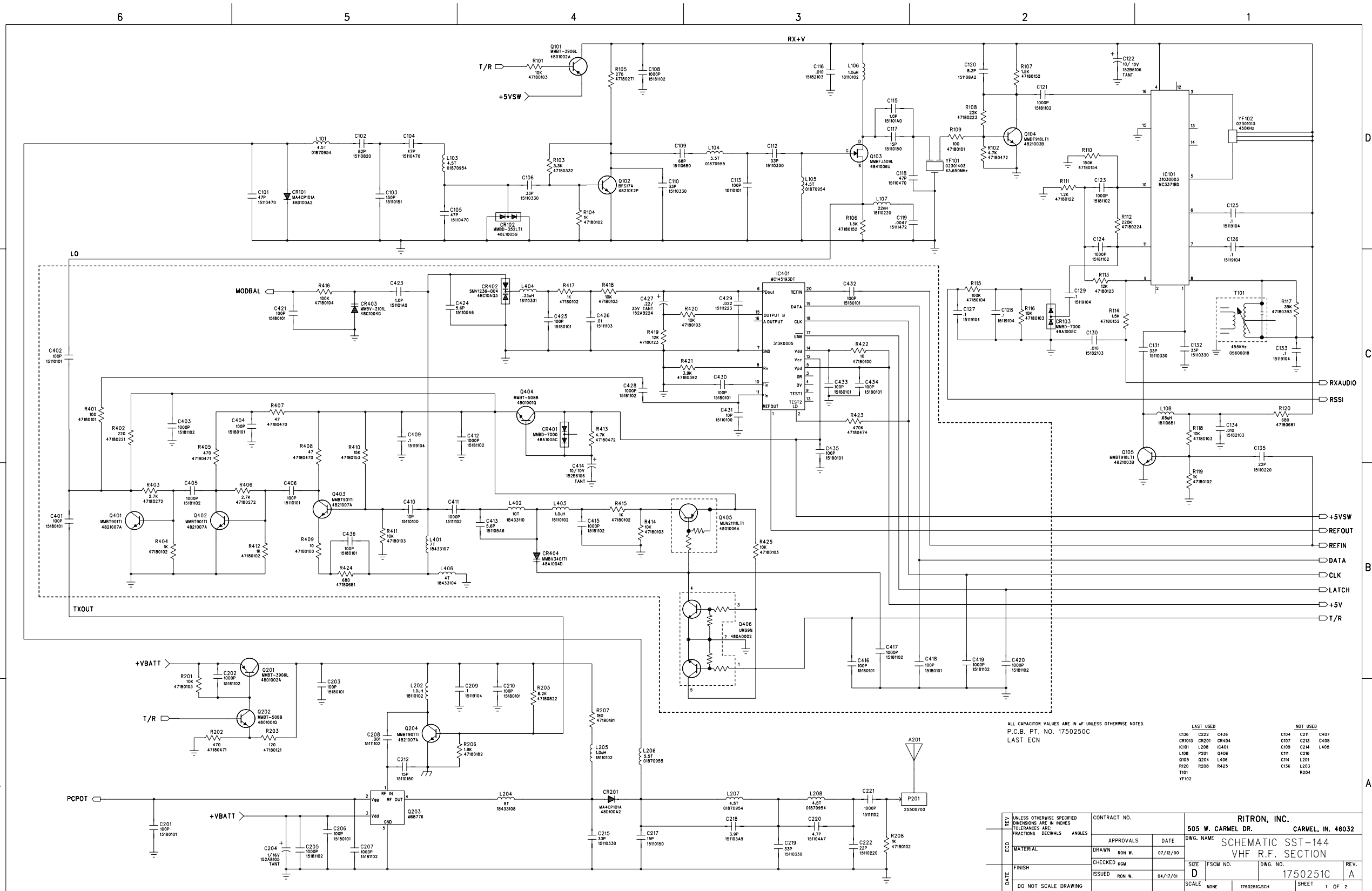
Descriptions of all circuitry and devices provided for determining and stabilizing frequency, for suppression of spurious radiation, for limiting modulation, and for limiting power are provided in the Maintenance Manual, which is included with this Certification request as a separate exhibit.

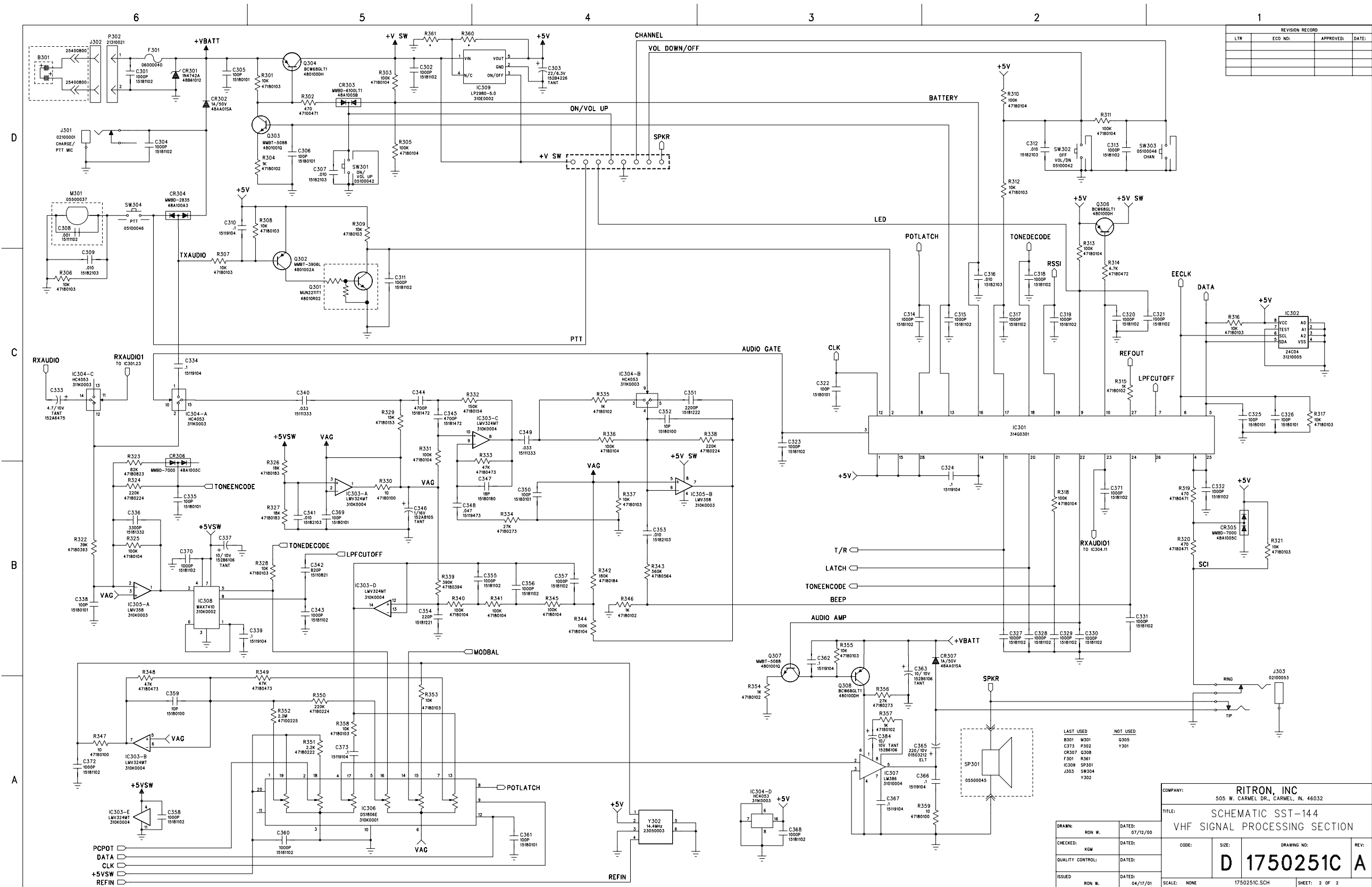
Additional photographs of the equipment of sufficient clarity to reveal equipment construction and layout, labels for controls and meters, and sufficient views of the internal construction to define component placement and chassis assembly are included with this Certification request as a separate exhibit.

Signed:

A handwritten signature in black ink that reads "Kevin G. Matson". The signature is fluid and cursive, with the first letters of the first and last names being capitalized and prominent.

Kevin G. Matson - Project Engineer



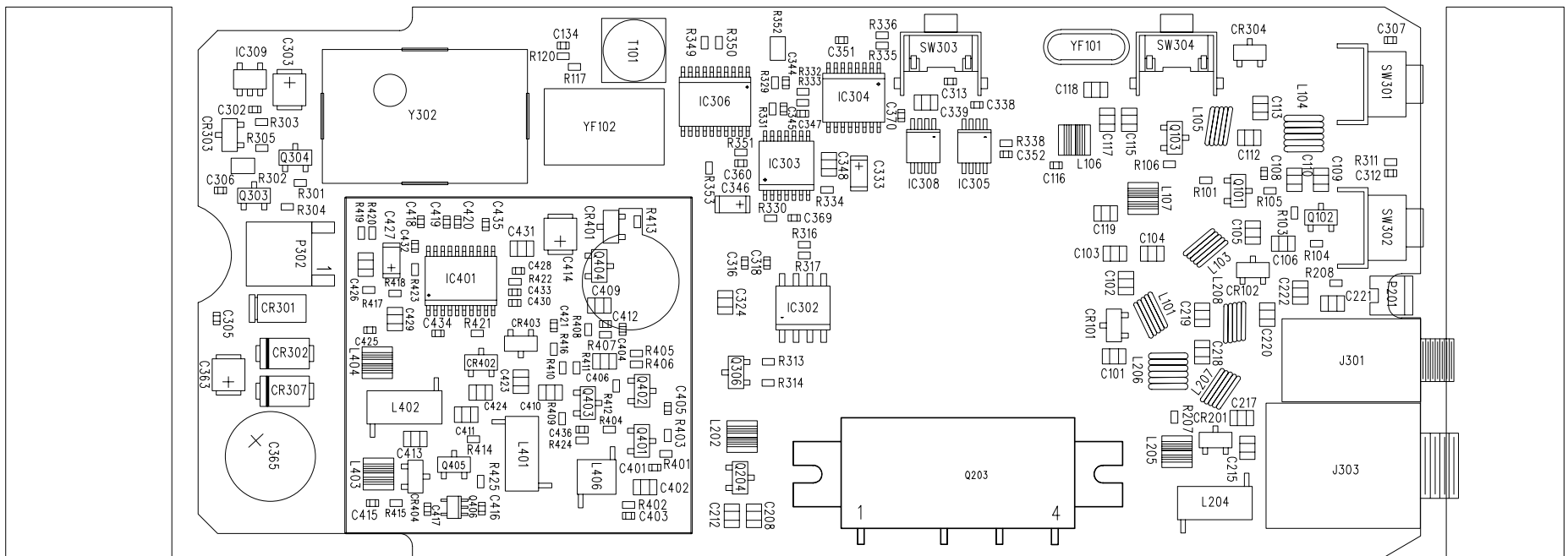


REVISION RECORD			
LTR	ECO NO.	APPROVED:	DATE:

LAST USED				NOT USED			
B301	M301	Q305	Y301				
C373	P302	CR307	Q308				
F301	R361	IC309	SP301				
J303	SW304	Y302					

DRAWN: RON W.		DATED: 07/12/00	
CHECKED: KGM		DATED:	
QUALITY CONTROL:		DATED:	
ISSUED:		DATED: 04/17/01	

COMPANY: RITRON, INC			
505 W. CARMEL DR., CARMEL, IN. 46032			
TITLE: SCHEMATIC SST-144			
VHF SIGNAL PROCESSING SECTION			
CODE:	SIZE:	DRAWING NO:	REV:
D 1750251C		A	
SCALE: NONE	1750251C.SCH	SHEET: 2 OF 2	



SCHEMATIC 1750251C
LAST ECN

TOP SIDE PARTS PLACEMENT W/REF.DES.
RITRON, INC. 1750250C 02/23/01

SST-144 1750252C

