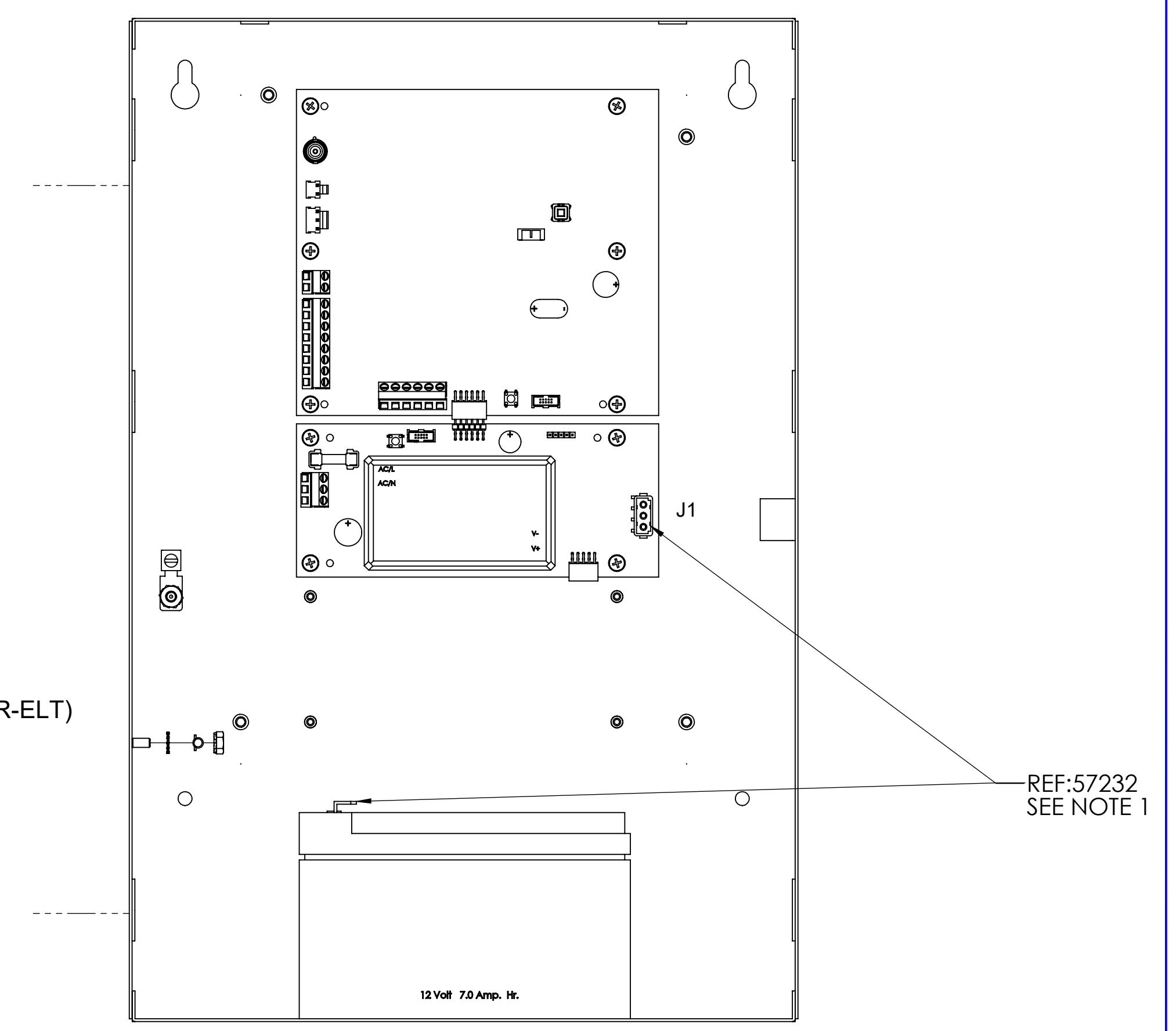
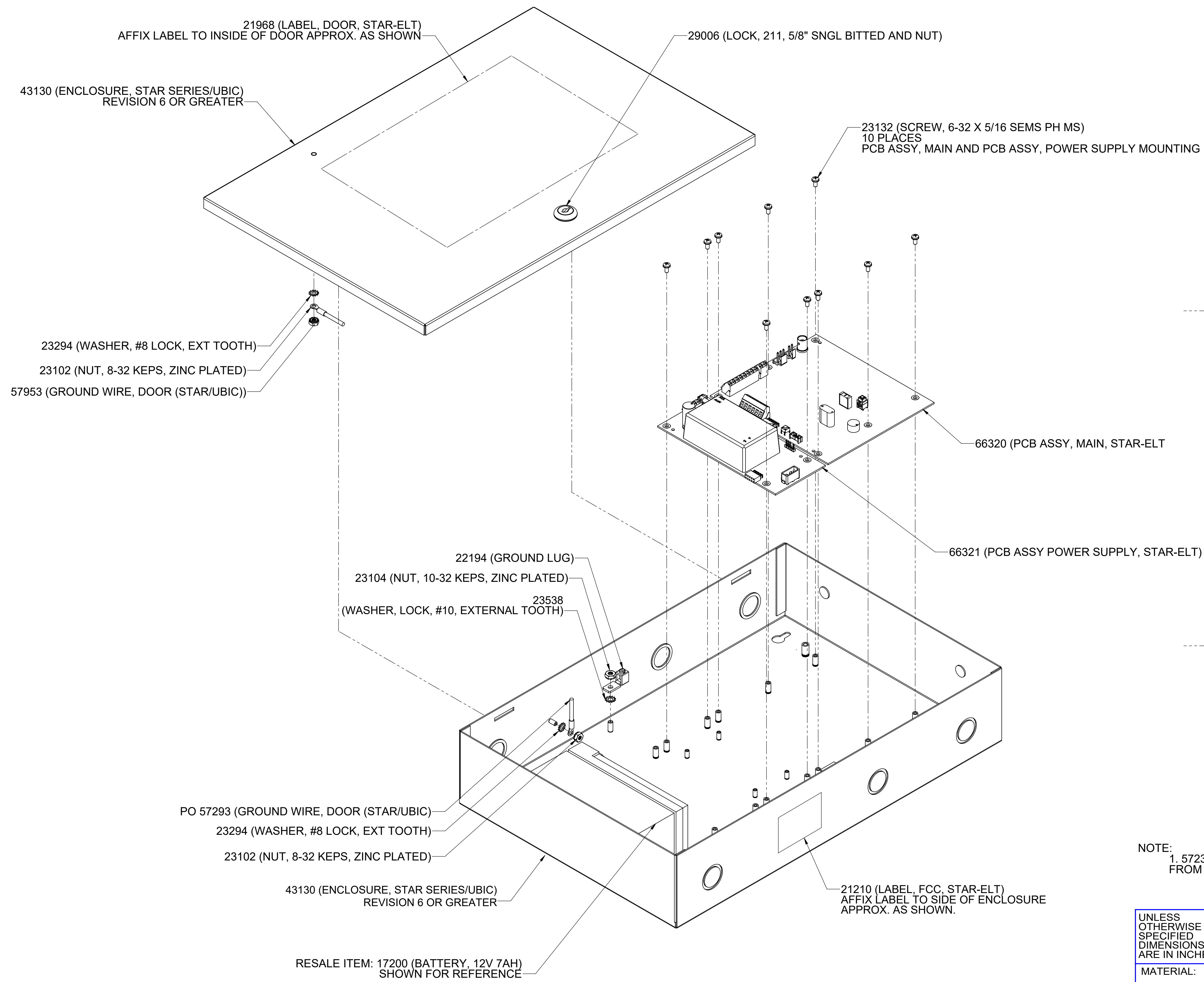


THIS DRAWING CONTAINS DESIGNS AND OTHER INFORMATION WHICH ARE THE PROPERTY OF KINGFISHER COMPANY, INC. EXCEPT FOR RIGHTS EXPRESSLY GRANTED BY CONTRACTS TO THE UNITED STATES GOVERNMENT. THIS DRAWING MAY NOT, IN WHOLE OR IN PART, BE DUPLICATED OR USED FOR MANUFACTURE OF THE PART DISCLOSED HEREIN, WITHOUT THE PRIOR WRITTEN PERMISSION OF KINGFISHER COMPANY, INC.

REV	ECO	DESCRIPTION	BY	APRVD	DATE
0	19-0007	PRODUCTION RELEASE	P.SP	A.NO	08/27/2020



NOTE:  
1. 57232 CABLE ASSY, BATTERY 12INCH, STAR-ELT. NOT SHOWN ON DRAWING. CONNECTS FROM 66321 POWER SUPPLY J1 BATTERY CONNECTOR TO (+) AND (-) BATTERY TERMINALS.

UNLESS OTHERWISE SPECIFIED DIMENSIONS ARE IN INCHES	TOLERANCE ON: FRACTIONAL ± 1/64 ANGULAR ± 1° 2 PLACE DECIMAL ± .01 3 PLACE DECIMAL ± .005	DFT	P.SPANOS	<b>KCi</b> Kingfisher Company, Inc. 81 OLD FERRY ROAD, LOWELL, MA. 01854 PHONE: 978-596-0214 FAX: 978-596-0217
MATERIAL:	SEE BOM	CHK	P.SPANOS	
TITLE: STAR-ELT W/ POWER SUPPLY				DATE
DATE				07/10/2020
SCALE				1/2
SHEET 1 OF 1				SIZE DWG. NO.
D				99420-ASM
REV				0