

SECTION ADJUSTMENT PROCEDURES

PREPARATION

When you adjust the contents on page 5-6 or 5-7, SOFTWARE ADJUSTMENT, the optional CS-F30G ADJUSTMENT SOFTWARE, OPC-966 cloning cable and RS-232C straight cable are required.

REQUIRED TEST EQUIPMENT

EQUIPMENT	GRADE AND RANGE	EQUIPMENT	GRADE AND RANGE
DC power supply	Output range 7.5V DC	Audio generator	Frequency range 300-3000Hz
	Current capacity 5A or more		Output level 1-500mV
RF power meter	Measuring range 1-10W	Attenuator	Power attenuator 40 or 50dB
	Frequency range 120-500MHz		Capacity 10W or more
	SWR Less than 1.2:1	Standard signal generator	Frequency range 120-500MHz
Frequency counter	Frequency range 0.1-500MHz		Output level 0.1uV-32mV
	Frequency accuracy 1ppm or better	DC voltmeter	Input impedance 50k Ω V DC or better
Sensitivity 100mV or better	Oscilloscope		Frequency range DC-20MHz
FM deviation meter		Frequency range DC-500MHz	Measuring range 0.01-20V
	Measuring range 0 to 5kHz	AC millivoltmeter	Measuring range 10mV-10V
Digital multimeter	Input impedance 10M Ω V DC or better		

SYSTEM REQUIREMENTS

- IBM PC compatible computer with an RS-232C serial port
- Microsoft Windows95 or Windows98
- Intel i486DX processor or faster (Pentium 100MHz or faster recommended)
- At least 16MB RAM and 10MB of hard disk space
- 640 x 480 pixel display (800 x 600 pixel display recommended)

ADJUSTMENT SOFTWARE INSTALLATION

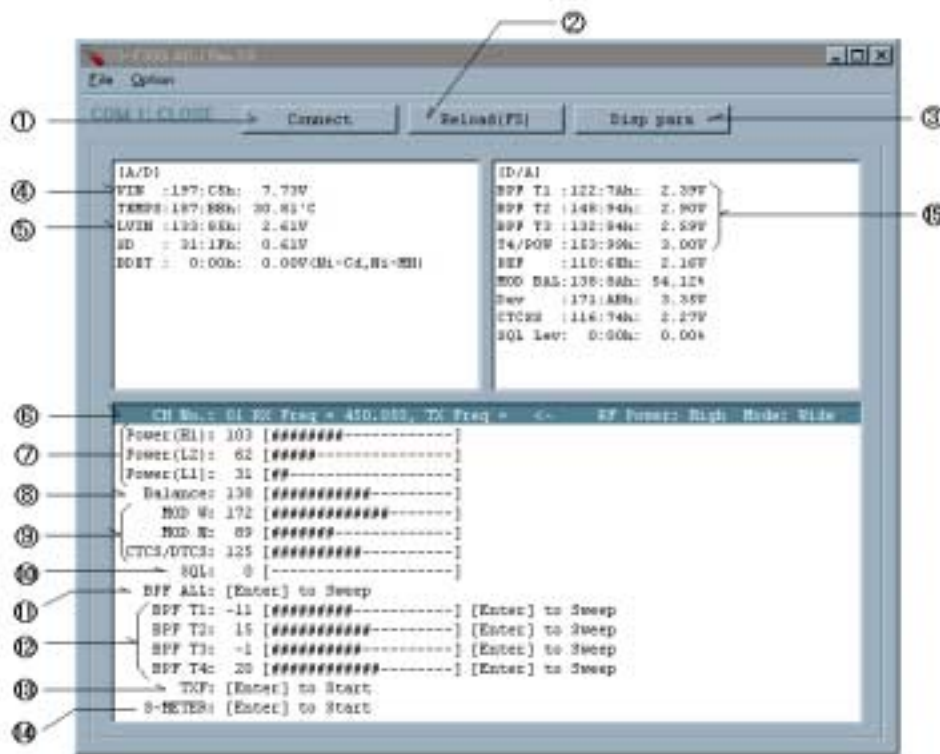
NOTE: Before using the program, make a backup copy of the original disk.
After making a backup copy, keep the original disk in a safe place.

1. Boot up Windows. – Quit all applications when Windows is running.
2. Insert the backup disk1 into the appropriate floppy drive.
3. Select 'Run' from the [Start] menu.
4. Type the setup program name using the full path name, then push the [Enter] key.
5. Follow the prompts.
6. Program group 'CS-F30G ADJ' appears in the 'Programs' folder of the [start] menu.

STARTING SOFTWARE ADJUSTMENT

1. Connect IC-F30GT/GS and PC with the optional OPC-966 and RS-232C straight cable.
2. Boot up Windows, and turn the transceiver power ON.
3. Click the program group 'CS-F30G ADJ' in the 'Programs' folder of the [Start] menu,
Then CS-F30G ADJ's window is appeared.
4. Click 'Connect' on the CS-F30G's window, then appears
5. IC-F30GT/GS's up-to-date condition. Set or modify adjustment data as desired.

IBM is a registered trademark of International Business Machines Corporation in the U.S.A. And other countries. Microsoft and Windows are registered trademarks of Microsoft Corporation in the U.S.A. and other countries. Screen shots produced with permission from Microsoft Corporation. All other products or brands are registered trademarks or trademarks of their respective holders.

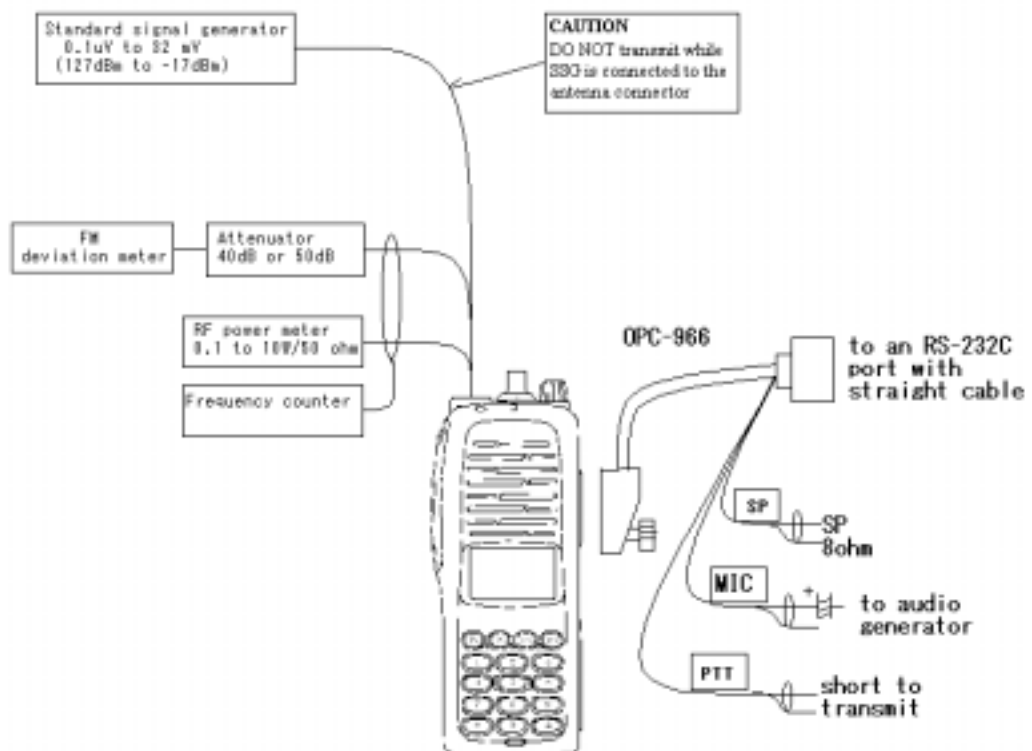


ADJUSTMENT SOFTWARE SCREEN DISPLAY EXAMPLE

NOTE: The above values for settings are example only.

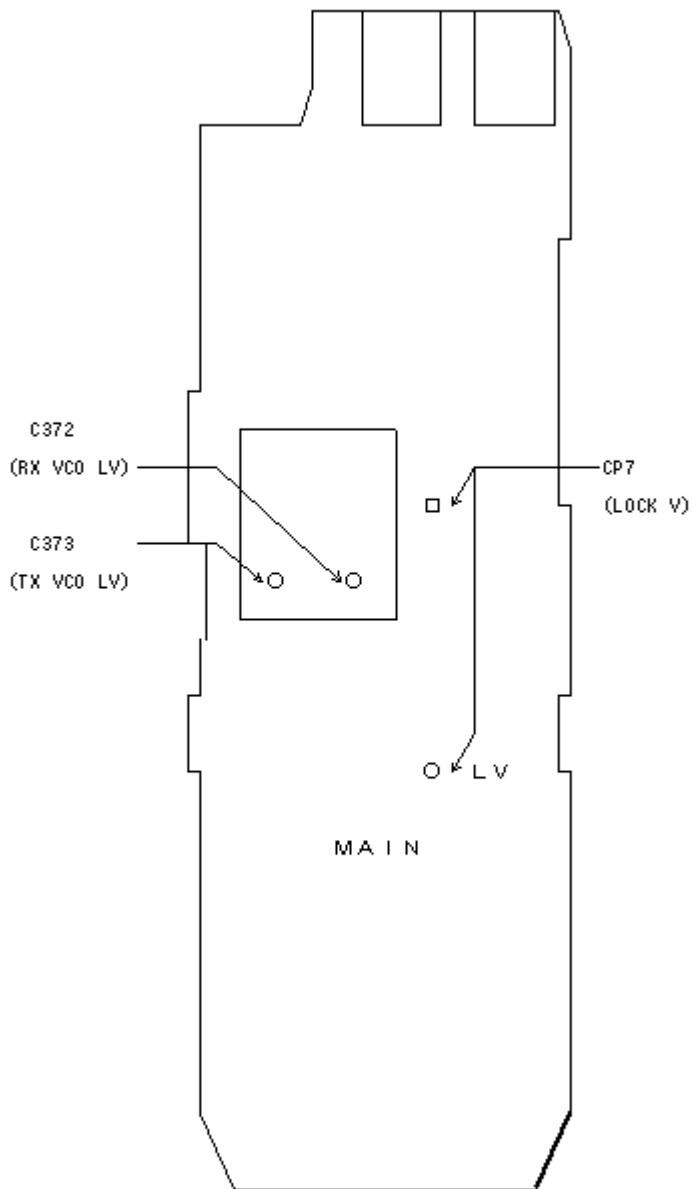
Each transceiver has its own specific values for each setting.

- | | |
|-----------------------------------|---|
| 1: Transceiver's connection state | 9: FM deviation |
| 2: Reload adjustment data | 10: Squelch level |
| 3: Display adjustment data | 11: Receive sensitivity (automatically) |
| 4: Connected DC voltage | 12: Receive sensitivity (manually) |
| 5: PLL lock voltage | 13: Reference frequency |
| 6: Operating channel select | 14: S-meter |
| 7: RF output power | 15: Receive sensitivity measurement |
| 8: Flat wave form balance | |



□ CONNECTION

PLL LOCK VOLTAGE ADJUSTMENT POINT



PLL ADJUSTMENT

ADJUSTMENT	ADJUSTMENT CONDITIONS	MEASUREM ENT		VALUE	ADJUSTMENT	
		UNIT	LOCATION		UNIT	ADJUST
PLL LOCK VOLTAGE	Operating frequency: 450.000MHz	MAIN	Connect a digital multimeter to CP7		MAIN	
	Receiving			1.3V		C372
	Transmitting			1.3V		C373
	Operating frequency: 490.000MHz					
	Receiving			3.0-4.5V		Verify
	Transmitting			3.0-4.5V		Verify

SOFTWARE ADJUSTMENT

Select an operating using [] / [] keys, then set specified value using [] / [] keys on the computer keyboard.

ADJUSTMENT	ADJUSTMENT CONDITION	MEASUREM ENT		VALUE
		UNIT	LOCATION	
REFERENCE FREQUENCY	Operating frequency: 450.000MHz High/Low switch: Low1 Connect the RF power meter or 50 ohm m v load to the antenna connector Transmitting	Top panel	Loosely couple a frequency counter to the antenna connector	450.000MHz
OUTPUT POWER (HI)	Operating frequency: 450.000MHz High/Low switch: High Transmitting	Top panel	Connect an RF power meter to the antenna connector	4.0W
OUTPUT POWER	High/Low switch: Low2 Transmitting			2.0W
OUTPUT POWER	High/Low switch: Low1 Transmitting			1.0W
WAVE FORM BALANCE	Operating frequency: 450.000MHz High/Low switch: Low1 Set the FM deviation meter as: HPF OFF LPF 20kHz De-emphasis OFF Detector (p-p)/2 Wide/Narrow switch: Wide Transmitting and push [P0] key	Top panel	Connect an FM deviation meter to the antenna connector through the attenuator.	Set flat wave form
FM DEVIATION [MOD] WODE	Operating frequency: 450.000MHz High/Low switch: Low1 Connect the audio generator to OPC -966 and set as: 1kHz/ 150mV Wide/Narrow switch: Wide Transmitting	Top panel	Connect an FM deviation meter to the antenna connector through the attenuator.	4.1kHz
FM DEVIATION [MOD] NAR	Wide/Narrow switch: Narrow Transmitting			2.1kHz
CTCSS TONE DEVIATION	Operating frequency: 450.000MHz High/Low switch: Low1 Wide/Narrow switch: Wide No audio applied to the MIC line. CTCSS tone :88.5Hz Transmitting	Top panel	Connect an FM deviation meter to the antenna connector through the attenuator.	0.7kHz

SOFTWARE ADJUSTMENT – continued

Select an operating using [] / [] keys, then set specified value using [] / [] keys on the computer keyboard.

ADJUSTMENT	ADJUSTMENT CONDITION	MEASUREMENT		VALUE
		UNIT	LOCATION	
RX SENSITIVITY [BPF T1]- [BPF T4]	Operating frequency: 450.000MHz Connect a standard signal generator to the antenna connector and set as: Frequency 450.000MHz Level +20dBu Modulation 1kHz Deviation 3.5kHz Receiving	Top panel	Connect a SINAD meter with an 8 load to OPC -966 SP port	Minimum distortion level
	CONVENIENT: The BPF T1 - BPFt4 can be adjusted automatically. 1.Set the cursor to 'BPF ALL' on the adjustment program and then push [ENTER] key 2.The connected PC turns BPF T1 - BPF T4 to peak levels. or 1.Set the cursor to one of BPF T1,T2,T3, or,T4 as desired. 2.Push [ENTER] key to start tuning. 3.Repeat 1 to 2 perform additional BPF tuning.			
SQUELCH LEVEL	Operating frequency: 450.000MHz Connect a standard signal generator to the antenna connector and set as: Frequency 450.000MHz Level OFF Modulation 1kHz Deviation 3.5kHz Receiving	Top panel	Connect a SINAD meter with an 8 load to OPC -966 SP port	12dB SINAD
	Receiving			At the point where the audio signals just appears.