

XXXXXXXXXXXX
XXXXXXXXXXXX



D196A2

2092FA
2496

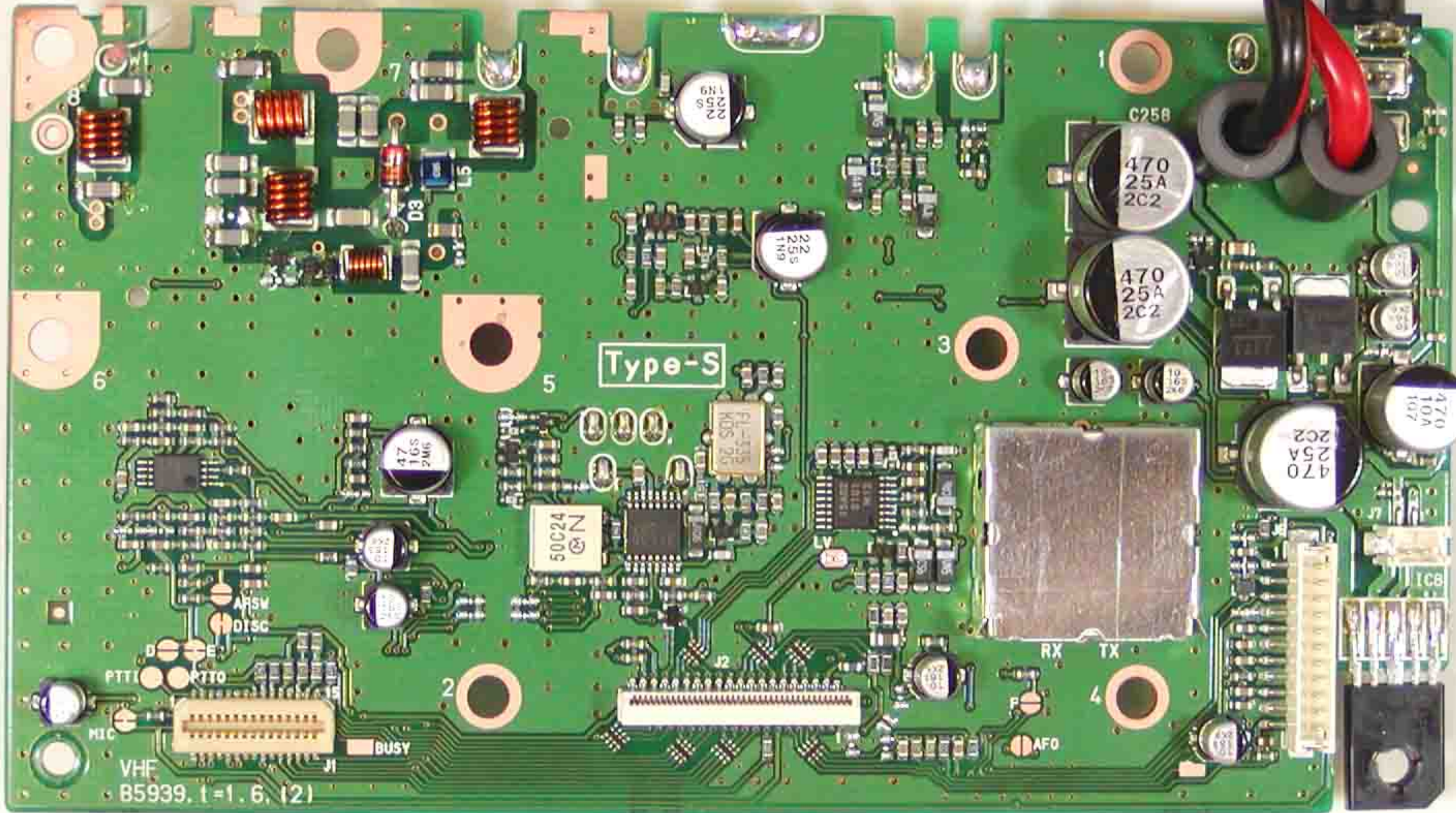
9106

PTT0

PTT1



B5872C



Type-S

50C24
© N

FL-533
KDS 25

C258
470
25A
2C2

470
25A
2C2

470
25A
2C2

470
10A
107

47
16S
2M6

47
16S
2M6

47
16S
2M6

47
16S
2M6

J2

J1

VHF
B5939. 1=1. 6. (2)

BUSY

RX TX

AFO

ARSM

DTSC

PTT1 PTT0

MIC

IC8

8

7

5

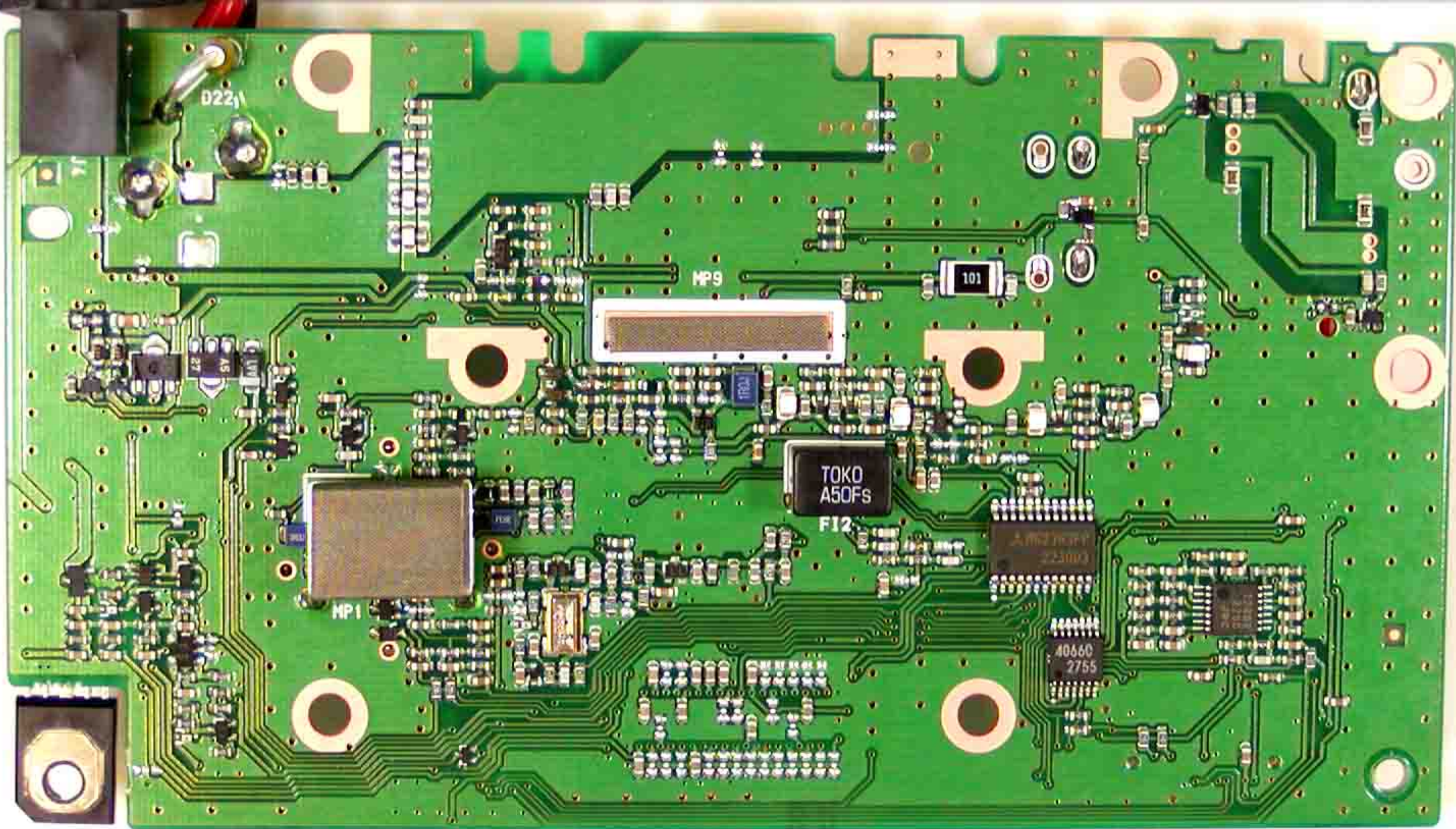
3

1

6

2

4



D221

MP9

101

TOKO
A50Fs
F12

MP1

40660
2755