

APPENDIX 3

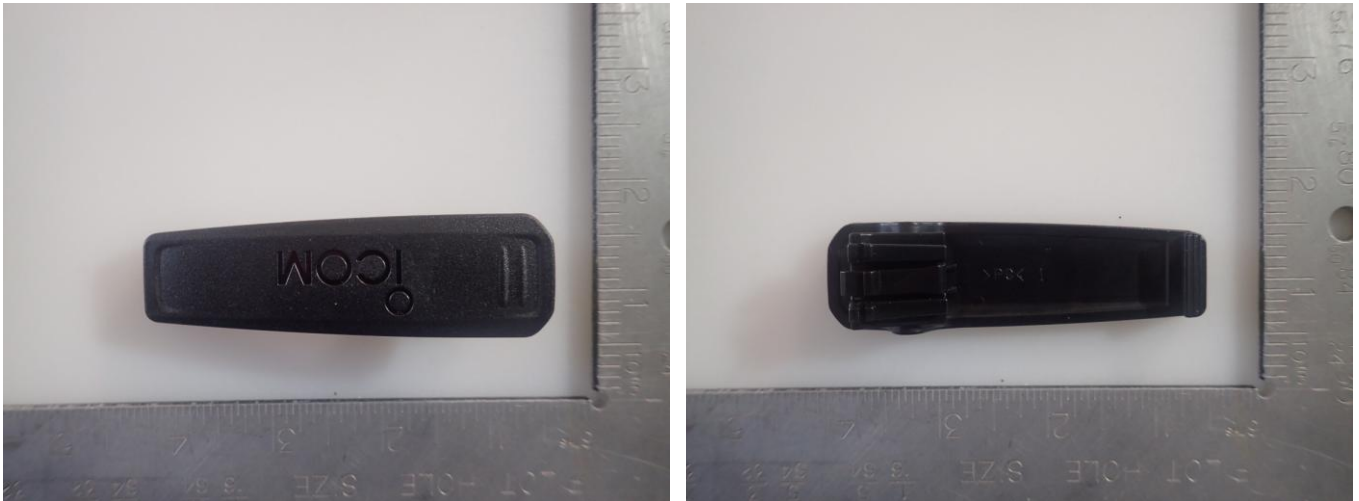
Body Worn Accessories

TABLE OF CONTENTS

EXHIBIT 1. BODY WORN ACCESORIES	3
BELT-CLIP (M/N: MBB-3)	3
BELT-CLIP (M/N: MB-136)	3
BELT-HANGER (M/N: MB-96N)	4
BELT-HANGER (M/N: MB-96F)	4
BELT-HANGER (M/N: MB-96FL)	5
SPEAKER MICROPHONE (M/N: HM-222)	5
SPEAKER MICROPHONE (M/N: HM-222H)	6
GPS SPEAKER MICROPHONE (M/N: HM-233GP)	6
TIEPIN TYPE MICROPHONE (M/N: HM-163MC)	7
EARPHONE (M/N: EH-15B)	7
TUBE EARPHONE (M/N: SP-26)	8
TUBE EARPHONE (M/N: SP-27)	8
EAR HOOK TYPE EARPHONE (M/N: SP-28)	9
EAR HOOK TYPE EARPHONE (M/N: SP-29)	9
TUBE TYPE EARPHONE ADAPTER (M/N: SP-32)	10
EARPHONE (M/N: SP-40)	10
EARPHONE ADAPTER (AD-135) & ACC ADAPTER (AD-118)	11
LEATHER CASE (M/N: LC-190)	11
LEATHER CASE (M/N: LC-187, LC-188)	12
HEADSET EAR-HOOK TYPE (M/N: HS-94)	12
HEADSET NECK-ARM TYPE (M/N: HS-95)	13
HEADSET THROAT MICROPHONE (M/N: HS-97)	13
VS-5MC PTT SWITCH CABLE	14
LI-ION CHARGEABLE BATTERIES (M/N: BP-290 & BP-294)	14
ANTENNAS	15
VS-3 BLUETOOTH HEADSET	15
BATTERY CASE FOR AA ALKALINE BATTERIES (M/N: BP-291)	16

EXHIBIT 1. BODY WORN ACCESORIES

BELT-CLIP (M/N: MBB-3)



< MBB-3 Belt-clip >

BELT-CLIP (M/N: MB-136)



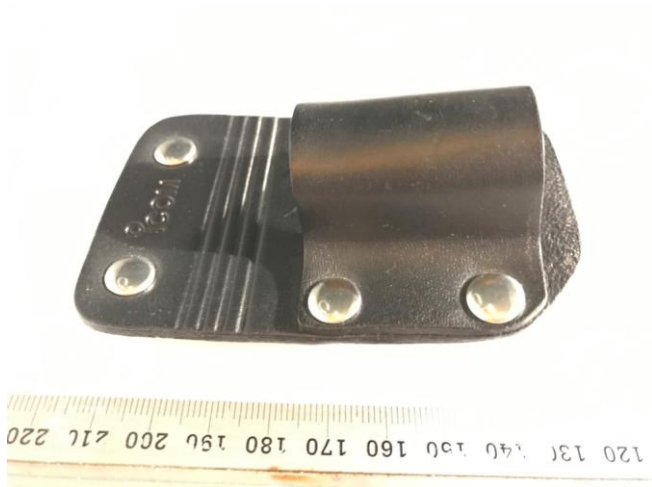
< MB-136 Belt-clip >

BELT-HANGER (M/N: MB-96N)



< MB-96N Belt-Hanger >

BELT-HANGER (M/N: MB-96F)



< MB-96F Belt-hanger >

BELT-HANGER (M/N: MB-96FL)



<MB-96FL Belt-hanger >

SPEAKER MICROPHONE (M/N: HM-222)



< HM-222 Speaker-Microphone >

SPEAKER MICROPHONE (M/N: HM-222H)



< HM-222H Speaker-Microphone >

GPS SPEAKER MICROPHONE (M/N: HM-233GP)



< HM-233GP GPS Speaker-Microphone >

TIEPIN TYPE MICROPHONE (M/N: HM-163MC)



< HM-163MC Tiepin Type-Microphone >

EARPHONE (M/N: EH-15B)



< EH-15B Earphone >

TUBE EARPHONE (M/N: SP-26)



< SP-26 Tube Earphone >

TUBE EARPHONE (M/N: SP-27)



< SP-27 Tube Earphone >

EAR HOOK TYPE EARPHONE (M/N: SP-28)



< SP-28 Ear Hook Type Earphone >

EAR HOOK TYPE EARPHONE (M/N: SP-29)



< SP-29 Ear Hook Type Earphone >

TUBE TYPE EARPHONE ADAPTER (M/N: SP-32)



< SP-32 Tube Type Earphone Adapter >

EARPHONE (M/N: SP-40)



< SP-40 Earphone >

EARPHONE ADAPTER (AD-135) & ACC ADAPTER (AD-118)



< AD-135 Earphone Adapter & AD-118 ACC Adapter >

LEATHER CASE (M/N: LC-190)



< LC-190 Leather case >

LEATHER CASE (M/N: LC-187, LC-188)



< LC-187 & LC-188 Leather case >

HEADSET EAR-HOOK TYPE (M/N: HS-94)



< HS-94 Headset >

HEADSET NECK-ARM TYPE (M/N: HS-95)



< HS-95 Headset >

HEADSET THROAT MICROPHONE (M/N: HS-97)



< HS-97 Headset >

VS-5MC PTT SWITCH CABLE



< VS-5MC PTT Switch Cable >

LI-ION CHARGEABLE BATTERIES (M/N: BP-290 & BP-294)



< Li-ion Batteries >

ANTENNAS



<FA-SC25V_FA-SC26VS_FASC27VS_FA-SC28V_FA-SC29V_FA-SC56VS_FA-SC57VS_FA-SC62V_FA-SC63V_FA-SC61VC Antenna >

VS-3 BLUETOOTH HEADSET



< VS-3 Bluetooth Headset >

BATTERY CASE FOR AA ALKALINE BATTERIES (M/N: BP-291)



< Battery case BP-291 >



< Battery case BP-291 >