

APPENDIX 3

Body Worn Accessories

TABLE OF CONTENTS

EXHIBIT 1. BODY WORN ACCESORIES	3
BELT-CLIP (M/N: MB-133)	3
BELT-CLIP (M/N: MB-136)	3
SPEAKER MICROPHONE (M/N: HM-222)	4
SPEAKER MICROPHONE (M/N: HM-222H)	4
LEATHER CASE (M/N: LC-184).....	5
LEATHER BELT HANGERS (N/N: MB-96N, MB-96F, MB-96FL)	6
HEADSETS (M/N: HS-94, HS-95, HS-97, VS-3)	7
CABLES (M/N: OPC-2362, VS-4MC).....	8
EARPHONES (M/N: SP-28, SP-29, SP-40, EH-15B)	8
BATTERY CASE FOR AA ALKALINE BATTERIES (M/N: BP-305).....	9

EXHIBIT 1. BODY WORN ACCESORIES

BELT-CLIP (M/N: MB-133)



< MB-133 Belt-clip >

BELT-CLIP (M/N: MB-136)



< MB-136 Belt-clip >

SPEAKER MICROPHONE (M/N: HM-222)



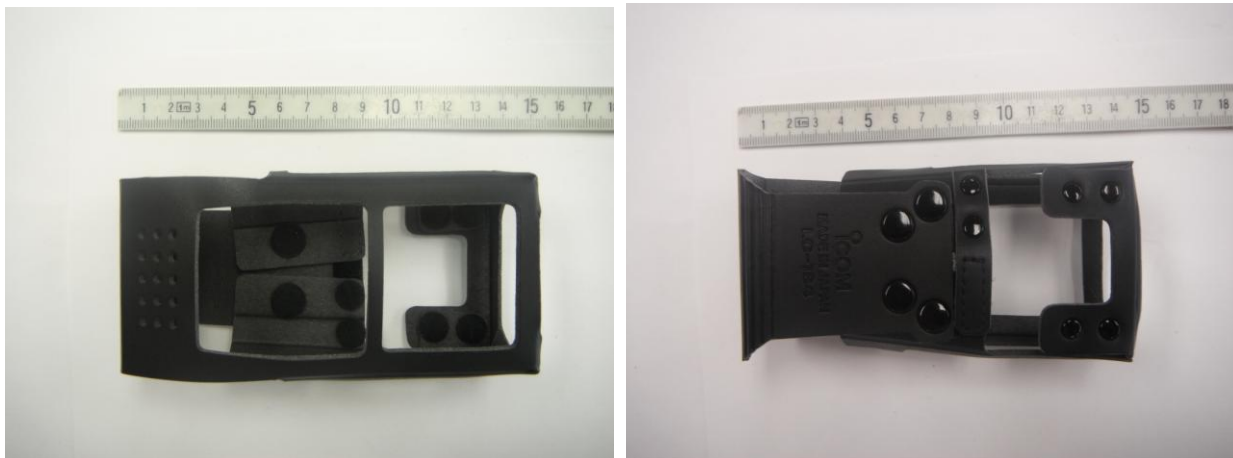
< HM-222 Speaker-Microphone >

SPEAKER MICROPHONE (M/N: HM-222H)



< HM-222H Speaker-Microphone >

LEATHER CASE (M/N: LC-184)



< LC-184 Leather case >

LEATHER BELT HANGERS (N/N: MB-96N, MB-96F, MB-96FL)



MB-96N



MB-96F
< Leather Belt Hangers >



MB-96FL

HEADSETS (M/N: HS-94, HS-95, HS-97, VS-3)



HS-94



HS-95
< Headsets >



HS-97



HS-95
<Bluetooth headset >

CABLES (M/N: OPC-2362, VS-4MC)



VS-4MC
<PTT Switch Cable>



OPC-2362
<HH/Mob cable>

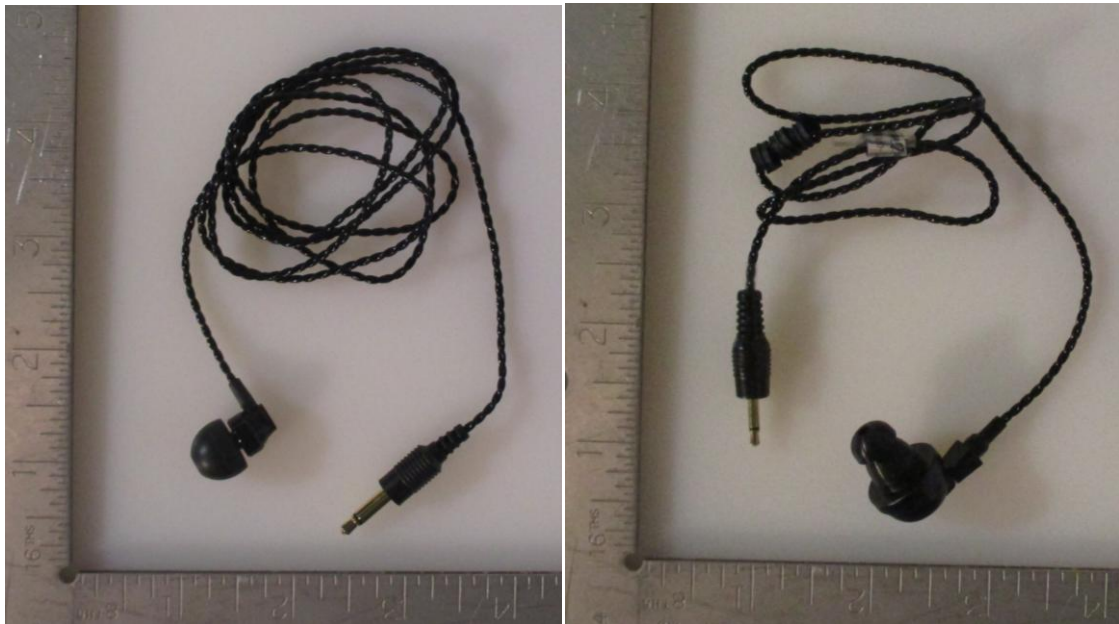
EARPHONES (M/N: SP-28, SP-29, SP-40, EH-15B)



SP-28



SP-29



SP-40

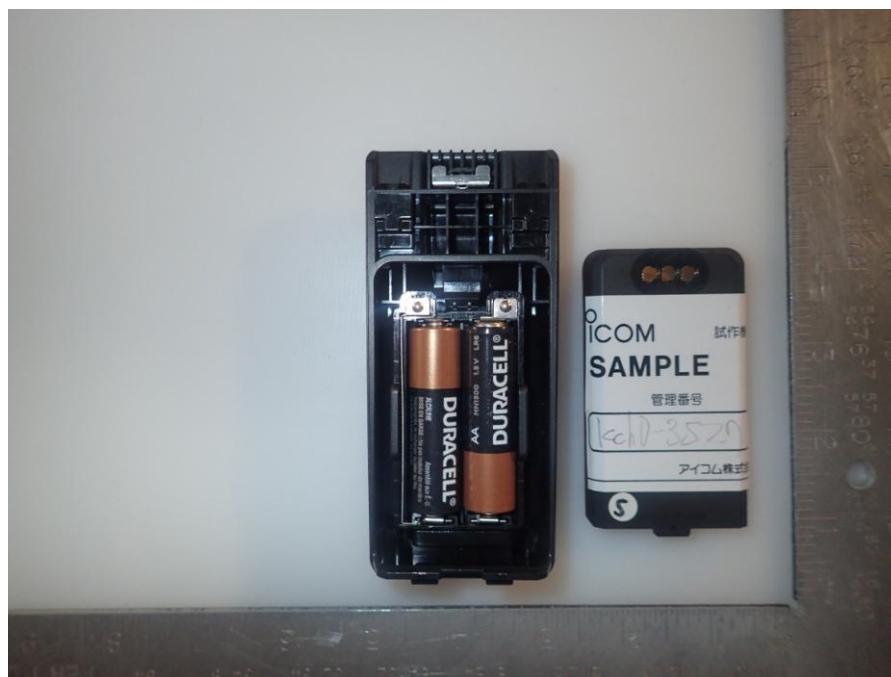
EH-15B

<Earphone>

BATTERY CASE FOR AA ALKALINE BATTERIES (M/N: BP-305)



< Battery case BP-305 >



< Battery case BP-305 >