

APPENDIX 3

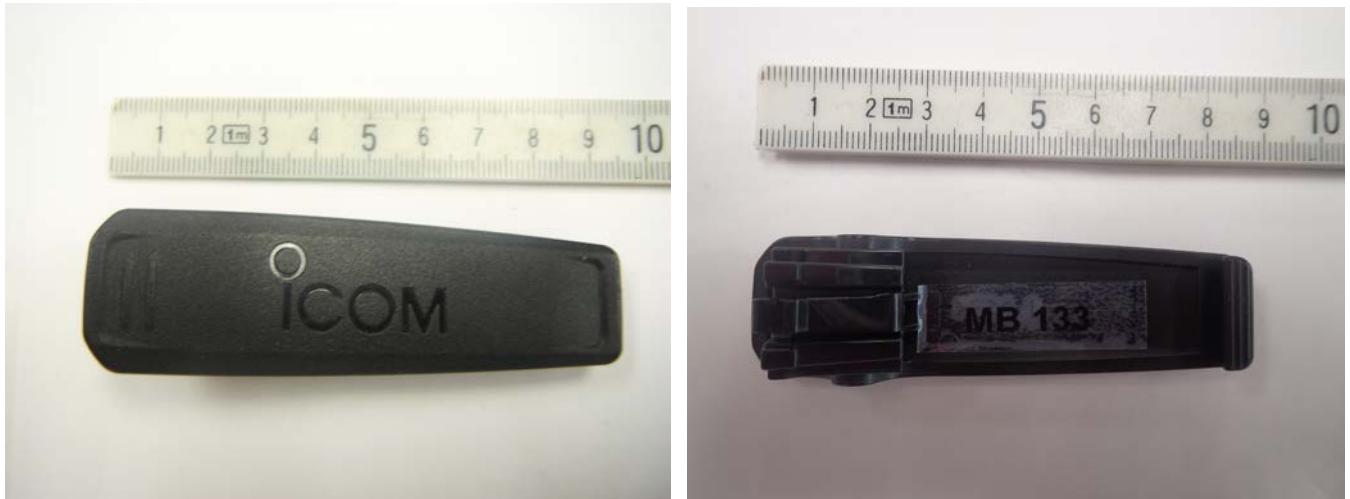
Body Worn Accessories

TABLE OF CONTENTS

EXHIBIT 1. BODY WORN ACCESORIES	3
BELT-CLIP (M/N: MB-133)	3
BELT-CLIP (M/N: MB-136)	3
SPEAKER MICROPHONE (M/N: HM-222)	4
LEATHER CASE (M/N: LC-184).....	4
LEATHER BELT HANGERS (N/N: MB-96N, MB-96F, MB-96FL)	5
BLUE TOOTH HEADSET (M/N: VS-3)	5
HEADSETS (M/N: HS-94, HS-95, HS-97)	6

EXHIBIT 1. BODY WORN ACCESORIES

BELT-CLIP (M/N: MB-133)



< MB-133 Belt-clip >

BELT-CLIP (M/N: MB-136)



< MB-136 Belt-clip >

SPEAKER MICROPHONE (M/N: HM-222)



< HM-222 Speaker-Microphone >

LEATHER CASE (M/N: LC-184)



< LC-184 Leather case >

LEATHER BELT HANGERS (N/N: MB-96N, MB-96F, MB-96FL)



MB-96N



MB-96F
< Leather Belt Hangers >



MB-96FL

BLUE TOOTH HEADSET (M/N: VS-3)



< VS-3 Blue Tooth Headset >

HEADSETS (M/N: HS-94, HS-95, HS-97)



HS-94



HS-95
< Headsets >



HS-97



VS-4MC
<Switch Adapter for Headsets>