

APPENDIX 3

Body Worn Accessories

TABLE OF CONTENTS

| | |
|---|----------|
| EXHIBIT 1. BODY WORN ACCESORIES | 3 |
| SPEAKER-MICROPHONE (M/N: HM-158LA)..... | 3 |
| SPEAKER-MICROPHONE (M/N: HM-159LA)..... | 4 |
| SPEAKER-MICROPHONE (M/N: HM-168LWP)..... | 5 |
| SPEAKER-MICROPHONE (M/N: HM-171GPW) | 6 |
| EARPHONE MICORPHONE (M/N: HM-153LA) | 7 |
| EARPHONE-MICROPHONE (M/N: HM-166LA) | 8 |
| BELT-CLIP (M/N: MB-133)..... | 9 |
| HEADSET (M/N: HS-94LWP)..... | 10 |
| HEADSET (M/N: HS-94) | 11 |
| HEADSET (M/N: HS-95LWP)..... | 12 |
| HEADSET (M/N: HS-95) | 13 |
| HEADSET (M/N: HS-97) | 14 |
| HEADSET PTT SWITCH CABLE (M/N: VS-4LA)..... | 15 |
| HEADSET ADAPTER CABLE (M/N: OPC-2004LA) | 16 |

EXHIBIT 1. BODY WORN ACCESORIES

SPEAKER-MICROPHONE (M/N: HM-158LA)



< HM-158LA Speaker-Microphone >

SPEAKER-MICROPHONE (M/N: HM-159LA)



< HM-159LA Speaker Microphone >

SPEAKER-MICROPHONE (M/N: HM-168LWP)



< HM-168LWP Speaker-microphone >

SPEAKER-MICROPHONE (M/N: HM-171GPW)



EARPHONE MICORPHONE (M/N: HM-153LA)



< HM-153LA Speaker Microphone >

EARPHONE-MICROPHONE (M/N: HM-166LA)



<HM-166LA Earphone Microphone>

BELT-CLIP (M/N: MB-133)



< MB-133 Belt-clip >

HEADSET (M/N: HS-94LWP)



<HS-94LWP Ear hook Headset + Plug Adapter Cable>

HEADSET (M/N: HS-94)



<HS-94 Ear hook Headset + Plug Adapter Cable>

HEADSET (M/N: HS-95LWP)



<HS-95LWP Neck Arm Headset + Plug Adapter Cable>

HEADSET (M/N: HS-95)



<HS-95 Neck Arm Headset + Plug Adapter Cable>

HEADSET (M/N: HS-97)



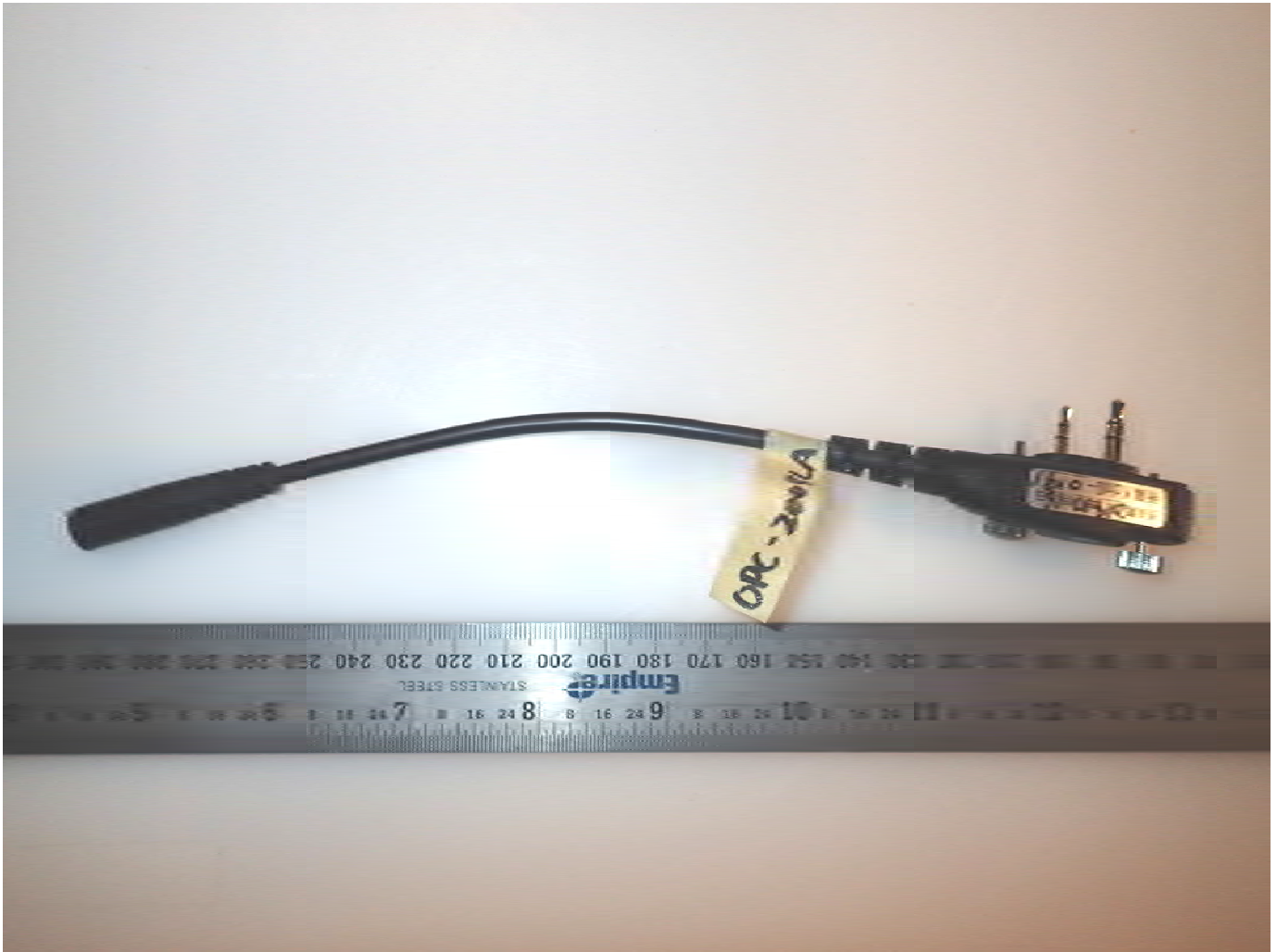
<HS-97 Throat Microphone + Plug Adapter Cable>

HEADSET PTT SWITCH CABLE (M/N: VS-4LA)



<VS-4LA PTT Switch Cable>

HEADSET ADAPTER CABLE (M/N: OPC-2004LA)



<OPC-2004LA Headset Adapter Cable>