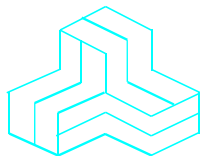


# ENGINEERING TEST REPORT



**UHF Transceivers**  
**Model No.: IC-F2000T**  
**FCC ID: AFJ362102**

**Tested For**  
**ICOM Incorporated**  
**1-1-32, Kamiminami, Hirano-ku**  
**Osaka, Japan, 547-0003**

In accordance with  
**SAR (Specific Absorption Rate) Requirements using guidelines established in**  
**IEEE C95.1-1992, FCC OET Bulletin 65 (Supplement C), FCC 47CFR Part 2.1093**  
**and Industry Canada RSS-102 (Issue 4)**

**UltraTech's File No.: ICOM-383Q-SAR**

This Test report is Issued under the Authority of  
Tri M. Luu, BASc,  
Vice President of Engineering  
UltraTech Group of Labs

Date: Dec 1, 2014

Report Prepared by:  
Maxavier Kee  
Issued Date:  
Dec 1, 2014

Tested by:  
Maxavier Kee  
Test Dates:  
Nov 1~18, 2014

*The results in this Test Report apply only to the sample(s) tested, which has been randomly selected.*

## UltraTech Group of Labs

3000 Bristol Circle, Oakville, Ontario, Canada, L6H 6G4  
Tel.: (905) 829-1570 Fax.: (905) 829-8050

Website: [www.ultratech-labs.com](http://www.ultratech-labs.com), Email: [vic@ultratech-labs.com](mailto:vic@ultratech-labs.com), Email: [tri@ultratech-labs.com](mailto:tri@ultratech-labs.com)



91038



1309



46390-2049



NVLAP LAB  
CODE 200093-0



SL2-IN-E-1119R



CA2049



TL363\_B



TPTDP  
DA1300

## TABLE OF CONTENTS

<b>EXHIBIT 1. INTRODUCTION .....</b>	<b>1</b>
1.1. SCOPE.....	1
1.2. REVISION HISTORY .....	1
1.3. REFERENCES .....	2
<b>EXHIBIT 2. PERFORMANCE ASSESSMENT.....</b>	<b>3</b>
2.1. CLIENT AND MANUFACTURER INFORMATION .....	3
2.2. DEVICE UNDER TEST (D.U.T.) DESCRIPTION .....	4
2.2.1. Photograph of D.U.T.....	5
2.3. LIST OF D.U.T.'S ACCESSORIES: .....	7
2.3.1. Li-ion Chargeable Battery (M/N: BP-278, BP-279, BP-280).....	7
2.4. SPECIFIC OPERATING AND TEST CONDITIONS .....	11
Channel Frequencies selected for test per IEEE Std. 1528:2013 Section6.3.5\.....	11
<b>EXHIBIT 3. SUMMARY OF TEST RESULTS .....</b>	<b>12</b>
3.1. LOCATION OF TESTS .....	12
3.2. APPLICABILITY & SUMMARY OF SAR RESULTS .....	12
3.2.1. Reported SAR for HEAD (scaled for duty cycle and tune-up tolerances).....	13
3.2.2. Reported SAR for Body (scaled for duty cycle and tune-up tolerances) .....	14
<b>EXHIBIT 4. SAR SYSTEM CONFIGURATION .....</b>	<b>15</b>
4.1. DASY5 SYSTEM OVERVIEW.....	15
4.1.1. DASY5 System Specification.....	15
4.1.2. DASY5 SAR SYSTEM block diagram.....	18
4.2. SAR TEST PHANTOMS.....	19
4.2.1. SAM Twin Phantom .....	19
4.2.2. ELI 4.0 Phantom.....	19
<b>EXHIBIT 5. SAR DATA ACQUISITION METHODOLOGY .....</b>	<b>20</b>
5.1. SAR MEASUREMENT PROCEDURE.....	20
5.1.1. Interpolation, Extrapolation and Detection of Maxima.....	22
5.1.2. Averaging and Determination of Spatial Peak SAR .....	23
5.1.3. Evaluation Errors .....	23
<b>EXHIBIT 6. MEASUREMENTS, EXAMINATIONS &amp; TEST DATA.....</b>	<b>25</b>
6.1. TEST CONFIGURATIONS .....	25
6.1.1. UHF Narrow Band 435-470MHz .....	25
6.2. GENERAL TEST SETUP .....	26
6.2.1. Equipment Configuration.....	26
6.2.2. Exercising Equipment.....	26
6.3. PHOTOGRAPHS OF TISSUE DEPTH.....	27
6.3.1. Head Configuration for in front of face Position – 25mm .....	28
6.3.2. Body Configuration for BP-278 Battery Pack(Thinnest).....	30
6.3.3. Body Configuration for BP-279 Battery Pack .....	32
6.3.4. Body Configuration for BP-280 Battery Pack(Fattest).....	34
<b>EXHIBIT 7. SAR MEASUREMENT SYSTEM VERIFICATION .....</b>	<b>36</b>
7.1. STANDARD SOURCE.....	36
7.2. STANDARD SOURCE INPUT POWER MEASUREMENT .....	37

### ULTRATECH GROUP OF LABS

3000 Bristol Circle, Oakville, Ontario, Canada L6H 6G4  
Tel. #: 905-829-1570, Fax. #: 905-829-8050, Email: [vic@ultratech-labs.com](mailto:vic@ultratech-labs.com), Website: <http://www.ultratech-labs.com>

File #: ICOM-383Q-SAR  
Dec 1, 2014

- All test results contained in this engineering test report are traceable to National Institute of Standards and Technology (NIST)

7.3.	SYSTEM VALIDATION PROCEDURE .....	37
7.4.	VERIFICATION RESULTS .....	38
7.4.1.	<i>Dipole D450V3 – SN:1003 Reference SAR values*</i> .....	38
7.4.2.	<i>Verification at 450 MHz Head</i> .....	39
7.4.3.	<i>Verification at 450 MHz Body</i> .....	41
<b>EXHIBIT 8.</b>	<b>D.U.T. POWER MEASUREMENT .....</b>	<b>43</b>
8.1.1.	<i>RF Conducted output power measurement</i> .....	44
<b>EXHIBIT 9.</b>	<b>TISSUE DIELECTRIC PARAMETER CALIBRATION .....</b>	<b>45</b>
9.1.	SIMULATED TISSUE .....	45
9.2.	MEASUREMENT OF ELECTRICAL CHARACTERISTICS OF SIMULATED TISSUE .....	46
9.2.1.	<i>Equipment set-up</i> .....	46
9.2.2.	<i>Measurement procedure</i> .....	47
9.3.	SIMULATED TISSUE MEASUREMENT RESULTS .....	48
9.3.1.	<i>450 MHz Tissue</i> .....	48
<b>EXHIBIT 10.</b>	<b>SAR MEASUREMENT UNCERTAINTY .....</b>	<b>49</b>
10.1.	MEASUREMENT UNCERTAINTY EVALUATION FOR SAR TEST .....	49
<b>EXHIBIT 11.</b>	<b>ADDITIONAL TEST INSTRUMENTS LIST .....</b>	<b>50</b>
<b>EXHIBIT 12.</b>	<b>SAR MEASUREMENT DATA .....</b>	<b>50</b>
<b>EXHIBIT 13.</b>	<b>SPEAG DASY 5.2 CALIBRATION CERTIFICATES .....</b>	<b>50</b>
<b>EXHIBIT 14.</b>	<b>BODY WORN ACCESSORIES .....</b>	<b>50</b>

---

**ULTRATECH GROUP OF LABS**

3000 Bristol Circle, Oakville, Ontario, Canada L6H 6G4  
Tel. #: 905-829-1570, Fax. #: 905-829-8050, Email: [vic@ultratech-labs.com](mailto:vic@ultratech-labs.com), Website: <http://www.ultratech-labs.com>

**File #: ICOM-383Q-SAR**  
Dec 1, 2014

- All test results contained in this engineering test report are traceable to National Institute of Standards and Technology (NIST)

## **EXHIBIT 1. INTRODUCTION**

### **1.1. SCOPE**

<b>Reference:</b>	SAR (Specific Absorption Rate) Requirements IEEE C95.1-2005, FCC OET Bulletin 65 (Supplement C Edition 01-01), FCC 47CFR Part 2.1093 Industry Canada RSS-102 (Issue 4).
<b>Title</b>	Safety Levels with respect to human exposure to Radio Frequency Electromagnetic Fields Guideline for Evaluating the Environmental Effects of Radio Frequency Radiation
<b>Purpose of Test:</b>	To verify compliance with Federal regulated SAR requirements in Canada and the US.
<b>Method of Measurements:</b>	IEEE C95.1-2005, FCC OET Bulletin 65 (Supplement C Edition 01-01) and Industry Canada RSS-102 (Issue 4)
<b>Device Category</b>	Portable
<b>Exposure Category</b>	Occupational/Controlled

### **1.2. REVISION HISTORY**

<b>Document</b>	<b>Issue Date</b>	<b>Description</b>
ICOM-383Q-SAR	Dec 1, 2014	Original

---

#### **ULTRATECH GROUP OF LABS**

3000 Bristol Circle, Oakville, Ontario, Canada L6H 6G4  
Tel. #: 905-829-1570, Fax. #: 905-829-8050, Email: [vic@ultratech-labs.com](mailto:vic@ultratech-labs.com), Website: <http://www.ultratech-labs.com>

**File #: ICOM-383Q-SAR**  
Dec 1, 2014

- All test results contained in this engineering test report are traceable to National Institute of Standards and Technology (NIST)

### 1.3. REFERENCES

The methods and procedures used for the measurements contained in this report are details in the following reference standards:

Publications	Year	Title
IEEE Std. 1528	2013	Draft Recommended practice for determining the Peak Spatial-Average Specific Absorption rate (SAR) in the Human Body Due to Wireless Communications Devices: Experimental Techniques.
Industry Canada RSS-102	2010	“Evaluation Procedure for Mobile and Portable Radio Transmitters with respect to Health Canada’s Safety Code 6 for Exposure of Humans to Radio Frequency Fields”
NCRP Report No.86	1986	“Biological Effects and Exposure Criteria for radio Frequency Electromagnetic Fields”
FCC OET Bulletin 65	2001	“Evaluating Compliance with FCC Guidelines for Human Exposure to radio Frequency Fields”
ANSI/IEEE C95.3	2002	“Recommended Practice for the Measurement of Potentially Hazardous Electromagnetic Fields - RF and Microwave”
ANSI/IEEE C95.1	2005	“Safety Levels with Respect to Human Exposure to Radio Frequency Electromagnetic Fields, 3kHz to 300GHz”
ARPANSA	2002	RADIATION PROTECTION STANDARD Maximum Exposure Levels to Radiofrequency Fields — 3 kHz to 300 GHz Radiation Protection Series Publication No. 3
EN 50566	2013	Product standard to demonstrate compliance of radio frequency fields from handheld and body-mounted wireless communication devices used by the general public (30 MHz - 6 GHz)
EN 62479	2010	Assessment of the compliance of low power electronic and electrical equipment with the basic restrictions related to human exposure to electromagnetic fields (10 MHz to 300 GHz)
IEC 62209-2	2010	Human exposure to radio frequency fields from hand-held and body-mounted wireless communication devices – Human models, instrumentation, and procedures – Part 2: Procedure to determine the specific absorption rate (SAR) for wireless communication devices used in close proximity to the human body (frequency range of 30 MHz to 6 GHz)
FCC KDB	2014	865664 D01 SAR Measurement 100 MHz to 6 GHz v01r03 643646 D01 SAR Test for PTT Radios v01r01 648474 D04 Handset SAR v01r02 447498 D01 General RF Exposure Guidance v05r02 388624 D01 Permit But Ask Procedure v10 388624 D02 Permit But Ask List v15r02 865664 D02 RF Exposure Reporting v01r01 690783 D01 SAR Listings on Grants v01r0
Health Canada’s Safety Code 6	2009	Limits of Human Exposure to Radiofrequency Electromagnetic Energy in the Frequency Range from 3 kHz to 300 GHz

#### ULTRATECH GROUP OF LABS

3000 Bristol Circle, Oakville, Ontario, Canada L6H 6G4  
Tel. #: 905-829-1570, Fax. #: 905-829-8050, Email: [vic@ultratech-labs.com](mailto:vic@ultratech-labs.com), Website: <http://www.ultratech-labs.com>

**File #: ICOM-383Q-SAR**  
Dec 1, 2014

- All test results contained in this engineering test report are traceable to National Institute of Standards and Technology (NIST)

## EXHIBIT 2. PERFORMANCE ASSESSMENT

### 2.1. CLIENT AND MANUFACTURER INFORMATION

APPLICANT	
<b>Name:</b>	Icom Incorporated
<b>Address:</b>	1-1-32, Kamiminami Hirano-ku, Osaka Japan, 547-0003
<b>Contact Person:</b>	Mr. Hideji Fujishima Phone #: +81 6 6793 5302 Fax #: +81 6 6793 0013 Email Address: <a href="mailto:world_support@icom.co.jp">world_support@icom.co.jp</a>

MANUFACTURER	
<b>Name:</b>	Icom Incorporated
<b>Address:</b>	1-1-32, Kamiminami Hirano-ku, Osaka Japan, 547-0003
<b>Contact Person:</b>	Mr. Hideji Fujishima Phone #: +81 6 6793 5302 Fax #: +81 6 6793 0013 Email Address: <a href="mailto:world_support@icom.co.jp">world_support@icom.co.jp</a>

#### ULTRATECH GROUP OF LABS

3000 Bristol Circle, Oakville, Ontario, Canada L6H 6G4  
Tel. #: 905-829-1570, Fax. #: 905-829-8050, Email: [vic@ultratech-labs.com](mailto:vic@ultratech-labs.com), Website: <http://www.ultratech-labs.com>

File #: ICOM-383Q-SAR  
Dec 1, 2014

- All test results contained in this engineering test report are traceable to National Institute of Standards and Technology (NIST)

## 2.2. DEVICE UNDER TEST (D.U.T.) DESCRIPTION

The following is the information provided by the applicant.

<b>Trade Name</b>	Icom Inc.
<b>Type/Model Number</b>	IC-F2000T
<b>Serial Number</b>	00000708-0
<b>Transmitter Frequency Band</b>	Narrow Band: 450-512MHz
<b>Maximum RF Output Power</b>	Narrow Band: 4W, 2W, 1W
<b>Modulation Employed</b>	FM
<b>Antenna</b>	FA-SC57VS 450-470MHz FA-SC72U 470-520MHz FA-SC73US 450-490MHz Cut Antenna FA-SC61UC 380-520MHz
<b>Power Supply/Battery Packs</b>	Rechargeable Li-Ion battery (M/N:BP-278 1130mAh) Rechargeable Li-Ion battery (M/N:BP-279 1485mAh) Rechargeable Li-Ion battery (M/N:BP-280 2280mAh)
<b>Belt Clip</b>	MB-133
<b>DC Cables</b>	CP-23L Cigarette lighter cable OPC-656 DC Power cable OPC-2004LA
<b>Battery Charger</b>	BC-213 Charge Cradle BC-123S Charge Cradle adapter BC-214 Multi-Charge Cradle BC-157S Multi-Charge Cradle adapter
<b>Speaker/Microphone</b>	HM-168LWP HM-158LA HM-153LA HM-166LA VS-4LA PTT switch cable
<b>Headsets</b>	HS-94 Earhook type *HS-94LWP Behind head type HS-95 Behind ear type *HS-95LWP Behind head type HS-97 Throat Type VS-4LA PTT Switch Cable *OPC-2004LA VOX adapter
<b>Primary User Functions of D.U.T.</b>	Transmit and receive data

### ULTRATECH GROUP OF LABS

3000 Bristol Circle, Oakville, Ontario, Canada L6H 6G4  
Tel. #: 905-829-1570, Fax. #: 905-829-8050, Email: [vic@ultratech-labs.com](mailto:vic@ultratech-labs.com), Website: <http://www.ultratech-labs.com>

**File #: ICOM-383Q-SAR**  
Dec 1, 2014

- All test results contained in this engineering test report are traceable to National Institute of Standards and Technology (NIST)

**2.2.1. Photograph of D.U.T**



**< D.U.T.'s front view with battery >**

**ULTRATECH GROUP OF LABS**

3000 Bristol Circle, Oakville, Ontario, Canada L6H 6G4  
Tel. #: 905-829-1570, Fax. #: 905-829-8050, Email: [vic@ultratech-labs.com](mailto:vic@ultratech-labs.com), Website: <http://www.ultratech-labs.com>

**File #: ICOM-383Q-SAR**  
Dec 1, 2014

- All test results contained in this engineering test report are traceable to National Institute of Standards and Technology (NIST)





< D.U.T.'s rear view with battery >

**ULTRATECH GROUP OF LABS**

3000 Bristol Circle, Oakville, Ontario, Canada L6H 6G4  
Tel. #: 905-829-1570, Fax. #: 905-829-8050, Email: [vic@ultratech-labs.com](mailto:vic@ultratech-labs.com), Website: <http://www.ultratech-labs.com>

**File #: ICOM-383Q-SAR**  
Dec 1, 2014

- All test results contained in this engineering test report are traceable to National Institute of Standards and Technology (NIST)

## 2.3. LIST OF D.U.T.'S ACCESSORIES:

### 2.3.1. Li-ion Chargeable Battery (M/N: BP-278, BP-279, BP-280)



< Li-ion Batteries >

## ULTRATECH GROUP OF LABS

3000 Bristol Circle, Oakville, Ontario, Canada L6H 6G4  
Tel. #: 905-829-1570, Fax. #: 905-829-8050, Email: [vic@ultratech-labs.com](mailto:vic@ultratech-labs.com), Website: <http://www.ultratech-labs.com>

File #: ICOM-383Q-SAR  
Dec 1, 2014

- All test results contained in this engineering test report are traceable to National Institute of Standards and Technology (NIST)



< Belt Clip >

---

**ULTRATECH GROUP OF LABS**

3000 Bristol Circle, Oakville, Ontario, Canada L6H 6G4  
Tel. #: 905-829-1570, Fax. #: 905-829-8050, Email: [vic@ultratech-labs.com](mailto:vic@ultratech-labs.com), Website: <http://www.ultratech-labs.com>

**File #: ICOM-383Q-SAR**  
Dec 1, 2014

- All test results contained in this engineering test report are traceable to National Institute of Standards and Technology (NIST)



< Antenna – Blue Tip FA-SC72U 138mm, Red Tip FA-SC57U 140mm, Stubby Red Tip FA-SC73US 60mm >

#### ULTRATECH GROUP OF LABS

3000 Bristol Circle, Oakville, Ontario, Canada L6H 6G4  
Tel. #: 905-829-1570, Fax. #: 905-829-8050, Email: [vic@ultratech-labs.com](mailto:vic@ultratech-labs.com), Website: <http://www.ultratech-labs.com>

File #: ICOM-383Q-SAR  
Dec 1, 2014

- All test results contained in this engineering test report are traceable to National Institute of Standards and Technology (NIST)



< Cut Antenna – FA-SC72FA-SC61UCU 460MHz 144mm, 480MHz 136mm, 500MHz 129mm

**ULTRATECH GROUP OF LABS**

3000 Bristol Circle, Oakville, Ontario, Canada L6H 6G4  
Tel. #: 905-829-1570, Fax. #: 905-829-8050, Email: [vic@ultratech-labs.com](mailto:vic@ultratech-labs.com), Website: <http://www.ultratech-labs.com>

File #: ICOM-383Q-SAR  
Dec 1, 2014

- All test results contained in this engineering test report are traceable to National Institute of Standards and Technology (NIST)

## 2.4. SPECIFIC OPERATING AND TEST CONDITIONS

*Channel Frequencies selected for test per IEEE Std. 1528:2013 Section 6.3.5\*

Antenna Band 450-512 MHz	Frequency			# Test Channels	Test Frequencies (MHz)				
	Low	High	Centre		F1	F2	F3	F4	F5
FA-SC57VS 450-470MHz	450	470	460	3	450	460	470		
FA-SC72U 470-520MHz	470	512	491	3	470	491	512		
FA-SC73US 450-490MHz	450	490	470	3	450	470	490		
FA-SC61UC 380-520MHz	450	512	481	5	450	465.5	481	496.5	512
FA-SC61UC 460MHz 142mm	450	512	460	5	450	460	481	496.5	512
FA-SC61UC 480MHz 136mm	450	512	480	5	450	465.5	480	496.5	512
FA-SC61UC 500MHz 129mm	450	512	500	5	450	465.5	480	500	512

1. Test Channel Reduction may be applied if SAR < 50% SAR limit for Cut Antenna per FCC KDB 133795.
2. Test Reduction may be applied per FCC KDB 643646 D01 SAR Test for PTT Radios v01r01.
3. Head SAR measured with a 25mm separation distance.
4. When multiple standard batteries are supplied with a radio, the battery with the highest capacity is considered the default battery for making Head SAR measurements.
5. For Body worn configurations, the thinnest battery usually provides the least separation distance to the phantom and is considered to provide the highest SAR. Other battery holders may be considered depending on the hot spot location and angling of the antenna feed point.
6. If SAR > 50% SAR limit, then additional batteries may have to be evaluated.
7. SAR scaling to duty factor (50%) and max power of tune-up procedure is required.
8. The IC-F2000T radio device has SWR monitor which shuts off the transmitter when high SWR is detected. This feature cannot be defeated and is part of the radio devices safety feature.

---

### ULTRATECH GROUP OF LABS

3000 Bristol Circle, Oakville, Ontario, Canada L6H 6G4  
Tel. #: 905-829-1570, Fax. #: 905-829-8050, Email: [vic@ultratech-labs.com](mailto:vic@ultratech-labs.com), Website: <http://www.ultratech-labs.com>

File #: ICOM-383Q-SAR  
Dec 1, 2014

- All test results contained in this engineering test report are traceable to National Institute of Standards and Technology (NIST)

## **EXHIBIT 3. SUMMARY OF TEST RESULTS**

### **3.1. LOCATION OF TESTS**

All of the measurements described in this report were performed at UltraTech Group of Labs located at:

3000 Bristol Circle, in the city of Oakville, Province of Ontario, Canada.

All measurements were performed in UltraTech's shielded chamber, 16' x 13' x 8'.

### **3.2. APPLICABILITY & SUMMARY OF SAR RESULTS**

The maximum peak spatial – 1g average SAR measured was found to be 2.4 W/Kg for head configuration and 5.55W/Kg for body configuration with 50% usage-based time-averaging applied for PTT device.

For body configuration tests, all the supplied body-worn accessories were checked through pre-scans and confirmed that those options were not affecting SAR compliance conclusion. Therefore, the final evaluation for body configuration was performed only with M/N: MB-133 Belt Clip, M/N: HM-168L Speaker Microphone and M/N: BP-278, M/N: BP-279 and M/N: BP-280 Li-ion rechargeable battery packs.

---

#### **ULTRATECH GROUP OF LABS**

3000 Bristol Circle, Oakville, Ontario, Canada L6H 6G4  
Tel. #: 905-829-1570, Fax. #: 905-829-8050, Email: [vic@ultratech-labs.com](mailto:vic@ultratech-labs.com), Website: <http://www.ultratech-labs.com>

**File #: ICOM-383Q-SAR**  
Dec 1, 2014

- All test results contained in this engineering test report are traceable to National Institute of Standards and Technology (NIST)



**3.2.1. Reported<sup>1</sup> SAR for HEAD (scaled for duty cycle and tune-up tolerances)**

Antenna	Power (dBm)		CH. Freq	HEAD SAR (W/Kg)		
				BP-279	BP-278	BP-280
			(MHz)	1485mAh	1130mAh	2280mAh
SC57US 450-470MHz Red Tip 140mm	36.23	Ch1	450			
	36.20	CH2	460			
	36.26	CH4	470	2.04	1.96	1.97
SC72U 470-520MHz Blue Tip 138mm	36.26	CH4	470	1.53	1.85	1.98
	36.19	CH7	491			
	36.10	CH10	512			
SC73US 450-490MHz Red Tip 60mm	36.23	CH1	450			
	36.26	CH4	470	2.01	2.24	2.11
	36.19	CH11	490			
Cut Antenna 380-520MHz						
SC61UC 460MHz 142mm White Tip	36.23	CH1	450			
	36.20	CH2	460			
	36.23	CH8	496.5	3.09	2.54	<b>3.14</b>
	36.10	CH10	512			
SC61UC 480MHz 136mm White Tip	36.23	CH1	450			
	36.25	CH3	465.5			
	36.30	CH5	480	2.05	2.40	2.47
	36.10	CH10	512			
SC61UC 500MHz 129mm White Tip	36.23	CH1	450			
	36.25	CH3	465.5	1.53	1.23	1.44
	36.23	CH8	496.5			
	36.10	CH10	512			

<sup>1</sup> Reported SAR is scaled to maximum tune-up RF power and 50% duty cycle

**ULTRATECH GROUP OF LABS**

3000 Bristol Circle, Oakville, Ontario, Canada L6H 6G4  
Tel. #: 905-829-1570, Fax. #: 905-829-8050, Email: [vic@ultratech-labs.com](mailto:vic@ultratech-labs.com), Website: <http://www.ultratech-labs.com>

**File #: ICOM-383Q-SAR**  
Dec 1, 2014

- All test results contained in this engineering test report are traceable to National Institute of Standards and Technology (NIST)



**3.2.2. Reported<sup>2</sup> SAR for Body (scaled for duty cycle and tune-up tolerances)**

Antenna	Power (W)		CH. Freq (MHz)	BODY SAR (W/Kg)		
				BP-279 1485mAh	BP-278 1130mAh	BP-278 1130mAh
SC57US 450-470MHz Red Tip 140mm	36.23	Ch1	450			
	36.20	CH2	460		3.61	
	36.26	CH4	470		3.86	
SC72U 470-520MHz Blue Tip 138mm	36.26	CH4	470	3.26	4.07	3.32
	36.19	CH7	491	5.10	4.93	5.30
	36.10	CH10	512	4.56	4.37	5.20
SC73US 450-490MHz Red Tip 60mm	36.23	CH1	450			
	36.26	CH4	470		2.82	
	36.19	CH11	490			
Cut Antenna 380-520MHz						
SC61UC 460MHz 142mm White Tip	36.23	CH1	450	3.46	3.26	3.51
	36.20	CH2	460	3.48	3.48	3.87
	36.23	CH8	460	3.33	3.35	4.07
	36.10	CH10	512	3.33	3.35	4.07
SC61UC 480MHz 136mm White Tip	36.23	CH1	450	*	2.87	*
	36.25	CH3	465.5		2.81	3.50
	36.30	CH5	480	4.88	4.55	5.20
	36.10	CH10	512	*	3.16	*
SC61UC 500MHz 129mm White Tip	36.23	CH1	450			
	36.25	CH3	465.5	2.64	2.09	2.33
	36.23	CH8	496.5	5.20	4.79	<b>5.55</b>
	36.10	CH10	512	*	3.82	*

\* The Radio would shut off after 2 minutes when placed near phantom and could not be made to transmit longer than 30 seconds thereafter. Consultation with manufacturer revealed that the radio monitors VSWR and shuts off transmitter when reflected power is excessively high. This was observed to only occur at 512MHz with the Cut Antenna.

<sup>2</sup> Reported SAR is scaled to maximum tune-up RF power and 50% duty cycle

## EXHIBIT 4. SAR SYSTEM CONFIGURATION

### 4.1. DASY5 SYSTEM OVERVIEW



#### 4.1.1. DASY5 System Specification

Positioning Equipment	Computer
DASAY5 Measurement Server Data Acquisition Electronics (DAE) Light Beam Unit Device Holder Robot (STAUBLI TX90)	Type: HP Compaq dc7800p Convertible CPU : Intel® Core™ 2 Duo E8500 Memory : 2GB RAM Operating System : Windows XP Professional Monitor : HP L1950g LCD

##### 4.1.1.1. DASY5 Measurement Server

The DASY5 measurement server is based on a PC/104 CPU board with a 400MHz Intel ULV Celeron, 128MB chipdisk and 128MB RAM. The necessary circuits for communication with the DAE4 (or DAE3) electronics box, as well as the 16 bit AD converter system for optical detection and digital I/O interface are contained on the DASY5 I/O board, which is directly connected to the PC/104 bus of the CPU board.

The measurement server performs all real-time data evaluation of field measurements and surface detection, controls robot movements and handles safety operation. The PC operating system cannot interfere with these time critical

#### ULTRATECH GROUP OF LABS

3000 Bristol Circle, Oakville, Ontario, Canada L6H 6G4  
Tel. #: 905-829-1570, Fax. #: 905-829-8050, Email: [vic@ultratech-labs.com](mailto:vic@ultratech-labs.com), Website: <http://www.ultratech-labs.com>

File #: ICOM-383Q-SAR  
Dec 1, 2014

- All test results contained in this engineering test report are traceable to National Institute of Standards and Technology (NIST)

processes. All connections are supervised by a watchdog, and disconnection of any of the cables to the measurement server will automatically disarm the robot and disable all program-controlled robot movements. Furthermore, the measurement server is equipped with an expansion port which is reserved for future applications. Please note that this expansion port does not have a standardized pinout, and therefore only devices provided by SPEAG can be connected. Devices from any other supplier could seriously damage the measurement server.

#### **4.1.1.2. Data Acquisition Electronics**

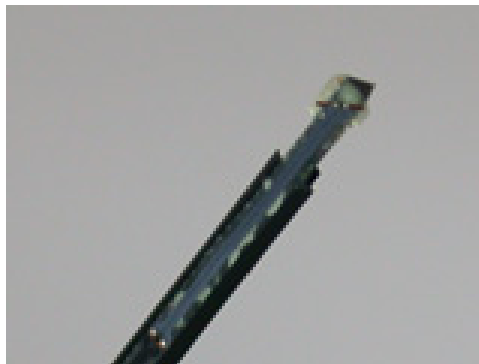
The data acquisition electronics (DAE4 or DAE3) consist of a highly sensitive electrometer-grade preamplifier with auto-zeroing, a channel and gain-switching multiplexer, a fast 16 bit AD-converter and a command decoder with a control logic unit. Transmission to the measurement server is accomplished through an optical downlink for data and status information, as well as an optical uplink for commands and the clock.

The mechanical probe mounting device includes two different sensor systems for frontal and sideways probe contacts. They are used for mechanical surface detection and probe collision detection.

The input impedance of both the DAE4 as well as of the DAE3 box is 200M $\Omega$ ; the inputs are symmetrical and floating. Common mode rejection is above 80 dB.

#### **4.1.1.3. Dosimetric Probes**

These probes are specially designed and calibrated for use in liquids with high permittivity. They should not be used in air, since the spherical isotropy in air is poor (-2 dB). The dosimetric probes have special calibrations in various liquids at different frequencies.



---

#### **ULTRATECH GROUP OF LABS**

3000 Bristol Circle, Oakville, Ontario, Canada L6H 6G4  
Tel. #: 905-829-1570, Fax. #: 905-829-8050, Email: [vic@ultratech-labs.com](mailto:vic@ultratech-labs.com), Website: <http://www.ultratech-labs.com>

**File #: ICOM-383Q-SAR**  
Dec 1, 2014

- All test results contained in this engineering test report are traceable to National Institute of Standards and Technology (NIST)

**4.1.1.3.1. ES3DV3 Isotropic E-Filed Probe**

<b>Construction</b>	Symmetrical design with triangular core Interleaved sensors Built-in shielding against static charges PEEK enclosure material (resistant to organic solvents, e.g., DGBE)
<b>Calibration</b>	Basic Broad Band Calibration in air Conversion Factors (CF) for HSL 900 and HSL 1750 Additional CF for other liquids and frequencies
<b>Frequency</b>	10 MHz to 4 GHz Linearity $\pm 0.2$ dB (30 MHz to 4 GHz)
<b>Directivity</b>	$\pm 0.2$ dB in HSL (rotation around probe axis) $\pm 0.3$ dB in tissue material (rotation normal to probe axis)
<b>Dynamic Range</b>	5 $\mu$ W/g to $> 100$ mW/g Linearity: $\pm 0.2$ dB
<b>Dimensions</b>	Overall length: 330 mm (Tip: 20 mm) Tip diameter: 3.9 mm (Body: 12 mm) Distance from probe tip to dipole centers: 2.0 mm

**4.1.1.3.2. EX3DV4 Isotropic E-Filed Probe**

<b>Construction</b>	Symmetrical design with triangular core Built-in shielding against static charges PEEK enclosure material (resistant to organic solvents, e.g., DGBE)
<b>Calibration</b>	Basic Broad Band Calibration in air Conversion Factors (CF) for HSL 900 and HSL 1750 Additional CF for other liquids and frequencies
<b>Frequency</b>	10 MHz to $> 6$ GHz Linearity: $\pm 0.2$ dB (30 MHz to 6 GHz)
<b>Directivity</b>	$\pm 0.3$ dB in HSL (rotation around probe axis) $\pm 0.5$ dB in tissue material (rotation normal to probe axis)
<b>Dynamic Range</b>	10 $\mu$ W/g to $> 100$ mW/g Linearity: $\pm 0.2$ dB (noise: typically $< 1$ $\mu$ W/g)
<b>Dimensions</b>	Overall length: 330 mm (Tip: 20 mm) Tip diameter: 2.5 mm (Body: 12 mm) Typical distance from probe tip to dipole centers: 1 mm

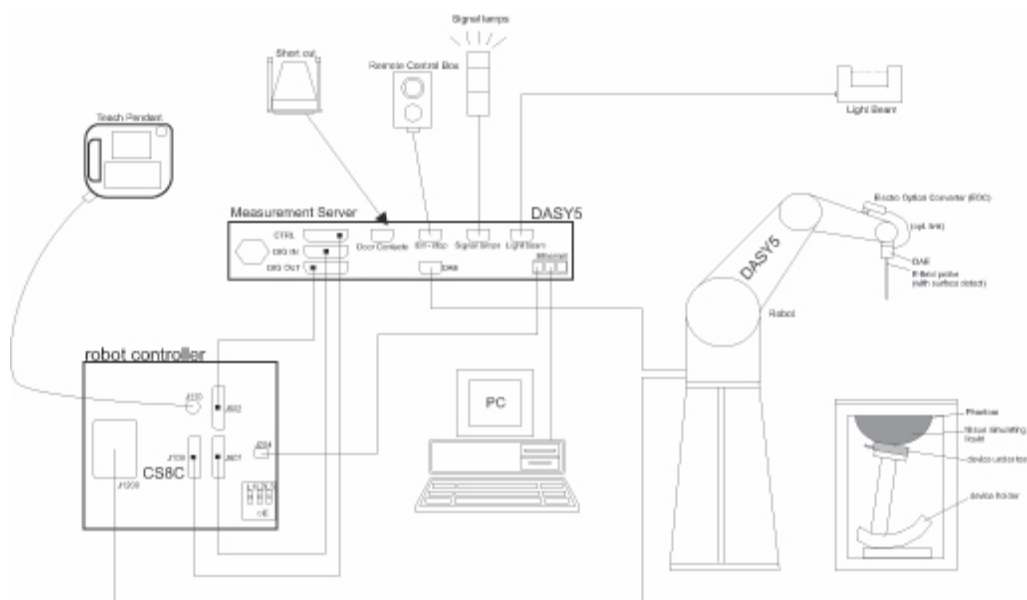
**ULTRATECH GROUP OF LABS**

3000 Bristol Circle, Oakville, Ontario, Canada L6H 6G4  
Tel. #: 905-829-1570, Fax. #: 905-829-8050, Email: [vic@ultratech-labs.com](mailto:vic@ultratech-labs.com), Website: <http://www.ultratech-labs.com>

**File #: ICOM-383Q-SAR**  
Dec 1, 2014

- All test results contained in this engineering test report are traceable to National Institute of Standards and Technology (NIST)

#### 4.1.2. DASY5 SAR SYSTEM block diagram



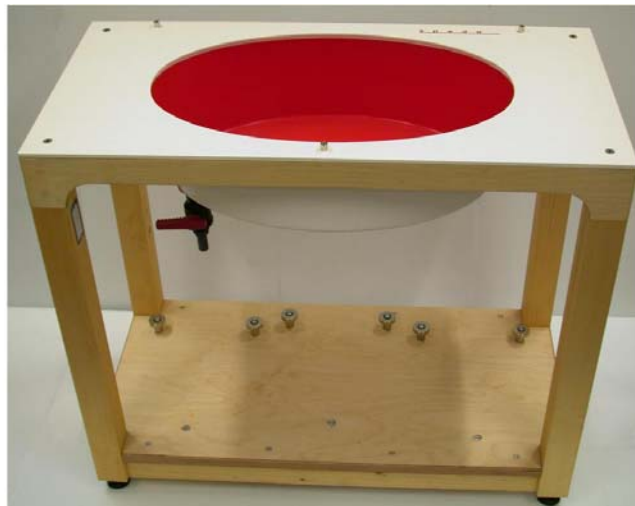
## **4.2. SAR TEST PHANTOMS**

### **4.2.1. SAM Twin Phantom**



For Head mounted devices placed next to the ear, the phantom used in the evaluation of the RF exposure of the user of the wireless device is an IEEE P1528 compliant SAM Twin phantom, shaped like a human head and filled with a mixture simulating the dielectric characteristics of the brain. A left sided head and a right sided head are evaluated to determine the worst case orientation for SAR.

### **4.2.2. ELI 4.0 Phantom**



For body mounted and frontal held push-to-talk devices, an IEC 62209-2 compliant Oval Flat Phantom (ELI 4.0) with a base plate thickness of 2mm is used.

---

## **ULTRATECH GROUP OF LABS**

3000 Bristol Circle, Oakville, Ontario, Canada L6H 6G4  
Tel. #: 905-829-1570, Fax. #: 905-829-8050, Email: [vic@ultratech-labs.com](mailto:vic@ultratech-labs.com), Website: <http://www.ultratech-labs.com>

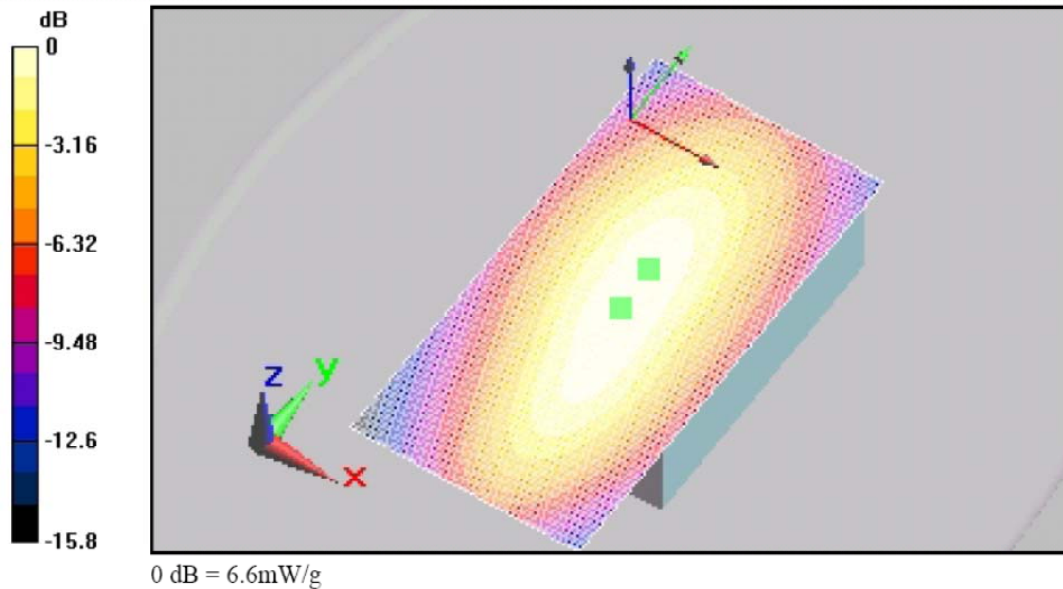
**File #: ICOM-383Q-SAR**  
Dec 1, 2014

- All test results contained in this engineering test report are traceable to National Institute of Standards and Technology (NIST)

## EXHIBIT 5. SAR DATA ACQUISITION METHODOLOGY

### 5.1. SAR MEASUREMENT PROCEDURE

The goal of the measurement process is to scan the phantom over a selected area in order to find the region of highest levels of RF energy and then to obtain a single value for the peak spatial-average of SAR over a volume that would contain one gram (in the shape of a cube) of biological tissue. The test procedure, of course, measures SAR in the simulated tissue.



#### < Area scan >

The software requests the user to move the probe to locations at two extreme corners of a rectangle that encloses the area to be scanned. An arbitrary origin and the spatial resolution for the scan are also specified. Under program control, the scan is performed automatically by the robot-guided probe.

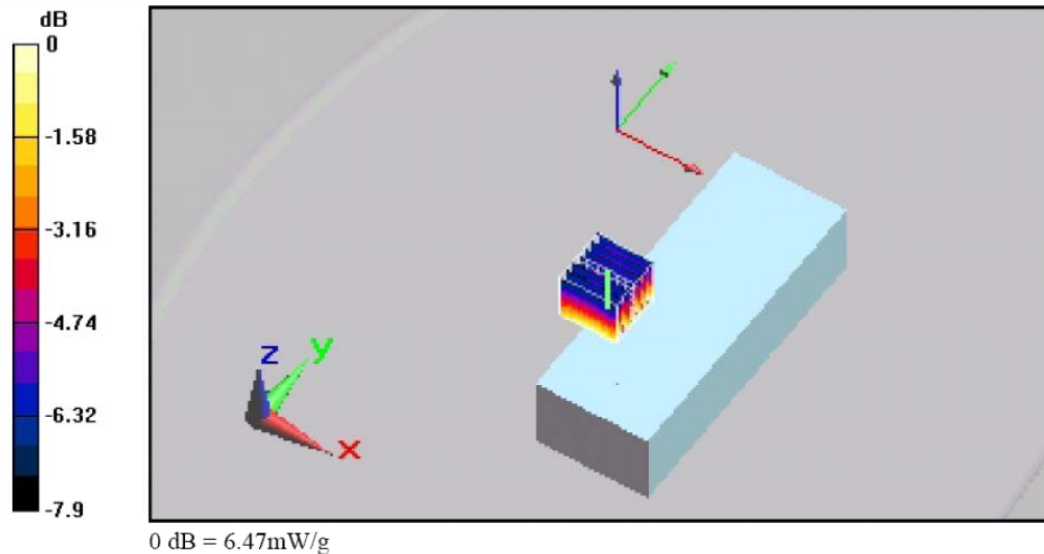
#### ULTRATECH GROUP OF LABS

3000 Bristol Circle, Oakville, Ontario, Canada L6H 6G4  
Tel. #: 905-829-1570, Fax. #: 905-829-8050, Email: [vic@ultratech-labs.com](mailto:vic@ultratech-labs.com), Website: <http://www.ultratech-labs.com>

File #: ICOM-383Q-SAR  
Dec 1, 2014

- All test results contained in this engineering test report are traceable to National Institute of Standards and Technology (NIST)





**< Zoom Scan >**

The DASY5 software includes all numerical procedures necessary to evaluate the spatial peak SAR values.

Based on the Draft: SCC-34, SC-2, WG-2 - Computational Dosimetry, IEEE P1529/D0.0 (Draft Recommended Practice for Determining the Spatial-Peak Specific Absorption Rate (SAR) Associated with the Use of Wireless Handsets - Computational Techniques), a new algorithm has been implemented. The spatial-peak SAR can be computed over any required mass.

The base for the evaluation is a "cube" measurement in a volume of (30mm)<sup>3</sup> (7x7x7 points). The measured volume must include the 1 g and 10 g cubes with the highest averaged SAR values. For that purpose, the center of the measured volume is aligned to the interpolated peak SAR value of a previously performed area scan. If the 10g cube or both cubes are not entirely inside the measured volumes, the system issues a warning regarding the evaluated spatial peak values within the postprocessing engine (SEMCAD X). This means that if the measured volume is shifted, higher values might be possible. To get the correct values you can use a finer measurement grid for the area scan. In complicated field distributions, a large grid spacing for the area scan might miss some details and give an incorrectly interpolated peak location.

The entire evaluation of the spatial peak values is performed within the postprocessing engine (SEMCAD X). The system always gives the maximum values for the 1 g and 10 g cubes. The algorithm to find the cube with highest averaged SAR is divided into the following stages:

1. extraction of the measured data (grid and values) from the Zoom Scan
2. calculation of the SAR value at every measurement point based on all stored data (A/D values and measurement parameters)
3. generation of a high-resolution mesh within the measured volume
4. interpolation of all measured values from the measurement grid to the high-resolution grid
5. extrapolation of the entire 3-D field distribution to the phantom surface over the distance from sensor to surface
6. calculation of the averaged SAR within masses of 1 g and 10 g

**ULTRATECH GROUP OF LABS**

3000 Bristol Circle, Oakville, Ontario, Canada L6H 6G4  
Tel. #: 905-829-1570, Fax. #: 905-829-8050, Email: [vic@ultratech-labs.com](mailto:vic@ultratech-labs.com), Website: <http://www.ultratech-labs.com>

**File #: ICOM-383Q-SAR**  
Dec 1, 2014

- All test results contained in this engineering test report are traceable to National Institute of Standards and Technology (NIST)



The significant parts are outlined in more detail within the following sections.

### **5.1.1. Interpolation, Extrapolation and Detection of Maxima**

The probe is calibrated at the center of the dipole sensors which is located 1 to 2.7mm away from the probe tip. During measurements, the probe stops shortly above the phantom surface, depending on the probe and the surface detecting system. Both distances are included as parameters in the probe configuration file. The software always knows exactly how far away the measured point is from the surface. As the probe cannot directly measure at the surface, the values between the deepest measured point and the surface must be extrapolated.

In DASY5, the choice of the coordinate system defining the location of the measurement points has no influence on the uncertainty of the interpolation, Maxima Search and extrapolation routines. The interpolation, extrapolation and maximum search routines are all based on the modified Quadratic Shepard's method.

Thereby, the interpolation scheme combines a least-square fitted function method and a weighted average method which are the two basic types of computational interpolation and approximation. The DASY5 routines construct a once-continuously differentiable function that interpolates the measurement values as follows:

- For each measurement point a trivariate (3-D) / bivariate (2-D) quadratic is computed. It interpolates the measurement values at the data point and forms a least-square fit to neighboring measurement values.
- the spatial location of the quadratic with respect to the measurement values is attenuated by an inverse distance weighting. This is performed since the calculated quadratic will fit measurement values at nearby points more accurate than at points located further away.
- After the quadratics are calculated for all measurement points, the interpolating function is calculated as a weighted average of the quadratics.

There are two control parameters that govern the behavior of the interpolation method. One specifies the number of measurement points to be used in computing the least-square fits for the local quadratics. These measurement points are the ones nearest the input point for which the quadratic is being computed. The second parameter specifies the number of measurement points that will be used in calculating the weights for the quadratics to produce the final function. The input data points used there are the ones nearest the point at which the interpolation is desired. Appropriate defaults are chosen for each of the control parameters

The trivariate quadratics that have been previously computed for the 3-D interpolation and whose input data are at the closest distance from the phantom surface, are used in order to extrapolate the fields to the surface of the phantom.

In order to determine all the field maxima in 2-D (Area Scan) and 3-D (Zoom Scan), the measurement grid is refined by a default factor of 10 and the interpolation function is used to evaluate all field values between corresponding measurement points. Subsequently, a linear search is applied to find all the candidate maxima. In a last step, non physical maxima are removed and only those maxima which are within 2 dB of the global maximum value are retained.

**Important:** To be processable by the interpolation/extrapolation scheme, the Area Scan requires at least 6 measurement points. The Cube Scan requires at least 10 measurement points to allow an application of these algorithms.

In the Area Scan, the gradient of the interpolation function is evaluated to find all the extrema of the SAR distribution. The uncertainty on the locations of the extrema is less than 1/20 of the grid size. Only local maxima within -2 dB of the global maximum are searched and passed for the Cube Scan measurement.

In the Cube Scan, the interpolation function is used to extrapolate the Peak SAR from the lowest measurement points to the inner phantom surface (the extrapolation distance). The uncertainty increases with the extrapolation distance. To keep the uncertainty within 1% for the 1 g and 10 g cubes, the extrapolation distance should not be larger than 5mm.

### **5.1.2. Averaging and Determination of Spatial Peak SAR**

The interpolated data is used to average the SAR over the 1g and 10g cubes by spatially discretizing the entire measured volume. The resolution of this spatial grid used to calculate the averaged SAR is 1mm or about 42875 interpolated points. The resulting volumes are defined as cubical volumes containing the appropriate tissue parameters that are centered at the location. The location is defined as the center of the incremental volume (voxel).

The spatial-peak SAR must be evaluated in cubical volumes containing a mass that is within 5% of the required mass. The cubical volume centered at each location, as defined above, should be expanded in all directions until the desired value for the mass is reached, with no surface boundaries of the averaging volume extending beyond the outermost surface of the considered region. In addition, the cubical volume should not consist of more than 10% of air. If these conditions are not satisfied then the center of the averaging volume is moved to the next location. Otherwise, the exact size of the final sampling cube is found using an inverse polynomial approximation algorithm, leading to results with improved accuracy. If one boundary of the averaging volume reaches the boundary of the measured volume during its expansion, it will not be evaluated at all. Reference is kept of all locations used and those not used for averaging the SAR. All average SAR values are finally assigned to the centered location in each valid averaging volume.

All locations included in an averaging volume are marked to indicate that they have been used at least once. If a location has been marked as used, but has never been assigned to the center of a cube, the highest averaged SAR value of all other cubical volumes which have used this location for averaging, is assigned to this location. Only those locations that are not part of any valid averaging volume should be marked as unused. For the case of an unused location, a new averaging volume must be constructed which will have the unused location centered at one surface of the cube. The remaining five surfaces are expanded evenly in all directions until the required mass is enclosed, regardless of the amount of included air. Of the six possible cubes with one surface centered on the unused location, the smallest cube is used, which still contains the required mass.

If the final cube containing the highest averaged SAR touches the surface of the measured volume, an appropriate warning is issued within the postprocessing engine.

### **5.1.3. Evaluation Errors**

#### **5.1.3.1. Cube shape**

The mentioned procedures search for the maximum averaged 1g and 10g volumes of cubical shape according to the ANSI and ICNIRP standard. A density of 1000 kg/m<sup>3</sup> is used to represent the head tissue density and not the tissue simulating liquid density.

#### **5.1.3.2. Extrapolation**

For the extrapolation the distance must be specified in the Area Scan and Zoom Scan Jobs. The distance is defined as the distance between the probe sensor center and the phantom surface. The recommended distance is 4-5 mm.

#### **5.1.3.3. *Boundary effects***

The dosimetric probes are calibrated in a gradient field with energy flow and decay in direction of the probe axis. During calibration the probe tip is completely surrounded by the simulating solution. If the probe is used in the immediate vicinity of a media boundary, the field in the probe is altered due to interaction with the field in the boundary and the probe sensitivity changes. The influence of the boundary effect depends on the probe construction, the media parameters and the probe orientation with respect to the boundary. It disappears at a distance of 1mm (E1D-probe) to 5mm (ET3D-probes) between the probe tip and the boundary. The boundary effect must be considered in the extrapolation to the surface.

## **EXHIBIT 6. MEASUREMENTS, EXAMINATIONS & TEST DATA**

### **6.1. TEST CONFIGURATIONS**

#### **6.1.1. UHF Narrow Band 435-470MHz**

<b>D.U.T. Information</b>		<b>Condition</b>	
<b>Product Name</b>	Icom Inc.	<b>Robot Type</b>	6 Axis
<b>Model Number</b>	IC-F2000T	<b>Scan Type</b>	SAR – Area/Zoom/Att. Vs Depth
<b>Serial Number</b>	0000708-0	<b>Measured Field</b>	E
<b>Frequency Band</b> [MHz]	Narrow Band: 450-512 MHz	<b>Phantom Type</b>	2 <sub>mm</sub> base Flat Phantom
<b>Frequency Tested</b> [MHz]	450, 460, 465.5, 470, 481, 490, 496.5, 500, 512 MHz	<b>Phantom Position</b>	Waist
<b>Maximum Conducted Power</b>	Narrow Band: 4W	<b>Room Temperature</b> [°C]	22.0 ± 1
<b>Antenna Type</b>	Whip, Stubby and Cut Antenna	<b>Room Humidity</b> [%]	35 ± 10
<b>Modulation</b>	UHF FM	<b>Tissue Temperature</b> [°C]	20.8 ± 1
<b>Worst Case Duty Cycle</b>	100 %		
<b>Duty Cycle Tested</b>	100%		
<b>Source(or Usage)-Based Time-Average Factor</b>	50% PTT		

<b>Type of Tissue</b>	Brain	Muscle
<b>Test Frequency</b> [MHz]	450	450
<b>Target Conductivity</b> [S/m]	0.87	0.94
<b>Measured Conductivity</b> [S/m]	0.83 (-4.8 %)	0.90(-4.3 %)
<b>Target Dielectric Constant</b>	43.5	56.7
<b>Measured Dielectric Constant</b>	42.6 (-2.2 %)	55.7(-1.8 %)
<b>Penetration Depth (Plane Wave Excitation)</b> [mm]	44.5	46.1
<b>Probe Model Number</b>	ES3DV3	ES3DV4
<b>Probe Serial Number</b>	3208	3673
<b>Probe Orientation</b>	Isotropic	Isotropic
<b>Probe Sensor Offset</b> [mm]	2	1
<b>Probe Tip Diameter</b> [mm]	4	2.5
<b>Conversion Factor</b> (γ)	10.35	9.11

#### **ULTRATECH GROUP OF LABS**

3000 Bristol Circle, Oakville, Ontario, Canada L6H 6G4  
Tel. #: 905-829-1570, Fax. #: 905-829-8050, Email: [vic@ultratech-labs.com](mailto:vic@ultratech-labs.com), Website: <http://www.ultratech-labs.com>

**File #: ICOM-383Q-SAR**  
Dec 1, 2014

- All test results contained in this engineering test report are traceable to National Institute of Standards and Technology (NIST)

## **6.2. GENERAL TEST SETUP**

### **6.2.1. *Equipment Configuration***

Power and signal distribution, grounding, interconnecting cabling and physical placement of equipment of a test system shall simulate the typical application and usage in so far as is practicable, and shall be in accordance with the relevant product specifications of the manufacturer.

The configuration that tends to maximize the D.U.T's emission or minimize its immunity is not usually intuitively obvious and in most instances selection will involve some trial and error testing. For example, interface cables may be moved or equipment re-orientated during initial stages of testing and the effects on the results observed.

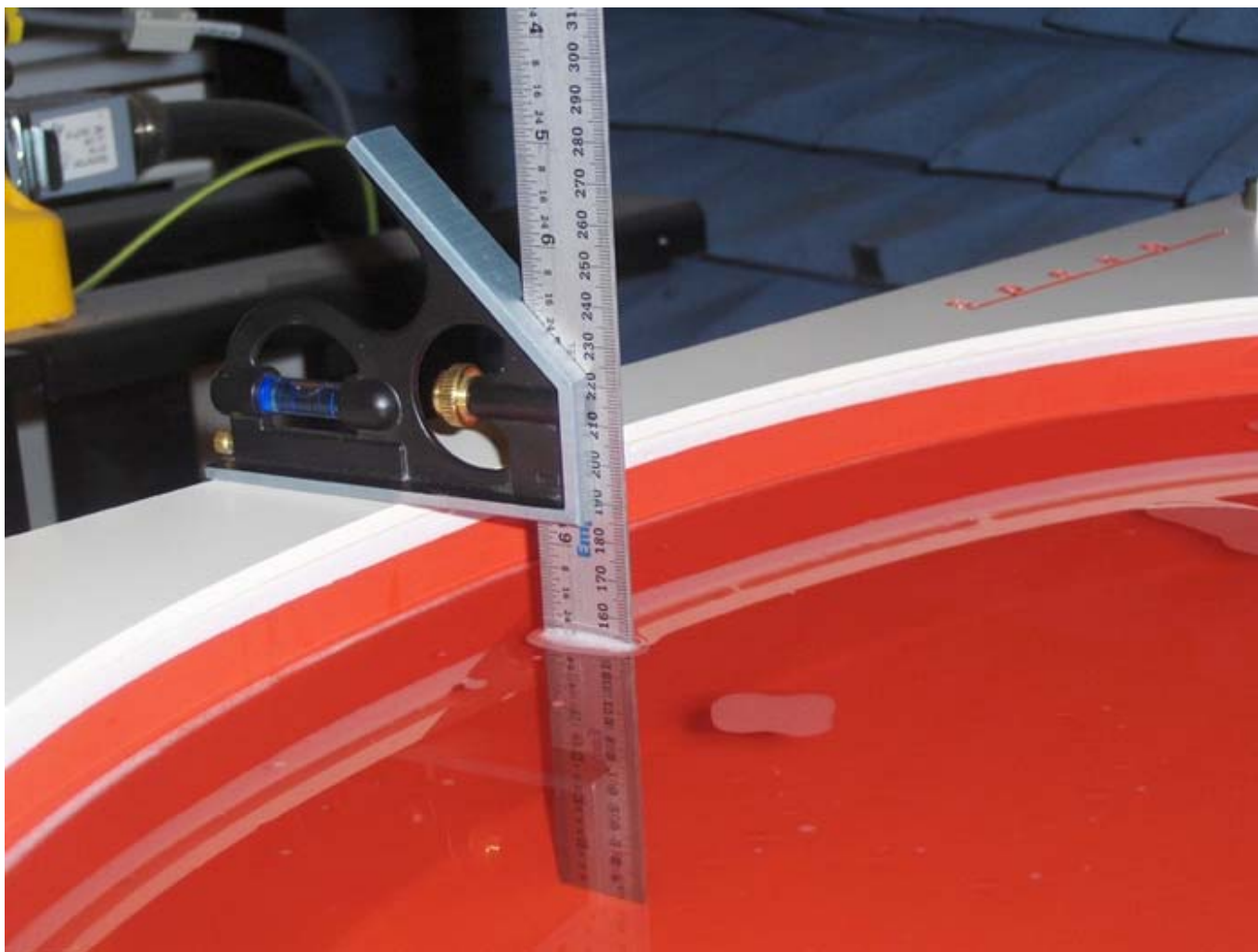
Only configurations within the range of positions likely to occur in normal use need to be considered.

The configuration selected shall be fully detailed and documented in the test report, together with the justification for selecting that particular configuration.

### **6.2.2. *Exercising Equipment***

The exercising equipment and other auxiliary equipment shall be sufficiently decoupled from the D.U.T. so that the performance of such equipment does not significantly influence the test results.

### 6.3. PHOTOGRAPHS OF TISSUE DEPTH



< Phantom filled with body tissue liquid: liquid level = 150mm  $\pm$  5mm >

#### ULTRATECH GROUP OF LABS

3000 Bristol Circle, Oakville, Ontario, Canada L6H 6G4  
Tel. #: 905-829-1570, Fax. #: 905-829-8050, Email: [vic@ultratech-labs.com](mailto:vic@ultratech-labs.com), Website: <http://www.ultratech-labs.com>

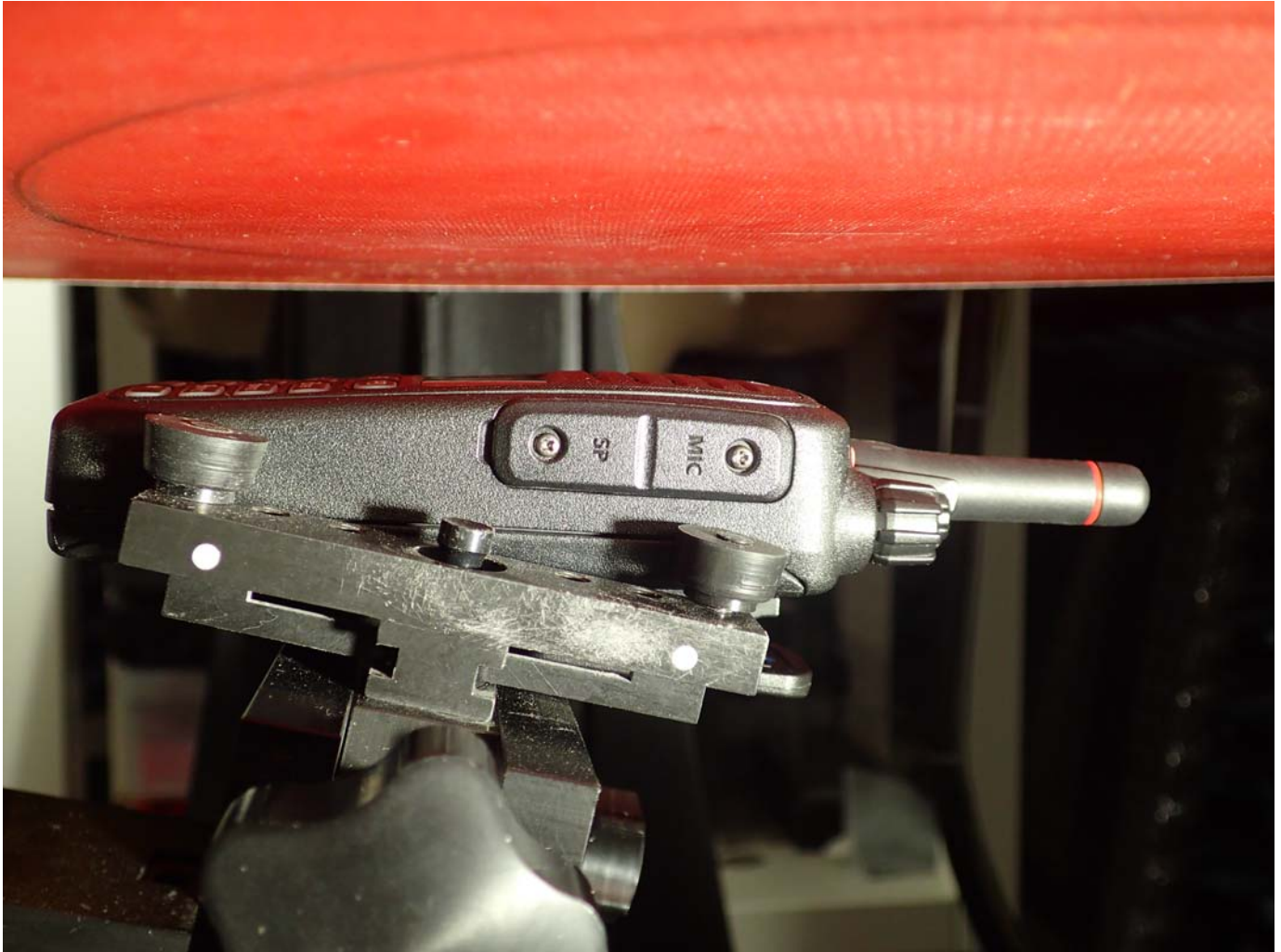
File #: ICOM-383Q-SAR  
Dec 1, 2014

- All test results contained in this engineering test report are traceable to National Institute of Standards and Technology (NIST)



**6.3.1. Head Configuration for in front of face Position – 25mm**

Shortest and Longest Antenna used to show spacing and antenna orientation to phantom surface. The battery pack did not affect the spacing and antenna orientation so the thinnest battery pack BP-278 is shown.



**<Face Frontal Position, FA-SC73US 60mm Stubby Antenna, BP-278 battery pack>**

**Remark:** Distance between Front side of the EUT and the phantom = 25 mm

**ULTRATECH GROUP OF LABS**

3000 Bristol Circle, Oakville, Ontario, Canada L6H 6G4  
Tel. #: 905-829-1570, Fax. #: 905-829-8050, Email: [vic@ultratech-labs.com](mailto:vic@ultratech-labs.com), Website: <http://www.ultratech-labs.com>

**File #: ICOM-383Q-SAR**  
Dec 1, 2014

- All test results contained in this engineering test report are traceable to National Institute of Standards and Technology (NIST)



**<Face Frontal Position, FA-SC61UC 144mm Cut Antenna, BP-278 battery pack>**

**Remark:** Distance between Front side of the EUT and the phantom = 25 mm

**ULTRATECH GROUP OF LABS**

3000 Bristol Circle, Oakville, Ontario, Canada L6H 6G4  
Tel. #: 905-829-1570, Fax. #: 905-829-8050, Email: [vic@ultratech-labs.com](mailto:vic@ultratech-labs.com), Website: <http://www.ultratech-labs.com>

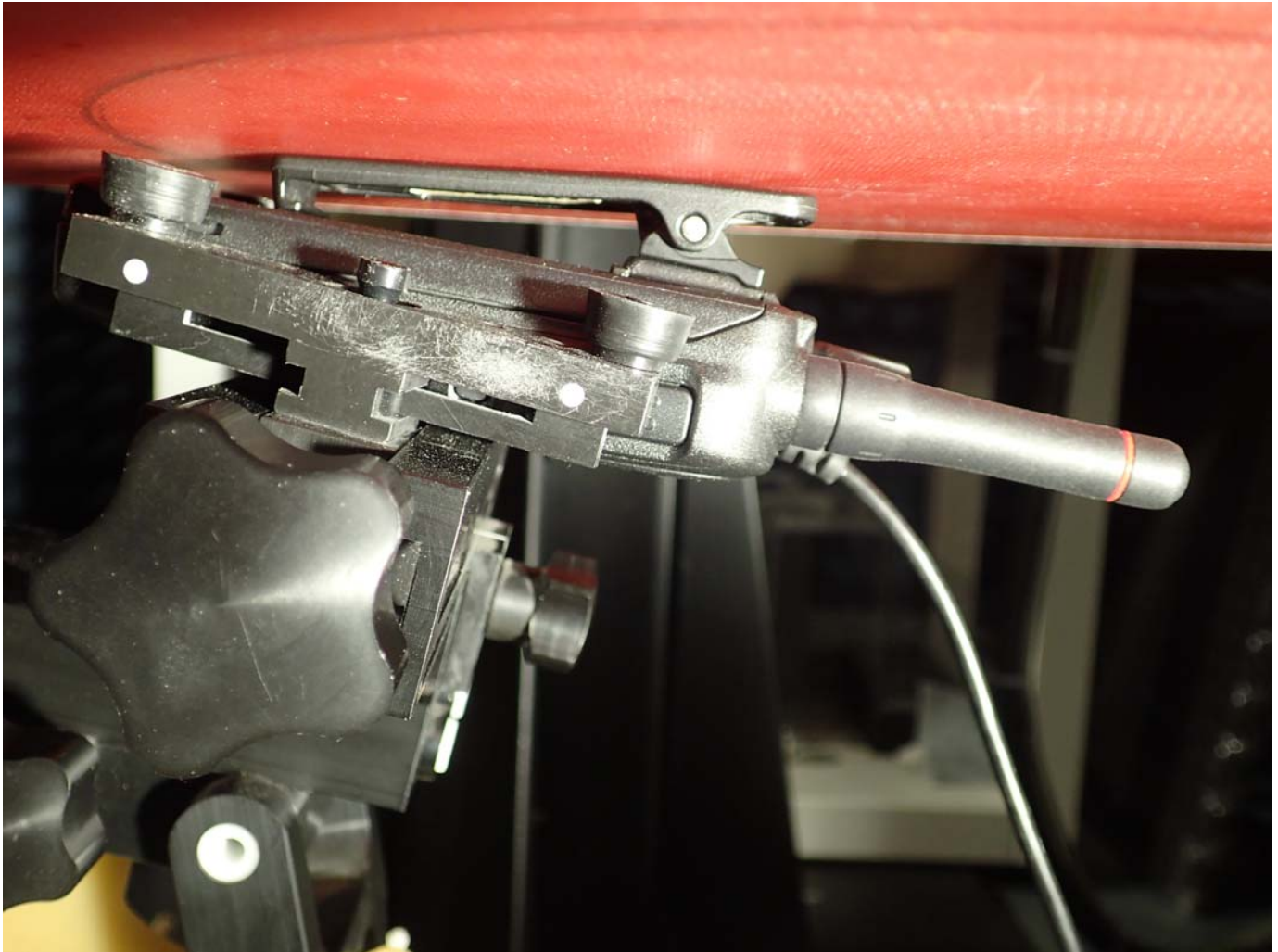
**File #: ICOM-383Q-SAR**  
Dec 1, 2014

- All test results contained in this engineering test report are traceable to National Institute of Standards and Technology (NIST)



### **6.3.2. Body Configuration for BP-278 Battery Pack(Thinnest)**

Shortest and Longest Antenna used to show spacing and antenna orientation to phantom surface.



**< Belt Clip Touch Position & FA-SC73US 60mm Stubby Antenna >**

**Remark:** Distance between Back side of the EUT and the phantom = 0 mm

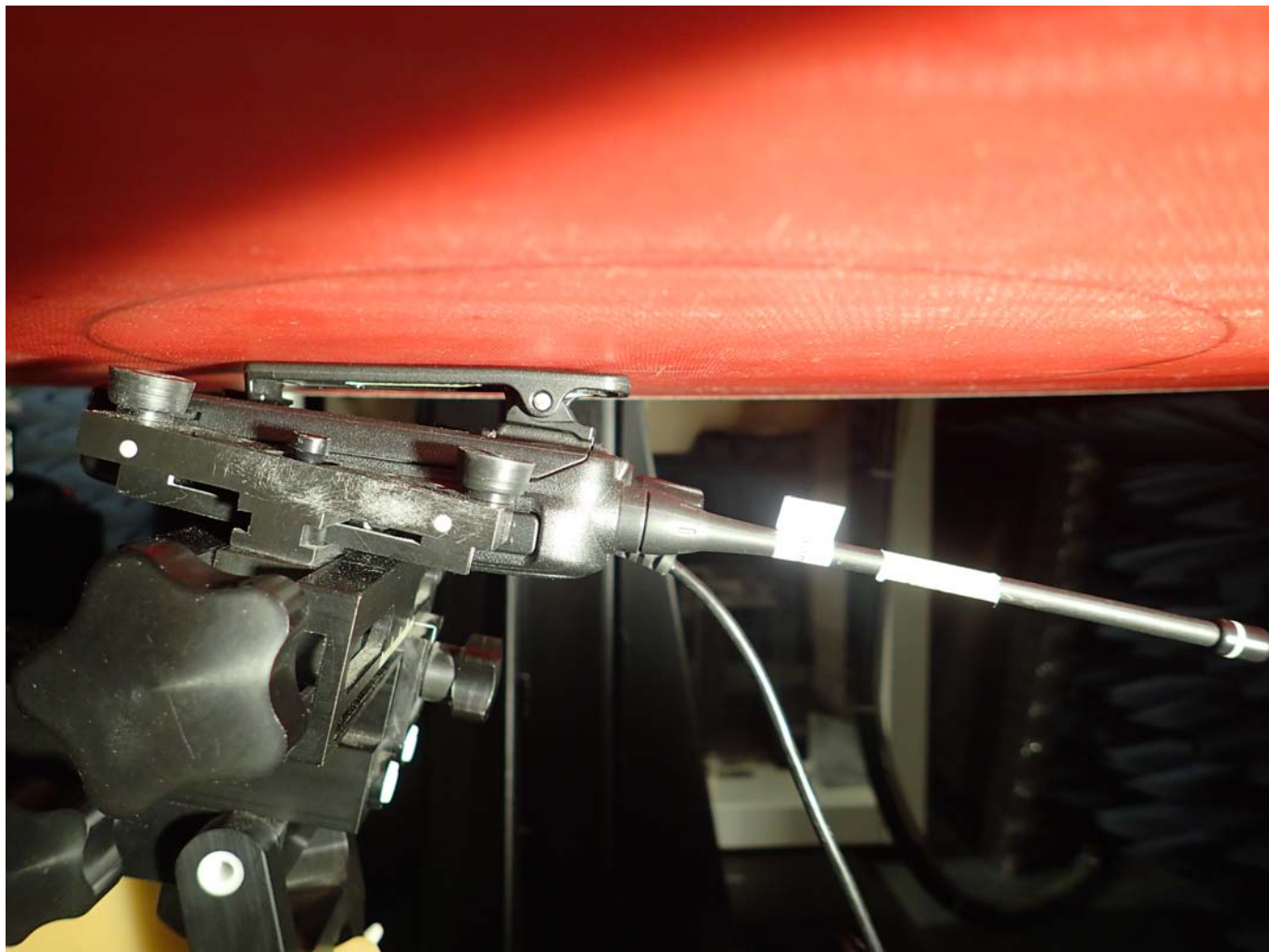
---

#### **ULTRATECH GROUP OF LABS**

3000 Bristol Circle, Oakville, Ontario, Canada L6H 6G4  
Tel. #: 905-829-1570, Fax. #: 905-829-8050, Email: [vic@ultratech-labs.com](mailto:vic@ultratech-labs.com), Website: <http://www.ultratech-labs.com>

**File #: ICOM-383Q-SAR**  
Dec 1, 2014

- All test results contained in this engineering test report are traceable to National Institute of Standards and Technology (NIST)



**< Belt Clip Touch Position & FA-SC61UC 144mm Cut Antenna >**

**Remark:** Distance between Back side of the EUT and the phantom = 0 mm

---

**ULTRATECH GROUP OF LABS**

3000 Bristol Circle, Oakville, Ontario, Canada L6H 6G4  
Tel. #: 905-829-1570, Fax. #: 905-829-8050, Email: [vic@ultratech-labs.com](mailto:vic@ultratech-labs.com), Website: <http://www.ultratech-labs.com>

**File #: ICOM-383Q-SAR**  
Dec 1, 2014

- All test results contained in this engineering test report are traceable to National Institute of Standards and Technology (NIST)

### **6.3.3. Body Configuration for BP-279 Battery Pack**

Shortest and Longest Antenna used to show spacing and antenna orientation to phantom surface.



**< Belt Clip Touch Position & FA-SC73US 60mm Stubby Antenna >**

**Remark:** Distance between Back side of the EUT and the phantom = 0 mm

---

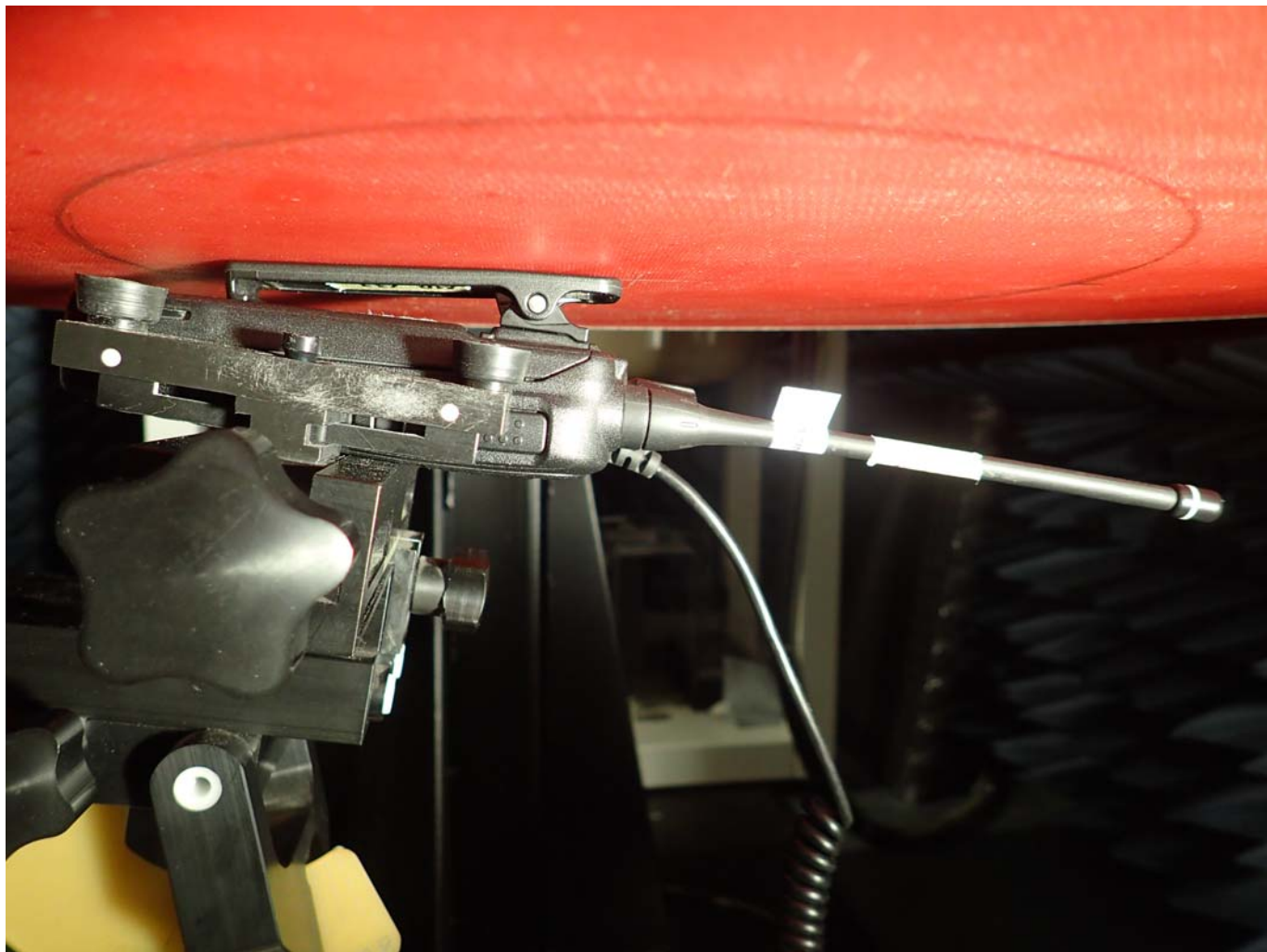
#### **ULTRATECH GROUP OF LABS**

3000 Bristol Circle, Oakville, Ontario, Canada L6H 6G4  
Tel. #: 905-829-1570, Fax. #: 905-829-8050, Email: [vic@ultratech-labs.com](mailto:vic@ultratech-labs.com), Website: <http://www.ultratech-labs.com>

**File #: ICOM-383Q-SAR**  
Dec 1, 2014

- All test results contained in this engineering test report are traceable to National Institute of Standards and Technology (NIST)





**< Belt Clip Touch Position & FA-SC61UC 144mm Cut Antenna >**

**Remark:** Distance between Back side of the EUT and the phantom = 0 mm

---

**ULTRATECH GROUP OF LABS**

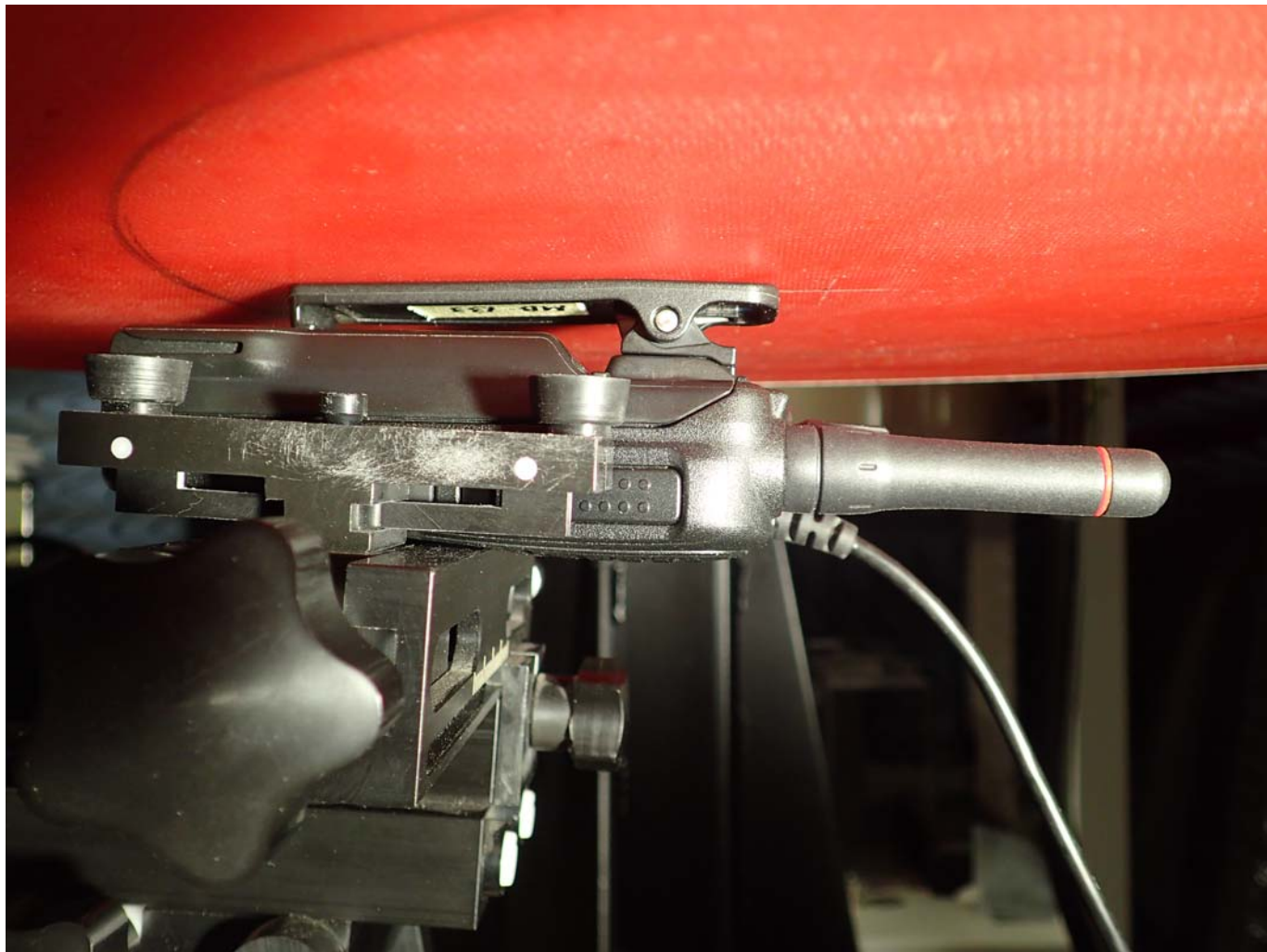
3000 Bristol Circle, Oakville, Ontario, Canada L6H 6G4  
Tel. #: 905-829-1570, Fax. #: 905-829-8050, Email: [vic@ultratech-labs.com](mailto:vic@ultratech-labs.com), Website: <http://www.ultratech-labs.com>

**File #: ICOM-383Q-SAR**  
Dec 1, 2014

- All test results contained in this engineering test report are traceable to National Institute of Standards and Technology (NIST)

#### **6.3.4. Body Configuration for BP-280 Battery Pack(Fattest)**

Shortest and Longest Antenna used to show spacing and antenna orientation to phantom surface.



**< Belt Clip Touch Position & FA-SC73US 60mm Stubby Antenna >**

**Remark:** Distance between Back side of the EUT and the phantom = 0 mm

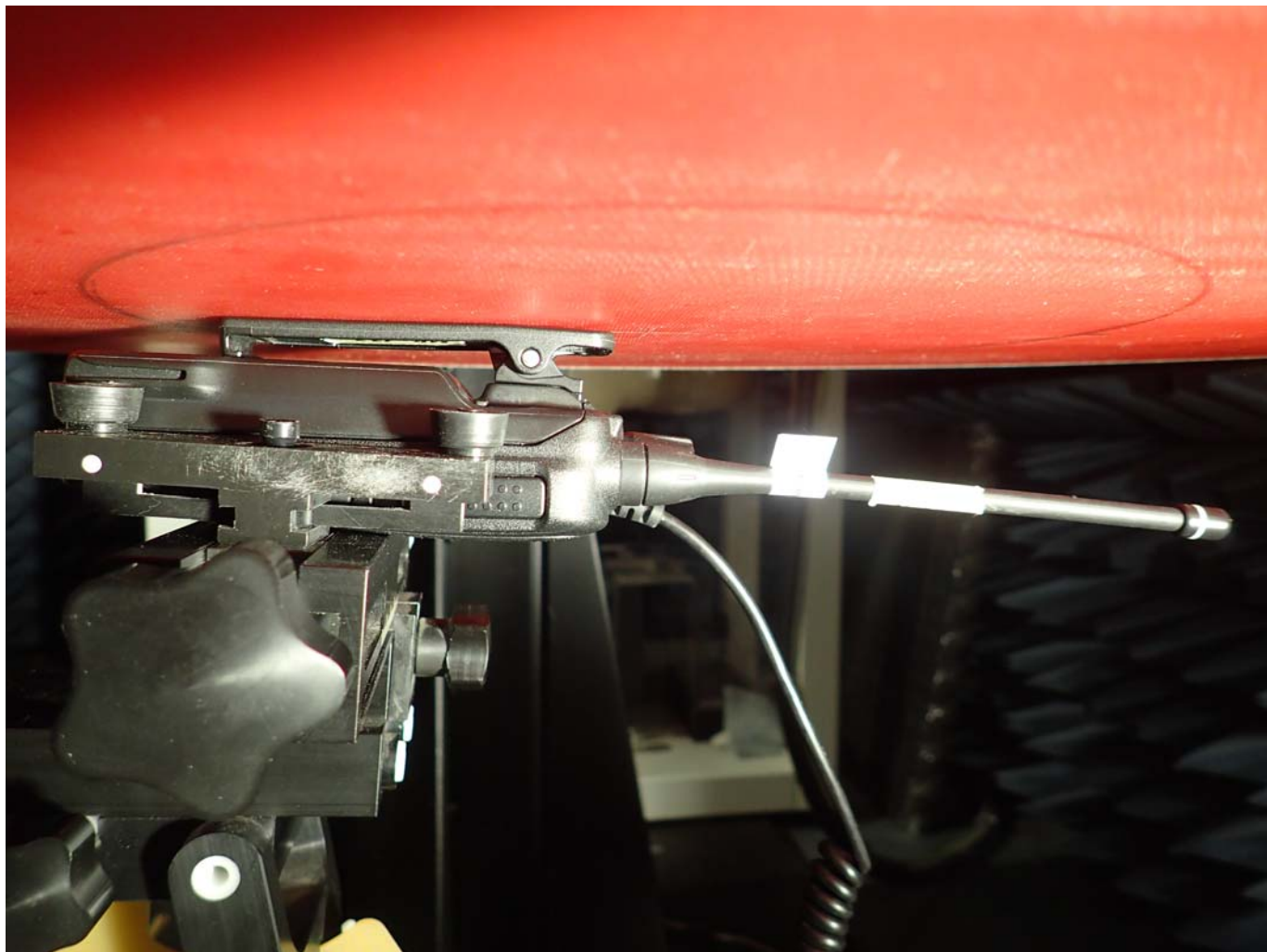
---

#### **ULTRATECH GROUP OF LABS**

3000 Bristol Circle, Oakville, Ontario, Canada L6H 6G4  
Tel. #: 905-829-1570, Fax. #: 905-829-8050, Email: [vic@ultratech-labs.com](mailto:vic@ultratech-labs.com), Website: <http://www.ultratech-labs.com>

**File #: ICOM-383Q-SAR**  
Dec 1, 2014

- All test results contained in this engineering test report are traceable to National Institute of Standards and Technology (NIST)



**< Belt Clip Touch Position & FA-SC61UC 144mm Cut Antenna >**

**Remark:** Distance between Back side of the EUT and the phantom = 0 mm

---

**ULTRATECH GROUP OF LABS**

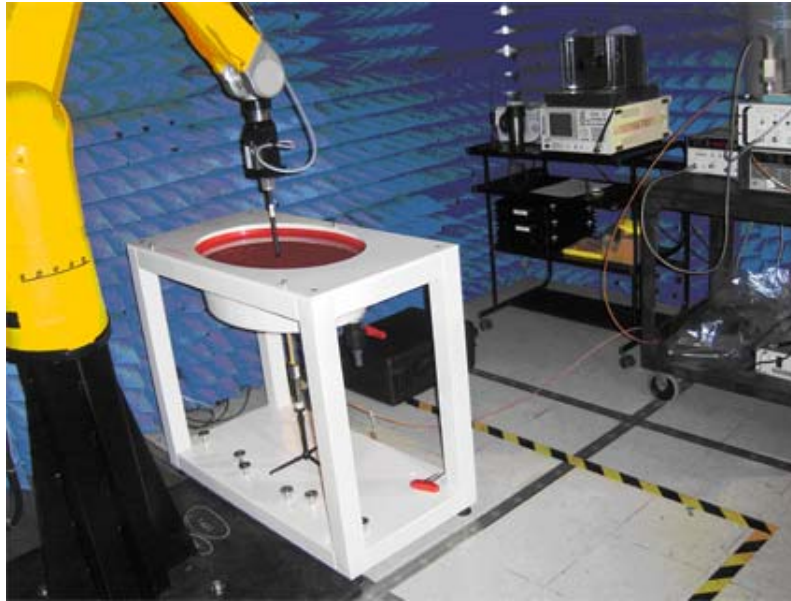
3000 Bristol Circle, Oakville, Ontario, Canada L6H 6G4  
Tel. #: 905-829-1570, Fax. #: 905-829-8050, Email: [vic@ultratech-labs.com](mailto:vic@ultratech-labs.com), Website: <http://www.ultratech-labs.com>

**File #: ICOM-383Q-SAR**  
Dec 1, 2014

- All test results contained in this engineering test report are traceable to National Institute of Standards and Technology (NIST)

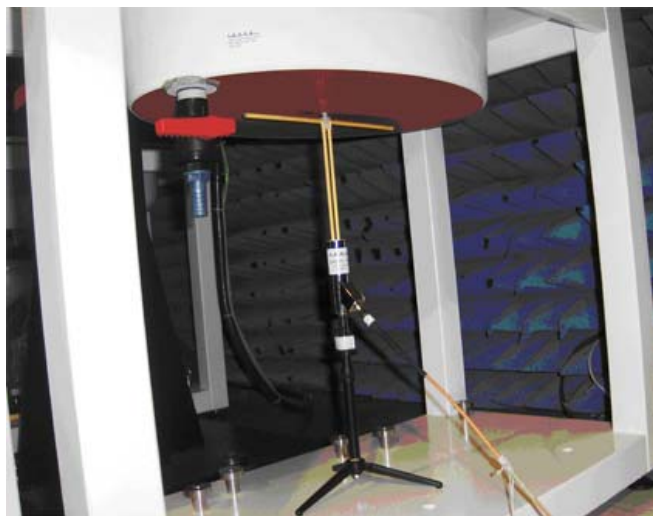


## EXHIBIT 7. SAR MEASUREMENT SYSTEM VERIFICATION



### 7.1. STANDARD SOURCE

A half-wave dipole is positioned below the bottom of the phantom and centered with its axis parallel to the longest side of the phantom. The distance between the liquid filled phantom bottom surface and the center of the dipole axis,  $s$ , is chosen as specified IEEE 1528 at the specific test frequency (i.e. 15 mm at 835 MHz). A low loss and low dielectric constant spacer is used to establish the correct distance between the top surface of the dipole and the bottom surface of the phantom.



### ULTRATECH GROUP OF LABS

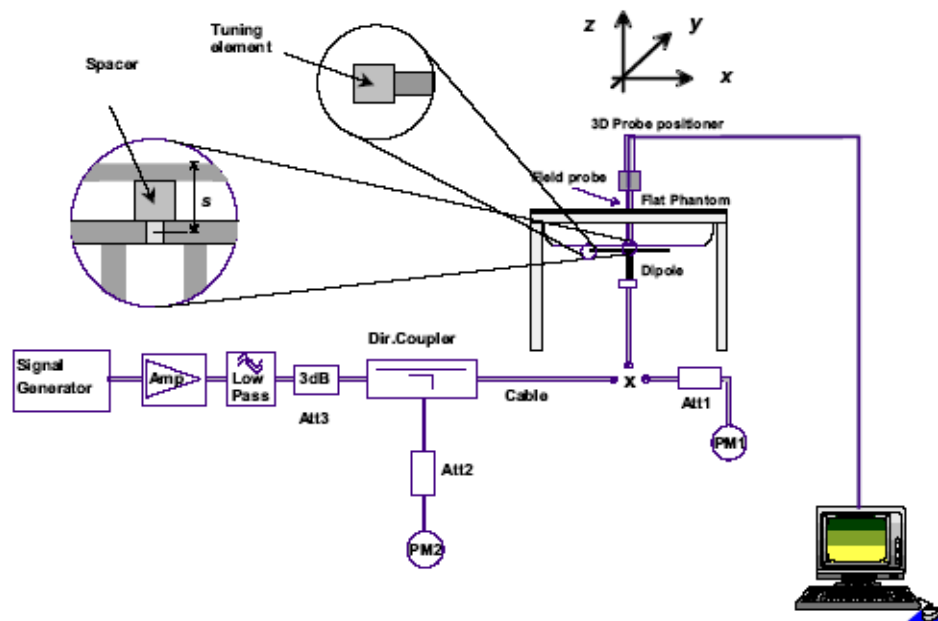
3000 Bristol Circle, Oakville, Ontario, Canada L6H 6G4  
Tel. #: 905-829-1570, Fax. #: 905-829-8050, Email: [vic@ultratech-labs.com](mailto:vic@ultratech-labs.com), Website: <http://www.ultratech-labs.com>

File #: ICOM-383Q-SAR  
Dec 1, 2014

- All test results contained in this engineering test report are traceable to National Institute of Standards and Technology (NIST)

## 7.2. STANDARD SOURCE INPUT POWER MEASUREMENT

The system validation is performed as shown below or in Figure 7.1 in IEEE 1528.



First the power meter PM1 (including attenuator Att1) is connected to the cable to measure the forward power at the location of the dipole connector (X). The signal generator is adjusted for the desired forward power at the dipole connector (taking into account the attenuation of Att1) as read by power meter PM2. After connecting the cable to the dipole, the signal generator is readjusted for the same reading at power meter PM2. If the signal generator does not allow adjustment in 0.01dB steps, the remaining difference at PM2 must be taken into consideration. PM3 records the reflected power from the dipole to ensure that the value is not changed from the previous value. The reflected power was verified to be at least 20dB below the forward power.

## 7.3. SYSTEM VALIDATION PROCEDURE

A complete 1g-averaged SAR measurement is performed. The measured 1g-averaged SAR value is normalized to a forward power of 1W to a half-wave dipole and compared with the reference SAR value for the reference dipole and flat phantom shown in columns 2 and 3 of Table 7.1 in IEEE 1528.

### ULTRATECH GROUP OF LABS

3000 Bristol Circle, Oakville, Ontario, Canada L6H 6G4  
Tel. #: 905-829-1570, Fax. #: 905-829-8050, Email: [vic@ultratech-labs.com](mailto:vic@ultratech-labs.com), Website: <http://www.ultratech-labs.com>

File #: ICOM-383Q-SAR  
Dec 1, 2014

- All test results contained in this engineering test report are traceable to National Institute of Standards and Technology (NIST)



## **7.4. VERIFICATION RESULTS**

### **7.4.1. Dipole D450V3 – SN:1003 Reference SAR values\***

	Frequency (MHz)	SAR1g			SAR10g		
		Reference (mw/g)	Measured	Delta %	Reference (mw/g)	Measured	Delta %
Head	450	4.77	4.92	3.14%	3.17	3.264	2.97%
Body	450	4.52	4.56	0.88%	3.01	3.076	2.19%

\* SAR values in 7.4.1 are normalized to a forward power of 1 W.

## **ULTRATECH GROUP OF LABS**

3000 Bristol Circle, Oakville, Ontario, Canada L6H 6G4  
Tel. #: 905-829-1570, Fax. #: 905-829-8050, Email: [vic@ultratech-labs.com](mailto:vic@ultratech-labs.com), Website: <http://www.ultratech-labs.com>

**File #: ICOM-383Q-SAR**  
Dec 1, 2014

- All test results contained in this engineering test report are traceable to National Institute of Standards and Technology (NIST)

#### 7.4.2. Verification at 450 MHz Head

Test Laboratory: Ultratech Group of Labs

File Name: [Sys.Ver.Check-D450MHz\\_ICOM-383Q\\_Head.da52:0](#)

**DUT: Dipole 450 MHz D450V3; Type: SA AAD 045 CA; Serial: 1063**

**Program Name: System Performance Check at 450 MHz**

Communication System: UID 10000, CW; Frequency: 450 MHz; Duty Cycle: 1:1

Medium parameters used:  $f = 450 \text{ MHz}$ ;  $\sigma = 0.921 \text{ S/m}$ ;  $\epsilon_r = 56.899$ ;  $\rho = 1000 \text{ kg/m}^3$

Phantom section: Flat Section

DASY4 Configuration:

- Probe: ES3DV3 - SN3208; ConvF(7.08, 7.08, 7.08); Calibrated: 3/13/2013;
- Sensor-Surface: 3.4mm (Mechanical Surface Detection), Sensor-Surface: 4mm (Mechanical Surface Detection)
- Electronics: DAE4 Sn874; Calibrated: 10/9/2014
- Phantom: ELI 4.0; Type: QD OVA 001 BB; Serial: 1057
- ; SEMCAD X Version 14.6.10 (7331)

**System Verification Configuration for 450MHz\_Head/d=15mm, Pin=250mW, dist=3.4mm (ES-Probe)/Area Scan (61x81x1):** Interpolated grid:  $dx=1.500 \text{ mm}$ ,  $dy=1.500 \text{ mm}$   
Maximum value of SAR (interpolated) = 1.34 W/kg

**System Verification Configuration for 450MHz\_Head/d=15mm, Pin=250mW, dist=3.4mm (ES-Probe)/Zoom Scan (7x7x7) (7x7x7)/Cube 0:** Measurement grid:  $dx=5\text{mm}$ ,  $dy=5\text{mm}$ ,  $dz=5\text{mm}$

Reference Value = 37.26 V/m; Power Drift = 0.02 dB

Peak SAR (extrapolated) = 1.89 W/kg

**SAR(1 g) = 1.23 W/kg; SAR(10 g) = 0.816 W/kg** (SAR corrected for target medium)

Maximum value of SAR (measured) = 1.29 W/kg

---

#### ULTRATECH GROUP OF LABS

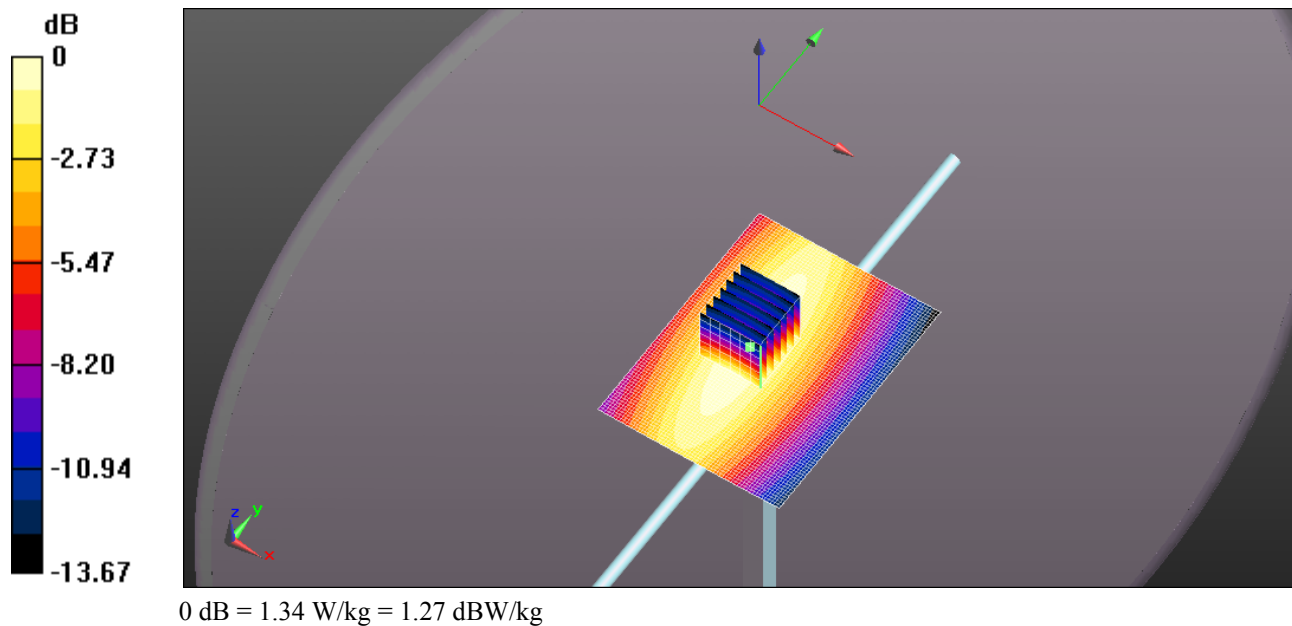
3000 Bristol Circle, Oakville, Ontario, Canada L6H 6G4

Tel. #: 905-829-1570, Fax. #: 905-829-8050, Email: [vic@ultratech-labs.com](mailto:vic@ultratech-labs.com), Website: <http://www.ultratech-labs.com>

File #: ICOM-383Q-SAR

Dec 1, 2014

- All test results contained in this engineering test report are traceable to National Institute of Standards and Technology (NIST)



**ULTRATECH GROUP OF LABS**

3000 Bristol Circle, Oakville, Ontario, Canada L6H 6G4  
Tel. #: 905-829-1570, Fax. #: 905-829-8050, Email: [vic@ultratech-labs.com](mailto:vic@ultratech-labs.com), Website: <http://www.ultratech-labs.com>

**File #: ICOM-383Q-SAR**  
Dec 1, 2014

- All test results contained in this engineering test report are traceable to National Institute of Standards and Technology (NIST)

### **7.4.3. Verification at 450 MHz Body**

Test Laboratory: Ultratech Group of Labs

File Name: [Sys.Ver.Check-D450MHz\\_ICOM-383Q\\_Body.da52:0](#)

**DUT: Dipole 450 MHz D450V3; Type: SA AAD 045 CA; Serial: 1063**  
**Program Name: System Performance Check at 450 MHz**

Communication System: UID 10000, CW; Frequency: 450 MHz; Duty Cycle: 1:1  
Medium parameters used:  $f = 450 \text{ MHz}$ ;  $\sigma = 0.9 \text{ S/m}$ ;  $\epsilon_r = 55.686$ ;  $\rho = 1000 \text{ kg/m}^3$   
Phantom section: Flat Section

DASY4 Configuration:

- Probe: EX3DV4 - SN3673; ConvF(9.11, 9.11, 9.11); Calibrated: 10/17/2014;
- Sensor-Surface: 3.4mm (Mechanical Surface Detection), Sensor-Surface: 4mm (Mechanical Surface Detection)
- Electronics: DAE4 Sn874; Calibrated: 10/9/2014
- Phantom: ELI 4.0; Type: QD OVA 001 BB; Serial: 1057
- ; SEMCAD X Version 14.6.10 (7331)

**System Verification Configuration for 450MHz\_Head/d=15mm, Pin=250mW, dist=3.4mm (ES-Probe)/Area Scan (61x81x1):** Interpolated grid:  $dx=1.500 \text{ mm}$ ,  $dy=1.500 \text{ mm}$   
Maximum value of SAR (interpolated) =  $1.21 \text{ W/kg}$

**System Verification Configuration for 450MHz\_Head/d=15mm, Pin=250mW, dist=3.4mm (ES-Probe)/Zoom Scan (7x7x7) (7x7x7)/Cube 0:** Measurement grid:  $dx=5\text{mm}$ ,  $dy=5\text{mm}$ ,  $dz=5\text{mm}$   
Reference Value =  $36.85 \text{ V/m}$ ; Power Drift =  $0.06 \text{ dB}$   
Peak SAR (extrapolated) =  $1.68 \text{ W/kg}$   
**SAR(1 g) =  $1.14 \text{ W/kg}$ ; SAR(10 g) =  $0.769 \text{ W/kg}$**  (SAR corrected for target medium)  
Maximum value of SAR (measured) =  $1.18 \text{ W/kg}$

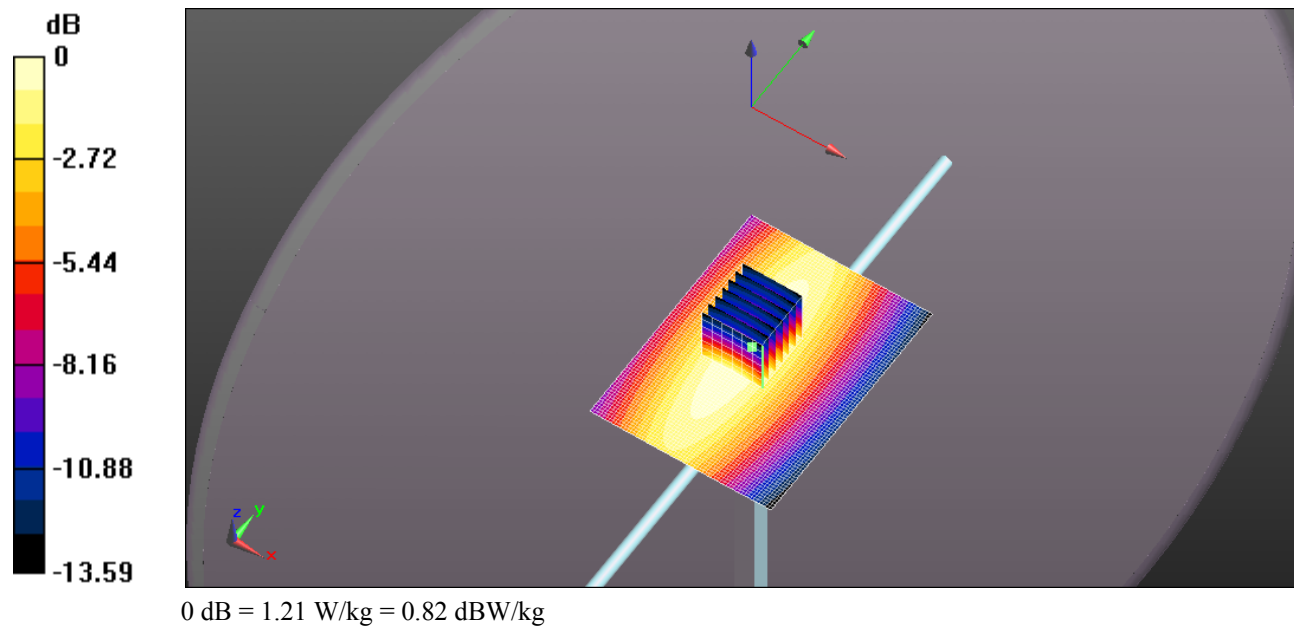
---

**ULTRATECH GROUP OF LABS**

3000 Bristol Circle, Oakville, Ontario, Canada L6H 6G4  
Tel. #: 905-829-1570, Fax. #: 905-829-8050, Email: [vic@ultratech-labs.com](mailto:vic@ultratech-labs.com), Website: <http://www.ultratech-labs.com>

**File #: ICOM-383Q-SAR**  
Dec 1, 2014

- All test results contained in this engineering test report are traceable to National Institute of Standards and Technology (NIST)



**ULTRATECH GROUP OF LABS**

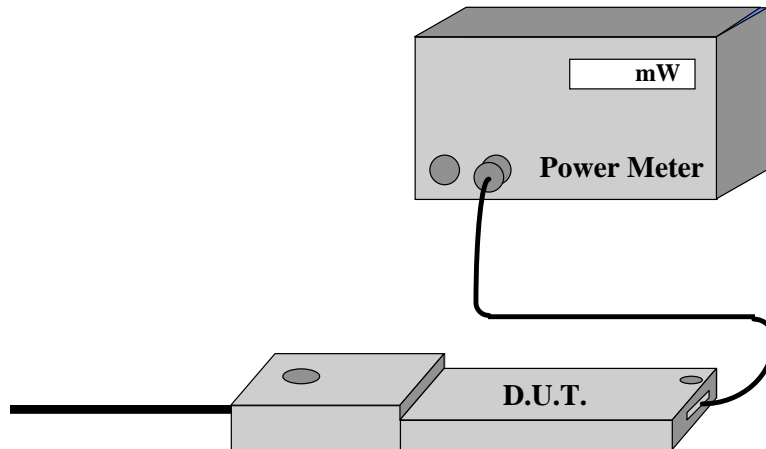
3000 Bristol Circle, Oakville, Ontario, Canada L6H 6G4  
Tel. #: 905-829-1570, Fax. #: 905-829-8050, Email: [vic@ultratech-labs.com](mailto:vic@ultratech-labs.com), Website: <http://www.ultratech-labs.com>

File #: ICOM-383Q-SAR  
Dec 1, 2014

- All test results contained in this engineering test report are traceable to National Institute of Standards and Technology (NIST)

## **EXHIBIT 8. D.U.T. POWER MEASUREMENT**

Whenever possible, a conducted power measurement is performed. To accomplish this, we utilize a fully charged battery, a calibrated power meter and a cable adapter provided by the manufacturer. The data of the cable and related circuit losses are also provided by the manufacturer. The power measurement is then performed across the operational band and the channel with the highest output power is recorded.



Power measurement is performed before and after the SAR to verify if the battery was delivering full power at the time of testing. A difference in output power would determine a need for battery replacement and to repeat the SAR test.

---

### **ULTRATECH GROUP OF LABS**

3000 Bristol Circle, Oakville, Ontario, Canada L6H 6G4  
Tel. #: 905-829-1570, Fax. #: 905-829-8050, Email: [vic@ultratech-labs.com](mailto:vic@ultratech-labs.com), Website: <http://www.ultratech-labs.com>

**File #: ICOM-383Q-SAR**  
Dec 1, 2014

- All test results contained in this engineering test report are traceable to National Institute of Standards and Technology (NIST)

### **8.1.1. RF Conducted output power measurement**

Scaling Factors user to obtain Reported SAR data are derived from the maximum tune-up power divided by the measured average conducted power. The measured SAR is only scaled up to obtain the Reported SAR.

<b>Channel Number</b>	<b>Frequency (MHz)</b>	<b>Power (dBm)</b>
1	450	36.23
2	460	36.20
3	465.5	36.25
4	470	36.26
5	480	36.60
6	481	36.60
7	491	36.19
8	496.5	36.23
9	500	36.18
10	512	36.10

---

#### **ULTRATECH GROUP OF LABS**

3000 Bristol Circle, Oakville, Ontario, Canada L6H 6G4  
Tel. #: 905-829-1570, Fax. #: 905-829-8050, Email: [vic@ultratech-labs.com](mailto:vic@ultratech-labs.com), Website: <http://www.ultratech-labs.com>

**File #: ICOM-383Q-SAR**  
Dec 1, 2014

- All test results contained in this engineering test report are traceable to National Institute of Standards and Technology (NIST)



## EXHIBIT 9. TISSUE DIELECTRIC PARAMETER CALIBRATION

### 9.1. SIMULATED TISSUE

Simulated Tissue: Suggested in a paper by George Hartsgrrove and colleagues in University of Ottawa Ref.: Bioelectromagnetics 8:29-36 (1987)

Ingredient	Quantity
Water	40.4 %
Sugar	56.0 %
Salt	2.5 %
HEC	1.0 %
Bactericide	0.1 %

**Table 9.1 Example of composition of simulated tissue**

This simulated tissue is mainly composed of water, sugar and salt. At higher frequencies, in order to achieve the proper conductivity, the solution does not contain salt. Also, at these frequencies, D.I. water and alcohol is preferred.

Target Frequency (MHz)	Head		Body	
	$\epsilon_r$	$\sigma$ (S/m)	$\epsilon_r$	$\sigma$ (S/m)
150	52.3	0.76	61.9	0.80
300	45.3	0.87	58.2	0.92
450	43.5	0.87	56.7	0.94
835	41.5	0.90	55.2	0.97
900	41.5	0.97	55.0	1.05
915	41.5	0.98	55.0	1.06
1450	40.5	1.20	54.0	1.30
1610	40.3	1.29	53.8	1.40
1800 – 2000	40.0	1.40	53.3	1.52
2450	39.2	1.80	52.7	1.95
3000	38.5	2.40	52.0	2.73
5800	35.3	5.27	48.2	6.00

( $\epsilon_r$  = relative permittivity,  $\sigma$  = conductivity and  $\rho = 1000 \text{ Kg/m}^3$ \*)

\* The actual mass density of the equivalent tissue varies based on the composition of the tissue from  $990 \text{ Kg/m}^3$  to  $1,300 \text{ Kg/m}^3$ .

#### ULTRATECH GROUP OF LABS

3000 Bristol Circle, Oakville, Ontario, Canada L6H 6G4  
Tel. #: 905-829-1570, Fax. #: 905-829-8050, Email: [vic@ultratech-labs.com](mailto:vic@ultratech-labs.com), Website: <http://www.ultratech-labs.com>

File #: ICOM-383Q-SAR  
Dec 1, 2014

- All test results contained in this engineering test report are traceable to National Institute of Standards and Technology (NIST)

## 9.2. MEASUREMENT OF ELECTRICAL CHARACTERISTICS OF SIMULATED TISSUE

HP Dielectric Strength Probe System (open-ended coaxial transmission-line probe/sensor) was used.

### 9.2.1. Equipment set-up

The equipment consists of a probe connected to one port of a vector network analyzer. The probe is an open-ended coaxial line, as shown in Figure 9.2.1.1. Cylindrical coordinates ( $\rho$ ,  $\phi$ ,  $z$ ) are used where  $\rho$  is the radial distance from the axis,  $\phi$  is the angular displacement around the axis,  $z$  is the displacement along the axis,  $a$  is the inner conductor radius, and  $b$  is the outer conductor inner radius.

The sample holder is a non-metallic container that is large compared with the size of the probe immersed in it. A probe with an outer diameter  $b$  of 2 to 4 mm is suitable for the measurement of tissue-equivalent materials in the 300 MHz to 3 GHz frequency range. This probe size is commensurate with sample volumes of 50 cc or higher. Larger probes of up to 7 mm outer diameter  $b$  may be used with larger sample volumes. A flange is typically included to better represent the infinite ground-plane assumption used in admittance calculations.

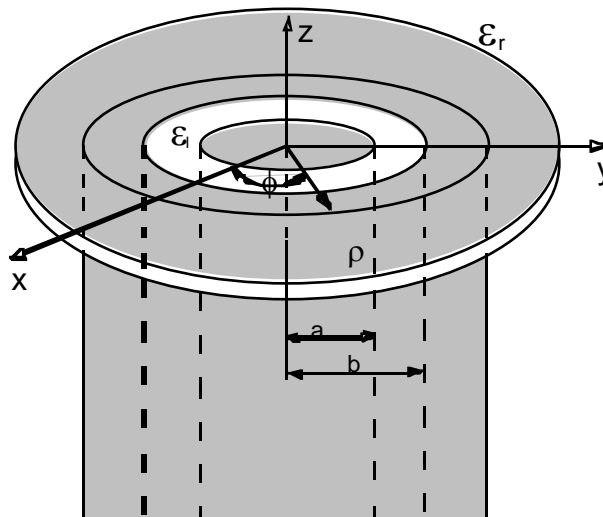


Figure 9.2.1. An open-ended coaxial probe with inner and outer radii  $a$  and  $b$ , respectively

The accuracy of the short-circuit measurement should be verified for each calibration at a number of frequencies. A short circuit can be achieved by gently pressing a piece of aluminum foil against the open end. For best electrical contact, the probe end should be flat and free of oxidation. Larger the sensors generally have better foil short-circuit repeatability. It is possible to obtain good contact with some commercial 4.6 mm probes using the metal-disk short-circuit supplied with the kit. For best repeatability, it may be necessary to press the disk by hand.

The network analyzer is configured to measure the magnitude and phase of the admittance. A one-port reflection calibration is performed at the plane of the probe by placing materials for which the reflection coefficient can be calculated in contact with the probe. Three standards are needed for the calibration, typically a short circuit, air, and de-ionized water at a well-defined temperature (other reference liquids such as methanol or ethanol may be used for calibration). The calibration is a key part of the measurement procedure, and it is therefore important to ensure that it has been performed correctly. It can be checked by re-measuring the short circuit to ensure that a reflection coefficient of  $\Gamma = -1.0$  (linear units) is obtained consistently.

## ULTRATECH GROUP OF LABS

3000 Bristol Circle, Oakville, Ontario, Canada L6H 6G4  
Tel. #: 905-829-1570, Fax. #: 905-829-8050, Email: [vic@ultratech-labs.com](mailto:vic@ultratech-labs.com), Website: <http://www.ultratech-labs.com>

File #: ICOM-383Q-SAR  
Dec 1, 2014

- All test results contained in this engineering test report are traceable to National Institute of Standards and Technology (NIST)

### **9.2.2. Measurement procedure**

- a) Configure and calibrate the network analyzer and probe system.
- b) Place the sample in a non-metallic container and immerse the probe. A fixture or clamp is recommended to stabilize the probe, mounted such that the probe face is at an angle with respect to the liquid surface to minimize trapped air bubbles beneath the flange.
- c) Measure the complex admittance with respect to the probe aperture.
- d) Compute the complex relative permittivity  $\epsilon_r = \epsilon'_r - j\sigma/\omega\epsilon_0$ .

---

### **ULTRATECH GROUP OF LABS**

3000 Bristol Circle, Oakville, Ontario, Canada L6H 6G4  
Tel. #: 905-829-1570, Fax. #: 905-829-8050, Email: [vic@ultratech-labs.com](mailto:vic@ultratech-labs.com), Website: <http://www.ultratech-labs.com>

**File #: ICOM-383Q-SAR**  
Dec 1, 2014

- All test results contained in this engineering test report are traceable to National Institute of Standards and Technology (NIST)

### 9.3. SIMULATED TISSUE MEASUREMENT RESULTS

<b>Tissue calibration type</b>	HP Dielectric Strength Probe System (M/N: 85070C)		
<b>Tissue calibration date</b> [MM/DD/YYYY]	11/2/2014	11/2/2014	
<b>Tissue calibrated by</b>	Max Kee	Max Kee	
<b>Room temperature</b> [°C]	20.7	20.7	
<b>Room humidity</b> [%]	36	36	
<b>Simulated tissue temperature</b> (°C)	20.1	20.1	
<b>Tissue calibration frequency</b> [MHz]	450	450	
<b>Tissue Type</b>	Muscle	Brain	
<b>Target conductivity</b> [S/m]	0.94	0.87	
<b>Target dielectric constant</b>	56.7	43.5	
<b>Composition (by weight)</b> [%]	DI Water (51.16 %) Sugar (46.78 %) Salt (1.49 %) HEC (0.13 %) Bactericide (0.44 %)	DI Water (49.8 %) Sugar (48.17 %) Salt (2.03 %) HEC (0.19 %) Bactericide (0.5 %)	
<b>Measured conductivity</b> [S/m]	0.90(-4.3%)	0.83(-4.8%)	
<b>Measured dielectric constant</b>	55.7(-1.8 %)	42.6(-2.2%)	
<b>Penetration depth (plane wave excitation)</b> [mm]	45.1		

#### 9.3.1. 450 MHz Tissue

	Frequency [MHz]	Meas. after 5min			DI Water at 20°C			Init. Meas.		
		$\epsilon'$	$\epsilon''$	$\sigma$ [S/m]	$\epsilon'$	$\epsilon''$	$\sigma$ [S/m]	$\epsilon'$	$\epsilon''$	$\sigma$ [S/m]
Head	415.000	43.8936	34.7574	0.80	80.0050	1.7714	0.04	44.1473	34.8412	0.80
	450.000	42.5588	33.0892	0.83	79.9836	1.8834	0.05	42.6681	33.1938	0.83
	485.000	41.3947	31.6399	0.85	80.0817	2.2272	0.06	41.4019	31.4127	0.85
Body	415.000	56.3657	37.6072	0.87	79.9404	1.8084	0.04	56.2592	37.5860	0.87
	450.000	55.6862	35.9368	0.90	79.9402	1.9503	0.05	55.5507	35.8304	0.90
	485.000	55.1224	34.3565	0.93	80.0030	2.1877	0.06	55.1127	34.6318	0.93

#### ULTRATECH GROUP OF LABS

3000 Bristol Circle, Oakville, Ontario, Canada L6H 6G4  
Tel. #: 905-829-1570, Fax. #: 905-829-8050, Email: [vic@ultratech-labs.com](mailto:vic@ultratech-labs.com), Website: <http://www.ultratech-labs.com>

**File #: ICOM-383Q-SAR**  
Dec 1, 2014

- All test results contained in this engineering test report are traceable to National Institute of Standards and Technology (NIST)

## **EXHIBIT 10. SAR MEASUREMENT UNCERTAINTY**

### **10.1. MEASUREMENT UNCERTAINTY EVALUATION FOR SAR TEST**

<b>Error Description</b>	<b>Uncertainty value</b>	<b>Prob. Dist.</b>	<b>Div.</b>	<b>(c<sub>i</sub>) 1g</b>	<b>(c<sub>i</sub>) 10g</b>	<b>Std. Unc. (1g)</b>	<b>Std. Unc. (10g)</b>	<b>(v<sub>i</sub>) v<sub>eff</sub></b>
<b>Measurement System</b>								
Probe Calibration	±5.5 %	N	1	1	1	±5.5 %	±5.5 %	∞
Axial Isotropy	±4.7 %	R	$\sqrt{3}$	0.7	0.7	±1.9 %	±1.9 %	∞
Hemispherical Isotropy	±9.6 %	R	$\sqrt{3}$	0.7	0.7	±3.9 %	±3.9 %	∞
Boundary Effects	±1.0 %	R	$\sqrt{3}$	1	1	±0.6 %	±0.6 %	∞
Linearity	±4.7 %	R	$\sqrt{3}$	1	1	±2.7 %	±2.7 %	∞
System Detection Limits	±1.0 %	R	$\sqrt{3}$	1	1	±0.6 %	±0.6 %	∞
Readout Electronics	±0.3 %	R	$\sqrt{3}$	1	1	±0.3 %	±0.3 %	∞
Response Time	±0.8 %	N	1	1	1	±0.5 %	±0.5 %	∞
Integration Time	±2.6 %	R	$\sqrt{3}$	1	1	±1.5 %	±1.5 %	∞
RF Ambient Noise	±3.0 %	R	$\sqrt{3}$	1	1	±1.7 %	±1.7 %	∞
RF Ambient Reflections	±3.0 %	R	$\sqrt{3}$	1	1	±1.7 %	±1.7 %	∞
Probe Positioner	±0.4 %	R	$\sqrt{3}$	1	1	±0.2 %	±0.2 %	∞
Probe Positioning	±2.9 %	R	$\sqrt{3}$	1	1	±1.7 %	±1.7 %	∞
Max. SAR Eval.	±1.0 %	R	$\sqrt{3}$	1	1	±0.6 %	±0.6 %	∞
<b>Test Sample Related</b>								
Device Positioning	±2.9 %	N	1	1	1	±2.9 %	±2.9 %	145
Device Holder	±3.6 %	N	1	1	1	±3.6 %	±3.6 %	5
Power Drift	±5.0 %	R	$\sqrt{3}$	1	1	±2.9 %	±2.9 %	∞
<b>Phantom and Setup</b>								
Phantom Uncertainty	±4.0 %	R	$\sqrt{3}$	1	1	±2.3 %	±2.3 %	∞
Liquid Conductivity (target)	±5.0 %	R	$\sqrt{3}$	0.64	0.43	±1.8 %	±1.2 %	∞
Liquid Conductivity (meas.)	±2.5 %	N	1	0.64	0.43	±1.6 %	±1.1 %	∞
Liquid Permittivity (target)	±5.0 %	R	$\sqrt{3}$	0.6	0.49	±1.7 %	±1.4 %	∞
Liquid Permittivity (meas.)	±2.5 %	N	1	0.6	0.49	±1.5 %	±1.2 %	∞
Combined Std. Uncertainty						±10.7 %	±10.5 %	387
<b>Expanded STD Uncertainty</b>						<b>±21.4 %</b>	<b>±21.0 %</b>	

#### **ULTRATECH GROUP OF LABS**

3000 Bristol Circle, Oakville, Ontario, Canada L6H 6G4  
Tel. #: 905-829-1570, Fax. #: 905-829-8050, Email: [vic@ultratech-labs.com](mailto:vic@ultratech-labs.com), Website: <http://www.ultratech-labs.com>

**File #: ICOM-383Q-SAR**  
Dec 1, 2014

- All test results contained in this engineering test report are traceable to National Institute of Standards and Technology (NIST)

## **EXHIBIT 11. ADDITIONAL TEST INSTRUMENTS LIST**

<b>Name</b>	<b>Type</b>	<b>Serial Number (SN)</b>	<b>Calibration Due Date</b>
<b>Signal Generator</b> (Rohde & Schwartz)	SMIQ06B	DE26709	Apr 02, 2015
<b>Dipole Antenna</b> (Speag)	D450V3	1063	Aug 14, 2015
<b>Dipole Antenna</b> (Speag)	D2450V2	821	Aug 15, 2015
<b>Dipole Antenna</b> (Speag)	D5GHzV2	1069	Aug 19, 2015
<b>SAR Probe</b> (Speag)	EX3DV4	3673	Aug 19, 2015
<b>SARProbe</b> (Speag)	ES3DV3	3208	March 13, 2015
<b>Power Meter</b> (HP)	HP 438A	3008A06729	Apr 10, 2015
<b>Directional Coupler</b> (narda)	Model 3020A	35482	Cal on use
<b>Network Analyzer</b> (HP)	8753D	3410A06430	Feb 11, 2015
<b>Wide Band Amplifier</b> (Instrument for Industry)	Model 5300	-----	N/A

## **EXHIBIT 12. SAR MEASUREMENT DATA**

See Appendix 1

## **EXHIBIT 13. SPEAG DASY 5.2 CALIBRATION CERTIFICATES**

See Appendix 2.

## **EXHIBIT 14. BODY WORN ACCESSORIES**

See Appendix 3.

---

### **ULTRATECH GROUP OF LABS**

3000 Bristol Circle, Oakville, Ontario, Canada L6H 6G4  
Tel. #: 905-829-1570, Fax. #: 905-829-8050, Email: [vic@ultratech-labs.com](mailto:vic@ultratech-labs.com), Website: <http://www.ultratech-labs.com>

**File #: ICOM-383Q-SAR**  
Dec 1, 2014

- All test results contained in this engineering test report are traceable to National Institute of Standards and Technology (NIST)