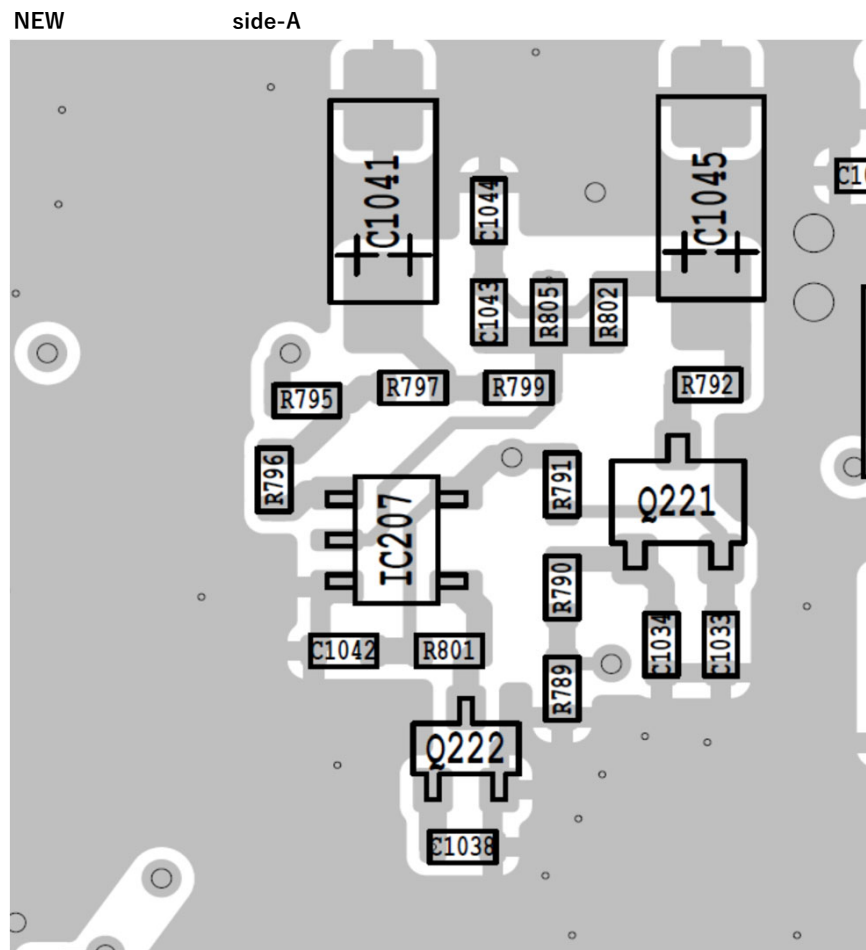
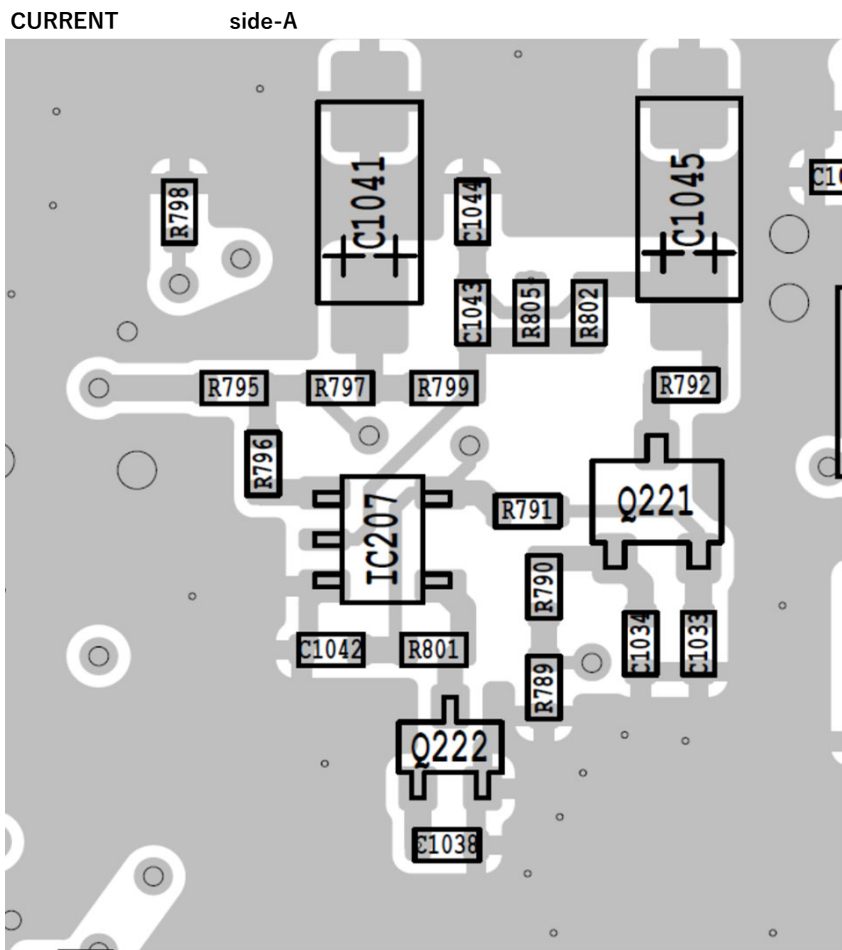
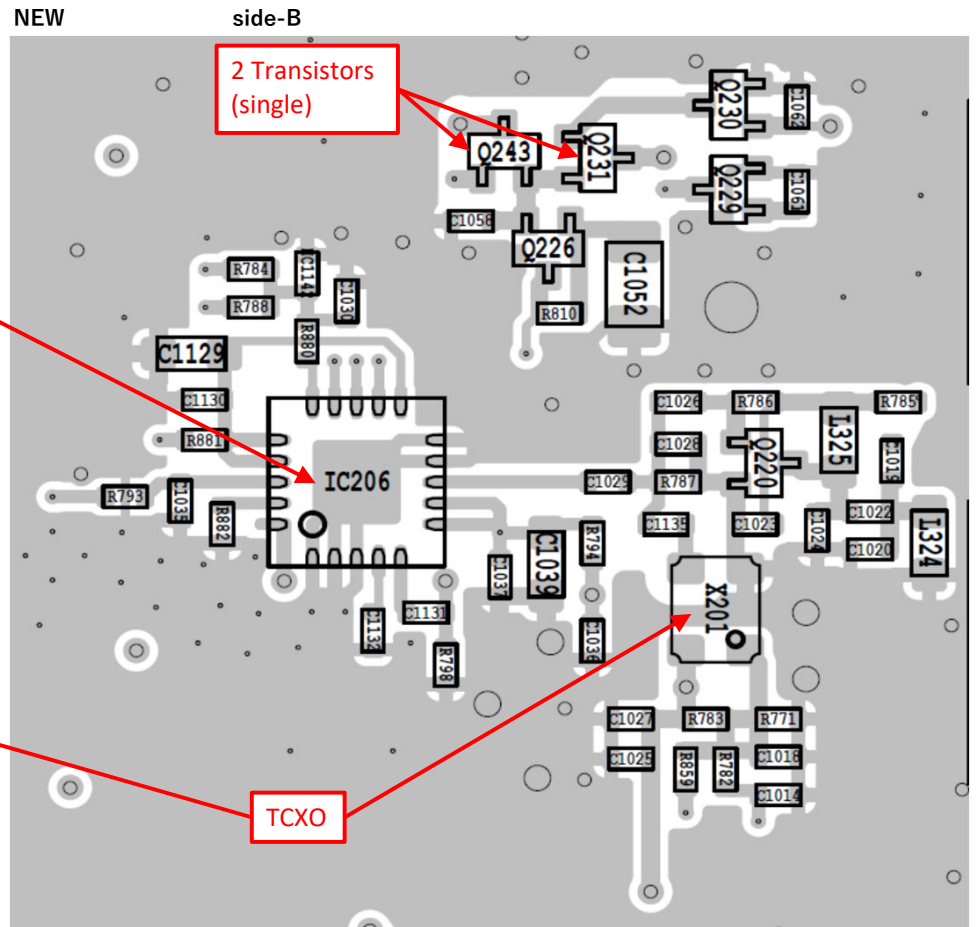
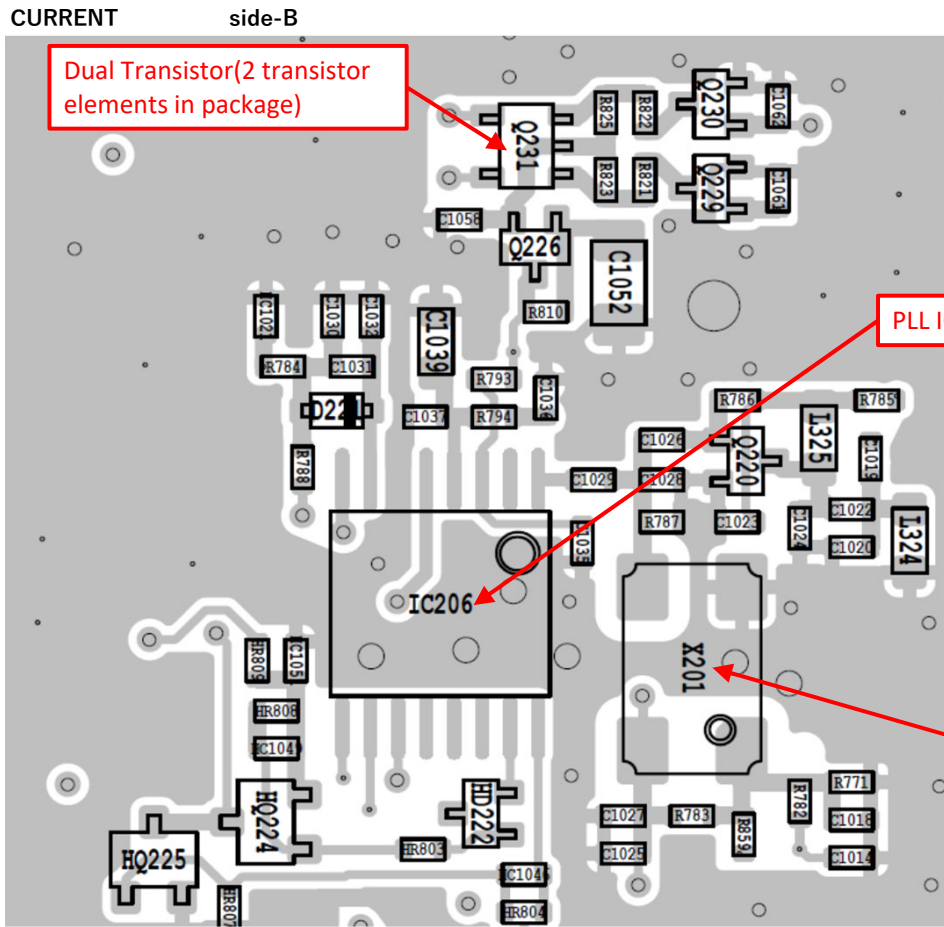


1. RVCO PLL and TCXO Circuit change

Comment : Replacement of the discontinued PLL IC(IC206).

Replacement of the discontinued TCXO(X201).

Replacement of the discontinued Dual Transistor(Q231, 2 transistor elements in package) to 2 Transistors(single, Q231, Q243).



1. RVCO PLL and TCXO Circuit change

Parts List

CURRENT		NEW	
Ref	Parts name	Ref	Parts name
C1019	3P C1005 CH B	C1019	3P 0402-RF C0G B
C1022	4P C1005 CH B	C1022	4P 0402-RF C0G B
C1026	10P 0402 C0G C	C1026	10P 0402-RF C0G G
C1028	10P 0402 C0G C	C1028	10P 0402-RF C0G G
C1030	0.1 0402 10V X7R K	C1030	1 CL05 16V X5R K
C1031	47P 0402 C0G J		
C1032	470P 0402 X7R K		
C1039	0.22 C1608 10V B	C1039	1 CL10 25V X7R K
C1041	0.22 35V F92 M A	C1041	0.22 35V 267M M A
C1045	2.2 16V F93 M A	C1045	2.2 16V 267E M A
C1052	10 GRM21B 16V B	C1052	10 CL21 25V X5R K
		C1129	1 CL10 25V X7R K
		C1130	470P 0402 X7R K
		C1131	0.001 0402 X7R K
		C1132	100P 0402 C0G J
		C1135	0.001 0402 X7R K
D221	L1SS400		
IC206	MB15A02PFV1-G-BND-ERE1	IC206	ADF4110BCPZ
Q222	LDTC144EE	Q222	DTC144EE
Q229	LDTC144EE	Q229	DTC144EE
Q230	LDTC144EE	Q230	DTC144EE
Q231	DMA501010	Q231	DTA014EEB
		Q243	DTA014EEB
R771	820K RMC1/16S-J	R771	1M RMC1/16S-J
R783	1M RMC1/16S-J	R783	680K RMC1/16S-J
R784	10K RMC1/16S-J	R784	100 RMC1/16S-J
R788	22K RMC1/16S-J	R788	10K RMC1/16S-J
R798	2.2M RMC1/16S-J	R798	47 RMC1/16S-J
R821	1K RMC1/16S-J		
R822	1K RMC1/16S-J		
R823	47K RMC1/16S-J		
R825	47K RMC1/16S-J		
		R880	1.2K RMC1/16S-J
		R881	100 RMC1/16S-J
		R882	3.9K RR0510
X201	CR-875A	X201	CR-996A

2. LVCO PLL and TCXO Circuit change

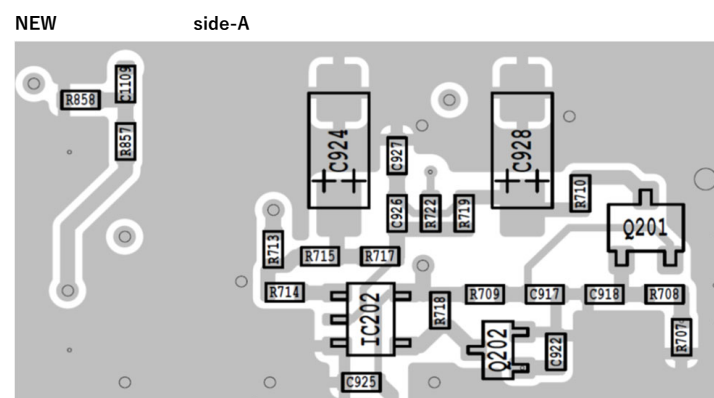
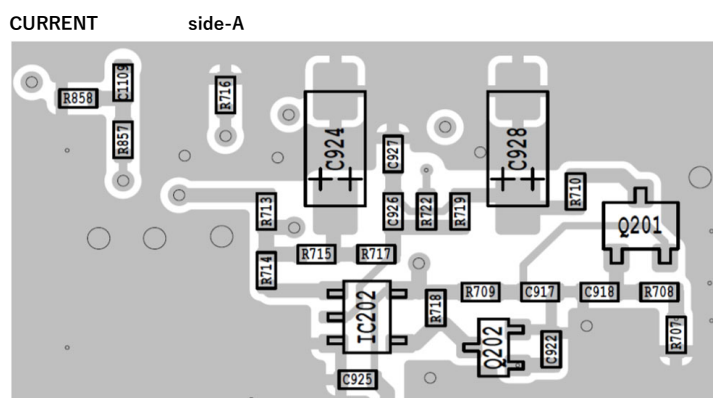
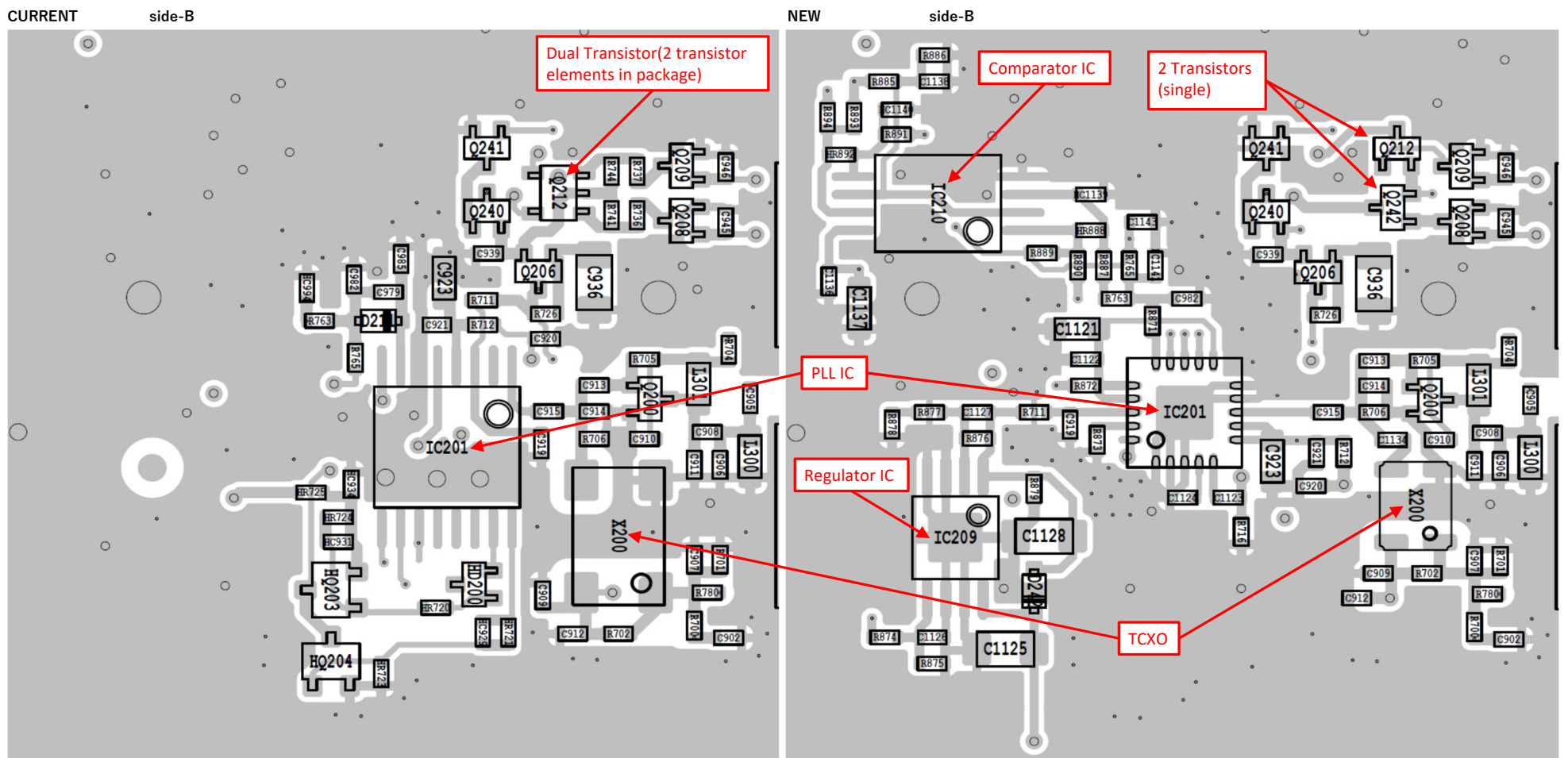
Comment : Replacement of the discontinued PLL IC(IC201).

Replacement of the discontinued TCXO(X200).

Added the Regulator IC(IC209) for PLL IC(IC201) charge pump power supply .

Added the Comparator IC(IC210) used to detect PLL locked.

Replacement of the discontinued Dual Transistor(Q212, 2 transistor elements in package) to 2 Transistors(single, Q212, Q242).



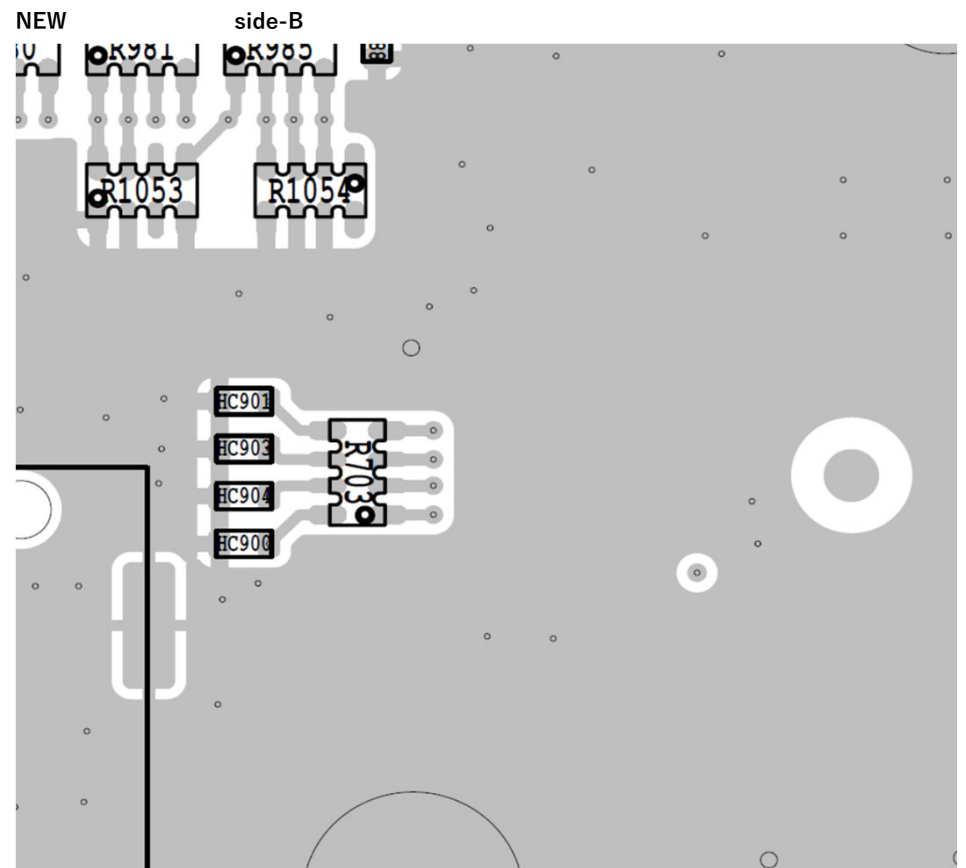
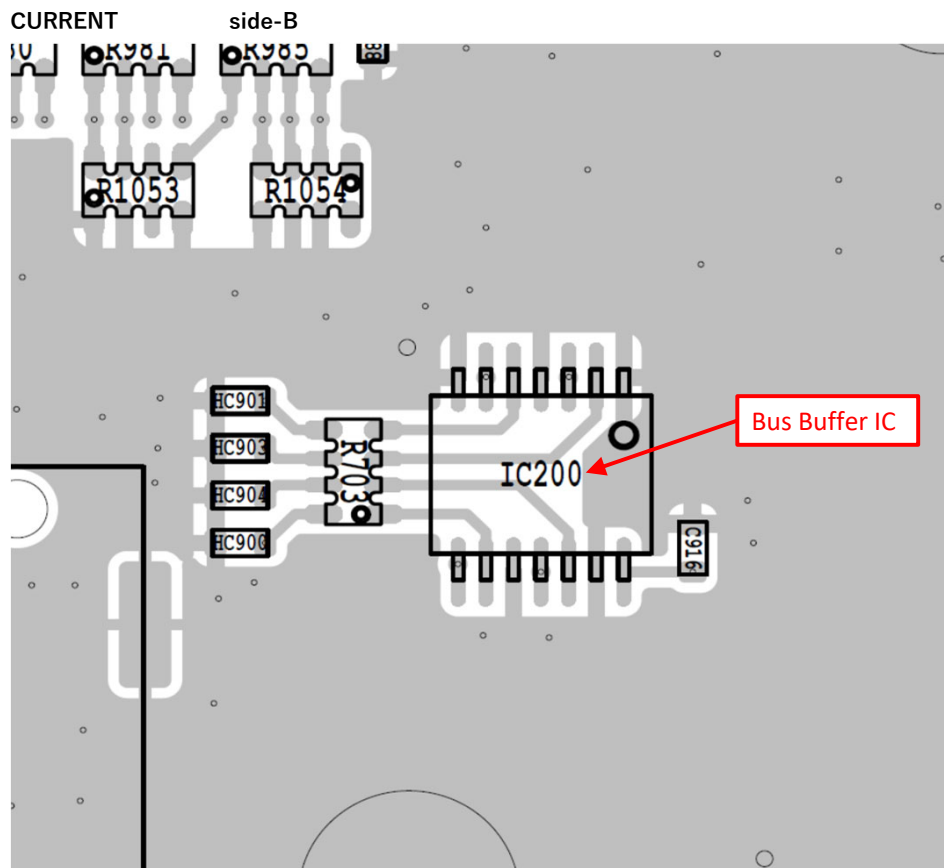
2. LVCO PLL and TCXO Circuit change

Parts List

CURRENT		NEW	
Ref	Parts name	Ref	Parts name
C905	3P C1005 CH B	C905	3P 0402-RF C0G B
C908	4P C1005 CH B	C908	4P 0402-RF C0G B
C913	10P 0402 C0G C	C913	10P 0402-RF C0G G
C914	10P 0402 C0G C	C914	10P 0402-RF C0G G
C923	0.22 C1608 10V B	C923	1 CL10 25V X7R K
C924	0.22 35V F92 M A	C924	0.22 35V 267M M A
C928	2.2 16V F93 M A	C928	2.2 16V 267E M A
C936	10 GRM21B 16V B	C936	10 CL21 25V X5R K
C979	47P 0402 C0G J		
C982	0.1 0402 10V X7R K	C982	1 CL05 16V X5R K
C985	470P 0402 X7R K		
		C1121	1 CL10 25V X7R K
		C1122	470P 0402 X7R K
		C1123	0.001 0402 X7R K
		C1124	100P 0402 C0G J
		C1125	10 GRM21B 16V B
		C1126	0.001 0402 X7R K
		C1127	0.01 0402 25V X7R K
		C1128	10 GRM21B 16V B
		C1134	0.001 0402 X7R K
		C1136	0.001 0402 X7R K
		C1137	0.1 0603 25V X7R K
		C1138	0.1 0402 10V X7R K
		C1143	0.001 0402 X7R K
D211	L1SS400		
		D242	1SS400 <JSCJ>
IC201	MB15A02PFV1-G-BND-ERE1	IC201	ADF4110BCPZ
		IC209	TPS7A4101DGNR
		IC210	NJM2903V
Q202	LDTC144EE	Q202	DTC144EE
Q208	LDTC144EE	Q208	DTC144EE
Q209	LDTC144EE	Q209	DTC144EE
Q212	DMA501010	Q212	DTA014EEB
Q241	LDTC144EE	Q241	DTC144EE
		Q242	DTA014EEB
R701	680K RMC1/16S-J	R701	1M RMC1/16S-J
R702	1.5M RMC1/16S-J	R702	680K RMC1/16S-J
R716	2.2M RMC1/16S-J	R716	47 RMC1/16S-J
R736	1K RMC1/16S-J		
R737	1K RMC1/16S-J		
R741	47K RMC1/16S-J		
R744	47K RMC1/16S-J		
R763	10K RMC1/16S-J	R763	100 RMC1/16S-J
R765	22K RMC1/16S-J	R765	10K RMC1/16S-J
R780	10K RMC1/16S-J	R780	33K RMC1/16S-J
		R871	1.2K RMC1/16S-J
		R872	100 RMC1/16S-J
		R873	3.9K RR0510
		R874	1K RMC1/16S-J
		R875	22K RMC1/16S-J
		R876	39K RR0510
		R877	8.2K RR0510
		R878	1.5K RR0510
		R879	1.8K RMC1/16S-J
		R885	10K RMC1/16S-J
		R886	33K RMC1/16S-J
		R887	RMC1/16S-JPW
		R889	22K RMC1/16S-J
		R890	100 RMC1/16S-J
		R891	RMC1/16S-JPW
		R893	22K RMC1/16S-J
		R894	100 RMC1/16S-J
X200	CR-833A	X200	CR-994-1

3. Bus Buffer Circuit change

Comment : Removal of the Bus Buffer IC(IC200) due to replacement of the discontinued PLL ICs(IC201, IC206).



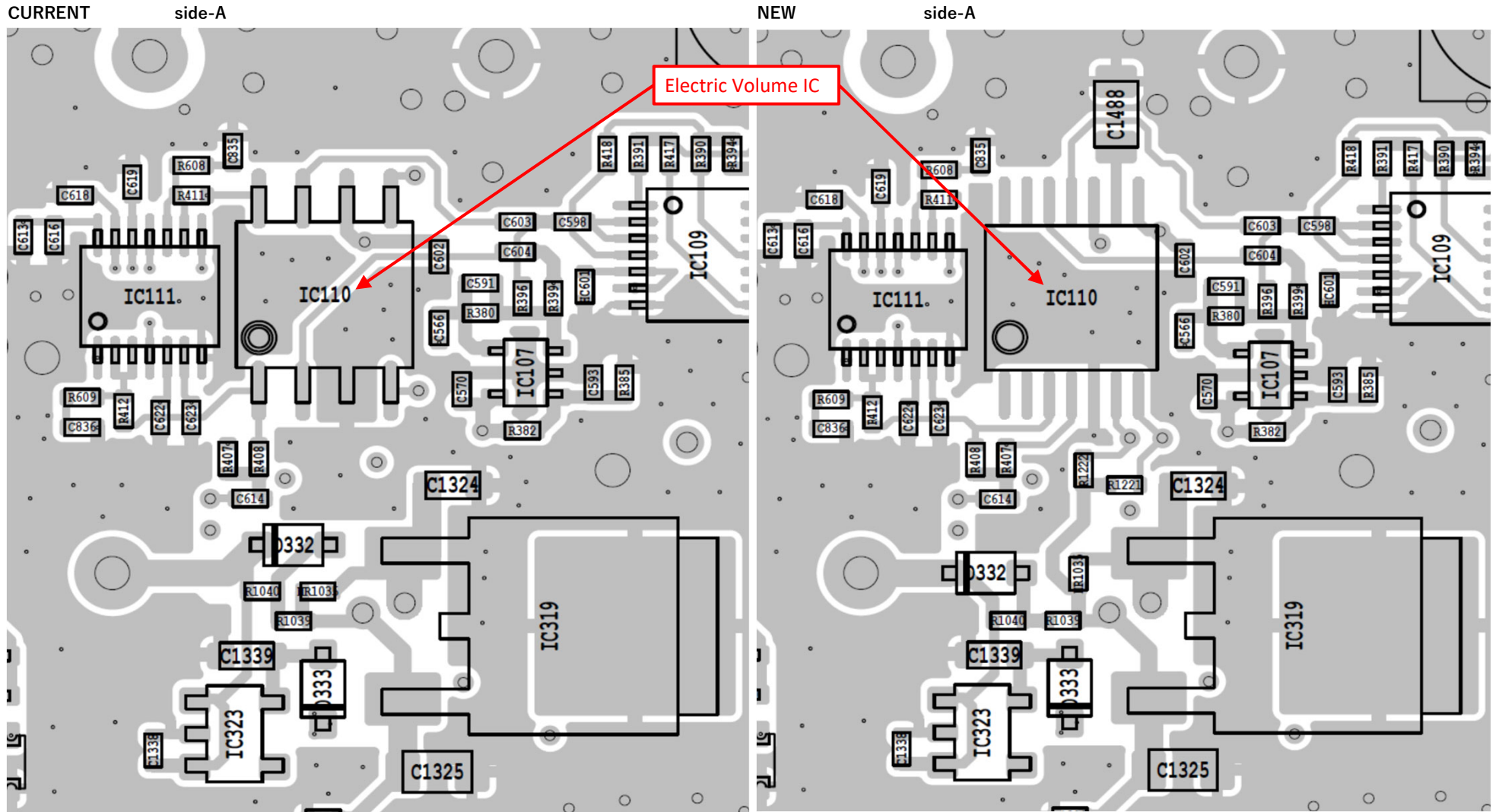
3. Bus Buffer Circuit change

Parts List

CURRENT		NEW	
Ref	Parts name	Ref	Parts name
C916	0.1 0402 10V X7R K		
IC200	TC74VHCT125AFK		

4. Electric Volume Circuit change

Comment : Replacement of the discontinued Electric Volume IC(IC110).



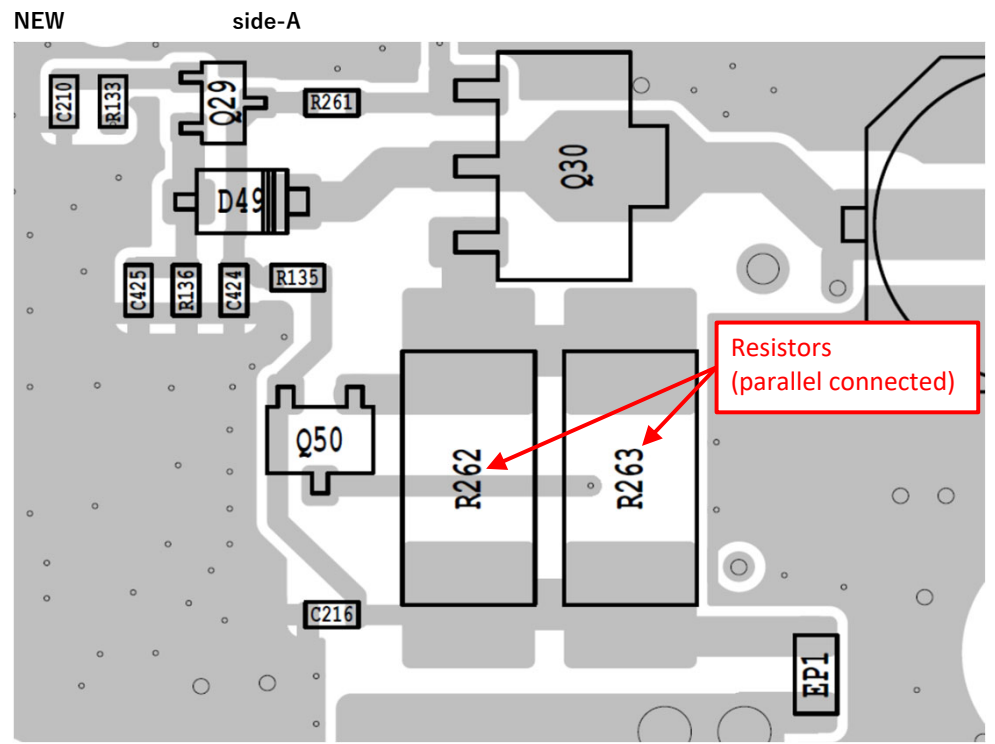
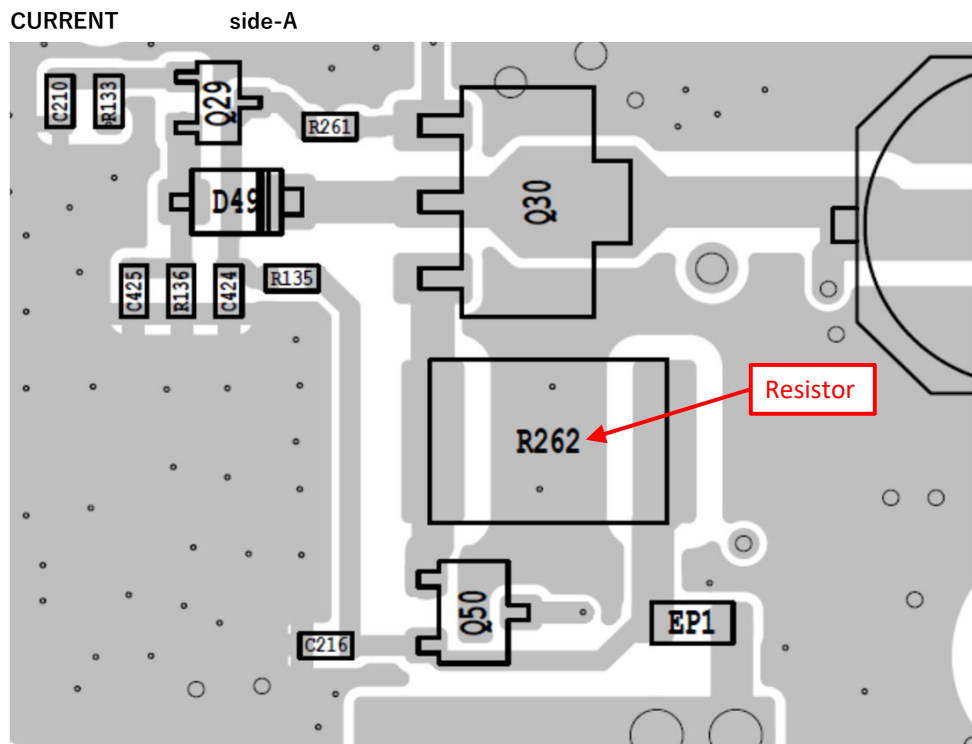
4. Electric Volume Circuit change

Parts List

CURRENT		NEW	
Ref	Parts name	Ref	Parts name
		C1488	10 GRM21B 16V B
IC110	M61545AFP	IC110	NJU72341V-TE2
		R1221	100K RMC1/16S-J
		R1222	4.7K RMC1/16S-J

5. FAN Control Circuit change

Comment : Replacement of the discontinued Resistor(CURRENT(R262), NEW(R262, R263)).



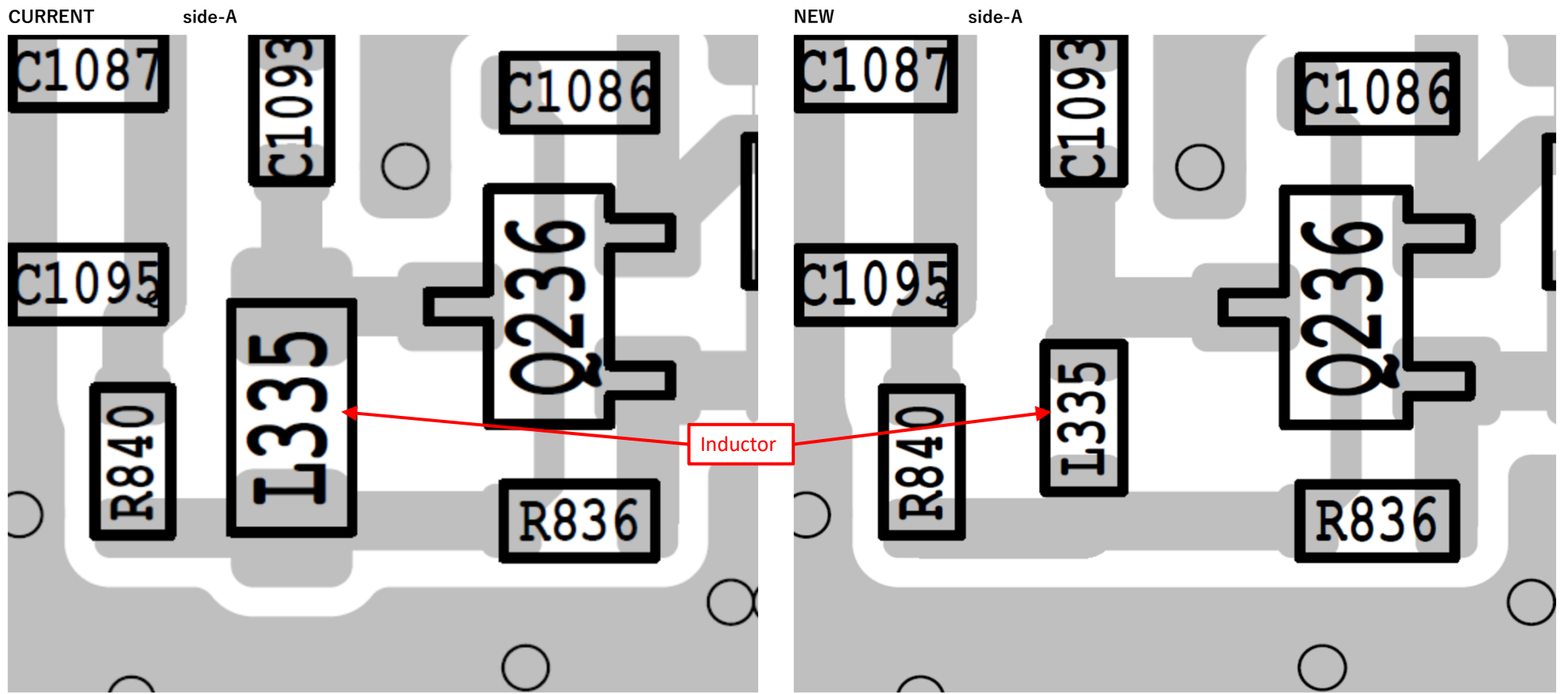
5. FAN Control Circuit change

Parts List

CURRENT		NEW	
Ref	Parts name	Ref	Parts name
R262	1.5 ERJ12	R262	3.3 RMC1/2-J
		R263	3.3 RMC1/2-J

6. RVCO Buffer Circuit change

Comment : Replacement of the discontinued Inductor(L335).



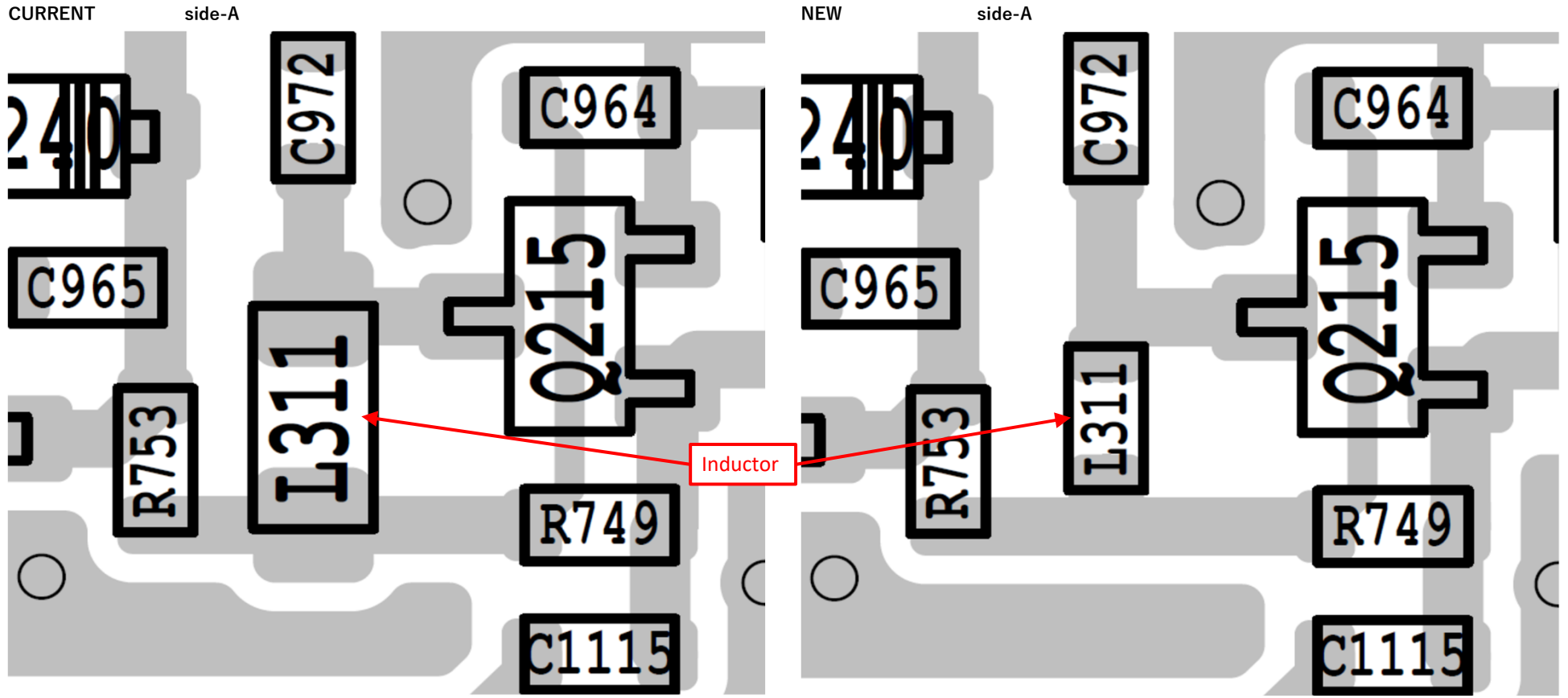
6. RVCO Buffer Circuit change

Parts List

CURRENT		NEW	
Ref	Parts name	Ref	Parts name
L335	ELJRE R15JFA 0.15U	L335	MLK1005S R22JT 0.22U

7. LVCO Buffer Circuit change

Comment : Replacement of the discontinued Inductor(L311).



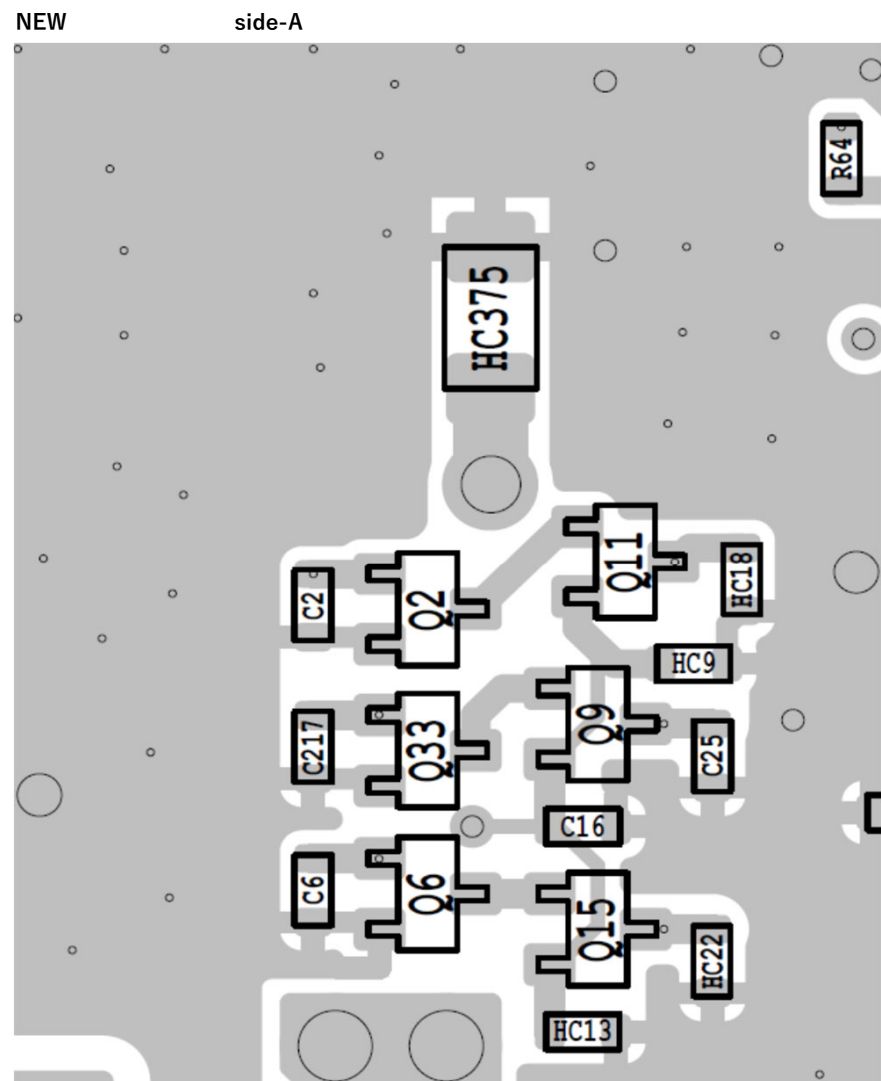
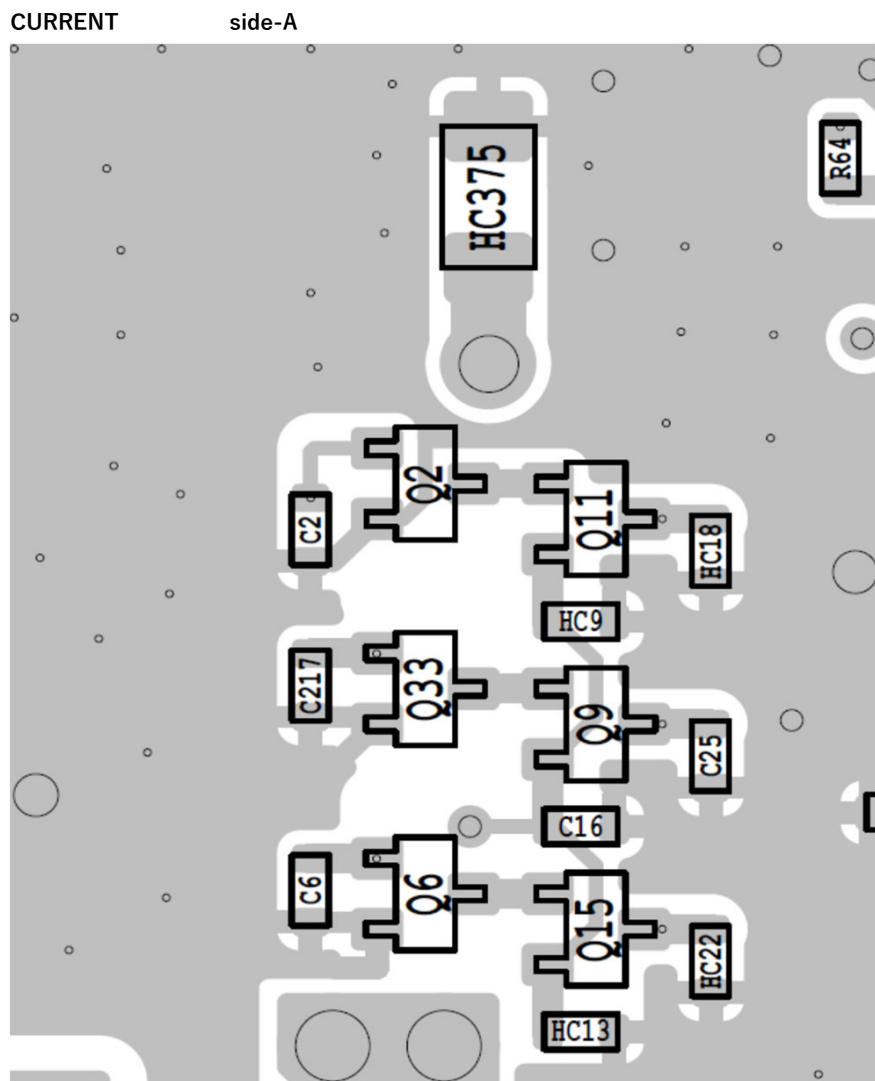
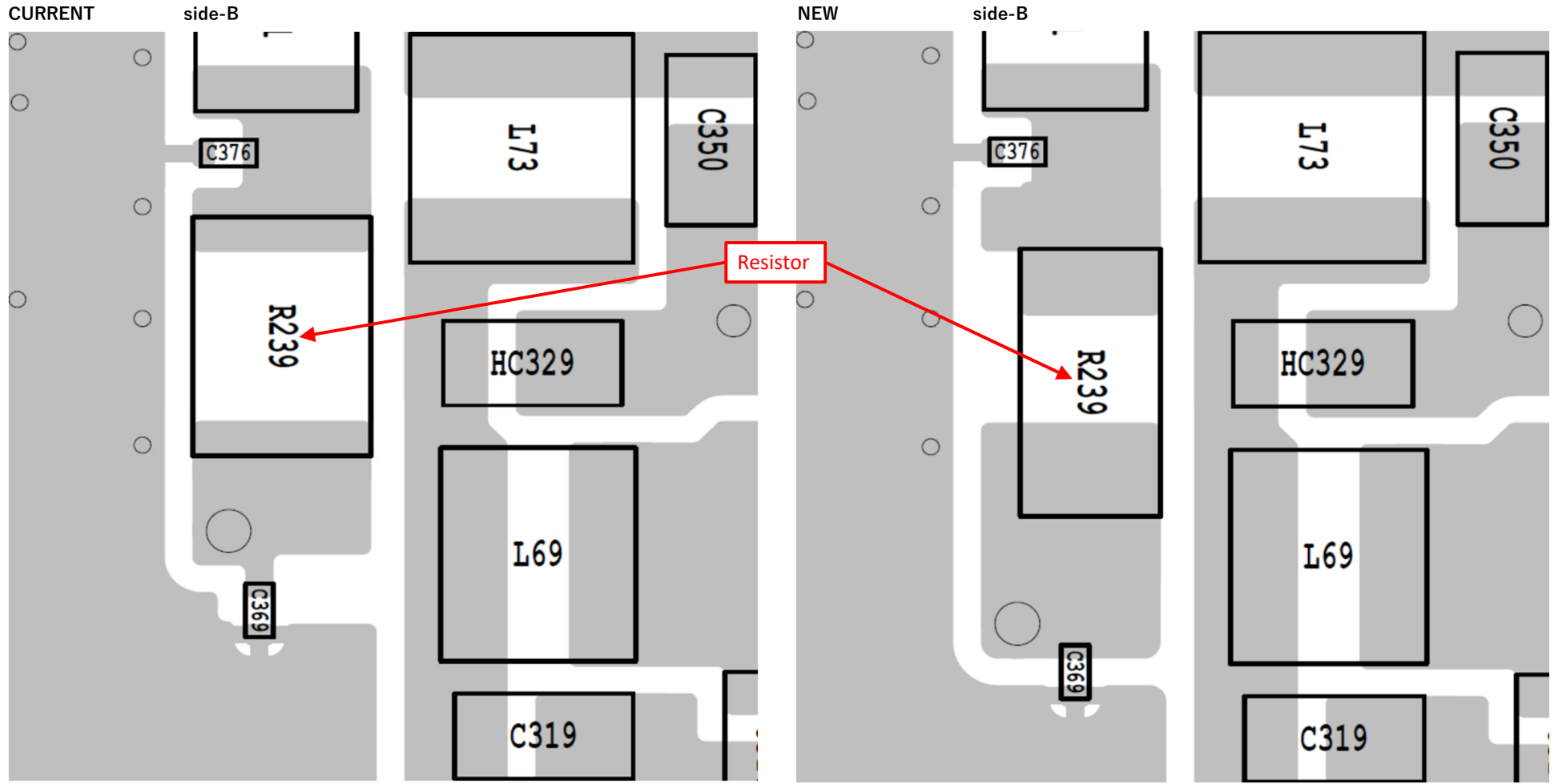
7. LVCO Buffer Circuit change

Parts List

CURRENT		NEW	
Ref	Parts name	Ref	Parts name
L311	ELJRE R22GFA 0.22U	L311	MLK1005S R22JT 0.22U

8. UHF TX/RX Switch Circuit change

Comment : Replacement of the discontinued Resistor(R239).



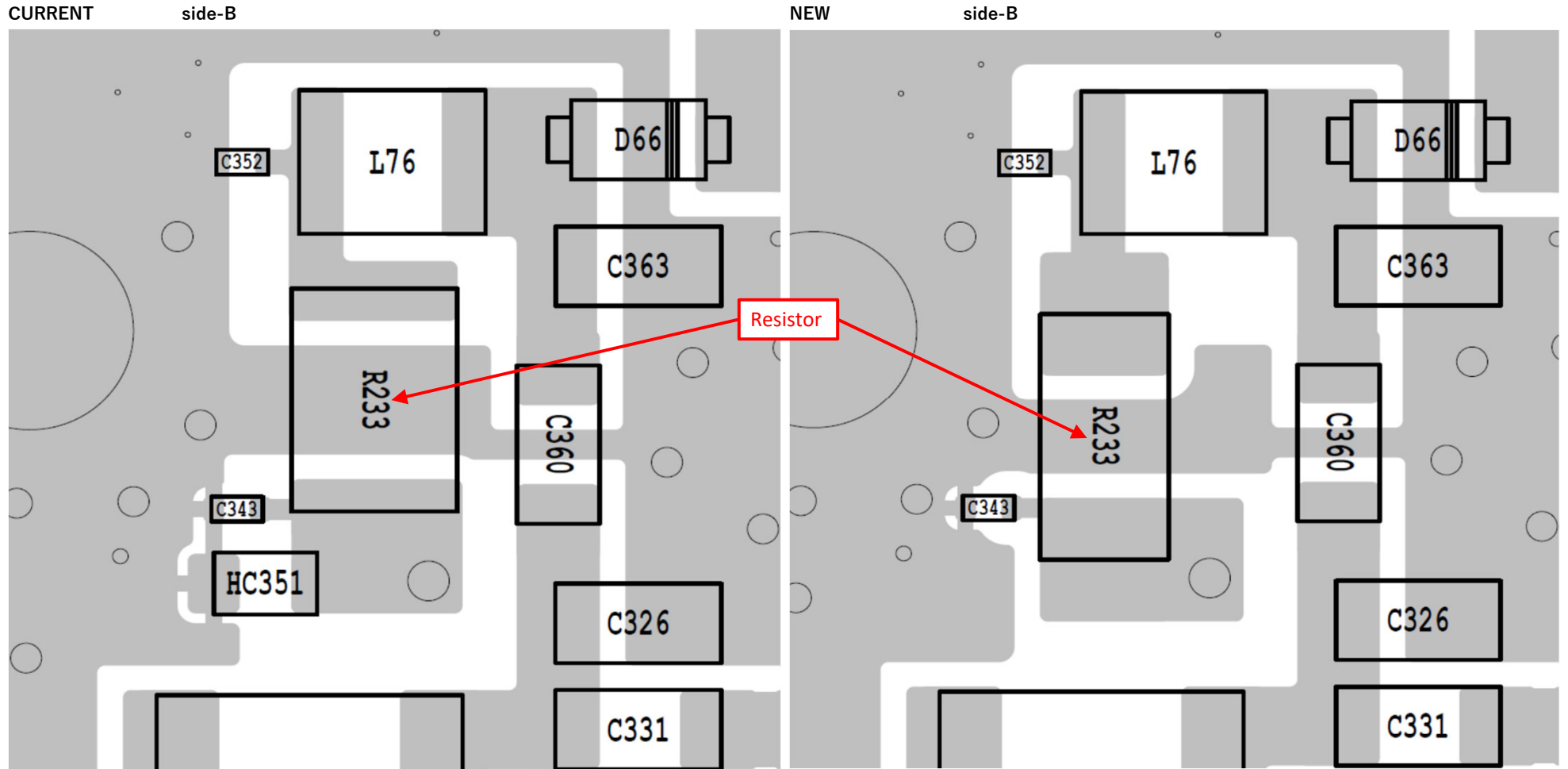
8. UHF TX/RX Swich Circuit change

Parts List

CURRENT		NEW	
Ref	Parts name	Ref	Parts name
R239	100 ERJ12	R239	100 RMC1/2-J

9. VHF TX/RX Switch Circuit change

Comment : Replacement of the discontinued Resistor(R233).



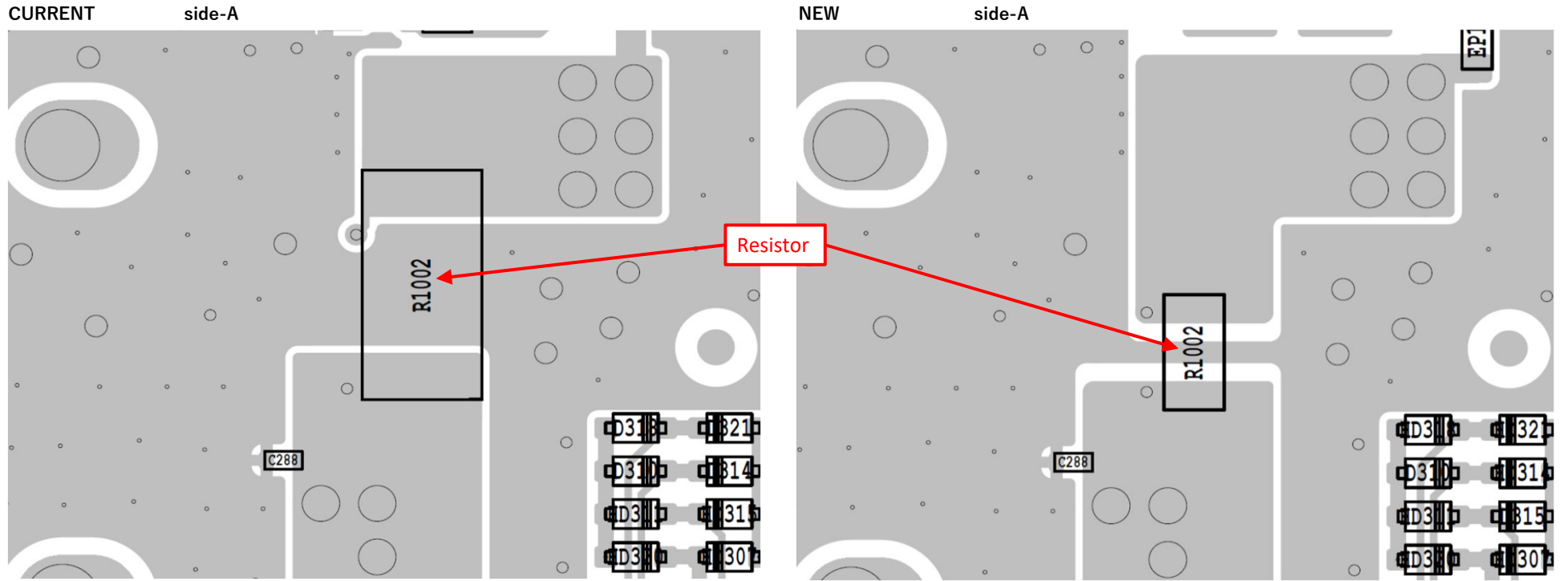
9. VHF TX/RX Swich Circuit change

Parts List

CURRENT		NEW	
Ref	Parts name	Ref	Parts name
R233	100 ERJ12	R233	100 RMC1/2-J

10. Current Detection Circuit change

Comment : Replacement of the discontinued Resistor(R1002).



10. Current Detection Circuit change

Parts List

CURRENT		NEW	
Ref	Parts name	Ref	Parts name
R1002	0.003 ERJM1WSF	R1002	0.003 TLR2BW F