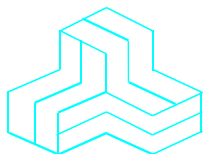


# ENGINEERING TEST REPORT



## VHF MARINE TRANSCEIVER Model No.: IC-M36

### Tested For

**ICOM Incorporated**  
1-1-32, Kamiminami, Hirano-ku  
Osaka,  
Japan, 547-0003

### In Accordance With

**SAR (Specific Absorption Rate) Requirements  
using guidelines established in IEEE C95.1-1992,  
FCC OET Bulletin 65 (Supplement C),  
Industry Canada RSS-102(Issue 2) and  
ACA Radio communications (Electromagnetic Radiation – Human Exposure)  
Amendment Standard 2000 (No. 1)**

### UltraTech's File No.: ICOM-189-SAR

This Test report is Issued under the Authority of  
Tri M. Luu, Professional Engineer,  
Vice President of Engineering  
UltraTech Group of Labs



Date: October 30, 2008

Report Prepared by:  
JaeWook Choi

Tested by:  
Steven Lu

Issued Date:  
October 30, 2008  
Last revised Date:  
Jan 04, 2009

Test Dates:  
October 20, 2008

*The results in this Test Report apply only to the sample(s) tested, which has been randomly selected.*

## UltraTech

3000 Bristol Circle, Oakville, Ontario, Canada, L6H 6G4  
Telephone (905) 829-1570 Facsimile (905) 829-8050  
Website: [www.ultratech-labs.com](http://www.ultratech-labs.com) Email: [vic@ultratech-labs.com](mailto:vic@ultratech-labs.com)

## TABLE OF CONTENTS

<b>EXHIBIT 1. INTRODUCTION</b> .....	<b>4</b>
1.1. SCOPE .....	4
1.2. REFERENCES.....	4
<b>EXHIBIT 2. PERFORMANCE ASSESSMENT</b> .....	<b>5</b>
2.1. CLIENT AND MANUFACTURER INFORMATION .....	5
2.2. DEVICE UNDER TEST (D.U.T.) DESCRIPTION.....	5
2.3. LIST OF D.U.T.'S ACCESSORIES:.....	6
2.4. SPECIAL CHANGES ON THE D.U.T.'S HARDWARE/SOFTWARE FOR TESTING PURPOSES .....	6
2.5. ANCILLARY EQUIPMENT .....	6
2.6. GENERAL TEST CONFIGURATIONS .....	6
2.6.1. <i>Equipment Configuration</i> .....	6
2.6.2. <i>Exercising Equipment</i> .....	6
2.7. SPECIFIC OPERATING CONDITIONS.....	6
2.8. BLOCK DIAGRAM OF TEST SETUP .....	7
<b>EXHIBIT 3. SUMMARY OF TEST RESULTS</b> .....	<b>8</b>
3.1. LOCATION OF TESTS .....	8
3.2. APPLICABILITY & SUMMARY OF SAR RESULTS.....	8
<b>EXHIBIT 4. MEASUREMENTS, EXAMINATIONS &amp; TEST DATA</b> .....	<b>9</b>
4.1. TEST SETUP .....	9
4.2. PHOTOGRAPH OF D.U.T .....	10
4.3. PHOTOGRAPHS OF D.U.T. POSITION .....	11
4.3.1. <i>Head Configuration</i> .....	11
4.3.1.1. Head-front PTT.....	11
4.3.2. <i>Body Configuration</i> .....	12
4.3.2.1. Body-worn; Back side of EUT in parallel to the phantom with the belt-clip in contact, Belt-clip (M/N: MB-109) and Speaker-microphone (M/N: HM-165).....	12
4.4. MAXIMUM PEAK SPATIAL-AVERAGE SAR.....	13
4.4.1. <i>Maximum Peak Spatial-average SAR Data</i> .....	13
4.4.2. <i>Maximum Peak Spatial-Average SAR Location</i> .....	13
4.5. SAR MEASUREMENT DATA .....	14
4.5.1. <i>Head Configuration Result</i> .....	14
4.5.1.1. Head-front; PTT .....	14
4.5.2. <i>Body Configuration Result</i> .....	14
4.5.2.1. Body-worn; Back-side in parallel to the phantom and the belt clip in contact.....	14
4.5.3. <i>Power Measurement</i> .....	15
4.5.4. <i>SAR Drift</i> .....	15
<b>EXHIBIT 5. SAR SYSTEM CONFIGURATION &amp; TEST METHODOLOGY</b> .....	<b>16</b>
5.1. MEASUREMENT SYSTEM SPECIFICATIONS.....	16
5.2. TEST PROCEDURES .....	16
5.3. PHANTOM .....	16
5.4. SIMULATED TISSUE .....	17
5.4.1. <i>Preparation</i> .....	18
5.5. MEASUREMENT OF ELECTRICAL CHARACTERISTICS OF SIMULATED TISSUE.....	18

5.5.1.	<i>Slotted Coaxial Waveguide</i> .....	18
5.5.1.1.	Equipment set-up.....	18
5.5.1.2.	Measurement procedure.....	19
5.5.2.	<i>HP Dielectric Strength Probe System (open-ended coaxial transmission-line probe/sensor)</i> .....	20
5.5.2.1.	Equipment set-up.....	20
5.5.2.2.	Measurement procedure.....	21
5.6.	SYSTEM CALIBRATION.....	22
5.6.1.	<i>Probe linearity</i> .....	22
5.6.2.	<i>Isotropy Calibration</i> .....	22
5.6.3.	<i>Method</i> .....	22
5.6.3.1.	Measurement procedure.....	23
5.6.3.2.	Definition of Amplifier Settings.....	24
5.6.4.	<i>Thermal Transfer Calibration</i> .....	25
5.6.4.1.	Measurement procedure.....	25
5.6.4.2.	Determination of Conversion Factor ( $\gamma$ ) in the simulated tissue.....	27
5.6.5.	<i>Data Acquisition Methodology</i> .....	29
5.6.5.1.	E-Field Measurement.....	29
5.6.5.2.	Sensitivity( $\zeta$ ) of probe in the simulated tissue.....	29
5.6.5.3.	SAR Measurement.....	30
5.6.5.4.	Data Extrapolation and boundary effect.....	33
5.6.6.	<i>Determining the Heat Capacity of Simulated Tissue</i> .....	34
5.6.6.1.	Instruments and Materials.....	34
5.6.6.2.	Method.....	34
5.6.6.3.	Rationale.....	35
5.7.	SAR MEASUREMENT SYSTEM VERIFICATION.....	36
5.7.1.	<i>Standard Source</i> .....	36
5.7.2.	<i>Standard Source Input Power Measurement</i> .....	37
5.7.3.	<i>System Validation Procedure</i> .....	38
5.8.	POWER MEASUREMENT.....	38
5.9.	POSITIONING OF D.U.T.....	39
5.10.	SAR MEASUREMENT UNCERTAINTY.....	41
5.10.1.	<i>Measurement Uncertainty</i> .....	42
5.10.1.1.	Measurement Uncertainty evaluation for handset SAR test.....	42
5.10.1.2.	Measurement Uncertainty for System Performance Check.....	43
5.11.	RECOMMENDED CAUTION STATEMENTS TO BE INCLUDED IN USERS MANUAL.....	44
<b>EXHIBIT 6.</b>	<b>SAR MEASUREMENT</b> .....	<b>45</b>
6.1.	HEAD CONFIGURATION.....	45
6.1.1.	<i>Head-front; PTT</i> .....	45
6.1.1.1.	Li-Ion battery pack (M/N: BP-252); #01.....	46
6.2.	BODY CONFIGURATION.....	50
6.2.1.	<i>Body-worn; Back-side in parallel to the phantom and the belt clip in contact</i> .....	50
6.2.1.1.	Li-Ion battery pack (M/N: BP-252), Belt Clip (M/N: MB-109), Speaker-microphone (M/N: HS-165); 156.025MHz; #03...51	51
<b>EXHIBIT 7.</b>	<b>TISSUE DIELECTRIC PARAMETER CALIBRATION</b> .....	<b>55</b>
7.1.	150 MHZ BRAIN TISSUE.....	56
7.2.	150 MHZ MUSCLE TISSUE.....	56
7.3.	300 MHZ BRAIN TISSUE.....	56
<b>EXHIBIT 8.</b>	<b>SAR SYSTEM CALIBRATION</b> .....	<b>57</b>
8.1.	GENERAL INFORMATION OF THE PROBE.....	57
8.2.	PROBE LINEARITY AND DYNAMIC RANGE.....	57

**ULTRATECH GROUP OF LABS**

**File #: ICOM-189-SAR**  
**October 30, 2008**

3000 Bristol Circle, Oakville, Ontario, Canada L6H 6G4  
Tel. #: 905-829-1570, Fax. #: 905-829-8050, Email: vic@ultratech-labs.com, Website: http://www.ultratech-labs.com

- Assessed by ITI (UK) Competent Body, NVLAP (USA) Accreditation Body & ACA/AUSTEL (Australia), VCCI (Japan)
- Accredited by Industry Canada (Canada) under ACC-LAB (Europe/Canada MRA and APEC/Canada MRA)
- Recognized/Listed by FCC (USA)
- All test results contained in this engineering test report are traceable to National Institute of Standards and Technology (NIST)

8.2.1.	<i>Diode Compression Potential</i> .....	57
8.2.2.	<i>Channel 1</i> .....	58
8.2.3.	<i>Channel 2</i> .....	59
8.2.4.	<i>Channel 3</i> .....	60
8.3.	PROBE ISOTROPY CALIBRATION.....	61
8.3.1.	<i>Calibration Setup</i> .....	61
8.3.2.	<i>Amplifier Settings</i> .....	61
8.3.2.1.	Isotropy calibration at 150 MHz .....	61
8.3.2.2.	Isotropy calibration at 300 MHz .....	62
8.3.3.	<i>Isotropic response at 150 MHz</i> .....	63
8.3.4.	<i>Isotropic response at 300 MHz</i> .....	65
8.4.	PROBE THERMAL TRANSFER CALIBRATION .....	67
8.4.1.	<i>Calibration Setup</i> .....	67
8.4.1.1.	Setup for 150 MHz .....	67
8.4.1.2.	Setup for 300 MHz .....	67
8.4.2.	<i>Conversion Factor</i> .....	68
8.4.2.1.	Thermal transfer calibration at 150 MHz for simulated brain tissue.....	68
8.4.2.2.	Thermal transfer calibration at 150 MHz for simulated muscle tissue.....	70
8.4.2.3.	Thermal transfer calibration at 300 MHz for simulated Brian tissue .....	72
<b>EXHIBIT 9.</b>	<b>SAR SYSTEM VERIFICATION USING DIPOLE REFERENCE</b> .....	<b>74</b>
9.1.1.	<i>At 300 MHz</i> .....	74
9.2.	SIMULATED TISSUE.....	75
9.2.1.	<i>Verification Result</i> .....	75
9.2.1.1.	Reference SAR values at 300 MHz .....	75
9.2.1.2.	Verification at 300 MHz .....	75
<b>EXHIBIT 10.</b>	<b>SAR CALCULATION SUMMARY</b> .....	<b>79</b>
10.1.	TERMINOLOGY .....	79
10.1.1.	<i>Sensor factor(<math>\eta_{pd}</math> and <math>\eta_{E2}</math>) in the air (<math>Z_0 = 377[\Omega]</math>)</i> .....	79
10.1.2.	<i>Amplifier settings(<math>AS_i</math>) and probe output</i> .....	79
10.1.3.	<i>Conversion factor (<math>\gamma</math>) in the simulated tissue</i> .....	80
10.1.4.	<i>Conversion factor (<math>\gamma</math>) Calculation</i> .....	80
10.1.5.	<i>Sensitivity (<math>\zeta</math>) in the simulated tissue</i> .....	80
10.1.6.	<i>SAR calculation</i> .....	80

# EXHIBIT 1. INTRODUCTION

## 1.1. SCOPE

<b>Reference:</b>	SAR (Specific Absorption Rate) Requirements IEEE C95.1-1992, FCC OET Bulletin 65 (Supplement C Edition 01-01) Industry Canada RSS-102 (Issue 2). ACA Radio communications (Electromagnetic Radiation – Human Exposure), Amendment Standard 2000 (No. 1)
<b>Title</b>	Safety Levels with respect to human exposure to Radio Frequency Electromagnetic Fields Guideline for Evaluating the Environmental Effects of Radio Frequency Radiation
<b>Purpose of Test:</b>	To verify compliance with Federal regulated SAR requirements in Canada, Chatswood NSW 2067 and the US.
<b>Method of Measurements:</b>	IEEE C95.1-1992, FCC OET Bulletin 65 (Supplement C Edition 01-01) and Industry Canada RSS-102 (Issue 2)
<b>Device Category</b>	Portable
<b>Exposure Category</b>	General Population/Uncontrolled

## 1.2. REFERENCES

The methods and procedures used for the measurements contained in this report are details in the following reference standards:

Publications	Year	Title
IEEE Std. 1528	2003	Draft Recommended practice for determining the Peak Spatial-Average Specific Absorption rate (SAR) in the Human Body Due to Wireless Communications Devices: Experimental Techniques.
Industry Canada RSS102	2005	"Evaluation Procedure for Mobile and Portable Radio Transmitters with respect to Health Canada's Safety Code 6 for Exposure of Humans to Radio Frequency Fields"
ACA	2000	ACA Radio communications (Electromagnetic Radiation – Human Exposure) Amendment Standard 2000 (No. 1)
NCRP Report No.86	1986	"Biological Effects and Exposure Criteria for radio Frequency Electromagnetic Fields"
FCC OET Bulletin 65	2001	"Evaluating Compliance with FCC Guidelines for Human Exposure to radio Frequency Fields"
ANSI/IEEE C95.3	2002	"Recommended Practice for the Measurement of Potentially Hazardous Electromagnetic Fields - RF and Microwave"
ANSI/IEEE C95.1	2005	"Safety Levels with Respect to Human Exposure to Radio Frequency Electromagnetic Fields, 3kHz to 300GHz"
AS/NZS 2722.1	1998	Interim Chatswood NSW 2067n/New Zealand Standard. "Radiofrequency fields, Part 1:Maximum exposure levels – 3kHz to 300GHz "

### ULTRATECH GROUP OF LABS

3000 Bristol Circle, Oakville, Ontario, Canada L6H 6G4  
Tel. #: 905-829-1570, Fax. #: 905-829-8050, Email: vic@ultratech-labs.com, Website: http://www.ultratech-labs.com

File #: ICOM-189-SAR  
October 30, 2008

- Assessed by ITI (UK) Competent Body, NVLAP (USA) Accreditation Body & ACA/AUSTEL (Australia), VCCI (Japan)
- Accredited by Industry Canada (Canada) under ACC-LAB (Europe/Canada MRA and APEC/Canada MRA)
- Recognized/Listed by FCC (USA)
- All test results contained in this engineering test report are traceable to National Institute of Standards and Technology (NIST)

## EXHIBIT 2. PERFORMANCE ASSESSMENT

### 2.1. CLIENT AND MANUFACTURER INFORMATION

<b>APPLICANT:</b>	
<b>Name:</b>	ICOM Incorporated
<b>Address:</b>	1-1-32, Kamiminami, Hirano-ku, Osaka Japan, 547-0003
<b>Contact Person:</b>	Mr. Yoshiteru Yano Phone #: +81-66-793-5302 Fax #: +81-66-793-0013 Email Address: <a href="mailto:export@icom.co.jp">export@icom.co.jp</a>

<b>MANUFACTURER:</b>	
<b>Name:</b>	ICOM Incorporated
<b>Address:</b>	1-1-32, Kamiminami, Hirano-ku, Osaka Japan, 547-0003
<b>Contact Person:</b>	Mr. Yoshiteru Yano Phone #: +81-66-793-5302 Fax #: +81-66-793-0013 Email Address: <a href="mailto:export@icom.co.jp">export@icom.co.jp</a>

### 2.2. DEVICE UNDER TEST (D.U.T.) DESCRIPTION

The following is the information provided by the applicant.

<b>Trade Name</b>	ICOM Inc.
<b>Type/Model Number</b>	IC-M36
<b>Type of Equipment</b>	VHF Transceiver
<b>Serial Number</b>	0000003
<b>Frequency of Operation</b>	156.025~ 157.425 MHz
<b>Rated RF Power</b>	6 W conducted (High) 1 W conducted (Low) <b>Remark: 2 Watts for High power mode when using BP-251 Battery case</b>
<b>Modulation Employed</b>	FM
<b>Antenna</b>	ICOM Inc. helical whip antenna (M/N:FA-SC58V, 156-157.5 MHz, -13.36 dBi)
<b>Power Supply</b>	Rechargeable Li-Ion battery pack (M/N: BP-252, 7.4 V, 980 mAh)
<b>Primary User Functions of D.U.T.</b>	VHF portable transceiver for voice communication in general population / uncontrolled environment

- Assessed by ITI (UK) Competent Body, NVLAP (USA) Accreditation Body & ACA/AUSTEL (Australia), VCCI (Japan)
- Accredited by Industry Canada (Canada) under ACC-LAB (Europe/Canada MRA and APEC/Canada MRA)
- Recognized/Listed by FCC (USA)
- All test results contained in this engineering test report are traceable to National Institute of Standards and Technology (NIST)

## 2.3. LIST OF D.U.T.'S ACCESSORIES:

Belt clip(M/N: MB-109), Speaker-microphone (M/N: HM-165)

## 2.4. SPECIAL CHANGES ON THE D.U.T.'S HARDWARE/SOFTWARE FOR TESTING PURPOSES

N/A

## 2.5. ANCILLARY EQUIPMENT

N/A

## 2.6. GENERAL TEST CONFIGURATIONS

### 2.6.1. Equipment Configuration

Power and signal distribution, grounding, interconnecting cabling and physical placement of equipment of a test system shall simulate the typical application and usage in so far as is practicable, and shall be in accordance with the relevant product specifications of the manufacturer.

The configuration that tends to maximize the D.U.T.'s emission or minimize its immunity is not usually intuitively obvious and in most instances selection will involve some trial and error testing. For example, interface cables may be moved or equipment re-orientated during initial stages of testing and the effects on the results observed.

Only configurations within the range of positions likely to occur in normal use need to be considered.

The configuration selected shall be fully detailed and documented in the test report, together with the justification for selecting that particular configuration.

### 2.6.2. Exercising Equipment

The exercising equipment and other auxiliary equipment shall be sufficiently decoupled from the D.U.T. so that the performance of such equipment does not significantly influence the test results.

## 2.7. SPECIFIC OPERATING CONDITIONS

Power mode was found to be changed to low power after 5 minutes of continuous transmission at the maximum power mode, therefore the measurement procedure was paused after area scan in order to replace the battery pack. In the meantime, the configuration (position) of D.U.T. was maintained the same before and after replacing the battery pack. The zoom (volume) scan for calculating the actual peak spatial-average SAR took approximately 5 minutes afterward.

---

## ULTRATECH GROUP OF LABS

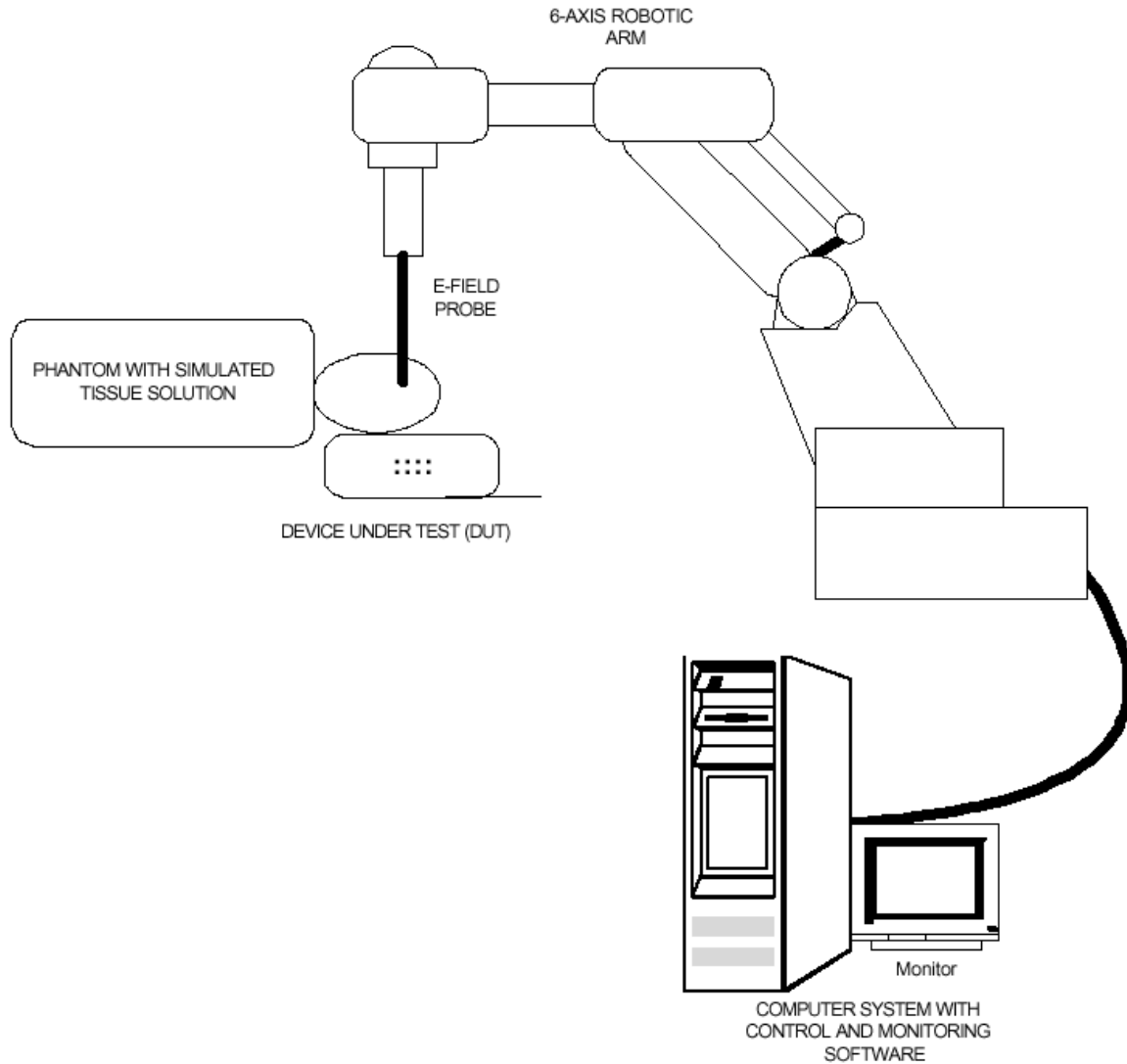
3000 Bristol Circle, Oakville, Ontario, Canada L6H 6G4  
Tel. #: 905-829-1570, Fax. #: 905-829-8050, Email: vic@ultratech-labs.com, Website: http://www.ultratech-labs.com

File #: ICOM-189-SAR  
October 30, 2008

- Assessed by ITI (UK) Competent Body, NVLAP (USA) Accreditation Body & ACA/AUSTEL (Australia), VCCI (Japan)
- Accredited by Industry Canada (Canada) under ACC-LAB (Europe/Canada MRA and APEC/Canada MRA)
- Recognized/Listed by FCC (USA)
- All test results contained in this engineering test report are traceable to National Institute of Standards and Technology (NIST)

## 2.8. BLOCK DIAGRAM OF TEST SETUP

The D.U.T. was configured as normal intended use. The following block diagram shows a representative equipment arrangement during tests:



- Assessed by ITI (UK) Competent Body, NVLAP (USA) Accreditation Body & ACA/AUSTEL (Australia), VCCI (Japan)
- Accredited by Industry Canada (Canada) under ACC-LAB (Europe/Canada MRA and APEC/Canada MRA)
- Recognized/Listed by FCC (USA)
- All test results contained in this engineering test report are traceable to National Institute of Standards and Technology (NIST)



## **EXHIBIT 3. SUMMARY OF TEST RESULTS**

### **3.1. LOCATION OF TESTS**

All of the measurements described in this report were performed at UltraTech Group of Labs located at:  
3000 Bristol Circle, in the city of Oakville, Province of Ontario, Canada.

All measurements were performed in UltraTech's shielded chamber, 24' x 16' x 8'.

### **3.2. APPLICABILITY & SUMMARY OF SAR RESULTS**

The maximum peak spatial - average SAR measured was found to be 0.45 W/Kg.

---

#### **ULTRATECH GROUP OF LABS**

3000 Bristol Circle, Oakville, Ontario, Canada L6H 6G4

Tel. #: 905-829-1570, Fax. #: 905-829-8050, Email: vic@ultratech-labs.com, Website: <http://www.ultratech-labs.com>

**File #: ICOM-189-SAR**

**October 30, 2008**

- Assessed by ITI (UK) Competent Body, NVLAP (USA) Accreditation Body & ACA/AUSTEL (Australia), VCCI (Japan)
- Accredited by Industry Canada (Canada) under ACC-LAB (Europe/Canada MRA and APEC/Canada MRA)
- Recognized/Listed by FCC (USA)
- *All test results contained in this engineering test report are traceable to National Institute of Standards and Technology (NIST)*

## EXHIBIT 4. MEASUREMENTS, EXAMINATIONS & TEST DATA

### 4.1. TEST SETUP

D.U.T. Information		Condition	
Product Name	VHF MARINE TRANSCEIVER	Robot Type	6 Axis
Model Number	IC-M36	Scan Type	SAR – Area/Zoom/Att Vs Depth
Serial Number	0000003	Measured Field	E
Frequency Band [MHz]	156.025-157.425	Phantom Type	2 <sub>mm</sub> base Flat Phantom
Frequency Tested [MHz]	156.025, 157.425	Phantom Position	Waist
Rated Conducted Power [W]	6 (HIGH Power Mode)	Room Temperature [°C]	22.0 ± 1
Antenna Type	ICOM helical whip antenna	Room Humidity [%]	40 ± 10
Modulation	FM	Tissue Temperature [°C]	22.0 ± 1
Worst Case Duty Cycle	50 %		
Duty Cycle Tested	100 %		
Source(or Usage)-Based Time-Average Factor	0.5 (mechanical PTT button)		

Type of Tissue	Brain	Muscle
Test Frequency [MHz]	150	150
Measured Dielectric Constant	53.7 (+2.7 %)	61.4 (-0.8 %)
Target Dielectric Constant	52.3	61.9
Measured Conductivity [S/m]	0.74 (-2.1 %)	0.80 (+0.4 %)
Target Conductivity [S/m]	0.76	0.80
Penetration Depth (Plane Wave Excitation) [mm]	63.4	61.9
Probe Model Number	ET20	ET20
Probe Serial Number	03-MAY-0027	03-MAY-0027
Probe Orientation	Isotropic	Isotropic
Probe Offset [mm]	2.00	2.00
Probe Tip Diameter [mm]	4.00	4.00
Sensor Factor ( $\eta_{pd}$ ) [mV/(mW/cm <sup>2</sup> )]	10.8	10.8
Conversion Factor ( $\gamma$ )	6.550	6.460
Sensitivity ( $\zeta$ ) [W/Kg/mV]	3.944E-02	4.323E-02

### ULTRATECH GROUP OF LABS

3000 Bristol Circle, Oakville, Ontario, Canada L6H 6G4  
 Tel. #: 905-829-1570, Fax. #: 905-829-8050, Email: vic@ultratech-labs.com, Website: http://www.ultratech-labs.com

File #: ICOM-189-SAR  
 October 30, 2008

- Assessed by ITI (UK) Competent Body, NVLAP (USA) Accreditation Body & ACA/AUSTEL (Australia), VCCI (Japan)
- Accredited by Industry Canada (Canada) under ACC-LAB (Europe/Canada MRA and APEC/Canada MRA)
- Recognized/Listed by FCC (USA)
- All test results contained in this engineering test report are traceable to National Institute of Standards and Technology (NIST)

**4.2. PHOTOGRAPH OF D.U.T**



**< D.U.T.'s front and rear view >**

**ULTRATECH GROUP OF LABS**

3000 Bristol Circle, Oakville, Ontario, Canada L6H 6G4  
Tel. #: 905-829-1570, Fax. #: 905-829-8050, Email: vic@ultratech-labs.com, Website: http://www.ultratech-labs.com

**File #: ICOM-189-SAR**  
**October 30, 2008**

- Assessed by ITI (UK) Competent Body, NVLAP (USA) Accreditation Body & ACA/AUSTEL (Australia), VCCI (Japan)
- Accredited by Industry Canada (Canada) under ACC-LAB (Europe/Canada MRA and APEC/Canada MRA)
- Recognized/Listed by FCC (USA)
- All test results contained in this engineering test report are traceable to National Institute of Standards and Technology (NIST)

### 4.3. PHOTOGRAPHS OF D.U.T. POSITION

#### 4.3.1. Head Configuration

##### 4.3.1.1. Head-front PTT



### ULTRATECH GROUP OF LABS

3000 Bristol Circle, Oakville, Ontario, Canada L6H 6G4  
Tel. #: 905-829-1570, Fax. #: 905-829-8050, Email: vic@ultratech-labs.com, Website: http://www.ultratech-labs.com

**File #: ICOM-189-SAR**  
**October 30, 2008**

- Assessed by ITI (UK) Competent Body, NVLAP (USA) Accreditation Body & ACA/AUSTEL (Australia), VCCI (Japan)
- Accredited by Industry Canada (Canada) under ACC-LAB (Europe/Canada MRA and APEC/Canada MRA)
- Recognized/Listed by FCC (USA)
- All test results contained in this engineering test report are traceable to National Institute of Standards and Technology (NIST)

### 4.3.2. Body Configuration

4.3.2.1. *Body-worn; Back side of EUT in parallel to the phantom with the belt-clip in contact, Belt-clip (M/N: MB-109) and Speaker-microphone (M/N: HM-165)*



Distance between back of EUT and phantom = 15 mm  
Distance between back of EUT and antenna = 35 mm

### ULTRATECH GROUP OF LABS

3000 Bristol Circle, Oakville, Ontario, Canada L6H 6G4  
Tel. #: 905-829-1570, Fax. #: 905-829-8050, Email: vic@ultratech-labs.com, Website: <http://www.ultratech-labs.com>

**File #: ICOM-189-SAR**  
**October 30, 2008**

- Assessed by ITI (UK) Competent Body, NVLAP (USA) Accreditation Body & ACA/AUSTEL (Australia), VCCI (Japan)
- Accredited by Industry Canada (Canada) under ACC-LAB (Europe/Canada MRA and APEC/Canada MRA)
- Recognized/Listed by FCC (USA)
- All test results contained in this engineering test report are traceable to National Institute of Standards and Technology (NIST)

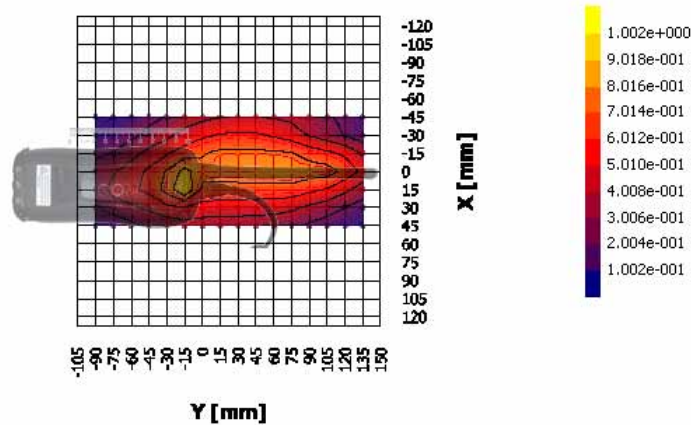
**4.4. MAXIMUM PEAK SPATIAL-AVERAGE SAR**

**4.4.1. Maximum Peak Spatial-average SAR Data**

#	Configuration	Device Test Positions	Antenna Position	Freq. [MHz]	Channel	MAX. SAR [W/Kg]
*	General Population/Uncontrolled Exposure Category Limit					1.6
02	Li-ion rechargeable battery pack (M/N: BP-252) Belt clip (M/N: MB-109) Speaker-microphone (M/N: HM-165)	Body-worn	FIX	156.025	Low	0.45

**4.4.2. Maximum Peak Spatial-Average SAR Location**

Complete area Prescans was conducted to determine the location of the highest SAR and the device was repositioned to allow the identified hot-spots to be orientated with as large an area around the hot-spots to come into contact with the phantom surface. This procedure ensured that the maximum SAR readings would be obtained from the hot-spot areas identified. Unless otherwise specified, the reference point (0, 0) in the plots was set to the point at the base of antenna in the projected image of D.U.T. to the phantom surface.



**ULTRATECH GROUP OF LABS**

3000 Bristol Circle, Oakville, Ontario, Canada L6H 6G4  
 Tel. #: 905-829-1570, Fax. #: 905-829-8050, Email: vic@ultratech-labs.com, Website: http://www.ultratech-labs.com

File #: ICOM-189-SAR  
 October 30, 2008

- Assessed by ITI (UK) Competent Body, NVLAP (USA) Accreditation Body & ACA/AUSTEL (Australia), VCCI (Japan)
- Accredited by Industry Canada (Canada) under ACC-LAB (Europe/Canada MRA and APEC/Canada MRA)
- Recognized/Listed by FCC (USA)
- All test results contained in this engineering test report are traceable to National Institute of Standards and Technology (NIST)

**4.5. SAR MEASUREMENT DATA\***

**4.5.1. Head Configuration Result**

*4.5.1.1. Head-front; PTT*

#	Configuration	Antenna Position	Frequency [MHz]	Channel	SAR <sub>local</sub> Before [W/Kg]	SAR <sub>local</sub> After [W/Kg]	MAX SAR <sub>1g</sub> [W/Kg]
*	General Population/Uncontrolled Exposure Category Limit						1.6
01	Li-ion rechargeable battery pack (M/N: BP-252)	FIX	156.025	Low	0.09	0.08	0.30
02		FIX	157.425	High			-

**4.5.2. Body Configuration Result**

*4.5.2.1. Body-worn; Back-side in parallel to the phantom and the belt clip in contact*

#	Configuration	Antenna Position	Frequency [MHz]	Channel	SAR <sub>local</sub> Before [W/Kg]	SAR <sub>local</sub> After [W/Kg]	MAX SAR <sub>1g</sub> [W/Kg]
*	General Population/Uncontrolled Exposure Category Limit						1.6
03	Li-ion rechargeable battery pack (M/N: BP-252) Belt clip (M/N: MB-109) Speaker-microphone (M/N: HM-165)	FIX	156.025	Low	0.15	0.13	0.45
04		FIX	157.425	High			-

\* If the SAR measured at the middle channel for each test configuration is at least 3.0 dB lower than the SAR limit, testing at the high and low channels is optional for such test configuration(s).

- Assessed by ITI (UK) Competent Body, NVLAP (USA) Accreditation Body & ACA/AUSTEL (Australia), VCCI (Japan)
- Accredited by Industry Canada (Canada) under ACC-LAB (Europe/Canada MRA and APEC/Canada MRA)
- Recognized/Listed by FCC (USA)
- All test results contained in this engineering test report are traceable to National Institute of Standards and Technology (NIST)

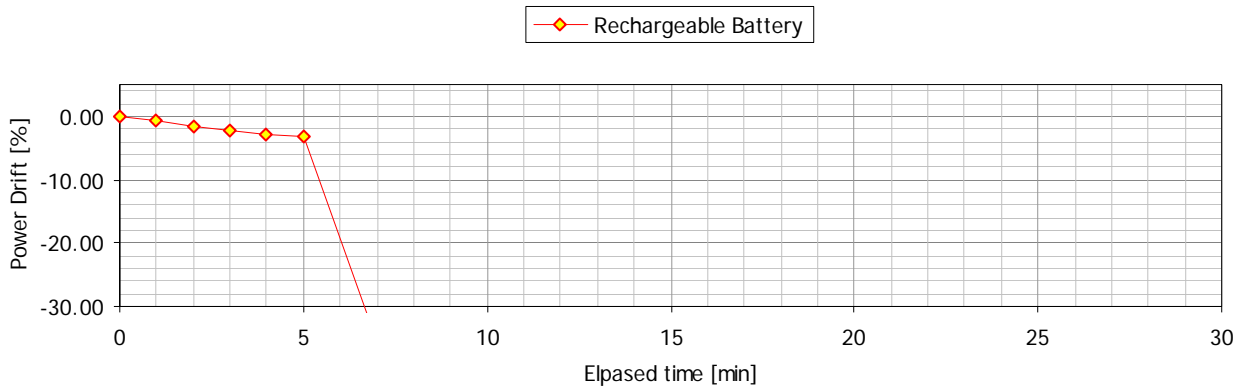
**4.5.3. Power Measurement**

Fundamental Frequency (MHz)	Measured RF Output Power (W)
156.025	5.61
157.425	5.75

**4.5.4. SAR Drift**

The local SAR was measured at the arbitrary location in the vicinity of the antenna fed point in the simulated tissue at 156.025 MHz during the period of 30 minute for rechargeable Li-Ion battery pack (M/N: BP-252).

After 5 minutes of the continuous transmission the power mode of DUT changed to low mode automatically due to built in power saving scheme. Please refer to 2.7. Specific Operating Conditions



**Remark:** EUT with optional battery case (M/N: BP-251) will be operated at high power mode of 2 Watts instead of 6 Watts as explained in pg 23 of user’s manual therefore test configuration with optional battery case was not accounted for SAR test.

- Assessed by ITI (UK) Competent Body, NVLAP (USA) Accreditation Body & ACA/AUSTEL (Australia), VCCI (Japan)
- Accredited by Industry Canada (Canada) under ACC-LAB (Europe/Canada MRA and APEC/Canada MRA)
- Recognized/Listed by FCC (USA)
- All test results contained in this engineering test report are traceable to National Institute of Standards and Technology (NIST)



## EXHIBIT 5. SAR SYSTEM CONFIGURATION & TEST METHODOLOGY

### 5.1. MEASUREMENT SYSTEM SPECIFICATIONS

Positioning Equipment	Probe
Type : 3D Near Field Scanner	Sensor : E-Field
Location Repeatability : 0.1 [mm]	Spatial Resolution : 1 [mm <sup>3</sup> ]
Speed 180 [°/sec]	Isotropic Response : ±0.25 [dB]
AC motors	Dynamic Range : 0.01 to 100 [W/Kg]
Computer	Phantom
Type : Pentium III 500MHz	Tissue : Simulated Tissue with electrical characteristics similar to those of the human at normal body temperature.
Memory : 256 MB RAM	Left/Right Head: IEEE P1528 Compliant SAM manufactured by Aprel
Operating System : Windows 2000 Pro	Body/Frontal Head: IEEE Flat Phantom 2 [mm] Base
Monitor : 19" SVGA	

### 5.2. TEST PROCEDURES

In the SAR measurement, the positioning of the probes must be performed with sufficient accuracy to obtain repeatable measurements in the presence of rapid spatial attenuation phenomena. The accurate positioning of the E-field probe is accomplished by using a high precision robot. The robot can be taught to position the probe sensor following a specific pattern of points. In a first sweep, the sensor is positioned as close as possible to the interface, with the sensor enclosure touching the inside of the phantom shell. The SAR is measured on a grid of points, which covers the curved surface of the phantom in an area larger than the size of the D.U.T. After the initial scan, a high-resolution volume grid is used to locate the absolute maximum measured energy point and to calculate the peak spatial-average SAR. At this location, attenuation versus depth scan will be accomplished by the measurement system in order to verify the peak spatial-average SAR measured.

### 5.3. PHANTOM

For Head mounted devices placed next to the ear, the phantom used in the evaluation of the RF exposure of the user of the wireless device is a IEEE P1528 compliant SAM phantom, shaped like a human head and filled with a mixture simulating the dielectric characteristics of the brain. A left sided head and a right sided head are evaluated to determine the worst case orientation for SAR. For body mounted and frontal held push-to-talk devices, a flat phantom of dimensions 70x42x20cm with a base plate thickness of 2mm is used.

- Assessed by ITI (UK) Competent Body, NVLAP (USA) Accreditation Body & ACA/AUSTEL (Australia), VCCI (Japan)
- Accredited by Industry Canada (Canada) under ACC-LAB (Europe/Canada MRA and APEC/Canada MRA)
- Recognized/Listed by FCC (USA)
- All test results contained in this engineering test report are traceable to National Institute of Standards and Technology (NIST)

**5.4. SIMULATED TISSUE**

Simulated Tissue: Suggested in a paper by George Hartsgrove and colleagues in University of Ottawa Ref.: Bioelectromagnetics 8:29-36 (1987)

Ingredient	Quantity
Water	40.4 %
Sugar	56.0 %
Salt	2.5 %
HEC	1.0 %
Bactericide	0.1 %

**Table 5.4. Example of composition of simulated tissue**

This simulated tissue is mainly composed of water, sugar and salt. At higher frequencies, in order to achieve the proper conductivity, the solution does not contain salt. Also, at these frequencies, D.I. water and alcohol is preferred.

Target Frequency (MHz)	Head		Body	
	$\epsilon_r$	$\sigma$ (S/m)	$\epsilon_r$	$\sigma$ (S/m)
150	52.3	0.76	61.9	0.80
300	45.3	0.87	58.2	0.92
450	43.5	0.87	56.7	0.94
835	41.5	0.90	55.2	0.97
900	41.5	0.97	55.0	1.05
915	41.5	0.98	55.0	1.06
1450	40.5	1.20	54.0	1.30
1610	40.3	1.29	53.8	1.40
1800 – 2000	40.0	1.40	53.3	1.52
2450	39.2	1.80	52.7	1.95
3000	38.5	2.40	52.0	2.73
5800	35.3	5.27	48.2	6.00

( $\epsilon_r$  = relative permittivity,  $\sigma$  = conductivity and  $\rho = 1000 \text{ Kg/m}^3$ \*)

\* The actual mass density of the equivalent tissue vary based on the composition of the tissue from 990 Kg/m<sup>3</sup> to 1,300 Kg/m<sup>3</sup>.

- Assessed by ITI (UK) Competent Body, NVLAP (USA) Accreditation Body & ACA/AUSTEL (Australia), VCCI (Japan)
- Accredited by Industry Canada (Canada) under ACC-LAB (Europe/Canada MRA and APEC/Canada MRA)
- Recognized/Listed by FCC (USA)
- All test results contained in this engineering test report are traceable to National Institute of Standards and Technology (NIST)

**5.4.1. Preparation**

The weight requirements is determined and measured carefully for all the components. A clean container is used where the ingredients will be mixed. A stirring paddle mounted to a drill press is used to stir the mixture. First the heat is applied to the DI water to approximately 40 °C to help the ingredients dissolve well and then the salt and the bactericide are added. It is stirred until all the ingredients are completely dissolved. It is continuously stirred slowly while adding the sugar. Rotation of stirring paddle at a high RPM is avoided to prevent air bubbles in the mixture. Later on, the HEC is added to maintain the solution homogeneous. Mixing time is approximately 2 hours.

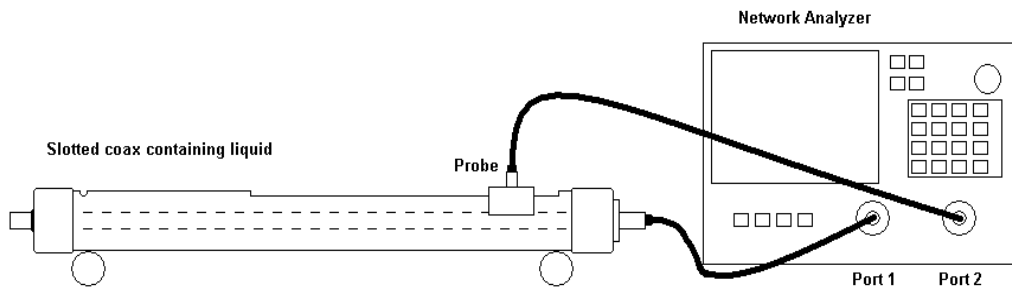
**5.5. MEASUREMENT OF ELECTRICAL CHARACTERISTICS OF SIMULATED TISSUE**

- 1) Slotted Coaxial Waveguide
- 2) HP Dielectric Strength Probe System

**5.5.1. Slotted Coaxial Waveguide**

**5.5.1.1. Equipment set-up**

The test equipment consists of a slotted coaxial transmission line with a probe connected to a vector network analyzer, as shown in Figure 4.5.1.1. The log-magnitude and phase of  $S_{21}$  should be displayed simultaneously. Source power should be set to a level high enough to provide good signal-to-noise ratio. Periodically (annually or whenever the measuring scale along the line length is changed) a measurement is made on a reference liquid to validate the system. Since the measured quantities are magnitude and phase changes versus distance, the accuracy of the scale is very critical.



**Figure 5.5.1.1. Slotted line set-up**

The network analyzer injects a signal into one end of the slotted coaxial transmission line. The probe inserted through the slot into the tissue-equivalent material detects the RF amplitude and phase for each measurement position along the length of the line. A full two-port calibration of the network analyzer should be carried out prior to connecting the sample holder, and the following precautions should be observed:

- Assessed by ITI (UK) Competent Body, NVLAP (USA) Accreditation Body & ACA/AUSTEL (Australia), VCCI (Japan)
- Accredited by Industry Canada (Canada) under ACC-LAB (Europe/Canada MRA and APEC/Canada MRA)
- Recognized/Listed by FCC (USA)
- All test results contained in this engineering test report are traceable to National Institute of Standards and Technology (NIST)

- a) Fill the slotted line carefully to avoid trapping air bubbles. This operation should be performed while the slotted line is horizontal.
- b) The probe should be inserted into the slot at the end nearest to the input connector of the slotted line, ensuring that the tissue-equivalent liquid is flush with the inside surface of the line, and aligned with a well-defined position on the distance scale of the slotted line.
- c) The probe should be inserted perpendicular to the slotted–line longitudinal axis until a stable and adequate amplitude response is achieved. Do not insert the probe too deeply into the coaxial line, because it can overly perturb the field distribution.

**5.5.1.2. Measurement procedure.**

- a) Configure and calibrate the network analyzer.
- b) Measure 10 to 20 log-magnitude and phase data points along the slotted line corresponding to about a 30 dB change in magnitude.
- c) Plot  $S_{21}$  log-magnitude and phase vs. measurement distance.
- d) Determine if the graphed points closely follow a straight-line approximation, based on the correlation coefficient or a similar statistical measure. The data should produce a good linear curve fit (expected correlation coefficient  $r^2 > 0.99$  for lossy materials). If not, re-measure the liquid by increasing the sample points to extend the magnitude change from 30 to 40 dB. Note: for low loss materials, ensure that the slotted line is long enough to avoid reflections from the load-terminated end.
- e) Calculate the conductivity and relative permittivity of the tissue-equivalent material using Equations (5.5.1.2.) derived from

$$\begin{aligned} \bar{\alpha} &= \frac{m_m \ln(10)}{20} && \text{Np/cm} \\ \bar{\beta} &= \frac{m_p \pi}{180} && \text{rad/cm} \\ \epsilon'_r &= \frac{(\bar{\beta})^2 - (\bar{\alpha})^2}{\omega^2 \mu_0 \epsilon_0} && (5.5.1.2.) \\ \sigma &= \frac{2\bar{\alpha}\bar{\beta}}{\omega\epsilon_0} \left( \frac{100 \text{ cm}}{\text{m}} \right) && \text{S/m} \end{aligned}$$

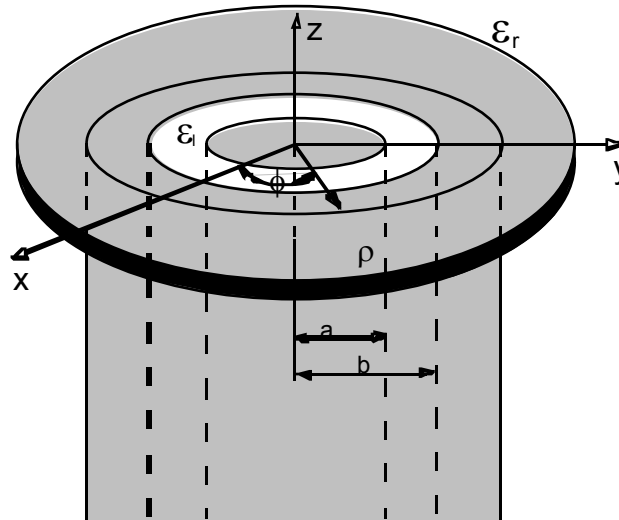
where,  $m_m$  and  $m_p$  are the slopes of the least-squares linear fits of the log-magnitude and phase plots, respectively, and  $\bar{\alpha}$  and  $\bar{\beta}$  are the average attenuation and propagation coefficients along the line.

**5.5.2. HP Dielectric Strength Probe System (open-ended coaxial transmission-line probe/sensor)**

**5.5.2.1. Equipment set-up**

The equipment consists of a probe connected to one port of a vector network analyzer. The probe is an open-ended coaxial line, as shown in Figure B.2. Cylindrical coordinates ( $\rho$ ,  $\phi$ ,  $z$ ) are used where  $\rho$  is the radial distance from the axis,  $\phi$  is the angular displacement around the axis,  $z$  is the displacement along the axis,  $a$  is the inner conductor radius, and  $b$  is the outer conductor inner radius.

The sample holder is a non-metallic container that is large compared with the size of the probe immersed in it. A probe with an outer diameter  $b$  of 2 to 4 mm is suitable for the measurement of tissue-equivalent materials in the 300 MHz to 3 GHz frequency range. This probe size is commensurate with sample volumes of 50 cc or higher. Larger probes of up to 7 mm outer diameter  $b$  may be used with larger sample volumes. A flange is typically included to better represent the infinite ground-plane assumption used in admittance calculations.



**Figure 5.5.2.1. An open-ended coaxial probe with inner and outer radii  $a$  and  $b$ , respectively**

The accuracy of the short-circuit measurement should be verified for each calibration at a number of frequencies. A short circuit can be achieved by gently pressing a piece of aluminum foil against the open end. For best electrical contact, the probe end should be flat and free of oxidation. Larger the sensors generally have better foil short-circuit repeatability. It is possible to obtain good contact with some commercial 4.6 mm probes using the metal-disk short-circuit supplied with the kit. For best repeatability, it may be necessary to press the disk by hand.

The network analyzer is configured to measure the magnitude and phase of the admittance. A one-port reflection calibration is performed at the plane of the probe by placing materials for which the reflection

- Assessed by ITI (UK) Competent Body, NVLAP (USA) Accreditation Body & ACA/AUSTEL (Australia), VCCI (Japan)
- Accredited by Industry Canada (Canada) under ACC-LAB (Europe/Canada MRA and APEC/Canada MRA)
- Recognized/Listed by FCC (USA)
- All test results contained in this engineering test report are traceable to National Institute of Standards and Technology (NIST)

coefficient can be calculated in contact with the probe. Three standards are needed for the calibration, typically a short circuit, air, and de-

ionized water at a well-defined temperature (other reference liquids such as methanol or ethanol may be used for calibration). The calibration is a key part of the measurement procedure, and it is therefore important to ensure that it has been performed correctly. It can be checked by re-measuring the short circuit to ensure that a reflection coefficient of  $\Gamma = -1.0$  (linear units) is obtained consistently.

#### **5.5.2.2. Measurement procedure**

- a) Configure and calibrate the network analyzer and probe system.
- b) Place the sample in a non-metallic container and immerse the probe. A fixture or clamp is recommended to stabilize the probe, mounted such that the probe face is at an angle with respect to the liquid surface to minimize trapped air bubbles beneath the flange.
- c) Measure the complex admittance with respect to the probe aperture.
- d) Compute the complex relative permittivity  $\epsilon_r = \epsilon'_r - j\sigma/\omega\epsilon_0$ .

- Assessed by ITI (UK) Competent Body, NVLAP (USA) Accreditation Body & ACA/AUSTEL (Australia), VCCI (Japan)
- Accredited by Industry Canada (Canada) under ACC-LAB (Europe/Canada MRA and APEC/Canada MRA)
- Recognized/Listed by FCC (USA)
- All test results contained in this engineering test report are traceable to National Institute of Standards and Technology (NIST)

## 5.6. SYSTEM CALIBRATION

The SAR measurement system has two main components:

- a) the probe, which is connected to the inputs of
- b) the instrumentation amplifier whose outputs are connected through the optical transmission line to
- c) the computer.

The system is calibrated as one unit not as individual components. If any components is modified or replaced, the system must be re-calibrated.

The system calibration is performed by two steps:

- 1) determination of the sensitivity of the probe in the air by introducing it into the well-defined RF field, and
- 2) correlation of the measured E-field in the dielectric medium to the temperature rise in a dielectric medium.

### 5.6.1. Probe linearity

Detector diodes at the dipole feed-point are used to rectify the sensor voltage output. The rectified signal is transmitted through resistive (RF-transparent) lines to the sensor amplifier. At low field strength levels the output voltage is proportional to the square of the amplitude of the incident field; at higher signal levels, the output voltage is not linearly proportional to  $|E|^2$ , but becomes proportional to E. The compensation for diode compression is carried out for the each detector diode using the 3-rd order polynomial least-square fit algorithm before any further evaluation.

### 5.6.2. Isotropy Calibration

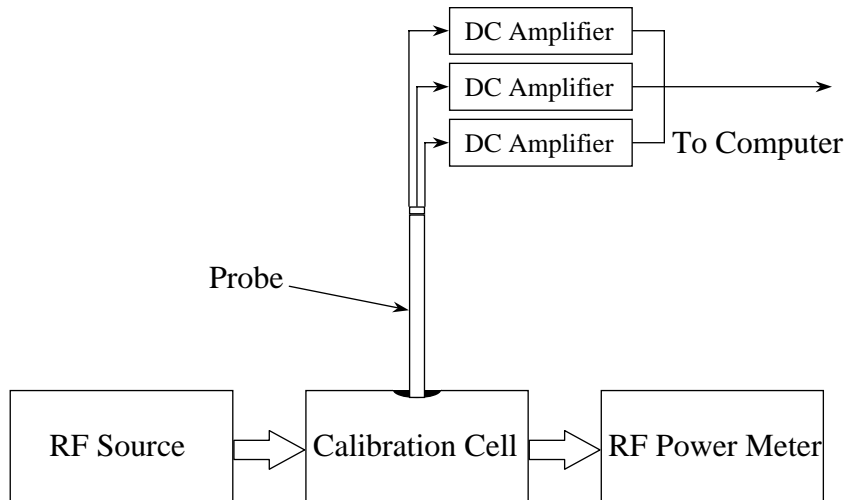
Note: Equipment must be regularly calibrated.

- RF Signal Generator - frequency range to at least 6 GHz,
- RF Amplifier – if needed to generate the required power density in the test cell,
- Test Cell - TEM (Crawford) cell, waveguide, or other device capable of maintaining a uniform field,
- RF Power Meter - capable of measuring at least 4 Watts (current calibration is mandatory!) if possible traceable to the National Institute of Standards and Technology (NIST).
- E-Field Probe (under calibration)
- Probe Support Fixture
- Instrumentation Amplifier
- Transmission Line
- Computer Program with the Automated Calibration System Program

### 5.6.3. Method

Due to impedance variations in the diodes and the transmission line, and slight differences in gain among the channels of the instrumentation amplifier, a normalization method had been designed. The calibration method actually used is to determine the factors necessary adjust each channel of the system so it's indicated output can then be equated to the well-defined RF field. These factors are referred to as "Amplifier Settings".

- Assessed by ITI (UK) Competent Body, NVLAP (USA) Accreditation Body & ACA/AUSTEL (Australia), VCCI (Japan)
- Accredited by Industry Canada (Canada) under ACC-LAB (Europe/Canada MRA and APEC/Canada MRA)
- Recognized/Listed by FCC (USA)
- All test results contained in this engineering test report are traceable to National Institute of Standards and Technology (NIST)



**Figure 5.6.3. Isotropy Calibration Setup for Amplifier Setting**

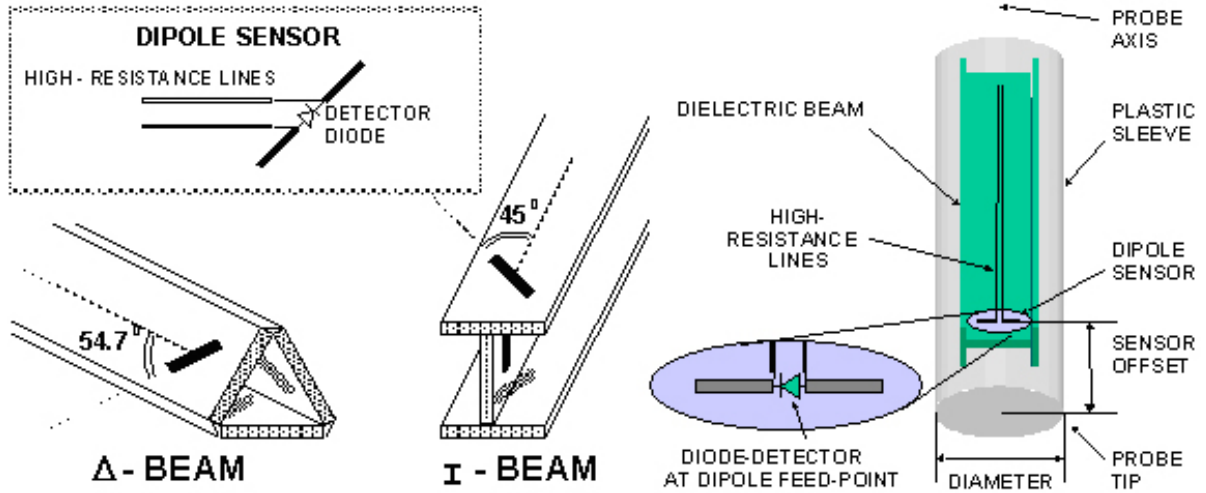
**5.6.3.1. Measurement procedure**

Isotropy Calibration of E-field probes can be performed using a TEM cell manufactured by IFI (Instrumentation for Industry, Farmingdale, NY 11735) with operating frequency at or below 1 GHz. Above 1 GHz, waveguides are used to calibrate the probes in free space.

- Connect the equipments as shown in Figure 5.6.3;
- Adjust the RF generator output so that the power density at the calibration point inside the TEM cell is well-defined. (For the IFI model CC-110 cell, the uniform power density of 1.0 [mW/cm<sup>2</sup>] requires the power level of 271.0 [mW]);
- Mount the probe of the system to calibrate in the support fixture. Insert the probe through the aperture of the TEM cell. The probe handle should be at the geometric center of the aperture, i.e. midway between the septum and the upper surface, and orthogonal to the side of the cell. The sensing portion of the probe should be located at a point halfway across the depth of the cell (volumetric center).
- Once the prescribed position is obtained, it must be maintained during the rest of the measurement. The only movement of the probe allowed is rotation on its axis to position the dipole in the plane of the E-field and, for channel 3 only, parallel to the vertical uniform field (max./min. output).



- Verify that the RF power level remains constant throughout the measurement. While the probe is being rotated through 360 degrees, software indicators will show the maximum measured on each channel.



**Figure 5.6.3.1. E-field probe construction**

**5.6.3.2. Definition of Amplifier Settings**

The initial sequence of probe calibrations steps performed with SAR determinations produces the factors used in scaling probe output voltage to RF power density. For historical reasons all probes factors are compared to a factor 10.8 [mV] per [mW/cm<sup>2</sup>] that was typical of a prototype probe, but is in fact an arbitrary number used as an intermediately constant. The factor of 10.8 [mV/(mW/cm<sup>2</sup>)] is known as the sensor factor to the uniform power density ( $\eta_{pd}$ ), but does not change. Also we can derive 10.8/3,770 [mV/(V/m)<sup>2</sup>] of the sensor factor to the  $|E|^2$  ( $\eta_{E2}$ ), providing 377 [ $\Omega$ ] as free space impedance.

$$\eta_{pd} = 10.8 [mV / (mW / cm^2)] \equiv \eta_{E2} = \frac{10.8}{3770} [mV / (V / m)^2]$$

$$Pd [mW / cm^2] = \frac{PO_{tot}}{\eta_{pd}}, |E|^2 [(V / m)^2] = \frac{PO_{tot}}{\eta_{E2}} \text{ and } SAR = \frac{\sigma \times \frac{PO_{tot}}{\eta_{E2}}}{\rho}$$

To calibrate a probe, each channel is assigned an amplifier setting. This factor is obtained from the maximum probe output voltage measured during probe calibration. This probe output voltage is corrected for any DC offset of the instrumentation amplifier, usually a very small amount.

- Assessed by ITI (UK) Competent Body, NVLAP (USA) Accreditation Body & ACA/AUSTEL (Australia), VCCI (Japan)
- Accredited by Industry Canada (Canada) under ACC-LAB (Europe/Canada MRA and APEC/Canada MRA)
- Recognized/Listed by FCC (USA)
- All test results contained in this engineering test report are traceable to National Institute of Standards and Technology (NIST)

During calibration, the sensitivity for the E-field tangential to the dipole axis caused by the geometry of the probe construction is carefully considered to obtain the correct amplifier setting for each channel. Thus, the amplifier settings for each channel are as follows:

$$AS_i = \frac{\eta_{pd}}{V_{max_i} - DC_i} \times \cos^2(\varphi - \theta_i) \times Pd$$

Where,

- AS<sub>i</sub> Amplifier Setting for channel i
- η<sub>pd</sub> Sensor Factor to the uniform power density, an arbitrary value 10.8 [mV/(mW/cm<sup>2</sup>)]
- V<sub>max<sub>i</sub></sub> Maximum probe raw output recorded for channel i by rotation about the probe axis with the probe in a test cell
- DC<sub>i</sub> Ambient DC offset of channel i (the voltage output of the transmission line with the instrumentation amplifier on and RF power off, recorded at the beginning of the probe calibration)
- φ Smaller angle between the probe axis and the direction of the E-field (90° providing the probe axis is parallel to the plane of the septum inside TEM cell)
- θ<sub>i</sub> Smaller angle between the probe axis and the dipole sensor axis of the channel i (θ<sub>1</sub> = θ<sub>2</sub> = 45°, θ<sub>3</sub> = 90° for I-beam probe, and θ<sub>1</sub> = θ<sub>2</sub> = θ<sub>3</sub> = 54.7° for triangular-beam probe)
- Pd Well-defined power density [mW/cm<sup>2</sup>] at the calibration point in a test cell

### 5.6.4. Thermal Transfer Calibration

#### 5.6.4.1. Measurement procedure

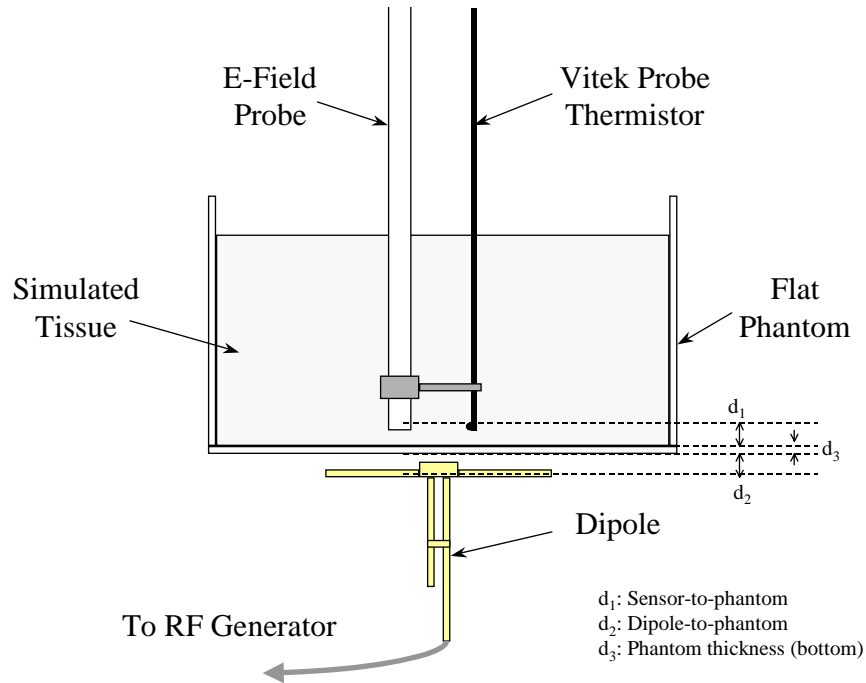
An RF transparent thermistor-based temperature probe and a isotropic E-field probe are placed side-by-side in a planar phantom while both are exposed to RF energy from a half wave dipole antenna located below the phantom. The E-field probe and amplifiers were previously calibrated.

First, the location of the maximum E-field close to the phantom’s bottom is determined as a function of power into the dipole.

Then, the E-field probe is moved sideways so that the temperature probe, while affixed to the E-field probe is placed at the previous location of the E-field probe.

Finally, temperature changes for a certain amount of time (generally 10 to 30 seconds) exposures at the same RF power levels used for the E-field are recorded. Care is taken to allow cooling down to the original temperature and temperature stabilization between tests.

- Assessed by ITI (UK) Competent Body, NVLAP (USA) Accreditation Body & ACA/AUSTEL (Australia), VCCI (Japan)
- Accredited by Industry Canada (Canada) under ACC-LAB (Europe/Canada MRA and APEC/Canada MRA)
- Recognized/Listed by FCC (USA)
- All test results contained in this engineering test report are traceable to National Institute of Standards and Technology (NIST)



**Figure 5.6.4.1. Flat Phantom, Thermistor and E-Field Probe**

The following simple equation relates SAR to the initial temperature slope:

$$SAR_t = \frac{c \cdot \Delta T}{\Delta t} \tag{Eq. 1}$$

In (Eq.1)  $t$  is the exposure time [sec],  $c$  is the specific heat capacity of the simulated tissue [J/Kg/°C] and  $\Delta T$  is the temperature increase [°C] due to the RF exposure. SAR is proportional to  $\Delta T / t$ , the initial rate of tissue heating, before thermal diffusion takes place.

From (Eq.1) it is possible to quantify the electric field in the simulated tissue by equating the thermally-derived SAR to the E-field:

$$SAR = \frac{|E|^2 \cdot \sigma}{\rho} \tag{Eq. 2}$$

,where  $\sigma$  is the simulated tissue conductivity [S/m] and  $\rho$  its mass density [Kg/m<sup>3</sup>]; The actual mass density of the simulated tissue is required during the thermal transfer calibration, while mass density of 1,000 [Kg/m<sup>3</sup>] is conventionally chosen during the SAR measurements.

- Assessed by ITI (UK) Competent Body, NVLAP (USA) Accreditation Body & ACA/AUSTEL (Australia), VCCI (Japan)
- Accredited by Industry Canada (Canada) under ACC-LAB (Europe/Canada MRA and APEC/Canada MRA)
- Recognized/Listed by FCC (USA)
- All test results contained in this engineering test report are traceable to National Institute of Standards and Technology (NIST)

**5.6.4.2. Determination of Conversion Factor ( $\gamma$ ) in the simulated tissue**

The sensitivity of the probe in the dielectric media compared to its sensitivity in the air, is different. Conversion Factor ( $\gamma$ ) is defined to determine the degree of the enhancement of sensitivity in the different dielectric media and relate it to its sensitivity in the air.

$$PO_{tot\_tissue} \equiv PO_{tot\_air} \times \gamma$$

Thus,

$$|E_{tissue}|^2 = \frac{PO_{tot\_tissue}}{\eta_{E2}} \times \frac{1}{\gamma}, \text{ and } SAR_{tissue} = \frac{\sigma \times \frac{PO_{tot\_tissue}}{\eta_{E2}} \times \frac{1}{\gamma}}{\rho}$$

where,

$ E_{tissue} ^2$	RMS E-field level [(V/m) <sup>2</sup> ] induced within the exposed tissue
$PO_{tot\_tissue}$	Probe voltage output measured in the simulated tissue [mV]
$PO_{tot\_air}$	Probe voltage output measured in the air ( $Z_{air} = 377[\Omega]$ ) [mV]
$\eta_{E2}$	Sensor Factor to the $ E ^2$ , an arbitrary value 10.8/3,770 [mV/(V/m) <sup>2</sup> ]
$\gamma$	Conversion factor; ratio of sensor response in air to response in the dielectric media

The conversion factor ( $\gamma$ ) can be used to scale the E-field in terms of the thermally-derived SAR. It is the quotient of  $SAR_t$ , the SAR determined from temperature measurements in the flat phantom, and  $PO_{tot\_tissue}$ , the E-field probe output voltage obtained at the same location in the phantom

$$SAR_t = SAR_{tissue}$$

$$\frac{c \cdot \Delta T}{\Delta t} = \frac{\sigma_{@cal} \times |E_{tissue}|^2}{\rho}$$

$$= \frac{\sigma_{@cal} \times \frac{PO_{tot\_tissue}}{\eta_{E2}} \times \frac{1}{\gamma}}{\rho}$$

Thus,

$$\gamma = \frac{\sigma_{@cal}}{\eta_{E2} \times \rho} \times \frac{PO_{tot\_tissue}}{SAR_t} = \frac{\sigma_{@cal} \times 3,770}{10.8 \times c \times \rho} \times \frac{PO_{tot\_tissue}}{\Delta T / \Delta t} \tag{Eq. 3}$$

- Assessed by ITI (UK) Competent Body, NVLAP (USA) Accreditation Body & ACA/AUSTEL (Australia), VCCI (Japan)
- Accredited by Industry Canada (Canada) under ACC-LAB (Europe/Canada MRA and APEC/Canada MRA)
- Recognized/Listed by FCC (USA)
- All test results contained in this engineering test report are traceable to National Institute of Standards and Technology (NIST)

where,

$\gamma$	Conversion factor; ratio of sensor response in air to response in the dielectric media
$SAR_t$	Thermally-derived SAR [W/Kg] (Eq. 1)
$ E_{tissue} ^2$	RMS E-field level [(V/m) <sup>2</sup> ] induced within the exposed tissue
$PO_{tot\_tissue}$	Probe voltage output measured in the simulated tissue [mV]
$\eta_{E2}$	Sensor Factor to the $ E ^2$ , an intermediately constant, 10.8/3,770 [mV/(V/m) <sup>2</sup> ]
$c$	Specific heat capacity of the simulated tissue [J/Kg/°C]
$\sigma_{@cal}$	Conductivity of the simulated tissue during the calibration procedure [S/m]
$\rho$	Actual mass density of the simulated tissue [Kg/m <sup>3</sup> ]
$T/ t$	Initial rate of tissue heating, before thermal diffusion takes place [°C /sec]

The temperature E-field correlation is illustrated below (for simulated brain tissue) for an example in which the thermal quantities were,

- RF power input = 0.5 [W]
- T = 0.0163 [°C] (from thermistor-base temperature probe)
- $\sigma_{@cal}$  = 0.97 [S/m]
- $\rho$  = 1,200 [Kg/m<sup>3</sup>]
- c = 2,700 [J/Kg/°C]
- t = 30 [sec]

The resulting  $SAR_t$  was (Eq. 1)

$$SAR_t = \frac{2,700 \times 0.0163}{30} = 1.467 \text{ [W/Kg]}$$

In this case the output of the E-field probe when at the same position as the thermistor probe was

$$PO_{tot\_tissue} = 28.5 \text{ [mV]}$$

The calculation of conversion factor ( $\gamma$ ) from (Eq. 3) follows:

$$\gamma = \frac{0.97}{\frac{10.8}{3,770} \times 1,200} \times \frac{28.5}{1.467} = 5.482$$

- Assessed by ITI (UK) Competent Body, NVLAP (USA) Accreditation Body & ACA/AUSTEL (Australia), VCCI (Japan)
- Accredited by Industry Canada (Canada) under ACC-LAB (Europe/Canada MRA and APEC/Canada MRA)
- Recognized/Listed by FCC (USA)
- All test results contained in this engineering test report are traceable to National Institute of Standards and Technology (NIST)

**5.6.5. Data Acquisition Methodology**

**5.6.5.1. E-Field Measurement**

The probe calibration must be current before starting measurements. Instrumentation amplifier batteries must be charged. This can be monitored by observing DC offset voltages. A daily log of the DC offset voltages should be kept for this purpose.

Measurements in the phantom are automatically calculated for each location by summation of the three dipole outputs. Because each dipole produces an output voltage proportional to the square of the electric field component along the dipole, the sum of dipole voltages represents the RMS values for the total electric field. Thus, taking into consideration the amplifier settings and the DC offset voltages, the total electric field strength at a measurement location is as follows. See Appendix C.  $PO_{tot}$  is labeled by the software as measure of values (voltages). The SAR for calculations that are derived from the measure of values are discussed below.

At each measurement point, the program records the output of the three channels:

$$PO_1 = (V_1 - DC_1) \times AS_1 \equiv |E_1|^2 \times \eta_{E2}$$

$$PO_2 = (V_2 - DC_2) \times AS_2 \equiv |E_2|^2 \times \eta_{E2}$$

$$PO_3 = (V_3 - DC_3) \times AS_3 \equiv |E_3|^2 \times \eta_{E2}$$

$$PO_{tot} \equiv |E|^2 \times \eta_{E2} = (|E_1|^2 + |E_2|^2 + |E_3|^2) \times \eta_{E2} = |E_1|^2 \times \eta_{E2} + |E_2|^2 \times \eta_{E2} + |E_3|^2 \times \eta_{E2}$$

$$\equiv PO_1 + PO_2 + PO_3$$

Where,

$V_i$	Actual raw reading of channel i at a measurement point
$DC_i$	Ambient DC offset of channel i at a measurement point
$AS_i$	Amplifier setting of channel i
$\eta_{E2}$	Sensor Factor to the $ E ^2$ , an arbitrary value 10.8/3,770 [mV/(V/m) <sup>2</sup> ]
$PO_i$	Probe output of channel i at a measurement point [mV]
$PO_{tot}$	Total probe output at a measurement point [mV]

**5.6.5.2. Sensitivity( $\zeta$ ) of probe in the simulated tissue**

The sensitivity( $\zeta$ ) of the probe in the simulated tissue is rendered in terms of Sensor Enhancement Factor in the simulated tissue.

$$\zeta = \frac{\sigma_{@meas}}{\eta_{E2} \times \rho \times \gamma} = \frac{\sigma_{@meas}}{\frac{10.8}{3,770} \times 1,000 \times \gamma} = \frac{3,770 \times \sigma_{@meas}}{10,800 \times \gamma} \quad \text{(Eq. 5)}$$

- Assessed by ITI (UK) Competent Body, NVLAP (USA) Accreditation Body & ACA/AUSTEL (Australia), VCCI (Japan)
- Accredited by Industry Canada (Canada) under ACC-LAB (Europe/Canada MRA and APEC/Canada MRA)
- Recognized/Listed by FCC (USA)
- All test results contained in this engineering test report are traceable to National Institute of Standards and Technology (NIST)

Where,

- $\zeta$  Sensitivity of the probe in the simulated tissue [W/Kg/mV]
- $\gamma$  Conversion factor; ratio of sensor response in air to response in the dielectric media
- $\eta_{E2}$  Sensor Factor to the  $|E|^2$ , an arbitrary value 10.8/3,770 [mV/(V/m)<sup>2</sup>]
- $\sigma_{@meas}$  Conductivity of the simulated tissue during the measurement [S/m]
- $\rho$  mass density of the simulated tissue [Kg/m<sup>3</sup>]; 1,000 [Kg/m<sup>3</sup>] is conventionally

chosen.

Therefore, SAR can be yielded from

$$SAR = \zeta \times PO_{tot\_tissue} \tag{Eq. 6}$$

Where,

- $\zeta$  Sensitivity of the probe in the simulated tissue [W/Kg/mV]
- $PO_{tot\_tissue}$  Probe voltage output measured in the simulated tissue [mV]

To continue the example illustrated above,

$$\begin{aligned} \sigma_{@meas} &= 0.99 \text{ [S/m]} \\ PO_{tot\_tissue} &= 11.5 \text{ [mV]} \end{aligned}$$

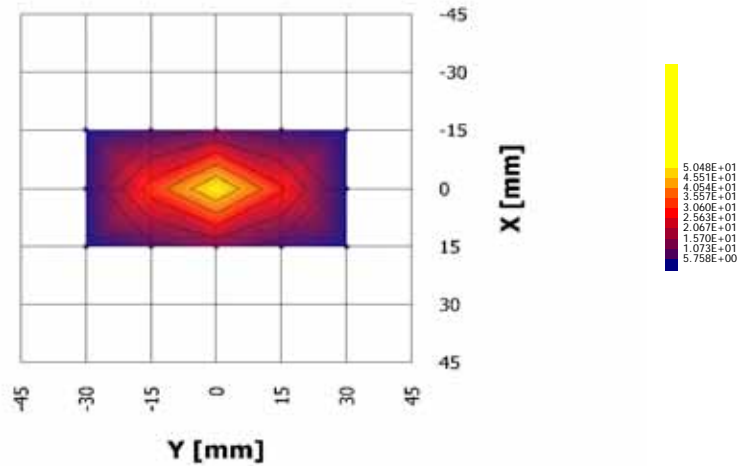
$$\zeta = \frac{3,770 \times \sigma_{@meas}}{10,800 \times \eta} = \frac{3,770 \times 0.99}{10,800 \times 5.482} = 0.063 \text{ [W/Kg/mV]}$$

$$SAR = \zeta \times PO_{tot\_tissue} = 0.063 \times 11.5 = 0.725 \text{ [W/Kg]}$$

**5.6.5.3. SAR Measurement**

The goal of the measurement process is to scan the phantom over a selected area in order to find the region of highest levels of RF energy and then to obtain a single value for the peak spatial-average of SAR over a volume that would contain one gram (in the shape of a cube) of biological tissue. The test procedure, of course, measures SAR in the simulated tissue.

- Assessed by ITI (UK) Competent Body, NVLAP (USA) Accreditation Body & ACA/AUSTEL (Australia), VCCI (Japan)
- Accredited by Industry Canada (Canada) under ACC-LAB (Europe/Canada MRA and APEC/Canada MRA)
- Recognized/Listed by FCC (USA)
- All test results contained in this engineering test report are traceable to National Institute of Standards and Technology (NIST)



**Figure 0 Area scan**

The software request the user to move the probe to locations at two extreme corners of a rectangle that encloses the area to be scanned. An arbitrary origin and the spatial resolution for the scan are also specified. Under program control, the scan is performed automatically by the robot-guided probe.

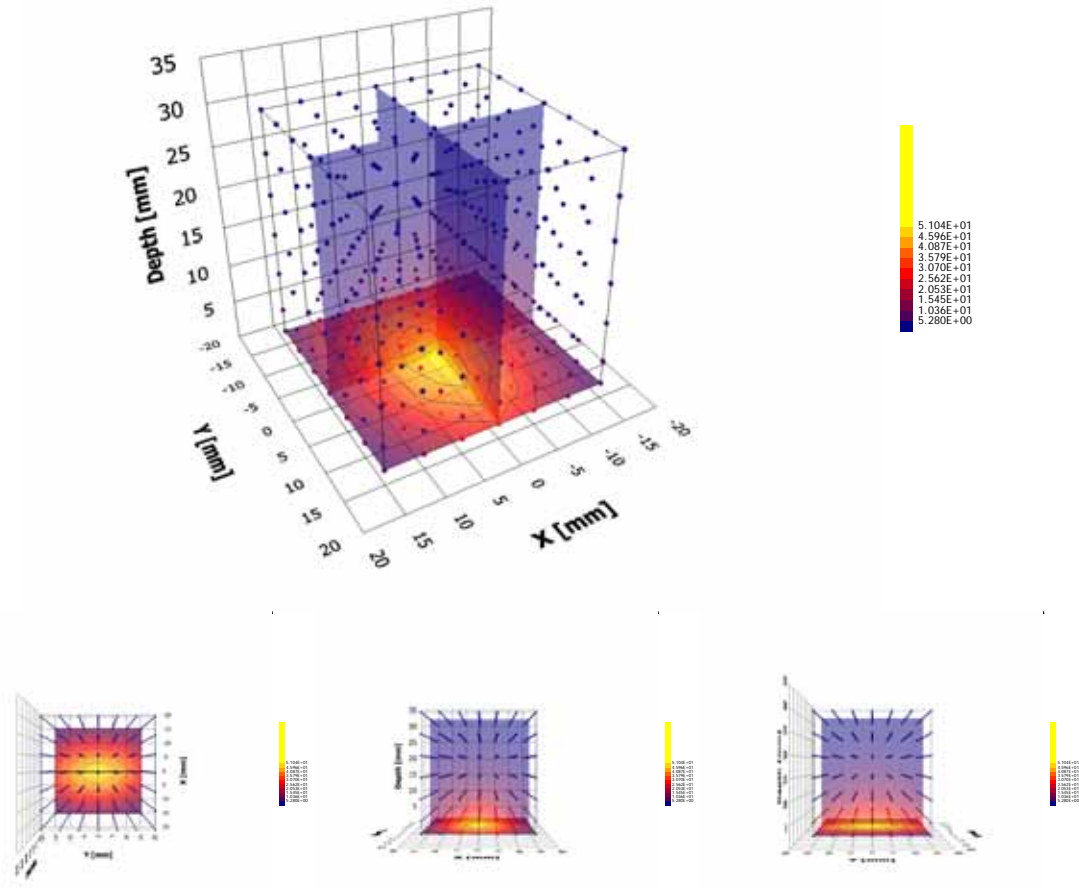
**ULTRATECH GROUP OF LABS**

3000 Bristol Circle, Oakville, Ontario, Canada L6H 6G4  
Tel. #: 905-829-1570, Fax. #: 905-829-8050, Email: vic@ultratech-labs.com, Website: http://www.ultratech-labs.com

**File #: ICOM-189-SAR**  
**October 30, 2008**

- Assessed by ITI (UK) Competent Body, NVLAP (USA) Accreditation Body & ACA/AUSTEL (Australia), VCCI (Japan)
- Accredited by Industry Canada (Canada) under ACC-LAB (Europe/Canada MRA and APEC/Canada MRA)
- Recognized/Listed by FCC (USA)
- All test results contained in this engineering test report are traceable to National Institute of Standards and Technology (NIST)





**Figure 0 Zoom Scan**

The fine resolution volume scan region is centered at the peak SAR locations determined by the interpolated (cubic spline) data from the area scan measurements. The number of measurement point required in a zoom scan is defined to provide an accurate one-gram averaged SAR in terms of both the number of points ( $PT_x \times PT_y \times PT_z$ ) and the size ( $SZ_x[\text{mm}] \times SZ_y[\text{mm}] \times SZ_z[\text{mm}]$ ) of the cubic. For one-gram SAR,  $(5 \times 5 \times 7)$  and  $(28[\text{mm}] \times 28[\text{mm}] \times 30[\text{mm}])$  is preferred to select below 1 GHz. The zoom scan region extends in each direction for at least 1.5 times the linear dimensions of 1- or 10-gram cube of tissue from each peak. The zoom scan spatial resolution is interpolated down to SAR values on a 1mm grid by using the tri-linear interpolation algorithm.

**ULTRATECH GROUP OF LABS**

3000 Bristol Circle, Oakville, Ontario, Canada L6H 6G4  
 Tel. #: 905-829-1570, Fax. #: 905-829-8050, Email: vic@ultratech-labs.com, Website: http://www.ultratech-labs.com

**File #: ICOM-189-SAR**  
**October 30, 2008**

- Assessed by ITI (UK) Competent Body, NVLAP (USA) Accreditation Body & ACA/AUSTEL (Australia), VCCI (Japan)
- Accredited by Industry Canada (Canada) under ACC-LAB (Europe/Canada MRA and APEC/Canada MRA)
- Recognized/Listed by FCC (USA)
- All test results contained in this engineering test report are traceable to National Institute of Standards and Technology (NIST)

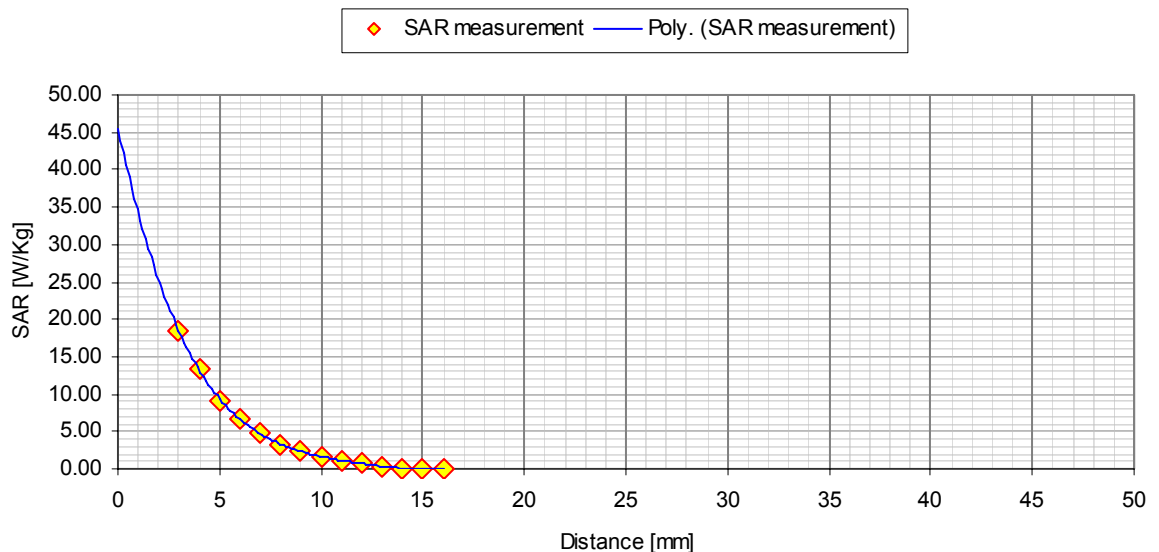
The peak field values near the surface of a homogeneous phantom are usually not measurable because the sensors in a field probe are located at 2-4 mm behind the tip of the probe and the measurement point is defined at the geometric center of the sensors where the calibration is defined. These SAR values are computed by extrapolating the closest measured points to the surface of the phantom to determine the highest one-gram averaged SAR. The extrapolation coefficients are determined with a multi-order curve-fitting algorithm. Generally the 4-th order polynomial least-square fit is sufficient to extrapolate to the surface if the number of the valid measurements, that are non-zero, along the probe axis is greater than 4.

The interpolated and extrapolated SAR values from the zoom scan measurements are integrated in the shape of 1- or 10-gram cube then traversed to determine the highest peak spatial-average SAR in the zoom scan region.

This peak spatial-averaged SAR is reported as SAR [W/kg] for compliance.

**5.6.5.4. Data Extrapolation and boundary effect**

The distance from the center of the sensor (diode) to the end of the protective tube is called the ‘probe offset’ or ‘sensor offset’. To compensate we use a multi-order polynomial least-square curve fitting to obtain the peak surface value from the voltages measured at the distance from the inner surface of the phantom. The field is measured as close as possible to the phantom’s surface and every pre-defined separation distance (1 [mm] to 5 [mm]) along the probe axis (z) for a distance of at least 50 mm until they are not measurable. The appropriate curve is obtained from all the points measured and used to define an exponential decay of the energy density versus depth.



**Figure 5.6.5.4. Exponential decay of the energy density versus depth**

Boundary effects arise when the tip of an electric field probe approaches the interface between two dielectric media. Under these conditions, the external field is strongly perturbed by the superposition of a scattered field from the probe. The effect of the boundary on the peak spatial-average SAR values strongly depends on the

- Assessed by ITI (UK) Competent Body, NVLAP (USA) Accreditation Body & ACA/AUSTEL (Australia), VCCI (Japan)
- Accredited by Industry Canada (Canada) under ACC-LAB (Europe/Canada MRA and APEC/Canada MRA)
- Recognized/Listed by FCC (USA)
- All test results contained in this engineering test report are traceable to National Institute of Standards and Technology (NIST)

probe dimensions, especially the diameter of the tip of the probe. It is known that the error due to boundary effects is very small if the distance between the probe tip and the surface is greater than half the probe diameter. Therefore the first one or two measurements at the vicinity to the phantom surface are excluded for evaluating the exponential decay curve in order to compensate for the boundary effect.

### 5.6.6. Determining the Heat Capacity of Simulated Tissue

#### 5.6.6.1. Instruments and Materials

- Calibrated differential thermometer (Vitek or BAT-8 or equivalent)
- Two identical 500 ml containers
- A thermally insulated vessel (thick styrofoam, with a form fitting hole for one container)
- Hot and cold tap water
- Solution under test
- Hot plate
- Temperature vs. time (chart recorder, or data logger)

#### 5.6.6.2. Method

Heat can be propagated by conduction, convection and radiation. In the case of liquids heated from below, gravity convection is the main and predominant heating mechanism of the fluid mass.

Obtain two containers that can be rapidly heated (e.g. glass or suitable plastic). Fill one container with 250 ml of water, the other with the same mass of simulated tissue. The initial temperature of the water should be the same as that of the simulated tissue ( $\pm 1^\circ\text{C}$ ). Since we are dealing with heating by electromagnetic sources at ambient temperature, it is essential that we eliminate the chance of any direct infrared heating of the temperature sensor. To ensure this, position the tip of the sensor 2 mm from the bottom of the center of the container. Turn on the heat source and wait at least 5 minutes for its temperature to stabilize. Record the initial temperature of the water. Place the container of water 5 mm above the center of the hot plate and monitor the temperature increase.

After 30 seconds of heating, the water temperature should have increased by at least  $5^\circ\text{C}$ . Record the time and temperature. Remove the container from the heat source and place it in the thermally insulated vessel. Stir the liquid thoroughly and record the steady state temperature 1-2 minutes after stirring.

Repeat the above procedure using the container of simulated tissue. Ensure that the container is placed on the same area of the hot plate, is heated for the identical length of time, and the steady state temperature is recorded after the identical time interval.

Since the heat capacity of water is  $C_w = 1,000 \text{ [cal/Kg}^\circ\text{C]}$  or  $4,189 \text{ [J/Kg}^\circ\text{C]}$  with excellent approximation ( $\sim 1\%$ ) in the temperature range of interest, the heat capacity ( $C_s$ ) of the solution is given by:

---

## ULTRATECH GROUP OF LABS

3000 Bristol Circle, Oakville, Ontario, Canada L6H 6G4  
 Tel. #: 905-829-1570, Fax. #: 905-829-8050, Email: vic@ultratech-labs.com, Website: http://www.ultratech-labs.com

File #: ICOM-189-SAR  
 October 30, 2008

- Assessed by ITI (UK) Competent Body, NVLAP (USA) Accreditation Body & ACA/AUSTEL (Australia), VCCI (Japan)
- Accredited by Industry Canada (Canada) under ACC-LAB (Europe/Canada MRA and APEC/Canada MRA)
- Recognized/Listed by FCC (USA)
- All test results contained in this engineering test report are traceable to National Institute of Standards and Technology (NIST)

$$C_s = C_w \cdot \frac{\Delta T_w}{\Delta T_s}$$

where  $T_w$  is the temperature increase of water and  $T_s$  the temperature increase of the solution. The ratio of the values,  $\frac{\Delta T_w}{\Delta T_s}$ , should be the same (within the sensitivity of the thermometer) at the end of the heating and stirring. This ensures that the liquids have been uniformly heated.

### 5.6.6.3. *Rationale*

$$C \cdot \Delta T = \text{Heat\_Flow} \cdot \text{Time} = \text{Total\_Heating\_Energy}$$

If the heat flow, sample mass, and absorption (heat transfer) are the same for both liquids, then:

$$C_w \cdot \Delta T_w = C_s \cdot \Delta T_s$$

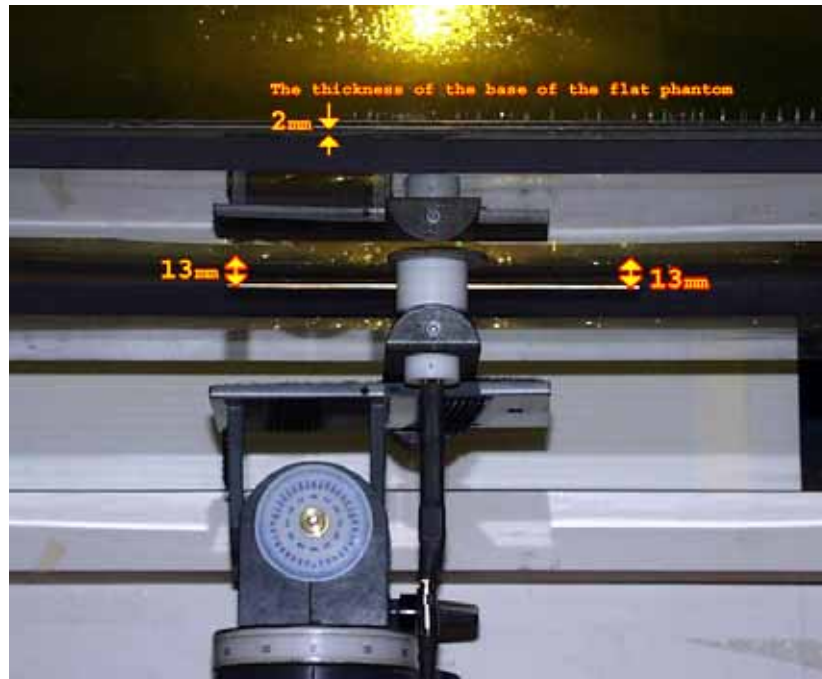
The heat flow and total heating are kept constant by using the same source for the same amount of time. If the heat transfer mechanisms for the two liquids are about the same, with insignificant differences in convective and conductive characteristics, then any differences in temperature increase are a direct measure of the specific heat capacity, C.

- Assessed by ITI (UK) Competent Body, NVLAP (USA) Accreditation Body & ACA/AUSTEL (Australia), VCCI (Japan)
- Accredited by Industry Canada (Canada) under ACC-LAB (Europe/Canada MRA and APEC/Canada MRA)
- Recognized/Listed by FCC (USA)
- All test results contained in this engineering test report are traceable to National Institute of Standards and Technology (NIST)

## 5.7. SAR MEASUREMENT SYSTEM VERIFICATION

### 5.7.1. Standard Source

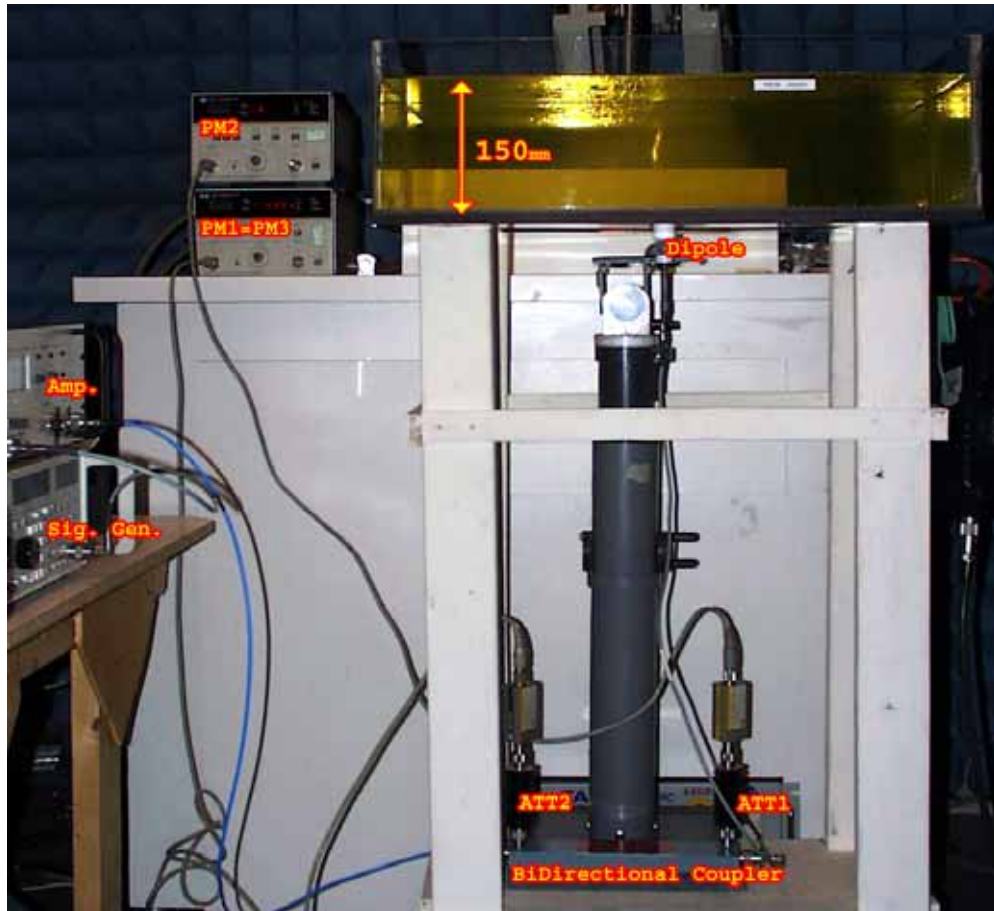
A half-wave dipole is positioned below the bottom of the phantom and centered with its axis parallel to the longest side of the phantom. The distance between the liquid filled phantom bottom surface and the center of the dipole axis,  $s$ , is chosen as specified IEEE 1528 at the specific test frequency (i.e. 15 mm at 835 MHz). A low loss and low dielectric constant spacer is used to establish the correct distance between the top surface of the dipole and the bottom surface of the phantom.



- Assessed by ITI (UK) Competent Body, NVLAP (USA) Accreditation Body & ACA/AUSTEL (Australia), VCCI (Japan)
- Accredited by Industry Canada (Canada) under ACC-LAB (Europe/Canada MRA and APEC/Canada MRA)
- Recognized/Listed by FCC (USA)
- All test results contained in this engineering test report are traceable to National Institute of Standards and Technology (NIST)

**5.7.2. Standard Source Input Power Measurement**

The system validation is performed as shown below or in Figure 7.1 in IEEE 1528.



First the power meter PM1 (including attenuator Att1) is connected to the cable to measure the forward power at the location of the dipole connector (X). The signal generator is adjusted for the desired forward power at the dipole connector (taking into account the attenuation of Att1) as read by power meter PM2. After connecting the cable to the dipole, the signal generator is readjusted for the same reading at power meter PM2. If the signal generator does not allow adjustment in 0.01dB steps, the remaining difference at PM2 must be taken into consideration. PM3 records the reflected power from the dipole to ensure that the value is not changed from the previous value. The reflected power was verified to be at least 20dB below the forward power.

- Assessed by ITI (UK) Competent Body, NVLAP (USA) Accreditation Body & ACA/AUSTEL (Australia), VCCI (Japan)
- Accredited by Industry Canada (Canada) under ACC-LAB (Europe/Canada MRA and APEC/Canada MRA)
- Recognized/Listed by FCC (USA)
- All test results contained in this engineering test report are traceable to National Institute of Standards and Technology (NIST)

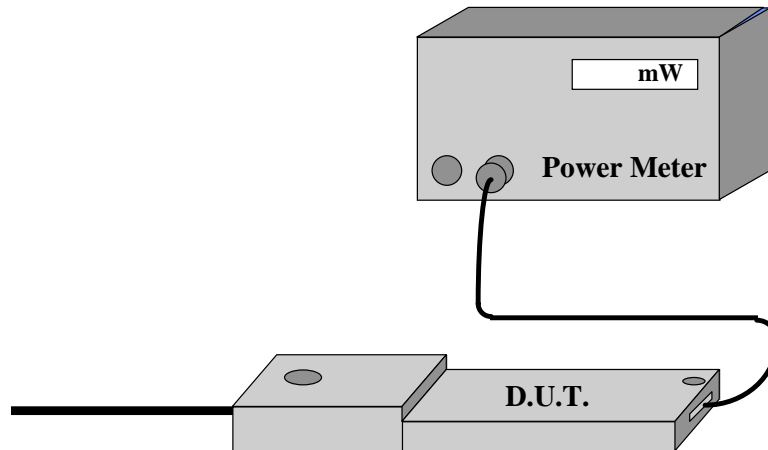
**5.7.3. System Validation Procedure**

A complete 1g-averaged SAR measurement is performed. The measured 1g-averaged SAR value is normalized to a forward power of 1W to a half-wave dipole and compared with the reference SAR value for the reference dipole and flat phantom shown in columns 2 and 3 of Table 7.1 in IEEE 1528.

**5.8. POWER MEASUREMENT**

Whenever possible, a conducted power measurement is performed. To accomplish this, we utilize a fully charged battery, a calibrated power meter and a cable adapter provided by the manufacturer. The data of the cable and related circuit losses are also provided by the manufacturer. The power measurement is then performed across the operational band and the channel with the highest output power is recorded.

Power measurement is performed before and after the SAR to verify if the battery was delivering full power at the time of testing. A difference in output power would determine a need for battery replacement and to repeat the SAR test.



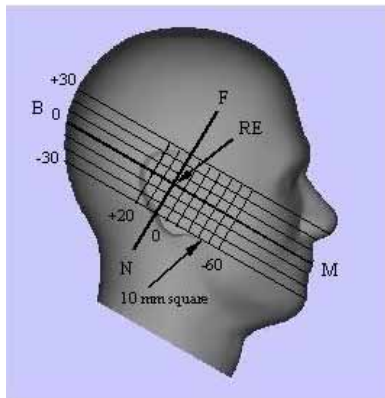
**Figure 5.8. Measured Power + Cable and Switching Mechanism Loss**

- Assessed by ITI (UK) Competent Body, NVLAP (USA) Accreditation Body & ACA/AUSTEL (Australia), VCCI (Japan)
- Accredited by Industry Canada (Canada) under ACC-LAB (Europe/Canada MRA and APEC/Canada MRA)
- Recognized/Listed by FCC (USA)
- All test results contained in this engineering test report are traceable to National Institute of Standards and Technology (NIST)

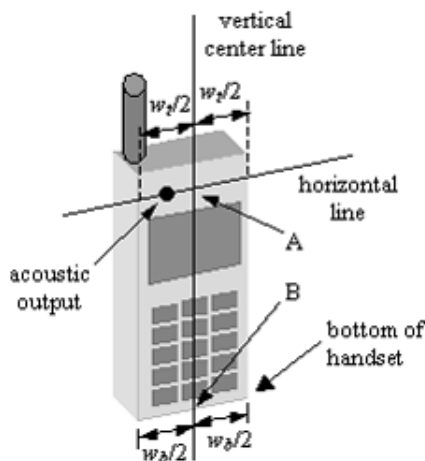
**5.9. POSITIONING OF D.U.T.**

The clear SAM phantom shell have been previously marked with a highly visible grid with a defined centre line, so it can easily be seen through the liquid simulated tissue. In the case of testing a cellular phone, this line is connecting the ear channel with the corner of the lips. The D.U.T. is then placed by centering the speaker with the ear channel and the center of the radio width with the corner of the mouth.

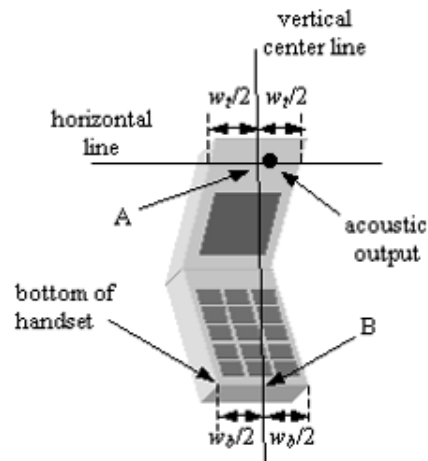
For HAND HELD devices (push-to-talk), or any other type of wireless transmitters positioned in front of the face, the D.U.T. will be positioned 2.5cm distance from a flat phantom to simulate the frontal facial position in use. All body-worn operating configurations are tested using a flat phantom. The length and width of the phantom is at least twice the corresponding dimensions of the test device, including its antenna.



**Figure 5.9.a. Side view of the phantom showing relevant marking**



**Figure 5.9.b. Handset vertical and horizontal reference lines – fixed case**



**Figure 5.9.c. Handset vertical and horizontal reference lines – “clam-shell”**

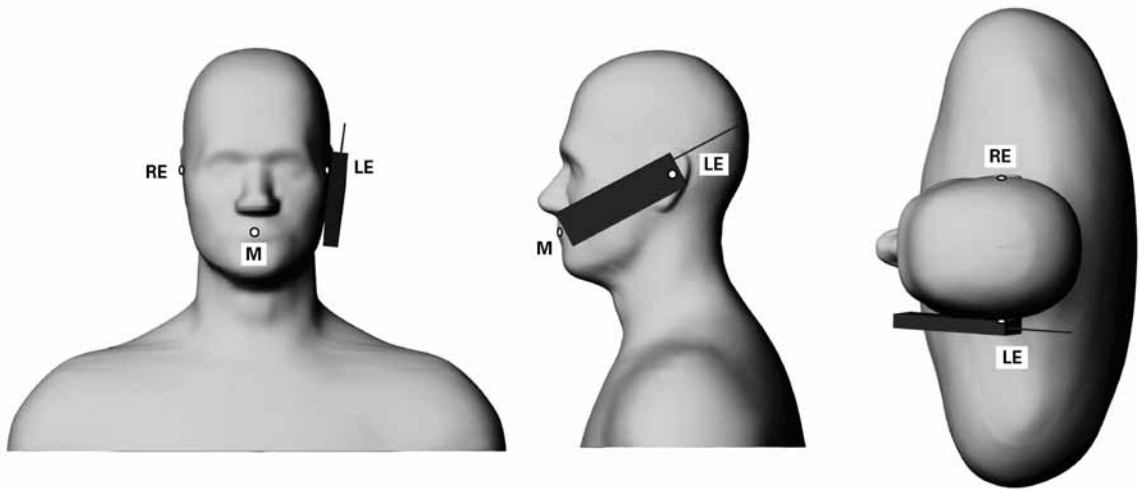
**ULTRATECH GROUP OF LABS**

3000 Bristol Circle, Oakville, Ontario, Canada L6H 6G4  
 Tel. #: 905-829-1570, Fax. #: 905-829-8050, Email: vic@ultratech-labs.com, Website: http://www.ultratech-labs.com

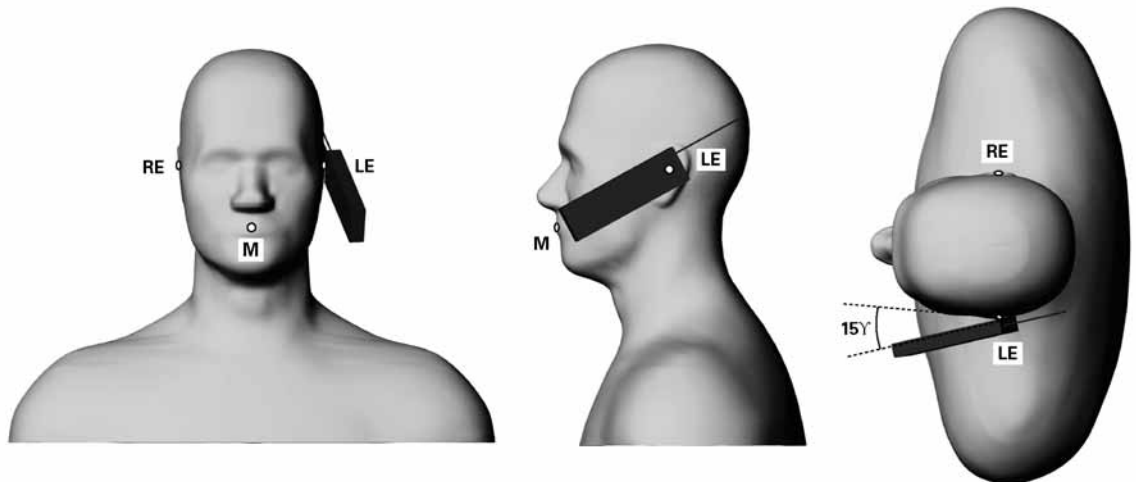
**File #: ICOM-189-SAR  
 October 30, 2008**

- Assessed by ITI (UK) Competent Body, NVLAP (USA) Accreditation Body & ACA/AUSTEL (Australia), VCCI (Japan)
- Accredited by Industry Canada (Canada) under ACC-LAB (Europe/Canada MRA and APEC/Canada MRA)
- Recognized/Listed by FCC (USA)
- All test results contained in this engineering test report are traceable to National Institute of Standards and Technology (NIST)





**Figure 5.9.d. Phone position 1, “cheek” or “touch” position.** The reference points for the right ear (RE), left ear (LE) and mouth (M), which define the reference plane for phone positioning, are indicated. The shoulders are shown for illustration purposes only.



**Figure 5.9.e. Phone position 2, “tilted position.”** The reference points for the right ear (RE), left ear (LE) and mouth (M), which define the reference plane for phone positioning, are indicated. The shoulders are shown for illustration purposes only.

The handset holder is mainly made of PVC and contains no metallic component at all in order to minimize field perturbation. Velcro and elastic band were used to attach the D.U.T. on the plate of handset holder.

**ULTRATECH GROUP OF LABS**

3000 Bristol Circle, Oakville, Ontario, Canada L6H 6G4  
 Tel. #: 905-829-1570, Fax. #: 905-829-8050, Email: vic@ultratech-labs.com, Website: http://www.ultratech-labs.com

**File #: ICOM-189-SAR**  
**October 30, 2008**

- Assessed by ITI (UK) Competent Body, NVLAP (USA) Accreditation Body & ACA/AUSTEL (Australia), VCCI (Japan)
- Accredited by Industry Canada (Canada) under ACC-LAB (Europe/Canada MRA and APEC/Canada MRA)
- Recognized/Listed by FCC (USA)
- All test results contained in this engineering test report are traceable to National Institute of Standards and Technology (NIST)

## **5.10. SAR MEASUREMENT UNCERTAINTY**

This uncertainty analysis covers the 3D-EMC Laboratory test procedure for Specific Absorption Rate (SAR) associated with wireless telephones and similar devices.

### **Standards Covered Are:**

WGMTE 96/4 - Secretary SC211/B

FCC 96-326, ET Docket No. 93-62

Industry Canada RSS 102

ACA Radio communications (Electromagnetic Radiation – Human Exposure) Amendment Standard 2000 (No. 1)

The laboratory test procedure, and this uncertainty analysis, may be used to cover all standards above. It is based on test equipment and procedures specified by 3D-EMC Laboratories, Inc. located in Ft. Lauderdale, Florida.

---

### **ULTRATECH GROUP OF LABS**

3000 Bristol Circle, Oakville, Ontario, Canada L6H 6G4

Tel. #: 905-829-1570, Fax. #: 905-829-8050, Email: vic@ultratech-labs.com, Website: <http://www.ultratech-labs.com>

**File #: ICOM-189-SAR**

**October 30, 2008**

- Assessed by ITI (UK) Competent Body, NVLAP (USA) Accreditation Body & ACA/AUSTEL (Australia), VCCI (Japan)
- Accredited by Industry Canada (Canada) under ACC-LAB (Europe/Canada MRA and APEC/Canada MRA)
- Recognized/Listed by FCC (USA)
- *All test results contained in this engineering test report are traceable to National Institute of Standards and Technology (NIST)*

**5.10.1. Measurement Uncertainty**

**5.10.1.1. Measurement Uncertainty evaluation for handset SAR test**

<b>a</b>	<b>b</b>	<b>c</b>	<b>d</b>	<b>e = f(d,k)</b>	<b>F</b>	<b>g</b>	<b>h = c x f / e</b>	<b>i = c x g / e</b>	<b>k</b>
<b>Uncertainty Component</b>	<b>Sec.</b>	<b>Tol. ( % )</b>	<b>Prob. Dist.</b>	<b>Div.</b>	<b>c<sub>i</sub> (1-g)</b>	<b>c<sub>i</sub> (10-g)</b>	<b>1-g u<sub>i</sub> ( % )</b>	<b>10-g u<sub>i</sub> ( % )</b>	<b>v<sub>i</sub></b>
<b>Measurement System</b>									
Probe Calibration	E1.1	3.0	N	1	1	1	3.0	3.0	
Axial Isotropy	E1.2	5.0	R	3	0.7	0.7	2.0	2.0	
Hemispherical Isotropy	E1.2	8.0	R	3	1	1	4.6	4.6	
Boundary Effect	E1.3	10.0	R	3	1	1	5.8	5.8	
Linearity	E1.4	4.2	R	3	1	1	2.4	2.4	
System Detection Limits	E1.5	2.0	R	3	1	1	1.2	1.2	
Readout Electronics	E1.6	1.0	N	1	1	1	1.0	1.0	
Response Time	E1.7	1.5	R	3	1	1	0.9	0.9	
Integration Time	E1.8	2.0	R	3	1	1	1.2	1.2	
RF Ambient Conditions	E5.1	3.0	R	3	1	1	1.7	1.7	
Probe Positioner Mechanical Tolerance	E5.2	1.0	R	3	1	1	0.6	0.6	
Probe Positioning with respect to Phantom Shell	E5.3	3.0	R	3	1	1	1.7	1.7	
Extrapolation, interpolation and Integration Algorithms for Max. SAR Evaluation	E4.2	3.5	R	3	1	1	2.0	2.0	
<b>Test sample Related</b>									
Test Sample Positioning	E3.2.1	7.5	N	1	1	1	7.5	7.5	11
Device Holder Uncertainty	E3.1.1	6.5	N	1	1	1	6.5	6.5	8
Output Power Variation - SAR drift measurement	5.6.2	5.0	R	3	1	1	2.9	2.9	
<b>Phantom and Tissue Parameters</b>									
Phantom Uncertainty (shape and thickness tolerances)	E2.1	4.0	R	3	1	1	2.3	2.3	
Liquid Conductivity Target - tolerance	E2.2	5.0	R	3	0.7	0.5	2.0	1.4	
Liquid Conductivity - measurement uncertainty	E2.2	4.0	R	3	0.7	0.5	1.6	1.2	
Liquid Permittivity Target tolerance	E2.2	5.0	R	3	0.6	0.5	1.7	1.4	
Liquid Permittivity - measurement uncertainty	E2.2	4.0	R	3	0.6	0.5	1.4	1.2	
<b>Combined Standard Uncertainty</b>			RSS				14.3	14.2	
<b>Expanded Uncertainty</b> (95% confidence interval)							<b>28.5</b>	<b>28.3</b>	

**ULTRATECH GROUP OF LABS**

3000 Bristol Circle, Oakville, Ontario, Canada L6H 6G4  
 Tel. #: 905-829-1570, Fax. #: 905-829-8050, Email: vic@ultratech-labs.com, Website: http://www.ultratech-labs.com

**File #: ICOM-189-SAR**  
**October 30, 2008**

- Assessed by ITI (UK) Competent Body, NVLAP (USA) Accreditation Body & ACA/AUSTEL (Australia), VCCI (Japan)
- Accredited by Industry Canada (Canada) under ACC-LAB (Europe/Canada MRA and APEC/Canada MRA)
- Recognized/Listed by FCC (USA)
- All test results contained in this engineering test report are traceable to National Institute of Standards and Technology (NIST)

**5.10.1.2. Measurement Uncertainty for System Performance Check**

a	b	c	d	e = f(d,k)	f	g	h = c x f / e	i = c x g / e	k
Uncertainty Component	Sec.	Tol. ( %)	Prob. Dist.	Div.	c <sub>i</sub> (1-g)	c <sub>i</sub> (10-g)	1-g u <sub>i</sub> ( %)	10-g u <sub>i</sub> ( %)	v <sub>i</sub> or v <sub>eff</sub>
<b>Measurement System</b>									
Probe Calibration	E1.1	3.0	N	1	1	1	3.0	3.0	
Axial Isotropy	E1.2	5.0	R	3	0.7	0.7	2.0	2.0	
Hemispherical Isotropy	E1.2	8.0	R	3	1	1	4.6	4.6	
Boundary Effect	E1.3	10.0	R	3	1	1	5.8	5.8	
Linearity	E1.4	4.2	R	3	1	1	2.4	2.4	
System Detection Limits	E1.5	2.0	R	3	1	1	1.2	1.2	
Readout Electronics	E1.6	1.0	N	1	1	1	1.0	1.0	
Response Time	E1.7	1.5	R	3	1	1	0.9	0.9	
Integration Time	E1.8	2.0	R	3	1	1	1.2	1.2	
RF Ambient Conditions	E5.1	3.0	R	3	1	1	1.7	1.7	
Probe Positioner Mechanical Tolerance	E5.2	0.4	R	3	1	1	0.2	0.2	
Probe Positioning with respect to Phantom Shell	E5.3	3.0	R	3	1	1	1.7	1.7	
Extrapolation, interpolation and Integration Algorithms for Max. SAR Evaluation	E4.2	3.5	R	3	1	1	2.0	2.0	
<b>Dipole</b>									
Dipole Axis to Liquid Distance	7, X3.2	2.0	R	3	1	1	1.2	1.2	
Input Power and SAR Drift Measurement	7, 5.6.2	3.0	R	3	1	1	1.7	1.7	
<b>Phantom and Tissue Parameters</b>									
Phantom Uncertainty - shell thickness tolerance	E2.1	4.0	R	3	1	1	2.3	2.3	
Liquid Conductivity – deviation from target values	E2.2	5.0	R	3	0.7	0.5	2.0	1.4	
Liquid Conductivity - measurement uncertainty	E2.2	4.0	R	3	0.7	0.5	1.6	1.2	
Liquid Permittivity – deviation from target values	E2.2	5.0	R	3	0.6	0.5	1.7	1.4	
Liquid Permittivity - measurement uncertainty	E2.2	4.0	R	3	0.6	0.5	1.4	1.2	
<b>Combined Standard Uncertainty</b>			RSS				10.0	9.9	
<b>Expanded Uncertainty (95% confidence interval)</b>							<b>20.1</b>	<b>19.8</b>	

**ULTRATECH GROUP OF LABS**

3000 Bristol Circle, Oakville, Ontario, Canada L6H 6G4  
 Tel. #: 905-829-1570, Fax. #: 905-829-8050, Email: vic@ultratech-labs.com, Website: http://www.ultratech-labs.com

**File #: ICOM-189-SAR**  
**October 30, 2008**

- Assessed by ITI (UK) Competent Body, NVLAP (USA) Accreditation Body & ACA/AUSTEL (Australia), VCCI (Japan)
- Accredited by Industry Canada (Canada) under ACC-LAB (Europe/Canada MRA and APEC/Canada MRA)
- Recognized/Listed by FCC (USA)
- All test results contained in this engineering test report are traceable to National Institute of Standards and Technology (NIST)

## 5.11. RECOMMENDED CAUTION STATEMENTS TO BE INCLUDED IN USERS MANUAL

In order for users to be aware of the body-worn operating requirements for meeting RF exposure compliance, operating instructions and caution statements should be included in the manual. The information should allow users to make informed decisions on the type of body-worn accessories and operating configurations that are appropriate for the device. The following are *examples* of typical statements that provide end-users with the necessary information about body-worn accessories:

Example 1. For a product that has the potential to be used in a body worn configuration and has been tested and certified with a specific accessory device(s):

**“For body worn operation, this phone has been tested and meets the FCC RF exposure guidelines when used with the (*manufacturer name*) accessories supplied or designated for this product. Use of other accessories may not ensure compliance with FCC RF exposure guidelines. ”**

Example 2. For a product that has the potential to be used in a body worn configuration and has not been certified with a specific accessory device(s):

“For body worn operation, this phone has been tested and meets FCC RF exposure guidelines when used with an accessory that contains no metal and that positions the handset a minimum of (specified distance) from the body. Use of other accessories may not ensure compliance with FCC RF exposure guidelines.”

Example 3. For a product that has the potential to be used in a body worn configuration with future manufacturer designed accessories:

“For body worn operation, this phone has been tested and meets the FCC RF exposure guidelines when used with a (*manufacturer name*) accessory designated for this product or when used with an accessory that contains no metal and that positions the handset a minimum of (specified distance) from the body.”

---

### ULTRATECH GROUP OF LABS

3000 Bristol Circle, Oakville, Ontario, Canada L6H 6G4  
Tel. #: 905-829-1570, Fax. #: 905-829-8050, Email: vic@ultratech-labs.com, Website: http://www.ultratech-labs.com

File #: ICOM-189-SAR  
October 30, 2008

- Assessed by ITI (UK) Competent Body, NVLAP (USA) Accreditation Body & ACA/AUSTEL (Australia), VCCI (Japan)
- Accredited by Industry Canada (Canada) under ACC-LAB (Europe/Canada MRA and APEC/Canada MRA)
- Recognized/Listed by FCC (USA)
- All test results contained in this engineering test report are traceable to National Institute of Standards and Technology (NIST)

## EXHIBIT 6. SAR MEASUREMENT\*

### 6.1. HEAD CONFIGURATION

#### 6.1.1. Head-front; PTT

#	Configuration	Antenna Position	Frequency [MHz]	Channel	SAR <sub>local</sub> Before [W/Kg]	SAR <sub>local</sub> After [W/Kg]	MAX SAR <sub>1g</sub> [W/Kg]
*	General Population/Uncontrolled Exposure Category Limit						1.6
01	Li-ion rechargeable battery pack (M/N: BP-252)	FIX	156.025	Low	0.09	0.08	0.30
02		FIX	157.425	High			-

\* If the SAR measured at the middle channel for each test configuration is at least 3.0 dB lower than the SAR limit, testing at the high and low channels is optional for such test configuration(s).

### ULTRATECH GROUP OF LABS

3000 Bristol Circle, Oakville, Ontario, Canada L6H 6G4  
 Tel. #: 905-829-1570, Fax. #: 905-829-8050, Email: vic@ultratech-labs.com, Website: http://www.ultratech-labs.com

File #: ICOM-189-SAR  
 October 30, 2008

- Assessed by ITI (UK) Competent Body, NVLAP (USA) Accreditation Body & ACA/AUSTEL (Australia), VCCI (Japan)
- Accredited by Industry Canada (Canada) under ACC-LAB (Europe/Canada MRA and APEC/Canada MRA)
- Recognized/Listed by FCC (USA)
- All test results contained in this engineering test report are traceable to National Institute of Standards and Technology (NIST)

**SPECIFIC ABSORPTION RATE (SAR)**

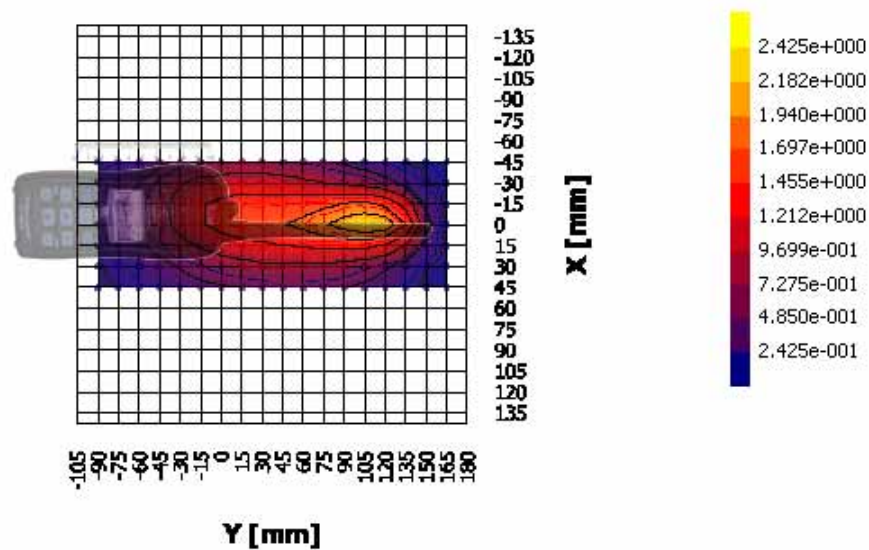
IEEE C95.1-1992, FCC OET Bulletin 65 (Supplement C), Industry Canada RSS-102(Issue 2) and ACA Radio communications (Electromagnetic Radiation – Human Exposure) Amendment Standard 2000 (No. 1)

VHF MARINE TRANSCEIVER M/N: IC-M36

FCC ID: AFJ316800

**6.1.1.1. Li-Ion battery pack (M/N: BP-252); #01**

Test date [MM/DD/YYYY]	10/20/2008
Test by	Steven Lu
Room temperature [°C]	22
Room humidity [%]	40
Simulated tissue temperature [°C]	22
Separation distance, d [mm]	15
Test frequency [MHz]	156.025
E-field Probe	M/N: ET20, S/N: 03-MAY-0027, Sensor Offset: 2.1 mm
Sensor Factor ( $\eta_{Pd}$ ) [mV/(mW/cm <sup>2</sup> )]	10.8
Amplifier Settings (AS <sub>1</sub> , AS <sub>2</sub> , AS <sub>3</sub> )	0.0111378017, 0.0102808136, 0.0105862287
Tissue Type	Brain
Measured conductivity [S/m]	0.74 (-2.1 %)
Measured dielectric constant	53.7 (+2.7 %)
Conversion Factor ( )	6.550
Sensitivity ( ) [W/Kg/mV]	3.944E-02
Source-(or Usage-)Based Time-Average Factor	0.5
Measurement Area Specification (X × Y)	60 mm × 45 mm; Resolution: 15 mm × 15 mm
Measurement Volume Specification (X × Y × Z)	5 pts × 5 pts × 7 pts, 58 mm × 58 mm × 30 mm; Resolution: 7 mm × 7 mm × 5 mm
SAR <sub>1g</sub> [W/Kg]	0.45



**ULTRATECH GROUP OF LABS**

3000 Bristol Circle, Oakville, Ontario, Canada L6H 6G4  
 Tel. #: 905-829-1570, Fax. #: 905-829-8050, Email: vic@ultratech-labs.com, Website: http://www.ultratech-labs.com

File #: ICOM-189-SAR  
 October 30, 2008

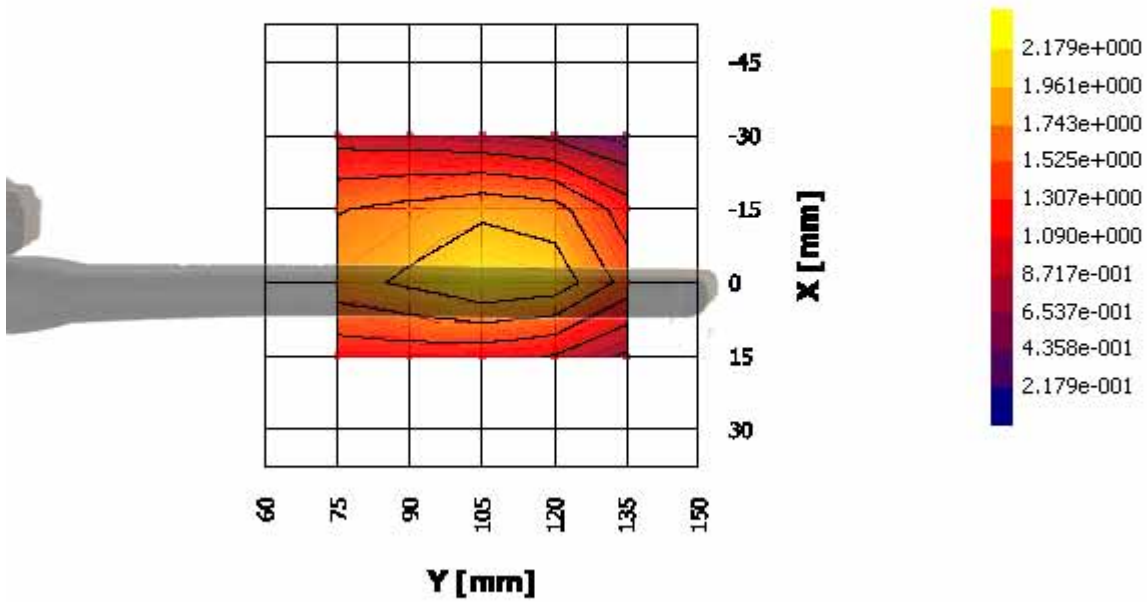
- Assessed by ITI (UK) Competent Body, NVLAP (USA) Accreditation Body & ACA/AUSTEL (Australia), VCCI (Japan)
- Accredited by Industry Canada (Canada) under ACC-LAB (Europe/Canada MRA and APEC/Canada MRA)
- Recognized/Listed by FCC (USA)
- All test results contained in this engineering test report are traceable to National Institute of Standards and Technology (NIST)

**SPECIFIC ABSORPTION RATE (SAR)**

IEEE C95.1-1992, FCC OET Bulletin 65 (Supplement C), Industry Canada RSS-102(Issue 2) and ACA Radio communications (Electromagnetic Radiation – Human Exposure) Amendment Standard 2000 (No. 1)

**VHF MARINE TRANSCEIVER M/N: IC-M36**

**FCC ID: AFJ316800**



Remark: Local SAR value in the above plot did not reflect 50% of user-based time-average correction for PTT.

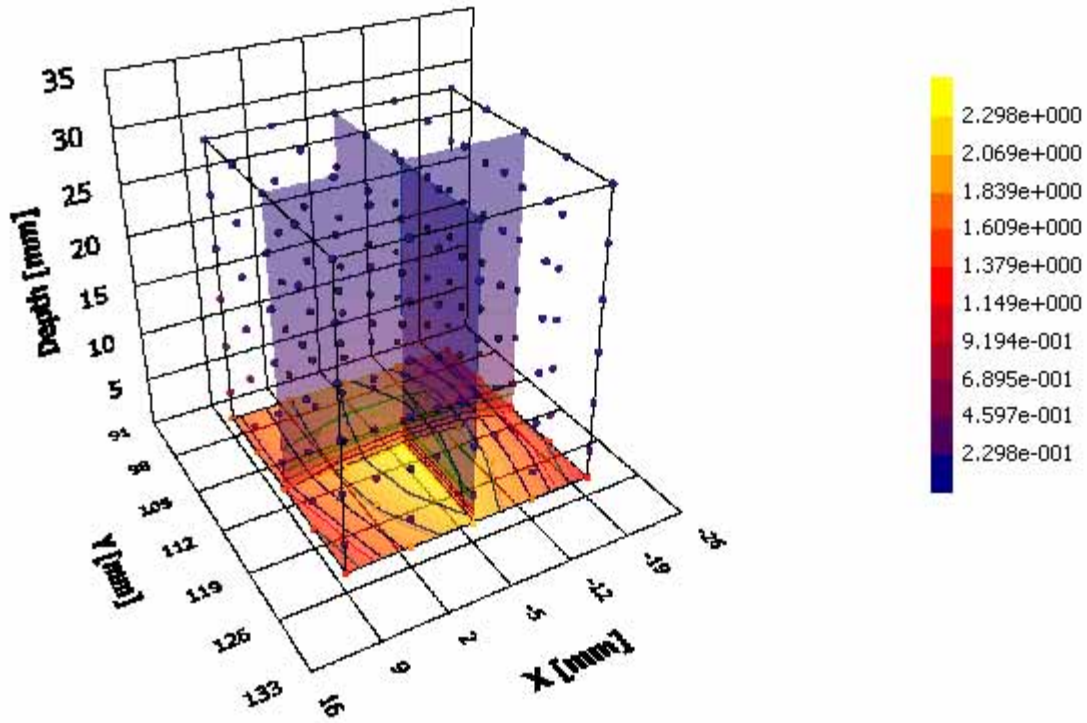
**ULTRATECH GROUP OF LABS**

3000 Bristol Circle, Oakville, Ontario, Canada L6H 6G4  
Tel. #: 905-829-1570, Fax. #: 905-829-8050, Email: vic@ultratech-labs.com, Website: http://www.ultratech-labs.com

File #: ICOM-189-SAR  
October 30, 2008

- Assessed by ITI (UK) Competent Body, NVLAP (USA) Accreditation Body & ACA/AUSTEL (Australia), VCCI (Japan)
- Accredited by Industry Canada (Canada) under ACC-LAB (Europe/Canada MRA and APEC/Canada MRA)
- Recognized/Listed by FCC (USA)
- All test results contained in this engineering test report are traceable to National Institute of Standards and Technology (NIST)





Remark: Local SAR value in the above plot did not reflect 50% of user-based time-average correction for PTT.

**ULTRATECH GROUP OF LABS**

3000 Bristol Circle, Oakville, Ontario, Canada L6H 6G4  
Tel. #: 905-829-1570, Fax. #: 905-829-8050, Email: vic@ultratech-labs.com, Website: http://www.ultratech-labs.com

**File #: ICOM-189-SAR**  
**October 30, 2008**

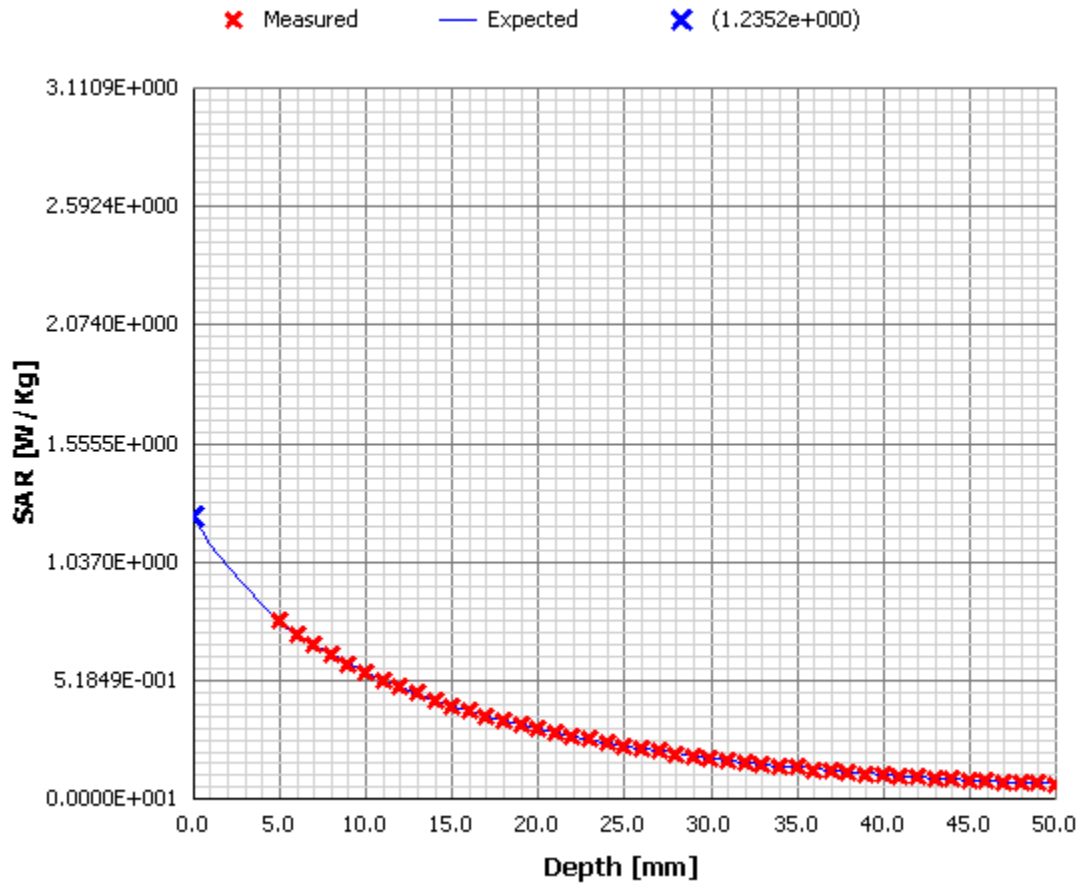
- Assessed by ITI (UK) Competent Body, NVLAP (USA) Accreditation Body & ACA/AUSTEL (Australia), VCCI (Japan)
- Accredited by Industry Canada (Canada) under ACC-LAB (Europe/Canada MRA and APEC/Canada MRA)
- Recognized/Listed by FCC (USA)
- All test results contained in this engineering test report are traceable to National Institute of Standards and Technology (NIST)

**SPECIFIC ABSORPTION RATE (SAR)**

IEEE C95.1-1992, FCC OET Bulletin 65 (Supplement C), Industry Canada RSS-102(Issue 2) and ACA Radio communications (Electromagnetic Radiation – Human Exposure) Amendment Standard 2000 (No. 1)

VHF MARINE TRANSCEIVER M/N: IC-M36

FCC ID: AFJ316800



**ULTRATECH GROUP OF LABS**

3000 Bristol Circle, Oakville, Ontario, Canada L6H 6G4  
Tel. #: 905-829-1570, Fax. #: 905-829-8050, Email: vic@ultratech-labs.com, Website: http://www.ultratech-labs.com

File #: ICOM-189-SAR  
October 30, 2008

- Assessed by ITI (UK) Competent Body, NVLAP (USA) Accreditation Body & ACA/AUSTEL (Australia), VCCI (Japan)
- Accredited by Industry Canada (Canada) under ACC-LAB (Europe/Canada MRA and APEC/Canada MRA)
- Recognized/Listed by FCC (USA)
- All test results contained in this engineering test report are traceable to National Institute of Standards and Technology (NIST)

**6.2. BODY CONFIGURATION**

**6.2.1. Body-worn; Back-side in parallel to the phantom and the belt clip in contact**

#	Configuration	Antenna Position	Frequency [MHz]	Channel	SAR <sub>local</sub> Before [W/Kg]	SAR <sub>local</sub> After [W/Kg]	MAX SAR <sub>1g</sub> [W/Kg]
*	General Population/Uncontrolled Exposure Category Limit						1.6
03	Li-ion rechargeable battery pack (M/N: BP-252)	FIX	156.025	Low	0.15	0.13	0.45
04	Belt clip (M/N: MB-109) Speaker-microphone (M/N: HM-165)	FIX	157.425	High			-

**ULTRATECH GROUP OF LABS**

3000 Bristol Circle, Oakville, Ontario, Canada L6H 6G4  
 Tel. #: 905-829-1570, Fax. #: 905-829-8050, Email: vic@ultratech-labs.com, Website: http://www.ultratech-labs.com

**File #: ICOM-189-SAR**  
**October 30, 2008**

- Assessed by ITI (UK) Competent Body, NVLAP (USA) Accreditation Body & ACA/AUSTEL (Australia), VCCI (Japan)
- Accredited by Industry Canada (Canada) under ACC-LAB (Europe/Canada MRA and APEC/Canada MRA)
- Recognized/Listed by FCC (USA)
- All test results contained in this engineering test report are traceable to National Institute of Standards and Technology (NIST)

**SPECIFIC ABSORPTION RATE (SAR)**

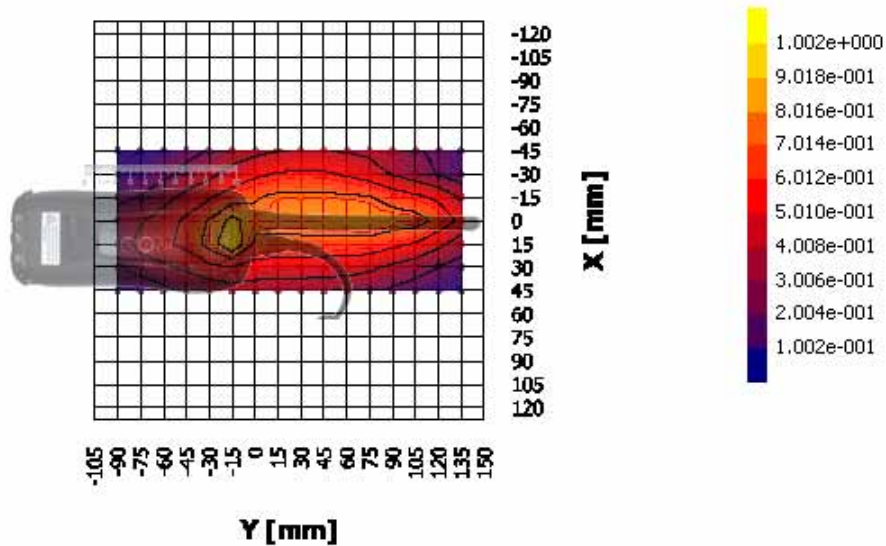
IEEE C95.1-1992, FCC OET Bulletin 65 (Supplement C), Industry Canada RSS-102(Issue 2) and ACA Radio communications (Electromagnetic Radiation – Human Exposure) Amendment Standard 2000 (No. 1)

VHF MARINE TRANSCEIVER M/N: IC-M36

FCC ID: AFJ316800

**6.2.1.1. Li-Ion battery pack (M/N: BP-252), Belt Clip (M/N: MB-109), Speaker-microphone (M/N: HS-165); 156.025MHz; #03**

Test date [MM/DD/YYYY]	10/20/2008
Test by	Steven Lu
Room temperature [°C]	22
Room humidity [%]	40
Simulated tissue temperature [°C]	22
Separation distance, d [mm]	0
Test frequency [MHz]	156.025
E-field Probe	M/N: ET20, S/N: 03-MAY-0027, Sensor Offset: 2.1 mm
Sensor Factor ( $\eta_{Pd}$ ) [mV/(mW/cm <sup>2</sup> )]	10.8
Amplifier Settings (AS <sub>1</sub> , AS <sub>2</sub> , AS <sub>3</sub> )	0.0111378017, 0.0102808136, 0.0105862287
Tissue Type	Muscle
Measured conductivity [S/m]	0.80 (+0.4 %)
Measured dielectric constant	61.4 (-0.8 %)
Conversion Factor ( )	6.460
Sensitivity ( ) [W/Kg/mV]	4.323E-02
Source-(or Usage-)Based Time-Average Factor	0.5
Measurement Area Specification (X × Y)	60 mm × 45 mm; Resolution: 15 mm × 15 mm
Measurement Volume Specification (X × Y × Z)	5 pts × 5 pts × 7 pts, 58 mm × 58 mm × 30 mm; Resolution: 7 mm × 7 mm × 5 mm
SAR <sub>1g</sub> [W/Kg]	0.45



**ULTRATECH GROUP OF LABS**

3000 Bristol Circle, Oakville, Ontario, Canada L6H 6G4  
 Tel. #: 905-829-1570, Fax. #: 905-829-8050, Email: vic@ultratech-labs.com, Website: http://www.ultratech-labs.com

File #: ICOM-189-SAR  
 October 30, 2008

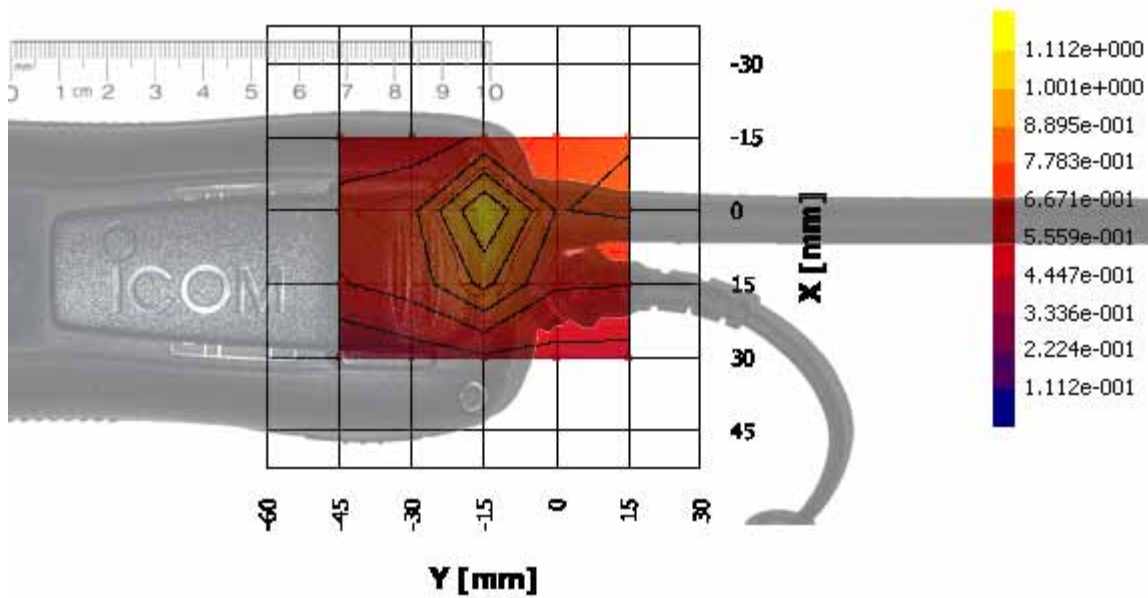
- Assessed by ITI (UK) Competent Body, NVLAP (USA) Accreditation Body & ACA/AUSTEL (Australia), VCCI (Japan)
- Accredited by Industry Canada (Canada) under ACC-LAB (Europe/Canada MRA and APEC/Canada MRA)
- Recognized/Listed by FCC (USA)
- All test results contained in this engineering test report are traceable to National Institute of Standards and Technology (NIST)

**SPECIFIC ABSORPTION RATE (SAR)**

IEEE C95.1-1992, FCC OET Bulletin 65 (Supplement C), Industry Canada RSS-102(Issue 2) and ACA Radio communications (Electromagnetic Radiation – Human Exposure) Amendment Standard 2000 (No. 1)

VHF MARINE TRANSCEIVER M/N: IC-M36

FCC ID: AFJ316800



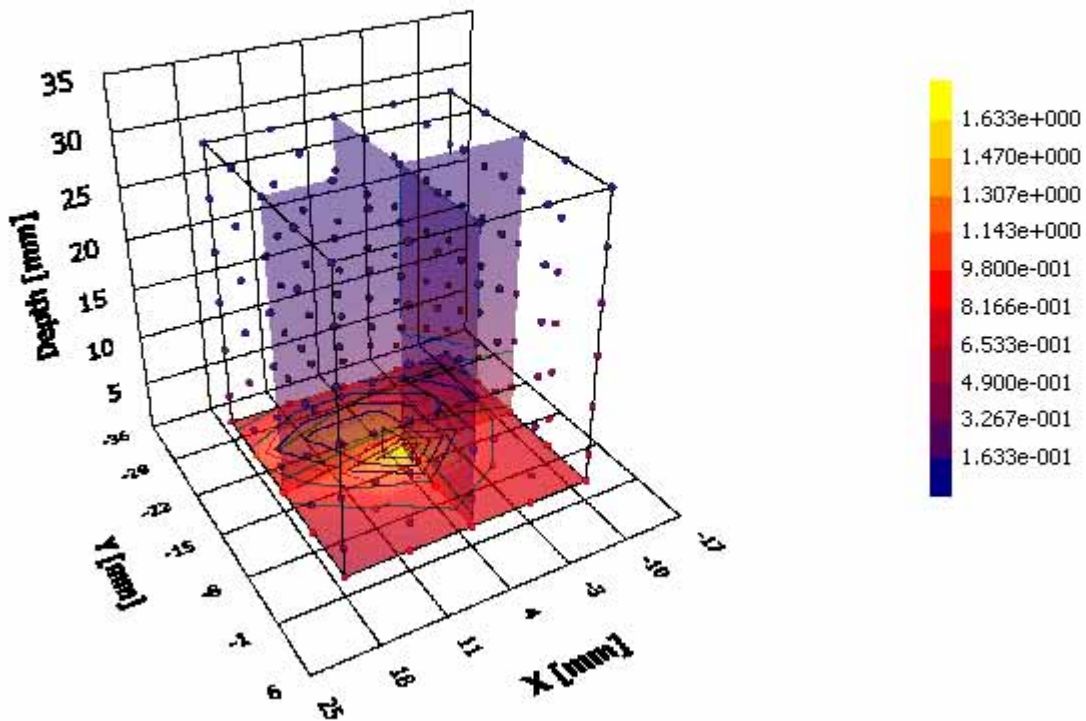
Remark: Local SAR value in the above plot did not reflect 50% of user-based time-average correction for PTT.

**ULTRATECH GROUP OF LABS**

3000 Bristol Circle, Oakville, Ontario, Canada L6H 6G4  
Tel. #: 905-829-1570, Fax. #: 905-829-8050, Email: vic@ultratech-labs.com, Website: http://www.ultratech-labs.com

File #: ICOM-189-SAR  
October 30, 2008

- Assessed by ITI (UK) Competent Body, NVLAP (USA) Accreditation Body & ACA/AUSTEL (Australia), VCCI (Japan)
- Accredited by Industry Canada (Canada) under ACC-LAB (Europe/Canada MRA and APEC/Canada MRA)
- Recognized/Listed by FCC (USA)
- All test results contained in this engineering test report are traceable to National Institute of Standards and Technology (NIST)



Remark: Local SAR value in the above plot did not reflect 50% of user-based time-average correction for PTT.

**ULTRATECH GROUP OF LABS**

3000 Bristol Circle, Oakville, Ontario, Canada L6H 6G4  
Tel. #: 905-829-1570, Fax. #: 905-829-8050, Email: vic@ultratech-labs.com, Website: http://www.ultratech-labs.com

**File #: ICOM-189-SAR**  
**October 30, 2008**

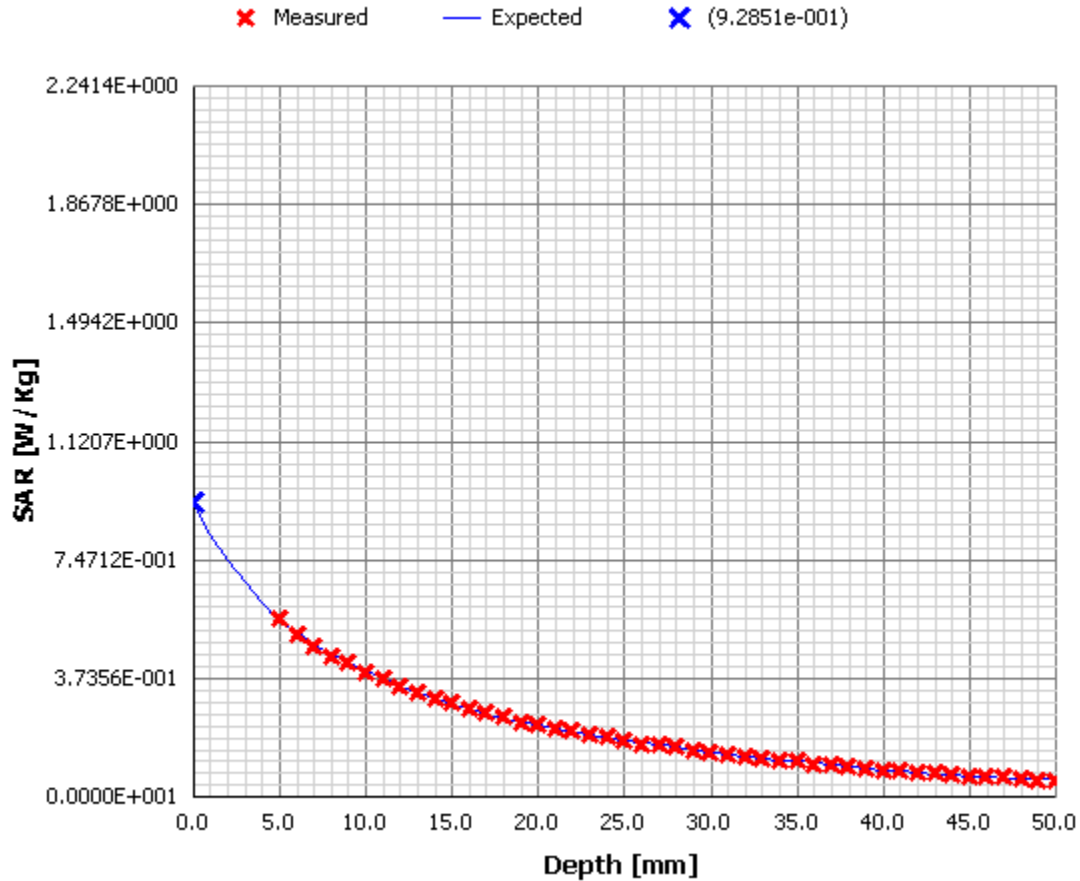
- Assessed by ITI (UK) Competent Body, NVLAP (USA) Accreditation Body & ACA/AUSTEL (Australia), VCCI (Japan)
- Accredited by Industry Canada (Canada) under ACC-LAB (Europe/Canada MRA and APEC/Canada MRA)
- Recognized/Listed by FCC (USA)
- All test results contained in this engineering test report are traceable to National Institute of Standards and Technology (NIST)

**SPECIFIC ABSORPTION RATE (SAR)**

IEEE C95.1-1992, FCC OET Bulletin 65 (Supplement C), Industry Canada RSS-102(Issue 2) and ACA Radio communications (Electromagnetic Radiation – Human Exposure) Amendment Standard 2000 (No. 1)

VHF MARINE TRANSCEIVER M/N: IC-M36

FCC ID: AFJ316800



**ULTRATECH GROUP OF LABS**

3000 Bristol Circle, Oakville, Ontario, Canada L6H 6G4  
Tel. #: 905-829-1570, Fax. #: 905-829-8050, Email: vic@ultratech-labs.com, Website: http://www.ultratech-labs.com

File #: ICOM-189-SAR  
October 30, 2008

- Assessed by ITI (UK) Competent Body, NVLAP (USA) Accreditation Body & ACA/AUSTEL (Australia), VCCI (Japan)
- Accredited by Industry Canada (Canada) under ACC-LAB (Europe/Canada MRA and APEC/Canada MRA)
- Recognized/Listed by FCC (USA)
- All test results contained in this engineering test report are traceable to National Institute of Standards and Technology (NIST)

**EXHIBIT 7. TISSUE DIELECTRIC PARAMETER CALIBRATION**

<b>Tissue calibration type</b>	HP Dielectric Strength Probe System (M/N: 85070C)		
<b>Tissue calibration date</b> [MM/DD/YYYY]	10/20/2008	10/20/2008	10/20/2008
<b>Tissue calibrated by</b>	Steven Lu	Steven Lu	Steven Lu
<b>Room temperature</b> [°C]	21	21	21
<b>Room humidity</b> [%]	40	40	40
<b>Simulated tissue temperature</b> [°C]	21	21	21
<b>Tissue calibration frequency</b> [MHz]	150	150	300
<b>Tissue Type</b>	Brain	Muscle	Brain
<b>Target conductivity</b> [S/m]	0.76	0.80	0.87
<b>Target dielectric constant</b>	52.3	61.9	45.3
<b>Composition (by weight)</b> [%]	DI Water (39.0 %) Sugar (55.5%) Salt (5.5 %) HEC (0.25 %) Bactericide (0.92 %)	DI Water (50.0 %) Sugar (47.5 %) Salt (2.3 %) HEC (0.13 %) Bactericide (0.44 %)	DI Water (39.0 %) Sugar (55.5%) Salt (5.5 %) HEC (0.25 %) Bactericide (0.92 %)
<b>Measured conductivity</b> [S/m]	0.74 (-2.1 %)	0.80 (+0.4 %)	0.85 (-2.0 %)
<b>Measured dielectric constant</b>	53.7 (+2.7 %)	61.4 (-0.8 %)	46.5 (+2.7 %)
<b>Penetration depth (plane wave excitation)</b> [mm]	63.4	61.9	47.4

**ULTRATECH GROUP OF LABS**

3000 Bristol Circle, Oakville, Ontario, Canada L6H 6G4  
 Tel. #: 905-829-1570, Fax. #: 905-829-8050, Email: vic@ultratech-labs.com, Website: http://www.ultratech-labs.com

**File #: ICOM-189-SAR**  
**October 30, 2008**

- Assessed by ITI (UK) Competent Body, NVLAP (USA) Accreditation Body & ACA/AUSTEL (Australia), VCCI (Japan)
- Accredited by Industry Canada (Canada) under ACC-LAB (Europe/Canada MRA and APEC/Canada MRA)
- Recognized/Listed by FCC (USA )
- All test results contained in this engineering test report are traceable to National Institute of Standards and Technology (NIST)



**7.1. 150 MHZ BRAIN TISSUE**

Frequency [MHz]	Meas. after 5min			DI Water at 20°C			Init. Meas.		
	'	"	[S/m]	'	"	[S/m]	'	"	[S/m]
127.500	55.0632	102.2492	0.73	79.9482	0.6626	0.00	55.0733	100.7141	0.71
150.000	53.7220	89.1370	0.74	79.8124	0.4242	0.00	53.6824	87.6673	0.73
172.500	53.2717	78.8642	0.76	79.5146	0.0537	0.00	53.2765	77.6277	0.74

**7.2. 150 MHZ MUSCLE TISSUE**

Frequency [MHz]	Meas. after 5min			DI Water at 20°C			Init. Meas.		
	'	"	[S/m]	'	"	[S/m]	'	"	[S/m]
127.500	62.1414	111.5404	0.79	79.9482	0.6626	0.00	62.2057	111.5364	0.79
150.000	61.3940	96.2877	0.80	79.8124	0.4242	0.00	61.6760	96.3773	0.80
172.500	61.4671	84.6263	0.81	79.5146	0.0537	0.00	61.6302	84.8527	0.81

**7.3. 300 MHZ BRAINTISSUE**

Frequency [MHz]	Meas. after 5min			DI Water at 20°C			Init. Meas.		
	'	"	[S/m]	'	"	[S/m]	'	"	[S/m]
275.000	47.3981	54.1392	0.83	79.1680	0.7933	0.01	47.1879	53.5610	0.82
300.000	46.5335	51.0801	0.85	79.0495	0.8576	0.01	46.3066	50.6184	0.84
325.000	45.7024	48.6160	0.88	79.1052	0.8733	0.02	45.5973	48.1602	0.87

- Assessed by ITI (UK) Competent Body, NVLAP (USA) Accreditation Body & ACA/AUSTEL (Australia), VCCI (Japan)
- Accredited by Industry Canada (Canada) under ACC-LAB (Europe/Canada MRA and APEC/Canada MRA)
- Recognized/Listed by FCC (USA)
- All test results contained in this engineering test report are traceable to National Institute of Standards and Technology (NIST)

## EXHIBIT 8. SAR SYSTEM CALIBRATION

### 8.1. GENERAL INFORMATION OF THE PROBE

Probe Type	E-Field Triangle, Isotropic
Model Number	ET20
Serial Number	03MAY-0027
Manufacturer	EMF Safety
Manufactured Date	MAY 2003
Probe Length [mm]	270
Probe offset [mm]	2.1
Probe Tip diameter [mm]	4.0
Sensor Factor ( $\eta_{Pd}$ ) [mV/(mW/cm <sup>2</sup> )]	10.8
Sensor Factor ( $\eta_{E2}$ ) [mV/(V/m) ]	10.8 / 3770

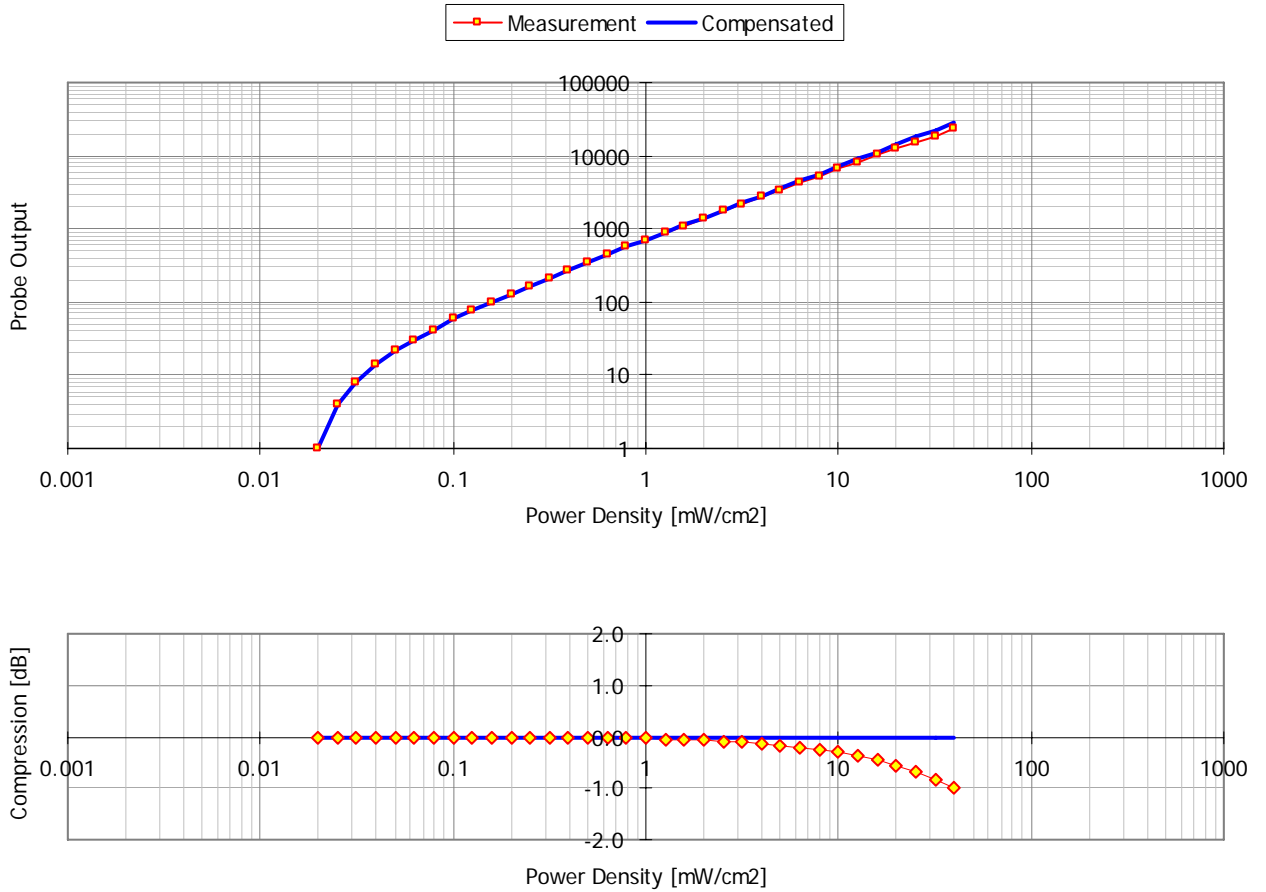
### 8.2. PROBE LINEARITY AND DYNAMIC RANGE

#### 8.2.1. Diode Compression Potential

DCP <sub>1</sub>	90444
DCP <sub>2</sub>	82508
DCP <sub>3</sub>	95649

- Assessed by ITI (UK) Competent Body, NVLAP (USA) Accreditation Body & ACA/AUSTEL (Australia), VCCI (Japan)
- Accredited by Industry Canada (Canada) under ACC-LAB (Europe/Canada MRA and APEC/Canada MRA)
- Recognized/Listed by FCC (USA )
- All test results contained in this engineering test report are traceable to National Institute of Standards and Technology (NIST)

8.2.2. Channel 1



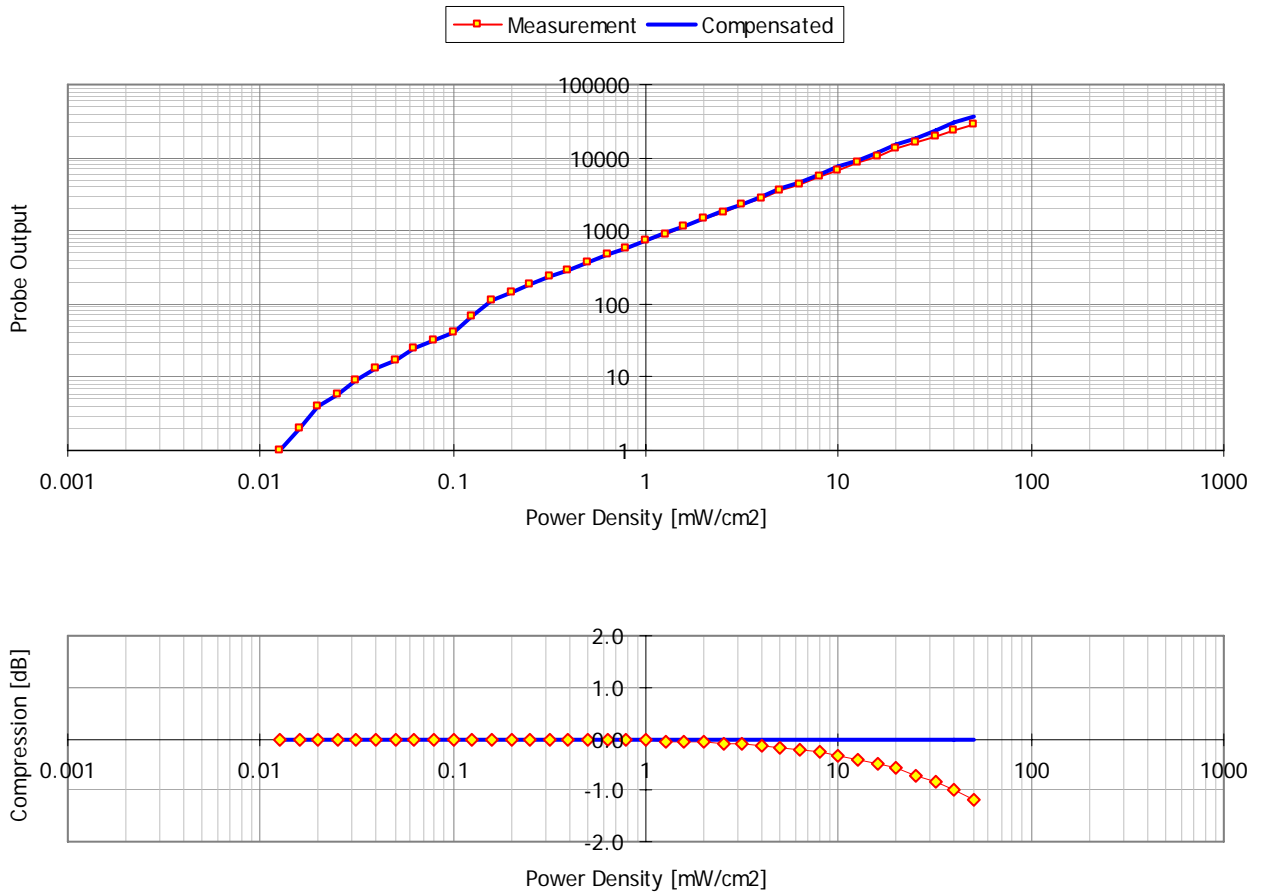
ULTRATECH GROUP OF LABS

3000 Bristol Circle, Oakville, Ontario, Canada L6H 6G4  
Tel. #: 905-829-1570, Fax. #: 905-829-8050, Email: vic@ultratech-labs.com, Website: http://www.ultratech-labs.com

File #: ICOM-189-SAR  
October 30, 2008

- Assessed by ITI (UK) Competent Body, NVLAP (USA) Accreditation Body & ACA/AUSTEL (Australia), VCCI (Japan)
- Accredited by Industry Canada (Canada) under ACC-LAB (Europe/Canada MRA and APEC/Canada MRA)
- Recognized/Listed by FCC (USA)
- All test results contained in this engineering test report are traceable to National Institute of Standards and Technology (NIST)

8.2.3. Channel 2



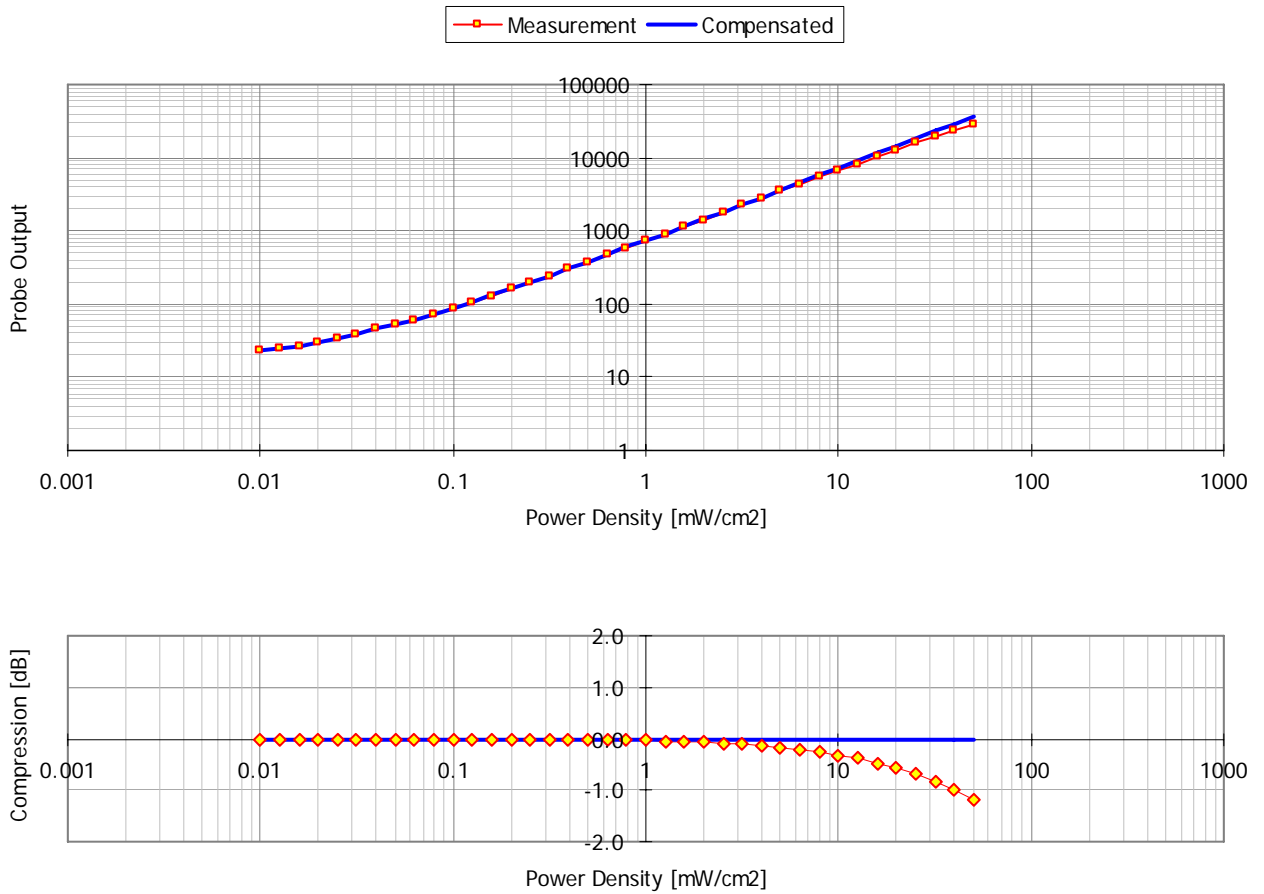
ULTRATECH GROUP OF LABS

3000 Bristol Circle, Oakville, Ontario, Canada L6H 6G4  
Tel. #: 905-829-1570, Fax. #: 905-829-8050, Email: vic@ultratech-labs.com, Website: http://www.ultratech-labs.com

File #: ICOM-189-SAR  
October 30, 2008

- Assessed by ITI (UK) Competent Body, NVLAP (USA) Accreditation Body & ACA/AUSTEL (Australia), VCCI (Japan)
- Accredited by Industry Canada (Canada) under ACC-LAB (Europe/Canada MRA and APEC/Canada MRA)
- Recognized/Listed by FCC (USA)
- All test results contained in this engineering test report are traceable to National Institute of Standards and Technology (NIST)

8.2.4. Channel 3



ULTRATECH GROUP OF LABS

3000 Bristol Circle, Oakville, Ontario, Canada L6H 6G4  
Tel. #: 905-829-1570, Fax. #: 905-829-8050, Email: vic@ultratech-labs.com, Website: http://www.ultratech-labs.com

File #: ICOM-189-SAR  
October 30, 2008

- Assessed by ITI (UK) Competent Body, NVLAP (USA) Accreditation Body & ACA/AUSTEL (Australia), VCCI (Japan)
- Accredited by Industry Canada (Canada) under ACC-LAB (Europe/Canada MRA and APEC/Canada MRA)
- Recognized/Listed by FCC (USA)
- All test results contained in this engineering test report are traceable to National Institute of Standards and Technology (NIST)

### 8.3. PROBE ISOTROPY CALIBRATION

#### 8.3.1. Calibration Setup

Calibration cell type	TEM cell
Model Number	CC-110
Serial Number	162
Manufacturer	IFI Inc.
Input Power / Power Density $_{[mW/(mW/cm^2)]}$ @ 150 MHz & 300 [MHz]	271

#### 8.3.2. Amplifier Settings

##### 8.3.2.1. Isotropy calibration at 150 MHz

Calibration Date $_{[MM/DD/YYYY]}$	06/23/2008
Calibrated by	Steven Lu
Calibration Frequency $_{[MHz]}$	150
$\Phi$ $_{[^\circ]}$	90
$\Phi_1, \Phi_2, \Phi_3$ $_{[^\circ]}$	54.7, 54.7, 54.7
$Pd$ $_{[mW/cm^2]}$	2.0
$DCP_1$	90444
$DCP_2$	82508
$DCP_3$	95649
$SUM(U_{L,1}(0^\circ), \dots, U_{L,1}(360^\circ))$	15514
$SUM(U_{L,2}(0^\circ), \dots, U_{L,2}(360^\circ))$	17773
$SUM(U_{L,3}(0^\circ), \dots, U_{L,3}(360^\circ))$	17464
$Norm_{1,peak}$	1292
$Norm_{2,peak}$	1399
$Norm_{3,peak}$	1359
$Corr_1$	0.01
$Corr_2$	0.70
$Corr_3$	0.85
$AS_1$	0.0111378017
$AS_2$	0.0102808136
$AS_3$	0.0105862287

#### ULTRATECH GROUP OF LABS

3000 Bristol Circle, Oakville, Ontario, Canada L6H 6G4  
 Tel. #: 905-829-1570, Fax. #: 905-829-8050, Email: vic@ultratech-labs.com, Website: http://www.ultratech-labs.com

**File #: ICOM-189-SAR**  
**October 30, 2008**

- Assessed by ITI (UK) Competent Body, NVLAP (USA) Accreditation Body & ACA/AUSTEL (Australia), VCCI (Japan)
- Accredited by Industry Canada (Canada) under ACC-LAB (Europe/Canada MRA and APEC/Canada MRA)
- Recognized/Listed by FCC (USA)
- All test results contained in this engineering test report are traceable to National Institute of Standards and Technology (NIST)

**8.3.2.2. Isotropy calibration at 300 MHz**

<b>Calibration Date</b> [MM/DD/YYYY]	06/23/2008
<b>Calibrated by</b>	Steven Lu
<b>Calibration Frequency</b> [MHz]	300
$\Phi$ [°]	90
$\Phi_1, \Phi_2, \Phi_3$ [°]	54.7, 54.7, 54.7
<b>Pd</b> [mW/cm <sup>2</sup> ]	2.0
<b>DCP<sub>1</sub></b>	90444
<b>DCP<sub>2</sub></b>	82508
<b>DCP<sub>3</sub></b>	95649
<b>SUM(U<sub>L,1</sub>(0°), ... , U<sub>L,1</sub>(360°))</b>	19898
<b>SUM(U<sub>L,2</sub>(0°), ... , U<sub>L,2</sub>(360°))</b>	22452
<b>SUM(U<sub>L,3</sub>(0°), ... , U<sub>L,3</sub>(360°))</b>	21907
<b>Norm<sub>1,peak</sub></b>	1653
<b>Norm<sub>2,peak</sub></b>	1754
<b>Norm<sub>3,peak</sub></b>	1705
<b>Corr<sub>1</sub></b>	0.04
<b>Corr<sub>2</sub></b>	0.80
<b>Corr<sub>3</sub></b>	0.85
<b>AS<sub>1</sub></b>	0.0087057284
<b>AS<sub>2</sub></b>	0.0082021415
<b>AS<sub>3</sub></b>	0.0084392299

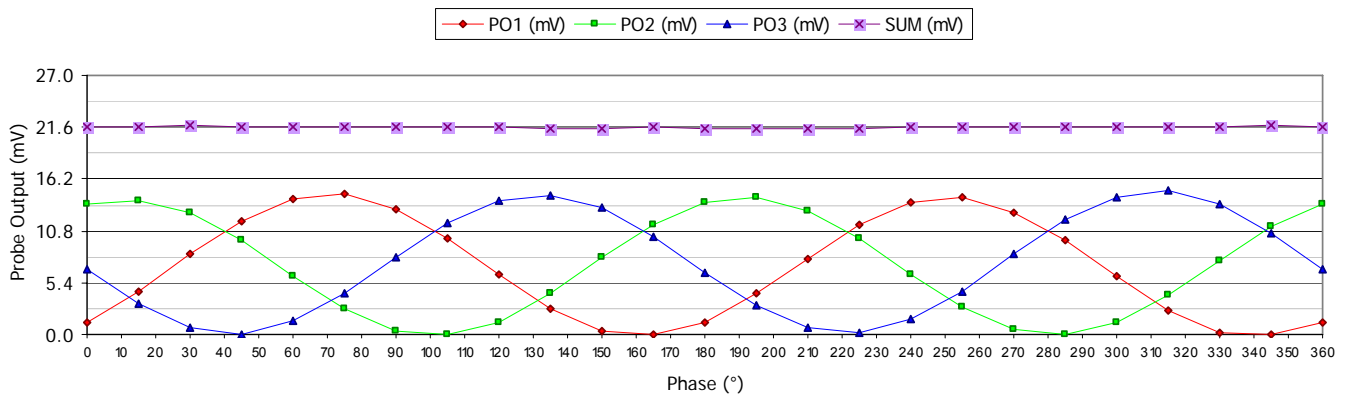
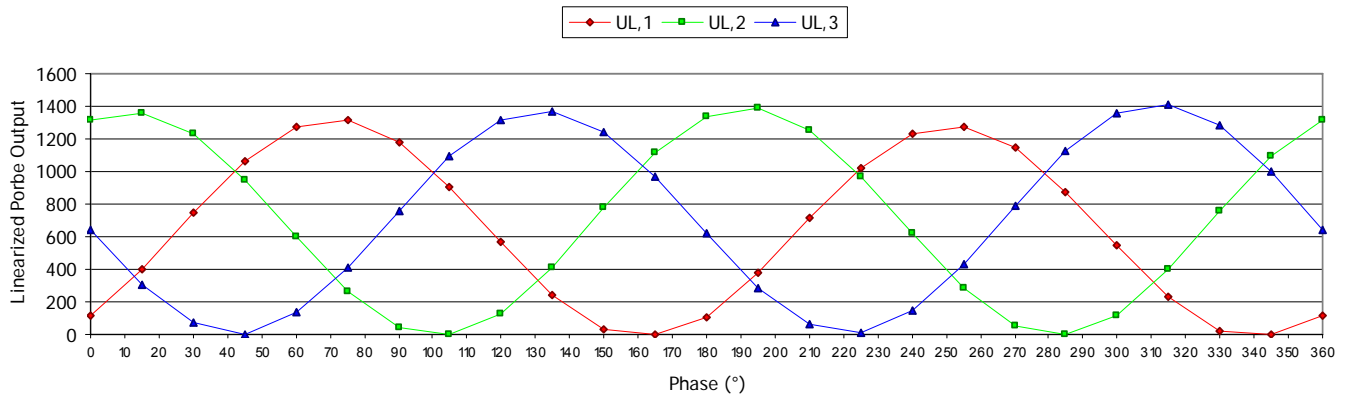
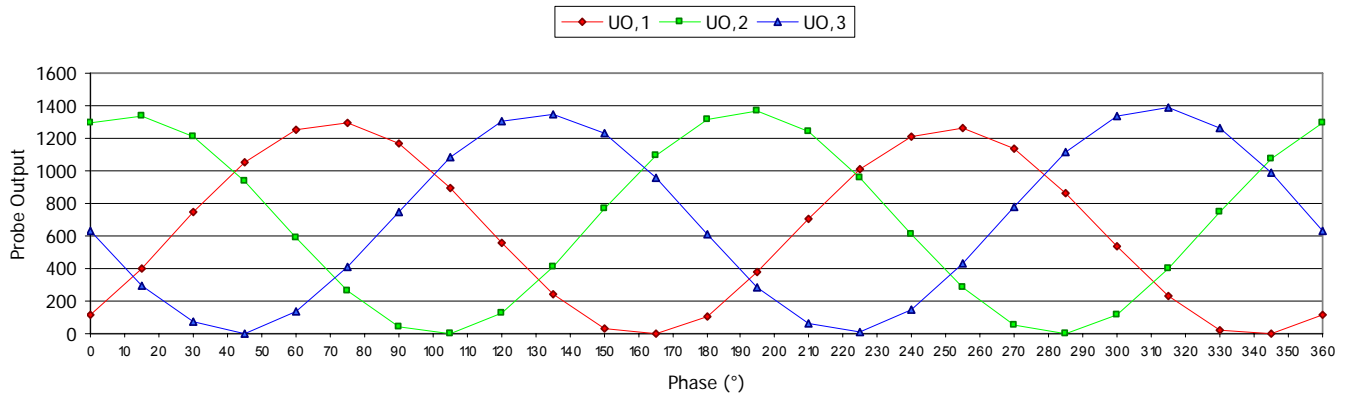
**ULTRATECH GROUP OF LABS**

3000 Bristol Circle, Oakville, Ontario, Canada L6H 6G4  
 Tel. #: 905-829-1570, Fax. #: 905-829-8050, Email: vic@ultratech-labs.com, Website: http://www.ultratech-labs.com

**File #: ICOM-189-SAR**  
**October 30, 2008**

- Assessed by ITI (UK) Competent Body, NVLAP (USA) Accreditation Body & ACA/AUSTEL (Australia), VCCI (Japan)
- Accredited by Industry Canada (Canada) under ACC-LAB (Europe/Canada MRA and APEC/Canada MRA)
- Recognized/Listed by FCC (USA)
- All test results contained in this engineering test report are traceable to National Institute of Standards and Technology (NIST)

8.3.3. Isotropic response at 150 MHz



Isotropy at 150 MHz: ±0.02 dB

ULTRATECH GROUP OF LABS

3000 Bristol Circle, Oakville, Ontario, Canada L6H 6G4  
Tel. #: 905-829-1570, Fax. #: 905-829-8050, Email: vic@ultratech-labs.com, Website: http://www.ultratech-labs.com

File #: ICOM-189-SAR  
October 30, 2008

- Assessed by ITI (UK) Competent Body, NVLAP (USA) Accreditation Body & ACA/AUSTEL (Australia), VCCI (Japan)
- Accredited by Industry Canada (Canada) under ACC-LAB (Europe/Canada MRA and APEC/Canada MRA)
- Recognized/Listed by FCC (USA)
- All test results contained in this engineering test report are traceable to National Institute of Standards and Technology (NIST)



**SPECIFIC ABSORPTION RATE (SAR)**

IEEE C95.1-1992, FCC OET Bulletin 65 (Supplement C), Industry Canada RSS-102(Issue 2) and ACA Radio communications (Electromagnetic Radiation – Human Exposure) Amendment Standard 2000 (No. 1)

**VHF MARINE TRANSCEIVER M/N: IC-M36****FCC ID: AFJ316800**

Phase (°)	U <sub>0,1</sub>	U <sub>0,2</sub>	U <sub>0,3</sub>	U <sub>L,1</sub>	U <sub>L,2</sub>	U <sub>L,3</sub>	PO <sub>1</sub> (mV)	PO <sub>2</sub> (mV)	PO <sub>3</sub> (mV)	SUM (mV)	Deviation (dB)
0	120	1294	634	120	1314	638	1.34	13.51	6.76	21.61	0.00
15	398	1339	300	400	1361	301	4.45	13.99	3.19	21.63	0.00
30	744	1211	70	750	1229	70	8.35	12.63	0.74	21.73	0.02
45	1054	939	5	1066	950	5	11.88	9.76	0.05	21.69	0.02
60	1253	594	132	1270	598	132	14.15	6.15	1.40	21.70	0.02
75	1296	267	407	1315	268	409	14.64	2.75	4.33	21.72	0.02
90	1164	41	751	1179	41	757	13.13	0.42	8.01	21.57	-0.01
105	896	0	1079	905	0	1091	10.08	0.00	11.55	21.63	0.00
120	561	129	1301	564	129	1319	6.29	1.33	13.96	21.58	-0.01
135	241	411	1352	242	413	1371	2.69	4.25	14.51	21.45	-0.03
150	31	769	1229	31	776	1245	0.35	7.98	13.18	21.50	-0.02
165	0	1099	961	0	1114	971	0.00	11.45	10.28	21.72	0.02
180	110	1315	612	110	1336	616	1.23	13.73	6.52	21.48	-0.03
195	378	1366	282	380	1389	283	4.23	14.28	2.99	21.50	-0.02
210	707	1239	63	713	1258	63	7.94	12.93	0.67	21.53	-0.02
225	1012	962	9	1023	973	9	11.40	10.01	0.10	21.50	-0.02
240	1212	612	146	1228	617	146	13.68	6.34	1.55	21.57	-0.01
255	1259	279	427	1277	280	429	14.22	2.88	4.54	21.64	0.00
270	1132	50	783	1146	50	789	12.77	0.51	8.36	21.64	0.00
285	867	0	1118	875	0	1131	9.75	0.00	11.97	21.72	0.02
300	541	117	1340	544	117	1359	6.06	1.20	14.38	21.65	0.01
315	231	399	1391	232	401	1411	2.58	4.12	14.94	21.64	0.01
330	24	746	1264	24	753	1281	0.27	7.74	13.56	21.56	-0.01
345	0	1077	989	0	1091	999	0.00	11.22	10.58	21.80	0.04
360	120	1296	635	120	1316	639	1.34	13.53	6.77	21.64	0.00

**ULTRATECH GROUP OF LABS**

3000 Bristol Circle, Oakville, Ontario, Canada L6H 6G4

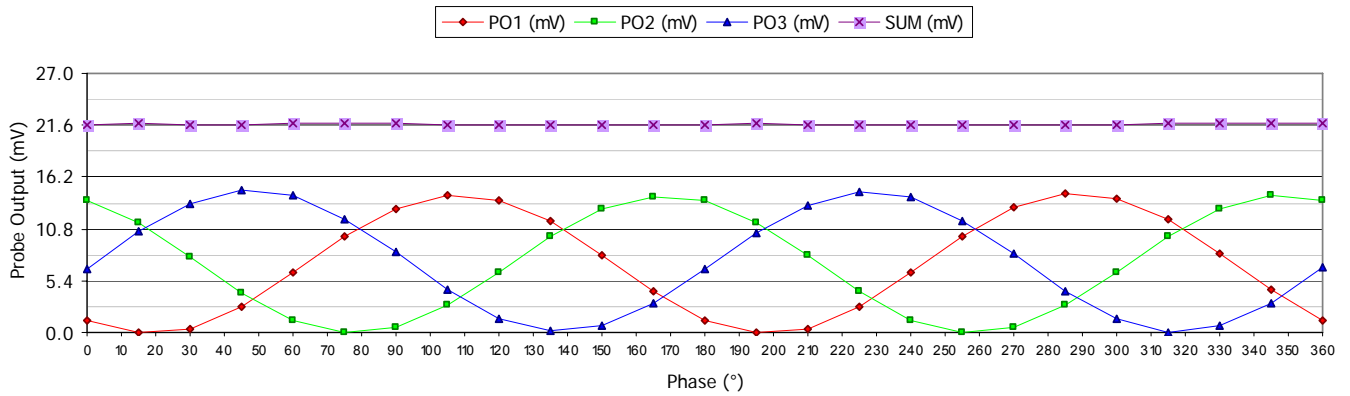
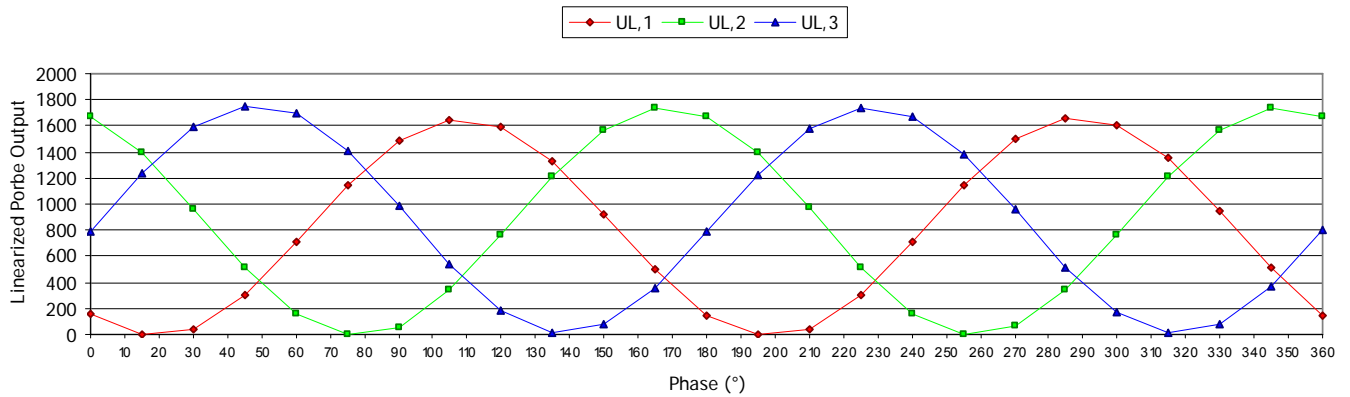
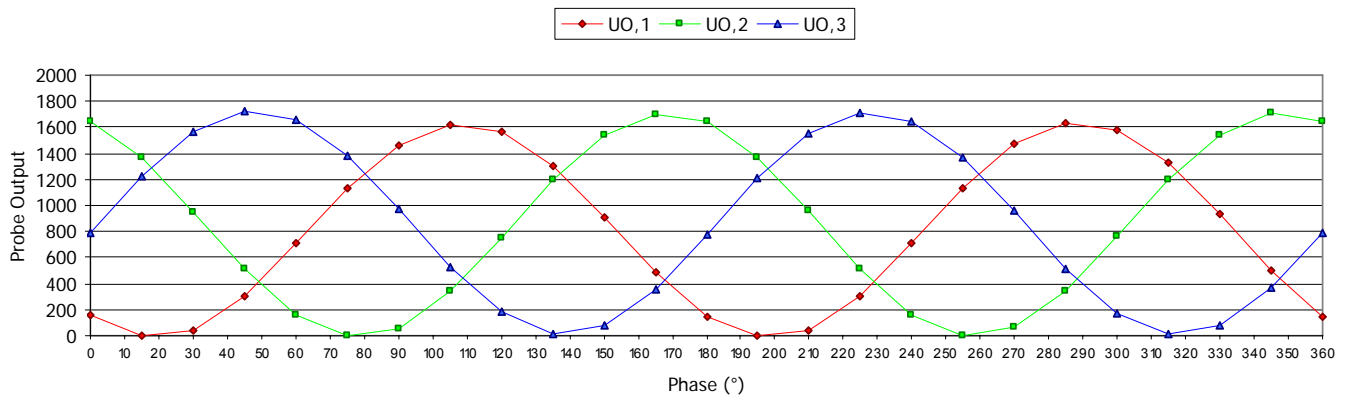
Tel. #: 905-829-1570, Fax. #: 905-829-8050, Email: vic@ultratech-labs.com, Website: http://www.ultratech-labs.com

File #: ICOM-189-SAR

October 30, 2008

- Assessed by ITI (UK) Competent Body, NVLAP (USA) Accreditation Body & ACA/AUSTEL (Australia), VCCI (Japan)
- Accredited by Industry Canada (Canada) under ACC-LAB (Europe/Canada MRA and APEC/Canada MRA)
- Recognized/Listed by FCC (USA)
- All test results contained in this engineering test report are traceable to National Institute of Standards and Technology (NIST)

**8.3.4. Isotropic response at 300 MHz**



Isotropy at 300 MHz:  $\pm 0.02$  dB

**ULTRATECH GROUP OF LABS**

3000 Bristol Circle, Oakville, Ontario, Canada L6H 6G4  
 Tel. #: 905-829-1570, Fax. #: 905-829-8050, Email: vic@ultratech-labs.com, Website: http://www.ultratech-labs.com

File #: ICOM-189-SAR  
 October 30, 2008

- Assessed by ITI (UK) Competent Body, NVLAP (USA) Accreditation Body & ACA/AUSTEL (Australia), VCCI (Japan)
- Accredited by Industry Canada (Canada) under ACC-LAB (Europe/Canada MRA and APEC/Canada MRA)
- Recognized/Listed by FCC (USA)
- All test results contained in this engineering test report are traceable to National Institute of Standards and Technology (NIST)

**SPECIFIC ABSORPTION RATE (SAR)**

IEEE C95.1-1992, FCC OET Bulletin 65 (Supplement C), Industry Canada RSS-102(Issue 2) and ACA Radio communications (Electromagnetic Radiation – Human Exposure) Amendment Standard 2000 (No. 1)

**VHF MARINE TRANSCEIVER M/N: IC-M36****FCC ID: AFJ316800**

Phase (°)	U <sub>O,1</sub>	U <sub>O,2</sub>	U <sub>O,3</sub>	U <sub>L,1</sub>	U <sub>L,2</sub>	U <sub>L,3</sub>	PO <sub>1</sub> (mV)	PO <sub>2</sub> (mV)	PO <sub>3</sub> (mV)	SUM (mV)	Deviation (dB)
0	152	1640	783	152	1673	789	1.33	13.72	6.66	21.71	0.00
15	0	1370	1225	0	1393	1241	0.00	11.42	10.47	21.89	0.04
30	39	951	1566	39	962	1592	0.34	7.89	13.43	21.66	-0.01
45	306	509	1725	307	512	1756	2.67	4.20	14.82	21.69	0.00
60	705	158	1662	710	158	1691	6.19	1.30	14.27	21.75	0.01
75	1129	0	1385	1143	0	1405	9.95	0.00	11.86	21.81	0.02
90	1464	59	978	1488	59	988	12.95	0.48	8.34	21.77	0.02
105	1618	339	532	1647	340	535	14.34	2.79	4.51	21.64	-0.01
120	1560	755	178	1587	762	178	13.82	6.25	1.50	21.57	-0.02
135	1308	1193	11	1327	1210	11	11.55	9.93	0.09	21.57	-0.02
150	914	1538	80	923	1567	80	8.04	12.85	0.68	21.56	-0.03
165	491	1698	360	494	1733	361	4.30	14.21	3.05	21.56	-0.03
180	150	1641	777	150	1674	783	1.31	13.73	6.61	21.65	-0.01
195	0	1371	1213	0	1394	1228	0.00	11.43	10.37	21.80	0.02
210	42	959	1550	42	970	1575	0.37	7.96	13.29	21.62	-0.01
225	307	514	1707	308	517	1737	2.68	4.24	14.66	21.59	-0.02
240	707	160	1639	713	160	1667	6.20	1.31	14.07	21.59	-0.02
255	1131	0	1363	1145	0	1382	9.97	0.00	11.67	21.64	-0.01
270	1471	61	957	1495	61	967	10.45	0.50	8.16	21.67	0.00
285	1634	343	516	1664	344	519	14.48	2.83	4.38	21.69	0.00
300	1582	760	168	1610	767	168	14.01	6.29	1.42	21.72	0.01
315	1330	1196	9	1350	1213	9	11.75	9.95	0.08	21.78	0.02
330	937	1540	81	947	1569	81	8.24	12.87	0.68	21.79	0.02
345	504	1706	362	507	1741	363	4.41	14.28	3.07	21.76	0.01
360	151	1640	792	151	1673	799	1.32	13.72	6.74	21.77	0.02

**ULTRATECH GROUP OF LABS**

3000 Bristol Circle, Oakville, Ontario, Canada L6H 6G4

Tel. #: 905-829-1570, Fax. #: 905-829-8050, Email: vic@ultratech-labs.com, Website: http://www.ultratech-labs.com

File #: ICOM-189-SAR

October 30, 2008

- Assessed by ITI (UK) Competent Body, NVLAP (USA) Accreditation Body & ACA/AUSTEL (Australia), VCCI (Japan)
- Accredited by Industry Canada (Canada) under ACC-LAB (Europe/Canada MRA and APEC/Canada MRA)
- Recognized/Listed by FCC (USA)
- All test results contained in this engineering test report are traceable to National Institute of Standards and Technology (NIST)

## 8.4. PROBE THERMAL TRANSFER CALIBRATION

### 8.4.1. Calibration Setup

#### 8.4.1.1. Setup for 150 MHz

Calibration type	Thermal transfer calibration
Flat phantom dimension (W × L × H) [mm]	420 × 700 × 200
Flat phantom shell thickness (d <sub>3</sub> ) [mm]	2.0
Flat phantom shell permittivity	2.98
Calibration dipole dimension (L × h × d) [mm]	370 (helical; 102 turns, 20.0 [mm] per turn) × 454 × 1.35
Sensor-to-Phantom (d <sub>1</sub> ) [mm]	5.0
Dipole-to-Phantom (d <sub>2</sub> ) [mm]	13.0
Sensor-to-Dipole (d <sub>1</sub> + d <sub>2</sub> + d <sub>3</sub> ) [mm]	20.0 (5.0 + 13.0 + 2.0)
Return Loss (at test frequency) [dB]	-20.0

#### 8.4.1.2. Setup for 300 MHz

Calibration type	Thermal transfer calibration
Flat phantom dimension (W × L × H) [mm]	420 × 700 × 200
Flat phantom shell thickness (d <sub>3</sub> ) [mm]	2.0
Flat phantom shell permittivity	2.98
Calibration dipole dimension (L × h × d) [mm]	418 × 256 × 6.4
Sensor-to-Phantom (d <sub>1</sub> ) [mm]	5.0
Dipole-to-Phantom (d <sub>2</sub> ) [mm]	13.0
Sensor-to-Dipole (d <sub>1</sub> + d <sub>2</sub> + d <sub>3</sub> ) [mm]	20.0 (5.0 + 13.0 + 2.0)
Return Loss (at test frequency) [dB]	-24.0

## ULTRATECH GROUP OF LABS

3000 Bristol Circle, Oakville, Ontario, Canada L6H 6G4  
 Tel. #: 905-829-1570, Fax. #: 905-829-8050, Email: vic@ultratech-labs.com, Website: http://www.ultratech-labs.com

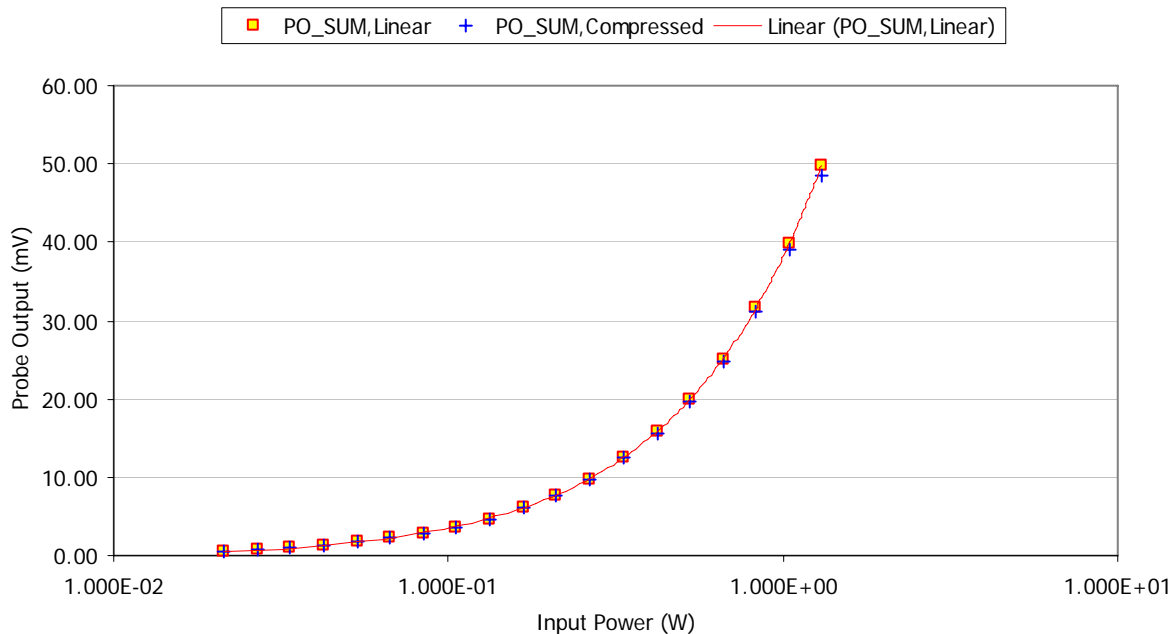
**File #: ICOM-189-SAR**  
**October 30, 2008**

- Assessed by ITI (UK) Competent Body, NVLAP (USA) Accreditation Body & ACA/AUSTEL (Australia), VCCI (Japan)
- Accredited by Industry Canada (Canada) under ACC-LAB (Europe/Canada MRA and APEC/Canada MRA)
- Recognized/Listed by FCC (USA)
- All test results contained in this engineering test report are traceable to National Institute of Standards and Technology (NIST)

**8.4.2. Conversion Factor**

**8.4.2.1. Thermal transfer calibration at 150 MHz for simulated brain tissue**

<b>Calibration Date</b> [MM/DD/YYYY]	07/03/2008
<b>Calibration by</b>	Steven Lu
<b>Calibration Frequency</b> [MHz]	150
<b>Room Temperature</b> [°C]	21
<b>Room Humidity</b> [%]	40
<b>Simulated Tissue Temperature</b> [°C]	21
<b>Tissue Type</b>	Brain
<b>Specific Heat Capacity</b> [J/Kg/°C]	2,828
<b>Mass Density</b> [Kg/m <sup>3</sup> ]	1,308
<b>Measured conductivity</b> [S/m]	0.75
<b>Measured dielectric constant</b>	54.7
<b>Penetration depth (plane wave excitation)</b> [mm]	63.3
<b>(PO<sub>tot tissue</sub>)/P</b> [mV/W]	3.846533E+01
<b>(ΔT/Δt)/P</b> [°C/sec/W]	4.156449E-04
<b>Conversion Factor ( ζ )</b>	6.550



**ULTRATECH GROUP OF LABS**

3000 Bristol Circle, Oakville, Ontario, Canada L6H 6G4  
 Tel. #: 905-829-1570, Fax. #: 905-829-8050, Email: vic@ultratech-labs.com, Website: http://www.ultratech-labs.com

**File #: ICOM-189-SAR**  
**October 30, 2008**

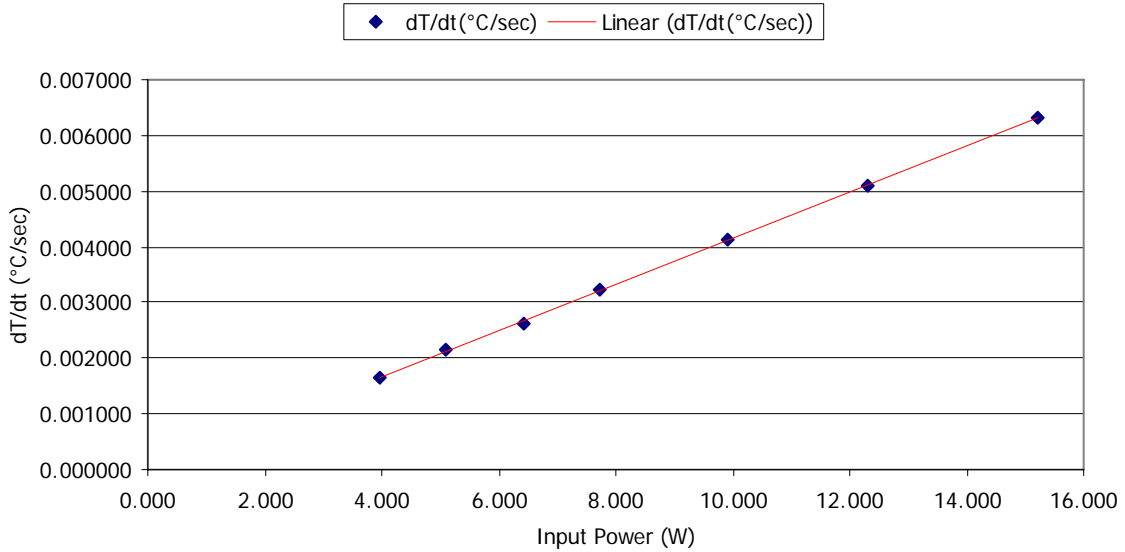
- Assessed by ITI (UK) Competent Body, NVLAP (USA) Accreditation Body & ACA/AUSTEL (Australia), VCCI (Japan)
- Accredited by Industry Canada (Canada) under ACC-LAB (Europe/Canada MRA and APEC/Canada MRA)
- Recognized/Listed by FCC (USA)
- All test results contained in this engineering test report are traceable to National Institute of Standards and Technology (NIST)

**SPECIFIC ABSORPTION RATE (SAR)**

IEEE C95.1-1992, FCC OET Bulletin 65 (Supplement C), Industry Canada RSS-102(Issue 2) and ACA Radio communications (Electromagnetic Radiation – Human Exposure) Amendment Standard 2000 (No. 1)

**VHF MARINE TRANSCEIVER M/N: IC-M36**

**FCC ID: AFJ316800**



**ULTRATECH GROUP OF LABS**

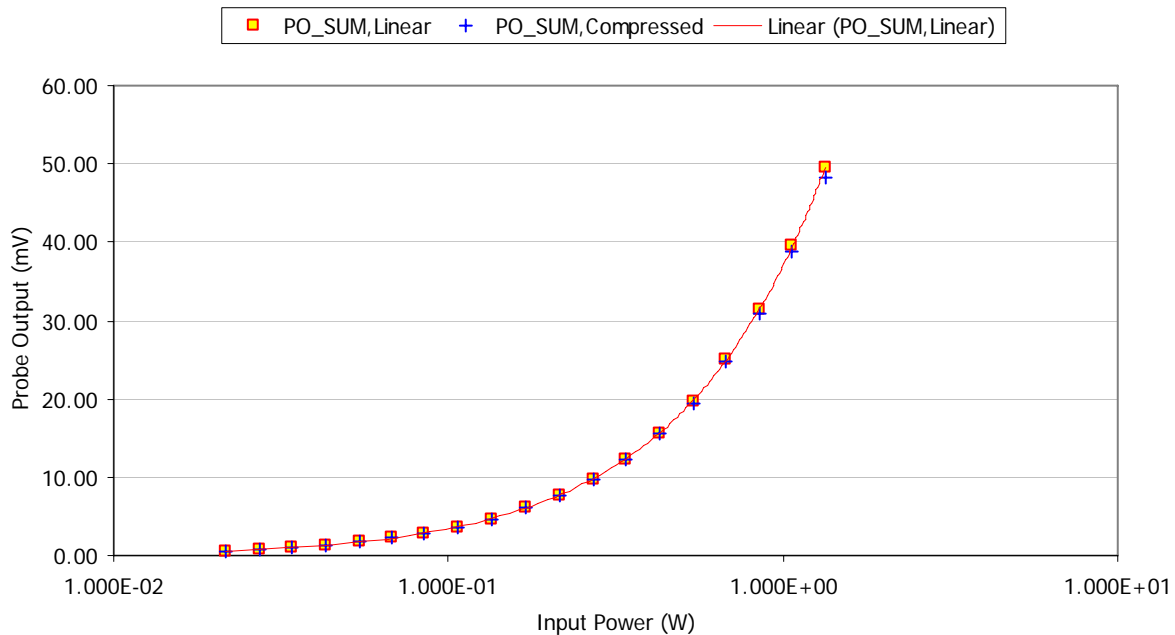
3000 Bristol Circle, Oakville, Ontario, Canada L6H 6G4  
Tel. #: 905-829-1570, Fax. #: 905-829-8050, Email: vic@ultratech-labs.com, Website: http://www.ultratech-labs.com

**File #: ICOM-189-SAR**  
**October 30, 2008**

- Assessed by ITI (UK) Competent Body, NVLAP (USA) Accreditation Body & ACA/AUSTEL (Australia), VCCI (Japan)
- Accredited by Industry Canada (Canada) under ACC-LAB (Europe/Canada MRA and APEC/Canada MRA)
- Recognized/Listed by FCC (USA )
- All test results contained in this engineering test report are traceable to National Institute of Standards and Technology (NIST)

**8.4.2.2. Thermal transfer calibration at 150 MHz for simulated muscle tissue**

<b>Calibration Date</b> [MM/DD/YYYY]	06/25/2008
<b>Calibration by</b>	Steven Lu
<b>Calibration Frequency</b> [MHz]	150
<b>Room Temperature</b> [°C]	21
<b>Room Humidity</b> [%]	40
<b>Simulated Tissue Temperature</b> [°C]	21
<b>Tissue Type</b>	Muscle
<b>Specific Heat Capacity</b> [J/Kg/°C]	2,861
<b>Mass Density</b> [Kg/m <sup>3</sup> ]	1,241
<b>Measured conductivity</b> [S/m]	0.80
<b>Measured dielectric constant</b>	61.4
<b>Penetration depth (plane wave excitation)</b> [mm]	62.1
<b>(PO<sub>tot tissue</sub>)/P</b> [mV/W]	3.730112E+01
<b>(ΔT/Δt)/P</b> [°C/sec/W]	4.541787E-04
<b>Conversion Factor ( ζ )</b>	6.460

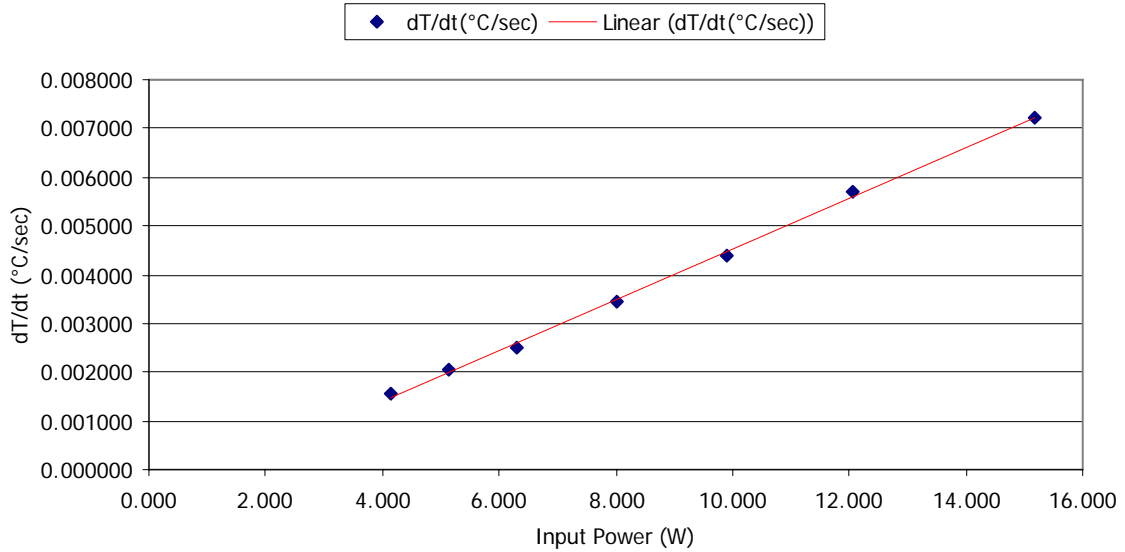


**ULTRATECH GROUP OF LABS**

3000 Bristol Circle, Oakville, Ontario, Canada L6H 6G4  
 Tel. #: 905-829-1570, Fax. #: 905-829-8050, Email: vic@ultratech-labs.com, Website: http://www.ultratech-labs.com

**File #: ICOM-189-SAR**  
**October 30, 2008**

- Assessed by ITI (UK) Competent Body, NVLAP (USA) Accreditation Body & ACA/AUSTEL (Australia), VCCI (Japan)
- Accredited by Industry Canada (Canada) under ACC-LAB (Europe/Canada MRA and APEC/Canada MRA)
- Recognized/Listed by FCC (USA)
- All test results contained in this engineering test report are traceable to National Institute of Standards and Technology (NIST)



**ULTRATECH GROUP OF LABS**

3000 Bristol Circle, Oakville, Ontario, Canada L6H 6G4  
Tel. #: 905-829-1570, Fax. #: 905-829-8050, Email: vic@ultratech-labs.com, Website: http://www.ultratech-labs.com

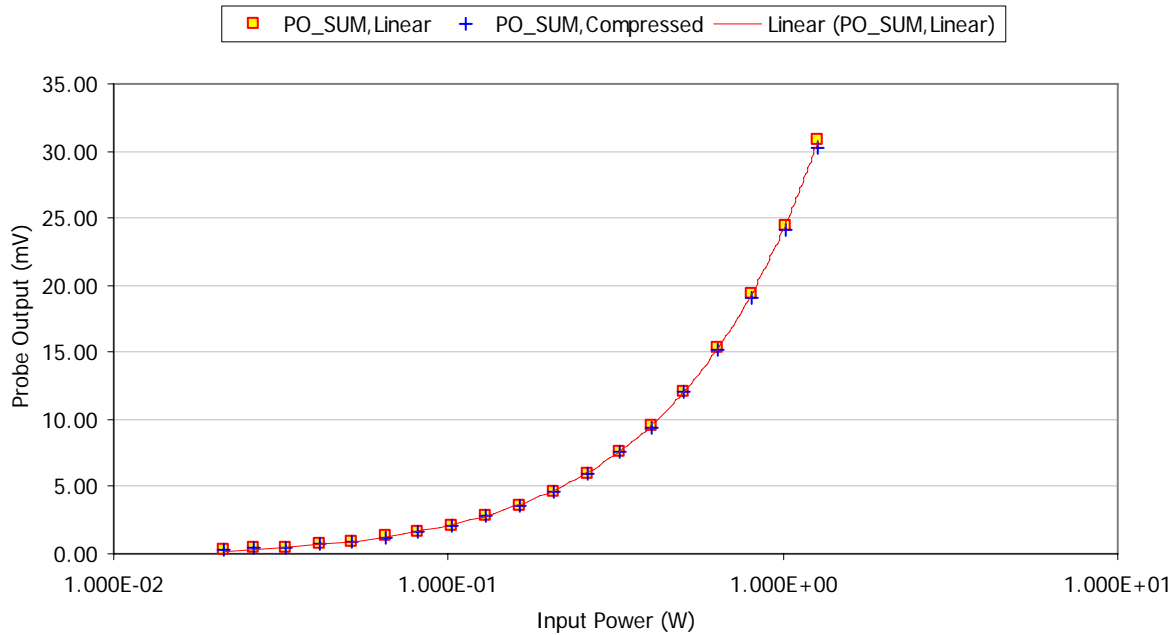
**File #: ICOM-189-SAR**  
**October 30, 2008**

- Assessed by ITI (UK) Competent Body, NVLAP (USA) Accreditation Body & ACA/AUSTEL (Australia), VCCI (Japan)
- Accredited by Industry Canada (Canada) under ACC-LAB (Europe/Canada MRA and APEC/Canada MRA)
- Recognized/Listed by FCC (USA)
- All test results contained in this engineering test report are traceable to National Institute of Standards and Technology (NIST)



**8.4.2.3. Thermal transfer calibration at 300 MHz for simulated Brian tissue**

<b>Calibration Date</b> [MM/DD/YYYY]	07/07/2008
<b>Calibration by</b>	Steven Lu
<b>Calibration Frequency</b> [MHz]	300
<b>Room Temperature</b> [°C]	21
<b>Room Humidity</b> [%]	40
<b>Simulated Tissue Temperature</b> [°C]	21
<b>Tissue Type</b>	Brain
<b>Specific Heat Capacity</b> [J/Kg/°C]	2,828
<b>Mass Density</b> [Kg/m <sup>3</sup> ]	1,308
<b>Measured conductivity</b> [S/m]	0.89
<b>Measured dielectric constant</b>	47.9
<b>Penetration depth (plane wave excitation)</b> [mm]	46.1
<b>(PO<sub>tot tissue</sub>)/P</b> [mV/W]	2.444085E+01
<b>(ΔT/Δt)/P</b> [°C/sec/W]	3.076717E-04
<b>Conversion Factor ( ζ )</b>	6.672



**ULTRATECH GROUP OF LABS**

3000 Bristol Circle, Oakville, Ontario, Canada L6H 6G4  
 Tel. #: 905-829-1570, Fax. #: 905-829-8050, Email: vic@ultratech-labs.com, Website: http://www.ultratech-labs.com

**File #: ICOM-189-SAR**  
**October 30, 2008**

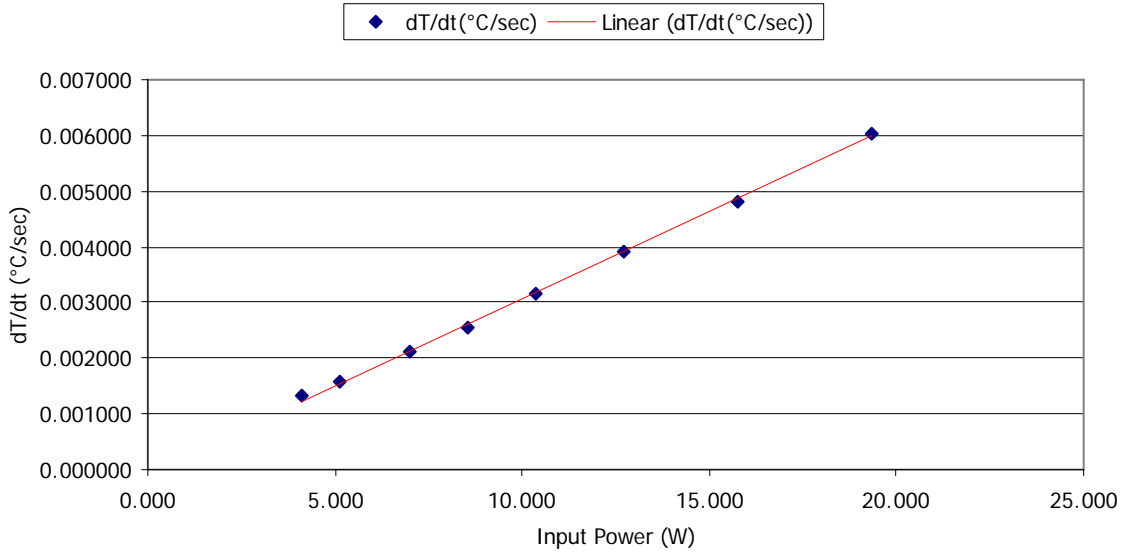
- Assessed by ITI (UK) Competent Body, NVLAP (USA) Accreditation Body & ACA/AUSTEL (Australia), VCCI (Japan)
- Accredited by Industry Canada (Canada) under ACC-LAB (Europe/Canada MRA and APEC/Canada MRA)
- Recognized/Listed by FCC (USA)
- All test results contained in this engineering test report are traceable to National Institute of Standards and Technology (NIST)

**SPECIFIC ABSORPTION RATE (SAR)**

IEEE C95.1-1992, FCC OET Bulletin 65 (Supplement C), Industry Canada RSS-102(Issue 2) and ACA Radio communications (Electromagnetic Radiation – Human Exposure) Amendment Standard 2000 (No. 1)

**VHF MARINE TRANSCEIVER M/N: IC-M36**

**FCC ID: AFJ316800**



**ULTRATECH GROUP OF LABS**

3000 Bristol Circle, Oakville, Ontario, Canada L6H 6G4  
Tel. #: 905-829-1570, Fax. #: 905-829-8050, Email: vic@ultratech-labs.com, Website: http://www.ultratech-labs.com

**File #: ICOM-189-SAR**  
**October 30, 2008**

- Assessed by ITI (UK) Competent Body, NVLAP (USA) Accreditation Body & ACA/AUSTEL (Australia), VCCI (Japan)
- Accredited by Industry Canada (Canada) under ACC-LAB (Europe/Canada MRA and APEC/Canada MRA)
- Recognized/Listed by FCC (USA)
- All test results contained in this engineering test report are traceable to National Institute of Standards and Technology (NIST)

## EXHIBIT 9. SAR SYSTEM VERIFICATION USING DIPOLE REFERENCE

### 9.1.1. At 300 MHz

Flat phantom dimension (W × L × H) [mm]	420 × 700 × 200
Flat phantom shell thickness (d <sub>3</sub> ) [mm]	2.0
Flat phantom shell permittivity	2.98
Reference dipole dimension (L × h × d) [mm]	418 × 256 × 6.4
Dipole-to-Phantom (d <sub>2</sub> ) [mm]	13.0
Dipole-to-Liquid (d <sub>2</sub> + d <sub>3</sub> ) [mm]	15.0 (13.0 + 2.0)
Return Loss (at test frequency) [dB]	-24.0



### ULTRATECH GROUP OF LABS

3000 Bristol Circle, Oakville, Ontario, Canada L6H 6G4  
 Tel. #: 905-829-1570, Fax. #: 905-829-8050, Email: vic@ultratech-labs.com, Website: http://www.ultratech-labs.com

**File #: ICOM-189-SAR**  
**October 30, 2008**

- Assessed by ITI (UK) Competent Body, NVLAP (USA) Accreditation Body & ACA/AUSTEL (Australia), VCCI (Japan)
- Accredited by Industry Canada (Canada) under ACC-LAB (Europe/Canada MRA and APEC/Canada MRA)
- Recognized/Listed by FCC (USA)
- All test results contained in this engineering test report are traceable to National Institute of Standards and Technology (NIST)

## 9.2. SIMULATED TISSUE

### 9.2.1. Verification Result

#### 9.2.1.1. Reference SAR values at 300 MHz<sup>\*</sup>

Reference SAR <sub>1g</sub> [W/Kg]	3.0
Reference SAR <sub>s</sub> [W/Kg]	4.4
Reference SAR <sub>s_2cm</sub> [W/Kg]	2.1
Measured SAR <sub>1g</sub> [W/Kg]	2.74
Measured SAR <sub>s</sub> [W/Kg]	4.88
Measured SAR <sub>s_2cm</sub> [W/Kg]	2.30

#### 9.2.1.2. Verification at 300 MHz

Test date [MM/DD/YYYY]	10/20/2008
Test by	Steven Lu
Room temperature [°C]	21
Room humidity [%]	40
Simulated tissue temperature [°C]	21
Test frequency [MHz]	300
E-field Probe	M/N: ET-20, S/N: 03MAY-0027, Sensor Offset: 2.0 mm
Sensor Factor (η <sub>pd</sub> ) [mV/(mW/cm <sup>2</sup> )]	10.8
Amplifier Settings (AS <sub>1</sub> , AS <sub>2</sub> , AS <sub>3</sub> )	0.0087057284, 0.0082021415, 0.0084392299
Tissue Type	Brain
Measured conductivity [S/m]	0.85 (-2.0 %)
Measured dielectric constant	46.5 (+2.7 %)
Conversion Factor ( )	6.672
Sensitivity ( ) [W/Kg/mV]	4.447E-02
Power [mW]	500 (forward power)
Measurement Volume Specification (X × Y × Z)	5 <sub>pts</sub> × 5 <sub>pts</sub> × 7 <sub>pts</sub> , 28 <sub>mm</sub> × 28 <sub>mm</sub> × 30 <sub>mm</sub> ; Resolution: 7 <sub>mm</sub> × 7 <sub>mm</sub> × 5 <sub>mm</sub>
SAR <sub>1g</sub> [W/Kg]	1.37
SAR <sub>s</sub> [W/Kg]	2.44

\* All SAR values in 9.2.1.1 are normalized to a forward power of 1 W.

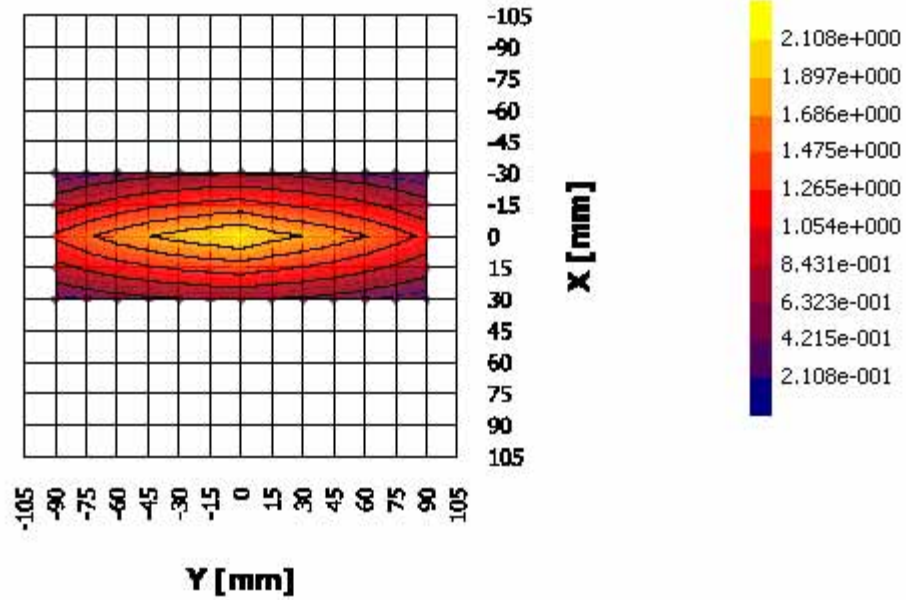
- Assessed by ITI (UK) Competent Body, NVLAP (USA) Accreditation Body & ACA/AUSTEL (Australia), VCCI (Japan)
- Accredited by Industry Canada (Canada) under ACC-LAB (Europe/Canada MRA and APEC/Canada MRA)
- Recognized/Listed by FCC (USA)
- All test results contained in this engineering test report are traceable to National Institute of Standards and Technology (NIST)

**SPECIFIC ABSORPTION RATE (SAR)**

IEEE C95.1-1992, FCC OET Bulletin 65 (Supplement C), Industry Canada RSS-102(Issue 2) and ACA Radio communications (Electromagnetic Radiation – Human Exposure) Amendment Standard 2000 (No. 1)

**VHF MARINE TRANSCEIVER M/N: IC-M36**

**FCC ID: AFJ316800**



**ULTRATECH GROUP OF LABS**

3000 Bristol Circle, Oakville, Ontario, Canada L6H 6G4  
Tel. #: 905-829-1570, Fax. #: 905-829-8050, Email: vic@ultratech-labs.com, Website: http://www.ultratech-labs.com

File #: ICOM-189-SAR  
October 30, 2008

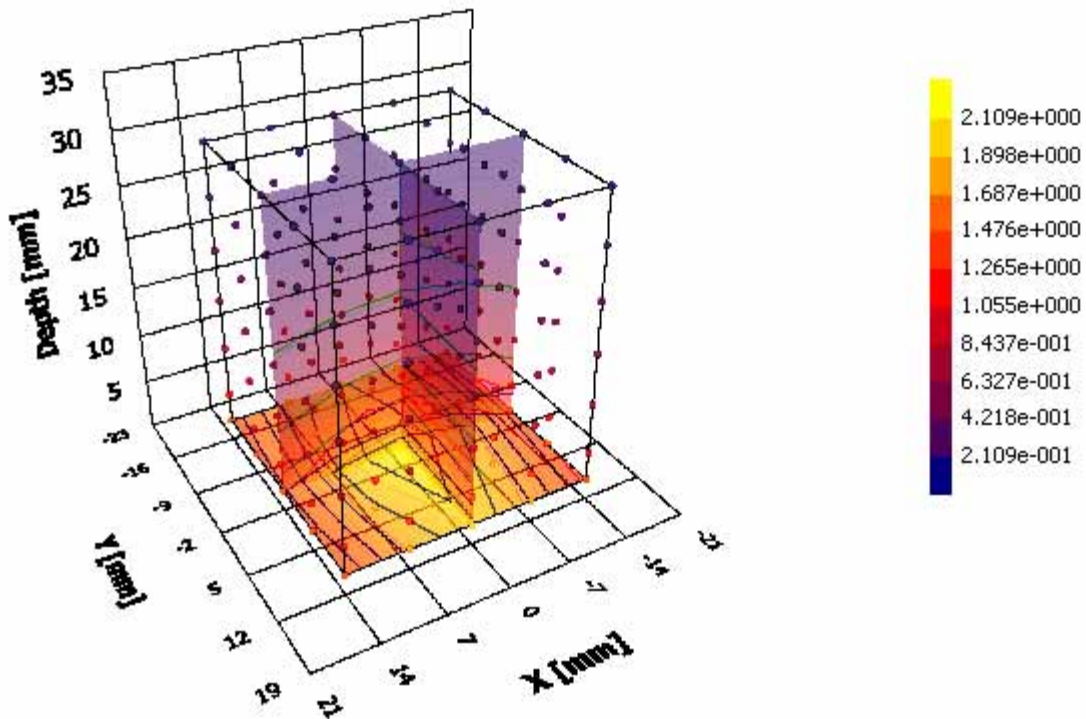
- Assessed by ITI (UK) Competent Body, NVLAP (USA) Accreditation Body & ACA/AUSTEL (Australia), VCCI (Japan)
- Accredited by Industry Canada (Canada) under ACC-LAB (Europe/Canada MRA and APEC/Canada MRA)
- Recognized/Listed by FCC (USA)
- All test results contained in this engineering test report are traceable to National Institute of Standards and Technology (NIST)

**SPECIFIC ABSORPTION RATE (SAR)**

IEEE C95.1-1992, FCC OET Bulletin 65 (Supplement C), Industry Canada RSS-102(Issue 2) and ACA Radio communications (Electromagnetic Radiation – Human Exposure) Amendment Standard 2000 (No. 1)

**VHF MARINE TRANSCEIVER M/N: IC-M36**

**FCC ID: AFJ316800**

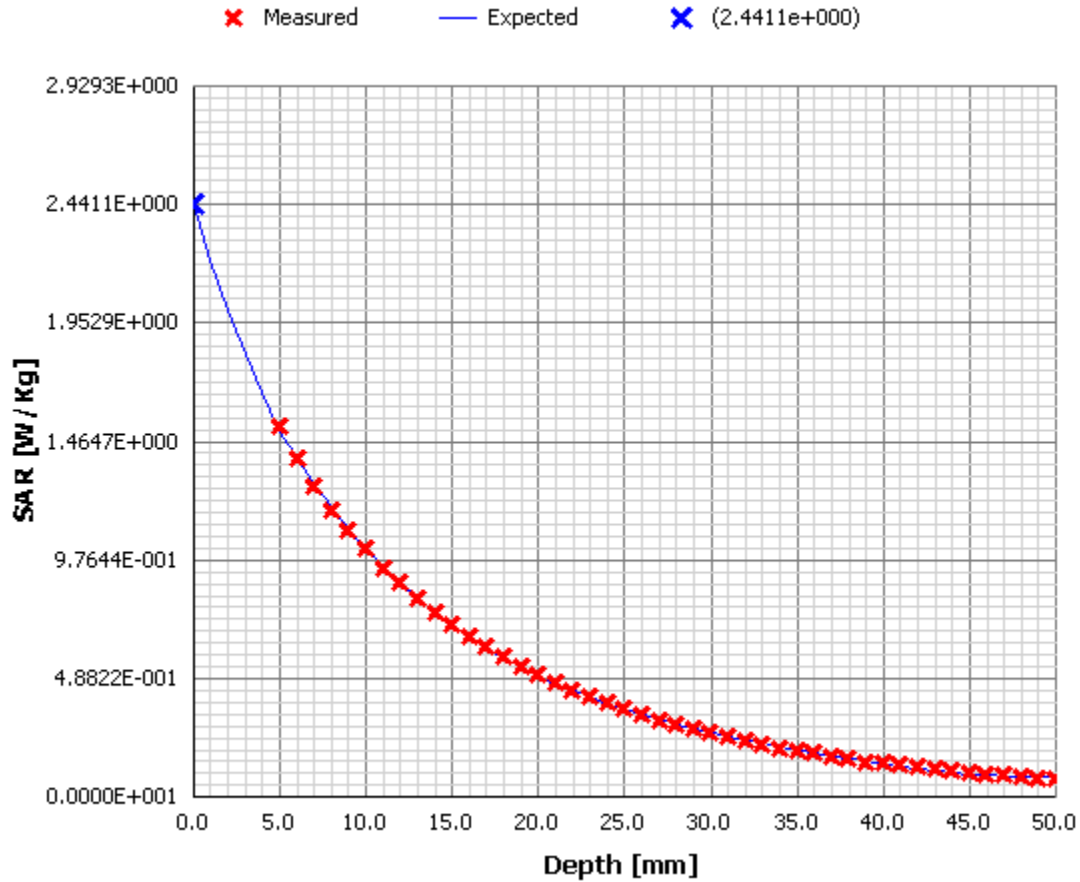


**ULTRATECH GROUP OF LABS**

3000 Bristol Circle, Oakville, Ontario, Canada L6H 6G4  
Tel. #: 905-829-1570, Fax. #: 905-829-8050, Email: vic@ultratech-labs.com, Website: http://www.ultratech-labs.com

**File #: ICOM-189-SAR**  
**October 30, 2008**

- Assessed by ITI (UK) Competent Body, NVLAP (USA) Accreditation Body & ACA/AUSTEL (Australia), VCCI (Japan)
- Accredited by Industry Canada (Canada) under ACC-LAB (Europe/Canada MRA and APEC/Canada MRA)
- Recognized/Listed by FCC (USA)
- All test results contained in this engineering test report are traceable to National Institute of Standards and Technology (NIST)



**ULTRATECH GROUP OF LABS**

3000 Bristol Circle, Oakville, Ontario, Canada L6H 6G4  
Tel. #: 905-829-1570, Fax. #: 905-829-8050, Email: vic@ultratech-labs.com, Website: http://www.ultratech-labs.com

**File #: ICOM-189-SAR**  
**October 30, 2008**

- Assessed by ITI (UK) Competent Body, NVLAP (USA) Accreditation Body & ACA/AUSTEL (Australia), VCCI (Japan)
- Accredited by Industry Canada (Canada) under ACC-LAB (Europe/Canada MRA and APEC/Canada MRA)
- Recognized/Listed by FCC (USA)
- All test results contained in this engineering test report are traceable to National Institute of Standards and Technology (NIST)

## EXHIBIT 10. SAR CALCULATION SUMMARY

### 10.1. TERMINOLOGY

AS <sub>i</sub>	Amplifier Setting for channel i (i = 1, 2, 3)
Pd	Power density at the measurement point [mW/cm <sup>2</sup> ]
PO <sub>tot_air</sub>	Probe Output in the air [mV]
PO <sub>tot_tissue</sub>	Probe Output in the simulated tissue [mV]
η <sub>E2</sub>	Sensor Factor to the  E  <sup>2</sup> , an arbitrary value 10.8/3,770 [mV/(V/m) <sup>2</sup> ]
η <sub>pd</sub>	Sensor Factor to the uniform power density, an arbitrary value 10.8 [mV/(mW/cm <sup>2</sup> )]
γ	Conversion factor; ratio of sensor response in air to response in the dielectric media
ζ	Sensitivity of the probe in the simulated tissue [W/Kg/mV]
c	Specific heat capacity of the simulated tissue [J/Kg/°C]
@cal	Conductivity of the simulated tissue during the thermal transfer calibration [S/m]
@meas	Conductivity of the simulated tissue during the SAR measurement [S/m]
	ass density of the simulated tissue [Kg/m <sup>3</sup> ]
T/ t	Initial rate of tissue heating, before thermal diffusion takes place [°C /sec]

#### 10.1.1. Sensor factor(η<sub>pd</sub> and η<sub>E2</sub>) in the air (Z<sub>0</sub> = 377[Ω])

$$\eta_{pd} = 10.8 [mV / (mW / cm^2)] \equiv \eta_{E2} = \frac{10.8}{3,770} [mV / (V / m)^2]$$

$$Pd [mW / cm^2] = \frac{PO_{tot}}{\eta_{pd}}, \quad |E|^2 [(V / m)^2] = \frac{PO_{tot}}{\eta_{E2}} \quad \text{and} \quad SAR [W / Kg] = \frac{\sigma \times \frac{PO_{tot}}{\eta_{E2}}}{\rho}$$

#### 10.1.2. Amplifier settings(AS<sub>i</sub>) and probe output

$$AS_i = \frac{\eta_{pd}}{V_{max_i} - DC_i} \times \cos^2(\varphi - \theta_i) \times Pd$$

$$PO_1 [mV] = (V_1 - DC_1) \times AS_1 \equiv |E_1|^2 \times \eta_{E2}$$

$$PO_2 [mV] = (V_2 - DC_2) \times AS_2 \equiv |E_2|^2 \times \eta_{E2}$$

$$PO_3 [mV] = (V_3 - DC_3) \times AS_3 \equiv |E_3|^2 \times \eta_{E2}$$

$$PO_{tot} [mV] \equiv |E|^2 \times \eta_{E2} = (|E_1|^2 + |E_2|^2 + |E_3|^2) \times \eta_{E2} = |E_1|^2 \times \eta_{E2} + |E_2|^2 \times \eta_{E2} + |E_3|^2 \times \eta_{E2}$$

$$\equiv PO_1 + PO_2 + PO_3$$



**10.1.3. Conversion factor ( $\gamma$ ) in the simulated tissue**

$$|E_{tissue}|^2 = \frac{PO_{tot\_tissue}}{\eta_{E2}} \times \frac{1}{\gamma}$$

$$SAR_t = SAR_{tissue} = \frac{\sigma_{@cal} \times |E_{tissue}|^2}{\rho} = \frac{\sigma_{@cal} \times \frac{PO_{tot\_tissue}}{\eta_{E2}} \times \frac{1}{\gamma}}{\rho [Kg / m^3]} = \left( \frac{\sigma_{@cal} \times \frac{PO_{tot\_tissue}}{\eta_{E2}}}{\rho} \right) \times \frac{1}{\gamma} = SAR_{PO_{tot\_tissue}} \times \frac{1}{\gamma}$$

**10.1.4. Conversion factor ( $\gamma$ ) Calculation**

$$\frac{\delta}{\delta P} SAR_t = \frac{\delta}{\delta P} SAR_{tissue}$$

$$\frac{\delta}{\delta P} \left( c \times \frac{\Delta T}{\Delta t} \right) = \frac{\delta}{\delta P} \left( \frac{\sigma_{@cal} \times |E_{tissue}|^2}{\rho} \right) = \frac{\delta}{\delta P} \left( \frac{\sigma_{@cal} \times \frac{PO_{tot\_tissue}}{\eta_{E2}} \times \frac{1}{\gamma}}{\rho} \right)$$

$$\gamma = \frac{\frac{\delta}{\delta P} SAR_{PO_{tot\_tissue}}}{\frac{\delta}{\delta P} SAR_t} = \frac{\frac{\sigma_{@cal} \times \frac{\frac{\delta}{\delta P} PO_{tot\_tissue}}{\eta_{E2}}}{\rho}}{c \times \frac{\delta}{\delta P} \frac{\Delta T}{\Delta t}} = \frac{\sigma_{@cal}}{\eta_{E2} \times c \times \rho} \times \frac{\frac{\delta}{\delta P} PO_{tot\_tissue}}{\frac{\delta}{\delta P} \frac{\Delta T}{\Delta t}}$$

**10.1.5. Sensitivity ( $\zeta$ ) in the simulated tissue**

$$\zeta [W / Kg / mV] = \frac{\sigma_{@meas}}{\eta_{E2} \times 1,000 [Kg / m^3] \times \gamma}$$

**10.1.6. SAR calculation**

$$SAR [W / Kg] = \zeta [W / Kg / mV] \times PO_{tot\_tissue} [mV]$$

- Assessed by ITI (UK) Competent Body, NVLAP (USA) Accreditation Body & ACA/AUSTEL (Australia), VCCI (Japan)
- Accredited by Industry Canada (Canada) under ACC-LAB (Europe/Canada MRA and APEC/Canada MRA)
- Recognized/Listed by FCC (USA)
- All test results contained in this engineering test report are traceable to National Institute of Standards and Technology (NIST)