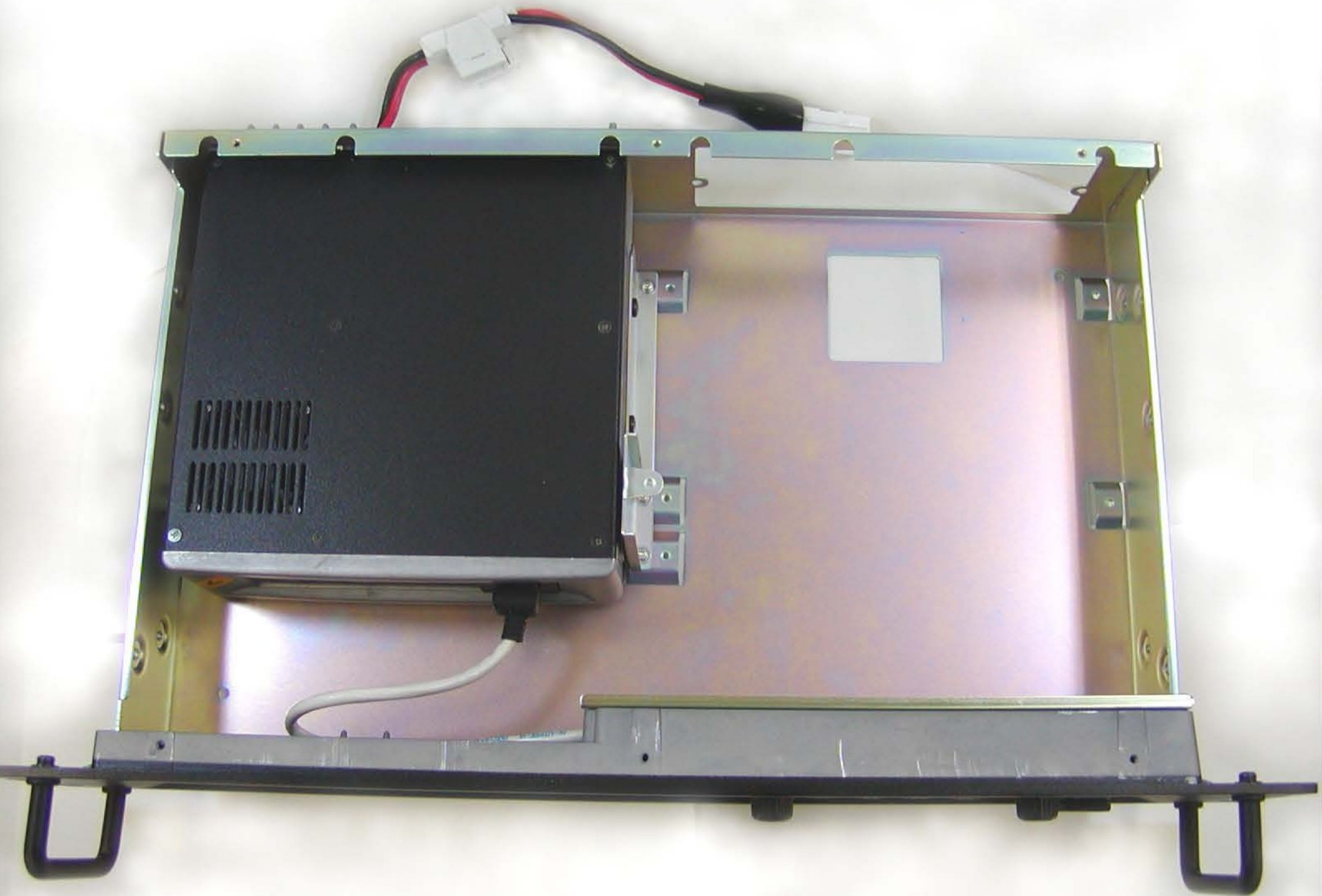
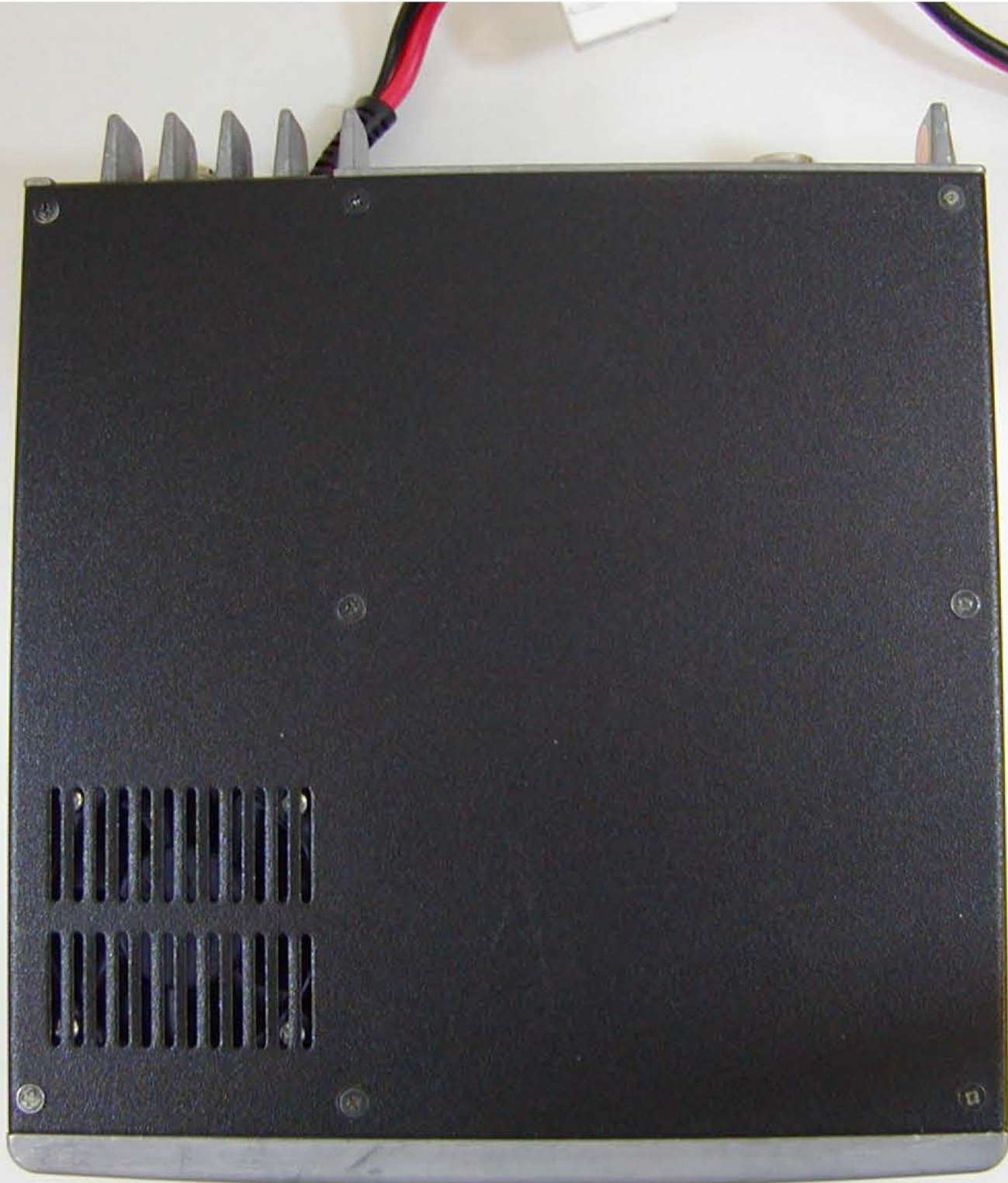




⚠ Device must be restricted to occupational use to satisfy FCC RF exposure compliance. See owner's manual for specific operating requirements.
CAUTION

Rcom IC-FM6000
FCC ID: AFJ306301
IC: 292D-308301
SERIAL NO. 0100005
This device complies with Part 15 of the FCC Rules. Operation is subject to the condition that this device does not cause harmful interference.

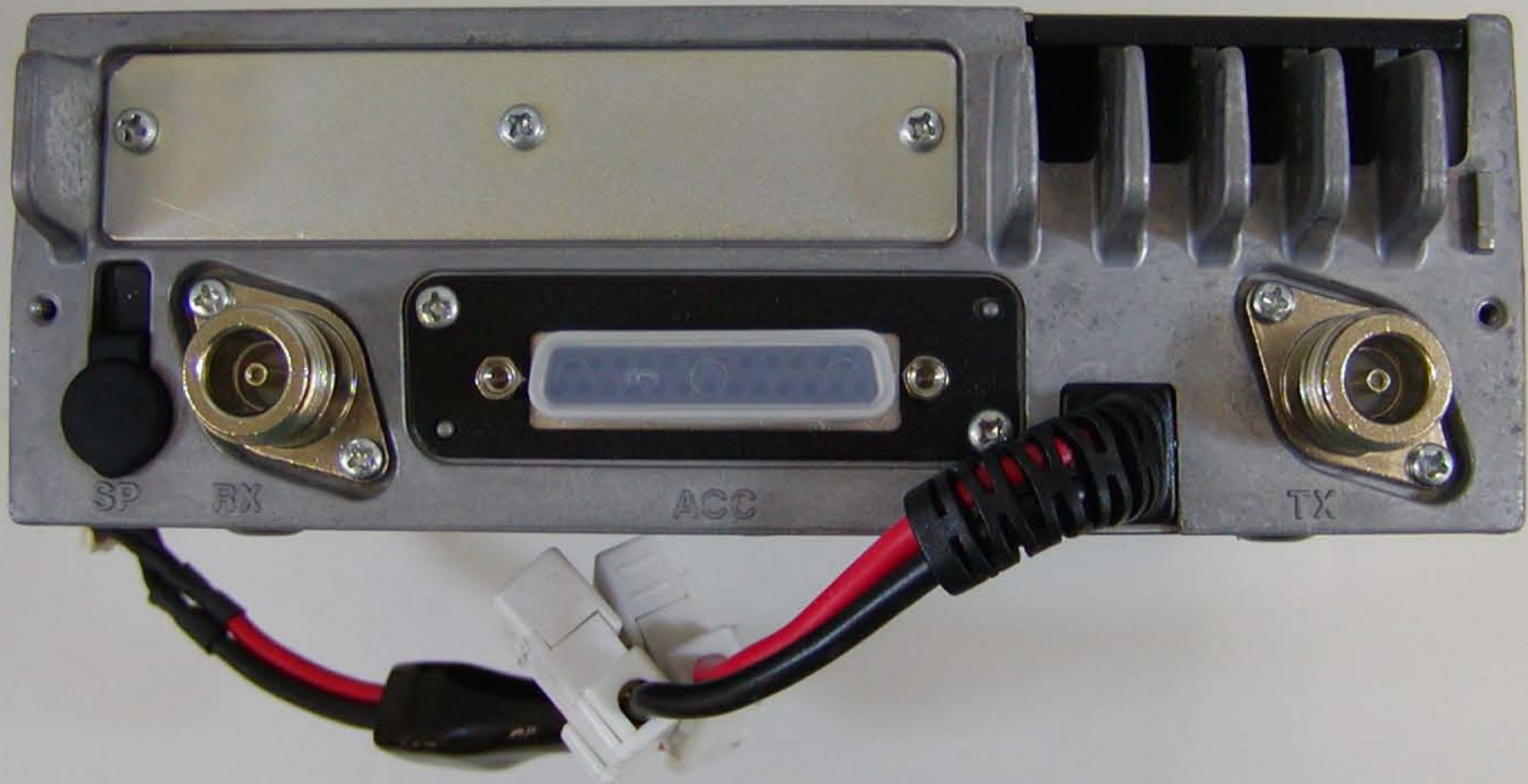




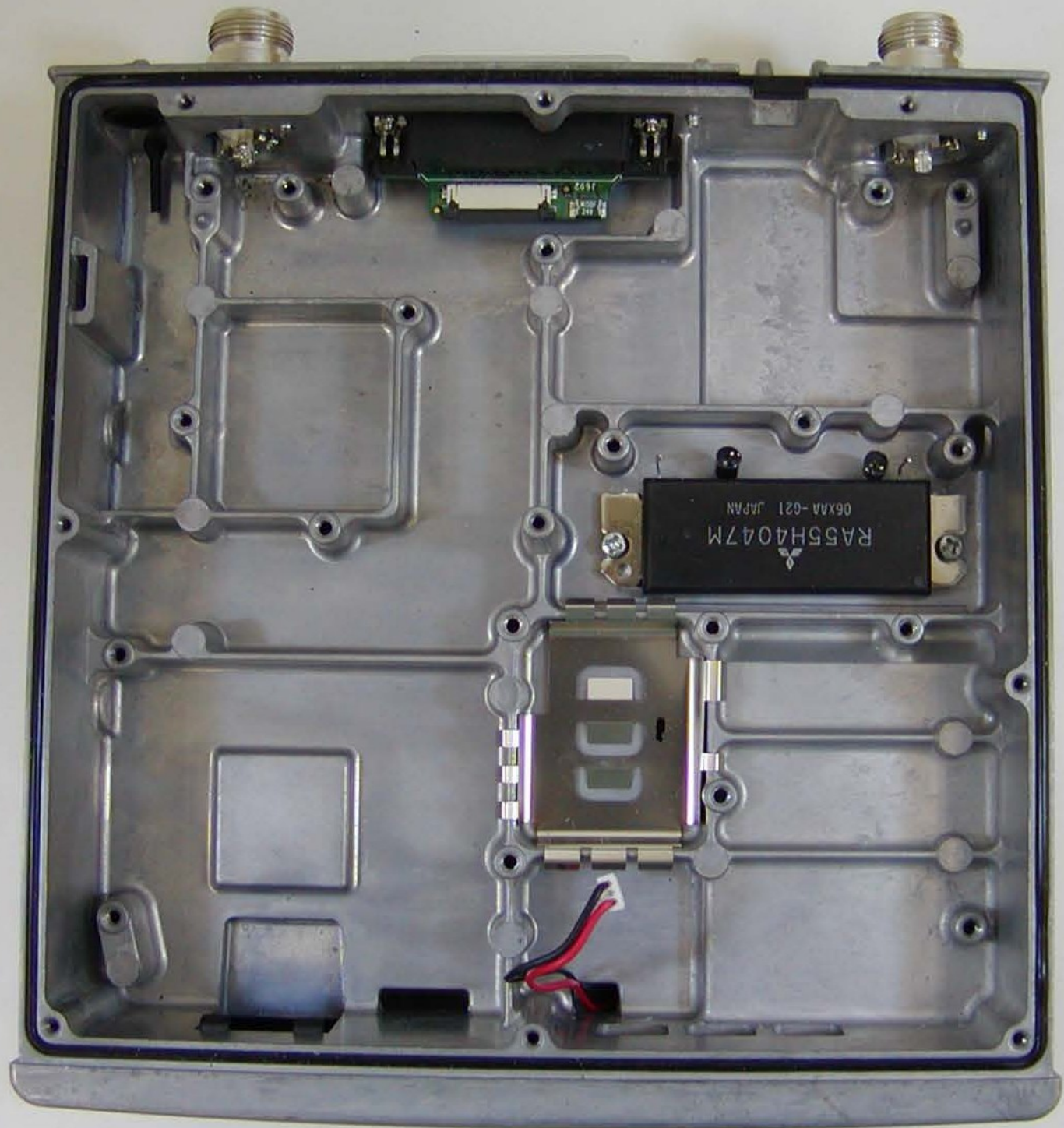


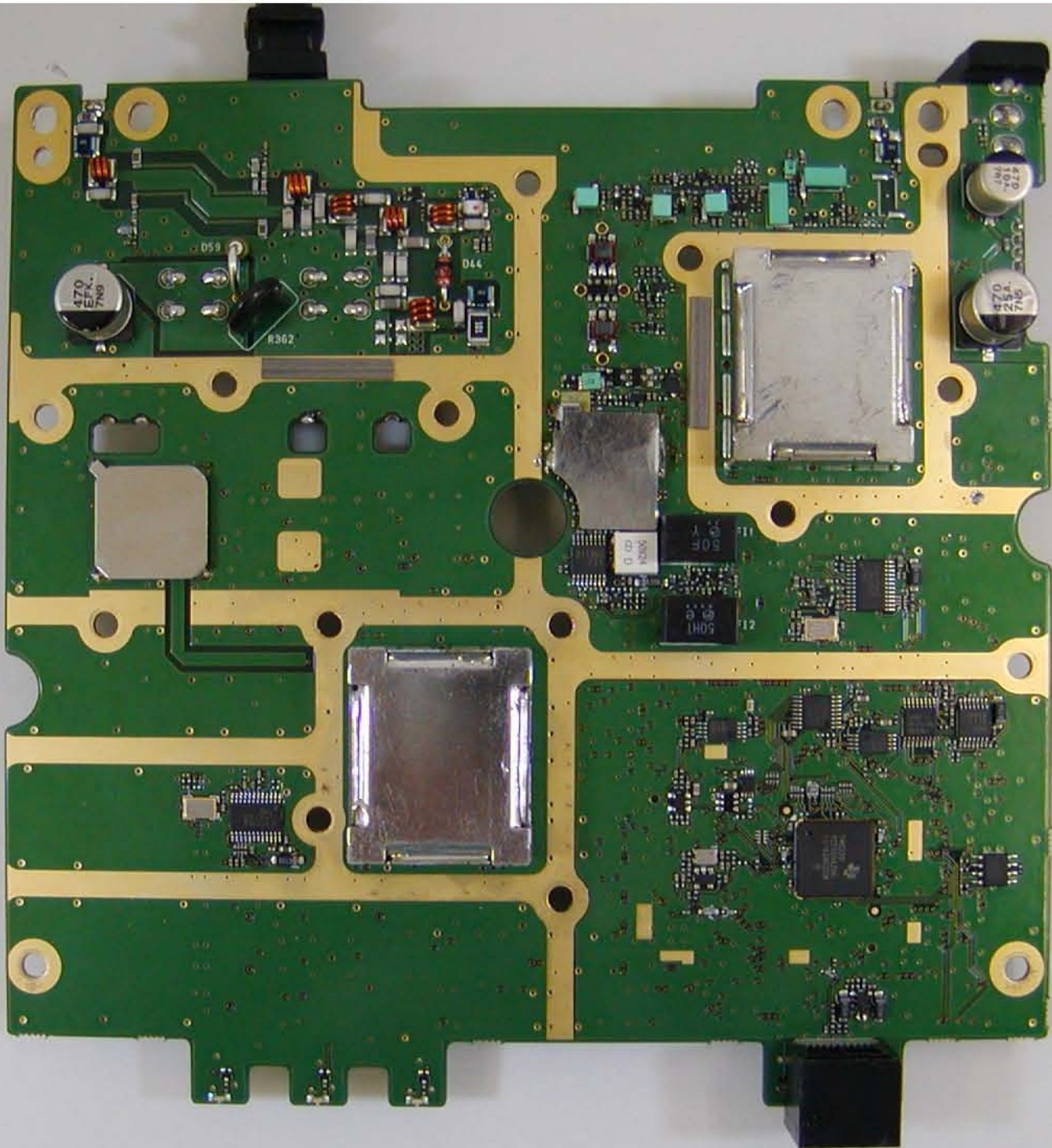


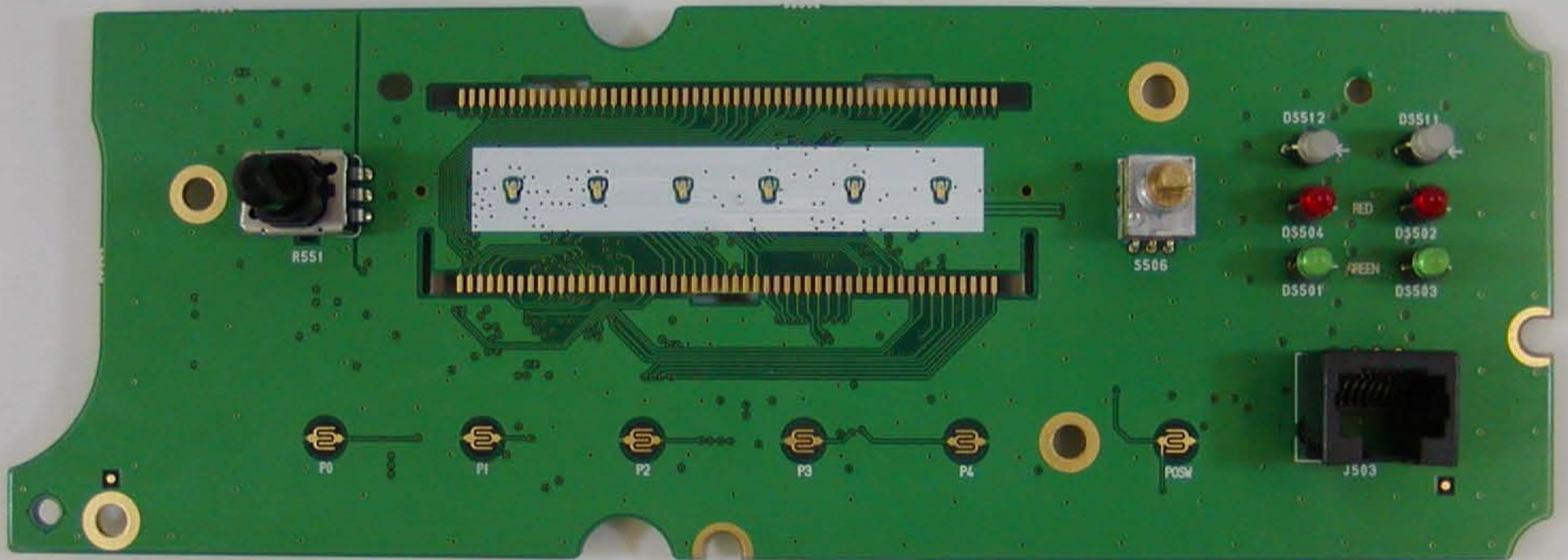




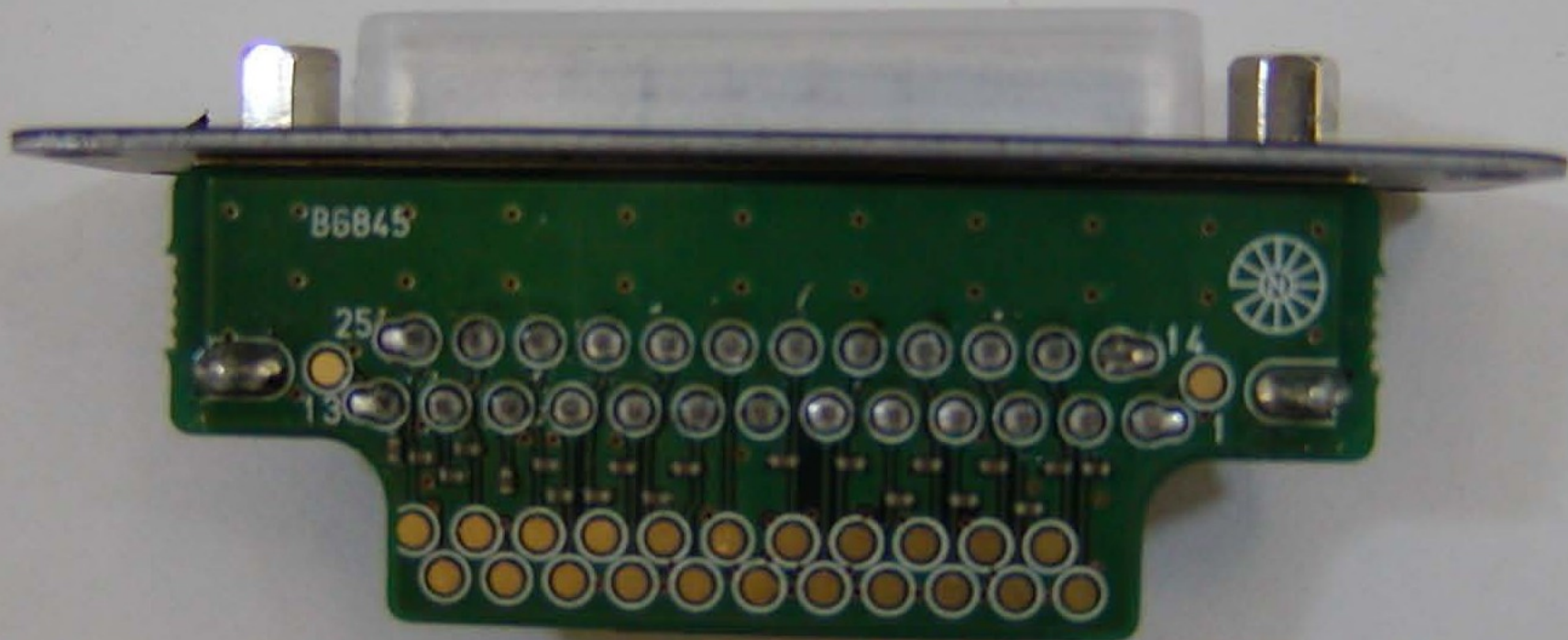
ICOM IC-FR6000
FCC ID: AFJ306301
icom inc. MADE IN JAPAN
SERIAL NO. 0100005
This device complies with Part 15 of the FCC Rules. Operation is subject to the condition that this device does not cause harmful interference.











B6845

25

13

14

