

SANYO FCC ID: AEZSCP-81H -- 835MHz. Head SAR

SAM Phantom; Right Hand Section; Probe:ET3DV6 - SN1677; ConvF(6.70,6.70,6.70)

Med. Parameters 835 MHz Brain: $\sigma = 0.92$ mho/m $\epsilon_r = 40.6$ $\rho = 1.00$ g/cm³; Antenna Position -- Out; Crest Factor 1.0

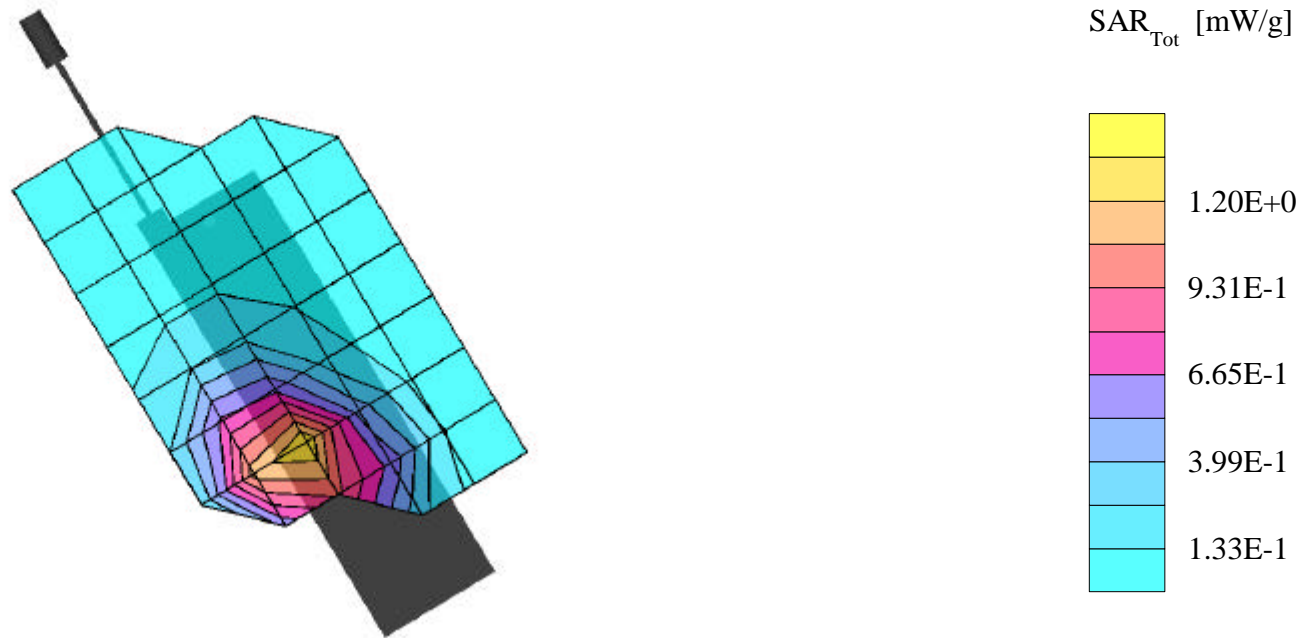
SAR (1g): 1.38 mW/g, SAR (10g): 0.882 mW/g

SANYO Tri Mode Phone Model:SCP-8100; FCC ID:AEZSCP-81H

Standard Battery; Ambient Temp. = 19.0°C / Meas. Tissue Temp. = 17.4°C

AMPS Mode, Ch.0383 [836.49MHz]; Conducted Power = 23.9dBm; Right Head, Cheek/Touch position

Test Date -- 02/24/2003 [FCC/OET Bulletin 65 - Supplement C, July 2001]



SANYO FCC ID: AEZSCP-81H -- 835MHz. Head SAR

SAM Phantom; Right Hand Section; Probe:ET3DV6 - SN1677; ConvF(6.70,6.70,6.70)

Med. Parameters 835 MHz Brain: $\sigma = 0.92$ mho/m $\epsilon_r = 40.6$ $\rho = 1.00$ g/cm³; Antenna Position -- Out; Crest Factor 1.0

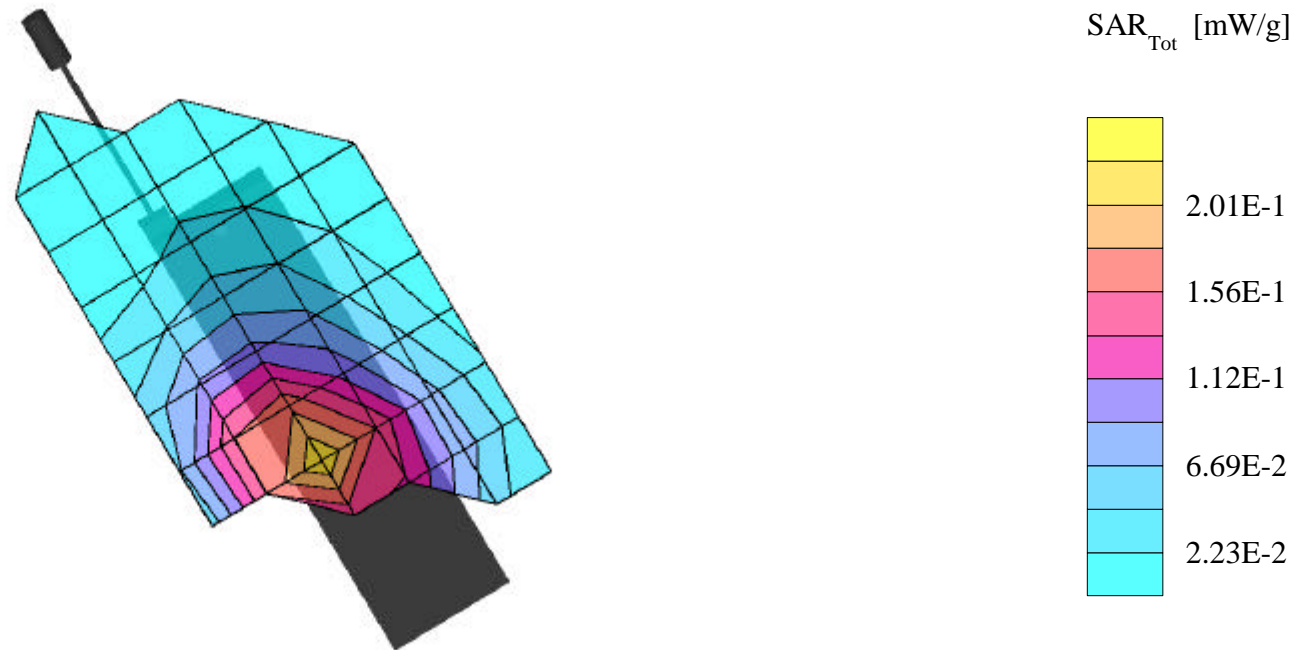
SAR (1g): 0.211 mW/g, SAR (10g): 0.150 mW/g

SANYO Tri Mode Phone Model:SCP-8100; FCC ID:AEZSCP-81H

Standard Battery; Ambient Temp. = 21.4°C / Meas. Tissue Temp. = 18.7°C

AMPS Mode, Ch.0383 [836.49MHz]; Conducted Power = 23.9dBm; Right Head, Ear/15° Tilt position

Test Date -- 02/24/2003 [FCC/OET Bulletin 65 - Supplement C, July 2001]



SANYO FCC ID: AEZSCP-81H -- 835MHz. Head SAR

SAM Phantom; Left Hand Section; Probe:ET3DV6 - SN1677; ConvF(6.70,6.70,6.70)

Med. Parameters 835 MHz Brain: $\sigma = 0.92$ mho/m $\epsilon_r = 40.6$ $\rho = 1.00$ g/cm³; Antenna Position -- Out; Crest Factor 1.0

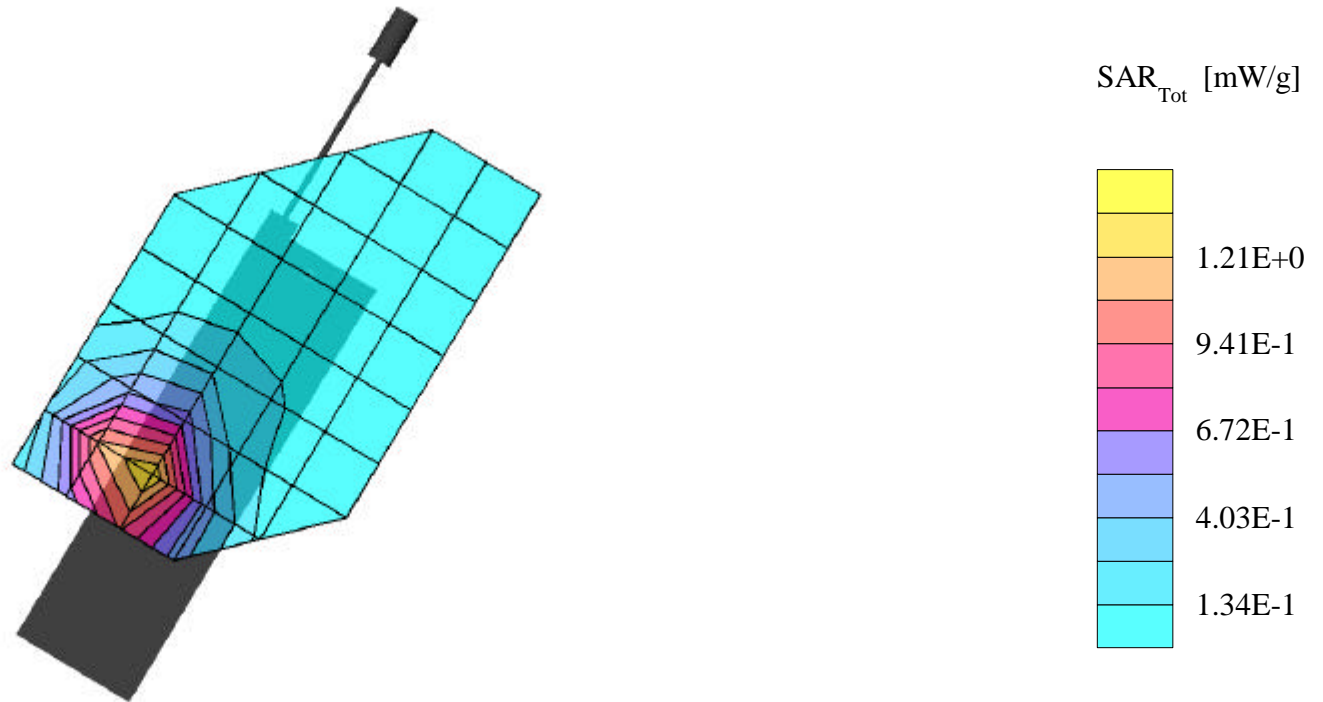
SAR (1g): 1.42 mW/g, SAR (10g): 0.881 mW/g

SANYO Tri Mode Phone Model:SCP-8100; FCC ID:AEZSCP-81H

Standard Battery; Ambient Temp. = 19.0°C / Meas. Tissue Temp. = 17.4°C

AMPS Mode, Ch.0383 [836.49MHz]; Conducted Power = 23.9dBm; Left Head, Cheek/Touch position

Test Date -- 02/24/2003 [FCC/OET Bulletin 65 - Supplement C, July 2001]



SANYO FCC ID: AEZSCP-81H -- 835MHz. Head SAR

SAM Phantom; Left Hand Section; Probe:ET3DV6 - SN1677; ConvF(6.70,6.70,6.70)

Med. Parameters 835 MHz Brain: $\sigma = 0.92$ mho/m $\epsilon_r = 40.6$ $\rho = 1.00$ g/cm³; Antenna Position -- Out; Crest Factor 1.0

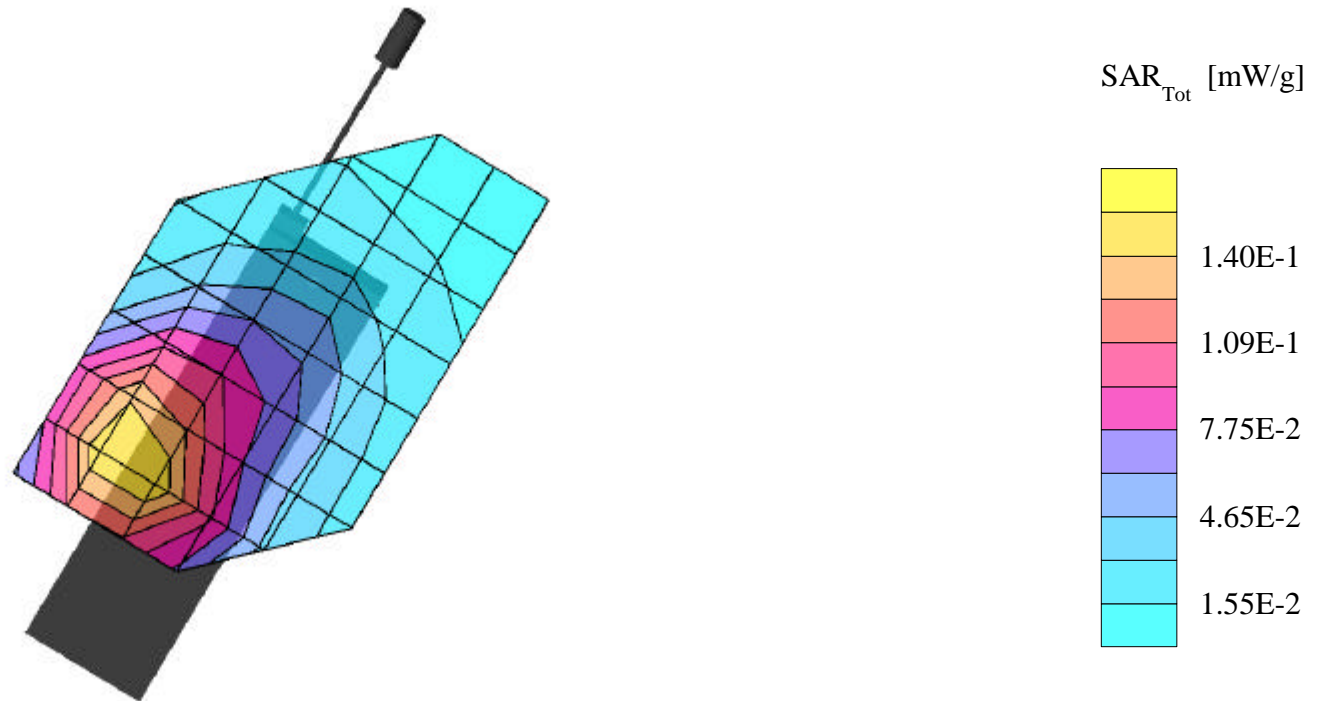
SAR (1g): 0.160 mW/g, SAR (10g): 0.113 mW/g

SANYO Tri Mode Phone Model:SPC-8100; FCC ID:AEZSCP-81H

Standard Battery; Ambient Temp. = 21.4°C / Meas. Tissue Temp. = 18.7°C

AMPS Mode, Ch.0383 [836.49MHz]; Conducted Power = 23.9dBm; Left Head, Ear/15° Tilt position

Test Date -- 02/24/2003 [FCC/OET Bulletin 65 - Supplement C, July 2001]



SANYO FCC ID: AEZSCP-81H -- 835MHz. Head SAR

SAM Phantom; Right Hand Section; Probe:ET3DV6 - SN1677; ConvF(6.70,6.70,6.70)

Med. Parameters 835 MHz Brain: $\sigma = 0.92$ mho/m $\epsilon_r = 40.6$ $\rho = 1.00$ g/cm³; Antenna Position -- In; Crest Factor 1.0

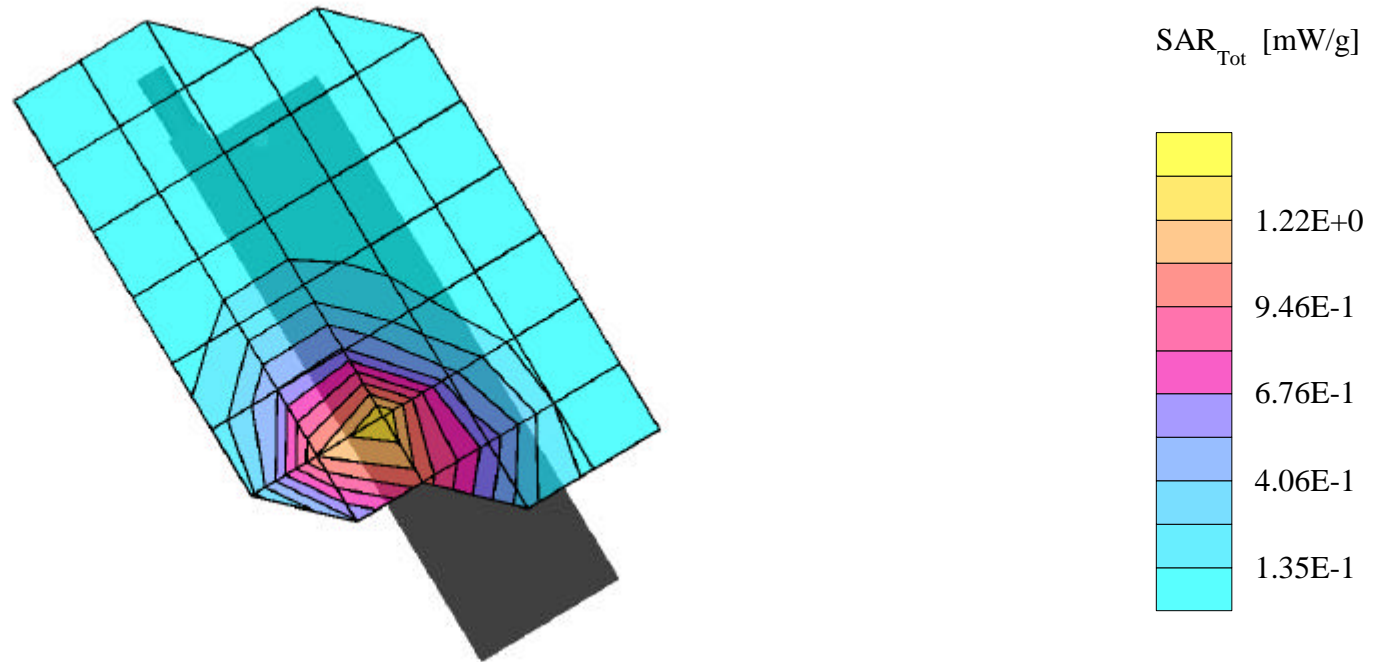
SAR (1g): 1.37 mW/g, SAR (10g): 0.869 mW/g

SANYO Tri Mode Phone Model:SCP-8100; FCC ID:AEZSCP-81H

Standard Battery; Ambient Temp. = 19.0°C / Meas. Tissue Temp. = 17.4°C

Cellular CDMA Mode, Ch.0383 [836.49MHz]; Conducted Power = 23.9dBm; Right Head, Cheek/Touch position

Test Date -- 02/24/2003 [FCC/OET Bulletin 65 - Supplement C, July 2001]



SANYO FCC ID: AEZSCP-81H -- 835MHz. Head SAR

SAM Phantom; Right Hand Section; Probe:ET3DV6 - SN1677; ConvF(6.70,6.70,6.70)

Med. Parameters 835 MHz Brain: $\sigma = 0.92$ mho/m $\epsilon_r = 40.6$ $\rho = 1.00$ g/cm³; Antenna Position -- Out; Crest Factor 1.0

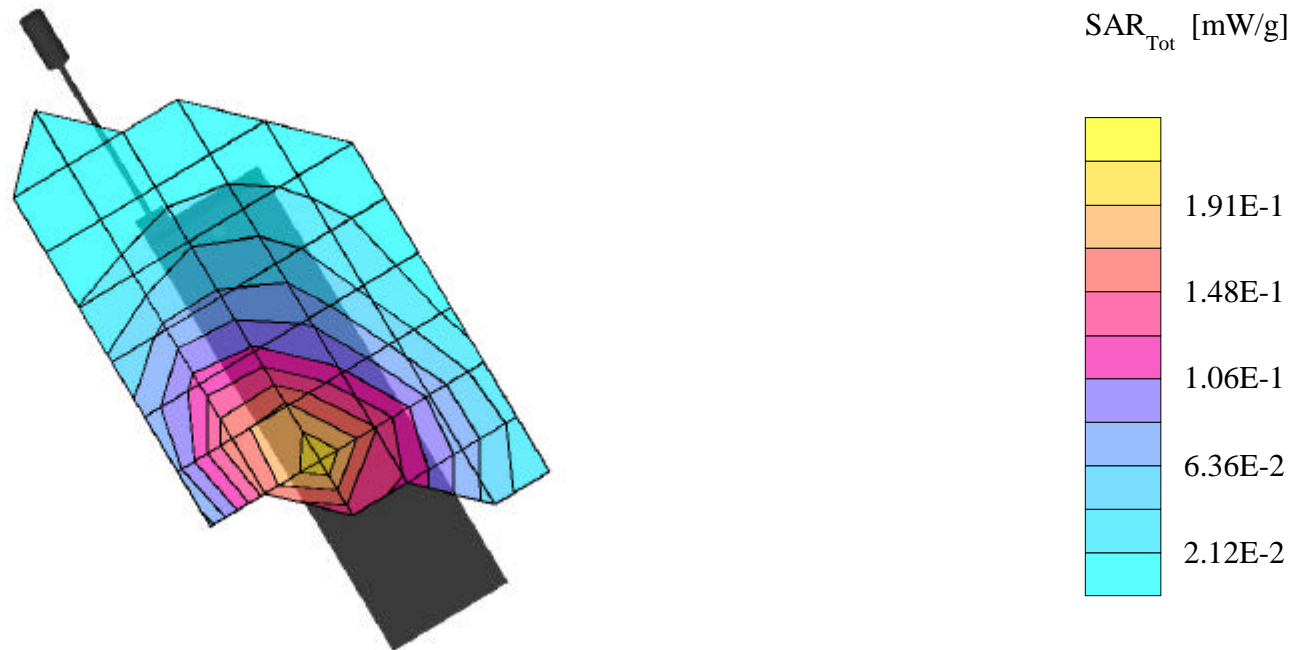
SAR (1g): 0.202 mW/g, SAR (10g): 0.144 mW/g

SANYO Tri Mode Phone Model:SCP-8100; FCC ID:AEZSCP-81H

Standard Battery; Ambient Temp. = 21.4°C / Meas. Tissue Temp. = 18.7°C

Cellular CDMA Mode, Ch.0383 [836.49MHz]; Conducted Power = 23.9dBm; Right Head, Ear/15° Tilt position

Test Date -- 02/24/2003 [FCC/OET Bulletin 65 - Supplement C, July 2001]



SANYO FCC ID: AEZSCP-81H -- 835MHz. Head SAR

SAM Phantom; Left Hand Section; Probe:ET3DV6 - SN1677; ConvF(6.70,6.70,6.70)

Med. Parameters 835 MHz Brain: $\sigma = 0.92$ mho/m $\epsilon_r = 40.6$ $\rho = 1.00$ g/cm³; Antenna Position -- Out; Crest Factor 1.0

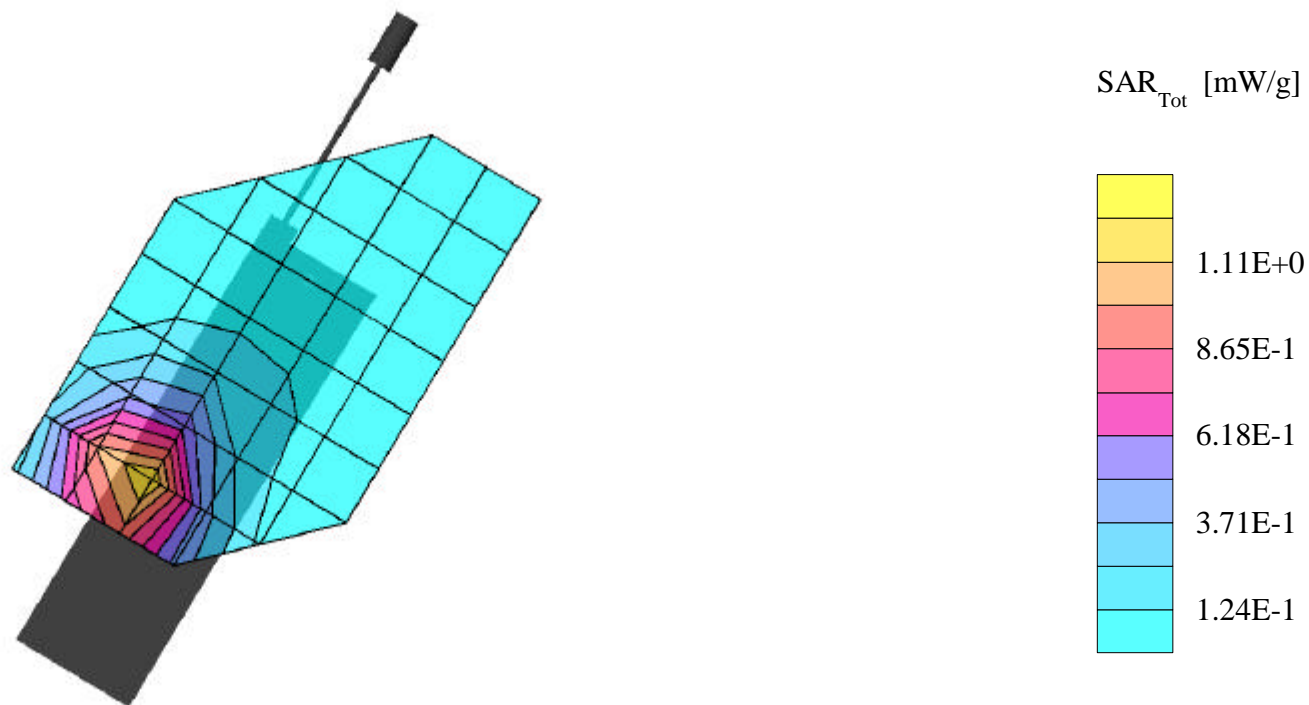
SAR (1g): 1.34 mW/g, SAR (10g): 0.839 mW/g

SANYO Tri Mode Phone Model:SPC-8100; FCC ID:AEZSCP-81H

Standard Battery; Ambient Temp. = 19.4°C / Meas. Tissue Temp. = 19.2°C

Cellular CDMA Mode, Ch.0383 [836.49MHz]; Conducted Power = 23.9dBm; Left Head, Cheek/Touch position

Test Date -- 02/24/2003 [FCC/OET Bulletin 65 - Supplement C, July 2001]



SANYO FCC ID: AEZSCP-81H -- 835MHz. Head SAR

SAM Phantom; Left Hand Section; Probe:ET3DV6 - SN1677; ConvF(6.70,6.70,6.70)

Med. Parameters 835 MHz Brain: $\sigma = 0.92$ mho/m $\epsilon_r = 40.6$ $\rho = 1.00$ g/cm³; Antenna Position -- Out; Crest Factor 1.0

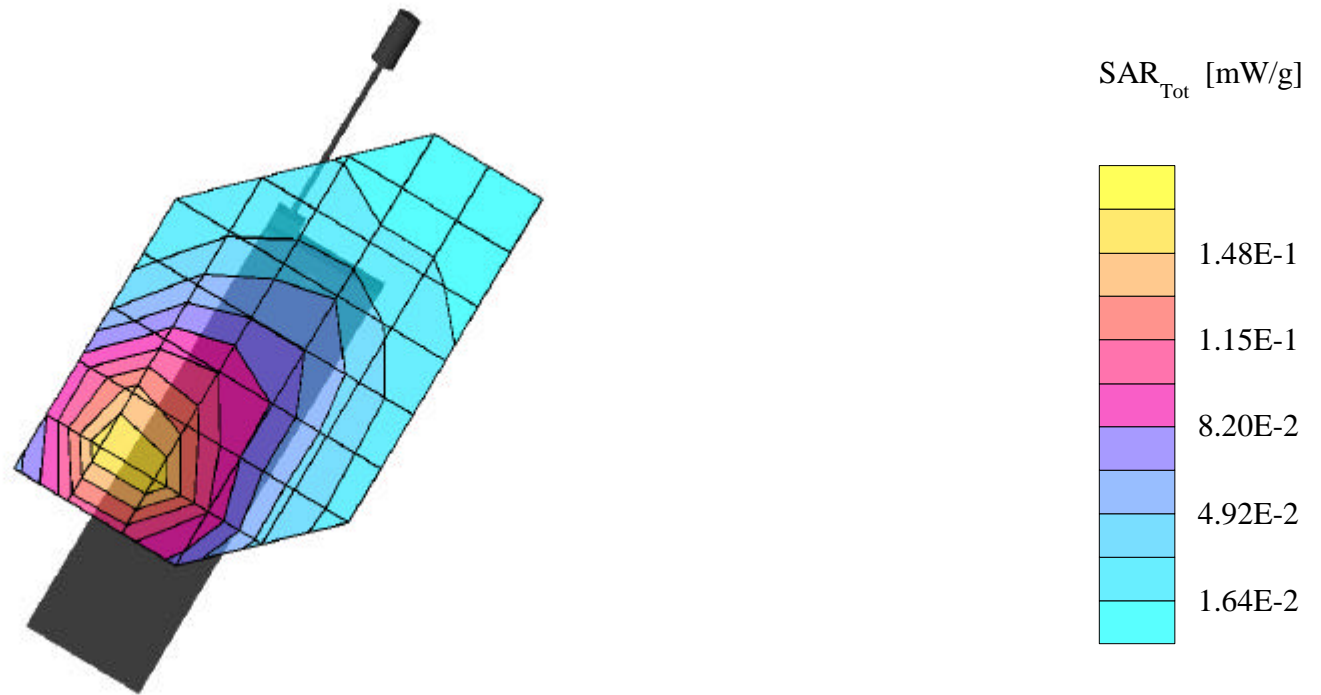
SAR (1g): 0.169 mW/g, SAR (10g): 0.119 mW/g

SANYO Tri Mode Phone Model:SPC-8100; FCC ID:AEZSCP-81H

Standard Battery; Ambient Temp. = 21.4°C / Meas. Tissue Temp. = 18.7°C

Cellular CDMA Mode, Ch.0383 [836.49MHz]; Conducted Power = 23.9dBm; Left Head, Ear/15° Tilt position

Test Date -- 02/24/2003 [FCC/OET Bulletin 65 - Supplement C, July 2001]



SANYO FCC ID: AEZSCP-81H -- 1900MHz. Head SAR

SAM Phantom; Right Hand Section; Probe:ET3DV6 - SN1677; ConvF(5.30,5.30,5.30)

Med. Parameters 1900 MHz Brain: $\sigma = 1.40$ mho/m $\epsilon_r = 39.5$ $\rho = 1.00$ g/cm³; Antenna Position -- In; Crest Factor 1.0

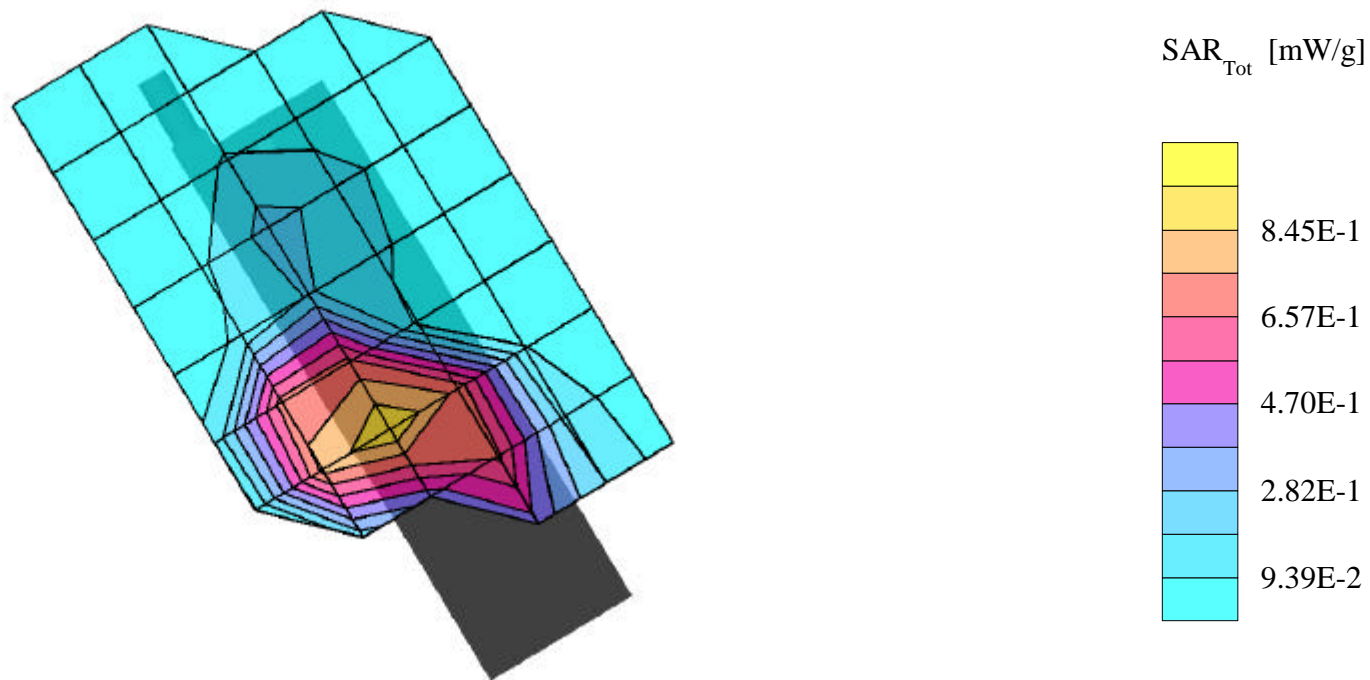
SAR (1g): 1.22 mW/g, SAR (10g): 0.661 mW/g

SANYO Tri Mode Phone Model:SCP-8100; FCC ID:AEZSCP-81H

Standard Battery; Ambient Temp. = 19.4°C / Meas. Tissue Temp. = 18.7°C

PCS CDMA Mode, Ch.0025 [1851.25MHz]; Conducted Power = 24.5dBm; Right Head, Cheek/Touch position

Test Date -- 02/24/2003 [FCC/OET Bulletin 65 - Supplement C, July 2001]



SANYO FCC ID: AEZSCP-81H -- 1900MHz. Head SAR

SAM Phantom; Right Hand Section; Probe:ET3DV6 - SN1677; ConvF(5.30,5.30,5.30)

Med. Parameters 1900 MHz Brain: $\sigma = 1.40$ mho/m $\epsilon_r = 39.5$ $\rho = 1.00$ g/cm³; Antenna Position -- Out; Crest Factor 1.0

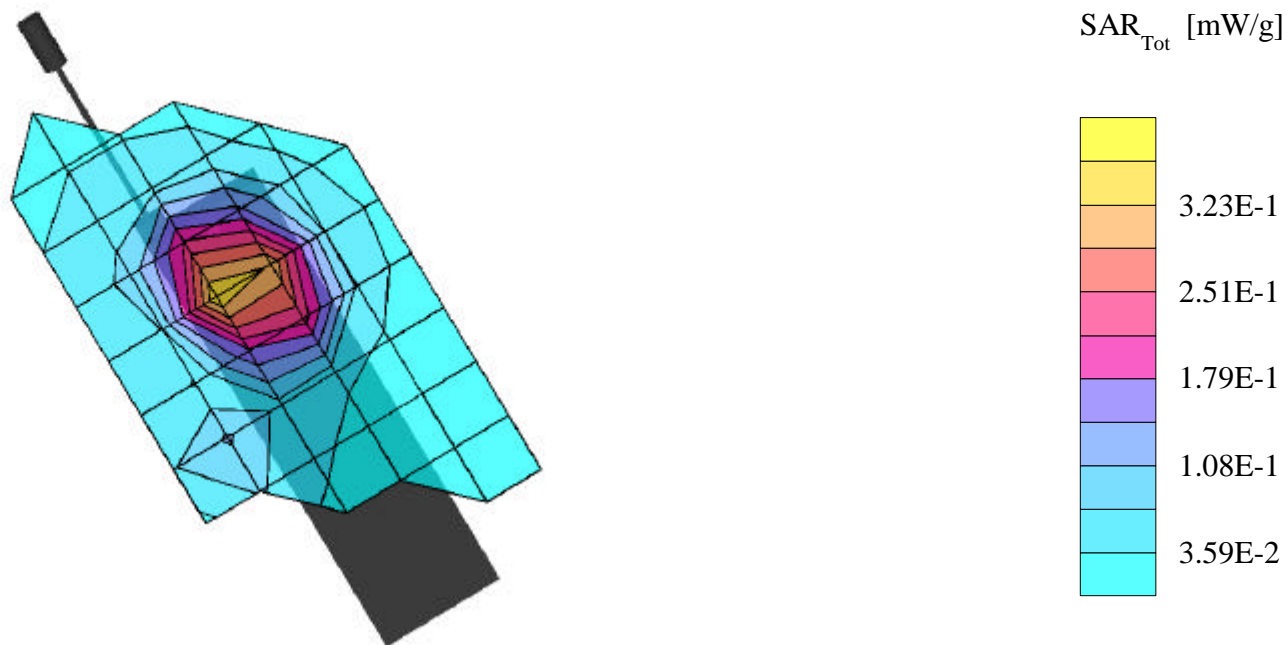
SAR (1g): 0.351 mW/g, SAR (10g): 0.222 mW/g

SANYO Tri Mode Phone Model:SCP-8100; FCC ID:AEZSCP-81H

Standard Battery; Ambient Temp. = 19.9°C / Meas. Tissue Temp. = 18.5°C

PCS CDMA Mode , Ch.0600 [1880.00MHz; Conducted Power = 24.5dBm; Right Head, Ear/15° Tilt position

Test Date -- 02/24/2003 [FCC/OET Bulletin 65 - Supplement C, July 2001]



SANYO FCC ID: AEZSCP-81H -- 1900MHz. Head SAR

SAM Phantom; Left Hand Section; Probe:ET3DV6 - SN1677; ConvF(5.30,5.30,5.30)

Med. Parameters 1900 MHz Brain: $\sigma = 1.40$ mho/m $\epsilon_r = 39.5$ $\rho = 1.00$ g/cm³; Antenna Position -- Out; Crest Factor 1.0

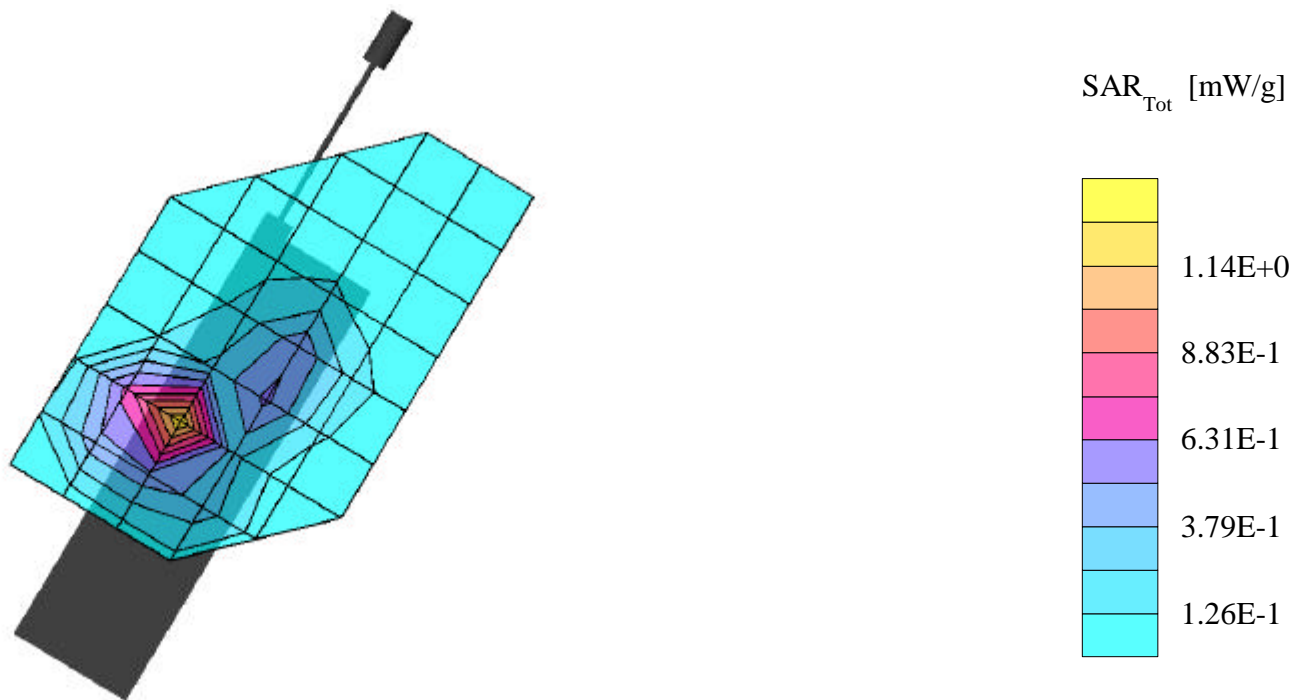
SAR (1g): 1.34 mW/g, SAR (10g): 0.682 mW/g

SANYO Tri Mode Phone Model:SPC-8100; FCC ID:AEZSCP-81H

Standard Battery; Ambient Temp. = 19.4°C / Meas. Tissue Temp. = 18.7°C

PCS CDMA Mode, Ch.0025 [1851.25MHz]; Conducted Power = 24.5dBm; Left Head, Cheek/Touch position

Test Date -- 02/24/2003 [FCC/OET Bulletin 65 - Supplement C, July 2001]



SANYO FCC ID: AEZSCP-81H -- 1900MHz. Head SAR

SAM Phantom; Left Hand Section; Probe:ET3DV6 - SN1677; ConvF(5.30,5.30,5.30)

Med. Parameters 1900 MHz Brain: $\sigma = 1.40$ mho/m $\epsilon_r = 39.5$ $\rho = 1.00$ g/cm³; Antenna Position -- Out; Crest Factor 1.0

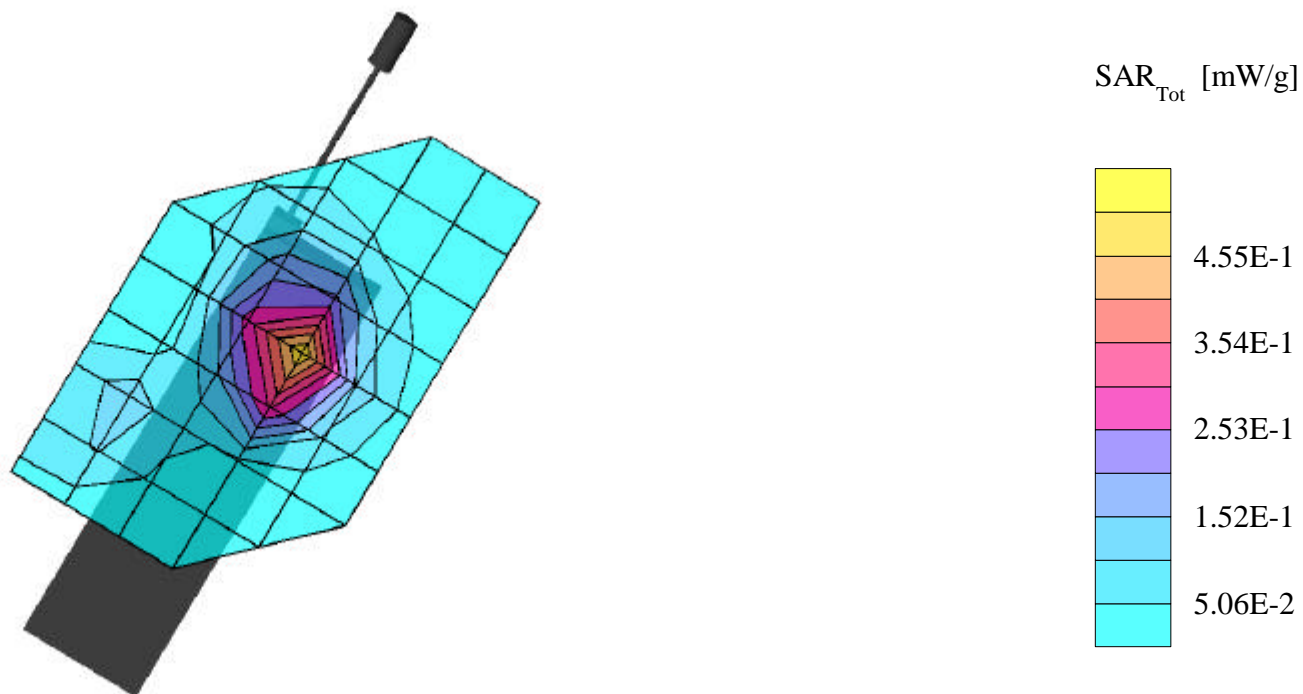
SAR (1g): 0.482 mW/g, SAR (10g): 0.287 mW/g

SANYO Tri Mode Phone Model:SCP-8100; FCC ID:AEZSCP-81H

Standard Battery; Ambient Temp. = 19.9°C / Meas. Tissue Temp. = 18.5°C

PCS CDMA Mode , Ch.0600 [1880.00MHz; Conducted Power = 24.5dBm; Left Head, Ear/15° Tilt position

Test Date -- 02/24/2003 [FCC/OET Bulletin 65 - Supplement C, July 2001]



SANYO FCC ID: AEZSCP-81H -- 835MHz.Body SAR

SAM Phantom; Flat Section; Probe:ET3DV6 - SN1677; ConvF(6.40,6.40,6.40)

Med. Parameters 835 MHz Muscle: $\sigma = 0.98$ mho/m $\epsilon_r = 53.1$ $\rho = 1.00$ g/cm³; Antenna Position -- Out; Crest Factor 1.0

SAR (1g): 0.787 mW/g, SAR (10g): 0.529 mW/g

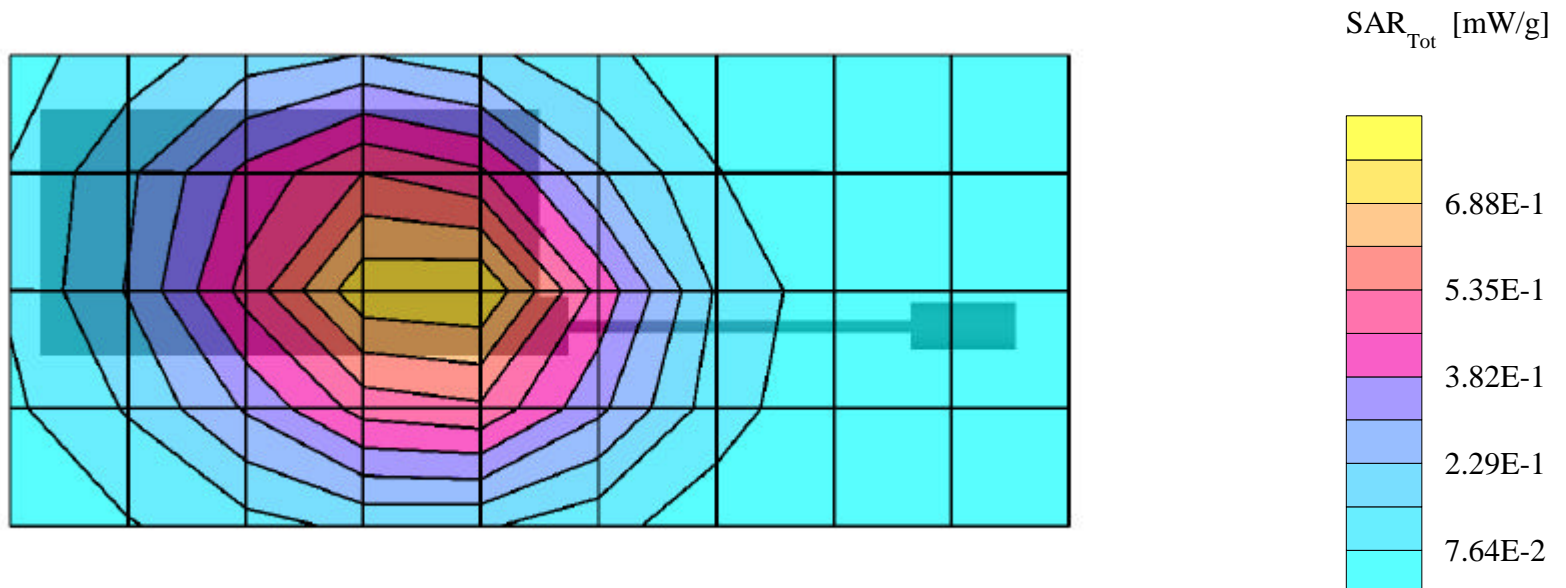
SANYO Tri Mode Phone Model:SCP-8100; FCC ID:AEZSCP-81H

Standard Battery; Ambient Temp. = 21.7°C / Meas. Tissue Temp. = 18.6°C

AMPS Mode, Ch.0383 [836.49MHz]; Conducted Power = 23.9dBm; 1.8cm from back (antenna side) of EUT to flat phantom, No Belt

Clip/No Holster

Test Date -- 02/24/2003 [FCC/OET Bulletin 65 - Supplement C, July 2001]



SANYO FCC ID: AEZSCP-81H -- 835MHz.Body SAR

SAM Phantom; Flat Section; Probe:ET3DV6 - SN1677; ConvF(6.40,6.40,6.40)

Med. Parameters 835 MHz Muscle: $\sigma = 0.98$ mho/m $\epsilon_r = 53.1$ $\rho = 1.00$ g/cm³; Antenna Position -- Out; Crest Factor 1.0

SAR (1g): 0.762 mW/g, SAR (10g): 0.510 mW/g

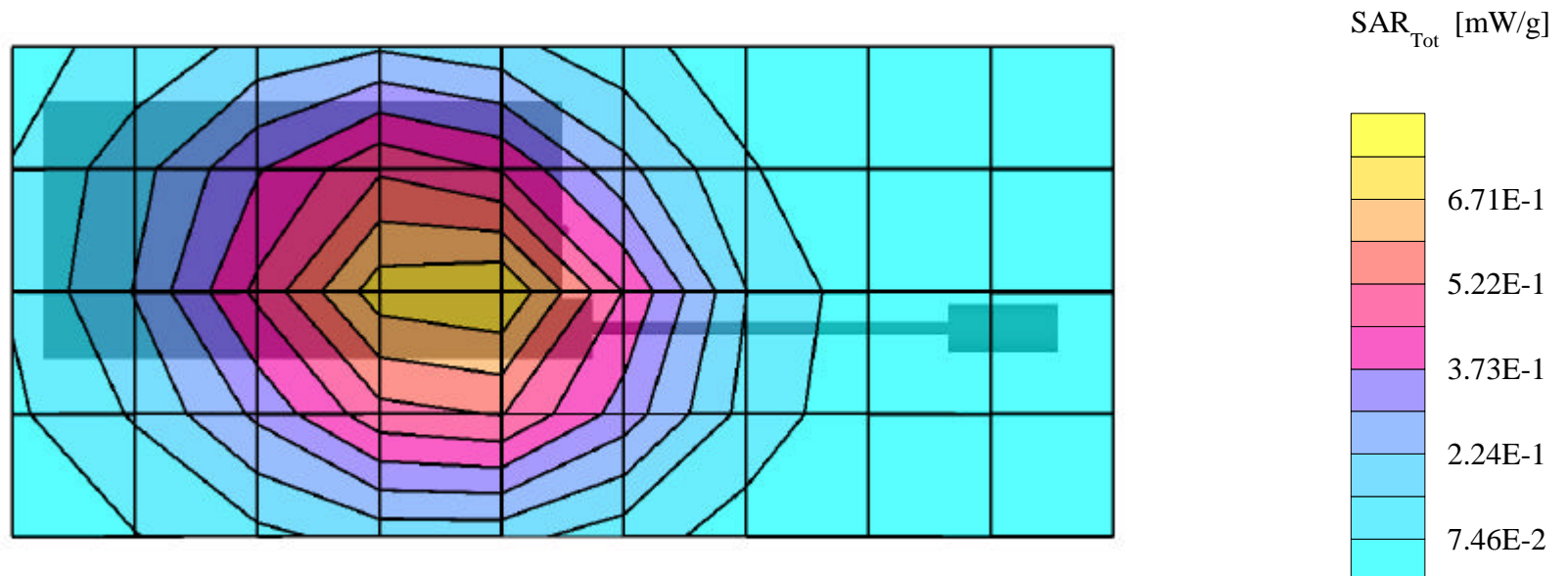
SANYO Tri Mode Phone Model:SCP-8100; FCC ID:AEZSCP-81H

Standard Battery; Ambient Temp. = 18.3°C / Meas. Tissue Temp. = 18.2°C

Cellular CDMA Mode, Ch.0383 [836.49MHz]; Conducted Power = 23.9dBm; 1.8cm from back (antenna side) of EUT to flat phantom, No

Belt Clip/No Holster

Test Date -- 02/24/2003 [FCC/OET Bulletin 65 - Supplement C, July 2001]



SANYO FCC ID: AEZSCP-81H -- 1900MHz.Body SAR

SAM Phantom; Flat Section; Probe:ET3DV6 - SN1677; ConvF(4.90,4.90,4.90)

Med. Parameters 1900 MHz Muscle: $\sigma = 1.50$ mho/m $\epsilon_r = 52.1$ $\rho = 1.00$ g/cm³; Antenna Position -- Out; Crest Factor 1.0

SAR (1g): 1.33 mW/g, SAR (10g): 0.738 mW/g

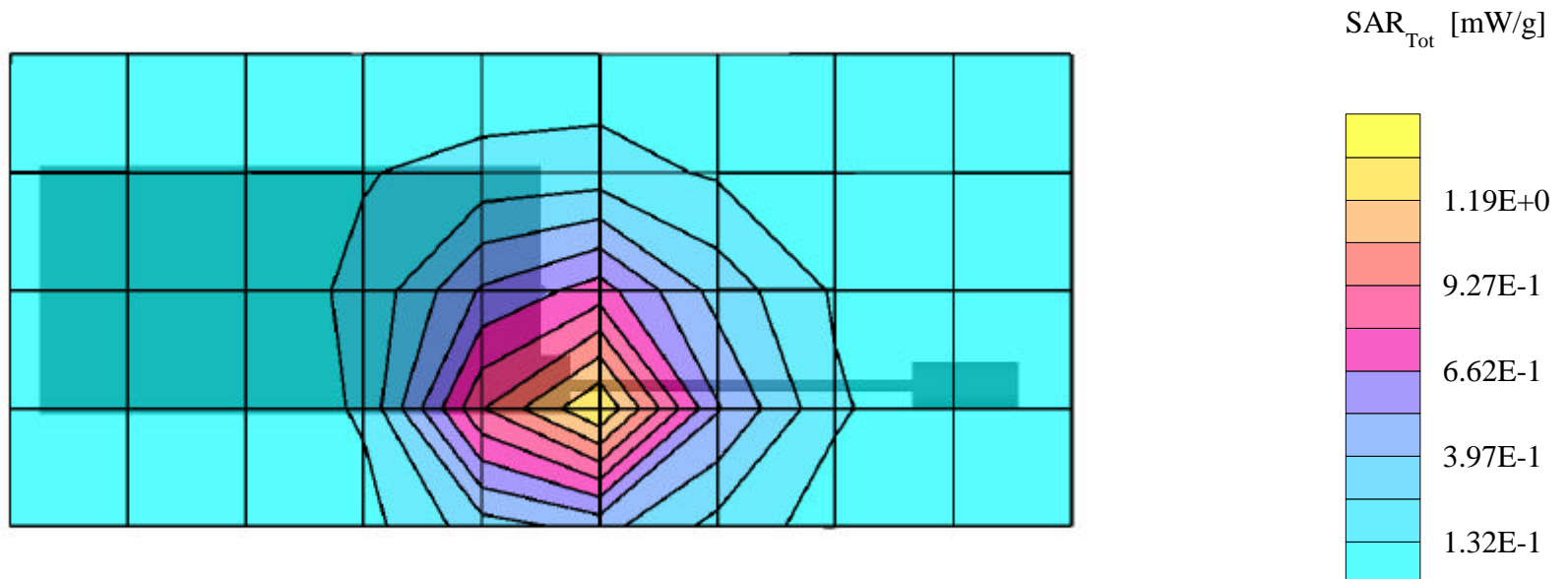
SANYO Tri Mode Phone Model:SCP-8100; FCC ID:AEZSCP-81H

Standard Battery; Ambient Temp. = 19.1°C / Meas. Tissue Temp. = 18.5°C

PCS CDMA Mode, Ch.0025 [1851.25MHz]; Conducted Power = 24.5dBm; 1.8cm from back (antenna side) of EUT to flat phantom, No

Belt Clip/No Holster

Test Date -- 02/24/2003 [FCC/OET Bulletin 65 - Supplement C, July 2001]



SANYO FCC ID: AEZSCP-81H -- 835MHz. Head SAR

SAM Phantom; Left Hand Section; Probe:ET3DV6 - SN1677; ConvF(6.70,6.70,6.70)

Med. Parameters 835 MHz Brain: $\sigma = 0.92$ mho/m $\epsilon_r = 40.6$ $\rho = 1.00$ g/cm³; Antenna Position -- Out; Crest Factor 1.0

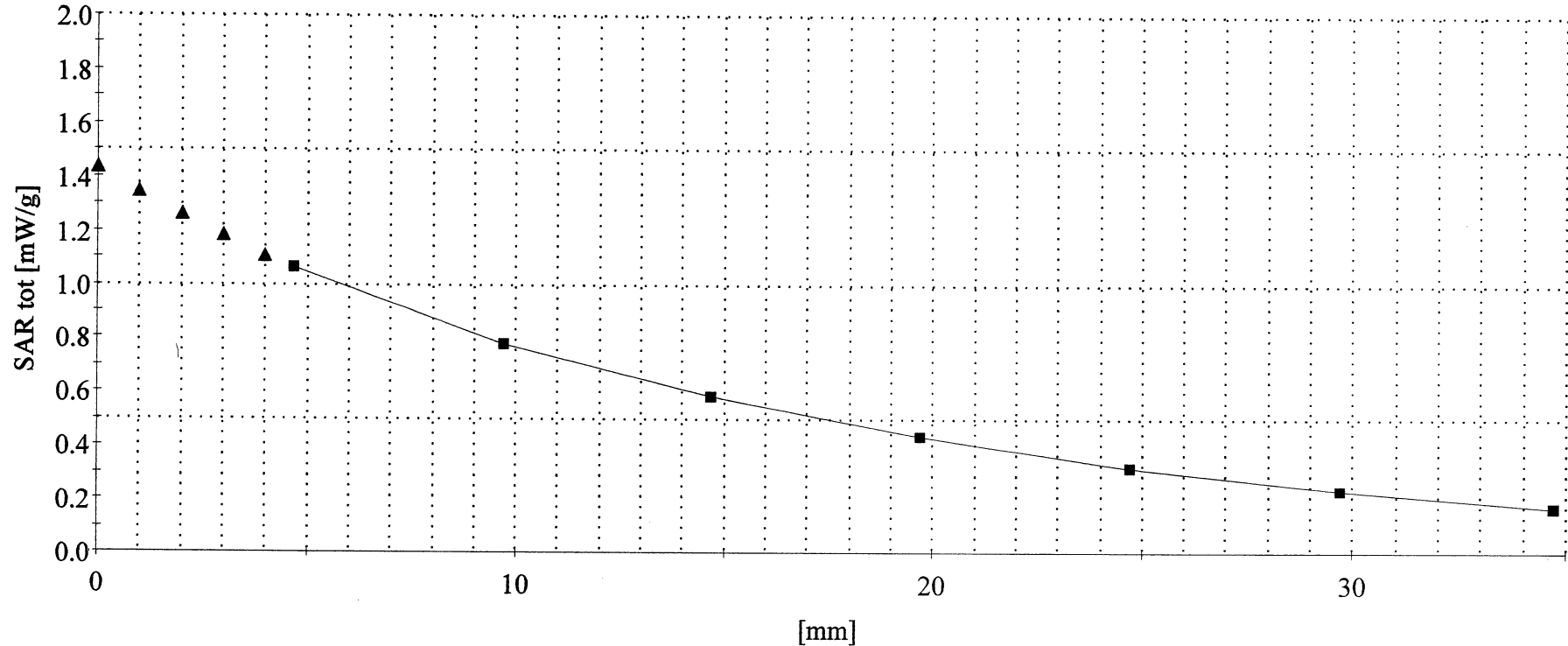
SAR (1g): 1.42 mW/g, SAR (10g): 0.881 mW/g

SANYO Tri Mode Phone Model:SCP-8100; FCC ID:AEZSCP-81H

Standard Battery; Ambient Temp. = 19.0°C / Meas. Tissue Temp. = 17.4°C

AMPS Mode, Ch.0383 [836.49MHz]; Conducted Power = 23.9dBm; Left Head, Cheek/Touch position

Test Date -- 02/24/2003 [FCC/OET Bulletin 65 - Supplement C, July 2001]



SANYO FCC ID: AEZSCP-81H -- 1900MHz. Head SAR

SAM Phantom; Left Hand Section; Probe:ET3DV6 - SN1677; ConvF(5.30,5.30,5.30)

Med. Parameters 1900 MHz Brain: $\sigma = 1.40$ mho/m $\epsilon_r = 39.5$ $\rho = 1.00$ g/cm³; Antenna Position -- Out; Crest Factor 1.0

SAR (1g): 1.34 mW/g, SAR (10g): 0.682 mW/g

SANYO Tri Mode Phone Model:SPC-8100; FCC ID:AEZSCP-81H

Standard Battery; Ambient Temp. = 19.4°C / Meas. Tissue Temp. = 18.7°C

PCS CDMA Mode, Ch.0025 [1851.25MHz]; Conducted Power = 24.5dBm; Left Head, Cheek/Touch position

Test Date -- 02/24/2003 [FCC/OET Bulletin 65 - Supplement C, July 2001]

