

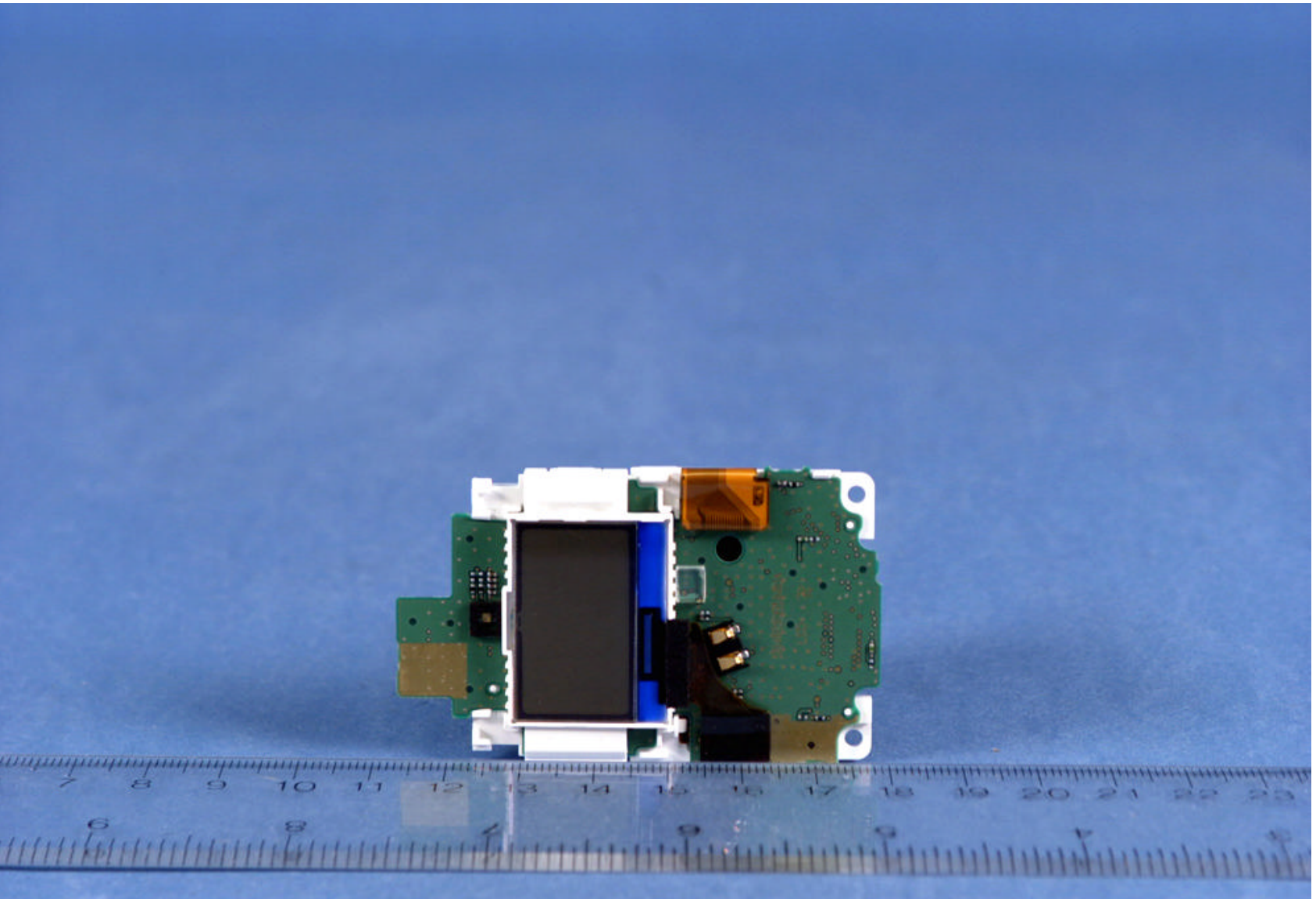
 PCTEST Computer Forensic Lab	SANYO FCC ID: AEZSCP-70H	EUT Photographs
© 2006 PCTEST Lab.	Tri-Mode Dual-Band Analog/ PCS Phone (AMPS/ CDMA)	Model: SCP-7000



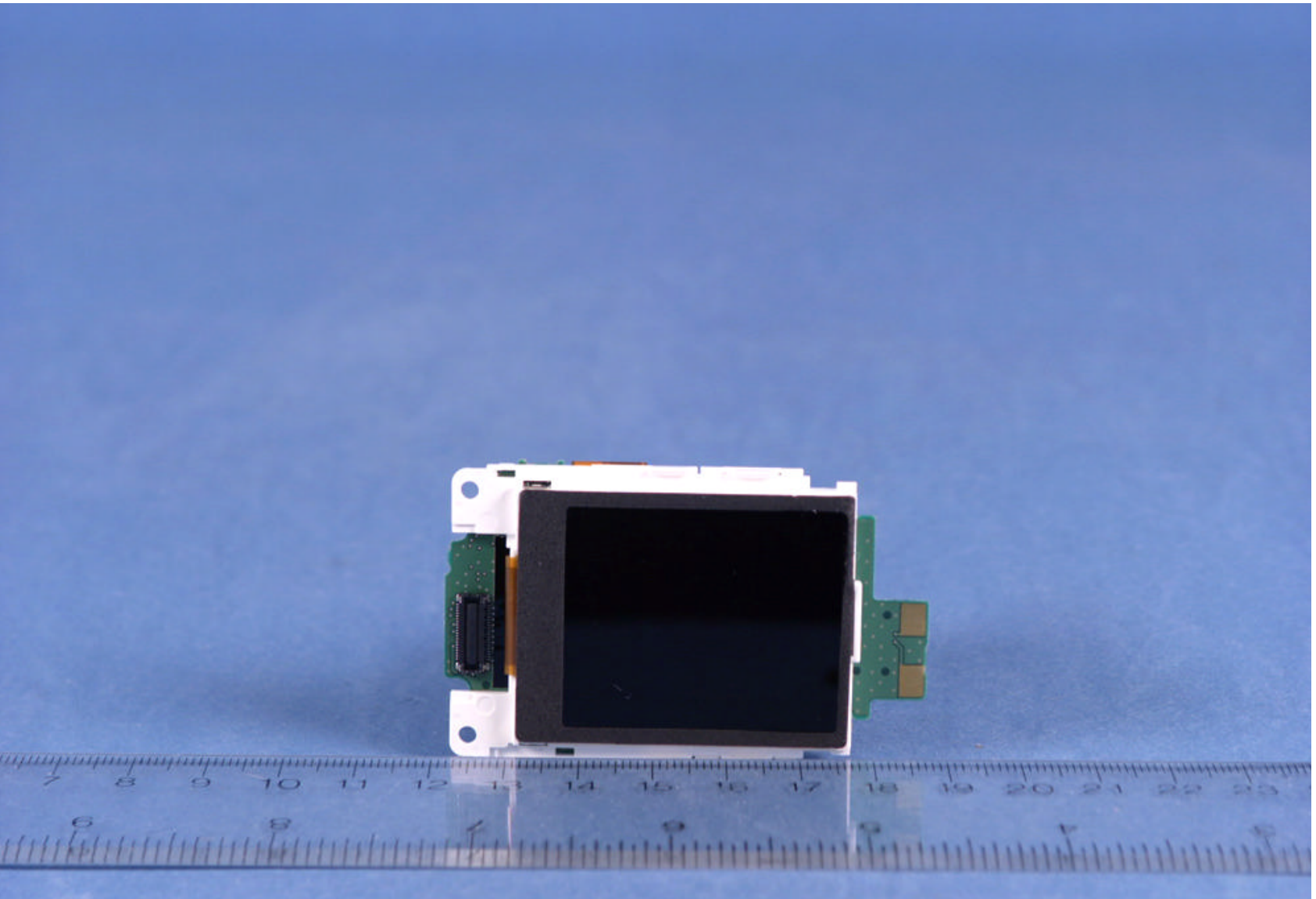
 PCTEST Computer Forensic Lab	SANYO FCC ID: AEZSCP-70H	EUT Photographs
© 2006 PCTEST Lab.	Tri-Mode Dual-Band Analog/ PCS Phone (AMPS/ CDMA)	Model: SCP-7000




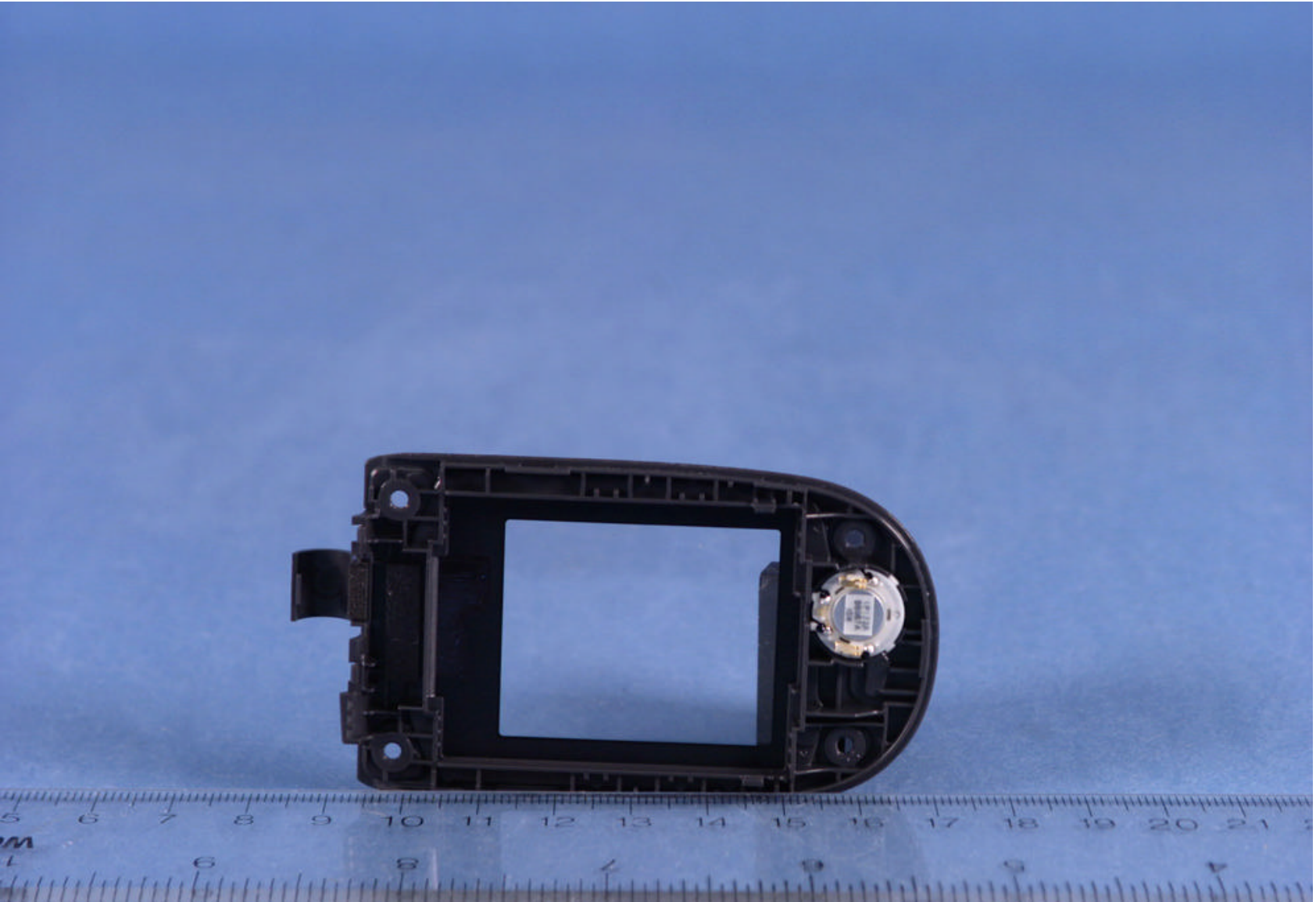
 PCTEST Computer Windows Lab	SANYO FCC ID: AEZSCP-70H	EUT Photographs
© 2006 PCTEST Lab.	Tri-Mode Dual-Band Analog/ PCS Phone (AMPS/ CDMA)	Model: SCP-7000



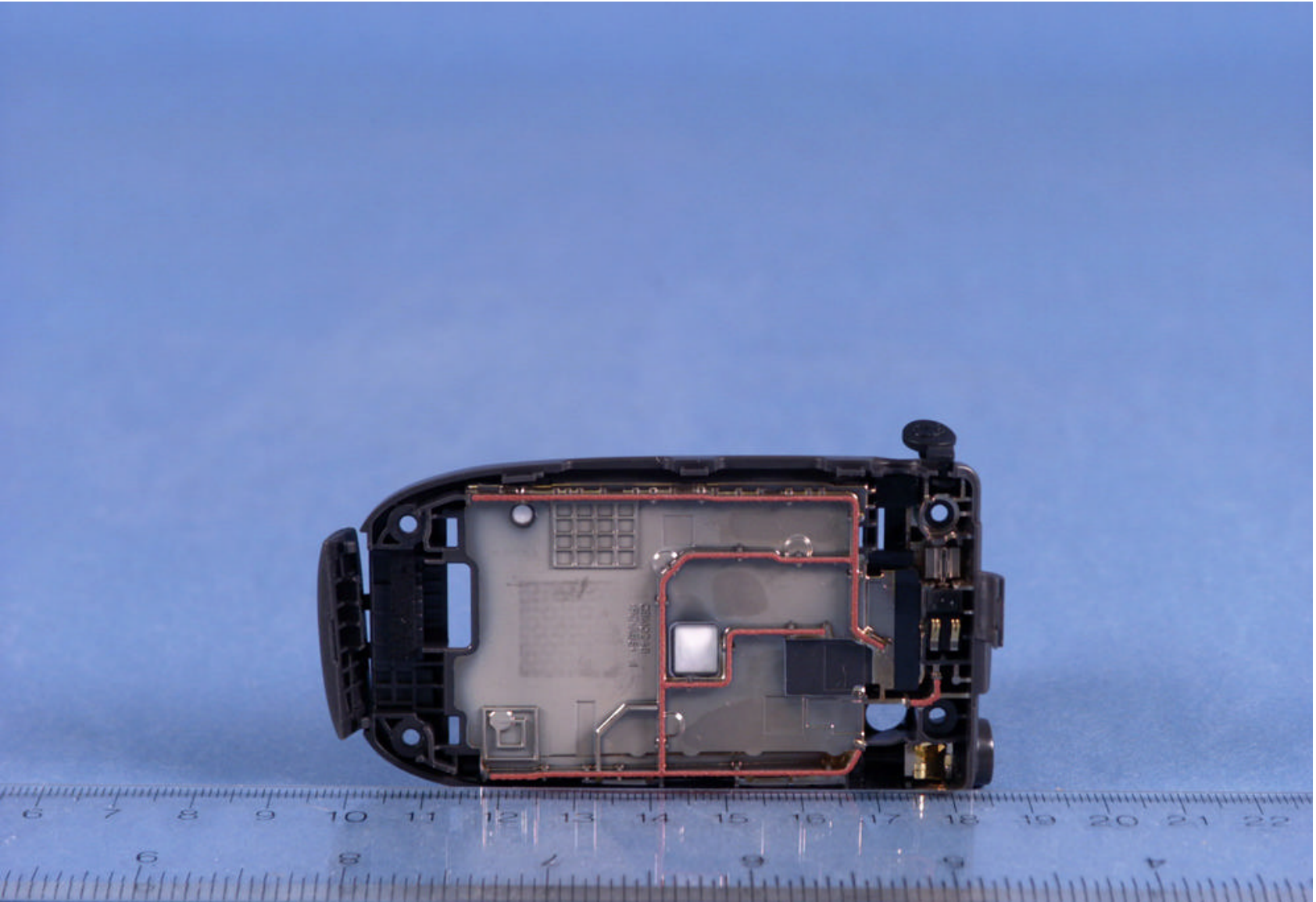
 PCTEST Computer Windows Lab	SANYO FCC ID: AEZSCP-70H	EUT Photographs
© 2006 PCTEST Lab.	Tri-Mode Dual-Band Analog/ PCS Phone (AMPS/ CDMA)	Model: SCP-7000




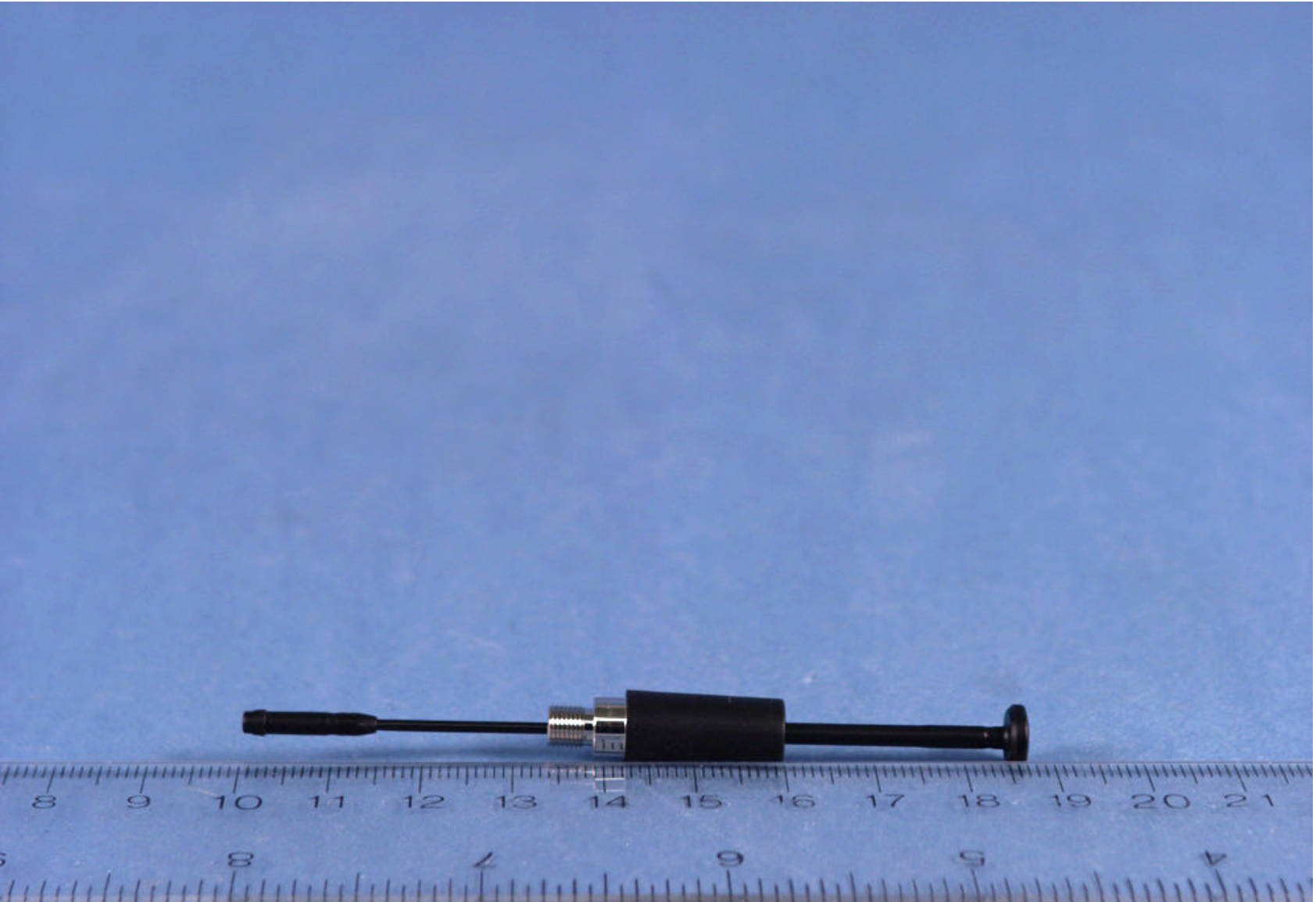
 PCTEST Computer Windows Lab	SANYO FCC ID : AEZSCP-70H	EUT Photographs
© 2006 PCTEST Lab.	Tri-Mode Dual-Band Analog/ PCS Phone (AMPS/ CDMA)	Model : SCP-7000



 PCTEST Computer Windows Lab	SANYO FCC ID: AEZSCP-70H	EUT Photographs
© 2006 PCTEST Lab.	Tri-Mode Dual-Band Analog/ PCS Phone (AMPS/ CDMA)	Model: SCP-7000



 PCTEST Computer Windows Lab	SANYO FCC ID: AEZSCP-70H	EUT Photographs
© 2006 PCTEST Lab.	Tri-Mode Dual-Band Analog/ PCS Phone (AMPS/ CDMA)	Model: SCP-7000



 PCTEST Competitive Wireless Lab	SANYO FCC ID: AEZSCP-70H	EUT Photographs
© 2006 PCTEST Lab.	Tri-Mode Dual-Band Analog/ PCS Phone (AMPS/ CDMA)	Model: SCP-7000