

ATTACHMENT Q – SAR TEST DATA

SANYO FCC ID:AEZSCP-6K -- PCS Head SAR

Generic Twin Phantom; Right Hand Section; Probe: ET3DV5 - SN1370 -- Probe Cal Date 02/00

Med. Parameters 1900 MHz Brain: $\sigma = 1.82$ mho/m $\epsilon_r = 40.4$ $\rho = 1.00$ g/cm³; Antenna Position -- In; Crest Factor 1.0

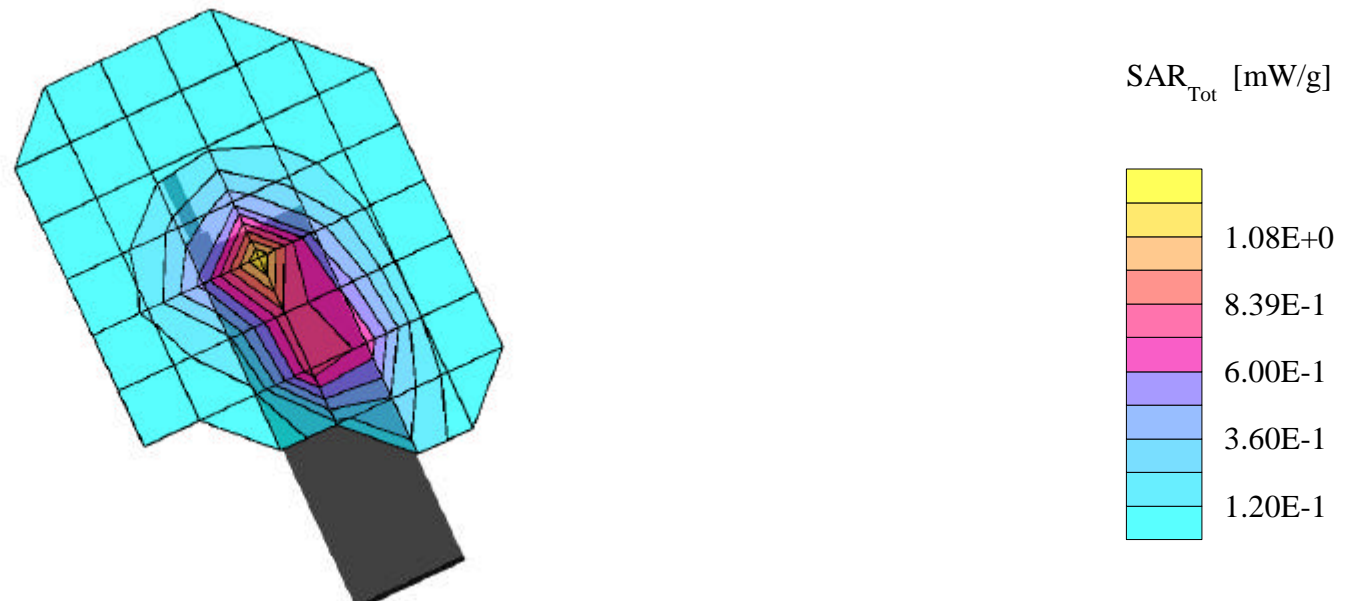
SAR (1g): 1.28 mW/g, SAR (10g): 0.653 mW/g

SANYO PCS Single-Band Model:SCP-6000

PCS Mode, Ch.0025 [1851.25MHz]

Conducted Power = 23.7dBm

Test Date -- 01-23-2001



SANYO FCC ID:AEZSCP-6K -- PCS Head SAR

Generic Twin Phantom; Right Hand Section; Probe: ET3DV5 - SN1370 -- Probe Cal Date 02/00

Med. Parameters 1900 MHz Brain: $\sigma = 1.82$ mho/m $\epsilon_r = 40.4$ $\rho = 1.00$ g/cm³; Antenna Position -- Out; Crest Factor 1.0

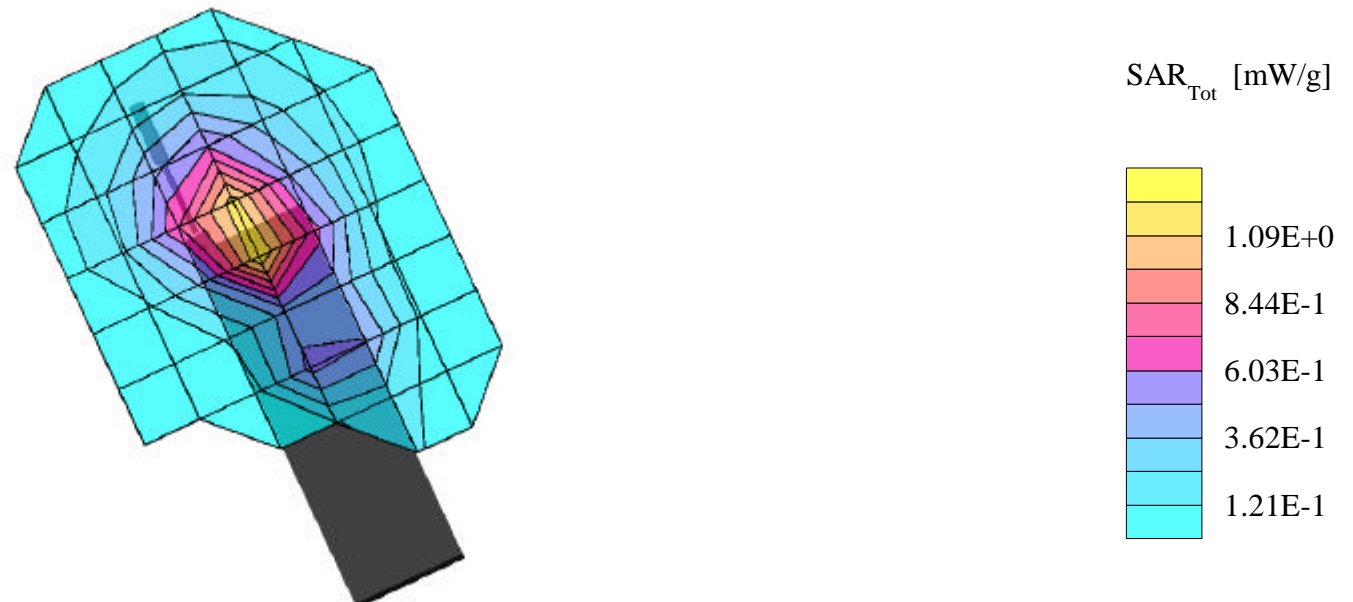
SAR (1g): 1.27 mW/g, SAR (10g): 0.681 mW/g

SANYO PCS Single-Band Model:SCP-6000

PCS Mode, Ch.0025 [1851.25MHz]

Conducted Power = 23.7dBm

Test Date -- 01-23-2001



SANYO FCC ID:AEZSCP-6K -- PCS Head SAR

Generic Twin Phantom; Right Hand Section; Probe: ET3DV5 - SN1370 -- Probe Cal Date 02/00

Med. Parameters 1900 MHz Brain: $\sigma = 1.82$ mho/m $\epsilon_r = 40.4$ $\rho = 1.00$ g/cm³; Antenna Position -- In; Crest Factor 1.0

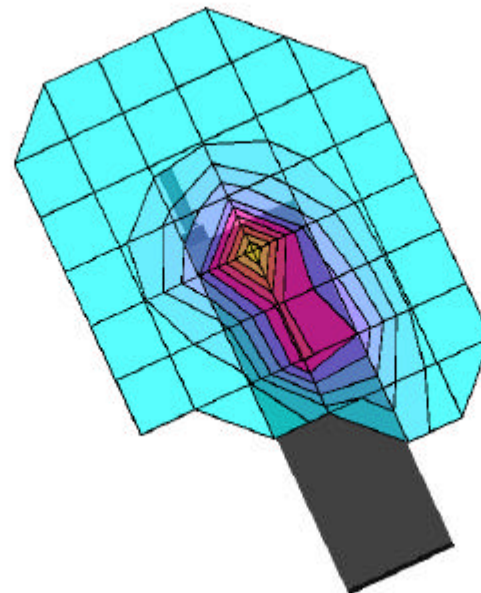
SAR (1g): 0.918 mW/g, SAR (10g): 0.472 mW/g

SANYO PCS Single-Band Model:SCP-6000

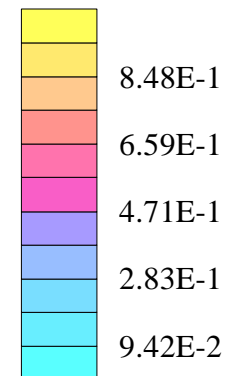
PCS Mode, Ch.0600 [1880.00MHz]

Conducted Power = 23.7dBm

Test Date -- 01-23-2001



SAR_{Tot} [mW/g]



SANYO FCC ID:AEZSCP-6K -- PCS Head SAR

Generic Twin Phantom; Right Hand Section; Probe: ET3DV5 - SN1370 -- Probe Cal Date 02/00

Med. Parameters 1900 MHz Brain: $\sigma = 1.82$ mho/m $\epsilon_r = 40.4$ $\rho = 1.00$ g/cm³; Antenna Position -- Out; Crest Factor 1.0

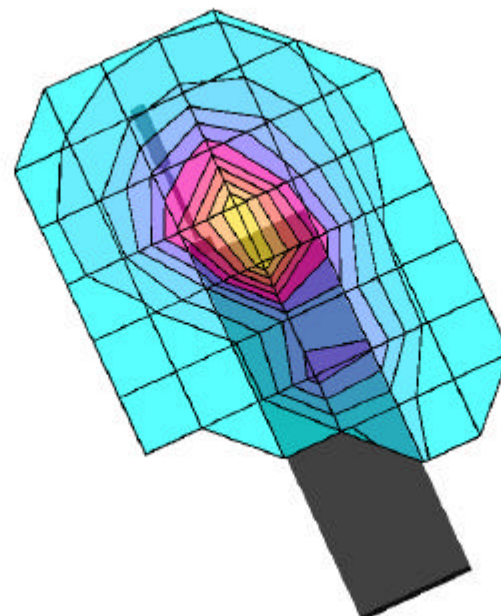
SAR (1g): 1.16 mW/g, SAR (10g): 0.636 mW/g

SANYO PCS Single-Band Model:SCP-6000

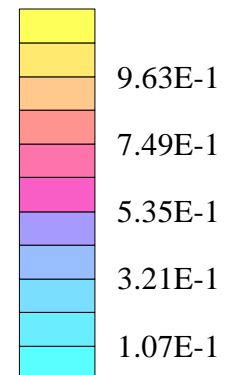
PCS Mode, Ch.0600 [1880.00MHz]

Conducted Power = 23.7dBm

Test Date -- 01-23-2001



SAR_{Tot} [mW/g]



SANYO FCC ID:AEZSCP-6K -- PCS Head SAR

Generic Twin Phantom; Right Hand Section; Probe: ET3DV5 - SN1370 -- Probe Cal Date 02/00

Med. Parameters 1900 MHz Brain: $\sigma = 1.82$ mho/m $\epsilon_r = 40.4$ $\rho = 1.00$ g/cm³; Antenna Position -- In; Crest Factor 1.0

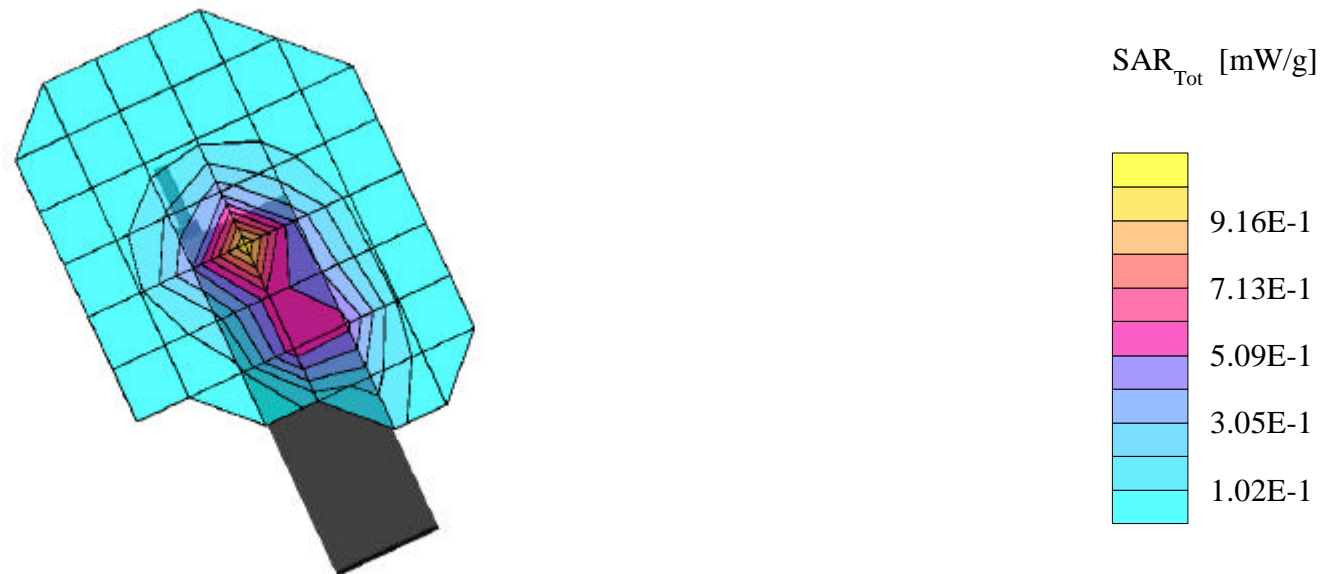
SAR (1g): 1.05 mW/g, SAR (10g): 0.522 mW/g

SANYO PCS Single-Band Model:SCP-6000

PCS Mode, Ch.1175 [1908.75MHz]

Conducted Power = 23.7dBm

Test Date -- 01-23-2001



SANYO FCC ID:AEZSCP-6K -- PCS Head SAR

Generic Twin Phantom; Right Hand Section; Probe: ET3DV5 - SN1370 -- Probe Cal Date 02/00

Med. Parameters 1900 MHz Brain: $\sigma = 1.82$ mho/m $\epsilon_r = 40.4$ $\rho = 1.00$ g/cm³; Antenna Position -- Out; Crest Factor 1.0

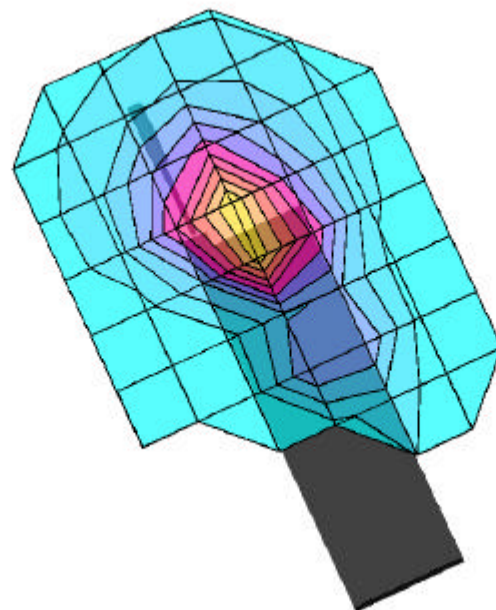
SAR (1g): 1.16 mW/g, SAR (10g): 0.618 mW/g

SANYO PCS Single-Band Model:SCP-6000

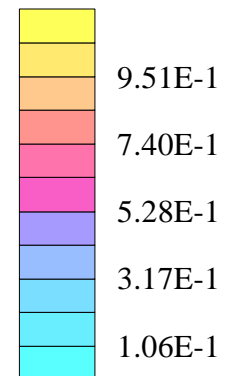
PCS Mode, Ch.1175 [1908.75MHz]

Conducted Power = 23.7dBm

Test Date -- 01-23-2001



SAR_{Tot} [mW/g]



SANYO FCC ID:AEZSCP-6K -- PCS Body SAR

Generic Twin Phantom; Flat Section; Probe: ET3DV5 - SN1370 -- Probe Cal Date 02/00

Med. Parameters 1900 MHz Muscle: $\sigma = 1.85$ mho/m $\epsilon_r = 54.2$ $\rho = 1.00$ g/cm³; Antenna Position -- In; Crest Factor 1.0

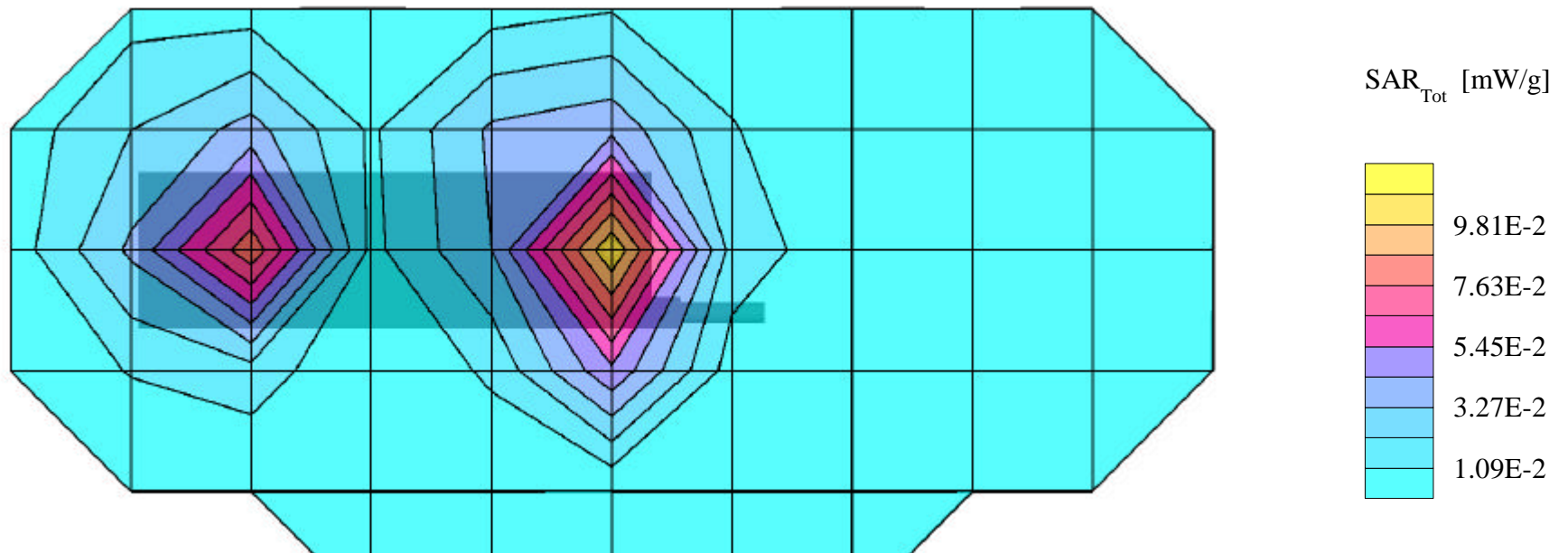
SAR (1g): 0.179 mW/g, SAR (10g): 0.0833 mW/g

SANYO PCS Single-Band Model:SCP-6000

PCS Mode, Ch.0025 [1851.25MHz]

Conducted Power = 23.7dBm; Spacing = 1.5cm from flat phantom to antenna, no beltclip or holster

Test Date -- 01-22-2001



SANYO FCC ID:AEZSCP-6K -- PCS Body SAR

Generic Twin Phantom; Flat Section; Probe: ET3DV5 - SN1370 -- Probe Cal Date 02/00

Med. Parameters 1900 MHz Muscle: $\sigma = 1.85$ mho/m $\epsilon_r = 54.2$ $\rho = 1.00$ g/cm³; Antenna Position -- Out; Crest Factor 1.0

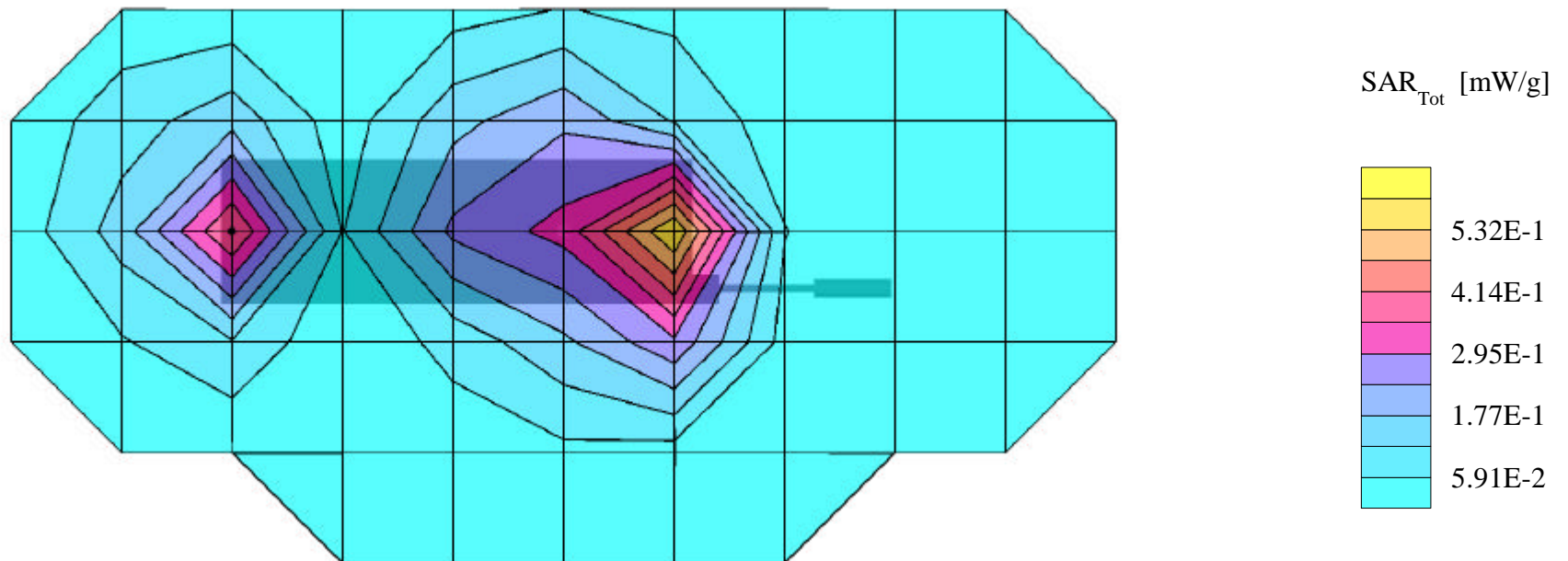
SAR (1g): 0.717 mW/g, SAR (10g): 0.406 mW/g

SANYO PCS Single-Band Model:SCP-6000

PCS Mode, Ch.0025 [1851.25MHz]

Conducted Power = 23.7dBm; Spacing = 1.5cm from flat phantom to antenna, no beltclip or holster

Test Date -- 01-22-2001



SANYO FCC ID:AEZSCP-6K -- PCS Body SAR

Generic Twin Phantom; Flat Section; Probe: ET3DV5 - SN1370 -- Probe Cal Date 02/00

Med. Parameters 1900 MHz Muscle: $\sigma = 1.85$ mho/m $\epsilon_r = 54.2$ $\rho = 1.00$ g/cm³; Antenna Position -- In; Crest Factor 1.0

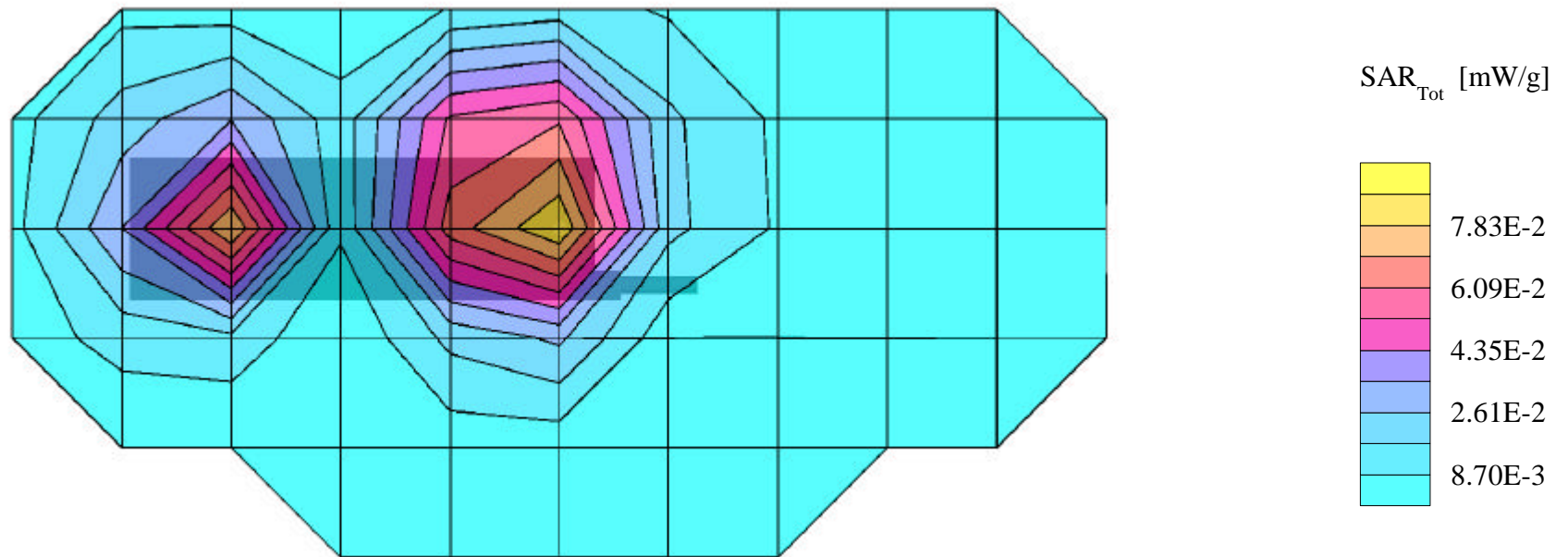
SAR (1g): 0.0987 mW/g, SAR (10g): 0.0608 mW/g

SANYO PCS Single-Band Model:SCP-6000

PCS Mode, Ch.0600 [1880.00MHz]

Conducted Power = 23.7dBm; Spacing = 1.5cm from flat phantom to antenna, no beltclip or holster

Test Date -- 01-22-2001



SANYO FCC ID:AEZSCP-6K -- PCS Body SAR

Generic Twin Phantom; Flat Section; Probe: ET3DV5 - SN1370 -- Probe Cal Date 02/00

Med. Parameters 1900 MHz Muscle: $\sigma = 1.85$ mho/m $\epsilon_r = 54.2$ $\rho = 1.00$ g/cm³; Antenna Position -- Out; Crest Factor 1.0

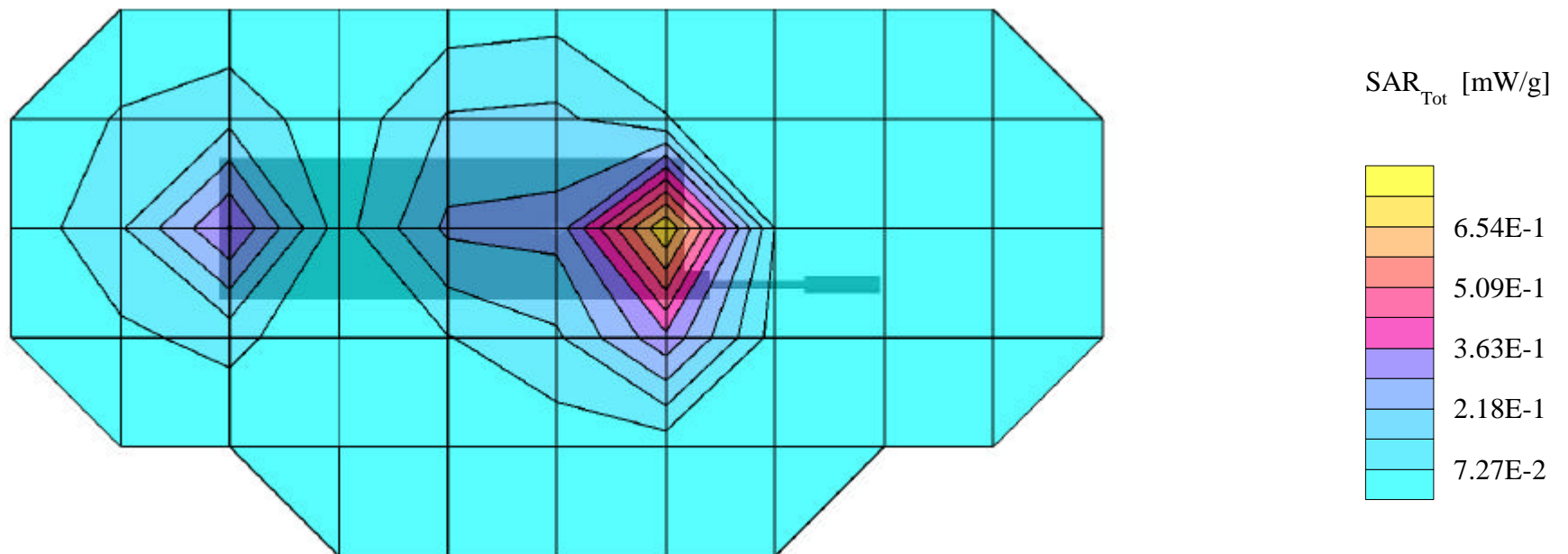
SAR (1g): 0.921 mW/g, SAR (10g): 0.508 mW/g

SANYO PCS Single-Band Model:SCP-6000

PCS Mode, Ch.0600 [1880.00MHz]

Conducted Power = 23.7dBm; Spacing = 1.5cm from flat phantom to antenna, no beltclip or holster

Test Date -- 01-22-2001



SANYO FCC ID:AEZSCP-6K -- PCS Body SAR

Generic Twin Phantom; Flat Section; Probe: ET3DV5 - SN1370 -- Probe Cal Date 02/00

Med. Parameters 1900 MHz Muscle: $\sigma = 1.85$ mho/m $\epsilon_r = 54.2$ $\rho = 1.00$ g/cm³; Antenna Position -- In; Crest Factor 1.0

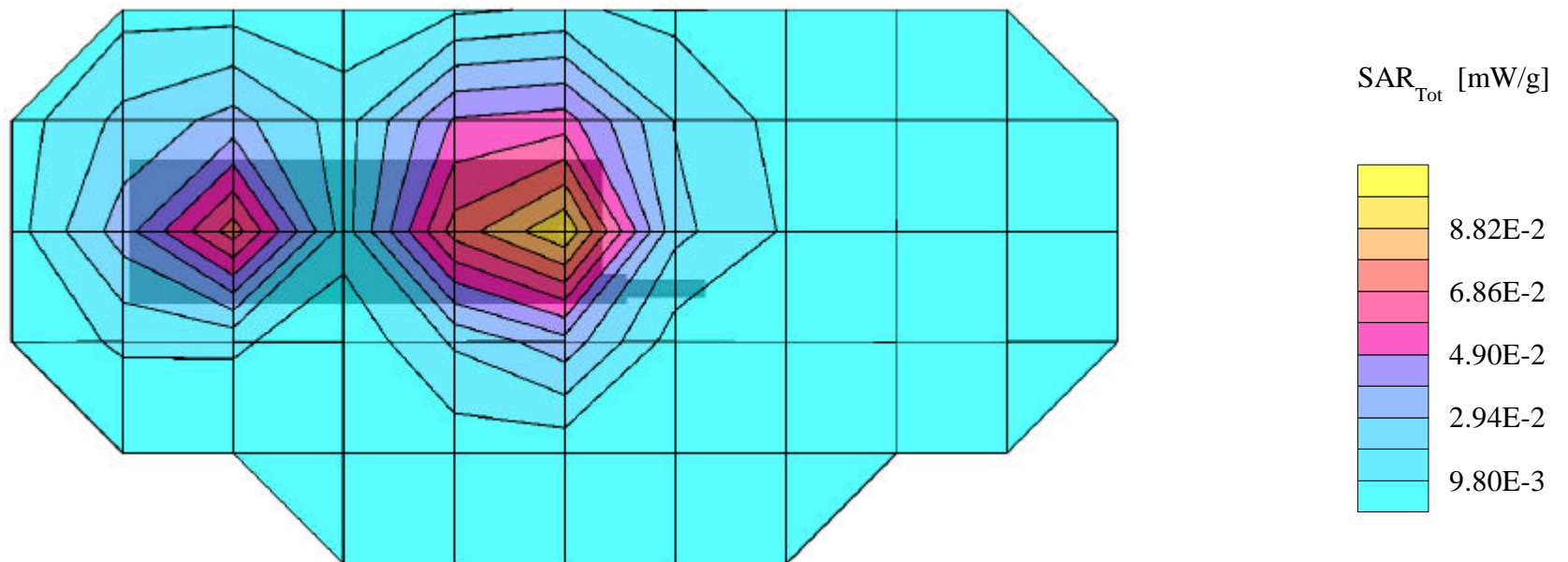
SAR (1g): 0.113 mW/g, SAR (10g): 0.0620 mW/g

SANYO PCS Single-Band Model:SCP-6000

PCS Mode, Ch.1175 [1908.75MHz]

Conducted Power = 23.7dBm; Spacing = 1.5cm from flat phantom to antenna, no beltclip or holster

Test Date -- 01-22-2001



SANYO FCC ID:AEZSCP-6K -- PCS Body SAR

Generic Twin Phantom; Flat Section; Probe: ET3DV5 - SN1370 -- Probe Cal Date 02/00

Med. Parameters 1900 MHz Muscle: $\sigma = 1.85$ mho/m $\epsilon_r = 54.2$ $\rho = 1.00$ g/cm³; Antenna Position -- Out; Crest Factor 1.0

SAR (1g): 1.05 mW/g, SAR (10g): 0.577 mW/g

SANYO PCS Single-Band Model:SCP-6000

PCS Mode, Ch.1175 [1908.75MHz]

Conducted Power = 23.7dBm; Spacing = 1.5cm from flat phantom to antenna, no beltclip or holster

Test Date -- 01-22-2001

