

File : c:/idx3/SYSTEM/SARMEAS3/data/Normal/02012914_ZOOM.VLT
Start : 29-Jan-102 03:46:18 pm End : 29-Jan-102 04:01:34 pm

Radio Type : Validation
Model Number :
Serial Number : C
Frequency : 1900 MHz
Peak Trans. Pwr : 0.250 W
Start Trans. Pwr : 0.250 W
Antenna Type : Dipole
Antenna Posn. : Internal
Phantom Type : Flat
Phantom Posn. : E Field
Scan Type : ZOOM/SAR
Probe Name : PCTEST
Field Type : E Field
Orientation : 0 Degrees

Mixture Type = Brain
Mixture Dielectric Constant = 40.400
Mixture Conductivity = 1.620

Comment :
1900 MHz Brain Validation
SN: C

Robot : PCTEST

Probe Offset = 0.20 cm
Sensor Factor = 0.0108
Conversion Factor = 0.550

PCTEST Amplifier Channel Settings : 0.309 0.361 0.421

Max Location : X = 1.750, Y = -2.000, Z = 0.000 (cm) Value = 265.452

Measured Values (volts) =
2.439E-001 1.418E-001 9.500E-002 6.119E-002 4.488E-002 3.028E-002
2.141E-002 1.482E-002 1.059E-002 7.997E-003 6.023E-003 4.263E-003
3.083E-003 3.224E-003 2.444E-003 1.628E-003 1.172E-003 1.014E-003
1.043E-003 1.255E-003 1.262E-003

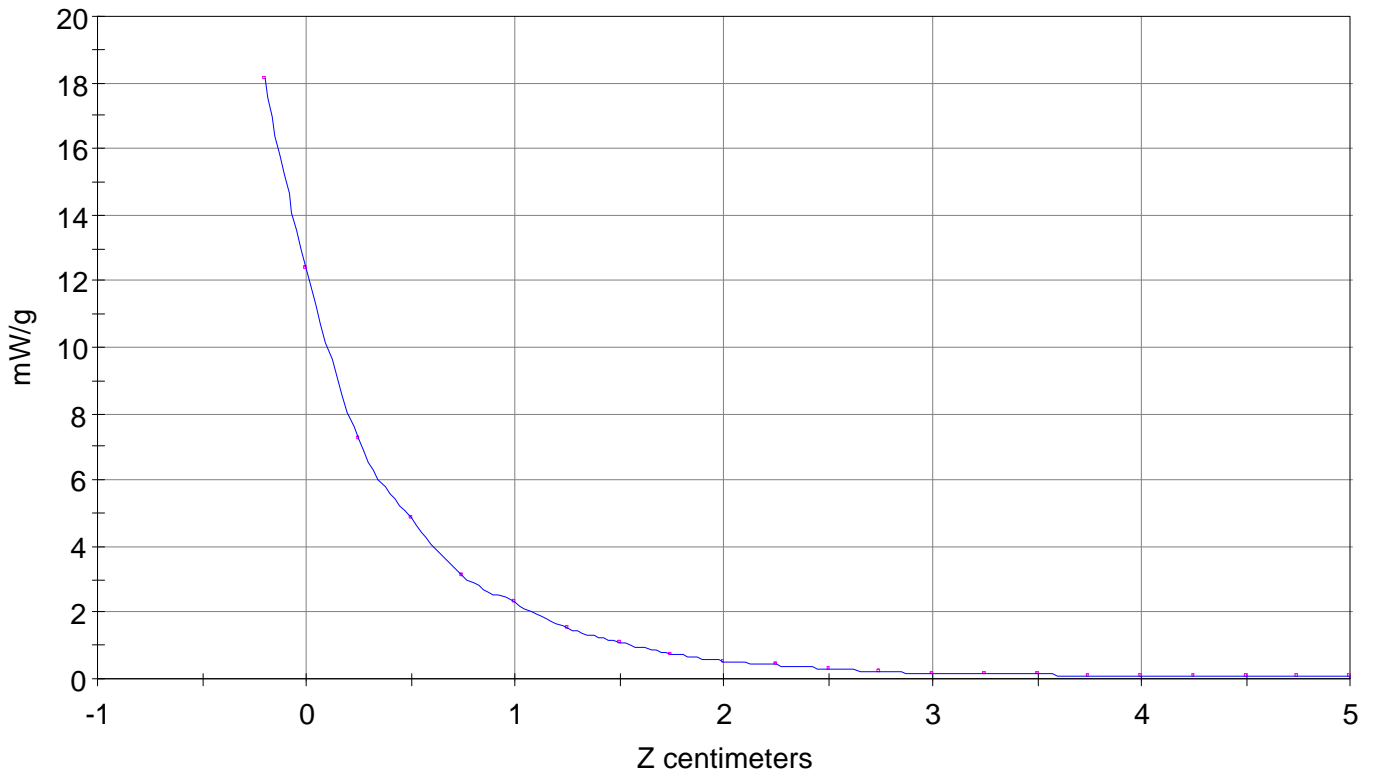
Calc. Voltage @ Surface (Vs) = 0.3564

Voltage @ 1.00 cm (Vt) = 0.0579

Ave. Voltage (Vs+Vt)/2 = 0.2072

Ave. SAR over 1 g (mW/g) = 10.5493

SAR Scan
File : 02012914_ZOOM
Start : 29-Jan-102 03:46:18 pm End : 29-Jan-102 04:01:34 pm
Validation//C;1900MHz;W;Dipole/Internal;
Flat/E Field;ZOOM/SAR;PCTEST/E Field/0 DegreesBrain/40.400/1.620

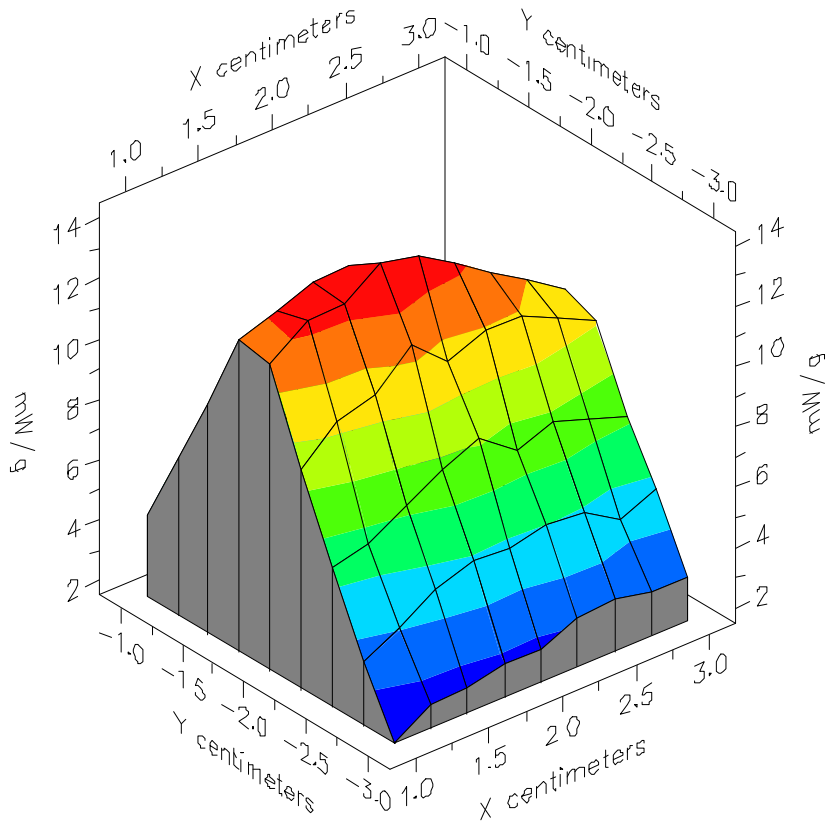


File : 02012914_ZOOM

Start : 29-Jan-102 03:46:18 pm End : 29-Jan-102 04:01:34 pm

Validation//C;1900MHz;W;Dipole/Internal;

Flat/E Field;ZOOM/SAR;PCTEST/E Field/0 DegreesBrain/40.400/1.620

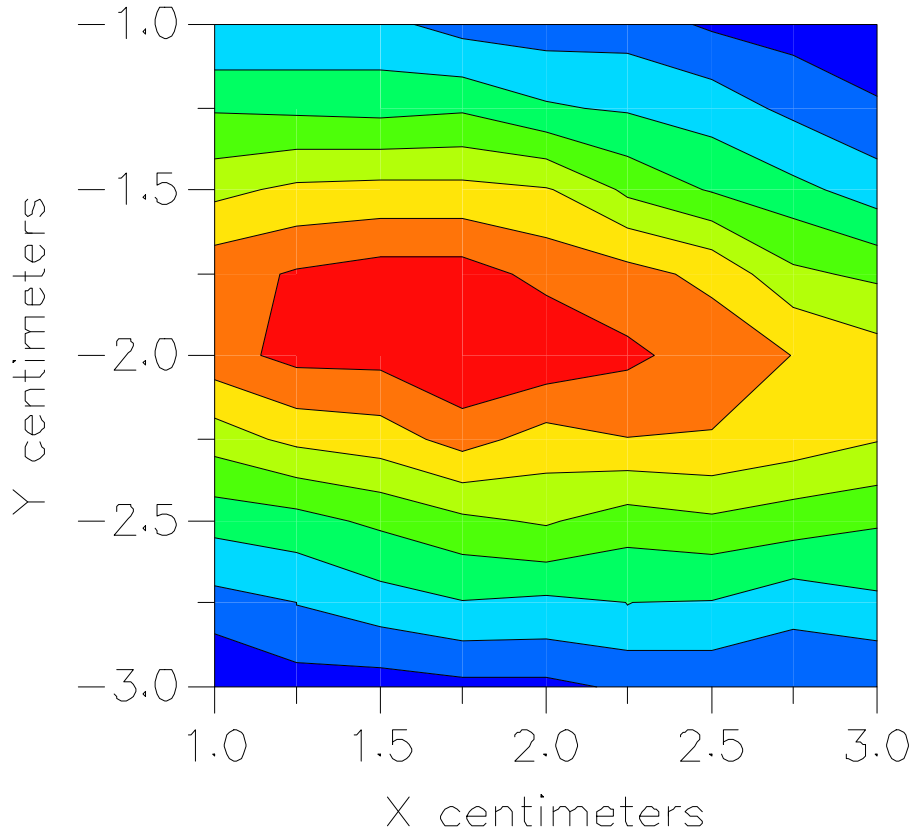


File : 02012914_ZOOM

Start : 29-Jan-102 03:46:18 pm End : 29-Jan-102 04:01:34 pm

Validation//C;1900MHz;W;Dipole/Internal;

Flat/E Field;ZOOM/SAR;PCTEST/E Field/0 DegreesBrain/40.400/1.620



File : c:/idx3/SYSTEM/SARMEAS3/data/Normal/02012926_ZOOM.VLT
Start : 29-Jan-102 05:57:03 pm End : 29-Jan-102 06:12:55 pm

Radio Type : Validation
Model Number :
Serial Number : C
Frequency : 835 MHz
Peak Trans. Pwr : 0.250 W
Start Trans. Pwr : 0.250 W
Antenna Type : Dipole
Antenna Posn. : Internal
Phantom Type : Flat
Phantom Posn. : E Field
Scan Type : ZOOM/SAR
Probe Name : PCTEST
Field Type : E Field
Orientation : 0 Degrees

Mixture Type = Brain
Mixture Dielectric Constant = 41.500
Mixture Conductivity = 0.900

Comment :
835 MHz Brain Validation
SN: C

Robot : PCTEST

Probe Offset = 0.20 cm
Sensor Factor = 0.0108
Conversion Factor = 0.325

PCTEST Amplifier Channel Settings : 0.239 0.278 0.294

Max Location : X = 1.250, Y = -2.250, Z = 0.000 (cm) Value = 101.253

Measured Values (volts) =
9.975E-002 7.499E-002 6.126E-002 5.159E-002 4.321E-002 3.764E-002
3.264E-002 2.797E-002 2.391E-002 2.107E-002 1.924E-002 1.651E-002
1.477E-002 1.300E-002 1.135E-002 9.757E-003 8.477E-003 7.363E-003
7.077E-003 6.347E-003 5.514E-003

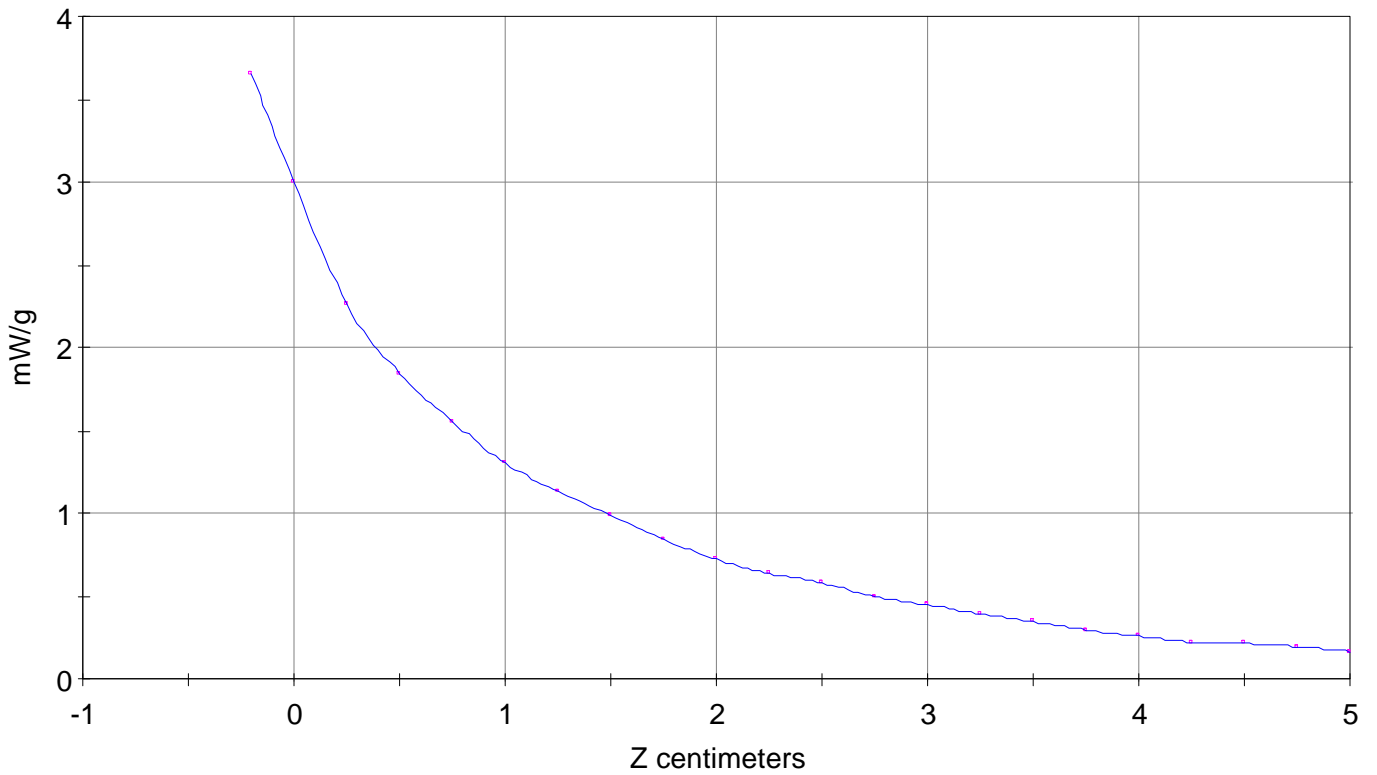
Calc. Voltage @ Surface (Vs) = 0.1213

Voltage @ 1.00 cm (Vt) = 0.0499

Ave. Voltage (Vs+Vt)/2 = 0.0856

Ave. SAR over 1 g (mW/g) = 2.5764

SAR Scan
File : 02012926_ZOOM
Start : 29-Jan-102 05:57:03 pm End : 29-Jan-102 06:12:55 pm
Validation//C;835MHz;W;Dipole/Internal;
Flat/E Field;ZOOM/SAR;PCTEST/E Field/0 DegreesBrain/41.500/0.900

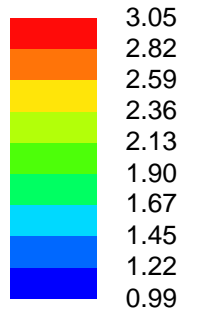
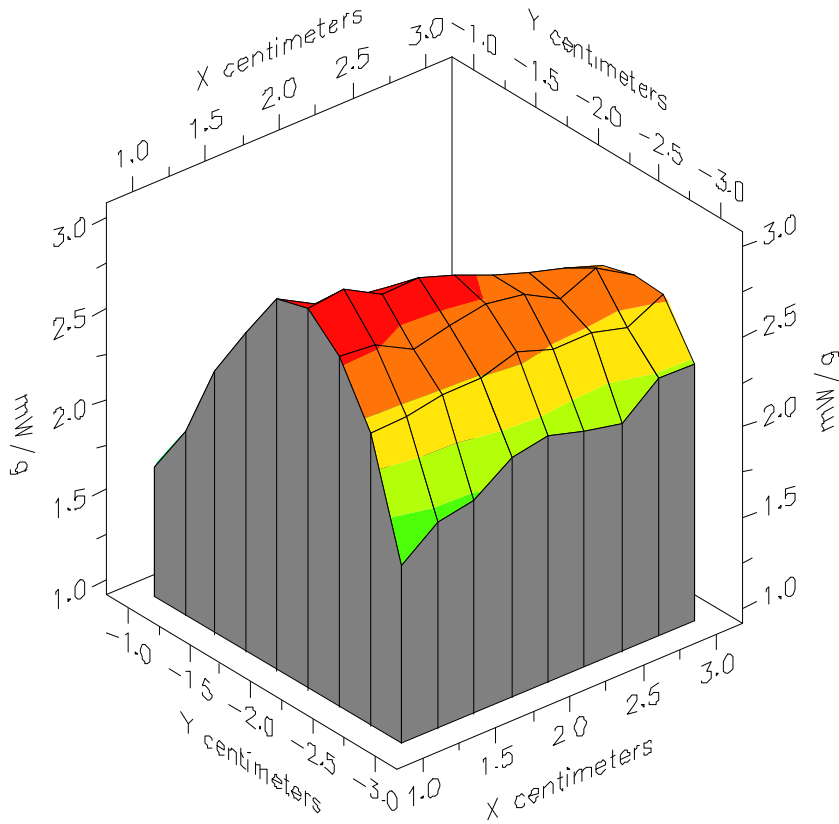


File : 02012926_ZOOM

Start : 29-Jan-102 05:57:03 pm End : 29-Jan-102 06:12:55 pm

Validation//C;835MHz;W;Dipole/Internal;

Flat/E Field;ZOOM/SAR;PCTEST/E Field/0 DegreesBrain/41.500/0.900

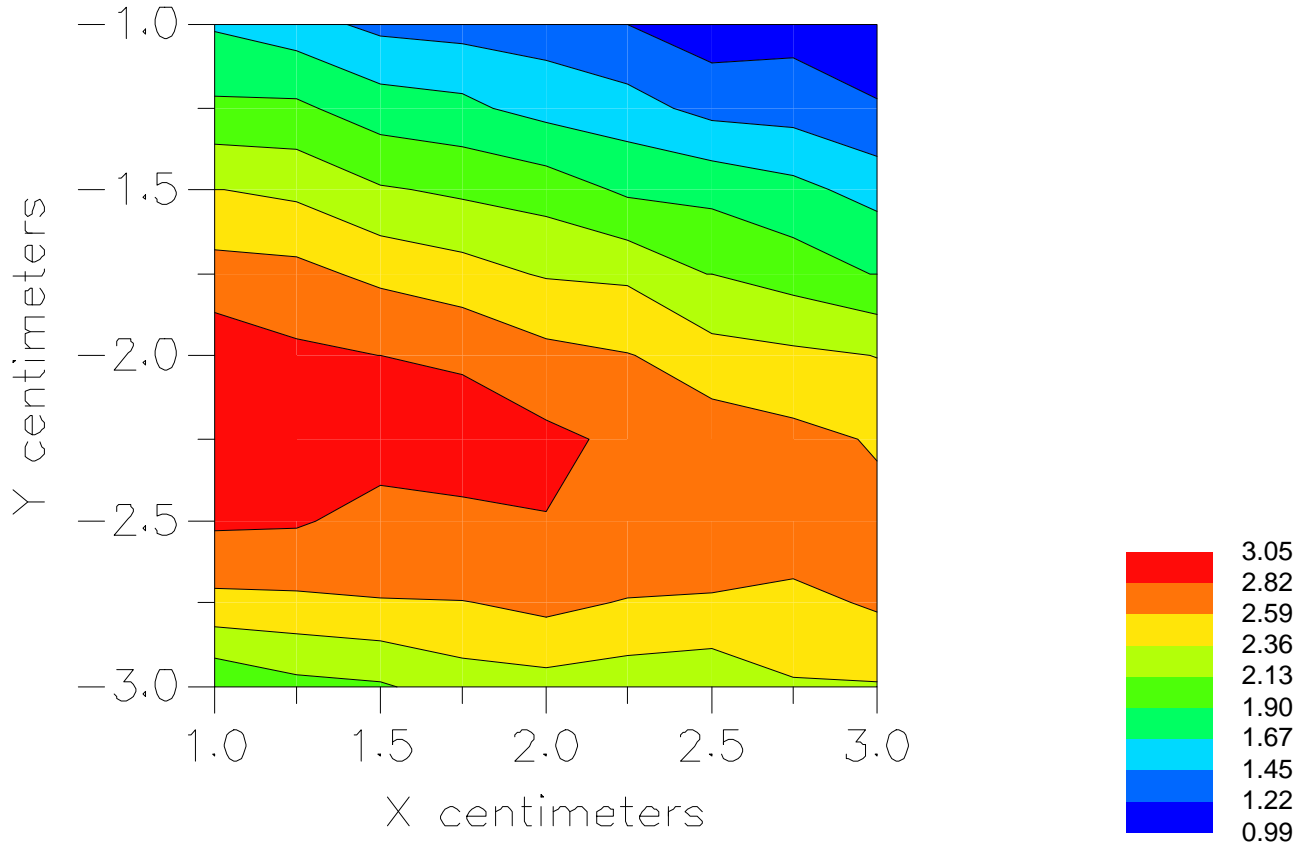


File : 02012926_ZOOM

Start : 29-Jan-102 05:57:03 pm End : 29-Jan-102 06:12:55 pm

Validation//C;835MHz;W;Dipole/Internal;

Flat/E Field;ZOOM/SAR;PCTEST/E Field/0 DegreesBrain/41.500/0.900



File : c:/idx3/SYSTEM/SARMEAS3/data/Normal/02013012_ZOOM.VLT
Start : 30-Jan-102 12:04:24 pm End : 30-Jan-102 12:20:12 pm

Radio Type : Validation
Model Number :
Serial Number : C
Frequency : 835 MHz
Peak Trans. Pwr : 0.250 W
Start Trans. Pwr : 0.250 W
Antenna Type : Dipole
Antenna Posn. : Internal
Phantom Type : Flat
Phantom Posn. : E Field
Scan Type : ZOOM/SAR
Probe Name : PCTEST
Field Type : E Field
Orientation : 0 Degrees

Mixture Type = Muscle
Mixture Dielectric Constant = 56.100
Mixture Conductivity = 0.950

Comment :
835 MHz Muscle Validation
SN: C

Robot : PCTEST

Probe Offset = 0.20 cm
Sensor Factor = 0.0108
Conversion Factor = 0.423

PCTEST Amplifier Channel Settings : 0.239 0.278 0.294

Max Location : X = 1.750, Y = -2.250, Z = 0.000 (cm) Value = 69.430

Measured Values (volts) =
6.830E-002 4.708E-002 3.652E-002 3.022E-002 2.413E-002 2.085E-002
1.758E-002 1.462E-002 1.271E-002 1.122E-002 9.528E-003 8.651E-003
7.324E-003 6.387E-003 5.426E-003 4.850E-003 4.358E-003 3.453E-003
3.234E-003 2.902E-003 2.458E-003

Calc. Voltage @ Surface (Vs) = 0.0879

Voltage @ 1.00 cm (Vt) = 0.0290

Ave. Voltage (Vs+Vt)/2 = 0.0584

Ave. SAR over 1 g (mW/g) = 2.2884

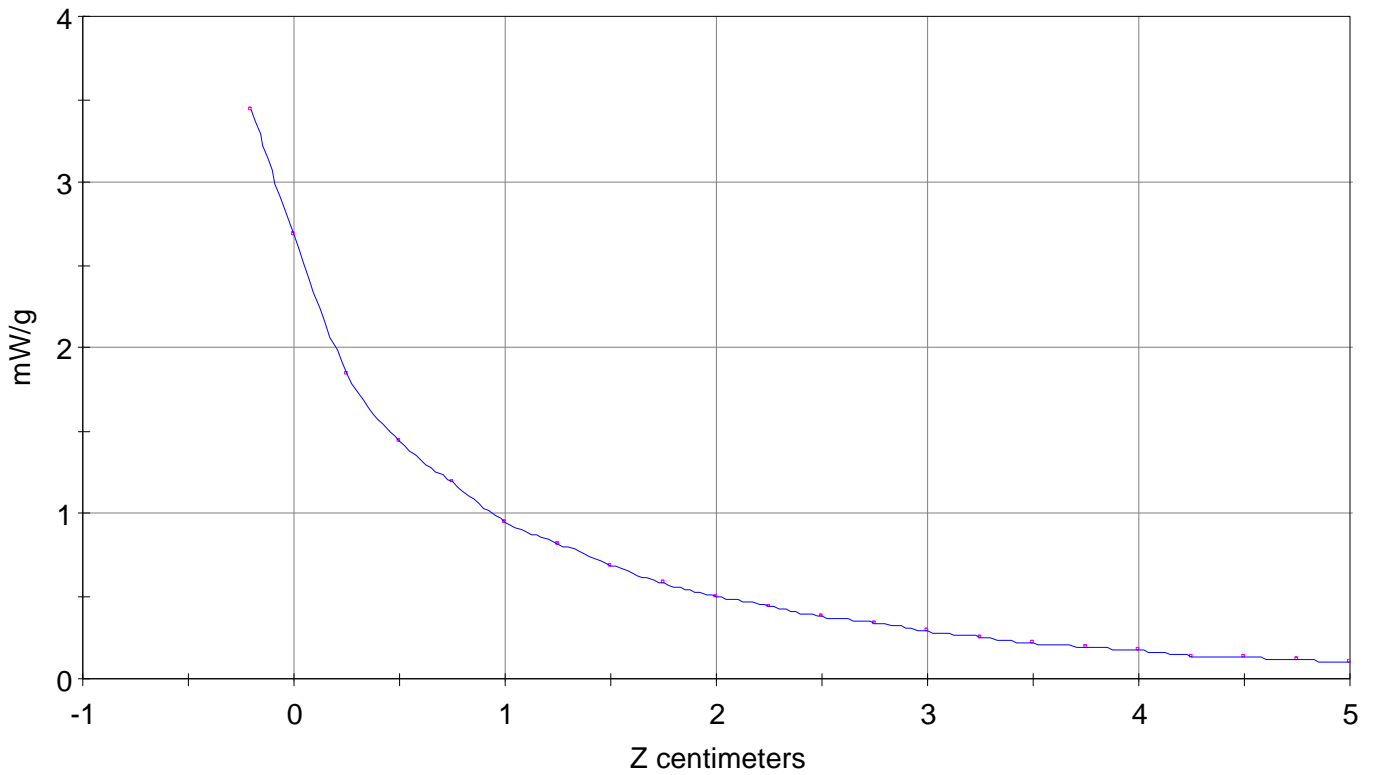
SAR Scan

File : 02013012_ZOOM

Start : 30-Jan-102 12:04:24 pm End : 30-Jan-102 12:20:12 pm

Validation//C;835MHz;W;Dipole/Internal;

Flat/E Field;ZOOM/SAR;PCTEST/E Field/0 DegreesMuscle/56.100/0.950

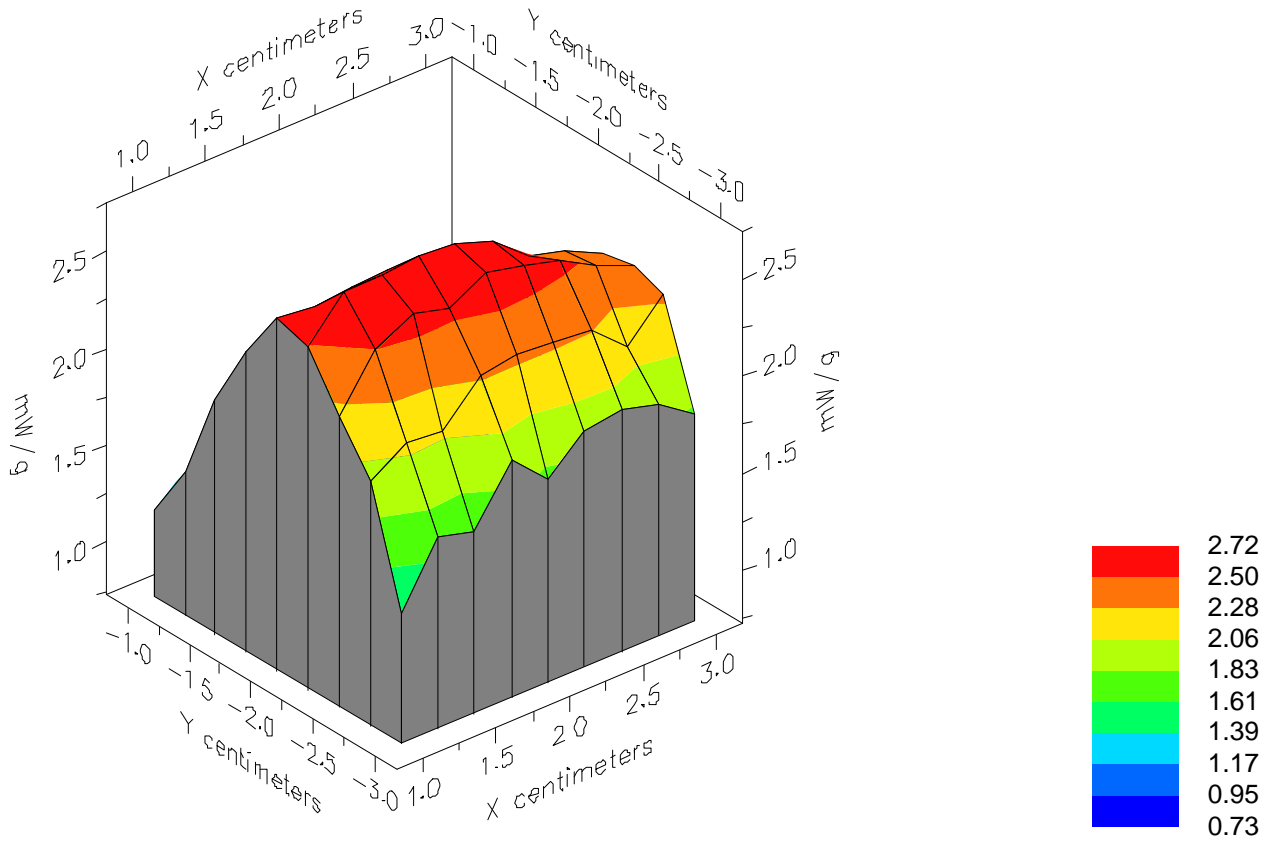


File : 02013012_ZOOM

Start : 30-Jan-102 12:04:24 pm End : 30-Jan-102 12:20:12 pm

Validation//C;835MHz;W;Dipole/Internal;

Flat/E Field;ZOOM/SAR;PCTEST/E Field/0 DegreesMuscle/56.100/0.950

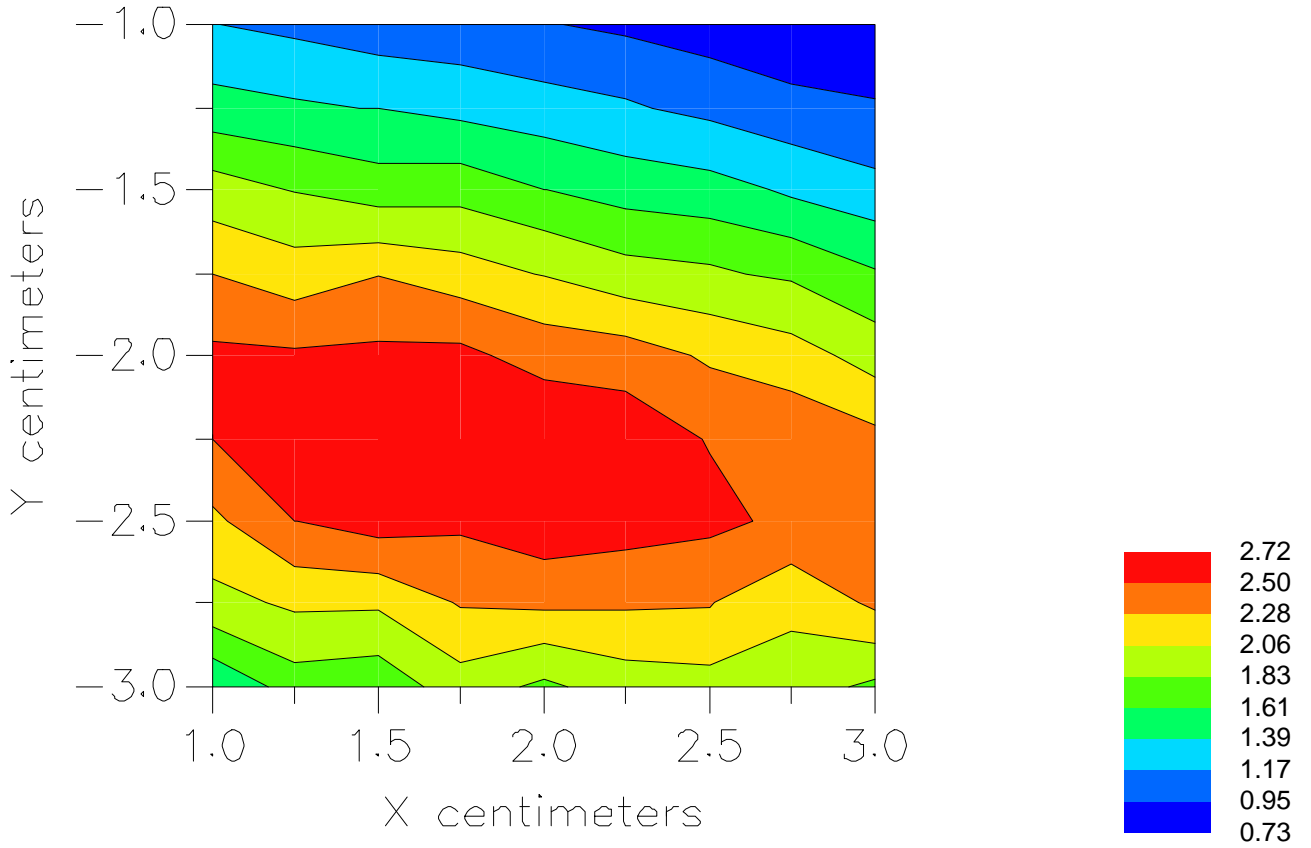


File : 02013012_ZOOM

Start : 30-Jan-102 12:04:24 pm End : 30-Jan-102 12:20:12 pm

Validation//C;835MHz;W;Dipole/Internal;

Flat/E Field;ZOOM/SAR;PCTEST/E Field/0 DegreesMuscle/56.100/0.950



File : c:/idx3/SYSTEM/SARMEAS3/data/Normal/02011630_ZOOM.VLT
Start : 16-Jan-102 06:58:43 pm End : 16-Jan-102 07:13:05 pm

Radio Type : Validation
Model Number :
Serial Number : C
Frequency : 1900 MHz
Peak Trans. Pwr : 0.250 W
Start Trans. Pwr : 0.250 W
Antenna Type : Dipole
Antenna Posn. : Internal
Phantom Type : Flat
Phantom Posn. : E Field
Scan Type : ZOOM/SAR
Probe Name : PCTEST
Field Type : E Field
Orientation : 0 Degrees

Mixture Type = Muscle
Mixture Dielectric Constant = 54.200
Mixture Conductivity = 1.450

Comment :
1900 MHz Dipole Validation
SN: C

Robot : PCTEST

Probe Offset = 0.20 cm
Sensor Factor = 0.0108
Conversion Factor = 0.496

PCTEST Amplifier Channel Settings : 0.309 0.361 0.421

Max Location : X = 1.500, Y = -1.750, Z = 0.000 (cm) Value = 197.854

Measured Values (volts) =
2.064E-001 1.318E-001 8.987E-002 6.346E-002 4.708E-002 3.322E-002
2.407E-002 1.680E-002 1.200E-002 8.758E-003 6.158E-003 4.441E-003
3.363E-003 2.430E-003 1.916E-003 1.508E-003 1.117E-003 1.130E-003
1.024E-003 1.204E-003 1.008E-003

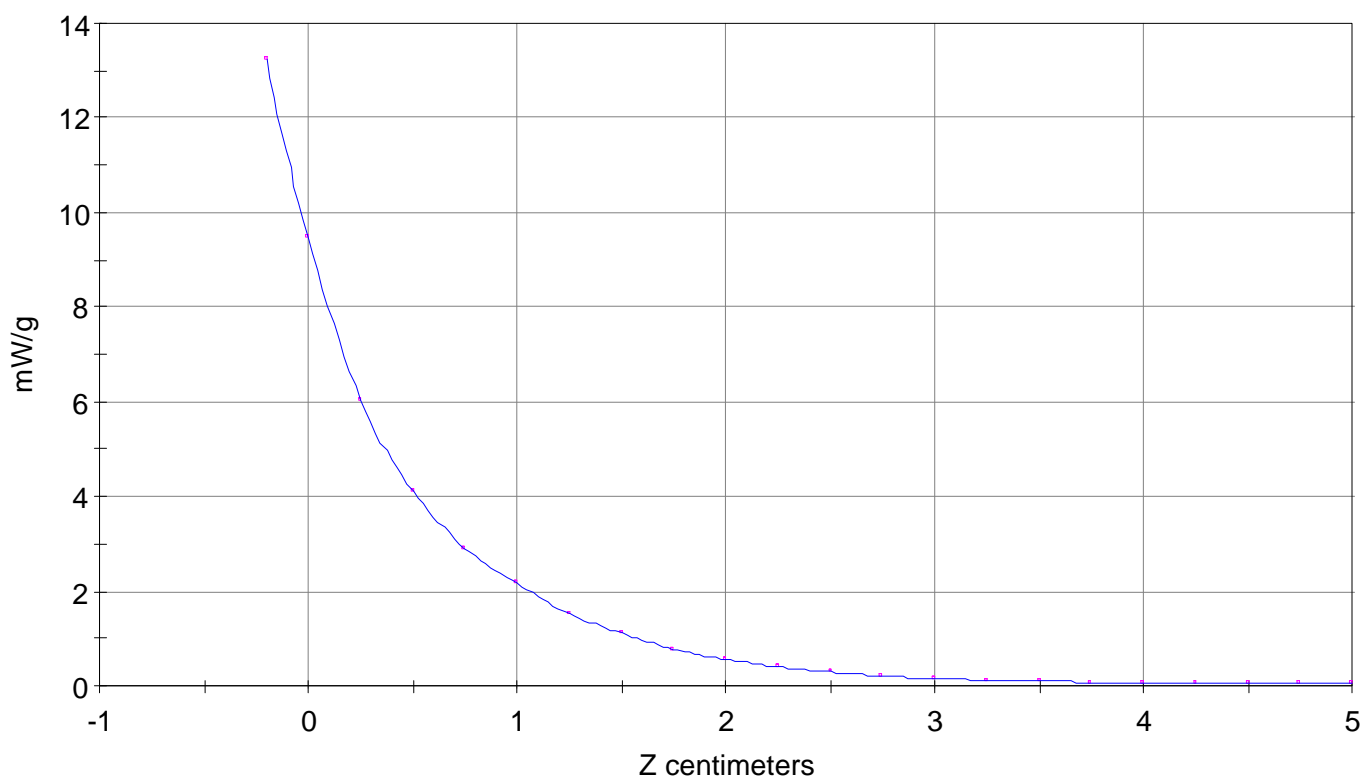
Calc. Voltage @ Surface (Vs) = 0.2880

Voltage @ 1.00 cm (Vt) = 0.0602

Ave. Voltage (Vs+Vt)/2 = 0.1741

Ave. SAR over 1 g (mW/g) = 7.9948

SAR Scan
File : 02011630_ZOOM
Start : 16-Jan-102 06:58:43 pm End : 16-Jan-102 07:13:05 pm
Validation//C;1900MHz;W;Dipole/Internal;
Flat/E Field;ZOOM/SAR;PCTEST/E Field/0 DegreesMuscle/54.200/1.450

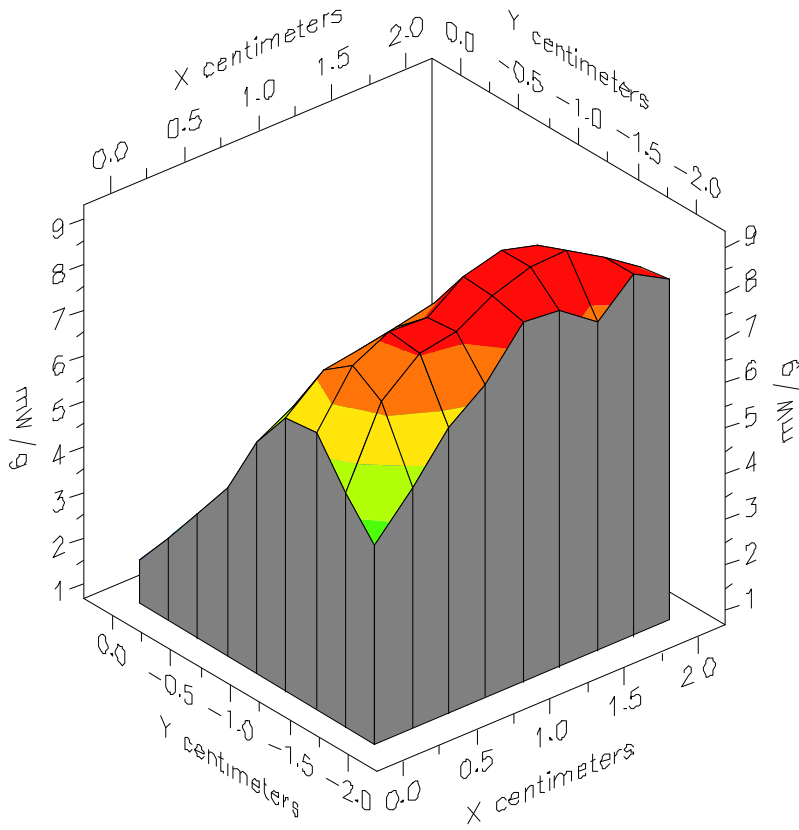


File : 02011630_ZOOM

Start : 16-Jan-102 06:58:43 pm End : 16-Jan-102 07:13:05 pm

Validation//C;1900MHz;W;Dipole/Internal;

Flat/E Field;ZOOM/SAR;PCTEST/E Field/0 DegreesMuscle/54.200/1.450



File : 02011630_ZOOM

Start : 16-Jan-102 06:58:43 pm End : 16-Jan-102 07:13:05 pm

Validation//C;1900MHz;W;Dipole/Internal;

Flat/E Field;ZOOM/SAR;PCTEST/E Field/0 DegreesMuscle/54.200/1.450

