

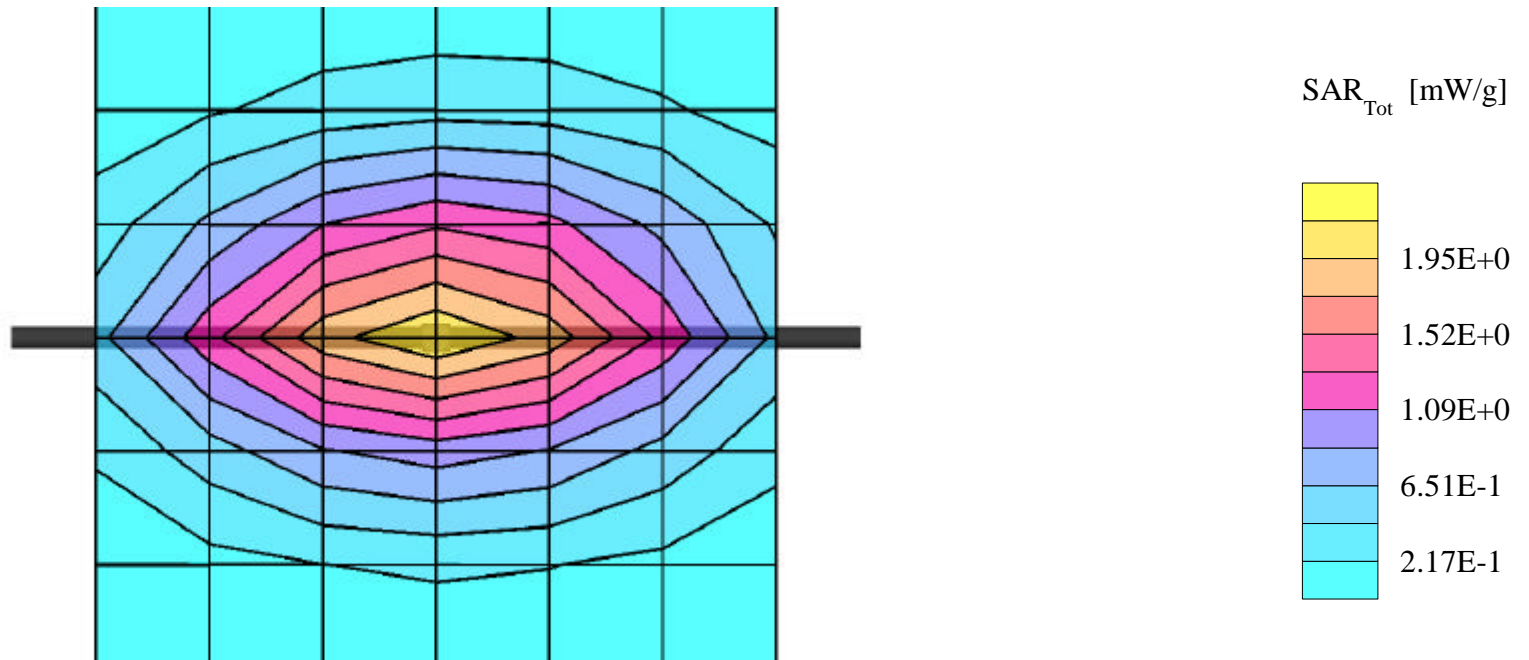
835MHz Brain Dipole Validation

Generic Twin Phantom; Flat Section; Probe: ET3DV6 - SN1560 -- Probe Cal Date 20/02/01

Med. Parameters 835 MHz Brain: $\sigma = 0.90$ mho/m $\epsilon_r = 41.5$ $\rho = 1.00$ g/cm³; Antenna Position -- Out; Crest Factor 1.0

SAR (1g): 2.14 mW/g, SAR (10g): 1.43 mW/g

835MHz Brain Dipole Validation (D835V2 S/N: 406)
Frequency: 835 MHz; Antenna Input Power: 250 [mW]
PCTEST Brain Tissue Simulating Liquid



835MHz Muscle Dipole Validation

Generic Twin Phantom; Flat Section; Probe: ET3DV6 - SN1560 -- Probe Cal Date 20/02/01

Med. Parameters 835 MHz Muscle: $\sigma = 0.95$ mho/m $\epsilon_r = 56.2$ $\rho = 1.00$ g/cm³; Antenna Position -- Out; Crest Factor 1.0

SAR (1g): 2.07 mW/g, SAR (10g): 1.38 mW/g

835MHz Muscle Dipole Validation (D835V2 S/N: 406)

Frequency: 835 MHz; Antenna Input Power: 250 [mW]

PCTEST Muscle Tissue Simulating Liquid

