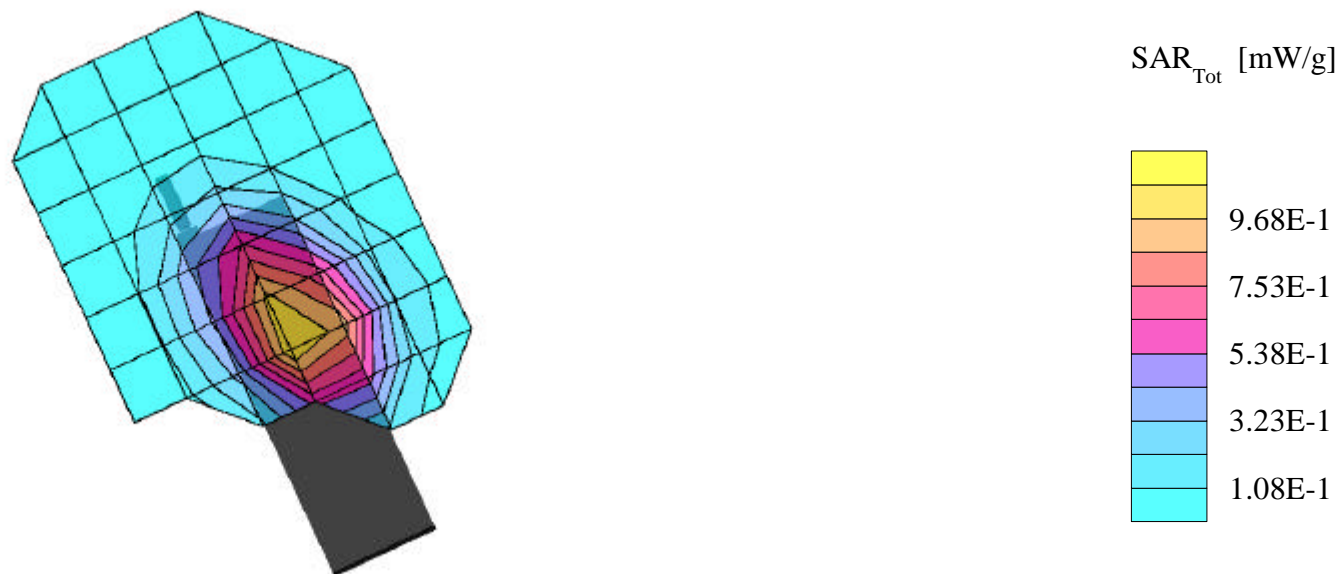


SANYO FCC ID:AEZSCP-600 -- Cellular CDMA Head SAR

Generic Twin Phantom; Right Hand Section; Probe: ET3DV6 - SN1560 -- Probe Cal Date 20/02/01
Med. Parameters 835 MHz Brain: $\sigma = 0.90$ mho/m $\epsilon_r = 41.5$ $\rho = 1.00$ g/cm³; Antenna Position -- In; Crest Factor 1.0
SAR (1g): 1.26 mW/g, SAR (10g): 0.871 mW/g

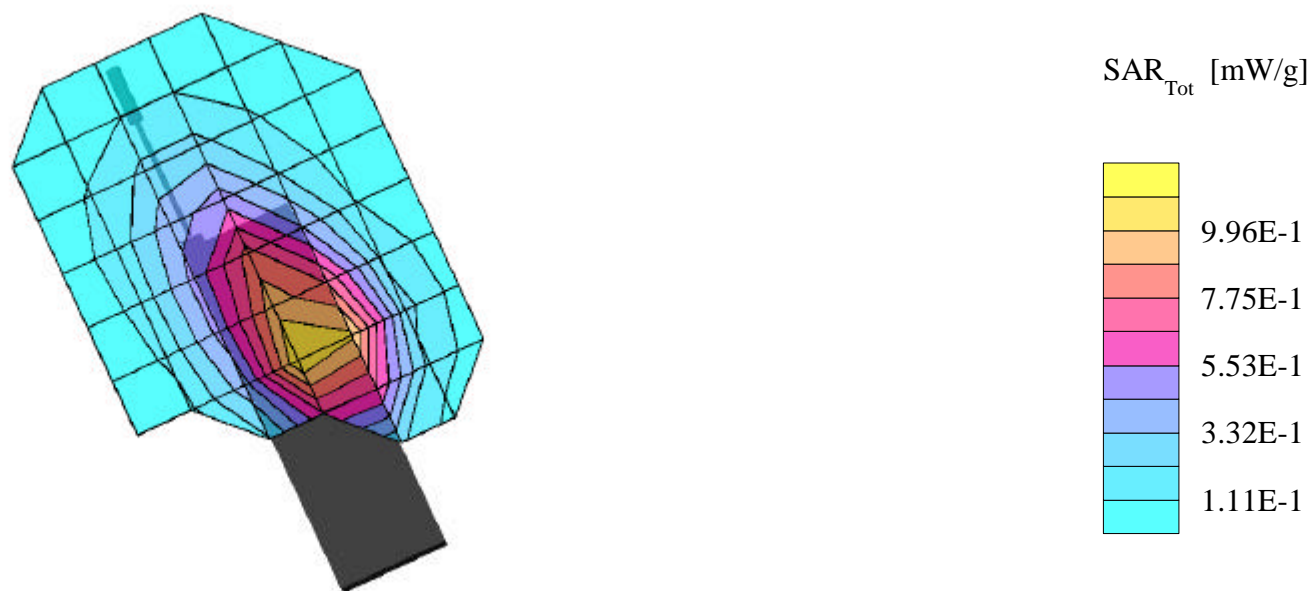
SANYO Cellular CDMA Single-Mode Model:SCP-600
Cellular CDMA Mode, Ch.1013 [824.70MHz]
Conducted Power = 24.6dBm
Test Date -- 04/09/2001



SANYO FCC ID:AEZSCP-600 -- Cellular CDMA Head SAR

Generic Twin Phantom; Right Hand Section; Probe: ET3DV6 - SN1560 -- Probe Cal Date 20/02/01
Med. Parameters 835 MHz Brain: $\sigma = 0.90$ mho/m $\epsilon_r = 41.5$ $\rho = 1.00$ g/cm³; Antenna Position -- Out; Crest Factor 1.0
SAR (1g): 1.23 mW/g, SAR (10g): 0.857 mW/g

SANYO Cellular CDMA Single-Mode Model:SCP-600
Cellular CDMA Mode, Ch.1013 [824.70MHz]
Conducted Power = 24.6dBm
Test Date -- 04/09/2001



SANYO FCC ID:AEZSCP-600 -- Cellular CDMA Head SAR

Generic Twin Phantom; Right Hand Section; Probe: ET3DV6 - SN1560 -- Probe Cal Date 20/02/01

Med. Parameters 835 MHz Brain: $\sigma = 0.90$ mho/m $\epsilon_r = 41.5$ $\rho = 1.00$ g/cm³; Antenna Position -- In; Crest Factor 1.0

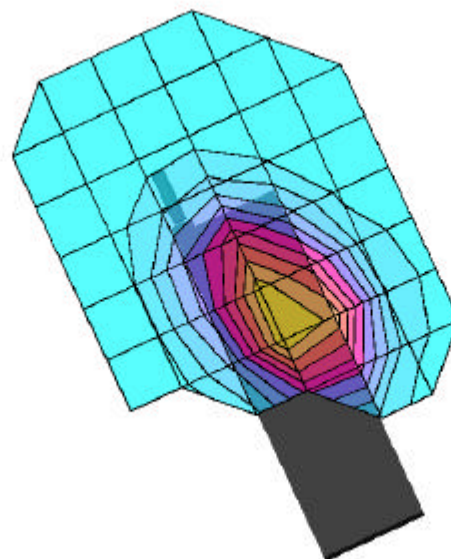
SAR (1g): 1.19 mW/g, SAR (10g): 0.823 mW/g

SANYO Cellular CDMA Single-Mode Model:SCP-600

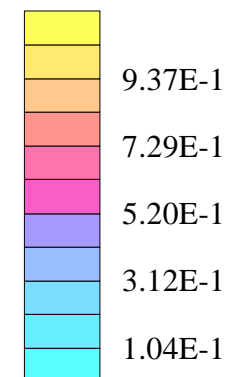
Cellular CDMA Mode, Ch.0383 [836.49MHz]

Conducted Power = 24.6dBm

Test Date -- 04/09/2001



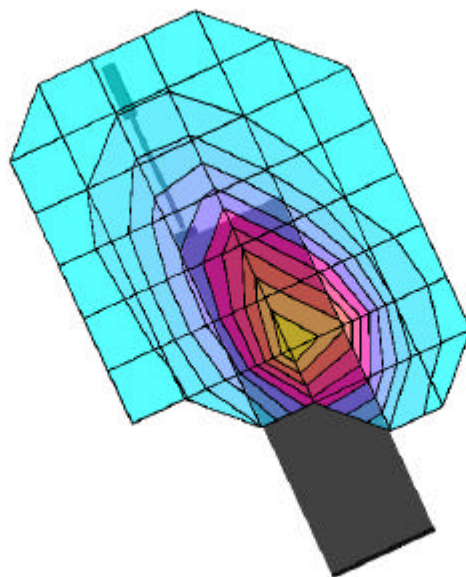
SAR_{Tot} [mW/g]



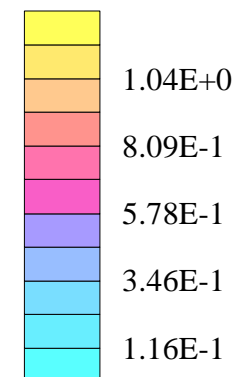
SANYO FCC ID:AEZSCP-600 -- Cellular CDMA Head SAR

Generic Twin Phantom; Right Hand Section; Probe: ET3DV6 - SN1560 -- Probe Cal Date 20/02/01
Med. Parameters 835 MHz Brain: $\sigma = 0.90$ mho/m $\epsilon_r = 41.5$ $\rho = 1.00$ g/cm³; Antenna Position -- Out; Crest Factor 1.0
SAR (1g): 1.26 mW/g, SAR (10g): 0.862 mW/g

SANYO Cellular CDMA Single-Mode Model:SCP-600
Cellular CDMA Mode, Ch.0383 [836.49MHz]
Conducted Power = 24.6dBm
Test Date -- 04/09/2001



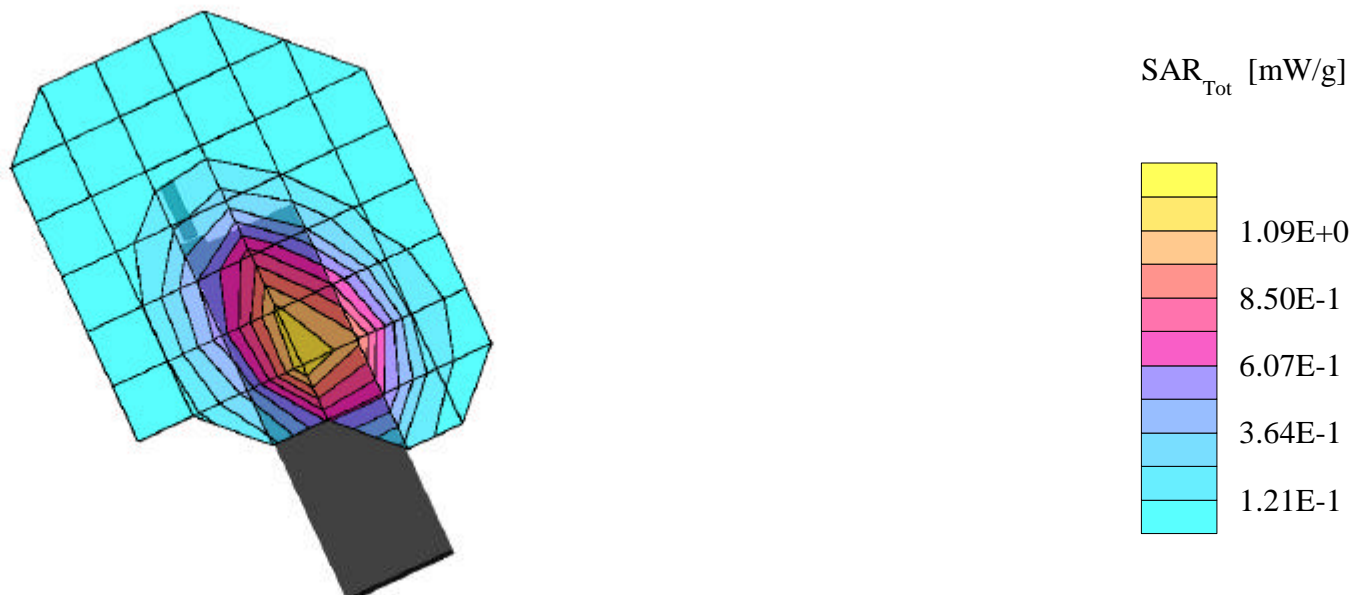
SAR_{Tot} [mW/g]



SANYO FCC ID:AEZSCP-600 -- Cellular CDMA Head SAR

Generic Twin Phantom; Right Hand Section; Probe: ET3DV6 - SN1560 -- Probe Cal Date 20/02/01
Med. Parameters 835 MHz Brain: $\sigma = 0.90$ mho/m $\epsilon_r = 41.5$ $\rho = 1.00$ g/cm³; Antenna Position -- In; Crest Factor 1.0
SAR (1g): 1.34 mW/g, SAR (10g): 0.914 mW/g

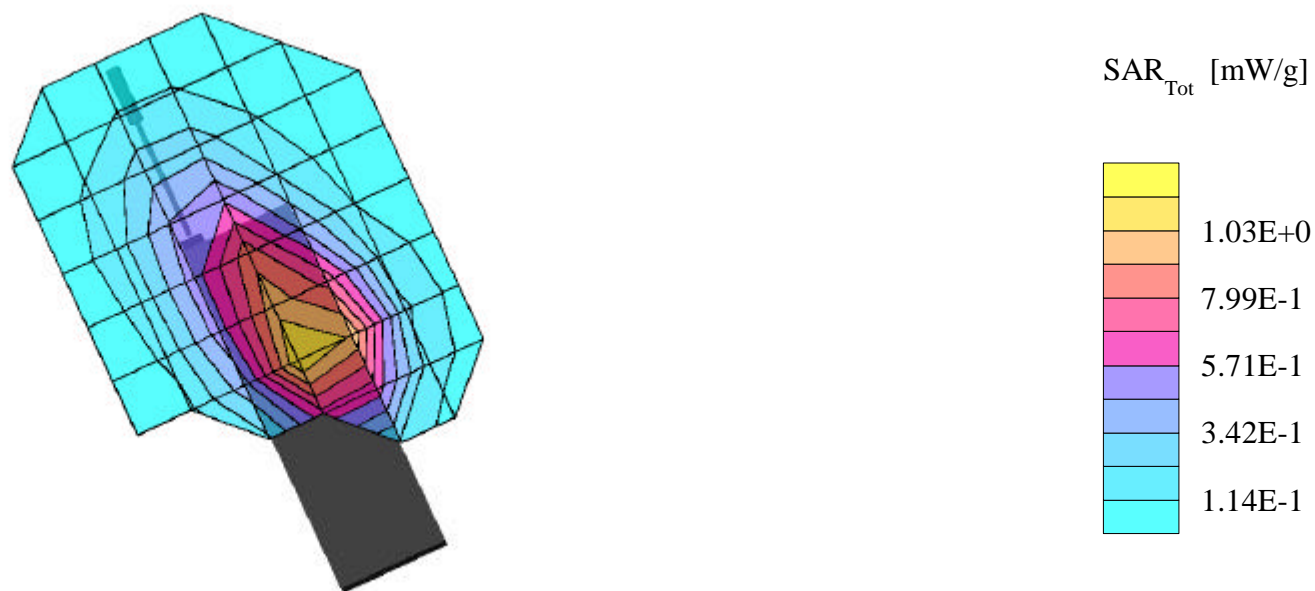
SANYO Cellular CDMA Single-Mode Model:SCP-600
Cellular CDMA Mode, Ch.0777 [848.31MHz]
Conducted Power = 24.6dBm
Test Date -- 04/09/2001



SANYO FCC ID:AEZSCP-600 -- Cellular CDMA Head SAR

Generic Twin Phantom; Right Hand Section; Probe: ET3DV6 - SN1560 -- Probe Cal Date 20/02/01
Med. Parameters 835 MHz Brain: $\sigma = 0.90$ mho/m $\epsilon_r = 41.5$ $\rho = 1.00$ g/cm³; Antenna Position -- Out; Crest Factor 1.0
SAR (1g): 1.25 mW/g, SAR (10g): 0.864 mW/g

SANYO Cellular CDMA Single-Mode Model:SCP-600
Cellular CDMA Mode, Ch.0777 [848.31MHz]
Conducted Power = 24.6dBm
Test Date -- 04/09/2001



SANYO FCC ID:AEZSCP-600 -- Cellular CDMA Body SAR

Generic Twin Phantom; Flat Section; Probe: ET3DV6 - SN1560 -- Probe Cal Date 20/02/01

Med. Parameters 835 MHz Muscle: $\sigma = 0.95$ mho/m $\epsilon_r = 56.2$ $\rho = 1.00$ g/cm³; Antenna Position -- In; Crest Factor 1.0

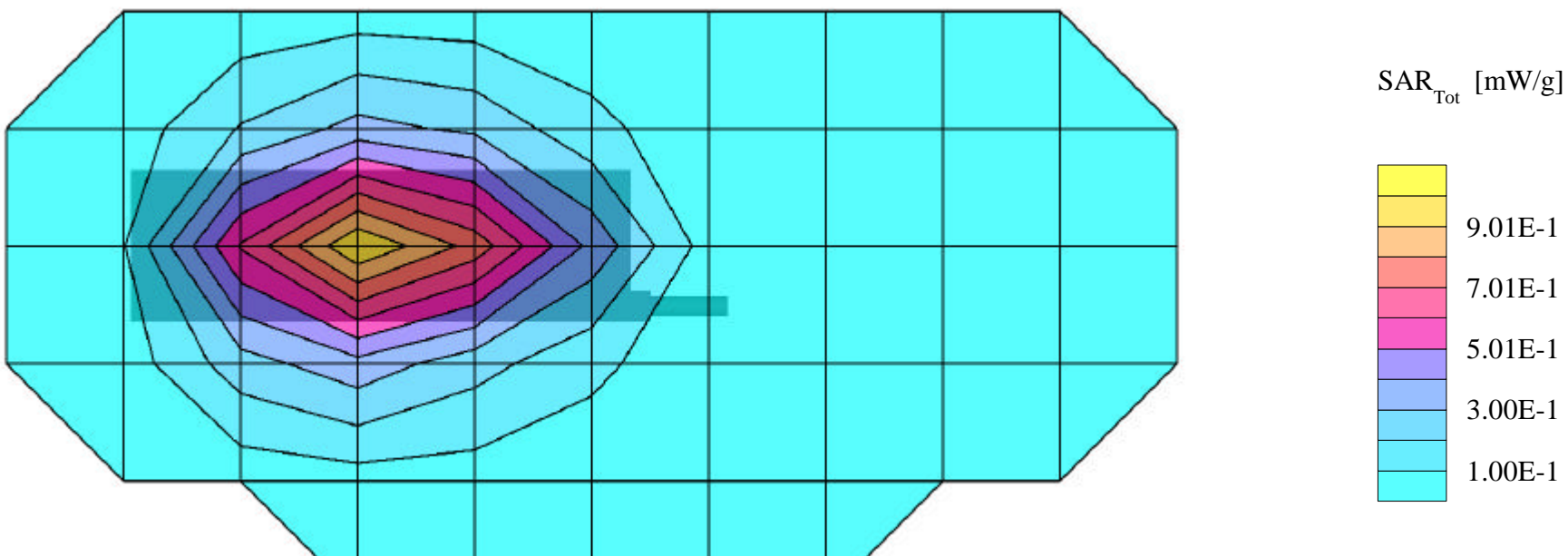
SAR (1g): 1.00 mW/g, SAR (10g): 0.712 mW/g

SANYO Cellular CDMA Single-Mode Model:SCP-600

Cellular CDMA Mode, Ch.1013 [824.70MHz]

Conducted Power = 24.6dBm; Spacing = 1.0cm from flat phantom, w/o beltclip or holster

Test Date -- 04/10/2001



SANYO FCC ID:AEZSCP-600 -- Cellular CDMA Body SAR

Generic Twin Phantom; Flat Section; Probe: ET3DV6 - SN1560 -- Probe Cal Date 20/02/01

Med. Parameters 835 MHz Muscle: $\sigma = 0.95$ mho/m $\epsilon_r = 56.2$ $\rho = 1.00$ g/cm³; Antenna Position -- Out; Crest Factor 1.0

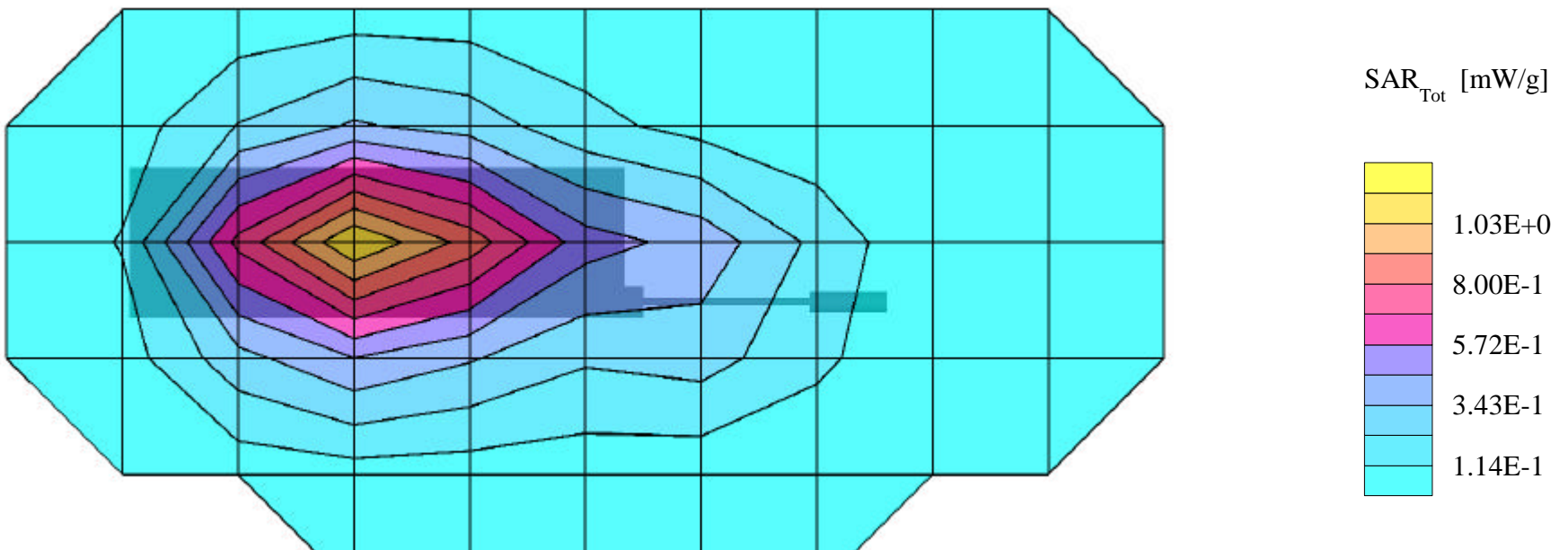
SAR (1g): 1.12 mW/g, SAR (10g): 0.797 mW/g

SANYO Cellular CDMA Single-Mode Model:SCP-600

Cellular CDMA Mode, Ch.1013 [824.70MHz]

Conducted Power = 24.6dBm; Spacing = 1.0cm from flat phantom, w/o beltclip or holster

Test Date -- 04/10/2001



SANYO FCC ID:AEZSCP-600 -- Cellular CDMA Body SAR

Generic Twin Phantom; Flat Section; Probe: ET3DV6 - SN1560 -- Probe Cal Date 20/02/01

Med. Parameters 835 MHz Muscle: $\sigma = 0.95$ mho/m $\epsilon_r = 56.2$ $\rho = 1.00$ g/cm³; Antenna Position -- In; Crest Factor 1.0

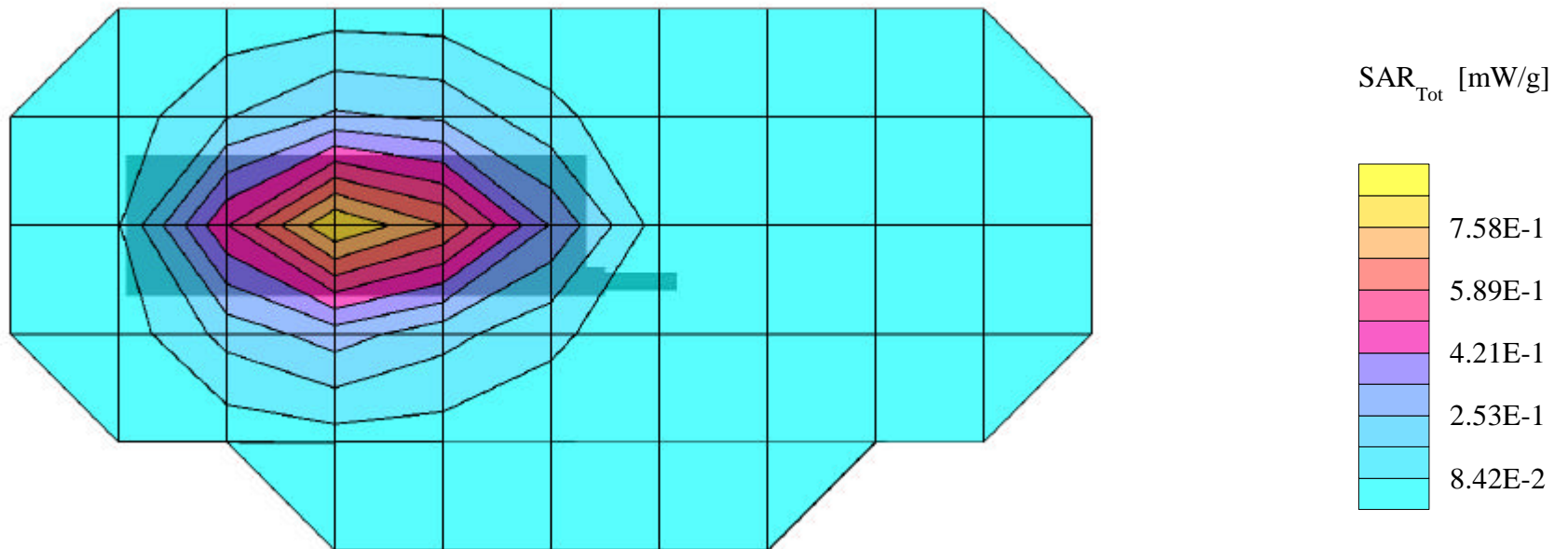
SAR (1g): 1.00 mW/g, SAR (10g): 0.705 mW/g

SANYO Cellular CDMA Single-Mode Model:SCP-600

Cellular CDMA Mode, Ch.0383 [836.49MHz]

Conducted Power = 24.6dBm; Spacing = 1.0cm from flat phantom, w/o beltclip or holster

Test Date -- 04/10/2001



SANYO FCC ID:AEZSCP-600 -- Cellular CDMA Body SAR

Generic Twin Phantom; Flat Section; Probe: ET3DV6 - SN1560 -- Probe Cal Date 20/02/01

Med. Parameters 835 MHz Muscle: $\sigma = 0.95$ mho/m $\epsilon_r = 56.2$ $\rho = 1.00$ g/cm³; Antenna Position -- Out; Crest Factor 1.0

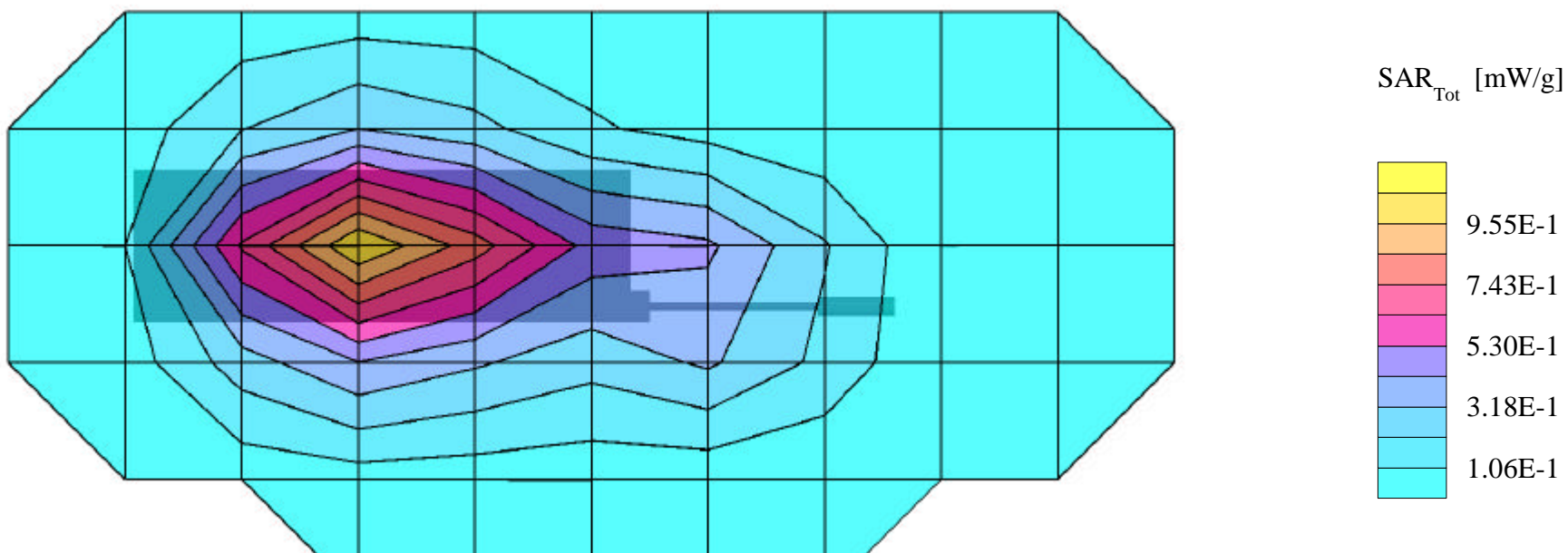
SAR (1g): 1.07 mW/g, SAR (10g): 0.758 mW/g

SANYO Cellular CDMA Single-Mode Model:SCP-600

Cellular CDMA Mode, Ch.0383 [836.49MHz]

Conducted Power = 24.6dBm; Spacing = 1.0cm from flat phantom, w/o beltclip or holster

Test Date -- 04/10/2001



SANYO FCC ID:AEZSCP-600 -- Cellular CDMA Body SAR

Generic Twin Phantom; Flat Section; Probe: ET3DV6 - SN1560 -- Probe Cal Date 20/02/01

Med. Parameters 835 MHz Muscle: $\sigma = 0.95$ mho/m $\epsilon_r = 56.2$ $\rho = 1.00$ g/cm³; Antenna Position -- In; Crest Factor 1.0

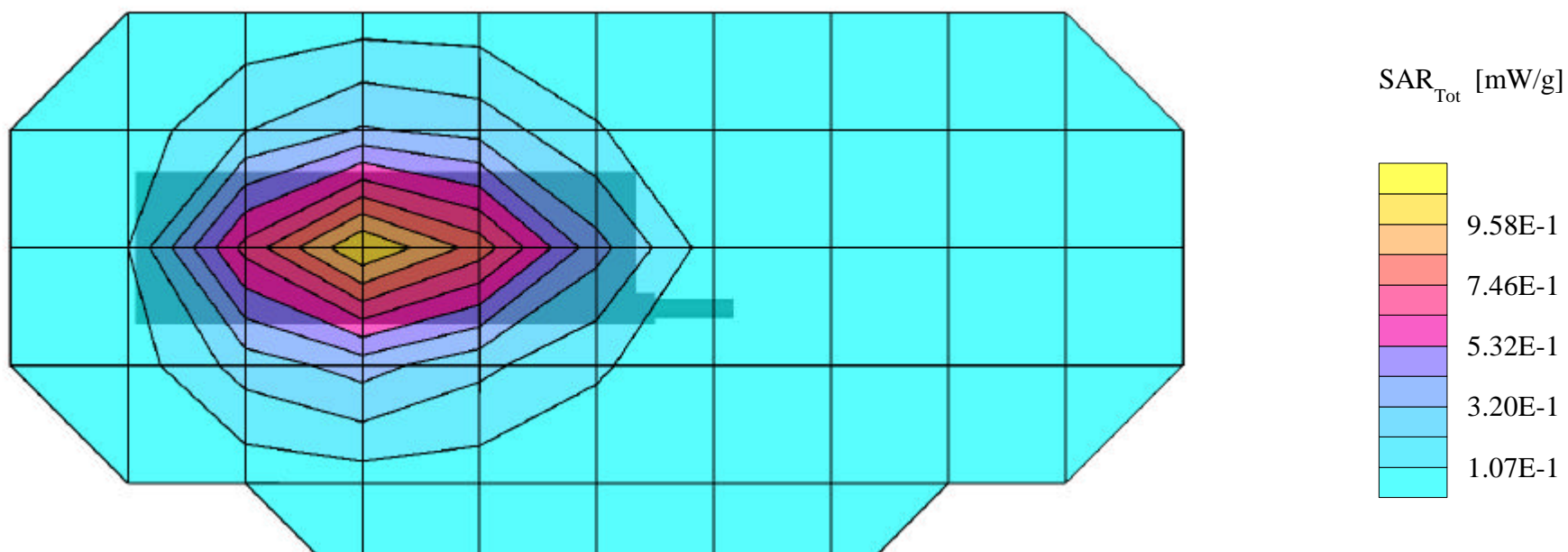
SAR (1g): 1.06 mW/g, SAR (10g): 0.751 mW/g

SANYO Cellular CDMA Single-Mode Model:SCP-600

Cellular CDMA Mode, Ch.0777 [848.37MHz]

Conducted Power = 24.6dBm; Spacing = 1.0cm from flat phantom, w/o beltclip or holster

Test Date -- 04/10/2001



SANYO FCC ID:AEZSCP-600 -- Cellular CDMA Body SAR

Generic Twin Phantom; Flat Section; Probe: ET3DV6 - SN1560 -- Probe Cal Date 20/02/01

Med. Parameters 835 MHz Muscle: $\sigma = 0.95$ mho/m $\epsilon_r = 56.2$ $\rho = 1.00$ g/cm³; Antenna Position -- Out; Crest Factor 1.0

SAR (1g): 1.05 mW/g, SAR (10g): 0.741 mW/g

SANYO Cellular CDMA Single-Mode Model:SCP-600

Cellular CDMA Mode, Ch.0777 [848.37MHz]

Conducted Power = 24.6dBm; Spacing = 1.0cm from flat phantom, w/o beltclip or holster

Test Date -- 04/10/2001

