

# Peak SAR Location

---

1800 MHz Head SAR



File : c:/idx3/SYSTEM/SARMEAS3/data/Normal/01091105\_ZOOM.VLT  
Start : 11-Sep-101 10:56:00 am End : 11-Sep-101 11:05:19 am

Radio Type : SANYO  
Model Number : SCP-5150  
Serial Number : 1  
Frequency : 1851.25 MHz  
Peak Trans. Pwr : 0.320 W  
Start Trans. Pwr : 0.320 W  
Antenna Type : Helical  
Antenna Posn. : In  
Phantom Type : Head  
Phantom Posn. : Left Ear  
Scan Type : ZOOM/SAR  
Probe Name : PCTEST  
Field Type : E Field  
Orientation : 0 Degrees

Mixture Type = Brain  
Mixture Dielectric Constant = 40.400  
Mixture Conductivity = 1.620

Comment :  
SANYO DUAL-BAND PHONE - PCS MODE  
CH 0025 Conducted 25.0 dBm  
SANYO DUAL-BAND PHONE

Robot : PCTEST

Probe Offset = 0.25 cm  
Sensor Factor = 0.0108  
Conversion Factor = 1.201

PCTEST Amplifier Channel Settings : 0.245 0.231 0.224

Max Location : X = 1.500, Y = -1.250, Z = 0.000 (cm) Value = 10.850

Measured Values (volts) =  
1.054E-002 8.355E-003 6.134E-003 4.482E-003 3.233E-003 2.427E-003  
1.686E-003 1.249E-003 9.014E-004 6.148E-004 4.267E-004 2.503E-004  
1.289E-004 9.780E-005 7.200E-005 3.357E-005 0.000E+000 3.738E-007  
0.000E+000 0.000E+000 0.000E+000

Calc. Voltage @ Surface (Vs) = 0.0138

Voltage @ 1.00 cm (Vt) = 0.0045

Ave. Voltage (Vs+Vt)/2 = 0.0092

Ave. SAR over 1 g (mW/g) = 1.0179

File : c:/idx3/SYSTEM/SARMEAS3/data/Normal/01091120\_ZOOM.VLT  
Start : 11-Sep-101 02:26:12 pm End : 11-Sep-101 02:35:34 pm

Radio Type : SANYO  
Model Number : SCP-5150  
Serial Number : 1  
Frequency : 1851.25 MHz  
Peak Trans. Pwr : 0.320 W  
Start Trans. Pwr : 0.320 W  
Antenna Type : Helical  
Antenna Posn. : Out  
Phantom Type : Head  
Phantom Posn. : Left Ear  
Scan Type : ZOOM/SAR  
Probe Name : PCTEST  
Field Type : E Field  
Orientation : 0 Degrees

Mixture Type = Brain  
Mixture Dielectric Constant = 40.400  
Mixture Conductivity = 1.620

Comment :  
SANYO DUAL-BAND PHONE - PCS MODE  
CH 0025 Conducted 25.0 dBm  
SANYO DUAL-BAND PHONE

Robot : PCTEST

Probe Offset = 0.25 cm  
Sensor Factor = 0.0108  
Conversion Factor = 1.201

PCTEST Amplifier Channel Settings : 0.245 0.231 0.224

Max Location : X = 1.500, Y = -1.250, Z = 0.000 (cm) Value = 8.997

Measured Values (volts) =  
8.990E-003 6.841E-003 5.003E-003 3.542E-003 2.542E-003 1.918E-003  
1.376E-003 1.034E-003 6.846E-004 4.999E-004 3.673E-004 2.341E-004  
1.330E-004 6.931E-005 3.365E-005 1.802E-005 0.000E+000 0.000E+000  
0.000E+000 0.000E+000 0.000E+000

Calc. Voltage @ Surface (Vs) = 0.0121

Voltage @ 1.00 cm (Vt) = 0.0035

Ave. Voltage (Vs+Vt)/2 = 0.0078

Ave. SAR over 1 g (mW/g) = 0.8671

File : c:/idx3/SYSTEM/SARMEAS3/data/Normal/01091108\_ZOOM.VLT  
Start : 11-Sep-101 11:30:06 am End : 11-Sep-101 11:39:26 am

Radio Type : SANYO  
Model Number : SCP-5150  
Serial Number : 1  
Frequency : 1880.00 MHz  
Peak Trans. Pwr : 0.320 W  
Start Trans. Pwr : 0.320 W  
Antenna Type : Helical  
Antenna Posn. : In  
Phantom Type : Head  
Phantom Posn. : Left Ear  
Scan Type : ZOOM/SAR  
Probe Name : PCTEST  
Field Type : E Field  
Orientation : 0 Degrees

Mixture Type = Brain  
Mixture Dielectric Constant = 40.400  
Mixture Conductivity = 1.620

Comment :  
SANYO DUAL-BAND PHONE - PCS MODE  
CH 0600 Conducted 25.0 dBm  
SANYO DUAL-BAND PHONE

Robot : PCTEST

Probe Offset = 0.25 cm  
Sensor Factor = 0.0108  
Conversion Factor = 1.201

PCTEST Amplifier Channel Settings : 0.245 0.231 0.224

Max Location : X = 1.750, Y = -1.500, Z = 0.000 (cm) Value = 6.927

Measured Values (volts) =  
6.797E-003 5.215E-003 3.677E-003 2.543E-003 1.780E-003 1.134E-003  
7.644E-004 5.186E-004 2.613E-004 1.555E-004 8.897E-005 6.565E-005  
3.297E-005 6.505E-006 0.000E+000 0.000E+000 0.000E+000 0.000E+000  
0.000E+000 0.000E+000 0.000E+000

Calc. Voltage @ Surface (Vs) = 0.0092

Voltage @ 1.00 cm (Vt) = 0.0025

Ave. Voltage (Vs+Vt)/2 = 0.0059

Ave. SAR over 1 g (mW/g) = 0.6557

File : c:/idx3/SYSTEM/SARMEAS3/data/Normal/01091109\_ZOOM.VLT  
Start : 11-Sep-101 11:40:53 am End : 11-Sep-101 11:50:13 am

Radio Type : SANYO  
Model Number : SCP-5150  
Serial Number : 1  
Frequency : 1880.00 MHz  
Peak Trans. Pwr : 0.320 W  
Start Trans. Pwr : 0.320 W  
Antenna Type : Helical  
Antenna Posn. : Out  
Phantom Type : Head  
Phantom Posn. : Left Ear  
Scan Type : ZOOM/SAR  
Probe Name : PCTEST  
Field Type : E Field  
Orientation : 0 Degrees

Mixture Type = Brain  
Mixture Dielectric Constant = 40.400  
Mixture Conductivity = 1.620

Comment :  
SANYO DUAL-BAND PHONE - PCS MODE  
CH 0600 Conducted 25.0 dBm  
SANYO DUAL-BAND PHONE

Robot : PCTEST

Probe Offset = 0.25 cm  
Sensor Factor = 0.0108  
Conversion Factor = 1.201

PCTEST Amplifier Channel Settings : 0.245 0.231 0.224

Max Location : X = 1.500, Y = -1.250, Z = 0.000 (cm) Value = 7.596

Measured Values (volts) =  
7.655E-003 6.159E-003 4.423E-003 3.132E-003 2.417E-003 1.668E-003  
1.139E-003 7.644E-004 4.936E-004 3.403E-004 2.124E-004 1.054E-004  
4.187E-005 3.267E-005 2.938E-005 2.183E-005 0.000E+000 0.000E+000  
0.000E+000 0.000E+000 0.000E+000

Calc. Voltage @ Surface (Vs) = 0.0101

Voltage @ 1.00 cm (Vt) = 0.0031

Ave. Voltage (Vs+Vt)/2 = 0.0066

Ave. SAR over 1 g (mW/g) = 0.7350

File : c:/idx3/SYSTEM/SARMEAS3/data/Normal/01091128\_ZOOM.VLT  
Start : 11-Sep-101 04:07:57 pm End : 11-Sep-101 04:13:50 pm

Radio Type : SANYO  
Model Number : SCP-5150  
Serial Number : 1  
Frequency : 1908.75 MHz  
Peak Trans. Pwr : 0.320 W  
Start Trans. Pwr : 0.320 W  
Antenna Type : Helical  
Antenna Posn. : In  
Phantom Type : Head  
Phantom Posn. : Left Ear  
Scan Type : ZOOM/SAR  
Probe Name : PCTEST  
Field Type : E Field  
Orientation : 0 Degrees

Mixture Type = Brain  
Mixture Dielectric Constant = 40.400  
Mixture Conductivity = 1.620

Comment :  
SANYO DUAL-BAND PHONE - PCS MODE  
CH 1175 Conducted 25.0 dBm  
SANYO DUAL-BAND PHONE

Robot : PCTEST

Probe Offset = 0.25 cm  
Sensor Factor = 0.0108  
Conversion Factor = 1.201

PCTEST Amplifier Channel Settings : 0.245 0.231 0.224

Max Location : X = 2.250, Y = -4.000, Z = 0.000 (cm) Value = 11.676

Measured Values (volts) =  
1.129E-002 7.398E-003 5.536E-003 4.189E-003 3.230E-003 2.388E-003  
1.832E-003 1.311E-003 9.698E-004 6.915E-004 4.766E-004 3.483E-004  
2.346E-004 1.546E-004 8.621E-005 2.916E-005 2.886E-005 0.000E+000  
1.241E-005 0.000E+000 0.000E+000

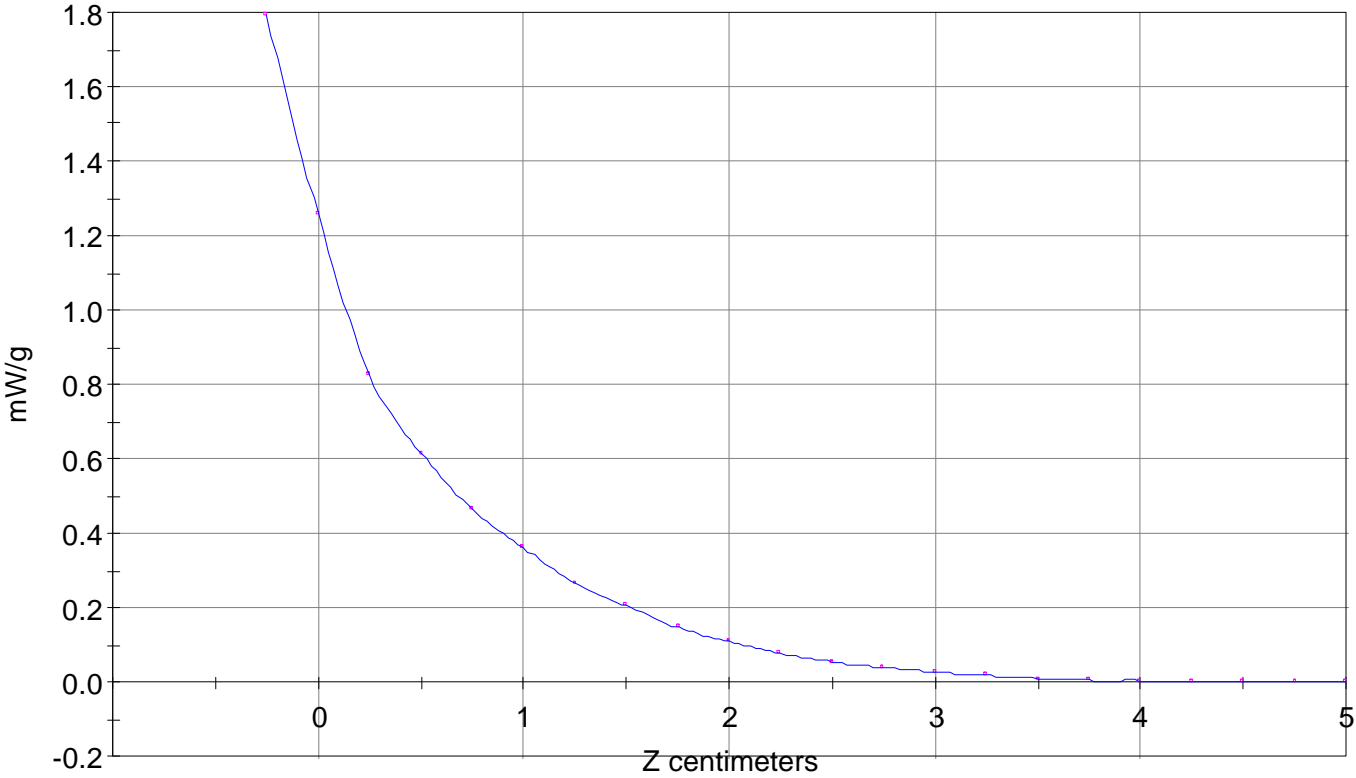
Calc. Voltage @ Surface (Vs) = 0.0161

Voltage @ 1.00 cm (Vt) = 0.0042

Ave. Voltage (Vs+Vt)/2 = 0.0102

Ave. SAR over 1 g (mW/g) = 1.1309

SAR Scan  
File : 01091128\_ZOOM  
Start : 11-Sep-101 04:07:57 pm End : 11-Sep-101 04:13:50 pm  
SANYO/SCP-5150/1;1908.75MHz;W;Helical/ln;  
Head/Left Ear;ZOOM/SAR;PCTEST/E Field/0 DegreesBrain/40.400/1.620

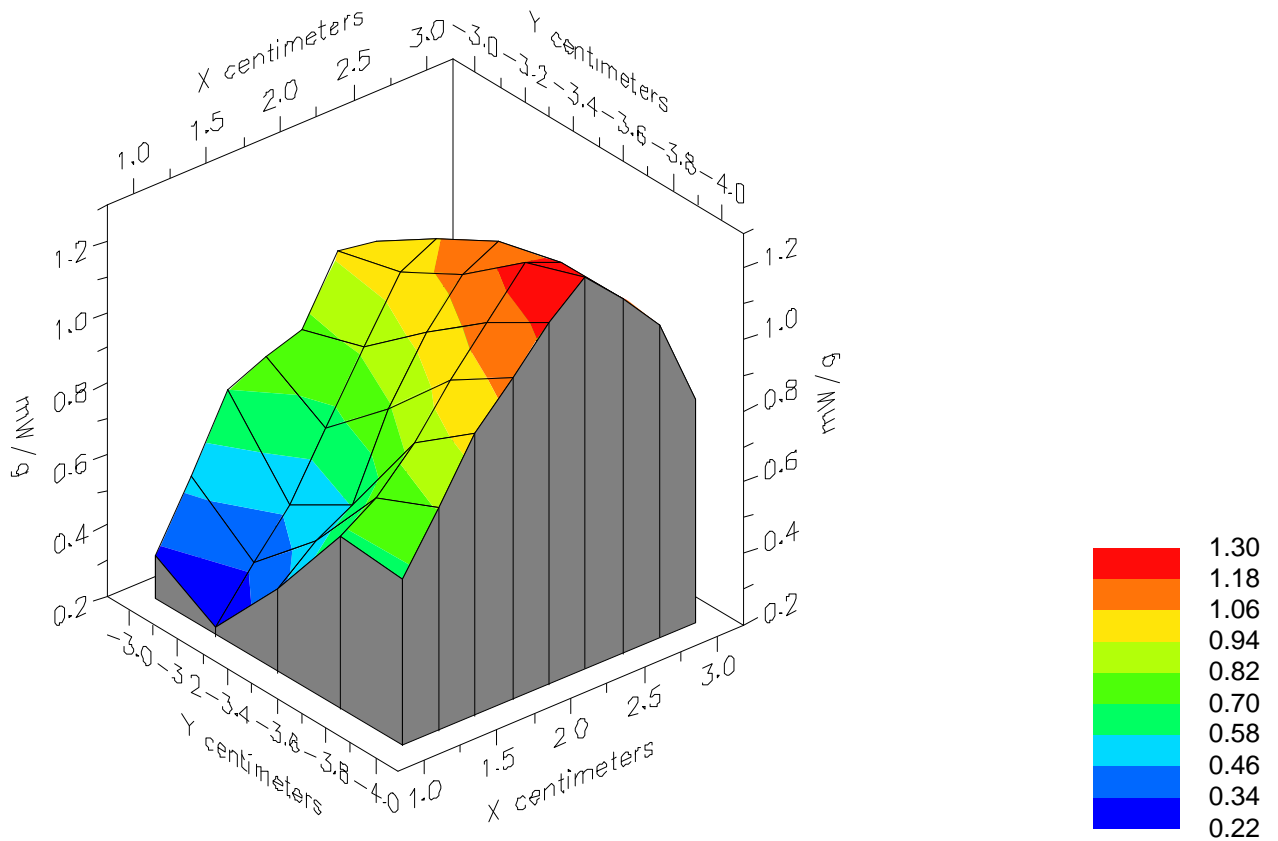


File : 01091128\_ZOOM

Start : 11-Sep-101 04:07:57 pm End : 11-Sep-101 04:13:50 pm

SANYO/SCP-5150/1;1908.75MHz;W;Helical/In;

Head/Left Ear;ZOOM/SAR;PCTEST/E Field/0 DegreesBrain/40.400/1.620



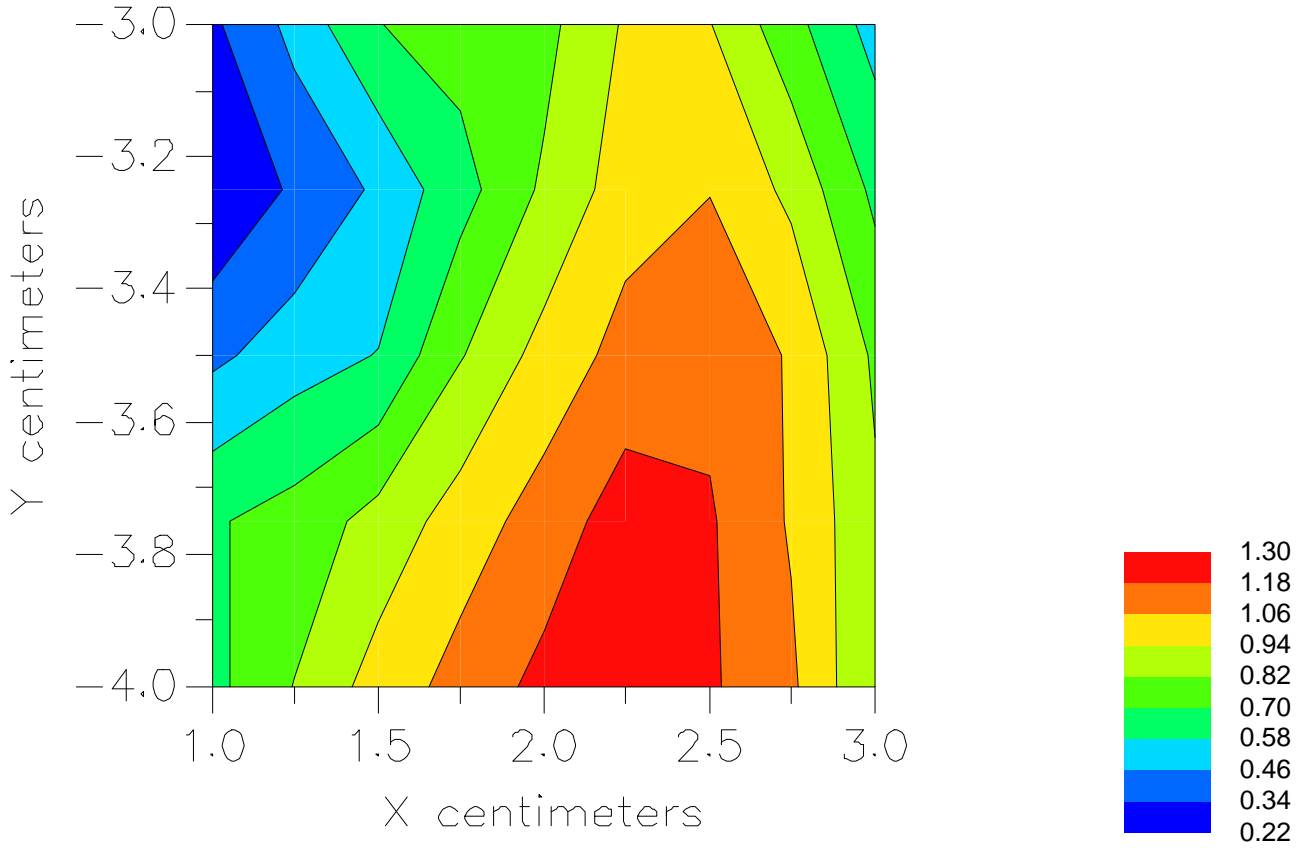


File : 01091128\_ZOOM

Start : 11-Sep-101 04:07:57 pm End : 11-Sep-101 04:13:50 pm

SANYO/SCP-5150/1;1908.75MHz;W;Helical/In;

Head/Left Ear;ZOOM/SAR;PCTEST/E Field/0 DegreesBrain/40.400/1.620



File : c:/idx3/SYSTEM/SARMEAS3/data/Normal/01091121\_ZOOM.VLT  
Start : 11-Sep-101 02:42:38 pm End : 11-Sep-101 02:52:00 pm

Radio Type : SANYO  
Model Number : SCP-5150  
Serial Number : 1  
Frequency : 1908.75 MHz  
Peak Trans. Pwr : 0.320 W  
Start Trans. Pwr : 0.320 W  
Antenna Type : Helical  
Antenna Posn. : Out  
Phantom Type : Head  
Phantom Posn. : Left Ear  
Scan Type : ZOOM/SAR  
Probe Name : PCTEST  
Field Type : E Field  
Orientation : 0 Degrees

Mixture Type = Brain  
Mixture Dielectric Constant = 40.400  
Mixture Conductivity = 1.620

Comment :  
SANYO DUAL-BAND PHONE - PCS MODE  
CH 1175 Conducted 25.0 dBm  
SANYO DUAL-BAND PHONE

Robot : PCTEST

Probe Offset = 0.25 cm  
Sensor Factor = 0.0108  
Conversion Factor = 1.201

PCTEST Amplifier Channel Settings : 0.245 0.231 0.224

Max Location : X = 1.250, Y = -1.000, Z = 0.000 (cm) Value = 7.029

Measured Values (volts) =  
6.957E-003 4.711E-003 3.295E-003 2.317E-003 1.707E-003 1.225E-003  
8.010E-004 5.983E-004 4.005E-004 2.314E-004 1.578E-004 9.734E-005  
7.424E-005 3.836E-005 2.183E-005 0.000E+000 3.514E-006 3.290E-006  
0.000E+000 0.000E+000 0.000E+000

Calc. Voltage @ Surface (Vs) = 0.0101

Voltage @ 1.00 cm (Vt) = 0.0023

Ave. Voltage (Vs+Vt)/2 = 0.0062

Ave. SAR over 1 g (mW/g) = 0.6909

File : c:/idx3/SYSTEM/SARMEAS3/data/Normal/01091118\_ZOOM.VLT  
Start : 11-Sep-101 01:45:11 pm End : 11-Sep-101 01:56:42 pm

Radio Type : SANYO  
Model Number : SCP-5150  
Serial Number : 1  
Frequency : 1908.75 MHz  
Peak Trans. Pwr : 0.320 W  
Start Trans. Pwr : 0.320 W  
Antenna Type : Helical  
Antenna Posn. : In  
Phantom Type : Head  
Phantom Posn. : Left Ear  
Scan Type : ZOOM/SAR  
Probe Name : PCTEST  
Field Type : E Field  
Orientation : 0 Degrees

Mixture Type = Brain  
Mixture Dielectric Constant = 40.400  
Mixture Conductivity = 1.620

Comment :  
SANYO DUAL-BAND PHONE - PCS MODE  
CH 1175 Conducted 25.0 dBm  
SANYO DUAL-BAND PHONE - TILT

Robot : PCTEST

Probe Offset = 0.25 cm  
Sensor Factor = 0.0108  
Conversion Factor = 1.201

PCTEST Amplifier Channel Settings : 0.245 0.231 0.224

Max Location : X = -0.500, Y = -3.500, Z = 0.000 (cm) Value = 1.418

Measured Values (volts) =  
1.386E-003 8.423E-004 5.932E-004 3.888E-004 2.781E-004 2.008E-004  
1.423E-004 8.247E-005 7.335E-005 4.882E-005 3.006E-005 0.000E+000  
8.524E-006 0.000E+000 0.000E+000 0.000E+000 0.000E+000 0.000E+000  
0.000E+000 0.000E+000 0.000E+000

Calc. Voltage @ Surface (Vs) = 0.0021

Voltage @ 1.00 cm (Vt) = 0.0004

Ave. Voltage (Vs+Vt)/2 = 0.0013

Ave. SAR over 1 g (mW/g) = 0.1397

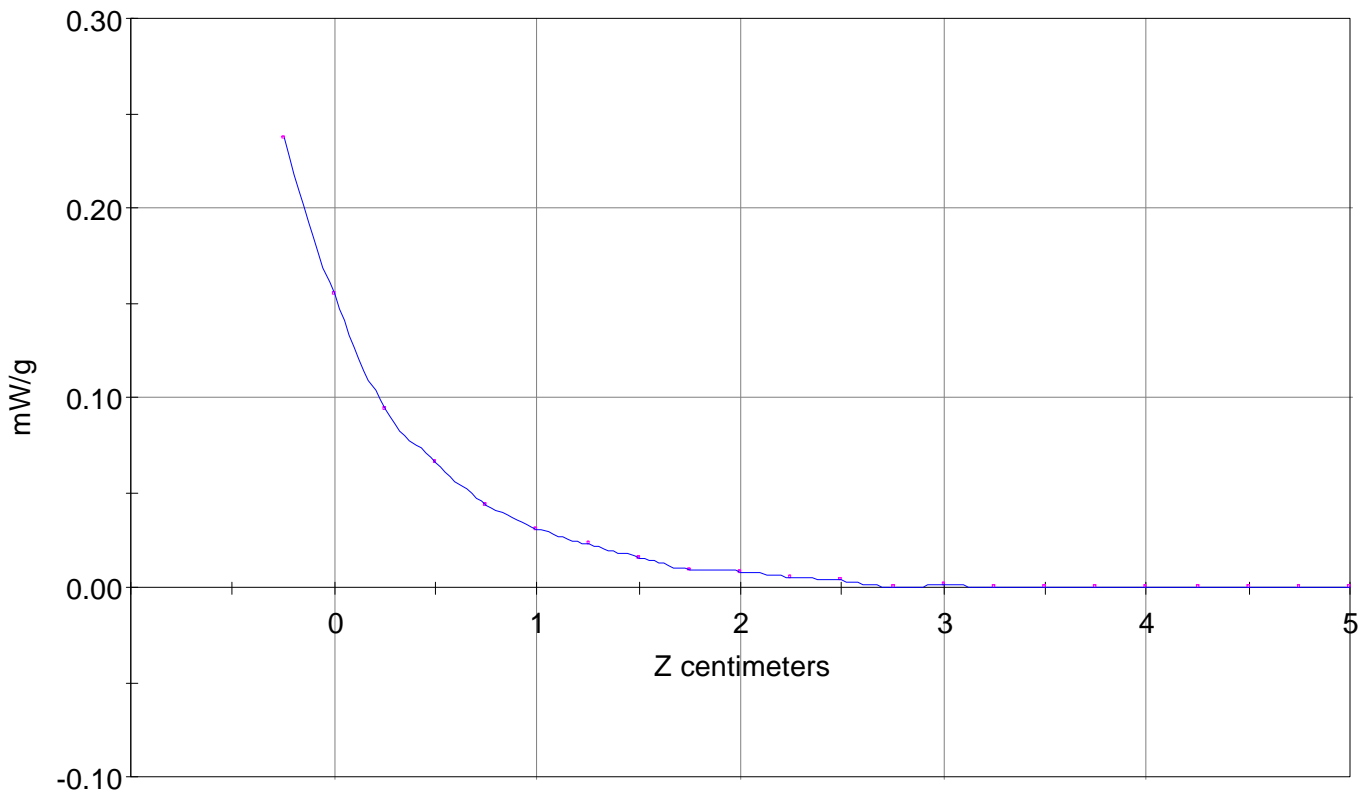
SAR Scan

File : 01091118\_ZOOM

Start : 11-Sep-101 01:45:11 pm End : 11-Sep-101 01:56:42 pm

SANYO/SCP-5150/1;1908.75MHz;W;Helical/In;

Head/Left Ear;ZOOM/SAR;PCTEST/E Field/0 DegreesBrain/40.400/1.620

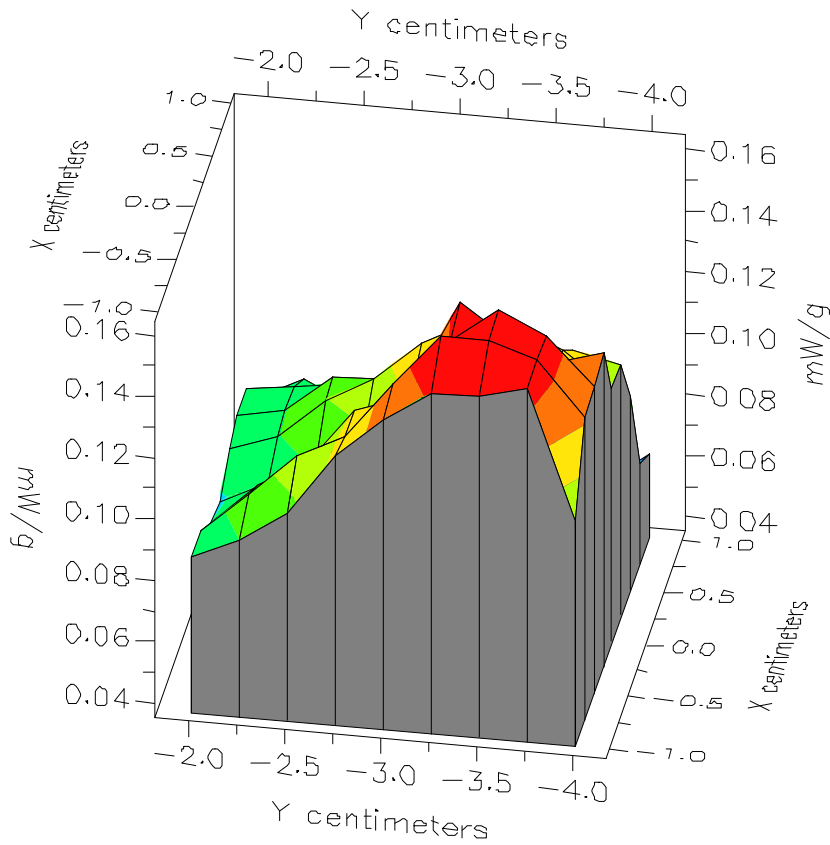


File : 01091118\_ZOOM

Start : 11-Sep-101 01:45:11 pm End : 11-Sep-101 01:56:42 pm

SANYO/SCP-5150/1;1908.75MHz;W;Helical/In;

Head/Left Ear;ZOOM/SAR;PCTEST/E Field/0 DegreesBrain/40.400/1.620

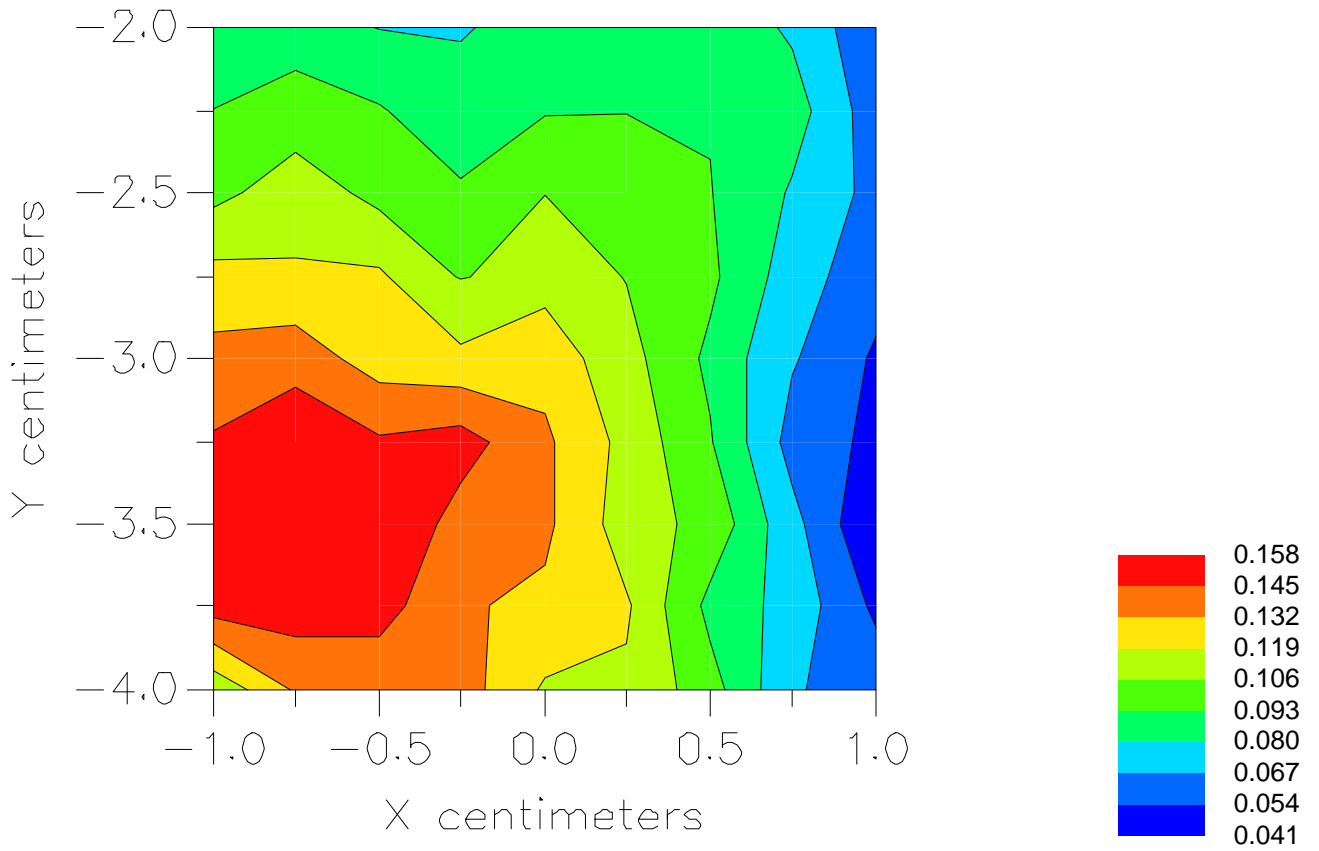


File : 01091118\_ZOOM

Start : 11-Sep-101 01:45:11 pm End : 11-Sep-101 01:56:42 pm

SANYO/SCP-5150/1;1908.75MHz;W;Helical/In;

Head/Left Ear;ZOOM/SAR;PCTEST/E Field/0 DegreesBrain/40.400/1.620



File : c:/idx3/SYSTEM/SARMEAS3/data/Normal/01091116\_ZOOM.VLT  
Start : 11-Sep-101 01:17:33 pm End : 11-Sep-101 01:26:49 pm

Radio Type : SANYO  
Model Number : SCP-5150  
Serial Number : 1  
Frequency : 1908.75 MHz  
Peak Trans. Pwr : 0.320 W  
Start Trans. Pwr : 0.320 W  
Antenna Type : Helical  
Antenna Posn. : Out  
Phantom Type : Head  
Phantom Posn. : Left Ear  
Scan Type : ZOOM/SAR  
Probe Name : PCTEST  
Field Type : E Field  
Orientation : 0 Degrees

Mixture Type = Brain  
Mixture Dielectric Constant = 40.400  
Mixture Conductivity = 1.620

Comment :  
SANYO DUAL-BAND PHONE - PCS MODE  
CH 1175 Conducted 25.0 dBm  
SANYO DUAL-BAND PHONE - TILT

Robot : PCTEST

Probe Offset = 0.25 cm  
Sensor Factor = 0.0108  
Conversion Factor = 1.201

PCTEST Amplifier Channel Settings : 0.245 0.231 0.224

Max Location : X = 0.500, Y = 0.500, Z = 0.000 (cm) Value = 0.938

Measured Values (volts) =  
9.274E-004 5.453E-004 4.092E-004 2.731E-004 1.781E-004 1.451E-004  
6.138E-005 3.731E-005 1.630E-005 7.552E-006 0.000E+000 0.000E+000  
0.000E+000 0.000E+000 0.000E+000 7.261E-006 0.000E+000 0.000E+000  
0.000E+000 0.000E+000 0.000E+000

Calc. Voltage @ Surface (Vs) = 0.0014

Voltage @ 1.00 cm (Vt) = 0.0003

Ave. Voltage (Vs+Vt)/2 = 0.0008

Ave. SAR over 1 g (mW/g) = 0.0934

File : c:/idx3/SYSTEM/SARMEAS3/data/Normal/01091112\_ZOOM.VLT  
Start : 11-Sep-101 12:20:12 pm End : 11-Sep-101 12:26:46 pm

Radio Type : SANYO  
Model Number : SCP-5150  
Serial Number : 1  
Frequency : 1908.75 MHz  
Peak Trans. Pwr : 0.320 W  
Start Trans. Pwr : 0.320 W  
Antenna Type : Helical  
Antenna Posn. : In  
Phantom Type : Head  
Phantom Posn. : Left Ear  
Scan Type : ZOOM/SAR  
Probe Name : PCTEST  
Field Type : E Field  
Orientation : 0 Degrees

Mixture Type = Brain  
Mixture Dielectric Constant = 40.400  
Mixture Conductivity = 1.620

Comment :  
SANYO DUAL-BAND PHONE - PCS MODE  
CH 1175 Conducted 25.0 dBm  
SANYO DUAL-BAND PHONE - BODY SAR (EXT BATT)

Robot : PCTEST

Probe Offset = 0.25 cm  
Sensor Factor = 0.0108  
Conversion Factor = 1.201

PCTEST Amplifier Channel Settings : 0.245 0.231 0.224

Max Location : X = 2.500, Y = -4.000, Z = 0.000 (cm) Value = 11.461

Measured Values (volts) =  
1.179E-002 7.717E-003 5.583E-003 4.417E-003 3.198E-003 2.322E-003  
1.677E-003 1.227E-003 7.910E-004 5.657E-004 3.820E-004 2.165E-004  
1.347E-004 7.357E-005 1.458E-005 1.608E-005 2.467E-006 2.916E-006  
2.916E-006 0.000E+000 0.000E+000

Calc. Voltage @ Surface (Vs) = 0.0172

Voltage @ 1.00 cm (Vt) = 0.0044

Ave. Voltage (Vs+Vt)/2 = 0.0108

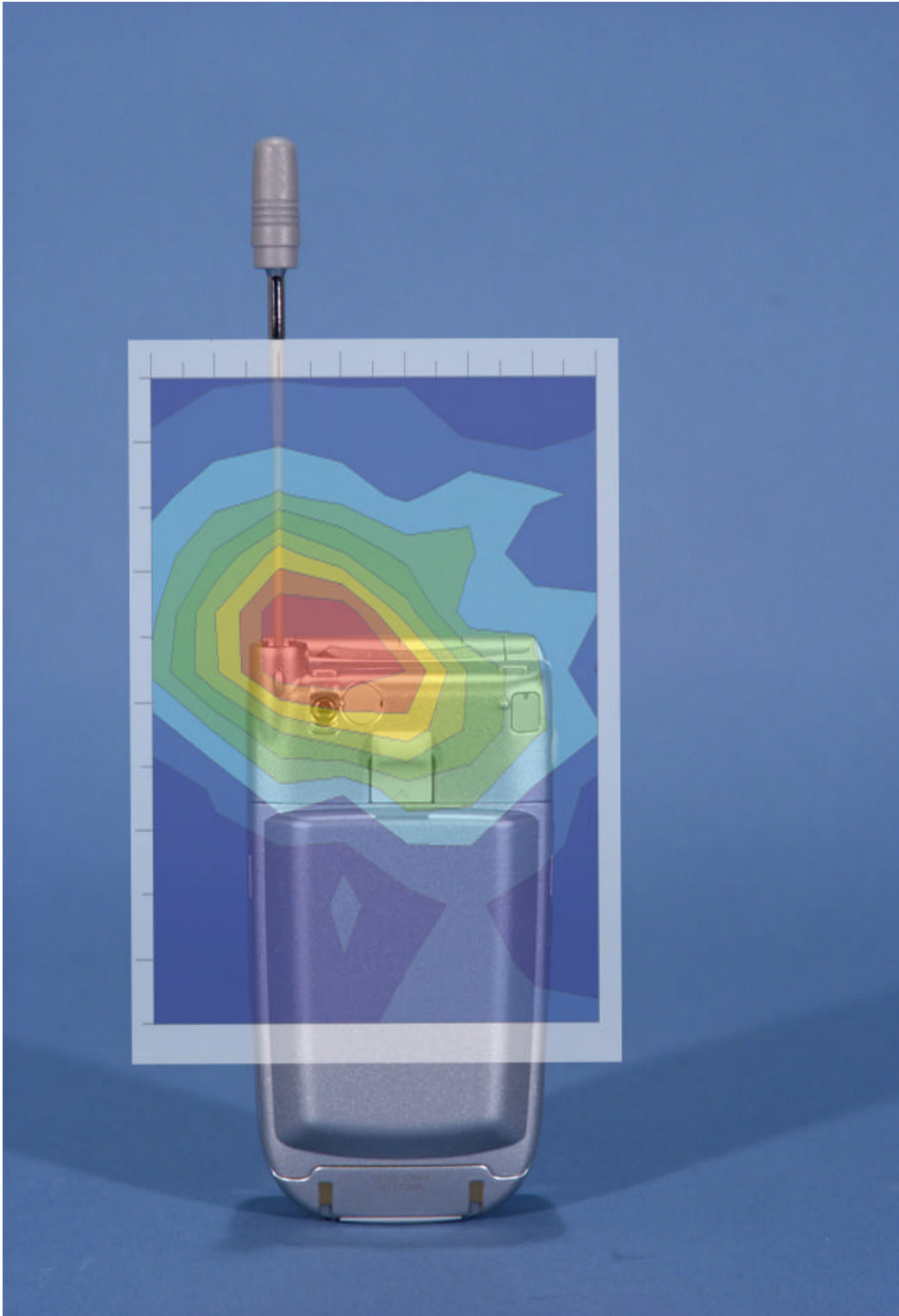
Ave. SAR over 1 g (mW/g) = 1.1993



# Peak SAR Location

---

1800 MHz Body SAR



File : c:/idx3/SYSTEM/SARMEAS3/data/Normal/01091408\_ZOOM.VLT  
Start : 14-Sep-101 10:23:27 am End : 14-Sep-101 10:31:06 am

Radio Type : SANYO  
Model Number : SCP-5150  
Serial Number : 1  
Frequency : 1851.25 MHz  
Peak Trans. Pwr : 0.320 W  
Start Trans. Pwr : 0.320 W  
Antenna Type : Helical  
Antenna Posn. : In  
Phantom Type : Body  
Phantom Posn. : Abdomen  
Scan Type : ZOOM/SAR  
Probe Name : PCTEST  
Field Type : E Field  
Orientation : 0 Degrees

Mixture Type = Muscle  
Mixture Dielectric Constant = 54.200  
Mixture Conductivity = 1.450

Comment :  
SANYO DUAL-BAND PHONE - PCS MODE  
CH 0025 Conducted 25.0 dBm  
SANYO DUAL-BAND PHONE - BODY SAR

Robot : PCTEST

Probe Offset = 0.25 cm  
Sensor Factor = 0.0108  
Conversion Factor = 1.378

PCTEST Amplifier Channel Settings : 0.245 0.231 0.224

Max Location : X = -2.000, Y = -2.500, Z = 0.000 (cm) Value = 7.094

Measured Values (volts) =  
6.102E-003 6.258E-003 4.438E-003 3.382E-003 2.399E-003 2.025E-003  
1.206E-003 8.734E-004 1.027E-003 7.859E-004 5.646E-004 4.897E-004  
3.667E-004 0.000E+000 1.990E-004 1.947E-004 1.547E-004 8.661E-005  
7.701E-006 2.982E-005 6.839E-005

Calc. Voltage @ Surface (Vs) = 0.0073

Voltage @ 1.00 cm (Vt) = 0.0034

Ave. Voltage (Vs+Vt)/2 = 0.0053

Ave. SAR over 1 g (mW/g) = 0.6800

File : c:/idx3/SYSTEM/SARMEAS3/data/Normal/01091403\_ZOOM.VLT  
Start : 14-Sep-101 10:08:02 am End : 14-Sep-101 10:20:10 am

Radio Type : SANYO  
Model Number : SCP-5150  
Serial Number : 1  
Frequency : 1851.25 MHz  
Peak Trans. Pwr : 0.320 W  
Start Trans. Pwr : 0.320 W  
Antenna Type : Helical  
Antenna Posn. : Out  
Phantom Type : Body  
Phantom Posn. : Abdomen  
Scan Type : ZOOM/SAR  
Probe Name : PCTEST  
Field Type : E Field  
Orientation : 0 Degrees

Mixture Type = Muscle  
Mixture Dielectric Constant = 54.200  
Mixture Conductivity = 1.450

Comment :  
SANYO DUAL-BAND PHONE - PCS MODE  
CH 0025 Conducted 25.0 dBm  
SANYO DUAL-BAND PHONE - BODY SAR

Robot : PCTEST

Probe Offset = 0.25 cm  
Sensor Factor = 0.0108  
Conversion Factor = 1.378

PCTEST Amplifier Channel Settings : 0.245 0.231 0.224

Max Location : X = -2.750, Y = -3.000, Z = 0.000 (cm) Value = 8.608

Measured Values (volts) =  
8.376E-003 8.302E-003 6.361E-003 4.737E-003 3.798E-003 3.246E-003  
2.732E-003 2.089E-003 1.606E-003 1.356E-003 1.262E-003 9.483E-004  
6.431E-004 4.543E-004 2.132E-004 3.185E-004 2.056E-004 0.000E+000  
3.940E-005 1.918E-004 2.212E-004

Calc. Voltage @ Surface (Vs) = 0.0097

Voltage @ 1.00 cm (Vt) = 0.0047

Ave. Voltage (Vs+Vt)/2 = 0.0072

Ave. SAR over 1 g (mW/g) = 0.9205

File : c:/idx3/SYSTEM/SARMEAS3/data/Normal/01091411\_ZOOM.VLT  
Start : 14-Sep-101 10:53:15 am End : 14-Sep-101 11:00:57 am

Radio Type : SANYO  
Model Number : SCP-5150  
Serial Number : 1  
Frequency : 1880.00 MHz  
Peak Trans. Pwr : 0.320 W  
Start Trans. Pwr : 0.320 W  
Antenna Type : Helical  
Antenna Posn. : In  
Phantom Type : Body  
Phantom Posn. : Abdomen  
Scan Type : ZOOM/SAR  
Probe Name : PCTEST  
Field Type : E Field  
Orientation : 0 Degrees

Mixture Type = Muscle  
Mixture Dielectric Constant = 54.200  
Mixture Conductivity = 1.450

Comment :  
SANYO DUAL-BAND PHONE - PCS MODE  
CH 0600 Conducted 25.0 dBm  
SANYO DUAL-BAND PHONE - BODY SAR

Robot : PCTEST

Probe Offset = 0.25 cm  
Sensor Factor = 0.0108  
Conversion Factor = 1.378

PCTEST Amplifier Channel Settings : 0.245 0.231 0.224

Max Location : X = -2.000, Y = -3.000, Z = 0.000 (cm) Value = 9.568

Measured Values (volts) =  
8.062E-003 8.120E-003 5.577E-003 3.918E-003 2.577E-003 2.295E-003  
1.980E-003 1.502E-003 1.102E-003 8.459E-004 7.176E-004 5.504E-004  
4.061E-004 2.947E-004 1.778E-004 2.435E-004 1.478E-004 5.510E-005  
0.000E+000 2.887E-005 6.079E-005

Calc. Voltage @ Surface (Vs) = 0.0099

Voltage @ 1.00 cm (Vt) = 0.0039

Ave. Voltage (Vs+Vt)/2 = 0.0069

Ave. SAR over 1 g (mW/g) = 0.8797

File : c:/idx3/SYSTEM/SARMEAS3/data/Normal/01091410\_ZOOM.VLT  
Start : 14-Sep-101 10:41:06 am End : 14-Sep-101 10:52:37 am

Radio Type : SANYO  
Model Number : SCP-5150  
Serial Number : 1  
Frequency : 1880.00 MHz  
Peak Trans. Pwr : 0.320 W  
Start Trans. Pwr : 0.320 W  
Antenna Type : Helical  
Antenna Posn. : Out  
Phantom Type : Body  
Phantom Posn. : Abdomen  
Scan Type : ZOOM/SAR  
Probe Name : PCTEST  
Field Type : E Field  
Orientation : 0 Degrees

Mixture Type = Muscle  
Mixture Dielectric Constant = 54.200  
Mixture Conductivity = 1.450

Comment :  
SANYO DUAL-BAND PHONE - PCS MODE  
CH 0600 Conducted 25.0 dBm  
SANYO DUAL-BAND PHONE - BODY SAR

Robot : PCTEST

Probe Offset = 0.25 cm  
Sensor Factor = 0.0108  
Conversion Factor = 1.378

PCTEST Amplifier Channel Settings : 0.245 0.231 0.224

Max Location : X = -3.000, Y = -2.750, Z = 0.000 (cm) Value = 9.641

Measured Values (volts) =  
9.405E-003 8.914E-003 6.501E-003 4.732E-003 3.755E-003 2.897E-003  
2.303E-003 2.027E-003 1.583E-003 1.366E-003 1.133E-003 8.882E-004  
5.824E-004 4.621E-004 5.227E-004 4.439E-004 2.178E-004 5.668E-005  
1.775E-004 3.196E-004 3.182E-004

Calc. Voltage @ Surface (Vs) = 0.0114

Voltage @ 1.00 cm (Vt) = 0.0047

Ave. Voltage (Vs+Vt)/2 = 0.0081

Ave. SAR over 1 g (mW/g) = 1.0297

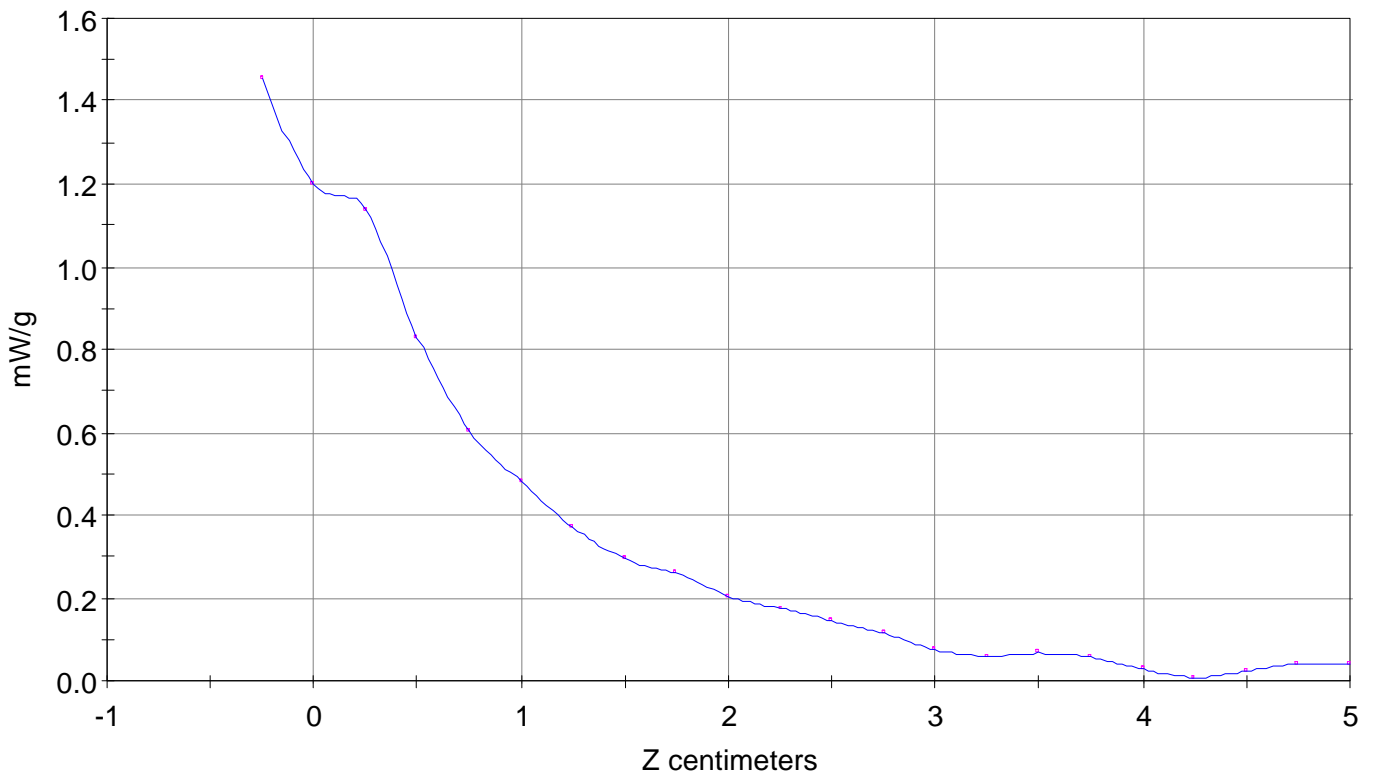
### SAR Scan

File : 01091410\_ZOOM

Start : 14-Sep-101 10:41:06 am End : 14-Sep-101 10:52:37 am

SANYO/SCP-5150/1;1880.00MHz;W;Helical/Out;

Body/Abdomen;ZOOM/SAR;PCTEST/E Field/0 DegreesMuscle/54.200/1.450

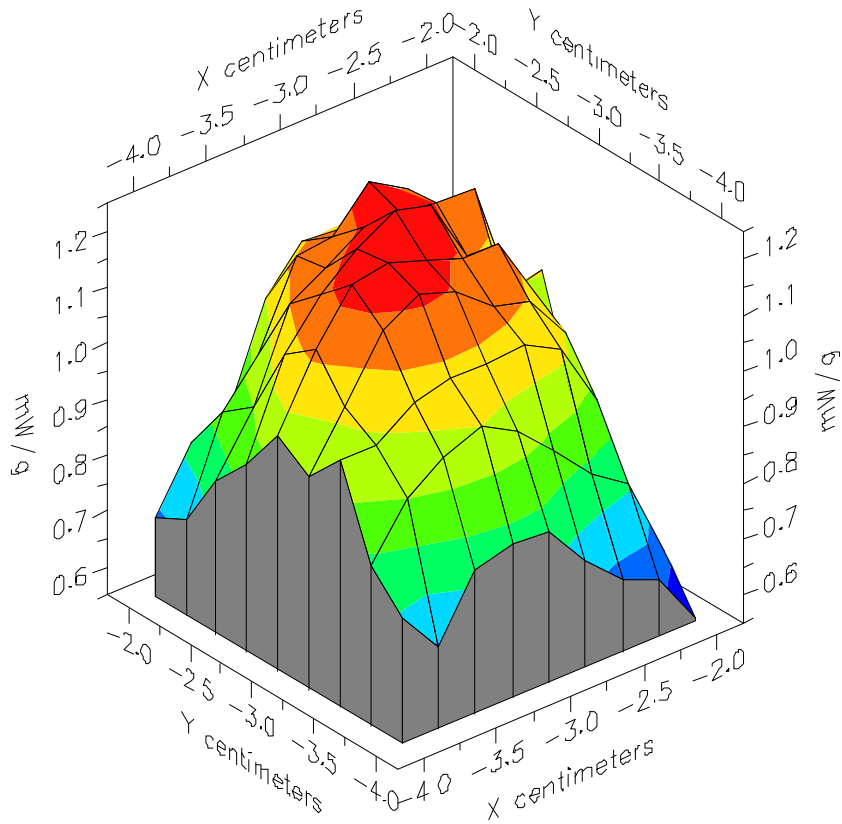


File : 01091410\_ZOOM

Start : 14-Sep-101 10:41:06 am End : 14-Sep-101 10:52:37 am

SANYO/SCP-5150/1;1880.00MHz;W;Helical/Out;

Body/Abdomen;ZOOM/SAR;PCTEST/E Field/0 DegreesMuscle/54.200/1.450

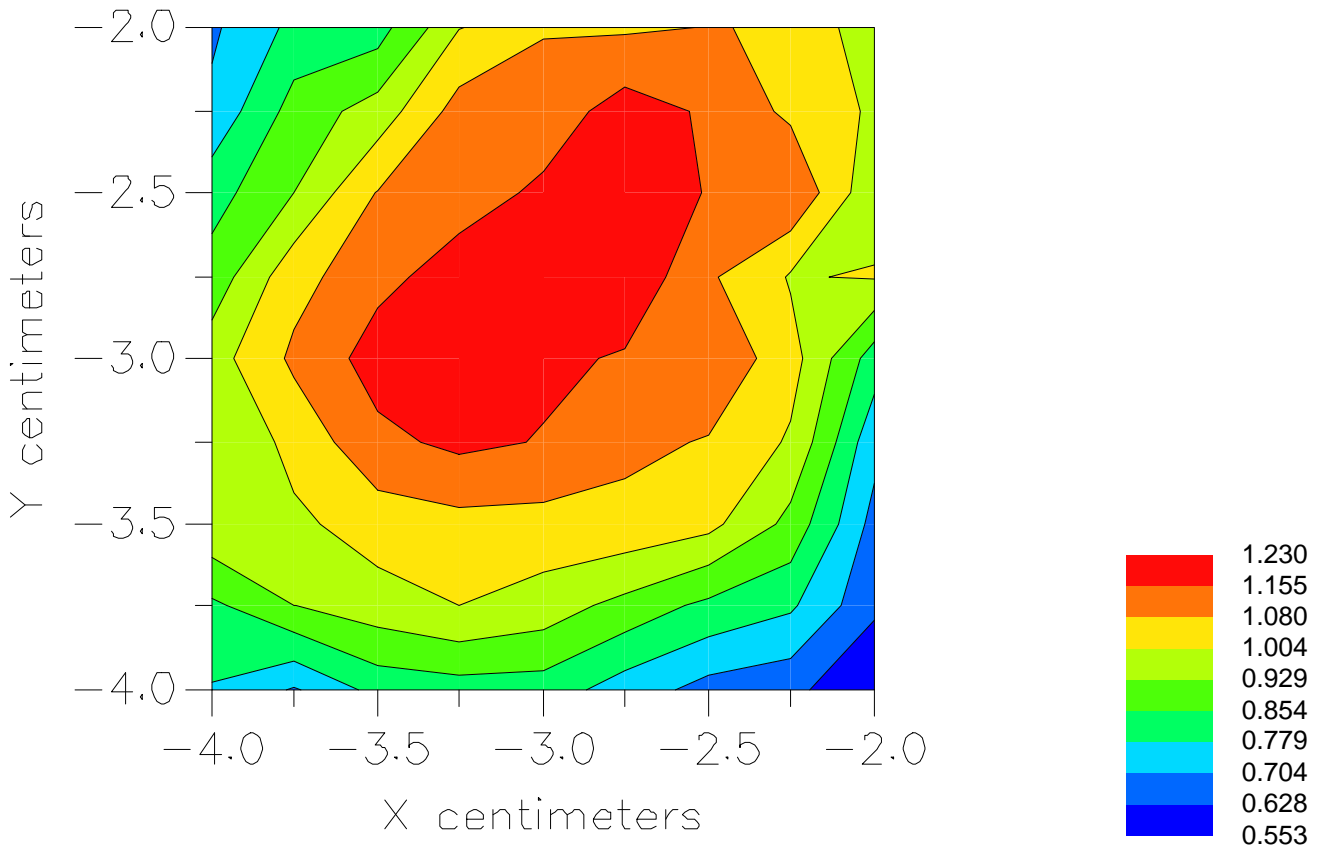


File : 01091410\_ZOOM

Start : 14-Sep-101 10:41:06 am End : 14-Sep-101 10:52:37 am

SANYO/SCP-5150/1;1880.00MHz;W;Helical/Out;

Body/Abdomen;ZOOM/SAR;PCTEST/E Field/0 DegreesMuscle/54.200/1.450





File : c:/idx3/SYSTEM/SARMEAS3/data/Normal/01091419\_ZOOM.VLT  
Start : 14-Sep-101 11:30:07 am End : 14-Sep-101 11:31:22 am

Radio Type : SANYO  
Model Number : SCP-5150  
Serial Number : 1  
Frequency : 1908.75 MHz  
Peak Trans. Pwr : 0.320 W  
Start Trans. Pwr : 0.320 W  
Antenna Type : Helical  
Antenna Posn. : In  
Phantom Type : Body  
Phantom Posn. : Abdomen  
Scan Type : SAR  
Probe Name : PCTEST  
Field Type : E Field  
Orientation : 0 Degrees

Mixture Type = Muscle  
Mixture Dielectric Constant = 54.200  
Mixture Conductivity = 1.450

Comment :  
SANYO DUAL-BAND PHONE - PCS MODE  
CH 1175 Conducted 25.0 dBm  
SANYO DUAL-BAND PHONE - BODY SAR

Robot : PCTEST

Probe Offset = 0.25 cm  
Sensor Factor = 0.0108  
Conversion Factor = 1.378

PCTEST Amplifier Channel Settings : 0.245 0.231 0.224

Max Location : X = -2.000, Y = -2.500, Z = 0.000 (cm) Value = 10.193

Measured Values (volts) =  
8.313E-003 6.687E-003 4.946E-003 3.958E-003 3.255E-003 2.527E-003  
1.998E-003 1.652E-003 1.327E-003 9.666E-004 7.107E-004 5.940E-004  
4.233E-004 2.357E-004 1.612E-004 2.065E-004 2.228E-004 7.843E-005  
0.000E+000 0.000E+000 1.107E-004

Calc. Voltage @ Surface (Vs) = 0.0108

Voltage @ 1.00 cm (Vt) = 0.0040

Ave. Voltage (Vs+Vt)/2 = 0.0074

Ave. SAR over 1 g (mW/g) = 0.9407

File : c:/idx3/SYSTEM/SARMEAS3/data/Normal/01091413\_ZOOM.VLT  
Start : 14-Sep-101 11:11:18 am End : 14-Sep-101 11:13:10 am

Radio Type : SANYO  
Model Number : SCP-5150  
Serial Number : 1  
Frequency : 1908.75 MHz  
Peak Trans. Pwr : 0.320 W  
Start Trans. Pwr : 0.320 W  
Antenna Type : Helical  
Antenna Posn. : Out  
Phantom Type : Body  
Phantom Posn. : Abdomen  
Scan Type : SAR  
Probe Name : PCTEST  
Field Type : E Field  
Orientation : 0 Degrees

Mixture Type = Muscle  
Mixture Dielectric Constant = 54.200  
Mixture Conductivity = 1.450

Comment :  
SANYO DUAL-BAND PHONE - PCS MODE  
CH 1175 Conducted 25.0 dBm  
SANYO DUAL-BAND PHONE - BODY SAR

Robot : PCTEST

Probe Offset = 0.25 cm  
Sensor Factor = 0.0108  
Conversion Factor = 1.378

PCTEST Amplifier Channel Settings : 0.245 0.231 0.224

Max Location : X = -2.500, Y = -2.500, Z = 0.000 (cm) Value = 7.927

Measured Values (volts) =  
6.486E-003 4.911E-003 3.682E-003 2.926E-003 2.509E-003 2.056E-003  
1.698E-003 1.268E-003 9.857E-004 7.922E-004 7.452E-004 5.492E-004  
3.779E-004 2.897E-004 3.287E-004 3.263E-004 1.617E-004 1.376E-005  
1.449E-004 2.425E-004 2.013E-004

Calc. Voltage @ Surface (Vs) = 0.0086

Voltage @ 1.00 cm (Vt) = 0.0029

Ave. Voltage (Vs+Vt)/2 = 0.0058

Ave. SAR over 1 g (mW/g) = 0.7358

File : c:/idx3/SYSTEM/SARMEAS3/data/Normal/01091428\_ZOOM.VLT  
Start : 14-Sep-101 11:42:21 am End : 14-Sep-101 11:43:14 am

Radio Type : SANYO  
Model Number : SCP-5150  
Serial Number : 1  
Frequency : 1880.00 MHz  
Peak Trans. Pwr : 0.320 W  
Start Trans. Pwr : 0.320 W  
Antenna Type : Helical  
Antenna Posn. : Out  
Phantom Type : Body  
Phantom Posn. : Abdomen  
Scan Type : ZOOM/SAR  
Probe Name : PCTEST  
Field Type : E Field  
Orientation : 0 Degrees

Mixture Type = Muscle  
Mixture Dielectric Constant = 54.200  
Mixture Conductivity = 1.450

Comment :  
SANYO DUAL-BAND PHONE - PCS MODE  
CH 600 Conducted 25.0 dBm  
SANYO DUAL-BAND PHONE - BODY SAR EXT BAT

Robot : PCTEST

Probe Offset = 0.25 cm  
Sensor Factor = 0.0108  
Conversion Factor = 1.378

PCTEST Amplifier Channel Settings : 0.245 0.231 0.224

Max Location : X = -2.000, Y = -2.500, Z = 0.000 (cm) Value = 10.193

Measured Values (volts) =  
8.059E-003 7.542E-003 5.358E-003 4.342E-003 3.676E-003 3.066E-003  
2.557E-003 2.149E-003 1.663E-003 1.288E-003 1.087E-003 1.024E-003  
7.964E-004 5.242E-004 4.229E-004 4.763E-004 4.197E-004 2.542E-004  
1.124E-004 1.783E-004 3.694E-004

Calc. Voltage @ Surface (Vs) = 0.0100

Voltage @ 1.00 cm (Vt) = 0.0043

Ave. Voltage (Vs+Vt)/2 = 0.0072

Ave. SAR over 1 g (mW/g) = 0.9135

# Peak SAR Location

---

## 800 MHz Head SAR



File : c:/idx3/SYSTEM/SARMEAS3/data/Normal/01091303\_ZOOM.VLT  
Start : 13-Sep-101 09:48:37 am End : 13-Sep-101 09:54:26 am

Radio Type : SANYO  
Model Number : SCP-5150  
Serial Number : 1  
Frequency : 824.04 MHz  
Peak Trans. Pwr : 0.275 W  
Start Trans. Pwr : 0.275 W  
Antenna Type : Helical  
Antenna Posn. : In  
Phantom Type : Head  
Phantom Posn. : Left Ear  
Scan Type : ZOOM/SAR  
Probe Name : PCTEST  
Field Type : E Field  
Orientation : 0 Degrees

Mixture Type = Brain  
Mixture Dielectric Constant = 41.500  
Mixture Conductivity = 0.900

Comment :  
SANYO DUAL-BAND PHONE - AMPS MODE  
CH 0991 Conducted 24.4 dBm  
SANYO DUAL-BAND PHONE

Robot : PCTEST

Probe Offset = 0.25 cm  
Sensor Factor = 0.0108  
Conversion Factor = 0.788

PCTEST Amplifier Channel Settings : 0.166 0.135 0.132

Max Location : X = 3.500, Y = -3.750, Z = 0.000 (cm) Value = 20.764

Measured Values (volts) =  
2.054E-002 1.785E-002 1.494E-002 1.208E-002 1.011E-002 8.374E-003  
7.063E-003 5.900E-003 4.970E-003 4.099E-003 3.500E-003 3.005E-003  
2.545E-003 2.186E-003 1.810E-003 1.538E-003 1.368E-003 1.194E-003  
1.062E-003 9.408E-004 8.596E-004

Calc. Voltage @ Surface (Vs) = 0.0241

Voltage @ 1.00 cm (Vt) = 0.0121

Ave. Voltage (Vs+Vt)/2 = 0.0181

Ave. SAR over 1 g (mW/g) = 1.3196

File : c:/idx3/SYSTEM/SARMEAS3/data/Normal/01091302\_ZOOM.VLT  
Start : 13-Sep-101 09:39:16 am End : 13-Sep-101 09:45:05 am

Radio Type : SANYO  
Model Number : SCP-5150  
Serial Number : 1  
Frequency : 824.04 MHz  
Peak Trans. Pwr : 0.275 W  
Start Trans. Pwr : 0.275 W  
Antenna Type : Helical  
Antenna Posn. : Out  
Phantom Type : Head  
Phantom Posn. : Left Ear  
Scan Type : ZOOM/SAR  
Probe Name : PCTEST  
Field Type : E Field  
Orientation : 0 Degrees

Mixture Type = Brain  
Mixture Dielectric Constant = 41.500  
Mixture Conductivity = 0.900

Comment :  
SANYO DUAL-BAND PHONE - AMPS MODE  
CH 0991 Conducted 24.4 dBm  
SANYO DUAL-BAND PHONE

Robot : PCTEST

Probe Offset = 0.25 cm  
Sensor Factor = 0.0108  
Conversion Factor = 0.788

PCTEST Amplifier Channel Settings : 0.166 0.135 0.132

Max Location : X = 3.500, Y = -3.750, Z = 0.000 (cm) Value = 20.773

Measured Values (volts) =  
2.004E-002 1.695E-002 1.436E-002 1.194E-002 9.799E-003 8.227E-003  
6.966E-003 5.683E-003 4.875E-003 4.050E-003 3.495E-003 3.053E-003  
2.528E-003 2.180E-003 1.841E-003 1.539E-003 1.440E-003 1.263E-003  
1.108E-003 9.770E-004 8.670E-004

Calc. Voltage @ Surface (Vs) = 0.0237

Voltage @ 1.00 cm (Vt) = 0.0119

Ave. Voltage (Vs+Vt)/2 = 0.0178

Ave. SAR over 1 g (mW/g) = 1.2994

File : c:/idx3/SYSTEM/SARMEAS3/data/Normal/01091304\_ZOOM.VLT  
Start : 13-Sep-101 09:55:26 am End : 13-Sep-101 10:01:31 am

Radio Type : SANYO  
Model Number : SCP-5150  
Serial Number : 1  
Frequency : 836.49 MHz  
Peak Trans. Pwr : 0.275 W  
Start Trans. Pwr : 0.275 W  
Antenna Type : Helical  
Antenna Posn. : In  
Phantom Type : Head  
Phantom Posn. : Left Ear  
Scan Type : ZOOM/SAR  
Probe Name : PCTEST  
Field Type : E Field  
Orientation : 0 Degrees

Mixture Type = Brain  
Mixture Dielectric Constant = 41.500  
Mixture Conductivity = 0.900

Comment :  
SANYO DUAL-BAND PHONE - AMPS MODE  
CH 0383 Conducted 24.4 dBm  
SANYO DUAL-BAND PHONE

Robot : PCTEST

Probe Offset = 0.25 cm  
Sensor Factor = 0.0108  
Conversion Factor = 0.788

PCTEST Amplifier Channel Settings : 0.166 0.135 0.132

Max Location : X = 3.500, Y = -3.750, Z = 0.000 (cm) Value = 21.113

Measured Values (volts) =  
2.080E-002 1.863E-002 1.543E-002 1.276E-002 1.070E-002 8.714E-003  
7.291E-003 6.138E-003 5.193E-003 4.310E-003 3.701E-003 3.152E-003  
2.626E-003 2.263E-003 1.866E-003 1.592E-003 1.358E-003 1.201E-003  
1.066E-003 9.503E-004 8.449E-004

Calc. Voltage @ Surface (Vs) = 0.0242

Voltage @ 1.00 cm (Vt) = 0.0128

Ave. Voltage (Vs+Vt)/2 = 0.0185

Ave. SAR over 1 g (mW/g) = 1.3472

File : c:/idx3/SYSTEM/SARMEAS3/data/Normal/01091305\_ZOOM.VLT  
Start : 13-Sep-101 10:07:13 am End : 13-Sep-101 10:13:02 am

Radio Type : SANYO  
Model Number : SCP-5150  
Serial Number : 1  
Frequency : 836.49 MHz  
Peak Trans. Pwr : 0.275 W  
Start Trans. Pwr : 0.275 W  
Antenna Type : Helical  
Antenna Posn. : Out  
Phantom Type : Head  
Phantom Posn. : Left Ear  
Scan Type : ZOOM/SAR  
Probe Name : PCTEST  
Field Type : E Field  
Orientation : 0 Degrees

Mixture Type = Brain  
Mixture Dielectric Constant = 41.500  
Mixture Conductivity = 0.900

Comment :  
SANYO DUAL-BAND PHONE - AMPS MODE  
CH 0383 Conducted 24.4 dBm  
SANYO DUAL-BAND PHONE

Robot : PCTEST

Probe Offset = 0.25 cm  
Sensor Factor = 0.0108  
Conversion Factor = 0.788

PCTEST Amplifier Channel Settings : 0.166 0.135 0.132

Max Location : X = 3.500, Y = -3.750, Z = 0.000 (cm) Value = 18.514

Measured Values (volts) =  
1.811E-002 1.662E-002 1.366E-002 1.157E-002 9.881E-003 8.421E-003  
7.336E-003 6.311E-003 5.407E-003 4.830E-003 4.278E-003 3.865E-003  
3.530E-003 3.277E-003 2.899E-003 2.744E-003 2.563E-003 2.382E-003  
2.259E-003 2.148E-003 2.106E-003

Calc. Voltage @ Surface (Vs) = 0.0209

Voltage @ 1.00 cm (Vt) = 0.0116

Ave. Voltage (Vs+Vt)/2 = 0.0162

Ave. SAR over 1 g (mW/g) = 1.1842



File : c:/idx3/SYSTEM/SARMEAS3/data/Normal/01091301\_ZOOM.VLT  
Start : 13-Sep-101 09:30:14 am End : 13-Sep-101 09:36:02 am

Radio Type : SANYO  
Model Number : SCP-5150  
Serial Number : 1  
Frequency : 848.97 MHz  
Peak Trans. Pwr : 0.275 W  
Start Trans. Pwr : 0.275 W  
Antenna Type : Helical  
Antenna Posn. : In  
Phantom Type : Head  
Phantom Posn. : Left Ear  
Scan Type : ZOOM/SAR  
Probe Name : PCTEST  
Field Type : E Field  
Orientation : 0 Degrees

Mixture Type = Brain  
Mixture Dielectric Constant = 41.500  
Mixture Conductivity = 0.900

Comment :  
SANYO DUAL-BAND PHONE - AMPS MODE  
CH 0799 Conducted 24.4 dBm  
SANYO DUAL-BAND PHONE

Robot : PCTEST

Probe Offset = 0.25 cm  
Sensor Factor = 0.0108  
Conversion Factor = 0.788

PCTEST Amplifier Channel Settings : 0.166 0.135 0.132

Max Location : X = 3.250, Y = -3.750, Z = 0.000 (cm) Value = 21.275

Measured Values (volts) =  
2.131E-002 1.799E-002 1.509E-002 1.270E-002 1.108E-002 9.074E-003  
7.792E-003 6.588E-003 5.460E-003 4.642E-003 4.016E-003 3.311E-003  
2.826E-003 2.463E-003 2.097E-003 1.748E-003 1.465E-003 1.263E-003  
1.119E-003 1.012E-003 9.121E-004

Calc. Voltage @ Surface (Vs) = 0.0253

Voltage @ 1.00 cm (Vt) = 0.0127

Ave. Voltage (Vs+Vt)/2 = 0.0190

Ave. SAR over 1 g (mW/g) = 1.3873

File : c:/idx3/SYSTEM/SARMEAS3/data/Normal/01091307\_ZOOM.VLT  
Start : 13-Sep-101 10:18:45 am End : 13-Sep-101 10:24:33 am

Radio Type : SANYO  
Model Number : SCP-5150  
Serial Number : 1  
Frequency : 848.97 MHz  
Peak Trans. Pwr : 0.275 W  
Start Trans. Pwr : 0.275 W  
Antenna Type : Helical  
Antenna Posn. : Out  
Phantom Type : Head  
Phantom Posn. : Left Ear  
Scan Type : ZOOM/SAR  
Probe Name : PCTEST  
Field Type : E Field  
Orientation : 0 Degrees

Mixture Type = Brain  
Mixture Dielectric Constant = 41.500  
Mixture Conductivity = 0.900

Comment :  
SANYO DUAL-BAND PHONE - AMPS MODE  
CH 0799 Conducted 24.4 dBm  
SANYO DUAL-BAND PHONE

Robot : PCTEST

Probe Offset = 0.25 cm  
Sensor Factor = 0.0108  
Conversion Factor = 0.788

PCTEST Amplifier Channel Settings : 0.166 0.135 0.132

Max Location : X = 3.500, Y = -3.750, Z = 0.000 (cm) Value = 17.779

Measured Values (volts) =  
1.726E-002 1.593E-002 1.328E-002 1.124E-002 9.452E-003 8.040E-003  
6.909E-003 6.056E-003 5.247E-003 4.668E-003 4.215E-003 3.760E-003  
3.417E-003 3.101E-003 2.850E-003 2.611E-003 2.432E-003 2.316E-003  
2.177E-003 2.125E-003 2.003E-003

Calc. Voltage @ Surface (Vs) = 0.0197

Voltage @ 1.00 cm (Vt) = 0.0112

Ave. Voltage (Vs+Vt)/2 = 0.0155

Ave. SAR over 1 g (mW/g) = 1.1290

File : c:/idx3/SYSTEM/SARMEAS3/data/Normal/01091308\_ZOOM.VLT  
Start : 13-Sep-101 10:27:51 am End : 13-Sep-101 10:33:39 am

Radio Type : SANYO  
Model Number : SCP-5150  
Serial Number : 1  
Frequency : 848.97 MHz  
Peak Trans. Pwr : 0.275 W  
Start Trans. Pwr : 0.275 W  
Antenna Type : Helical  
Antenna Posn. : In  
Phantom Type : Head  
Phantom Posn. : Left Ear  
Scan Type : ZOOM/SAR  
Probe Name : PCTEST  
Field Type : E Field  
Orientation : 0 Degrees

Mixture Type = Brain  
Mixture Dielectric Constant = 41.500  
Mixture Conductivity = 0.900

Comment :  
SANYO DUAL-BAND PHONE - AMPS MODE  
CH 0799 Conducted 24.4 dBm  
SANYO DUAL-BAND PHONE - EXT BATT

Robot : PCTEST

Probe Offset = 0.25 cm  
Sensor Factor = 0.0108  
Conversion Factor = 0.788

PCTEST Amplifier Channel Settings : 0.166 0.135 0.132

Max Location : X = 3.500, Y = -3.750, Z = 0.000 (cm) Value = 20.806

Measured Values (volts) =  
2.014E-002 1.943E-002 1.537E-002 1.284E-002 1.032E-002 8.646E-003  
7.129E-003 5.905E-003 4.894E-003 4.117E-003 3.343E-003 2.869E-003  
2.430E-003 2.085E-003 1.675E-003 1.435E-003 1.253E-003 1.012E-003  
9.050E-004 8.054E-004 7.238E-004

Calc. Voltage @ Surface (Vs) = 0.0232

Voltage @ 1.00 cm (Vt) = 0.0128

Ave. Voltage (Vs+Vt)/2 = 0.0180

Ave. SAR over 1 g (mW/g) = 1.3135

File : c:/idx3/SYSTEM/SARMEAS3/data/Normal/01091309\_ZOOM.VLT  
Start : 13-Sep-101 10:52:19 am End : 13-Sep-101 10:58:08 am

Radio Type : SANYO  
Model Number : SCP-5150  
Serial Number : 1  
Frequency : 848.97 MHz  
Peak Trans. Pwr : 0.275 W  
Start Trans. Pwr : 0.275 W  
Antenna Type : Helical  
Antenna Posn. : In  
Phantom Type : Head  
Phantom Posn. : Left Ear  
Scan Type : ZOOM/SAR  
Probe Name : PCTEST  
Field Type : E Field  
Orientation : 0 Degrees

Mixture Type = Brain  
Mixture Dielectric Constant = 41.500  
Mixture Conductivity = 0.900

Comment :  
SANYO DUAL-BAND PHONE - AMPS MODE  
CH 0799 Conducted 24.4 dBm  
SANYO DUAL-BAND PHONE - TILT

Robot : PCTEST

Probe Offset = 0.25 cm  
Sensor Factor = 0.0108  
Conversion Factor = 0.788

PCTEST Amplifier Channel Settings : 0.166 0.135 0.132

Max Location : X = 3.250, Y = -4.000, Z = 0.000 (cm) Value = 7.065

Measured Values (volts) =  
7.058E-003 5.996E-003 4.890E-003 4.190E-003 3.479E-003 2.971E-003  
2.569E-003 2.145E-003 1.796E-003 1.547E-003 1.328E-003 1.081E-003  
9.410E-004 7.822E-004 6.662E-004 5.882E-004 5.227E-004 4.952E-004  
4.144E-004 3.302E-004 3.146E-004

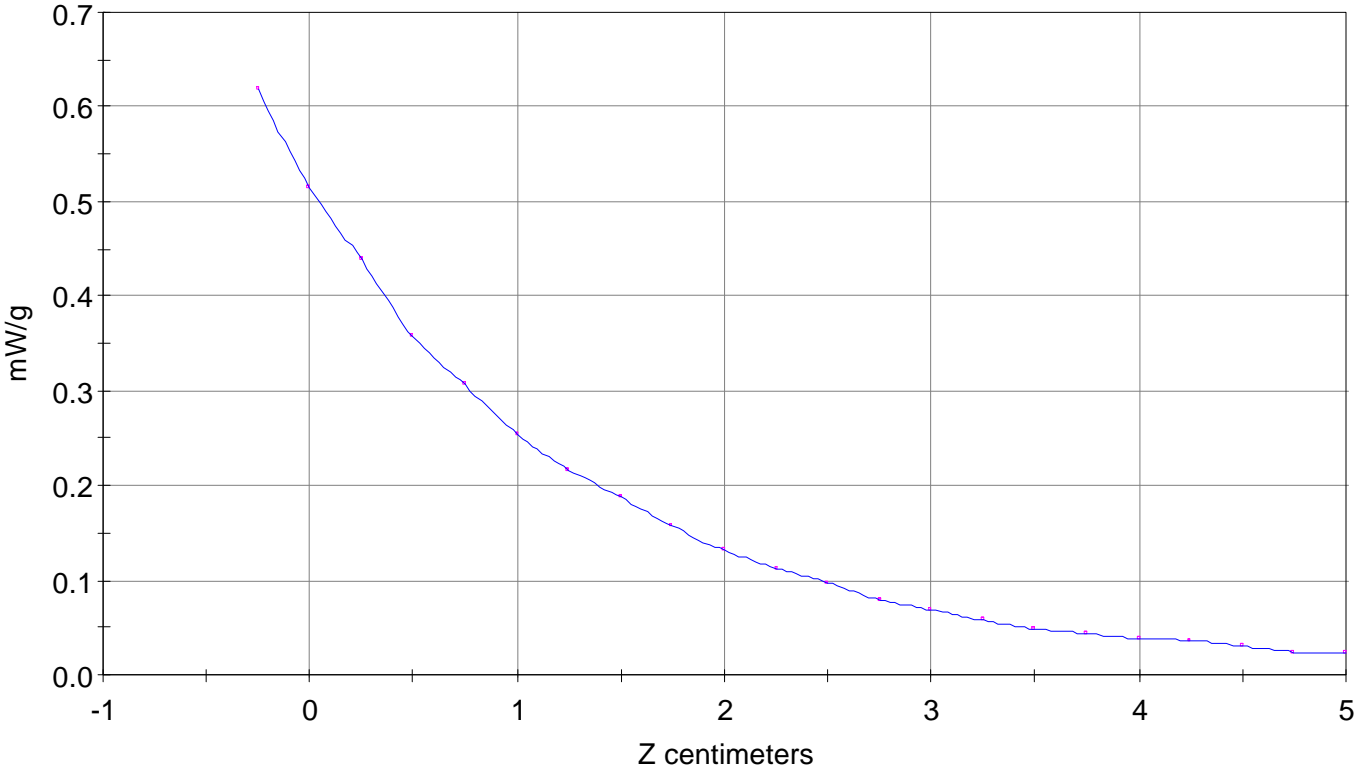
Calc. Voltage @ Surface (Vs) = 0.0085

Voltage @ 1.00 cm (Vt) = 0.0042

Ave. Voltage (Vs+Vt)/2 = 0.0063

Ave. SAR over 1 g (mW/g) = 0.4622

SAR Scan  
File : 01091309\_ZOOM  
Start : 13-Sep-101 10:52:19 am End : 13-Sep-101 10:58:08 am  
SANYO/SCP-5150/1;848.97MHz;W;Helical/In;  
Head/Left Ear;ZOOM/SAR;PCTEST/E Field/0 DegreesBrain/41.500/0.900

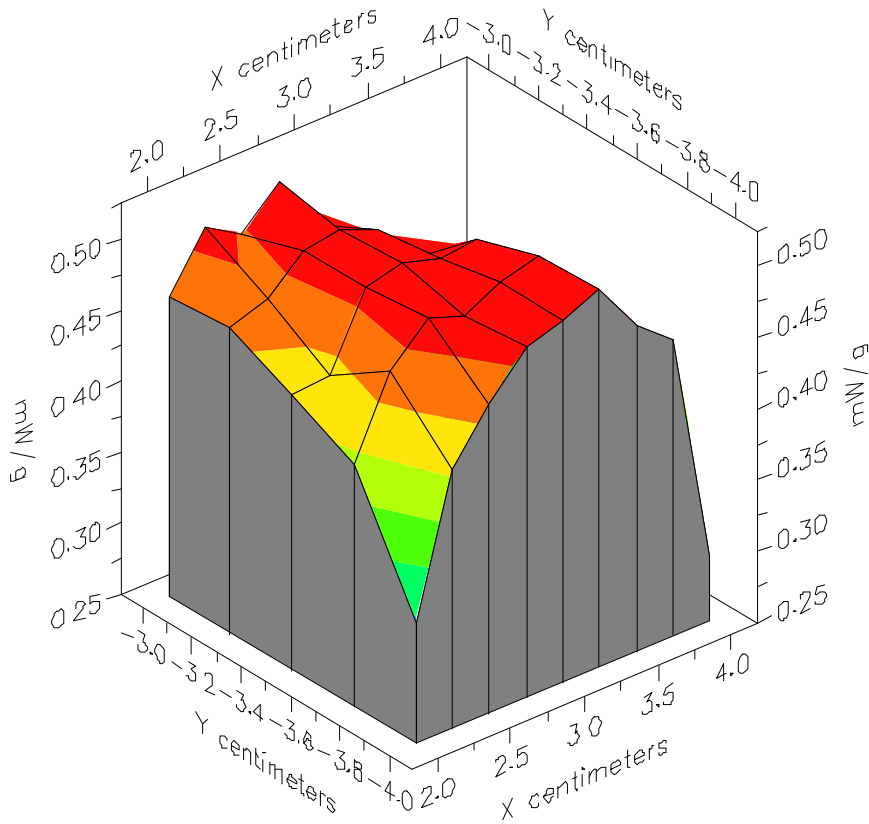


File : 01091309\_ZOOM

Start : 13-Sep-101 10:52:19 am End : 13-Sep-101 10:58:08 am

SANYO/SCP-5150/1;848.97MHz;W;Helical/In;

Head/Left Ear;ZOOM/SAR;PCTEST/E Field/0 DegreesBrain/41.500/0.900

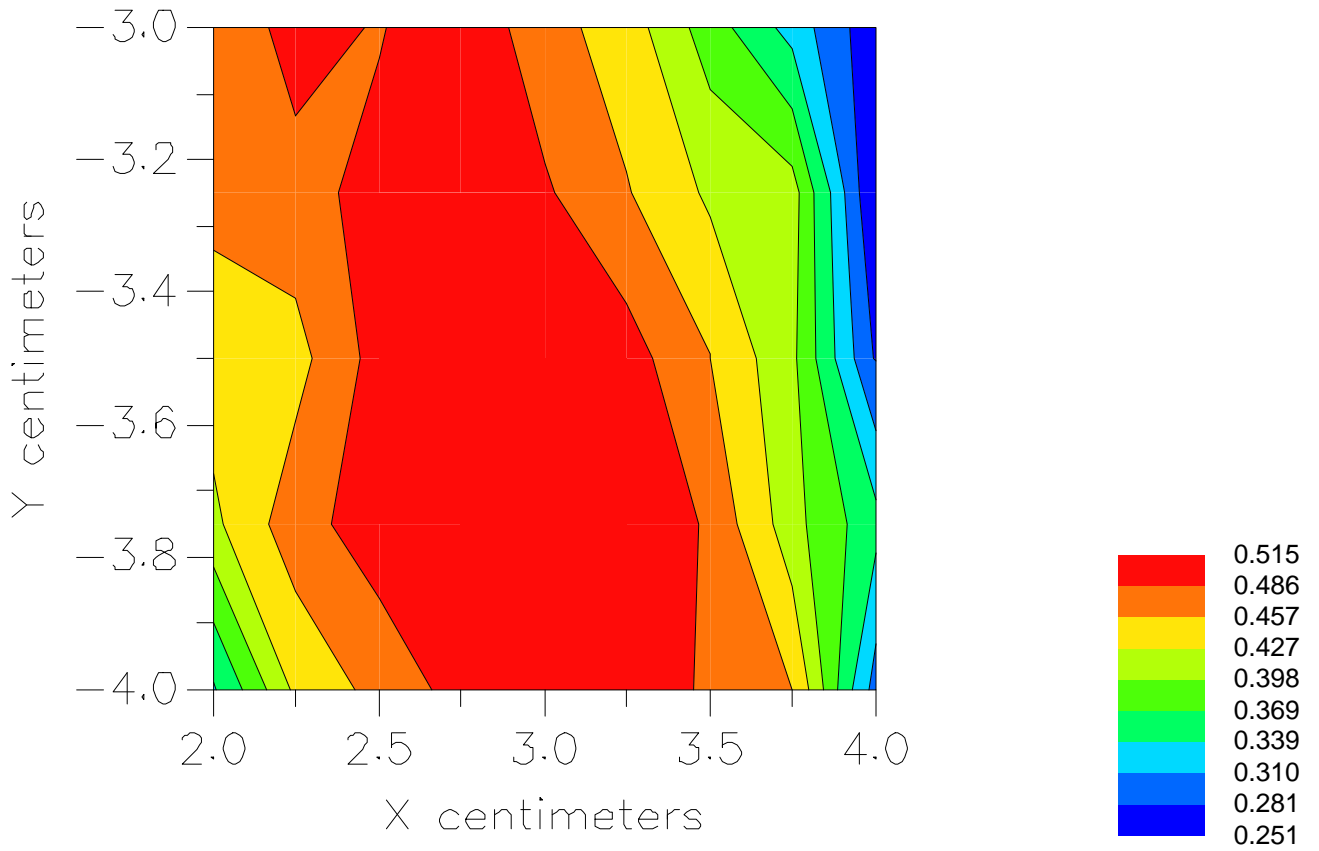


File : 01091309\_ZOOM

Start : 13-Sep-101 10:52:19 am End : 13-Sep-101 10:58:08 am

SANYO/SCP-5150/1;848.97MHz;W;Helical/In;

Head/Left Ear;ZOOM/SAR;PCTEST/E Field/0 DegreesBrain/41.500/0.900



File : c:/idx3/SYSTEM/SARMEAS3/data/Normal/01091310\_ZOOM.VLT  
Start : 13-Sep-101 11:04:51 am End : 13-Sep-101 11:10:40 am

Radio Type : SANYO  
Model Number : SCP-5150  
Serial Number : 1  
Frequency : 848.97 MHz  
Peak Trans. Pwr : 0.275 W  
Start Trans. Pwr : 0.275 W  
Antenna Type : Helical  
Antenna Posn. : Out  
Phantom Type : Head  
Phantom Posn. : Left Ear  
Scan Type : ZOOM/SAR  
Probe Name : PCTEST  
Field Type : E Field  
Orientation : 0 Degrees

Mixture Type = Brain  
Mixture Dielectric Constant = 41.500  
Mixture Conductivity = 0.900

Comment :  
SANYO DUAL-BAND PHONE - AMPS MODE  
CH 0799 Conducted 24.4 dBm  
SANYO DUAL-BAND PHONE - TILT

Robot : PCTEST

Probe Offset = 0.25 cm  
Sensor Factor = 0.0108  
Conversion Factor = 0.788

PCTEST Amplifier Channel Settings : 0.166 0.135 0.132

Max Location : X = 2.750, Y = -3.500, Z = 0.000 (cm) Value = 5.662

Measured Values (volts) =  
5.507E-003 4.359E-003 3.833E-003 3.379E-003 2.943E-003 2.622E-003  
2.311E-003 2.036E-003 1.714E-003 1.471E-003 1.291E-003 1.106E-003  
9.877E-004 8.276E-004 6.528E-004 5.651E-004 5.067E-004 4.105E-004  
3.798E-004 3.073E-004 2.744E-004

Calc. Voltage @ Surface (Vs) = 0.0066

Voltage @ 1.00 cm (Vt) = 0.0034

Ave. Voltage (Vs+Vt)/2 = 0.0050

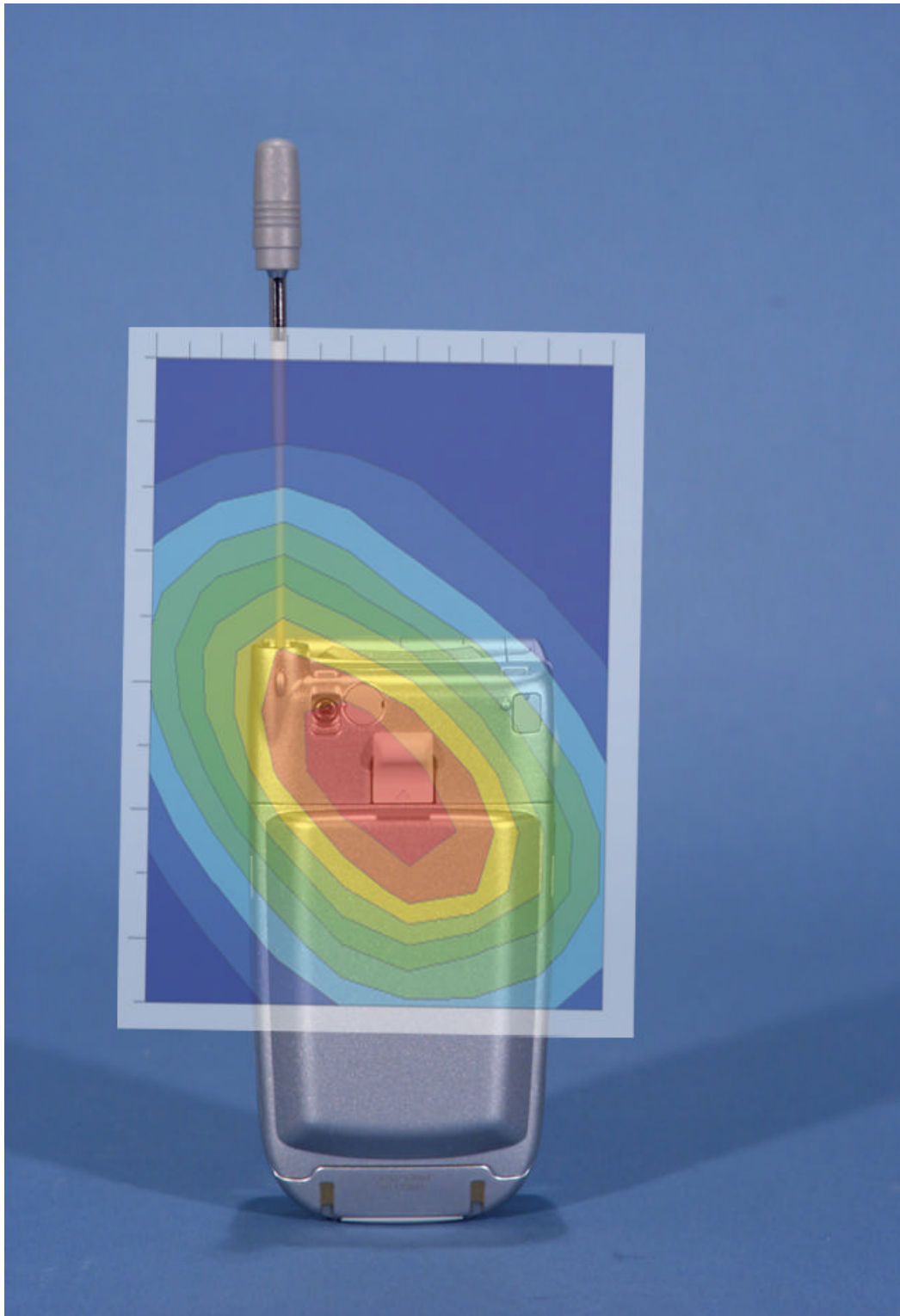
Ave. SAR over 1 g (mW/g) = 0.3644



# Peak SAR Location

---

## 800 MHz Body SAR



File : c:/idx3/SYSTEM/SARMEAS3/data/Normal/01091334\_ZOOM.VLT  
Start : 13-Sep-101 03:46:13 pm End : 13-Sep-101 03:54:20 pm

Radio Type : SANYO  
Model Number : SCP-5150  
Serial Number : 1  
Frequency : 824.04 MHz  
Peak Trans. Pwr : 0.275 W  
Start Trans. Pwr : 0.275 W  
Antenna Type : Helical  
Antenna Posn. : In  
Phantom Type : Body  
Phantom Posn. : Abdomen  
Scan Type : ZOOM/SAR  
Probe Name : PCTEST  
Field Type : E Field  
Orientation : 0 Degrees

Mixture Type = Muscle  
Mixture Dielectric Constant = 56.100  
Mixture Conductivity = 0.950

Comment :  
SANYO DUAL-BAND PHONE - AMPS MODE  
CH 0991 Conducted 24.4 dBm  
SANYO DUAL-BAND PHONE - BODY SAR

Robot : PCTEST

Probe Offset = 0.25 cm  
Sensor Factor = 0.0108  
Conversion Factor = 0.894

PCTEST Amplifier Channel Settings : 0.166 0.135 0.132

Max Location : X = -0.250, Y = -1.750, Z = 0.000 (cm) Value = 9.040

Measured Values (volts) =  
8.472E-003 6.884E-003 5.842E-003 5.074E-003 4.472E-003 4.084E-003  
3.782E-003 3.425E-003 3.033E-003 2.612E-003 2.072E-003 1.535E-003  
1.017E-003 7.165E-004 4.891E-004 4.733E-004 5.562E-004 7.604E-004  
9.350E-004 9.798E-004 7.879E-004

Calc. Voltage @ Surface (Vs) = 0.0102

Voltage @ 1.00 cm (Vt) = 0.0051

Ave. Voltage (Vs+Vt)/2 = 0.0076

Ave. SAR over 1 g (mW/g) = 0.6324

File : c:/idx3/SYSTEM/SARMEAS3/data/Normal/01091330\_ZOOM.VLT  
Start : 13-Sep-101 02:57:53 pm End : 13-Sep-101 03:10:06 pm

Radio Type : SANYO  
Model Number : SCP-5150  
Serial Number : 1  
Frequency : 824.04 MHz  
Peak Trans. Pwr : 0.275 W  
Start Trans. Pwr : 0.275 W  
Antenna Type : Helical  
Antenna Posn. : Out  
Phantom Type : Body  
Phantom Posn. : Abdomen  
Scan Type : ZOOM/SAR  
Probe Name : PCTEST  
Field Type : E Field  
Orientation : 0 Degrees

Mixture Type = Muscle  
Mixture Dielectric Constant = 56.100  
Mixture Conductivity = 0.950

Comment :  
SANYO DUAL-BAND PHONE - AMPS MODE  
CH 0991 Conducted 24.4 dBm  
SANYO DUAL-BAND PHONE - BODY SAR

Robot : PCTEST

Probe Offset = 0.25 cm  
Sensor Factor = 0.0108  
Conversion Factor = 0.894

PCTEST Amplifier Channel Settings : 0.166 0.135 0.132

Max Location : X = -0.500, Y = -1.750, Z = 0.000 (cm) Value = 17.628

Measured Values (volts) =  
1.775E-002 1.464E-002 1.204E-002 1.077E-002 9.690E-003 9.055E-003  
8.388E-003 7.741E-003 6.921E-003 5.887E-003 4.729E-003 3.211E-003  
2.307E-003 1.531E-003 1.091E-003 1.146E-003 1.476E-003 1.980E-003  
2.415E-003 2.485E-003 1.981E-003

Calc. Voltage @ Surface (Vs) = 0.0216

Voltage @ 1.00 cm (Vt) = 0.0108

Ave. Voltage (Vs+Vt)/2 = 0.0162

Ave. SAR over 1 g (mW/g) = 1.3380

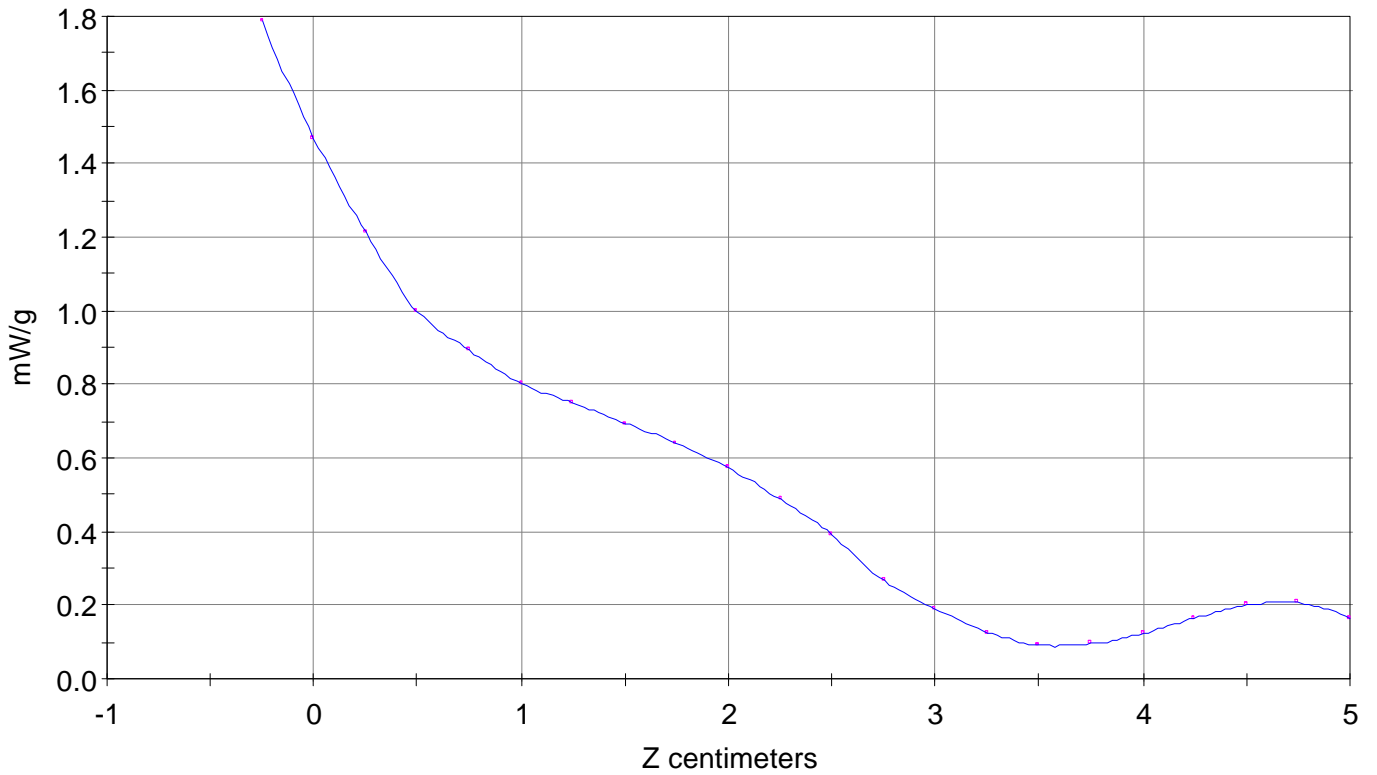
SAR Scan

File : 01091330\_ZOOM

Start : 13-Sep-101 02:57:53 pm End : 13-Sep-101 03:10:06 pm

SANYO/SCP-5150/1;824.04MHz;W;Helical/Out;

Body/Abdomen;ZOOM/SAR;PCTEST/E Field/0 DegreesMuscle/56.100/0.950

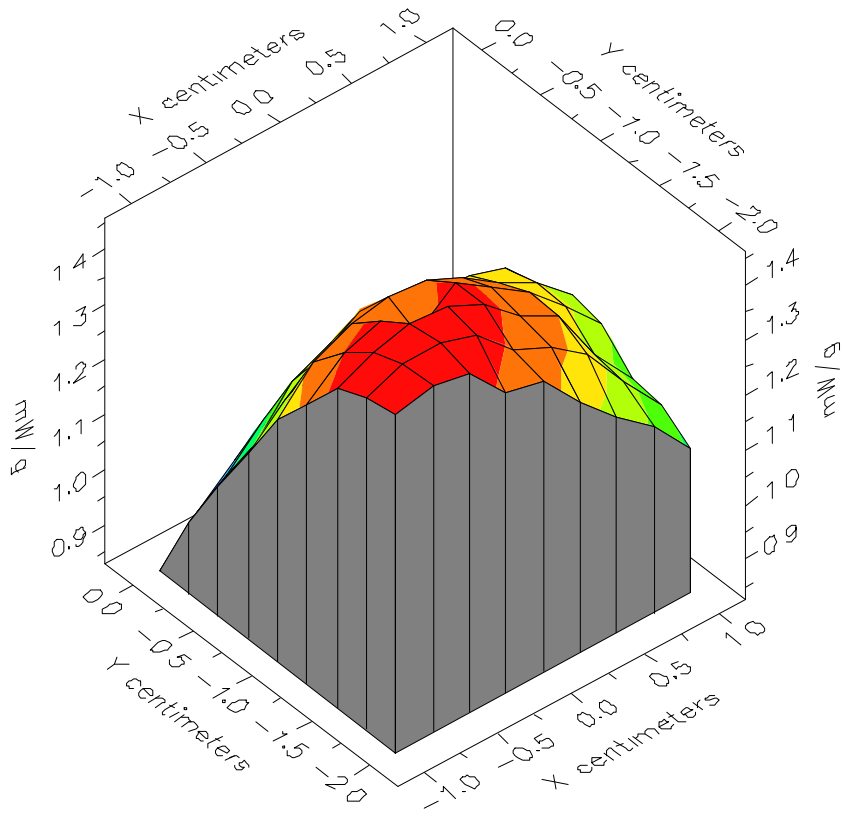


File : 01091330\_ZOOM

Start : 13-Sep-101 02:57:53 pm End : 13-Sep-101 03:10:06 pm

SANYO/SCP-5150/1;824.04MHz;W;Helical/Out;

Body/Abdomen;ZOOM/SAR;PCTEST/E Field/0 DegreesMuscle/56.100/0.950

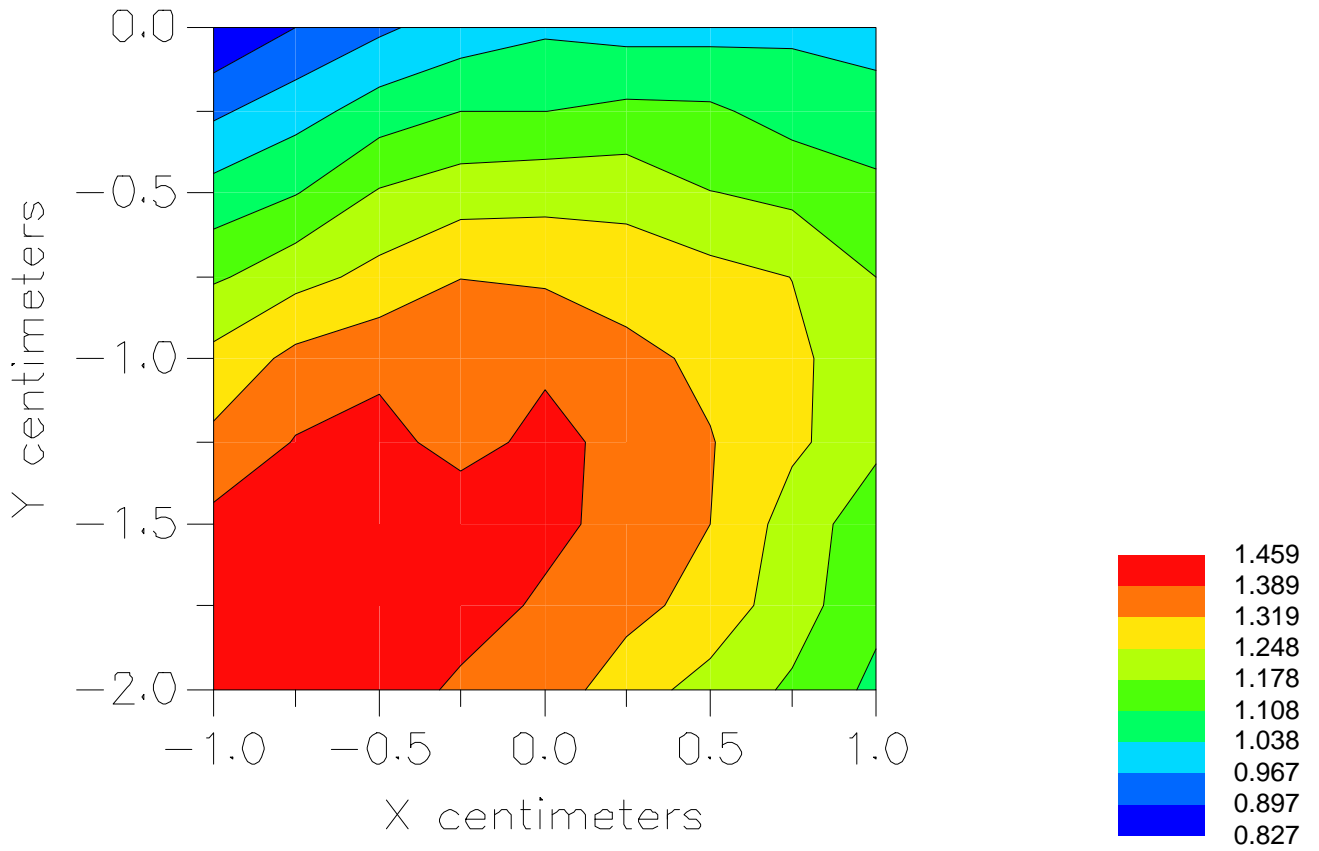


File : 01091330\_ZOOM

Start : 13-Sep-101 02:57:53 pm End : 13-Sep-101 03:10:06 pm

SANYO/SCP-5150/1;824.04MHz;W;Helical/Out;

Body/Abdomen;ZOOM/SAR;PCTEST/E Field/0 DegreesMuscle/56.100/0.950



File : c:/idx3/SYSTEM/SARMEAS3/data/Normal/01091333\_ZOOM.VLT  
Start : 13-Sep-101 03:35:41 pm End : 13-Sep-101 03:43:49 pm

Radio Type : SANYO  
Model Number : SCP-5150  
Serial Number : 1  
Frequency : 836.49 MHz  
Peak Trans. Pwr : 0.275 W  
Start Trans. Pwr : 0.275 W  
Antenna Type : Helical  
Antenna Posn. : In  
Phantom Type : Body  
Phantom Posn. : Abdomen  
Scan Type : ZOOM/SAR  
Probe Name : PCTEST  
Field Type : E Field  
Orientation : 0 Degrees

Mixture Type = Muscle  
Mixture Dielectric Constant = 56.100  
Mixture Conductivity = 0.950

Comment :  
SANYO DUAL-BAND PHONE - AMPS MODE  
CH 0383 Conducted 24.4 dBm  
SANYO DUAL-BAND PHONE - BODY SAR

Robot : PCTEST

Probe Offset = 0.25 cm  
Sensor Factor = 0.0108  
Conversion Factor = 0.894

PCTEST Amplifier Channel Settings : 0.166 0.135 0.132

Max Location : X = -0.250, Y = -1.750, Z = 0.000 (cm) Value = 10.660

Measured Values (volts) =  
9.924E-003 7.939E-003 6.613E-003 5.750E-003 5.100E-003 4.675E-003  
4.299E-003 3.963E-003 3.490E-003 2.939E-003 2.342E-003 1.745E-003  
1.216E-003 7.866E-004 5.845E-004 5.669E-004 7.023E-004 9.214E-004  
1.077E-003 1.144E-003 9.247E-004

Calc. Voltage @ Surface (Vs) = 0.0122

Voltage @ 1.00 cm (Vt) = 0.0058

Ave. Voltage (Vs+Vt)/2 = 0.0090

Ave. SAR over 1 g (mW/g) = 0.7412

File : c:/idx3/SYSTEM/SARMEAS3/data/Normal/01091332\_ZOOM.VLT  
Start : 13-Sep-101 03:24:23 pm End : 13-Sep-101 03:32:32 pm

Radio Type : SANYO  
Model Number : SCP-5150  
Serial Number : 1  
Frequency : 836.49 MHz  
Peak Trans. Pwr : 0.275 W  
Start Trans. Pwr : 0.275 W  
Antenna Type : Helical  
Antenna Posn. : Out  
Phantom Type : Body  
Phantom Posn. : Abdomen  
Scan Type : ZOOM/SAR  
Probe Name : PCTEST  
Field Type : E Field  
Orientation : 0 Degrees

Mixture Type = Muscle  
Mixture Dielectric Constant = 56.100  
Mixture Conductivity = 0.950

Comment :  
SANYO DUAL-BAND PHONE - AMPS MODE  
CH 0383 Conducted 24.4 dBm  
SANYO DUAL-BAND PHONE - BODY SAR

Robot : PCTEST

Probe Offset = 0.25 cm  
Sensor Factor = 0.0108  
Conversion Factor = 0.894

PCTEST Amplifier Channel Settings : 0.166 0.135 0.132

Max Location : X = -0.750, Y = -2.000, Z = 0.000 (cm) Value = 18.018

Measured Values (volts) =  
1.682E-002 1.458E-002 1.182E-002 1.018E-002 9.187E-003 8.453E-003  
7.778E-003 7.109E-003 6.229E-003 5.205E-003 3.928E-003 2.941E-003  
1.911E-003 1.301E-003 1.029E-003 1.170E-003 1.536E-003 1.986E-003  
2.300E-003 2.152E-003 1.599E-003

Calc. Voltage @ Surface (Vs) = 0.0201

Voltage @ 1.00 cm (Vt) = 0.0102

Ave. Voltage (Vs+Vt)/2 = 0.0151

Ave. SAR over 1 g (mW/g) = 1.2524



File : c:/idx3/SYSTEM/SARMEAS3/data/Normal/01091329\_ZOOM.VLT  
Start : 13-Sep-101 02:44:05 pm End : 13-Sep-101 02:56:18 pm

Radio Type : SANYO  
Model Number : SCP-5150  
Serial Number : 1  
Frequency : 848.97 MHz  
Peak Trans. Pwr : 0.275 W  
Start Trans. Pwr : 0.275 W  
Antenna Type : Helical  
Antenna Posn. : In  
Phantom Type : Body  
Phantom Posn. : Abdomen  
Scan Type : ZOOM/SAR  
Probe Name : PCTEST  
Field Type : E Field  
Orientation : 0 Degrees

Mixture Type = Muscle  
Mixture Dielectric Constant = 56.100  
Mixture Conductivity = 0.950

Comment :  
SANYO DUAL-BAND PHONE - AMPS MODE  
CH 0799 Conducted 24.4 dBm  
SANYO DUAL-BAND PHONE - BODY SAR

Robot : PCTEST

Probe Offset = 0.25 cm  
Sensor Factor = 0.0108  
Conversion Factor = 0.894

PCTEST Amplifier Channel Settings : 0.166 0.135 0.132

Max Location : X = -0.250, Y = -1.750, Z = 0.000 (cm) Value = 11.859

Measured Values (volts) =  
1.150E-002 1.013E-002 8.254E-003 7.120E-003 6.231E-003 5.602E-003  
5.192E-003 4.789E-003 4.347E-003 3.784E-003 3.118E-003 2.405E-003  
1.744E-003 1.139E-003 7.359E-004 5.468E-004 6.480E-004 8.545E-004  
1.113E-003 1.274E-003 1.225E-003

Calc. Voltage @ Surface (Vs) = 0.0136

Voltage @ 1.00 cm (Vt) = 0.0071

Ave. Voltage (Vs+Vt)/2 = 0.0104

Ave. SAR over 1 g (mW/g) = 0.8572

File : c:/idx3/SYSTEM/SARMEAS3/data/Normal/01091328\_ZOOM.VLT  
Start : 13-Sep-101 02:22:44 pm End : 13-Sep-101 02:34:29 pm

Radio Type : SANYO  
Model Number : SCP-5150  
Serial Number : 1  
Frequency : 848.97 MHz  
Peak Trans. Pwr : 0.275 W  
Start Trans. Pwr : 0.275 W  
Antenna Type : Helical  
Antenna Posn. : Out  
Phantom Type : Body  
Phantom Posn. : Abdomen  
Scan Type : ZOOM/SAR  
Probe Name : PCTEST  
Field Type : E Field  
Orientation : 0 Degrees

Mixture Type = Muscle  
Mixture Dielectric Constant = 56.100  
Mixture Conductivity = 0.950

Comment :  
SANYO DUAL-BAND PHONE - AMPS MODE  
CH 0799 Conducted 24.4 dBm  
SANYO DUAL-BAND PHONE - BODY SAR

Robot : PCTEST

Probe Offset = 0.25 cm  
Sensor Factor = 0.0108  
Conversion Factor = 0.894

PCTEST Amplifier Channel Settings : 0.166 0.135 0.132

Max Location : X = -0.250, Y = -1.500, Z = 0.000 (cm) Value = 16.395

Measured Values (volts) =  
1.609E-002 1.580E-002 1.277E-002 1.035E-002 9.137E-003 8.089E-003  
7.455E-003 7.000E-003 6.468E-003 5.737E-003 4.816E-003 3.785E-003  
2.783E-003 2.027E-003 1.289E-003 9.146E-004 8.792E-004 1.196E-003  
1.604E-003 1.913E-003 2.032E-003

Calc. Voltage @ Surface (Vs) = 0.0181

Voltage @ 1.00 cm (Vt) = 0.0103

Ave. Voltage (Vs+Vt)/2 = 0.0142

Ave. SAR over 1 g (mW/g) = 1.1794

File : c:/idx3/SYSTEM/SARMEAS3/data/Normal/01091337\_ZOOM.VLT  
Start : 13-Sep-101 04:43:28 pm End : 13-Sep-101 04:55:28 pm

Radio Type : SANYO  
Model Number : SCP-5150  
Serial Number : 1  
Frequency : 824.04 MHz  
Peak Trans. Pwr : 0.275 W  
Start Trans. Pwr : 0.275 W  
Antenna Type : Helical  
Antenna Posn. : Out  
Phantom Type : Body  
Phantom Posn. : Abdomen  
Scan Type : ZOOM/SAR  
Probe Name : PCTEST  
Field Type : E Field  
Orientation : 0 Degrees

Mixture Type = Muscle  
Mixture Dielectric Constant = 56.100  
Mixture Conductivity = 0.950

Comment :  
SANYO DUAL-BAND PHONE - AMPS MODE  
CH 0991 Conducted 24.4 dBm  
SANYO DUAL-BAND PHONE - BODY SAR (EXT BATT)

Robot : PCTEST

Probe Offset = 0.25 cm  
Sensor Factor = 0.0108  
Conversion Factor = 0.894

PCTEST Amplifier Channel Settings : 0.166 0.135 0.132

Max Location : X = -2.000, Y = -2.250, Z = 0.000 (cm) Value = 16.281

Measured Values (volts) =  
1.586E-002 1.300E-002 1.137E-002 1.042E-002 9.238E-003 8.544E-003  
7.804E-003 6.408E-003 4.972E-003 3.738E-003 2.510E-003 1.623E-003  
1.166E-003 1.117E-003 1.424E-003 1.947E-003 2.379E-003 2.510E-003  
2.053E-003 1.200E-003 5.947E-004

Calc. Voltage @ Surface (Vs) = 0.0187

Voltage @ 1.00 cm (Vt) = 0.0104

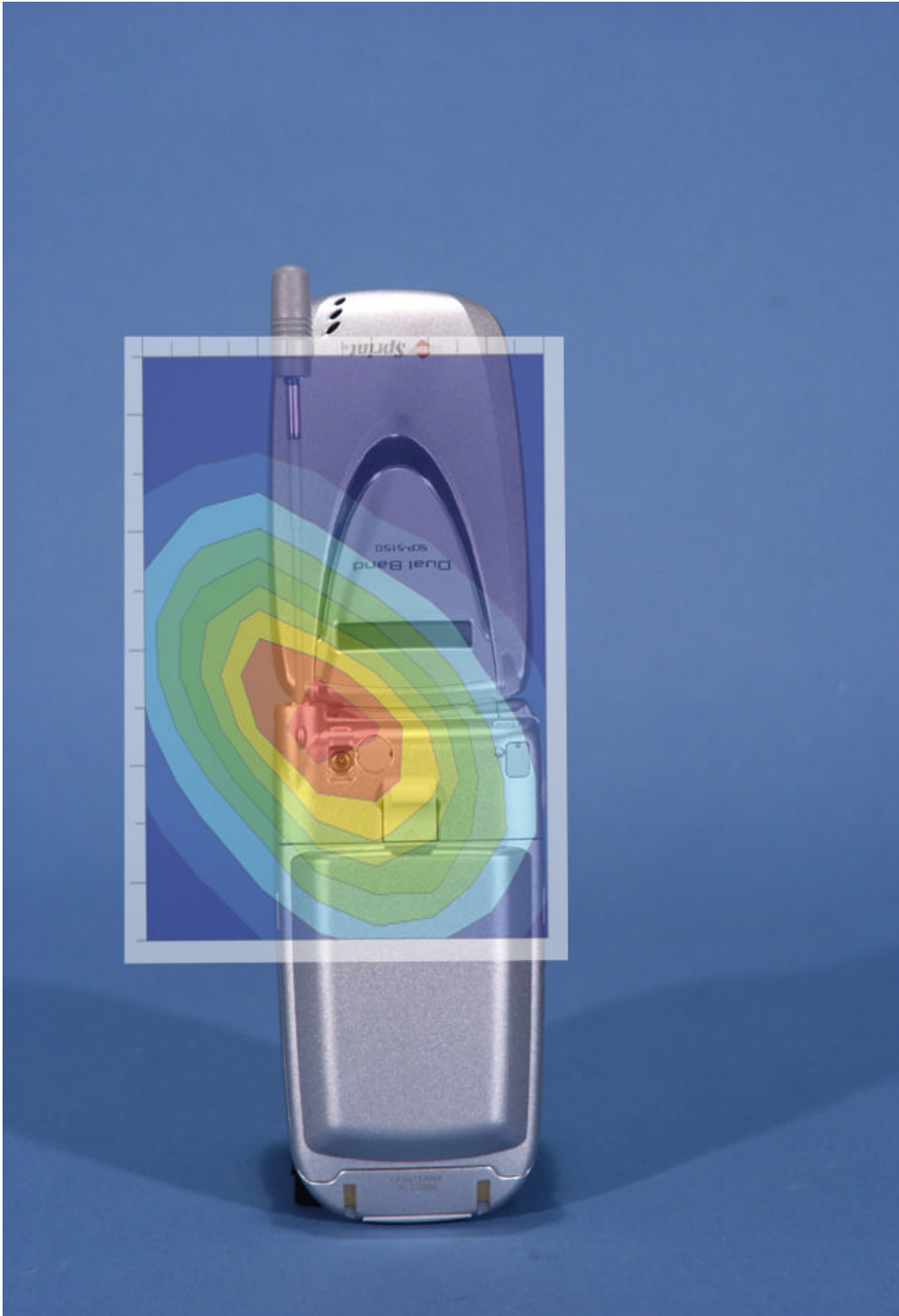
Ave. Voltage (Vs+Vt)/2 = 0.0146

Ave. SAR over 1 g (mW/g) = 1.2073

# Peak SAR Location

---

## Hand SAR



File : c:/idx3/SYSTEM/SARMEAS3/data/Normal/01091340\_SAR.VLT  
Start : 13-Sep-101 05:46:07 pm End : 13-Sep-101 05:52:50 pm

Radio Type : SANYO  
Model Number : SCP-5150  
Serial Number : 1  
Frequency : 824.04 MHz  
Peak Trans. Pwr : 0.275 W  
Start Trans. Pwr : 0.275 W  
Antenna Type : Helical  
Antenna Posn. : In  
Phantom Type : Body  
Phantom Posn. : Abdomen  
Scan Type : ZOOM/SAR 10g  
Probe Name : PCTEST  
Field Type : E Field  
Orientation : 0 Degrees

Mixture Type = Muscle  
Mixture Dielectric Constant = 56.100  
Mixture Conductivity = 0.950

Comment :  
SANYO DUAL-BAND PHONE - AMPS MODE  
CH 0991 Conducted 24.4 dBm  
SANYO DUAL-BAND PHONE - HAND SAR

Robot : PCTEST

Probe Offset = 0.25 cm  
Sensor Factor = 0.0108  
Conversion Factor = 0.894

PCTEST Amplifier Channel Settings : 0.166 0.135 0.132

Max Location : X = -0.500, Y = -1.750, Z = 0.000 (cm) Value = 29.074

Ave. SAR over 10 g (mW/g) = 1.2645

File : c:/idx3/SYSTEM/SARMEAS3/data/Normal/01091339\_SAR.VLT  
Start : 13-Sep-101 05:24:54 pm End : 13-Sep-101 05:31:32 pm

Radio Type : SANYO  
Model Number : SCP-5150  
Serial Number : 1  
Frequency : 824.04 MHz  
Peak Trans. Pwr : 0.275 W  
Start Trans. Pwr : 0.275 W  
Antenna Type : Helical  
Antenna Posn. : Out  
Phantom Type : Body  
Phantom Posn. : Abdomen  
Scan Type : ZOOM/SAR 10g  
Probe Name : PCTEST  
Field Type : E Field  
Orientation : 0 Degrees

Mixture Type = Muscle  
Mixture Dielectric Constant = 56.100  
Mixture Conductivity = 0.950

Comment :  
SANYO DUAL-BAND PHONE - AMPS MODE  
CH 0991 Conducted 24.4 dBm  
SANYO DUAL-BAND PHONE - HAND SAR

Robot : PCTEST

Probe Offset = 0.25 cm  
Sensor Factor = 0.0108  
Conversion Factor = 0.894

PCTEST Amplifier Channel Settings : 0.166 0.135 0.132

Max Location : X = -0.750, Y = -2.250, Z = 0.000 (cm) Value = 41.763

Ave. SAR over 10 g (mW/g) = 1.9124

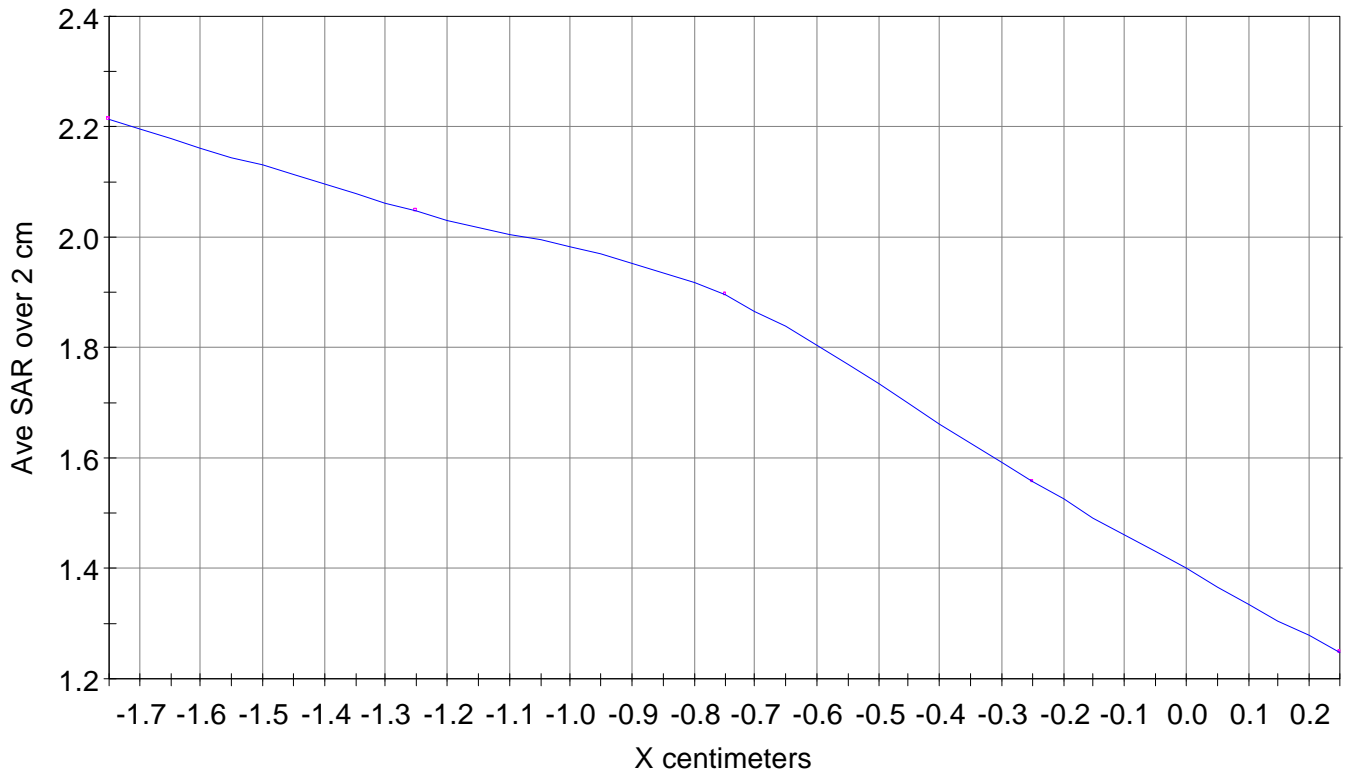
X-Z Plane Slice Y=-2.250

File : 01091339\_SAR

Start : 13-Sep-101 05:24:54 pm End : 13-Sep-101 05:31:32 pm

SANYO/SCP-5150/1;824.04MHz;W;Helical/Out;

Body/Abdomen;ZOOM/SAR 10g;PCTEST/E Field/0 DegreesMuscle/56.100/0.950

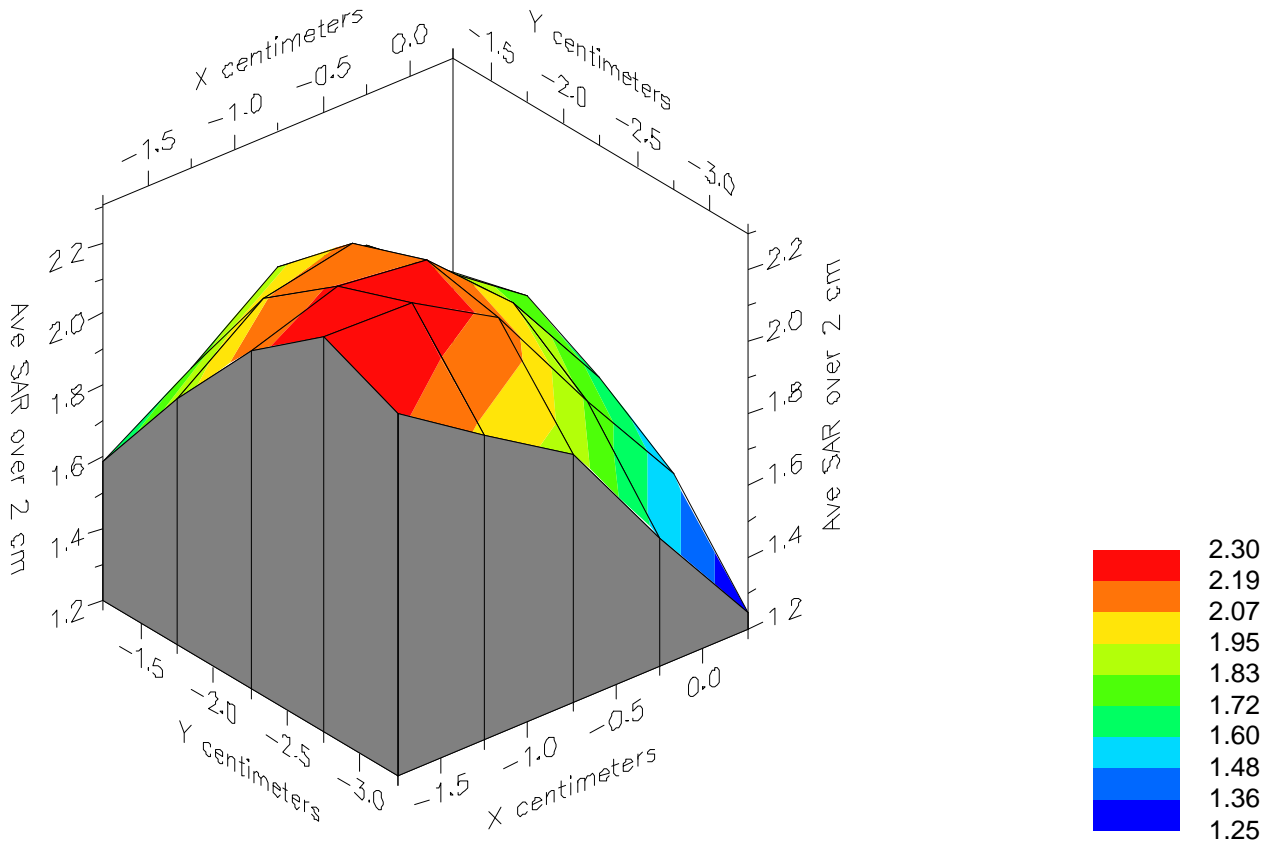


File : 01091339\_SAR

Start : 13-Sep-101 05:24:54 pm End : 13-Sep-101 05:31:32 pm

SANYO/SCP-5150/1;824.04MHz;W;Helical/Out;

Body/Abdomen;ZOOM/SAR 10g;PCTEST/E Field/0 DegreesMuscle/56.100/0.950





File : 01091339\_SAR

Start : 13-Sep-101 05:24:54 pm End : 13-Sep-101 05:31:32 pm

SANYO/SCP-5150/1;824.04MHz;W;Helical/Out;

Body/Abdomen;ZOOM/SAR 10g;PCTEST/E Field/0 DegreesMuscle/56.100/0.950

