

SANYO EXTENDED BATTERY Model No. SCP-43L8PK
Extended Lithon Battery 3.7V

CAUTION

- DO NOT INCINERATE
- DO NOT EXPOSE TO HIGH TEMPERATURES (80°C/140°F)
- DO NOT DISASSEMBLE
- DO NOT SHORT CIRCUIT
- DISPOSE OF PROPERLY
- USE SPECIFIED CHARGER ONLY

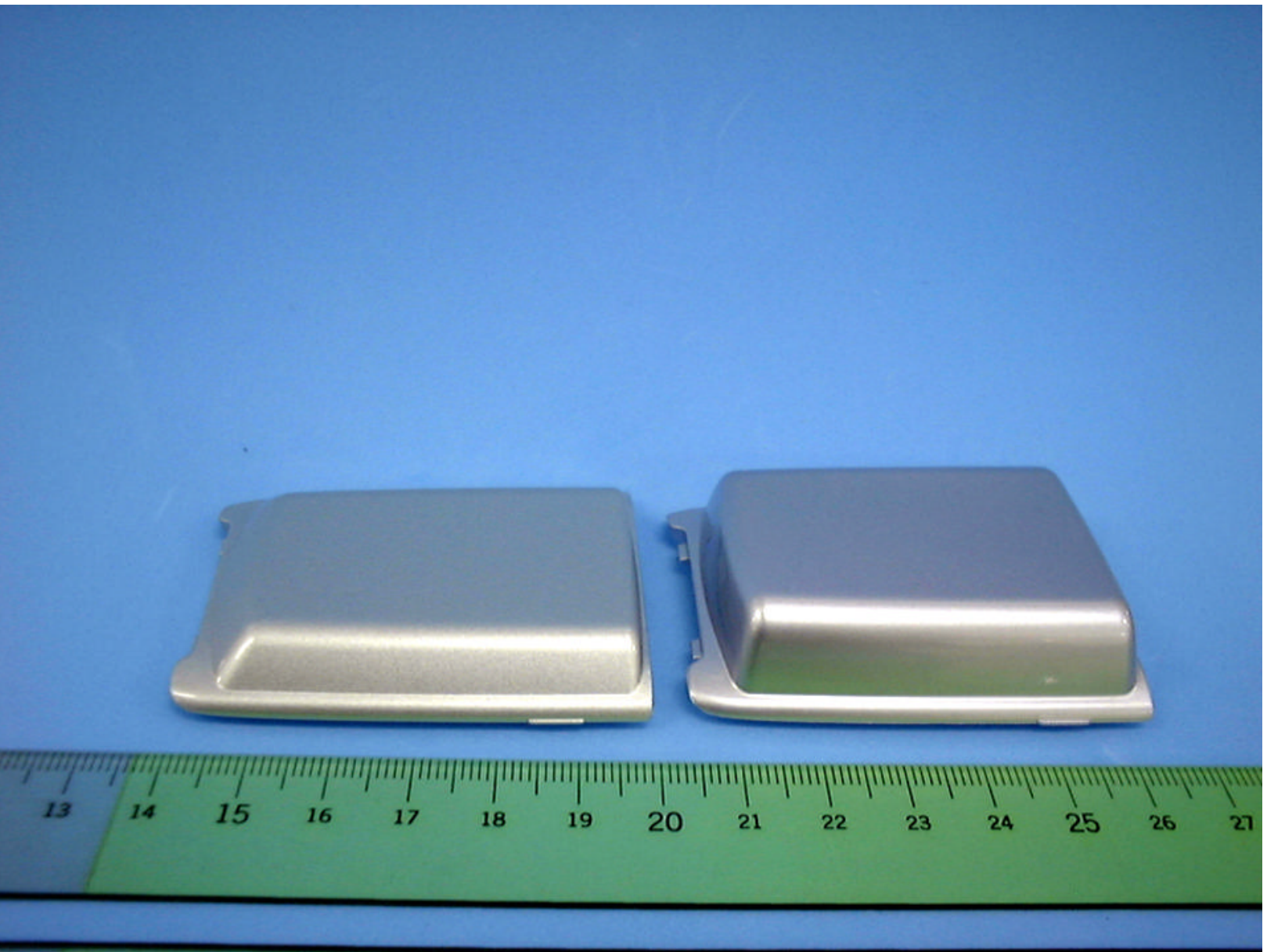
SANYO Electric Co., Ltd. Made in Japan

SANYO MEDIUM BATTERY Model No. SCP-43L8PM
Medium Lithon Battery 3.7V

CAUTION

- DO NOT INCINERATE
- DO NOT EXPOSE TO HIGH TEMPERATURES (80°C/140°F)
- DO NOT DISASSEMBLE
- DO NOT SHORT CIRCUIT
- DISPOSE OF PROPERLY
- USE SPECIFIED CHARGER ONLY

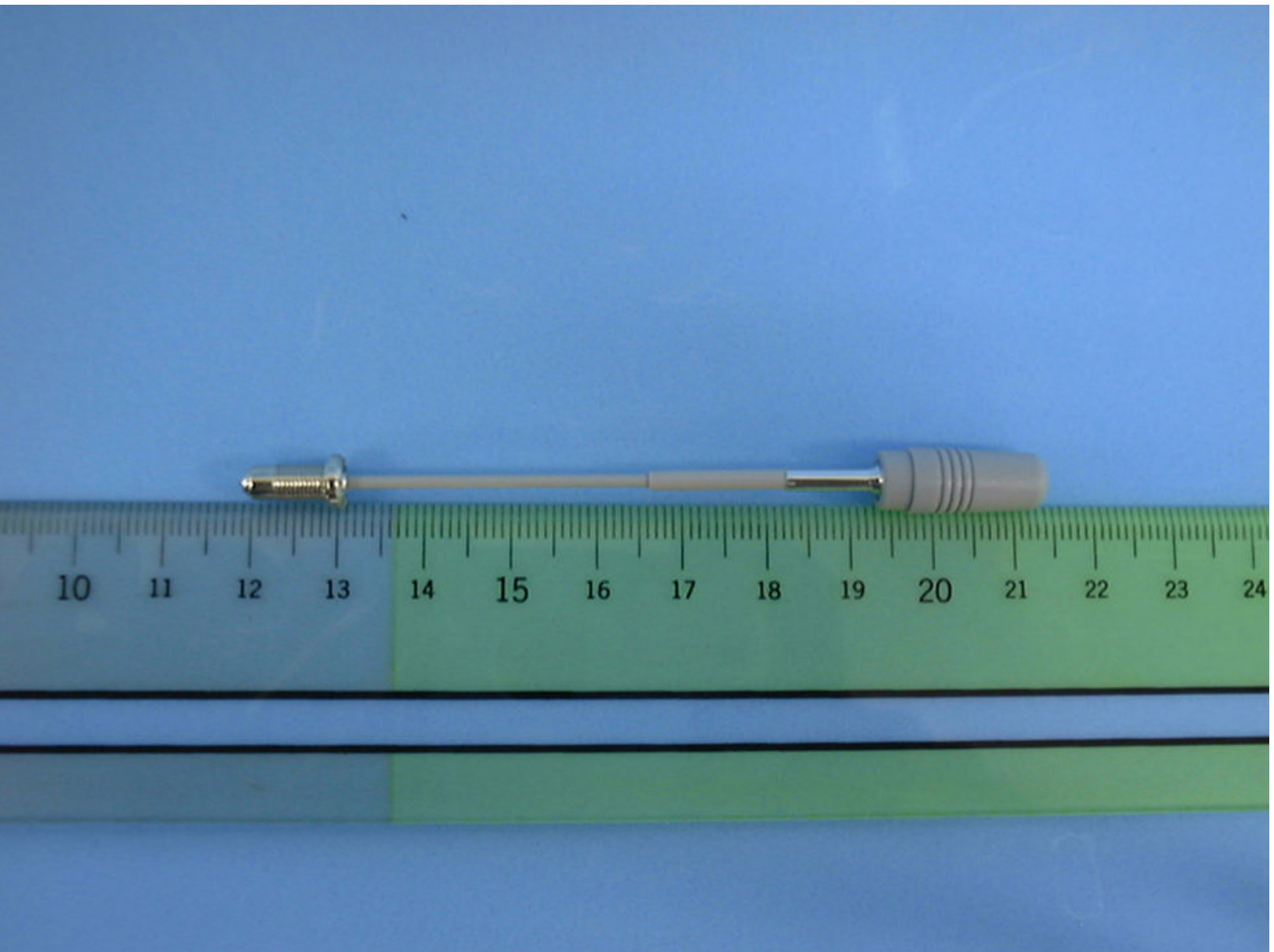
SANYO Electric Co., Ltd. Made in Japan



© 2001 PCTEST Lab

SANYO FCC ID: AEZSCP-5150 (Model: SCP-5150)
Dual-Band Analog/PCS Phone (AMPS/PCS CDMA)

NVLAP Lab Code: 100431-0



© 2001 PCTEST Lab

SANYO FCC ID: AEZSCP-5150 (Model: SCP-5150)
Dual-Band Analog/PCS Phone (AMPS/PCS CDMA)

NVLAP Lab Code: 100431-0