

File : c:/idx3/SYSTEM/SARMEAS3/data/Normal/99051315_ZOOM.VLT
Start : 13-May-99 03:04:52 pm End : 13-May-99 03:14:34 pm

Radio Type : SANYO
Model Number : SCP-4000
Serial Number : 002
Frequency : 1851.25 MHz
Peak Trans. Pwr : 0.200 W
Start Trans. Pwr : 0.200 W
Antenna Type : Helical
Antenna Posn. : In
Phantom Type : Head
Phantom Posn. : Left Ear
Scan Type : ZOOM/SAR
Probe Name : PCTEST
Field Type : E Field
Orientation : 0 Degrees

Mixture Type = Brain
Mixture Dielectric Constant = 42.900
Mixture Conductivity = 1.650

Comment :
SANYO DUAL BAND PHONE
CHANNEL 0025 CDMA/PCD MODE
0.6 CABLE LOSS

Robot : PCTEST

Probe Offset = 0.25 cm
Sensor Factor = 0.0108
Conversion Factor = 1.200

PCTEST Amplifier Channel Settings : 0.250 0.233 0.225

Diode Coefficients:

Channel 1	An=-52.065	Bn=113.200	Cn=39.840	Dn=0.001	Mn=0.024	Yn=0.000
Channel 2	An=0.000	Bn=0.000	Cn=0.000	Dn=0.000	Mn=0.000	Yn=0.000
Channel 3	An=0.000	Bn=0.000	Cn=0.000	Dn=0.000	Mn=0.000	Yn=0.000

Max Location : X = 1.500, Y = -3.750, Z = 0.000 (cm) Value = 2.241

Measured Values (volts) =

2.116E-003	1.754E-003	1.218E-003	8.925E-004	6.986E-004	5.501E-004
4.224E-004	3.279E-004	2.588E-004	2.086E-004	1.639E-004	1.235E-004
9.490E-005	9.000E-005	7.862E-005	7.146E-005	5.802E-005	4.910E-005
5.940E-005	4.322E-005	4.547E-005			

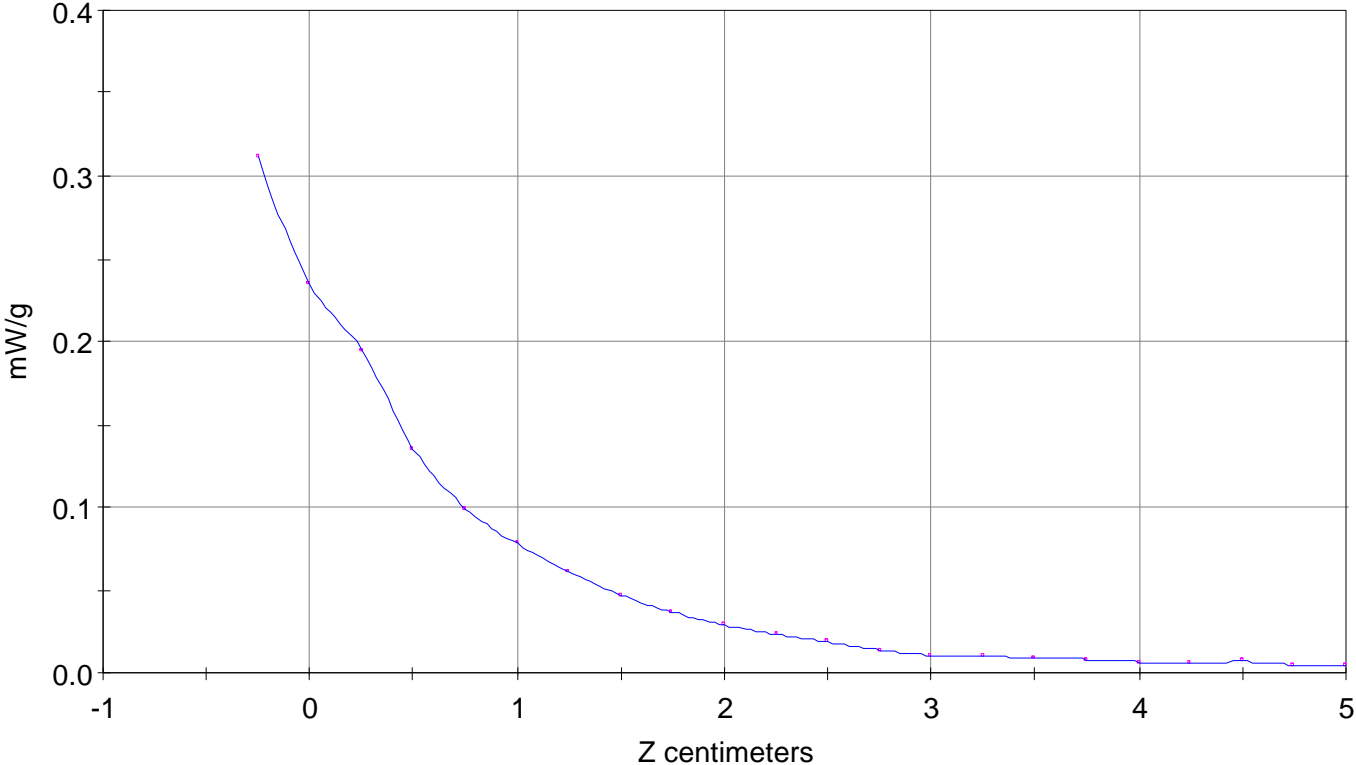
Calc. Voltage @ Surface (Vs) = 0.0028

Voltage @ 1.00 cm (Vt) = 0.0009

Ave. Voltage (Vs+Vt)/2 = 0.0018

Ave. SAR over 1 g (mW/g) = 0.2051

SAR Scan
File : 99051315_ZOOM
Start : 13-May-99 03:04:52 pm End : 13-May-99 03:14:34 pm
SANYO/SCP-4000/002;1851.25MHz;W;Helical/In;
Head/Left Ear;ZOOM/SAR;PCTEST/E Field/0 DegreesBrain/42.900/1.650



File : c:/idx3/SYSTEM/SARMEAS3/data/Normal/99051317_ZOOM.VLT
Start : 13-May-99 03:22:55 pm End : 13-May-99 03:34:41 pm

Radio Type : SANYO
Model Number : SCP-4000
Serial Number : 002
Frequency : 1851.25 MHz
Peak Trans. Pwr : 0.200 W
Start Trans. Pwr: 0.200 W
Antenna Type : Helical
Antenna Posn. : Out
Phantom Type : Head
Phantom Posn. : Left Ear
Scan Type : ZOOM/SAR
Probe Name : PCTEST
Field Type : E Field
Orientation : 0 Degrees

Mixture Type = Brain
Mixture Dielectric Constant = 42.900
Mixture Conductivity = 1.650

Comment :
SANYO DUAL BAND PHONE
CHANNEL 0025 CDMA/PCD MODE
0.6 CABLE LOSS

Robot : PCTEST

Probe Offset = 0.25 cm
Sensor Factor = 0.0108
Conversion Factor = 1.200

PCTEST Amplifier Channel Settings : 0.250 0.233 0.225

Diode Coefficients:

Channel 1	An=-52.065	Bn=113.200	Cn=39.840	Dn=0.001	Mn=0.024	Yn=0.000
Channel 2	An=0.000	Bn=0.000	Cn=0.000	Dn=0.000	Mn=0.000	Yn=0.000
Channel 3	An=0.000	Bn=0.000	Cn=0.000	Dn=0.000	Mn=0.000	Yn=0.000

Max Location : X = 1.500, Y = -3.250, Z = 0.000 (cm) Value = 1.417

Measured Values (volts) =

1.398E-003	1.104E-003	8.297E-004	6.349E-004	5.102E-004	4.087E-004
2.924E-004	2.464E-004	1.953E-004	1.566E-004	1.339E-004	1.037E-004
8.872E-005	8.745E-005	6.714E-005	6.734E-005	5.763E-005	4.949E-005
5.077E-005	5.332E-005	4.979E-005			

Calc. Voltage @ Surface (Vs) = 0.0018

Voltage @ 1.00 cm (Vt) = 0.0006

Ave. Voltage (Vs+Vt)/2 = 0.0012

Ave. SAR over 1 g (mW/g) = 0.1361

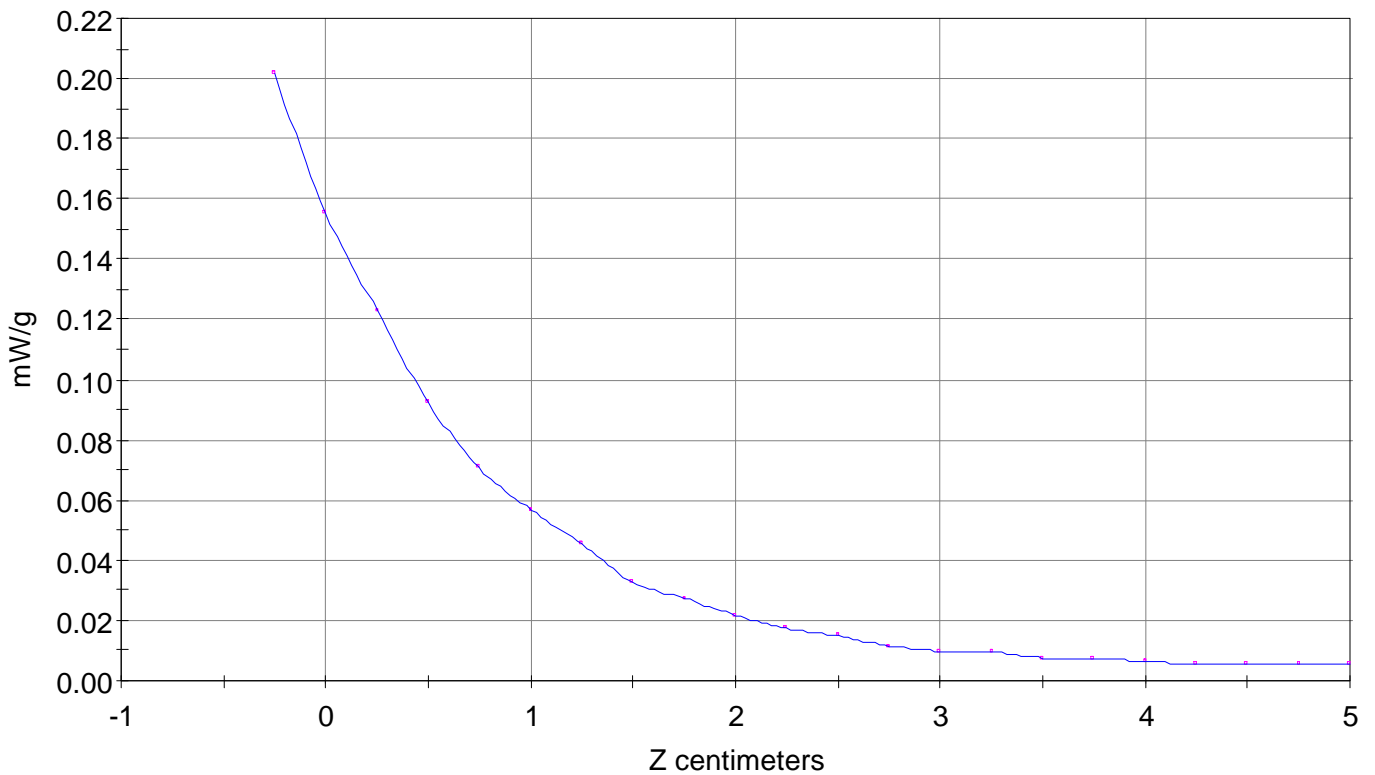
SAR Scan

File : 99051317_ZOOM

Start : 13-May-99 03:22:55 pm End : 13-May-99 03:34:41 pm

SANYO/SCP-4000/002;1851.25MHz;W;Helical/Out;

Head/Left Ear;ZOOM/SAR;PCTEST/E Field/0 DegreesBrain/42.900/1.650



File : c:/idx3/SYSTEM/SARMEAS3/data/Normal/99051318_ZOOM.VLT
Start : 13-May-99 03:50:37 pm End : 13-May-99 03:58:57 pm

Radio Type : SANYO
Model Number : SCP-4000
Serial Number : 002
Frequency : 1880 MHz
Peak Trans. Pwr : 0.200 W
Start Trans. Pwr : 0.200 W
Antenna Type : Helical
Antenna Posn. : In
Phantom Type : Head
Phantom Posn. : Left Ear
Scan Type : ZOOM/SAR
Probe Name : PCTEST
Field Type : E Field
Orientation : 0 Degrees

Mixture Type = Brain
Mixture Dielectric Constant = 42.900
Mixture Conductivity = 1.650

Comment :
SANYO DUAL BAND PHONE
CHANNEL 0600 CDMA/PCS MODE
0.8 CABLE LOSS

Robot : PCTEST

Probe Offset = 0.25 cm
Sensor Factor = 0.0108
Conversion Factor = 1.200

PCTEST Amplifier Channel Settings : 0.250 0.233 0.225

Diode Coefficients:

Channel 1	An=-52.065	Bn=113.200	Cn=39.840	Dn=0.001	Mn=0.024	Yn=0.000
Channel 2	An=0.000	Bn=0.000	Cn=0.000	Dn=0.000	Mn=0.000	Yn=0.000
Channel 3	An=0.000	Bn=0.000	Cn=0.000	Dn=0.000	Mn=0.000	Yn=0.000

Max Location : X = 1.000, Y = -3.000, Z = 0.000 (cm) Value = 2.394

Measured Values (volts) =

2.214E-003	1.695E-003	1.293E-003	9.387E-004	7.097E-004	5.810E-004
4.322E-004	3.366E-004	2.569E-004	1.939E-004	1.688E-004	1.171E-004
9.539E-005	4.204E-005	6.616E-005	7.303E-005	4.577E-005	3.704E-005
3.910E-005	4.096E-005	3.714E-005			

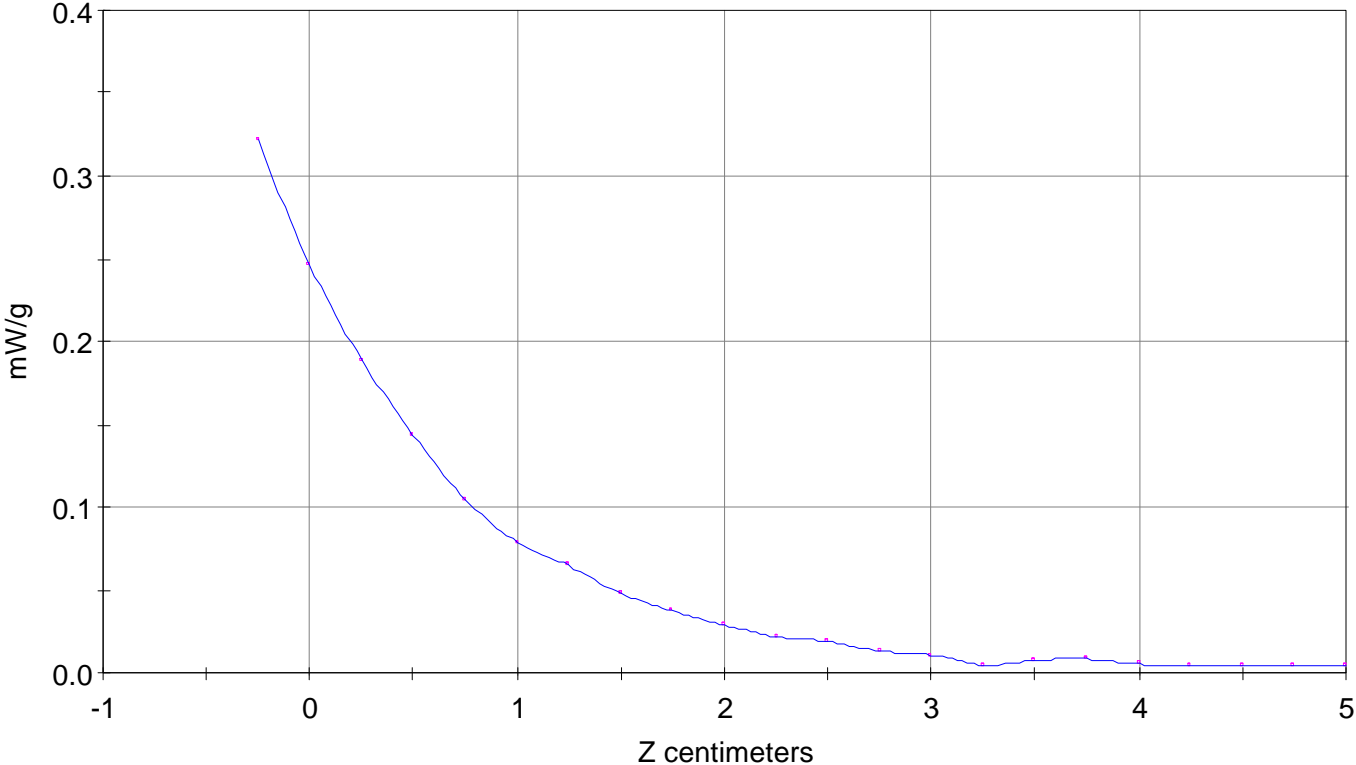
Calc. Voltage @ Surface (Vs) = 0.0029

Voltage @ 1.00 cm (Vt) = 0.0009

Ave. Voltage (Vs+Vt)/2 = 0.0019

Ave. SAR over 1 g (mW/g) = 0.2131

SAR Scan
File : 99051318_ZOOM
Start : 13-May-99 03:50:37 pm End : 13-May-99 03:58:57 pm
SANYO/SCP-4000/002;1880MHz;W;Helical/In;
Head/Left Ear;ZOOM/SAR;PCTEST/E Field/0 DegreesBrain/42.900/1.650



File : c:/idx3/SYSTEM/SARMEAS3/data/Normal/99051319_ZOOM.VLT
Start : 13-May-99 04:06:37 pm End : 13-May-99 04:18:47 pm

Radio Type : SANYO
Model Number : SCP-4000
Serial Number : 002
Frequency : 1880 MHz
Peak Trans. Pwr : 0.200 W
Start Trans. Pwr: 0.200 W
Antenna Type : Helical
Antenna Posn. : Out
Phantom Type : Head
Phantom Posn. : Left Ear
Scan Type : ZOOM/SAR
Probe Name : PCTEST
Field Type : E Field
Orientation : 0 Degrees

Mixture Type = Brain
Mixture Dielectric Constant = 42.900
Mixture Conductivity = 1.650

Comment :
SANYO DUAL BAND PHONE
CHANNEL 0600 CDMA/PCS MODE
0.8 CABLE LOSS

Robot : PCTEST

Probe Offset = 0.25 cm
Sensor Factor = 0.0108
Conversion Factor = 1.200

PCTEST Amplifier Channel Settings : 0.250 0.233 0.225

Diode Coefficients:

Channel 1	An=-52.065	Bn=113.200	Cn=39.840	Dn=0.001	Mn=0.024	Yn=0.000
Channel 2	An=0.000	Bn=0.000	Cn=0.000	Dn=0.000	Mn=0.000	Yn=0.000
Channel 3	An=0.000	Bn=0.000	Cn=0.000	Dn=0.000	Mn=0.000	Yn=0.000

Max Location : X = 1.750, Y = -3.250, Z = 0.000 (cm) Value = 1.447

Measured Values (volts) =

1.391E-003	1.088E-003	7.676E-004	5.925E-004	4.662E-004	3.517E-004
2.693E-004	2.149E-004	1.664E-004	1.244E-004	1.000E-004	8.274E-005
6.989E-005	5.871E-005	4.636E-005	4.998E-005	3.871E-005	3.292E-005
3.577E-005	2.400E-005	2.400E-005			

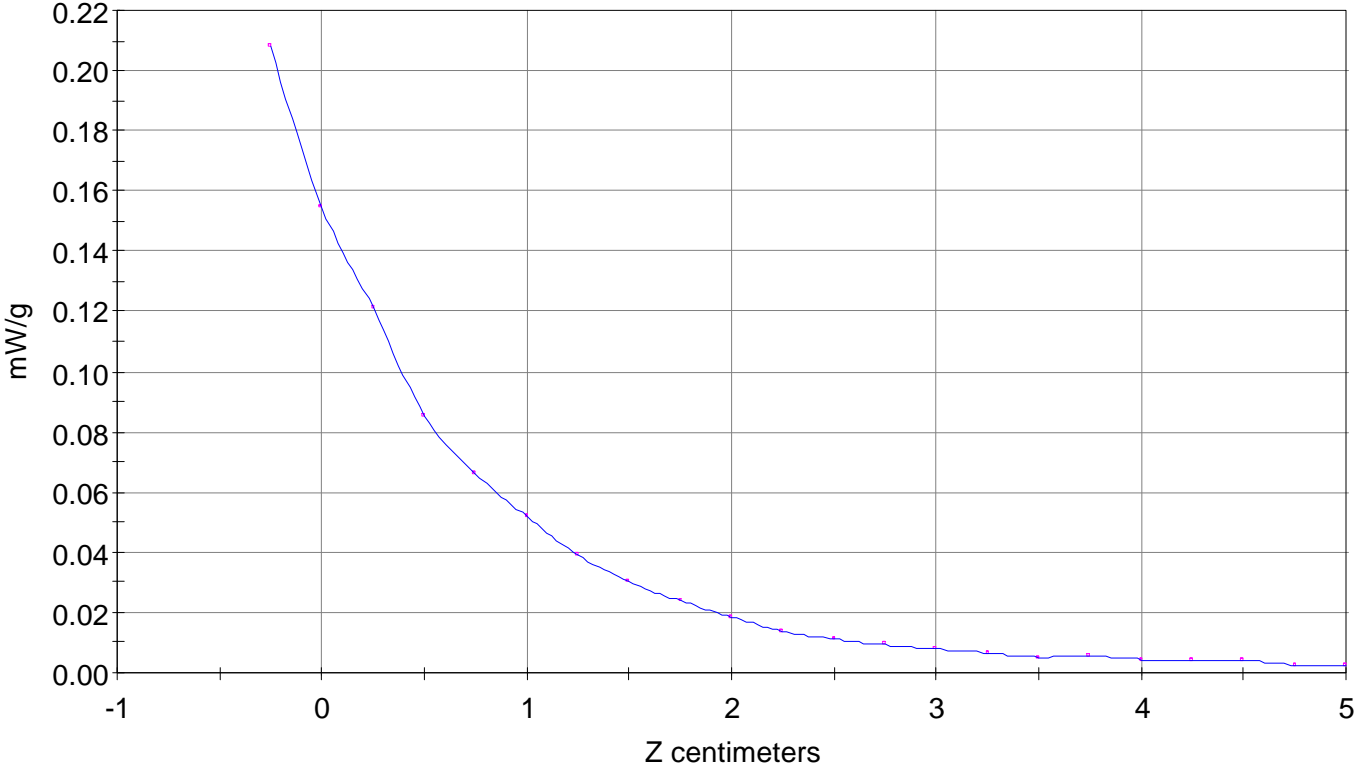
Calc. Voltage @ Surface (Vs) = 0.0019

Voltage @ 1.00 cm (Vt) = 0.0006

Ave. Voltage (Vs+Vt)/2 = 0.0012

Ave. SAR over 1 g (mW/g) = 0.1371

SAR Scan
File : 99051319_ZOOM
Start : 13-May-99 04:06:37 pm End : 13-May-99 04:18:47 pm
SANYO/SCP-4000/002;1880MHz;W;Helical/Out;
Head/Left Ear;ZOOM/SAR;PCTEST/E Field/0 DegreesBrain/42.900/1.650



File : c:/idx3/SYSTEM/SARMEAS3/data/Normal/99051321_ZOOM.VLT
Start : 13-May-99 04:41:44 pm End : 13-May-99 04:53:59 pm

Radio Type : SANYO
Model Number : SCP-4000
Serial Number : 002
Frequency : 1908.75 MHz
Peak Trans. Pwr : 0.200 W
Start Trans. Pwr: 0.200 W
Antenna Type : Helical
Antenna Posn. : In
Phantom Type : Head
Phantom Posn. : Left Ear
Scan Type : ZOOM/SAR
Probe Name : PCTEST
Field Type : E Field
Orientation : 0 Degrees

Mixture Type = Brain
Mixture Dielectric Constant = 42.900
Mixture Conductivity = 1.650

Comment :
SANYO DUAL BAND PHONE
CHANNEL 1175 CDMA/PCS MODE
0.8 CABLE LOSS

Robot : PCTEST

Probe Offset = 0.25 cm
Sensor Factor = 0.0108
Conversion Factor = 1.200

PCTEST Amplifier Channel Settings : 0.250 0.233 0.225

Diode Coefficients:

Channel 1	An=-52.065	Bn=113.200	Cn=39.840	Dn=0.001	Mn=0.024	Yn=0.000
Channel 2	An=0.000	Bn=0.000	Cn=0.000	Dn=0.000	Mn=0.000	Yn=0.000
Channel 3	An=0.000	Bn=0.000	Cn=0.000	Dn=0.000	Mn=0.000	Yn=0.000

Max Location : X = 1.000, Y = -2.750, Z = 0.000 (cm) Value = 1.700

Measured Values (volts) =

1.632E-003	1.131E-003	8.558E-004	6.503E-004	5.055E-004	3.907E-004
3.229E-004	2.377E-004	1.964E-004	1.594E-004	1.201E-004	9.725E-005
8.293E-005	7.244E-005	5.420E-005	6.920E-005	4.508E-005	4.920E-005
4.224E-005	3.439E-005	3.851E-005			

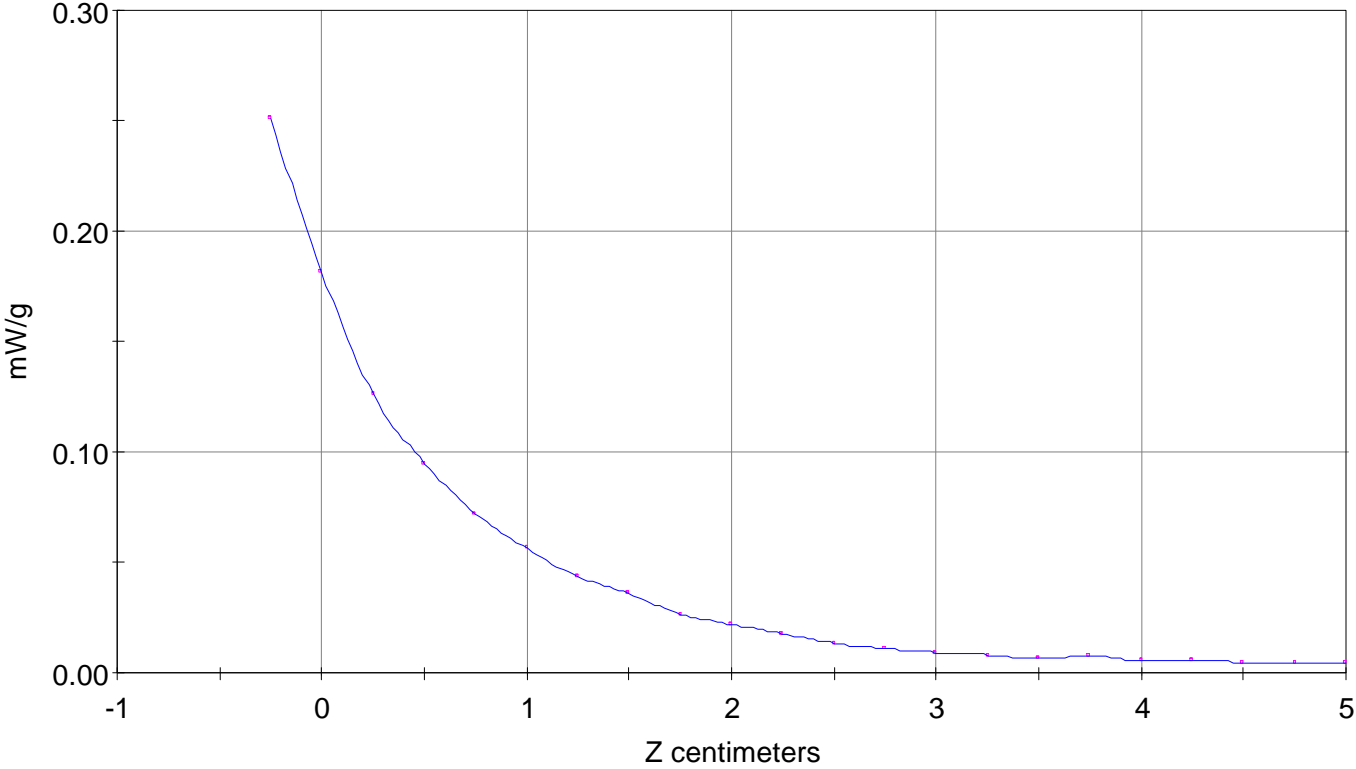
Calc. Voltage @ Surface (Vs) = 0.0023

Voltage @ 1.00 cm (Vt) = 0.0007

Ave. Voltage (Vs+Vt)/2 = 0.0015

Ave. SAR over 1 g (mW/g) = 0.1615

SAR Scan
File : 99051321_ZOOM
Start : 13-May-99 04:41:44 pm End : 13-May-99 04:53:59 pm
SANYO/SCP-4000/002;1908.75MHz;W;Helical/In;
Head/Left Ear;ZOOM/SAR;PCTEST/E Field/0 DegreesBrain/42.900/1.650



File : c:/idx3/SYSTEM/SARMEAS3/data/Normal/99051322_ZOOM.VLT
Start : 13-May-99 05:01:43 pm End : 13-May-99 05:14:01 pm

Radio Type : SANYO
Model Number : SCP-4000
Serial Number : 002
Frequency : 1908.75 MHz
Peak Trans. Pwr : 0.200 W
Start Trans. Pwr: 0.200 W
Antenna Type : Helical
Antenna Posn. : Out
Phantom Type : Head
Phantom Posn. : Left Ear
Scan Type : ZOOM/SAR
Probe Name : PCTEST
Field Type : E Field
Orientation : 0 Degrees

Mixture Type = Brain
Mixture Dielectric Constant = 42.900
Mixture Conductivity = 1.650

Comment :
SANYO DUAL BAND PHONE
CHANNEL 1175 CDMA/PCS MODE
0.8 CABLE LOSS

Robot : PCTEST

Probe Offset = 0.25 cm
Sensor Factor = 0.0108
Conversion Factor = 1.200

PCTEST Amplifier Channel Settings : 0.250 0.233 0.225

Diode Coefficients:

Channel 1	An=-52.065	Bn=113.200	Cn=39.840	Dn=0.001	Mn=0.024	Yn=0.000
Channel 2	An=0.000	Bn=0.000	Cn=0.000	Dn=0.000	Mn=0.000	Yn=0.000
Channel 3	An=0.000	Bn=0.000	Cn=0.000	Dn=0.000	Mn=0.000	Yn=0.000

Max Location : X = 1.000, Y = -2.500, Z = 0.000 (cm) Value = 1.246

Measured Values (volts) =

1.170E-003	8.685E-004	6.105E-004	4.924E-004	3.732E-004	2.810E-004
2.119E-004	1.783E-004	1.436E-004	1.188E-004	8.882E-005	7.970E-005
5.597E-005	6.509E-005	4.714E-005	5.047E-005	4.773E-005	4.469E-005
3.410E-005	4.704E-005	4.479E-005			

Calc. Voltage @ Surface (Vs) = 0.0016

Voltage @ 1.00 cm (Vt) = 0.0005

Ave. Voltage (Vs+Vt)/2 = 0.0011

Ave. SAR over 1 g (mW/g) = 0.1174

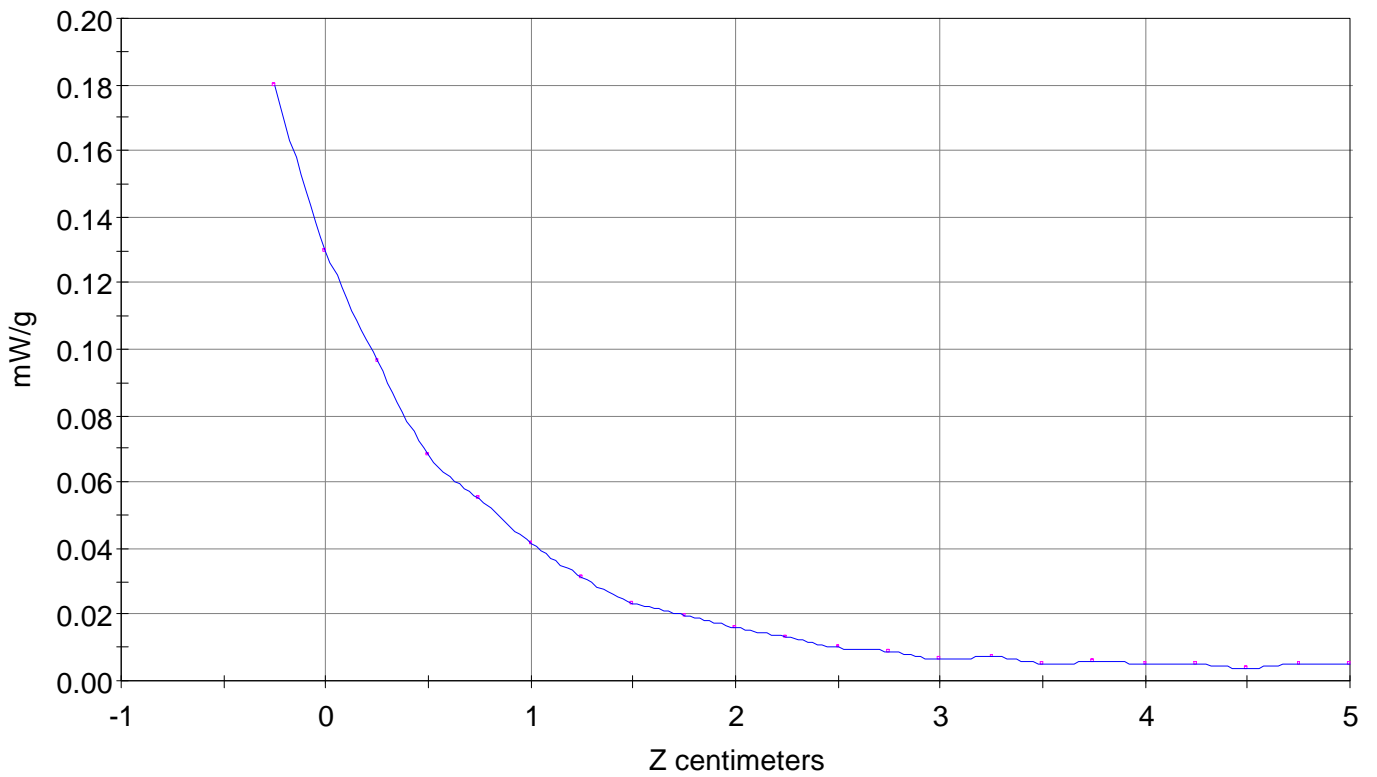
SAR Scan

File : 99051322_ZOOM

Start : 13-May-99 05:01:43 pm End : 13-May-99 05:14:01 pm

SANYO/SCP-4000/002;1908.75MHz;W;Helical/Out;

Head/Left Ear;ZOOM/SAR;PCTEST/E Field/0 DegreesBrain/42.900/1.650



File : c:/idx3/SYSTEM/SARMEAS3/data/Normal/99051306_ZOOM.VLT
Start : 13-May-99 12:10:59 pm End : 13-May-99 12:30:33 pm

Radio Type : SANYO
Model Number : SCP-4000
Serial Number : 002
Frequency : 824.04 MHz
Peak Trans. Pwr : 0.420 W
Start Trans. Pwr: 0.420 W
Antenna Type : Helical
Antenna Posn. : In
Phantom Type : Head
Phantom Posn. : Left Ear
Scan Type : ZOOM/SAR
Probe Name : PCTEST
Field Type : E Field
Orientation : 0 Degrees

Mixture Type = Brain
Mixture Dielectric Constant = 43.400
Mixture Conductivity = 0.900

Comment :
SANYO DUAL BAND PHONE
CHANNEL 991 FM MODE
0.6 CABLE LOSS

Robot : PCTEST

Probe Offset = 0.25 cm
Sensor Factor = 0.0108
Conversion Factor = 0.790

PCTEST Amplifier Channel Settings : 0.168 0.136 0.132

Diode Coefficients:

Channel 1	An=-10.851	Bn=86.223	Cn=38.593	Dn=-0.016	Mn=0.026	Yn=0.000
Channel 2	An=-21.618	Bn=92.335	Cn=34.909	Dn=-0.019	Mn=0.029	Yn=0.000
Channel 3	An=-11.171	Bn=50.619	Cn=19.002	Dn=-0.025	Mn=0.052	Yn=0.001

Max Location : X = 0.000, Y = -1.000, Z = 0.000 (cm) Value = 24.985

Measured Values (volts) =

2.228E-002	1.758E-002	1.423E-002	1.158E-002	9.514E-003	7.696E-003
6.313E-003	5.113E-003	4.087E-003	3.134E-003	2.460E-003	1.763E-003
1.220E-003	7.667E-004	4.103E-004	1.441E-004	-4.973E-005	-2.144E-004
-2.836E-004	-4.327E-004	-5.350E-004			

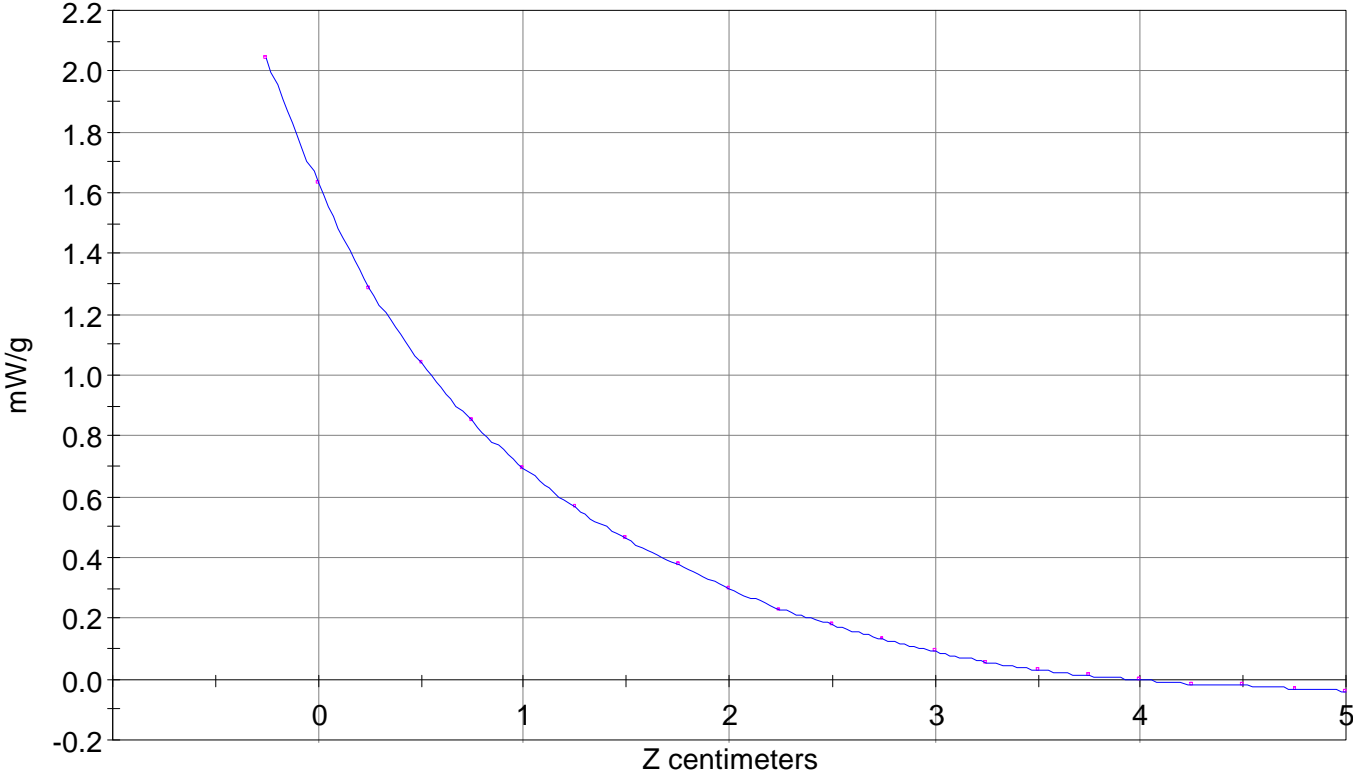
Calc. Voltage @ Surface (Vs) = 0.0279

Voltage @ 1.00 cm (Vt) = 0.0116

Ave. Voltage (Vs+Vt)/2 = 0.0197

Ave. SAR over 1 g (mW/g) = 1.4434

SAR Scan
File : 99051306_ZOOM
Start : 13-May-99 12:10:59 pm End : 13-May-99 12:30:33 pm
SANYO/SCP-4000/002;824.04MHz;W;Helical/In;
Head/Left Ear;ZOOM/SAR;PCTEST/E Field/0 DegreesBrain/43.400/0.900

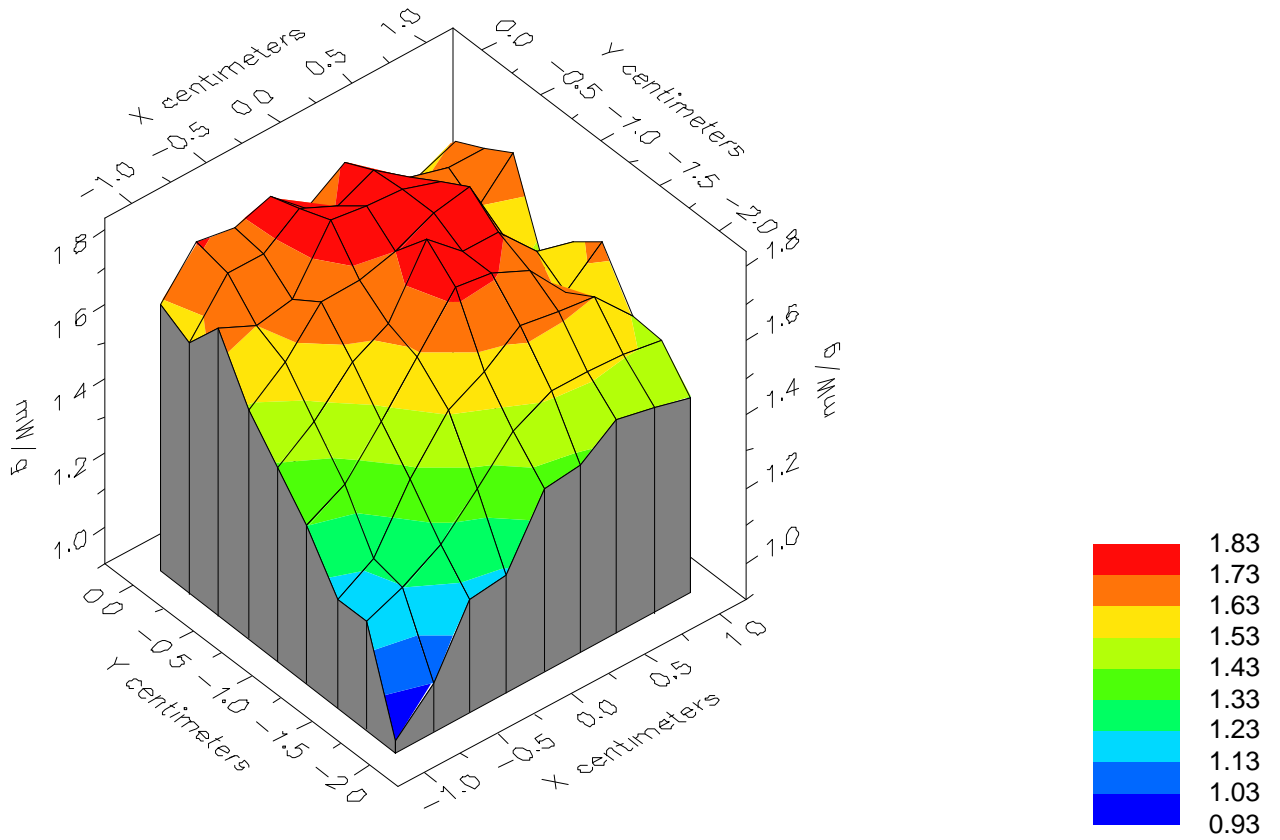


File : 99051306_ZOOM

Start : 13-May-99 12:10:59 pm End : 13-May-99 12:30:33 pm

SANYO/SCP-4000/002;824.04MHz;W;Helical/In;

Head/Left Ear;ZOOM/SAR;PCTEST/E Field/0 DegreesBrain/43.400/0.900

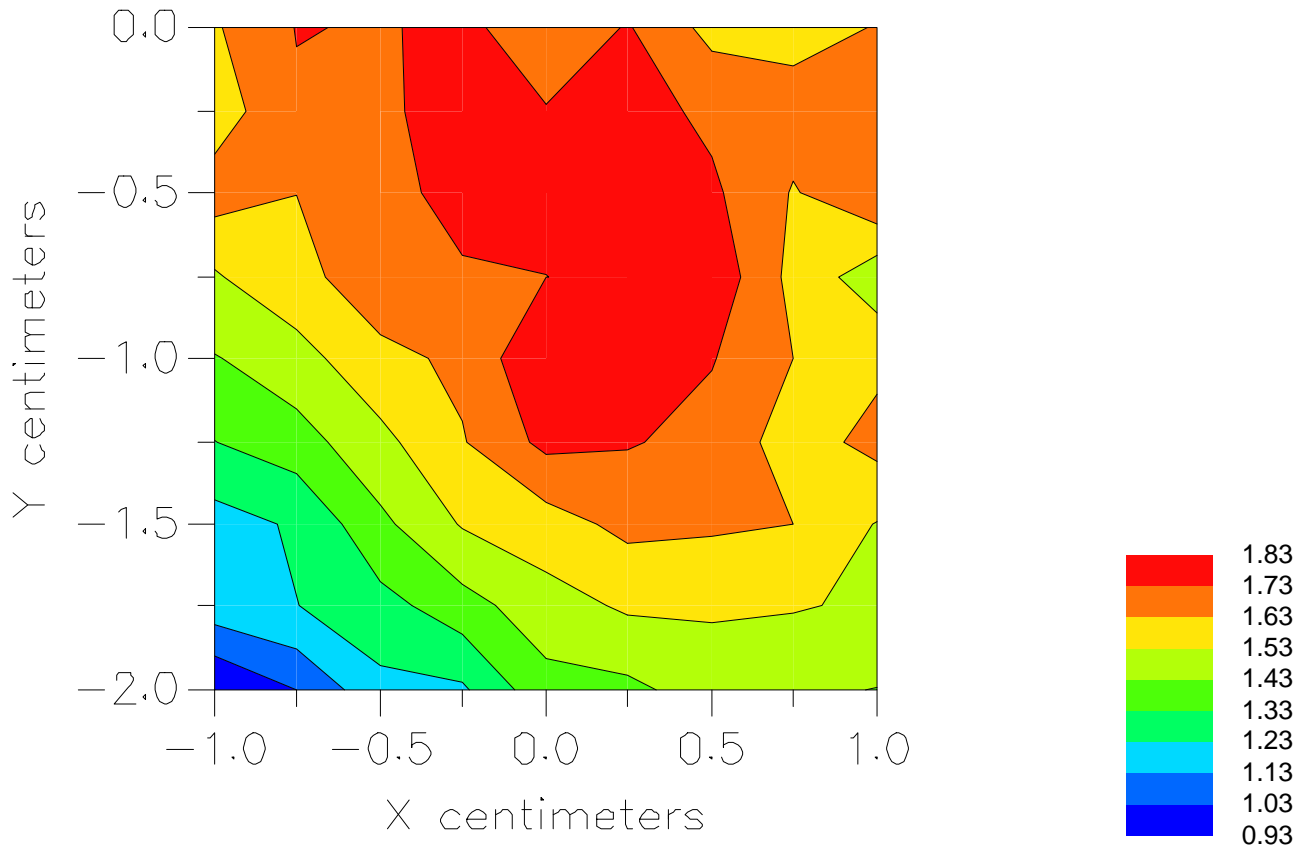


File : 99051306_ZOOM

Start : 13-May-99 12:10:59 pm End : 13-May-99 12:30:33 pm

SANYO/SCP-4000/002;824.04MHz;W;Helical/In;

Head/Left Ear;ZOOM/SAR;PCTEST/E Field/0 DegreesBrain/43.400/0.900



File : c:/idx3/SYSTEM/SARMEAS3/data/Normal/99051304_ZOOM.VLT
Start : 13-May-99 11:00:03 am End : 13-May-99 11:08:10 am

Radio Type : SANYO
Model Number : SCP-4000
Serial Number : 002
Frequency : 824.04 MHz
Peak Trans. Pwr : 0.420 W
Start Trans. Pwr: 0.420 W
Antenna Type : Helical
Antenna Posn. : Out
Phantom Type : Head
Phantom Posn. : Left Ear
Scan Type : ZOOM/SAR
Probe Name : PCTEST
Field Type : E Field
Orientation : 0 Degrees

Mixture Type = Brain
Mixture Dielectric Constant = 43.400
Mixture Conductivity = 0.900

Comment :
SANYO DUAL BAND PHONE
CHANNEL 991 FM MODE
0.6 CABLE LOSS

Robot : PCTEST

Probe Offset = 0.25 cm
Sensor Factor = 0.0108
Conversion Factor = 0.790

PCTEST Amplifier Channel Settings : 0.168 0.136 0.132

Diode Coefficients:

Channel 1	An=-10.851	Bn=86.223	Cn=38.593	Dn=-0.016	Mn=0.026	Yn=0.000
Channel 2	An=-21.618	Bn=92.335	Cn=34.909	Dn=-0.019	Mn=0.029	Yn=0.000
Channel 3	An=-11.171	Bn=50.619	Cn=19.002	Dn=-0.025	Mn=0.052	Yn=0.001

Max Location : X = 0.500, Y = -0.750, Z = 0.000 (cm) Value = 18.211

Measured Values (volts) =

1.662E-002	1.259E-002	1.035E-002	8.142E-003	6.376E-003	5.103E-003
4.284E-003	3.550E-003	2.619E-003	2.168E-003	1.544E-003	1.142E-003
6.770E-004	3.689E-004	8.440E-005	-1.364E-004	-3.651E-004	-4.441E-004
-5.391E-004	-6.406E-004	-7.353E-004			

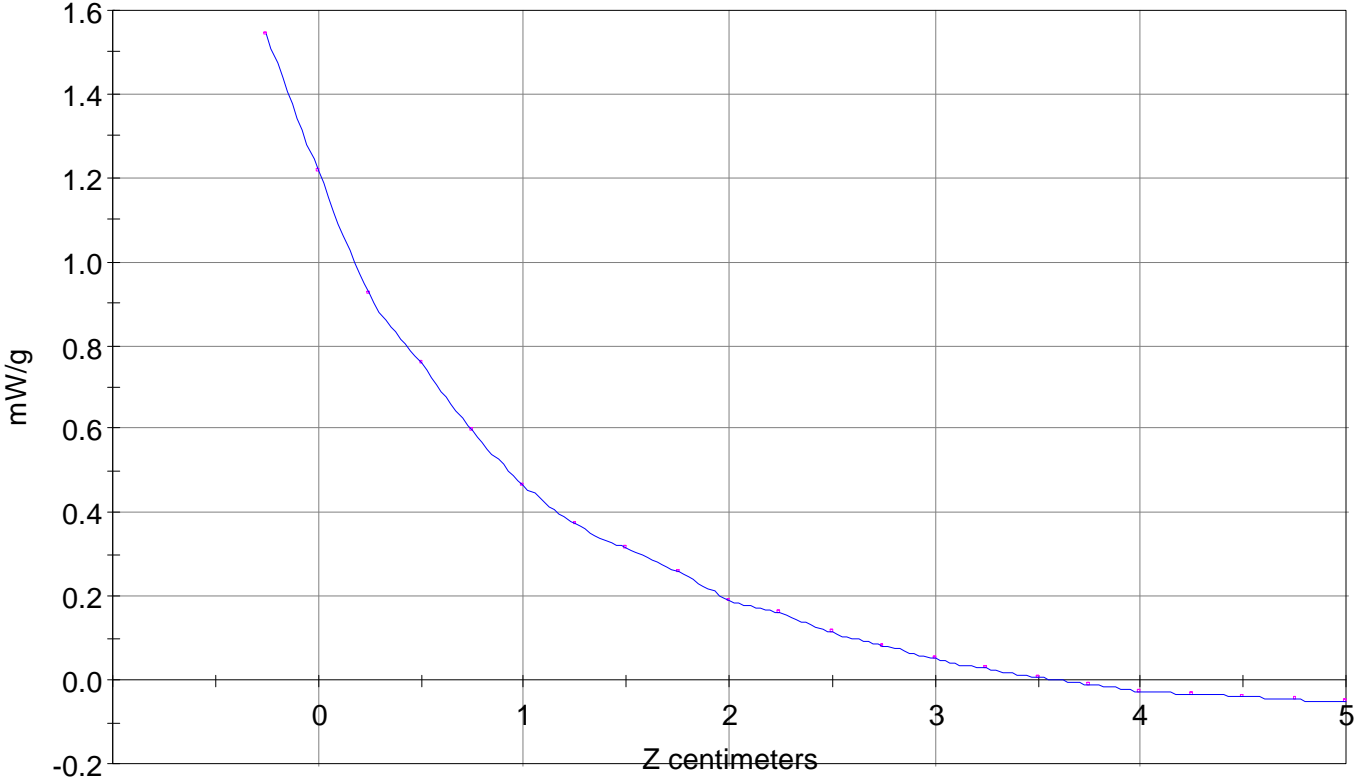
Calc. Voltage @ Surface (Vs) = 0.0211

Voltage @ 1.00 cm (Vt) = 0.0081

Ave. Voltage (Vs+Vt)/2 = 0.0146

Ave. SAR over 1 g (mW/g) = 1.0688

SAR Scan
File : 99051304_ZOOM
Start : 13-May-99 11:00:03 am End : 13-May-99 11:08:10 am
SANYO/SCP-4000/002;824.04MHz;W;Helical/Out;
Head/Left Ear;ZOOM/SAR;PCTEST/E Field/0 DegreesBrain/43.400/0.900



File : c:/idx3/SYSTEM/SARMEAS3/data/Normal/99051303_ZOOM.VLT
Start : 13-May-99 10:30:19 am End : 13-May-99 10:38:27 am

Radio Type : SANYO
Model Number : SCP-4000
Serial Number : 002
Frequency : 836.49 MHz
Peak Trans. Pwr : 0.410 W
Start Trans. Pwr: 0.410 W
Antenna Type : Helical
Antenna Posn. : IN
Phantom Type : Head
Phantom Posn. : Left Ear
Scan Type : ZOOM/SAR
Probe Name : PCTEST
Field Type : E Field
Orientation : 0 Degrees

Mixture Type = Brain
Mixture Dielectric Constant = 43.400
Mixture Conductivity = 0.900

Comment :
SANYO DUAL BAND PHONE
CHANNEL 383 FM MODE
0.6 CABLE LOSS

Robot : PCTEST

Probe Offset = 0.25 cm
Sensor Factor = 0.0108
Conversion Factor = 0.790

PCTEST Amplifier Channel Settings : 0.168 0.136 0.132

Diode Coefficients:

Channel 1	An=-10.851	Bn=86.223	Cn=38.593	Dn=-0.016	Mn=0.026	Yn=0.000
Channel 2	An=-21.618	Bn=92.335	Cn=34.909	Dn=-0.019	Mn=0.029	Yn=0.000
Channel 3	An=-11.171	Bn=50.619	Cn=19.002	Dn=-0.025	Mn=0.052	Yn=0.001

Max Location : X = 0.500, Y = -0.750, Z = 0.000 (cm) Value = 9.655

Measured Values (volts) =

8.928E-003	6.588E-003	5.199E-003	4.076E-003	3.132E-003	2.384E-003
1.817E-003	1.309E-003	8.658E-004	5.130E-004	2.042E-004	-6.233E-005
-3.018E-004	-4.599E-004	-6.419E-004	-7.738E-004	-8.690E-004	-9.301E-004
-1.004E-003	-1.077E-003	-1.078E-003			

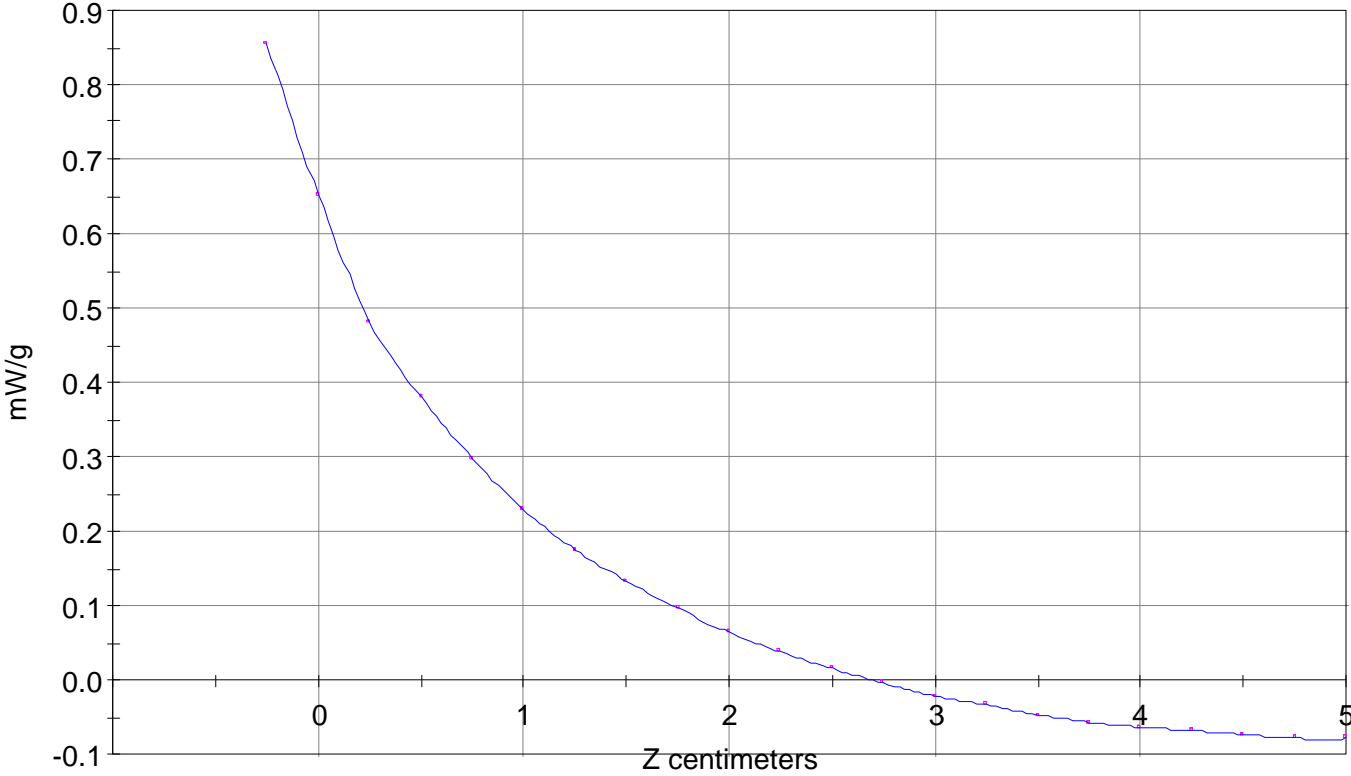
Calc. Voltage @ Surface (Vs) = 0.0117

Voltage @ 1.00 cm (Vt) = 0.0041

Ave. Voltage (Vs+Vt)/2 = 0.0079

Ave. SAR over 1 g (mW/g) = 0.5773

SAR Scan
File : 99051303_ZOOM
Start : 13-May-99 10:30:19 am End : 13-May-99 10:38:27 am
SANYO/SCP-4000/002;836.49MHz;W;Helical/In;
Head/Left Ear;ZOOM/SAR;PCTEST/E Field/0 DegreesBrain/43.400/0.900



File : c:/idx3/SYSTEM/SARMEAS3/data/Normal/99051302_ZOOM.VLT
Start : 13-May-99 09:34:57 am End : 13-May-99 09:47:01 am

Radio Type : SANYO
Model Number : SCP-4000
Serial Number : 002
Frequency : 836.49 MHz
Peak Trans. Pwr : 0.410 W
Start Trans. Pwr: 0.410 W
Antenna Type : Helical
Antenna Posn. : Out
Phantom Type : Head
Phantom Posn. : Left Ear
Scan Type : ZOOM/SAR
Probe Name : PCTEST
Field Type : E Field
Orientation : 0 Degrees

Mixture Type = Brain
Mixture Dielectric Constant = 43.400
Mixture Conductivity = 0.900

Comment :
SANYO DUAL BAND PHONE
CHANNEL 383 FM MODE
0.6 CABLE LOSS

Robot : PCTEST

Probe Offset = 0.25 cm
Sensor Factor = 0.0108
Conversion Factor = 0.790

PCTEST Amplifier Channel Settings : 0.168 0.136 0.132

Diode Coefficients:

Channel 1	An=-10.851	Bn=86.223	Cn=38.593	Dn=-0.016	Mn=0.026	Yn=0.000
Channel 2	An=-21.618	Bn=92.335	Cn=34.909	Dn=-0.019	Mn=0.029	Yn=0.000
Channel 3	An=-11.171	Bn=50.619	Cn=19.002	Dn=-0.025	Mn=0.052	Yn=0.001

Max Location : X = 0.250, Y = -0.250, Z = 0.000 (cm) Value = 9.585

Measured Values (volts) =

9.294E-003	6.934E-003	5.440E-003	4.260E-003	3.331E-003	2.591E-003
1.999E-003	1.424E-003	1.000E-003	6.910E-004	3.577E-004	8.401E-005
-1.443E-004	-3.496E-004	-5.084E-004	-6.484E-004	-7.310E-004	-8.087E-004
-8.636E-004	-9.110E-004	-9.758E-004			

Calc. Voltage @ Surface (Vs) = 0.0122

Voltage @ 1.00 cm (Vt) = 0.0043

Ave. Voltage (Vs+Vt)/2 = 0.0082

Ave. SAR over 1 g (mW/g) = 0.6003

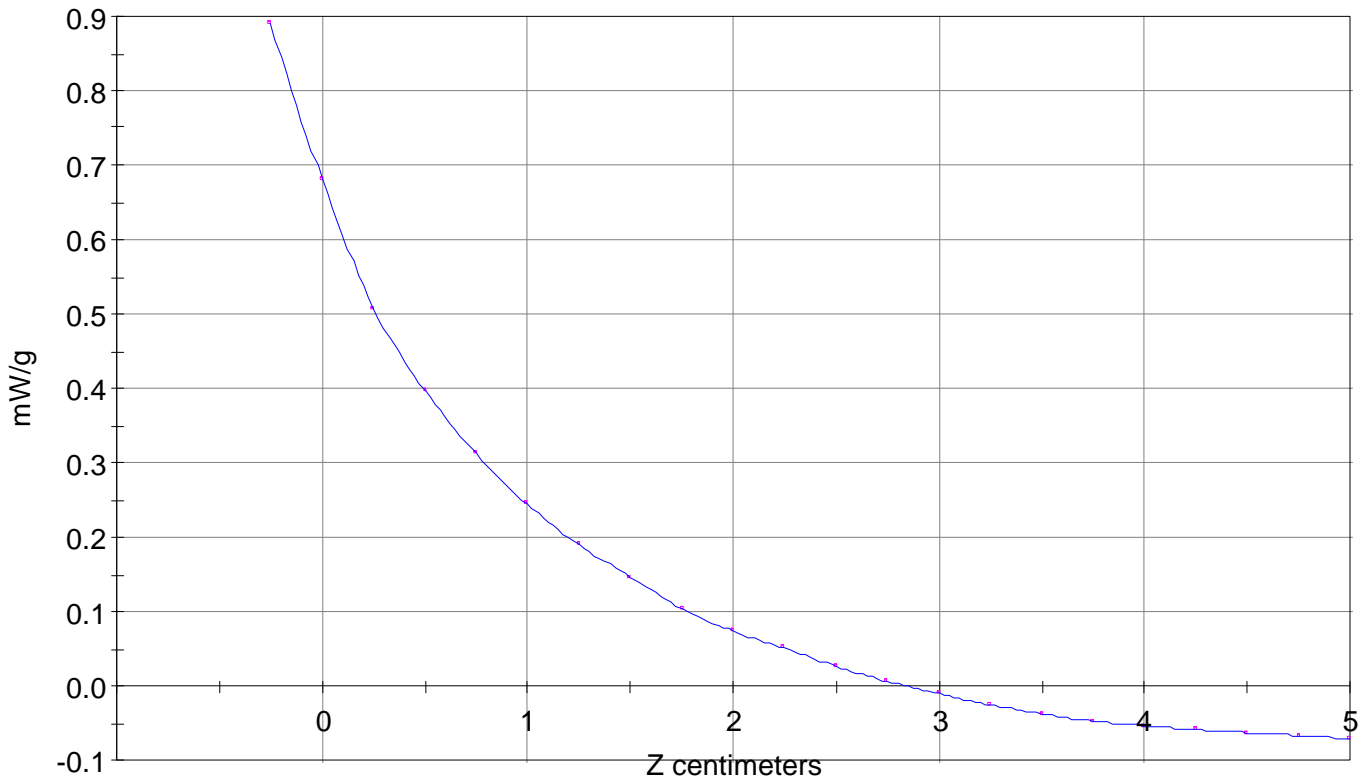
SAR Scan

File : 99051302_ZOOM

Start : 13-May-99 09:34:57 am End : 13-May-99 09:47:01 am

SANYO/SCP-4000/002;836.49MHz;W;Helical/Out;

Head/Left Ear;ZOOM/SAR;PCTEST/E Field/0 DegreesBrain/43.400/0.900



File : c:/idx3/SYSTEM/SARMEAS3/data/Normal/99051308_ZOOM.VLT
Start : 13-May-99 01:39:44 pm End : 13-May-99 01:47:51 pm

Radio Type : SANYO
Model Number : SCP-4000
Serial Number : 002
Frequency : 848.97 MHz
Peak Trans. Pwr : 0.420 W
Start Trans. Pwr: 0.420 W
Antenna Type : Helical
Antenna Posn. : In
Phantom Type : Head
Phantom Posn. : Left Ear
Scan Type : ZOOM/SAR
Probe Name : PCTEST
Field Type : E Field
Orientation : 0 Degrees

Mixture Type = Brain
Mixture Dielectric Constant = 43.400
Mixture Conductivity = 0.900

Comment :
SANYO DUAL BAND PHONE
CHANNEL 799 FM MODE
0.6 CABLE LOSS

Robot : PCTEST

Probe Offset = 0.25 cm
Sensor Factor = 0.0108
Conversion Factor = 0.790

PCTEST Amplifier Channel Settings : 0.168 0.136 0.132

Diode Coefficients:

Channel 1	An=-10.851	Bn=86.223	Cn=38.593	Dn=-0.016	Mn=0.026	Yn=0.000
Channel 2	An=-21.618	Bn=92.335	Cn=34.909	Dn=-0.019	Mn=0.029	Yn=0.000
Channel 3	An=-11.171	Bn=50.619	Cn=19.002	Dn=-0.025	Mn=0.052	Yn=0.001

Max Location : X = 0.250, Y = -0.500, Z = 0.000 (cm) Value = 21.640

Measured Values (volts) =

2.051E-002	1.601E-002	1.297E-002	9.787E-003	8.470E-003	6.954E-003
5.694E-003	4.599E-003	3.735E-003	2.946E-003	2.330E-003	1.758E-003
1.268E-003	8.507E-004	4.942E-004	2.150E-004	5.715E-005	-8.615E-005
-1.850E-004	-3.011E-004	-3.456E-004			

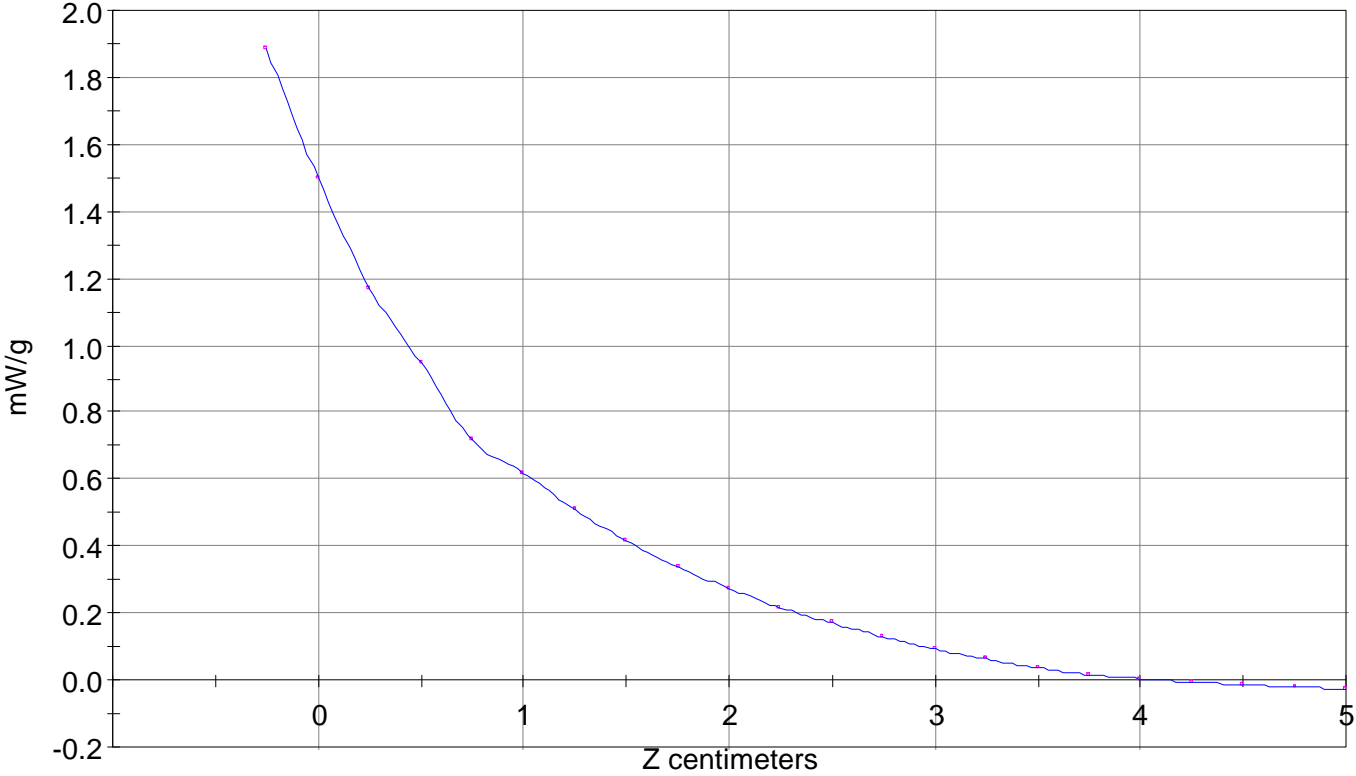
Calc. Voltage @ Surface (Vs) = 0.0258

Voltage @ 1.00 cm (Vt) = 0.0098

Ave. Voltage (Vs+Vt)/2 = 0.0178

Ave. SAR over 1 g (mW/g) = 1.3012

SAR Scan
File : 99051308_ZOOM
Start : 13-May-99 01:39:44 pm End : 13-May-99 01:47:51 pm
SANYO/SCP-4000/002;848.97MHz;W;Helical/In;
Head/Left Ear;ZOOM/SAR;PCTEST/E Field/0 DegreesBrain/43.400/0.900



File : c:/idx3/SYSTEM/SARMEAS3/data/Normal/99051307_ZOOM.VLT
Start : 13-May-99 01:26:56 pm End : 13-May-99 01:35:06 pm

Radio Type : SANYO
Model Number : SCP-4000
Serial Number : 002
Frequency : 848.97 MHz
Peak Trans. Pwr : 0.420 W
Start Trans. Pwr: 0.420 W
Antenna Type : Helical
Antenna Posn. : Out
Phantom Type : Head
Phantom Posn. : Left Ear
Scan Type : ZOOM/SAR
Probe Name : PCTEST
Field Type : E Field
Orientation : 0 Degrees

Mixture Type = Brain
Mixture Dielectric Constant = 43.400
Mixture Conductivity = 0.900

Comment :
SANYO DUAL BAND PHONE
CHANNEL 799 FM MODE
0.6 CABLE LOSS

Robot : PCTEST

Probe Offset = 0.25 cm
Sensor Factor = 0.0108
Conversion Factor = 0.790

PCTEST Amplifier Channel Settings : 0.168 0.136 0.132

Diode Coefficients:

Channel 1	An=-10.851	Bn=86.223	Cn=38.593	Dn=-0.016	Mn=0.026	Yn=0.000
Channel 2	An=-21.618	Bn=92.335	Cn=34.909	Dn=-0.019	Mn=0.029	Yn=0.000
Channel 3	An=-11.171	Bn=50.619	Cn=19.002	Dn=-0.025	Mn=0.052	Yn=0.001

Max Location : X = 0.500, Y = -1.000, Z = 0.000 (cm) Value = 21.796

Measured Values (volts) =

1.966E-002	1.543E-002	1.212E-002	9.994E-003	8.283E-003	7.257E-003
6.002E-003	4.914E-003	4.022E-003	3.294E-003	2.578E-003	2.064E-003
1.555E-003	1.186E-003	7.841E-004	6.157E-004	4.066E-004	2.469E-004
1.306E-004	4.059E-005	-6.444E-005			

Calc. Voltage @ Surface (Vs) = 0.0250

Voltage @ 1.00 cm (Vt) = 0.0100

Ave. Voltage (Vs+Vt)/2 = 0.0175

Ave. SAR over 1 g (mW/g) = 1.2810

SAR Scan
File : 99051307_ZOOM
Start : 13-May-99 01:26:56 pm End : 13-May-99 01:35:06 pm
SANYO/SCP-4000/002;848.97MHz;W;Helical/Out;
Head/Left Ear;ZOOM/SAR;PCTEST/E Field/0 DegreesBrain/43.400/0.900

