

# SANYO FCC ID: AEZSCP-49H -- PCS CDMA Head SAR

SAM Phantom; Left Hand Section; Probe:ET3DV6 - SN1560 -- Probe Cal Date 20/02/02; ConvF(5.16,5.16,5.16)  
Med. Parameters 1900 MHz Brain:  $\sigma = 1.44$  mho/m  $\epsilon_r = 40.3$   $\rho = 1.00$  g/cm<sup>3</sup>; Antenna Position -- In; Crest Factor 1.0

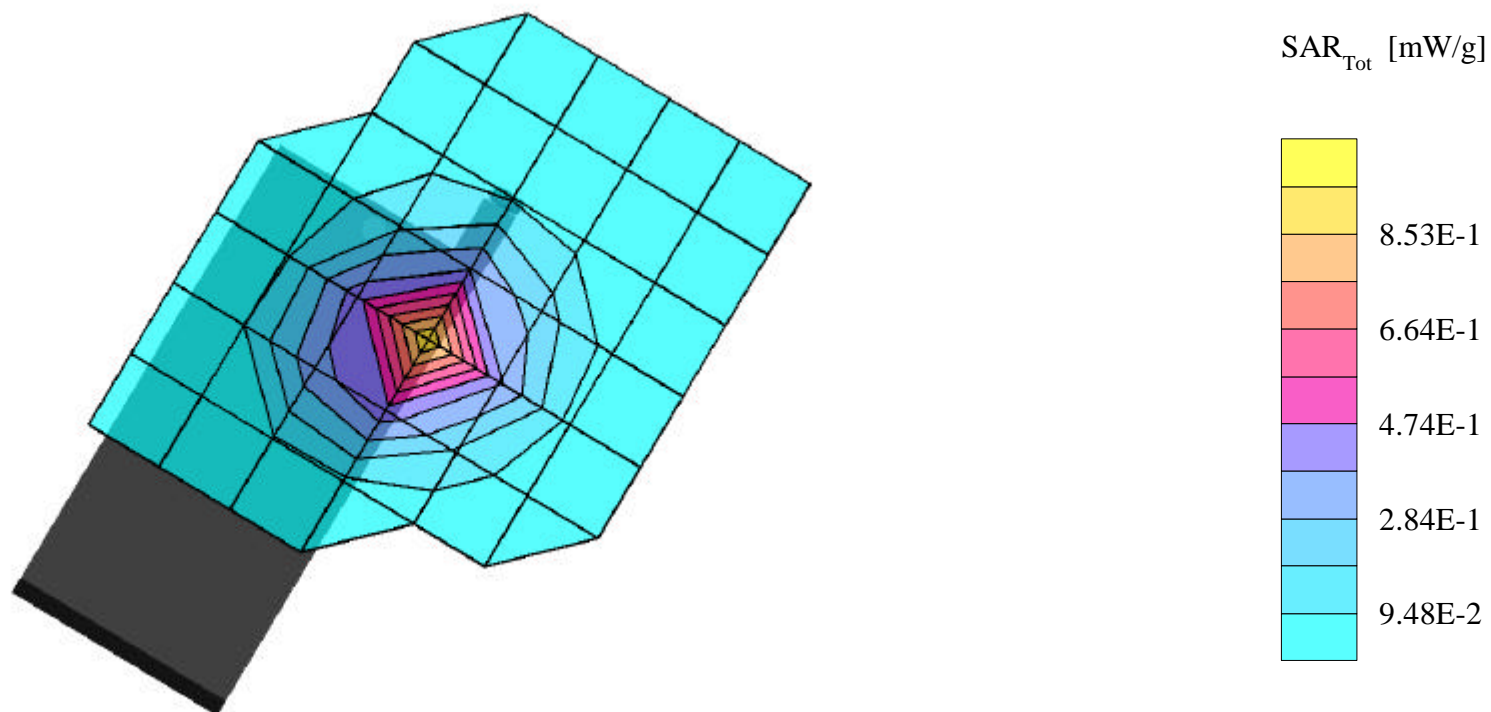
**SAR (1g): 0.931 mW/g, SAR (10g): 0.527 mW/g**

SANYO Dual Mode: SCP-4900 [S/N: F7040ECE]

PCS CDMA Mode, Ch.0025 [1851.25MHz]; Extended Battery; Measured tissue temp. = 21.2°

Conducted Power = 23.5dBm; Left Head SAR, Ear/15degree Tilt position

Test Date -- 03/23/2002 [FCC/OET Bulletin 65 - Supplement C, July 2001]



# SANYO FCC ID: AEZSCP-49H -- PCS CDMA Head SAR

SAM Phantom; Left Hand Section; Probe:ET3DV6 - SN1560 -- Probe Cal Date 20/02/02; ConvF(5.16,5.16,5.16)  
Med. Parameters 1900 MHz Brain:  $\sigma = 1.44$  mho/m  $\epsilon_r = 40.3$   $\rho = 1.00$  g/cm<sup>3</sup>; Antenna Position -- Out; Crest Factor 1.0

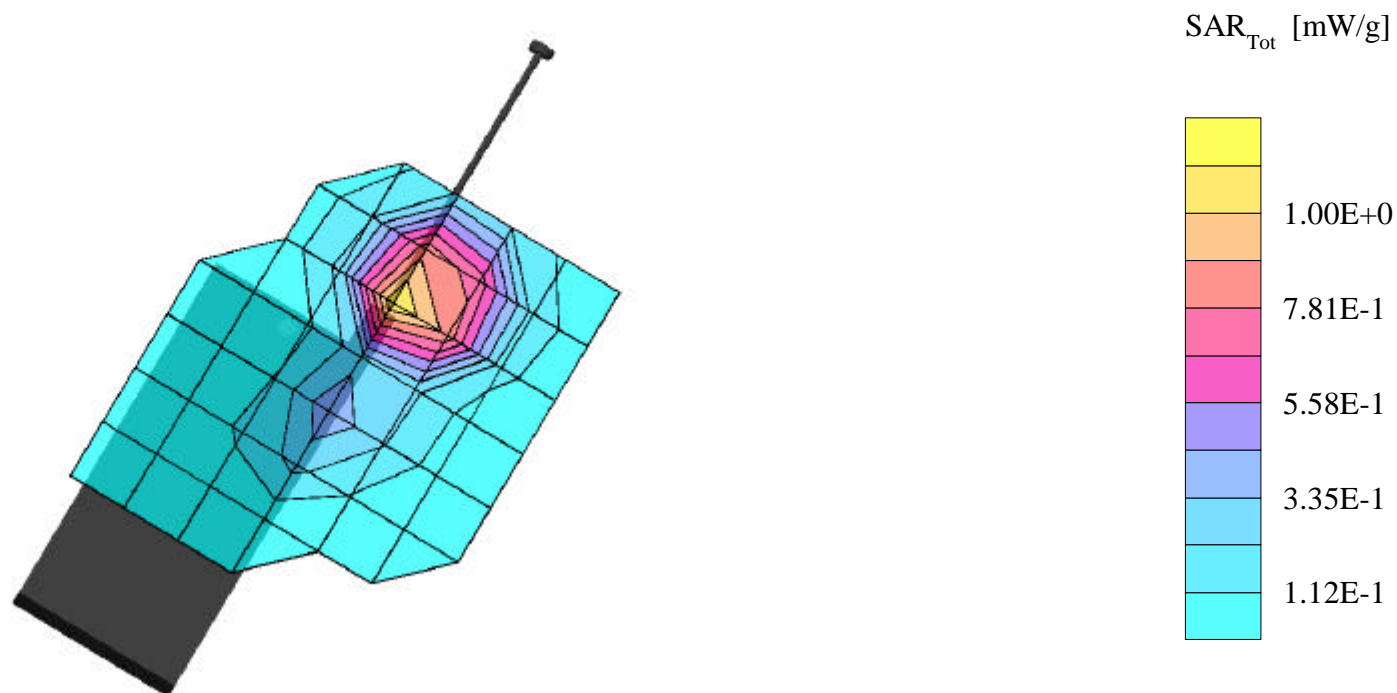
**SAR (1g): 1.36 mW/g, SAR (10g): 0.799 mW/g**

SANYO Dual Mode: SCP-4900 [S/N: F7040ECE]

PCS CDMA Mode, Ch.0025 [1851.25MHz]; Extended Battery; Measured tissue temp. = 21.2°

Conducted Power = 23.5dBm; Left Head SAR, Ear/15degree Tilt position

Test Date -- 03/23/2002 [FCC/OET Bulletin 65 - Supplement C, July 2001]



# SANYO FCC ID: AEZSCP-49H -- PCS CDMA Head SAR

SAM Phantom; Left Hand Section; Probe:ET3DV6 - SN1560 -- Probe Cal Date 20/02/02; ConvF(5.16,5.16,5.16)  
Med. Parameters 1900 MHz Brain:  $\sigma = 1.44$  mho/m  $\epsilon_r = 40.3$   $\rho = 1.00$  g/cm<sup>3</sup>; Antenna Position -- In; Crest Factor 1.0

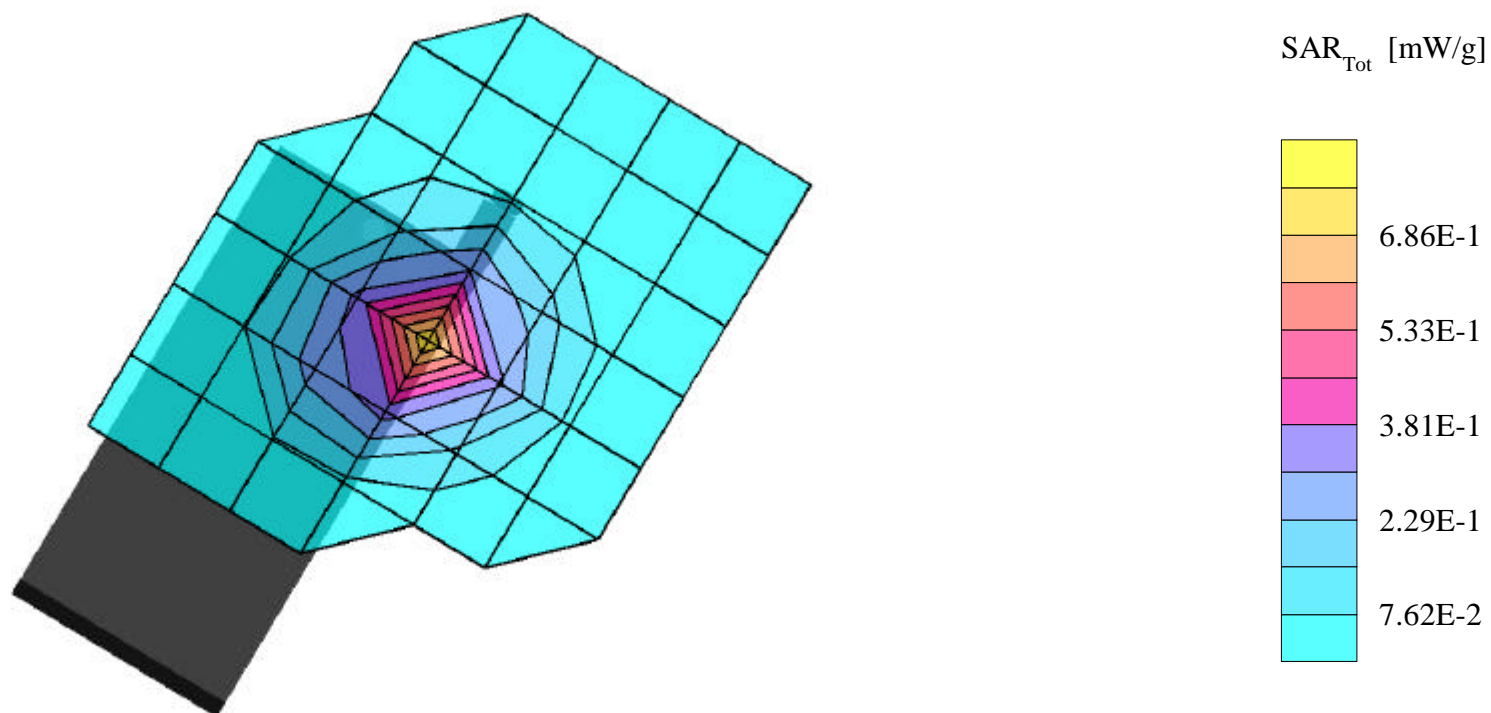
**SAR (1g): 0.747 mW/g, SAR (10g): 0.416 mW/g**

SANYO Dual Mode: SCP-4900 [S/N: F7040ECE]

PCS CDMA Mode, Ch.0600 [1880.00MHz]; Extended Battery; Measured tissue temp. = 21.2°

Conducted Power = 23.5dBm; Left Head SAR, Ear/15degree Tilt position

Test Date -- 03/23/2002 [FCC/OET Bulletin 65 - Supplement C, July 2001]



# SANYO FCC ID: AEZSCP-49H -- PCS CDMA Head SAR

SAM Phantom; Left Hand Section; Probe:ET3DV6 - SN1560 -- Probe Cal Date 20/02/02; ConvF(5.16,5.16,5.16)  
Med. Parameters 1900 MHz Brain:  $\sigma = 1.44$  mho/m  $\epsilon_r = 40.3$   $\rho = 1.00$  g/cm<sup>3</sup>; Antenna Position -- Out; Crest Factor 1.0

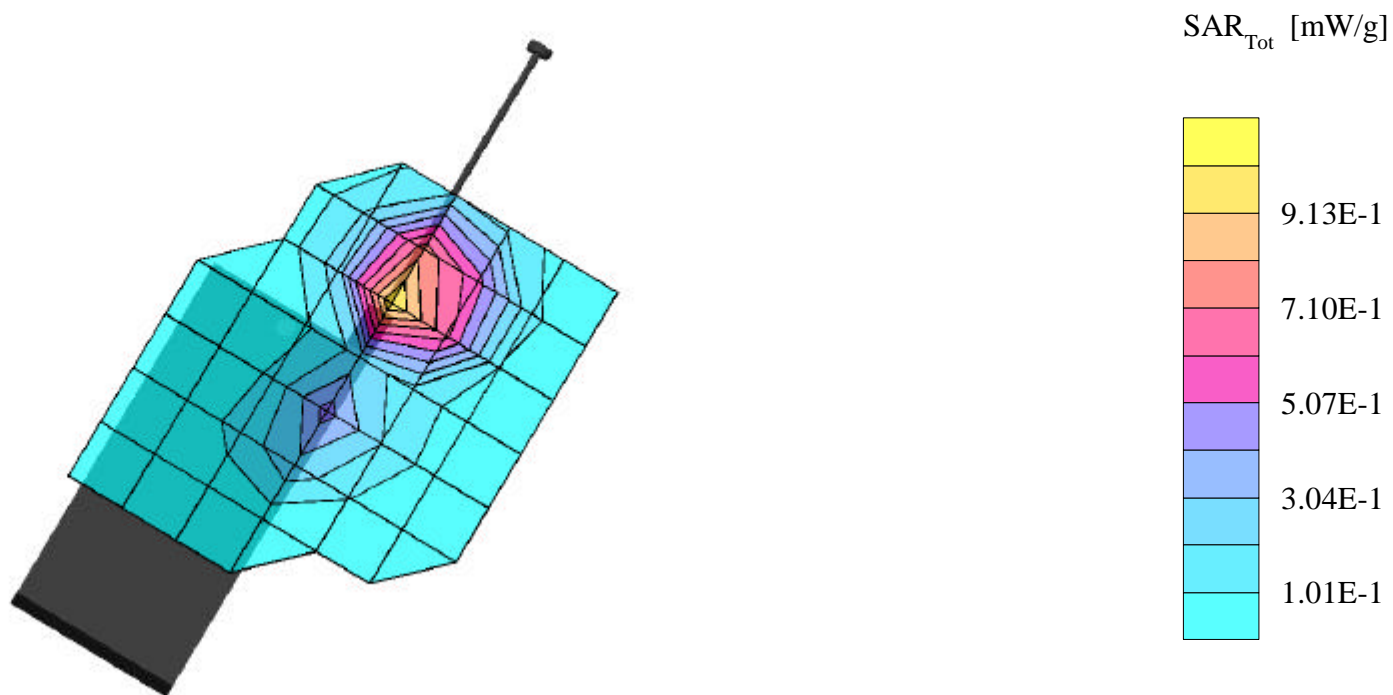
**SAR (1g): 1.16 mW/g, SAR (10g): 0.680 mW/g**

SANYO Dual Mode: SCP-4900 [S/N: F7040ECE]

PCS CDMA Mode, Ch.0600 [1880.00MHz]; Extended Battery; Measured tissue temp. = 21.2°

Conducted Power = 23.5dBm; Left Head SAR, Ear/15degree Tilt position

Test Date -- 03/23/2002 [FCC/OET Bulletin 65 - Supplement C, July 2001]



# SANYO FCC ID: AEZSCP-49H -- PCS CDMA Head SAR

SAM Phantom; Left Hand Section; Probe:ET3DV6 - SN1560 -- Probe Cal Date 20/02/02; ConvF(5.16,5.16,5.16)  
Med. Parameters 1900 MHz Brain:  $\sigma = 1.44$  mho/m  $\epsilon_r = 40.3$   $\rho = 1.00$  g/cm<sup>3</sup>; Antenna Position -- In; Crest Factor 1.0

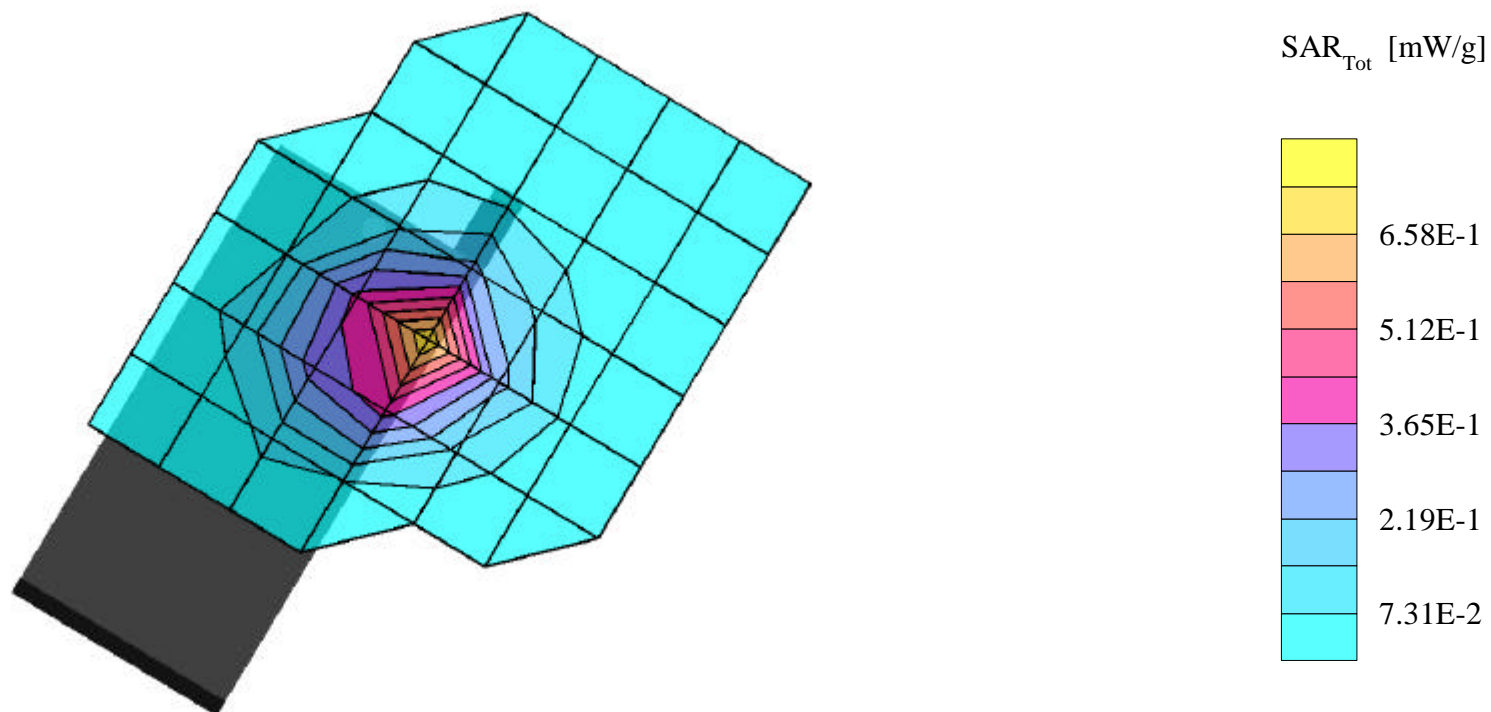
**SAR (1g): 0.749 mW/g, SAR (10g): 0.417 mW/g**

SANYO Dual Mode: SCP-4900 [S/N: F7040ECE]

PCS CDMA Mode, Ch.1175 [1908.75MHz]; Extended Battery; Measured tissue temp. = 21.2°

Conducted Power = 23.5dBm; Left Head SAR, Ear/15degree Tilt position

Test Date -- 03/23/2002 [FCC/OET Bulletin 65 - Supplement C, July 2001]



# SANYO FCC ID: AEZSCP-49H -- PCS CDMA Head SAR

SAM Phantom; Left Hand Section; Probe:ET3DV6 - SN1560 -- Probe Cal Date 20/02/02; ConvF(5.16,5.16,5.16)  
Med. Parameters 1900 MHz Brain:  $\sigma = 1.44$  mho/m  $\epsilon_r = 40.3$   $\rho = 1.00$  g/cm<sup>3</sup>; Antenna Position -- Out; Crest Factor 1.0

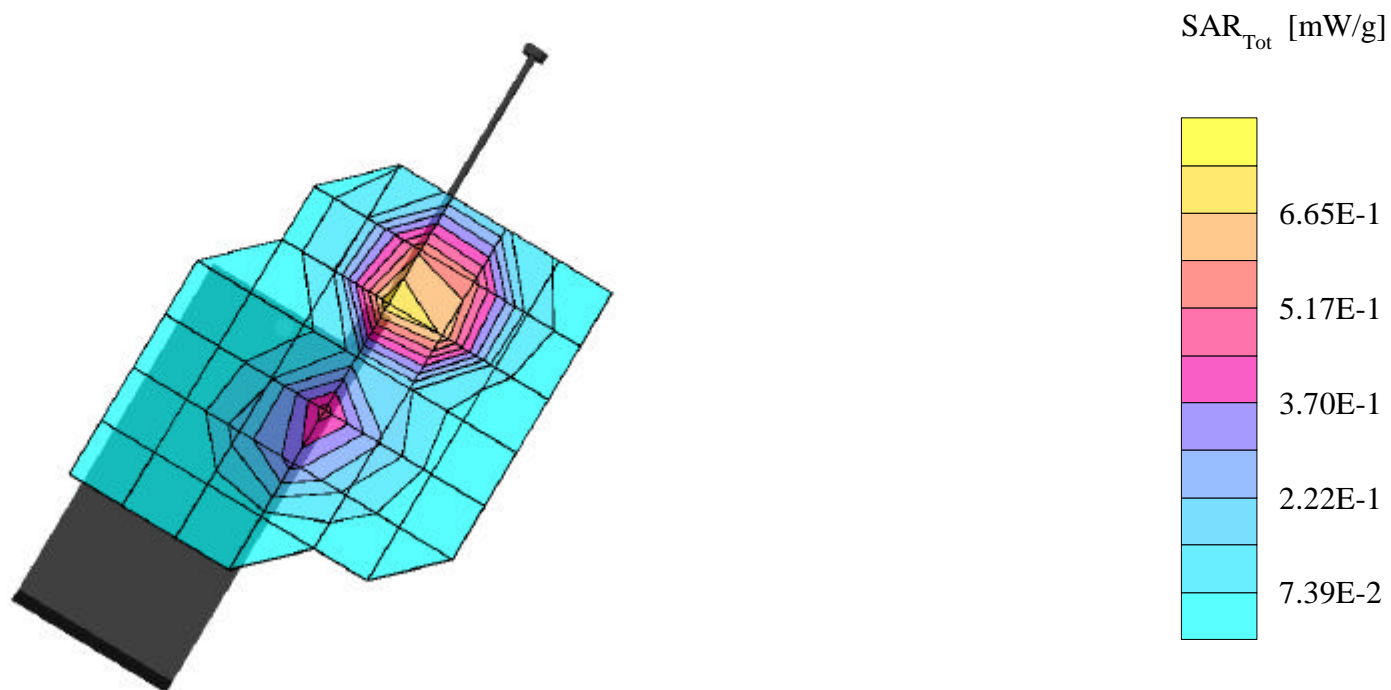
**SAR (1g): 0.974 mW/g, SAR (10g): 0.561 mW/g**

SANYO Dual Mode: SCP-4900 [S/N: F7040ECE]

PCS CDMA Mode, Ch.1175 [1908.75MHz]; Extended Battery; Measured tissue temp. = 21.2°

Conducted Power = 23.5dBm; Left Head SAR, Ear/15degree Tilt position

Test Date -- 03/23/2002 [FCC/OET Bulletin 65 - Supplement C, July 2001]



# SANYO FCC ID: AEZSCP-49H -- PCS CDMA Head SAR

SAM Phantom; Left Hand Section; Probe:ET3DV6 - SN1560 -- Probe Cal Date 20/02/02; ConvF(5.16,5.16,5.16)  
Med. Parameters 1900 MHz Brain:  $\sigma = 1.44$  mho/m  $\epsilon_r = 40.3$   $\rho = 1.00$  g/cm<sup>3</sup>; Antenna Position -- In; Crest Factor 1.0

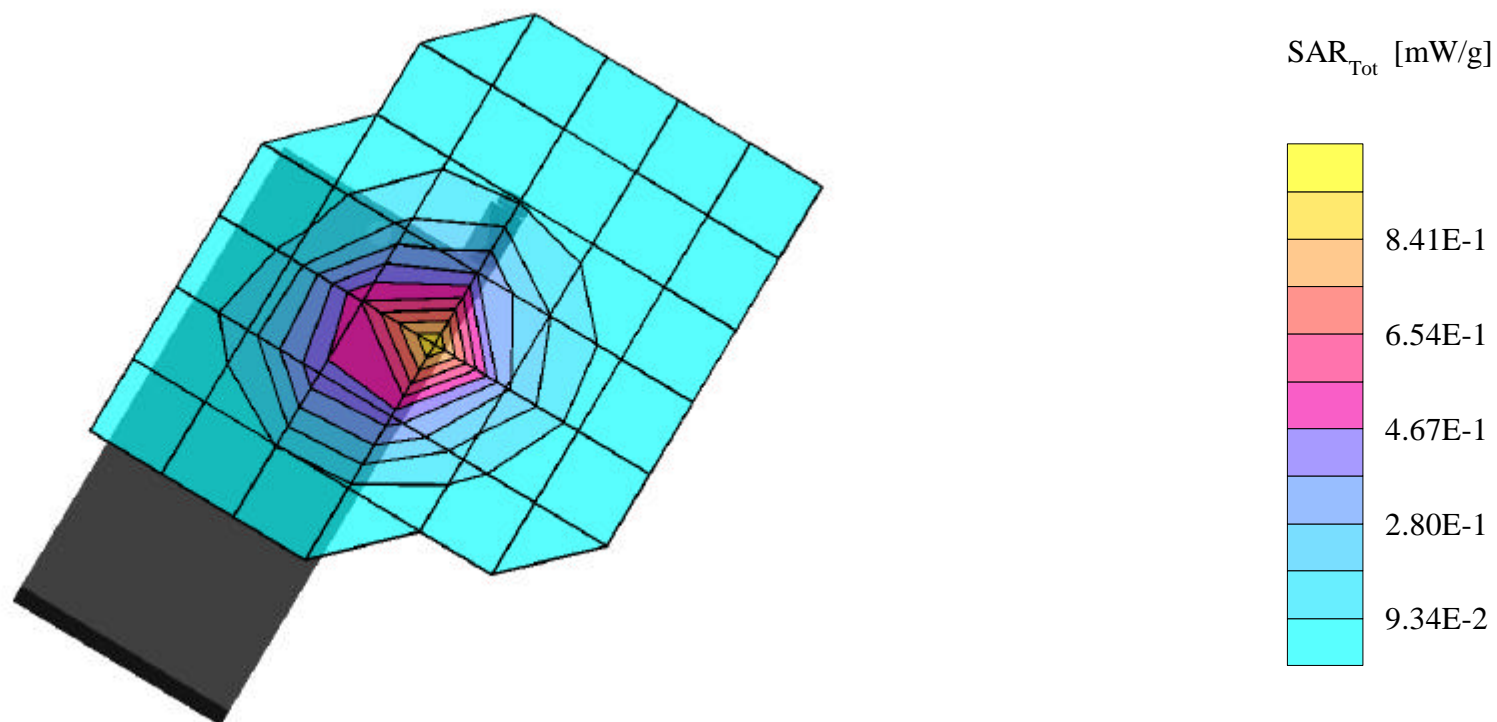
**SAR (1g): 0.953 mW/g, SAR (10g): 0.544 mW/g**

SANYO Dual Mode: SCP-4900 [S/N: F7040ECE]

PCS CDMA Mode, Ch.0025 [1851.25MHz]; Standard Battery; Measured tissue temp. = 21.2°

Conducted Power = 23.5dBm; Left Head SAR, Ear/15degree Tilt position

Test Date -- 03/23/2002 [FCC/OET Bulletin 65 - Supplement C, July 2001]





# SANYO FCC ID: AEZSCP-49H -- PCS CDMA Head SAR

SAM Phantom; Left Hand Section; Probe:ET3DV6 - SN1560 -- Probe Cal Date 20/02/02; ConvF(5.16,5.16,5.16)  
Med. Parameters 1900 MHz Brain:  $\sigma = 1.44$  mho/m  $\epsilon_r = 40.3$   $\rho = 1.00$  g/cm<sup>3</sup>; Antenna Position -- Out; Crest Factor 1.0

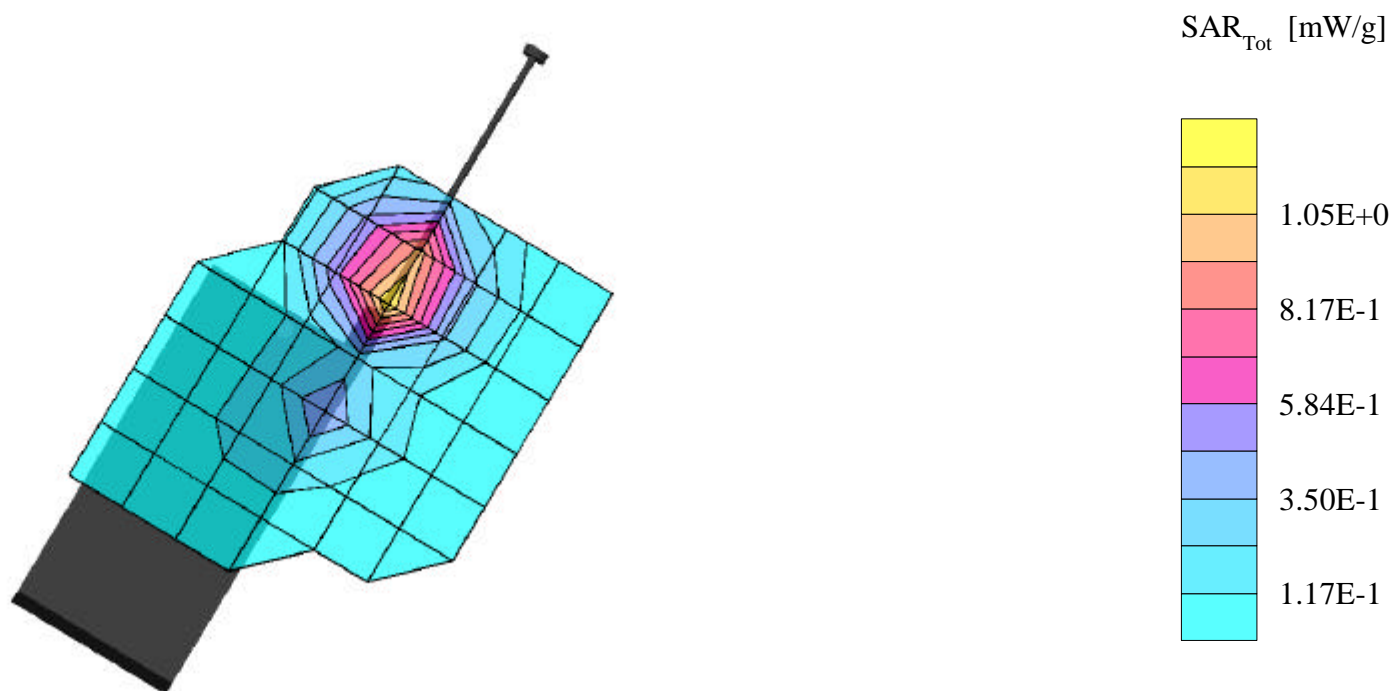
**SAR (1g): 1.28 mW/g, SAR (10g): 0.752 mW/g**

SANYO Dual Mode: SCP-4900 [S/N: F7040ECE]

PCS CDMA Mode, Ch.0025 [1851.25MHz]; Standard Battery; Measured tissue temp. = 21.2°

Conducted Power = 23.5dBm; Left Head SAR, Ear/15degree Tilt position

Test Date -- 03/23/2002 [FCC/OET Bulletin 65 - Supplement C, July 2001]





# SANYO FCC ID: AEZSCP-49H -- PCS CDMA Head SAR

SAM Phantom; Left Hand Section; Probe:ET3DV6 - SN1560 -- Probe Cal Date 20/02/02; ConvF(5.16,5.16,5.16)  
Med. Parameters 1900 MHz Brain:  $\sigma = 1.44$  mho/m  $\epsilon_r = 40.3$   $\rho = 1.00$  g/cm<sup>3</sup>; Antenna Position -- In; Crest Factor 1.0

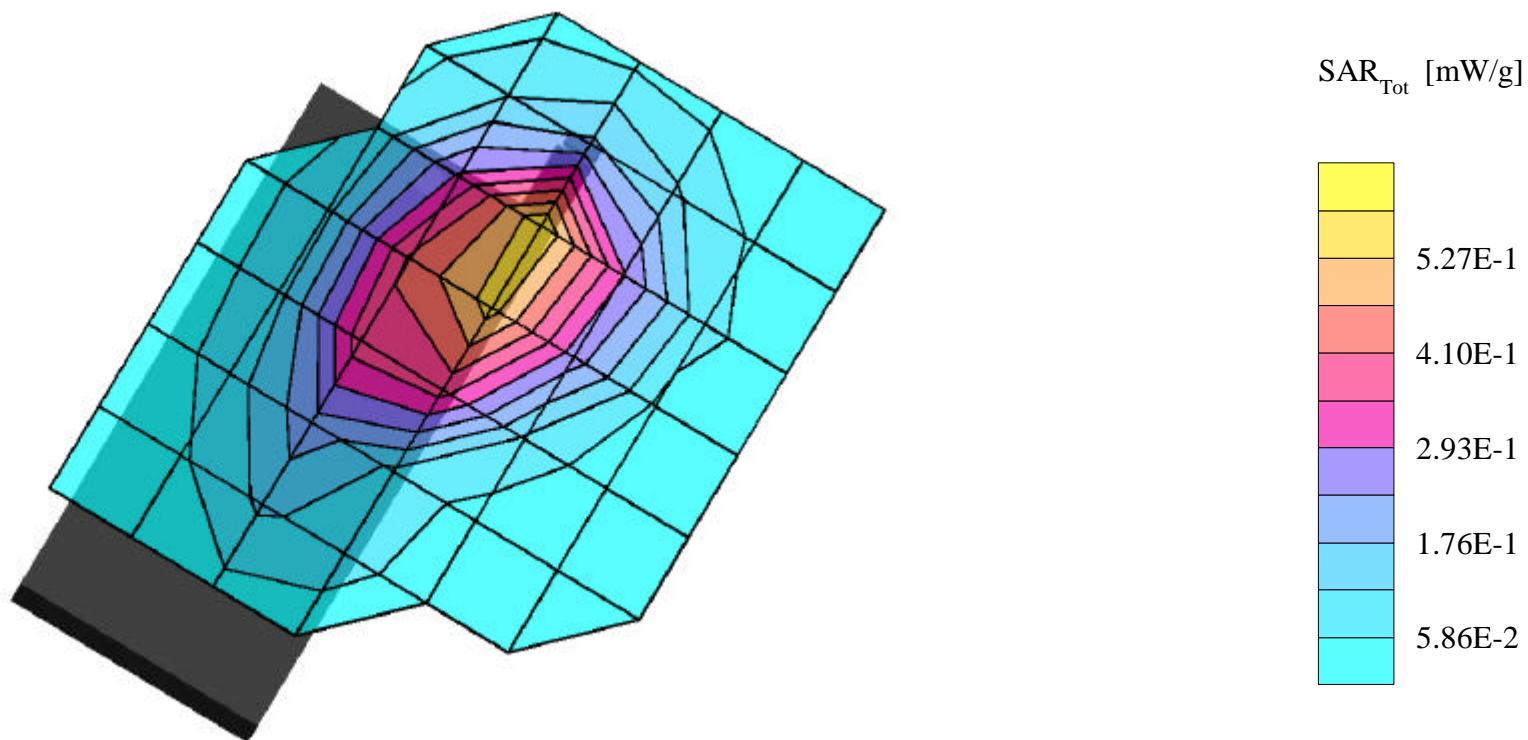
**SAR (1g): 0.613 mW/g, SAR (10g): 0.373 mW/g**

SANYO Dual Mode Model: SCP-4900

PCS CDMA Mode, Ch.0025 [1851.25MHz]; Extended Battery; Measured tissue temp. = 21.2°

Conducted Power = 23.5dBm; Left Head SAR, Cheek/Touch position

Test Date -- 03/23/2002 [FCC/OET Bulletin 65 - Supplement C, July 2001]



# SANYO FCC ID: AEZSCP-49H -- PCS CDMA Head SAR

SAM Phantom; Left Hand Section; Probe:ET3DV6 - SN1560 -- Probe Cal Date 20/02/02; ConvF(5.16,5.16,5.16)  
Med. Parameters 1900 MHz Brain:  $\sigma = 1.44$  mho/m  $\epsilon_r = 40.3$   $\rho = 1.00$  g/cm<sup>3</sup>; Antenna Position -- Out; Crest Factor 1.0

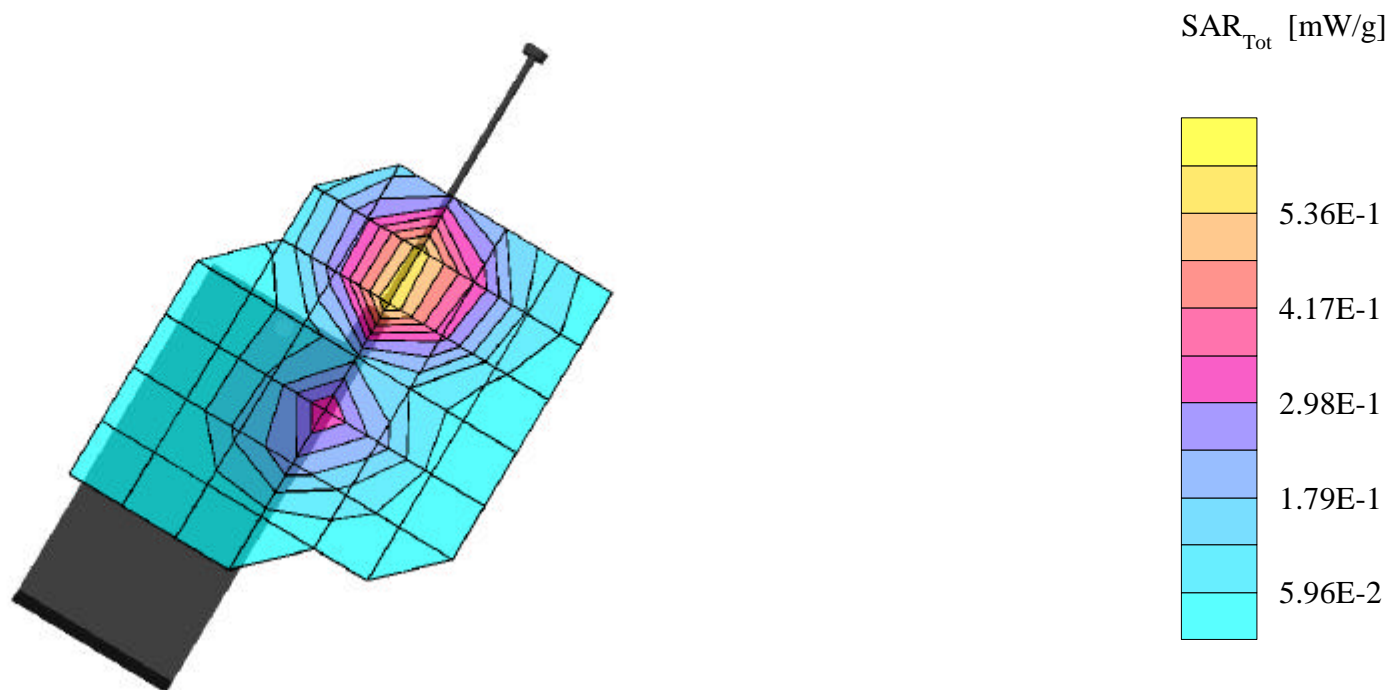
**SAR (1g): 0.666 mW/g, SAR (10g): 0.407 mW/g**

SANYO Dual Mode Model: SCP-4900

PCS CDMA Mode, Ch.0025 [1851.25MHz]; Extended Battery; Measured tissue temp. = 21.2°

Conducted Power = 23.5dBm; Left Head SAR, Cheek/Touch position

Test Date -- 03/23/2002 [FCC/OET Bulletin 65 - Supplement C, July 2001]



# SANYO FCC ID: AEZSCP-49H -- PCS CDMA Head SAR

SAM Phantom; Left Hand Section; Probe:ET3DV6 - SN1560 -- Probe Cal Date 20/02/02; ConvF(5.16,5.16,5.16)  
Med. Parameters 1900 MHz Brain:  $\sigma = 1.44$  mho/m  $\epsilon_r = 40.3$   $\rho = 1.00$  g/cm<sup>3</sup>; Antenna Position -- In; Crest Factor 1.0

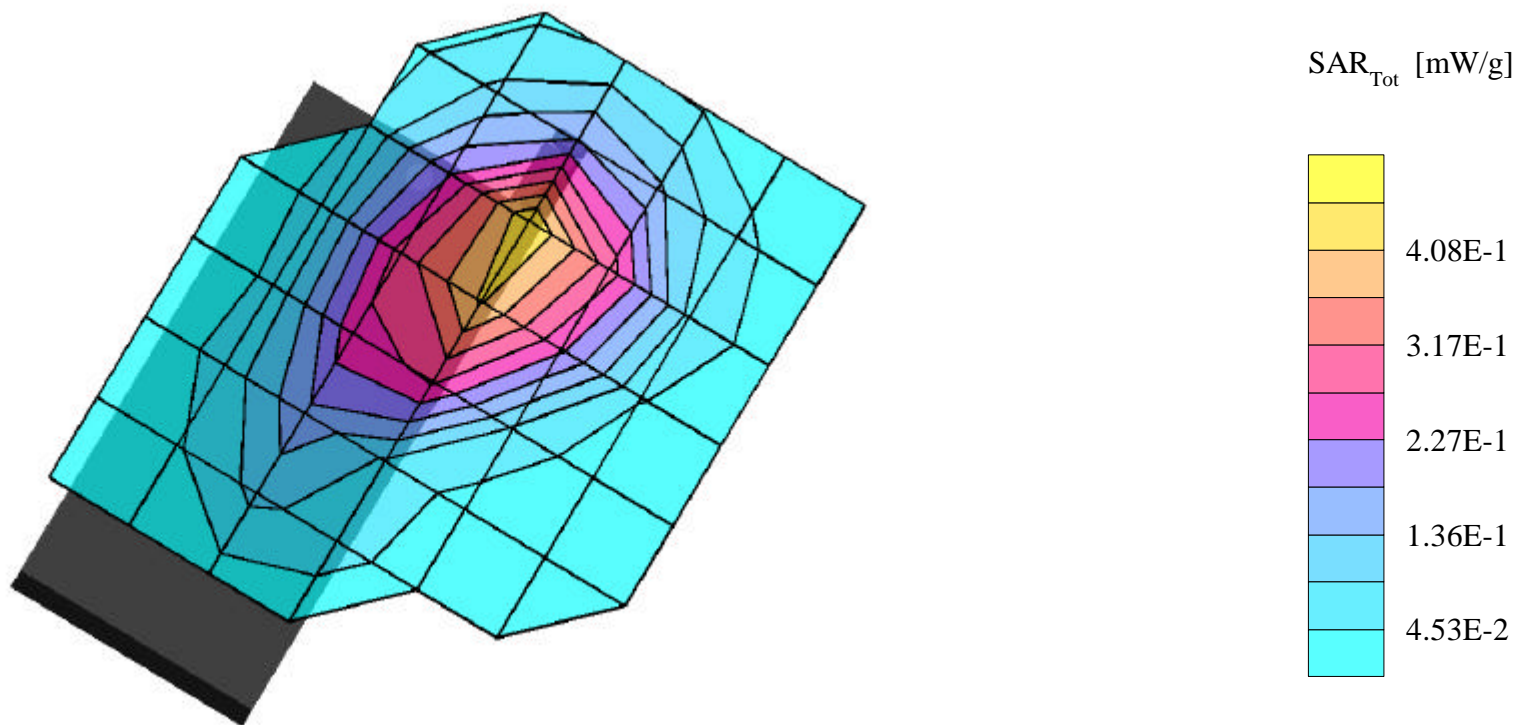
**SAR (1g): 0.461 mW/g, SAR (10g): 0.284 mW/g**

SANYO Dual Mode Model: SCP-4900

PCS CDMA Mode, Ch.0600 [1880.00MHz]; Extended Battery; Measured tissue temp. = 21.2°

Conducted Power = 23.5dBm; Left Head SAR, Cheek/Touch position

Test Date -- 03/23/2002 [FCC/OET Bulletin 65 - Supplement C, July 2001]



# SANYO FCC ID: AEZSCP-49H -- PCS CDMA Head SAR

SAM Phantom; Left Hand Section; Probe:ET3DV6 - SN1560 -- Probe Cal Date 20/02/02; ConvF(5.16,5.16,5.16)  
Med. Parameters 1900 MHz Brain:  $\sigma = 1.44$  mho/m  $\epsilon_r = 40.3$   $\rho = 1.00$  g/cm<sup>3</sup>; Antenna Position -- Out; Crest Factor 1.0

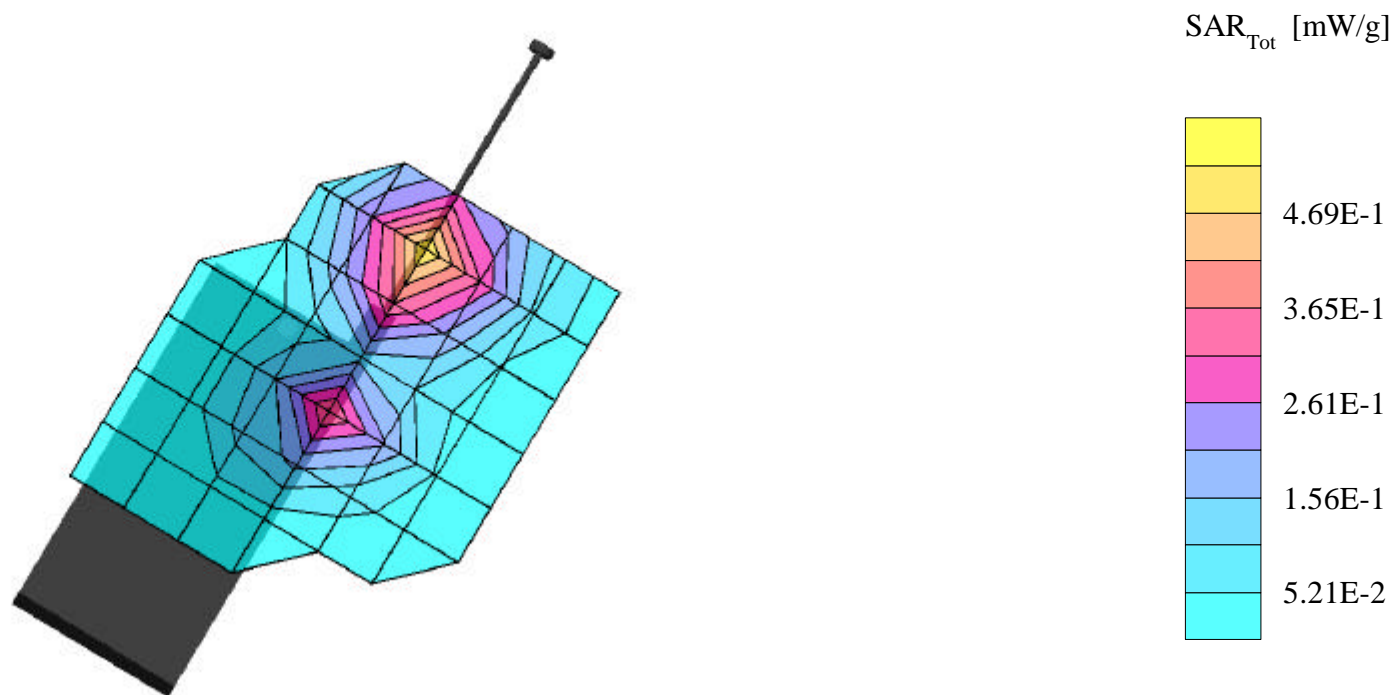
**SAR (1g): 0.536 mW/g, SAR (10g): 0.328 mW/g**

SANYO Dual Mode Model: SCP-4900

PCS CDMA Mode, Ch.0600 [1880.00MHz]; Extended Battery; Measured tissue temp. = 21.2°

Conducted Power = 23.5dBm; Left Head SAR, Cheek/Touch position

Test Date -- 03/23/2002 [FCC/OET Bulletin 65 - Supplement C, July 2001]



# SANYO FCC ID: AEZSCP-49H -- PCS CDMA Head SAR

SAM Phantom; Left Hand Section; Probe:ET3DV6 - SN1560 -- Probe Cal Date 20/02/02; ConvF(5.16,5.16,5.16)  
Med. Parameters 1900 MHz Brain:  $\sigma = 1.44$  mho/m  $\epsilon_r = 40.3$   $\rho = 1.00$  g/cm<sup>3</sup>; Antenna Position -- In; Crest Factor 1.0

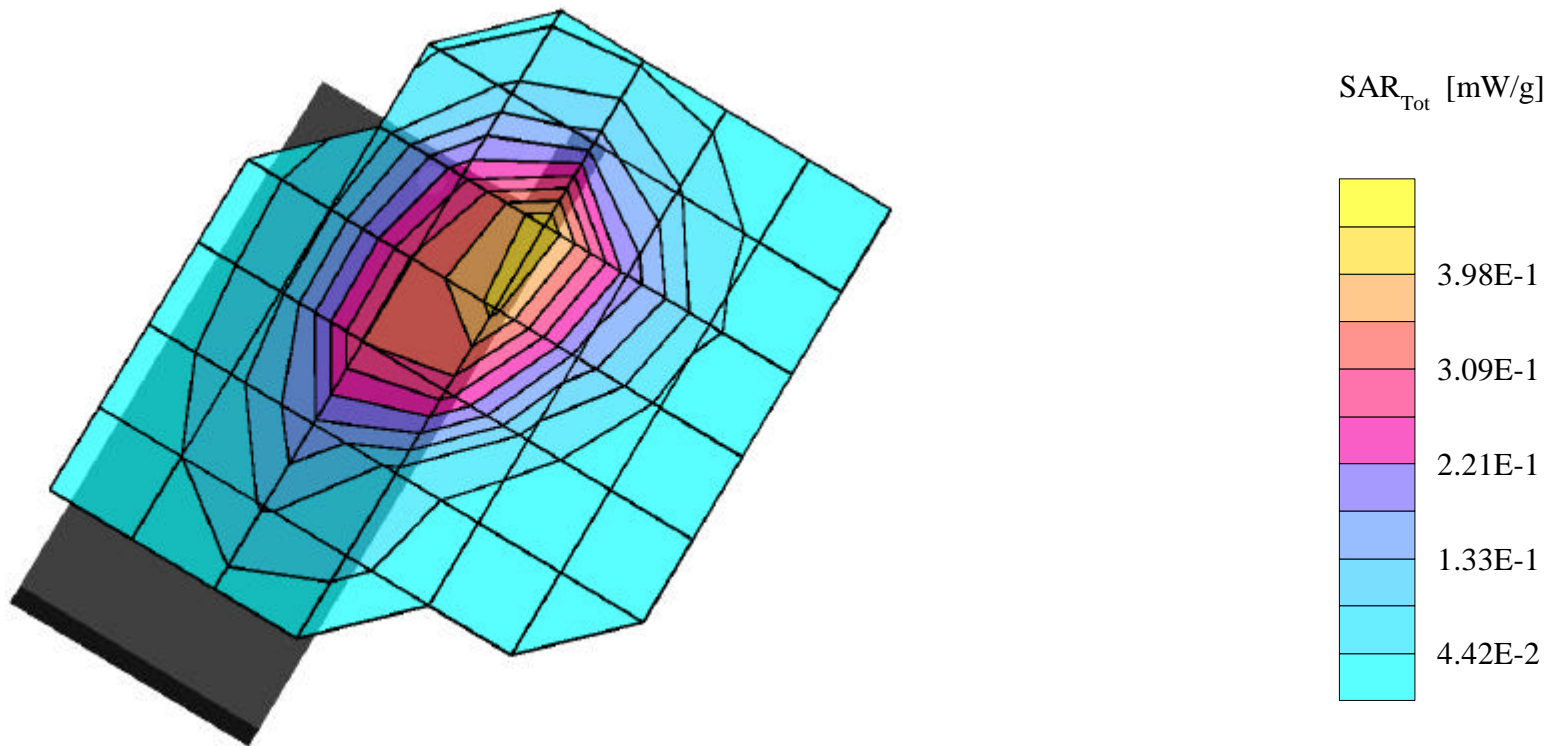
**SAR (1g): 0.453 mW/g, SAR (10g): 0.273 mW/g**

SANYO Dual Mode Model: SCP-4900

PCS CDMA Mode, Ch.1175 [1908.75MHz]; Extended Battery; Measured tissue temp. = 21.2°

Conducted Power = 23.5dBm; Left Head SAR, Cheek/Touch position

Test Date -- 03/23/2002 [FCC/OET Bulletin 65 - Supplement C, July 2001]



# SANYO FCC ID: AEZSCP-49H -- PCS CDMA Head SAR

SAM Phantom; Left Hand Section; Probe:ET3DV6 - SN1560 -- Probe Cal Date 20/02/02; ConvF(5.16,5.16,5.16)  
Med. Parameters 1900 MHz Brain:  $\sigma = 1.44$  mho/m  $\epsilon_r = 40.3$   $\rho = 1.00$  g/cm<sup>3</sup>; Antenna Position -- Out; Crest Factor 1.0

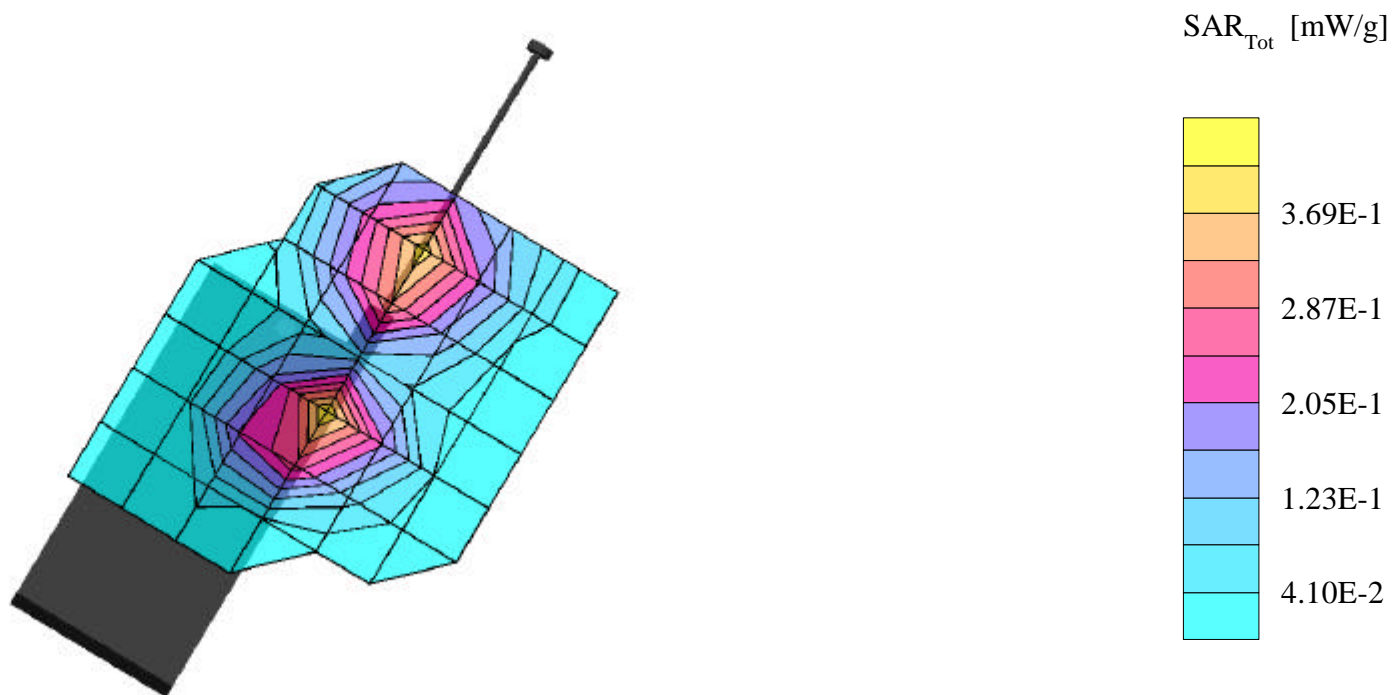
**SAR (1g): 0.425 mW/g, SAR (10g): 0.252 mW/g**

SANYO Dual Mode Model: SCP-4900

PCS CDMA Mode, Ch.1175 [1908.75MHz]; Extended Battery; Measured tissue temp. = 21.2°

Conducted Power = 23.5dBm; Left Head SAR, Cheek/Touch position

Test Date -- 03/23/2002 [FCC/OET Bulletin 65 - Supplement C, July 2001]





# SANYO FCC ID: AEZSCP-49H -- PCS CDMA Head SAR

SAM Phantom; Right Hand Section; Probe:ET3DV6 - SN1560 -- Probe Cal Date 20/02/02; ConvF(5.16,5.16,5.16)  
Med. Parameters 1900 MHz Brain:  $\sigma = 1.44$  mho/m  $\epsilon_r = 40.3$   $\rho = 1.00$  g/cm<sup>3</sup>; Antenna Position -- In; Crest Factor 1.0

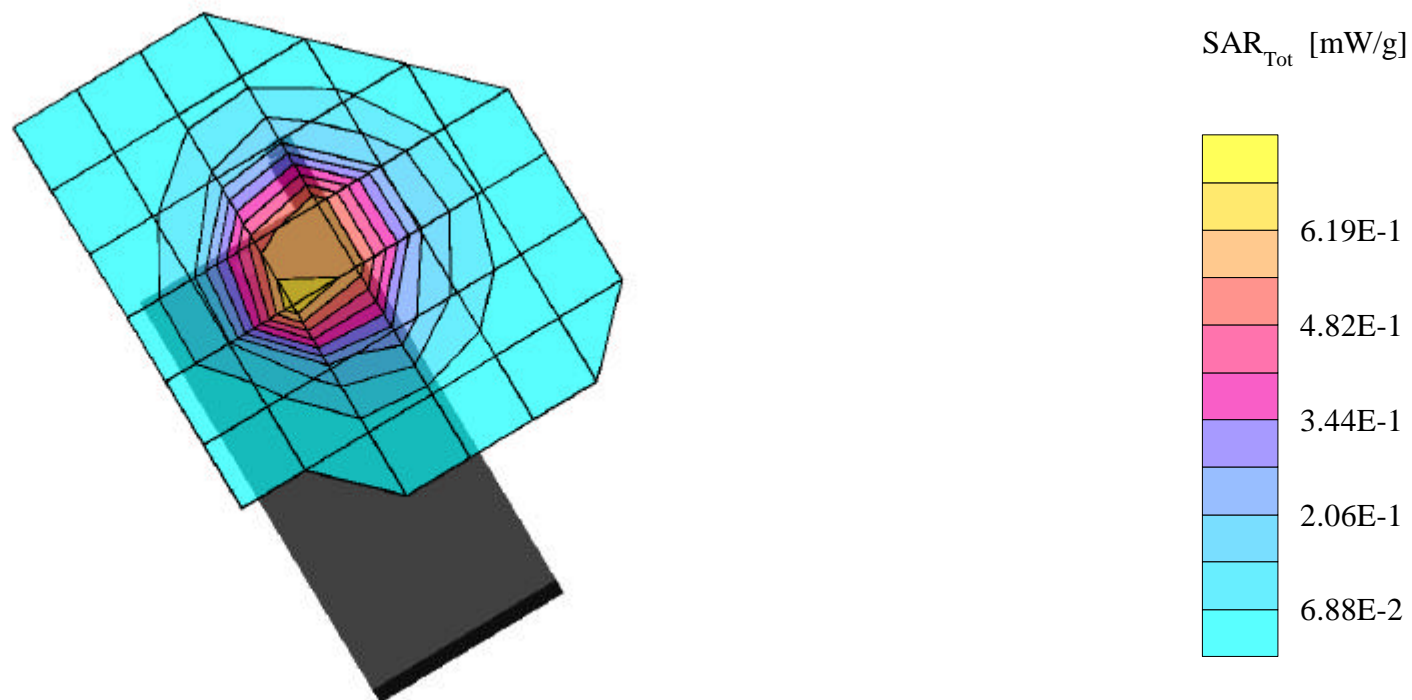
**SAR (1g): 0.857 mW/g, SAR (10g): 0.498 mW/g**

SANYO Dual Mode Model: SCP-4900

PCS CDMA Mode, Ch.0025 [1851.25MHz]; Extended Battery; Measured tissue temp. = 21.2°

Conducted Power = 23.5dBm; Right Head SAR, Ear/15degree Tilt position

Test Date -- 03/23/2002 [FCC/OET Bulletin 65 - Supplement C, July 2001]





# SANYO FCC ID: AEZSCP-49H -- PCS CDMA Head SAR

SAM Phantom; Right Hand Section; Probe:ET3DV6 - SN1560 -- Probe Cal Date 20/02/02; ConvF(5.16,5.16,5.16)  
Med. Parameters 1900 MHz Brain:  $\sigma = 1.44$  mho/m  $\epsilon_r = 40.3$   $\rho = 1.00$  g/cm<sup>3</sup>; Antenna Position -- Out; Crest Factor 1.0

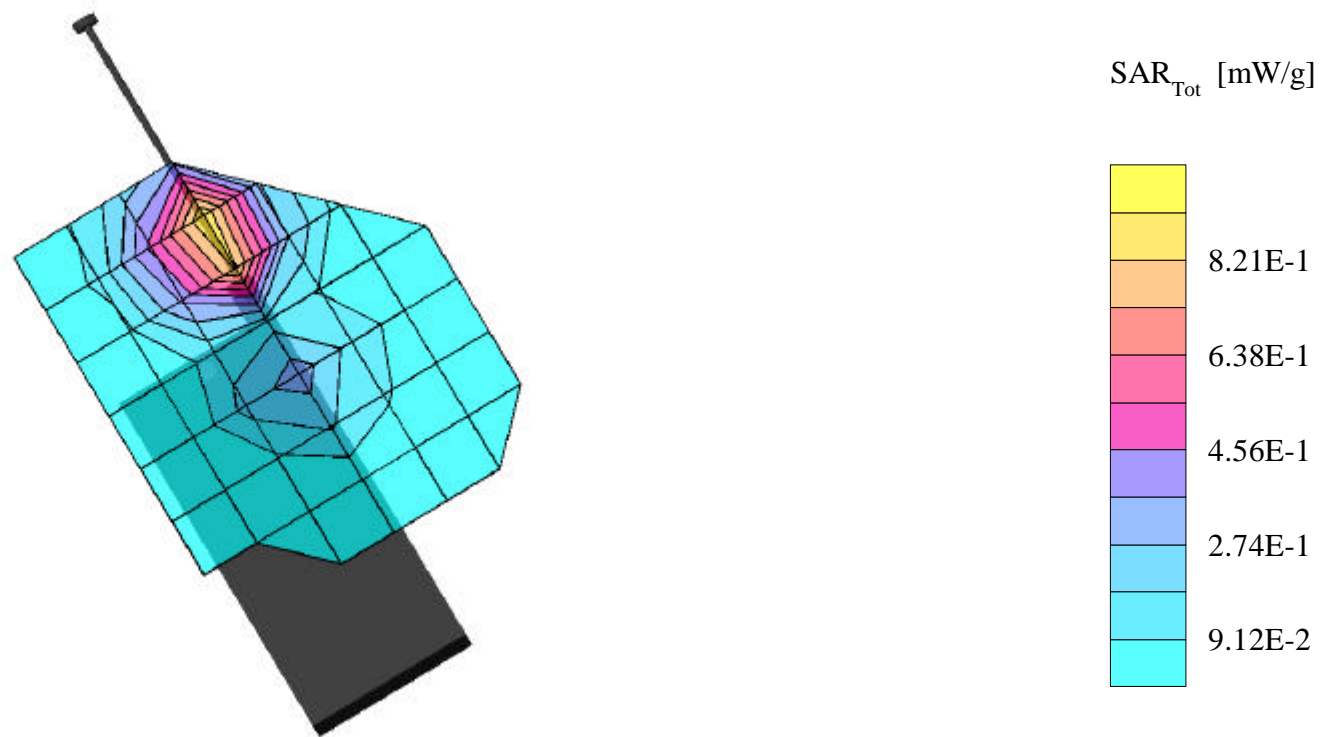
**SAR (1g): 1.04 mW/g**, SAR (10g): 0.620 mW/g

SANYO Dual Mode Model: SCP-4900

PCS CDMA Mode, Ch.0025 [1851.25MHz]; Extended Battery; Measured tissue temp. = 21.2°

Conducted Power = 23.5dBm; Right Head SAR, Ear/15degree Tilt position

Test Date -- 03/23/2002 [FCC/OET Bulletin 65 - Supplement C, July 2001]



# SANYO FCC ID: AEZSCP-49H -- PCS CDMA Head SAR

SAM Phantom; Right Hand Section; Probe:ET3DV6 - SN1560 -- Probe Cal Date 20/02/02; ConvF(5.16,5.16,5.16)  
Med. Parameters 1900 MHz Brain:  $\sigma = 1.44$  mho/m  $\epsilon_r = 40.3$   $\rho = 1.00$  g/cm<sup>3</sup>; Antenna Position -- In; Crest Factor 1.0

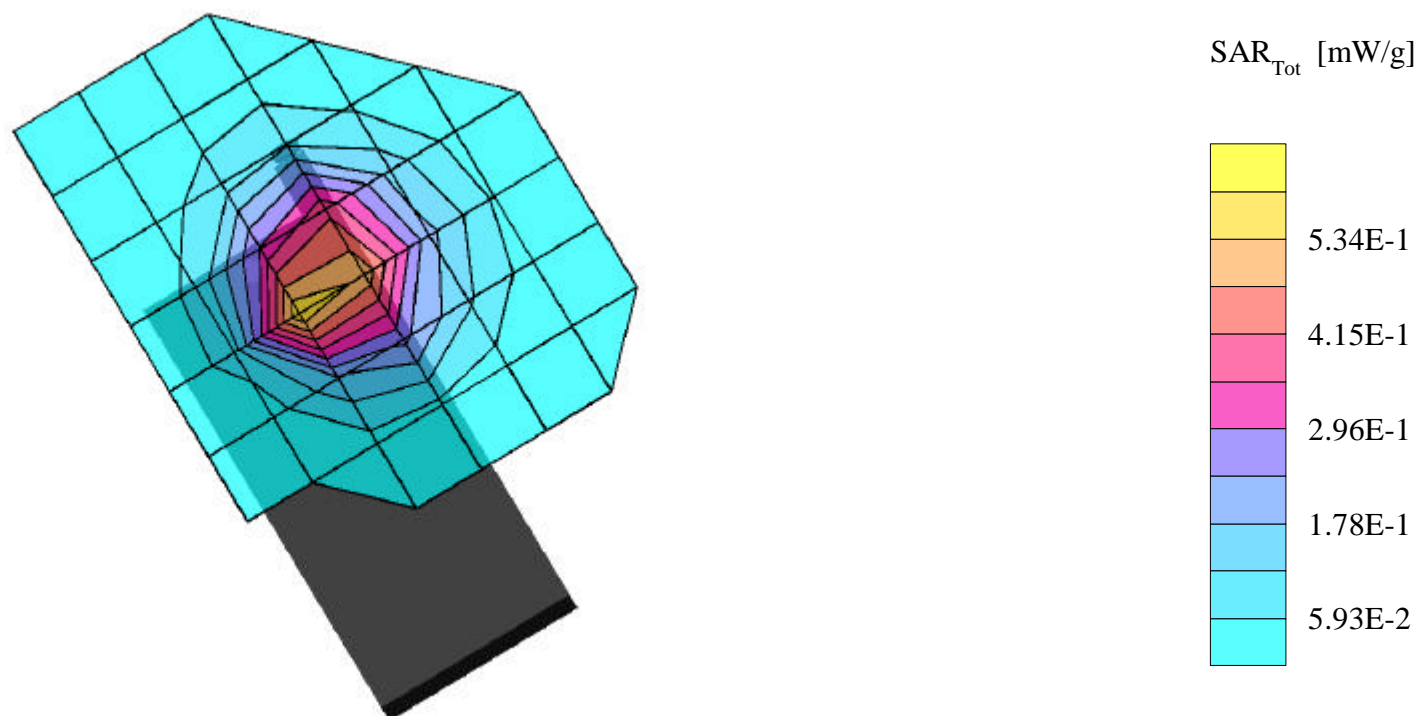
**SAR (1g): 0.655 mW/g, SAR (10g): 0.377 mW/g**

SANYO Dual Mode Model: SCP-4900

PCS CDMA Mode, Ch.0600 [1880.00MHz]; Extended Battery; Measured tissue temp. = 21.2°

Conducted Power = 23.5dBm; Right Head SAR, Ear/15degree Tilt position

Test Date -- 03/23/2002 [FCC/OET Bulletin 65 - Supplement C, July 2001]



# SANYO FCC ID: AEZSCP-49H -- PCS CDMA Head SAR

SAM Phantom; Right Hand Section; Probe:ET3DV6 - SN1560 -- Probe Cal Date 20/02/02; ConvF(5.16,5.16,5.16)  
Med. Parameters 1900 MHz Brain:  $\sigma = 1.44$  mho/m  $\epsilon_r = 40.3$   $\rho = 1.00$  g/cm<sup>3</sup>; Antenna Position -- Out; Crest Factor 1.0

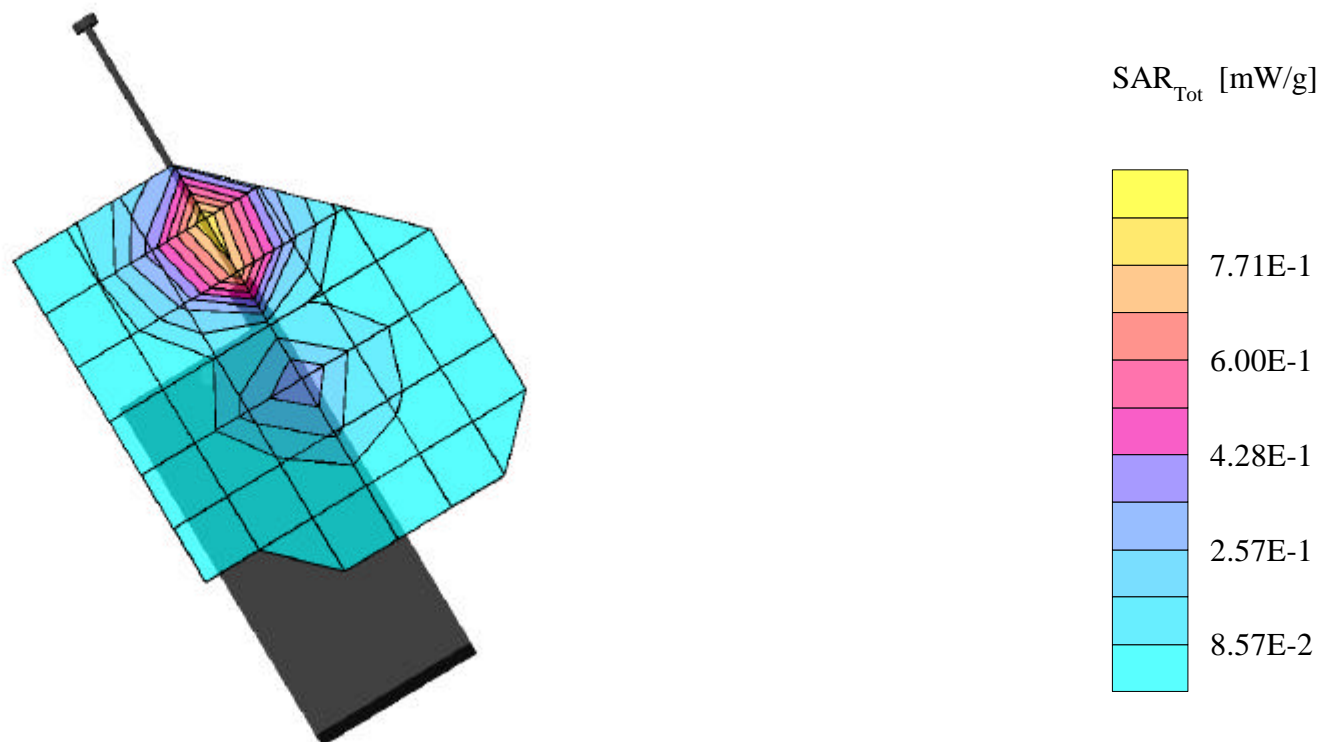
**SAR (1g): 0.954 mW/g, SAR (10g): 0.561 mW/g**

SANYO Dual Mode Model: SCP-4900

PCS CDMA Mode, Ch.0600 [1880.00MHz]; Extended Battery; Measured tissue temp. = 21.2°

Conducted Power = 23.5dBm; Right Head SAR, Ear/15degree Tilt position

Test Date -- 03/23/2002 [FCC/OET Bulletin 65 - Supplement C, July 2001]



# SANYO FCC ID: AEZSCP-49H -- PCS CDMA Head SAR

SAM Phantom; Right Hand Section; Probe:ET3DV6 - SN1560 -- Probe Cal Date 20/02/02; ConvF(5.16,5.16,5.16)  
Med. Parameters 1900 MHz Brain:  $\sigma = 1.44$  mho/m  $\epsilon_r = 40.3$   $\rho = 1.00$  g/cm<sup>3</sup>; Antenna Position -- In; Crest Factor 1.0

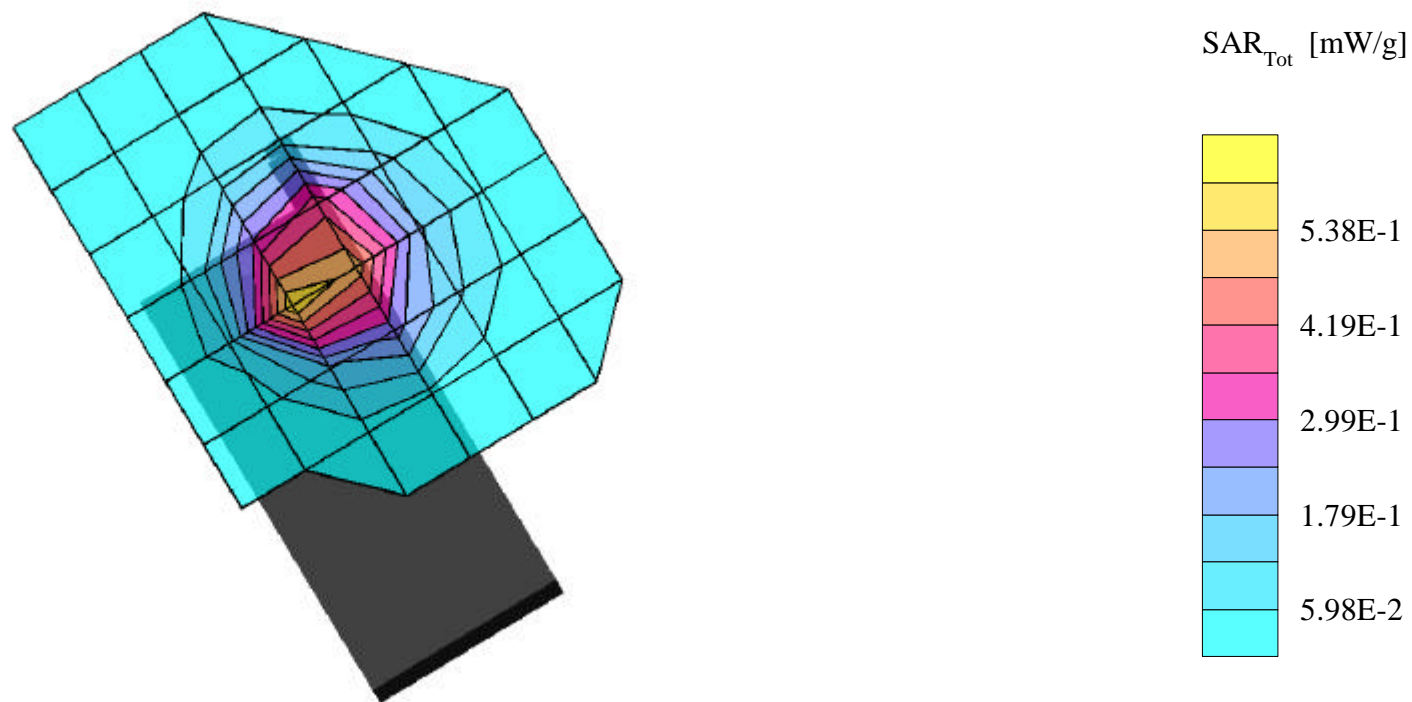
**SAR (1g): 0.677 mW/g, SAR (10g): 0.384 mW/g**

SANYO Dual Mode Model: SCP-4900

PCS CDMA Mode, Ch.1175 [1908.75MHz]; Extended Battery; Measured tissue temp. = 21.2°

Conducted Power = 23.5dBm; Right Head SAR, Ear/15degree Tilt position

Test Date -- 03/23/2002 [FCC/OET Bulletin 65 - Supplement C, July 2001]

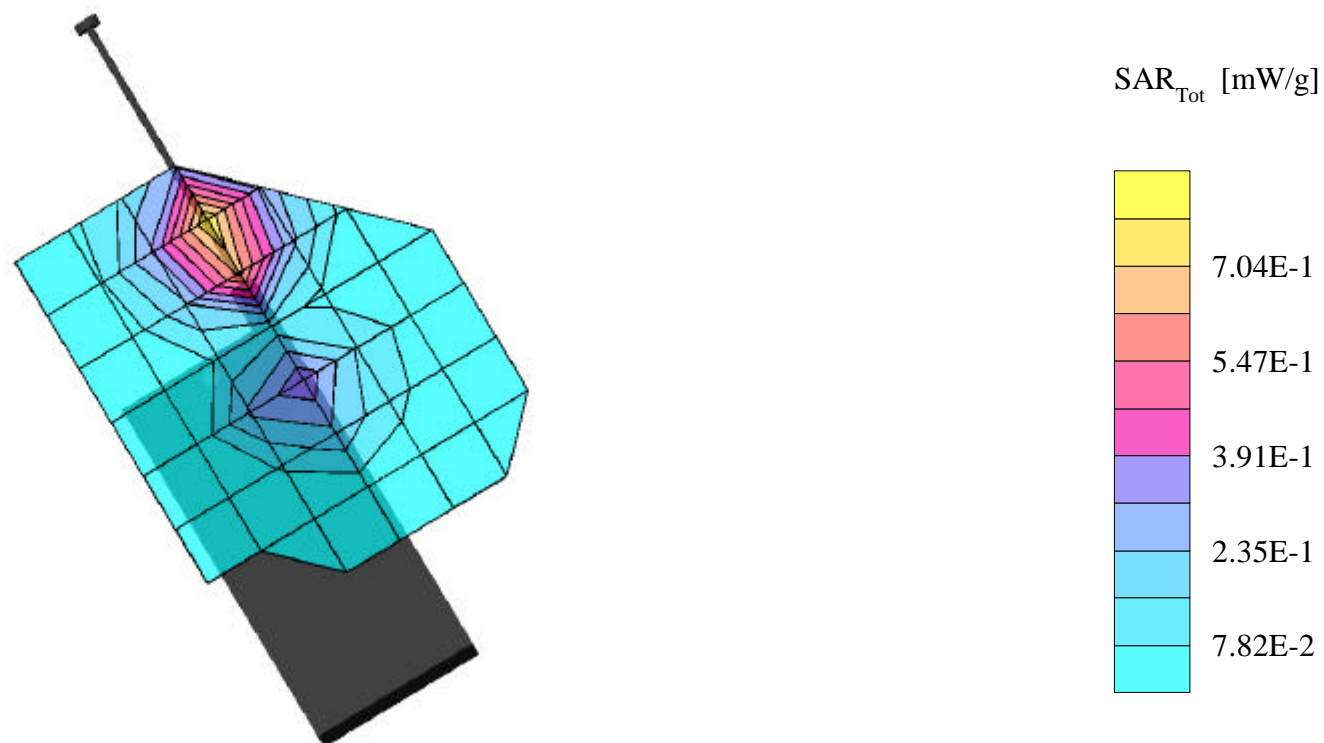


# SANYO FCC ID: AEZSCP-49H -- PCS CDMA Head SAR

SAM Phantom; Right Hand Section; Probe:ET3DV6 - SN1560 -- Probe Cal Date 20/02/02; ConvF(5.16,5.16,5.16)  
Med. Parameters 1900 MHz Brain:  $\sigma = 1.44$  mho/m  $\epsilon_r = 40.3$   $\rho = 1.00$  g/cm<sup>3</sup>; Antenna Position -- Out; Crest Factor 1.0  
**SAR (1g): 0.862 mW/g, SAR (10g): 0.502 mW/g**

SANYO Dual Mode Model: SCP-4900

PCS CDMA Mode, Ch.1175 [1908.75MHz]; Extended Battery; Measured tissue temp. = 21.2°  
Conducted Power = 23.5dBm; Right Head SAR, Ear/15degree Tilt position  
Test Date -- 03/23/2002 [FCC/OET Bulletin 65 - Supplement C, July 2001]



# SANYO FCC ID: AEZSCP-49H -- PCS CDMA Head SAR

SAM Phantom; Right Hand Section; Probe:ET3DV6 - SN1560 -- Probe Cal Date 20/02/02; ConvF(5.16,5.16,5.16)  
Med. Parameters 1900 MHz Brain:  $\sigma = 1.44$  mho/m  $\epsilon_r = 40.3$   $\rho = 1.00$  g/cm<sup>3</sup>; Antenna Position -- In; Crest Factor 1.0

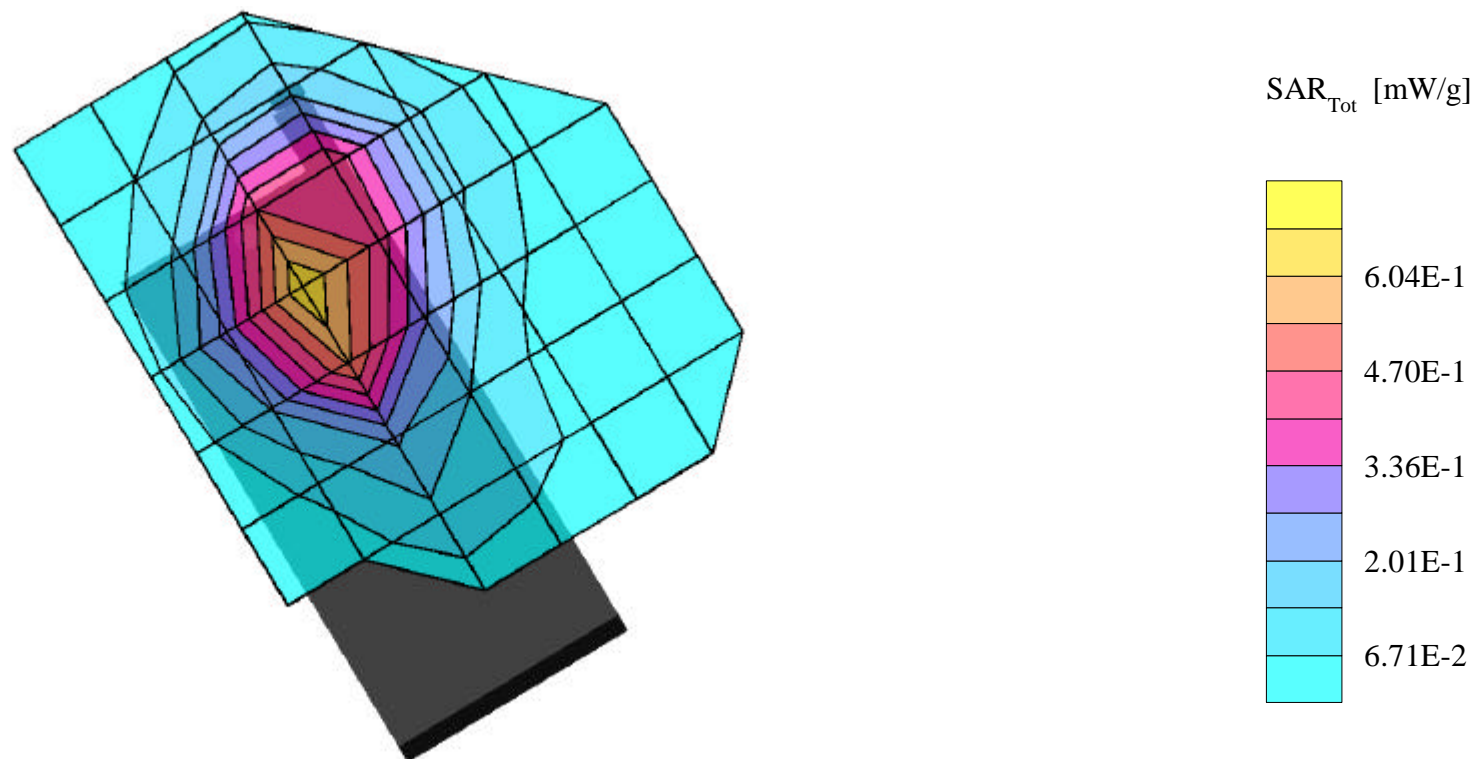
**SAR (1g): 0.681 mW/g, SAR (10g): 0.443 mW/g**

SANYO Dual Mode Model: SCP-4900

PCS CDMA Mode, Ch.0025 [1851.25MHz]; Extended Battery; Measured tissue temp. = 21.2°

Conducted Power = 23.5dBm; Right Head SAR, Cheek/Touch position

Test Date -- 03/23/2002 [FCC/OET Bulletin 65 - Supplement C, July 2001]



# SANYO FCC ID: AEZSCP-49H -- PCS CDMA Head SAR

SAM Phantom; Right Hand Section; Probe:ET3DV6 - SN1560 -- Probe Cal Date 20/02/02; ConvF(5.16,5.16,5.16)  
Med. Parameters 1900 MHz Brain:  $\sigma = 1.44$  mho/m  $\epsilon_r = 40.3$   $\rho = 1.00$  g/cm<sup>3</sup>; Antenna Position -- Out; Crest Factor 1.0

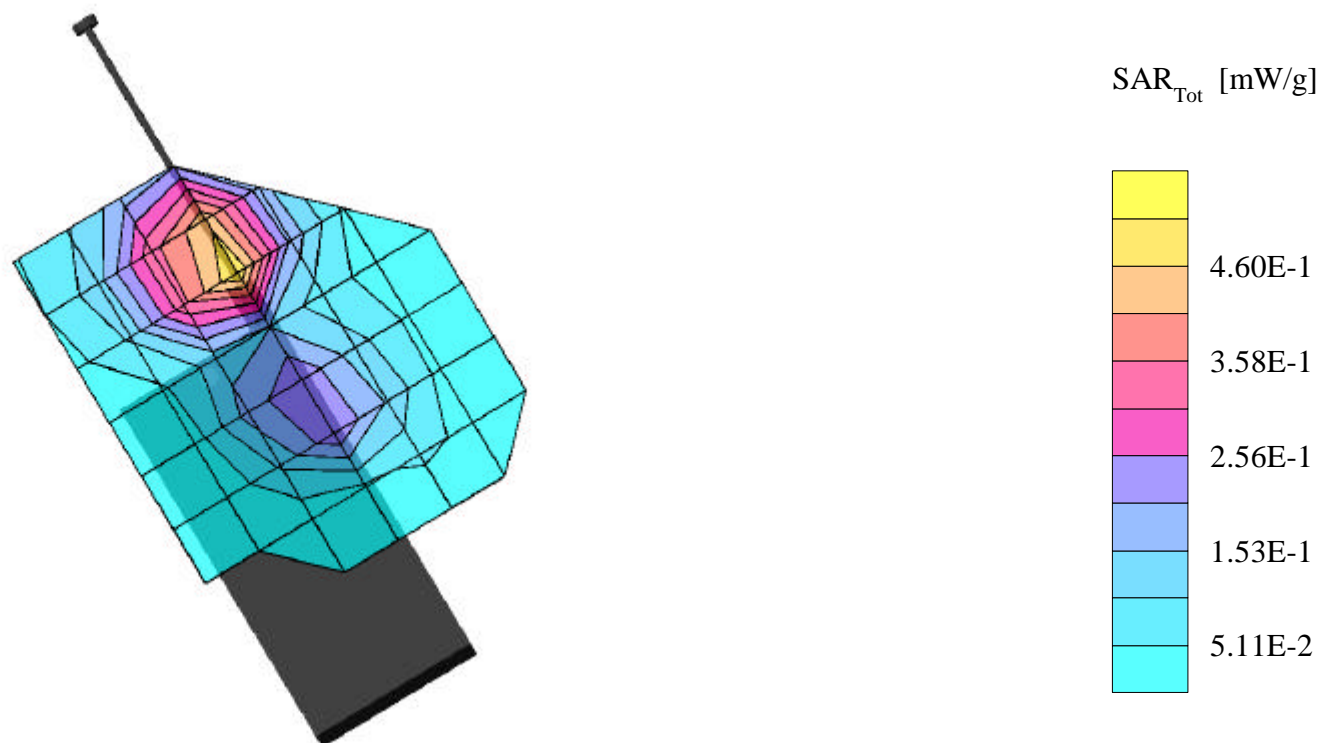
**SAR (1g): 0.568 mW/g**, SAR (10g): 0.349 mW/g

SANYO Dual Mode Model: SCP-4900

PCS CDMA Mode, Ch.0025 [1851.25MHz]; Extended Battery; Measured tissue temp. = 21.2°

Conducted Power = 23.5dBm; Right Head SAR, Cheek/Touch position

Test Date -- 03/23/2002 [FCC/OET Bulletin 65 - Supplement C, July 2001]





# SANYO FCC ID: AEZSCP-49H -- PCS CDMA Head SAR

SAM Phantom; Right Hand Section; Probe:ET3DV6 - SN1560 -- Probe Cal Date 20/02/02; ConvF(5.16,5.16,5.16)  
Med. Parameters 1900 MHz Brain:  $\sigma = 1.44$  mho/m  $\epsilon_r = 40.3$   $\rho = 1.00$  g/cm<sup>3</sup>; Antenna Position -- In; Crest Factor 1.0

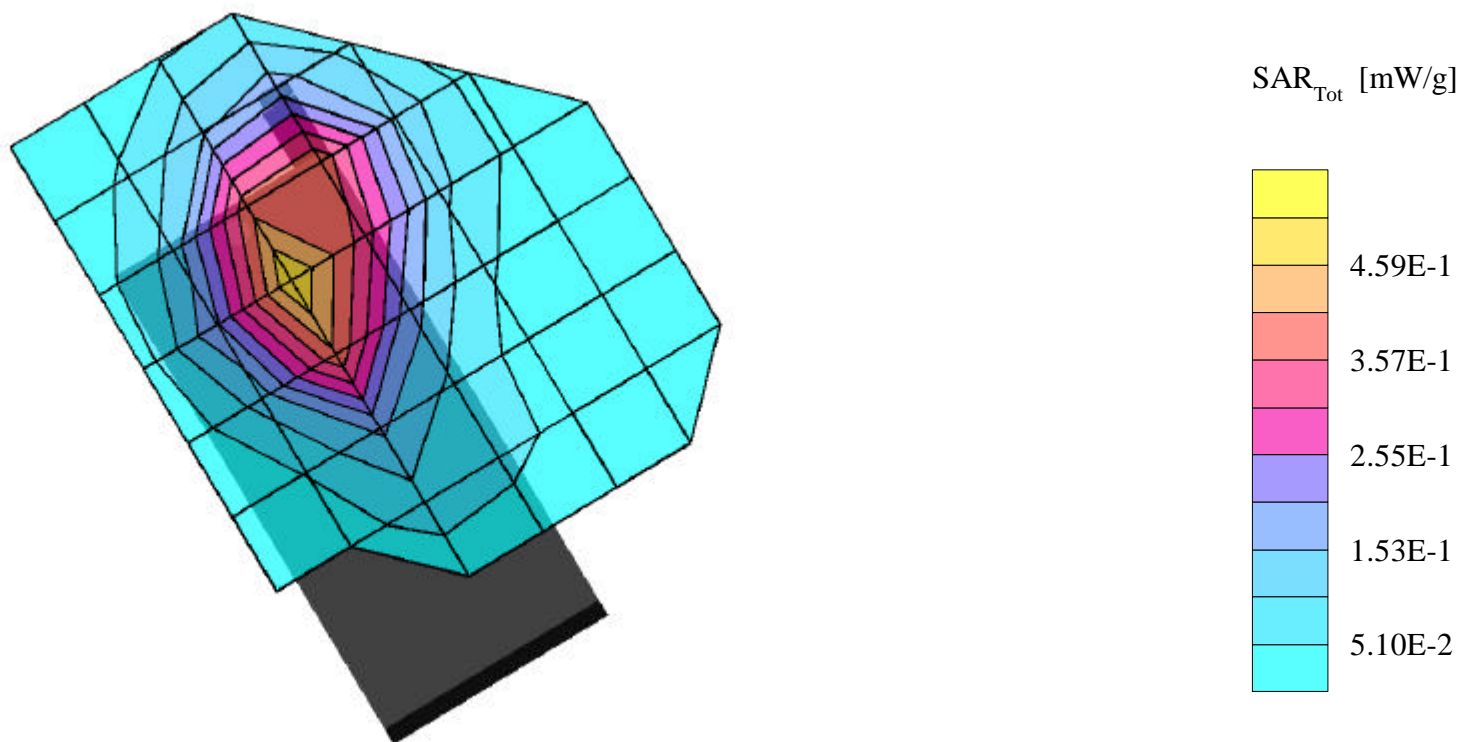
**SAR (1g): 0.502 mW/g, SAR (10g): 0.326 mW/g**

SANYO Dual Mode Model: SCP-4900

PCS CDMA Mode, Ch.0600 [1880.00MHz]; Extended Battery; Measured tissue temp. = 21.2°

Conducted Power = 23.5dBm; Right Head SAR, Cheek/Touch position

Test Date -- 03/23/2002 [FCC/OET Bulletin 65 - Supplement C, July 2001]



# SANYO FCC ID: AEZSCP-49H -- PCS CDMA Head SAR

SAM Phantom; Right Hand Section; Probe:ET3DV6 - SN1560 -- Probe Cal Date 20/02/02; ConvF(5.16,5.16,5.16)  
Med. Parameters 1900 MHz Brain:  $\sigma = 1.44$  mho/m  $\epsilon_r = 40.3$   $\rho = 1.00$  g/cm<sup>3</sup>; Antenna Position -- Out; Crest Factor 1.0

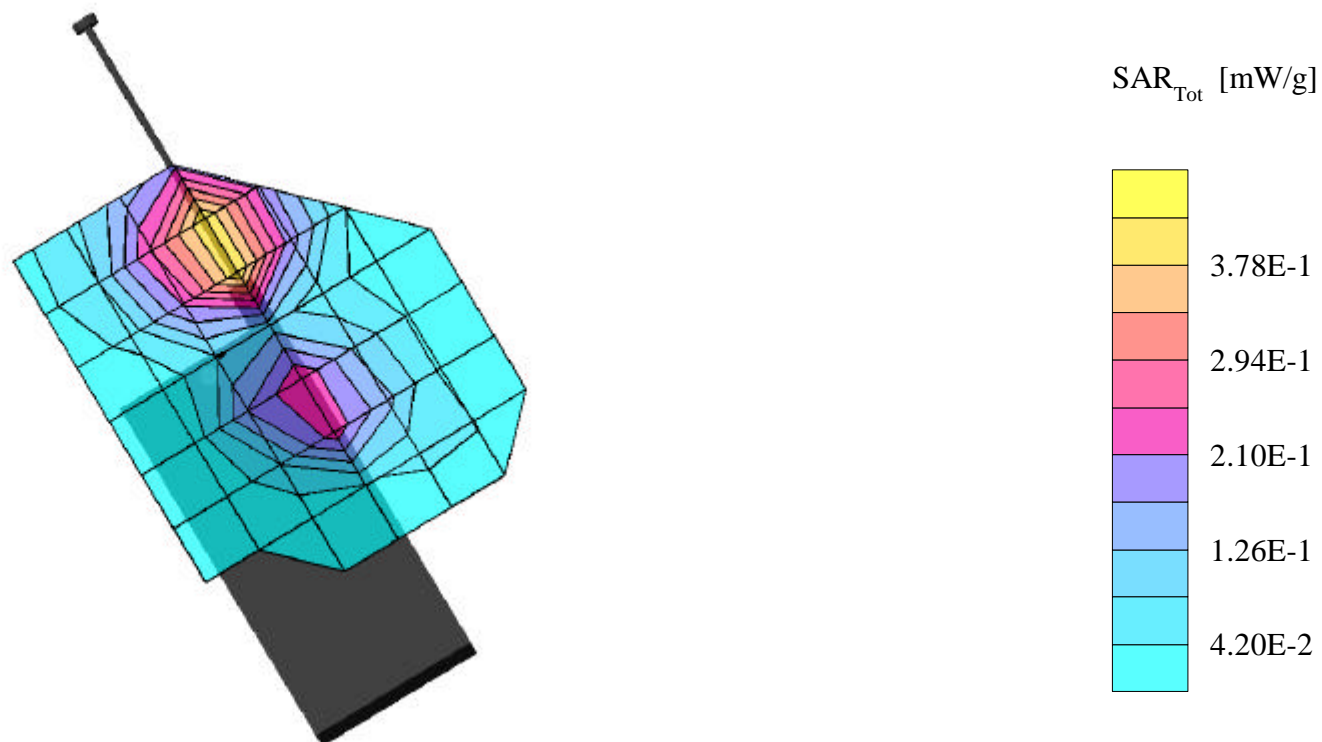
**SAR (1g): 0.485 mW/g, SAR (10g): 0.297 mW/g**

SANYO Dual Mode Model: SCP-4900

PCS CDMA Mode, Ch.0600 [1880.00MHz]; Extended Battery; Measured tissue temp. = 21.2°

Conducted Power = 23.5dBm; Right Head SAR, Cheek/Touch position

Test Date -- 03/23/2002 [FCC/OET Bulletin 65 - Supplement C, July 2001]



# SANYO FCC ID: AEZSCP-49H -- PCS CDMA Head SAR

SAM Phantom; Right Hand Section; Probe:ET3DV6 - SN1560 -- Probe Cal Date 20/02/02; ConvF(5.16,5.16,5.16)  
Med. Parameters 1900 MHz Brain:  $\sigma = 1.44$  mho/m  $\epsilon_r = 40.3$   $\rho = 1.00$  g/cm<sup>3</sup>; Antenna Position -- In; Crest Factor 1.0

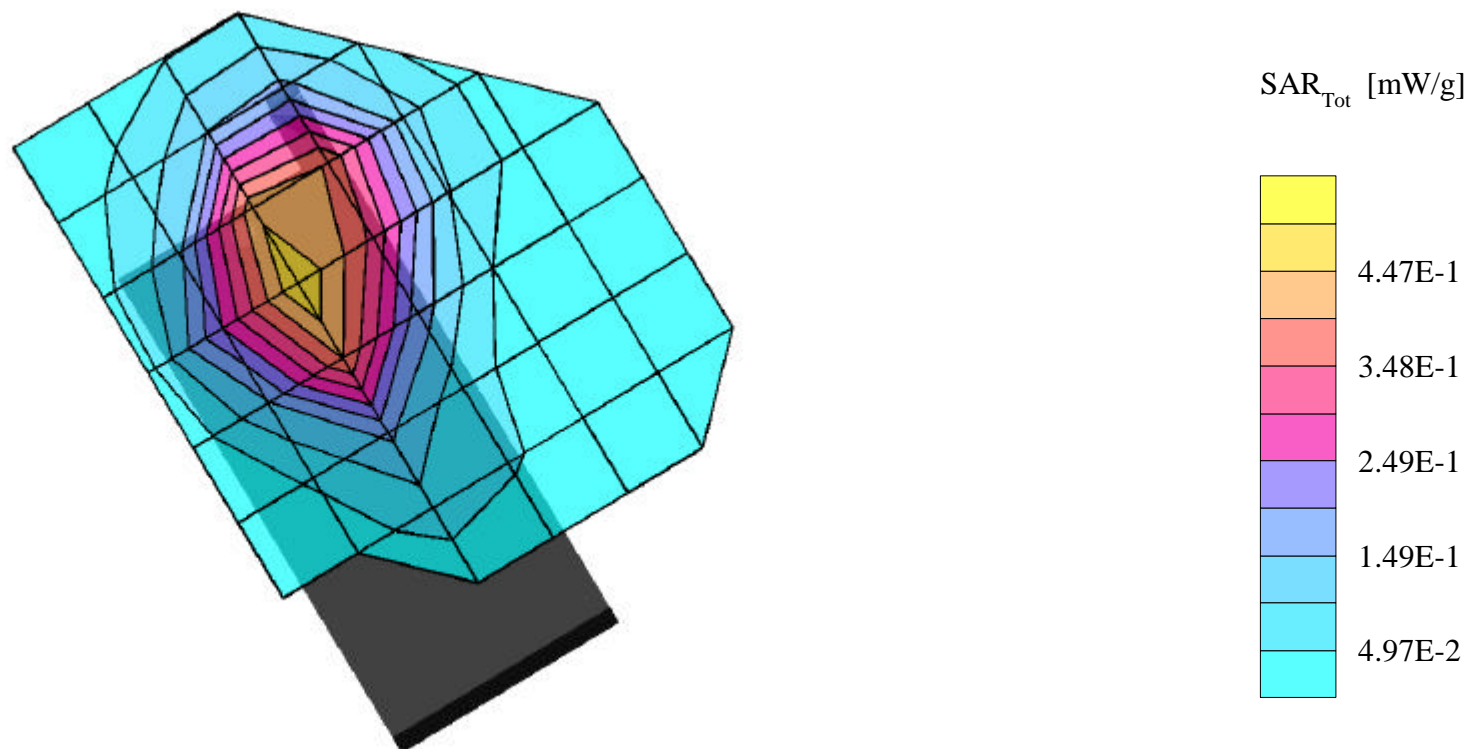
**SAR (1g): 0.503 mW/g, SAR (10g): 0.331 mW/g**

SANYO Dual Mode Model: SCP-4900

PCS CDMA Mode, Ch.1175 [1908.75MHz]; Extended Battery; Measured tissue temp. = 21.2°

Conducted Power = 23.5dBm; Right Head SAR, Cheek/Touch position

Test Date -- 03/23/2002 [FCC/OET Bulletin 65 - Supplement C, July 2001]



# SANYO FCC ID: AEZSCP-49H -- PCS CDMA Head SAR

SAM Phantom; Right Hand Section; Probe:ET3DV6 - SN1560 -- Probe Cal Date 20/02/02; ConvF(5.16,5.16,5.16)  
Med. Parameters 1900 MHz Brain:  $\sigma = 1.44$  mho/m  $\epsilon_r = 40.3$   $\rho = 1.00$  g/cm<sup>3</sup>; Antenna Position -- Out; Crest Factor 1.0

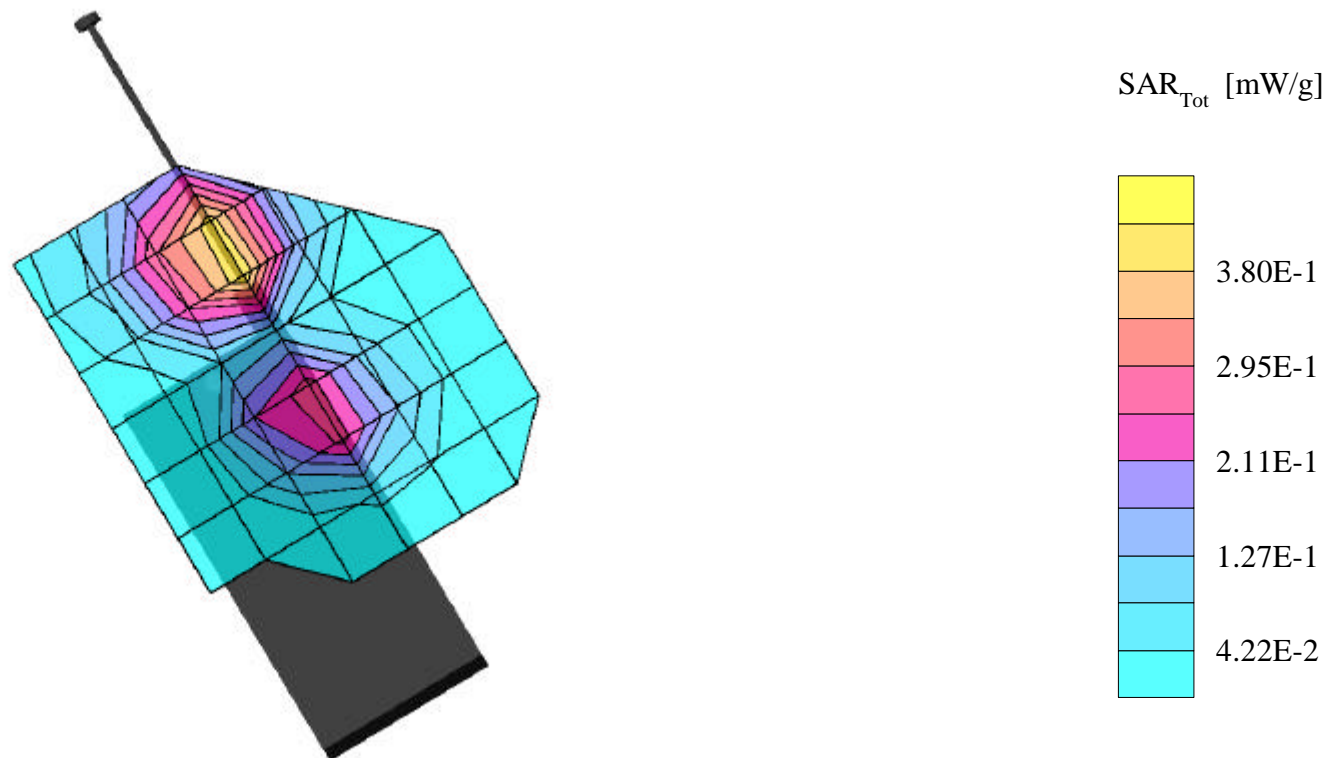
**SAR (1g): 0.492 mW/g, SAR (10g): 0.296 mW/g**

SANYO Dual Mode Model: SCP-4900

PCS CDMA Mode, Ch.1175 [1908.75MHz]; Extended Battery; Measured tissue temp. = 21.2°

Conducted Power = 23.5dBm; Right Head SAR, Cheek/Touch position

Test Date -- 03/23/2002 [FCC/OET Bulletin 65 - Supplement C, July 2001]

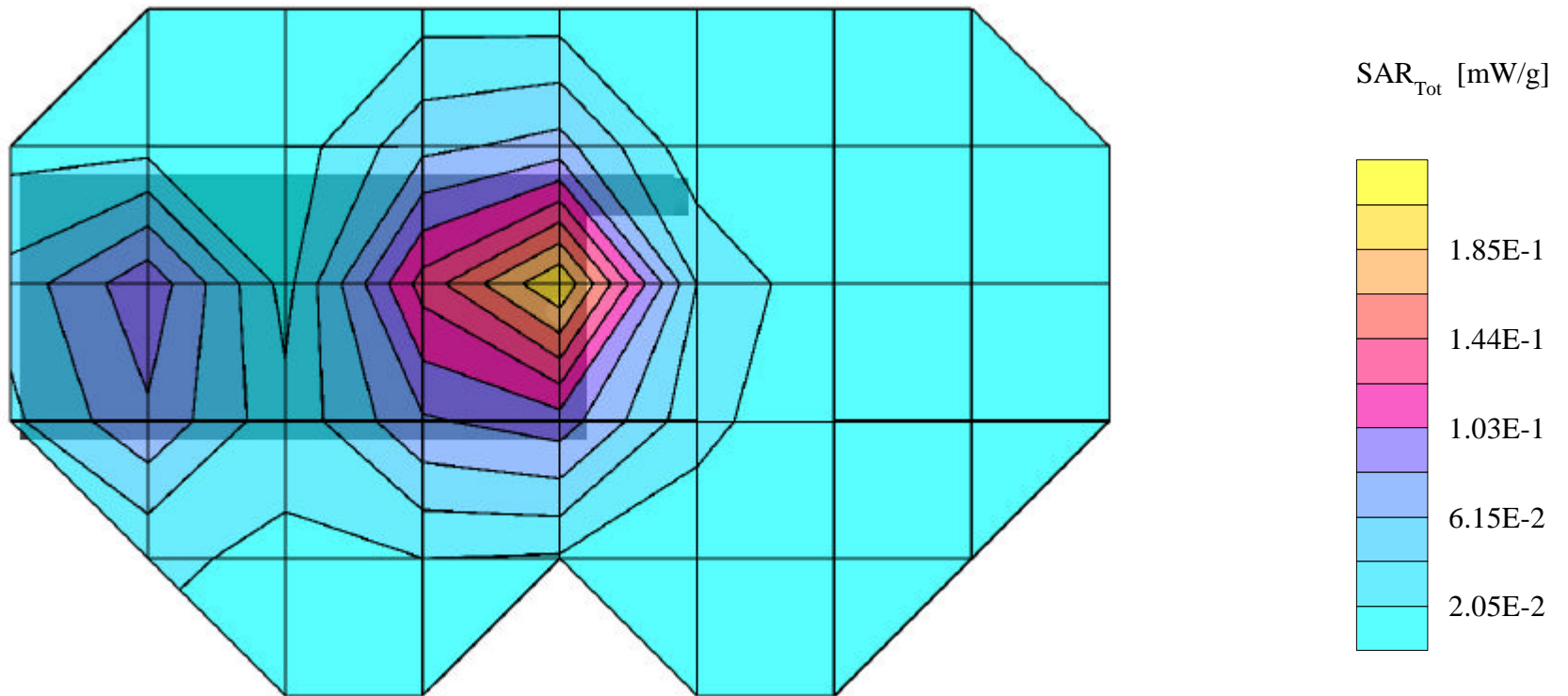


# SANYO FCC ID: AEZSCP-49H -- PCS CDMA Body SAR

SAM Phantom; Flat Section; Probe:ET3DV6 - SN1560 -- Probe Cal Date 20/02/02; ConvF(4.70,4.70,4.70)  
Med. Parameters 1900 MHz Muscle:  $\sigma = 1.56$  mho/m  $\epsilon_r = 54.0$   $\rho = 1.00$  g/cm<sup>3</sup>; Antenna Position -- In; Crest Factor 1.0  
**SAR (1g): 0.208 mW/g, SAR (10g): 0.128 mW/g**

SANYO Dual Mode Model: SCP-4900

PCS CDMA Mode, Ch.0025 [1851.25MHz]; Standard Battery; Measured tissue temp. = 21.3°  
Conducted Power = 23.5dBm; Flat Phantom; Spacing = 1.8cm from flat phantom to back of EUT, No BeltClip/No Holster  
Test Date -- 03/20/2002 [FCC/OET Bulletin 65 - Supplement C, July 2001]

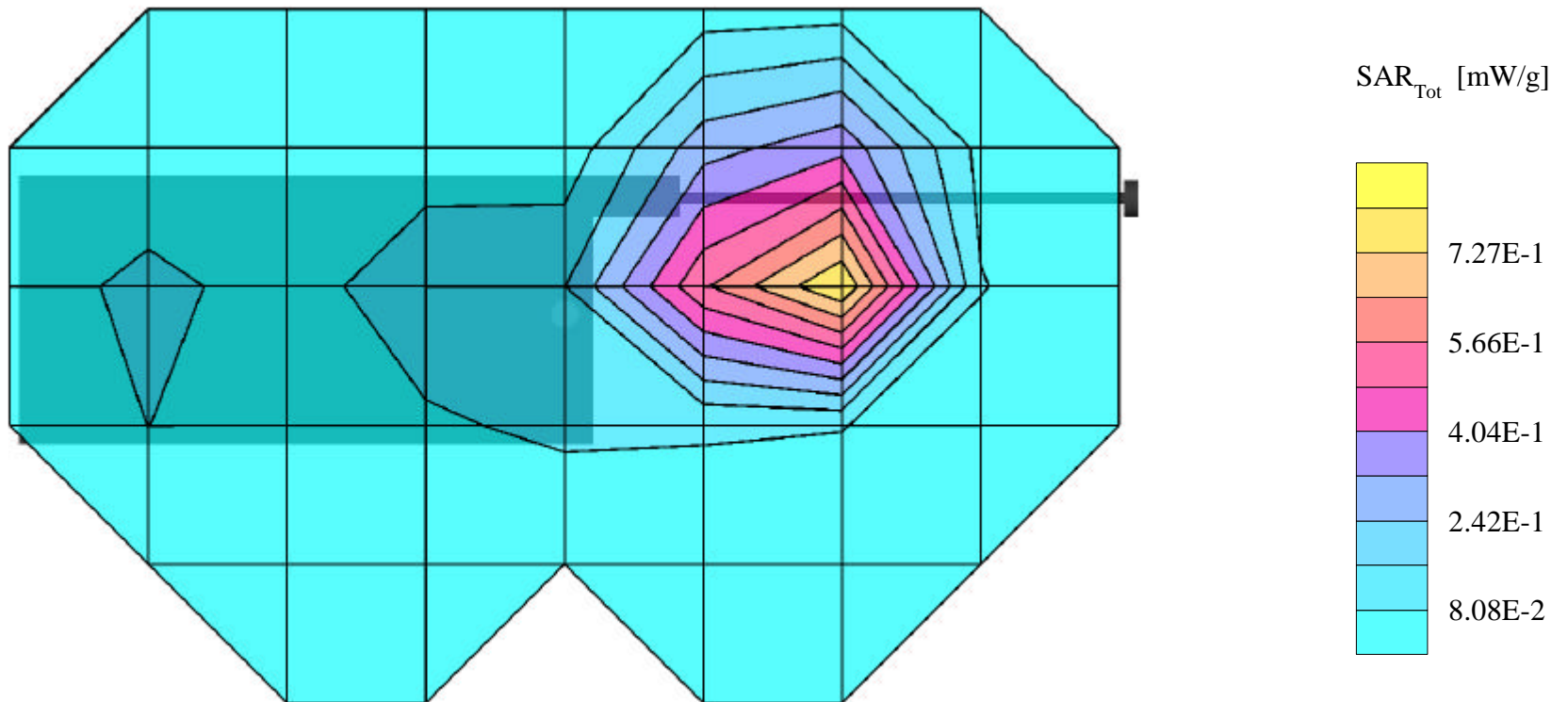


# SANYO FCC ID: AEZSCP-49H -- PCS CDMA Body SAR

SAM Phantom; Flat Section; Probe:ET3DV6 - SN1560 -- Probe Cal Date 20/02/02; ConvF(4.70,4.70,4.70)  
Med. Parameters 1900 MHz Muscle:  $\sigma = 1.56$  mho/m  $\epsilon_r = 54.0$   $\rho = 1.00$  g/cm ; Antenna Position -- Out; Crest Factor 1.0  
**SAR (1g): 1.15 mW/g, SAR (10g): 0.667 mW/g**

SANYO Dual Mode Model: SCP-4900

PCS CDMA Mode, Ch.0025 [1851.25MHz]; Standard Battery; Measured tissue temp. = 21.3°  
Conducted Power = 23.5dBm; Flat Phantom; Spacing = 1.8cm from flat phantom to back of EUT, No BeltClip/No Holster  
Test Date -- 03/20/2002 [FCC/OET Bulletin 65 - Supplement C, July 2001]



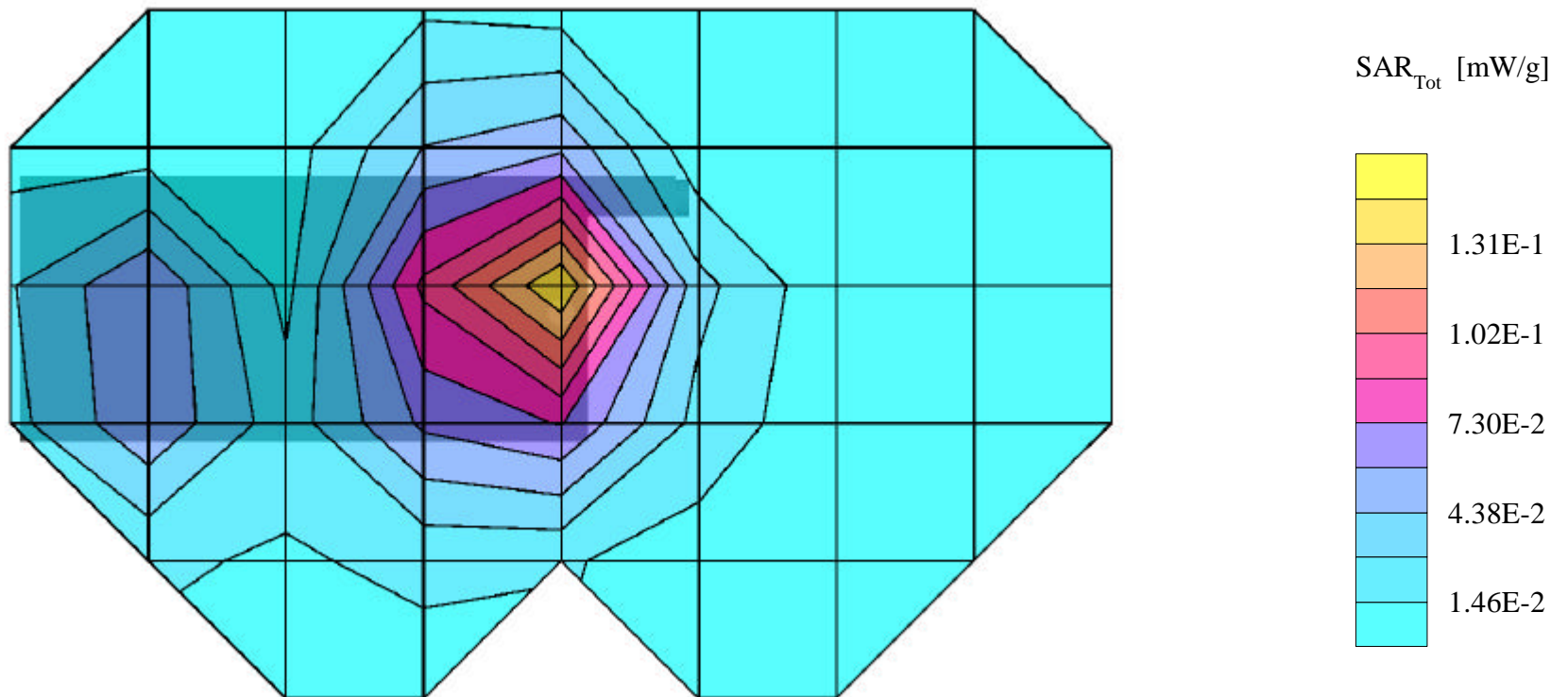


# SANYO FCC ID: AEZSCP-49H -- PCS CDMA Body SAR

SAM Phantom; Flat Section; Probe:ET3DV6 - SN1560 -- Probe Cal Date 20/02/02; ConvF(4.70,4.70,4.70)  
Med. Parameters 1900 MHz Muscle:  $\sigma = 1.56$  mho/m  $\epsilon_r = 54.0$   $\rho = 1.00$  g/cm ; Antenna Position -- In; Crest Factor 1.0  
**SAR (1g): 0.150 mW/g**, SAR (10g): 0.0898 mW/g

SANYO Dual Mode Model: SCP-4900

PCS CDMA Mode, Ch.0600 [1880.00MHz]; Standard Battery; Measured tissue temp. = 21.3°  
Conducted Power = 23.5dBm; Flat Phantom; Spacing = 1.8cm from flat phantom to back of EUT, No BeltClip/No Holster  
Test Date -- 03/20/2002 [FCC/OET Bulletin 65 - Supplement C, July 2001]



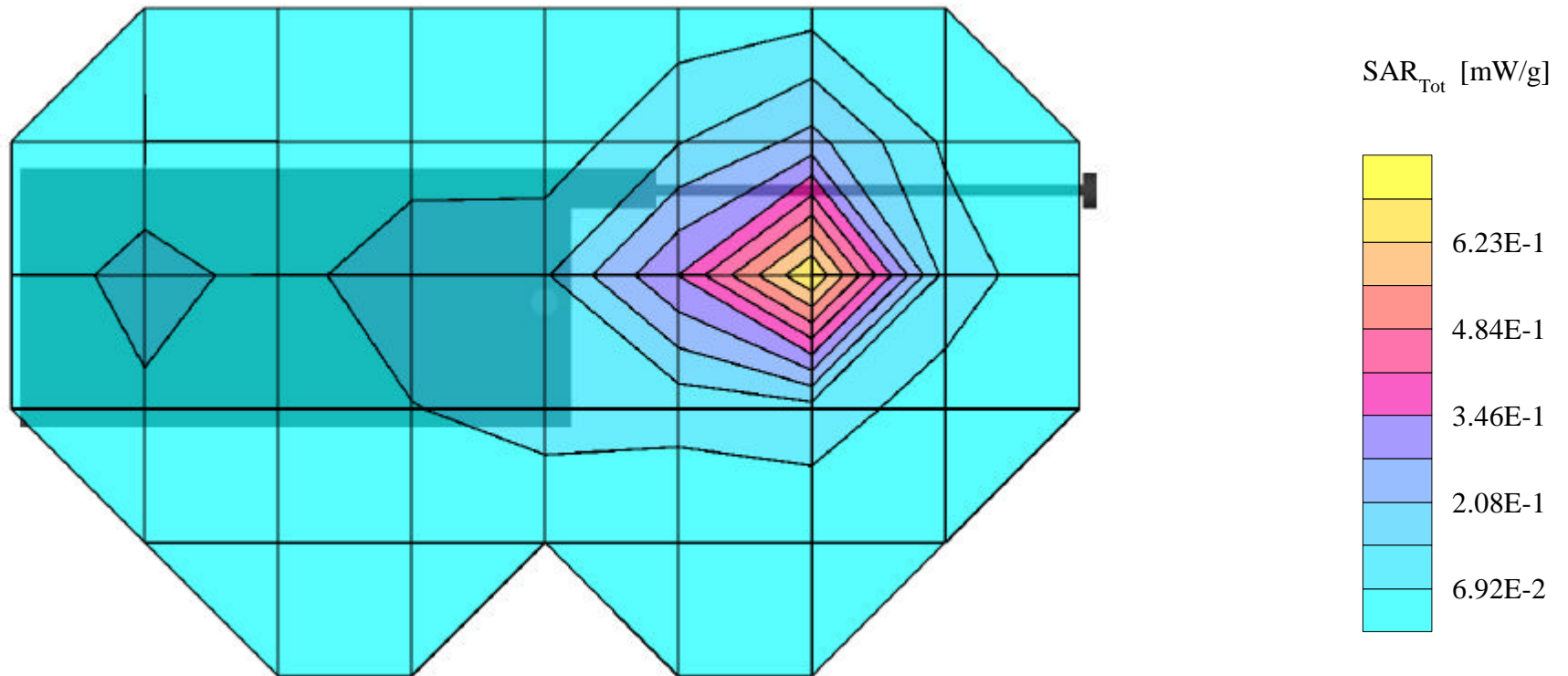


# SANYO FCC ID: AEZSCP-49H -- PCS CDMA Body SAR

SAM Phantom; Flat Section; Probe:ET3DV6 - SN1560 -- Probe Cal Date 20/02/02; ConvF(4.70,4.70,4.70)  
Med. Parameters 1900 MHz Muscle:  $\sigma = 1.56$  mho/m  $\epsilon_r = 54.0$   $\rho = 1.00$  g/cm ; Antenna Position -- Out; Crest Factor 1.0  
**SAR (1g): 0.782 mW/g, SAR (10g): 0.455 mW/g**

SANYO Dual Mode Model: SCP-4900

PCS CDMA Mode, Ch.0600 [1880.00MHz]; Standard Battery; Measured tissue temp. = 21.3°  
Conducted Power = 23.5dBm; Flat Phantom; Spacing = 1.8cm from flat phantom to back of EUT, No BeltClip/No Holster  
Test Date -- 03/20/2002 [FCC/OET Bulletin 65 - Supplement C, July 2001]

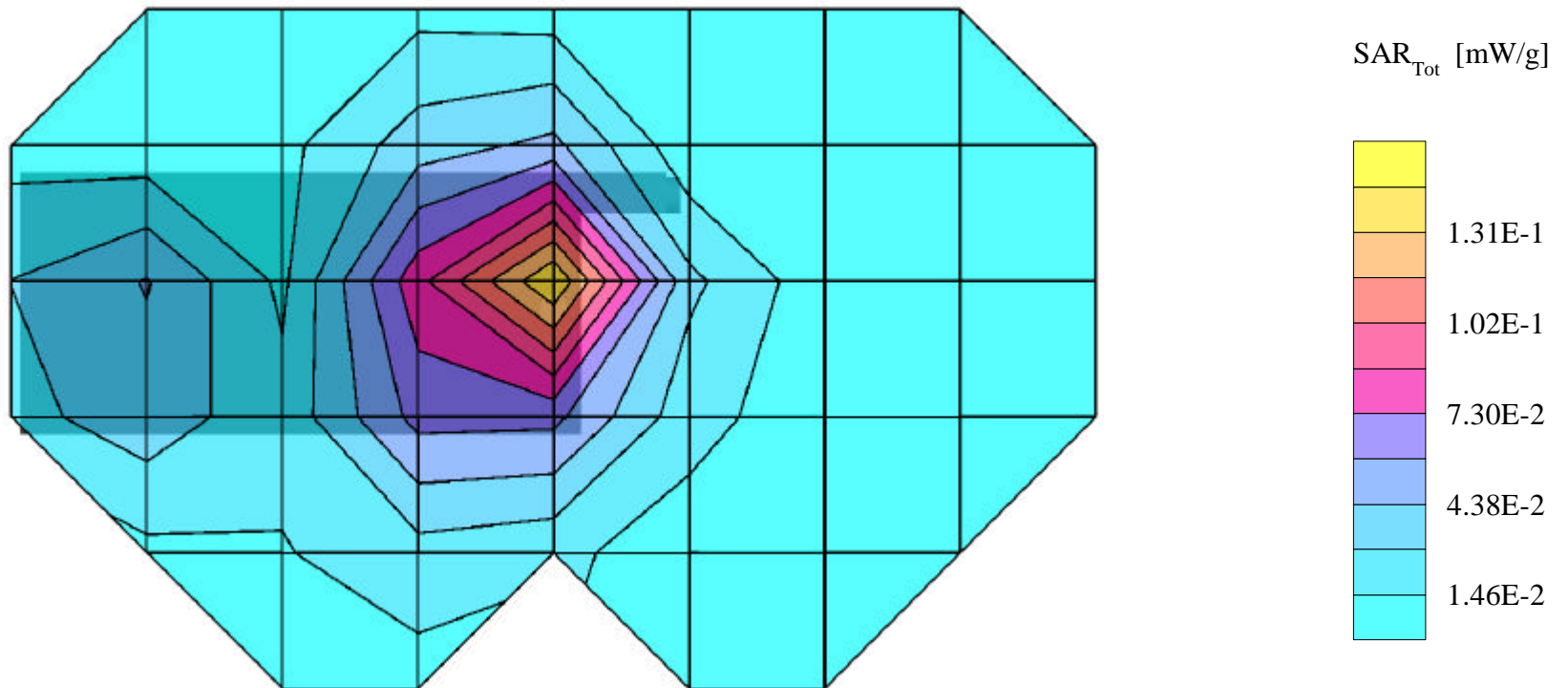


# SANYO FCC ID: AEZSCP-49H -- PCS CDMA Body SAR

SAM Phantom; Flat Section; Probe:ET3DV6 - SN1560 -- Probe Cal Date 20/02/02; ConvF(4.70,4.70,4.70)  
Med. Parameters 1900 MHz Muscle:  $\sigma = 1.56$  mho/m  $\epsilon_r = 54.0$   $\rho = 1.00$  g/cm ; Antenna Position -- In; Crest Factor 1.0  
**SAR (1g): 0.160 mW/g**, SAR (10g): 0.0902 mW/g

SANYO Dual Mode Model: SCP-4900

PCS CDMA Mode, Ch.1175 [1908.75MHz]; Standard Battery; Measured tissue temp. = 21.3°  
Conducted Power = 23.5dBm; Flat Phantom; Spacing = 1.8cm from flat phantom to back of EUT, No BeltClip/No Holster  
Test Date -- 03/20/2002 [FCC/OET Bulletin 65 - Supplement C, July 2001]

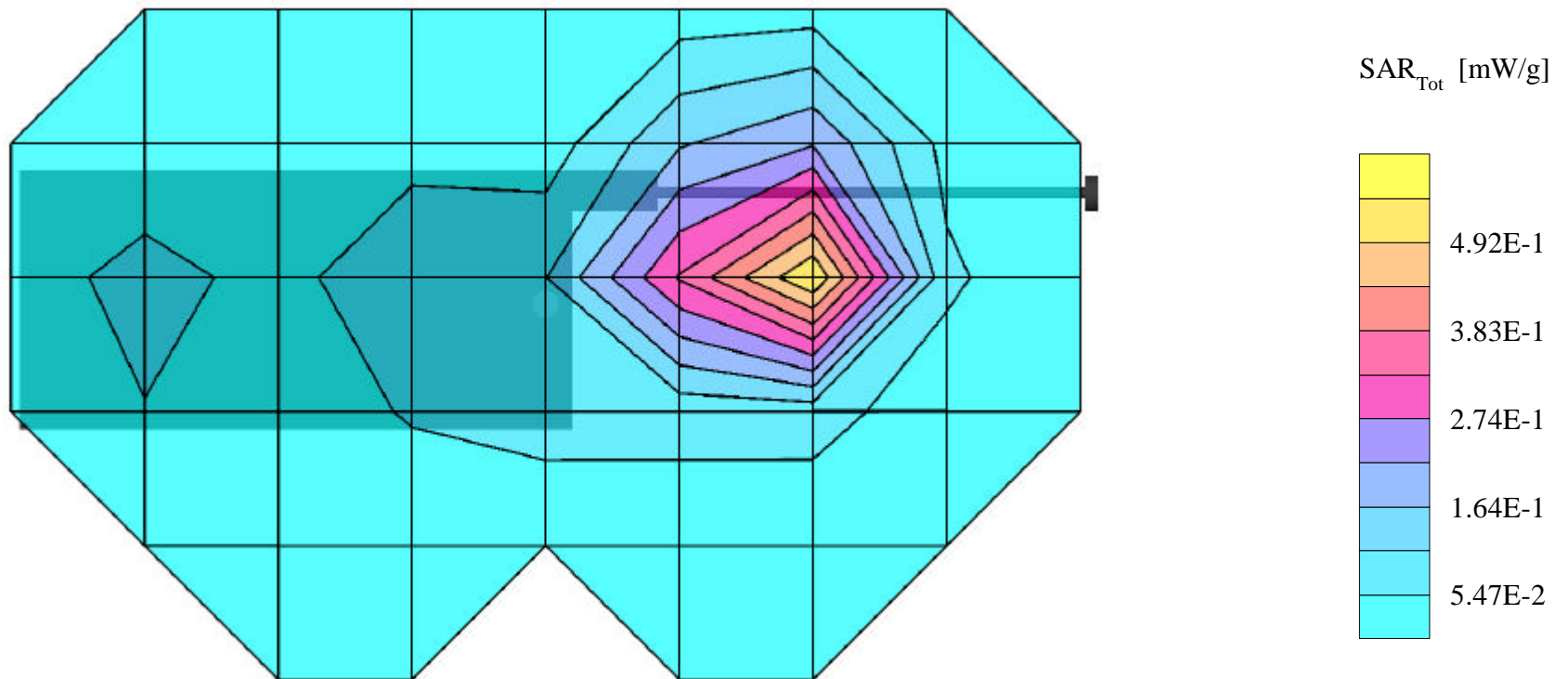


# SANYO FCC ID: AEZSCP-49H -- PCS CDMA Body SAR

SAM Phantom; Flat Section; Probe:ET3DV6 - SN1560 -- Probe Cal Date 20/02/02; ConvF(4.70,4.70,4.70)  
Med. Parameters 1900 MHz Muscle:  $\sigma = 1.56$  mho/m  $\epsilon_r = 54.0$   $\rho = 1.00$  g/cm ; Antenna Position -- Out; Crest Factor 1.0  
**SAR (1g): 0.703 mW/g**, SAR (10g): 0.402 mW/g

SANYO Dual Mode Model: SCP-4900

PCS CDMA Mode, Ch.1175 [1908.75MHz]; Standard Battery; Measured tissue temp. = 21.3°  
Conducted Power = 23.5dBm; Flat Phantom; Spacing = 1.8cm from flat phantom to back of EUT, No BeltClip/No Holster  
Test Date -- 03/20/2002 [FCC/OET Bulletin 65 - Supplement C, July 2001]

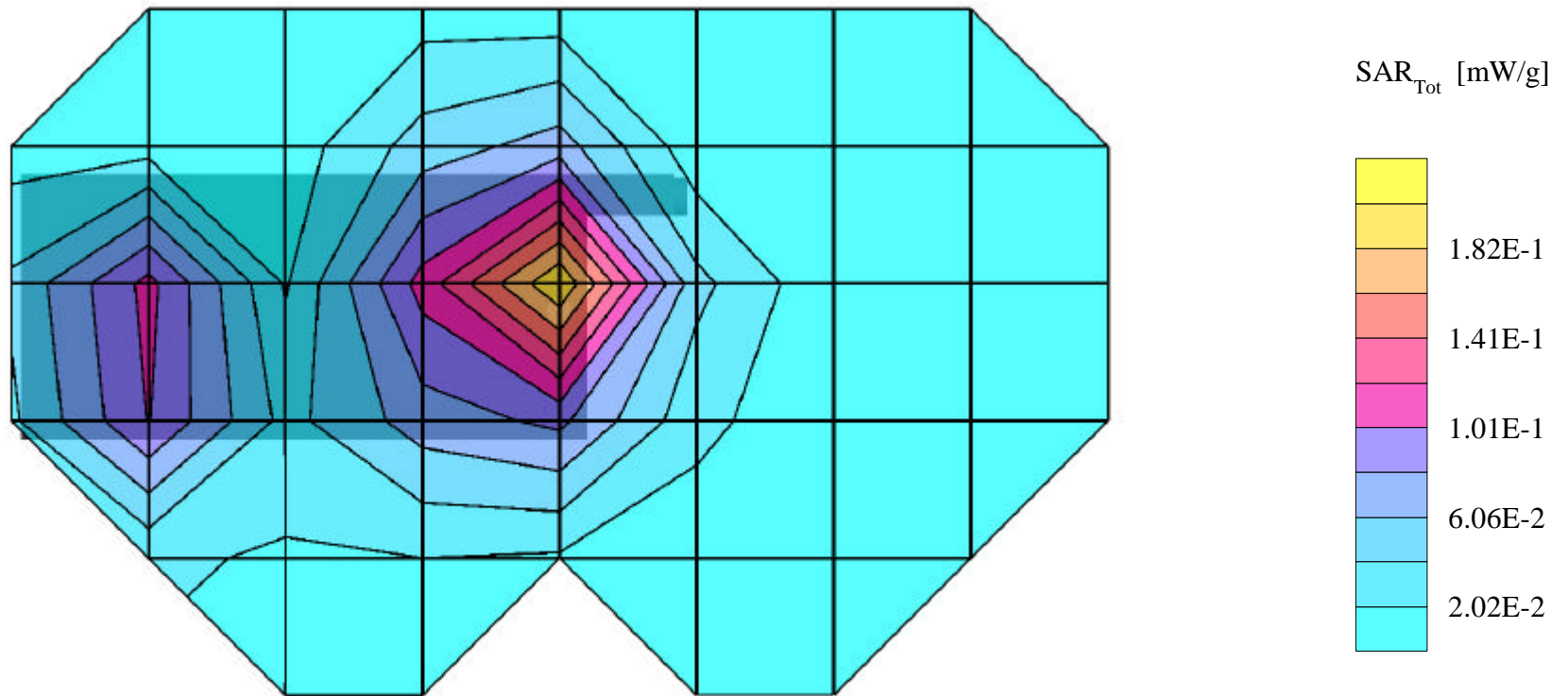


# SANYO FCC ID: AEZSCP-49H -- PCS CDMA Body SAR

SAM Phantom; Flat Section; Probe:ET3DV6 - SN1560 -- Probe Cal Date 20/02/02; ConvF(4.70,4.70,4.70)  
Med. Parameters 1900 MHz Muscle:  $\sigma = 1.56$  mho/m  $\epsilon_r = 54.0$   $\rho = 1.00$  g/cm<sup>3</sup>; Antenna Position -- In; Crest Factor 1.0  
**SAR (1g): 0.207 mW/g, SAR (10g): 0.124 mW/g**

SANYO Dual Mode Model: SCP-4900

PCS CDMA Mode, Ch.0025 [1851.25MHz]; Extended Battery; Measured tissue temp. = 21.3°  
Conducted Power = 23.5dBm; Flat Phantom; Spacing = 1.8cm from flat phantom to back of EUT, No BeltClip/No Holster  
Test Date -- 03/20/2002 [FCC/OET Bulletin 65 - Supplement C, July 2001]



# SANYO FCC ID: AEZSCP-49H -- PCS CDMA Body SAR

SAM Phantom; Flat Section; Probe:ET3DV6 - SN1560 -- Probe Cal Date 20/02/02; ConvF(4.70,4.70,4.70)  
Med. Parameters 1900 MHz Muscle:  $\sigma = 1.56$  mho/m  $\epsilon_r = 54.0$   $\rho = 1.00$  g/cm<sup>3</sup>; Antenna Position -- Out; Crest Factor 1.0  
**SAR (1g): 1.15 mW/g**, SAR (10g): 0.670 mW/g

SANYO Dual Mode Model: SCP-4900

PCS CDMA Mode, Ch.0025 [1851.25MHz]; Extended Battery; Measured tissue temp. = 21.3°  
Conducted Power = 23.5dBm; Flat Phantom; Spacing = 1.8cm from flat phantom to back of EUT, No BeltClip/No Holster  
Test Date -- 03/20/2002 [FCC/OET Bulletin 65 - Supplement C, July 2001]

